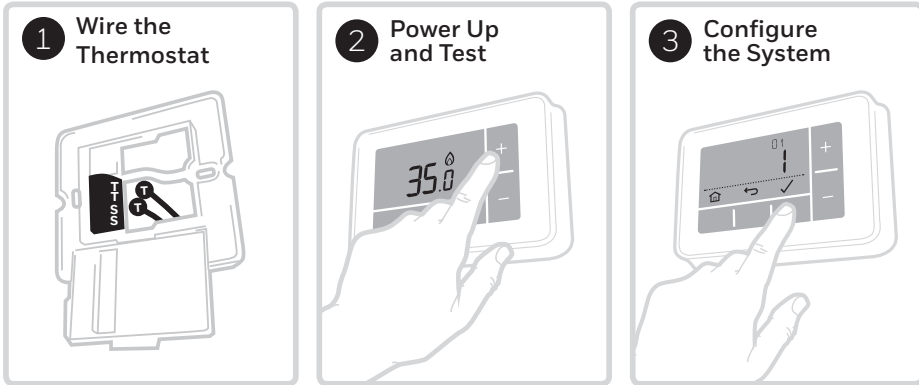


EN Quick Start Installation Guide

Compatible with OpenTherm appliances only.
Not compatible with 230V boilers, zone valve applications or 230V electric heating.



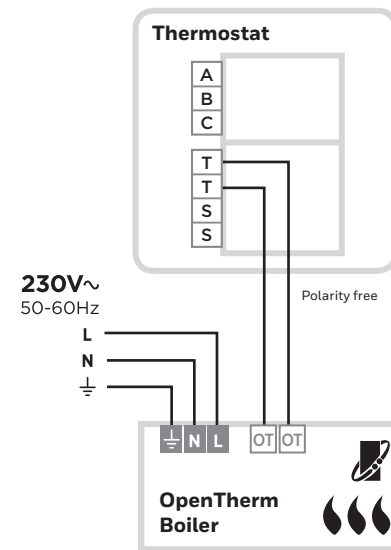
Installation in 3 steps...



Must be installed by a competent person.
 To ensure your safety make sure the mains power is switched OFF before accessing wiring.

32318058-001 B

OpenTherm Boiler

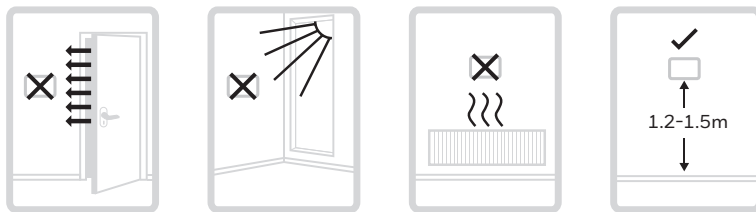


To prevent a short circuit from a loose wire -

- **When using multi-core cables:** Only remove enough outer insulation to allow secure fixing of the cores into the terminal block.
- **When using single core cables:** Secure them together with a cable tie as close as possible to the terminal block.

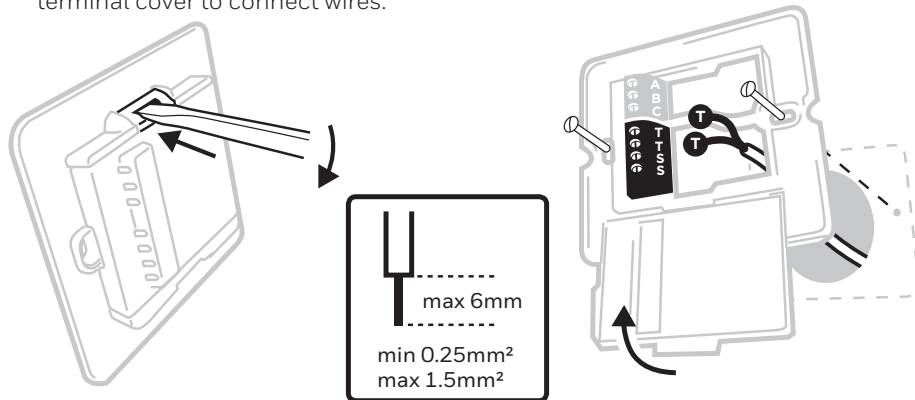
1 Wire the Thermostat

Find a suitable wall location away from draughts, direct sunlight or other heat sources, and where cables can be run from the boiler to the thermostat.



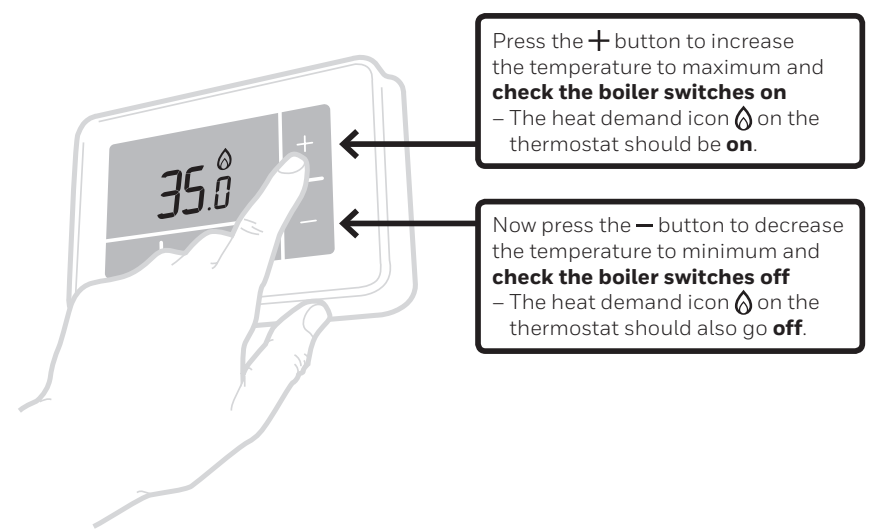
A) Separate the wallplate from the thermostat, and using a screwdriver open the wallplate terminal cover to connect wires.

B) Connect wires according to wiring diagrams and clip the cover closed.



2 Power Up and Test

Power Up the Heating System and do a quick functional test on the thermostat to check that it switches the boiler.



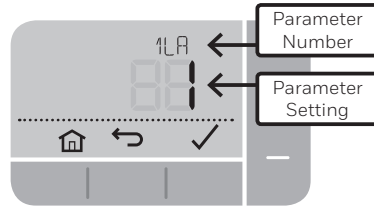
Press the **+** button to increase the temperature to maximum and **check the boiler switches on** - The heat demand icon on the thermostat should be **on**.

Now press the **-** button to decrease the temperature to minimum and **check the boiler switches off** - The heat demand icon on the thermostat should also go **off**.

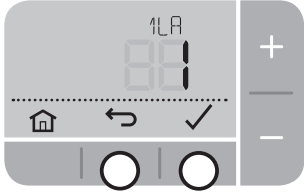
3 Configure the System

Specific settings for the thermostat and heating system can be configured in the advanced menu.

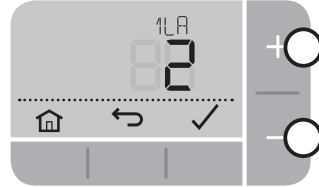
Press and hold and then buttons together until the display changes (approx. **3 seconds**).



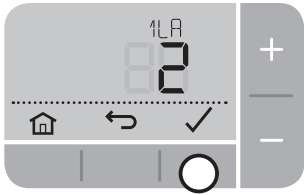
A) Press and buttons to navigate through the parameter list



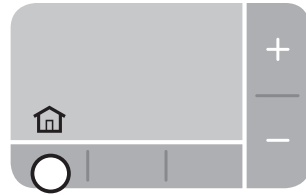
B) Press and buttons to change a parameter



C) Press button to save the change (or press to cancel the change)



D) Press button to exit advanced menu and save any changes



OpenTherm Data ID's

N°	Description	Settings (default in bold)
OT1	Low load control	0 = Off, 1 = On
OT2	Control setpoint	5 - 99°C
OT3	Supply water temperature	5 - 99°C
OT4	Return water temperature	5 - 99°C
OT5	Max. supply water temperature	5 - 99°C
OT6	Hot water temperature	5 - 99°C
OT7	Hot water setpoint	5 - 99°C
OT8	Actual power	0 - 99%
OT9	Water pressure	0.0 - 9.9
OT10	OTC control	0 = Off , 1 = On
OT11	OTC curve	4 - 40 (16)
OT12	Room compensation	0 = Off , 1 = On

Parameters

N°	Description	Settings (default in bold)
1 LR	Language	1 = EN , 2 = NL, 3 = DE, 4 = FR, 5 = ES
4 LL	Lower Temperature Limit	5 - 21 (°C)
5 UL	Upper Temperature Limit	21 - 35 (°C)
6 SO	Schedule options	1 = 7 day (different schedule each day of the week) 2 = 5 + 2 day (weekday + weekend schedule) 3 = 1 day (same schedule every day)
7 NP	Number of periods per day	4 or 6
8 SS	Wired Remote Sensor	0 = No Remote Sensor , 1 = Wired Remote Sensor
9 LC	Fail Safe mode	0 = Boiler off , 1 = Boiler 20% on / 80% off
10 BL	Backlight	0 = Off, 1 = On (only on demand)
11 CL	Clock Format	0 = 24 hr , 1 = AM/PM
12 DS	Daylight Saving time change	0 = Off, 1 = Auto
13 TO	Temperature Display Offset	+/-1.5°C
15 SD	Restore Schedule Defaults	0 , 1 = reset
16 FS	Restore Factory Settings	0 , 1 = reset

Troubleshooting

What's happening?	What it could mean...	How to fix it...
Thermostat display is blank	No power to heating system Faulty wiring connection	Check heating system is powered Check wiring at thermostat and boiler terminals
Display = --	Faulty temperature sensor	Replace thermostat or check wiring to remote temperature sensor if fitted
Thermostat shows heat demand but boiler doesn't respond	Boiler (water) already at temperature Faulty wiring connection	Normal behaviour - wait for water temperature to drop Check wiring at thermostat and boiler terminals

Conforms to protection requirements of the following directives:
EMC: 2014/30/EU and **LVD: 2014/35/EU**

ErP: Class VI (+4%), (EU) 811/2013

WEEE Directive 2012/19/EC - Waste Electrical and Electronic Equipment directive
At the end of the product life dispose of the packaging and product in a corresponding recycling centre. Do not dispose of the unit with the usual domestic refuse. Do not burn the product.



Honeywell Control Systems Ltd.
Skimped Hill Lane,
Bracknell,
Berkshire
RG12 1EB

www.honeywelluk.com

Manufactured for and on behalf of the Environmental & Energy Solutions
Division of Honeywell Technologies Sàrl, ACS-E&ES, Z.A., La Pièce 16,
1180 Rolle, Switzerland by its Authorised Representative Honeywell Inc.

© 2016 Honeywell International Inc. | Printed in UK

Free Manuals Download Website

<http://myh66.com>

<http://usermanuals.us>

<http://www.somanuals.com>

<http://www.4manuals.cc>

<http://www.manual-lib.com>

<http://www.404manual.com>

<http://www.luxmanual.com>

<http://aubethermostatmanual.com>

Golf course search by state

<http://golfingnear.com>

Email search by domain

<http://emailbydomain.com>

Auto manuals search

<http://auto.somanuals.com>

TV manuals search

<http://tv.somanuals.com>