

KENWOOD

KDC-HD548U

CD-RECEIVER

INSTRUCTION MANUAL

AMPLI-TUNER LECTEUR DE CD

MODE D'EMPLOI

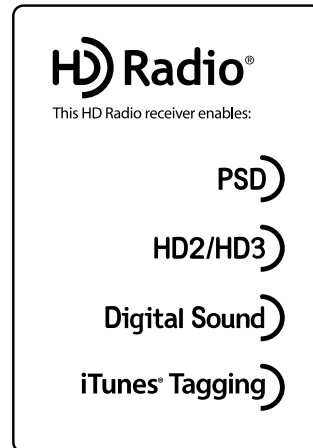
REPRODUCTOR DE DISCOS COMPACTOS RECEPTOR DE FM/AM

MANUAL DE INSTRUCCIONES

Kenwood Corporation



AAC



Take the time to read through this instruction manual.

Familiarity with installation and operation procedures will help you obtain the best performance from your new CD-receiver.

For your records

Record the serial number, found on the back of the unit, in the spaces designated on the warranty card, and in the space provided below. Refer to the model and serial numbers whenever you call upon your Kenwood dealer for information or service on the product.

Model KDC-HD548U Serial number _____

US Residents Only

Register Online

Register your Kenwood product at www.Kenwoodusa.com

CONTENTS


| | |
|---|-----------|
| Safety | 2 |
| Preparation | 3 |
| How to attach/detach the faceplate | |
| How to reset your unit | |
| How to prepare the remote controller (RC-405) | |
| Basic operations | 4 |
| Getting started | 6 |
| Canceling the display demonstration | |
| Setting the demonstration mode | |
| Adjusting the clock | |
| Initial settings before operations | |
| Listening to HD Radio™ Broadcasts | 7 |
| Direct Access Tuning using the remote controller (RC-405) | |
| iTunes Tagging | |
| Adjust [SETTINGS] mode settings | |
| Listening to a disc/ USB device/ iPod | 9 |
| Start playing a disc | |
| Connecting a USB device | |
| Connecting an iPod | |
| Selecting Repeat Play | |
| Selecting Random Play | |
| Selecting Scan Play | |
| Selecting a folder/track/file | |
| Direct Music Search using the remote controller (RC-405) | |
| Alphabet Search and My Playlist for iPod | |
| iPod control by Hand Mode | |
| Adjust [SETTINGS] mode settings | |
| Listening to the other external components | 12 |
| Function settings | 12 |
| Troubleshooting | 14 |
| Specifications | 17 |

Safety

WARNING

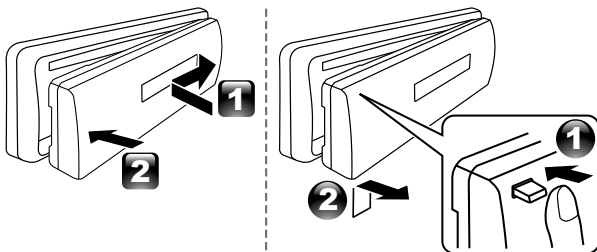
Stop the car before operating the unit.

Important to know...

- To prevent a short circuit, never put or leave any metallic objects (such as coins or metal tools) inside the unit.
- **Caution:** Adjust the volume so that you can hear sounds outside the car. Driving with the volume too high may cause an accident.
- **Condensation:** When the car is air-conditioned, moisture may collect on the laser lens. This may cause disc read errors. In this case, remove the disc and wait for the moisture to evaporate.
- This unit can only play the CDs with:

- The illustrations in this manual are examples used to explain more clearly how the controls are used. Therefore, what appears on the illustrations may differ from what appears on the actual equipment.
- A USB connection cable, CA-U1EX (optional accessory) is required for connecting a USB device.
- You can connect an Apple iPod/iPhone with this unit.
The word "iPod" appearing in this manual indicates the iPod or iPhone connected to this unit with a connection cable, KCA-iP102 (optional accessory).
- If you experience problems during installation, consult your Kenwood dealer.
- When you purchase external components, check with your Kenwood dealer to make sure that they work with your model and in your area.
- Detailed information and notes about the playable audio files are stated in an online manual on the following site:
www.kenwood.com/cs/ce/audiofile/

Preparation

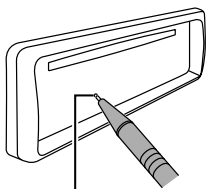
How to attach/detach the faceplate



- Do not expose the faceplate to direct sunlight, excessive heat, or humidity. Also avoid places with too much dust or the possibility of water splashing.
- Keep the faceplate in its casing while detached.
- The faceplate is a precision piece of equipment and can be damaged by shocks or jolts.
- To prevent deterioration, do not touch the terminals of the unit and faceplate with your fingers.

How to reset your unit

If this unit fails to operate properly, press the reset button.

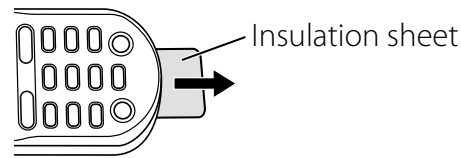


Reset button

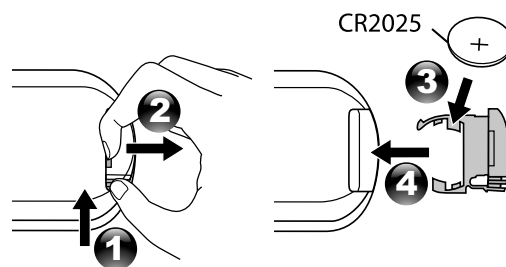
The unit returns to factory settings when the reset button is pressed.

How to prepare the remote controller (RC-405)

When you use the remote controller for the first time, pull out the insulation sheet.



If the effectiveness of the remote controller decreases, replace the battery.



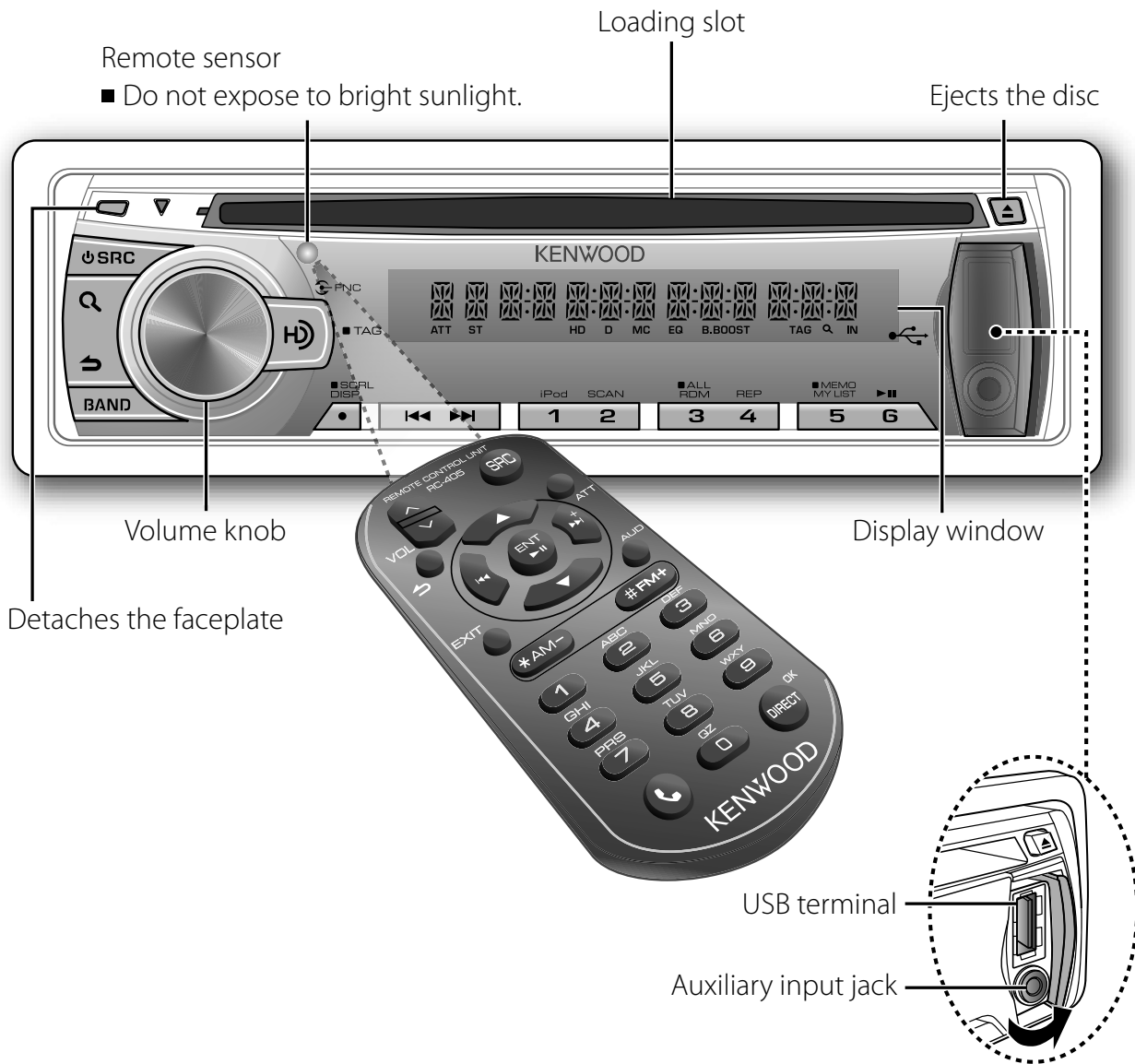
CALIFORNIA, USA ONLY

This perchlorate WARNING applies only to the product sold or distributed in California USA "Perchlorate Material—special handling may apply, See www.dtsc.ca.gov/hazardouswaste/perchlorate."

Caution:

- Do not set the remote control in hot places such as on the dashboard.
- Lithium battery.
Danger of explosion if the battery is incorrectly replaced. Replace only with the same or equivalent type.
- The battery pack or batteries shall not be exposed to excessive heat such as sunshine, fire or the like.
- Keep battery out of reach of children and in original package until ready to use. Dispose of used batteries promptly. If swallowed contact physician immediately.

Basic operations



The following indicator lights up when...

ATT (blink) : The sound attenuates. (Applicable only when using the remote controller, RC-405).

ST : A stereo broadcast is received.

HD : HD Radio™ broadcast is tuned in.

D : HD Radio digital broadcast is tuned in.

MC : HD Radio multicast broadcast is tuned in.

EQ : **[SYSTEM Q]** is set to an EQ mode other than **[NATURAL]**. (page 12)

B.BOOST : **[BASS BOOST]** is set to **[B.BOOST LV1]** or **[B.BOOST LV2]**. (page 12)

TAG : The song information can be registered.

Q : In Search Mode or when a Playlist is displayed.

IN : A disc is in the unit.

When you press or hold the following button(s)...

| Main unit | Remote controller | General operation |
|---------------------|-------------------|--|
| SRC | — | <ul style="list-style-type: none"> ■ Turns on. ■ Turns off if pressed and held. |
| | SRC | <p>Selects the available sources (HD RADIO, USB or iPod, CD, AUX, STANDBY), if the power is turned on.</p> <ul style="list-style-type: none"> • <i>If the source is ready, playback also starts. "iPod" or "CD" is selectable only when an iPod is connected or a disc is loaded.</i> |
| Volume knob (turn) | VOL | Adjusts the volume level. |
| | ▲ / ▼ | Selects items. |
| Volume knob (press) | ENT | Confirms selection. |
| | — | Enters [FUNCTION] settings. |
| BAND | *AM- / #FM+ | <ul style="list-style-type: none"> ■ Selects the FM bands (FM1/ FM2/ FM3) or AM. ■ Selects the next/previous folder. (Pressing BAND on the main unit can only select the next folders.) |
| 6 () | ENT | Pauses/resumes playback of a disc/ USB device/ iPod. |
| / | / + | <ul style="list-style-type: none"> ■ Searches for radio station. ■ Selects track/file. ■ Fast-forwards/reverses tracks if pressed and held. |
| SCRL DISP | — | <ul style="list-style-type: none"> ■ Changes the display information. ■ Scrolls the display information if pressed and held. ■ Enters clock adjustment mode directly (page 6) if pressed and held while in clock display screen. |
| | — | <ul style="list-style-type: none"> ■ Selects "HD RADIO" source. ■ Enters HD Radio tagging mode if pressed and held. (page 8) |
| — | AUD | Enters [AUDIO CTRL] settings directly. |
| — | ATT | <p>Attenuates the sound.</p> <ul style="list-style-type: none"> • <i>To return to the previous level, press the button again.</i> |
| | | Returns to the previous item. |
| | EXIT | <p>Exit from setting mode.</p> <ul style="list-style-type: none"> • <i>Press and hold on the main unit will also exit from the setting mode.</i> |

Getting started

Canceling the display demonstration

The display demonstration is always turned on unless you cancel it.

When you turn on the power (or after you reset the unit), the display shows:

[CANCEL DEMO] → [PRESS] → [VOLUME KNOB]

- 1 Press the volume knob.
[YES] is selected as the initial setup.
- 2 Press the volume knob again to confirm.
[DEMO OFF] appears.
 - If no operation is done for about 15 seconds or if you turn the volume knob to select [NO] in step 2, [DEMO MODE] appears and the display demonstration starts.

Setting the demonstration mode

- 1 Press the volume knob to enter [FUNCTION].
- 2 Turn the volume knob to select [DEMO MODE], then press to enter.
- 3 Turn the volume knob to select [ON] or [OFF].
If [ON] is selected, display demonstration starts if no operation is done for about 20 seconds.
- 4 Hold ↵ to finish the procedure.

Adjusting the clock

- 1 Press the volume knob to enter [FUNCTION] mode.
- 2 Turn the volume knob to select [SETTINGS], then press to enter.
- 3 Turn the volume knob to select [CLOCK], then press to enter.
- 4 Turn the volume knob to select [CLOCK ADJUST], then press to enter.
Clock hour flashes on the display.
- 5 Turn the volume knob to adjust the hour, then press to enter minute adjustment.
Clock minutes flashes on the display.
- 6 Turn the volume knob to adjust the minute, then press to confirm.
Press ◀◀ / ▶▶ to move between the hour and minute adjustment.
- 7 Hold ↵ to finish the procedure.

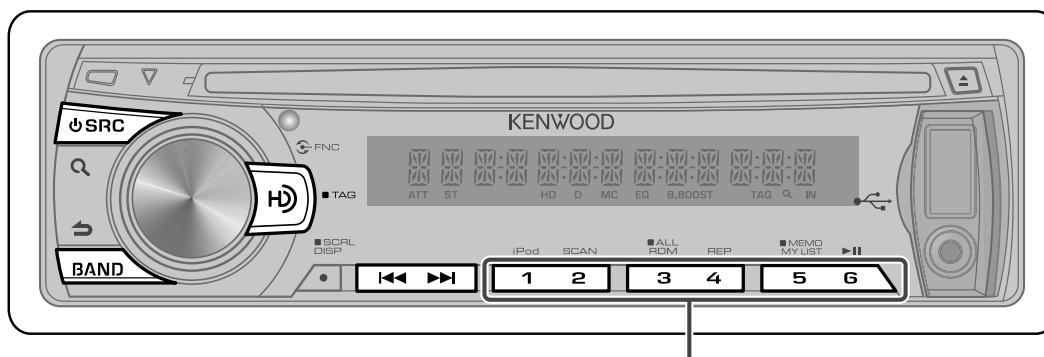
Initial settings before operations

- 1 Press ⏻ SRC to enter [STANDBY] mode.
- 2 Press the volume knob to enter [FUNCTION] mode.
- 3 Turn the volume knob to select [INITIAL SET], then press to enter.
- 4 Turn the volume knob to make a selection, then press to confirm.
See table below for selection.
- 5 Hold ↵ to finish the procedure.

| Item | Selectable setting (Preset: *) |
|--------------|--|
| PRESET TYPE | NORMAL*: Memorizes one station for each preset button in each band (FM1/ FM2/ FM3/ AM). ; MIX: Memorizes one station for each preset button regardless of the selected band (FM1/ FM2/ FM3/ AM). |
| KEY BEEP | ON*/ OFF: Activates/deactivates the keypress tone. |
| BUILT-IN AUX | ON1*: Outputs sound of the connected external component through the car speakers when "AUX" is selected as the source. ; ON2: Outputs sound from the connected external component when "AUX" is selected as the source. When you turn on the power, the sound attenuates (to prevent noise when no external component is connected). Turn the volume knob clockwise to return to the previous volume level. ; OFF: Disables "AUX" in source selection. |

| Item | Selectable setting (Preset: *) |
|--------------|--|
| CD READ | 1*: Automatically distinguishes between audio file disc and music CD. ; 2: Forces to play as a music CD. No sound can be heard if an audio file disc is played. |
| SP SELECT | OFF*/ 5/4/ 6 × 9/6/ OEM: Selects the speaker size for optimum performance. |
| F/W UP xx.xx | YES: Starts upgrading the firmware. ; NO*: Cancels (upgrading is not activated). For details on how to update the firmware, see: www.kenwood.com/cs/ce/ |

Listening to HD Radio™ Broadcasts



Hold for about 2 seconds to memorize the current station.
 ■ Press briefly to recall memorized station or channel.

- 1 Press **SRC** to select "HD RADIO."
Press **HD** to select "HD RADIO" source directly.
- 2 Press **BAND** repeatedly to select a band (FM1/ FM2/ FM3/ AM).
- 3 Press **◀◀/▶▶** to search for a station or channel.
"LINKING" appears while linking to a multicast channel.

Direct Access Tuning using the remote controller (RC-405)

- 1 Press **DIRECT** to enter Direct Access Tuning Mode.
"----" appears.
- 2 Press **DIRECT** repeatedly to select the tuning item.
Tuning item: Frequency "----", Channel "HD -", or Cancelling Direct Access Tuning
- 3 Press the number buttons to enter the frequency or channel.
You can enter the FM band frequency in steps of a minimum of 0.1 MHz.
- 4 Press **◀◀/▶▶** to tune in to the entered frequency or channel.

Using the remote controller (RC-405)

- FM+ / AM-** : Selects band.
◀◀/▶▶(+) : Selects station.
1 - 6 : Selects preset station.

Continued...

iTunes Tagging

When you hear a song you enjoy on your local HD Radio station, you can tag the song and save the song's information on this unit. Up to 50 TAGs (song's information) can be registered to this unit.

By using this tagging function, you can easily purchase the songs from Apple iTunes Store.

Hold **HD** to enter HD Radio tagging mode and tag the song.

"TAG" will be indicated on the display when the song information can be registered.

To transfer the tagged songs to your iPod and purchase the songs from iTunes Store

1 Connect an iPod to this unit. (page 9)

The tagged information registered to this unit is automatically transferred to the connected iPod.

2 Connect the iPod to your computer.

3 Synchronize the iPod to the iTunes.

The saved songs will be shown in a playlist called "Tagged." You can now purchase and download the songs easily from the iTunes Store.

Adjust [SETTINGS] mode settings

While listening to the radio...

1 Press the volume knob to enter [FUNCTION] mode.

2 Turn the volume knob to select [SETTINGS], then press to enter.

3 Turn the volume knob to make a selection, then press to confirm.

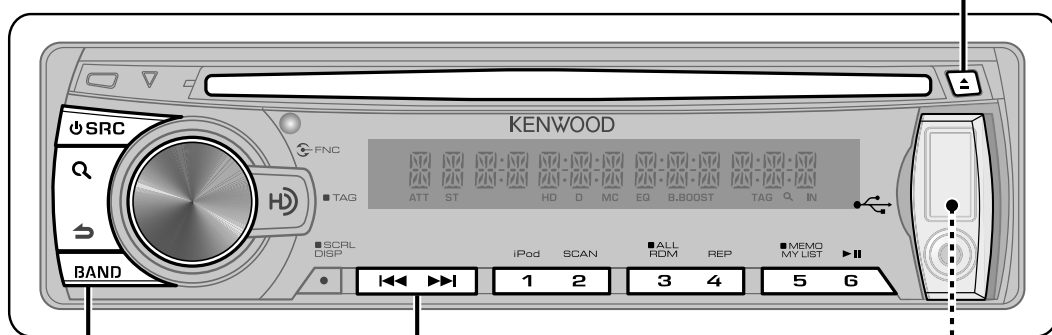
See table below for selection.

4 Hold **↶** to finish the procedure.

| Item | Selectable setting (Preset: *) |
|--------------|---|
| SEEK MODE | Selects the tuning mode for ◀◀ / ▶▶ buttons. AUTO1* : Automatically search for a station. ; AUTO2 : Search in the order of the stations in the preset memory. ; MANUAL : Manually search for a station. |
| AUTO MEMORY | YES : Automatically starts memorizing 6 stations with good reception. ; NO* : Cancels (automatic memorizing is not activated). (Selectable only if [NORMAL] is selected for [PRESET TYPE] .) (page 6) |
| RECEIVE MODE | Sets the receive mode of the HD Radio receiver. AUTO* : Automatically tunes to analog broadcast when there is no digital broadcast. ; DIGITAL : Tunes in to digital broadcast only. ; ANALOG : Tunes in to analog broadcast only. |
| TAG MEMORY | Displays the tag memory usage of the HD Radio receiver. 00 — 50 (Preset: 00) : Up to 50 tags can be registered to this unit. |

Listening to a disc/ USB device/ iPod

Ejects the disc.
("NO DISC" appears and "IN" indicator goes off.)



- Press to select track/file.
- Hold to fast-forwards/reverses.

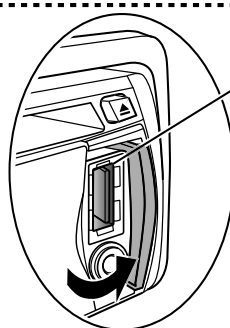
Press to select next folder.

Start playing a disc

- 1 Press **SRC** to turn on the power.
- 2 Insert a disc into the loading slot.
Playback starts automatically.
- 3 Press number button **6** (**▶||**) to resume/pause playback (if necessary).

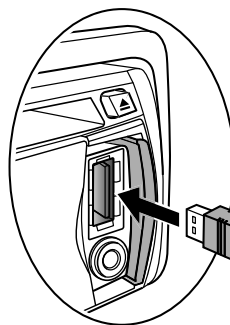
Discs that cannot be used

- Discs that are not round.
- Discs with coloring on the recording surface or discs that are dirty.
- You cannot play a Recordable/ ReWritable disc that has not been finalized. (For the finalization process refer to your disc writing software, and your disc recorder instruction manual.)
- 3-inch CD cannot be used. Attempt to insert using an adapter can cause malfunction.



USB terminal

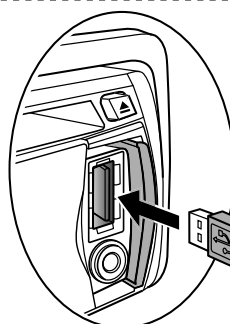
Slide open the cover.



Connecting a USB device

CA-U1EX
(optional accessory)

USB device (commercially available)



Connecting an iPod

Apple iPod
(commercially available)

KCA-iP102
(optional accessory)

The source automatically switches, and playback starts.

Continued...

Selecting Repeat Play

Press number button **4 (REP)** repeatedly to make a selection.

Audio CD : TRACK REPEAT, REPEAT OFF
AAC/MP3/WMA : FILE REPEAT,
FOLDER REPEAT, REPEAT OFF
iPod : FILE REPEAT, REPEAT OFF

Selecting Random Play

Press number button **3 (ALL RDM)** repeatedly to make a selection.

Audio CD : DISC RANDOM, RANDOM OFF
AAC/MP3/WMA/iPod : FOLDER RANDOM,
RANDOM OFF

- Press and hold number button **3 (ALL RDM)** to select "ALL RANDOM."
 - Applicable only if "RANDOM OFF" is selected initially.
 - Changes the iPod browsing item to "songs."

Selecting Scan Play

Press number button **2 (SCAN)** repeatedly to make a selection.

Audio CD : TRACK SCAN, SCAN OFF
AAC/MP3/WMA : FILE SCAN, SCAN OFF

- If scan play is selected, the unit starts playing the first 10-second intro of the music in the disc/current folder.
If "SCAN OFF" is selected, the unit resumes normal play of the current song.

Selecting a folder/track/file

- 1** Press **Q** to enter Music Search mode. "SEARCH" appears, then the current file name appears on the display.
- 2** Turn the volume knob to select a folder/track/file, then press to confirm.
 - To return to the root folder (or first track for audio CD), press **BAND**.
 - To return to the previous folder, press **↶**.
 - To cancel the Music Search mode, press and hold **↶**.

- **<** or **>** on the display indicates that preceded/next item is available.
- For USB device* and iPod: To skip search, press **⏮** / **⏭**.
 - * This operation is effective only for the files registered in the database created with Kenwood Music Editor. (page 16)
- To return to the top menu while in the search mode of an iPod, press **BAND**.

Direct Music Search using the remote controller (RC-405)

• Cannot be performed during playing of iPod, "KENWOOD Music Editor" media, Random Play, or Scan Play.

- 1** Press **DIRECT** to enter Direct Music Search Mode.
"--" appears.
 - 2** Press the number buttons to enter the track number.
 - 3** Press **⏮** / **⏭** to search for the music.
- To cancel the Direct Music Search Mode, press **↶** or **EXIT**.

Using the remote controller (RC-405)

In playback mode:

- FM+ / AM-** : Selects folder.
- ⏮ / ⏭ (+)** : Selects track/file.
- ENT ▶ ||** : Pauses/resumes playback.

In Music Search Mode:

- ENT ▶ ||** : Confirms selection.
- ▲ / ▼** : Selects folders/files.
- ↶** : Returns to the previous folder.

Alphabet Search and My Playlist for iPod

Selecting a song by alphabet

- 1** Press **Q** to enter Music Search mode. "SEARCH" appears.
- 2** Turn the volume knob to select a category, then press to confirm.
- 3** Press **Q** again to enter alphabet search mode.
"SEARCH <-->" appears.

- 4 Turn the volume knob to select the character to be searched for.
- 5 Press **◀◀ / ▶▶** to move to the entry position.
You can enter up to three characters.
- 6 Press the volume knob to start searching.
 - To cancel the Alphabet Search mode, press and hold **↩**.
 - A longer searching time is required if there are many songs or playlists in the iPod.
 - To search for a character other than A to Z and 0 to 9, enter only **"*"**.
 - The article (a, an, the) of songs name will be skipped during search.

Registering songs in the playlist

- 1 Select and play the song you want to register. (page 10)
- 2 Press and hold number button **5 (MEMO MY LIST)** to register.
"**## STORED**" (registration number) appears.
You can register up to 10 songs.
"**MEMORY FULL**" appears, if you try to register the eleventh song.
 - If you attempt to register a song from a different iPod, "**NO INFO**" followed by "**MPLIST DELETE**" appears.
To delete the playlist, turn the volume knob to select **"YES"**, then press to confirm.
 - You can also register the song displayed in the Music Search mode by following the same procedure.
 - Do not register Podcasts.

Playing a song on the playlist

- 1 Press number button **5 (MEMO MY LIST)** to display the playlist.
"**MY PLAYLIST**" appears.
- 2 Turn the volume knob to select the song you want, then press to confirm.
 - Random play cannot be performed during playback of a song in the playlist.

Deleting a song on the playlist

- 1 Press number button **5 (MEMO MY LIST)** to display the playlist.
"**MY PLAYLIST**" appears.
- 2 Turn the volume knob to select the song you want to delete, then press and hold the volume knob.
- 3 Turn the volume knob to select **"DELETE ONE"** or **"DELETE ALL,"** then press to confirm.
Select **"DELETE ALL"** to delete all the songs in the playlist.
- 4 Turn the volume knob to select **"YES,"** then press to confirm.
"**COMPLETE**" appears.

iPod control by Hand Mode

Press **1 (iPod)** to enter iPod mode.

HANDS ON :

Control iPod from the iPod. "**iPod MODE**" appears on the display.

HANDS OFF: Control iPod from the unit.

Adjust [SETTINGS] mode settings

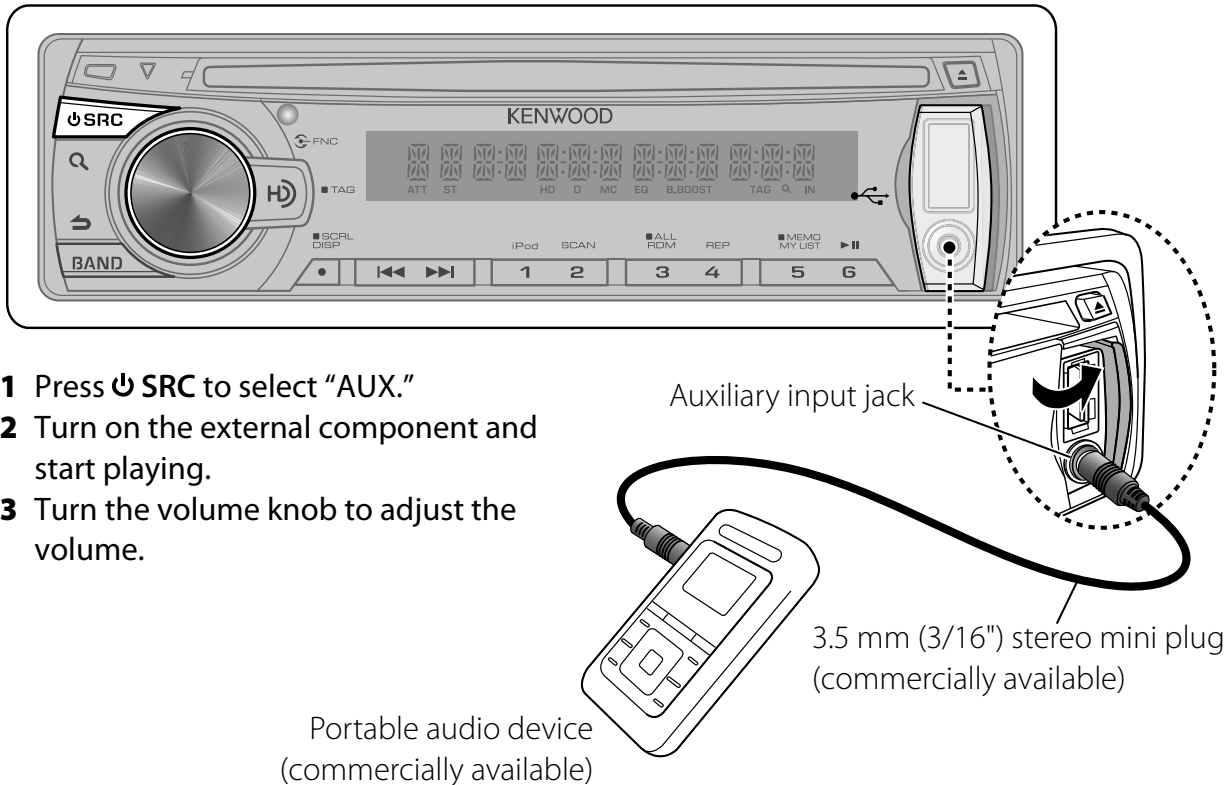
While listening to an iPod...

- 1 Press the volume knob to enter **[FUNCTION]** mode.
- 2 Turn the volume knob to select **[SETTINGS]**, then press to enter.
- 3 Turn the volume knob to make a selection, then press to confirm.
See the following table for selection.
- 4 Hold **↩** to finish the procedure.

| Item | Selectable setting (Preset: *) |
|---------------|--|
| SKIP SEARCH | 0.5%*/ 1%/ 5%/ 10%: Sets the ratio of skip when searching for a song in Music Search mode. (Keep pushing the ◀◀ / ▶▶ button for 3 seconds or longer skips songs at 10% regardless of the setting.) |
| MPLIST DELETE | YES: Deletes the saved My Playlist. ; NO*: Cancels. |

Listening to the other external components

Preparation : Make sure [ON1] or [ON2] is selected for [BUILT-IN AUX]. (page 6)



- 1 Press **SRC** to select "AUX."
- 2 Turn on the external component and start playing.
- 3 Turn the volume knob to adjust the volume.

Function settings

- 1 Press the volume knob to enter [FUNCTION] mode.
- 2 Turn the volume knob to select [AUDIO CONTROL] or [SETTINGS], then press to enter.
- 3 Turn the volume knob to make a selection, then press to confirm.
 - See table below for selection.
 - Repeat step 3 until the desired item is selected/activated.
 - Press **↶** to return to the previous item.
- 4 Hold **↶** to finish the procedure.

[AUDIO CONTROL] : While listening to any source except in STANDBY state...

| Item | Selectable setting (Preset: *) |
|-------------|---|
| SUB-W LEVEL | -15 — +15 (Preset: 0): Adjusts the subwoofer output level. |
| BASS BOOST | B.BOOST LV1*/ B.BOOST LV2: Selects your preferred bass boost level. ; OFF: Cancels. |
| SYSTEM Q | NATURAL*/ USER/ ROCK/ POPS/ EASY/ TOP40/ JAZZ/ GAME: Selects a preset sound mode suitable to the music genre. (Selects [USER] to use the customized bass, middle, and treble settings.) |

| Item | Selectable setting (Preset: *) |
|---------------|--|
| BASS LEVEL | -8 — +8 (Preset: 0): Source tone memory: Adjusts the level to memorize in each source. (Before making an adjustment, select the source you want to adjust.) |
| MID LEVEL | |
| TRE LEVEL | |
| BALANCE | L15 — R15 (Preset: 0): Adjusts the left and right speaker output balance. |
| FADER | R15 — F15 (Preset: 0): Adjusts the rear and front speaker output balance. |
| SUBWOOFER SET | ON*: Turns on the subwoofer output. ; OFF: Cancels. |
| DETAILED SET | LPF SUBWOOFER: THROUGH*: All signals are sent to the subwoofer. ; 85HZ/ 120HZ/ 160HZ: Frequencies higher than 85 Hz/ 120 Hz/ 160 Hz are cut off. |
| | SUB-W PHASE: REVERSE (180°)/ NORMAL (0°)*: Selects the phase angle of the subwoofer output to be in line with the speaker output for optimum performance. (Selectable only if a setting other than [THROUGH] is selected for [LPF SUBWOOFER].) |
| | SUPREME SET: ON*: Creates realistic sound by interpolating the high-frequency components that are lost in AAC/MP3/WMA audio compression. ; OFF: Cancels. (Selectable only when playback an AAC/MP3/WMA disc or a USB device, except iPod.) |
| | VOLUME OFFSET: -8 — +8 (for AUX) ; -8 — 0 (for other sources): Presets the volume adjustment level of each source. The volume level will automatically increase or decrease when you change the source. (Before making an adjustment, select the source you want to adjust.) |

[SUB-W LEVEL/ LPF SUBWOOFER/ SUB-W PHASE] is selectable only if [SUBWOOFER SET] is set to [ON].

[SETTINGS]

| Item | Selectable setting (Preset: *) |
|--------------|---|
| AUX NAME SET | AUX*/ DVD/ PORTABLE/ GAME/ VIDEO/ TV: Selects the desired name for the connected component. (Selectable only if "AUX" is selected as the source.) |
| CLOCK | CLOCK ADJUST: (For details, see page 6.) |
| DISPLAY | DIMMER SET: ON: Dims the display illumination. ; OFF*: Cancels. |
| | TEXT SCROLL: AUTO*/ ONCE: Selects to scroll the display information automatically, or scroll only once. ; OFF: Cancels. |

Muting upon the reception of a phone call

To use this feature, connect the MUTE lead to your telephone using a commercial telephone accessory. (See "Installation Manual" on a separate volume.)

When a call comes in, "CALL" appears.

- The audio system pauses.
- To continue listen to the audio system during a call, press **⏻ SRC**. "CALL" disappear and the audio system resumes.

When a call ends, "CALL" disappear.

- The audio system resumes.

Troubleshooting

| Symptom | Remedy/Cause |
|---|---|
| Sound cannot be heard. | Adjust the volume to the optimum level. / Check the cords and connections. |
| "PROTECT" appears and no operations can be done. | Check to be sure the terminals of the speaker leads are covered with insulating tape properly, then reset the unit. If "PROTECT" does not disappear, consult your nearest service center. |
| The unit does not work at all. | Reset the unit. |
| Radio reception is poor. / Static noise while listening to the radio. | Connect the antenna firmly. / Pull the antenna out all the way. |
| "MEMORY FULL" appears. | The tag memory of HD Radio receiver is full. / My Playlist in the iPod is full. |
| "NO TAG FNC" appears. | The connected iPod does not support iTunes tagging function. |
| "TAG ERROR" appears. | The unit is unable to complete transferring the tagged information to the iPod. |
| "IN" flashes. | The CD player is not operating properly. Reinsert the disc properly. If the condition did not improve, turn off the unit and consult your nearest service center. |
| CD-R/CD-RW cannot be played back and tracks cannot be skipped. | Insert a finalized CD-R/CD-RW (finalize with the component which you used for recording). |
| Disc sound is sometimes interrupted. | Stop playback while driving on rough roads. / Change the disc. / Check the cords and connections. |
| "NA FILE" appears. | The unit is playing an unsupported audio file. |
| "NO DISC" appears. | Insert a playable disc into the loading slot. |
| "TOC ERROR" appears. | The CD is quite dirty. / The CD is upside-down. / The CD is scratched a lot. Try another disc instead. |
| "ERROR 99" appears. | The unit is malfunctioning for some reason. Press the reset button on the unit. If the "ERROR 99" code does not disappear, consult your nearest service center. |
| "COPY PRO" appears. | A copy-protected file is played. |
| "READ ERROR" appears. | Copy the files and folders for the USB device again. If the error message is still displayed, initialize the USB device or use other USB devices. |
| "NO DEVICE" appears. | No USB device is connected. Connect an USB device, and change the source to USB again. |
| "NO MUSIC" appears. | The connected USB device contains no playable audio file. |
| "NA DEVICE" appears. | Connect a supported USB device, and check the connections. |
| "USB ERROR" appears. | Remove the USB device, turn the unit off, then turn it on again. If the unit is still showing the same display, try to connect another USB device. |
| "iPod FULL" appears. | The iPod memory is full. |
| "iPod ERROR" appears. | Reconnect the iPod. / Confirm that the software for the iPod is the latest version. |
| Noise is generated. | Skip to another track or change the disc. |
| Tracks cannot play back as you have intended them to play. | Playback order is determined when files are recorded. |

| Symptom | Remedy/Cause |
|--|---|
| "READING" keeps flashing. | Longer readout time is required. Do not use too many hierarchies and folders. |
| Elapsed playing time is not correct. | This is caused by how the tracks are recorded. |
| The number of songs contained in "SONGS" category of this unit is different from that contained in "SONGS" category of iPod. | Podcast files are not counted in this unit as this unit does not support the playback of podcast files. |
| Correct characters are not displayed (e.g. album name). | This unit can only display letters (upper case), numbers, and a limited number of symbols. |


Maintenance

Cleaning the unit: Wipe off the dirt on the panel with a dry silicon or soft cloth. Failure to observe this precaution may result in damage to the monitor or unit.

Cleaning the connector: Wipe off dirt on the connector of the unit and faceplate. Use a cotton swab or cloth.

Handling discs

- Do not touch the recording surface of the disc.
- Do not stick tape etc. on the disc, or use a disc with tape stuck on it.
- Do not use any accessories for the disc.
- Clean from the center of the disc and move outward.
- Clean the disc with a dry silicon or soft cloth. Do not use any solvents.
- When removing discs from this unit, pull them out horizontally.
- Remove the rims from the center hole and disc edge before inserting a disc.



This HD Radio receiver enables:

PSD

HD2/HD3

Digital Sound

iTunes® Tagging

HD Radio Technology manufactured under license from iBiquity Digital Corporation. U.S. and Foreign Patents. HD Radio™ and the HD, HD Radio, and "Arc" logos are proprietary trademarks of iBiquity Digital Corp.

PSD) Program Service Data: Contributes to the superior user experience of HD Radio Technology. Presents song name, artist, station IDs, HD2/HD3 Channel Guide, and other relevant data streams.

HD2/HD3) Adjacent to traditional main stations are extra local FM channels. These HD2/HD3 Channels provide new, original music as well as deep cuts into traditional genre.

Digital Sound) Digital, CD-quality sound. HD Radio Technology enables local radio stations to broadcast a clean digital signal. AM sounds like today's FM and FM sounds like a CD.

iTunes® Tagging) iTunes® Tagging provides you the opportunity to discover a wide range of content and the means to "tag" that content for later review and purchase from the iTunes® Store.

About Audio file

- Playable Audio file: AAC-LC (.m4a), MP3 (.mp3), WMA (.wma)
- Playable disc media: CD-R/RW/ROM
- Playable disc file format: ISO 9660 Level 1/2, Joliet, Romeo, Long file name.
- Playable USB device file system: FAT16, FAT32

Although the audio files are complied with the standards listed above, the play maybe impossible depending on the types or conditions of media or device.

About USB device

- This unit can play AAC/MP3/WMA files stored on a USB mass storage class device.
- Install the USB device in the place where it will not prevent you from driving your vehicle properly.
- You cannot connect a USB device via a USB hub and Multi Card Reader.
- Make sure all important data has been backed up to avoid losing the data.
- Connecting a cable whose total length is longer than 5 m can result in abnormal playback.

About compatible iPod/iPhone

Made for

- iPod touch (4th generation)
- iPod touch (3rd generation)
- iPod touch (2nd generation)
- iPod touch (1st generation)
- iPod classic
- iPod with video
- iPod nano (6th generation)
- iPod nano (5th generation)
- iPod nano (4th generation)
- iPod nano (3rd generation)
- iPod nano (2nd generation)
- iPod nano (1st generation)
- iPhone 4
- iPhone 3GS
- iPhone 3G
- iPhone

- For the latest compatible list and software version of iPod/iPhone, see:
www.kenwood.com/cs/ce/ipod
- If you start playback after connecting the iPod, the music that has been played by the iPod is played first.
In this case, "RESUMING" is displayed without displaying a folder name, etc.
Changing the browse item will display a correct title, etc.
- You cannot operate iPod if "KENWOOD" or "✓" displayed on iPod.

About "KENWOOD Music Editor"

- This unit supports the PC application "KENWOOD Music Editor Light ver1.1" or later.
- When you use the audio file with database information added by the "KENWOOD Music Editor Light ver1.1," you can search a file by title, album or artist name using Music Search.
- In the Instruction manual, the term "USB device" is used to mean the device that contains audio files with database information added with KENWOOD Music Editor.
- "KENWOOD Music Editor Light ver1.1" is available from the following web site:
www.kenwood.com/cs/ce/
- For further information on "KENWOOD Music Editor Light ver1.1," refer to the site above or the application help.

Specifications

FM tuner section

Frequency range (200 kHz space):
87.9 MHz — 107.9 MHz
Usable sensitivity (S/N = 26 dB):
11.2 dBf (1.0 μ V/75 Ω)
Quieting sensitivity (DIN S/N = 46 dB):
19.2 dBf (2.5 μ V/75 Ω)
Frequency response (± 3 dB): 30 Hz — 15 kHz
Signal-to-Noise ratio (MONO): 63 dB
Stereo separation (1 kHz): 40 dB

Digital FM tuner section

Frequency range (200 kHz space):
87.9 MHz — 107.9 MHz
Frequency response (± 3 dB): 20 Hz — 20 kHz
Signal-to-Noise ratio (STEREO): 70 dB

AM tuner section

Frequency range (10 kHz space):
530 kHz — 1 700 kHz
Usable sensitivity (S/N=20 dB): 31 dB μ (36 μ V)

Digital AM tuner section

Frequency range (10 kHz space):
530 kHz — 1 700 kHz
Frequency response (± 3 dB): 40 Hz — 15 kHz
Signal-to-Noise ratio (STEREO): 70 dB

CD player section

Laser diode: GaAlAs
Digital filter (D/A): 8 Times Over Sampling
D/A converter: 24 Bit
Spindle speed: 500 rpm — 200 rpm (CLV)
Wow & Flutter: Below Measurable Limit
Frequency response (± 1 dB): 20 Hz — 20 kHz
Total harmonic distortion (1 kHz): 0.01 %
Signal-to-Noise ratio (1 kHz): 105 dB
Dynamic range: 90 dB
AAC decode: AAC-LC ".m4a" files
MP3 decode: Compliant with MPEG-1/2 Audio
Layer-3
WMA decode: Compliant with Windows
Media Audio

USB interface

USB standard: USB1.1/ 2.0 (Full speed)
Maximum supply current: 500 mA
File system: FAT16/ 32
AAC decode: AAC-LC ".m4a" files
MP3 decode: Compliant with MPEG-1/2 Audio
Layer-3
WMA decode: Compliant with Windows
Media Audio

Audio section

Maximum output power: 50 W \times 4
Full bandwidth power (at less than 1 % THD):
22 W \times 4
Speaker impedance: 4 Ω — 8 Ω
Tone action: Bass: 100 Hz ± 8 dB
Middle: 1 kHz ± 8 dB
Treble: 10 kHz ± 8 dB
Preout level / load (CD): 2 000 mV/10 k Ω
Preout impedance: \leq 600 Ω

Auxiliary input section

Frequency response (± 3 dB): 20 Hz — 20 kHz
Input maximum voltage: 1 200 mV
Input impedance: 10 k Ω

General

Operating voltage (11 V — 16 V allowable): 14.4 V
Maximum current consumption: 10 A
Installation size (W \times H \times D):
182 mm \times 53 mm \times 158 mm
(7-3/16" \times 2-1/8" \times 6-1/4")
Weight: 1.3 kg (2.9 lbs)

Subject to change without notice.

CAUTION

Use of controls or adjustments or performance of procedures other than those specified herein may result in hazardous radiation exposure.

In compliance with Federal Regulations, following are reproductions of labels on, or inside the product relating to laser product safety.

Kenwood Corporation
2967-3, ISHIKAWA-MACHI,
HACHIOJI-SHI
TOKYO, JAPAN

KENWOOD CORP. CERTIFIES THIS EQUIPMENT
CONFORMS TO DHHS REGULATIONS NO.21 CFR.
1040. 10, CHAPTER 1, SUBCHAPTER J.

Location : Top Panel

FCC WARNING

This equipment may generate or use radio frequency energy. Changes or modifications to this equipment may cause harmful interference unless the modifications are expressly approved in the instruction manual. The user could lose the authority to operate this equipment if an unauthorized change or modification is made.

FCC NOTE

This equipment has been tested and found to comply with the limits for a Class B digital device, pursuant to Part 15 of the FCC Rules. These limits are designed to provide reasonable protection against harmful interference in a residential installation. This equipment may cause harmful interference to radio communications, if it is not installed and used in accordance with the instructions. However, there is no guarantee that interference will not occur in a particular installation. If this equipment does cause harmful interference to radio or television reception, which can be determined by turning the equipment off and on, the user is encouraged to try to correct the interference by one or more of the following measures:

- Reorient or relocate the receiving antenna.
- Increase the separation between the equipment and receiver.
- Connect the equipment into an outlet on a circuit different from that to which the receiver is connected.
- Consult the dealer or an experienced radio/TV technician for help.

HD Radio Technology manufactured under license from iBiquity Digital Corporation. U.S. and Foreign Patents. HD Radio™ and the HD, HD Radio, and "Arc" logos are proprietary trademarks of iBiquity Digital Corp.

The "AAC" logo is a trademark of Dolby Laboratories.

- "Made for iPod," and "Made for iPhone" mean that an electronic accessory has been designed to connect specifically to iPod, or iPhone, respectively, and has been certified by the developer to meet Apple performance standards. Apple is not responsible for the operation of this device or its compliance with safety and regulatory standards. Please note that the use of this accessory with iPod or iPhone may affect wireless performance.
- iPhone, iPod, iPod classic, iPod nano, iPod touch and iTunes are trademarks of Apple Inc., registered in the U.S. and other countries.



This symbol mark indicates that Kenwood manufactured this product so as to decrease harmful influence on the environment.

ENGLISH/ FRANÇAIS/ ESPAÑOL

Part list:

| | |
|---|------|
| Ⓐ Faceplate..... | (x1) |
| Ⓑ Escutcheon..... | (x1) |
| Ⓒ Mounting sleeve..... | (x1) |
| Ⓓ Casing for faceplate..... | (x1) |
| Ⓔ Wiring harness..... | (x1) |
| Ⓕ Removal tool..... | (x2) |
| Ⓖ Flat head screw (for Nissan cars)..... | (x4) |
| Ⓗ Round head screw (for Toyota cars)..... | (x4) |

Liste de pièces:

| | |
|--|------|
| Ⓐ Façade..... | (x1) |
| Ⓑ Écusson..... | (x1) |
| Ⓒ Manchon de montage..... | (x1) |
| Ⓓ Boîtier pour la façade..... | (x1) |
| Ⓔ Câblage électrique..... | (x1) |
| Ⓕ Outil de démontage..... | (x2) |
| Ⓖ Vis à tête plate (pour les voitures Nissan)..... | (x4) |
| Ⓗ Vis à tête ronde (pour les voitures Toyota)..... | (x4) |

Lista de componentes:

| | |
|---|------|
| Ⓐ Placa frontal..... | (x1) |
| Ⓑ Escudete..... | (x1) |
| Ⓒ Manguito de montaje..... | (x1) |
| Ⓓ Estuche de la placa frontal..... | (x1) |
| Ⓔ Mazo de conductores..... | (x1) |
| Ⓕ Herramienta de extracción..... | (x2) |
| Ⓖ Tornillo de cabeza plana (para los automóviles Nissan)..... | (x4) |
| Ⓗ Tornillo de cabeza redonda (para los automóviles Toyota)..... | (x4) |

Warning / Avertissement / Advertencia

- The unit can only be installed in a car with a 12 V DC power supply, negative ground.
- If you connect the ignition wire (red) and the battery wire (yellow) to the car chassis (ground), you may cause a short circuit, that in turn may start a fire. Always connect those wires to the power source running through the fuse box.
- Disconnect the battery's negative terminal and make all electrical connections before installing the unit.
- Insulate unconnected wires with vinyl tape or other similar material. If no connections are made, do not let the wire come out from the tab to prevent short circuit.
- Be sure to ground this unit to the car's chassis again after installation.
- L'appareil peut uniquement être installé dans une voiture avec une alimentation de 12 V CC, à masse négative.
- Si vous connectez le câble d'allumage (rouge) et le câble de batterie (jaune) au châssis de la voiture (masse), vous risquez de causer un court-circuit qui peut provoquer un incendie. Connectez toujours ces câbles à la source d'alimentation passant par le boîtier de fusibles.
- Déconnectez la borne négative de la batterie et réalisez toutes les connexions avant d'installer l'appareil.
- Isolez les câbles non-connectés avec un ruban de vinyle ou d'un autre matériel similaire. Si aucune connexion n'est faite, ne laissez pas le fil sortir de la languette pour éviter tout court-circuit.
- Assurez-vous de raccorder de nouveau la mise à la masse de cet appareil au châssis de la voiture après l'installation.
- La unidad solo puede instalarse en un automóvil con fuente de alimentación de 12 VCC con masa negativa.
- Si conecta el cable de encendido (rojo) y el cable de la batería (amarillo) al chasis del automóvil (tierra), podría producir un cortocircuito y esto a su vez, un incendio. Conecte siempre esos cables a la fuente de alimentación que pasa por la caja de fusibles.
- Desconecte el terminal negativo de la batería y realice todas las conexiones eléctricas antes de instalar la unidad.
- Entorle los cables no conectados con una cinta de vinilo u otro material similar para que queden aislados. Si no se efectúan las conexiones, no deje que el cable sobresalga de la lengüeta para evitar cortocircuitos.
- Asegúrese de volver a conectar a masa esta unidad al chasis del automóvil después de la instalación.

Caution / Précautions / Precaución

- If your car's ignition does not have an ACC position, connect the ignition wire to a power source that can be turned on and off with the ignition key. If you connect the ignition wire to a power source with a constant voltage supply, as with battery wires, the battery may die.
- Do not use your own screws. Use only the screws provided.
- Install this unit in the console of your vehicle. Make sure the faceplate will not hit the lid of the console (if any) when closing and opening.
- After the unit is installed, check whether the brake lamps, blinkers, wipers, etc. on the car are working properly.
- Mount the unit so that the mounting angle is 30° or less.
- If the fuse blows, first make sure the wires are not touching to cause a short circuit, then replace the old fuse with one that has the same rating.
- Connect the speaker wires correctly to the terminals to which they correspond. The unit may be damaged or fail to work if you share the ⊖ wires or ground them to any metal part in the car.
- When only two speakers are being connected to the system, connect the connectors either to both the front output terminals or to both the rear output terminals (do not mix front and rear).
- Do not touch the metal part of this unit during and shortly after the use of the unit. Metal part such as the heat sink and enclosure become hot.
- Mounting and wiring this product requires skills and experience. For safety's sake, leave this work to professionals. If you experience problems during installation, consult your Kenwood dealer.
- Si l'allumage de votre voiture n'a pas de position ACC, connectez le câble d'allumage à une source d'alimentation qui peut être mise sous et hors tension avec la clef de contact. Si vous connectez le câble d'allumage à une source d'alimentation constante, comme un câble de batterie, la batterie risque de se décharger.
- N'utilisez pas vos propres vis. N'utilisez que les vis fournies.
- Installez cet appareil dans la console de votre véhicule. Assurez-vous que la façade ne heurtera pas le couvercle de la console (s'il y en a) lors de sa fermeture ou de son ouverture.
- Après avoir installé l'appareil, vérifiez si les lampes de frein, les indicateurs, les clignotants, etc. de la voiture fonctionnent correctement.
- Monter l'unité de façon à ce que l'angle de montage soit de 30° ou moins.
- Si un fusible saute, assurez-vous d'abord que les câbles n'ont pas causé de court-circuit puis remplacez le vieux fusible par un nouveau de même valeur.
- Connectez séparément chaque câble d'enceinte à la borne correspondante. L'appareil peut être endommagé si le câble négatif ⊖ pour une des enceintes ou le câble de masse entre en contact avec une partie métallique du véhicule.
- Quand deux haut-parleurs seulement sont connectés au système, connectez les câbles soit aux prises de sortie avant, soit aux prises de sortie arrière (c.a.d. ne mélangez pas l'avant et l'arrière).
- Ne touchez pas la partie métallique de cet appareil pendant ou juste après son utilisation. Les parties métalliques, comme le dissipateur de chaleur et le boîtier, deviennent chaudes.
- Le montage et le câblage de ce produit nécessite des compétences et de l'expérience. Pour des raisons de sécurité, laissez ce travail à des professionnels. Si vous rencontrez des problèmes pendant l'installation, consultez votre revendeur Kenwood.
- Si el encendido de su automóvil no está provisto de la posición ACC, conecte los cables de encendido a una fuente de alimentación que pueda conectarse y desconectarse con la llave de encendido. Si conecta el cable de encendido a una fuente de alimentación que recibe un suministro constante de alimentación tales como los cables de la batería, la batería podría descargarse.
- No utilice sus propios tornillos. Utilice sólo los tornillos incluidos.
- Instale esta unidad en la consola de su vehículo. Asegúrese de que la placa frontal no golpee la tapa de la consola (si la hubiera) cuando la abre y la cierra.
- Después de instalar la unidad, compruebe que las lámparas de freno, las luces intermitentes, el limpiaparabrisas, etc. funcionen satisfactoriamente.
- Instale la unidad en un ángulo de 30° o menos.
- Si se funde el fusible, en primer lugar asegúrese de que los cables no hayan causado un cortocircuito, y luego reemplace el fusible usado por otro del mismo régimen.
- Conecte los cables de los altavoces a cada uno de los terminales correspondientes. La conexión compartida de los cables ⊖ o la conexión a tierra de los mismos a cualquier parte metálica del automóvil podrá dañar la unidad o impedir su correcto funcionamiento.
- Cuando se han conectado solamente dos altavoces al sistema, conecte los conectores ya sea a ambos terminales de salida delanteros, o a ambos terminales de salida traseros (o sea, no mezcle terminales delanteros y traseros).
- No toque las partes metálicas de la unidad durante o justo después de utilizar la unidad. Las partes metálicas, tales como el radiador o la carcasa, pueden estar muy calientes.
- La instalación y cableado de este producto requiere de habilidad y experiencia. Por seguridad, deje que un profesional realice este trabajo. Si tiene problemas durante la instalación, consulte con su distribuidor Kenwood.

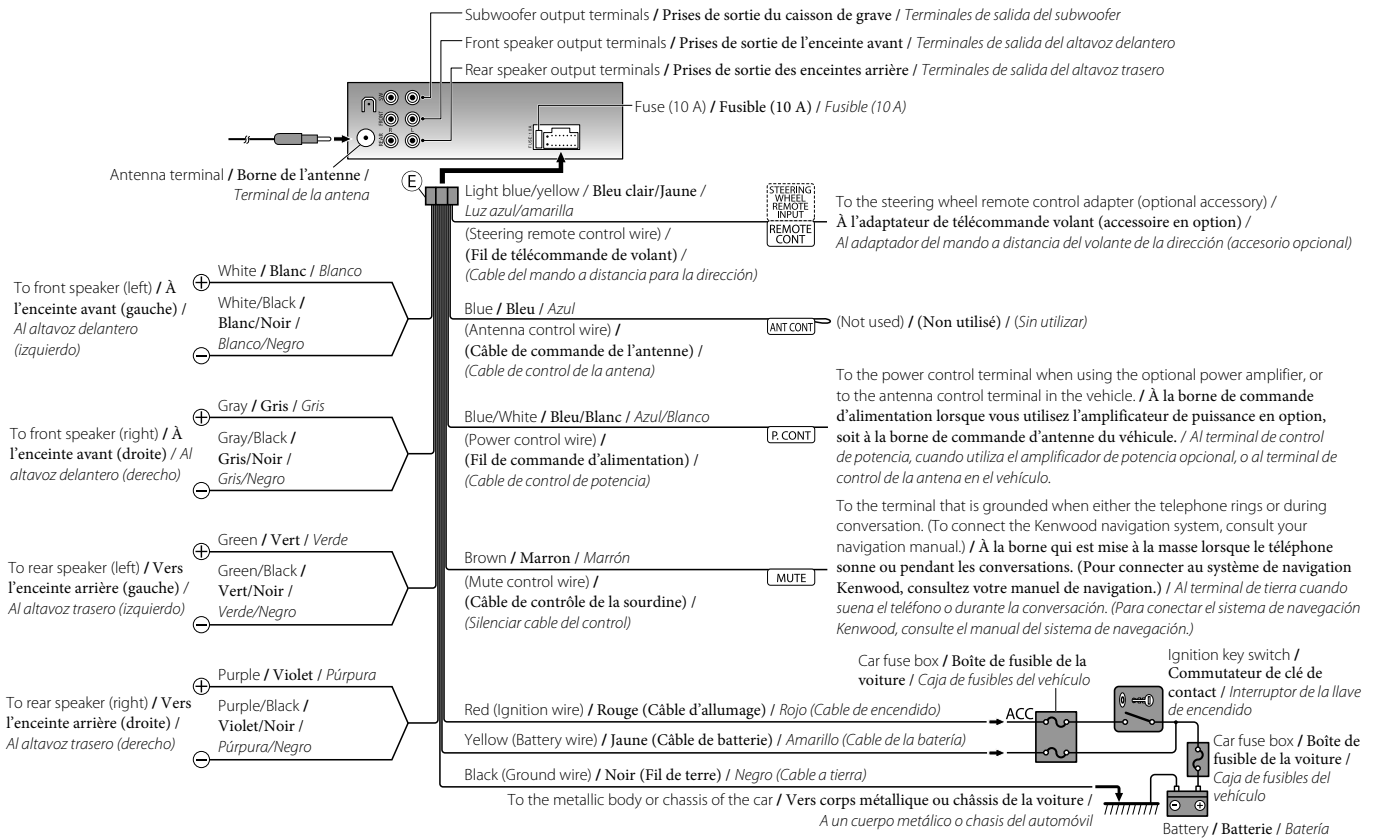
Basic procedure / Procédure de base / Procedimiento básico

- 1 Remove the key from the ignition switch, then disconnect the \ominus terminal of the car battery.
- 2 Make proper input and output wire connections.
→ "Wiring connection"
- 3 Install the unit to your car.
→ "Installing the unit"
- 4 Reconnect the \ominus terminal of the car battery.
- 5 Reset the unit.

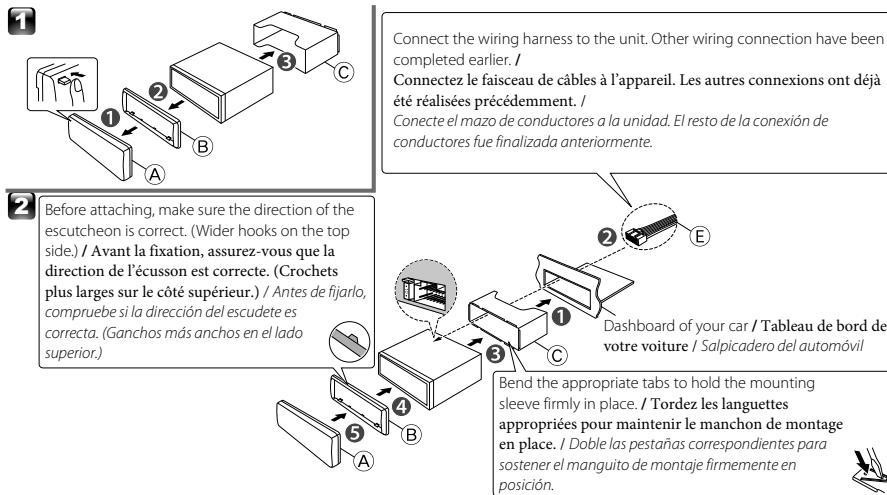
- 1 Retirez la clé de contact, puis déconnectez la borne \ominus de la batterie de la voiture.
- 2 Réalisez une connexion correcte des fils d'entrée et sortie.
→ "Connexions"
- 3 Installez l'appareil dans votre voiture.
→ "Installation de l'appareil"
- 4 Reconnectez la borne \ominus de la batterie de la voiture.
- 5 Réinitialisez l'appareil.

- 1 Quite la llave del interruptor de encendido; después, desconecte el terminal \ominus de la batería del automóvil.
- 2 Realice las conexiones de los cables de entrada y salida correspondientes.
→ "Conexión del cableado"
- 3 Instale la unidad en su automóvil.
→ "Instalación de la unidad"
- 4 Vuelva a conectar el terminal \ominus de la batería del automóvil.
- 5 Reinicialice la unidad.

Wiring connection / Connexions / Conexión del cableado

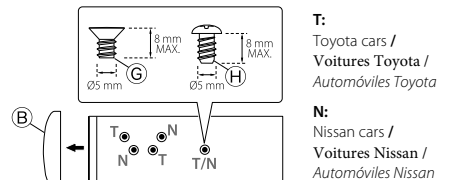


Installing the unit / Installation de l'appareil / Instalación de la unidad



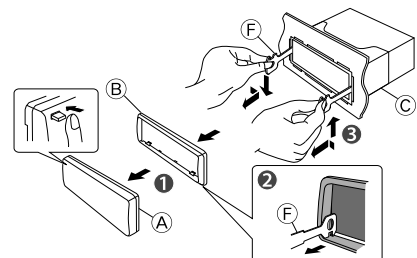
Installing without using the mounting sleeve (Japanese car) / Installation sans utiliser le manchon de montage (voiture japonaise) / Instalación sin el manguito de montaje (automóviles japoneses)

- 1 Remove the mounting sleeve and escutcheon from the unit. / Retirez le manchon de montage et l'écusson de l'appareil. / Desmante el manguito de montaje y el escudete de la unidad.
- 2 Align the holes in the unit (on both sides) with the vehicle mounting bracket and secure the unit with the supplied screws. / Alinee les entailles de l'appareil (des deux côtés) avec le support de montage du véhicule et fixez l'appareil avec les vis fournis. / Alinee los orificios de la unidad (en ambos lados) con la ménsula de montaje del vehículo y fije la unidad con los tornillos suministrados.



Removing the unit / Retrait de l'appareil / Extracción de la unidad

- 1 Detach the faceplate. / Retirez la façade. / Desmante la placa frontal.
- 2 Engage the catch pin on the removal tools into the holes on both sides of the escutcheon, then pull it out. / Engagez le loquet sur des outils de retrait dans les trous de chaque côté de l'écusson, puis tirez vers l'extérieur. / Enganche la uña de agarre de las herramientas de extracción en los orificios a ambos lados del escudete y tire de él para quitarlo.
- 3 Insert the removal tools deeply into the slots on each side, then follow the arrows instructions as shown on the right. / Insérez les outils de retrait profondément dans les fentes de chaque côté, puis suivez les instructions des flèches indiquées ci-à droite. / Inserte profundamente las herramientas de extracción en las ranuras a ambos lados; después, siga la dirección de las flechas, como se muestra a la derecha.



MILITARY

Units purchased through the U.S.A. military exchange service overseas may be serviced under warranty in the continental U.S.A., subject to the following conditions.

- 1) The original warranty is in effect.
- 2) Proof of purchase is provided to the servicer.

WARRANTY FOR MILITARY MARKET

Kenwood corporation is proud of the quality and workmanship of its audio equipment. This unit has been properly designed, tested and inspected before it was shipped to you. If properly installed and operated in accordance with instructions furnished, it should give you an optimum reliable performance.

WARRANTY PERIOD

This product is warranted for a period of (1) year from the date of the original purchase.

SCOPE OF WARRANTY

Except as specified below, this warranty covers all defects in materials and workmanship of the Kenwood brand products.

During the warranty period, any authorized Kenwood Service Center in the military market listed in the back of this warranty card will provide you free-of-charge both parts and labor required to correct any defect in materials or workmanship.

The following are not covered by this warranty.

1. Voltage conversions.
2. Periodic check-ups which do not disclose any defect covered by the warranty.
3. Cabinets, grilles, other exterior finishes, belts, tape heads, and other non-durable parts and accessories.
4. Units on which the serial number has been effaced, modified or removed.
5. Installation and/or removal charges.
6. Damaged magnetic tapes.
7. House call charges for any repairs.
8. Shipping or delivery charges to or from an authorized Kenwood Service Center.
9. This warranty will not cover any failure that is due to any of the following conditions in accordance with the visual inspection of the authorized Kenwood Service Center:

* Improper maintenance or repair, including the installation of parts or accessories that do not conform to the quality and specifications of the original parts.

* Misuse, abuse, neglect, unauthorized product modification or failure to follow instructions contained in the Owner's Manual.

* Accidental or intentional damages.

* Repairs or attempted repairs by an unauthorized agency. (All repairs must be performed at an authorized Kenwood Service Center.)

* Damages or deteriorations caused during shipment (Claims must be presented to the carrier).

* Damages or deteriorations resulting from removal and/or replacement.

PURCHASER'S RESPONSIBILITIES

As the purchaser of a new Kenwood brand product, you are requested to do the following in order to obtain Kenwood warranty service.

1. Retain your sales slip or other evidence of purchase for proving your eligibility for requesting Kenwood warranty service.
2. Make your unit available to an authorized Kenwood Service Center in the military market for inspection and approved warranty service, or ship your unit in its original carton box or equivalent, fully insured and shipping charges prepaid, to the authorized Kenwood Service Center.

LIMITATION OF IMPLIED WARRANTIES

Any and all implied warranties, including warranties of merchantability and fitness for a particular purpose, shall be limited in duration to the length of this warranty.

EXCLUSION OF CERTAIN DAMAGES

KENWOOD's liability for any defective product is limited to the repair or replacement of said product, at our option, and shall not include damages of any kind, whether incidental, consequential or otherwise, except to the extent prohibited by applicable law.

KENWOOD AUTHORIZED SERVICE CENTERS IN MILITARY MARKET

JAPAN:

Yokota

Kenwood Rep.; c/o
Yokota BX, JAAX AAFES-PAC,
APO San Francisco 96328

Zama

Kenwood Rep.; c/o
Zama PX, JAAX AAFES-PAC,
APO San Francisco 96343

Misawa

Kenwood Rep.; c/o
Misawa BX, JAAX AAFES-PAC,
APO San Francisco 96519

Yokosuka

Kenwood Rep.; c/o
A-33, Yokosuka NEX No. 260-010
FPO Seattle 98760

Atsugi

Kenwood Rep.; c/o
Atsugi NEX No. 260-020 FPO Seattle
98767

Iwakuni

Kenwood Rep.; c/o
Marine Corps Exchange, Marine Corps
Air Station,
FPO Seattle 98764

Sasebo

Sasebo NEX;
Navy Exchange 260-040
F.A. Box 115 FPO Seattle 98766

Okinawa

Kenwood Rep.; c/o
OWAX, AAFES-PAC, APO San Francisco
96230

KOREA:

Kenwood Rep.; c/o
KOAX Repair Shop, AAFES-PAC
DD-Camp Market, APO San Francisco
96488

GUAM:

Kenwood Rep.; c/o
Guam NEX No. 230-010,
FPO San Francisco 96630
Kenwood Rep.; c/o
GUAX, AAFES-PAC, APO San Francisco
96334

U.S.A.:

Hawaii

Kenwood Factory Service
99-994 Iwaena St., Aiea, Hawaii 96701

Alaska

Vista Radio TV;
861 East Loop Road, Anchorage, Alaska
99501
Anchorage Commercial Electronics, Inc.;
1450 East 9th Ave., Anchorage, Alaska
99501

In The Continental U.S.A.

For Nearest Authorized Service Center;
Tel: 1-800-536-9663

Kenwood Service U.S.A.

Kenwood Factory Service;
P.O. Box 22745, 2201 East Dominguez
Street,
Long Beach, California 90801-5745
Tel: (310) 639-5300

EUROPE:

Please inquire at the military resale
outlets where you bought your Kenwood
products, or
KENWOOD ELECTRONICS
DEUTSCHLAND GMBH:
Rembrücker-Str. 15, 63150 Heusenstamm,
Germany
Tel.: 49-06104-69010

KENWOOD

Warranty Card

Identification du produit
Modelo do aparelho e numero de série
Model number & serial number

Revendeur & cachet
Nome da loja e carimbo
Dealer & stamp

Date d'achat
Data da compra
Purchase date

Nom & adresse du client
Nome e endereço do cliente
Name & address of customer

Attention:

This card and receipt (or invoice) are necessary to purchase a new panel in case of theft or damage.

Attention:

Vous aurez besoin de cette carte et du reçu (ou de la facture) pour acheter un nouveau panneau en cas de vol ou d'endommagement.

Atenção:

Em caso de dano ou perda do painel frontal, este Certificado de Garantia e a Nota Fiscal de compra serão requisitados para a aquisição de um novo painel.

© B46-0812-00/01 (K) (10/02)

Dear Customer,

Thank you for purchasing this Kenwood product. As mentioned in the pages of this booklet, our warranty is only valid in the countries listed. If your country is not listed please contact your retailer for information on warranty procedure, or write to:

KENWOOD Corporation Customer Information Center

1-16-2, Hakusan, Midori-ku, Yokohama-shi, Kanagawa, 226-8525 Japan

| U.S.A. | KENWOOD USA CORPORATION |
|---|--|
| <p>This warranty will be honored only in the U.S.A.</p> <p>KENWOOD LIMITED WARRANTY FOR CAR STEREO COMPONENTS</p> <p>HOW LONG IS THE WARRANTY Kenwood U.S.A. Corporation ("Kenwood") warrants this product for a period of one (1) year from the date of original purchase.</p> <p>WHAT IS COVERED AND WHAT IS NOT COVERED Except as specified below, this warranty covers all defects in material and workmanship in Kenwood car stereo components. The following are not covered by the warranty:</p> <ol style="list-style-type: none"> Any product which is not distributed in the U.S.A. by Kenwood or which is not purchased in the U.S.A. from an authorized Kenwood car stereo dealer or an automobile dealer, unless the product is purchased through the U.S.A. Military Exchange Service. Any product on which the serial number has been defaced, modified or removed. Damage, deterioration or malfunction resulting from: <ol style="list-style-type: none"> Any shipment of the product (claims must be presented to the carrier). Installation or removal of the product. Accident, acts of nature, misuse, abuse, neglect, unauthorized product modification or failure to follow instructions supplied with the product. Repair or attempted repair by anyone not authorized by Kenwood. Any other cause which does not relate to a product defect. | <p>WHO IS PROTECTED This warranty is enforceable only by the original purchaser.</p> <p>WHAT WE WILL PAY FOR We will pay for all labor and material expenses for covered items. Payment of shipping charges is discussed in the next section of this warranty.</p> <p>HOW TO OBTAIN WARRANTY SERVICE If your KENWOOD product ever needs service:</p> <ol style="list-style-type: none"> Take or ship it to any KENWOOD Authorized Service Center in the U.S.A. along with a complete description of the problem, (if you are uncertain as to whether a Service Center is authorized, please call 1-800-KENWOOD for the nearest Service Center. 1-800-536-9663). Although you must pay any shipping charges if it is necessary to ship the product for warranty service, we will pay the return shipping charges if the repairs are covered by the warranty within the United States. Whenever your units are taken or sent for warranty service, you must include a copy of the original dated sales receipt as proof of warranty coverage. <p>LIMITATION OF IMPLIED WARRANTIES ALL IMPLIED WARRANTIES, INCLUDING WARRANTIES OF MERCHANTABILITY AND FITNESS FOR A PARTICULAR PURPOSE, ARE LIMITED IN DURATION TO THE LENGTH OF THIS WARRANTY.</p> <p>KENWOOD USA CORPORATION P.O. Box 22745, 2201 East Dominguez Street, Long Beach, CA 90801-5745 Tel: (310) 639-5300</p> |
| | <p>EXCLUSION OF DAMAGES KENWOOD'S LIABILITY FOR ANY DEFECTIVE PRODUCT IS LIMITED TO THE REPAIR OR REPLACEMENT OF THE PRODUCT AT OUR OPTION. KENWOOD SHALL NOT BE LIABLE FOR:</p> <ol style="list-style-type: none"> INSTALLATION OR REMOVAL CHARGES, DAMAGE TO OTHER PROPERTY CAUSED BY ANY DEFECTS IN KENWOOD CAR STEREO COMPONENTS, DAMAGES BASED UPON INCONVENIENCE, LOSS OF USE OF THE PRODUCT; OR ANY OTHER DAMAGES, WHETHER INCIDENTAL, CONSEQUENTIAL OR OTHERWISE. <p>SOME STATES DO NOT ALLOW LIMITATIONS ON HOW LONG AN IMPLIED WARRANTY LASTS AND/OR DO NOT ALLOW THE EXCLUSION OR LIMITATION OF INCIDENTAL OR CONSEQUENTIAL DAMAGES, SO THE ABOVE LIMITATIONS AND EXCLUSIONS MAY NOT APPLY TO YOU.</p> <p>This warranty gives you specific legal rights, and you may also have other rights which vary from state to state.</p> <p>If a problem develops during or after the Limited Warranty Period, or if you have any questions regarding the operation of the product, you should contact your KENWOOD Authorized Dealer or Authorized Service Center. If the problem or your question is not handled to your satisfaction, please contact our Customer Relations Department at the address listed below:</p> |

| BRASIL | JVC KENWOOD DO BRASIL COMERCIO DE ELECTRONICOS LTDA. |
|---|---|
| <p>O fabricante garante o produto identificado na Nota Fiscal de venda ao consumidor contra qualquer defeito de fabricação ou de matéria-prima durante o período de garantia. Esta garantia é válida no território brasileiro, condicionado ao uso correto do aparelho conforme o manual de instruções.</p> <p>PERÍODO DE GARANTIA Este produto é garantido pelo prazo de 01 (um) ano, incluindo o período estabelecido por lei, a partir da data de aquisição, comprovada mediante a apresentação da respectiva Nota Fiscal de venda ao consumidor final. Eventuais reparos realizados no produto durante o período de garantia não implicam na dilatação do seu prazo.</p> <p>EXCLUSÃO DA GARANTIA</p> <ol style="list-style-type: none"> Produtos com o número de série ou certificado de garantia rasurados, adulterados ou ilegíveis; Defeitos resultantes de acidentes (quedas, batidas e etc), uso em desacordo com o manual de instruções, má utilização, ligação à fonte de tensão diferente da especificada no Manual de Instruções, modificações não autorizadas; Danos causados por agentes da natureza (Ex: Chuvas, raios, maresia, enchentes e etc); Defeitos ou danos em decorrência de consertos realizados por pessoas não autorizadas; Defeitos ou danos resultantes do uso de peças ou dispositivos não conformes às especificações da Kenwood; Danos ou deteriorações aos acabamentos externos, partes cosméticas, cabos, adaptadores, antenas, fitas, cabeças gravadoras, CDs ou danos causados por pilhas defeituosas ou com vazamento; Defeitos ou danos devido ao transporte (reclamações devem ser feitas junto à empresa transportadora); Qualquer outra causa que não esteja relacionada a defeitos de matéria-prima e de fabricação; Danos causados por tentativa de roubo ou furto; Danos causados por uso de CDs de má qualidade. | <p>CONCERTO EM GARANTIA É indispensável a apresentação deste Certificado de Garantia devidamente preenchido, acompanhado da respectiva Nota Fiscal de compra do produto.</p> <p>O QUE NÃO É COBERTO PELA GARANTIA Instalação e remoção do produto, despesas de frete, seguro e embalagem são de responsabilidade do proprietário.</p> <p>JVC KENWOOD DO BRASIL COMERCIO DE ELECTRONICOS LTDA. Tel: 0800-7717270 www.kenwood.com.br</p> |

| CANADA | KENWOOD ELECTRONICS CANADA INC. |
|--|--|
| <p>KENWOOD WARRANTY KENWOOD ELECTRONICS CANADA INC. (hereinafter called "KENWOOD"), gives the following written warranty to the original customer of each new Kenwood product distributed in Canada by KENWOOD and purchased from a dealer authorized by KENWOOD.</p> <p>KENWOOD warrants that each new Kenwood product, under normal use, is free from any defects, subject to the terms and conditions set forth below. If a defect should occur within the warranty period, repairs will be made free of charge for parts and labour when such defects are determined by KENWOOD or its' authorized service centres to be attributable to faulty materials or workmanship at time of manufacture. Please contact KENWOOD to confirm if a dealer or service centre is authorized by KENWOOD.</p> <p>WARRANTY PERIOD This Kenwood product is warranted for parts and labour for a period of one (1) year from the date of original purchase, lease or rental, except for products which are used in a professional or commercial application, which are warranted for a period of ninety (90) days for parts and labour and are subject to the terms and conditions of the warranty.</p> <p>WARRANTY EXCLUSIONS This warranty excludes:</p> <ol style="list-style-type: none"> Products purchased in a foreign country or purchased in Canada and taken to a foreign country. Products purchased from a dealer not authorized by KENWOOD. Products with the serial number defaced, altered or missing. Periodic check-ups which do not disclose any defects covered by this warranty. | <p>(e) Defects resulting from disaster, accident, abuse, misuse, lightning, power surges, neglect or lack of periodic maintenance, unauthorized modification or failure to follow instructions in the owner's manual.</p> <p>(f) Defects or damage as a result of repairs performed by a person or party not authorized by KENWOOD.</p> <p>(g) Defects resulting from the use of parts or devices that do not conform to KENWOOD specifications.</p> <p>(h) Damage or deterioration occurring to any exterior finishes, cosmetic parts, tape heads, adaptors, antennas, cables, tapes, discs or faults or damage caused by defective or leaking batteries.</p> <p>(i) Defects or damage occurring during shipping (claims should be presented to the shipping company).</p> <p>(j) Product voltage and /or line frequency conversions.</p> <p>(k) Product installation or removal charges.</p> <p>TO OBTAIN WARRANTY SERVICE Should your Kenwood product require warranty service, deliver it to any authorized KENWOOD service centre and present the original copy of your bill of sale and this warranty card as proof of warranty, or send your product fully insured and freight prepaid to the nearest authorized KENWOOD service centre. To avoid possible shipping damage, make sure the product is properly packed. Include a copy of your original bill of sale and this warranty card as proof of warranty along with your name, home and /or work telephone number(s), a complete return address and a detailed description of the fault(s). Products repaired within warranty will be returned freight prepaid to destinations within Canada. The customer is responsible for all freight and related costs for the return of product(s) to destinations outside Canada.</p> <p>ENTIRE WARRANTY This warranty constitutes the entire written warranty given by KENWOOD. No person, party, dealer or service centre or their agents or employees are authorized to extend or enlarge this warranty on behalf of KENWOOD by any written or verbal statement or advertisement or promotion, including any extended warranty program or plan that may be offered by the dealer or service centre, unless approved in writing by KENWOOD.</p> <p>DISCLAIMER KENWOOD disclaims any responsibility for loss of time or use of the product or any other indirect, incidental or consequential damage to other products or goods, inconvenience or commercial loss.</p> <p>NOTICE TO CONSUMER The provisions contained in this written warranty are not intended to limit, modify, take away, disclaim or exclude any warranties or rights you may have which are set forth in any applicable provincial or federal laws or legislation.</p> <p>IMPORTANT This warranty card by itself is not considered by KENWOOD as a valid proof of purchase. When applying for warranty repairs, you must present the original copy of your bill of sale and this warranty card as proof of warranty, so we recommend that they be kept in a safe place, should they be required in the future.</p> <p>KENWOOD ELECTRONICS CANADA INC. 6070 Kestrel Road, Mississauga, Ontario, Canada L5T 1S8 Tel.: (905) 670-7211 Fax: (905) 670-7248</p> |
| <p>GARANTIE KENWOOD KENWOOD ELECTRONICS CANADA INC. (ci-après appelée "KENWOOD"), donne par écrit la garantie suivante à l'acheteur original de chaque nouveau produit Kenwood distribué au Canada par KENWOOD et acheté à un concessionnaire autorisé par KENWOOD.</p> <p>KENWOOD garantit, sous réserve des termes et des conditions énoncés ci-dessous, que chaque nouveau produit Kenwood, dans des conditions d'emploi normales, est exempt de tous défauts. Si l'un défaut se produit pendant la période de garantie, KENWOOD s'engage à assumer le coût des pièces défectueuses et de la main-d'œuvre nécessaires pour effectuer les réparations pourvu que de tels défauts sont attribuables à des pièces défectueuses employées lors de la fabrication du produit Kenwood ou à la main-d'œuvre tel qu'établi par KENWOOD ou par l'un de ses centres de service autorisés. Appelez KENWOOD pour vérifier si un concessionnaire ou un centre de service est autorisé par KENWOOD.</p> <p>PÉRIODE DE GARANTIE Les pièces et la main-d'œuvre nécessaires pour la réparation des produits Kenwood sont garanties pendant la période d'un (1) an à compter de la date d'achat, de bail ou de location originale, sauf dans les cas où les produits Kenwood sont employés dans un but professionnel ou commercial, où la garantie des pièces et de la main-d'œuvre demeure en vigueur pendant une période de quatre-vingt-dix (90) jours sous réserve des termes et des conditions de la garantie.</p> <p>EXCLUSIONS DE GARANTIE Cette garantie ne couvre pas:</p> <ol style="list-style-type: none"> les produits achetés à l'étranger ou achetés au Canada et transportés à l'étranger; les produits achetés à un concessionnaire non autorisé par KENWOOD; les produits dont le numéro de série manque, a été effacé ou modifié; les services d'entretien périodiques qui n'indiquent aucun défaut couvert par cette garantie; | <p>(e) les défauts causés par les désastres, les accidents, les abus, les emplois incorrects, les éclaircs, les surtensions de courant, les manques de soins ou d'entretiens périodiques, les modifications non autorisées ou les manques de respect du mode d'emploi;</p> <p>(f) les défauts ou les dommages causés lors de réparations effectuées par une personne ou par une partie non autorisée par KENWOOD;</p> <p>(g) les défauts causés par l'emploi de pièces ou de dispositifs qui ne se conforment pas aux exigences de KENWOOD;</p> <p>(h) les finitions extérieures, les pièces cosmétiques, les fêles de bandes, les adaptateurs, les antennes, les câbles, les bandes, les disques endommagés ou débris, ni les défauts ou dommages causés par des piles défectueuses ou qui tuent;</p> <p>(i) les défauts ou dommages qui se produisent pendant l'expédition des produits Kenwood (On devrait déposer de telles réclamations auprès des compagnies de transport);</p> <p>(j) les conversions de tension et/ou de fréquence du produit;</p> <p>(k) les frais d'installation ou d'enlèvement du produit.</p> <p>COMMENT OBTENIR DU SERVICE SOUS GARANTIE Au cas où un service sous garantie de votre produit Kenwood s'avère nécessaire, veuillez livrer le produit à n'importe quel centre de service KENWOOD et présenter la copie originale du contrat de vente et cette carte de garantie en tant que preuve de garantie ou veuillez faire parvenir votre produit assuré et port payé au centre de service KENWOOD autorisé le plus proche. Pour éviter toutes possibilités de dommages pendant le transport, veuillez bien emballer le produit. Veuillez inclure une copie du contrat de vente original et cette carte de garantie en tant que preuve de garantie aussi bien que votre nom, numéros de téléphone au poste de travail et/ou au domicile, votre adresse et une description détaillée des défauts. Les produits sous garantie réparés seront retournés port payé aux destinations à l'intérieur du Canada. Le consommateur sera responsable de tous frais de transport et d'autres frais qui s'y rapportent pour faire expédier les produits à destinations à l'extérieur du Canada.</p> <p>L'ENTIÈRE GARANTIE Cette garantie représente l'entière garantie donnée par écrit par KENWOOD. KENWOOD ne se tient aucunement responsable de toutes extensions ni de toutes augmentations de cette garantie faites ou entreprises par toutes personnes, parties, concessionnaires ou centres de service ou par leurs agents ou employés au nom de KENWOOD au moyen d'affirmations verbales ou écrites, d'annonces ou de promotions, y inclus tous programmes ou plans de garantie étendue que puissent offrir les concessionnaires ou les centres de service, à moins que KENWOOD n'y ait consenti par écrit d'avance.</p> <p>RENONCIATION KENWOOD renonce à toutes responsabilités de perte de temps, d'emploi du produit, de tous dommages indirects ou accessoires causés à d'autres produits ou biens, de tous inconvénients ou de toutes pertes commerciales.</p> <p>AVIS AUX CONSOMMATEURS Les stipulations contenues dans la présente garantie écrite n'ont pas pour but de limiter, de modifier, de diminuer, de rejeter ni d'exclure d'autres garanties ni droits énoncés dans n'importe quelles lois ou législations provinciales ou fédérales.</p> <p>IMPORTANT KENWOOD ne considère pas cette garantie toute seule comme étant une preuve d'achat valide. Lorsqu'on demande du service sous garantie, il faudra présenter la copie originale du contrat de vente aussi bien que cette carte de garantie en tant que preuve de garantie. On recommande de les conserver dans un lieu sûr au cas où elles s'avèreraient nécessaires à l'avenir.</p> <p>KENWOOD ELECTRONICS CANADA INC. 6070 Kestrel Road, Mississauga, Ontario, Canada L5T 1S8 Téléphone: (905) 670-7211 Télécopieur: (905) 670-7248</p> |

Free Manuals Download Website

<http://myh66.com>

<http://usermanuals.us>

<http://www.somanuals.com>

<http://www.4manuals.cc>

<http://www.manual-lib.com>

<http://www.404manual.com>

<http://www.luxmanual.com>

<http://aubethermostatmanual.com>

Golf course search by state

<http://golfingnear.com>

Email search by domain

<http://emailbydomain.com>

Auto manuals search

<http://auto.somanuals.com>

TV manuals search

<http://tv.somanuals.com>