

# KENWOOD

## KMM-BT312U KMR-M312BT

---

DIGITAL MEDIA RECEIVER

### INSTRUCTION MANUAL

RÉCEPTEUR MULTIMÉDIA NUMÉRIQUE

### MODE D'EMPLOI

RECEPTOR DE MEDIOS DIGITALES

### MANUAL DE INSTRUCCIONES

JVCKENWOOD Corporation

**Take the time to read through this instruction manual.**

**Familiarity with installation and operation procedures will help you obtain the best performance from your new Digital Media Receiver.**

#### **For your records**

Record the serial number, found on the back of the unit, in the spaces designated on the warranty card, and in the space provided below. Refer to the model and serial numbers whenever you call upon your Kenwood dealer for information or service on the product.

Model KMM-BT312U/ KMR-M312BT

Serial number \_\_\_\_\_

*US Residents Only*

**Register Online**

#### FCC WARNING

This equipment may generate or use radio frequency energy. Changes or modifications to this equipment may cause harmful interference unless the modifications are expressly approved in the instruction manual. The user could lose the authority to operate this equipment if an unauthorized change or modification is made.

#### FCC NOTE

This equipment has been tested and found to comply with the limits for a Class B digital device, pursuant to Part 15 of the FCC Rules. These limits are designed to provide reasonable protection against harmful interference in a residential installation. This equipment may cause harmful interference to radio communications, if it is not installed and used in accordance with the instructions. However, there is no guarantee that interference will not occur in a particular installation. If this equipment does cause harmful interference to radio or television reception, which can be determined by turning the equipment off and on, the user is encouraged to try to correct the interference by one or more of the following measures:

- Reorient or relocate the receiving antenna.
- Increase the separation between the equipment and receiver.
- Connect the equipment into an outlet on a circuit different from that to which the receiver is connected.
- Consult the dealer or an experienced radio/TV technician for help.

#### Información acerca de la eliminación de equipos eléctricos y electrónicos al final de la vida útil (aplicable a los países que hayan adoptado sistemas independientes de recogida de residuos)



Los productos con el símbolo de un contenedor con ruedas tachado no podrán ser desechados como residuos domésticos. Los equipos eléctricos y electrónicos al final de la vida útil, deberán ser reciclados en instalaciones que puedan dar el tratamiento adecuado a estos productos y a sus subproductos residuales correspondientes. Póngase en contacto con su administración local para obtener información sobre el punto de recogida más cercano. Un tratamiento correcto del reciclaje y la eliminación de residuos ayuda a conservar los recursos y evita al mismo tiempo efectos perjudiciales en la salud y el medio ambiente.

#### CALIFORNIA, USA ONLY

This product contains a CR Coin Cell Lithium Battery which contains Perchlorate Material—special handling may apply. See [www.dtsc.ca.gov/hazardouswaste/perchlorate](http://www.dtsc.ca.gov/hazardouswaste/perchlorate)

#### Informação sobre a eliminação de pilhas

Este produto não deve ser eliminado como lixo doméstico geral. Devolva a pilha usada ao revendedor ou entidade autorizada para que a mesma seja devolvida ao fabricante ou importador.

A reciclagem e a eliminação de lixo de maneira apropriada ajudarão a conservar os recursos naturais ao mesmo tempo que prevenirão os efeitos prejudiciais à nossa saúde e ao meio ambiente.

#### libFLAC

Copyright (C) 2000,2001,2002,2003,2004,2005,2006,2007,2008,2009 Josh Coalson  
Redistribution and use in source and binary forms, with or without modification, are permitted provided that the following conditions are met:

- Redistributions of source code must retain the above copyright notice, this list of conditions and the following disclaimer.
- Redistributions in binary form must reproduce the above copyright notice, this list of conditions and the following disclaimer in the documentation and/or other materials provided with the distribution.
- Neither the name of the Xiph.org Foundation nor the names of its contributors may be used to endorse or promote products derived from this software without specific prior written permission.

THIS SOFTWARE IS PROVIDED BY THE COPYRIGHT HOLDERS AND CONTRIBUTORS "AS IS" AND ANY EXPRESS OR IMPLIED WARRANTIES, INCLUDING, BUT NOT LIMITED TO, THE IMPLIED WARRANTIES OF MERCHANTABILITY AND FITNESS FOR A PARTICULAR PURPOSE ARE DISCLAIMED. IN NO EVENT SHALL THE FOUNDATION OR CONTRIBUTORS BE LIABLE FOR ANY DIRECT, INDIRECT, INCIDENTAL, SPECIAL, EXEMPLARY, OR CONSEQUENTIAL DAMAGES (INCLUDING, BUT NOT LIMITED TO, PROCUREMENT OF SUBSTITUTE GOODS OR SERVICES; LOSS OF USE, DATA, OR PROFITS; OR BUSINESS INTERRUPTION) HOWEVER CAUSED AND ON ANY THEORY OF LIABILITY, WHETHER IN CONTRACT, STRICT LIABILITY, OR TORT (INCLUDING NEGLIGENCE OR OTHERWISE) ARISING IN ANY WAY OUT OF THE USE OF THIS SOFTWARE, EVEN IF ADVISED OF THE POSSIBILITY OF SUCH DAMAGE.

**IC (Industry Canada) Notice**

This device complies with Industry Canada licence-exempt RSS standard(s).

Operation is subject to the following two conditions:

- (1) This device may not cause interference, and
- (2) this device must accept any interference, including interference that may cause undesired operation of the device.

The term "IC:" before the certification/ registration number only signifies that the Industry Canada technical specification were met.

**Note de IC (Industrie Canada)**

Le présent appareil est conforme aux CNR d'Industrie Canada applicables aux appareils radio exempts de licence.

L'exploitation est autorisée aux deux conditions suivantes:

- (1) l'appareil ne doit pas produire de brouillage, et
- (2) l'utilisateur de l'appareil doit accepter tout brouillage radioélectrique subi, même si le brouillage est susceptible d'en compromettre le fonctionnement.

L'expression "IC:" avant le numéro d'homologation/ enregistrement signifie seulement que les spécifications techniques d'Industrie Canada ont été respectées.

**Para cumplimiento de la COFETEL:**

"La operación de este equipo está sujeta a las siguientes dos condiciones:

- (1) es posible que este equipo o dispositivo no cause interferencia perjudicial y
- (2) este equipo o dispositivo debe aceptar cualquier interferencia, incluyendo la que pueda causar su operación no deseada"

Contains Bluetooth Module

FCC ID: ZWYMC55

Contains Bluetooth Module

IC: 12033A-MC55

**CAUTION**

This equipment complies with FCC/IC radiation exposure limits set forth for an uncontrolled environment and meets the FCC radio frequency (RF) Exposure Guidelines in Supplement C to OET65 and RSS-102 of the IC radio frequency (RF) Exposure rules. This equipment has very low levels of RF energy that it deemed to comply without maximum permissive exposure evaluation (MPE). But it is desirable that it should be installed and operated keeping the radiator at least 20cm or more away from person's body (excluding extremities: hands, wrists, feet and ankles).

Under Industry Canada regulations, this radio transmitter may only operate using an antenna of a type and maximum (or lesser) gain approved for the transmitter by Industry Canada. To reduce potential radio interference to other users, the antenna type and its gain should be so chosen that the equivalent isotropically radiated power (e.i.r.p.) is not more than that necessary for successful communication.

**ATTENTION**

Cet équipement est conforme aux limites d'exposition aux rayonnements énoncées pour un environnement non contrôlé et respecte les règles d'exposition aux fréquences radioélectriques (RF) CNR-102 de l'IC. Cet équipement émet une énergie RF très faible qui est considérée conforme sans évaluation de l'exposition maximale autorisée. Cependant, cet équipement doit être installé et utilisé en gardant une distance de 20 cm ou plus entre le dispositif rayonnant et le corps (à l'exception des extrémités : mains, poignets, pieds et chevilles).

Conformément à la réglementation d'Industrie Canada, le présent émetteur radio peut fonctionner avec une antenne d'un type et d'un gain maximal (ou inférieur) approuvé pour l'émetteur par Industrie Canada. Dans le but de réduire les risques de brouillage radioélectrique à l'intention des autres utilisateurs, il faut choisir le type d'antenne et son gain de sorte que la puissance isotrope rayonnée équivalente (p.i.r.e.) ne dépasse pas l'intensité nécessaire à l'établissement d'une communication satisfaisante.

# CONTENTS

BEFORE USE	2
BASICS	3
GETTING STARTED	4
RADIO	5
USB / iPod / ANDROID	7
Pandora®	9
iHeartRadio®	10
SiriusXM® Radio	11
AUX	13
BLUETOOTH®	14
AUDIO SETTINGS	20
DISPLAY SETTINGS	21
MORE INFORMATION	21
TROUBLESHOOTING	22
SPECIFICATIONS	25
INSTALLATION / CONNECTION	26

## How to read this manual

- Operations are explained mainly using buttons on the faceplate.
- [XX] indicates the selected items.
- (→ XX) indicates references are available on the stated page.

# BEFORE USE

## ▲ Warning

Do not operate any function that takes your attention away from safe driving.

## ▲ Caution

### Volume setting:

- Adjust the volume so that you can hear sounds outside the car to prevent accidents.
- Lower the volume before playing digital sources to avoid damaging the speakers by the sudden increase of the output level.

### General:

- Avoid using the external device if it might hinder safe driving.
- Make sure all important data has been backed up. We shall bear no responsibility for any loss of recorded data.
- Never put or leave any metallic objects (such as coins or metal tools) inside the unit, to prevent a short circuit.

### Remote control (RC-406):

- Do not leave the remote control in hot places such as on the dashboard.
- The Lithium battery is in danger of explosion if replaced incorrectly. Replace it only with the same or equivalent type.
- The battery pack or batteries shall not be exposed to excessive heat such as sunshine, fire or the like.
- Keep the battery out of reach of children and in its original packaging when not in used. Dispose of used batteries promptly. If swallowed, contact a physician immediately.

## Maintenance

**Cleaning the unit:** Wipe off dirt on the faceplate with a dry silicone or soft cloth.

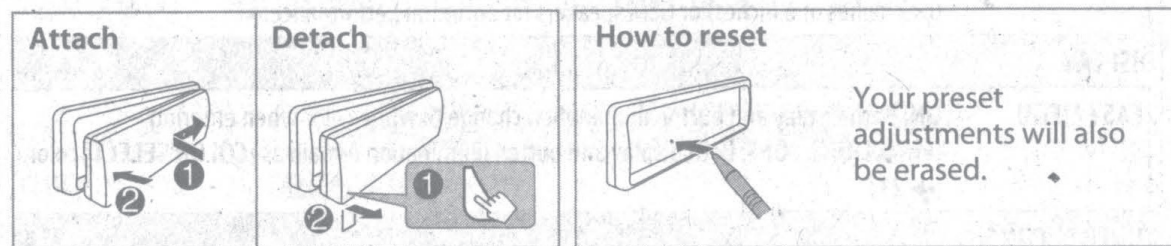
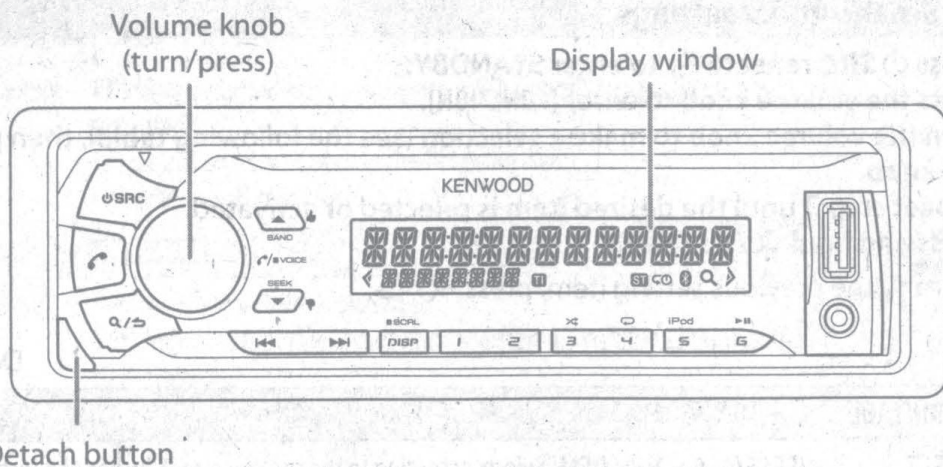
**Cleaning the connector:** Detach the faceplate and clean the connector gently with a cotton swab, being careful not to damage the connector.



Connector (on the reverse side of the faceplate)

# BASICS

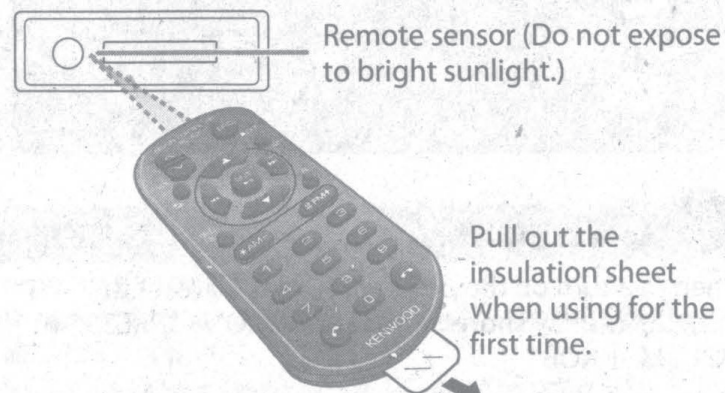
## Faceplate



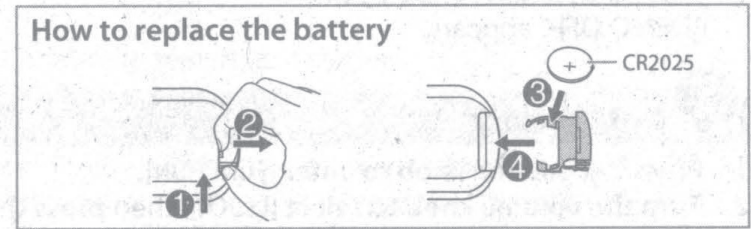
To	On the faceplate	On the remote control
Turn on the power	Press <b>SRC</b> . • Press and hold to turn off the power.*	Press and hold <b>SRC</b> to turn off the power. ( Pressing <b>SRC</b> does not turn on the power. )
Adjust the volume	Turn the volume knob.	Press <b>VOL</b> $\wedge$ or <b>VOL</b> $\vee$ .
Select a source	Press <b>SRC</b> repeatedly.	Press <b>ATT</b> during playback to attenuate the sound. • Press again to cancel. Press <b>SRC</b> repeatedly.
Change the display information	Press <b>DISP SCRL</b> repeatedly. • Press and hold to scroll the current display information.	( not available )

\* For **KMR-M312BT** : The power will automatically turn off after 20 minutes when in standby mode (Auto Power Off).

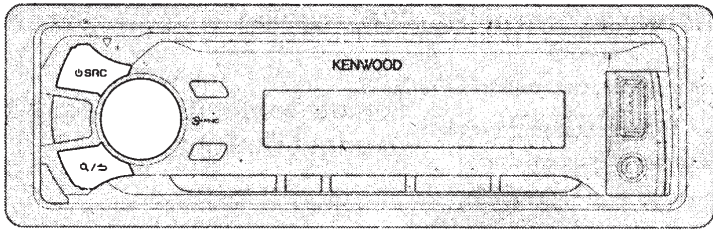
## Remote control (RC-406) (supplied for **KMM-BT312U**)



Remote control functions are not available for **KMR-M312BT**.



# GETTING STARTED



## 1 Cancel the demonstration (for **KMM-BT312U**)

When you turn on the power (or after you reset the unit), the display shows: "CANCEL DEMO" → "PRESS" → "VOLUME KNOB"

- 1 Press the volume knob.  
[YES] is selected for the initial setup.
- 2 Press the volume knob again.  
"DEMO OFF" appears.

## 2 Set the clock

- 1 Press the volume knob to enter [FUNCTION].
- 2 Turn the volume knob to select [CLOCK], then press the knob.
- 3 Turn the volume knob to select [CLOCK ADJUST], then press the knob.
- 4 Turn the volume knob to make the settings, then press the knob.  
Day → Hour → Minute
- 5 Turn the volume knob to select [CLOCK FORMAT], then press the knob.
- 6 Turn the volume knob to select [12H] or [24H], then press the knob.
- 7 Press and hold **Q/↵** to exit.

To return to the previous setting item, press **Q/↵**.

## 3 Set the initial settings

- 1 Press **⏻ SRC** repeatedly to enter STANDBY.
- 2 Press the volume knob to enter [FUNCTION].
- 3 Turn the volume knob to make a selection (see the following table), then press the knob.
- 4 Repeat step 3 until the desired item is selected or activated.
- 5 Press and hold **Q/↵** to exit.

To return to the previous setting item, press **Q/↵**.

Default: **XX**

### AUDIO CONTROL

**SP SELECT**     **OFF/ 5/4/ 6 × 9/6/ OEM:** Selects according to the speaker size (5 inches or 4 inches, 6×9 inches or 6 inches) or OEM speakers for optimum performance.

### DISPLAY

**EASY MENU**     **ON:** Both display and button illumination change to white color when entering [FUNCTION]. ; **OFF:** Both display and button illumination remain as [COLOR SELECT] color. (→ 21)

### TUNER SETTING

**PRESET TYPE**     **NORMAL:** Memorizes one station for each preset button in each band (FM1/ FM2/ FM3/ AM). ; **MIX:** Memorizes one station or SiriusXM channel for each preset button, regardless of the selected band or SiriusXM channel.

### SYSTEM

**KEY BEEP**     **ON:** Activates the keypress tone. ; **OFF:** Deactivates.

### SOURCE SELECT

**PANDORA SRC**     **ON:** Enables PANDORA in source selection. ; **OFF:** Disables. (→ 9)

**IHEART SRC**     **ON:** Enables IHEARTRADIO in source selection. ; **OFF:** Disables. (→ 10)

**BUILT-IN AUX**     **ON:** Enables AUX in source selection. ; **OFF:** Disables. (→ 13)

## GETTING STARTED

### F/W UPDATE

#### UPDATE SYSTEM / UPDATE BT

**F/W UP xx.xx** **YES:** Starts upgrading the firmware. ; **NO:** Cancels (upgrading is not activated).  
For details on how to update the firmware, see:  
[www.kenwood.com/cs/ce/](http://www.kenwood.com/cs/ce/)

### REM SETTING\* (for **KMR-M312BT**)

**REMOTE ID SET** Remote control ID list is displayed.  
**YES:** Indicates that this ID is already registered. ; **NO:** Indicates that this ID is available.  
Turn the volume knob to select an available ID (**REM ID1/ ID2/ ID3**), then press the knob to register.

**REMOTE ID DEL** **REM ID1 DELETE/ ID2 DELETE/ ID3 DELETE:** Selects the registered remote control ID to delete.  
**YES:** Deletes the selected remote control ID. ; **NO:** Cancels.

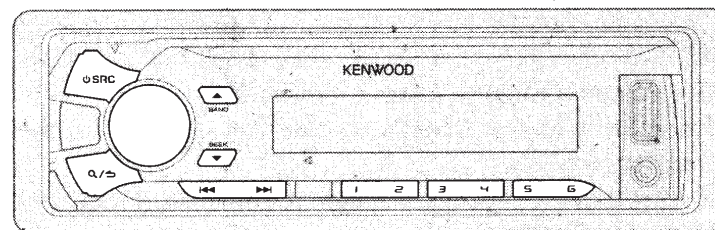
### CLOCK

**CLOCK DISPLAY** (For **KMM-BT312U**)  
**ON:** The clock time is shown on the display even when the unit is turned off. ; **OFF:** Cancels.

**DATE SET\*2** (For **KMR-M312BT**)  
**DD/MM/YY:** Sets the date for marine remote control display.

\* Displayed only when KCA-RC55MR (optional accessory) is connected. (→ 29)

## RADIO



### Search for a station

- 1 Press **SRC** repeatedly to select **TUNER**.
  - 2 Press **▲ BAND** repeatedly (or press **#FM+ / \*AM-** on RC-406) to select **FM1/ FM2/ FM3/ AM**.
  - 3 Press **◀◀ / ▶▶** (or press **◀◀ / ▶▶ (+)** on RC-406) to search for a station.
- To change the searching method for **◀◀ / ▶▶**: Press **▼ SEEK** repeatedly.
    - AUTO1** : Automatically search for a station.
    - AUTO2** : Search for a preset station.
    - MANUAL** : Manually search for a station.
  - To store a station: Press and hold one of the number buttons (**1 to 6**).
  - To select a stored station: Press one of the number buttons (**1 to 6**) (or press one of the number buttons (**1 to 6**) on RC-406).

### Direct Access Tuning (using RC-406) (for **KMM-BT312U**)

- 1 Press **DIRECT** to enter Direct Access Tuning.
  - 2 Press the number buttons to enter a frequency.
  - 3 Press **ENT ▶ II** to search for a station.
- To cancel, press **↶** or **DIRECT**.
  - If no operation is done for 10 seconds after step 2, Direct Access Tuning is automatically canceled.

# RADIO

## Other settings

- 1 Press the volume knob to enter [FUNCTION].
- 2 Turn the volume knob to make a selection (see the following table), then press the knob.
- 3 Repeat step 2 until the desired item is selected or activated.
- 4 Press and hold **Q/↵** to exit.

To return to the previous setting item, press **Q/↵**.

Default: **XX**

## TUNER SETTING

<b>AUTO MEMORY</b>	<b>YES:</b> Automatically starts memorizing 6 stations with good reception. ; <b>NO:</b> Cancels. • Selectable only if [NORMAL] is selected for [PRESET TYPE]. (→ 4)
<b>MONO SET</b>	<b>ON:</b> Improves the FM reception, but the stereo effect may be lost. ; <b>OFF:</b> Cancels.
<b>TI</b>	<b>ON:</b> Allows the unit to temporarily switch to Traffic Information if available ("TI" lights up). ; <b>OFF:</b> Cancels.
<b>PTY SEARCH</b>	Selects the available Program Type (see the following), then, press <b>◀◀/▶▶</b> to start.

## CLOCK

<b>TIME SYNC</b>	<b>ON:</b> Synchronizes the unit's time to the Radio Broadcast Data System station time. ; <b>OFF:</b> Cancels.
------------------	---

- [MONO SET]/ [TI]/ [PTY SEARCH] is selectable only when the band is FM1/ FM2/ FM3.
- Available Program Type:  
**SPEECH :** NEWS, INFORM (information), SPORTS, TALK, LANGUAGE, REL TALK (religious talk), PERSNLTY (personality), PUBLIC, COLLEGE, HABL ESP (spanish talk), WEATHER  
**MUSIC :** ROCK, CLS ROCK (classic rock), ADLT HIT (adult hits), SOFT RCK (softrock), TOP 40, COUNTRY, OLDIES, SOFT, NOSTALGA (nostalgia), JAZZ, CLASSICL (classical), R & B (rhythm and blues), SOFT R&B (soft rhythm and blues), REL MUSC (religious music), MUSC ESP (spanish music), HIP HOP

The unit will search for the Program Type categorized under [SPEECH] or [MUSIC] if selected.

- If the volume is adjusted during reception of traffic information or news bulletin, the adjusted volume is memorized automatically. It will be applied the next time traffic information or news bulletin is turned on.

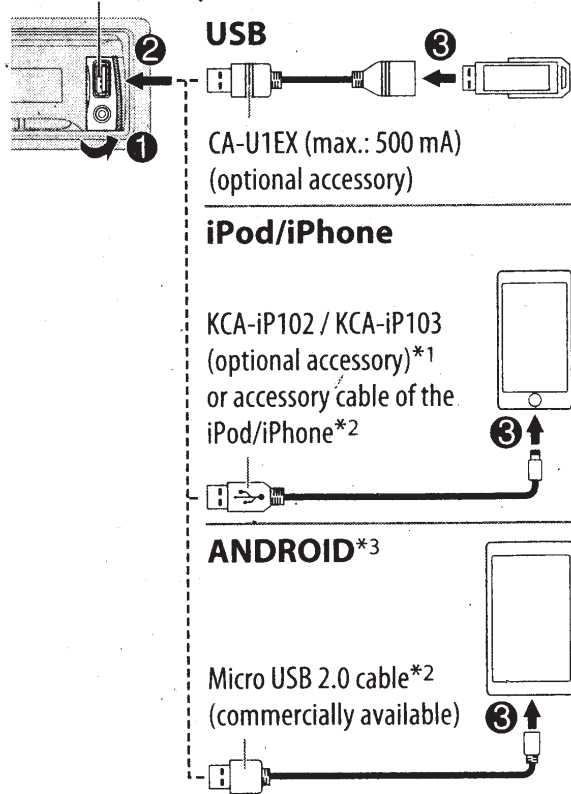


# USB / iPod / ANDROID

## Start playback

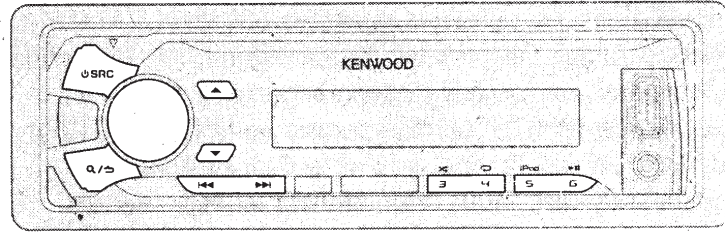
The source changes automatically and playback starts.

USB input terminal



\*1 KCA-iP102 : 30-pin type, KCA-iP103 : Lightning type

\*2 Do not leave the cable inside the car when not using.



To	On the faceplate	On the remote control
Playback / pause	Press <b>6</b> ►  .	Press <b>ENT</b> ►  .
Reverse / Fast-forward*4	Press and hold ◀◀ / ▶▶.	Press and hold ◀◀ / ▶▶ (+).
Select a file	Press ◀◀ / ▶▶.	Press ◀◀ / ▶▶ (+).
Select a folder*5	Press ▲ / ▼.	Press <b>#FM+</b> / <b>*AM-</b> .
Repeat play*6	Press <b>4</b> ↺ repeatedly. FILE REPEAT/ FOLDER REPEAT/ REPEAT OFF : MP3/WMA/AAC/WAV/FLAC file, iPod or ANDROID FILE REPEAT/ REPEAT OFF : KME Light/ KMC file*7	
Random play*6	Press <b>3</b> ↻ repeatedly. FOLDER RANDOM/ RANDOM OFF : MP3/WMA/AAC/WAV/FLAC file, KME Light/ KMC file, iPod or ANDROID Press and hold <b>3</b> ↻ to select ALL RANDOM.	
Select control mode	While in iPod source, press <b>5 iPod</b> repeatedly. MODE ON : Control from the iPod*8 MODE OFF : Control from the unit While in ANDROID source, (→ 8, [ANDROID SETUP])	
Select music drive (→ 8, [MUSIC DRIVE])	Press <b>5 iPod</b> repeatedly. The stored songs in the following start playback. <ul style="list-style-type: none"> <li>Selected internal or external memory of a smartphone (Mass Storage Class).</li> <li>Selected drive of a multiple drives device.</li> </ul>	

## USB / iPod / ANDROID

- \*3 When connecting an Android device, "Press [VIEW] to install KENWOOD MUSIC PLAY APP" is shown. Follow the instructions to install the application. You can also install the latest version of KENWOOD MUSIC PLAY application on your Android device before connecting. (➔ 21)
- \*4 For ANDROID: Applicable only when [BROWSE MODE] is selected. (➔ [ANDROID SETUP])
- \*5 Only for MP3/WMA/AAC/WAV/FLAC files. This does not work for iPod/ ANDROID.
- \*6 For iPod/ ANDROID: Applicable only when [MODE OFF]/ [BROWSE MODE] is selected.
- \*7 KME Light : KENWOOD Music Editor Light, KMC : KENWOOD Music Control (➔ 21)
- \*8 You can still play/pause, file skip, fast-forward or reverse files from the unit.

### Select a file from a folder/list

- 1 Press **Q/↵**.
- 2 Turn the volume knob to select a folder/list, then press the knob.
- 3 Turn the volume knob to select a file, then press the knob.

#### Quick Search

If you have many files, you can search through them quickly.

#### For USB (for KME Light/ KMC files):

Press **◀◀ / ▶▶** to search at a preset skip search ratio. (➔ [SKIP SEARCH])

Press and hold **◀◀ / ▶▶** to search at a 10% ratio.

- Not applicable MP3/WMA/AAC/WAV/FLAC files.

#### For iPod:

You can search for a file according to the first character.

- 1 Turn the volume knob quickly to enter character search.
- 2 Turn the volume knob to select the character.  
To search for a character other than A to Z and 0 to 9, enter only "\*".
- 3 Press **◀◀ / ▶▶** to move to the entry position.
  - You can enter up to 3 characters.
- 4 Press the volume knob to start searching.

- To return to the root folder/ first file/ top menu, press **5 iPod**.
- To return to the previous setting item, press **Q/↵**.
- To cancel, press and hold **Q/↵**.
- For iPod, applicable only when [MODE OFF] is selected. (➔ 7)
- For ANDROID, applicable only when [BROWSE MODE] is selected. (➔ [ANDROID SETUP])

### Direct Music Search (using RC-406) (for KMM-BT312U)

- 1 Press **DIRECT**.
  - 2 Press the number buttons to enter a file number.
  - 3 Press **ENT ▶ ||** to search for music.
- To cancel, press **↵** or **DIRECT**.
  - Not available if Random Play is selected.
  - Not applicable for iPod, ANDROID, KME Light/ KMC file.

### Listen to Tuneln Radio/ Tuneln Radio Pro/ Aupeo

While listening to Tuneln Radio, Tuneln Radio Pro or Aupeo, connect the iPod/iPhone to the USB input terminal of the unit.

- The unit will output the sound from these applications.

### Other settings

- 1 Press the volume knob to enter [FUNCTION].
- 2 Turn the volume knob to make a selection (see the following table), then press the knob.
- 3 Repeat step 2 until the desired item is selected or activated.
- 4 Press and hold **Q/↵** to exit.

To return to the previous setting item, press **Q/↵**.

Default: **XX**

### ANDROID SETUP

**BROWSE MODE:** Control from the unit (using KENWOOD MUSIC PLAY application). ;

**HAND MODE:** Control other media player applications from the Android device (without using KENWOOD MUSIC PLAY application). However, you can still play/pause and file skip from the unit.

### USB

**MUSIC DRIVE DRIVE CHANGE:** The next drive ([DRIVE 1] to [DRIVE 5]) is selected automatically and playback starts.  
Repeat steps 1 to 3 to select the following drives.

**SKIP SEARCH 0.5%/ 1%/ 5%/ 10%:** While listening to iPod, ANDROID or KME Light/ KMC file, selects the skip search ratio over the total files.

# Pandora®

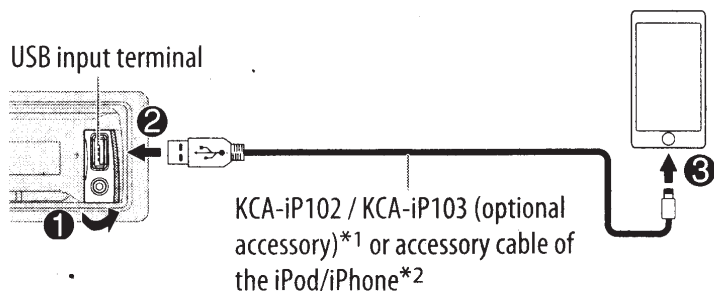
## Preparation:

Install the latest version of the Pandora application on your device (iPhone/ iPod touch), then create an account and log in to Pandora.

- Select [ON] for [PANDORA SRC]. (→ 4)

## Start listening

- 1 Open the Pandora application on your device.
- 2 Connect your device to the USB input terminal.



The source changes to PANDORA and broadcast starts.

To	On the faceplate	On the remote control
Playback / pause	Press <b>6</b> ►  .	Press <b>ENT</b> ►  .
Skip a track	Press ►► .	Press ►►  (+).
Thumbs up or thumbs down*3	Press ▲👍 / ▼👎.	Press <b>#FM+</b> / <b>*AM-</b> .

\*1 KCA-iP102 : 30-pin type, KCA-iP103 : Lightning type

\*2 Do not leave the cable inside the car when not using.

\*3 If thumbs down is selected, the current track is skipped.

## Create and save a new station

- 1 Press and hold the volume knob.
- 2 Turn the volume knob to select [FROM TRACK] or [FROM ARTIST], then press the knob.  
A new station is created based on the current song or artist.
- 3 Press and hold one of the number buttons (1 to 5) to store.

To select a stored station, press one of the number buttons (1 to 5).

## Search for a registered station

- 1 Press **Q/↵**.
- 2 Turn the volume knob to make a selection, then press the knob.  
[BY DATE]: According to the registered date  
[A-Z]: Alphabetical order
- 3 Turn the volume knob to the desired station, then press the knob.

To cancel, press and hold **Q/↵**.

(or using RC-406)

Press **▲/▼** to search for a station, then press **ENT** ►||.

## Bookmark a song or artist information

- 1 Press and hold **▲**.
- 2 Turn the volume knob to make a selection, then press the knob.  
[THIS TRACK]: Current song information  
[THIS ARTIST]: Current artist information  
"BOOKMARKED" appears and the information is stored to your device.  
The bookmark is available on your Pandora account but not on this unit.

# iHeartRadio®

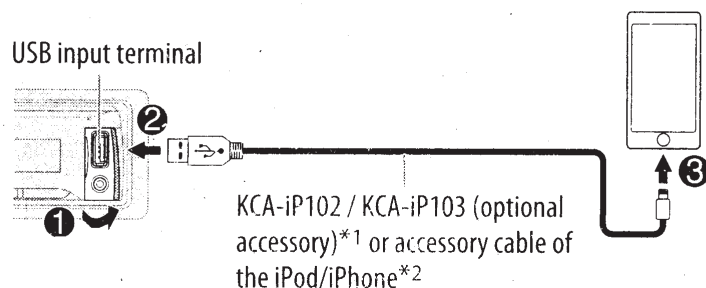
## Preparation:

Install the latest version of iHeart Link for KENWOOD application on your device (iPhone/ iPod touch), then create an account and log in to iHeartRadio.

- Select [ON] for [IHEART SRC]. (→ 4)

## Start listening

- 1 Open the iHeart Link application on your device.
- 2 Connect your device to the USB input terminal.



- 3 Press **⏻ SRC** repeatedly to select IHEARTRADIO. Broadcast starts automatically.<sup>1</sup>

To	On the faceplate	On the remote control
Playback / pause	Press <b>6 ▶ II.</b>	Press <b>ENT ▶ II.</b>
Skip a track for custom station	Press <b>▶▶ I.</b>	Press <b>▶▶ I (+).</b>
Thumbs up or thumbs down* <sup>3</sup> for custom station	Press <b>▲ ♪ / ▼ ♫.</b>	—
Create a new/custom station	Press <b>1.</b>	—
Add to favorite stations for live station	Press <b>2.</b>	—
Scan for live station	Press <b>5.</b>	—

\*1 KCA-iP102 : 30-pin type, KCA-iP103 : Lightning type

\*2 Do not leave the cable inside the car when not using.

\*3 If thumbs down is selected, the current track is skipped.

## Search for a station

- 1 Press **Q/↵.**
- 2 Turn the volume knob to select a category, then press the knob.
- 3 Turn the volume knob to the desired station, then press the knob.

When a city list appears, you can skip cities in alphabetical order.

To cancel, press and hold **Q/↵.**

(or using RC-406)

Press **▲/▼** to search for a station, then press **ENT ▶ II.**

## Skip cities by alphabetical order

While a city list appears during search...

- 1 Turn the volume knob quickly to enter character search.
- 2 Turn the volume knob or press **◀◀ / ▶▶** to select the character to be searched for.
- 3 Press **▲/▼** to move to the previous/next page.
- 4 Press the volume knob to start searching.

To cancel, press and hold **Q/↵.**

## Delete a station

While listening to IHEARTRADIO...

- 1 Press the volume knob to enter [FUNCTION].
- 2 Turn the volume knob to select [SYSTEM], then press the knob.
- 3 Turn the volume knob to select [STATION DEL], then press the knob.
- 4 Turn the volume knob to select [LIVE] or [CUSTOM], then press the knob.
- 5 Turn the volume knob to select the desired station to delete, then press the knob.
- 6 Turn the volume knob to select [YES], then press the knob.
- 7 Press and hold **Q/↵** to exit.

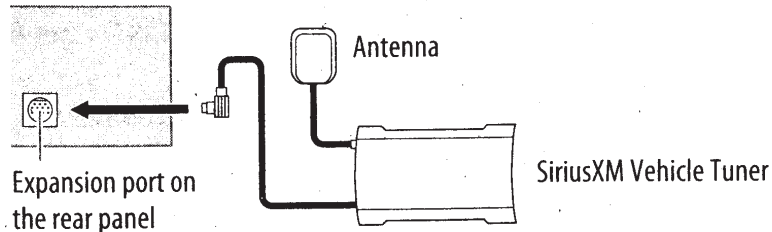
To return to the previous setting item, press **Q/↵.**

# SiriusXM® Radio

Only SiriusXM® brings you more of what you love to listen to, all in one place. Get over 140 channels, including commercial-free music plus the best sports, news, talk, comedy and entertainment. Welcome to the world of satellite radio. A SiriusXM Vehicle Tuner and Subscription are required. For more information, visit [www.siriusxm.com](http://www.siriusxm.com).

## Preparation:

- 1 Connect the optional SiriusXM Vehicle Tuner (commercially available).



- 2 Check your Radio ID for activation.

The SiriusXM Radio ID is required for activation and can be found by tuning to Channel 0 as well as on the label found on the SiriusXM Connect tuner and its' packaging.

The Radio ID does not include the letters I, O, S or F.

- 3 Activate the subscription.

For users in U.S.A.:

Online: Go to [www.siriusxm.com](http://www.siriusxm.com)

Phone: Call 1-866-635-2349

For users in Canada:

Online: Go to [www.siriusxm.ca/activatexm](http://www.siriusxm.ca/activatexm)

Phone: Call 1-877-438-9677

- 4 Press **SRC** repeatedly to select SIRIUS XM to start updating.

## Start listening

- 1 Press **SRC** repeatedly to select SIRIUS XM.
- 2 Press **BAND** repeatedly to select a band.
- 3 Press **Q / ↵**.  
"Q" lights up.
- 4 Turn the volume knob to select a category, then press the knob. If "ALL CHANNELS" is selected, all the available channels will be shown.
- 5 Turn the volume knob to select a channel, then press the knob.  
(or)  
Press **◀◀ / ▶▶** to search for a channel manually.
  - Pressing and holding **◀◀ / ▶▶** changes the channel rapidly.

If a locked channel or a mature channel is selected, a pass code input screen appears. Enter the pass code to receive the channel. (→ 13)

To change the tuning method for **◀◀ / ▶▶**: Press **▼ SEEK**. Each time you press **▼ SEEK**, the tuning method switches between "CHANNEL" (manually search for a channel) and "PRESET" (searches for a preset channel of the selected band).

## Direct Access Tuning (using RC-406) (for KMM-BT312U)

- 1 Press **DIRECT** to enter Direct Access Tuning.
- 2 Press the number buttons to enter a channel number.
- 3 Press **ENT ▶ II** to start searching.
  - To cancel, press **↵** or **DIRECT**.
  - If no operation is done for 10 seconds after step 2, Direct Access Tuning is automatically canceled.

## SiriusXM® Radio

### SiriusXM Keymode

Press and hold **▼ SEEK** to change the keymode (channel or replay).

(Default: Channel keymode)

"🔁" lights up when replay keymode is selected.

When channel keymode is selected...

To	On the faceplate	On the remote control
Select a channel	Press <b>◀▶</b> .	Press <b>◀▶ (+)</b> .
Change a channel rapidly	Press and hold <b>◀▶</b> .	Press and hold <b>◀▶ (+)</b> .
Store a channel of the current band	Press and hold one of the number buttons (1 to 6).	—
Select a stored channel of the current band	Press one of the number buttons (1 to 6).	—

When replay keymode is selected...

To	On the faceplate	On the remote control
Playback / pause	Press <b>6 ▶II</b> .	Press <b>ENT ▶II</b> .
Select a track	Press <b>◀▶</b> .	Press <b>◀▶ (+)</b> .
Rewind / Fast-forward	Press and hold <b>◀▶</b> .	Press and hold <b>◀▶ (+)</b> .
Go to Live	Press <b>1</b> .	—

### SmartFavorites and TuneStart™

User stored channels (1 to 6) of the current band are recognized as SmartFavorite channels. SiriusXM Vehicle Tuner automatically buffers the broadcast content in the background.

- SmartFavorites feature is available with SXV200 or later SiriusXM tuner models.

When you select a SmartFavorite channel, you can rewind and replay up to 30 minutes of any of the missed news, talk, sports or music content.

- Playback starts from the beginning of the song if [TUNE START] is set to [ON] for most music channels stored as SmartFavorite.

- 1 Press one of the number buttons (1 to 6) to select a channel.
- 2 For operation (→ SiriusXM Keymode)

### TuneScan™

You can get a short preview of the songs that you have missed on each of your SmartFavorite music channels or current tuned music channel.

Press and hold **▲ BAND** to start scanning the first 6 seconds of the recorded music contents.

- To listen to the current song, press the volume knob to stop scanning. The unit continues playing the current song.
- To select the previous/next song, press **◀▶**.
- To cancel scanning, press and hold the volume knob. Playback returns to the channel before you enter TuneScan.

### SiriusXM settings

- 1 Press the volume knob to enter [FUNCTION].
- 2 Turn the volume knob to select [SIRIUS XM], then press the knob.
- 3 Turn the volume knob to make a selection (→ 13), then press the knob.
- 4 Repeat step 3 until the desired item is selected/activated or follow the instructions stated on the selected item.
- 5 Press and hold **Q/↵** to exit.

To return to the previous setting item, press **Q/↵**.

## SiriusXM® Radio

<b>CHANNEL LOCK</b>	To unlock settings: <ol style="list-style-type: none"> <li>1 Turn the volume knob to select a number.</li> <li>2 Press <b>◀◀ / ▶▶</b> to move to the entry position.</li> <li>3 Repeat steps <b>1</b> and <b>2</b> to enter the current pass code. (Initial pass code is 0000.)</li> <li>4 Press the volume knob to confirm.</li> </ol>
<b>CODE SET</b>	<ol style="list-style-type: none"> <li>1 Turn the volume knob to select a number.</li> <li>2 Press <b>◀◀ / ▶▶</b> to move to the entry position.</li> <li>3 Repeat steps <b>1</b> and <b>2</b> to enter a new 4-digit pass code.</li> <li>4 Press the volume knob to confirm.</li> <li>5 Repeat steps <b>1</b> to <b>4</b> to reconfirm the pass code.</li> </ol> <ul style="list-style-type: none"> <li>• Make a note of the new pass code to enter channel lock settings from next time.</li> </ul>
<b>LOCK SETTING</b>	<b>MATURE CH:</b> Selects the SiriusXM-defined lock setting. ; <b>USER DEFINED:</b> Selects the user-defined lock setting. ; <b>OFF:</b> Cancels.
<b>CHANNEL EDIT*1</b>	<ol style="list-style-type: none"> <li>1 Turn the volume knob to select a category, then press the knob.</li> <li>2 Turn the volume knob to select a channel you want to lock, then press the knob. "L" appears in front of the channel number.</li> <li>3 Press and hold <b>Q / ↵</b> to exit.</li> </ol>
<b>CHANNEL CLEAR*1</b>	<b>YES:</b> Clears all the locked channels. ; <b>NO:</b> Cancels.
<b>TUNE START*2</b>	<b>ON:</b> Selected SmartFavorite channel starts playback from the beginning of the song. ; <b>OFF:</b> Cancels.
<b>SIGNAL LEVEL</b>	<b>NO SIGNAL/ WEAK/ GOOD/ STRONG:</b> Shows the strength of the current received signal.
<b>BUFFER USAGE</b>	<b>0% — 100% (0):</b> Shows the memory usage for Replay buffer.
<b>SXM RESET</b>	<b>YES:</b> Resets stored channel and lock setting to default. ; <b>NO:</b> Cancels.

\*1 Displayed only when [USER DEFINED] is selected.

\*2 Available only if the connected SiriusXM Vehical Tuner is SXV200 or later that supports SmartFavorites.

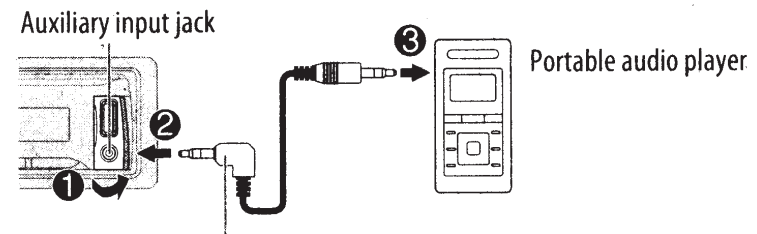
## AUX

### Preparation:

Select [ON] for [BUILT-IN AUX]. (→ 4)

### Start listening

- 1 Connect a portable audio player (commercially available).



3.5 mm (1/8") stereo mini plug with "L" shaped connector (commercially available)

- 2 Press **⏻ SRC** repeatedly to select AUX.
- 3 Turn on the portable audio player and start playback.

### Set the AUX name

While listening to a portable audio player connected to the unit...

- 1 Press the volume knob to enter [FUNCTION].
- 2 Turn the volume knob to select [SYSTEM], then press the knob.
- 3 Turn the volume knob to select [AUX NAME SET], then press the knob.
- 4 Turn the volume knob to make a selection, then press the knob. AUX (default)/ DVD/ PORTABLE/ GAME/ VIDEO/ TV
- 5 Press and hold **Q / ↵** to exit.

To return to the previous setting item, press **Q / ↵**.

# BLUETOOTH®

## BLUETOOTH — Connection

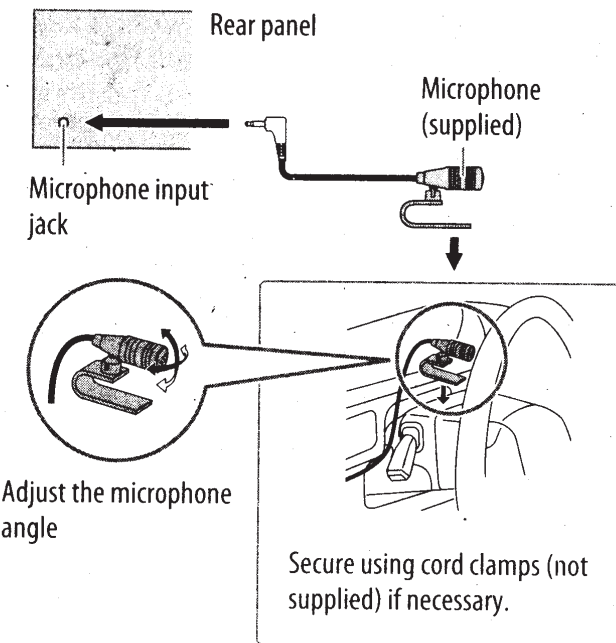
### Supported Bluetooth profiles

- Hands-Free Profile (HFP)
- Serial Port Profile (SPP)
- Phonebook Access Profile (PBAP)
- Advanced Audio Distribution Profile (A2DP)
- Audio/Video Remote Control Profile (AVRCP)

### Supported Bluetooth codecs

- Sub Band Codec (SBC)
- Advanced Audio Coding (AAC)

### Connect the microphone



### Pair a Bluetooth device

When connecting a Bluetooth device to the unit for the first time, perform pairing between the unit and the device.

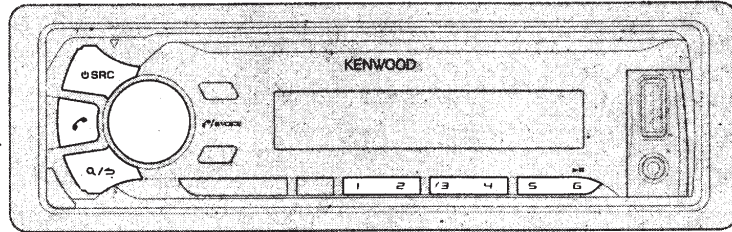
- 1 Press **⏻ SRC** to turn on the unit.
- 2 Search and select this unit model name (**KMM-BT3\*\*U/ KMR-M3\*\*BT**) on the Bluetooth device.  
"PAIRING" → "PASS XXXXXX" → Device name → "PRESS" → "VOLUME KNOB" scrolls on the display.
  - For some Bluetooth devices, you may need to enter the Personal Identification Number (PIN) code immediately after searching.
  - Refer also to the manual supplied with your Bluetooth device.
- 3 Press the volume knob to start pairing.  
"PAIRING OK" appears when pairing is completed and "📶" will light up when the Bluetooth connection is established.

- Up to five devices can be registered (paired) in total.
- Only one Bluetooth device can be connected at any time.
- This unit supports Secure Simple Pairing (SSP).
- Some Bluetooth devices may not automatically connect to the unit after pairing. Connect the device to the unit manually. Refer to the instruction manual of the Bluetooth device for more information.
- Once the pairing is completed, the Bluetooth device will remain registered in the unit even if you reset the unit. To delete the paired device, → 18, [DEVICE DELETE].
- When you connect iPhone/ iPod touch/ Android device to the USB input terminal, pairing request (via Bluetooth) is automatically activated. Press the volume knob to pair once you have confirmed the device name.  
Automatic pairing request is activated only if:
  - Bluetooth function of the connected device is turned on.
  - [AUTO PAIRING] is set to [ON]. (→ 18)
  - KENWOOD MUSIC PLAY application is installed on the Android device.



# BLUETOOTH®

## BLUETOOTH — Mobile phone



### Receive a call

When there is an incoming call:

- All the buttons and display flash.
- The unit answers the call automatically if [AUTO ANSWER] is set to a selected time. (→ 16)

During a call:

- The buttons and display illuminate according to the settings made for [DISPLAY]. (→ 21)
- If you turn off the unit or detach the faceplate, the Bluetooth connection is disconnected.

To	On the faceplate	On the remote control
Answer a call	Press  or the volume knob or one of the number buttons (1 to 6).	Press .
Reject a call	Press  SRC.	Press .
End a call	Press  or  SRC.	Press .
Adjust the phone volume [00] to [35] (Default: [15]*)	Turn the volume knob during a call. <ul style="list-style-type: none"> <li>• This adjustment will not affect the volume of the other sources.</li> </ul>	—
Switch between hands-free and private talk modes	Press <b>6</b> during a call. <ul style="list-style-type: none"> <li>• Operations may vary according to the connected Bluetooth device.</li> </ul>	—

\* Not applicable for iPhone. During a call, the unit synchronizes the phone volume on the iPhone to the unit.

### ■ Improve the voice quality

While talking on the phone...

- 1 Press the volume knob to enter [FUNCTION].
- 2 Turn the volume knob to make a selection (see the following table), then press the knob.
- 3 Repeat step 2 until the desired item is selected or activated.
- 4 Press and hold **Q/➤** to exit.

To return to the previous setting item, press **Q/➤**.

Default: **XX**

MIC GAIN	-10 — +10 ( <b>-4</b> ): The sensitivity of the microphone increases as the number increased.
NR LEVEL	-5 — +5 ( <b>0</b> ): Adjust the noise reduction level until the least noise is being heard during a phone conversation.
ECHO CANCEL	-5 — +5 ( <b>0</b> ): Adjust the echo cancellation delay time until the least echo is being heard during a phone conversation.

# BLUETOOTH®

## Make the settings for receiving a call

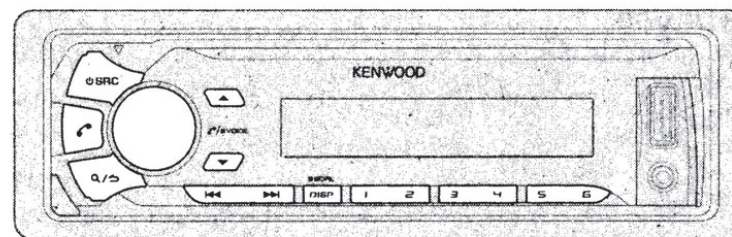
- 1 Press to enter Bluetooth mode.
- 2 Turn the volume knob to make a selection (see the following table), then press the knob.
- 3 Repeat step 2 until the desired item is selected or activated.
- 4 Press and hold to exit.

To return to the previous setting item, press .

Default: **XX**

### SETTINGS

<b>AUTO ANSWER</b>	<b>1 — 30:</b> The unit answers incoming call automatically in the selected time (in seconds). ; <b>OFF:</b> Cancels.
<b>BATT/SIGNAL</b>	<b>AUTO:</b> Shows the strength of the battery and signal when the unit detects a Bluetooth device and the Bluetooth device is connected. ; <b>OFF:</b> Cancels. Clock time is shown.



## Make a call

You can make a call from the call history, phonebook, or dialing the number. Call by voice is also possible if your mobile phone has the feature.

- 1 Press to enter Bluetooth mode.
- 2 Turn the volume knob to make a selection (see the following table), then press the knob.
- 3 Repeat step 2 until the desired item is selected/activated or follow the instructions stated on the selected item.
- 4 Press and hold to exit.

To return to the previous setting item, press .

- |                     |   |
|---------------------|---|
| <b>CALL HISTORY</b> | <ol style="list-style-type: none"><li>1 Press the volume knob to select a name or a phone number.<ul style="list-style-type: none"><li>• "INCOMING", "OUTGOING", or "MISSED" is shown on the lower part of the display to indicate the previous call status.</li><li>• Press <b>DISP SCRL</b> to change the display category (NUMBER or NAME).</li><li>• "NO DATA" appears if there is no recorded call history.</li></ul></li><li>2 Press the volume knob to call.</li></ol> |
|---------------------|---|

- |                   |   |
|-------------------|---|
| <b>PHONE BOOK</b> | <ol style="list-style-type: none"><li>1 Turn the volume knob quickly to enter alphabet search mode (if the phonebook contains many contacts). The first menu (ABCDEFGHIJK) appears.<ul style="list-style-type: none"><li>• To go to the other menu (LMNOPQRSTUVWXYZ or WXYZ1*), press .</li><li>• To select the desired first letter, turn the volume knob or press , then press the knob. Select "1" to search with numbers and select "*" to search with symbols.</li></ul></li><li>2 Turn the volume knob to select a name, then press the knob.</li><li>3 Turn the volume knob to select a phone number, then press the knob to call.<ul style="list-style-type: none"><li>• If the phone supports PBAP, the phonebook of the connected phone is automatically transferred to the unit when pairing.</li><li>• Contacts are categorized as: HOME, OFFICE, MOBILE, OTHER, GENERAL</li><li>• This unit can display only non-accent letters. (Accent letters such as "Ú" is shown as "U".)</li></ul></li></ol> |
|-------------------|---|

## BLUETOOTH®

<b>NUMBER DIAL</b>	<ol style="list-style-type: none"><li>1 Turn the volume knob to select a number (0 to 9) or character (*, #, +).</li><li>2 Press <b>◀◀ / ▶▶</b> to move the entry position. Repeat steps <b>1</b> and <b>2</b> until you finish entering the phone number.</li><li>3 Press the volume knob to call. (or using RC-406)<ol style="list-style-type: none"><li>1 Press the number buttons (<b>0</b> to <b>9</b>) to enter the phone number.</li><li>2 Press <b>☞</b> to call.</li></ol></li></ol>
<b>VOICE</b>	Speak the name of the contact you want to call or the voice command to control the phone functions. (⇒ <b>Make a call using voice recognition</b> )
<b>BATT*</b>	<b>LOW/ MID/ FULL:</b> Shows the strength of the battery.
<b>SIGNAL*</b>	<b>NO SIGNAL/ LOW/ MID/ MAX:</b> Shows the strength of the current received signal.

\* Functionality depends on the type of the phone used.

### ■ Make a call using voice recognition

- 1 Press and hold **☞** to activate the connected phone.
- 2 Speak the name of the contact you want to call or the voice command to control the phone functions.

- Supported Voice Recognition features vary for each phone. Refer to the instruction manual of the connected phone for details.
- This unit also supports the intelligent personal assistant function of iPhone.

### Delete a contact

- 1 Press **☞** to enter Bluetooth mode.
- 2 Turn the volume knob to select **[CALL HISTORY]**, then press the knob.
- 3 Turn the volume knob to select a contact.
- 4 Press and hold the volume knob to enter delete mode.
- 5 Turn the volume knob to select **[DELETE ONE]** or **[DELETE ALL]**, then press the knob.  
**DELETE ONE:** Selected name or phone number in step **3** is deleted.  
**DELETE ALL:** All names or phone numbers in **[CALL HISTORY]** in step **2** is deleted.
- 6 Turn the volume knob to select **[YES]**, then press the knob.
- 7 Press and hold **Q/↵** to exit.

- To return to the previous setting item, press **Q/↵**.
- Not applicable for mobile phone that supports PBAP.

### Settings in memory

#### ■ Store a contact in memory

You can store up to 6 contacts into the number buttons (**1** to **6**).

- 1 Press **☞** to enter Bluetooth mode.
- 2 Turn the volume knob to select **[CALL HISTORY]**, **[PHONE BOOK]**, or **[NUMBER DIAL]**, then press the knob.
- 3 Turn the volume knob to select a contact or enter a phone number.  
If a contact is selected, press the volume knob to show the phone number.
- 4 Press and hold one of the number buttons (**1** to **6**).  
"STORED" appears when the contact is stored.

To erase a contact from the preset memory, select **[NUMBER DIAL]** in step **2** and store a blank number.

#### ■ Make a call from memory

- 1 Press **☞** to enter Bluetooth mode.
- 2 Press one of the number buttons (**1** to **6**).
- 3 Press the volume knob to call.  
"NO MEMORY" appears if there is no contacts stored.

# BLUETOOTH®

## Other settings

- 1 Press the volume knob to enter [FUNCTION].
- 2 Turn the volume knob to make a selection (see the following table), then press the knob.
- 3 Repeat step 2 until the desired item is selected/activated or follow the instructions stated on the selected item.
- 4 Press and hold **Q** / **↵** to exit.

To return to the previous setting item, press **Q** / **↵**.

Default: **XX**

## BT MODE

PHONE SELECT	Selects the phone or audio device to connect or disconnect. "✳" appears in front of the device name when connected.
AUDIO SELECT	<ul style="list-style-type: none"> <li>• You can only connect another Bluetooth device by disconnecting the connected Bluetooth device first.</li> <li>• "✳" disappears when disconnected.</li> </ul>
DEVICE DELETE	<ol style="list-style-type: none"> <li>1 Turn the volume knob to select a device to delete, then press the knob.</li> <li>2 Turn the volume knob to select [YES] or [NO], then press the knob.</li> </ol>
PIN CODE EDIT (0000)	<p>Changes the PIN code (up to 6 digits).</p> <ol style="list-style-type: none"> <li>1 Turn the volume knob to select a number.</li> <li>2 Press <b>◀◀</b> / <b>▶▶</b> to move the entry position. Repeat steps 1 and 2 until you finish entering the PIN code.</li> <li>3 Press the volume knob to confirm.</li> </ol>
RECONNECT	<p><b>ON</b>: The unit automatically reconnect when the last connected Bluetooth device is within range. ;</p> <p><b>OFF</b>: Cancels.</p>
AUTO PAIRING	<p><b>ON</b>: The unit automatically pair supported Bluetooth device (iPhone/ iPod touch/ Android device) when it is connected through USB input terminal. Depending on the operating system of the connected device, this function may not work. ;</p> <p><b>OFF</b>: Cancels.</p>
INITIALIZE	<p><b>YES</b>: Initializes all the Bluetooth settings (including stored pairing, phonebook, and etc.). ;</p> <p><b>NO</b>: Cancels.</p>

## Bluetooth test mode

You can check the connectivity of the supported profile between the Bluetooth device and the unit.

- Make sure there is no Bluetooth device paired.

- 1 Press and hold **↶**.  
"PLEASE PAIR YOUR PHONE PIN 0000" appears.
- 2 Search and select this unit model name (KMM-BT3\*\*U/ KMR-M3\*\*BT) on the Bluetooth device.
- 3 Operate the Bluetooth device to confirm pairing.  
"TESTING" flashes on the display.

The connectivity result (OK or NG) appears after the test.

PAIRING: Pairing status

HF CNT: Hands-Free Profile (HFP) compatibility

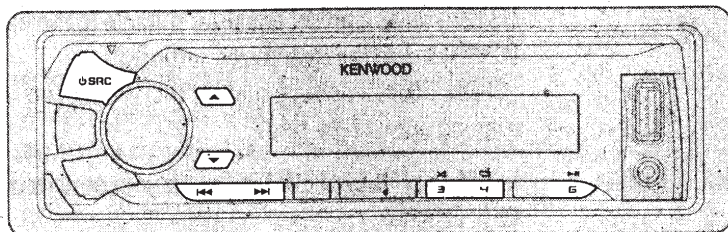
AUD CNT: Advanced Audio Distribution Profile (A2DP) compatibility

PB DL: Phonebook Access profile (PBAP) compatibility

To cancel test mode, press and hold **⏻ SRC** to turn off the unit.

# BLUETOOTH®

## BLUETOOTH — Audio



### Audio player via Bluetooth

- 1 Press **⏻ SRC** repeatedly to select BT AUDIO (or press **SRC** on RC-406).
- 2 Operate the Bluetooth audio player to start playback.

To	On the faceplate	On the remote control
Playback / pause	Press <b>6 ▶  </b> .	Press <b>ENT ▶  </b> .
Select group or folder	Press <b>▲ / ▼</b> .	Press <b>#FM+ / *AM-</b> .
Reverse / Forward skip	Press <b>◀◀ / ▶▶</b> .	Press <b>◀◀ / ▶▶ (+)</b> .
Reverse / Fast-forward	Press and hold <b>◀◀ / ▶▶</b> .	Press and hold <b>◀◀ / ▶▶ (+)</b> .
Repeat play	Press <b>4 ↻</b> repeatedly. ALL REPEAT, FILE REPEAT, REPEAT OFF	—
Random play	Press <b>3 ⌘</b> repeatedly. FOLDER RANDOM, RANDOM OFF Press and hold <b>3 ⌘</b> to select ALL RANDOM.	—

Operations and display indications may differ according to their availability on the connected device.

### Internet radio via Bluetooth

#### Listen to Pandora

##### Preparation:

Select **[ON]** for **[PANDORA SRC]**. (➔ 4)

You can listen to Pandora on your smart phone (Android OS) through Bluetooth on this unit.

- 1 Open the Pandora application on your device.
- 2 Connect your Bluetooth audio player via Bluetooth connection. (➔ 14)
- 3 Press **⏻ SRC** repeatedly to select **PANDORA**.  
The source switches and broadcast starts automatically.

You can operate Pandora in the same way as Pandora for iPod/iPhone. (➔ 9)

#### Listen to iHeartRadio

##### Preparation:

Select **[ON]** for **[IHEART SRC]**. (➔ 4)

You can listen to iHeartRadio on your smart phone (Android OS) through Bluetooth on this unit.

- 1 Open the iHeart Link application on your smart phone.
- 2 Connect your smart phone via Bluetooth connection. (➔ 14)
- 3 Press **⏻ SRC** repeatedly to select **IHEART RADIO**.  
The source switches and broadcast starts automatically.

You can operate iHeartRadio in the same way as iHeartRadio for iPod/iPhone. (➔ 10)

# AUDIO SETTINGS

While listening to any source...

- 1 Press the volume knob to enter [FUNCTION].
- 2 Turn the volume knob to select [AUDIO CONTROL], then press the knob.
- 3 Turn the volume knob to make a selection (see the following table), then press the knob.
- 4 Repeat step 3 until the desired item is selected or activated.
- 5 Press and hold **Q**/**↵** to exit.

(or using RC-406)

- 1 Press **AUD** to enter [AUDIO CONTROL].
- 2 Press **▲**/**▼** to make a selection, then press **ENT ▶ ||**.

To return to the previous setting item, press **Q**/**↵**.

Default: **XX**

<b>SUB-W LEVEL</b>	-15 to +15 (0)	Adjusts the subwoofer output level.
<b>BASS LEVEL</b>	-8 to +8 (+6)	Adjusts the level to memorize for each source. (Before making an adjustment, select the source you want to adjust.)
<b>MID LEVEL</b>	-8 to +8 (+5)	
<b>TRE LEVEL</b>	-8 to +8 (0)	

## EQ PRO

<b>BASS ADJUST</b>	<b>BASS CTR FRQ</b>	60HZ/ 80HZ/ 100HZ/ <u>200HZ</u> : Selects the center frequency.
	<b>BASS LEVEL</b>	-8 to +8 (+6): Adjusts the level.
	<b>BASS Q FACTOR</b>	1.00/ 1.25/ 1.50/ 2.00: Adjusts the quality factor.
<b>MID ADJUST</b>	<b>BASS EXTEND</b>	ON: Turns on the extended bass. ; OFF: Cancels.
	<b>MID CTR FRQ</b>	0.5KHZ/ 1.0KHZ/ 1.5KHZ/ <u>2.5KHZ</u> : Selects the center frequency.
	<b>MID LEVEL</b>	-8 to +8 (+5): Adjusts the level.
<b>TRE ADJUST</b>	<b>MID Q FACTOR</b>	0.75/ 1.00/ <u>1.25</u> : Adjusts the quality factor.
	<b>TRE CTR FRQ</b>	10.0KHZ/ <u>12.5KHZ</u> / 15.0KHZ/ 17.5KHZ: Selects the center frequency.
	<b>TRE LEVEL</b>	-8 to +8 (0): Adjusts the level.

<b>PRESET EQ</b>	<b>DRIVE EQ/ TOP40/ POWERFUL/ ROCK/ POPS/ EASY/ JAZZ/ NATURAL/ USER</b> : Selects a preset equalizer suitable to the music genre. (Select [USER] to use the customized settings.) [DRIVE EQ] is a preset equalizer that reduces noise outside the car or running noise of the tyres.
<b>BASS BOOST</b>	<b>LEVEL1/ LEVEL2/ LEVEL3</b> : Selects your preferred bass boost level. ; <b>OFF</b> : Cancels.
<b>LOUDNESS</b>	<b>LEVEL1/ LEVEL2</b> : Selects your preferred low and high frequencies boost to produce a well-balanced sound at a low volume level. ; <b>OFF</b> : Cancels.
<b>SUBWOOFER SET</b>	<b>ON</b> : Turns on the subwoofer output. ; <b>OFF</b> : Cancels.
<b>LPF SUBWOOFER</b>	<b>THROUGH</b> : All signals are sent to the subwoofer. ; <b>85HZ/ 120HZ/ 160HZ</b> : Audio signals with frequencies lower than 85 Hz/ 120 Hz/ 160 Hz are sent to the subwoofer.
<b>SUB-W PHASE</b>	<b>REVERSE (180°)/ NORMAL (0°)</b> : Selects the phase of the subwoofer output to be in line with the speaker output for optimum performance. (Selectable only if a setting other than [THROUGH] is selected for [LPF SUBWOOFER].)
<b>HPF</b>	<b>THROUGH</b> : All signals are sent to the speakers. ; <b>100HZ/ 120HZ/ 150HZ</b> : Audio signals with frequencies higher than 100 Hz/ 120 Hz/ 150 Hz are sent to the speakers.
<b>FADER</b>	<b>R15 to F15 (0)</b> : Adjusts the rear and front speaker output balance.
<b>BALANCE</b>	<b>L15 to R15 (0)</b> : Adjusts the left and right speaker output balance.
<b>VOLUME OFFSET</b>	For AUX: -8 to +8 (0) ; For other sources: -8 to 0: Presets the volume adjustment level of each source. (Before adjustment, select the source you want to adjust.)
<b>SOUND RECNRSTR</b> (Sound reconstruction)	<b>ON</b> : Creates realistic sound by compensating the high-frequency components and restoring the rise-time of the waveform that are lost in audio data compression. ; <b>OFF</b> : Cancels.

[SUB-W LEVEL]/ [LPF SUBWOOFER]/ [SUB-W PHASE] is selectable only if [SUBWOOFER SET] is set to [ON].

## DISPLAY SETTINGS

- 1 Press the volume knob to enter [FUNCTION].
- 2 Turn the volume knob to select [DISPLAY], then press the knob.
- 3 Turn the volume knob to make a selection (see the following table), then press the knob.
- 4 Repeat step 3 until the desired item is selected/activated or follow the instructions stated on the selected item.
- 5 Press and hold **Q/↵** to exit.

To return to the previous setting item, press **Q/↵**.

Default: **XX**

<b>COLOR SELECT</b>	<b>VARIABLE SCAN/ CUSTOM R/G/B/</b> preset colors*: Selects your preferred key and display illumination color.  You can create your own color (when [CUSTOM R/G/B] or preset colors* is selected). The color you have created can be stored in [CUSTOM R/G/B]. <b>1</b> Press and hold the volume knob to enter the detailed color adjustment. <b>2</b> Press <b>◀◀/ ▶▶</b> to select the color (R/ G/ B) to adjust. <b>3</b> Turn the volume knob to adjust the level (0 — 9), then press the knob.
<b>DIMMER</b>	<b>ON:</b> Dims the display and button illumination. ; <b>OFF:</b> Cancels.
<b>BRIGHTNESS</b>	<b>0 — 31:</b> Selects your preferred brightness level for display and button illumination.
<b>TEXT SCROLL</b>	<b>AUTO/ ONCE:</b> Selects whether to scroll the display information automatically, or scroll only once. ; <b>OFF:</b> Cancels.

\* Preset colors: **RED1/ RED2/ RED3/ PURPLE1/ PURPLE2/ PURPLE3/ PURPLE4/ BLUE1/ BLUE2/ BLUE3/ SKYBLUE1/ SKYBLUE2/ LIGHTBLUE/ AQUA1/ AQUA2/ GREEN1/ GREEN2/ GREEN3/ YELLOWGREEN1/ YELLOWGREEN2/ YELLOW/ ORANGE1/ ORANGE2/ ORANGERED**

## MORE INFORMATION

### General

Detailed information and notes about the playable audio files are stated in an online manual on the following web site: [www.kenwood.com/cs/ce/audiofile/](http://www.kenwood.com/cs/ce/audiofile/)

### Playable files

- Playable audio file: MP3 (.mp3), WMA (.wma), AAC (.m4a), WAV (.wav), FLAC (.flac)
- Playable USB device file system: FAT12, FAT16, FAT32

Even when audio files comply with the standards listed above, playback may be impossible depending on the types or conditions of media or device.

### About USB devices

- This unit can play MP3/WMA/AAC/WAV/FLAC files stored on a USB mass storage class device.
- You cannot connect a USB device via a USB hub.
- Connecting a cable whose total length is longer than 5 m may result in abnormal playback.
- This unit cannot recognize a USB device whose rating is other than 5 V and exceeds 1 A.

### About KENWOOD Music Editor Light and KENWOOD Music Control

- This unit supports the PC application KENWOOD Music Editor Light and Android™ application KENWOOD Music Control.
- When you play audio files with song data added using the KENWOOD Music Editor Light or KENWOOD Music Control, you can search for audio files by Genres, Artists, Albums, Playlists, and Songs.
- KENWOOD Music Editor Light and KENWOOD Music Control are available on the following website: [www.kenwood.com/cs/ce/](http://www.kenwood.com/cs/ce/)

### About iPod/iPhone

Made for

- iPod touch (2nd, 3rd, 4th, and 5th generation)
- iPod classic
- iPod nano (3rd, 4th, 5th, 6th, and 7th generation)
- iPhone 3G, 3GS, 4, 4S, 5, 5S, 5C
- For the latest compatible list and software versions of iPhone/iPod, see: [www.kenwood.com/cs/ce/ipod](http://www.kenwood.com/cs/ce/ipod)
- You cannot operate iPod if "KENWOOD" or "✓" is displayed on iPod.

### About Android device

- This unit supports Android OS 4.1 and above.
- Some Android devices (with OS 4.1 and above) may not fully support Android Open Accessory (AOA) 2.0.
- If the Android device supports both mass storage class device and AOA 2.0, this unit always playback via AOA 2.0 as priority.
- For more information and the latest compatible list, see: [www.kenwood.com/cs/ce/](http://www.kenwood.com/cs/ce/)

## MORE INFORMATION

### About Pandora

- Pandora is available only in the U.S., Australia and New Zealand.
- Because Pandora is a third-party service, the specifications are subject to change without prior notice. Accordingly, compatibility may be impaired, or some or all of the services may become unavailable.
- Some functions of Pandora cannot be operated from this unit.
- For issues using the application, please contact Pandora at [pandora-support@pandora.com](mailto:pandora-support@pandora.com).

### About iHeartRadio

- iHeartRadio® is a third-party service, therefore the specifications are subject to change without prior notice. Accordingly, compatibility may be impaired or some or all of the services may become unavailable.
- Some iHeartRadio® functionality cannot be operated from this unit.

### About Bluetooth

- Depending on the Bluetooth version of the device, some Bluetooth devices may not be able to connect to this unit.
- This unit may not work with some Bluetooth devices.
- Signal conditions vary, depending on the surroundings.
- For more information about Bluetooth, visit the following website: [www.kenwood.com/cs/ce/](http://www.kenwood.com/cs/ce/)

## TROUBLESHOOTING

	Symptom	Remedy
General	Sound cannot be heard.	<ul style="list-style-type: none"> <li>• Adjust the volume to the optimum level.</li> <li>• Check the cords and connections.</li> </ul>
	"MISWIRING CHECK WIRING THEN PWR ON" appears.	Turn the power off, then check to be sure the terminals of the speaker wires are insulated properly. Turn the power on again.
	"PROTECTING SEND SERVICE" appears.	Send the unit to the nearest service center.
	<ul style="list-style-type: none"> <li>• Sound cannot be heard.</li> <li>• The unit does not turn on.</li> <li>• Information shown on the display is incorrect.</li> </ul>	Clean the connectors. (→ 2)
	The unit does not work at all.	Reset the unit. (→ 3)
Radio	(For <b>KMR-M312BT</b> ) "SET ERROR" / "DEL ERROR"	Setting/deleting the remote control ID is unsuccessful. Turn the power off, then turn on the power and perform the operation again. (→ 5)
	<ul style="list-style-type: none"> <li>• Radio reception is poor.</li> <li>• Static noise while listening to the radio.</li> </ul>	<ul style="list-style-type: none"> <li>• Connect the antenna firmly.</li> <li>• Pull the antenna out all the way.</li> </ul>
	"READING" keeps flashing.	Do not use too many hierarchical levels or folders.
	Elapsed playing time is not correct.	This is caused by how the files are recorded.
	Correct characters are not displayed (e.g. album name).	This unit can only display uppercase letters, numbers, and a limited number of symbols.
USB / iPod	"NA FILE"	Make sure the media contains supported audio files. (→ 21)
	"READ ERROR"	Copy the files and folders onto the USB device again. If this does not solve the problem, reset the USB device or use another USB device.
	"NO DEVICE"	Connect a USB device, and change the source to USB again.
	"COPY PRO"	A copy-protected file is played.



# TROUBLESHOOTING

Symptom	Remedy
USB / iPod	"NA DEVICE" Connect a supported USB device, and check the connections.
	"NO MUSIC" Connect a USB device that contains playable audio files.
	"iPod ERROR" <ul style="list-style-type: none"> <li>• Reconnect the iPod.</li> <li>• Reset the iPod.</li> </ul>
ANDROID	<ul style="list-style-type: none"> <li>• Sound cannot be heard during playback.</li> <li>• Sound output only from the Android device.</li> </ul> <ul style="list-style-type: none"> <li>• Reconnect the Android device.</li> <li>• If in [HAND MODE], launch any media player application on the Android device and start playback.</li> <li>• If in [HAND MODE], relaunch the current media player application or use another media player application.</li> <li>• Restart the Android device.</li> <li>• If this does not solve the problem, the connected Android device is unable to route the audio signal to unit. (→ 21)</li> </ul>
	Cannot playback at [BROWSE MODE]. <ul style="list-style-type: none"> <li>• Make sure KENWOOD MUSIC PLAY APP is installed on the Android device. (→ 8)</li> <li>• Reconnect the Android device and make the appropriate setting in [ANDROID SETUP]. (→ 8)</li> <li>• If this does not solve the problem, the connected Android device does not support [BROWSE MODE]. (→ 21)</li> </ul>
	"NO DEVICE" or "READING" keeps flashing. <ul style="list-style-type: none"> <li>• Switch off the developer options on the Android device.</li> <li>• Reconnect the Android device.</li> <li>• If this does not solve the problem, the connected Android device does not support [BROWSE MODE]. (→ 21)</li> </ul>
	Playback is intermittent or sound skips. Turn off the power saving mode on the Android device.
	"ANDROID ERROR" / "NA DEVICE" <ul style="list-style-type: none"> <li>• Reconnect the Android device.</li> <li>• Restart the Android device.</li> </ul>

Symptom	Remedy
Pandora	"ADD ERROR" / "SEARCH ERROR" New station creation is unsuccessful.
	"CHECK DEVICE" Check the Pandora application on your device.
	"NO SKIPS" The skip limit has been reached.
	"NO STATIONS" No stations are found.
	"STATION LIMIT" The number of registered stations has reached its limit. Retry after deleting unnecessary stations from your device.
	"CONNECT ERROR" Communication is unstable.
	"RATING ERROR" Registration of thumbs up/thumbs down has failed.
iHeartRadio	"LICENSE ERROR" You try to access from a country which Pandora is not deliverable.
	iHeartRadio station cannot be selected. If "Explicit Content" in [Account Settings] is checked in the web version of iHeartRADIO, custom stations become unavailable.
	"CANNOT CREATE" Custom station name creation is unsuccessful.
	"CANNOT SAVE" Addition to the favorite category failed.
	"DISCONNECTED" Check the connection to the device.
	"NO SKIPS" The skip limit has been reached. Retry later.
	"NO STATIONS" No stations are found.
	"NOT CONNECTED" Link to the application is impossible.
"IHEARTLINK UP" Make sure you have installed the latest version of the iHeart Link for KENWOOD application on your device.	
"PLEASE LOGIN" You haven't log in. Log in again.	

# TROUBLESHOOTING

	Symptom	Remedy
iHeartRadio	"STATION NOT AVAILABLE"	Broadcast from the station is over.
	"STATION NOT SELECTED"	No station is selected.
	"STREAM ERROR"	Broadcast data is interrupted.
	"THUMB FAILED"	Registration of Thumbs Up/Down has failed.
	"TIMED OUT"	The request has resulted in time-out.
SiriusXM® Radio	"CH LOCKED LOCK CODE?"	The selected channel is locked. Enter the correct pass code to unlock. (➔ 13)
	"CHAN UNSUB"	The selected channel is unsubscribed. Call 1-866-635-2349 in U.S.A. or 1-877-438-9677 in Canada to subscribe. (➔ 11)
	"CH UNAVAIL"	The selected channel is unavailable. Visit <a href="http://www.siriusxm.com">www.siriusxm.com</a> for more information about the SiriusXM channel lineup.
	"CHECK ANTENNA"	Check the antenna and its connection are in good condition.
	"CHECK TUNER"	Make sure the SiriusXM Vehicle Tuner is connected to the unit.
	"NO SIGNAL"	Make sure the antenna is mounted outside the vehicle.
	"SUBSCRIPTION UPDATED – PRESS ENTER TO CONTINUE."	Your subscription is updated. Press the volume knob to continue.
	"CODE ERROR"	Make sure you have entered the correct pass code. (➔ 13)
	"NO CONTENT"	There is insufficient content to start TuneScan.
	"SCAN CANCEL"	TuneScan has been aborted.

	Symptom	Remedy
Bluetooth®	No Bluetooth device is detected.	<ul style="list-style-type: none"> <li>• Search from the Bluetooth device again.</li> <li>• Reset the unit. (➔ 3)</li> </ul>
	Bluetooth pairing cannot be made.	<ul style="list-style-type: none"> <li>• Make sure you have entered the same PIN code to both the unit and Bluetooth device.</li> <li>• Delete pairing information from both the unit and the Bluetooth device, then perform pairing again. (➔ 14)</li> </ul>
	Echo or noise is heard during a phone conversation.	<ul style="list-style-type: none"> <li>• Adjust the microphone unit's position. (➔ 14)</li> <li>• Check the [ECHO CANCEL] setting. (➔ 15)</li> </ul>
	Phone sound quality is poor.	<ul style="list-style-type: none"> <li>• Reduce the distance between the unit and the Bluetooth device.</li> <li>• Move the car to a place where you can get a better signal reception.</li> </ul>
	Voice calling method is not successful.	<ul style="list-style-type: none"> <li>• Use voice calling method in a more quiet environment.</li> <li>• Reduce the distance from the microphone when you speak the name.</li> <li>• Make sure the same voice as the registered voice tag is used.</li> </ul>
	Sound is being interrupted or skipped during playback of a Bluetooth audio player.	<ul style="list-style-type: none"> <li>• Reduce the distance between the unit and the Bluetooth audio player.</li> <li>• Turn off, then turn on the unit and try to connect again.</li> <li>• Other Bluetooth devices might be trying to connect to the unit.</li> </ul>
	The connected Bluetooth audio player cannot be controlled.	<ul style="list-style-type: none"> <li>• Check whether the connected Bluetooth audio player supports Audio/Video Remote Control Profile (AVRCP). (Refer to the instructions of your audio player.)</li> <li>• Disconnect and connect the Bluetooth player again.</li> </ul>

## TROUBLESHOOTING

Symptom	Remedy
"DEVICE FULL"	The number of registered devices has reached its limit. Retry after deleting an unnecessary device. (→ 18, <b>DEVICE DELETE</b> )
"N/A VOICE TAG"	Make sure the same voice as the registered voice tag is used.
"NOT SUPPORT"	The connected phone does not support Voice Recognition feature.
"NO ENTRY"/"NO PAIR"	There is no registered device connected/found via Bluetooth.
"ERROR"	Try the operation again. If "ERROR" appears again, check if the device supports the function you have tried.
"NO INFO"	Bluetooth device cannot get the contact information.
"HF ERROR XX" / "BT ERROR"	Reset the unit and try the operation again. If this does not solve the problem, consult your nearest service center.

Bluetooth®

## SPECIFICATIONS

Tuner	FM Frequency Range	87.9 MHz — 107.9 MHz (200 kHz space)
	Usable Sensitivity (S/N = 26 dB)	8.2 dBf (0.71 $\mu$ V/75 $\Omega$ )
	Quieting Sensitivity (DIN S/N = 46 dB)	17.2 dBf (2.0 $\mu$ V/75 $\Omega$ )
	Frequency Response ( $\pm 3$ dB)	30 Hz — 15 kHz
	Signal-to-Noise Ratio (MONO)	64 dB
	Stereo Separation (1 kHz)	40 dB
AM	Frequency Range	530 kHz — 1 700 kHz (10 kHz space)
	Usable Sensitivity (S/N = 20 dB)	29 dB $\mu$ (28.2 $\mu$ V)
USB	USB Standard	USB 1.1, USB 2.0 (Full speed)
	File System	FAT12/ 16/ 32
	Maximum Supply Current	DC 5 V $\leq$ 1 A
	Frequency Response ( $\pm 1$ dB)	20 Hz — 20 kHz
	Signal-to-Noise Ratio (1 kHz)	105 dB
	Dynamic Range	90 dB
	Channel Separation	85 dB
	MP3 Decode	Compliant with MPEG-1/2 Audio Layer-3
	WMA Decode	Compliant with Windows Media Audio
	AAC Decode	AAC-LC ".m4a" files
WAV Decode	RIFF waveform Audio Format (Linear PCM only)	
FLAC Decode	FLAC files	
Auxiliary	Frequency Response ( $\pm 3$ dB)	20 Hz — 20 kHz
	Input Maximum Voltage	1 000 mV
	Input Impedance	30 k $\Omega$

## SPECIFICATIONS

Bluetooth	Version	Bluetooth Ver.2.1+EDR / Bluetooth 3.0
	Frequency Range	2.402 GHz — 2.480 GHz
	Output Power	+4 dBm (MAX), 0 dBm (AVE) Power Class 2
	Maximum Communication Range	Line of sight approx. 10 m (32.8 ft)
	Profile	HFP (Hands-Free Profile) SPP (Serial Port Profile) PBAP (Phonebook Access Profile) A2DP (Advanced Audio Distribution Profile) AVRCP (Audio/Video Remote Control Profile)
Audio	Maximum Output Power	50 W × 4
	Full Bandwidth Power	22 W × 4 (at less than 1 % THD)
	Speaker Impedance	4 Ω — 8 Ω
	Tone Action	Bass: 200 Hz ±8 dB Middle: 2.5 kHz ±8 dB Treble: 12.5 kHz ±8 dB
	Preout Level/Load (USB)	2 500 mV/10 kΩ
	Preout Impedance	≤ 600 Ω
General	Operating Voltage	14.4 V (10.5 V — 16 V allowable)
	Maximum Current Consumption	10 A
	Operational Temperature Range	0°C — +40°C
	Installation Size (W × H × D)	182 mm × 53 mm × 107 mm (7-3/16" × 2-1/16" × 4-3/16")
	Weight	<b>KMM-BT312U</b> : 0.62 kg (1.37 lbs) <b>KMR-M312BT</b> : 0.66 kg (1.46 lbs)

Subject to change without notice.

## INSTALLATION / CONNECTION

### ▲ Warning

- The unit can only be used with a 12 V DC power supply, negative ground.
- Disconnect the battery's negative terminal before wiring and mounting.
- Do not connect Battery wire (yellow) and Ignition wire (red) to the car chassis or Ground wire (black) to prevent a short circuit.
- Insulate unconnected wires with vinyl tape to prevent a short circuit.
- Be sure to ground this unit to the car's chassis again after installation.

### ▲ Caution

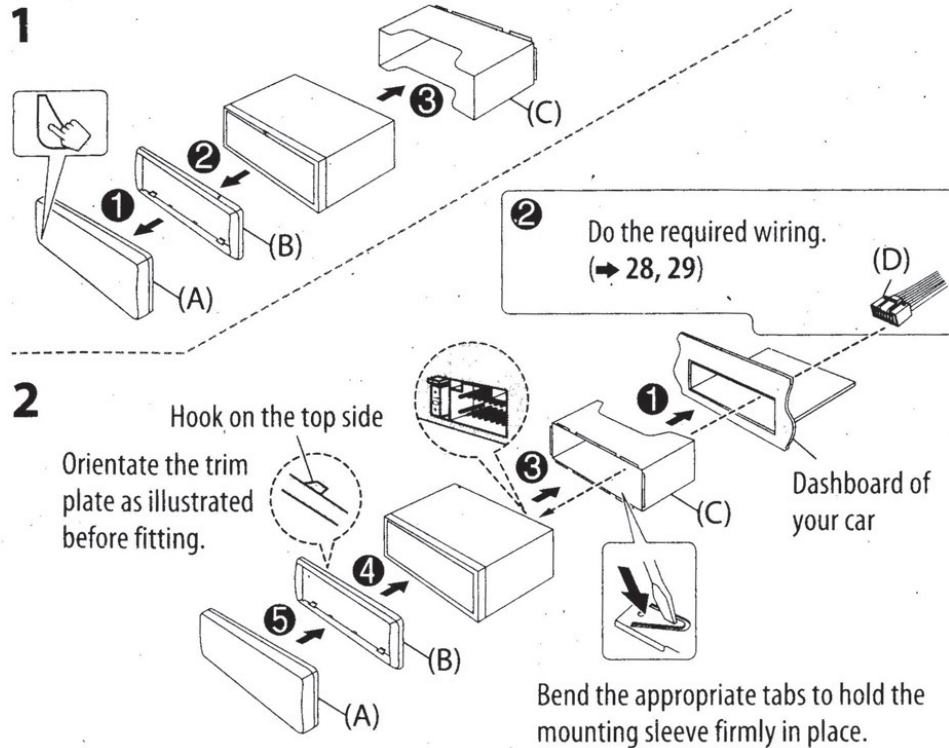
- For safety's sake, leave wiring and mounting to professionals. Consult the car audio dealer.
- Install this unit in the console of your vehicle. Do not touch the metal parts of this unit during and shortly after use of the unit. Metal parts such as the heat sink and enclosure become hot.
- Do not connect the ⊖ wires of speakers to the car chassis or Ground wire (black), or connect them in parallel.
- Mount the unit at an angle of less than 30°.
- If your vehicle wiring harness does not have the ignition terminal, connect Ignition wire (red) to the terminal on the vehicle's fuse box which provides 12 V DC power supply and is turned on and off by the ignition key.
- Keep all cables away from heat dissipate metal parts.
- After the unit is installed, check whether the brake lamps, blinkers, wipers, etc. on the car are working properly.
- If the fuse blows, first make sure the wires are not touching car's chassis, then replace the old fuse with one that has the same rating.

### Basic procedure

- 1 Remove the key from the ignition switch, then disconnect the ⊖ terminal of the car battery.**
- 2 Connect the wires properly.**  
See Wiring connection. (→ 28, 29)
- 3 Install the unit to your car.**  
See Installing the unit (in-dash mounting).
- 4 Connect the ⊖ terminal of the car battery.**
- 5 Reset the unit. (→ 3)**

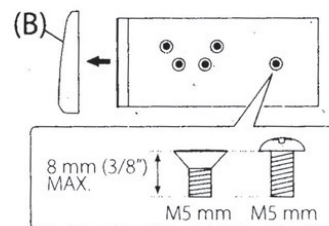
# INSTALLATION / CONNECTION

## Installing the unit (in-dash mounting)



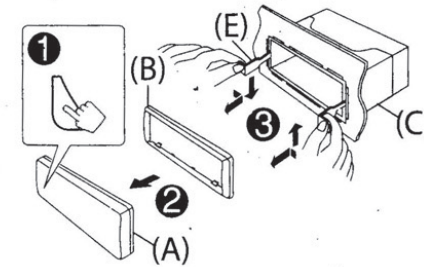
## When installing without the mounting sleeve

- 1 Remove the mounting sleeve and trim plate from the unit.
  - 2 Align the holes in the unit (on both sides) with the vehicle mounting bracket and secure the unit with screws (commercially available).
- ▲ Use only the specified screws. Using wrong screws might damage the unit.



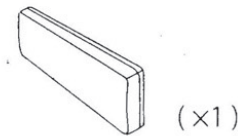
## How to remove the unit

- 1 Detach the faceplate.
- 2 Fit the catch pin on the extraction keys into the holes on both sides of the trim plate, then pull it out.
- 3 Insert the extraction keys deeply into the slots on each side, then follow the arrows as shown below.

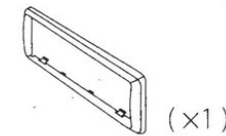


## Part list for installation

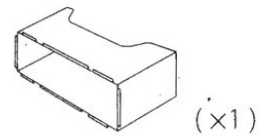
(A) Faceplate



(B) Trim plate



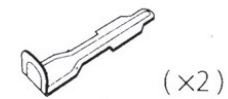
(C) Mounting sleeve



(D) Wiring harness



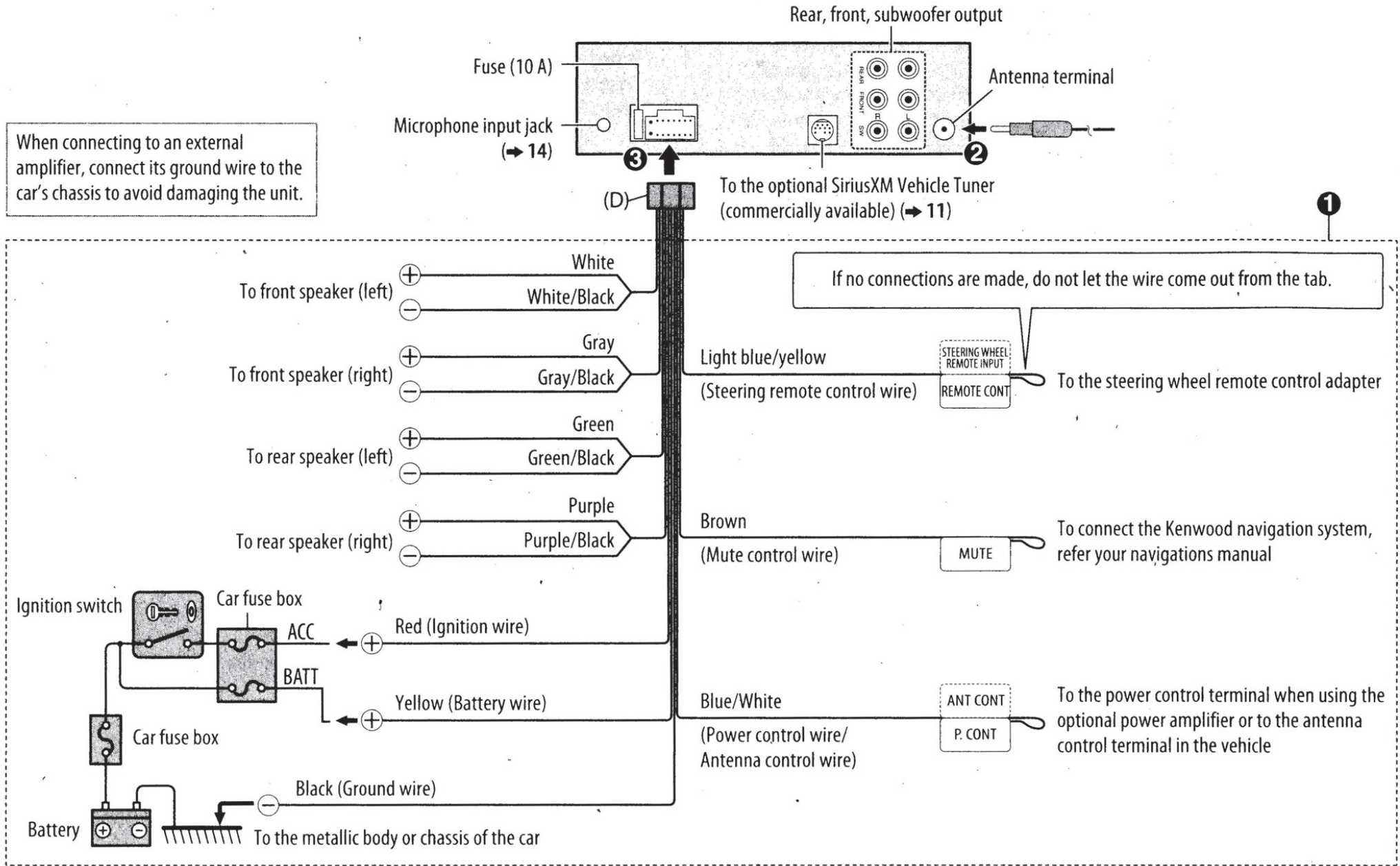
(E) Extraction key



# INSTALLATION / CONNECTION

## Wiring connection (for **KMM-BT312U**)

When connecting to an external amplifier, connect its ground wire to the car's chassis to avoid damaging the unit.

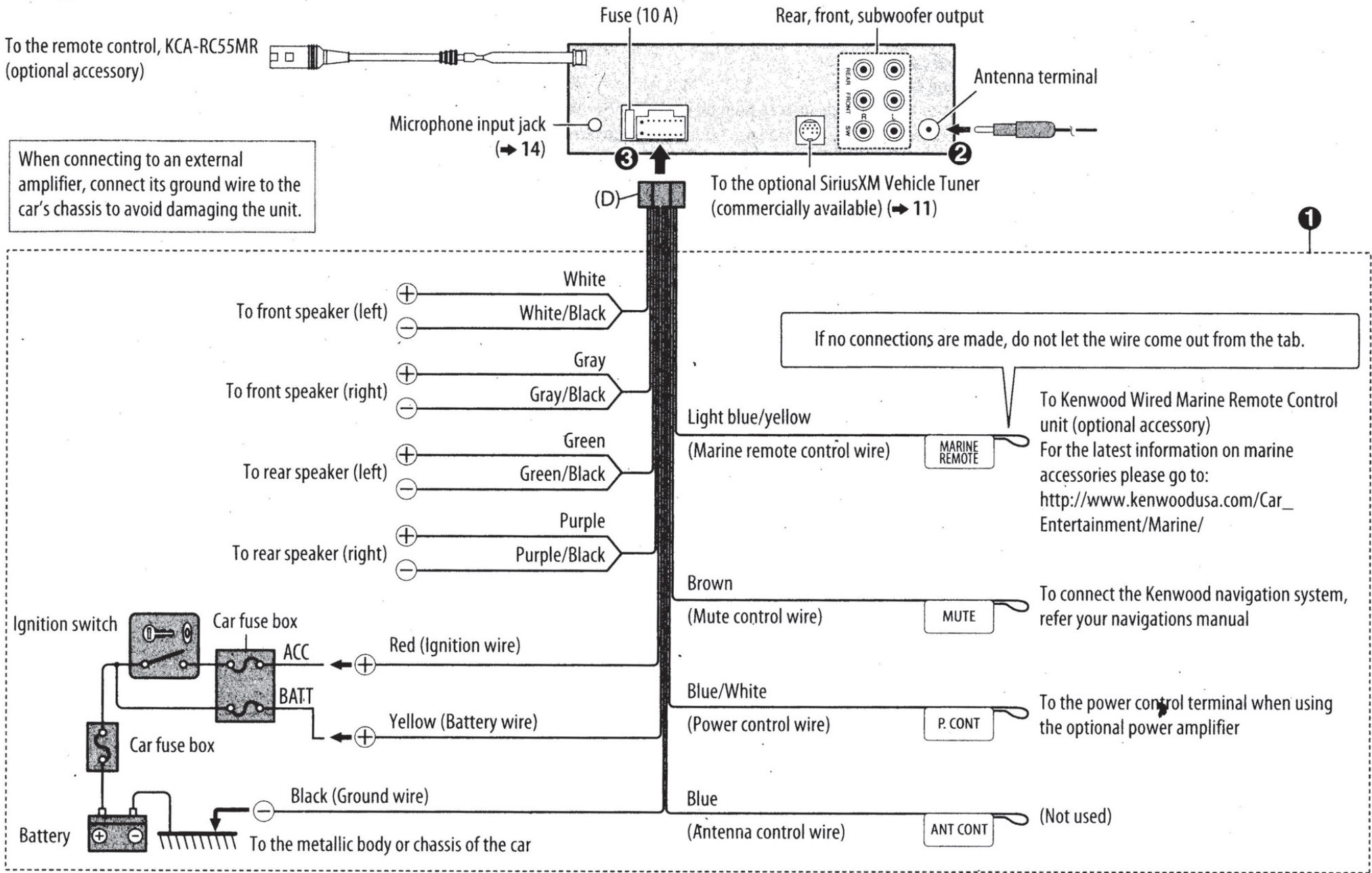


# INSTALLATION / CONNECTION

## Wiring connection (for **KMR-M312BT**)

To the remote control, KCA-RC55MR (optional accessory)

When connecting to an external amplifier, connect its ground wire to the car's chassis to avoid damaging the unit.





- "Made for iPod," and "Made for iPhone" mean that an electronic accessory has been designed to connect specifically to iPod, or iPhone, respectively, and has been certified by the developer to meet Apple performance standards. Apple is not responsible for the operation of this device or its compliance with safety and regulatory standards. Please note that the use of this accessory with iPod or iPhone may affect wireless performance.
- iPhone, iPod, iPod classic, iPod nano, and iPod touch are trademarks of Apple Inc., registered in the U.S. and other countries.
- Lightning is a trademark of Apple Inc.
- Pandora, the Pandora logo, and the Pandora trade dress are trademarks or registered trademarks of Pandora Media, Inc., used with permission.
- iHeartRadio® is a registered mark of Clear Channel Broadcasting, Inc. in the United States and other countries. Such marks are used under license.
- Sirius, XM and all related marks and logos are trademarks of Sirius XM Radio Inc. All rights reserved.
- The "AAC" logo is a trademark of Dolby Laboratories.
- Android is trademark of Google Inc.
- The Bluetooth® word mark and logos are registered trademarks owned by Bluetooth SIG, Inc. and any use of such marks by JVC KENWOOD Corporation is under license. Other trademarks and trade names are those of their respective owners..



## MILITARY

Units purchased through the U.S.A. military exchange service overseas may be serviced under warranty in the continental U.S.A., subject to the following conditions.

- 1) The original warranty is in effect.
- 2) Proof of purchase is provided to the servicer.

### WARRANTY FOR MILITARY MARKET

Kenwood corporation is proud of the quality and workmanship of its audio equipment. This unit has been properly designed, tested and inspected before it was shipped to you. If properly installed and operated in accordance with instructions furnished, it should give you an optimum reliable performance.

### WARRANTY PERIOD

This product is warranted for a period of (1) year from the date of the original purchase.

### SCOPE OF WARRANTY

Except as specified below, this warranty covers all defects in materials and workmanship of the Kenwood brand products.

During the warranty period, any authorized Kenwood Service Center in the military market listed in the back of this warranty card will provide you free-of-charge both parts and labor required to correct any defect in materials or workmanship.

The following are not covered by this warranty.

1. Voltage conversions.
2. Periodic check-ups which do not disclose any defect covered by the warranty.
3. Cabinets, grilles, other exterior finishes, belts, tape heads, and other non-durable parts and accessories.
4. Units on which the serial number has been effaced, modified or removed.
5. Installation and/or removal charges.
6. Damaged magnetic tapes.
7. House call charges for any repairs.
8. Shipping or delivery charges to or from an authorized Kenwood Service Center.
9. This warranty will not cover any failure that is due to any of the following conditions in accordance with the visual inspection of the authorized Kenwood Service Center:
  - \* Improper maintenance or repair, including the installation of parts or accessories that do not conform to the quality and specifications of the original parts.
  - \* Misuse, abuse, neglect, unauthorized product modification or failure to follow instructions contained in the Owner's Manual.
  - \* Accidental or intentional damages.
  - \* Repairs or attempted repairs by an unauthorized agency. (All repairs must be performed at an authorized Kenwood Service Center.)
  - \* Damages or deteriorations caused during shipment (Claims must be presented to the carrier).
  - \* Damages or deteriorations resulting from removal and/or replacement.

### PURCHASER'S RESPONSIBILITIES

As the purchaser of a new Kenwood brand product, you are requested to do the following in order to obtain Kenwood warranty service.

1. Retain your sales slip or other evidence of purchase for proving your eligibility for requesting Kenwood warranty service.
2. Make your unit available to an authorized Kenwood Service Center in the military market for inspection and approved warranty service, or ship your unit in its original carton box or equivalent, fully insured and shipping charges prepaid, to the authorized Kenwood Service Center.

### LIMITATION OF IMPLIED WARRANTIES

Any and all implied warranties, including warranties of merchantability and fitness for a particular purpose, shall be limited in duration to the length of this warranty.

### EXCLUSION OF CERTAIN DAMAGES

KENWOOD's liability for any defective product is limited to the repair or replacement of said product, at our option, and shall not include damages of any kind, whether incidental, consequential or otherwise, except to the extent prohibited by applicable law.

### KENWOOD AUTHORIZED SERVICE CENTERS IN MILITARY MARKET

#### JAPAN:

**Yokota**  
Kenwood Rep.; c/o  
Yokota BX, JAAX AAFES-PAC,  
APO San Francisco 96328

#### Zama

Kenwood Rep.; c/o  
Zama PX, JAAX AAFES-PAC,  
APO San Francisco 96343

#### Misawa

Kenwood Rep.; c/o  
Misawa BX, JAAX AAFES-PAC,  
APO San Francisco 96519

#### Yokosuka

Kenwood Rep.; c/o  
A-33, Yokosuka NEX No. 260-010  
FPO Seattle 98760

#### Atsugi

Kenwood Rep.; c/o  
Atsugi NEX No. 260-020 FPO Seattle  
98767

#### Iwakuni

Kenwood Rep.; c/o  
Marine Corps Exchange, Marine Corps  
Air Station,  
FPO Seattle 98764

#### Sasebo

Sasebo NEX;  
Navy Exchange 260-040  
F.A. Box 115 FPO Seattle 98766

#### Okinawa

Kenwood Rep.; c/o  
OWAX, AAFES-PAC, APO San Francisco  
96230

#### KOREA:

Kenwood Rep.; c/o  
KOAX Repair Shop, AAFES-PAC  
DD-Camp Market, APO San Francisco  
96488

#### GUAM:

Kenwood Rep.; c/o  
Guam NEX No. 230-010,  
FPO San Francisco 96630  
Kenwood Rep.; c/o  
GUAX, AAFES-PAC, APO San Francisco  
96334

#### U.S.A.:

**Hawaii**  
Kenwood Factory Service  
99-994 Iwaena St., Aiea, Hawaii 96701

#### Alaska

Vista Radio TV.;  
861 East Loop Road, Anchorage, Alaska  
99501  
Anchorage Commercial Electronics, Inc.;  
1450 East 9th Ave., Anchorage, Alaska  
99501

#### In The Continental U.S.A.

For Nearest Authorized Service Center;  
Tel: 1-800-536-9663

#### Kenwood Service U.S.A.

Kenwood Factory Service;  
P.O. Box 22745, 2201 East Dominguez  
Street,  
Long Beach, California 90801-5745  
Tel: (310) 639-5300

#### EUROPE:

Please inquire at the military resale  
outlets where you bought your Kenwood  
products, or  
KENWOOD ELECTRONICS  
DEUTSCHLAND GMBH:  
Rembrücker-Str. 15, 63150 Heusenstamm,  
Germany  
Tel.: 49-06104-69010

# KENWOOD

# Warranty Card

Identification du produit  
Modelo do aparelho e numero de série  
Model number & serial number

Revendeur & cachet  
Nome da loja e carimbo  
Dealer & stamp

Date d'achat  
Data da compra  
Purchase date

Nom & adresse du client  
Nome e endereço do cliente  
Name & address of customer

### Attention:

This card and receipt (or invoice) are necessary to purchase a new panel in case of theft or damage.

### Attention:

Vous aurez besoin de cette carte et du reçu (ou de la facture) pour acheter un nouveau panneau en cas de vol ou d'endommagement.

### Atenção:

Em caso de dano ou perda do painel frontal, este Certificado de Garantia e a Nota Fiscal de compra serão requisitados para a aquisição de um novo painel.

© B46-0824-00/01 (K) (12/07)

Dear Customer,

Thank you for purchasing this Kenwood product. As mentioned in the pages of this booklet, our warranty is only valid in the countries listed. If your country is not listed please contact your retailer for information on warranty procedure, or write to:

### JVC KENWOOD Customer Information Center

3-12, Moriyacho, Kanagawa-ku, Yokohama-shi, Kanagawa 221-0022, Japan

**U.S.A. KENWOOD USA CORPORATION**

This warranty will be honored only in the U.S.A.

**KENWOOD LIMITED WARRANTY FOR CAR STEREO COMPONENTS**

**HOW LONG IS THE WARRANTY**

Kenwood U.S.A. Corporation ("Kenwood") warrants this product for a period of one (1) year from the date of original purchase.

**WHAT IS COVERED AND WHAT IS NOT COVERED**

Except as specified below, this warranty covers all defects in material and workmanship in Kenwood car stereo components. The following are not covered by the warranty:

- 1. Any product which is not distributed in the U.S.A. by Kenwood or which is not purchased in the U.S.A. from an authorized Kenwood car stereo dealer or an automobile dealer, unless the product is purchased through the U.S.A. Military Exchange Service.
2. Any product on which the serial number has been defaced, modified or removed.
3. Damage, deterioration or malfunction resulting from:
a. Any shipment of the product (claims must be presented to the carrier).
b. Installation or removal of the product.
c. Accident, acts of nature, misuse, abuse, neglect, unauthorized product modification or failure to follow instructions supplied with the product.
d. Repair or attempted repair by anyone not authorized by Kenwood.
e. Any other cause which does not relate to a product defect.

**WHO IS PROTECTED**

This warranty is enforceable only by the original purchaser.

**WHAT WE WILL PAY FOR**

We will pay for all labor and material expenses for covered items. Payment of shipping charges is discussed in the next section of this warranty.

**HOW TO OBTAIN WARRANTY SERVICE**

If your KENWOOD product ever needs service:

- 1. Take or ship it to any KENWOOD Authorized Service Center in the U.S.A. along with & complete description of the problem. (If you are uncertain as to whether a Service Center is authorized, please call 1-800-KENWOOD for the nearest Service Center. 1-800-536-9663).
2. Although you must pay any shipping charges if it is necessary to ship the product for warranty service, we will pay the return shipping charges if the repairs are covered by the warranty within the United States.
3. Whenever your units are taken or sent for warranty service, you must include a copy of the original dated sales receipt as proof of warranty coverage.

**LIMITATION OF IMPLIED WARRANTIES**

ALL IMPLIED WARRANTIES, INCLUDING WARRANTIES OF MERCHANTABILITY AND FITNESS FOR A PARTICULAR PURPOSE, ARE LIMITED IN DURATION TO THE LENGTH OF THIS WARRANTY.

**EXCLUSION OF DAMAGES**

KENWOOD'S LIABILITY FOR ANY DEFECTIVE PRODUCT IS LIMITED TO THE REPAIR OR REPLACEMENT OF THE PRODUCT AT OUR OPTION. KENWOOD SHALL NOT BE LIABLE FOR:

- 1. INSTALLATION OR REMOVAL CHARGES, DAMAGE TO OTHER PROPERTY CAUSED BY ANY DEFECTS IN KENWOOD CAR STEREO COMPONENTS, DAMAGES BASED UPON INCONVENIENCE, LOSS OF USE OF THE PRODUCT OR
2. ANY OTHER DAMAGES, WHETHER INCIDENTAL, CONSEQUENTIAL OR OTHERWISE.
SOME STATES DO NOT ALLOW LIMITATIONS ON HOW LONG AN IMPLIED WARRANTY LASTS AND/OR DO NOT ALLOW THE EXCLUSION OR LIMITATION OF INCIDENTAL OR CONSEQUENTIAL DAMAGES, SO THE ABOVE LIMITATIONS AND EXCLUSIONS MAY NOT APPLY TO YOU.

This warranty gives you specific legal rights, and you may also have other rights which vary from state to state.

If a problem develops during or after the Limited Warranty Period, or if you have any questions regarding the operation of the product, you should contact your KENWOOD Authorized Dealer or Authorized Service Center. If the problem or your question is not handled to your satisfaction, please contact our Customer Relations Department at the address listed below:

**KENWOOD USA CORPORATION**
**P.O. Box 22745, 2201 East Dominguez**
**Street, Long Beach, CA 90801-5745**
**Tel: (310) 639-5300**

**BRASIL JVC KENWOOD DO BRASIL COMÉRCIO DE ELETRÔNICOS LTDA**

O fabricante garante o produto identificado na Nota Fiscal de venda ao consumidor contra qualquer defeito de fabricação ou de matéria-prima durante o período de garantia. Esta garantia é válida no território brasileiro desde que o produto tenha sido adquirido no Brasil e distribuído pela JVC KENWOOD do Brasil Comércio de Eletrônicos Ltda.

**PERÍODO DE GARANTIA**

Este produto é garantido pelo prazo de 01 (um) ano, incluindo o período estabelecido por lei, a partir da data de aquisição, comprovada mediante a apresentação da respectiva Nota Fiscal de venda ao consumidor final. Eventuais reparos realizados no produto durante o período de garantia não implicam na dilatação do seu prazo.

**EXCLUSÃO DA GARANTIA**

- (a) Produtos com o número de série ou certificado de garantia rasurados, adulterados ou ilegíveis;
(b) Defeitos resultantes de acidentes (quedas, batidas e etc), uso em desacordo com o manual de instruções, má utilização, ligação à fonte de tensão diferente da especificada no Manual de Instruções, modificações não autorizadas;
(c) Danos causados por agentes da natureza (Ex: chuvas, raios, maresia, enchentes e etc);
(d) Defeitos ou danos em decorrência de consertos realizados por pessoas não autorizadas;
(e) Defeitos ou danos resultantes do uso de peças ou dispositivos não conformes às especificações da JVC KENWOOD;
(f) Danos ou deteriorações aos acabamentos externos, partes cosméticas, cabos, chicotes, parafusos de fixação, luvas, alças, bolsas, estojos, adaptadores, antenas, fitas, cabeças gravadoras, CDs ou danos causados por pilhas defeituosas ou com vazamento;
(g) Defeitos ou danos devido ao transporte (reclamações devem ser feitas junto à empresa transportadora);
(h) Qualquer outra causa que não esteja relacionada a defeitos de matéria-prima e de fabricação;
(i) Danos causados por tentativa de roubo ou furto;
(j) Danos causados por uso de CDs de má qualidade;
(k) Danos decorrentes do desgaste natural do produto;
(l) Danos causados por mau uso. (derramamento de líquidos e/ou alimentos, corrosão, oxidação, exposição à umidade ou situações climáticas extremas, riscos ou quedas).

**CONCERTO EM GARANTIA**

É indispensável a apresentação deste Certificado de Garantia devidamente preenchido, acompanhado da respectiva Nota Fiscal de compra do produto, desde que não apresente rasuras ou modificações. O consumidor somente terá direito a estes benefícios, quando o produto for entregue diretamente no balcão de um Serviço Autorizado da JVC KENWOOD.

**O QUE NÃO É COBERTO PELA GARANTIA**

Instalação e remoção do produto, despesas de frete, seguro e embalagem são de responsabilidade do proprietário.

Este produto é destinado exclusivamente ao uso doméstico.

**IMPORTANTE:**

Para qualquer informação sobre seu equipamento JVC KENWOOD, ou para obter o endereço do Serviço Autorizado mais próximo, acesse o site www.kenwood.com.br, ou ligue para a Central de Atendimento JVC KENWOOD – Tel.: +55 (11) 3777-6771 com os dados abaixo preenchidos.

**JVC KENWOOD DO BRASIL COMÉRCIO DE ELETRÔNICOS LTDA**
**Tel: (11) 3777-6771**
**www.kenwood.com.br**

Nome do consumidor: \_\_\_\_\_
Endereço: \_\_\_\_\_ CEP: \_\_\_\_\_
Cidade: \_\_\_\_\_ Estado: \_\_\_\_\_
Telefone: \_\_\_\_\_
Data da compra: \_\_\_\_ / \_\_\_\_ / \_\_\_\_ Nota Fiscal: \_\_\_\_\_

**CANADA KENWOOD ELECTRONICS CANADA INC.**

**KENWOOD WARRANTY**

KENWOOD ELECTRONICS CANADA INC. (hereinafter called "KENWOOD"), gives the following written warranty to the original customer of each new Kenwood product distributed in Canada by KENWOOD and purchased from a dealer authorized by KENWOOD.

KENWOOD warrants that each new Kenwood product, under normal use, is free from any defects, subject to the terms and conditions set forth below. If a defect should occur within the warranty period, repairs will be made free of charge for parts and labour when such defects are determined by KENWOOD or its authorized service centres to be attributable to faulty materials or workmanship at time of manufacture. Please contact KENWOOD to confirm if a dealer or service centre is authorized by KENWOOD.

**WARRANTY PERIOD**

This Kenwood product is warranted for parts and labour for a period of one (1) year from the date of original purchase, lease or rental, except for products which are used in a professional or commercial application, which are warranted for a period of ninety (90) days for parts and labour and are subject to the terms and conditions of the warranty.

**WARRANTY EXCLUSIONS**

This warranty excludes:

- (a) Products purchased in a foreign country or purchased in Canada and taken to a foreign country.
(b) Products purchased from a dealer not authorized by KENWOOD.
(c) Products with the serial number defaced, altered or missing.
(d) Periodic check-ups which do not disclose any defects covered by this warranty.

**GARANTIE KENWOOD**

KENWOOD ELECTRONICS CANADA INC. (ci-après appelée "KENWOOD"), donne par écrit la garantie suivante à l'acheteur original de chaque nouveau produit Kenwood distribué au Canada par KENWOOD et acheté à un concessionnaire autorisé par KENWOOD.

KENWOOD garantit, sous réserve des termes et des conditions énoncés ci-dessous, que chaque nouveau produit Kenwood, dans des conditions d'emploi normales, est exempt de tous défauts. Si l'un défaut se produit pendant la période de garantie, KENWOOD s'engage à assumer le coût des pièces défectueuses et de la main-d'œuvre nécessaires pour effectuer les réparations pourvu que de tels défauts sont attribuables à des pièces défectueuses employées lors de la fabrication du produit Kenwood ou à la main-d'œuvre tel qu'établi par KENWOOD ou par l'un de ses centres de service autorisés. Appelez KENWOOD pour vérifier si un concessionnaire ou un centre de service est autorisé par KENWOOD.

**PÉRIODE DE GARANTIE**

Les pièces et la main-d'œuvre nécessaires pour la réparation des produits Kenwood sont garanties pendant la période d'un (1) an à compter de la date d'achat, de bail ou de location originale, sauf dans les cas où les produits Kenwood sont employés dans un but professionnel ou commercial, où la garantie des pièces et de la main-d'œuvre demeure en vigueur pendant une période de quatre-vingt-dix (90) jours sous réserve des termes et des conditions de la garantie.

**EXCLUSIONS DE GARANTIE**

Cette garantie ne couvre pas:

- (a) les produits achetés à l'étranger ou achetés au Canada et transportés à l'étranger;
(b) les produits achetés à un concessionnaire non autorisé par KENWOOD;
(c) les produits dont le numéro de série manque, a été effacé ou modifié;
(d) les services d'entretien périodiques qui n'indiquent aucun défaut couvert par cette garantie.

- (e) Defects resulting from disaster, accident, abuse, misuse, lightning, power surges, neglect or lack of periodic maintenance, unauthorized modification or failure to follow instructions in the owner's manual.
(f) Defects or damage as a result of repairs performed by a person or party not authorized by KENWOOD.
(g) Defects resulting from the use of parts or devices that do not conform to KENWOOD specifications.
(h) Damage or deterioration occurring to any exterior finishes, cosmetic parts, tape heads, adaptors, antennas, cables, tapes, discs or faults or damage caused by defective or leaking batteries.
(i) Defects or damage occurring during shipping (claims should be presented to the shipping company).
(j) Product voltage and /or line frequency conversions.
(k) Product installation or removal charges.

**TO OBTAIN WARRANTY SERVICE**

Should your Kenwood product require warranty service, deliver it to any authorized KENWOOD service centre and present the original copy of your bill of sale and this warranty card as proof of warranty, or send your product fully insured and freight prepaid to the nearest authorized KENWOOD service centre. To avoid possible shipping damage, make sure the product is properly packed. Include a copy of your original bill of sale and this warranty card as proof of warranty along with your name, home and /or work telephone number(s), a complete return address and a detailed description of the fault(s). Products repaired within warranty will be returned freight prepaid to destinations within Canada. The customer is responsible for all freight and related costs for the return of product(s) to destinations outside Canada.

**ENTIRE WARRANTY**

This warranty constitutes the entire written warranty given by KENWOOD. No person, party, dealer or service centre or their agents or employees are authorized to extend or enlarge this warranty on behalf of KENWOOD by any written or verbal statement or advertisement or promotion, including any extended warranty program or plan that may be offered by the dealer or service centre, unless approved in writing by KENWOOD.

**DISCLAIMER**

KENWOOD disclaims any responsibility for loss of time or use of the product or any other indirect, incidental or consequential damage to other products or goods, inconvenience or commercial loss.

**NOTICE TO CONSUMER**

The provisions contained in this written warranty are not intended to limit, modify, take away, disclaim or exclude any warranties or rights you may have which are set forth in any applicable provincial or federal laws or legislation.

**IMPORTANT**

This warranty card by itself is not considered by KENWOOD as a valid proof of purchase. When applying for warranty repairs, you must present the original copy of your bill of sale and this warranty card as proof of warranty, so we recommend that they be kept in a safe place, should they be required in the future.

**KENWOOD ELECTRONICS CANADA INC.**
**6070 Kestrel Road, Mississauga,**
**Ontario, Canada L5T 1S8**
**Tel.: (905) 670-7211**
**Fax: (905) 670-7248**

**L'ENTIERE GARANTIE**

Cette garantie représente l'entière garantie donnée par écrit par KENWOOD. KENWOOD ne se tient aucunement responsable de toutes extensions ni de toutes augmentations de cette garantie faites ou entreprises par toutes personnes, parties, concessionnaires ou centres de service ou par leurs agents ou employés au nom de KENWOOD au moyen d'affirmations verbales ou écrites, d'annonces ou de promotions, y inclut tous programmes ou plans de garantie étendue que puissent offrir les concessionnaires ou les centres de service, à moins que KENWOOD n'y ait consenti par écrit d'avance.

**RENONCIATION**

KENWOOD renonce à toutes responsabilités de perte de temps, d'emploi du produit, de tous dommages indirects ou accessoires causés à d'autres produits ou biens, de tous inconvénients ou de toutes pertes commerciales.

**AVIS AUX CONSOMMATEURS**

Les stipulations contenues dans la présente garantie écrite n'ont pas pour but de limiter, de modifier, de diminuer, de rejeter ni d'exclure d'autres garanties ni droits énoncés dans n'importe quelles lois ou législations provinciales ou fédérales.

**IMPORTANT**

KENWOOD ne considère pas cette garantie toute seule comme étant une preuve d'achat valide. Lorsqu'on demande du service sous garantie, il faudra présenter la copie originale du contrat de vente aussi bien que cette carte de garantie en tant que preuve de garantie. On recommande de les conserver dans un lieu sûr au cas où elles s'avèreraient nécessaires à l'avenir.

**KENWOOD ELECTRONICS CANADA INC.**
**6070 Kestrel Road, Mississauga,**
**Ontario, Canada L5T 1S8**
**Téléphone: (905) 670-7211**
**Télécopieur: (905) 670-7248**

- (e) les défauts causés par les désastres, les accidents, les abus, les emplois incorrects, les éclairs, les surtensions de courant, les manques de soins ou d'entretiens périodiques, les modifications non autorisées ou les manques de respect du mode d'emploi;
(f) les défauts ou les dommages causés lors de réparations effectuées par une personne ou par une partie non autorisée par KENWOOD;
(g) les défauts causés par l'emploi de pièces ou de dispositifs qui ne se conforment pas aux exigences de KENWOOD;
(h) les finitions extérieures, les pièces cosmétiques, les têtes de bandes, les adaptateurs, les antennes, les câbles, les bandes, les disques endommagés ou déperis, ni les défauts ou dommages causés par des piles défectueuses ou qui fuient;
(i) les défauts ou dommages qui se produisent pendant l'expédition des produits Kenwood (On devrait déposer de telles réclamations auprès des compagnies de transport);
(j) les conversions de tension et/ou de fréquence du produit;
(k) les frais d'installation ou d'enlèvement du produit.

**COMMENT OBTENIR DU SERVICE SOUS GARANTIE**

Au cas où un service sous garantie de votre produit Kenwood s'avère nécessaire, veuillez livrer le produit à n'importe quel centre de service KENWOOD et présenter la copie originale du contrat de vente et cette carte de garantie en tant que preuve de garantie ou veuillez faire parvenir votre produit assuré et port payé au centre de service KENWOOD autorisé le plus proche. Pour éviter toutes possibilités de dommages pendant le transport, veuillez bien emballer le produit. Veuillez inclure une copie du contrat de vente original et cette carte de garantie en tant que preuve de garantie aussi bien que votre nom, numéros de téléphone au poste de travail et/ou au domicile, votre adresse et une description détaillée des défauts. Les produits sous garantie réparés seront retournés port payé aux destinations à l'intérieur du Canada. Le consommateur sera responsable de tous frais de transport et d'autres frais qui s'y rapportent pour faire expédier les produits à destinations à l'extérieur du Canada.

## Free Manuals Download Website

<http://myh66.com>

<http://usermanuals.us>

<http://www.somanuals.com>

<http://www.4manuals.cc>

<http://www.manual-lib.com>

<http://www.404manual.com>

<http://www.luxmanual.com>

<http://aubethermostatmanual.com>

Golf course search by state

<http://golfingnear.com>

Email search by domain

<http://emailbydomain.com>

Auto manuals search

<http://auto.somanuals.com>

TV manuals search

<http://tv.somanuals.com>