

# KENWOOD

COMPACT HIFI SYSTEM

**NV-500**  
**NV-600**

---

## INSTRUCTION MANUAL


KENWOOD CORPORATION

**This instruction manual is used to describe multiple models listed above.  
Model availability and features (functions) may differ depending on the country  
and sales area.**



B60-4290-00 (EN)

# Before applying power

 **Caution : Read this page carefully to ensure safe operation.**

Units are designed for operation as follows.

**U.S.A. and Canada** ..... **AC 120 V only**  
**Australia** ..... **AC 240 V only**

**Europe and U.K.** ..... **AC 230 V only**  
**\*Other countries** ..... **AC 110-120 / 220-240 V switchable**

## For the United Kingdom

### Factory fitted moulded mains plug

1. The mains plug contains a fuse. For replacement, use only a 13-Amp ASTA-approved (BS1362) fuse.
2. The fuse cover must be refitted when replacing the fuse in the moulded plug.
3. Do not cut off the mains plug from this equipment. If the plug fitted is not suitable for the power points in your home or the cable is too short to reach a power point, then obtain an appropriate safety approved extension lead or adapter, or consult your dealer.  
 If nonetheless the mains plug is cut off, remove the fuse and dispose of the plug immediately, to avoid a possible shock hazard by inadvertent connection to the mains supply.

**IMPORTANT:** The wires in the mains lead are coloured in accordance with the following code:

Blue : Neutral  
 Brown : Live

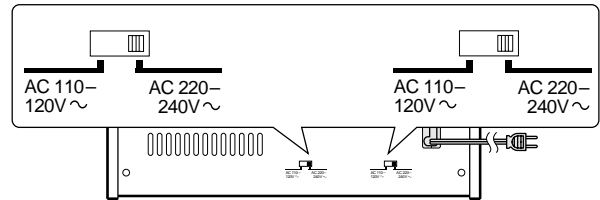
Do not connect those leads to the earth terminal of a three-pin plug.

### \*AC voltage selection

The AC voltage selector switches on the rear panel are set to the voltage that prevails in the area to which the unit is shipped. Before connecting the power cord to your AC outlet, make sure that the setting position of this switch matches your line voltage. If not, it must be set to your voltage in accordance with the following direction.

#### AC voltage selector switch

Move switch levers to match your line voltage with a small screwdriver or other pointed tool.



**Note:**  
 Our warranty does not cover damage caused by excessive line voltage due to improper setting of the AC voltage selector switch.

Preparation section

## Safety precautions

**WARNING :** TO PREVENT FIRE OR ELECTRIC SHOCK, DO NOT EXPOSE THIS APPLIANCE TO RAIN OR MOISTURE.

	<p><b>CAUTION</b>                  RISK OF ELECTRIC SHOCK                  DO NOT OPEN</p>		<p>CAUTION: TO REDUCE THE RISK OF ELECTRIC SHOCK, DO NOT REMOVE COVER (OR BACK). NO USER-SERVICEABLE PARTS INSIDE. REFER SERVICING TO QUALIFIED SERVICE PERSONNEL.</p>
	<p>THE LIGHTNING FLASH WITH ARROWHEAD SYMBOL, WITHIN AN EQUILATERAL TRIANGLE, IS INTENDED TO ALERT THE USER TO THE PRESENCE OF UNINSULATED "DANGEROUS VOLTAGE" WITHIN THE PRODUCT'S ENCLOSURE THAT MAY BE OF SUFFICIENT MAGNITUDE TO CONSTITUTE A RISK OF ELECTRIC SHOCK TO PERSONS.</p>		
	<p>THE EXCLAMATION POINT WITHIN AN EQUILATERAL TRIANGLE IS INTENDED TO ALERT THE USER TO THE PRESENCE OF IMPORTANT OPERATING AND MAINTENANCE (SERVICING) INSTRUCTIONS IN THE LITERATURE ACCOMPANYING THE APPLIANCE.</p>		

### The marking of products using lasers (Except for some areas)

**CLASS 1  
 LASER PRODUCT**

The marking is located on the rear panel and says that the component uses laser beams that have been classified as Class 1. It means that the unit is utilizing laser beams that are of a weaker class. There is no danger of hazardous radiation outside the unit.

Caution : Read the pages marked  carefully to ensure safe operation.

## Contents

### Preparation section

△ Before applying power .....	2
△ Safety precautions .....	2
△ <b>IMPORTANT SAFEGUARDS</b> .....	4
Special features .....	6
In regard to demonstration .....	6
Accessories .....	6
<b>System connection</b> .....	7
AM loop antenna connection .....	7
FM antenna connection .....	7
Connection of the speaker system .....	8
Connection of Other Accessories .....	9
<b>CHANNEL SPACE setting</b> .....	10
<b>Controls and indicators</b> .....	11
<b>Operation of remote control unit</b> .....	12
Basic configuration of the remote control menu .....	13
Selecting an input using the CURSOR key .....	13
<b>Clock adjustment</b> .....	14

### Basic section

<b>Let's put out some sound</b> .....	16
Basic use method .....	16
Receiving broadcast station .....	18
To receive a station that has not been preset .....	19
Collective presetting of stations (auto preset) (Except for Europe and U.K.)	
Presetting R.D.S. stations (RDS auto memory for Europe and U.K. ) .....	20
One-by-one presetting (manual preset) .....	21
Playback of CD .....	22
In regard to CD-TEXT .....	23
Playback of tape .....	24
Selecting Dolby NR .....	25
Selecting the reverse mode .....	25
<b>Let's recording</b> .....	26
Recording on TAPE .....	26
CD synchronized recording .....	27

### Application section

<b>R.D.S. (Radio Data System) (for Europe and U.K.)</b> .....	28
Searching for a desired program type (PTY search) .....	29
To be able to listen to the desired information at any time (EON) .....	30
<b>Playback of CD</b> .....	32
Listening in the desired sequence (program playback) .....	32
Repeated playback .....	34
Listening to an unexpected title sequence (random playback) .....	35
<b>Convenient Recording Methods</b> .....	36
Selection of the Recording Type .....	36
Recording an entire CD onto tape (CD direct recording) .....	37
Recording every desired track in CD onto tape (CD one-track recording) .....	38
Recording desired CD tracks in a desired order onto tape (CD program recording) .....	39
<b>Tone control and sound field effect adjustment</b> .....	40
Adjusting the external input level .....	40
Adjusting the subwoofer output level .....	40
Bass Boost and tone control .....	41
Dolby Virtual setting .....	42
DSP mode setting .....	43
<b>Timer operation</b> .....	44
Setting the O.T.T. .....	44
Setting the timer playback .....	45
Sleep Timer (Sleep) .....	46
Timer recording .....	47
<b>Checking the time information display of CD</b> .....	48
<b>Adjusting the display contrast</b> .....	49
<b>Remote control of external components</b> .....	50

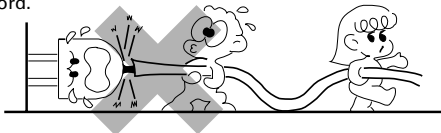
### Knowledge section

<b>Important Items</b> .....	54
Maintenance .....	54
Reference .....	54
Disc handling precautions .....	55
Notes on cassette tape .....	55
<b>In case of difficulty</b> .....	57
<b>INDEX</b> .....	60
<b>Specifications</b> .....	62

Please read all of the safety and operating instructions before operating this appliance. Adhere to all warnings on the appliance and in the instruction manual. Follow all the safety and operating instructions. These safety and operating instructions should be retained for future reference.

- 1. Power sources** – The appliance should be connected to a power supply only of the type described in the instruction manual or as marked on the appliance. If you are not sure of the type of power supply to your home, consult your appliance dealer or local power company. For appliances intended to operate from battery power, or other sources, refer to the instruction manual.
- 2. Power-cord protection** – Power-supply cords should be routed so that they are not likely to be walked on or pinched by items placed upon or against them, pay particular attention to cords at plugs, convenience receptacles, and the point where they exit from the appliance.

Never pull or stretch the cord.

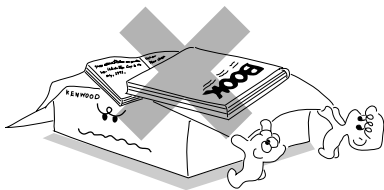


- 3. CAUTION – Polarization** – This appliance may be equipped with a polarized alternating-current line plug (a plug having one blade wider than the other). This plug will fit into the power outlet only one way. This is a safety feature. If you are unable to insert the plug fully into the outlet, try reversing the plug. If the plug should still fail to fit, contact your electrician to replace your obsolete outlet. Do not defeat the safety purpose of the polarized plug.

- 4. Ventilation** – Slots and openings in the cabinet are provided for ventilation and to ensure reliable operation of the appliance and to protect it from overheating, and these openings must not be blocked or covered. The appliance should be situated so that its location or position does not interfere with its proper ventilation.

To maintain good ventilation, do not put records or a tablecloth on the appliance. Place the appliance at least 10 cm away from the walls.

Do not use the appliance on a bed, sofa, rug or similar surface that may block the ventilation openings. This appliance should not be placed in a built-in installation such as a bookcase or rack unless proper ventilation is provided or the manufacturer's instructions have been adhered to.

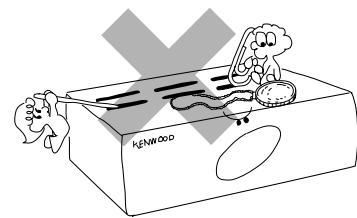


- 5. Water and moisture** – The appliance should not be used near water - for example, near a bathtub, washbowl, kitchen sink, laundry tub, in a wet basement, or near a swimming pool, etc.

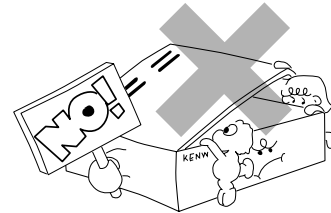
- 6. Temperature** – The appliance may not function properly if used at extremely low, or freezing temperatures. The ideal ambient temperature is above +5°C (41°F).

- 7. Heat** – The appliance should be situated away from heat sources such as radiators, heat registers, stoves, or other appliances (including amplifiers) that produce heat.

- 8. Electric shock** – Care should be taken so that objects do not fall and liquid is not spilled into the enclosure through openings. If a metal objects, such as a hair pin or a needle, comes into contact with the inside of this appliance, a dangerous electric shock may result. For families with children, never permit children to put anything, especially metal, inside this appliance.



- 9. Enclosure removal** – Never remove the enclosure. If the internal parts are touched accidentally, a serious electric shock might occur.



- 10. Magnetic fields** – Keep the appliance away from sources of magnetic fields such as TV sets, speaker systems, radios, motorized toys or magnetized objects.

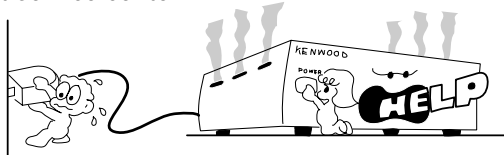
- 11. Cleaning** – Unplug this appliance from the wall outlet before cleaning. Do not use volatile solvents such as alcohol, paint thinner, gasoline, or benzene, etc. to clean the cabinet. Use a clean dry cloth.

- 12. Accessories** – Do not place this appliance on an unstable cart, stand, tripod, bracket, or table. The appliance may fall, causing serious injury to a child or adult, and serious damage to the appliance. Use only with a cart, stand, tripod, bracket, or table recommended by the manufacturer, or sold with the appliance. Any mounting of the appliance should follow the manufacturer's instructions, and should use a mounting accessory recommended by the manufacturer. An appliance and cart combination should be moved with care. Quick stops, excessive force, and uneven surfaces may cause the appliance and cart combination to overturn.



**13. Lightning** – For added protection for this appliance during a lightning storm, or when it is left unattended and unused for long periods of time, unplug it from the wall outlet and disconnect the antenna or cable system. This will prevent damage to the appliance due to lightning and power-line surges.

**14. Abnormal smell** – If an abnormal smell or smoke is detected, immediately turn the power OFF and unplug the appliance from the wall outlet. Contact your dealer or nearest service center.

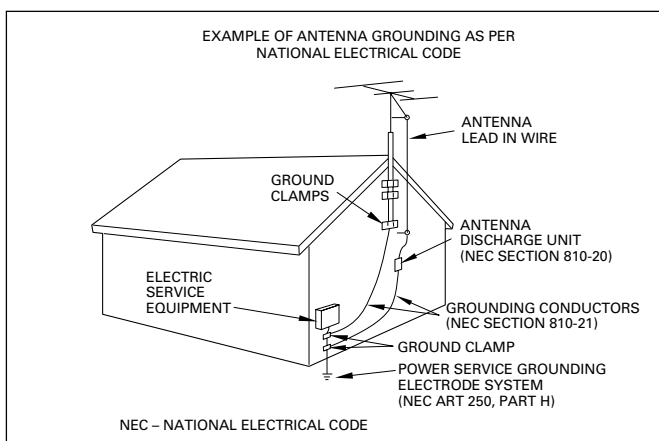


**15. Damage requiring service** – The appliance should be serviced by qualified service personnel when:

- A.** The power-supply cord or the plug has been damaged.
- B.** Objects have fallen, or liquid has been spilled into the appliance.
- C.** The appliance has been exposed to rain or water.
- D.** The appliance does not appear to operate normally by following the instruction manual. Adjust only those controls that are covered by the instruction manual as an improper adjustment of other controls may result in damage and will often require extensive work by a qualified technician to restore the appliance to its normal operation.
- E.** The appliance has been dropped, or the enclosure damaged.
- F.** The appliance exhibits a marked change in performance.

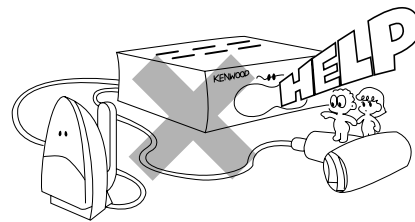
**16. Servicing** – The user should not attempt to service the appliance beyond that described in the instruction manual. All other servicing should be referred to qualified service personnel.

**17. Outdoor antenna grounding** – If an outside antenna is connected to the appliance, be sure the antenna system is grounded so as to provide some protection against voltage surges and built up static charges. Article 810 of the National Electrical Code ANSI/NFPA 70, provides information with respect to proper grounding of the mast and supporting structure, grounding of the lead-in wire to an antenna discharge unit, size of grounding conductors, location of antenna discharge unit, connection to grounding electrodes, and requirements for the grounding electrode. See Figure.



**18. Power lines** – An outside antenna system should not be located in the vicinity of overhead power lines or other electric light or power circuits, or where it can fall into such power lines or circuits. When installing an outside antenna system, extreme care should be taken to keep from touching such power lines or circuits as contact with them might be fatal.

**19. AC outlets** – Do not connect other audio equipment with a power consumption larger than that specified to the AC outlet on the rear panel. Never connect other electrical appliances, such as an iron or toaster, to it to prevent fire or electric shock.



**20. Overloading** – Do not overload wall outlets, extension cords, or integral convenience receptacles as this can result in a risk of fire or electric shock.

**21. Attachment** – Do not use attachments not recommended by the appliance manufacturer as they may cause hazards.

**22. Replacement parts** – When replacement parts are required, be sure the service technician has used replacement parts specified by the manufacturer or have the same characteristics as the original parts. Unauthorized substitutions may result in fire, electric shock, or other hazards.

**23. Safety check** – Upon completion of any service or repairs to this appliance, ask the service technician to perform safety checks to determine that the appliance is in proper operating condition.

**Notes:**

- 1. Item 3 is not required except for grounded or polarized equipment.
- 2. Item 17 and 18 are not required except for units provided with antenna terminals.
- 3. Item 17 complies with UL in the U.S.A.

## Special features

### Bidirectional remote control unit with play mode display at hand

The bidirectional remote uses a large-sized display for easy-to-see, simple operations.

### Dolby Virtual Surround

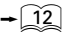
The Dolby Virtual Surround function provides realistic surround effect through only two loudspeakers.

### High output power with large headroom

High, 100 W + 100 W power amplifier enables powerful musical reproduction. (NV-500)

#### In regard to demonstration

This unit is equipped with a demonstration function (only display). The demonstration consists of sequential change of display and indicators showing the operations, but the audio itself does not change. The demonstration function can be cancelled as follows.

Leave the remote control unit attached to the main unit during operation. 

- The setting is remembered even when the power is switched off.
- This operates automatically when a power failure has occurred or the plug of the power cable has been pulled while the power was ON. Cancellation is possible by pressing the key during the demonstration.

#### To switch over the demonstration:



Switch power ON before the following operation.

#### To cancel the demonstration mode:

Press the **CONFIRM/DEMO** key.

#### To start the demonstration mode:

Press and hold the **CONFIRM/DEMO** key for about 2 seconds.

### Unpacking

Unpack the unit carefully and make sure that all accessories are put aside so they will not be lost.

Examine the unit for any possibility of shipping damage. If your unit is damaged or fails to operate, notify your dealer immediately. If your unit was shipped to you directly, notify the shipping company without delay. Only the consignee (the person or company receiving the unit) can file a claim against the carrier for shipping damage.

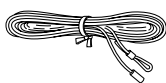
We recommend that you retain the original carton and packing materials for use should you transport or ship the unit in the future.

Keep this manual handy for future reference.

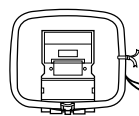
#### Accessories

Please confirm that the following accessories are present.

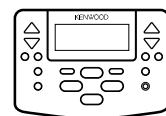
FM indoor antenna (1)



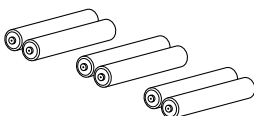
Loop antenna (1)



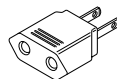
Remote control unit (1)



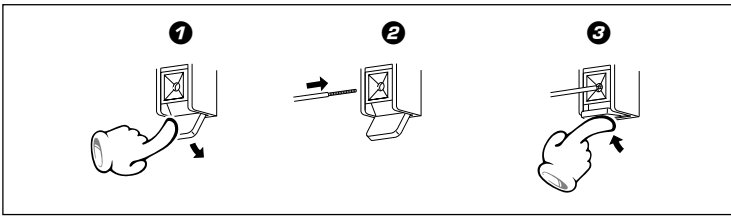
Batteries (R6/AA) (6)



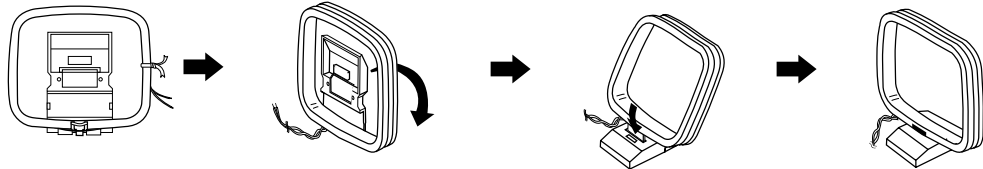
\*AC plug adaptor (1)



\*Use to adapt the plug on the power cord to the shape of the wall outlet. (Accessory only for regions where use is necessary.)

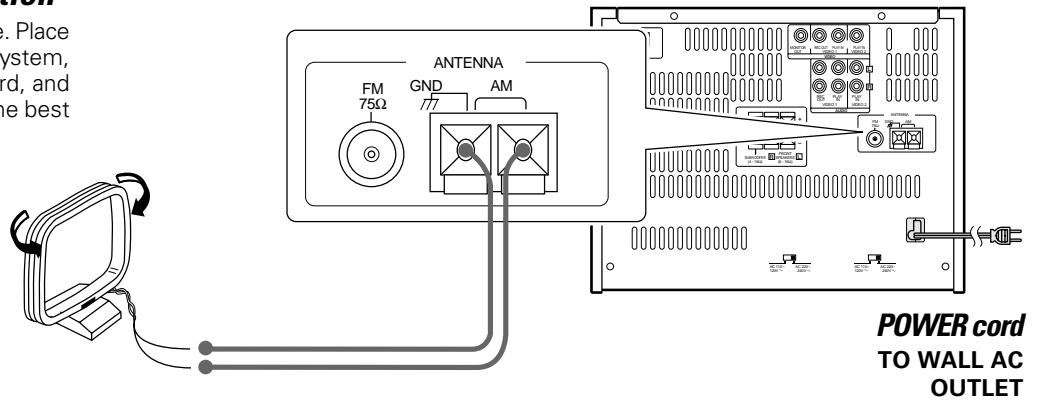


## AM loop antenna connection



### AM loop antenna connection

The supplied antenna is for indoor use. Place it as far as possible from the main system, TV set, speaker cords and power cord, and set it to a direction which provides the best reception.



Preparation section

## FM antenna connection

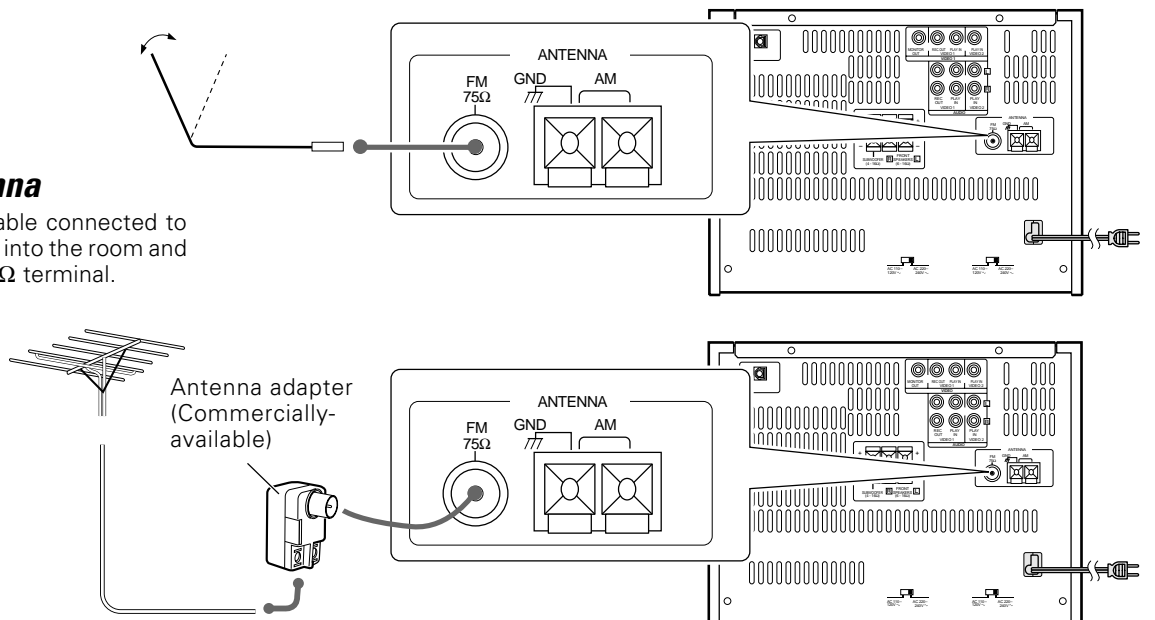
### FM indoor antenna connection

The accessory antenna is for temporary indoor use only. For stable signal reception we recommend using an outdoor antenna. Remove the indoor antenna if you connect one outdoors.

- ❶ Connect to the antenna terminal.
- ❷ Locate the position providing good reception condition.
- ❸ Fix the antenna.

### FM outdoor antenna

Lead the 75Ω coaxial cable connected to the FM outdoor antenna into the room and connect it to the FM 75Ω terminal.



Do not plug the power cord into the power outlet until all of the required connections have been made.

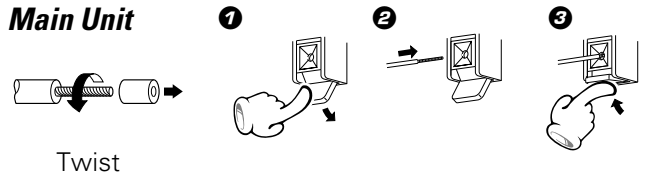
### Malfunction of microcomputer

If operation is not possible or erroneous display appears even though all connections have been made properly, re-set the microcomputer referring to "In case of difficulty".

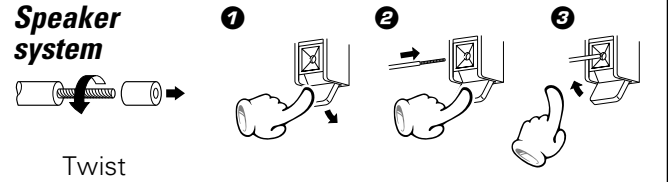
- 57

## Connection of the speaker system

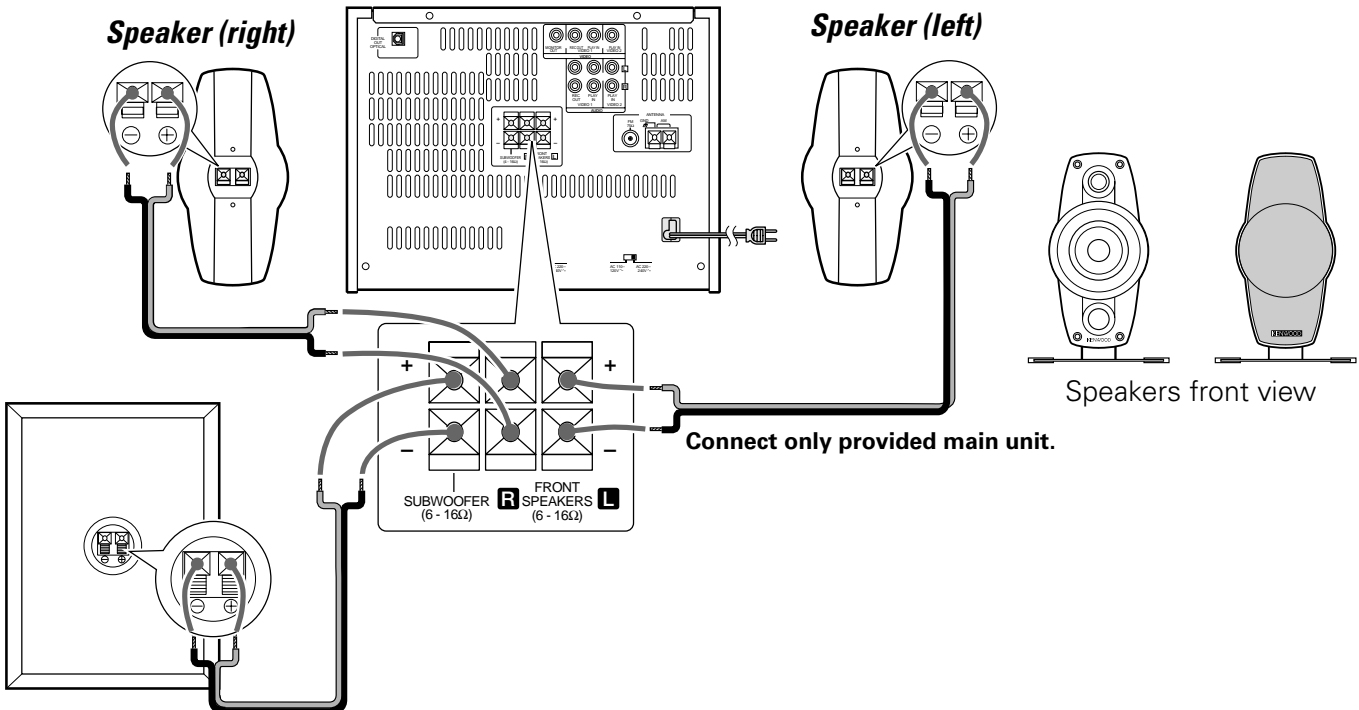
### Main Unit



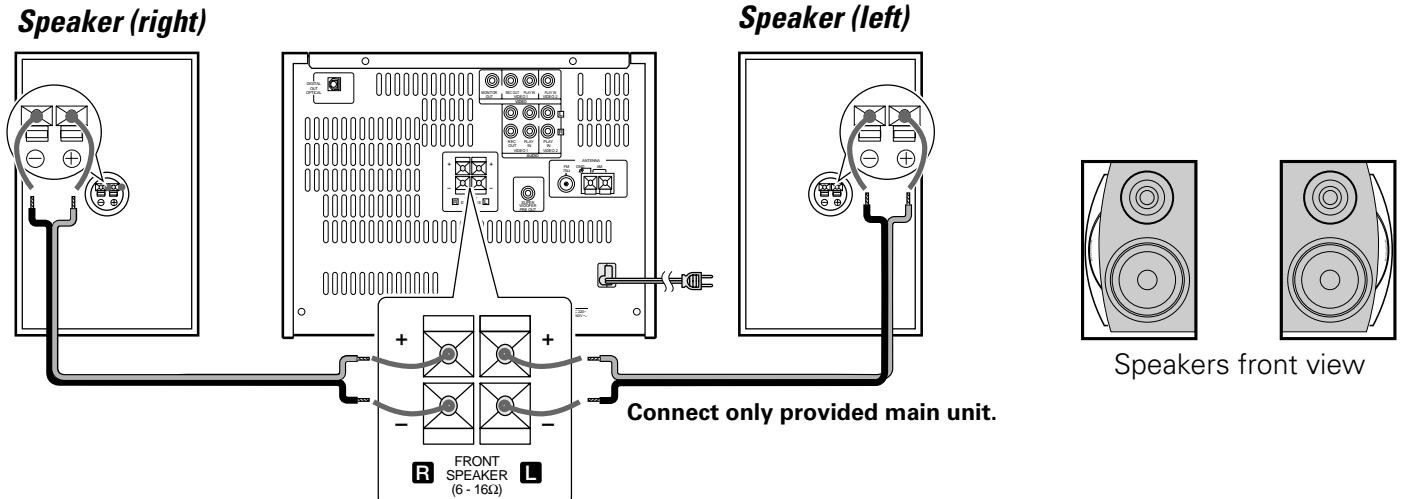
### Speaker system



### NV-600



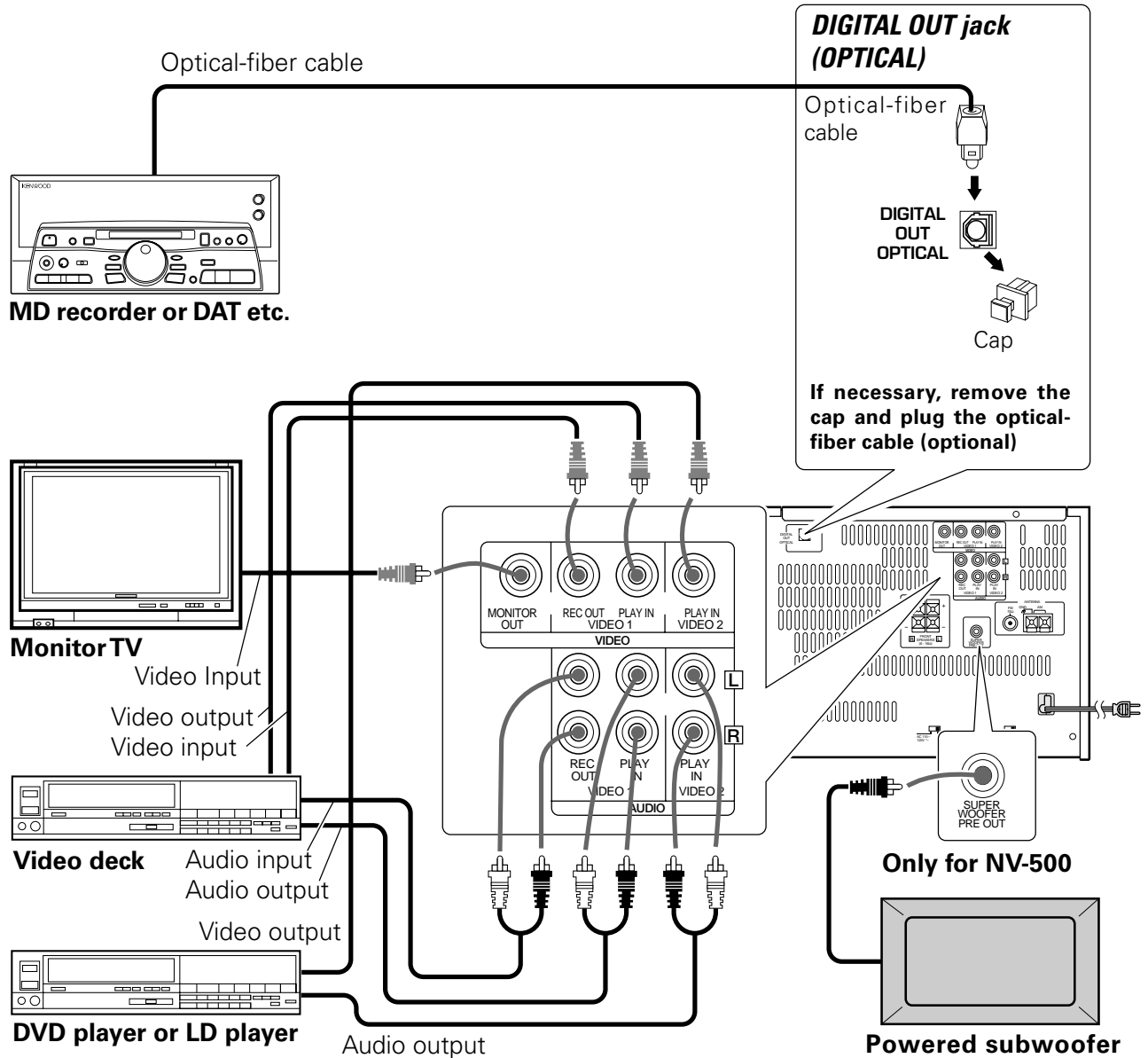
### NV-500



- Never short-circuit the + and - speaker cords.
- If the left and right speakers are connected inversely or if the speaker cords are connected with reversed polarity, the sound becomes unnatural with ambiguous acoustic image positioning. Be sure to connect the speakers and speaker cords correctly.



## Connection of Other Accessories (Commercially Available Parts)



Preparation section

### For U.S.A. and Canada

#### CAUTION

Be sure to adhere followings. Or proper ventilation will be blocked causing damage or fire hazard.

- Do not place any objects impairing heat radiation onto the top of unit.

### For other countries

#### CAUTION

Be sure to adhere followings. Or proper ventilation will be blocked causing damage or fire hazard.

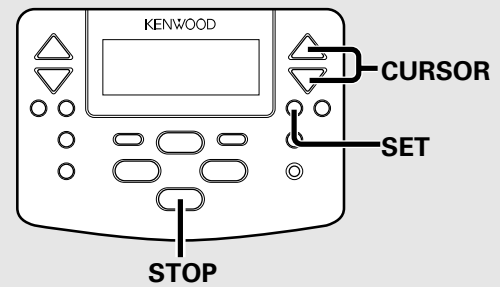
- Do not place any objects impairing heat radiation onto the top of unit.
- Leave a space around the unit (from the largest outside dimension including projection) equal or greater than, shown below.

Back panel : 10 cm

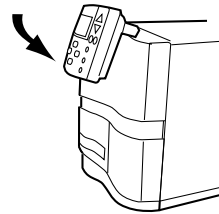
# CHANNEL SPACE setting *(Except for the U.S.A., Canada, U.K., Europe and Australia)*

The space between radio channels has been set to the one that prevails in the area to which the system is shipped. However, if the current channel space setting does not match the setting in the area where the system is to be used, for instance when you move from area 1 or area 2 shown in the following table or vice versa, proper reception of AM/FM broadcasts cannot be expected. In this case, change the channel space setting in accordance with your area by referring to the following table.

Area	CHANNEL SPACE freq.
1 USA, Canada and South American countries	FM : 100 kHz AM : 10 kHz
2 Other countries	FM : 50 kHz AM : 9 kHz



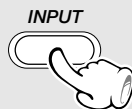
## ① Attach the remote control unit to the main unit



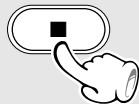
## ② Switching the power ON



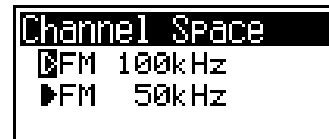
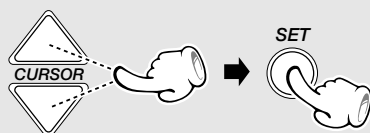
## ③ Select the TUNER input.



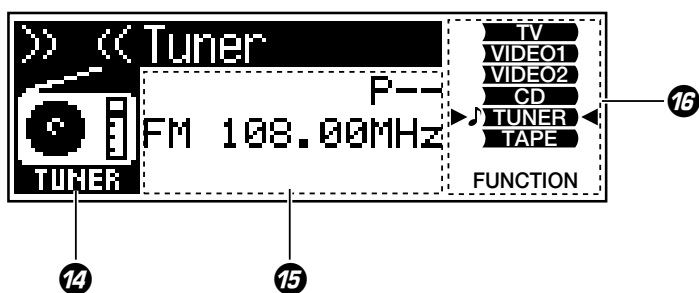
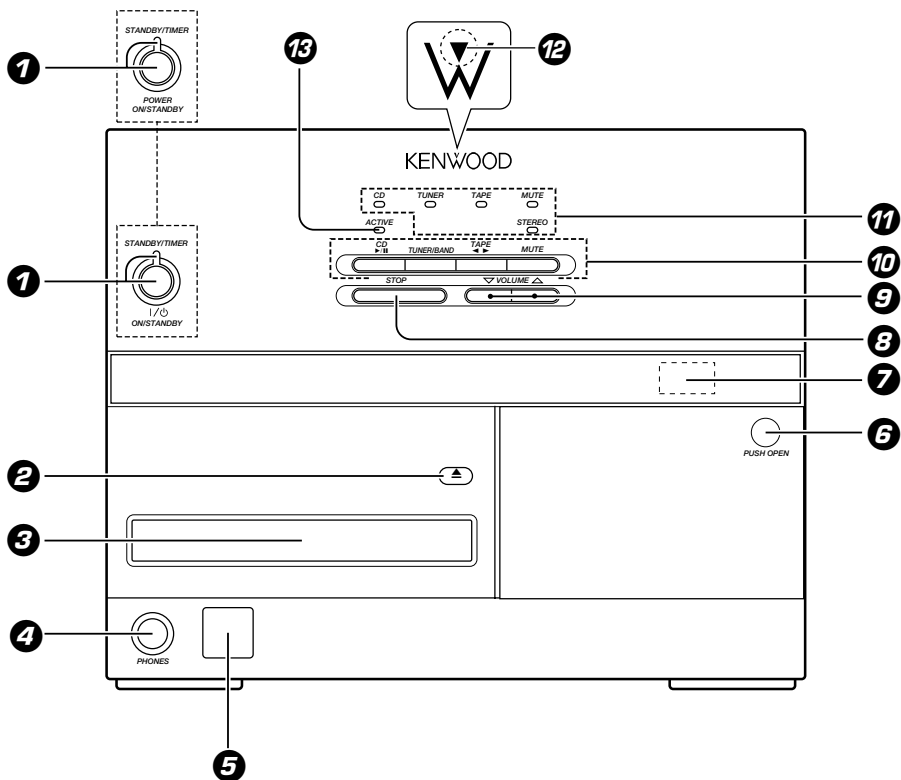
## ④ Press and hold the STOP (■) key for about 2 seconds.



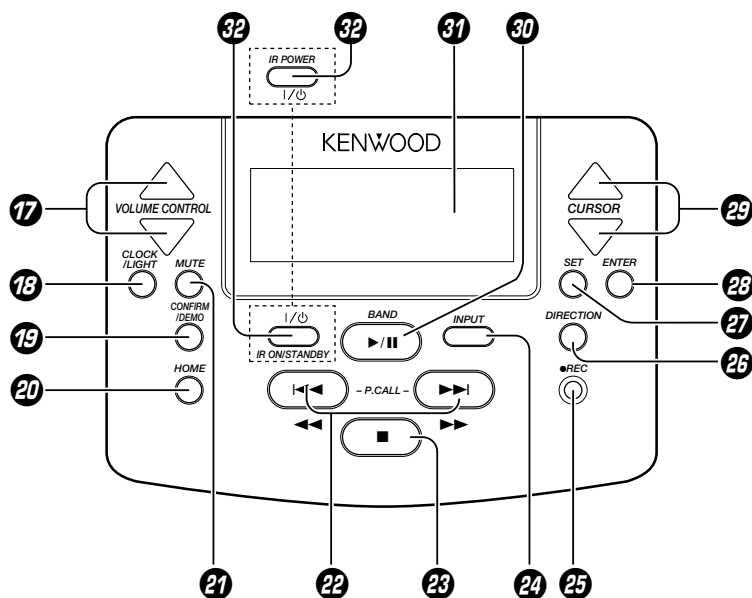
## ⑤ Select the message to be displayed, "FM 100kHz" or "FM 50kHz".



- The setting is remembered even when the power is switched off.



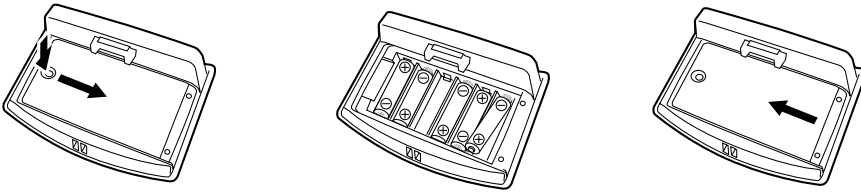
\*The displayed information is variable depending on areas.



- 1 POWER/ON/STANDBY key - 14  
(for U.S.A and CANADA)  
ON/STANDBY (I/O) key - 14  
(for other countries)  
STANDBY/TIMER indicator - 17
  - 2 (CD) open/close (▲) key - 22
  - 3 CD tray - 22
  - 4 PHONES jack - 17
  - 5 Remote control sensor - 12
  - 6 Cassette holder - 24  
Press the area marked "PUSH OPEN" to load or eject a tape.
  - 7 Remote control signal transmitter - 12
  - 8 STOP key - 23
  - 9 VOLUME keys - 16
  - 10 Input selector keys - 16  
MUTE key - 17
  - 11 Input indicators
  - 12 Communication indicator  
Blinks during communication with the remote control unit.
  - 13 ACTIVE indicator  
Lights during CD, MD or tape playback or tuner reception.
- 
- 14 Selector display/icon  
Shows the operations selected with the remote control.
  - 15 Menu/recording, editing selection display  
Shows the selection menu, type of recording or editing, etc.
  - 16 Input selection display  
Shows the status selected on the main unit or the input function selected with the remote control unit.
- 
- 17 VOLUME CONTROL keys - 16
  - 18 CLOCK/LIGHT key - 14
  - 19 CONFIRM/DEMO key - 13
  - 20 HOME key - 13
  - 21 MUTE key - 17
  - 22 P.CALL/◀▶ keys - 14 - 18
  - 23 Stop (■) key - 22
  - 24 INPUT key - 23
  - 25 ● REC key - 27
  - 26 DIRECTION key - 24
  - 27 SET key - 13
  - 28 ENTER key - 32
  - 29 CURSOR keys - 13
  - 30 ▶/II/BAND key - 18
  - 31 Display
  - 32 IR POWER (I/O) key - 13  
(for U.S.A and CANADA)  
IR ON/STANDBY (I/O) key - 13  
(for other countries)

## Loading batteries

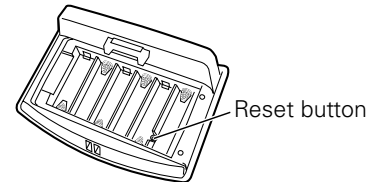
- ① Remove the cover.    ② Insert batteries.    ③ Close the cover.



- Insert six R6 ("AA"-size) batteries following the polarity indications.

## To reset the remote control unit

The remote control unit may malfunction due to strong external noise, etc. In this case, remove all batteries and push the reset button with a thin-tipped object. This resets the microcomputer to the initial condition.



## Operation

After plugging the power cord of this unit, press the I/⏻ key of the remote control unit to turn the system ON. When the system is turned ON, press the key of the function to be operated.

**When the remote control unit is attached to the main unit, the power can be switched ON/OFF only using the POWER (I/⏻) key on the main unit.**

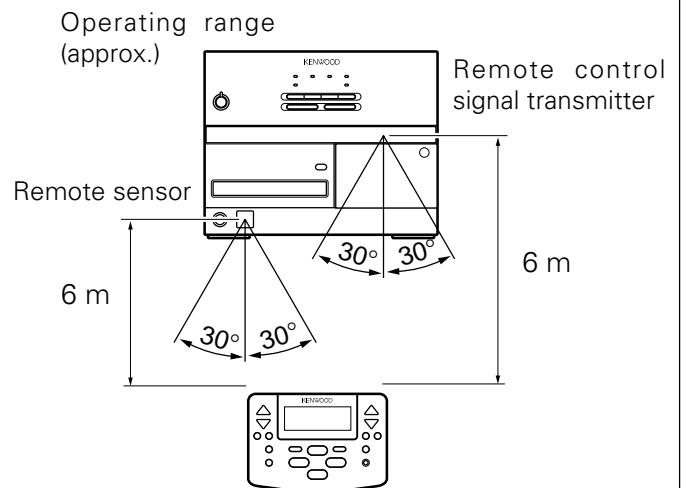
- When pressing more than one remote control keys successively, press the keys securely by leaving an interval of 1 second or more between keys.

### To light the back light:

(The back light is permanently on when the remote control unit is attached to the main unit with power on.)

**Press and hold the CLOCK/LIGHT key for about 2 seconds.**

When the remote control unit is detached from the main unit, it is recommended to leave the display back light off in normal condition in order to save the battery power.



Model : GRC-NV501 (for U.S.A. and Canada)  
 Model : GRC-NV502 (for Europe and U.K.)  
 Model : GRC-NV503 (for other countries)  
 Infrared ray system

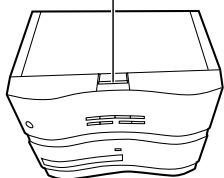


1. The provided batteries are intended for use in operation checking, and their service life may be short.
2. When the batteries are nearly exhausted, "Low Battery" appears and the remote controllable distance decreases. In this case, replace all of the 6 batteries with new ones. (It is recommended to replace batteries with alkaline batteries.)
3. If direct sunlight or the light of a high-frequency fluorescent lamp (inverter type, etc.) is incident to the remote sensor, malfunction may occur. In such a case, change the installation position to avoid malfunction.

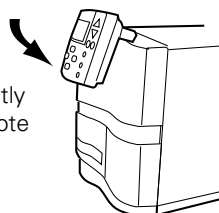
## Attaching/detaching the remote control unit

- ① Open the terminal block cover of the main unit.    ② To attach the remote control unit to the main unit:    ③ To detach the remote control unit from the main unit:

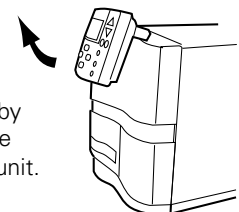
Terminal block cover



Attach by slightly tilting the remote control unit.



Remove in the upper direction by slightly tilting the remote control unit.



- Do not touch the terminals.

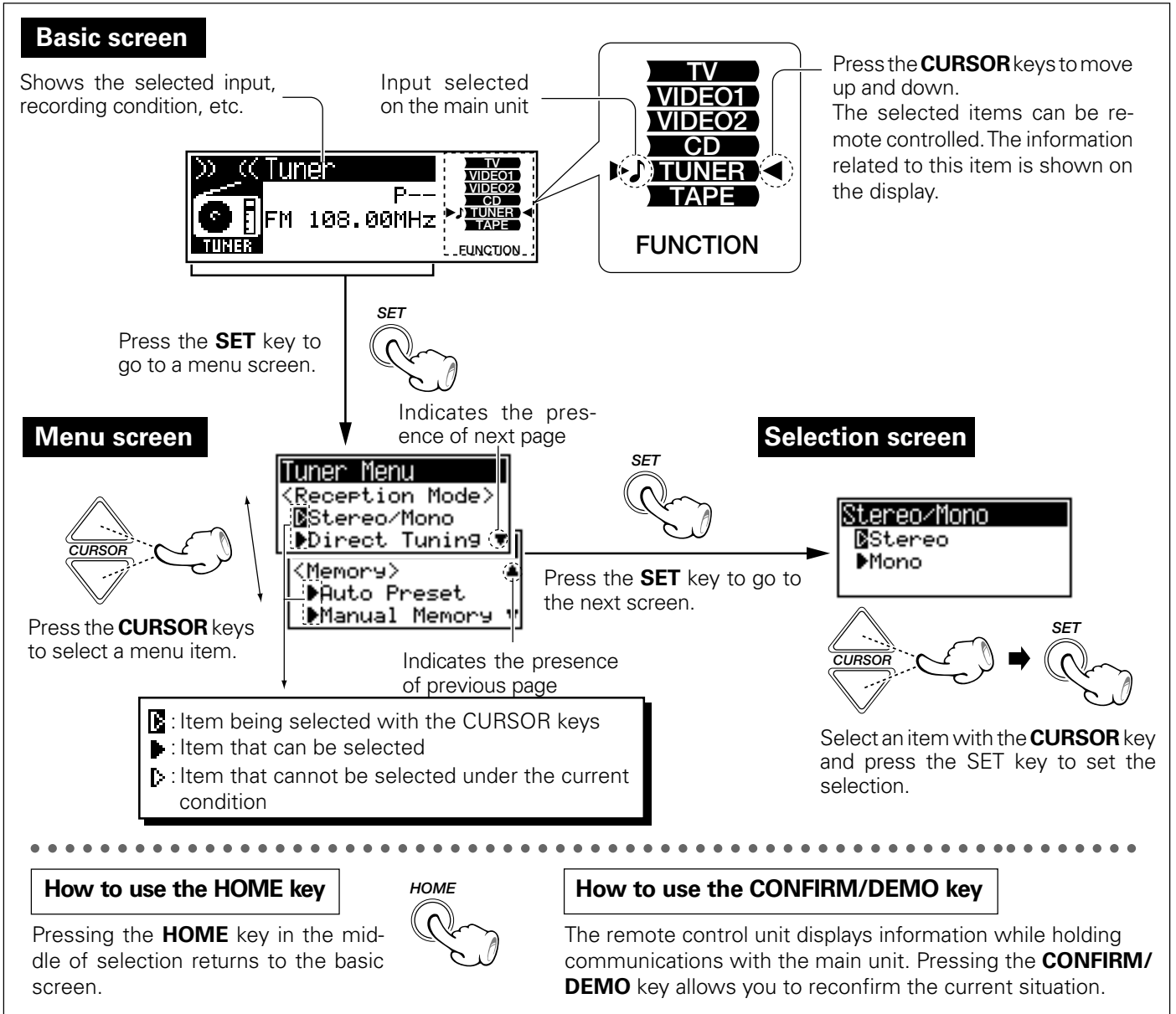
- Be sure to close the cover when the remote control unit is detached.

## Basic configuration of the remote control menu

### Screen configuration

(Example when selecting the stereo mode of the tuner)

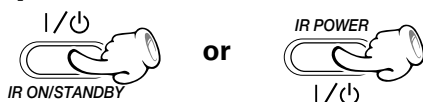
The provided remote control unit has a large LCD screen to allow interactive remote control operation. A variety of operations can be remote controlled by performing selection in the menu screens.



### Selecting an input using the CURSOR key

It is usually the **INPUT** key that is used to select an input such as CD, TAPE or TUNER from the remote control unit. However, the input to be recorded can also be selected using the **CURSOR** keys. Use the **CURSOR** key as described below.

#### 1 Switch power ON.



#### 2 Press one of the CURSOR keys to select an input.



#### 3 Press the SET key to set the selection.



#### 4 Press the BAND key.

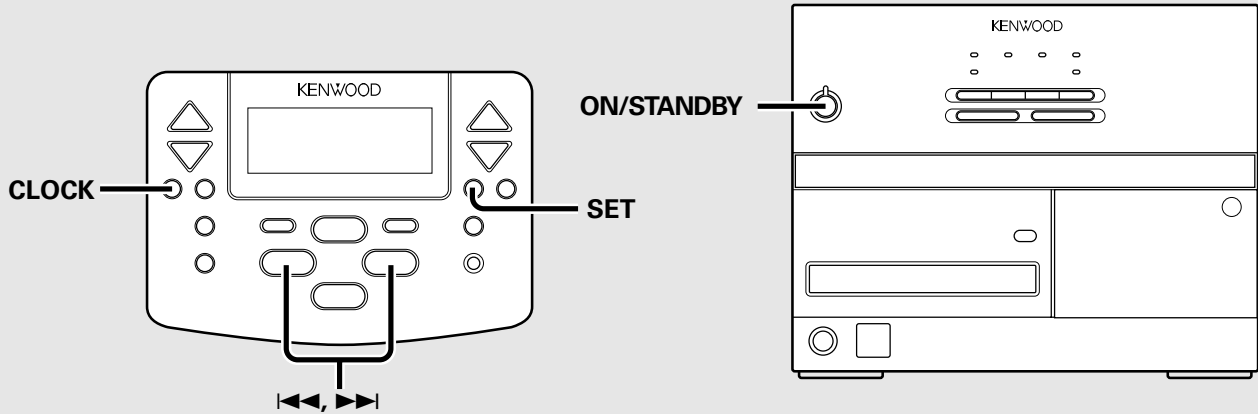
(The input is switched as selected and the source starts to play.)



After plugging the AC cord into a power outlet, set the time of the day as described below.



Adjust the clock before setting the timer.



STANDBY/TIMER



### 1. Switch power ON.

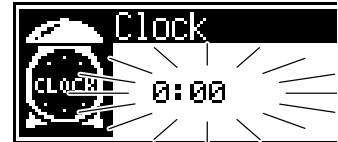
If a CD or cassette has been loaded in the unit, simply pressing the play key turns power ON and starts playback automatically. To stop the playback, press the ■ key.

CLOCK /LIGHT



### 2. Display the Clock display.

- In other areas than the UK, Europe and Australia, the clock shows the time of the day in the 12-hour system.
- The previous display will reappear if no operation is performed for about 5 seconds.

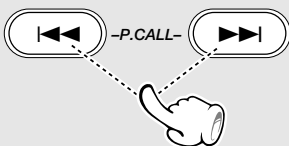


SET



### 3. Display the Clock Adjust screen.

The displayed time of the day blinks when the clock has not been adjusted.



### 4. Adjust the time.



SET



### 5. Set the time.

After setting the correct time of the day, press the SET key.

**To display the time**

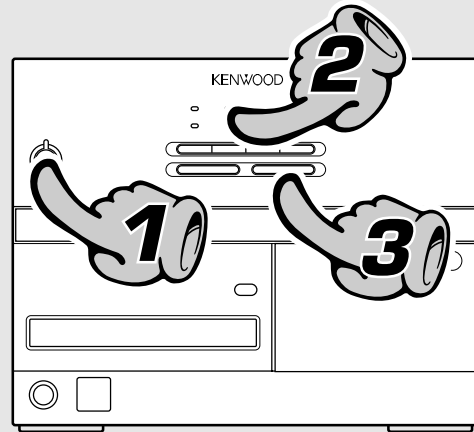
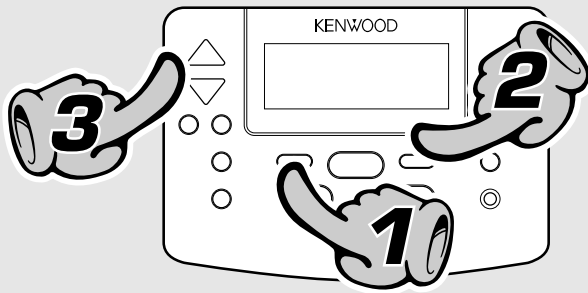
CLOCK /LIGHT



Press the **CLOCK/LIGHT** key. The LCD display shows the time for about 5 seconds then returns to the previous display.



## Basic use method

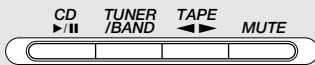


STANDBY/TIMER



### 1. Switch power ON.

If a CD or cassette has been loaded in the unit, simply pressing the play key (▶/||) turns power ON and starts playback automatically.



### 2. Select the desired source.

- If CD or TAPE is selected and a disc or tape has already been loaded in the main unit, its playback starts now.

The volume decreases

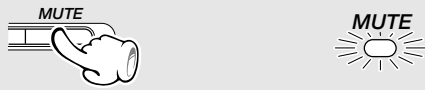
The volume increases

### 3. Volume adjustment.





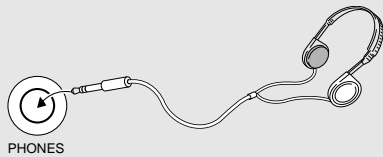
### Muting the sound temporarily



- Press again to resume the original volume.
- This is also cancelled when the volume is changed.

### Listening through headphones

Insert the headphone plug into the "PHONES" jack.



- Headphones with a stereo mini plug can be connected.
- The sounds from all speakers are cut off.

### One-touch operation

With this feature, when the play key for the CD or TAPE input or the BAND key for the TUNER input is pressed, the power of the unit is switched ON automatically.

- When the CD or TAPE input selected while a disc or tape has already been loaded, its playback also starts automatically.

### STANDBY/TIMER indicator

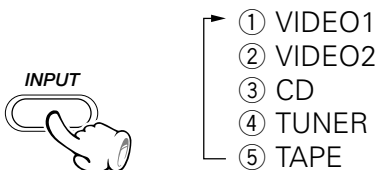
- When power is **STANDBY** : Lights in red.
- When power is **ON** : Lights in green.
- During timer standby : Lights in amber.
- When timer standby is initiated without setting the current time of the day : Blinks in green.
- When the protection circuitry is activated : Blinks in red. (In this case, unplug the power cord and ensure that the speaker cords are not short-circuited.)

### Standby mode

While the standby indicator of the unit is lit in red or amber, a small amount of current is flowing into the unit's internal circuitry to back up the memory. This condition is referred to as the standby mode of the unit. While the unit is in the standby mode, it can be turned ON from the remote control unit.

When using the remote control unit, each press of the **INPUT** key switches the input as shown below.

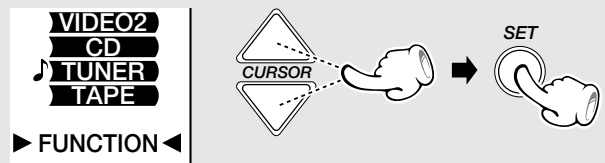
#### 1 Press INPUT key



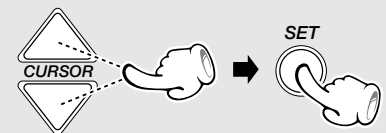
#### 2 Press ►/II(BAND) key

### Adjusting the left and right volume balance

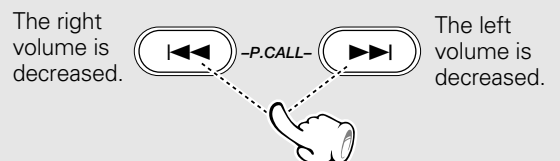
#### 1 Display the "Function" menu.



#### 2 Select "Balance".



#### 3 Adjusting the left and right volume balance

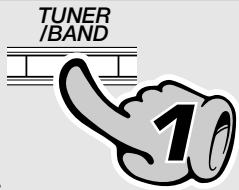
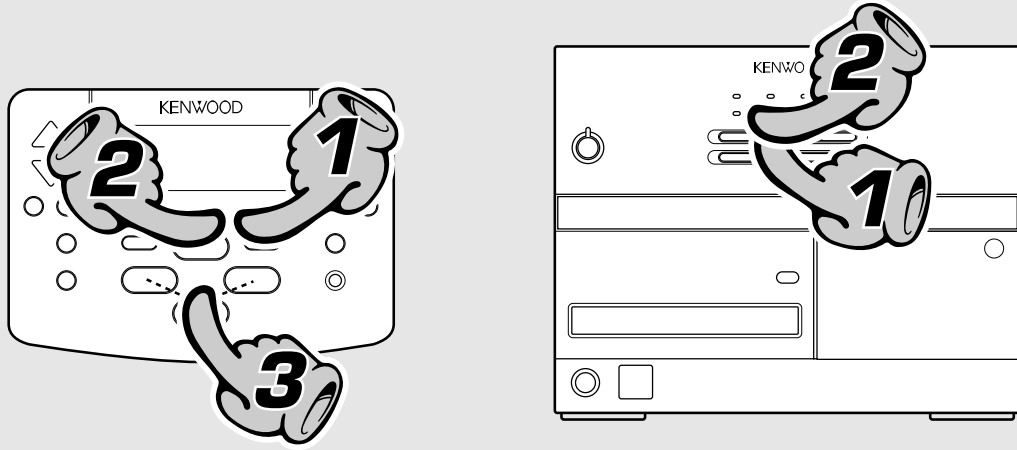


#### 4 Set the adjusted balance.



When the display of the remote control unit shows nothing, information can be displayed by pressing the **HOME** key.

# Receiving broadcast station



Main unit

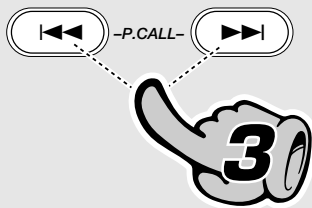
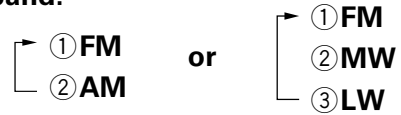
**1. Select the TUNER input.**



Main unit

**2. Select the broadcast band.**

Each press changes the band.



Remote control only

**3. Select a station.**

It is recommended to preset radio stations in advance.

Every time the key (|◀◀ or ▶▶|) is pressed, the preset stations are switched over as follows.

Press ▶▶| for the order of 1→2→3 ... 38→39→40→1...

Press |◀◀ for the order of 40→39→38 ... 3→2→1→40...

When the key is held depressed for more than 2 seconds... ➔

Seek of preset stations starts and stops automatically when a station is detected.

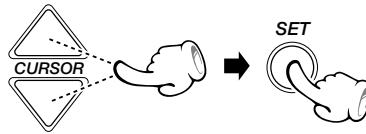
### Switching between stereo tuning and monaural tuning

Use the monaural tuning mode when the radio wave is weak and noisy.

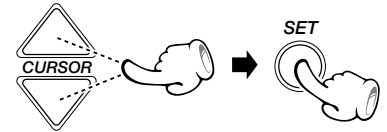
**①** With the **TUNER** input selected, press the **SET** key to display the Tuner menu.



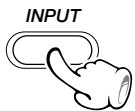
**②** Select "**Stereo/Mono**".



**③** Select "**Stereo**" or "**Mono**" and press the **SET** key to set the selection.



### Remote control



- ① VIDEO1
- ② VIDEO2
- ③ CD
- ④ TUNER
- ⑤ TAPE

### Remote control

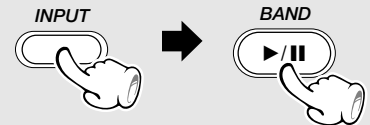


preset number display

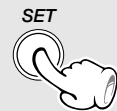
Frequency display

### To receive a station that has not been preset

**①** Select the **TUNER** input and the receiving band.

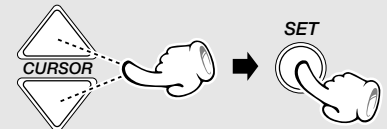


**②** Press the **SET** key to display the Tuner menu.



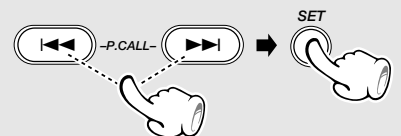
**③** Select the "**Direct Tuning**"

Select with the **CURSOR** key and press the **SET** key.



**④** Select the receiving frequency.

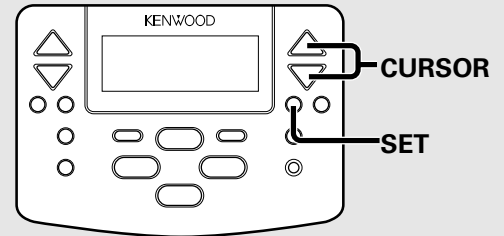
Select the frequency with one of the **P.CALL** keys and press the **SET** key to set the selection.



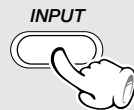
## Collective presetting of stations (auto preset) (Except for Europe and U.K.)

### Presetting R.D.S. stations (RDS auto memory for Europe and U.K.)

A maximum of 40 stations will be preset.  
When there are many stations and the intended station has not been preset, please also use "One-by-one presetting (manual preset)".



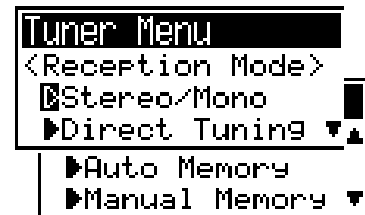
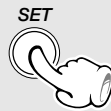
#### ① Select the TUNER input.



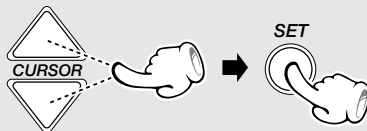
- ① VIDEO1
- ② VIDEO2
- ③ CD
- ④ TUNER
- ⑤ TAPE



#### ② Display the "Tuner" menu.



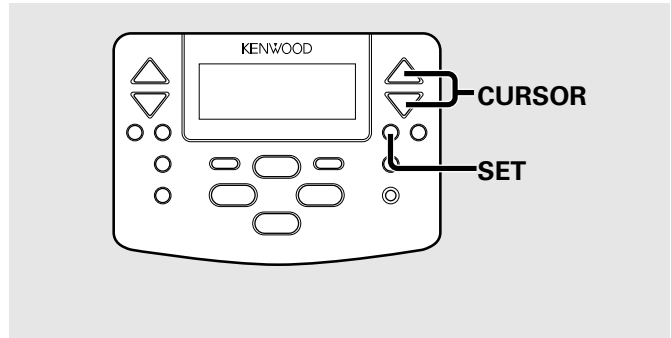
#### ③ Select "Auto Preset" or "Auto Memory".



- The displayed information is variable depending on areas.
- It takes a certain period of time before presetting completes.

## One-by-one presetting (manual preset)

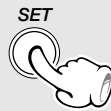
Desired radio stations can be selected and preset one by one. (Up to 40 stations can be preset in memory.)



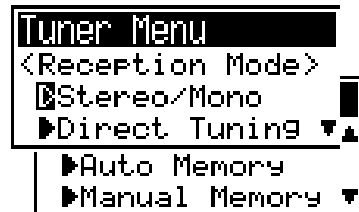
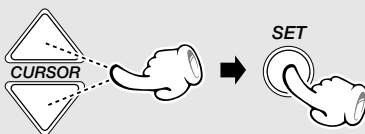
- 1 Receive a desired station in advance. ("To receive a station that has not been preset")



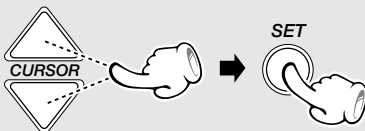
- 2 With the TUNER input selected, press the SET key to display the Tuner menu.



- 3 Select "Manual Memory" with the CURSOR key and press the SET key.



- 4 Select one of preset numbers 1 to 40.



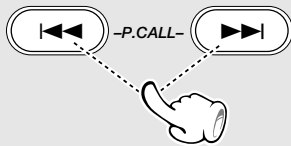
To preset another station, repeat steps 1 to 4 above.



## Skipping tracks

To skip backward

To skip forward

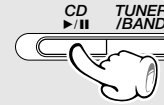


- The track in the direction of the key pressed is skipped, and the selected track will be played from the beginning.
- When the key is pressed once during playback, the track being played will be played from the beginning.

### When a key is held depressed:

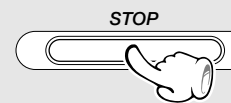
- The track is fast forwarded or reversed.
- Normal playback resumes from the position where the key is released.

## To pause playback



- Each press pauses and plays the CD alternately.

## To stop playback



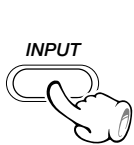
## To eject the disc



- The CD tray opens.

## Remote control operation...

- 1 Press the INPUT key to select the CD input.



- 1 VIDEO1
- 2 VIDEO2
- 3 CD
- 4 TUNER
- 5 TAPE

- 2 Press (BAND) key



### In regard to CD-TEXT

When discs conforming to CD-TEXT are played with this unit, the text information recorded on the CD (disc name or titles) is displayed automatically.

- |                  |   |
|------------------|---|
| During stop:     | The disc title is displayed.                      |
| During playback: | The title of the track being played is displayed. |

```

Track No. 01
KENWOOD HI
0:01
  
```

CD-TEXT display

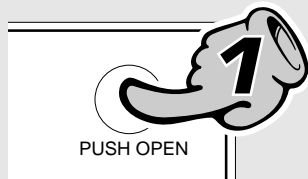
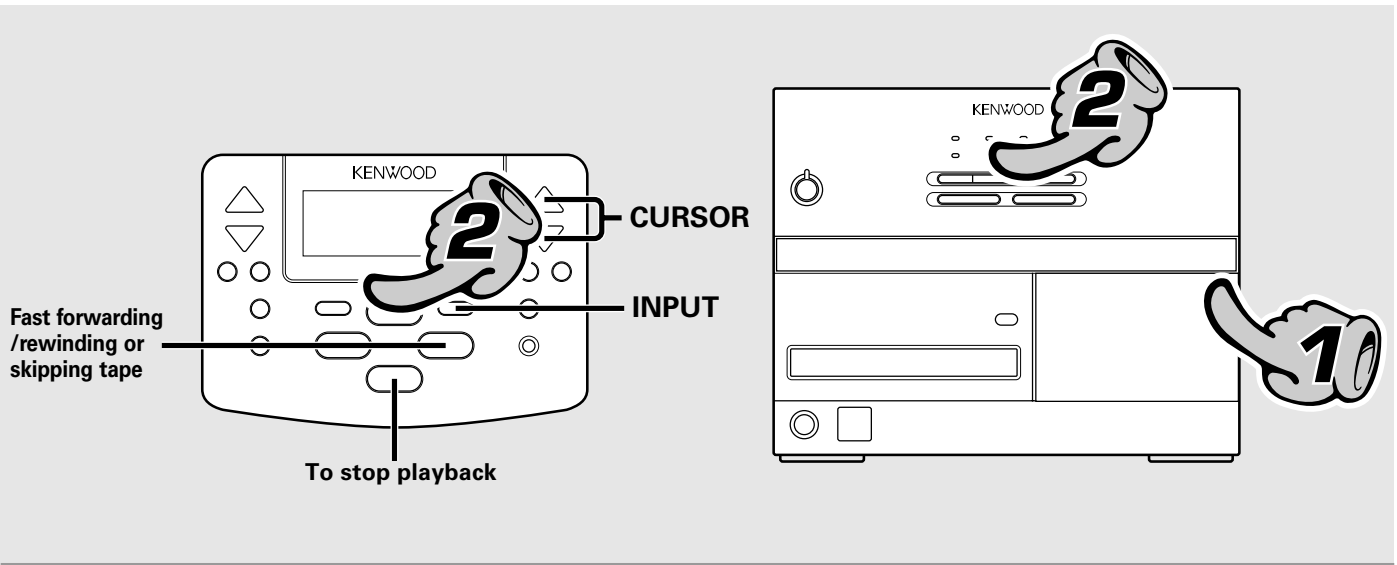
When the remote control unit is attached to the main unit: Characters are scrolled (moved) from the right to the left.

When the remote control unit is detached from the main unit: Only the first 10 characters are displayed.

## Playback of tape



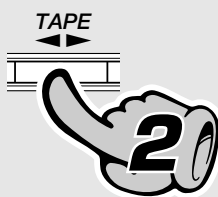
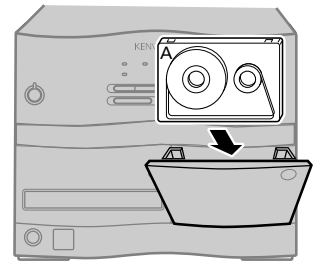
If you load a tape in the cassette deck in advance while the power is off, pressing the TAPE key turns power on automatically and starts the tape playback.



### 1. Load a cassette tape.

- ① Open the cassette holder.
- ② Insert a tape and close the cassette holder

- Be sure to remove tape slack.
- Be sure to close the cassette holder completely.
- The normal (TYPE I), High (TYPE II) or Metal (TYPE IV) tape types are detected and set automatically.



### 2. Start playback.

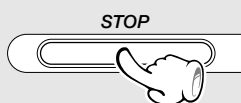
During playback, the tape running direction changes each time the key is pressed.

#### Note on the tape transport direction

The direction in which tape advances when playback or recording is started automatically by the one-touch operation feature, etc. is indicated by an indicator. The indicated tape direction is that used when the tape was stopped last. (To switch the direction, press the **DIRECTION** key on the remote control unit.)



### To stop playback



- Do not take out the cassette tape until the tape transport has stopped completely.

#### A tip for use of the tape counter

The tape counter is set to "0000" when a cassette tape is loaded. By writing down the counter reading in case you want to interrupt recording (playback) in the middle of the tape, the memo will be helpful as a reference for locating the same position when continuing the recording (playback) the next time. The tape counter figure decrements during recording or playback of the back side (while the < tape transport indicator is lit).

To set the tape counter to "0000", open the cassette holder once. Then the counter will be reset.

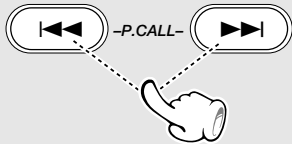


### Fast forwarding/rewinding or skipping tape

By leaving non-recorded blanks of 4 seconds or more between each piece of music, desired piece of music can be selected by skipping others (up to 16 in each of the backward and forward directions).

To rewind tape or skip music in direction ←

To fast forward tape or skip music in direction →



#### When the key is pressed during stop

- Fast forwarding or rewinding starts.
- Press the stop key (■) to stop fast forwarding or rewinding.

#### When the key is pressed during play

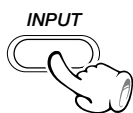
- Skipping of music starts.

### Caution for cassette tape ejection

- Do not attempt to eject the cassette tape until the tape has been stopped completely by pressing the stop (■) key. Opening the cassette holder while the mechanism is running may lead to malfunction. Should it become impossible to close the cassette holder, turn power off then on again.

### Remote control operation...

- 1 Press the INPUT key to select the TAPE input.



- ① VIDEO1
- ② VIDEO2
- ③ CD
- ④ TUNER
- ⑤ TAPE

- 2 Press ►/|| (BAND) key.



Displayed when Dolby NR is selected  
Reverse mode indicator



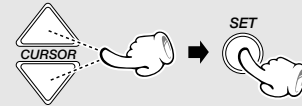
tape transport direction indicator

When the remote control unit is attached to the main unit: **Tape counter**  
When it is detached from the main unit: **"Stop" for stop, "Play" for playback.**

### Selecting Dolby NR

Using the Dolby NR in recording allows you to reduce tape hiss noise. Be sure to set "Dolby NR" on when playing back a tape recorded with Dolby NR.

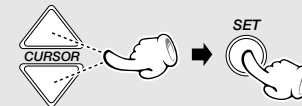
- 1 Select "TAPE" with the CURSOR key.



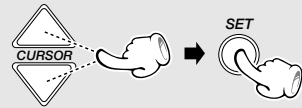
- 2 Display the "TAPE" menu.



- 3 Select the "Dolby NR" setting mode.



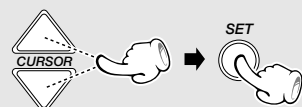
- 4 Select "On" or "Off" and press the SET key.



### Selecting the reverse mode

The reverse mode determines the mode of automatic reversal of tape at the end of each side.

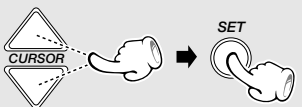
- 1 Select "TAPE" with the CURSOR key.



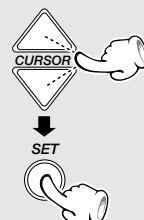
- 2 Display the "TAPE" menu.



- 3 Select the "Direction" setting mode.



- 4 Select one of the following reverse modes and press the SET key.

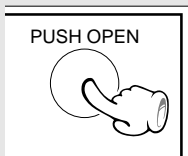
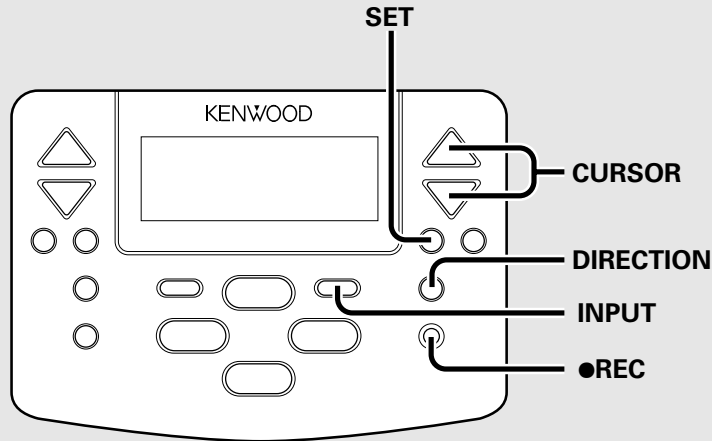


- ① " [ ] ": Playback stops after having played one side of tape.
- ② " [ ] ": Playback stops after having played both sides of tape in a deck.
- ③ " [ ] ": Endless playback of both sides of tape.

## Recording on TAPE



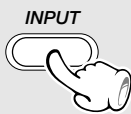
Note that this cassette deck cannot record onto Metal tapes.



### 1. Load a cassette tape.

- ❶ Open the cassette holder.
- ❷ Insert a tape and close the cassette holder

- Be sure to remove tape slack.
- Be sure to close the cassette holder completely.
- The normal (TYPE I) or High (TYPE II) tape types are detected and set automatically.
- Use a cassette tape with which the protect tab for accidental erasure prevention is not broken. → [55](#)



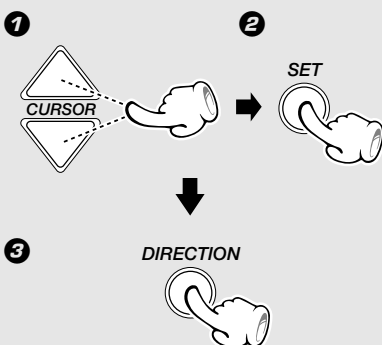
### 2. Select the source to be recorded.

TUNER (Broadcasts)  
VIDEO1  
VIDEO2

To record sound from a CD, use the dedicated recording function by referring to "CD synchronized recording" (→ [27](#)) or "Convenient recording methods" (→ [36](#)).



The present procedure described the most general recording method



### 3. Select the tape transport direction.

To reverse the tape transport direction

- ❶ Select "TAPE" with the CURSOR key.
- ❷ Press the SET key.
- ❸ Press the DIRECTION key to switch the tape transport direction.

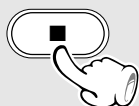
- When recording is started, the tape is transported in the direction selected in this step.
- Wind the tape to the position where recording is to be started.

### Pause the recording (A.R.M.)



- Press the ●REC key during recording. It stops after leaving a non-recorded blank of 4 seconds. (Press the key again to resume recording.)

### Stop the recording



### CD synchronized recording

When recording a CD, the playback of the source and recording of the cassette deck can be synchronized by putting the cassette deck in record-pause mode. (Sync recording)

- 1 Put the CD recorder in pause mode.
  - 2 Select the music to be recorded by using the skip key (◀◀ or ▶▶). (The tape pauses at the beginning of the selected music.)
  - 3 Put the cassette deck in record-pause mode.
  - 4 Start playback of the CD. (Sync recording starts.)
- Press the stop key (■) of the CD player to stop recording.

## 4. Set the recording condition.

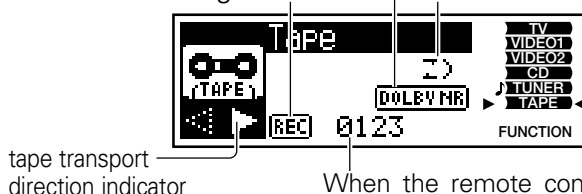
- 1 Perform steps 2 to 4 of "Selecting the reverse mode" on page 25.
- 2 Perform steps 2 to 4 of "Selecting Dolby NR" on page 25.

## 5. Start recording.

Check that "Tape" is being displayed, then press the REC button.



Displayed when Dolby NR is selected  
Recording indicator      Reverse mode indicator



When the remote control unit is attached to the main unit:

#### Tape counter

When it is detached from the main unit: "Stop" for stop, "Play" for playback, "RecPause" for record pause, "A.R.M." during A.R.M. operation.

- Recording stops automatically when the tape side (s) to be recorded have been fully recorded.

RDS is a system which transmits useful information (digital data) for FM broadcasts together with the broadcast signal. Tuners and receivers designed for RDS reception can extract the information from the broadcast signal for use with various functions such as automatic display of the station name.

**This unit is equipped with the following functions utilizing RDS data :**

**PTY (Program Type Identification) Search :**

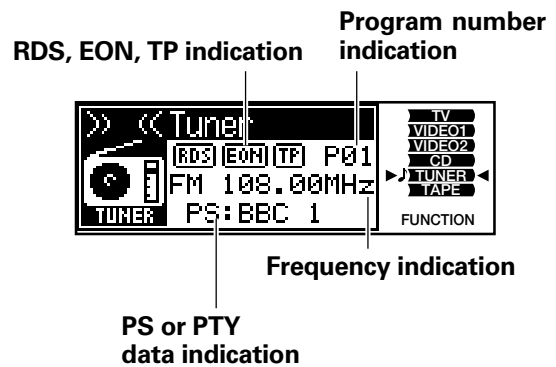
The tuner automatically searches for a station which is currently broadcasting a specified program type (genre).

**PS (Program Service Name) Display :**

When an RDS broadcast is received, the station name is automatically displayed.

**EON (Enhanced Other Network) :**

When the information to be received is set in advance and any RDS station in the same network starts broadcasting of such information, the reception automatically will be switched to that station.



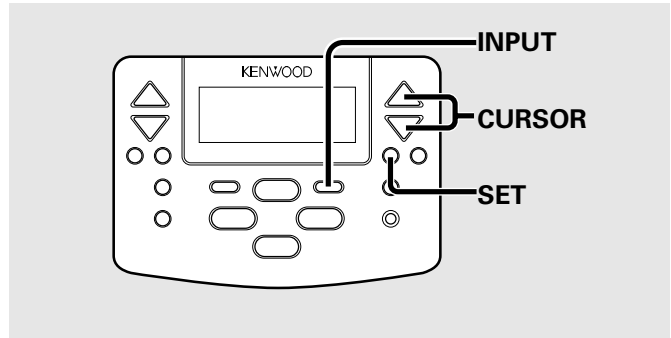
**Before using RDS**

For reception of RDS stations, the auto presetting function must be used to preset the stations. With the auto presetting function, RDS stations are preset with priority.

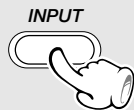
# Searching for a desired program type (PTY search)

By specifying the type of program (genre) you want to listen to, the tuner automatically searches for a station which is currently broadcasting a program of the specified type.

Preset the RDS stations before setting the PTY



## 1 Select the TUNER input.

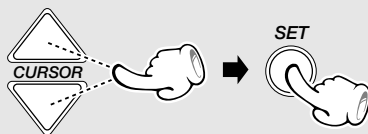


## 2 Display the "Tuner" menu.

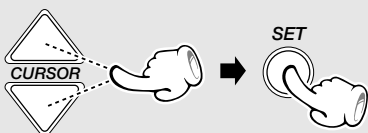


## 3 Select "PTY \*\*\*".

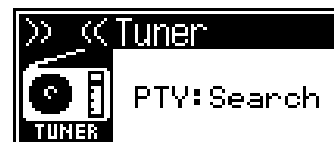
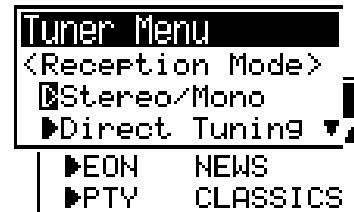
"\*\*\*" shows the currently selected PTY display.



## 4 Select the desired PTY.

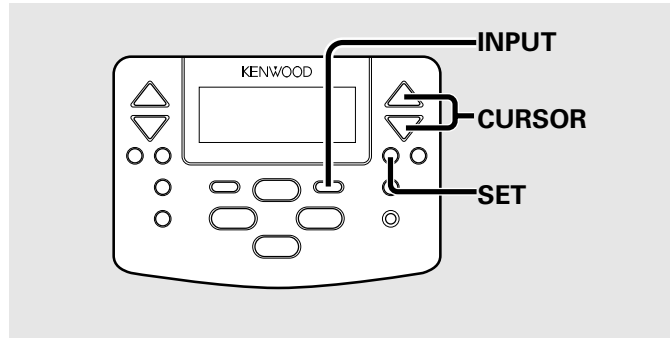


- ① VIDEO1
- ② VIDEO2
- ③ CD
- ④ TUNER
- ⑤ TAPE



- When an RDS broadcast is received, the program type is shown on the display. If no PTY data is available, or if the station is not an RDS station, "NONE" is displayed.

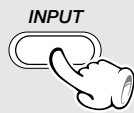
# To be able to listen to the desired information at any time (EON)



By using the EON function, which manages the information of other stations, listening to desired information like traffic information or news etc. can be reserved even when it is not being transmitted at the present. When listening to a station with the "EON" display lit and another station of the same network starts to broadcast an information program for which a reservation has been made, then that station will be selected automatically. When the desired information program ends, return is made to the original program.

## 1 Select the desired information.

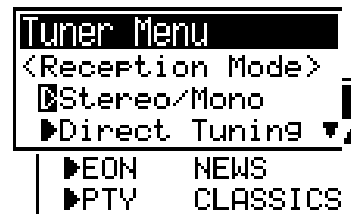
### 1 Select the TUNER input.



- ① VIDEO1
- ② VIDEO2
- ③ CD
- ④ TUNER
- ⑤ TAPE

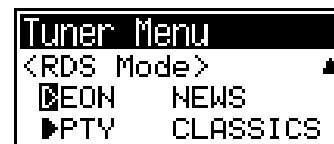
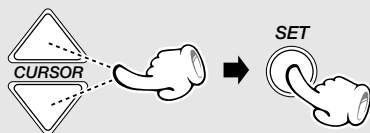


### 2 Display the "Tuner" menu.

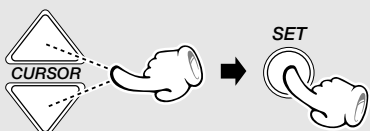


### 3 Select "EON \*\*\*".

"\*\*\*" shows the currently selected EON mode display.



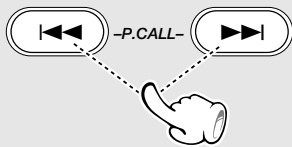
### 4 Select the desired EON mode.



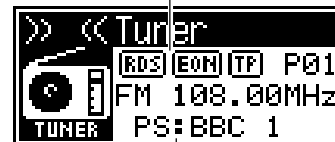
- Off..... EON cancelled
- TA ..... Traffic Announcement
- NEWS ..... News
- TA & NEWS ..... Traffic Announcement and News

## 2 Receive an RDS station.

Select a station where "RDS" and "EON" are lit.



"RDS" and "EON" are Lit

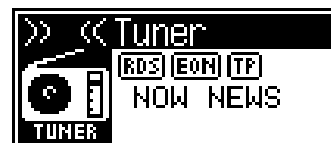


Each press of the stop (■) key switches the **PS** and **PTY** display alternately.

## 3 Wait for the desired information.

CD or TAPE playback may also be started. As long as the unit is ON, the unit is always ready for the reception.

- When one of the stations of the network of the station received in **2** starts broadcasting the program contents selected in **1**, that station will be received automatically. At this time, Tape playback will stop and CD playback will pause. However, external equipment (VIDEO1/VIDEO2) will remain as it is.



- When the unit is OFF or during recording, the EON function does not operate.
- When the transmission of the selected program contents ends in case of automatic reception with the EON function, return will be made to the status directly before operation of the EON function. When CD or TAPE playback has been interrupted, it will be continued from the point of interruption.

### ***In case of waiting for information with an RDS station without EON function***

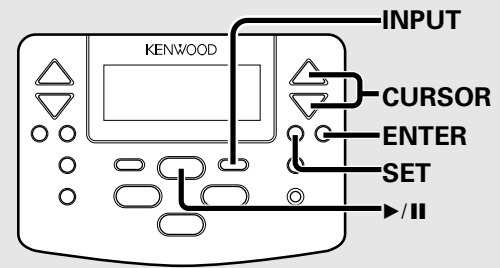
When there is no "EON" display with the operations of steps **2** and **3** and the desired information is selected in advance, waiting for the desired information will be done only with the presently received RDS station.

### ***In regard to TP (Traffic Program) indicator***

When the "TP" indicator is lit, this indicates that the station or another station in the same network is broadcasting traffic information. Even without an EON reservation, traffic information can be heard from the station when "TP" indicator is lit for the presently received station.

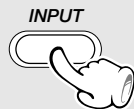
## Listening in the desired sequence (program playback)

Use the following procedure to program desired tracks in a desired order. (up to 32 tracks)



### 1 Program desired tracks. (In stop mode only)

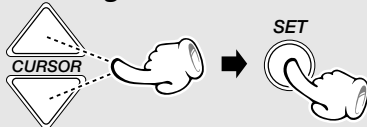
- 1** Select the CD input.



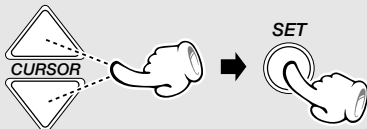
- 2** Display the "CD" menu.



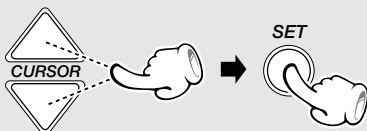
- 3** Select the message to be displayed, "Program On" or "Program Off".



- 4** Select the "Set".

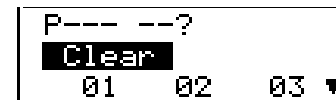
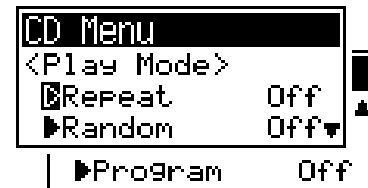


- 5** Select a track number and press the SET key.



- 6** To program other tracks, repeat step 5 for each track.

- 7** Press the ENTER key to quit programming.



- When "Clear" is selected, the program being displayed will be cleared.
- Up to 32 tracks can be programmed. When "Program Full" is displayed, no more track can be programmed.
- If you make a mistake in the middle, press the HOME key to return to the basic screen.



**2 Play the programmed tracks.**

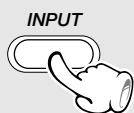


- Pressing the I◀◀ or ▶▶I key during playback skips to one of the tracks programmed before or after the current track.
- Pressing the I◀◀ key once during playback returns to the beginning of the current track.

**Checking the program (In stop mode only)**

Use the following procedure to check the programmed tracks.

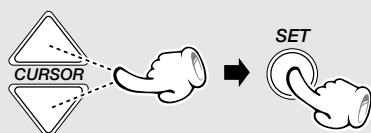
**1 Select the CD input.**



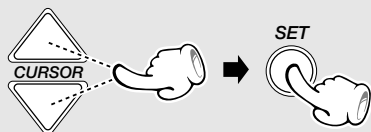
**2 Display the "CD" menu.**



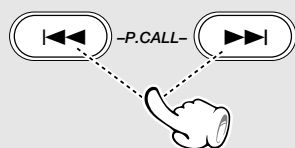
**3 Select the message to be displayed, "Program On".**



**4 Select the "Check".**



**5 Display a program number and check the track programmed under it.**



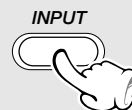
**6 Press the ENTER key to quit program checking.**



**Clearing the program (In stop mode only)**

Use the following procedure to clear all the programmed tracks from the program.

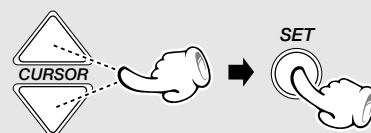
**1 Select the CD input.**



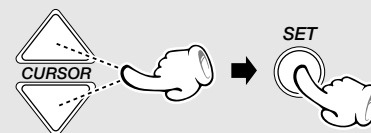
**2 Display the "CD" menu.**



**3 Select the message to be displayed, "Program On".**



**4 Select the "Off".**

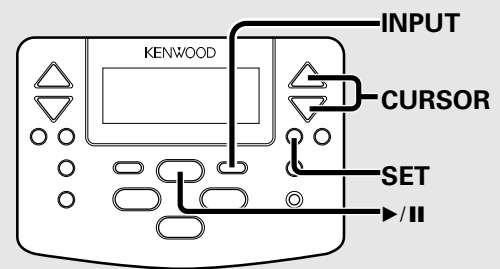


## Repeated playback

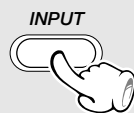
You can repeatedly listen to a favorite track or disc.

### Program repeat playback

- By programming only the desired tracks, it is possible to perform the repeat playback of only the programmed tracks later.
- To repeat playing a single track, program that track only and start its repeat playback.



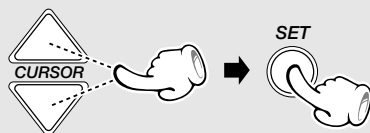
#### 1 Select the CD input.



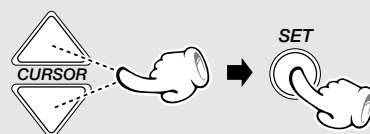
#### 2 Display the "CD" menu.



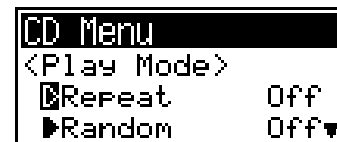
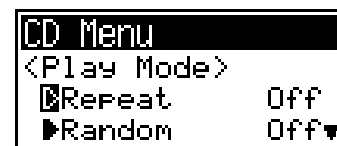
#### 3 Select the message to be displayed, "Repeat Off" or "Repeat On".



#### 4 Select "On".



#### 5 Start playback



- The entire disc will be played repeatedly.
- When both repeat playback and random playback (→ 35) are used simultaneously, all tracks in the disc will be played in a random order and this random playback will be repeated.

### To cancel repeat playback

Select "Off" in step 4 to cancel repeat playback.

### To stop operation in the middle

Press the HOME key to abort and cancel the operation and return to the basic screen.

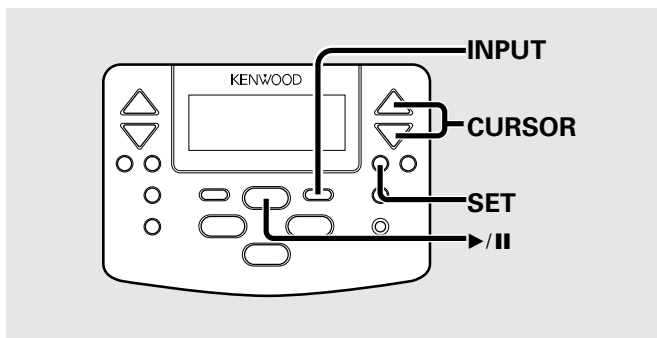
## Listening to an unexpected title sequence (random playback)

As the titles each time are selected randomly, the music can be enjoyed without getting tired of it.

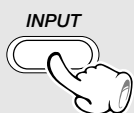
- It is not possible to perform random playback of programmed tracks.

### Random repeat playback

- When repeat playback is set before starting random playback, the random playback of the disc will be repeated.



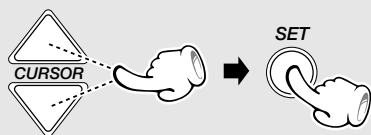
#### 1 Select the CD input.



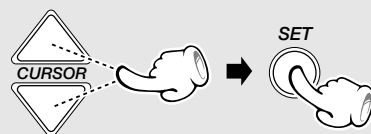
#### 2 Display the "CD" menu.



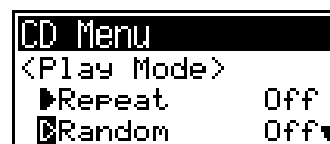
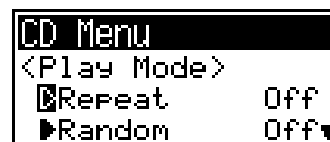
#### 3 Select the message to be displayed, "Random Off" or "Random On".



#### 4 Select "On".



### Cancel the program mode.



- The tracks in the entire disc will be played in a random order, after which playback will stop.

### To cancel random playback

Select "Off" in step 4 to cancel random playback.

### To stop operation in the middle

Press the HOME key to abort and cancel the operation and return to the basic screen.

## Selection of the Recording Type

This unit provides the following recording features in addition to normal recording. Select the appropriate method according to the purpose of recording.



Note that this cassette deck cannot record onto Metal tapes.

### Recording all tracks in a CD onto tape

#### CD direct recording



**CD direct recording**



Records all tracks in a CD onto tape.

### Recording a single track in CD onto tape

#### CD one-track recording



**CD one-track recording**



Records the CD track being played onto a tape.  
(This is convenient when you play a CD for the first time but want to select and record only the desired tracks.)

### Recording desired CD tracks in a desired order onto tape

#### CD program recording



**CD program recording**



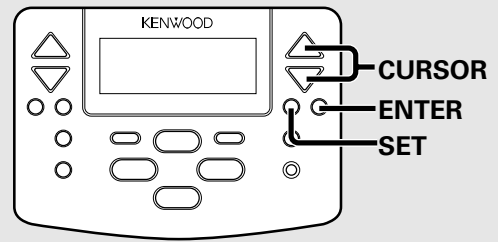
Records the programmed CD tracks in the programmed order.  
(This is convenient when you want to program and record desired tracks in a CD in a desired order.)



With recording onto tape, the track will be interrupted for the part of the guide tape at the tape reversal, where recording is not possible. Please use single-side recording if this is to be avoided.

# Recording an entire CD onto tape (CD direct recording)

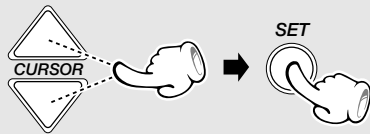
- This function is canceled when the program mode is activated.
- This function is available only when the CD player is in stop mode.



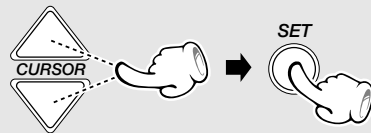
### Preparation

- Perform step 3 ("Select the tape transport direction") on page 26.
- Perform steps 2 to 4 of "Selecting the reverse mode" on page 25.

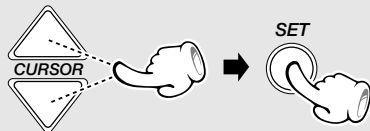
#### 1 Display the "Function" menu.



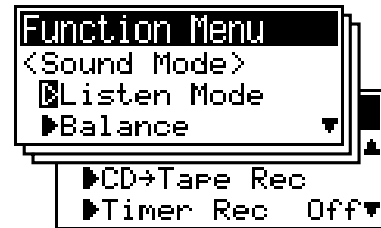
#### 2 Select the message to be displayed, "CD→Tape Rec".



#### 3 Select the "Direct Rec".



#### 4 Start recording



Total number of tracks in CD,  
total play time



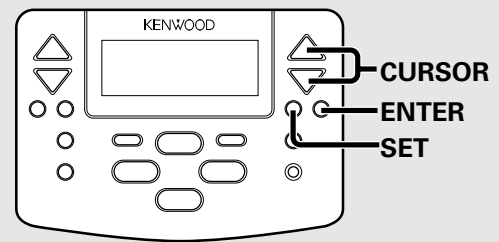
### To stop operation in the middle

Press the HOME key to abort and cancel the operation and return to the basic screen.

## Recording every desired track in CD onto tape (CD one-track recording)

During playback of a CD track, only the track being played can be selected and recorded from the beginning.

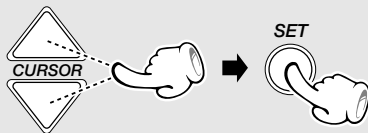
- CD random playback cannot be recorded.



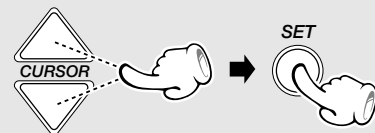
### Preparation

- Perform step 3 ("Select the tape transport direction") on page 26.
- Perform steps 2 to 4 of "Selecting the reverse mode" on page 25.

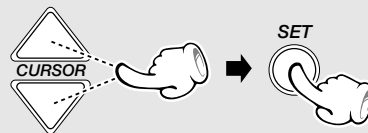
#### 1 Display the "Function" menu.



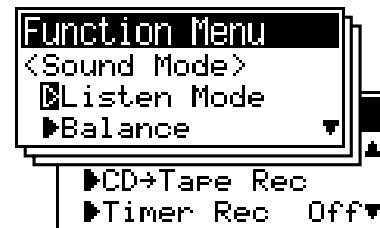
#### 2 Select the message to be displayed, "CD→Tape Rec".



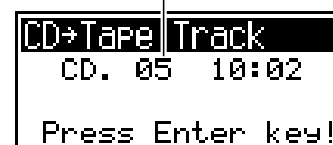
#### 3 Select the "One Track Rec".



#### 4 Start recording



CD track No. being played, elapsed play time of the track being played



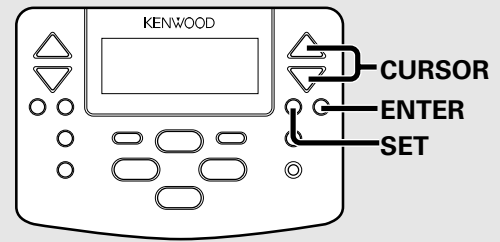
### To stop operation in the middle

Press the HOME key to abort and cancel the operation and return to the basic screen.

# Recording desired CD tracks in a desired order onto tape (CD program recording)

The desired tracks in a CD can be programmed in a desired order and recorded.

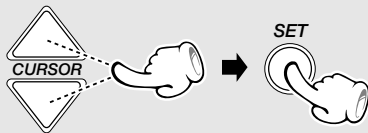
- This function is available only when the CD player is in stop mode.



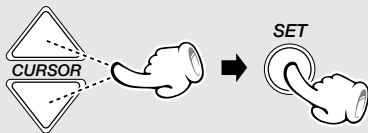
### Preparation

- Perform step 3 ("Select the tape transport direction") on page 26.
- Perform steps 2 to 4 of "Selecting the reverse mode" on page 25.

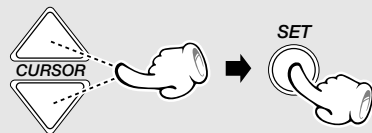
#### 1 Display the "Function" menu.



#### 2 Select the message to be displayed, "CD→Tape Rec".



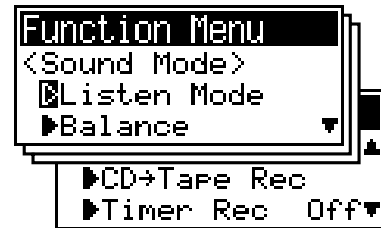
#### 3 Select the "Program Rec".



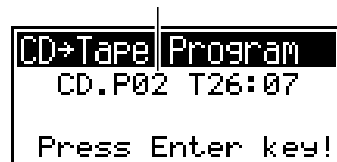
#### 4 Program CD tracks.

Follow 5 to 7 in step 4 on page 32.

#### 5 Start recording

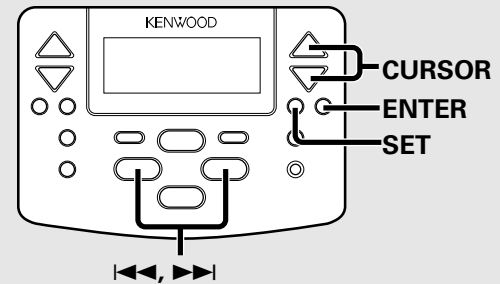


Number of programmed CD tracks, total play time of the program



#### To stop operation in the middle

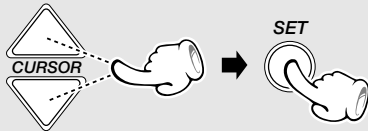
Press the HOME key to abort and cancel the operation and return to the basic screen.



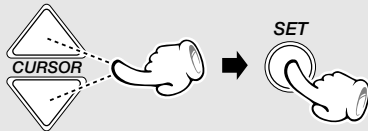
## Adjusting the external input level

Use the following procedure to adjust the levels of the Video1 and Video2 inputs.

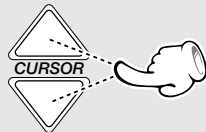
- ① Display the "Function" menu.



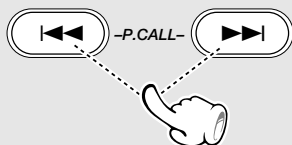
- ② Select the message to be displayed, "Input Level".



- ③ Select the "Video1" or "Video2".



- ④ Adjust the input level of the selected input.



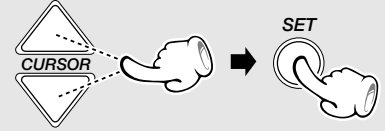
The adjustment range is between +3 and -4.

- ⑤ Press the ENTER key

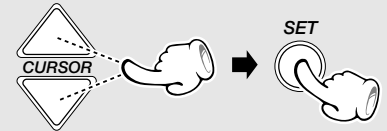


## Adjusting the subwoofer output level (NV-600 only)

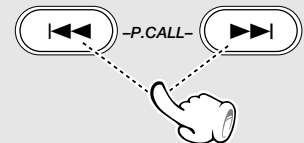
- ① Display the "Function" menu.



- ② Select the "S.W. Level".



- ③ Adjust the level of the subwoofer output.



The adjustment range is between 1 and 5.

- ④ Press the ENTER key

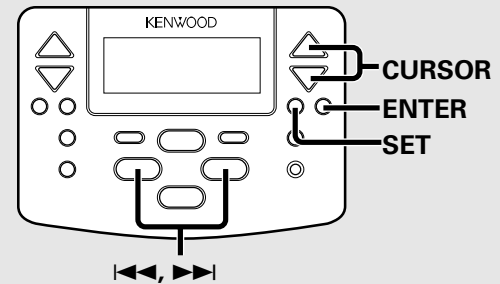




## Bass Boost and tone control

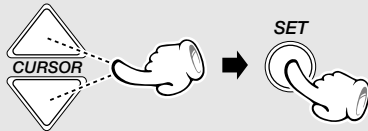
The Bass Boost function allows you to enhance or compensate for the low frequencies and the tone control function is used for fine adjustments of the bass (low frequencies) and treble (high frequencies).

- The sound field effects of Bass Boost and tone control cannot be used simultaneously.

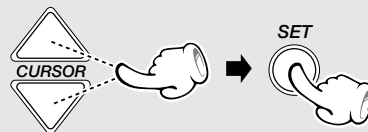


### Selecting the bass boost (NV-500 only)

- 1 Display the "Function" menu.



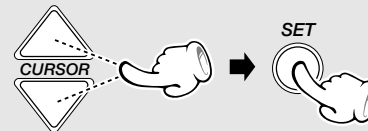
- 2 Select the "Listen Mode".



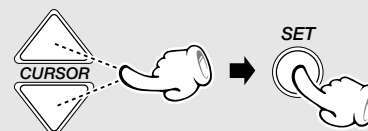
- 3 Select the message to be displayed, "Bass Boost Off" or "Bass Boost On".

The tone control setting is switched off.

The tone control setting is recalled whenever the Bass Boost setting is switched off.



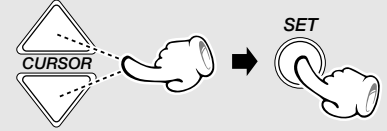
- 4 Select the message to be displayed, "On" or "Off", and press the SET key.



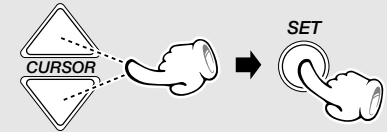
### Tone adjustment

The lowest and highest frequency bands can be adjusted independently.

- 1 Display the "Function" menu.

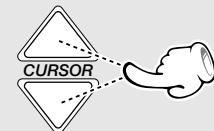


- 2 Select the "Tone Control".

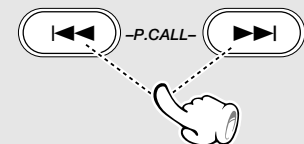


- 3 Select the message to be displayed, "Bass" or "Treble".

The bass boost setting is switched off.



- 4 Adjust the level of the selected tone.



The adjustment range is between +4 and -4.

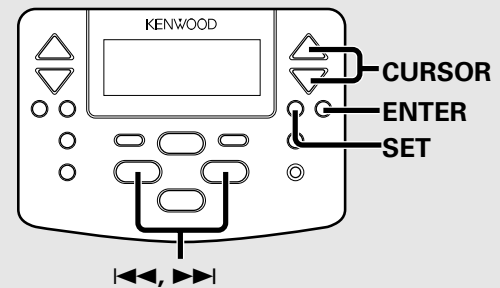
- 5 Press the ENTER key



## Dolby Virtual setting

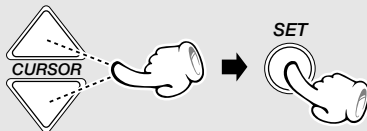
The Dolby Virtual function is designed to provide a simulated surround effect from two speakers on the left and right. This is a convenient function for playing a movie, etc.

- The DSP mode is canceled when Dolby Virtual is set.

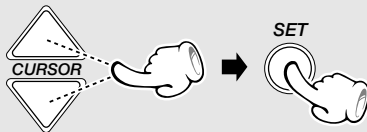


### Setting ON or OFF

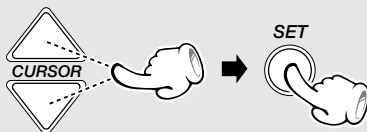
- 1 Display the "Function" menu.



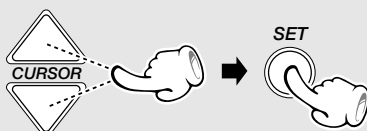
- 2 Select the "Listen Mode".



- 3 Select the message to be displayed, "Virtual On" or "Virtual Off".

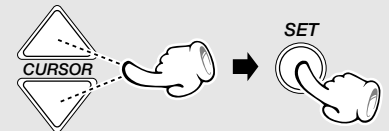


- 4 Select "On" or "Off".

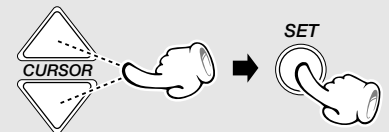


### Select level

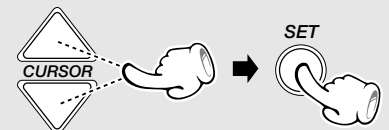
- 1 Display the "Function" menu.



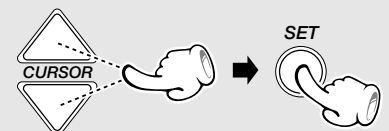
- 2 Select the "Listen Mode".



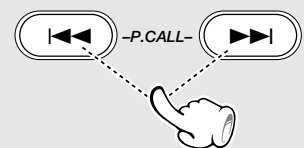
- 3 Select the message to be displayed, "Virtual On".



- 4 Select the "Effect Level".



- 5 Select the "Level 1", "Level 2" or "Level 3".



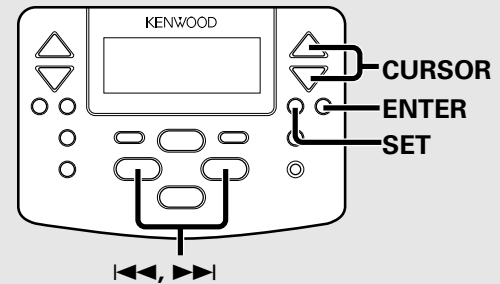
- 6 Press the ENTER key



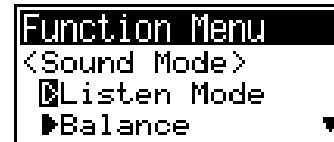
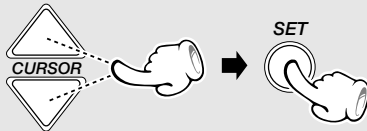
## DSP mode setting

The DSP (Digital Surround Processor) controls the tone of a signal in the digital form and makes sound processing without quality degradation possible. The DSP built into this unit provides appropriate tone patterns (equalizing patterns) for major musical categories.

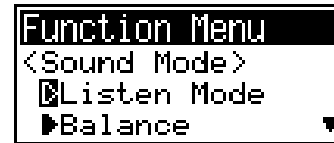
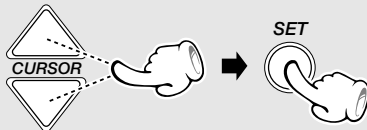
- The Dolby Virtual function is canceled when the DSP mode is set.



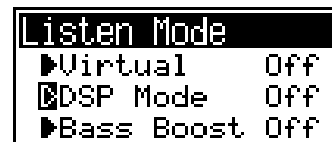
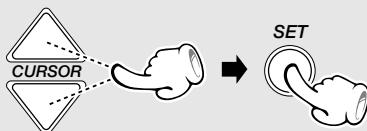
### 1 Display the "Function" menu.



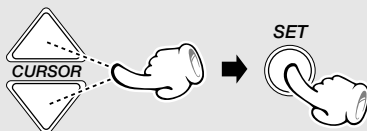
### 2 Select the "Listen Mode".



### 3 Select the message to be displayed, "DSP On" or "DSP Off".



### 4 Select the desired DSP pattern.



This display shows the example with the NV-500.

↑ "Off"  
 "Stadium"  
 "Arena"  
 ↓ "Live house"

## O.T.T. :

Starts playback of the selected input source when the set time comes and turns power off in an hour. This program is executed only once every time after it is set.

## Timer playback, timer recording:

Plays the selected input source (or records tuner broadcasting or external input source) in the set time zone.

## SLEEP timer:

Turns power off automatically after the set period of time.

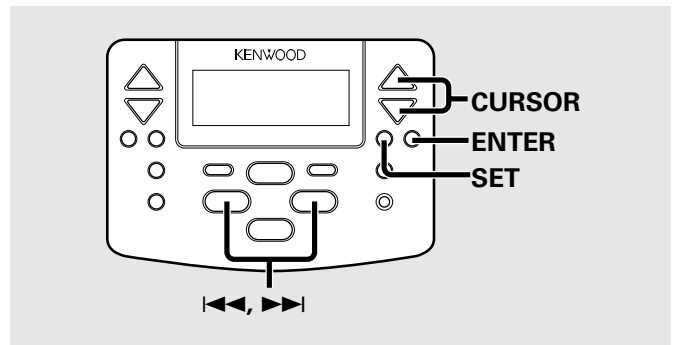
## When more than one timer setting overlaps

With this unit, the O.T.T. on time, the timer playback on time/off time and the timer recording on time/off time can be set independently. If more than one timer setting overlaps in a certain period, the timer functions are activated in the following priority order:

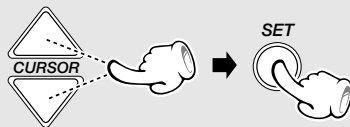
- ① O.T.T.
- ② Timer playback
- ③ Timer recording

## Setting the O.T.T.

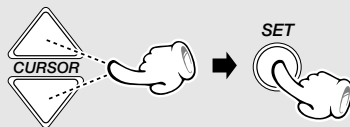
When the time set by the timer comes, the last source which was selected before the power was switched off will be played back.



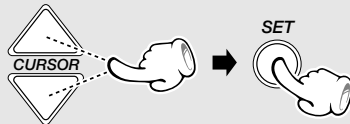
### ① Display the "Function" menu.



### ② Select the message to be displayed, "O.T.T. Off" or "O.T.T. On".

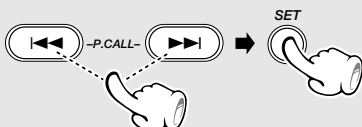


### ③ Select the message to be displayed, "On".



### ④ Set the timer start time.

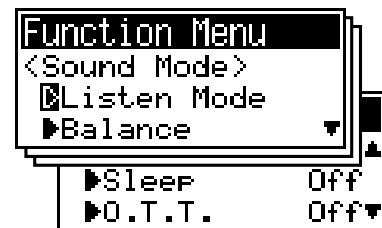
To return time    To advance time



### ⑤ After setting the start time, press the ENTER key.



### ⑥ After completing the setting, set the power OFF.



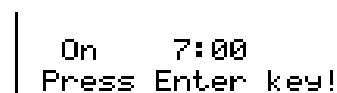
- Select "Off" when you want to cancel the O.T.T. timer.



- The time is variable in 5-minute steps.



- In other areas than the UK, Europe and Australia, the clock shows the time of the day in the 12-hour system.



- When the timer has been set and power set to OFF, the **STANDBY/TIMER** indicator lights up in amber.

# Setting the timer playback

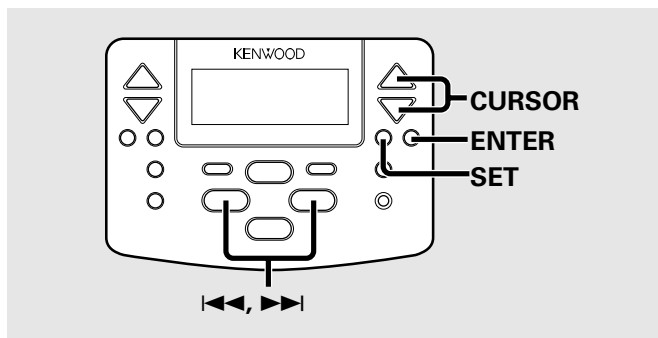
Timer playback includes normal timer playback and AI (Artificial Intelligence) timer playback.

## Normal timer playback:

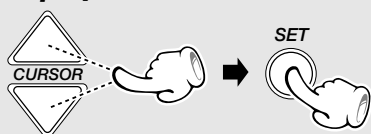
Starts playback of the selected source at the set on time and turns power OFF at the set off time.

## AI timer playback:

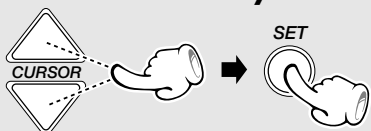
Increases the playback volume gradually after the start of timer playback.



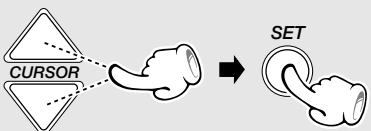
1 Display the "Function" menu.



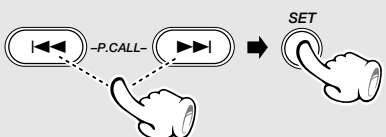
2 Select the message to be displayed, "Timer Play Off" or "Timer Play On".



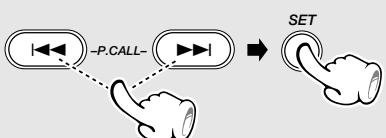
3 Select the message to be displayed, "On".



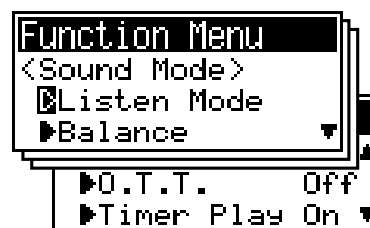
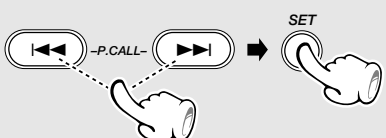
4 Set the on time.



5 Set the off time.



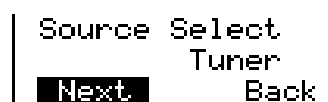
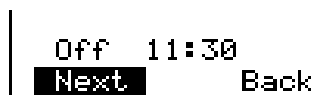
6 Select the input to be played by timer.



- Select "Off" when you want to cancel the timer.



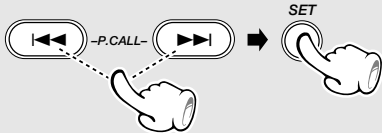
- It is not permitted to set the same time of day as the on time and off time.



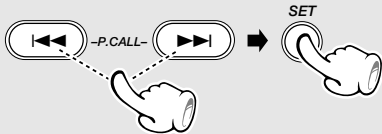
To return to the previous operation step in the middle, select "Back" with the CURSOR key and press the SET key. Select "Next" to advance to the next step.

Continued to next page

- 7** Select a preset radio station.  
(This step is required only when the tuner input is selected in the above.)



- 8** Select the message to be displayed, "AI-Play" or "Normal-Play".



- 9** Press the ENTER key to complete the setting.



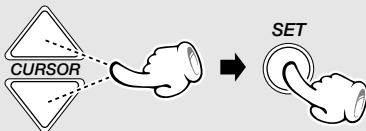
- 10** After completing the setting, set the power OFF.



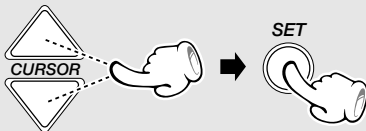
- When the timer has been set and power set to OFF, the **STANDBY/TIMER** indicator lights up in amber.

### Sleep Timer (Sleep)

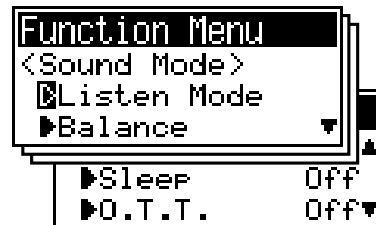
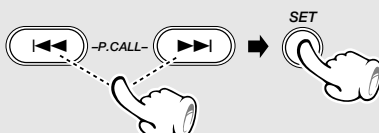
- 1** Display the "Function" menu.



- 2** Select the message to be displayed, "Sleep On" or "Sleep OFF".



- 3** Set the time period until the power is to be turned OFF.



- The time period can be set in 10-minute steps from "Off" up to "90" minutes.
- Selecting "Off" cancels the sleep timer setting.

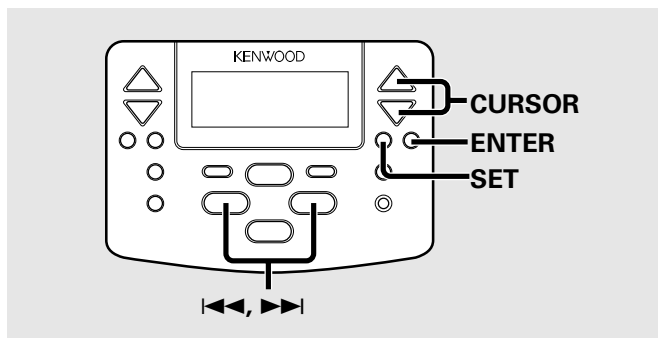


- The back light of the remote control unit turns off while the sleep timer is active.
- The power will turn off when the set time period has elapsed.

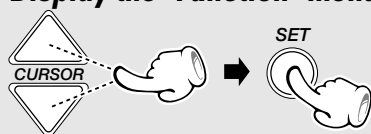
# Timer recording

Timer recording is used to record a source onto a tape.

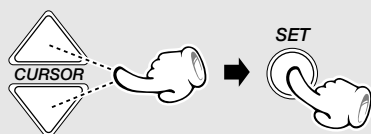
The TUNER or the component connected to the Video1 or Video 2 input can be selected as the source.



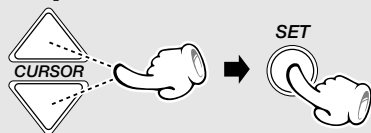
1 Display the "Function" menu.



2 Select the message to be displayed, "Timer Rec Off" or "Timer Rec On".

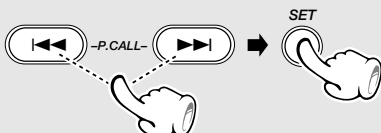


3 Select the message to be displayed, "On".



4 Perform the setting operation in steps 4 to 5 under "Setting the timer playback".

5 Select the input source to be recorded.

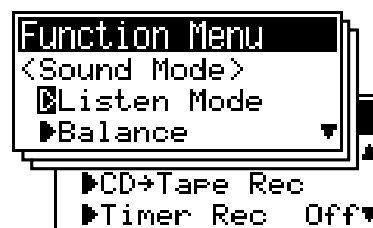


6 Select a preset radio station.



7 Press the ENTER key.

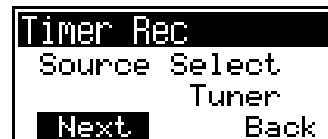
8 After completing the setting, set the power OFF.



- Select "Off" when you want to cancel the timer.



- "Tuner", "Video1" or "Video2" can be selected.



(This step is required only when the tuner input is selected in the above.)

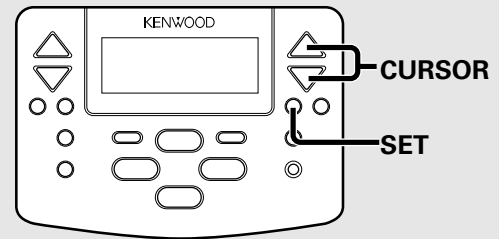
To return to the previous operation step in the middle, select "Back" with the CURSOR key and press the SET key. Select "Next" to advance to the next step.

- Audio is not output during timer recording.

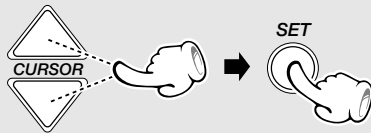
# Checking the time information display of CD

The remote control unit can display the time information of CD such as the playing time and total time.

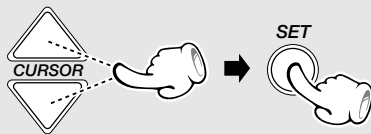
The time information can be checked while the CD is playing or stopped.



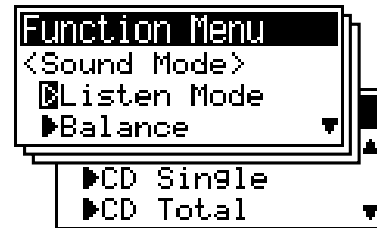
## ① Display the "Function" menu.



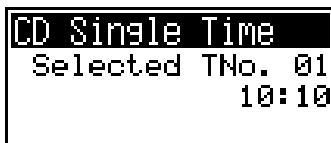
## ② Select the information item to be displayed.



The items as shown below can be selected.



## CD Single Time display



### During stop in normal mode:

Playing time of the first track.

### During playback in normal mode:

Playing time of the track being played.

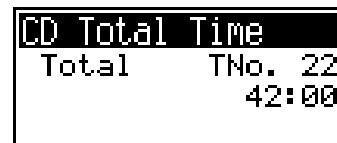
### During stop in program mode:

Playing time of the first programmed track.

### During playback in program mode:

Playing time of the track being played.

## CD Total Time display



### In normal mode:

Total playing time of the disc.

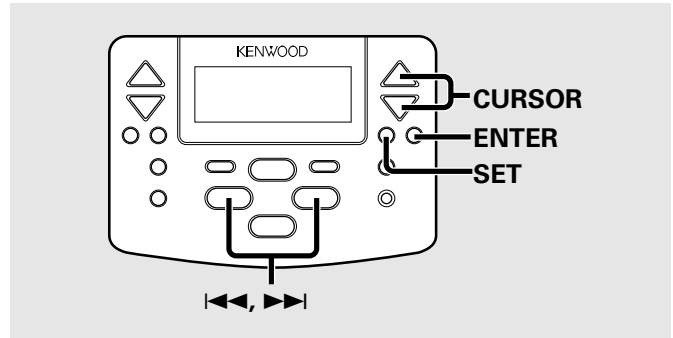
### In program mode:

Total playing time of the programmed tracks.

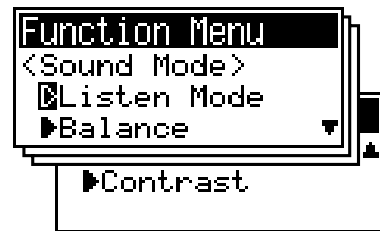
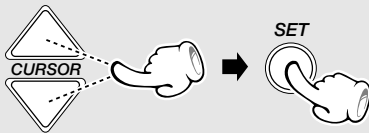


# Adjusting the display contrast

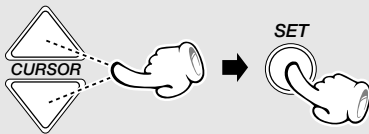
Use the following procedure to adjust the density of the display on the remote control unit.



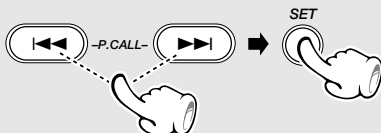
**1** Display the "Function" menu.



**2** Select the message to be displayed, "Contrast".



**3** Adjust the contrast.



**4** Press the ENTER key

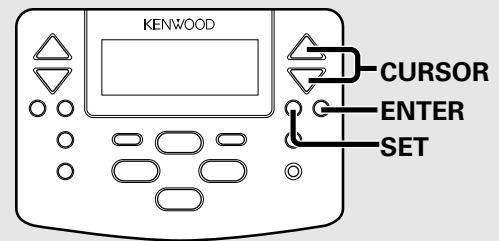


## Registering the controlled components in the remote control unit

The remote control unit can also be used to control the major functions of externally connected components such as a TV, VCR and DVD player.

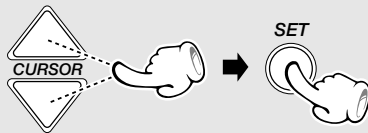
To make the control possible, it is required to select the manufacturer and type (VCR, DVD, etc.) of each component and register it in the memory of the remote control unit.

Note that, with components from certain manufacturers or of certain types, remote control may not be available or the controllable functions may be limited.

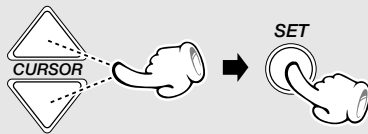


### Registering the TV to be used

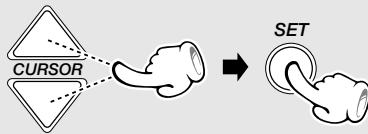
- ① Display the "Function" menu.



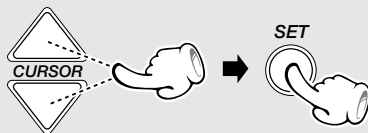
- ② Select the message to be displayed, "TV".



- ③ Select the manufacturer.



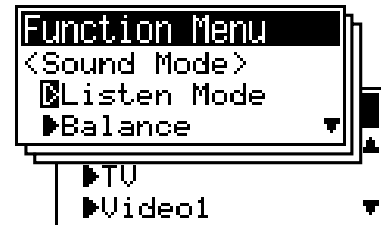
- ④ Select the type of the remote control codes.



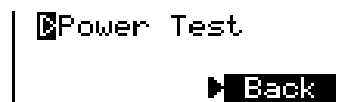
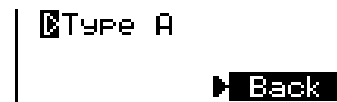
- ⑤ Check the remote control operations.



- ⑥ If the operations are normal, press the ENTER key to set it.



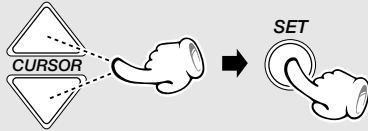
The manufacturer list is displayed.



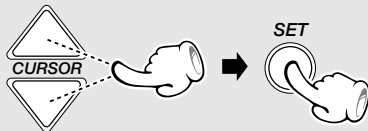
- Press the SET key and ensure that the component is turned ON.
- If normal operation cannot be performed, place the cursor on "Back" and re-select the code type. Be sure to check the results later.

## Registering the component connected to the rear-panel Video1 or Video2 input

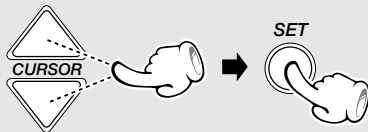
- ① Display the "Function" menu.



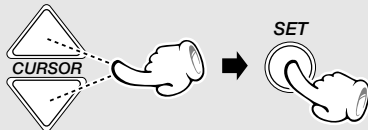
- ② Select the message to be displayed, "Video1" or "Video2".



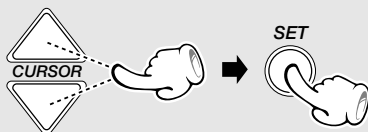
- ③ Select the type of the component (VCR, DVD, etc).



- ④ Select the manufacturer.



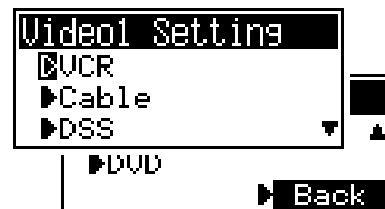
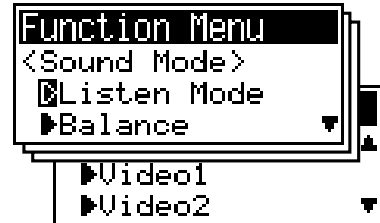
- ⑤ Select the type of the remote control codes.



- ⑥ Check the remote control operations.

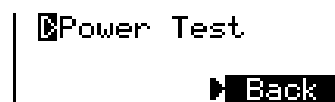
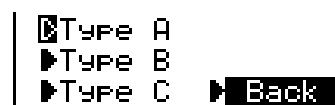


- ⑦ If the operations are normal, press the ENTER key to set it.



- The cable tuner and DSS operations are not available in other areas than the U.S.A. and Canada.
- The displayed information is variable depending on areas.

The manufacturer list is displayed.

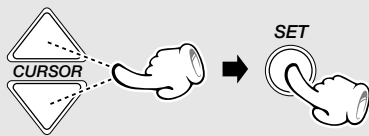


- Press the SET key and ensure that the component is turned ON.
- If normal operation cannot be performed, place the cursor on "Back" and re-select the code type. Be sure to check the results later.

# Remote control of external components

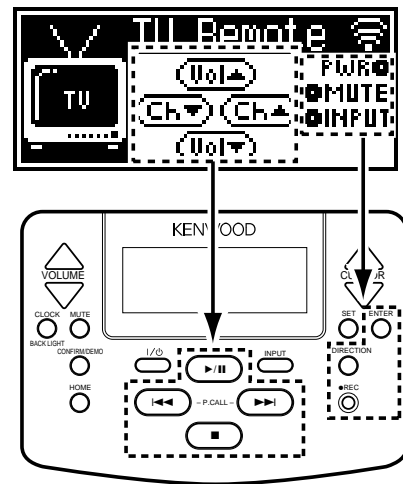
By registering the externally connected components such as a TV, VCR and DVD player in the remote control unit, it can be used to control the major functions of the external components.

Select the input corresponding to the component to be remote controlled.



The display show the function names and/or symbols of the 7 available remote control keys. The correspondence between the displayed keys and panel keys is as shown below.

If the remote control keys are provided in more than one display page, each page can be switched every time the SET key is pressed.



**TV control screen**

This screen consists of a single page.

Symbol on the remote control	Display	Function
▶/   BAND	Vol ▲	Volume Up
■	Vol ▼	Volume Down
▶▶	Ch ▲	Channel Up
◀◀	Ch ▼	Channel Down
ENTER	PWR	Power
DIRECTION	MUTE	Muting
● REC	INPUT	Input selection

**Cable Tuner control screen (for U.S.A. & Canada)**

This screen consists of a single page.

Symbol on the remote control	Display	Function
▶/   BAND	Vol ▲	Volume up
■	Vol ▼	Volume down
▶▶	Ch ▲	Channel up
◀◀	Ch ▼	Channel down
ENTER	PWR	Power
DIRECTION	-	-
● REC	-	-

**DVD control screen**

This consists of 3 pages.

Each press of the SET key switches the pages alternately.

Symbol on the remote control	Display	Function	Display	Function	Display	Function
▶/   BAND	▶	Play	▲	Cursor	▲	Cursor
■	■	Stop	▼	Cursor	▼	Cursor
▶▶	▶▶	Forward skip	▶	Cursor	▶	Cursor
◀◀	◀◀	Reverse skip	◀	Cursor	◀	Cursor
ENTER	PWR	Power	ENTER	Enter	ENTER	Enter
DIRECTION	PAUSE	Pause	OSD	OSD	MENU	Menu
● REC	-	-	RTN	Return	RTN	Return

**VCR control screen**

This consists of 2 pages.

Each press of the SET key switches the pages alternately.

Symbol on the remote control	Display	Function	Display	Function
▶/   BAND	▶	Play	▶	Play
■	■	Stop	■	Stop
▶▶	▶▶	Fast forward	Ch▲	Channel Up
◀◀	◀◀	Fast reverse	Ch▼	Channel Down
ENTER	PWR	Power	PWR	Power
DIRECTION	PAUSE	Pause	AUDIO*	Audio switching
● REC	REC	Record	INPUT	Input selection

\*Note: This function is available only with other models than the Europe, UK and the U.S.A. destination models.

**DSS control screen (for U.S.A. & Canada)**

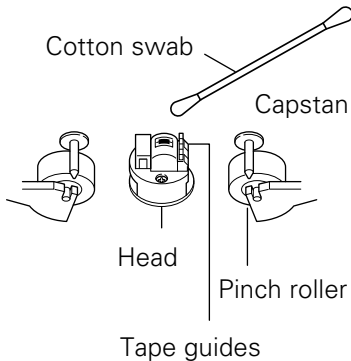
This consists of 2 pages.

Each press of the SET key switches the pages alternately.

Symbol on the remote control	Display	Function	Display	Function
▶/   BAND	-	-	▲	Cursor
■	-	-	▼	Cursor
▶▶	Ch▲	Channel up	▶	Cursor
◀◀	Ch▼	Channel down	◀	Cursor
ENTER	PWR	Power	ENTER	Enter
DIRECTION	INFO	Information	MENU	Menu
● REC	INPUT	Input selection	GUIDE	Guide

## Maintenance

### Cleaning the head section



### Cleaning the heads and peripheral components

For maintaining the best condition of the deck and for longer service life, always keep the heads (recording / playback / erase), capstan and pinch roller clean.

To clean them, perform the following:

1. Open the cassette holder.
2. Using a cotton swab dipped in alcohol, clean the head (recording / playback / erase), capstan and pinch roller carefully.

### Demagnetizing the head

When the recording / playback head is magnetized, the sound quality will deteriorate. In such a case, demagnetize the head using a commercially available demagnetizer (head eraser).



There are precisely aligned parts around the heads, including the tape guides. When cleaning, pay special attention so as not to apply shock to them.

### Maintenance of the Set

When the front panel, the case, etc. becomes dirty, wipe with a soft, dry cloth. Do not use thinner, alcohol, etc., as these can cause discoloration.

### In regard to contact cleaners

Do not use contact cleaners because it could cause a malfunction. Be specially careful not to use contact cleaners containing oil, for they may deform the plastic component.

## Reference

### Caution on condensation

Condensation (of dew) may occur inside the unit when there is a great difference in temperature between this unit and the outside.

This unit may not function properly if condensation occurs. In this case, leave the unit for a few hours with the power left ON, and restart the operation after the condensation has dried up.

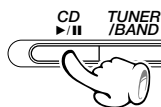
**Be specially cautious against condensation in a following circumstance:**

When this unit is carried from a place to another across a large difference in temperature, when the humidity in the room where this unit is installed increases, etc.

### Note related to transportation and movement

Before transporting or moving this unit, carry out the following operations.

- 1 Select the CD input



- 2 Press the ▲ key and take out the CD.



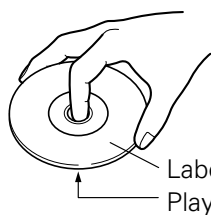
- 3 Ensure that "No Disc" is displayed.

- 4 Wait for a few seconds, then set the power OFF.

### Memory backup function

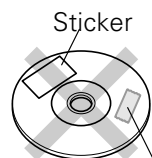
<b>Stored contents which are cleared immediately when power plug is unplugged from power outlet</b>	Clock display
<b>Stored contents which are cleared in at least a day after power plug is unplugged from power outlet</b>	<b>Amplifier section</b> "on/standby" status (ON or STANDBY) Last input selection Volume control value Tone control levels Video1/Video2 input level Balance setting <b>Tuner section</b> Receiving band Frequency Preset stations Auto/mono setting Program timer setting contents <b>Cassette deck unit</b> Transport direction Dolby NR Reverse mode

### Disc handling precautions



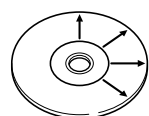
#### Handling

Hold the discs so that you do not touch the playing surface.



Sticky paste

Do not attach paper or tape to either the playing side or the label side of the discs.



#### Cleaning


If fingerprints or foreign matter become attached to the disc, lightly wipe the disc with a soft cotton cloth (or similar) from the center of the disc outwards in a radial manner.

#### Storage

When a disc is not to be played for a long period of time, remove it from the player and store it in its case.

### Discs which can be played with this unit

CD (12 cm, 8 cm), and the audio part of CDV, CD-G, CD-EG and CD-EXTRA.

Use discs that comply with the IEC standard, for example a disc carrying  the marking on the label surface.

### Never play a cracked or warped disc

During playback, the disc rotates at high speed in the player. Therefore, to avoid danger, never use a cracked or deformed disc or a disc repaired with tape or adhesive agent. Please do not use discs which are not round because they may cause a malfunction.

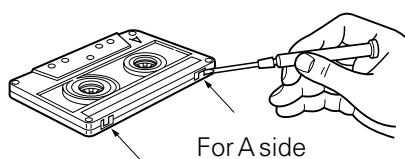
### Disc accessories

The disc accessories (stabilizer, protection sheet, protection ring, etc.) which are marketed for improving the sound quality or protecting discs as well as the disc cleaner should not be used with this system because they may cause malfunction.

### Notes on cassette tape

#### Safety tab (accidental erasure prevention tab)

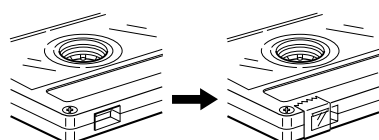
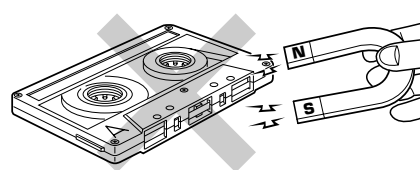
After an important recording has been finished, break the safety tab, to prevent the recorded contents from being erased or recorded on accidentally.



For B side

#### To store cassette tapes

Do not store the tapes in a place which is subject to direct sunlight, or near equipment that generates heat. Keep the cassette tapes away from any magnetic field.

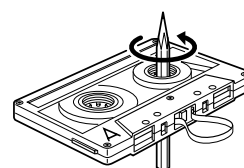


#### To re-record

Apply tape only to the position where the tab has been removed.

#### When there is slack in the tape

In such a case, insert a pencil into the reel hole and wind the reel hub to remove the slack.



#### 1. Longer tape than 110 minutes cassette tape

Since longer tape than 110 minutes cassette tape is very thin, the tape could adhere to the pinch roller or be easily broken. It is recommended that these tapes not be used with this unit to prevent possible damage.

#### 2. Endless tapes

Do not use an endless tape, as this could damage the mechanism of the unit.

**CAUTION:**

**Use of controls or adjustments or performance of procedures other than those specified herein may result in hazardous radiation exposure.**

**In compliance with Federal Regulations, following are reproductions of labels on, or inside the product relating to laser product safety.**

**KENWOOD CORPORATION  
2967-3, ISHIKAWA-CHO,  
HACHIOJI-SHI,  
TOKYO, JAPAN**

**KENWOOD CORP. CERTIFIES THIS EQUIPMENT  
CONFORMS TO DHHS REGULATIONS NO. 21 CFR  
1040.10, CHAPTER 1, SUBCHAPTER J.**

**Location: Back Panel**

**Note to CATV system installer**

This reminder is provided to call the CATV system installer's attention to Article 820-40 of the NEC that provides guidelines for proper grounding and, in particular, specifies that the cable ground shall be connected to the grounding system of the building, as close to the point of cable entry as practical

**FCC WARNING**

This equipment may generate or use radio frequency energy. Changes or modifications to this equipment may cause harmful interference unless the modifications are expressly approved in the instruction manual. The user could lose the authority to operate this equipment if an unauthorized change or modification is made.

**NOTE:**

This equipment has been tested and found to comply with the limits for a Class B digital device, pursuant to Part 15 of the FCC Rules. These limits are designed to provide reasonable protection against harmful interference in a residential installation. This equipment may cause harmful interference to radio communications, if it is not installed and used in accordance with the instructions. However, there is no guarantee that interference will not occur in a particular installation. If this equipment does cause harmful interference to radio or television reception, which can be determined by turning the equipment off and on, the user is encouraged to try to correct the interference by one or more of the following measures:

- Reorient or relocate the receiving antenna.
- Increase the separation between the equipment and receiver.
- Connect the equipment into an outlet on a circuit different from that to which the receiver is connected.
- Consult the dealer or an experienced radio / TV technician for help.



As an ENERGY STAR® Partner, Kenwood Corporation has determined that this products meets the ENERGY STAR® guidelines for energy efficiency.

This product can save energy. Saving energy reduces air pollution and lowers utility bills.

**WARNING NOTICE:**

IN MOST CASES IT IS AN INFRINGEMENT OF COPYRIGHT TO MAKE COPIES OF TAPES OR DISCS WITHOUT THE PERMISSION OF THE COPYRIGHT OWNERS. ANYONE WISHING TO COPY COMMERCIALY AVAILABLE TAPES OR DISC SHOULD CONTACT THE MECHANICAL COPYRIGHT PROTECTION SOCIETY LIMITED OR THE PERFORMING RIGHTS SOCIETY LIMITED.

Dolby noise reduction manufactured under license from Dolby Laboratories. "DOLBY" and the double-D symbol are trademarks of Dolby Laboratories.



What seems to be a malfunction is not always so. Before calling for service, check the following table according to the symptom of your trouble.

### Operation to reset

The microcomputer may fall into malfunction (impossibility to operate, erroneous display, etc.) when the power cord is unplugged while unit is ON or due to an external factor. In this case, execute the following procedure to reset the microcomputer and return it to normal condition.

- Please note that resetting the microcomputer clears the contents stored in and it returns to condition when it left the factory.

**Unplug the power cord from the power outlet then, while holding the CD Open close (▲) key depressed, plug the power cord again. After some time, the power will be switched off and return will be made to the initial status.**


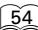
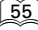

### Amplifier section/Speakers

Symptom	Cause	Remedy
Sound is not produced.	<ul style="list-style-type: none"> <li>● The speaker cords are disconnected.</li> <li>● The volume control is set to the minimum position.</li> <li>● The <b>MUTE</b> key is switched ON.</li> <li>● The headphone plug is inserted into the jack.</li> <li>● The speaker cords are short-circuited.</li> </ul>	<ul style="list-style-type: none"> <li>● Connect properly referring to "<b>System connection</b>". → 8</li> <li>● Adjust to an required volume.</li> <li>● Switch <b>MUTE</b> OFF. → 17</li> <li>● Unplug the headphone plug.</li> <li>● Turn the unit OFF, remove the short-circuit and turn the unit ON again.</li> </ul>
No sound from the headphones.	<ul style="list-style-type: none"> <li>● Imperfect insertion.</li> </ul>	<ul style="list-style-type: none"> <li>● Insert correctly. → 17</li> </ul>
Sound is not produced from the left or right speakers.	<ul style="list-style-type: none"> <li>● The speaker cords are disconnected.</li> <li>● The <b>BALANCE</b> is set completely to the left or right channel.</li> </ul>	<ul style="list-style-type: none"> <li>● Connect properly referring to "<b>System connection</b>". → 8</li> <li>● Adjust the optimum left and right balance. → 17</li> </ul>




### Tuner section

Symptom	Cause	Remedy
The clock display blinks without changing the figures.	<ul style="list-style-type: none"> <li>● There was a power failure.</li> <li>● The power cord was unplugged from the outlet.</li> </ul>	<ul style="list-style-type: none"> <li>● Adjust the present time again. → 14</li> <li>● Adjust the present time again.</li> </ul>
Timer operation is not possible.	<ul style="list-style-type: none"> <li>● The present time has not been adjusted or there was a power failure.</li> <li>● The timer ON time and OFF time have not been set.</li> <li>● The timer execution was not set up.</li> </ul>	<ul style="list-style-type: none"> <li>● Adjust the present time referring to "<b>Clock adjustment</b>". → 14</li> <li>● Set the timer ON time and OFF time. → 45</li> <li>● Press the <b>ON STANDBY</b> key to set up the execution.</li> </ul>
Radio stations cannot be received.	<ul style="list-style-type: none"> <li>● The antennas have not been connected.</li> <li>● A proper broadcasting band has not been selected.</li> <li>● The frequency of the station to be received is not tuned.</li> </ul>	<ul style="list-style-type: none"> <li>● Connect antennas. → 7</li> <li>● Select a band. → 18</li> <li>● Tune to the frequency of the desired station.</li> </ul>
Noise interferes.	<ul style="list-style-type: none"> <li>● Car ignition noise.</li> <li>● Influence of an electric appliance.</li> <li>● A TV set is installed near the system.</li> </ul>	<ul style="list-style-type: none"> <li>● Install the outdoor antenna in an apart position from the road.</li> <li>● Switch the suspected electric appliance OFF.</li> <li>● Install the TV or the system at an increased distance between them.</li> </ul>
A station has been preset but it cannot be received by pressing the PCALL key.	<ul style="list-style-type: none"> <li>● The frequency of the preset station is not tunable.</li> <li>● The preset memory has been cleared because the power cord has been unplugged for a long period.</li> </ul>	<ul style="list-style-type: none"> <li>● Preset stations with tunable frequencies.</li> <li>● Preset stations again. → 20</li> </ul>

**CD player section**

Symptom	Cause	Remedy
<b>A CD is placed in the player but it cannot be played.</b>	<ul style="list-style-type: none"> <li>● The disc is placed upside down.</li> <li>● The disc position is displaced.</li> <li>● The disc is extremely dirty.</li> <li>● The disc is scratched.</li> <li>● Dew is condensed on the optics lens.</li> </ul>	<ul style="list-style-type: none"> <li>● Place the disc properly, with the label side facing upward.</li> <li>● Place the disc properly.</li> <li>● Clean the disc referring to <b>"Disc handling precautions"</b>. →  55</li> <li>● Try another disc.</li> <li>● Refer to <b>"Caution on condensation"</b> and remove the condensation by evaporation. →  54</li> </ul>
<b>Sound is not produced.</b>	<ul style="list-style-type: none"> <li>● The disc has not been placed.</li> <li>● The player is not put to the play mode.</li> <li>● The disc is extremely dirty.</li> <li>● The disc is scratched.</li> </ul>	<ul style="list-style-type: none"> <li>● Place a disc in the CD player.</li> <li>● Press the ►/   key.</li> <li>● Clean the disc referring to <b>"Disc handling precautions"</b>. →  55</li> <li>● Try another disc.</li> </ul>
<b>Sound skips.</b>	<ul style="list-style-type: none"> <li>● The disc is dirty.</li> <li>● The disc is scratched.</li> <li>● The player is subject to vibration.</li> </ul>	<ul style="list-style-type: none"> <li>● Clean the disc referring to <b>"Disc handling precautions"</b>. →  55</li> <li>● Try another disc.</li> <li>● Install the unit in a place not subject to vibrations.</li> </ul>
<b>"Text Full" is displayed</b>	<ul style="list-style-type: none"> <li>● Too much text data has been stored.</li> </ul>	<ul style="list-style-type: none"> <li>● This is not a malfunction.</li> </ul>

**Remote control unit**

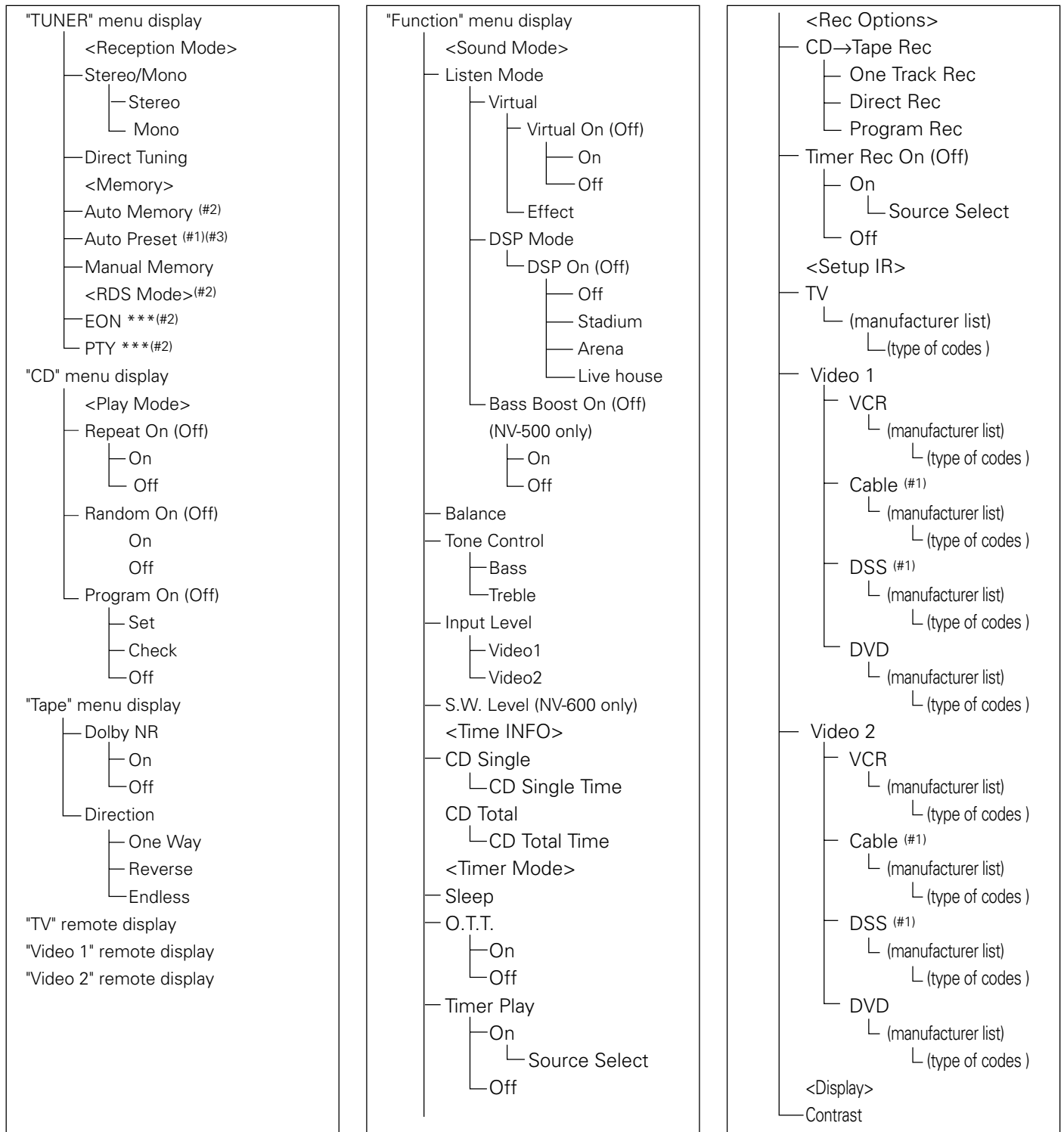
Symptom	Cause	Remedy
<b>Remote control operation is not possible.</b>	<ul style="list-style-type: none"> <li>● Batteries are exhausted.</li> <li>● The remote control is too far away from the system, the controlling angle is deviated or there is an obstacle in between.</li> <li>● The component to be played is not loaded with a CD or cassette tape.</li> </ul>	<ul style="list-style-type: none"> <li>● Replace with new batteries. →  12</li> <li>● Operate the unit inside the remote controllable range. →  12</li> <li>● Load a CD or cassette tape in the component to be played.</li> </ul>
<b>The "Low Battery" alarm is displayed.</b>	<ul style="list-style-type: none"> <li>● Batteries are exhausted.</li> </ul>	<ul style="list-style-type: none"> <li>● Replace with new batteries. →  12</li> </ul>

## Cassette deck

Symptom	Cause	Remedy
<b>Sound cannot be produced by pressing the play key.</b>	<ul style="list-style-type: none"> <li>● The head is dirty.</li> <li>● The tape is wound too tight due to irregular winding.</li> <li>● A nonrecorded tape is played.</li> </ul>	<ul style="list-style-type: none"> <li>● Clean the head referring to <b>"Maintenance"</b>. → 54</li> <li>● Try another tape.</li> <li>● Play a recorded tape.</li> </ul>
<b>No operation occurs even when an operation key is pressed.</b>	<ul style="list-style-type: none"> <li>● The cassette holder is not closed completely.</li> <li>● The operation key is pressed immediately after closing the cassette holder.</li> <li>● The operation key is pressed in less than 4 seconds after turning the power ON.</li> <li>● A tape is not inserted in the unit.</li> <li>● The tape is wound too tight due to irregular winding.</li> <li>● The tape is fully wound to one of the reels.</li> </ul>	<ul style="list-style-type: none"> <li>● Close the holder completely. → 24</li> <li>● Press operation keys in more than a few seconds after closing the cassette holder.</li> <li>● Press operation keys after waiting for more than 4 seconds.</li> <li>● Insert a tape. → 24</li> <li>● Try another tape.</li> <li>● Change the tape transport direction or reverse the tape insertion orientation. → 24</li> </ul>
<b>The cassette holders cannot be opened by pressing the "PUSH OPEN" area.</b>	<ul style="list-style-type: none"> <li>● The key is pressed during recording or playback.</li> <li>● The microcomputer is malfunctioning due to external noise.</li> </ul>	<ul style="list-style-type: none"> <li>● Press in stop mode.</li> <li>● Reset the microcomputer. → 57</li> </ul>
<b>Sound is harsh or high frequencies are not reproduced.</b>	<ul style="list-style-type: none"> <li>● The head is dirty.</li> <li>● The tape is stretched or shrunk.</li> </ul>	<ul style="list-style-type: none"> <li>● Clean the head referring to <b>"Maintenance"</b>. → 54</li> <li>● Try another tape.</li> </ul>
<b>Sound is distorted.</b>	<ul style="list-style-type: none"> <li>● The recording level has not been adjusted. (During Video 1, Video 2 input operation)</li> <li>● The tape being played was recorded with distorted sound.</li> </ul>	<ul style="list-style-type: none"> <li>● Adjust the Video 1, Video 2 input level.</li> <li>● Try another tape.</li> </ul>
<b>Noise is noticeable.</b>	<ul style="list-style-type: none"> <li>● The tape head is magnetized.</li> <li>● External noise is induced.</li> <li>● A tape recorded with Dolby NR ON is played with <b>"Dolby NR"</b> off.</li> </ul>	<ul style="list-style-type: none"> <li>● Demagnetize the head referring to <b>"Maintenance"</b>. → 54</li> <li>● Install the system at a distance from other electric appliances and TV. → 25</li> <li>● Set the <b>"Dolby NR"</b> to on.</li> </ul>
<b>Sound vibrates.</b>	<ul style="list-style-type: none"> <li>● The capstans or pinch rollers are dirty.</li> <li>● The tape is wound irregularly.</li> </ul>	<ul style="list-style-type: none"> <li>● Clean the head referring to <b>"Maintenance"</b>. → 54</li> <li>● Wind the tape again by fast forwarding, rewinding or playing from an end to the other. → 25</li> </ul>
<b>Recording cannot be started by pressing the record key.</b>	<ul style="list-style-type: none"> <li>● The recording protect tab of the cassette has been broken.</li> <li>● The cassette holder is not closed completely.</li> <li>● The <b>TAPE</b> input is selected.</li> <li>● The tape is fully wound to one of the reels.</li> </ul>	<ul style="list-style-type: none"> <li>● Use a cassette with an unbroken recording protect tab or block the hole. → 55 → 24</li> <li>● Close the holder completely.</li> <li>● Set the input selector to the source to be recorded. → 26</li> <li>● Change the tape transport direction or reverse the tape insertion orientation. → 26</li> </ul>

- [A]**
- A.R.M. .... 27
  - ACTIVE indicator ..... 11
  - Adjusting the display contrast ..... 49
  - Adjusting the external input level ..... 40
  - Adjusting the left and right volume balance ..... 17
  - Adjusting the subwoofer output level ..... 40
  - AI timer playback ..... 45
  - Auto preset ..... 20
- [B]**
- Basic use method ..... 16
- [C]**
- Cable Tuner control screen ..... 53
  - CD direct recording ..... 37
  - CD one-track recording ..... 38
  - CD program recording ..... 39
  - CHANNEL SPACE setting ..... 10
  - Checking the time information display of CD ..... 48
  - Cleaning the head section ..... 54
  - Clock adjustment ..... 14
  - Communication indicator ..... 11
  - CONFIRM/DEMO key ..... 6,13
- [D]**
- Demonstration ..... 6
  - Disc handling precautions ..... 55
  - Dolby Virtual setting ..... 42
  - DSP mode setting ..... 43
  - DSS control screen ..... 53
  - DVD control screen ..... 53
- [E]**
- EON ..... 30
- [F]**
- Fast forwarding/rewinding or skipping tape ..... 25
- [H]**
- HOME key ..... 13
- [I]**
- In regard to CD-TEXT ..... 23
- [M]**
- Maintenance ..... 54
  - Manual preset ..... 21
- [N]**
- Normal timer playback ..... 45
  - Notes on cassette tape ..... 55
- [O]**
- O.T.T. .... 44
  - One-touch operation ..... 17
- [P]**
- Playback of CD ..... 22
  - Playback of tape ..... 24
  - Program playback ..... 32
  - PTY search ..... 29
- [R]**
- R.D.S. .... 28
  - Random playback ..... 35
  - RDS auto memory ..... 20
  - Receiving broadcast station ..... 18
  - Recording on TAPE ..... 26
  - Reference ..... 54
  - Remote control of external components ..... 50
  - Repeated playback ..... 34
- [S]**
- Selecting Dolby NR ..... 25
  - Selecting the bass boost ..... 41
  - Selecting the reverse mode ..... 25
  - Setting the timer playback ..... 45
  - Skipping tracks ..... 23
  - Sleep Timer (Sleep) ..... 46
  - Specifications ..... 62
  - Standby mode ..... 17
  - STANDBY/TIMER indicator ..... 17
  - Switching between stereo tuning and monaural tuning ..... 19
- [T]**
- Timer operation ..... 44
  - Timer recording ..... 47
  - To eject the disc ..... 23
  - To pause playback (CD) ..... 23
  - To receive a station that has not been preset ..... 19
  - To stop playback (CD) ..... 23
  - To stop playback (Tape) ..... 24
  - Tone adjustment ..... 41
  - TV control screen ..... 53
- [V]**
- VCR control screen ..... 53
  - Volume adjustment ..... 16

## Menu display chart



(#1) : This mark refers to item for the U.S.A. and Canada.

(#2) : This mark refers to item for Europe and U.K.

(#3) : This mark refers to item for other countries.

## NV-600

### Main unit (RXD-NV600)

#### [Amplifier section]

##### Output power

(U.S.A. and Canada)

Rated output power (front channel only)

30 watts per channel minimum RMS, both channels driven, at 8 Ω from 100 Hz to 20 kHz with no more than 0.9% total harmonic distortion.(FTC)

##### Effective output power

###### FRONT

(1 kHz, 10 % T.H.D., at 8 Ω) ..... 40 W + 40 W

###### SUBWOOFER

(65 Hz, 10 % T.H.D., at 4 Ω) ..... 80 W

(Europe and U.K.)

Rated output power (front channel only) (DIN)

(1 kHz, 0.7 % T.H.D., at 8 Ω) ..... 35 W + 35 W

##### Effective output power

###### FRONT

(1 kHz, 10 % T.H.D., at 8 Ω) ..... 40 W + 40 W

###### SUBWOOFER

(65 Hz, 10 % T.H.D., at 4 Ω) ..... 80 W

(Other countries)

Rated output power during (front channel only)

(1 kHz, 1 % T.H.D., at 8 Ω) ..... 35 W + 35 W

Effective output power during STEREO operation

###### FRONT

(1 kHz, 10 % T.H.D., at 8 Ω) ..... 40 W + 40 W

###### SUBWOOFER

(65 Hz, 10 % T.H.D., at 4 Ω) ..... 80 W

#### Frequency response

##### FRONT

(VIDEO1/VIDEO2) ... 100 Hz ~ 40 kHz (+0 dB ~ -3 dB)

##### SUBWOOFER

(VIDEO1/VIDEO2) ..... 5 Hz ~ 100 Hz (+0 dB ~ -3 dB)

#### Signal to noise ratio

VIDEO1/VIDEO2 ..... 90 dB

#### Input sensitivity/impedance

##### VIDEO1/VIDEO2

(U.S.A, Canada, Europe and U.K.) .... 230 mV/47 kΩ

(Other countries) ..... 200 mV/47 kΩ

#### Output level/impedance

##### REC OUT (VIDEO1)

(U.S.A, Canada, Europe and U.K.) .... 230 mV/470 Ω

(Other countries) ..... 200 mV/470 Ω

#### [Video section]

##### Input / Output VIDEO

(Composite) ..... 1 Vp-p/75 Ω

#### [Tuner section]

##### FM tuner section

Tuning frequency range ..... 87.5 MHz ~ 108 MHz

##### MW (AM) tuner section

###### Tuning frequency range

(For U.S.A and Canada) ..... 530 kHz ~ 1,700 kHz

(For Europe and U.K.) ..... 531 kHz ~ 1,602 kHz

(For other countries)

9 kHz step ..... 531 kHz ~ 1,602 kHz

10 kHz step ..... 530 kHz ~ 1,610 kHz

##### LW tuner section (For U.K. only)

Tuning frequency range ..... 153 kHz ~ 279 kHz

#### [CD player section]

Laser ..... Semiconductor laser

Wow and flutter ..... Unmeasurable limit

#### [Cassette deck section]

Track ..... 4 track, 2 channel stereo

Recording system ..... AC bias system  
(Frequency: 105 kHz)

##### Heads

Playback / recording head ..... 1

Erasing head ..... 1

Motor ..... 1

Fast winding time ..... Approx. 110 seconds  
(C-60 tape)

#### [General]

Power consumption ..... 100 W

Dimensions (Attached the remote control unit)

..... W : 285 mm (11-1/4")

H : 252 mm (9-15/16")

D : 368 mm (14-1/2")

Weight (Include the remote control unit) ..... 8.4 kg

## Speakers (LS-NV600S)

#### [Satellite speaker system]

Enclosure ..... Bass-reflex type, magnetically shielded

##### Speaker configuration

Woofers ..... 80 mm (3-1/8"), cone type

Tweeter ..... 19 mm (3/4"), dome type

Impedance ..... 8 Ω

Maximum input level ..... 40 W

Dimensions ..... W: 158 mm (6-1/4")

H: 257 mm (10-1/8")

D: 152 mm (6")

Weight (net) .... 2.0 kg (1 piece/including the speaker stand)

#### [Subwoofer system]

Enclosure ..... Bass-reflex type, magnetically shielded

##### Speaker configuration

Woofers ..... 160 mm (6-1/2"), cone type

Impedance ..... 4 Ω

Maximum input level ..... 80 W

Dimensions ..... W: 206 mm (8-1/8")

H: 280 mm (11")

D: 387 mm (15-1/4")

Weight (net) ..... 6.5 kg (1 piece)



KENWOOD follows a policy of continuous advancements in development. For this reason specifications may be changed without notice.

- Sufficient performance may not be exhibited at extremely cold locations (where water freezes).

# NV-500

## Main unit (RXD-NV500) [Amplifier section]

### Output power

(U.S.A. and Canada)  
Rated output power

100 watts per channel minimum RMS, all channels driven, at 6 Ω from 40 Hz to 20 kHz with no more than 0.9% total harmonic distortion. (FTC)

(Europe and U.K.)

Rated output power (DIN)  
(1 kHz, 0.7 % T.H.D., at 6 Ω) ..... 70 W + 70 W

Effective output power  
(1 kHz, 10 % T.H.D., at 6 Ω) ..... 100 W + 100 W

(Other countries)

Rated output power  
(1 kHz, 1 % T.H.D., at 6 Ω) ..... 80 W + 80 W

Effective output power  
(1 kHz, 10 % T.H.D., at 8 Ω) ..... 100 W + 100 W

### Signal to noise ratio

VIDEO1/VIDEO2 ..... 90 dB

### Input sensitivity/impedance

VIDEO1/VIDEO2

(U.S.A and Canada) ..... 300 mV/47 kΩ

(Other countries) ..... 250 mV/47 kΩ

### Output level/impedance

REC OUT (VIDEO1)

(U.S.A and Canada) ..... 300 mV/470 Ω

(Other countries) ..... 250 mV/470 Ω

Super woofer preout

(U.S.A and Canada) ..... 1.8 V/3.3 kΩ

(Other countries) ..... 2 V/3.3 kΩ

## [Video section]

### Input/ Output

(Composite) ..... 1 Vp-p/75 Ω

## [Tuner section]

### FM tuner section

Tuning frequency range ..... 87.5 MHz ~ 108 MHz

### MW (AM) tuner section

Tuning frequency range

(U.S.A and Canada) ..... 530 kHz ~ 1,700 kHz

(Europe and U.K.) ..... 531 kHz ~ 1,602 kHz

(other countries)

9 kHz step ..... 531 kHz ~ 1,602 kHz

10 kHz step ..... 530 kHz ~ 1,610 kHz

### LW tuner section (For U.K. only)

Tuning frequency range ..... 153 kHz ~ 279 kHz

## [CD player section]

Laser ..... Semiconductor laser

Wow and flutter ..... Unmeasurable limit

## [Cassette deck section]

Track ..... 4 track, 2 channel stereo

Recording system ..... AC bias system  
(Frequency: 105 kHz)

### Heads

Playback / recording head ..... 1

Erasing head ..... 1

Motor ..... 1

Fast winding time ..... Approx. 110 seconds  
(C-60 tape)

## [General]

### Power consumption

(U.S.A. and Canada) ..... 160 W

(Other countries) ..... 130 W

### Dimensions (Attached the remote control unit)

..... W : 285 mm (11-1/4")

H : 252 mm (9-15/16")

D : 368 mm (14-1/2")

Weight (Include the remote control unit) ..... 8.4 kg

## Speakers (LS-NV500)

Enclosure ..... Bass-reflex type

### Speaker configuration

Woofer ..... 160 mm (6-1/2"), cone type

Tweeter ..... 25 mm (1"), dome type

Impedance ..... 6 Ω

Maximum input level ..... 100 W

Dimensions ..... W : 225 mm (8-7/8")

H : 350 mm (13-3/4")

D : 263 mm (10-3/8")

Weight (net) ..... 5.0 kg(1 piece)



KENWOOD follows a policy of continuous advancements in development. For this reason specifications may be changed without notice.

- Sufficient performance may not be exhibited at extremely cold locations (where water freezes).

---

# KENWOOD

***For your records***

Record the serial number, found on the back of the unit, in the spaces designated on the warranty card, and in the space provided below. Refer to the model and serial numbers whenever you call upon your dealer for information or service on this product.

Model \_\_\_\_\_ Serial Number \_\_\_\_\_



## Free Manuals Download Website

<http://myh66.com>

<http://usermanuals.us>

<http://www.somanuals.com>

<http://www.4manuals.cc>

<http://www.manual-lib.com>

<http://www.404manual.com>

<http://www.luxmanual.com>

<http://aubethermostatmanual.com>

Golf course search by state

<http://golfingnear.com>

Email search by domain

<http://emailbydomain.com>

Auto manuals search

<http://auto.somanuals.com>

TV manuals search

<http://tv.somanuals.com>