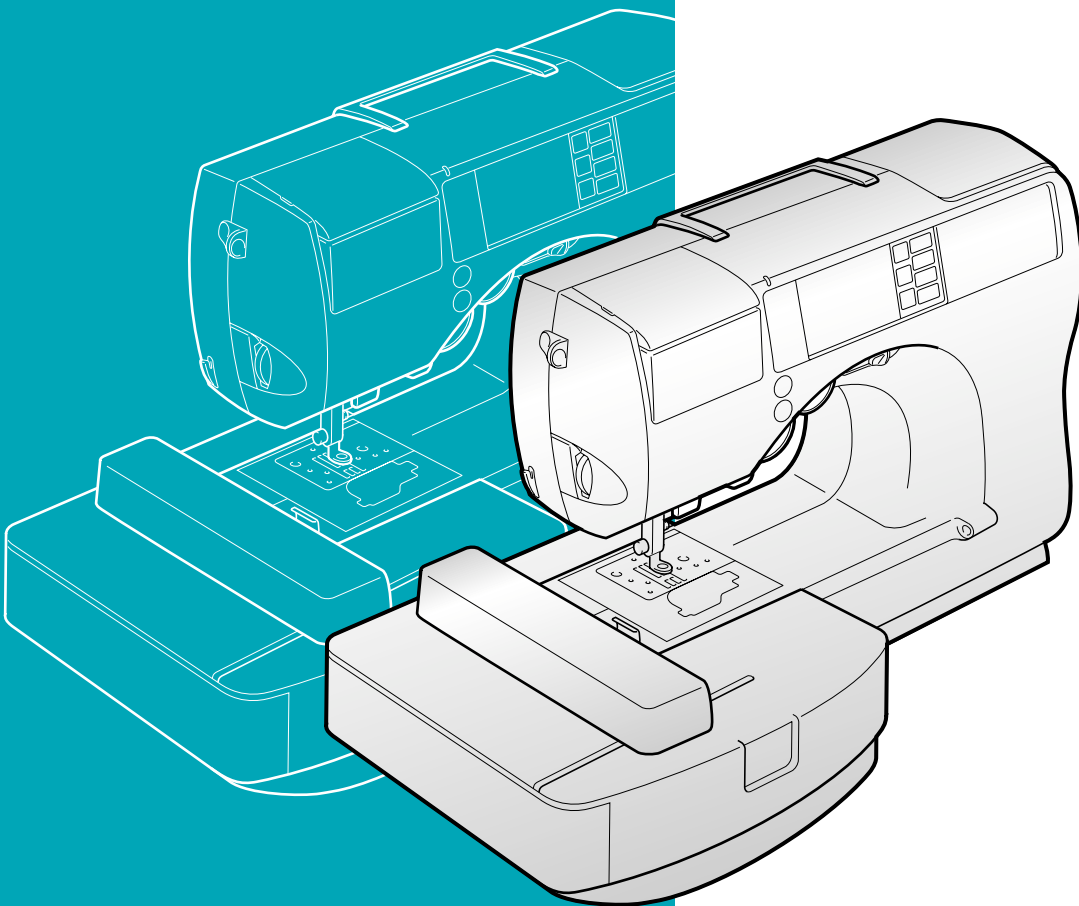


Quick Reference Guide

Guide de référence rapide
Kurzanleitung
Beknopte bedieningsgids
Guía de referencia rápida
Guida di riferimento rapido

brother®



Refer to the operation manual for detailed instruction.

Also, there are differences in the keys and screens depending on the display language. In this guide, English screens are used for basic explanations.

Pour les instructions détaillées, voir le manuel d'instructions.

Par ailleurs, il y a des différences dans les touches et les écrans en fonction de la langue d'affichage. Dans ce guide, les explications de base utilisent les écrans anglais.

Einzelheiten entnehmen Sie bitte der Bedienungsanleitung.

Je nachdem, welche Sprache für die Bildschirmanzeigen gewählt wurde, ergeben sich im Hinblick auf Tasten Schirmbilder eventuell Unterschiede.

Die grundlegende Bedienung der Maschine ist in dieser Anleitung am Beispiel von Schirmbildern mit englischem Text erklärt.

Zie de bedieningsanleitung voor gedetailleerde instructies.

Er zijn verschillen in de toetsen en schermen afhankelijk van de ingestelde taal.

In de beschrijvingen in deze beknopte handleiding worden de Engelse schermen gebruikt.

Consulte el manual de instrucciones para ver más detalles.

Además, dependiendo del idioma visualizado algunos botones y pantallas podrán ser diferentes.

En esta guía, para las explicaciones básicas se emplean pantallas en inglés.

Fare riferimento al manuale d'istruzioni per istruzioni dettagliate.

Inoltre, ci sono differenze nei tasti e nelle schermate a seconda della lingua visualizzata.

In questa guida, le schermate in inglese sono usate per le spiegazioni basilari.

Contents

Bobbin Winding	2
Upper Threading	5
Selecting Stitch Patterns	8
◆ Utility Stitches	8
Summary of Stitch Patterns	9
◆ Utility Stitches	9
Preparing to Embroider	10
Selecting Embroidery Patterns	13
Character Patterns	15
Frame patterns	18
Embroidery Pattern Color Change Table	19

Table des matières

Bobinage de la canette	2
Enfilage supérieur	5
Sélection des configurations de point	8
◆ Points utilitaires	8
Sommaires des motifs de point	9
◆ Points utilitaires	9
Préparation de la broderie	10
Sélection des motifs de broderie	13
Motifs de caractères	15
Motifs cadres	18
Tableau de changement de couleur des motifs de broderie	19

Inhalt

Aufspulen des Unterfadens	2
Einfädeln des Oberfadens	5
Wahl des Nähmusters	8
◆ Nutztiche	8
Nähmuster-Übersicht	9
◆ Nutztiche	9
Vorbereitung zum Sticken	10
Wählen von Stickmustern	13
Zeichenmuster	15
Rahmenmuster	18
Stickmuster-Farbtabelle	19

Inhoudsopgave

Opwinden van de spoel	2
Inrijgen van de bovendraad	5
Kiezen van de steekpatronen	8
◆ Naaisteken	8
Overzicht van de steekpatronen	9
◆ Naaisteken	9
Vorbereidingen voor borduren	10
Kiezen van borduurpatronen	13
Karakterpatronen	15
Kaderpatronen	18
Kleurwijzigingstabel voor de borduurpatronen ...	19

Contenido

Bobinado	2
Hilo superior	5
Selección de tipos de puntada	8
◆ Puntadas utiles	8
Resumen de tipos de puntada	9
◆ Puntadas utiles	9
Preparacion para bordar	10
Selección de diseños de bordados	13
Tipos de caracteres	15
Costuras de encuadre	18
Tabla de cambio de color para patrones de bordado	19

Indice

Avvolgimento spolina	5
Infilatura superiore	5
Selezione degli schemi punto	8
◆ Punti utili	8
Sommario degli schemi punto	9
◆ Punti utili	9
Preparativi per il ricamo	10
Selezione degli schemi di ricamo	13
Schemi con lettere	15
Motivi a cornicetta	18
Tabella di cambiamento colori degli schemi di ricamo	19

Bobbin Winding

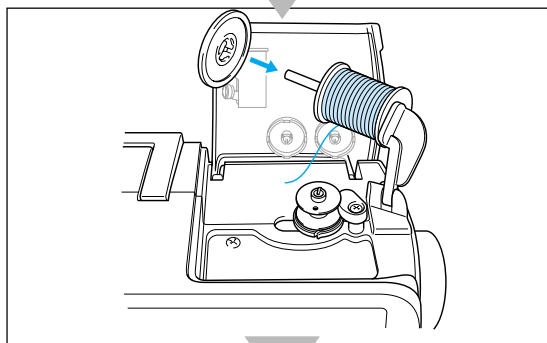
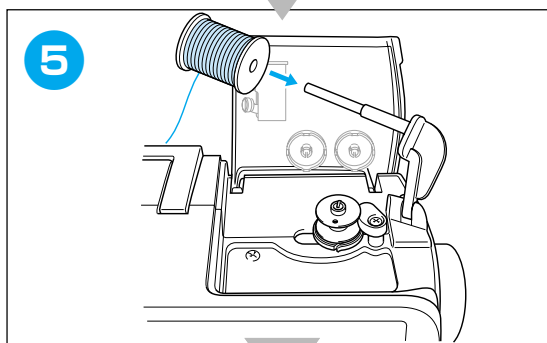
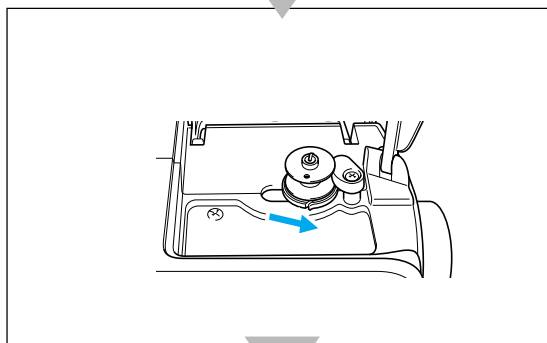
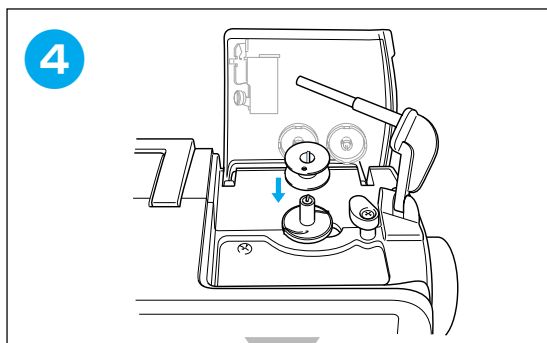
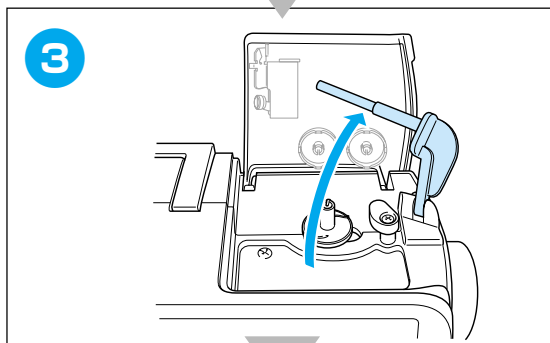
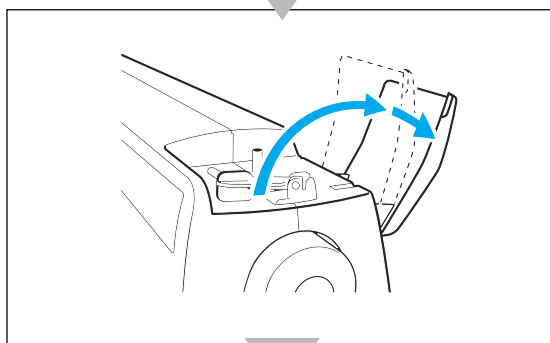
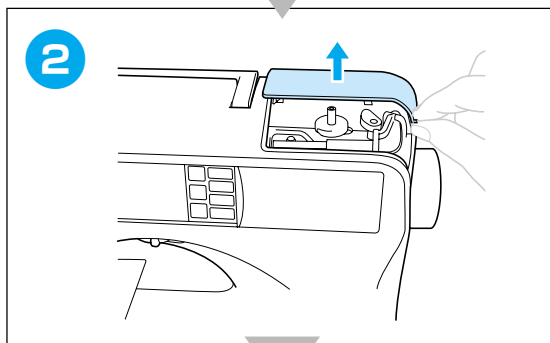
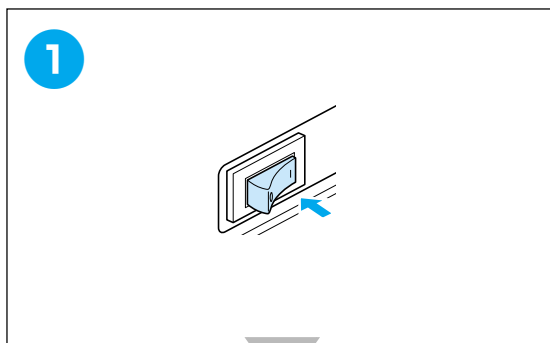
Bobinage de la canette

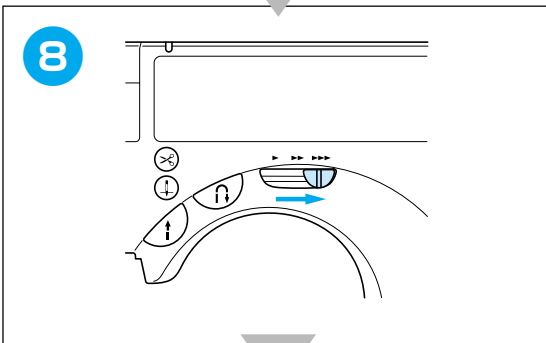
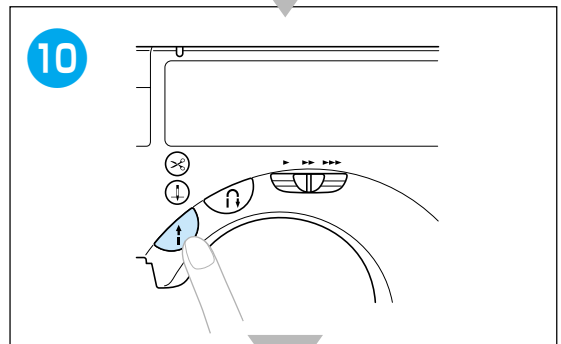
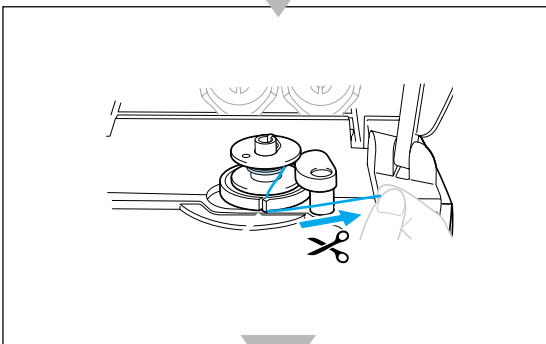
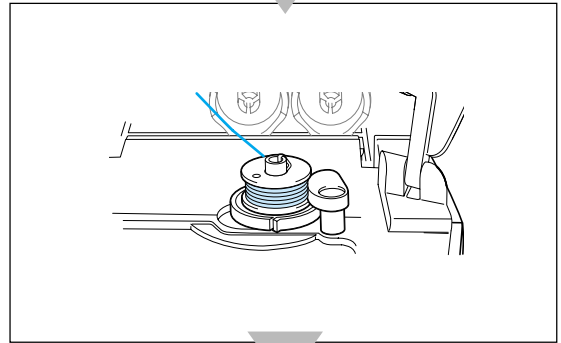
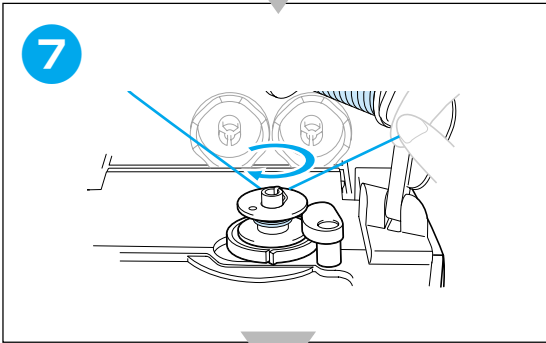
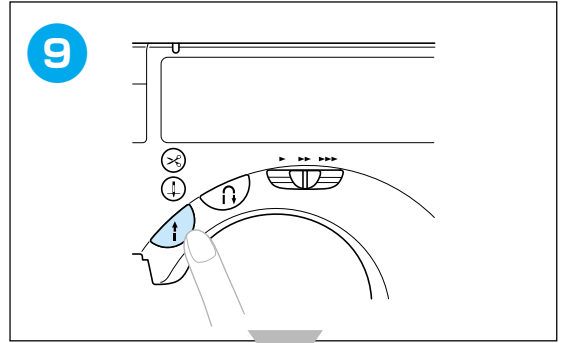
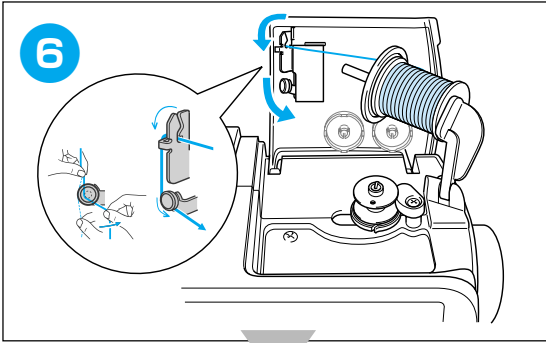
Aufspulen des Unterfadens

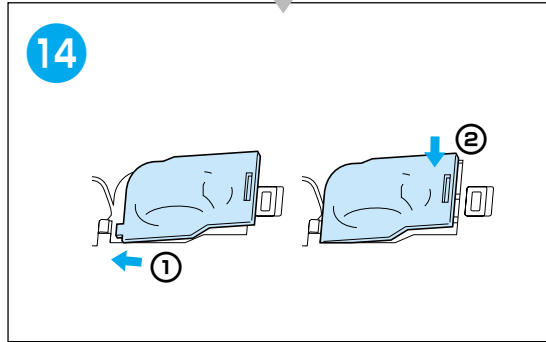
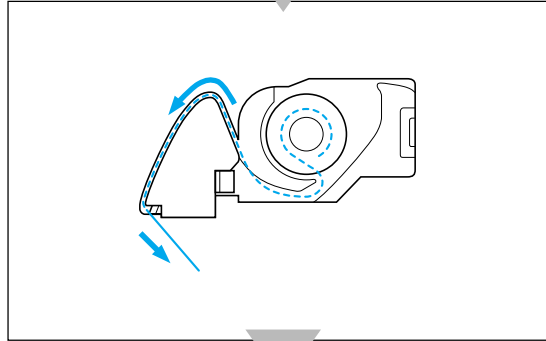
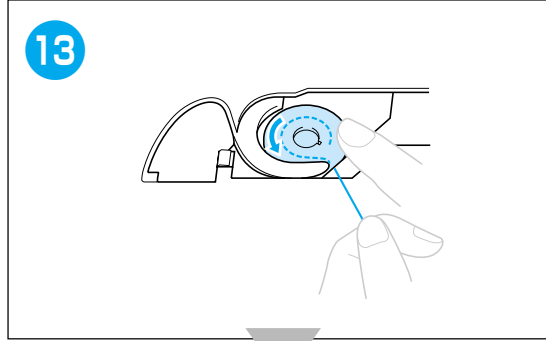
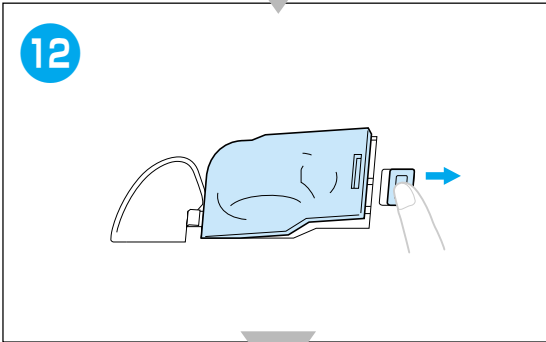
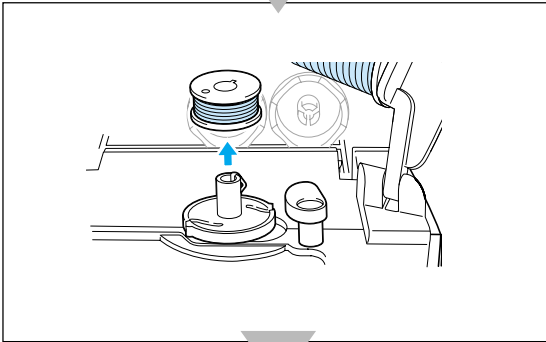
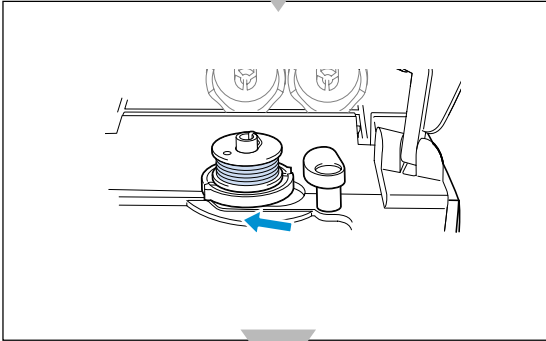
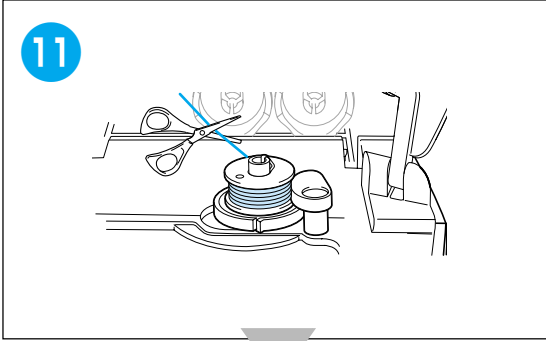
Opwinden van de spoel

Bobinado

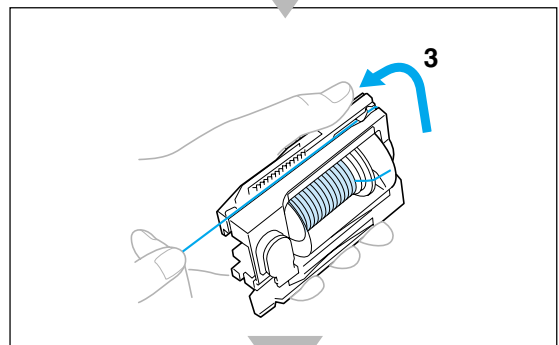
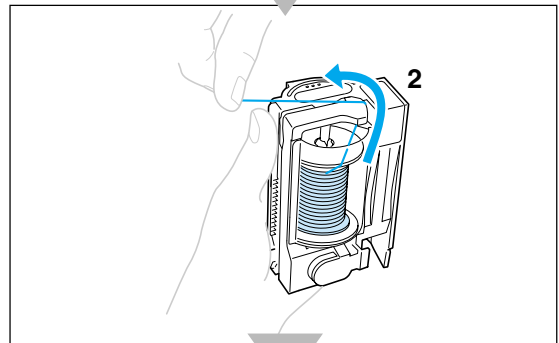
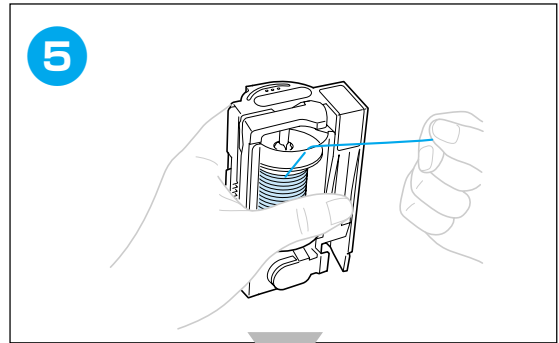
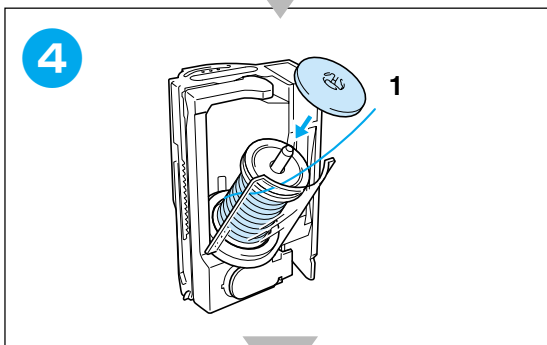
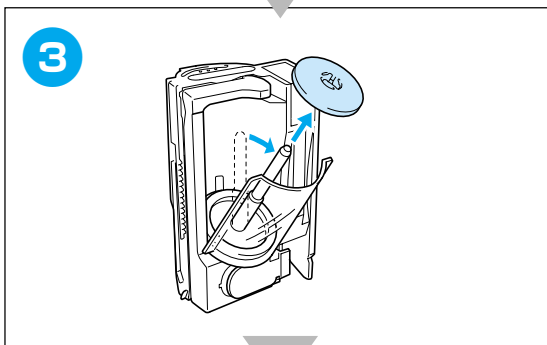
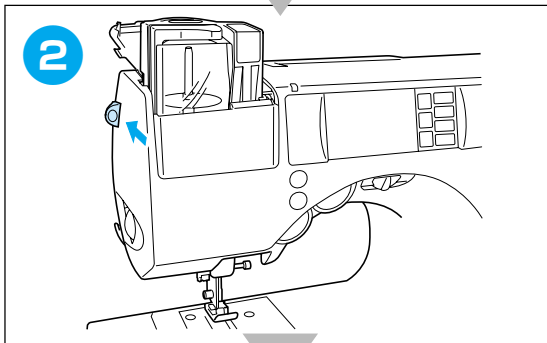
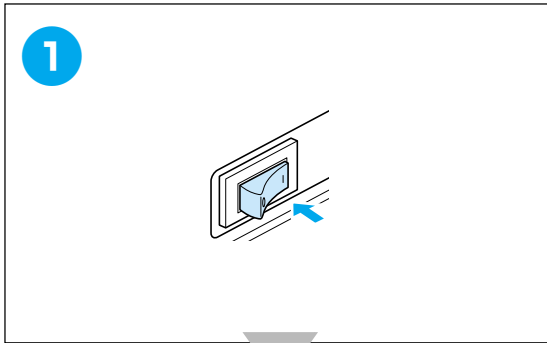
Avvolgimento spolina

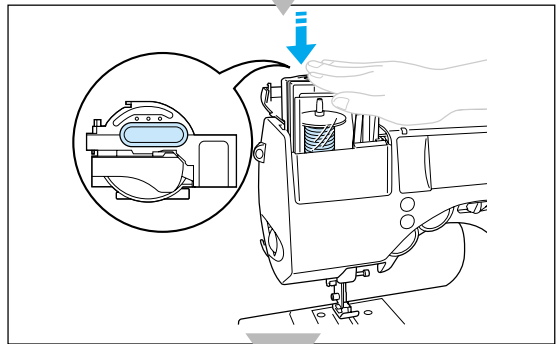
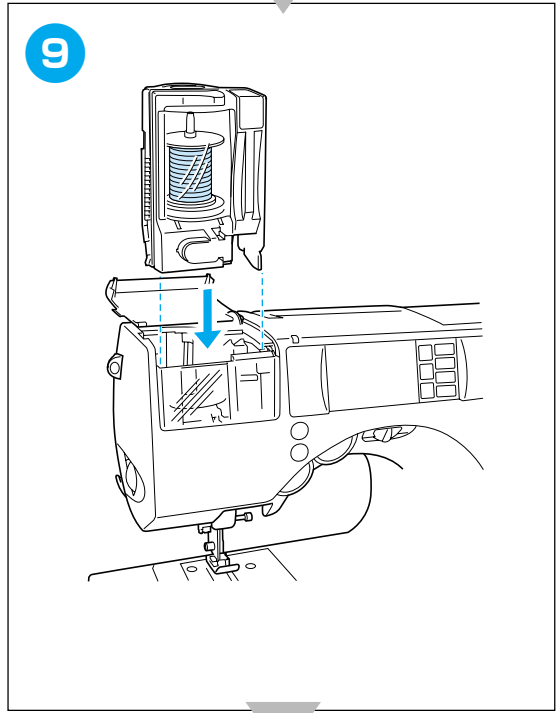
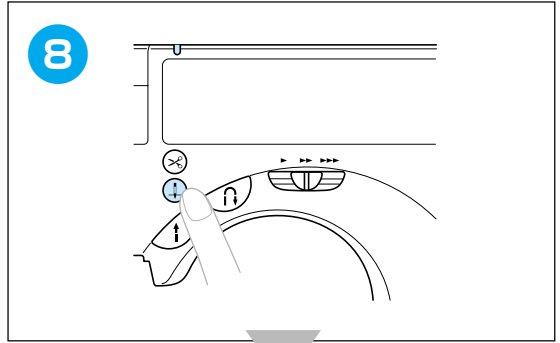
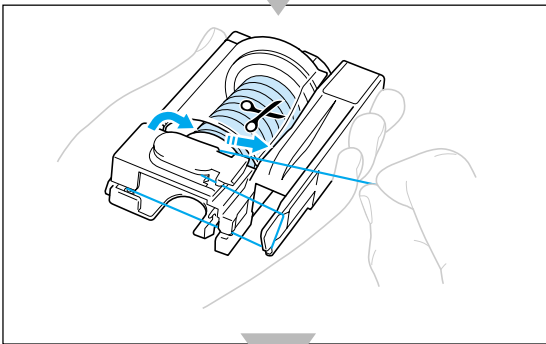
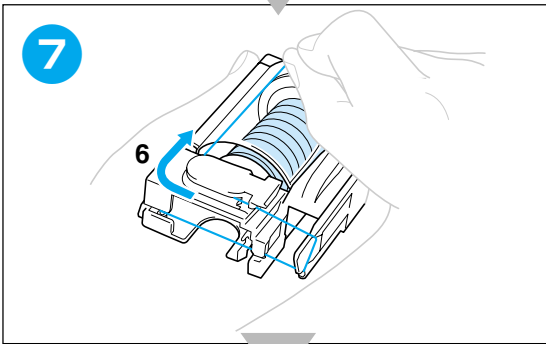
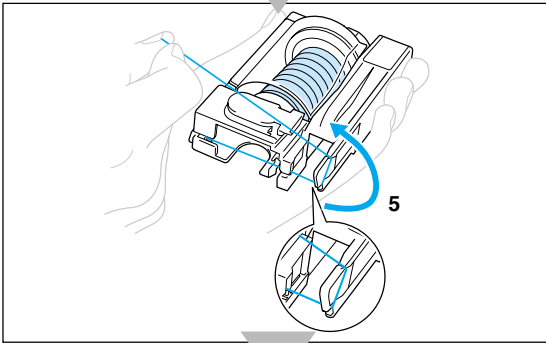
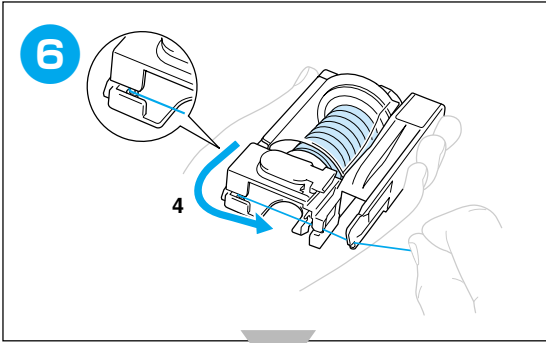


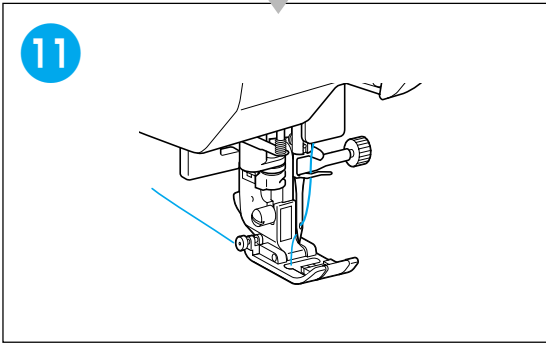
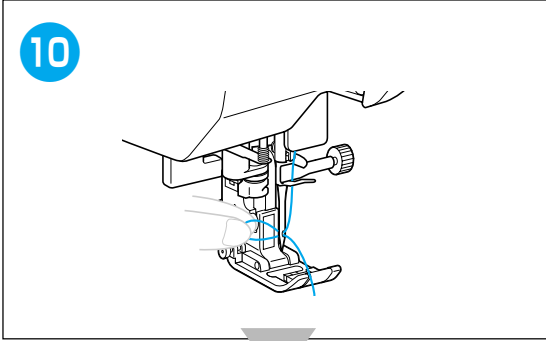




Upper Threading
Enfilage supérieur
Einfädeln des Oberfadens
Inrijgen van de bovendraad
Hilo superior
Infilatura superiore







Selecting Stitch Patterns

Sélection des configurations de point

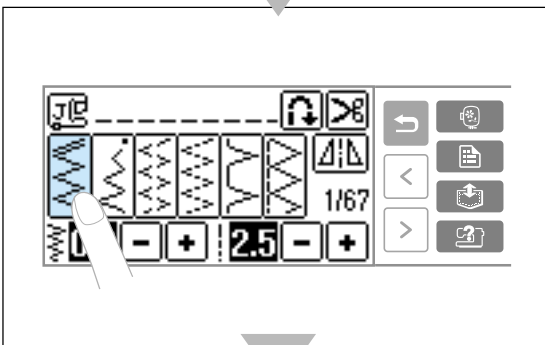
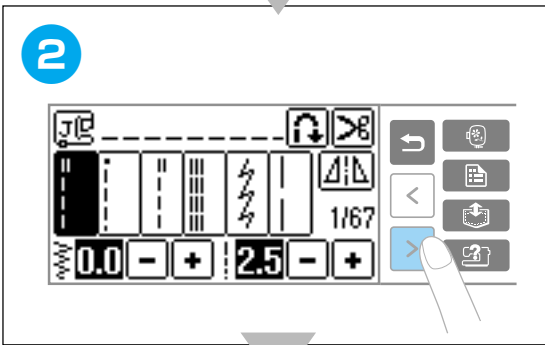
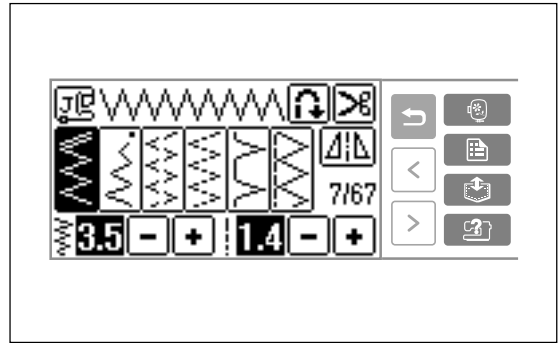
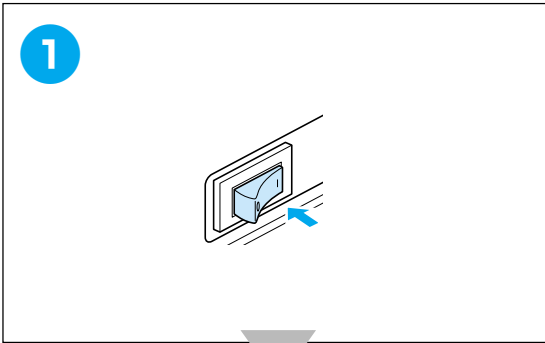
Wahl des Nähmusters

Kiezen van de steekpatronen

Selección de tipos de puntada

Selezione degli schemi punto

- ◆ Utility Stitches ◆ Points utilitaires
- ◆ Nutzstiche ◆ Naaisteken
- ◆ Puntadas utiles ◆ Punti utili



Summary of Stitch Patterns

Sommaires des motifs de point

Nähmuster-Übersicht

Overzicht van de steekpatronen

Resumen de tipos de puntada

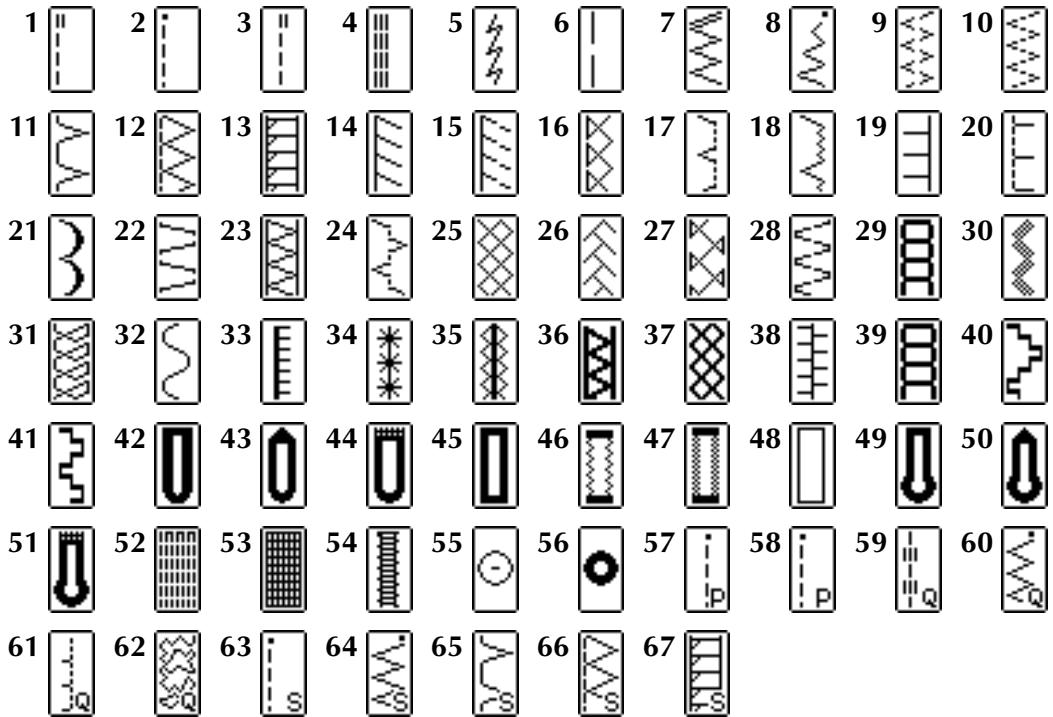
Sommario degli schemi punto



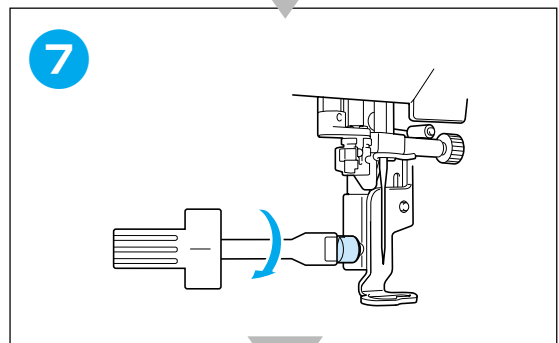
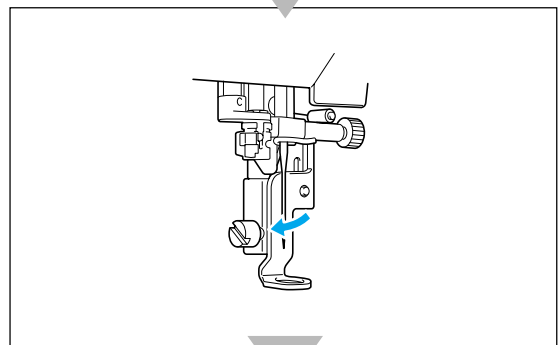
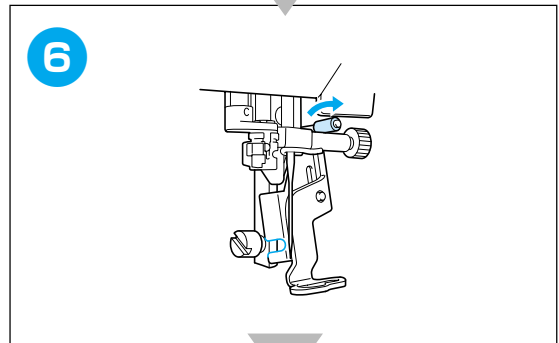
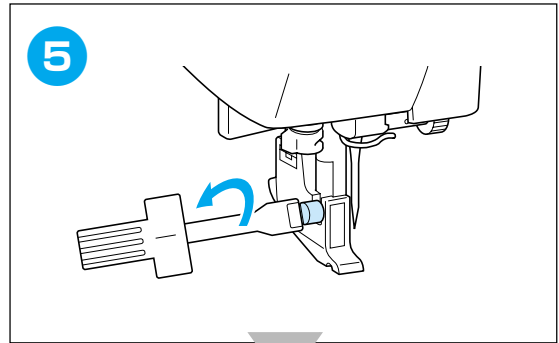
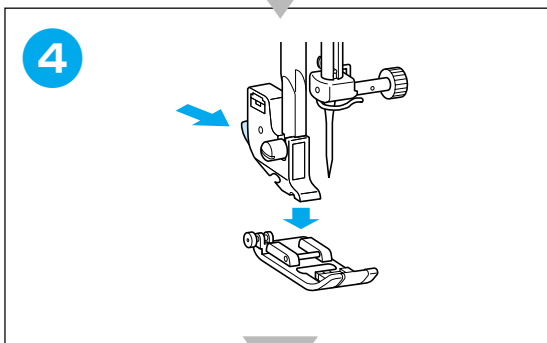
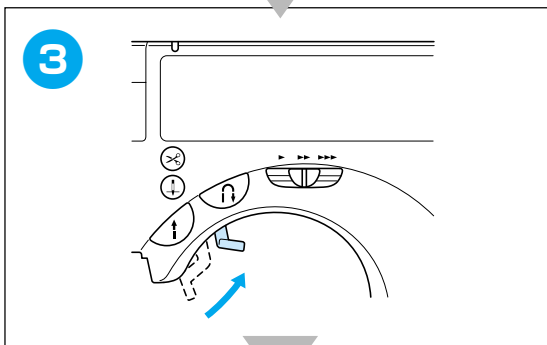
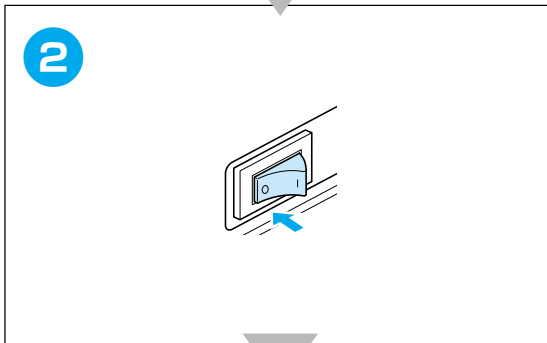
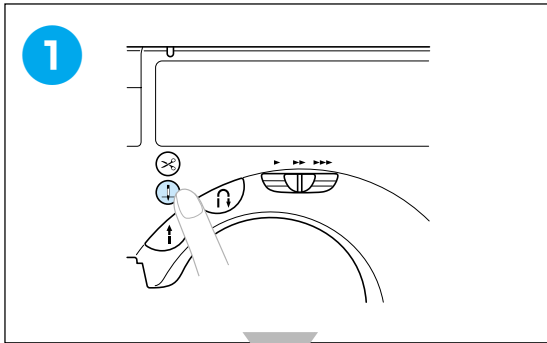
◆ Utility Stitches
◆ Naaisteken

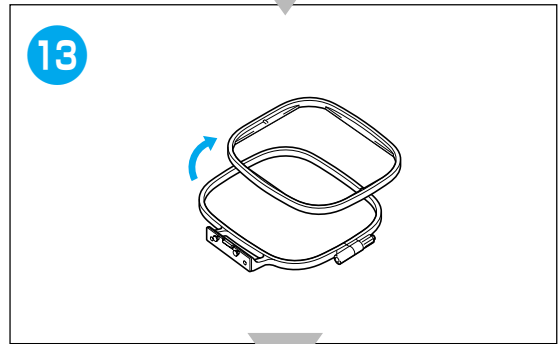
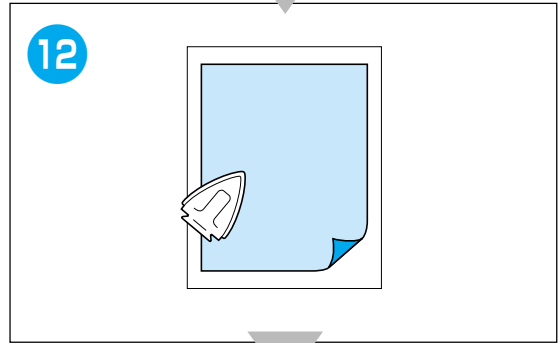
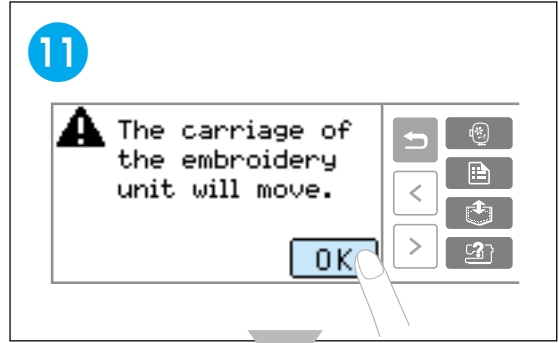
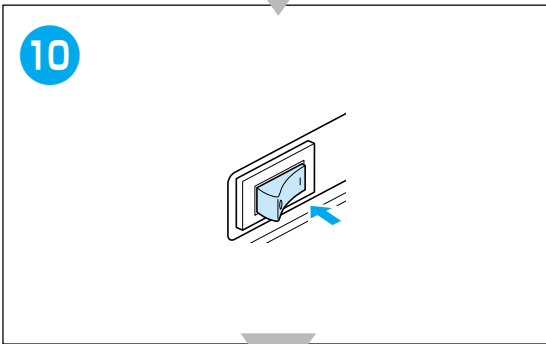
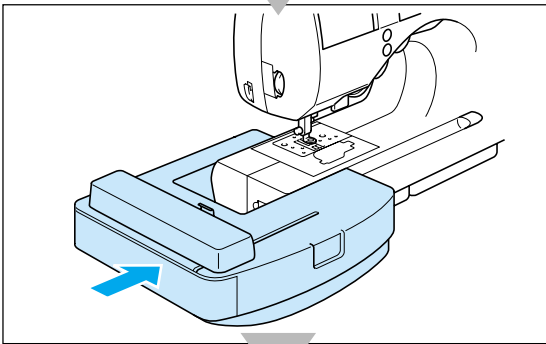
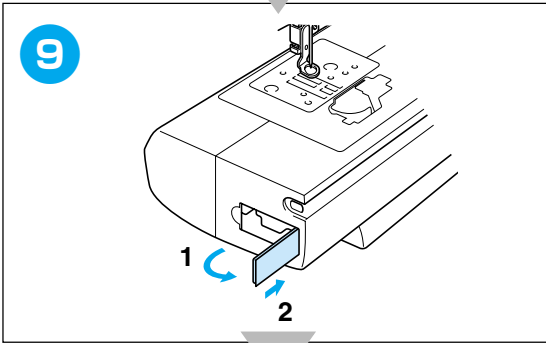
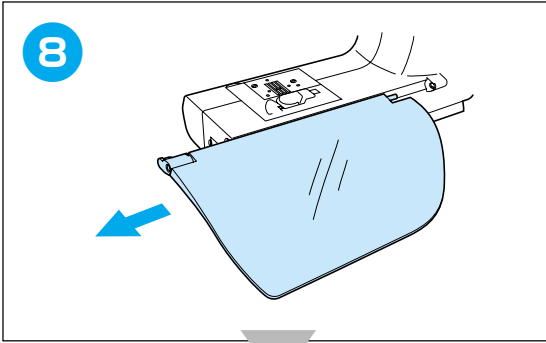
◆ Points utiles
◆ Puntadas utiles

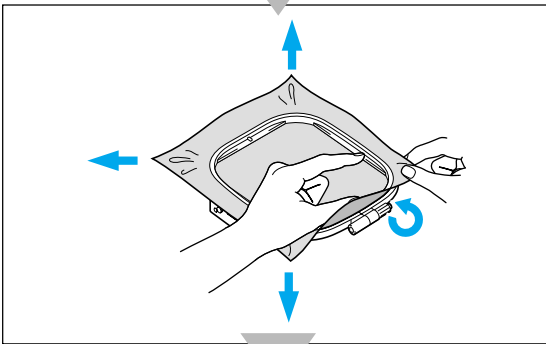
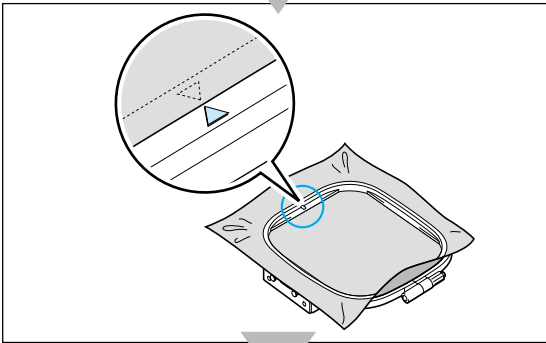
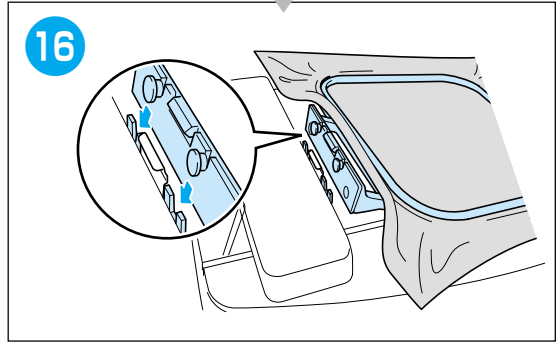
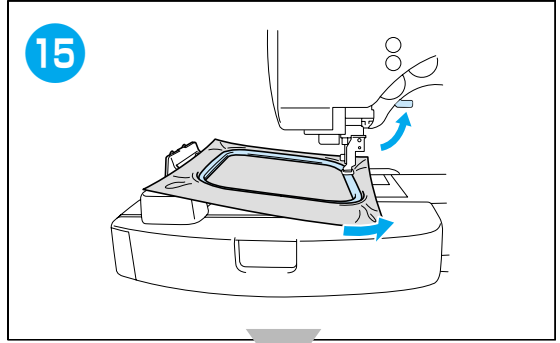
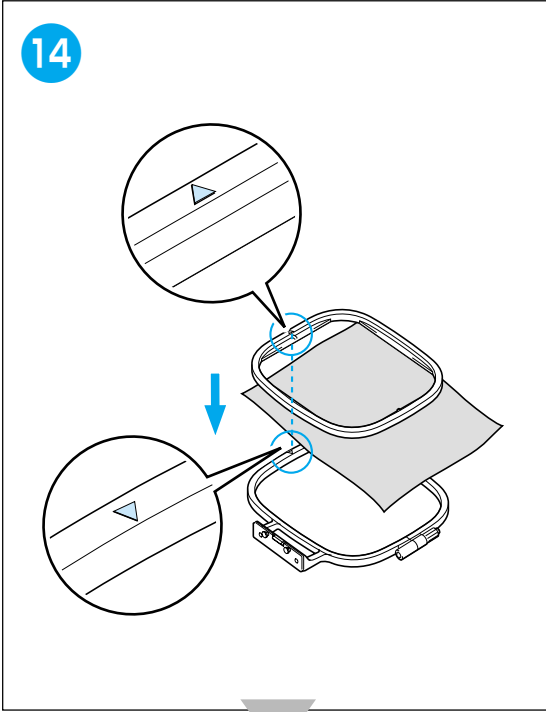
◆ Nutzstiche
◆ Punti utili



Preparing to Embroider
Préparation de la broderie
Vorbereitung zum Sticken
Vorbereidingen voor borduren
Preparacion para bordar
Preparativi per il ricamo







Selecting Embroidery Patterns

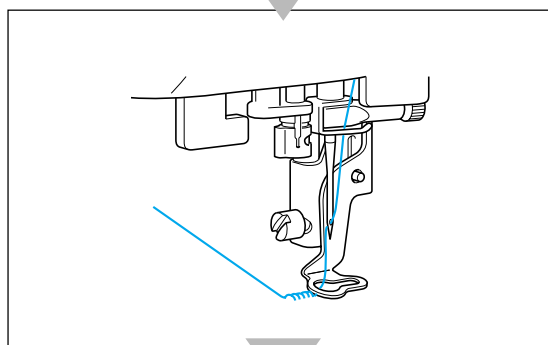
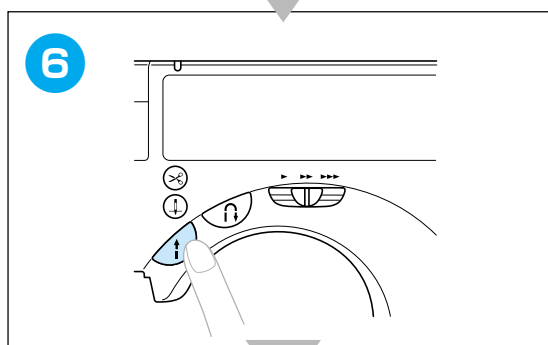
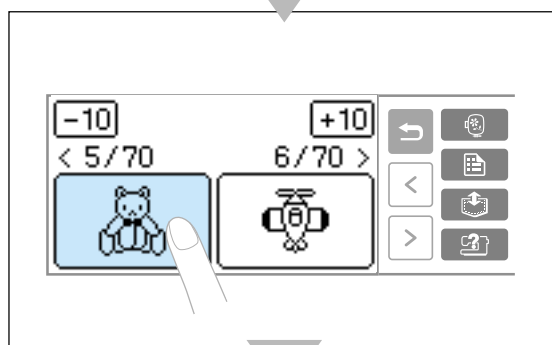
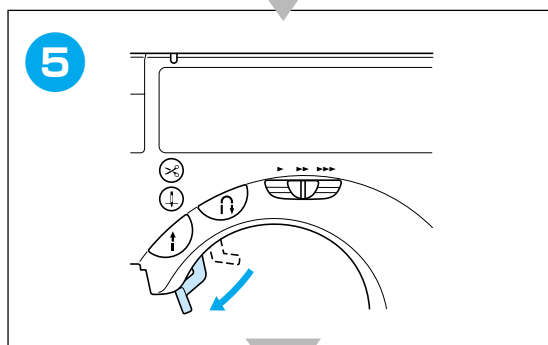
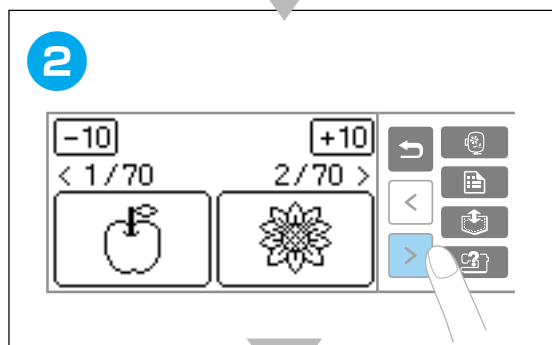
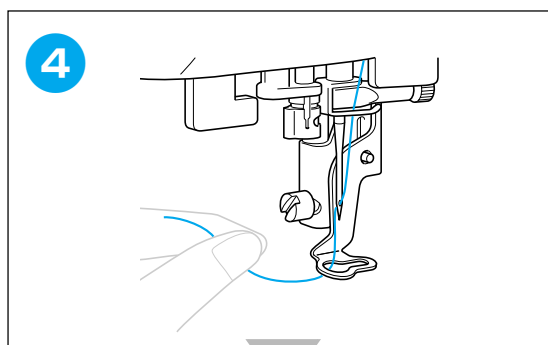
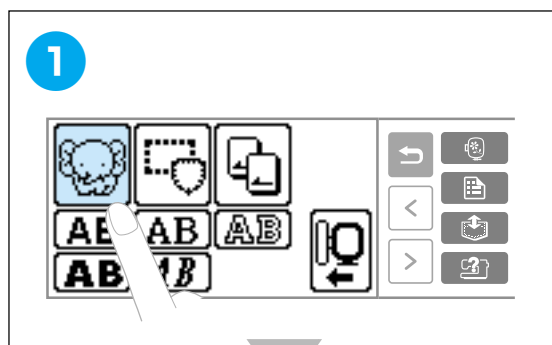
Sélection des motifs de broderie

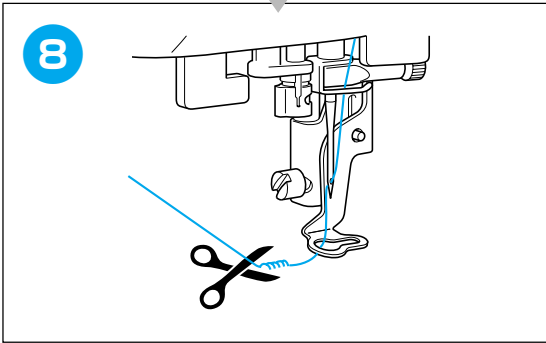
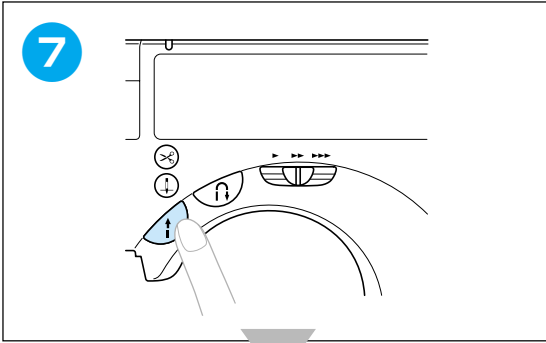
Wählen von Stickmustern

Kiezen van borduurpatronen

Selección de diseños de bordados

Selezione degli schemi di ricamo





Character Patterns
Motifs de caractères
Zeichenmuster
Karakterpatronen
Tipos de caracteres
Schemi con lettere

AB ■ Sans serif ■ Sans empattement ■ Serifenfrei
 ■ Schreefloos ■ Sans serif ■ Senza grazia

A B C D E F G H I J K L M N O P Q R S
 T U V W X Y Z
 a b c d e f g h i j k l m n o p q r s
 t u v w x y z
 0 1 2 3 4 5 6 7 8 9
 & ? ! - _ () ' . , /
 Ä Å Æ Æ Ñ Ö Ø Ç Ü
 ä à â â æ ë è é ê ñ ö ò ø ì ç ü ù ß

AB ■ Serif ■ Empattement ■ Serifen ■ Schreef ■ Serif ■ Grazia

A B C D E F G H I J K L M N O P Q R S
 T U V W X Y Z
 a b c d e f g h i j k l m n o p q r s
 t u v w x y z
 0 1 2 3 4 5 6 7 8 9
 & ? ! - _ () ' . , /
 Ä Å Æ Æ Ñ Ö Ø Ç Ü
 ä à â â æ ë è é ê ñ ö ò ø ì ç ü ù ß



- Outline style
- Opmaak contour
- Style contours
- Escritura con borde
- Umriss
- Stile contorno

A B C D E F G H I J K L M N O P Q R S
 T U V W X Y Z
 a b c d e f g h i j k l m n o p q r s
 t u v w x y z
 0 1 2 3 4 5 6 7 8 9
 & ? ! - _ () ' . , /
 Ä Å Æ Ñ Ö Ø Ç Ü
 ä å æ Æ ñ ö ø ç ü ß



- Bold
- Gras
- Fett
- Vet
- Negrita
- Grassetto

A B C D E F G H I J K L M N O P Q R S
T U V W X Y Z
a b c d e f g h i j k l m n o p q r s
t u v w x y z
0 1 2 3 4 5 6 7 8 9
& ? ! - _ () ' . , /
Ä Å Æ Ñ Ö Ø Ç Ü
ä å æ Æ ñ ö ø ç ü ß

AB

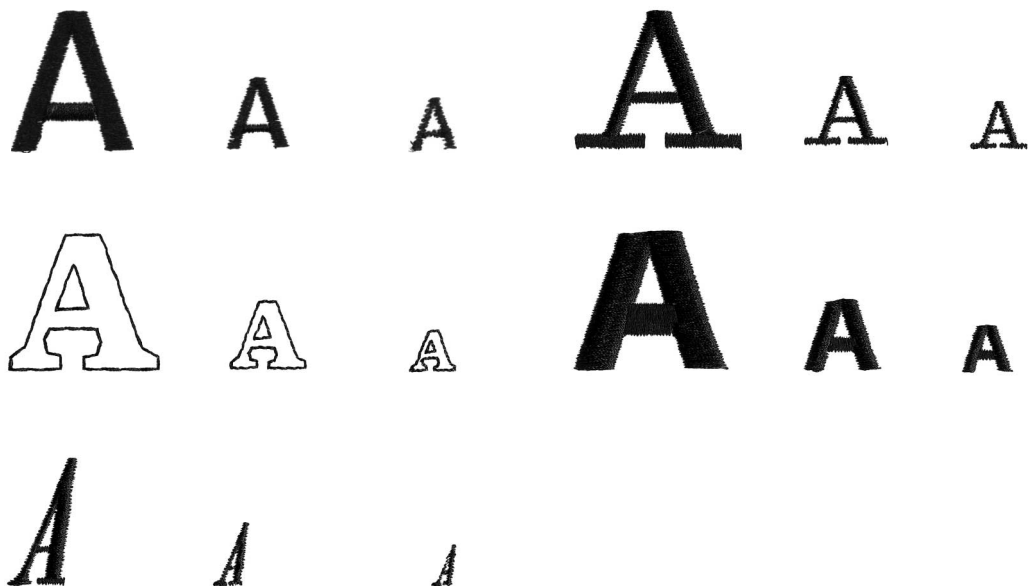
■ Italic ■ Italiques ■ Kursiv ■ Cursief ■ Cursiva ■ Corsivo

A B C D E F G H I J K L M N O P Q R S
 T U V W X Y Z
 a b c d e f g h i j k l m n o p q r s
 t u v w x y z
 0 1 2 3 4 5 6 7 8 9
 & ? ! - _ | ' . , /
 Ä Á Â Ã Ä Æ Ñ Ò Ó Ô Õ Ö Ç Ü
 ä à â â æ ë è é ê ñ ò ó ô õ ö ç ü ù Ò

■ Sample at actual size
■ Voorbeeld op ware grootte

■ Exemple en vraie grandeur
■ Muestra en tamaño real

■ Muster in Originalgröße
■ Campione in dimensioni reali



Frame patterns

Motifs cadres

Rahmenmuster

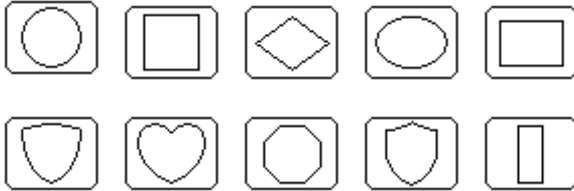
Kaderpatronen

Costuras de encuadre

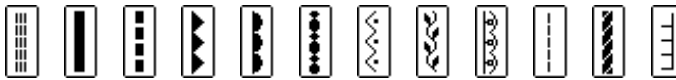
Motivi a cornicetta







- Frame shapes
- Raamvormen
- Formes de cadre
- Tipos de bastidores
- Rahmen-Formen
- Forme cornici











- Stitches
- Steken
- Points
- Puntadas
- Stiche
- Punti

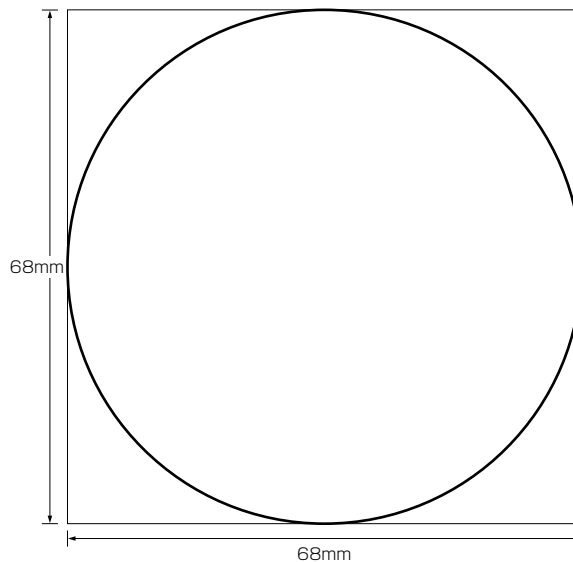


- Sample at actual size
- Voorbeeld op ware grootte
- Exemple en vraie grandeur
- Muestra en tamaño real
- Muster in Originalgröße
- Campione in dimensioni reali

Sample combining  and  / Exemple combinant  et  /

Muster mit Kombination von  und  / Voorbeeld waarin  en  zijn gecombineerd /

Muestra combinando  y  / Campione che combina  e 



Embroidery Pattern Color Change Table

Tableau de changement de couleur des motifs de broderie


Stickmuster-Farbtabelle

Kleurwijzigingstabel voor de borduurpatronen

Tabla de cambio de color para patrones de bordado

Tabella di cambiamento colori degli schemi di ricamo

No.1



2min

1	(800)
2	(507)
3	(323)

Size
 ↓2.2cm ↔1.9cm

No.6




4min

1	(205)
2	(800)
3	(405)
4	(507)
5	(323)

Size
 ↓2.5cm ↔2.7cm

No.10




17min

1	(800)
2	(800)
3	(800)
4	(019)
5	(800)
6	(513)
7	(124)
8	(085)
9	(086)

Size
 ↓6.2cm ↔6.2cm

No.2




5min

1	(205)
2	(058)
3	(323)

Size
 ↓3.0cm ↔3.0cm

No.7




5min

1	(800)
2	(205)
3	(001)
4	(507)
5	(900)

Size
 ↓2.4cm ↔5.7cm

No.11




6min

1	(513)
2	(507)
3	(339)
4	(205)

Size
 ↓4.9cm ↔5.7cm

No.3




4min

1	(017)
2	(513)
3	(205)
4	(030)
5	(208)
6	(323)

Size
 ↓2.4cm ↔2.6cm

No.8




2min

1	(205)
2	(405)
3	(507)
4	(800)
5	(900)

Size
 ↓2.4cm ↔5.8cm

No.12




9min

1	(208)
2	(800)
3	(507)
4	(209)
5	(614)

Size
 ↓5.6cm ↔5.8cm

No.4




5min

1	(017)
2	(001)
3	(005)
4	(323)

Size
 ↓2.6cm ↔3.0cm

No.9




7min

1	(019)
2	(019)
3	(019)
4	(205)
5	(507)
6	(007)
7	(900)

Size
 ↓5.6cm ↔5.7cm

No.13




22min

1	(507)
2	(800)
3	(339)
4	(058)
5	(900)
6	(001)
7	(205)
8	(085)
9	(019)
10	(900)

Size
 ↓8.1cm ↔6.9cm

No.5



5min

1	(010)
2	(339)
3	(800)
4	(323)

Size
 ↓2.9cm ↔3.0cm



No.14

42min

1	(405)
2	(017)
3	(323)
4	(339)
5	(208)
6	(800)
7	(507)
8	(001)
9	(800)
10	(019)
11	(085)
12	(058)
13	(010)
14	(900)

Size
 ⇅9.6cm ⇅9.6cm



No.15

20min

1	(707)
2	(800)
3	(307)
4	(001)
5	(205)
6	(900)

Size
 ⇅6.6cm ⇅5.4cm



No.16

7min

1	(205)
2	(507)
3	(800)
4	(900)

Size
 ⇅3.3cm ⇅3.2cm



No.17

21min

1	(513)
2	(323)
3	(810)
4	(612)
5	(010)
6	(323)

Size
 ⇅7.1cm ⇅9.5cm



No.18

20min

1	(810)
---	-------

Size
 ⇅9.4cm ⇅9.6cm



No.19

9min

1	(502)
2	(612)
3	(208)
4	(205)
5	(070)
6	(086)

Size
 ⇅7.7cm ⇅6.7cm



No.20

12min

1	(328)
---	-------

Size
 ⇅8.1cm ⇅5.6cm



No.21

3min

1	(030)
---	-------

Size
 ⇅3.5cm ⇅5.2cm



No.22


16min

1	(502)
2	(010)
3	(513)
4	(507)
5	(019)
6	(405)

Size
 ⇅6.8cm ⇅8.6cm

Embroidery Pattern Color Change Table
Tableau de changement de couleur des motifs de broderie
Stickmuster-Farbtabelle
Kleurwijzigingstabel voor de borduurpatronen
Tabla de cambio de color para patrones de bordado
Tabella di cambiamento colori degli schemi di ricamo

No.23



18min

1	(513)
2	(328)
3	(515)
4	(085)
5	(086)
6	(079)
7	(515)

Size
 ⚡ 9.9cm ↔ 5.7cm

No.28




1min

1	(810)
2	(812)

Size
 ⚡ 1.5cm ↔ 1.5cm

No.33




5min

1	(001)
2	(005)
3	(900)

Size
 ⚡ 3.4cm ↔ 2.8cm

No.24




7min

1	(607)
2	(812)
3	(804)
4	(010)
5	(509)

Size
 ⚡ 7.9cm ↔ 8.5cm

No.29




3min

1	(613)
---	-------

Size
 ⚡ 4.6cm ↔ 5.0cm

No.34




5min

1	(001)
2	(843)
3	(707)
4	(900)

Size
 ⚡ 4.0cm ↔ 2.7cm

No.25




9min

1	(214)
2	(513)
3	(812)
4	(607)
5	(079)
6	(010)

Size
 ⚡ 8.5cm ↔ 7.3cm

No.30




1min

1	(205)
2	(843)
3	(534)

Size
 ⚡ 1.8cm ↔ 1.5cm

No.35




4min

1	(001)
2	(405)

Size
 ⚡ 2.6cm ↔ 3.5cm

No.26




2min

1	(010)
2	(607)
3	(509)

Size
 ⚡ 3.0cm ↔ 9.5cm

No.31




2min

1	(507)
2	(843)
3	(209)
4	(058)

Size
 ⚡ 2.5cm ↔ 2.2cm

No.36




4min

1	(085)
2	(209)
3	(001)

Size
 ⚡ 3.0cm ↔ 5.1cm

No.27




1min

1	(607)
2	(812)

Size
 ⚡ 2.0cm ↔ 2.0cm

No.32




9min

1	(339)
2	(214)
3	(058)
4	(843)

Size
 ⚡ 5.9cm ↔ 2.5cm

No.37



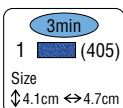
4min

1	(704)
2	(086)
3	(513)
4	(070)

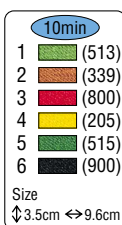
Size
 ⚡ 3.9cm ↔ 5.7cm



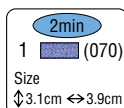
No.38



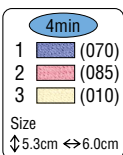
No.41



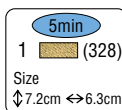
No.45



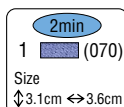
No.39



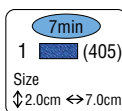
No.42



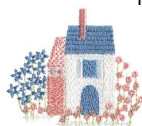
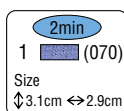
No.46



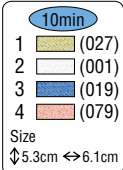
No.43



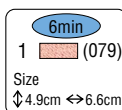
No.47



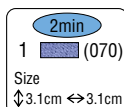
No.40



No.44



No.48



• Patterns 38 and 44 through 70 are designed to be embroidered on lace. Since the thread color information is not indicated in the screen on machine's operation panel, any color of thread can be used to match the lace.

• Les motifs 38 et 44 à 70 sont conçus pour la broderie sur dentelle. Les informations de couleur de fil n'étant pas indiquées sur l'écran du panneau de commande de la machine, vous pouvez utiliser n'importe quelle couleur en fonction du lacet.

• Muster 38 und 44 bis 70 sind zum Sticken auf Spitzengewebe ausgelegt. Da die Garnfarbeninformation nicht im Bildschirm im Bedienfeld des Geräts angegeben kst, kann jede Garnfarbe, die zum Spitzengewebe passt, verwendet werden.

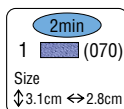
• De patronen 38 en 44 t/m 70 zijn bedoeld om op zijde te worden geborduurd. Aangezien er geen draadkleurinformatie wordt aangegeven in het scherm van het bedieningspaneel op de machine, kan elke gewenste draadkleur worden gebruikt die bij het kant past.

• Los diseños 38 y 44 al 70 han sido diseñados para ser bordados en encajes. Como el color del hilo no está indicado en la pantalla del panel de operaciones de la máquina, podrá utilizarse hilo de cualquier color para casarlo con el encaje.

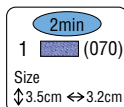
• Gli schemi 38 e da 44 a 70 sono destinati al ricamo su pizzo. Poiché le informazioni di colore filo non sono indicate sullo schermo del pannello operativo della macchina, si può usare qualsiasi colore di filo in modo che corrisponda a quello del pizzo.



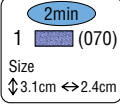
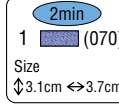



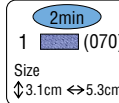

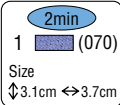
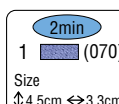
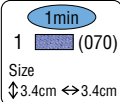
No.49



No.50



Embroidery Pattern Color Change Table
Tableau de changement de couleur des motifs de broderie
Stickmuster-Farbtabelle
Kleurwijzigingstabel voor de borduurpatronen
Tabla de cambio de color para patrones de bordado
Tabella di cambiamento colori degli schemi di ricamo

 No.51	 1 (070) Size ⇅ 3.1cm ⇅ 2.4cm	 No.58	 1 (070) Size ⇅ 3.1cm ⇅ 4.3cm	 No.65	 1 (070) Size ⇅ 3.1cm ⇅ 3.7cm
 No.52	 1 (070) Size ⇅ 3.2cm ⇅ 4.2cm	 No.59	 1 (070) Size ⇅ 3.1cm ⇅ 2.6cm	 No.66	 1 (070) Size ⇅ 3.1cm ⇅ 3.5cm
 No.53	 1 (070) Size ⇅ 3.1cm ⇅ 2.7cm	 No.60	 1 (070) Size ⇅ 3.1cm ⇅ 3.2cm	 No.67	 1 (070) Size ⇅ 3.1cm ⇅ 5.3cm
 No.54	 1 (070) Size ⇅ 4.5cm ⇅ 3.1cm	 No.61	 1 (070) Size ⇅ 3.1cm ⇅ 2.6cm	 No.68	 1 (070) Size ⇅ 3.1cm ⇅ 3.8cm
 No.55	 1 (070) Size ⇅ 3.1cm ⇅ 4.0cm	 No.62	 1 (070) Size ⇅ 3.1cm ⇅ 3.7cm	 No.69	 1 (070) Size ⇅ 3.1cm ⇅ 2.9cm
 No.56	 1 (070) Size ⇅ 3.1cm ⇅ 3.1cm	 No.63	 1 (070) Size ⇅ 3.1cm ⇅ 2.9cm	 No.70	 1 (070) Size ⇅ 4.5cm ⇅ 3.3cm
 No.57	 1 (070) Size ⇅ 3.1cm ⇅ 4.6cm	 No.64	 1 (070) Size ⇅ 3.4cm ⇅ 3.4cm		

Color Thread Conversion Chart Stickgarn-Farbtabelle Tabla de conversión de hilos de color

Tableau de conversion des fils de couleur Omzettingstabel voor kleurgaren Tabella di conversione dei fili colorati

	Embroidery	Country
1	(900)	(100)
2	(001)	(000)
3	(800)	(149)
4	(085)	(155)
5	(086)	(024)
6	(124)	(152)
7	(107)	(126)
8	(030)	(148)
9	(807)	(158)
10	(869)	(636)
11	(620)	(625)
12	(079)	(122)
13	(333)	(212)
14	(202)	(342)
15	(205)	(043)
16	(206)	(334)
17	(208)	(335)
18	(126)	(322)
19	(209)	(336)
20	(010)	(331)
21	(812)	(370)
22	(348)	(242)
23	(214)	(354)
24	(328)	(404)
25	(307)	(025)
26	(058)	(717)
27	(337)	(264)
28	(339)	(224)
29	(843)	(012)
30	(399)	(706)
31	(330)	(414)
32	(323)	(255)
33	(542)	(505)

	Embroidery	Country
34	(502)	(461)
35	(509)	(463)
36	(519)	(476)
37	(517)	(473)
38	(534)	(483)
39	(507)	(485)
40	(808)	(467)
41	(027)	(442)
42	(513)	(444)
43	(515)	(446)
44	(405)	(586)
45	(406)	(575)
46	(017)	(150)
47	(019)	(512)
48	(420)	(564)
49	(415)	(057)
50	(007)	(588)
51	(070)	(015)
52	(810)	(133)
53	(612)	(623)
54	(613)	(624)
55	(614)	(635)
56	(804)	(604)
57	(607)	(003)
58	(704)	(745)
59	(707)	(747)
60	(005)	(020)
61	(817)	(734)
62	-----✂	
63	-----	
64		
65	NOT DEFINED / NON DEFINI / NICHT DEFINIERT / NIET GEDEFINIEERD / SIN DEFINIR / NON DEFINITO /	

NOTE:

- The conversion chart is based on "Embroidery" threads, so the result of your work with "Country" threads might be different from the pictures. We recommend you to sew a test piece first.
- Actual colors may vary slightly from the chart.

REMARQUE:

- Le tableau de conversion est basé sur un fil de "broderie", de sorte que le résultat d'un travail effectué avec des fils "Pays" risque d'être différent des images. Il est recommandé de faire d'abord un essai de couture.
- Les couleurs réelles risquent d'être légèrement différentes de celles du tableau.

HINWEIS:

- Die Umwandlungstabelle basiert auf "Stickerei"-Fäden, so daß mit "Country"-Fäden ausgeführte Näharbeiten eventuell nicht dem angezeigten Bild entsprechen. Es empfiehlt sich deshalb, vorher ein kurzes Probestück zu nähen.
- Die tatsächlichen Farben entsprechen mitunter nicht genau der Tabelle.

OPMERKING:

- De omzettingstabel is gebaseerd op "Embroidery" borduurgaren, zodat bij het werken met "Country" garen een ander resultaat kan worden verkregen. Wij bevelen u aan eerst een stukje op een proeflapje te naaien.
- De feitelijke kleuren kunnen een weinig verschillen van de kleuren in de tabel.

NOTA:

- El gráfico de conversión se basa en hilos de bordado "Embroidery", por lo que el resultado de su labor con hilos "Country" podrán ser diferentes a los de las ilustraciones. Le recomendamos que primero haga un cosido de prueba.
- Los colores reales podrán variar ligeramente respecto a los del gráfico.

NOTA:

- La tabella di conversione è basata sui fili "Embroidery", per cui il risultato del lavoro con i fili "Country" può essere diverso dalle immagini. Consigliamo di cucire prima una pezza di prova.
- I colori effettivi possono variare leggermente dalla tabella.

Free Manuals Download Website

<http://myh66.com>

<http://usermanuals.us>

<http://www.somanuals.com>

<http://www.4manuals.cc>

<http://www.manual-lib.com>

<http://www.404manual.com>

<http://www.luxmanual.com>

<http://aubethermostatmanual.com>

Golf course search by state

<http://golfingnear.com>

Email search by domain

<http://emailbydomain.com>

Auto manuals search

<http://auto.somanuals.com>

TV manuals search

<http://tv.somanuals.com>