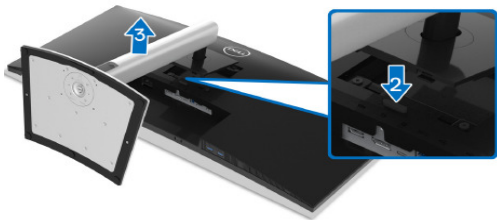


1. Disassembly Procedures

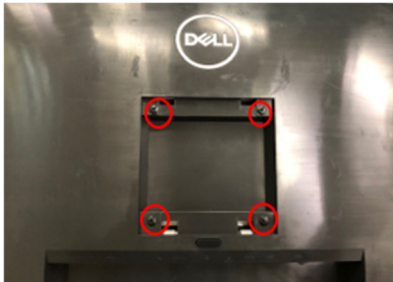
S1 Turn off power

S2 Removing the stand

1. Place the monitor on U3415W curve sponge jig
2. Press and hold the stand release button.
3. Lift the stand up and away from the monitor.



S3 Unlock 4 screws on rear cover



(Screw Torque: 11±1Kgf)

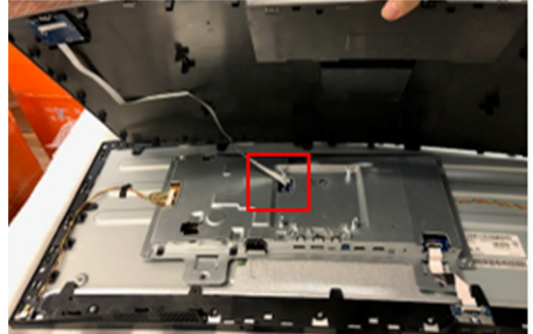
S4 Use hands and bar scraper to disassemble RC from monitor

Notice the disassembly order:

Top Side=>Right/ Left Side=>Bottom Side

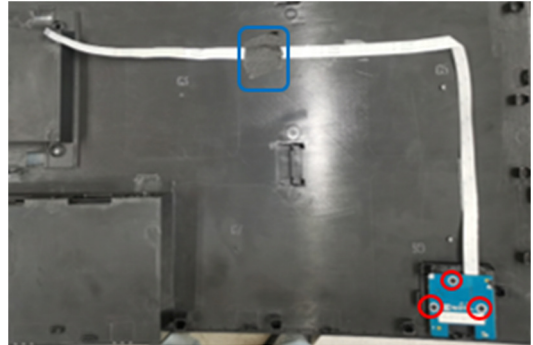


S5 Pull out CTRL BD FFC from I/F BD to take off Rear Cover



S6 Tear off a tape from CTRL BD FFC

Unlock screw*3 to disassemble CTRL BD from Rear Cover



(Screw Torque: 1.5-2.0Kgf)

S7 Pull out USB FFC cable from I/F BD

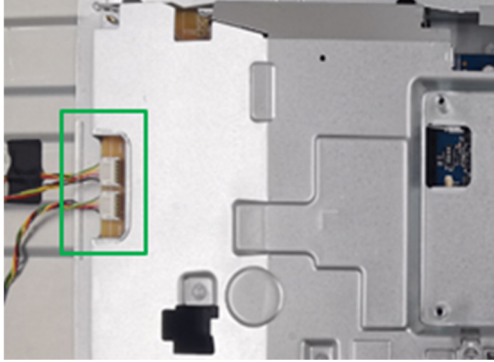
Unlock a screw to disassemble USB BD from Middle Frame

Pull out USB FFC cable from USB BD

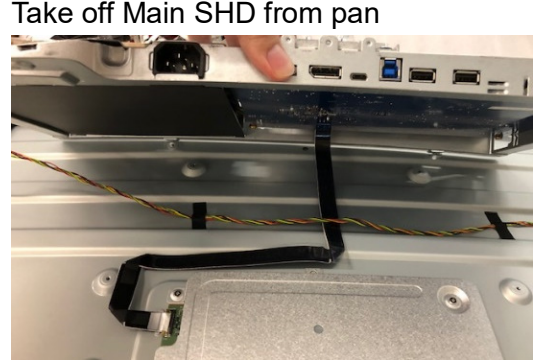


(Screw Torque: 4.5±0.5Kgf)

S8 Pull out short backlight wire and long backlight wire from LED DRV BD



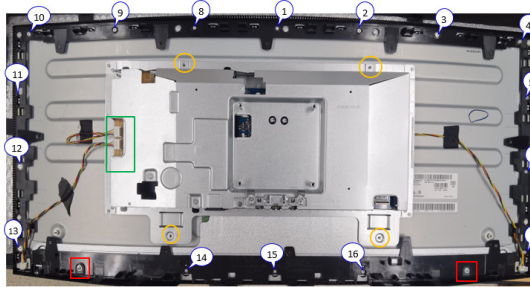
S11 Pull out EDP cable from Panel



S9 Unlock 4 screws to disassemble Main SHD (Orange mark)

Unlock 2 screws to disassemble 2 Panel Boss from Middle Frame (Red Mark)

Unlock 16 screws to disassemble Middle Frame (Blue mark)

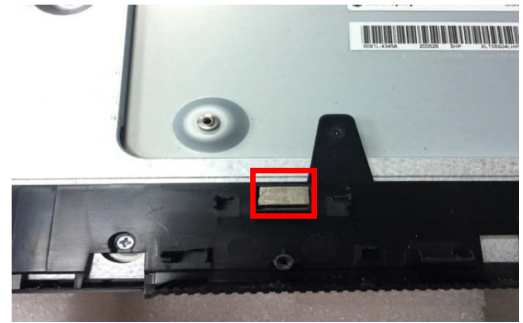


(Screw Torque:
Main SHD: 4.5±0.5kgf
Panel Boss: 3.5-4.0kgf
Middle Frame: 4.0-4.5kgf)

S10 Tear off a tape from EDP cable



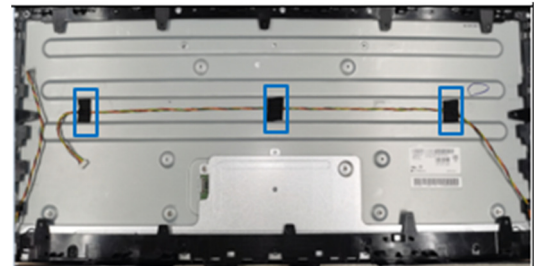
S12 Take off Conductive foam from Middle Frame



S13 Tear off all tapes from Panel.

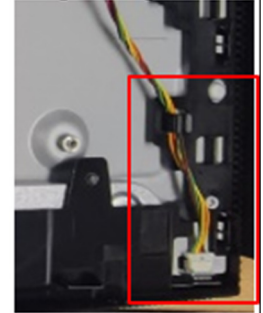
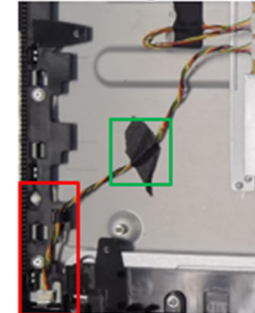
Pull out short backlight wire and long backlight wire from panel

Disassemble the Middle Frame from Panel.

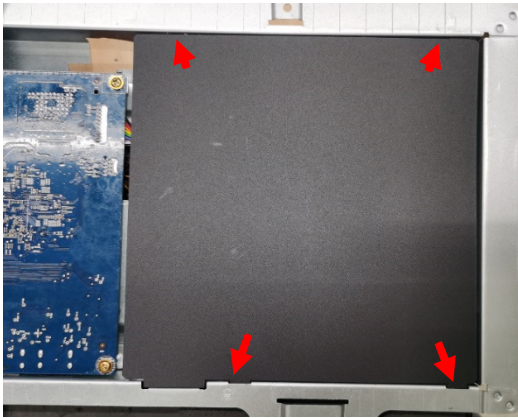


Short backlight wire

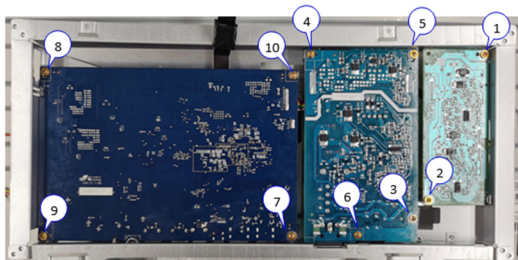
Long backlight wire



- S14** Disassemble "Mylar PWR BD" from Main SHD

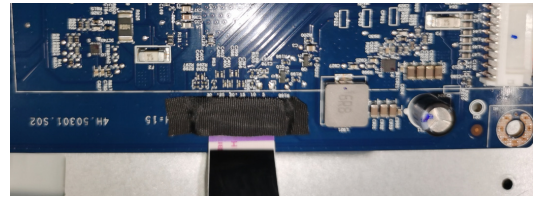


- S15** Unlock 10 PCBA screws to disassemble I/F BD, SPS BD and LED DRV BD from Main SHD

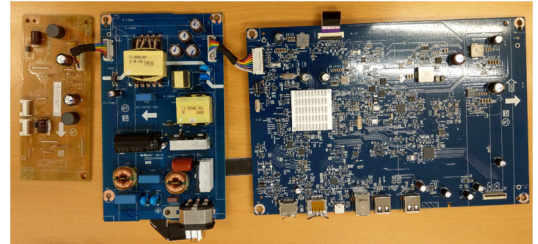


(Screw Torque: 9±1Kgf)

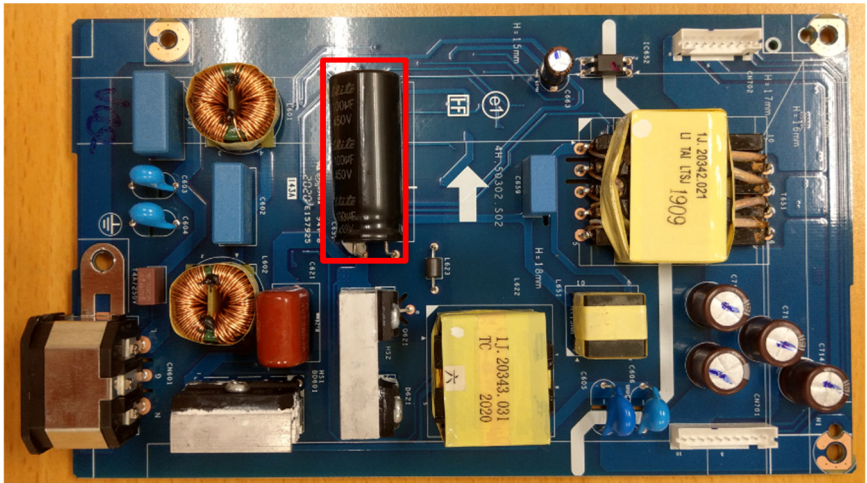
- S16** Tear off tape from I/F BD



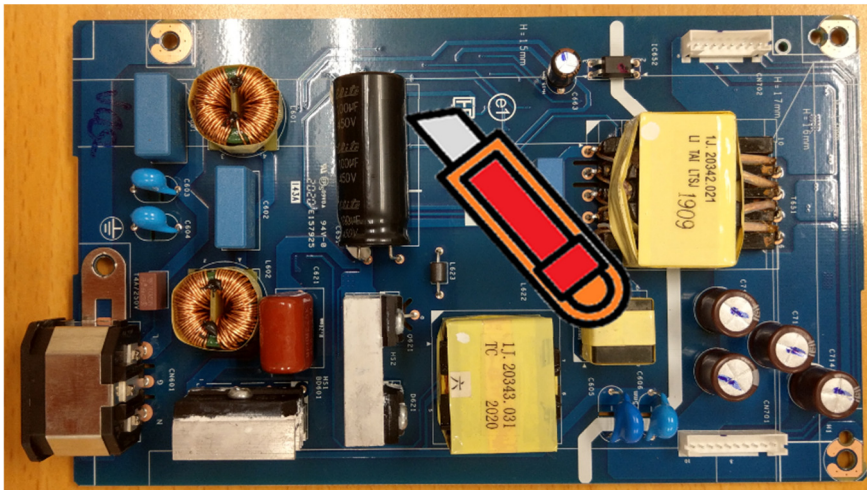
- S17** Remove all cables from I/F BD, SPS BD and LED DRV BD



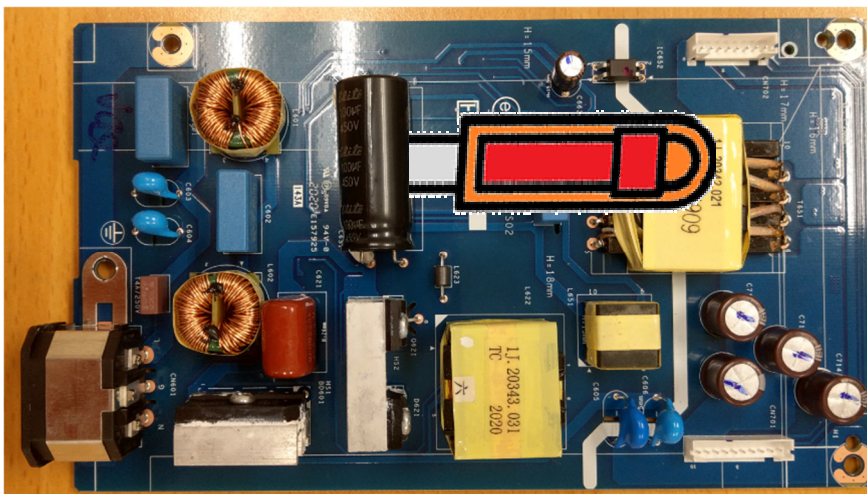
S18 Remove electrolyte capacitors (red mark) from printed circuit boards



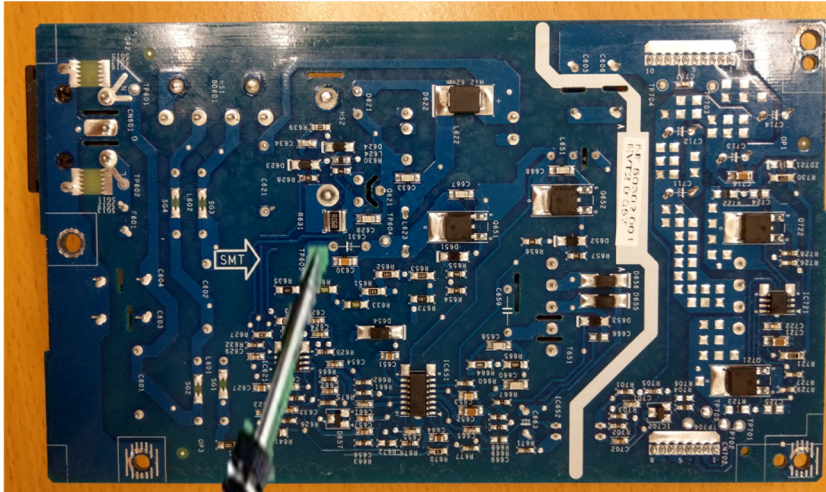
S18-1 Cut the glue between bulk cap. and PCB with a knife



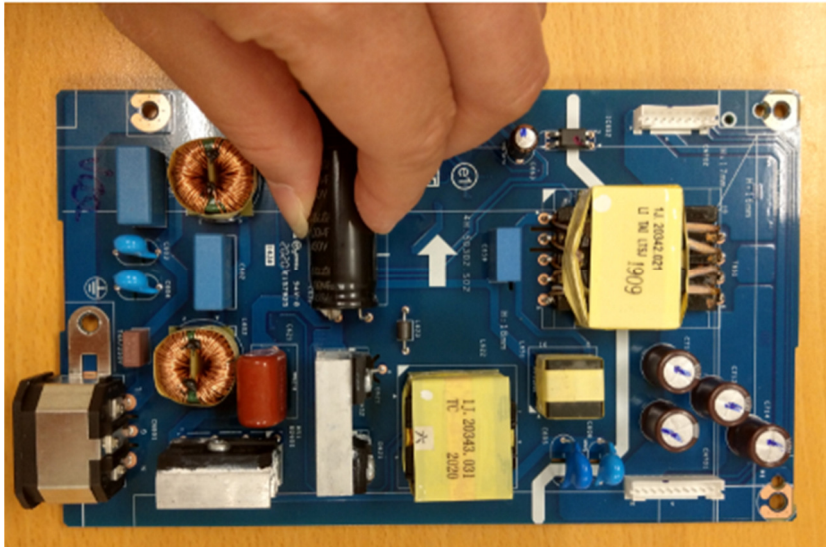
S18-2 Ensure cutting path within the glue, don't touch bulk cap. or PCB



S18-3 Take out bulk cap. pin solder with soldering iron and absorber



S18-4 Lift the bulk cap. up and away from the PCB



2. Product material information

The following substances, preparations, or components should be disposed of or recovered separately from other WEEE in compliance with Article 4 of EU Council Directive 75/442/EEC.

Capacitors / condensers (containing PCB/PCT)	No used
Mercury containing components	No used
Batteries	No used
Printed circuit boards (with a surface greater than 10 square cm)	Product has printed circuit boards (with a surface greater than 10 square cm)
Component contain toner, ink and liquids	No used
Plastic containing BFR	No used
Component and waste contain asbestos	No used
CRT	No used
Component contain CFC, HCFC, HFC and HC	No used
Gas discharge lamps	No used
LCD display > 100 cm ²	Product has an LCD greater than 100 cm ²
External electric cable	Product has external cables
Component contain refractory ceramic fibers	No used
Component contain radio-active substances	No used
Electrolyte capacitors (height > 25mm, diameter > 25mm)	Product has electrolyte capacitors (height >25mm, diameter > 25mm)

3. Tools Required

List the type and size of the tools that would typically can be used to disassemble the product to a point where components and materials requiring selective treatment can be removed.

Tool Description:

- Screwdriver
- Penknife
- Bar scraper

Free Manuals Download Website

<http://myh66.com>

<http://usermanuals.us>

<http://www.somanuals.com>

<http://www.4manuals.cc>

<http://www.manual-lib.com>

<http://www.404manual.com>

<http://www.luxmanual.com>

<http://aubethermostatmanual.com>

Golf course search by state

<http://golfingnear.com>

Email search by domain

<http://emailbydomain.com>

Auto manuals search

<http://auto.somanuals.com>

TV manuals search

<http://tv.somanuals.com>