



# Installation Guide

Wireless Audio / Video Kit

GUWAVKIT



## Table of Contents

System Requirements	4	Video Mode Configuration	45
Important Information	5	Screen Resolution Configuration	48
Package Contents	6	Wireless USB Transmitter Settings	51
Device Overview	8	Wireless USB Transmitter Selection	53
Wireless USB Transmitter	8	Wireless USB Transmitter Reset	54
Wireless VGA Receiver	9	Wireless VGA Receiver in Wired Mode	55
Wireless Audio Receiver	11	Trouble Shooting Guide	56
Preparing for Setup	12	Technical Specifications	70
Software Installation	17	Appendix	72
Install Wireless USB Transmitter	25	Limited Warranty	76
Install Wireless VGA Receiver	27	Federal Communications Commission (FCC) Statement	77
Install Wireless Audio Receiver	35	Contact	78
Advanced Settings	43		
Wireless USB Manager	43		

## System Requirements

- Microsoft Windows® XP (SP2) or Vista (32- / 64-bit) with available USB 2.0 port
- 1.6 GHz processor (CPU) with 1GB of system memory (RAM)
- Flat-panel (LCD / Plasma / DLP) TV display or Projector with VGA (RGB / D-sub 15-pin / PC) or DVI port (Does NOT work with CRT tube TV)
- TV or audio system with 3.5mm audio jack or RCA connectors

Suggested system requirement to play online video clips in a “window” – 1.6 Ghz Atom™ with 1GB RAM, 480p video in a “window” – 1.8 Ghz Pentium™ M with 1GB RAM, 720p video in a “window” – 2.8 GHz Pentium™ M with 1 GB RAM, 720p video in “full screen” – 2.8 GHz Core™ 2 Duo with 1GB RAM.

## Important Information

Before you get started, please NOTE:

Do not place Wireless USB devices under direct sunlight or near high heat emitting devices;

Do not place Wireless USB devices near water or wet surfaces to avoid electric hazards;

Do not place Wireless USB devices on any moving or unstable surfaces.

## Package Contents

- 1 x Wireless VGA receiver (for display)



- 1 x Wireless Audio receiver (for stereo)



- 1 x Wireless USB Transmitter (for computer)



- 1 x VGA (F) to DVI-A adapter



- 1 x USB 2.0 A to mini-B cable (3 ft.)



- 1 x USB 2.0 extension cable (4 ft.)



- 1 x Gold Plated VGA cable (6 ft.)



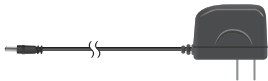
- 1 x 3.5mm to 3.5mm cable



- 1 x 3.5mm to RCA cable



- 1 x Power adapter for Audio Receiver



- 1 x Power adapter for Video Receiver



- 1 x Hook-and-loop fastener



- 1 x Quick Start Guide / User manual



- 1 x Installation CD



- 1 x Warranty / Registration Card



## Device Overview

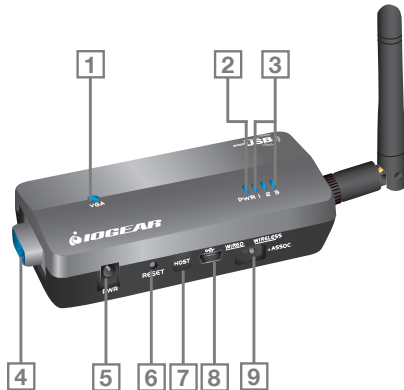
### Wireless USB Transmitter

1. LINK: Data Transfer Activity Indicator
  - LED blinks when data is being transferred
2. PWR: Power
  - LED is solid when powered by the PC
3. USB Connector
  - Connect to any available USB 2.0 port on your computer





## Wireless VGA Receiver



#### 1. VGA : VGA Activity Indicator

- LED is solid when display cable is connected
- LED is blinking when data is being transferred

#### 2. PWR: Power Indicator

- LED is solid when power is applied

#### 3. Status Indicator

- Single\* solid light: device is wirelessly connected to the selected Wireless USB Transmitter
- Single\* slowly blinking light: device is searching for a Wireless USB Transmitter
- Single\* quickly blinking light: device is trying to connect to a Wireless USB Transmitter
- Rapidly scrolling lights: device is used in wired mode.
- Three Simultaneous Blinking Lights: Cable Association Mode

\*Only one light at a time. The position of the light indicates which Wireless USB Transmitter the device is trying to communicate with.

#### 4. VGA Connector

- Connects to one end of the included VGA cable, and the other end to the VGA or DVI port on your display

#### 5. Power Plug

- Power adapter socket

#### 6. RESET Button

- Association history can be erased by pressing and holding this button for 10 seconds. (Please visit P.54 for details)

#### 7. HOST Button

- This button is used to select a different Wireless USB Transmitter. (Please visit P.53 for details)

#### 8. Mini-B USB port

- In wireless mode, this port is used for cable association. (Please visit Appendix for details)
- In wired mode, connect the VGA adapter with the USB cable via this port for wired operation. (Please visit P.55 for details)

#### 9. WIRELESS/WIRED switch

- Choose from wired or wireless mode by using this switch - P.55

## Wireless Audio Receiver

### 1. Power/Activity LED

- LED is solid when connection is established
- LED is blinking when power is on and connection is not established

### 2. 3.5mm Audio Socket

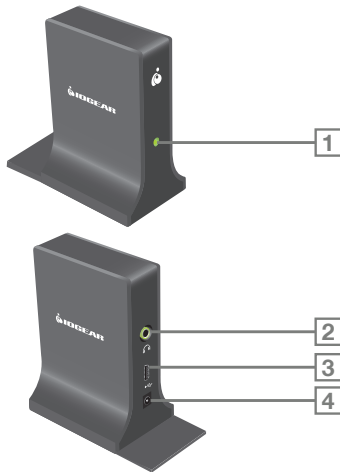
- Connects to the 3.5mm audio connector of the included 3.5mm or RCA audio cable, and the other end to the available 3.5mm audio socket or RCA audio socket on your display or stereo system

### 3. Mini-B USB Port

- Connects to the mini-B end of the included USB cable, and the Type-A end to an available USB port on your computer to create association between your computer and the audio receiver

### 4. Power plug

- Power adapter socket

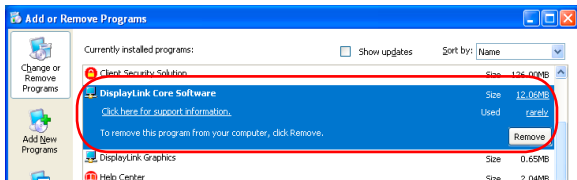


## Preparing for Setup

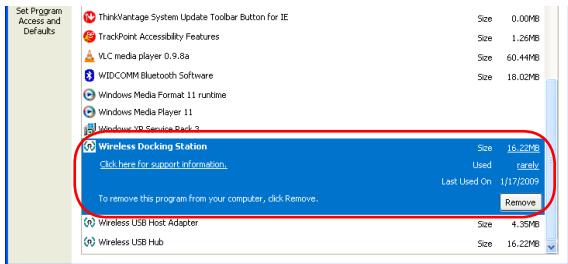
Before you begin, please make sure to properly remove all previously installed Wireless USB Manager and DisplayLink drivers from your system to avoid driver conflict. To properly remove previously installed drivers, please follow below instructions.

### For Windows XP users

1. Go to Start -> Control Panel -> Add or Remove Programs
2. Select any previously installed DisplayLink software and click on **Remove** button to properly uninstall the program.
3. After all DisplayLink software are uninstalled, please restart your system.

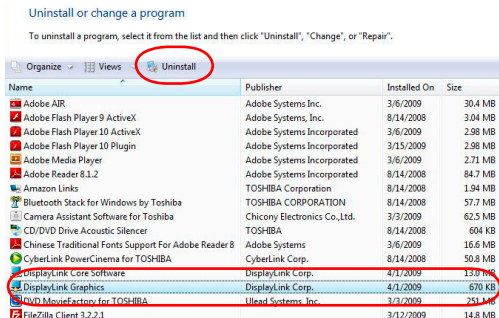


4. Repeat steps 1 and select any previously installed Wireless USB drivers and click on **Remove** button to properly uninstall the program.



## For Windows Vista users

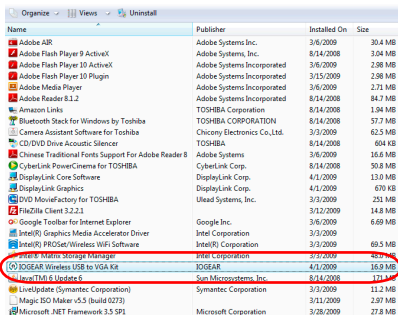
1. Click on the Vista logo. Click on Control Panel then double click on Programs and Features.
2. Select any previously installed Displaylink software and click on **Uninstall** button to properly uninstall the program.



3. After successfully remove the DisplayLink software, please restart your system.
4. Repeat Step 1 and select IOGEAR Wireless USB to VGA Kit and click on **Uninstall**.

#### Uninstall or change a program

To uninstall a program, select it from the list and then click "Uninstall", "Change", or "Repair".



Name	Publisher	Installed On	Size
Adobe AIR	Adobe Systems Inc.	3/6/2009	30.4 MB
Adobe Flash Player 9 ActiveX	Adobe Systems, Inc.	8/14/2008	3.04 MB
Adobe Flash Player 10 ActiveX	Adobe Systems Incorporated	3/6/2009	2.98 MB
Adobe Flash Player 10 Plugin	Adobe Systems Incorporated	3/15/2009	2.98 MB
Adobe Media Player	Adobe Systems Incorporated	3/6/2009	2.71 MB
Adobe Reader 8.1.2	Adobe Systems Incorporated	8/14/2008	84.7 MB
Amazon Links	TOSHIBA CORPORATION	8/14/2008	1.94 MB
Bluetooth Stack for Windows by Toshiba	TOSHIBA CORPORATION	8/14/2008	57.7 MB
Camera Assistant Software for Toshiba	Chicony Electronics Co.,Ltd.	3/3/2009	62.5 MB
CD/DVD Drive Acoustic Silencer	TOSHIBA	8/14/2008	604 KB
Chinese Traditional Fonts Support For Adobe Reader 8	Adobe Systems	3/6/2009	16.6 MB
CyberLink PowerCinema for TOSHIBA	CyberLink Corp.	8/14/2008	50.8 MB
DisplayLink Core Software	DisplayLink Corp.	4/1/2009	13.0 MB
DisplayLink Graphics	DisplayLink Corp.	4/1/2009	670 KB
DVD MovieFactory for TOSHIBA	Ulead Systems, Inc.	3/3/2009	251 MB
FileZilla Client 3.2.2.1		3/12/2009	14.8 MB
Google Toolbar for Internet Explorer	Google Inc.	3/6/2009	6.69 MB
Intel(R) Graphics Media Accelerator Driver	Intel Corporation	3/3/2009	
Intel(R) PROSet/Wireless WiFi Software	Intel(R) Corporation	3/3/2009	69.5 MB
Intel(R) Matrix Storage Manager	Intel Corporation	3/3/2009	48.9 MB
IOGEAR Wireless USB to VGA Kit	IOGEAR	4/1/2009	16.9 MB
Java(TM) 6 Update 6	Sun Microsystems, Inc.	8/14/2008	171.4 MB
LiveUpdate (Symantec Corporation)	Symantec Corporation	3/3/2009	11.2 MB
Magic ISO Maker v5.5 (build 0273)		3/11/2009	2.97 MB
Microsoft .NET Framework 3.5 SP1	Microsoft Corporation	3/28/2009	27.8 MB

**After all previously installed DisplayLink and Wireless USB to VGA Kit software are properly removed, please make sure to install the software on the CD following the procedures on the next page before plugging in the Wireless USB Transmitter to your computer.**

**Important Note:**

If installing on Windows XP, Service Pack 2 (SP2) is required. Please verify that this has been installed before installing the Wireless Audio/Video Kit software. Before installing the software, please make sure the Wireless USB Transmitter and Wireless VGA and Audio Receivers are not connected to the computer and not powered.





## Software Installation – Windows XP

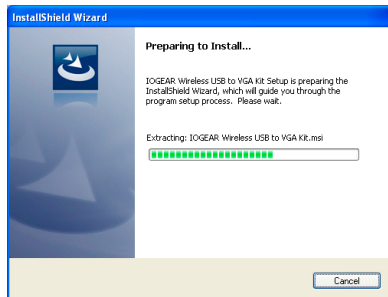
### Important Note:

For Windows XP users, if you do not have Microsoft .NET Framework 2.0 installed, you will be prompted to have it installed. Please follow below instructions for installation.

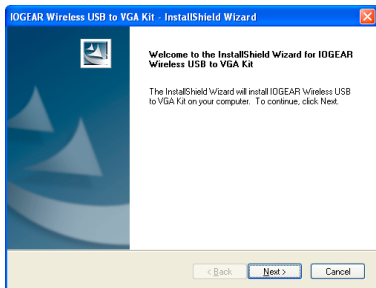
1. Click **“Yes”** to install .NET 2.0 Framework
2. Check **“License Agreement”** and click **“Install”**
3. Click **“Finish”** to complete the installation
4. Restart your computer when prompted
5. Eject your CD and follow instructions below to begin the installation

### For Windows XP users

1. Insert the installation CD into the CD-ROM on your computer and the InstallShield Wizard will load automatically.

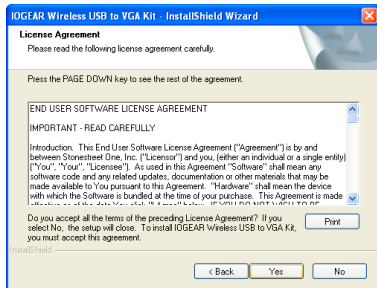


2. Click on “Next” to continue.

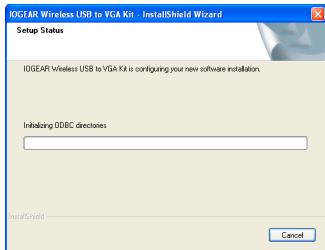


**Note** – If you previously installed IOGEAR Wireless USB Hub and Adapter Kit (GUWH104KIT) software, please follow detail instructions on P.72 Appendix.

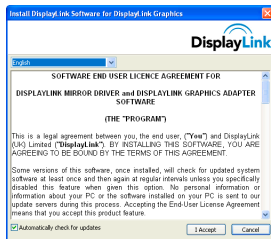
3. Click on “Yes” to accept the software License Agreement and continue the installation.



4. The InstallShield Wizard will continue loading the drivers. Do not click on any button, otherwise, it will interrupt the installation process and cause malfunction of the product.

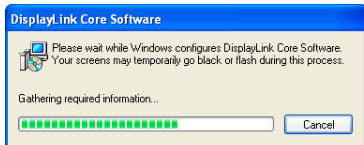


5. The installation wizard will continue to install the video driver provided by DisplayLink. Click on **“I Accept”** to continue the installation.

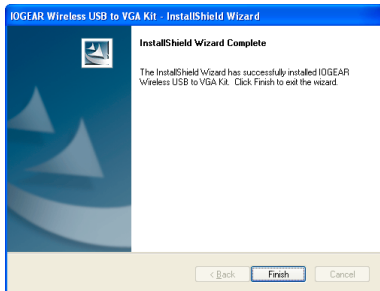


**Note** – If this screen does not appear, please make sure you correctly remove all DisplayLink software from your system. After un-installation, please repeat the new software installation procedures from P.17.

6. The DisplayLink driver starts to load. Do not click on any button, otherwise, it will interrupt the installation process and cause malfunction of the product.



7. Click on "**Finish**" to complete the software installation.

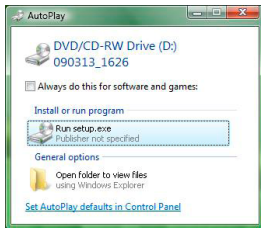


**It is highly recommended to restart your system after the software installation to ensure all drivers are loaded correctly.**

## Software Installation – Windows Vista

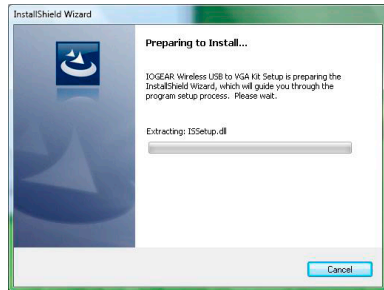
### For Windows Vista users

1. Insert the installation CD into the CD-ROM on your computer and click on **Run setup.exe** to begin the installation.

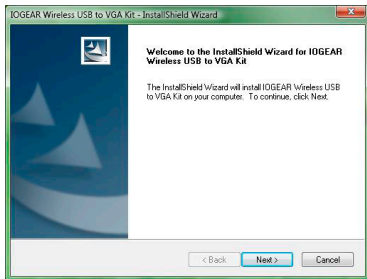


2. Click on Allow when prompted User Account Control window to continue.

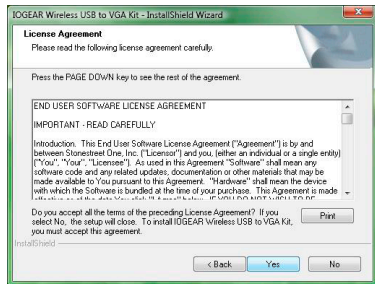
3. The InstallShield Wizard will start loading.



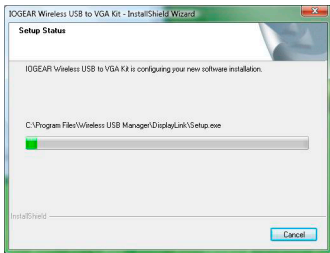
4. Click on "Next" to continue.



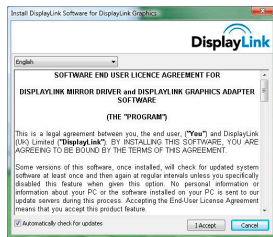
5. Click on "Yes" to accept the software License Agreement and continue the installation.



6. The InstallShield Wizard will continue loading the drivers. Do not click on any button, otherwise, it will interrupt the installation process and cause malfunction of the product.

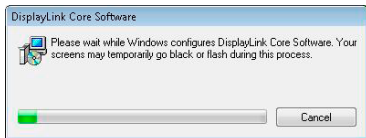


7. The installation wizard will continue to install the video driver provided by DisplayLink. Click on **"I Accept"** to continue the installation.

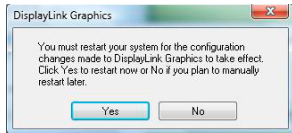


**Note** – If this screen does not appear, please make sure you correctly remove all DisplayLink software from your system. After un-installation, please repeat the new software installation procedures from P.21.

8. The DisplayLink driver starts to load. Do not click on any button, otherwise, it will interrupt the installation process and cause malfunction of the product.



9. Click "**Yes**" to restart your system.





## Install Wireless USB Transmitter

1. Make sure the antenna is securely connected to the Wireless USB Transmitter.
2. Plug the Wireless USB Transmitter to your computer via option 1 or 2. Windows will detect the device and complete the driver installation process automatically.

### Option 1:

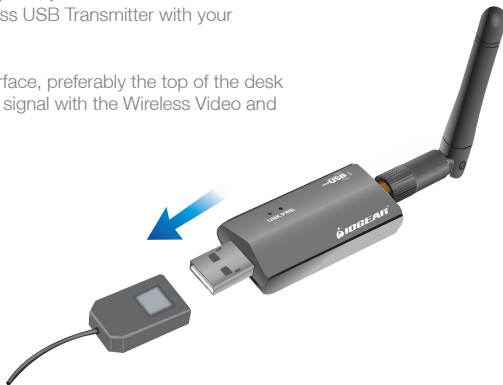
Plug the Wireless USB Transmitter into any available USB 2.0 port on your computer.



### Option 2:

To properly connect the Wireless USB Transmitter and avoid interfering with other USB devices connected to your computer, you can use the included USB extension cable to connect the Wireless USB Transmitter with your computer.

Place the USB extension cable on a flat surface, preferably the top of the desk or work area to ensure a good line-of-sight signal with the Wireless Video and Audio Receivers.



## Install Wireless VGA Receiver

1. Make sure the antenna is connected to the Wireless Video Receiver

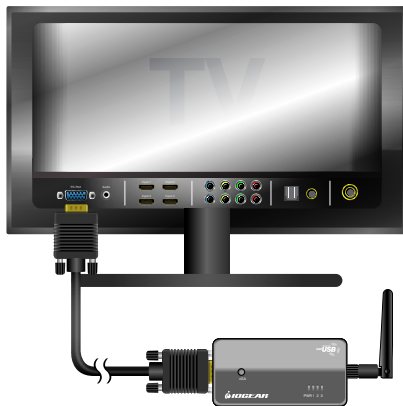


2. Connect one end of the included VGA cable to the Wireless Video Receiver, and the other end to your display's VGA port.



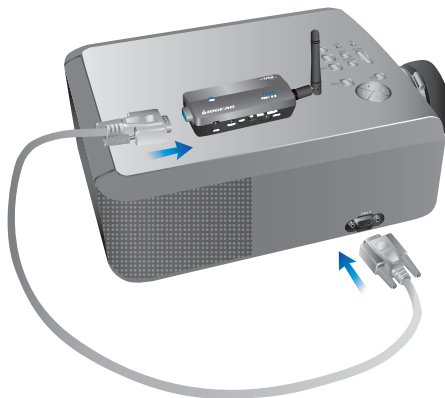
### Example 1:

For LCD monitor / Flat-Panel TV



## Example 2:

For Projector

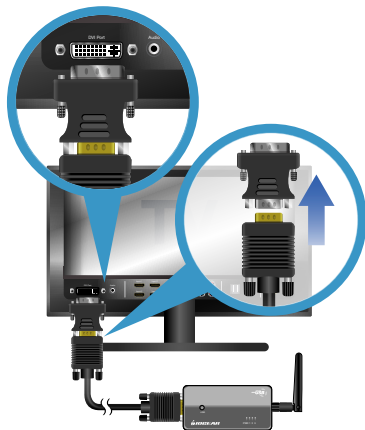


## Install Wireless Video Receiver – With DVI Connector

For monitor or TV that comes with DVI connector, you may use the included VGA to DVI-A adapter to connect the Wireless Video Receiver to your display. Connect one end of the VGA cable to the VGA connector of the VGA to DVI-A adapter, then connect the DVI end of the adapter to the DVI port on your display.

**Important Note:** The included DVI-A adapter only works with displays with DVI-A or DVI-I connector built-in, **it does not work with DVI-D connector on the display.** Please consult the user manual of your display for further support information on using DVI port.

DVI-I



3. Plug the power cable into Wireless VGA Receiver and make sure the Power Indicator LED is solid. Windows will automatically install the drivers for the Wireless VGA Receiver.

Note: Please use the included power adapter as shown. This power adapter is slightly different from the one for Audio Receiver on P.35

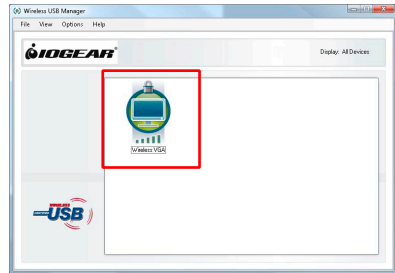


4. Upon successful installation of your Wireless Video Receiver, double click on the Wireless USB Manager software icon located in your system tray.



If you do not see the Wireless USB Manager icon appears in your system tray, please click on Start, then select All Programs, then click on Wireless USB Manager and click again on Wireless USB Manager to launch the application.

5. You should see the active Wireless VGA icon showing up in the software interface.





6. Please change your display's source setting to select VGA / RGB / PC as your video input source. Refer to the operating instructions supplied with your display.

Note: You may use the included fabric hook-and-loop fastener to attach the Wireless VGA Receiver to your projector or LCD display / TV in order to ensure a good line-of-sight signal with the Wireless USB Transmitter.



7. Upon successful connection, the installation will set the best resolution supported by your display and extend your desktop to the right. This is called the **Extended Mode**. You will see the wallpaper displaying on the monitor/display that is connected to the Wireless VGA Receiver.

You can click on the Restore Down button on the top right corner of the application window, then drag the window to the right side of your screen. You will then see the window showing up on the monitor/display that is connected to the Wireless VGA Receiver.



Note: For advanced display setting, please visit Video Mode Configuration section on page 45.

## Installing Wireless Audio Receiver

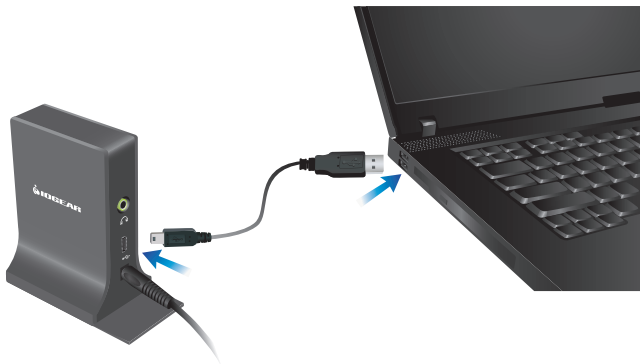
1. Plug the power cable into the Wireless Audio Receiver. Make sure the Link Activity LED turns on and starts blinking. The next step is to create the association of the Wireless Audio Receiver and the Wireless USB Transmitter.

**Note: The Wireless Audio Receiver will NOT function until the following association process is completed.**

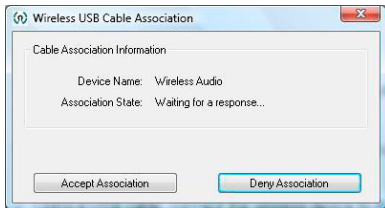
Note: Please use the included power adapter as shown. This power adapter is slightly different from the one for Video Receiver on P.31



2. Connect the mini-B end of the USB cable to the mini-B port on the Wireless Audio Receiver, and connect the other end of the USB cable to your computer.



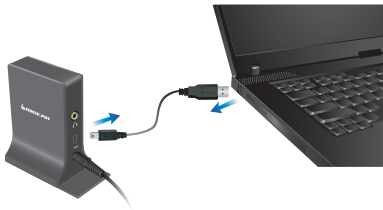
3. Once connected, the Wireless USB Cable Association window will prompt and please click on **“Accept Association”** to continue.



4. Click on **OK** to complete the association process.



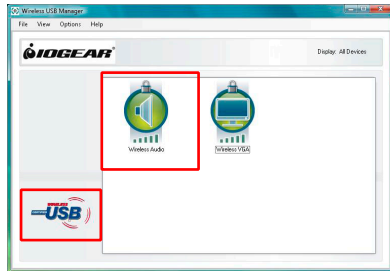
5. Disconnect the USB cable from the Wireless Audio Receiver and your computer.



Double click on the Wireless USB manager icon located in the Windows system tray to verify the connection has been established successfully.



The Wireless USB Manager will display the Wireless Audio icon and show the signal strength when connected. If the Wireless Audio Receiver is not connected then the Wireless Audio icon will be grayed out. If you do not see the Wireless Audio icon displayed after following above steps, please refer to Trouble Shooting Guide on P.57.



## Connecting the Audio Receiver to Speakers

There are 3 options to connect the Wireless Audio Receiver to your TV, home stereo system, or power speakers.

### Option 1:

Connect one end of the 3.5mm audio cable to the Wireless Audio Receiver, and the other 3.5mm end to the 3.5mm port on your display or stereo system.



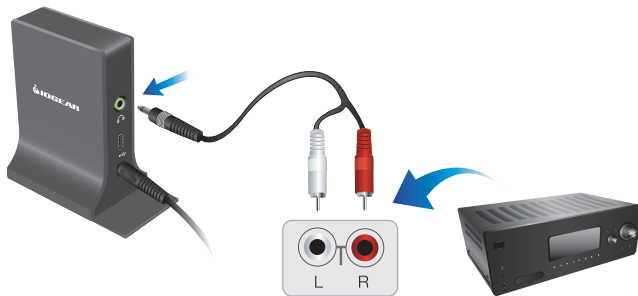
When connecting the 3.5mm audio cable to the 3.5mm port on your TV or display, make sure you connect to the 3.5mm port next to the VGA port used to connect your Wireless Video Receiver. Please refer to the original user manual that came with your TV or display for further instructions.





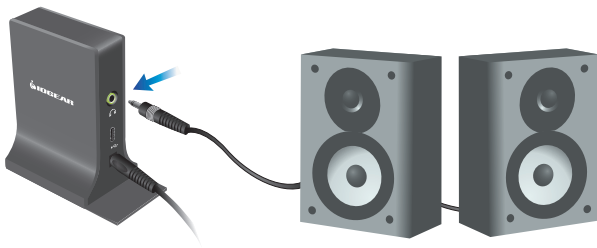
### Option 2:

Connect the 3.5mm end of the 3.5mm to RCA cable to the Wireless Audio Receiver, and the RCA (Red & White) end to your stereo system or TV's RCA input sockets.



### Option 3:

Connect your powered speakers' 3.5mm audio cable directly to the Wireless Audio Receiver.



**Congratulations, your Wireless Audio / Video Kit is ready for use.**

Note:

For quick trouble-shooting guide, please go to P.56.

For more information on using your Wireless Audio / Video Kit for different applications, please visit IOGEAR's website for detail instructions.

## Advanced Settings – Wireless USB Manager

The Wireless USB Manager is a simple and easy-to-use interface that allows you to manage your Wireless USB devices and control your Wireless USB Transmitter settings. The Wireless USB Manager can be accessed via the Wireless USB Manager icon located in the Windows system tray.

To Launch the Wireless USB Manager, double click on the Wireless USB Manager icon in your system tray. On the main pane, you will find an icon representing your Wireless VGA and Wireless Audio Receivers. If your Wireless VGA or Audio Receiver is not connected, the icon will be grayed out.



If your Wireless VGA Receiver is connected and working, then the icon will change and show the current signal strength.

The **View** menu will give the option of what type of devices you wish to display (All Devices, Connected Devices and Disconnected Devices).

The **Options** menu will give the option to launch Host Settings window and turn the Wireless USB Transmitter radio on or off.

The **Help** menu offers quick help on how to connect devices to your Wireless USB Transmitter.



## Advanced Settings – Video Mode Configuration

**Note:** If no output is seen on the monitor connected to the Wireless VGA Receiver, it may be in a mode which cannot be displayed by the monitor. This can happen if the monitor is not adjusted to the mode supported by the Wireless VGA Receiver. Please refer to the operating instructions supplied with your display and try adjusting the resolution of the primary display until an image is shown.

By default, the installation will set the best resolution supported for your computer and extend your screen to the right.

There are two options to adjust the resolution, color quality, screen rotation, and between extended or mirror mode.

1. On the Monitor icon in the system tray to access the menu.
2. Go through Control Panel, double click on “Display”, then choose “Settings” tab.

In this user manual, we will show you how to access the advanced setting feature by double clicking on the Monitor icon in the system tray.



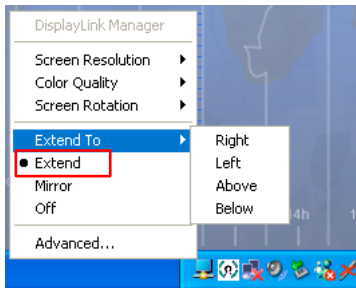
## Extended Mode

Extended mode enables the extension of the desktop across multiple monitors.

To set up extended mode, click on the monitor icon located in your system tray to access the DisplayLink menu.



You can choose to extend your desktop to 4 different orientations: right, left, above, and below, of your desktop.



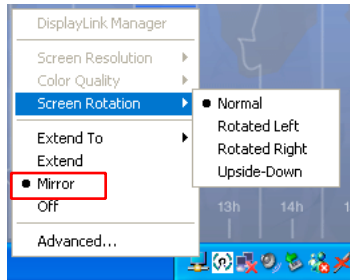
## Mirror Mode

Mirror mode duplicates the primary display (your desktop) to the monitor connected to the Wireless VGA Receiver.

After setting up the display settings, you may now click on the monitor icon located in your system tray to access the DisplayLink menu.



You can choose **Mirror** from the menu to enable the mirror mode. You should see duplicated desktop showing up on the monitor that is connected to the Wireless VGA Receiver.



## Advanced Settings - Screen Resolution Configuration

You may change the video resolution under extended or mirror mode.

### Extended Mode

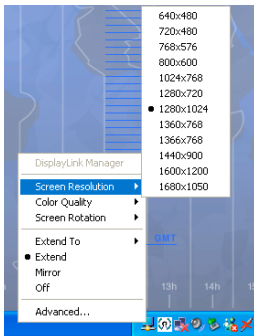
To change the screen resolution when in Extended Mode, please follow below instructions.

Click on the monitor icon located in your system tray to access the DisplayLink menu.



Choose the available resolution setting from the list.

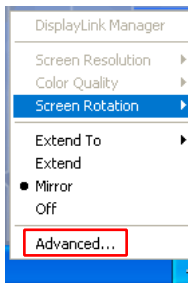
In the extended mode, the available resolution depends on the resolution supported by the display that is connected to the Wireless VGA Receiver.





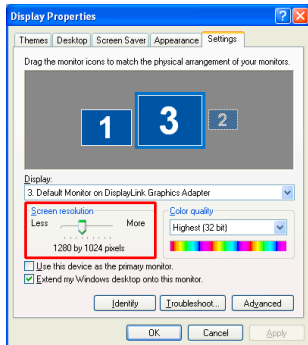
## Mirror Mode

When using in the Mirror Mode, click on "**Advanced**" from the menu to bring up the Display Settings window.



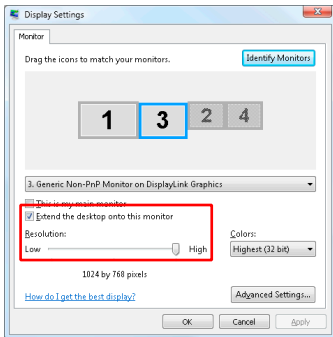
## Windows XP

For Windows XP users, you can then click and drag the arrow bar to switch between different resolutions and click on **Apply** then **OK** to confirm.



## Windows Vista

For Windows Vista users, you can click and drag the arrow bar to switch between different resolutions, and click on **Apply** then **OK** to confirm.



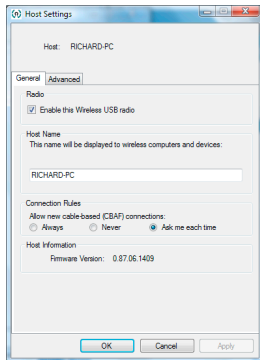
## Advanced Settings - Wireless USB Transmitter Settings

To manage the Wireless USB Transmitter settings, double click on the Wireless USB Manager icon in the system tray to bring up the Wireless USB Manager window. Click on **Options** and select **Host Settings**.



- **General Settings**

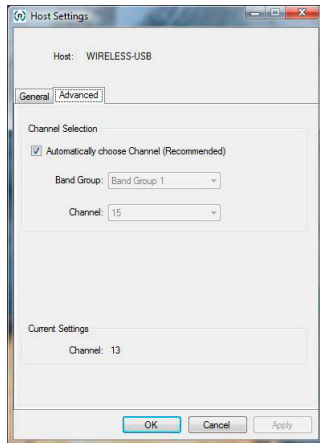
1. Enable this Wireless USB radio: to turn on or off the Wireless USB radio.
2. Host Name: you can change the name of your Wireless USB Transmitter.
3. Connection Rules: this is connection rule when creating cable association with the Wireless USB Transmitter and any Wireless Receiver. It is set to Ask me each time to ensure connection security. You can change to other setting that is suitable to you.
4. Host Information: this shows the firmware version of your Wireless USB Transmitter.



- **Advanced** Settings

Channel selection: this function allows you to manually set a radio channel (not recommended) for the wireless communication (combination of Band Group and Channel).

For optimal performance, the automatic setting is recommended.



## Advanced Settings - Wireless USB Transmitter Selection

If you purchase more than one Wireless USB Transmitter (GUWA200), then you can use the HOST button on the Wireless Video Receiver to select and connect to different Wireless USB Transmitter. However, before you pressing this button to select another Wireless USB Transmitter, please make sure to go through the cable association process to associate the Wireless USB Transmitter and Wireless Video Receiver. For more information on the cable association process, please refer to the Appendix on P.73.

If multiple Wireless USB Transmitters have been associated with the Wireless Video Receiver, you may have to press the HOST button multiple times before a connection is made with the desired Wireless USB Transmitter. There are up to 16 Wireless USB Transmitters can be associated with your Wireless Video Receiver.



## Advanced Settings - Wireless USB Transmitter Reset

To erase all Wireless USB Transmitters (except the Wireless USB Transmitter included in this kit) associated\* to your Wireless VGA Receiver, hold down the "RESET" button on the Wireless VGA Receiver for 10 seconds. This will cause the Wireless VGA Receiver to erase all Wireless USB Transmitters that have been associated from its list. Each Wireless USB Transmitter will then have to be re-associated with the Wireless VGA Receiver using the cable association process in order to connect to the Wireless VGA Receiver again.

\*For more information about the association, please refer to P.73 Appendix - Cable association with other devices.



## Advanced Settings - Wireless VGA Receiver in Wired Mode

Your Wireless VGA Receiver can also be used in wired mode. Make sure the position of the WIRED / WIRELESS switch is in the WIRED position. Plug the USB cable between your computer and the Wireless VGA Receiver. The function is the same as the wireless mode but data will be transferred through the cable and does not require the use of the Wireless USB Transmitter.



## Trouble Shooting Guide

Installation and setup related Q&A .....	P.57
Connection and signal quality related Q&A .....	P.64
Video and Audio Receivers configuration related Q&A .....	P.68



## Trouble Shooting Guide

For the latest FAQs, please go to IOGEAR website ([www.iogear.com](http://www.iogear.com)).

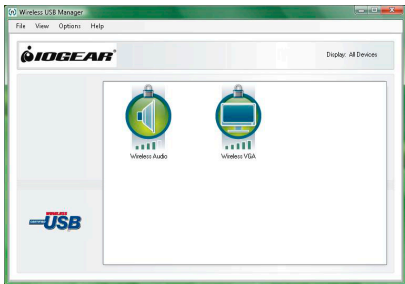
### 1. Why can't I install .NET?

You may have an older version of .NET, preventing the newer one from being installed. Using Add/Remove Programs (For Windows XP users) or Programs and Features (For Windows Vista users) in the Control Panel, uninstall any version of Microsoft .NET Framework older than version 2.0. Then install Microsoft .NET Framework from the Wireless Audio / Video Kit CD.

### 2. My Wireless USB Transmitter is plugged into my computer and my Wireless Video is powered on but I do not see anything on my display. What's wrong?

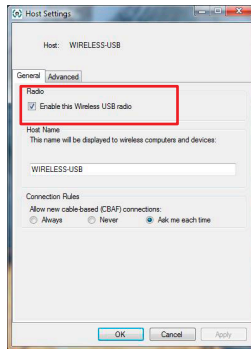
Check the Wireless USB Manager to see if there is an icon for your Wireless Video Receiver. If there is no icon, try unplugging and plugging in your Wireless USB Transmitter back to your computer to reload the driver.

If you see an icon that is grayed out in the Wireless USB Manager, try resetting the Wireless VGA Receiver by unplugging its power cord and plugging it back in. You should see the icon in the Wireless USB Manager appearing in color when it is connected.



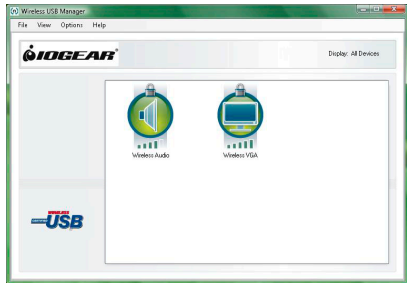
Still not connected?

Double check that the radio for your Wireless USB Transmitter is on in the Wireless USB Manager.



3. My Wireless USB Transmitter is plugged into my computer and my Wireless Audio Receiver is powered on but I do not hear anything. What's wrong?

Check the Wireless USB Manager to see if there is an icon for your Wireless Audio Receiver. If there is no icon, try unplugging and plugging your Wireless USB Transmitter to your computer, then unplugging and plugging your power adapter to your Wireless Audio Receiver to reset the connection.



4. My Wireless USB Transmitter is plugged into one of the USB ports on my computer and my Wireless Audio and Video Receivers are powered on, but I get this window and I do not hear or see anything. What do I do?

Please try to unplug and re-plug the Wireless USB Transmitter into the USB port, and you should see the USB logo becomes colored. Once the USB logo becomes colored, then you should see the Wireless Audio and Wireless VGA icons shows in color and your Wireless Audio & Video Kit should become functional again.

Besides unplugging and re-plugging in the Wireless USB Transmitter, you can also try to power cycle the Audio and VGA Receivers as this will help to reset the wireless connection.



5. I already reset my Wireless USB Host Transmitter and Audio Receiver, and the icon does show up in the Wireless USB Manager. But there is still no sound, what's wrong?

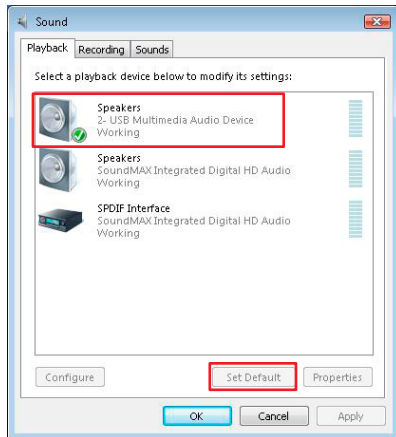
### Windows XP

For XP users, please go to **Start -> Control Panel -> Sounds and Audio Devices**, then select **Audio** tab and make sure the **USB Multimedia Audio Device** is selected then click OK.



## Windows Vista

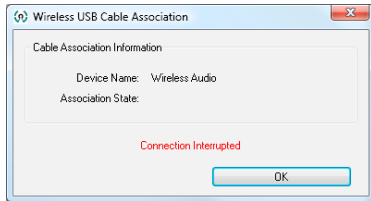
For Vista users, right click on the Speaker icon at the bottom right corner of your system tray, then make sure the **“2- USB Multimedia Audio Device”** is checked then click **Set Default** and **OK**.



6. Why do I get this window during the association process?

If you idle for more than 45 seconds during the cable association process, you will see this window prompt. Just click **OK** to close the window, and repeat the association process again and you should not see this window again.

Please note, **DO NOT** idle more than 45 seconds during the cable association process.



- 
7. I successfully installed everything and I can see video and hear audio from my TV, but the signal is bad and I can not get smooth video and audio quality. What can I do to get a better signal?

First of all, please make sure the distance between the Wireless USB Transmitter and Wireless Video and Audio Receivers is within 30 feet. Wireless USB technology is a in-room solution and it does not work beyond 30 feet of range.

Second, please make sure the antenna of your Wireless USB Transmitter keeps a clearance of minimum 3" off the desktop surface and have a good line-of-sight with the Wireless Video and Audio Receivers. Due to different home and office setup and unknown interference, we recommend using the included USB extension cable to connect with the Wireless USB Transmitter and find a suitable position for good signal.

You can also try to unplug and plug the Wireless USB Transmitter back into your computer to reset the connection. You should see the icon in the Wireless USB Manager becomes grayed out then color again. Now try to restart the application that you were using and check if the signal quality improves.

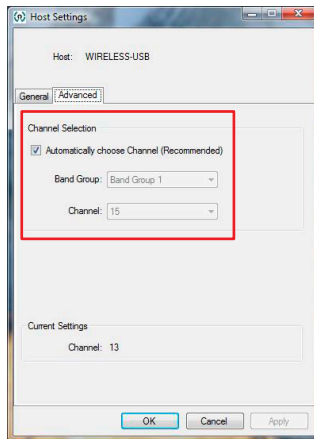



- 
8. The video and audio signals seem to drop out when I walk in front of the Wireless USB Transmitter or put my hands around the antenna. What should I do to get a better signal?

It is the most important thing to ensure a good line-of-sight between the Wireless USB Transmitter and the Wireless Receivers. Therefore, we recommend not putting your hands or any obstacles between the Wireless USB Transmitter and the Wireless Receivers to ensure good signal.

9. If you are experiencing video or audio quality problems, please try following procedures for solutions.

- Adjust the screen resolution to the appropriate setting supported by your monitor/display, please refer to P.48 for detail instructions.
- The Wireless Audio / Video Kit requires certain level of system resource for smooth operation. Try to close other applications on your computer to free up the system resource.
- Does your computer meet the minimum system requirements? Please refer to P.4 for more information.
- The Wireless Audio / Video Kit requires radio signals to be in the line of sight. Please ensure to eliminate as much interferences as possible between the Wireless Transmitter and the Wireless Video and Audio Receivers.
- Change the channel as shown on the right or move in your computer closer to the display.



- 
10. I accidentally unplug the power from my Wireless Video Receiver, and the movie becomes playing on my main display of my computer. How do I bring it back to the other (extended) monitor?

Please stop the movie that is currently playing and close the player on the computer. Plug in the power adapter back to the Wireless Video Receiver. Restart your movie and you should be able to drag the movie to the extended monitor.

11. I accidentally unplug the power from my Wireless Audio Receiver, and the sound is gone. How do I make it work again?

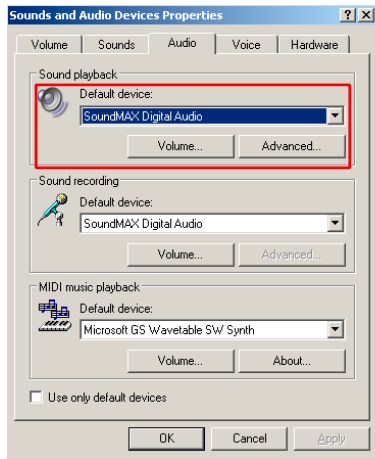
Please stop the movie or music that is currently playing and close the player on the computer. Plug in the power adapter back to the Wireless Audio Receiver. Restart your movie or music and you should be able to hear the sound again. If this is not working, please refer to page 61 and make sure the correct audio device is selected on your computer.

12. I already setup my Wireless USB Transmitter and Audio Receiver, and the icon does show up in the Wireless USB Manager. However, I would like the sound to be streaming from the built-in speakers of my computer, how do I do that?

First of all, close the multimedia application you are currently running, and you have to change the playback device settings to activate the built-in speakers on your computer.

For Windows XP users, please go to **Start -> Control Panel -> Sounds and Audio Devices**, then select Audio tab and make sure to select your default audio device and click **Apply** then **OK**.

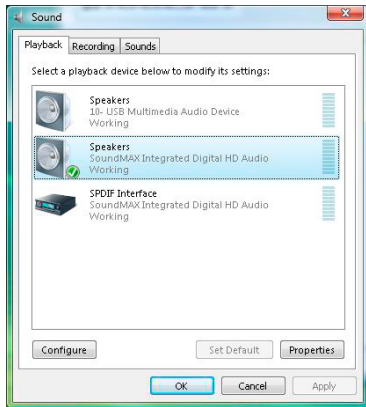
**Do not** select USB Multimedia Audio Device as this is the driver for Wireless Audio Receiver.



For Vista users, right click on the Speaker icon at the bottom right corner of your system tray, then right click on your default speaker device and select **Set as default device** on the device and click **OK**.

**DO NOT** select 2- USB Multimedia Audio Device as this is the driver for the Wireless Audio Receiver.

Now you may restart the multimedia application you were using for your music, and the music should be coming off from the built-in speakers on your computer.



## Technical Specifications

Function	GUWAVKIT
<b>Audio</b>	
Audio Output	2 CH DAC output
Dynamic Range	95db, THD+N -85db ~ -91db
Sample Rate	8KHz, 16KHz, 44.1KHz, to 48KHz with 16-bit resolution
<b>Antenna Type</b>	Omni directional
<b>Video Resolution</b>	Up to UXGA 1600x1200 or WSXGA+ 1680x1050
<b>Video Streaming</b>	Up to 720p
<b>Color Depth</b>	32-bit true color
<b>Interface</b>	Audio: 3.5mm TRS audio connector ; Video: VGA female connector
<b>Frequency Band</b>	3.1GHz ~ 4.8GHz (WiMedia Band Group 1)
<b>Number of Channel</b>	7 Channels (3 FFI + 4 TFI)

Function	GUWAVKIT
Operating Range	Up to 30 feet (10 meters)
Operating System Support	Microsoft XP 32-bit; Vista 32/64-bit
PHY Data Rate	53.3Mbps, 80Mbps, 106.6Mbps, 160Mbps, 200Mbps, 320Mbps, 400Mbps, 480Mbps
RF Modulation Type	QPSK/DCM
Security	Highly secured wireless connection (AES 128-bit)
USB Specification	Certified Wireless USB 1.0; Certified USB 2.0
Power Supply	Audio Adapter: 5V, 1Ah, 100-240VAC; Video Adapter: 5V, 2Ah; 100-240VAC
<b>Environment</b>	
Humidity	10-95% RH, Non-condensing
Operation Temperature	0°C to 50°C
Storage Temperature	0°C to 75°C

## Appendix

### I. Compatibility with IOGEAR Wireless USB Hub and Adapter Kit (GUWH104KIT)

Important: To retain the functionality of both the Wireless Audio / Video Kit and the GUWH104KIT, you MUST follow these steps:

1. Uninstall the GUWH104KIT software by using Add/Remove Programs or Programs and Features on the Control Panel. Please select and remove “Ultrasuite with WiCenter Basic”. The Wireless Audio / Video Kit installer will not allow you to proceed until this software is removed.
2. Complete the installation of the Wireless Audio / Video Kit as shown in the Wireless VGA Software Installation section.
3. Install the GUWH104 software “Driver Hub Only” for your Wireless USB Hub from IOGEAR website. Please make sure that you are in the correct product page.  
<http://www.iogear.com/support/dm/driver/GUWH104#display>
4. Use the Wireless USB Host Adapter (GUWA200) that comes with this kit to communicate with your Wireless USB Hub.

**Note: After this upgrade, the Wireless USB Host Adapter (GUWA100U) will not function with the Wireless VGA Receiver (GUW2015V) or the Wireless USB Hub (GUWH104) on the PC system where the GUW2015VKIT software has been installed. However you may use this Wireless USB Host Adapter (GUWA100U) on a different PC. For more support information, please contact IOGEAR.**



## **II. Cable association with other devices**

### Association Concept:

In order to establish a secure wireless connection between both the Wireless USB Transmitter and the Wireless USB devices, you will need to go through the cable association process. The association process will allow the Wireless USB Transmitter and the Wireless USB device to exchange security information about each other necessary to operate in a secured wireless mode.

### Association Process:

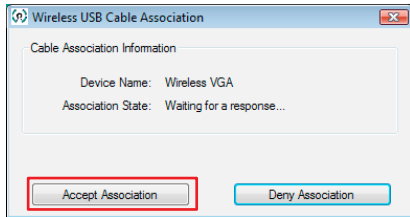
If you purchase additional Wireless USB devices, you will have to associate them with your Wireless USB Transmitter. Refer to your Wireless USB device documentation for more information on its settings for cable association.

Cable association steps:

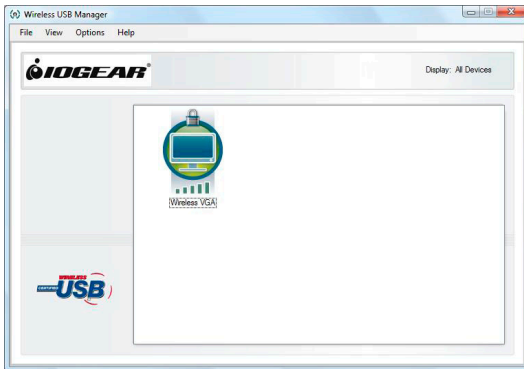
1. Make sure that the Wireless USB Manager is running. Check your Windows tray for the Wireless USB Manager icon.



2. Power on your Wireless USB device.
3. Connect the USB cable between an available USB port on your computer and your Wireless USB device.
4. Complete cable association by pressing the "Accept Association" button when prompted.
5. Remove the USB cable from your Wireless USB device and computer then follow instructions specific to your Wireless USB device for wireless operation.



Associated Wireless USB devices will appear as icons in the Wireless USB Manager. When the Wireless USB device is connected to your computer, the icon will appear in color.



## Limited Warranty

IN NO EVENT SHALL THE DIRECT VENDOR'S LIABILITY FOR DIRECT, INDIRECT, SPECIAL, INCIDENTAL OR CONSEQUENTIAL DAMAGES RESULTING FROM THE USE OF THE PRODUCT, DISK, OR ITS DOCUMENTATION EXCEED THE PRICE PAID FOR THE PRODUCT.

The direct vendor makes no warranty or representation, expressed, implied, or statutory with respect to the contents or use of this documentation, and especially disclaims its quality, performance, merchantability, or fitness for any particular purpose.

The direct vendor also reserves the right to revise or update the device or documentation without obligation to notify any individual or entity of such revisions, or updates. For further inquiries please contact IOGEAR.

## Federal Communications Commission (FCC) Statement

This device complies with part 15 of the FCC Rules. Operation is subject to the following two conditions: (1) this device may not cause harmful interference, and (2) this device must accept any interference received, including interference that may cause undesired operation. This device is authorized under 47 CFR 15.519 (the FCC Rules and Regulations). The operation of this device is subject to the following restriction: This UWB device shall transmit only when it is sending information to an associated receiver. This UWB device shall cease transmission within 10 seconds unless it receives an acknowledgement from the associated receiver that its transmission is being received. An acknowledgement of reception must continue to be received by the transmitting device at least every 10 seconds of operation or the UWB device must cease transmitting.

## Contact

### **IOGEAR**

23 Hubble

Irvine, CA 92618

P 949.453.8782

F 949.453.8785

Visit us at: [www.iogear.com](http://www.iogear.com)

© 2009 IOGEAR® Part No. M1094

IOGEAR, the IOGEAR logo, are trademarks or registered trademarks of IOGEAR, Inc. Microsoft and Windows are registered trademarks of Microsoft Corporation. All other brand and product names are trademarks or registered trademarks of their respective holders. IOGEAR makes no warranty of any kind with regards to the information presented in this document. All information furnished here is for informational purposes only and is subject to change without notice. IOGEAR, Inc. assumes no responsibility for any inaccuracies or errors that may appear in this document.



### Customer's Record

The model number and serial number of this product can be found on the product package. You should note this serial number in the space provided below and retain this book, plus your purchase receipt, as a permanent record of your purchase to aid in identification for Warranty Service purposes.

Model Number \_\_\_\_\_ Serial Number \_\_\_\_\_

### **Note**

---

---

---

---

---

---

---



## About Us



### FUN

IOGEAR offers connectivity solutions that are innovative, fun, and stylish, helping people enjoy daily life using our high technology products.



### GREEN

IOGEAR is an environmentally conscious company that emphasizes the importance of conserving natural resources. The use of our technology solutions helps reduce electronic waste.



### HEALTH

IOGEAR supports healthy and fit lifestyles. By integrating products with the latest scientific developments, IOGEAR's solutions enhance the life of end-users.



## Free Manuals Download Website

<http://myh66.com>

<http://usermanuals.us>

<http://www.somanuals.com>

<http://www.4manuals.cc>

<http://www.manual-lib.com>

<http://www.404manual.com>

<http://www.luxmanual.com>

<http://aubethermostatmanual.com>

Golf course search by state

<http://golfingnear.com>

Email search by domain

<http://emailbydomain.com>

Auto manuals search

<http://auto.somanuals.com>

TV manuals search

<http://tv.somanuals.com>