



ITIpri™ 5232E Four Port Ethernet and Fast Ethernet PCI Host Adapter

Installation and User's Guide

Order Number 9806-5232M

IntraServer Technology, Inc., Copyright 1998
quad_enet.doc

Copyright 1998
First Printing, June 1998

Copyright

Copyright© 1998 IntraServer Technology, Inc. No part of this manual may be reproduced in any form, mechanical or electronic without the prior written consent of IntraServer Technology, Inc. Seven October Hill Road, Holliston, MA 01746.

Trademarks

The following are trademarks of IntraServer Technology, Inc. ITIpci, ClusterReady, and the IntraServer logo. All other trademarks are the property of their respective holders and acknowledged.

Information Subject to Change

The information in this manual is subject to change without notice and should not be construed as a commitment by IntraServer Technology, Inc. Reasonable efforts have been made to assure the accuracy of this manual, IntraServer Technology, Inc. assumes no liability resulting from errors or omissions in this manual or from the use of the information in the manual.

IntraServer retains the right to make changes to this manual and the products without prior written notification.

Readers Comment Card

The Reader's Comments form at the end of this document requests your critical evaluation to assist in preparing future documents

IntraServer Technical Support

Technical support and information is available by calling IntraServer Technology, Inc. direct at 508-429-0425 or your product reseller. IntraServer Technology, Inc.'s World Wide Web site is at <http://www.intraserver.com/>. Product information, support FAQ's, and device drivers are available at the Company's web site.

Class B Device Certification Statements

Federal Communications Commission Radio Frequency Interference Statement

This equipment has been tested and found to comply with the limits for a Class B digital device, pursuant to Part 15 of the FCC rules. These limits are designed to provide reasonable protection against a harmful interference in residential installations. This equipment generates, uses, and can radiate radio frequency energy, and if not installed and used in accordance with the instruction manual, may cause harmful interference to radio communications. However there is no guarantee that interference will not occur in a particular installation. If this equipment does cause interference to radio or television equipment reception, which can be determined by turning the equipment off and on, the user is encouraged to try to correct the interference by one or more of the following measures:

- Reorient or relocate the receiving antenna
- Move the equipment away from the receiver
- Plug the equipment into an outlet on a circuit different from that to which the receiver is powered
- If necessary, the user should consult the dealer or an experienced radio/television technician for additional suggestions

CAUTION: Only equipment certified to comply with Class B (computer input/output devices, terminals, printers, etc.) should be attached to this equipment, and must have shielded interface cables.

This device complies with part 15 of the FCC rules. Operation is subject to the following two conditions: (1) this device may not cause harmful interference and (2) this device must accept any interference received, including interference that may cause undesired operation.

Each host adapter is equipped with an FCC compliance label which shows the FCC Identification number. The full text of the label is in the preceding paragraph.

Finally, any changes or modifications to the equipment by the user not expressly approved by the grantee manufacturer could void the user's authority to operate such equipment.

Canadian Compliance Statement

This Class B digital apparatus meets all requirements of the Canadian Interference-Causing Equipment Regulations.

Cet appareil numérique de la classe B respecte toutes les exigences du Règlement sur le matériel brouilleur du Canada

European Compliance Statement

WARNING: This is a Class B product. In domestic environments this product may cause radio interference in which case the user may be required to take adequate measures.

Please write to IntraServer Technology, Inc, Seven October Hill Road, Holliston, MA 01746 with regards to any questions on this product.

<i>Introduction</i>	6
ITI-5232E Four Port Ethernet and FAST Ethernet Kit Contents	7
Connectors and Indicator LEDs	8
<i>Hardware Installation</i>	9
System Requirements	9
Installing the adapter	9
<i>Network Device Driver Installation Instructions</i>	11
Windows NT	11
Contents of the driver kit	11
Installing the ITI-5232E (DC21X4 Driver) on Windows NT:	12
Windows 95 Installation for PCI systems	18
NetWare	23
Linux	25
For information regarding drivers, installation, and support for Linux please visit our World Wide Web site at http://intraserver.com/support/faq.html	25
Digital UNIX	26
Digital OpenVMS	27
<i>Appendix A</i>	28
Digital's SRM Console Settings	28
Displaying and Setting Ethernet Port Characteristics	28
<i>Appendix B</i>	30
Connector Pin Assignments	30
Cabling Requirements	31
<i>Appendix C: Troubleshooting</i>	32
Windows NT Version 4.0 and 3.51	32
Error messages	32
Driver initialization errors:	33
Driver run time errors:.....	33
Windows 95	34
<i>Appendix D: Adapter Specifications</i>	36
ITI-5232E Four Port 10/100 Ethernet PCI adapter	36

Tables

<i>Table 1 ITI-5232E Adapter Models</i>	7
<i>Table 2 Connections and Indicator LEDs</i>	8
<i>Table 3 Contents of Software Distribution Floppy</i>	11
<i>Table 4 Digital UNIX and OpenVMS SRM Console Media Selection</i>	28
<i>Table 5 8-Pin MJ Connector Pin Assignments</i>	30
<i>Table 6 Adapter to Network Hub Wiring</i>	31
<i>Table 7 Adapter to Adapter (point to point) Wiring</i>	31
<i>Table 8 DC21X4 NT driver error codes</i>	33

Figures

<i>Figure 1 Connectors and Indicator LEDs</i>	8
<i>Figure 2 8-Pin MJ Connector (Front)</i>	30

Introduction

IntraServer's Four Port ITI-5232E provides four FAST (10/100Mb/sec) channels from a single PCI host slot, providing the maximum network integration for high performance network server needs.

Each of four ports is capable of running FAST, FAST Full Duplex, or 10Mb/sec for configuration flexibility, allowing a single card to communicate with FAST or Standard Ethernet systems simultaneously.

With each port capable of up to 200Mb/sec in FAST Full Duplex mode, a single ITI-5232E is capable of up to 800Mb/sec.

ITI-5232E features include:

- High performance PCI bus master, 32-bit direct memory access (DMA) architecture
- Four independent 10/100 Digital 21143-PC Ethernet channels for optimal network performance
- Support for all Alpha and Intel Operating systems, including Windows 95, Netware, Windows NT, OpenVMS, Digital UNIX and Linux.
- Direct 10Base-T and 100Base-TX network connection with full auto-negotiation support
- Half and Full Duplex mode of operation
- Jumperless "Plug and Play" implementation
- Speed, Link Status, Transmit and Receive activity LEDs
- 3.3 and 5.0 volt universal PCI support

All major operating systems are supported on the adapter, including:

- Windows NT, Windows 95, Windows 3.x
- OS/2
- NetWare 3.x, 4.x
- Digital UNIX

- OpenVMS
- MS/DOS
- Linux

Two ITI-5232E models are available, as described in Table 1.

Model	Interrupts Required	Interrupt Assignment	Description
ITI-5232E-N	1	Channel 0 – Interrupt A Channel 1 – Interrupt A Channel 2 – Interrupt A Channel 3 – Interrupt A	Four Port Channel FAST Ethernet Adapter for Windows NT, Windows 95 operating systems that <u>support sharing</u> of PCI interrupts
ITI-5232E-O/U	4	Channel 0 – Interrupt A Channel 1 – Interrupt B Channel 2 – Interrupt C Channel 3 – Interrupt D	Four Port Channel FAST Ethernet Adapter for Digital UNIX, OpenVMS operating systems that <u>do not support sharing</u> of PCI interrupts

Table 1 ITI-5232E Adapter Models

ITI-5232E Four Port Ethernet and FAST Ethernet Kit Contents

Your ITI-5232E kit includes the items shown below. Verify that you have the following items before you proceed with the installation:

- ITI-5232E Four Port Ethernet and FAST Ethernet Adapter
- Software installation kit
- This installation guide

Connectors and Indicator LEDs

The ITI-5232E provides four 8-pin Modular Jack (MJ) connectors for connection with your network. Each of these four ports supports either Twisted Pair Category 3 or 5 cable for 10Mb/s connections, or Category 5 cable for 100Mb/sec operation.

Figure 1 shows the ITI-5232E Adapter connectors and indicator LEDs.

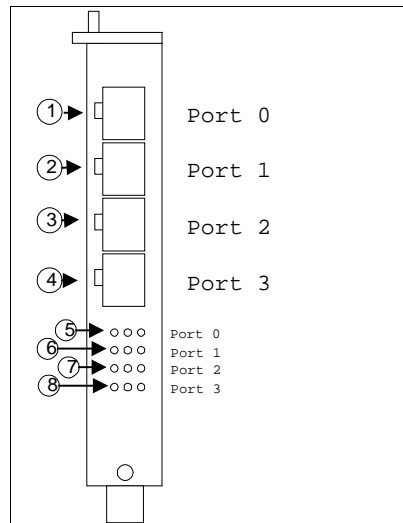


Figure 1 Connectors and Indicator LEDs

Table 2 describes the ITI-5232E Four Port Fast Ethernet Adapter connectors and indicator LEDs.

Reference	Component	Description
①	Channel 0 8-pin MJ Connector	10/100 Mb/s twisted-pair network connector for Channel 0
②	Channel 1 8-pin MJ Connector	10/100 Mb/s twisted-pair network connector for Channel 1
③	Channel 2 8-pin MJ Connector	10/100 Mb/s twisted-pair network connector for Channel 2
④	Channel 3 8-pin MJ Connector	10/100 Mb/s twisted-pair network connector for Channel 3
⑤	Channel 0 Indicator LEDs	100 Mb/s (Left LED) Activity (Center LED) Link (Right LED)
⑥	Channel 1 Indicator LEDs	100 Mb/s (Left LED) Activity (Center LED) Link (Right LED)
⑦	Channel 2 Indicator LEDs	100 Mb/s (Left LED) Activity (Center LED) Link (Right LED)
⑧	Channel 3 Indicator LEDs	100 Mb/s (Left LED) Activity (Center LED) Link (Right LED)

Table 2 Connections and Indicator LEDs

Hardware Installation

This chapter describes how to install the ITI-5232E adapter in your PCI based bus master compatible computer, and how to connect it to your network.

The ITI-5232E host adapter is Plug and Play on the host systems PCI bus, and no configuration of the adapter hardware is necessary.

System Requirements

Before you begin the installation procedure, you will need:

- An available PCI bus master expansion slot
- A system that is compatible with the PCI Specification, Version 2.1
- A floppy disk drive for loading the software drivers
- UTP category 3,4 or 5 cable (type dependant on your network type)

For multi-channel adapters such as the ITI-5232E it is required that your host system firmware or BIOS support PCI bridging. If your host does not support PCI bridging contact your system vendor for a BIOS upgrade. If your system can not be brought into compliance with the PCI bridge specification, then you will not be able to use multi-channel ITIpci host adapters.

Installing the adapter

The following procedure should be used to install the ITI-5332E adapter:

1. Turn OFF the power to the computer system, and to all peripherals directly connected to the system (monitor, printer, external SCSI enclosures, etc.)
2. Unplug the system from the AC power line
3. Use an anti-static strap or precautions to avoid static discharge to your computer system or the ITI-5232E adapter
4. Remove the access cover from your system (refer to the system's documentation)

5. Locate a free PCI expansion slot (small white connector on the system's motherboard) and remove the screw and metal bracket for the selected slot. Be certain not to install the adapter in an ISA or EISA slot, which are longer than the PCI slots
6. Install the adapter in the selected slot. The module should fit without forcing, and should line up with the I/O bulkhead. Be certain that the adapter is fully seated in the slot
7. Replace the retaining screw removed in step 5
8. Connect to your Ethernet HUB using uncrossed Twisted Pair cable.

After installation, re-assemble the system enclosure, and proceed with Software installation.

Network Device Driver Installation Instructions

Windows NT

The ITI-5232E Four Port Ethernet and Fast Ethernet adapter uses the industry leading Fast Network Engine, Digital's DC21143 PCI MAC. Digital's DC21X4.SYS mini-port driver is used to support the four Ethernet channels on the card.

Contents of the driver kit

Your ITI-5232E kit includes a floppy disk, which contains the Windows NT and Windows 95 drivers.

The floppy disk contains the following files and directories:

Operating System	Architecture (NT only)	File Name	File Description
A:\WINNT	\ALPHA	\DC21X4.SYS	The Alpha executable driver file for DC21143 Ethernet Chip
	\INTEL	\DC21X4.SYS	The Intel executable driver file for DC21143 Ethernet Chip
A:\WIN95		\DC21X4.SYS	The Intel executable driver file for DC21143 Ethernet Chip
		\NDIS.VXD	NDIS Wrapper file
A:\		\DISK1	Flag file for NT
		\NETPCI.INF	Win'95 Setup information file
		\OEMSETNT.INF	NT Setup information file
		\README.TXT	Information released since the last publication of the documentation (if any)
		\RELEASE.NOT	Information specific to this software release (if any)

Table 3 Contents of Software Distribution Floppy

Installing the ITI-5232E (DC21X4 Driver) on Windows NT:

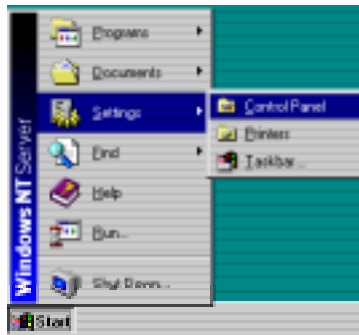
Follow the procedure below to install the NT driver on your Intel or Alpha based system. The choices you are given may vary slightly from these examples based on your machine's current network configuration and options. See your system administrator for any additional information.

Note: Digital's Alpha systems use a dynamic link library file (DLL) called a hardware abstraction layer (HAL). This file can be found on your boot disk at the location \os\hal.dll. This is a system file and is hidden. You must use the "show system and hidden files" option under explorer to see this file.

Certain Alpha systems will hang after installing multi-port Ethernet cards unless this file is updated to hal.dll dated on or after 26-MAY-1998.

If you experience this hang, shut down the machine, and remove the ITI-5232E from your system. Contact Digital for an updated HAL, and installation instructions.

1. From the Windows NT START Menu, select the **Control Panel** icon.



2. From the Control Panel menu select the **Network** icon.



If a dialog box asks you "Do you want to install NT Networking?" select YES and continue. Place the Windows NT installation media the CD-ROM reader, and complete the Windows NT network installation. Consult Windows NT documentation if you are unfamiliar with this process. Follow the on-screen prompts until you are prompted for a Network Adapter Type.

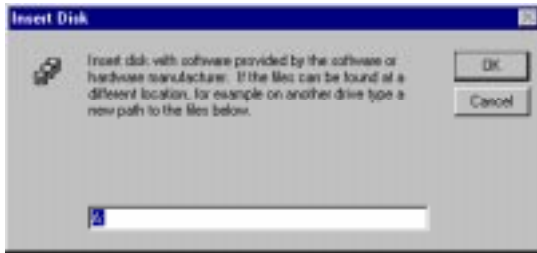
3. From the "Network" dialog, select the **Adapters** tab, then select **Add**.



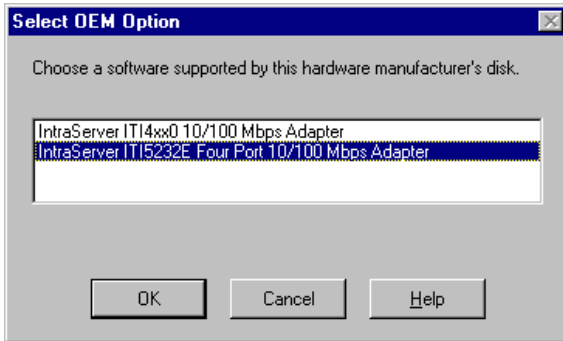
4. From the "Select Network Adapter" dialogue, select **Have Disk...**



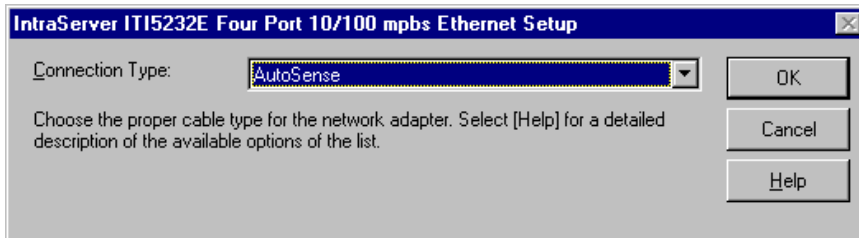
5. Insert the ITI-5232E driver diskette in your floppy drive and select **OK**.



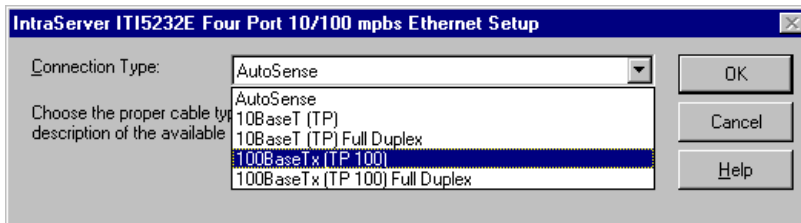
- From the “Select OEM Option” dialogue, Select “IntraServer ITI5232E Four Port 10/100 Mbps Ethernet” adapter, and select **OK**.



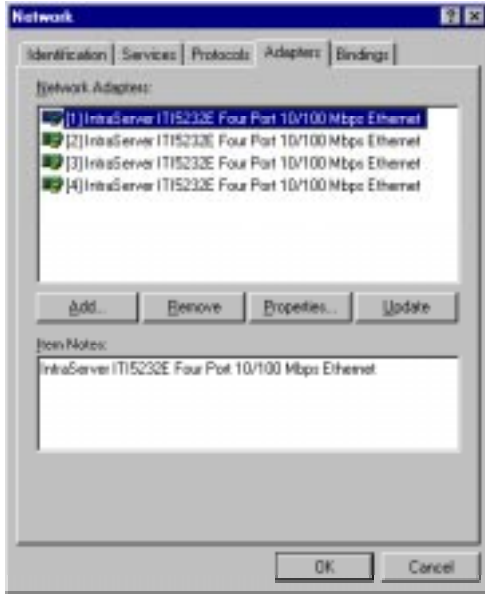
- A “Connection Type” dialog box will allow you to select the connection type appropriate for your network configuration. The default connection type is AutoSense, which should be correct for most network connections.



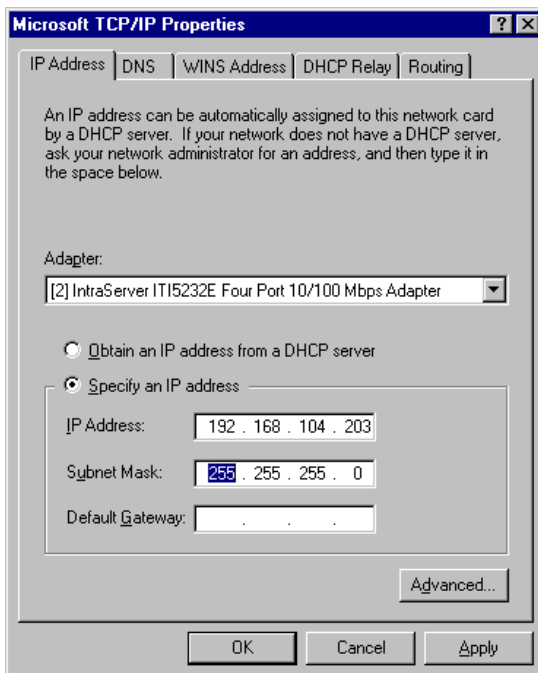
- Should you need to change the media connection type, be certain to select the correct connection type for your network. If not, the adapter port will not be able to “link” to the network.



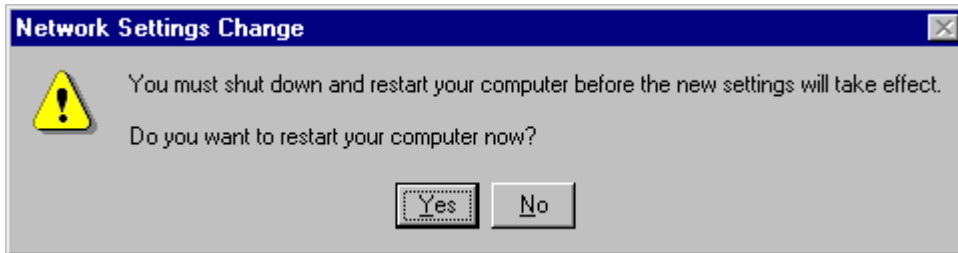
9. Upon completion, the selected adapter port(s) is (are) added to the Installed Adapter Cards list in the Network Setting box (the number prefixing the adapter is the adapter port number).



10. Select **OK** to complete the Network Setting initialization. Based on the protocols you are running, one, or more dialog boxes may appear. See your network administrator for appropriate settings for your network for each of the dialog boxes. A typical dialog (TCP/IP) shown for example.



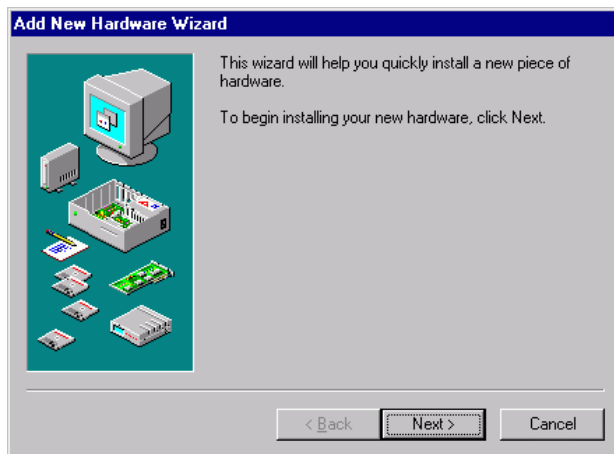
11. Shutdown and reboot the system.



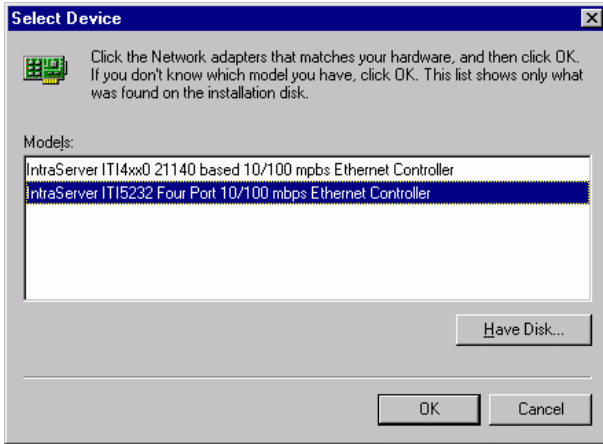
Windows 95 Installation for PCI systems

The following step should be taken in order to use the IntraServer Technology, Inc. ITI-5232E Four Port Fast Ethernet 10/100 adapter in a system running Windows 95:

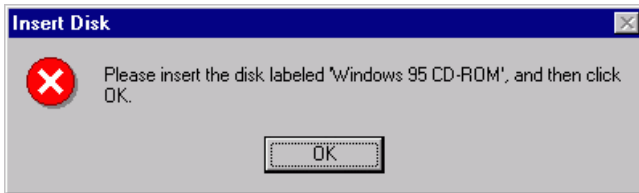
1. Power the machine down, unplug the AC power line, and remove the access cover.
2. Install the ITI5232 into an unused PCI slot. Attach the network cable(s) from the card to your existing network device.
3. Replace the access cover of your machine.
4. Replace the AC power line, and boot Windows 95.
5. When Windows 95 detects the new hardware, a message:
"New Hardware Found, PCI Ethernet Controller" will be displayed.
6. Put the **Software Installation Floppy** in your Floppy drive, then select **Next >**.



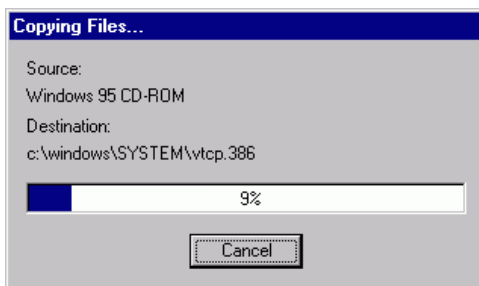
6. Windows '95 will read the installation floppy, and will automatically find the ITI-5232E Four Port Ethernet controller. Select **Finish**. If you are the "Select Device" dialog box to select the "ITI-5232 Four Port 10/100 Mbps Ethernet Adapter" from the list and select **OK**.



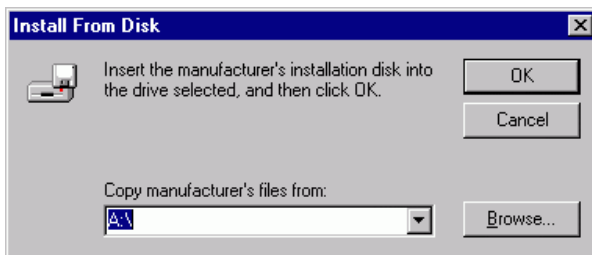
12. Windows '95 may prompt you to insert the distribution media disk(s) to be installed at this time.



13. Some files will be copied from your distribution media disk(s) and some from the OEM distribution floppy disk.



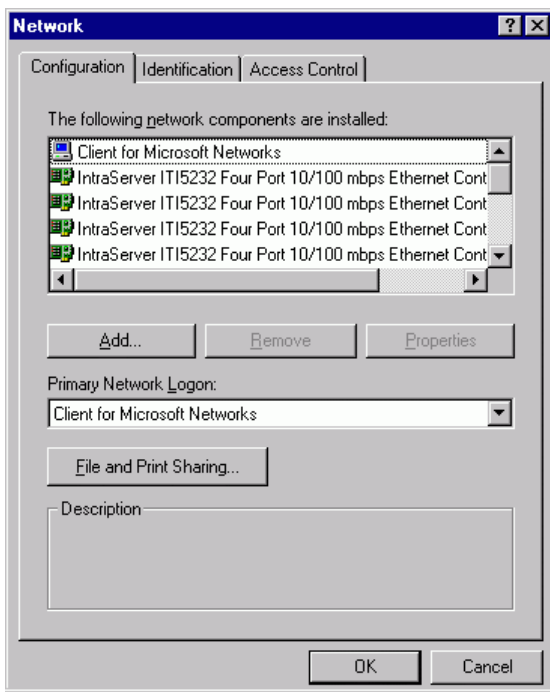
14. If Windows prompts you for a file location of the distribution files, select the default location A:\ and select **OK**.



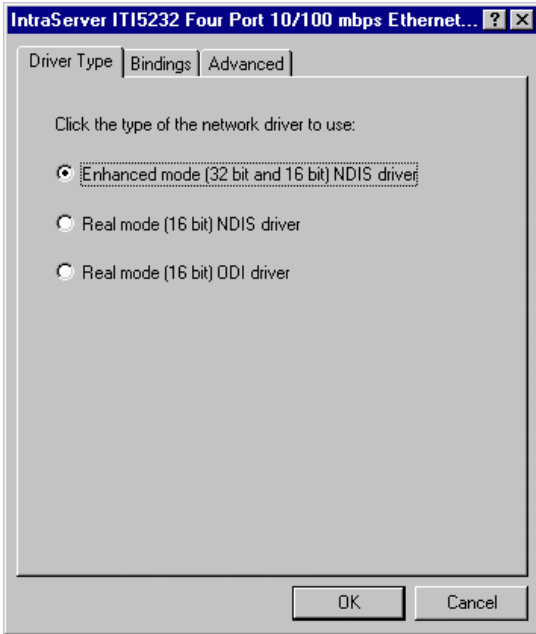
15. When all necessary files have been copied to your system, select **Finish** from the “Add New Hardware Wizard” dialogue.



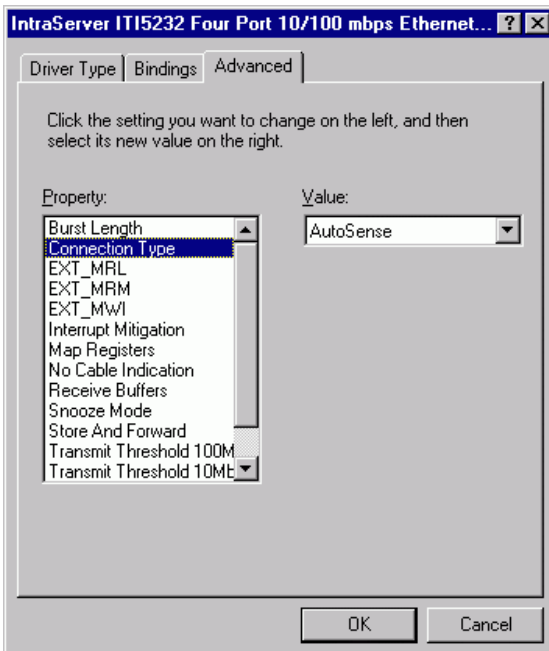
16. The preceding steps will be repeated for EACH of the four ports detected by Windows '95. You will need to repeat the above procedures until each of the four ports have been added to your configuration.
17. Each port on the ITI-5232E Four Port Network adapter will be given an entry in the adapter list in the “Network” dialogue.



18. The Enhanced mode driver should be used, and is selected by default.



19. The ITI-5232E is capable of full AutoSense, which should allow plug and play operation with your network. Should the need arise to specify the physical media, select the “Advanced” tab, then select Connection Type, and select the connection type that matches your network.



20. Select OK. Based on the network protocols running on your system, one or more dialogue boxes may appear. See your network administrator for the network settings for this machine.

21. When prompted, allow the machine to restart, to allow the new network settings to become active.

NetWare

The Novell Netware driver, DC21x4 is used with both Netware 3.1x and Netware 4.x servers.

Netware 3.x Server Driver

1. Prepare the hard drives of your server according to the instructions in your Netware 3.1x documentation.
2. While the server is down, insert the IntraServer Setup diskette into your server's A drive.
3. Copy the contents of a:\netware\311 or a:\netware\312 to the disk from which you boot Netware 3.1x
4. Type SERVER at the DOS prompt press Enter to boot the Netware 3.1x Server.
5. Type LOAD INSTALL at the server console prompt and press Enter
6. Select System Options
7. Select Edit AUTOEXEC.NCF File
8. Edit the autoexec.ncf file. You must load the device driver once for each port used.

NetWare 4.x and 4.11

The Novell Netware driver DC21X4 is used with Netware 4.11 servers.

1. Type LOAD INSTALL at the server console prompt and press Enter.
2. On the Installation Options menu, select Driver options (load/unload disk and network drivers).
3. On the Driver Options menu, select Configure Network Drivers. The system displays the installed network drivers, and the Additional Driver Actions menu
4. Select a driver and press Enter. If the desired IntraServer driver is not on the list, proceed to Step 5.
5. Insert the IntraServer Setup diskette into drive A and press<INS> to install the unlisted driver.
6. Press Enter. The system scans path a:\ for uninstalled drivers.
7. Press Enter to install the NetWare 4.x driver in drive A.
8. Select yes to copy the driver DC21X4

9. Enter information as prompted. You may modify the adapter's default configuration by changing its parameters when prompted. The default settings provide best results in most cases.

Linux

For information regarding drivers, installation, and support for Linux please visit our World Wide Web site at <http://intraserver.com/support/faq.html>

Digital UNIX

Drivers for the ITI-5232E are on the Digital UNIX distribution kit beginning with Version 4.0D. Digital UNIX will identify the ITI-5232E as four 21140 based Ethernet controllers.

Once the hardware is installed in your system, boot the system using *genvmunix*, in the following manner:

```
>>>boot -file genvmunix
```

This will cause Digital UNIX to scan all hardware devices in the system, and identify the ITI-5232E . Four 21140 based Ethernet adapters will be identified.

Create a new kernel with support for the four Ethernet ports, identified in *genvmunix* by using the *doconfig* command.

```
# doconfig
```

When *doconfig* completes backup your existing kernel as follows:

```
# cp /vmunix /vmunix.sav
```

Then copy the new kernel created by *doconfig*, to */vmunix*, and shutdown and reboot with your new kernel.

If you are unfamiliar with *doconfig*, refer to your Digital UNIX documentation for additional information.

Note: Digital UNIX relies on the settings for media type and speed set by the SRM console. See Appendix A for more information.

Digital OpenVMS

Drivers for the ITI-5232E are on the Digital OpenVMS distribution kit beginning with Version 7.1. Digital OpenVMS will identify the ITI-5232E as four 21140 based adapters.

Follow the documentation for the network software you will be running on the adapter for specific configuration information.

Note: Digital OpenVMS relies on the settings for media type and speed set by the SRM console. See Appendix A for more information.

Note: If you are connecting “Point to Point” to another adapter, do not select Auto-Sense for ewa0_mode. Also, many hubs do not support Auto-Sense, it is therefore recommended that the correct media type and speed are selected manually.

Appendix A

Digital's SRM Console Settings

When the ITI-5232E is being used in a Digital Alpha platform running OpenVMS or Digital UNIX, the SRM console is used to set the port speed, media (cable) type and boot protocols, and can also be used to test the module.

After powering your system up, and before booting your operating system, the system will stop at the SRM console prompt. On a uni-processor machine, the SRM prompt is ">>>" and on the primary processor of a multi-processor machine, is "P0>>>".

Digital uses a set of "Environment Variables" to store the settings of certain user definable parameters, which are passed to the operating system to allow the users configuration information to stay consistent when the SRM passes control of the system to the operating system.

Displaying and Setting Ethernet Port Characteristics

The Alpha console recognizes the Ethernet device as an EW port. There are two commands that are necessary for setting and showing the Ethernet port:

SET and SHOW.

Use SHOW to display characteristics of the Ethernet port.

```
>>>Show EWn0_MODE
```

Where 'n' is the Ethernet port letter.

Use SET to set characteristics of the Ethernet port. The available settings for Ethernet media type are shown in Table 4.

Parameter	Settings	Description
EWn0_MODE	TWISTED-PAIR	10Mb/sec Twisted Pair
	FAST	100Mb/sec Twisted Pair Half Duplex
	FULL DUPLEX TWISTED PAIR	Full Duplex Twisted Pair
	AUI	Not Supported
	BNC	Not Supported
	FAST FD	FAST Full Duplex

Table 4 Digital UNIX and OpenVMS SRM Console Media Selection

For example, to set the media type and speed to FAST Twisted Pair, enter the command:

```
>>>set ewa0_mode FAST
```

If you will be remote booting via the Ethernet, you must also set the boot protocol to match that of the boot node. Typically OpenVMS uses MOP protocol and UNIX uses BOOTP.

For example to set a port to MOP (VMS) use:

```
>>>set ewa0_protocol MOP
```

Note: Port 0 will be the lowest controller letter found by the SRM console, "A" if there are no other Ethernet ports in the system. If there is an onboard Ethernet controller, it will be assigned port letter "A" and the ports on your ITI-5232 will be assigned "B,C,D and E" for ports "0,1,2 and 3" respectively.

Appendix B

Connector Pin Assignments

Each of the Four 8-pin MJ connectors for 10/100 Mb/sec are wired as shown in Figure 2:



Figure 2 8-Pin MJ Connector (Front)

With the connection pins assigned as shown in Table 5:

Pin Number	Signal Name	
1	Transmit +	TX (+)
2	Transmit -	TX (-)
3	Receive +	RX (+)
4	No Connection	NC
5	No Connection	NC
6	Receive -	RX (-)
7	No Connection	NC
8	No Connection	NC

Table 5 8-Pin MJ Connector Pin Assignments

Connection from the ITI-5232 adapter to a network hub must be made as shown in Table 6:

Straight Through				
	Adapter Pin		Hub Pin	
TX (+)	1	↔	1	RX (+)
TX (-)	2	↔	2	RX (-)
RX (+)	3	↔	3	TX (+)
	4		4	
	5		5	
RX (-)	6	↔	6	TX (-)
	7		7	
	8		8	

Table 6 Adapter to Network Hub Wiring

Connection from the ITI-5232E adapter to another network adapter (point to point) must be made as shown in Table 7:

Crossover				
	Adapter 1 Pin		Adapter 2 Pin	
TX (+)	1	↔	3	RX (+)
TX (-)	2	↔	6	RX (-)
RX (+)	3	↔	1	TX (+)
	4		4	
	5		5	
RX (-)	6	↔	2	TX (-)
	7		7	
	8		8	

Table 7 Adapter to Adapter (point to point) Wiring

Cabling Requirements

In order for your network to operate properly, you must use a category of network cabling that is appropriate for the data rate of the channel. For 10Mb/s operation, Category 3, 4 or 5 cable is appropriate. When operating in 100Mb/s or 100Mb/s Full Duplex, a Category 5 cable should be used.

The maximum cable segment length supported at 100Mb/sec speed, on Category 5 cable is 100M. Any single cable segment (adapter to adapter or adapter to network hub) must be within the 100M length requirement.

Appendix C: Troubleshooting

Windows NT Version 4.0 and 3.51

The most common problem encountered on Windows NT for Ethernet devices is a mismatch of the port's speed and media settings to those in use on the network. The most simple check of correct cabling is to observe the status lights on the handle of the card.

Once the card is installed in the system, the software is installed, and the module is wired to your network hub, the LINK light should be illuminated. If LINK fails to light, check that your cable type and media settings are correct. Appendix B provides cable information for all configurations.

If you are connected to a FAST hub, be sure card is set to AUTO¹, FAST or FAST Full Duplex, depending on the capability of your hub.

If you are connected to a 10Mb/sec hub, the card should be set to AUTO¹, Twisted Pair or Twisted Pair Full Duplex, depending on the capability of your hub.

Cables from the ITI-5232E to a hub **MUST NOT BE CROSSOVER.**

Cables from the ITI-5232E to another ITI-5232E **MUST BE CROSSOVER.**

¹**TIP: If you are certain your cable type is correct, but you are not seeing LINK, setting the port to match the hub port exactly (ex. FAST, not AUTO). Some hubs have trouble with cards set to AUTO negotiate.**

Error messages

The error messages are logged in the Windows NT Error Log and can be seen using the Error Log Viewer (in NT's Administration Tools group).

Each error message has a standard NDIS error code and a driver's additional code. The additional codes are listed in Table 8.

Error Message	Code
DC21X4_ERRMSG_REGISTRY	0x01
DC21X4_ERRMSG_ALLOC_MEMORY	0x02
DC21X4_ERRMSG_SROM	0x03
DC21X4_ERRMSG_MEDIA	0x04
DC21X4_ERRMSG_LOAD_CAM	0x05
DC21X4_ERRMSG_SYSTEM_ERROR	0x06

Table 8 DC21X4 NT driver error codes

Driver initialization errors:

NDIS_ERROR_CODE_UNSUPPORTED_CONFIGURATION
DC21X4_ERRMSG_REGISTRY

The AdapterType Registry's key is missing or its value is unsupported by the adapter board

NDIS_ERROR_CODE_ADAPTER_NOT_FOUND

No board matching the AdapterCFID Registry's key value was found plugged into the PCI bus or in the slot specified in the Registry

NDIS_ERROR_CODE_OUT_OF_RESOURCES
DC21X4_ERRMSG_ALLOC_MEMORY

Not enough memory to allocate space for the Adapter data block

NDIS_ERROR_CODE_INVALID_VALUE_FROM_ADAPTER
DC21X4_ERRMSG_SROM

Invalid data read from the adapter's serial ROM

NDIS_ERROR_CODE_NETWORK_ADDRESS

No readable burnt_in or software configured station address

NDIS_ERROR_CODE_UNSUPPORTED_CONFIGURATION
DC21X4_ERRMSG_MEDIA

The selected media port is not supported by the board.

NDIS_ERROR_CODE_INTERRUPT_CONNECT

Interrupt initialization failed

NDIS_ERROR_CODE_TIMEOUT DC21X4_ERRMSG_LOAD_CAM

DC21X4 CAM initialization failed

Driver run time errors:

NDIS_ERROR_CODE_HARDWARE_FAILURE
DC21X4_ERRMSG_SYSTEM_ERROR

System_Error interrupt (bus parity error)

NDIS_ERROR_CODE_HARDWARE_FAILURE
DC21X4_ERRMSG_TXM_JABBER_TIMEOUT

Transmit Jabber timer expired

Windows 95

If the adapter is not detected by Windows 95 after installing the adapter, and rebooting Windows 95, check the following:

1. Double click on My Computer/Control Panel/System to display the System Properties Page.
2. Select the Device Manager tab from the System properties page in order to view the list of devices in the PC.
3. Check in the list of devices for an entry labeled Other Devices. If an Other Devices entry exists, double click on it to display the list of devices under it.
4. Check the list for an entry labeled PCI Ethernet Controller. If this exists, select/highlight it by clicking on it and then click on the Remove button at the bottom of the page to delete it.
5. Reboot the PC and the adapter should now be detected.

Appendix D: Adapter Specifications

ITI-5232E Four Port 10/100 Ethernet PCI adapter

Bus Interface	PCI 32-bit bus master
Hardware Interrupts	ITI-5232E-N - supports shared interrupts ITI-5232E-O/U – does not support shared interrupts
Base I/O Addresses	Assigned by BIOS
Data Transfer Rates	Up to 800 Mbps in Fast full duplex mode
Power Requirements	PCI Universal 3.3 or 5 volts at 17 watts
Environmental	
Operating Temperature	0° to 55° C
Humidity	5% to 85% non-condensing
Altitude	3000m maximum
Ethernet Standards	IEEE 802.3 10 Base-T IEEE 802.3u 100 Base-T
Certifications	FCC Class B CE Class B
Electrical Connections	(4) RJ-45 female
Physical Dimensions	9.0" X 4.125"
Network Speeds Supported per Ethernet Network Segment	10 Mbps 20 Mbps Full duplex 100 Mbps 200 Mbps Full duplex
Indication LEDs	Link Activity 100TX link

Free Manuals Download Website

<http://myh66.com>

<http://usermanuals.us>

<http://www.somanuals.com>

<http://www.4manuals.cc>

<http://www.manual-lib.com>

<http://www.404manual.com>

<http://www.luxmanual.com>

<http://aubethermostatmanual.com>

Golf course search by state

<http://golfingnear.com>

Email search by domain

<http://emailbydomain.com>

Auto manuals search

<http://auto.somanuals.com>

TV manuals search

<http://tv.somanuals.com>