

Stealthbox®

INSTALLATION GUIDE
for the
SB-H-CRV/10W3V3
SKU#94429
2007+



Thank you for choosing a JL Audio Stealthbox® for your automotive sound system. With proper installation, your new vehicle-specific enclosed subwoofer system will deliver years of listening pleasure.

We strongly recommend that you have your new Stealthbox® installed by your authorized JL Audio dealer. The installation professionals employed by your dealer have the necessary tools and experience to disassemble and reassemble your vehicle properly. If you prefer to perform your own installation, please read this installation guide completely before beginning the process.

JL AUDIO®
Ahead of the Curve™

! IMPORTANT

If you choose to perform the installation yourself, it is absolutely vital that the Stealthbox® be properly mounted to the vehicle according to these instructions. Failure to mount the enclosure properly presents two problems:

- 1) The sub-bass performance will suffer due to the movement of the enclosure caused by the force exerted by the woofer(s).
- 2) A loose enclosure presents a serious safety hazard in the event of a collision or sudden deceleration.

INSTALLATION DIFFICULTY:

3 OUT OF 5

ESTIMATED TIME:
2-3 HOURS



STEP 1

Remove any contents in the trunk of the car so that you will have a clean area to work in. Place the Wax Square as shown.



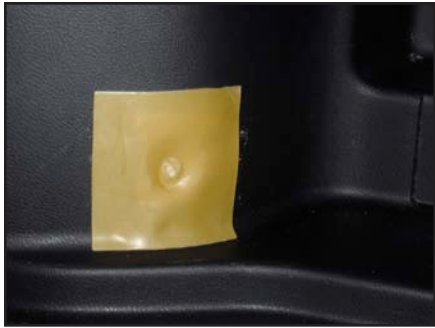
STEP 2

Thread the included Hex Head Bolt into the enclosure so that approximately 1/2" remains exposed (as shown).



STEP 3

Set the Stealthbox in place. Push in and, down as indicated by the arrows to get the bolt to make an impression in the wax square.

**STEP 4**

Remove the enclosure, ensure that an adequate depression has been made in the Wax Square to use it as a guide to drill a hole. If the impression is not present, back the bolt out of the enclosure and, repeat **STEP 3** until there is a well defined impression in the Wax Square.

**STEP 5**

Using a 1 inch hole saw, drill and cut a hole through the inner plastic panel. At the same time, drill the pilot hole only through the metal inner fender panel.

CAUTION

Before drilling, always make sure that you are not going to be drilling into any gas lines, brake lines, transmission lines, electrical wiring, exhaust systems or anything else that might cause a reduction in your weekly pay. Always wear eye protection when drilling.

**STEP 6**

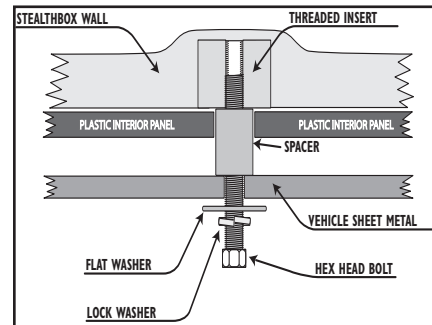
From inside the fender well, insert the Hex Head Bolt, Split Lock Washer and Fender Washer through the hole drilled in **STEP 5**

**STEP 7**

From inside the vehicle, the Hex Head Bolt should protrude well past the interior plastic trim panel.

**STEP 8**

Insert the Spacer over the Hex Head Bolt, through the 1" hole in the interior plastic trim panel so that it will rest against the metal interior fender panel.

**STEP 9**

This illustration details how the hardware should be arranged to mount the Stealthbox® securely.

**STEP 10**

Hook up the wire from the amplifier to the Stealthbox®, and test the Stealthbox® to ensure the correct operation. Have a friend slide the Stealthbox® into position while you turn the Hex Head Bolt in order to get the threads started into the Stealthbox®, tighten the fasteners.

**STEP 11****CONGRATULATIONS!**

You have completed the installation for this model!

Enjoy your new Stealthbox®!

Please refer to the Power Recommendation section for an amplifier recommendation and basic set-up help.

INCLUDED HARDWARE

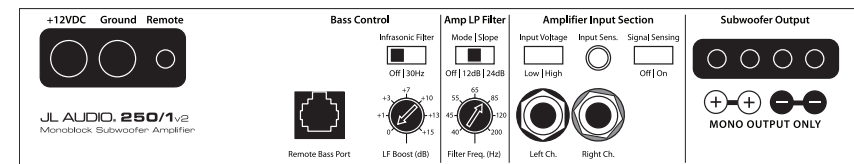
- | | |
|----------------------------------|--------------------------------|
| 1) 3/8" Split Lock Washer | 1) 3/8" x 1 1/4" Fender Washer |
| 1) 3/8-16 x 2 1/2" Hex Head Bolt | 1) 3/8"(ID) x 1" Steel Spacer |

SPECIFICATIONS

Enclosure Type: Acoustic Suspension (sealed)
 Driver Type: 10W3v3-4
 Nominal Impedance: 4 Ohms
 Continuous Power Handling: 500 Watts

POWER RECOMMENDATION

JL Audio recommends using a high quality amplifier such as the JL Audio 250/1v2.
 The diagram below shows the recommended crossover, infrasonic filter and equalizer settings for the 250/1v2 when being used to power your Stealthbox®.



The JL Audio 250/1v2 is a very versatile audio component. Please consult the owner's manual for even more detailed information about installing and tuning this amplifier.

MID/HIGH FREQUENCY DRIVER FITMENT

A variety of JL Audio coaxial and component systems will fit in the factory speaker locations of your vehicle.

Front Speaker Size / Location: 6 1/2" - Front Doors

Fits JL Audio Models: TR650-CXi, TR650-CSi, VR650-CXi, VR650-CSi, C5-650, C5-650x & ZR650-CSi

Rear Speaker Size / Location: 6 1/2" - Rear Door

Fits JL Audio Models: TR650-CXi, TR650-CSi, VR650-CXi, VR650-CSi, C5-650, C5-650x & ZR650-CSi



JL AUDIO®
Ahead of the Curve™

(954) 443-1100

www.jlaudio.com

All specifications are subject to change without notice. "JL Audio" and the JL Audio logo, "Stealthbox" and the Stealthbox logo are registered trademarks of JL Audio, Inc. "Ahead of the Curve" and its respective logo is a trademark of JL Audio, Inc.
 JLA-SKU# 011281 ©11-13-2008 • Printed in USA • ©2008 JL Audio, Inc. • U.S. PATENTS: #5,734,734 #5,949,898 #6,118,884 #6,229,902 #6,243,479 #6,294,959 #6,501,844 #6,496,590 #6,441,685 #5,687,247 #6,219,431 #6,625,292 #D472,891 #D480,709 Other U.S. & Foreign patents pending. For more detailed information please visit us online at www.jlaudio.com.



Free Manuals Download Website

<http://myh66.com>

<http://usermanuals.us>

<http://www.somanuals.com>

<http://www.4manuals.cc>

<http://www.manual-lib.com>

<http://www.404manual.com>

<http://www.luxmanual.com>

<http://aubethermostatmanual.com>

Golf course search by state

<http://golfingnear.com>

Email search by domain

<http://emailbydomain.com>

Auto manuals search

<http://auto.somanuals.com>

TV manuals search

<http://tv.somanuals.com>