

# Stealthbox®

## INSTALLATION GUIDE

for the

### SB-D-TRKEXT/10W1

(Dodge Ram

'94-'01 1500 Club Cab,  
'98-'01 1500 Quad Cab,  
'94-'02 2500 Club Cab,  
'98-'02 2500 Quad Cab,  
'95-'02 3500 Club Cab,  
'98-'02 3500 Quad Cab)



This Stealthbox is a product which requires professional installation skills and tools.

Please read this installation guide thoroughly before beginning the project. It will guide you step by step through the installation. Several of the steps in this process may require two people to accomplish.

It is absolutely vital that the enclosure be properly mounted to the vehicle according to these instructions. Failure to mount the enclosure properly presents two problems: 1) The sub-bass performance will suffer due to the movement of the enclosure caused by the force exerted by the woofer(s) and 2) A loose enclosure presents a serious safety hazard in the event of a collision or sudden deceleration.

*Please enjoy your JL Audio Stealthbox responsibly.*

**JL AUDIO®**  
*Ahead of the Curve™*

[www.jlaudio.com](http://www.jlaudio.com)

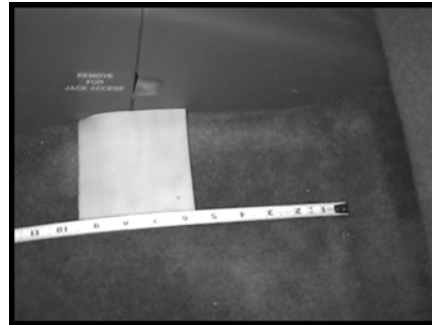
**START  
HERE**



**STEP 1:** Slide the front seats all the way forward and fold-up the rear bench seat.

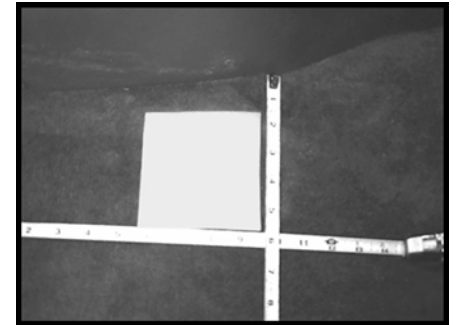


**STEP 2:** Under the rear bench seat, there are a pair of metal brackets which hold the tire changing tools. Bend these up and back so they are out of the way of the enclosure.



**STEP 3:** Place one of the two supplied wax squares to this location (remove paper, sticky side down).

The outside edge of the wax square needs to be flush with the jack storage compartment. The rear edge needs to be 5-1/2" from the ledge at the back of the cab floor.



**STEP 4:** Place the other supplied wax square to this location. (remove paper, sticky side down).

The rear edge needs to be 5-1/2" from the back of the cab. The inside of the wax square needs to be 5-1/2" from the outside edge of the carpet.

**Continued on Next Page →**

Cont.  
From  
Previous  
Page

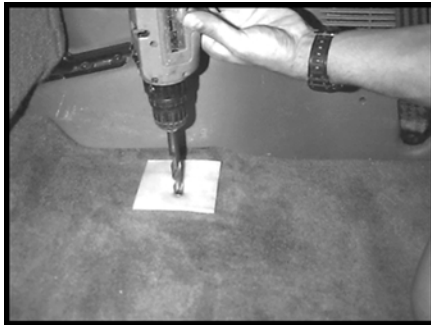


**STEP 5:** Insert the supplied pair of socket cup set screws into the threaded inserts of the bottom of the enclosure. Leave 1/2" exposed.



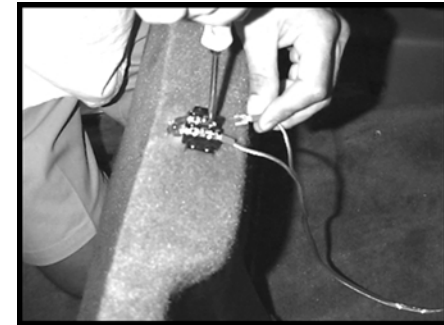
**STEP 6:** With the help of a second person, place the enclosure into the truck and position it in the mounting location. Once in place, firmly press down onto the enclosure. You can even sit on it. This is allowing the socket cup set screws to leave an impression onto the wax squares.

**STEP 7:** Remove the enclosure from the truck. Make sure that the wax square stay adhered to the carpet. Also back out the socket cup set screws to expose 1-1/2".



**STEP 8:** \*Double check under the truck for brake lines, fuel lines or any other wiring.\*

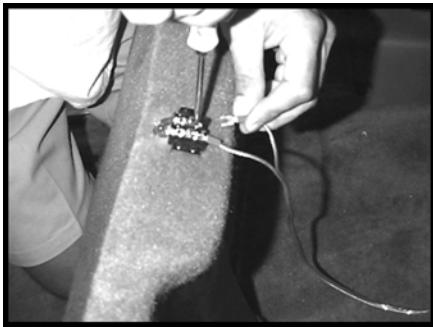
Using a drill and a 1/2" drill bit. Drill at the impression on the wax squares as a guide.



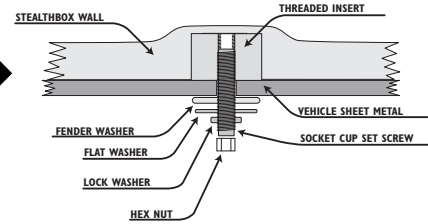
**STEP 9:** Double check the woofers for proper functioning.

Run speaker wire to the enclosures mounting location and secure it to the wire terminal on the enclosure.

Cont. From Previous Page



**STEP 10:** Place the enclosure back into the mounting location. Line up and guide the two socket cup set screws through the drilled holes from **STEP 8**.



**CONGRATULATIONS! INSTALL COMPLETE.**

**STEP 9:** Double check the woofers for proper functioning.

Run speaker wire to the enclosure's mounting location and secure it to the wire terminal on the enclosure.

**STEP 11:** With the supplied hardware, place as in order of direction.

Place the fender washer, flat washer, lock washer and then hex nut onto the protruding socket cup set screws.

Adjust the socket cup set screws for more or less threads that are needed. Hand tighten the nuts, till both mounting assemblies are on.

Tighten securely.

**Included Hardware:**

- (2) 3/8"-16 X 2-1/4" Socket Set Screw
- (2) 3/8" Fender Washers
- (2) 3/8" Flat Washer
- (2) 3/8" Lock Washer
- (2) 3/8"-16 Hex Nut

**Difficulty Of Installation:**



**Specifications:**

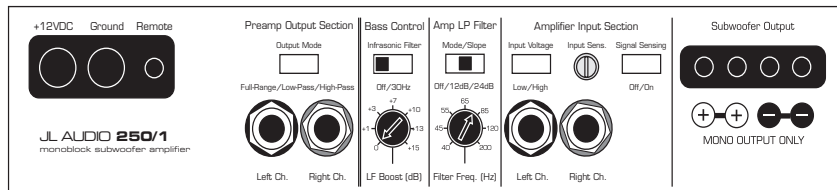
**Enclosure Type:** Acoustic Suspension (Sealed)

**Driver Type:** (2)10W1-8

**Nominal Impedance:** 4Ω

**Cont. Power Handling:** 250Watts

JL Audio recommends using a high quality amplifier such as the JL Audio 250/1. The diagram below shows the recommended crossover, infrasonic filter and equalizer settings for the 250/1 when being used to power your Stealthbox®.



The JL Audio 250/1 is a very versatile audio component. Please consult the owner's manual for detailed information about installing and tuning this amplifier.

**Mid/High Frequency Driver Information:**

**Front Location Driver Size:**

6"x9"

**Applicable JL Audio Products:**

N/A

**Rear Location Driver Size:**

5.25"

**Applicable JL Audio Products:**

TR,VR,XR525-CX1



**JL AUDIO®**  
*Ahead of the Curve™*  
[www.jlaudio.com](http://www.jlaudio.com)

10369 N. Commerce Pkwy, Miramar, Florida 33025-392

Phone: 954.443.1100

Fax: 954.443.1111

SB-D-TRKEXT/10W1, JL AUDIO, Inc 2004

Page 3

Sheet SKU#011105 Revision6/28/2004

## Free Manuals Download Website

<http://myh66.com>

<http://usermanuals.us>

<http://www.somanuals.com>

<http://www.4manuals.cc>

<http://www.manual-lib.com>

<http://www.404manual.com>

<http://www.luxmanual.com>

<http://aubethermostatmanual.com>

Golf course search by state

<http://golfingnear.com>

Email search by domain

<http://emailbydomain.com>

Auto manuals search

<http://auto.somanuals.com>

TV manuals search

<http://tv.somanuals.com>