

Stealthbox®

INSTALLATION GUIDE
for the
SB-F-ESCP/10W1v2
SKU#94440
Ford Escape, Mazda Tribute - 2001+
Mercury Mariner - 2005+



Thank you for choosing a JL Audio Stealthbox® for your automotive sound system. With proper installation, your new vehicle-specific enclosed subwoofer system will deliver years of listening pleasure.

We strongly recommend that you have your new Stealthbox® installed by your authorized JL Audio dealer. The installation professionals employed by your dealer have the necessary tools and experience to disassemble and reassemble your vehicle properly. Also, keep in mind that your warranty coverage extends to 2 years if your system is installed or approved by your authorized JL Audio dealer. If you prefer to perform your own installation, please read this installation guide completely before beginning the process.

JL AUDIO®
Ahead of the Curve™

! IMPORTANT

If you choose to perform the installation yourself, it is absolutely vital that the Stealthbox® be properly mounted to the vehicle according to these instructions. Failure to mount the enclosure properly presents two problems:

- 1) The sub-bass performance will suffer due to the movement of the enclosure caused by the force exerted by the woofer(s).
- 2) A loose enclosure presents a serious safety hazard in the event of a collision or sudden deceleration.

INSTALLATION DIFFICULTY:

3 OUT OF 5

ESTIMATED TIME:
2-3 HOURS



STEP 1

Remove the cover in front of the pocket as shown.



STEP 2

This is how it looks after removing the cover.



STEP 3

Remove the woofer from the Stealthbox®. Hold the enclosure in place and use a marker to mark the interior panel through the hole in the back of the Stealthbox®

**STEP 4**

Drill a 1" hole in the interior panel where marked as **STEP 3** as shown.

Note: Before drilling, make sure that you are not going to be drilling into any gas lines, brake lines, transmission lines, electrical wiring, transfer case (4x4 vehicles) or anything else that might cause a reduction in your weekly pay. Always wear eye protection when drilling!

**STEP 5**

Remove bottom trunk plastic trim panel as shown.

**STEP 6**

Remove bottom plastic trim piece from rear left door opening.

**STEP 7**

Remove side panel as shown.

**STEP 8**

The interior with the side panel removed. Note where the bracket had been previously installed

**STEP 9**

This shows the holes where the bracket mounts.

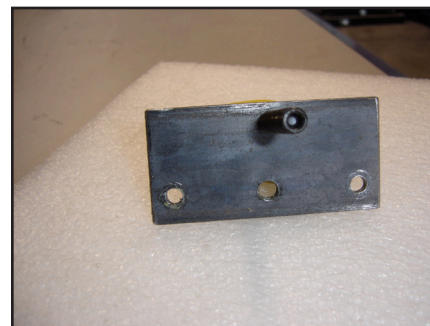
**STEP 10**

Mount the bracket.

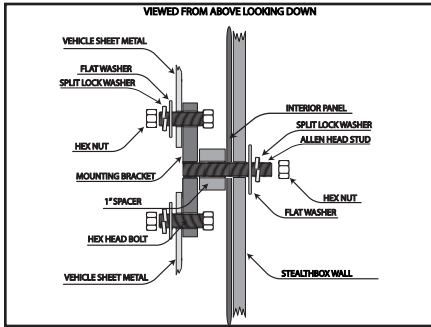
The bracket will be oriented as shown with all three bolts in a straight line in the newer vehicles.

For the older models, the bracket will be mounted upside down to the photo at left with the stud threaded into the "triangular" hole and, above the two mounting bolts as shown below

Please refer to the detail pictures for further clarification.

**STEP 10 DETAIL (1)**

The bracket will be mounted as shown at left in the older model vehicles.



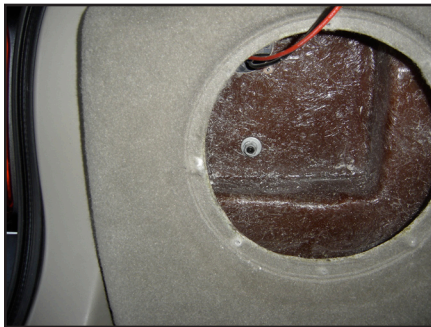
STEP 10 DETAIL (2)

This is how the hardware should be configured for the bracket and, the Stealthbox®.



STEP 11

Expand the round hole in the interior panel from **STEP 4** as shown, re-install all of the the interior panels that were removed earlier, place the 1" Spacer (included) over the Stud as shown.



STEP 12

Put the box in the panel and line it up with the bolt. Make sure to run speaker wire from the enclosure to the location of the amp before securing it to the vehicle.



STEP 13

Mount woofer to the box . place grill over the speaker, secure the woofer and you are done.

CONGRATULATIONS!

You have completed the installation for this model!

Enjoy your new Stealthbox®!

Please refer to the Power Recommendation section for an amplifier recommendation and basic set-up help.

INCLUDED HARDWARE

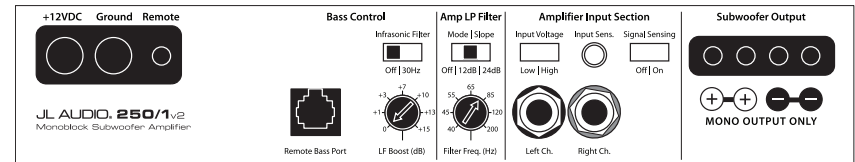
- 2) 1/4-20 x 1 1/4" Hex Head Bolt
- 2) 1/4" Split Lock Washer
- 1) 3/8" Split Lock Washer
- 1) 3/8-16 x 2 1/4" Allen Head Stud
- 1) Custom Mount bracket
- 2) 1/4-20 Hex Hed Nut
- 2) 1/4" Flat Washer
- 1) 3/8" Flat Washer
- 1) 1" Spacer

SPECIFICATIONS

Enclosure Type: Acoustic Suspension (sealed)
 Driver Type: 10w1v2-4
 Nominal Impedance: 4 ohms
 Continuous Power Handling: 300watts

POWER RECOMMENDATION

JL Audio recommends using a high quality amplifier such as the JL Audio 250/1v2. The diagram below shows the recommended crossover, infrasonic filter and equalizer settings for the 250/1v2 when being used to power your Stealthbox®.



The JL Audio 250/1v2 is a very versatile audio component. Please consult the owner's manual for even more detailed information about installing and tuning this amplifier.

MID/HIGH FREQUENCY DRIVER FITMENT

A variety of JL Audio coaxial and component systems will fit in the factory speaker locations of you vehicle.

Front Speaker Size / Location: 5"x 7" / 6"x 8"- Front Doors
 Fits JL Audio Models: TR570-CXi, C5-570, C5-570x & ZR570-CSi

Rear Speaker Size / Location: 5"x 7" / 6"x 8"- Rear Door
 Fits JL Audio Models: TR570-CXi, C5-570x



JL AUDIO®
Ahead of the Curve™

(954) 443-1100 www.jlaudio.com

All specifications are subject to change without notice. "JL Audio" and the JL Audio logo, "Stealthbox" and the Stealthbox logo are registered trademarks of JL Audio, Inc. "Ahead of the Curve" and its respective logo is a trademark of JL Audio, Inc.
 JLA-SKU# 011286 01-22-2009 • Printed in USA • ©2008 JL Audio, Inc. • U.S. PATENTS: #5,734,734 #5,949,898 #6,118,884 #6,229,902 #6,243,479 #6,294,959 #6,501,844 #6,496,590 #6,441,685 #5,687,247 #6,219,431 #6,625,292 #D472,891 #D480,709 Other U.S. & Foreign patents pending.
 For more detailed information please visit us online at www.jlaudio.com.



Free Manuals Download Website

<http://myh66.com>

<http://usermanuals.us>

<http://www.somanuals.com>

<http://www.4manuals.cc>

<http://www.manual-lib.com>

<http://www.404manual.com>

<http://www.luxmanual.com>

<http://aubethermostatmanual.com>

Golf course search by state

<http://golfingnear.com>

Email search by domain

<http://emailbydomain.com>

Auto manuals search

<http://auto.somanuals.com>

TV manuals search

<http://tv.somanuals.com>