

SB-F-MU94+/1OW3 STEALTHBOX™
Fits '94-Up Ford Mustang® Coupe.
SB-F-MUCONV/1OW6 STEALTHBOX™
Fits '94-Up Ford Mustang® Convertible.

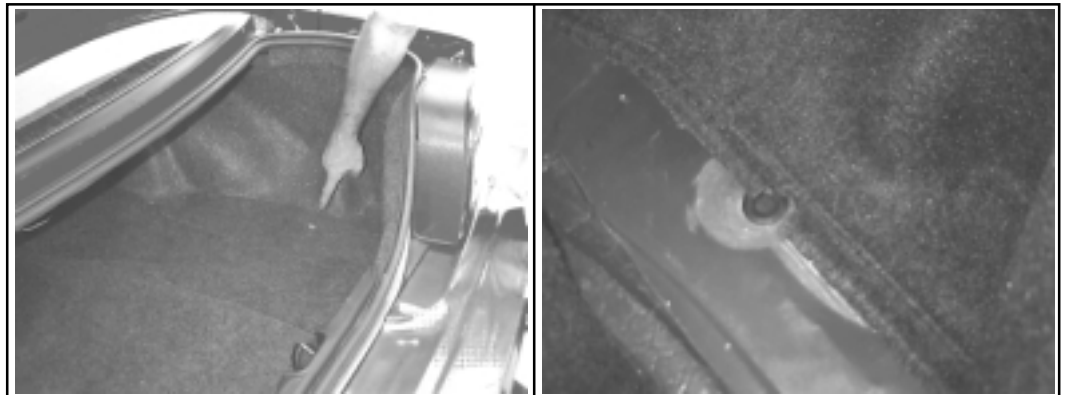
Installation Guide:

This Stealthbox is a product which requires professional installation skills and tools. Please read this installation guide thoroughly before beginning the project. It will guide you step by step through the installation. Several of the steps in this process may require two people to accomplish.

This enclosure is designed to mount in the trunk compartment behind the passenger side wheel well. It is absolutely vital that the enclosure be properly mounted to the vehicle according to these instructions. Failure to mount the enclosure properly presents two problems: 1) The force exerted by the woofer will cause the enclosure to move, resulting in degraded sub-bass performance 2) A loose enclosure could cause damage or injury in the event of a collision or sudden jolt.

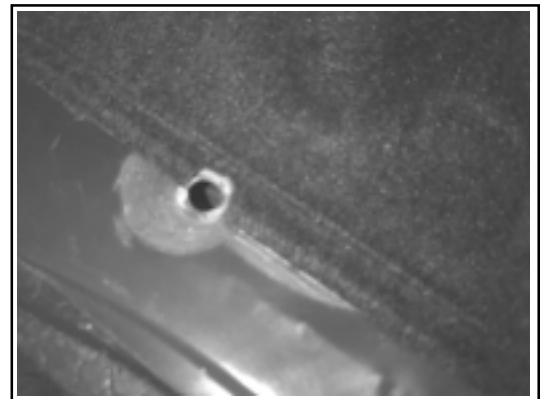
Please note that all pictures used in these instructions were taken in the hard-top version of the Mustang.

STEP 1: Lift carpet up over the enclosure mounting area. This will expose a rubber plug installed by the factory in the floor of the trunk.



STEP 2: Remove the rubber plug, exposing the hole in the floor of the trunk.

STEP 3: At this time, remove the side carpeting and install sound deadening material to the inside fender wall, if desired. This will reduce panel rattle which is primarily audible from outside the car.



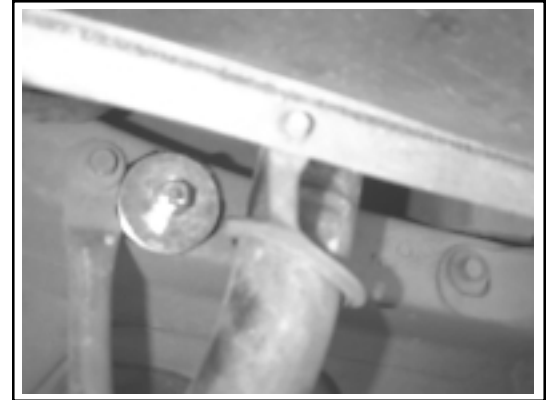
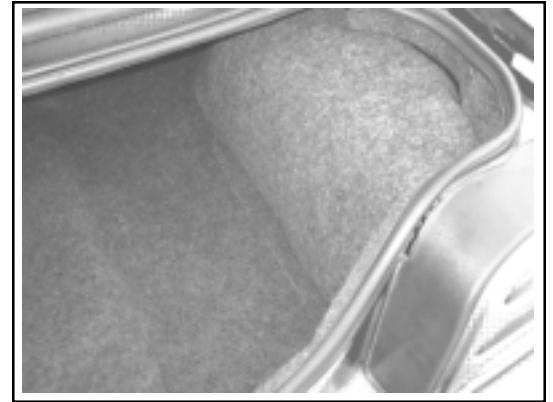
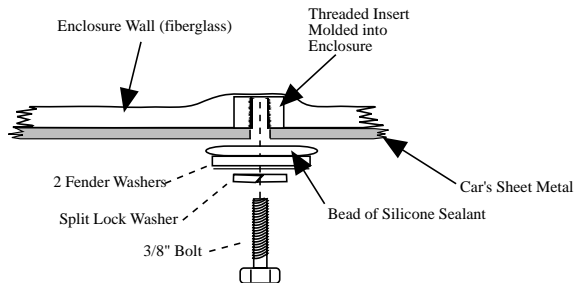
STEP 4: Place factory carpet back over hole. Locate the hole in the floor through the carpet and cut through the carpet to allow the mounting bolt to pass through the hole.

STEP 5: Route speaker wires so that they are not pinched under the Stealthbox.



STEP 6: Connect speaker wires and test the enclosure.

STEP 7: Position the Stealthbox in its mounting location, making sure it is aligned properly.

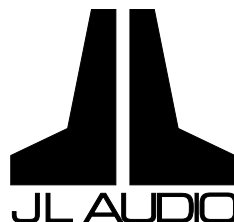


STEP 8: While one person holds the Stealthbox in place from above, the other person inserts the bolt, lock washer and fender washers from underneath the vehicle. Put a bead of silicone sealant between the car's sheet metal and the fender washers.

STEP 9: Tighten box firmly.

IMPORTANT!!!

Once the bolts are tightened, spray undercoating onto the bolt heads from underneath the car to prevent rust, leaks and loosening of the bolts over time. Failure to do so may result in severe corrosion and may create a safety hazard.



10369 N. Commerce Pkwy, Miramar, Florida 33025-3921 Voice: (954) 443-1100 Fax: (954) 443-1111

Free Manuals Download Website

<http://myh66.com>

<http://usermanuals.us>

<http://www.somanuals.com>

<http://www.4manuals.cc>

<http://www.manual-lib.com>

<http://www.404manual.com>

<http://www.luxmanual.com>

<http://aubethermostatmanual.com>

Golf course search by state

<http://golfingnear.com>

Email search by domain

<http://emailbydomain.com>

Auto manuals search

<http://auto.somanuals.com>

TV manuals search

<http://tv.somanuals.com>