



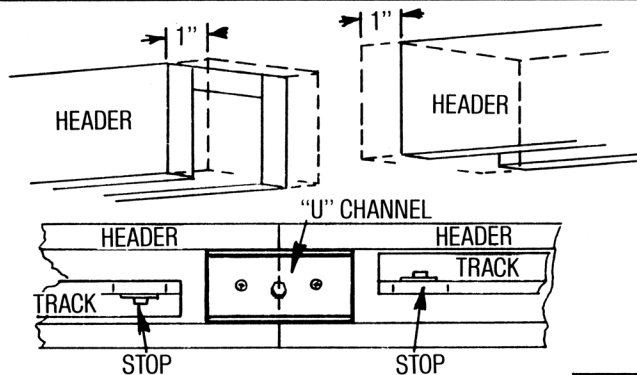
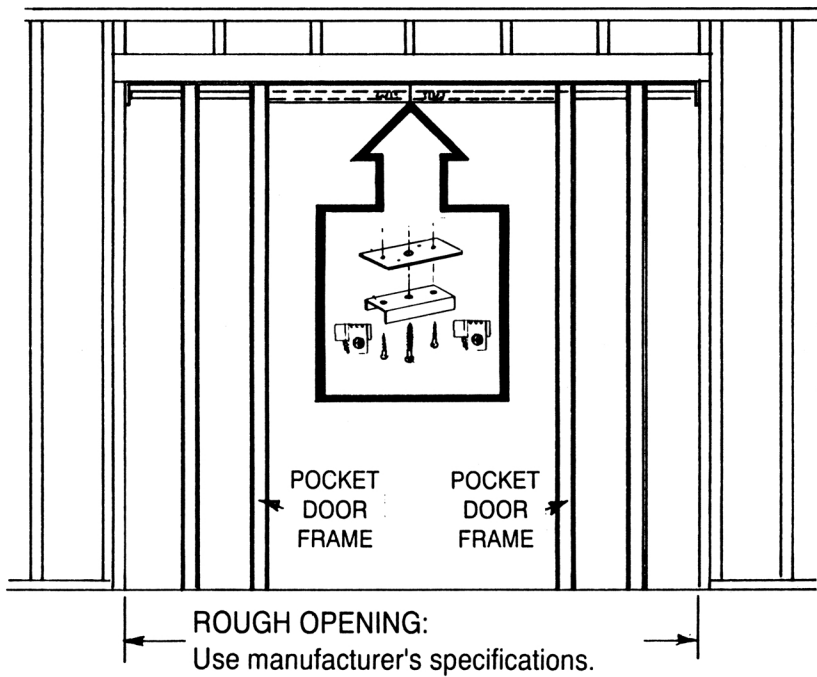
www.johnsonhardware.com

# INSTRUCTIONS

## 2555 CONVERGING DOOR KIT

### FOR 2 PD FRAMES USING 2800 OR 2850 TRACKS

For use only with  
2800 or 2850 Tracks



1. Remove and discard end brackets on door opening end of pocket door frames.
2. Cut 1" off end of header where end brackets have been removed.
3. Butt cut ends of header together and place "U" channel, aligning cut ends of headers with center mark stamped in channel. Drill two 3/16" (4.7mm) holes through headers at outer channel holes. Insert screws through these holes and into top plate on header.
4. Drill a 1/4" (6.3mm) hole at channel center where header ends meet to enable the lag screw to be fastened into rough header for increased center support.
5. Insert stops into track and leave loose until doors are hung, then adjust and tighten so that doors just touch each other in center of opening.



## Free Manuals Download Website

<http://myh66.com>

<http://usermanuals.us>

<http://www.somanuals.com>

<http://www.4manuals.cc>

<http://www.manual-lib.com>

<http://www.404manual.com>

<http://www.luxmanual.com>

<http://aubethermostatmanual.com>

Golf course search by state

<http://golfingnear.com>

Email search by domain

<http://emailbydomain.com>

Auto manuals search

<http://auto.somanuals.com>

TV manuals search

<http://tv.somanuals.com>