



www.johnsonhardware.com

INSTRUCTION

Series 1138

SLIDING DOOR HARDWARE

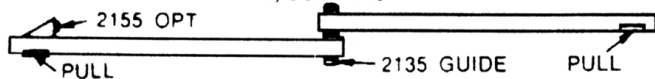
For 1-3/8" DOORS
UP TO 50 LBS.

FINISHED OPENING WIDTHS

(FROM INSIDE TO INSIDE OF FINISHED DOOR JAMBS)

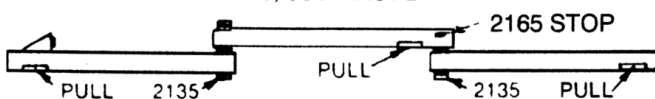
2 DOOR

MULTIPLY DOOR WIDTH BY 2, SUBTRACT 1"



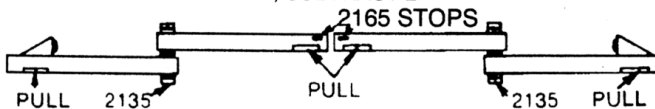
3 DOOR

MULTIPLY DOOR WIDTH BY 3, SUBTRACT 2"



4 DOOR

MULTIPLY DOOR WIDTH BY 4, SUBTRACT 2"



ACCESSORIES AVAILABLE:



2136 CARPET RISER

A firm base for door guide when carpeting is used through opening.



#30 PULL - 2 1/8" Dia.

All pulls are available in three finishes.

NOT FURNISHED IN HARDWARE SET



2155 Stop
Limits Door Travel



#35 PULL

Note:

Use only on solid doors

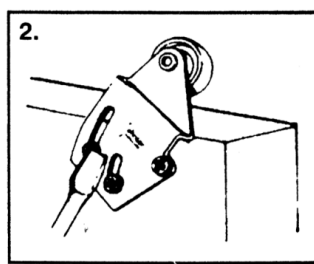
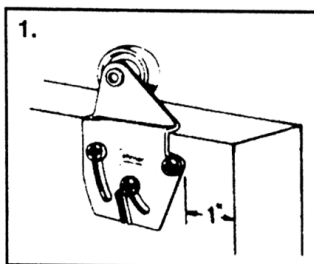


#40 PULL

FOR 1-3/8" DOORS

Mount track as shown in diagram at right. Fasten hangers on back side of rear door and drill doors for pulls, 36" from bottom of door.

NOTE: To obtain full adjustment possibilities, screws must be located at TOP of each slot as shown in Fig. 1. Raise all hangers to top adjustment as shown in Fig. 2 when installing doors.

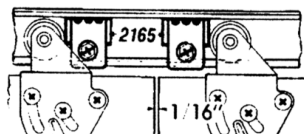
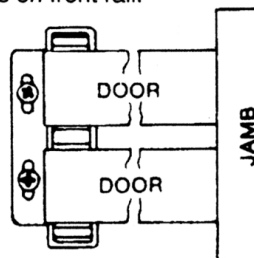


MOUNT REAR DOOR FIRST by tilting door back and resting hangers on rear rail.

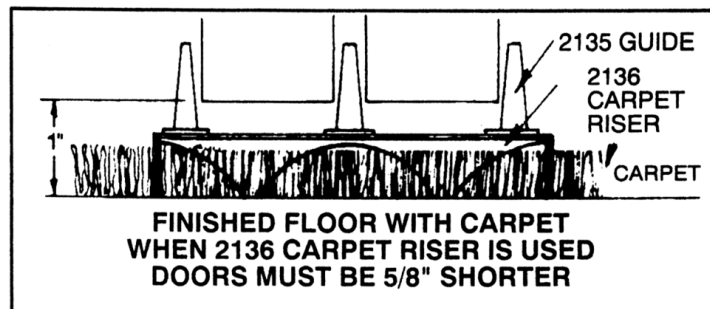
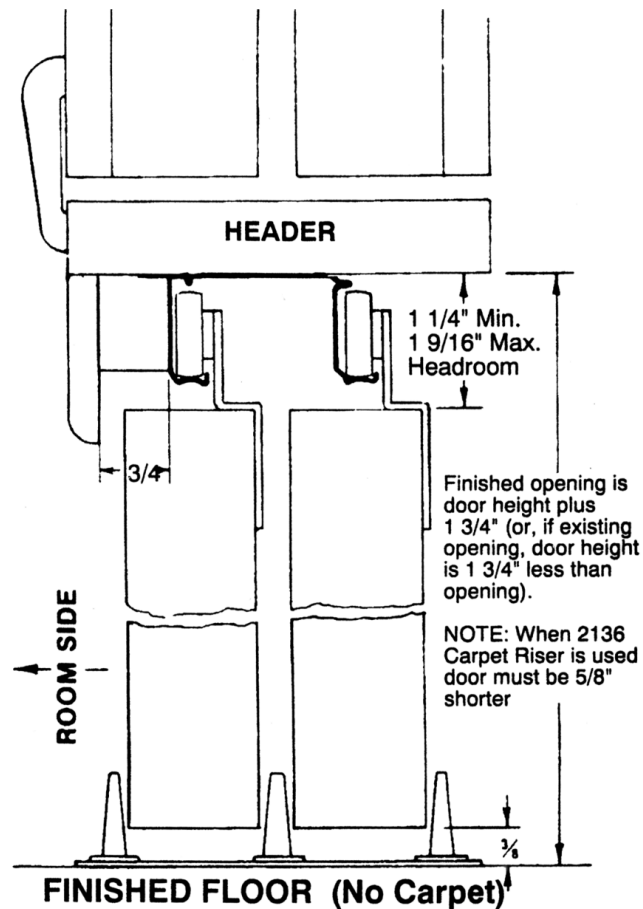


MOUNT FRONT DOOR same way by tilting back and placing hangers on front rail.

DOOR GUIDE is located by moving both doors to jamb on one side, positioning guide between doors as shown, and fastening to floor. If floor is carpeted, use Johnson 2136 CARPET RISER.



2165 STOPS (4 DOOR SETS)



Free Manuals Download Website

<http://myh66.com>

<http://usermanuals.us>

<http://www.somanuals.com>

<http://www.4manuals.cc>

<http://www.manual-lib.com>

<http://www.404manual.com>

<http://www.luxmanual.com>

<http://aubethermostatmanual.com>

Golf course search by state

<http://golfingnear.com>

Email search by domain

<http://emailbydomain.com>

Auto manuals search

<http://auto.somanuals.com>

TV manuals search

<http://tv.somanuals.com>