

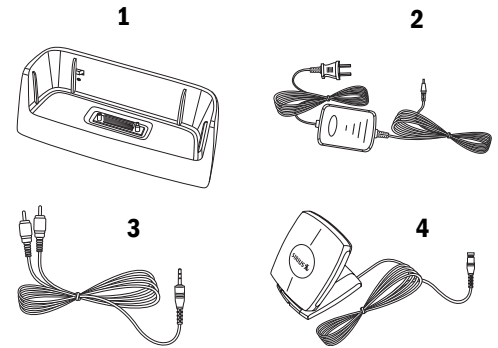
Thank you for purchasing the KPA-H2EH Home Docking Kit. The KPA-H2EH includes everything you need to install the Kenwood Here2Everywhere™ Portable SIRIUS® Satellite Tuner in your home. Use this document to familiarize yourself with the KPA-H2EH features. For the latest information about this and other Kenwood products, visit the Kenwood USA Corporation Web site at: www.kenwoodusa.com

KPA-H2EH Package contents

Unpack your KPA-H2EH and carefully make sure that everything listed here is present. This kit includes:

1. Home Docking Cradle
2. Home Power Supply
3. Stereo Mini-Jack Cord (Stereo Male RCA to 3.5mm Male Mini Plug)
4. Home Antenna

If anything is missing or damaged, or if your Here2Everywhere fails to operate, notify your dealer immediately. Kenwood recommends that you retain the original carton and packing materials in case you need to ship the KPA-H2EH in the future.



Safety precautions

Warning

Take the following precautions to prevent traffic accidents and avoid personal injury:

- To avoid short circuits, never put or leave any metallic objects (coins, tools, etc.) inside the unit.
- If the unit emits smoke or strange smells, turn the power off immediately and consult your Kenwood dealer.
- Do not drop the unit or subject it to strong shocks.
- If the LCD display becomes damaged or broken, do not touch the liquid crystal fluid. The fluid may be dangerous to your health or even fatal. If the liquid crystal fluid contacts your body or clothing, immediately wash it off with soap and water.

Caution

Take the following precautions to keep the unit in proper working order:

- Be sure the unit is connected to a 12V DC power supply with a negative ground connection.
- Do not open the unit.
- Do not install the unit where it will be exposed to high levels of humidity, moisture, or dust.

FCC Warning

This equipment may generate or use radio frequency energy. Changes or modifications to this equipment may cause harmful interference unless the modifications are expressly approved in this instruction manual. The user could lose the authority to operate this equipment if an unauthorized change or modification is made.

This equipment has been tested and found to comply with the limits for a Class B digital device, pursuant to Part 15 of the FCC Rules. These limits are designed to provide reasonable protection against harmful interference in a residential installation. This equipment may cause harmful interference to radio communications if it is not installed and used in accordance with these instructions. However, there is no guarantee that interference will not occur in a particular installation. If this equipment does cause harmful interference to radio or television reception, which can be determined by turning the equipment off and on, the user is encouraged to try to correct the interference by one of more of the following measures:

- Reorient or relocate the receiving antenna
- Increase the separation between the equipment and receiver
- Connect the equipment into an outlet on a circuit different from that to which the receiver is connected
- Consult the dealer or an experienced radio/TV technician for help

Note

If the unit doesn't seem to be working properly:

- Turn the unit's power off, wait 5-10 seconds, then turn the power on again.
- If the unit still fails to operate, turn the unit's power off, remove it from the cradle, wait 5 - 10 seconds, replace it in the cradle and turn the power back on.
- If the problem persists, consult your Kenwood dealer.

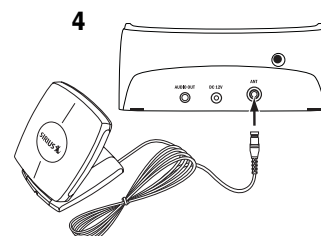
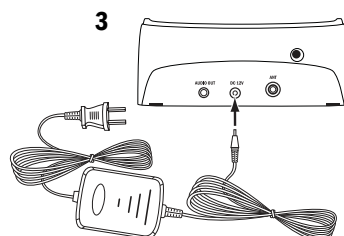
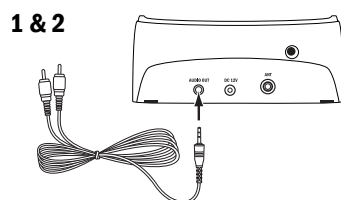
Cleaning the unit

If the unit becomes dirty, turn its power off and wipe it clean with a soft dry cloth. Do not use hard cloths or paint thinner, alcohol, or other volatile solvents to clean the unit. These may cause damage or remove indicator characters.

INSTALLATION IN A HOME

Note: Do not put the H2E in the docking station until you have completed the installation.

1. Plug the audio cable's mini connector into the back of the cradle, as shown.
2. Plug the audio cable's white (L ch.) and red (R ch.) connectors into your audio system's available audio input.
3. Plug the AC cord into the power supply, then plug the power supply into the back of the cradle, as shown. Don't plug the AC cord into a wall outlet until the installation is completed.
4. Plug the antenna into the back of the cradle until it is firmly seated, as shown.



Finding a Location for the Antenna

Due to the paths of the SIRIUS satellites over the US, the best location for the antenna will depend on what part of the country you live in, the orientation of your home and the locations of any obstructions that could prevent the satellite signal from reaching the antenna.

The best antenna location is on the roof, facing straight up (see illustration).

- The location of the "X" on the map must be visible to the antenna

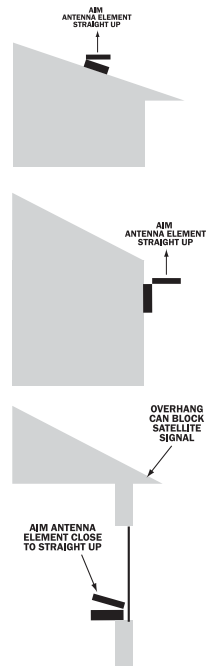
The second best antenna location is on an outside wall.

- Select an appropriate wall, depending on where you live (refer to the map). The location of the "X" on the map must be visible to the antenna.
- Mount the antenna facing as close to straight up as possible (right).
- To minimize interference caused by roof extensions, mount the antenna as low on the wall as possible while avoiding other obstructions (below).

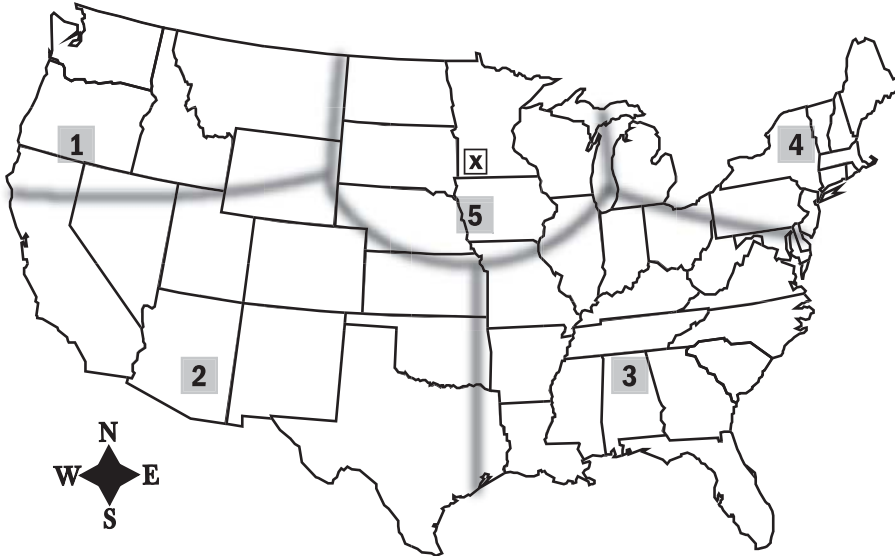
Note: Objects such as the following can prevent the antenna from receiving the satellite signal when placed at a window or on an outside wall:

- roof extensions
- the window frame
- metallic window screens or tinting
- objects in the window
- nearby objects like trees, foliage or buildings

If the signal is blocked from getting to the antenna, the antenna must be relocated to a more appropriate window, an outside wall free of obstructions, or on the roof.



Use this map as a general placement guideline—some experimentation may be needed to obtain the best reception in your particular situation. (See the Antenna Aiming section below for more information about using the ANTENNA SIGNAL screen to aim the antenna.)



If you live in:

Section 1 -

Use a **NORTHEAST** or **EASTFACING** wall or window

Section 2 -

Use a **NORTHEAST** or **NORTHFACING** wall or window

Section 3 -

Use a **NORTHWEST** or **NORTHFACING** wall or window

Section 4 -

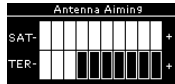
Use a **NORTHWEST** or **WESTFACING** wall or window

Section 5 -

Place the antenna **ONLY ON THE ROOF** or **ON AN OUTSIDE WALL**

Antenna Aiming

From the Menu option of your Here2Everywhere tuner, you can access and set up the Antenna Aiming feature. Refer to your Here2Everywhere Instruction Manual for more details. Upon selecting this option, Here2Everywhere's top line displays two 10-segment horizontal bar graphs.



One is labeled "SAT," and shows the satellite signal strength. The other is labeled "TER," and indicates the strength of the terrestrial (ground-based) Sirius signal. The terrestrial Sirius signal is only present in cities.

Moving the antenna location may adjust the bar graph signal strength indications and insure optimum reception. Pressing the Control Knob, the menu button, or the remote Select button returns to the top level Menu Options.

Note: Most Menu screens automatically exit after a few seconds without user input. The Antenna Aiming screen is different in that it will stay until you press the Control Knob, the menu button, or the remote Select button. This allows you to stay in this mode while you adjust the antenna location to your satisfaction.

If your Here2Everywhere has been properly connected and the antenna is receiving the SIRIUS signal (Preview Channel #184) you will hear audio. If you do not hear audio, the display will read "Acquiring Signal." If you have not activated your SIRIUS satellite radio, call 888-539-SIRIUS to subscribe. Refer to your Here2Everywhere Instruction Manual for details on operating your Here2Everywhere SIRIUS tuner.

Audio output (560 ohms) 776mV RMS
 Power supply requirements 9 ~ 16V, negative ground
 Dimensions 110mm(L) x 74mm(W) x 30mm(D)

KENWOOD

www.kenwoodusa.com
 www.kenwoodusa.com/inquiry
 1-800-KENWOOD

Main Office
 P.O. Box 22745
 Long Beach, CA 90801-5745

Canada Office
 6070 Kestrel Road
 Mississauga, Ontario L5T 1S8

Hawaii Office
 Kenwood USA Corporation
 P.O. Box 903
 Pearl City, HI 96782

©2004 Kenwood USA Corporation. All Rights Reserved.

Free Manuals Download Website

<http://myh66.com>

<http://usermanuals.us>

<http://www.somanuals.com>

<http://www.4manuals.cc>

<http://www.manual-lib.com>

<http://www.404manual.com>

<http://www.luxmanual.com>

<http://aubethermostatmanual.com>

Golf course search by state

<http://golfingnear.com>

Email search by domain

<http://emailbydomain.com>

Auto manuals search

<http://auto.somanuals.com>

TV manuals search

<http://tv.somanuals.com>