

KENWOOD

TM-V7E(BL)

FM DUAL BANDER



Experience high-performance mobile communications with exquisite ease of operation: Kenwood's distinctive TM-V7E(BL) FM dual bander (144MHz/430MHz).

Mobile Contact: Crystal-Clear Co



Dual-mode reversible LCD

The blue LCD panel, which displays dot-matrix characters – can be switched between positive and negative display modes to ensure optimum visibility in all conditions. Also, the large control panel (51.5 x 105 mm) features four multifunction keys – with key function display – for improved operating ease.



“Five-in-one” programmable memory

The TM-V7E(BL) has a multiple “personality” to suit different conditions. Its programmable memory can store five entire operating profiles, ready for instant recall at the push of a button. Each profile includes such settings as positive/negative display mode, dimmer level, frequency range, and memory mode.

Dual receive on same band (f²)

In addition to simultaneous receive on VHF and UHF bands, the TM-V7E(BL) can receive two frequencies on the same band. Monoband use is also possible.

Up to 280 multi-function memory channels

There's capacity as well as versatility: up to 280 memory channels for storing important data – transmit and receive frequencies (independently), frequency step, tone frequency, etc. (180 channels when using Memory Name function)

Memory Name function

For greater convenience, you can choose to identify each channel with up to 7 alphanumeric characters. In this mode, the number of memory channels available is 180.

Multi-scan functions

Full band and program band scans, memory scan with memory channel lock-out, MHz scan and call scan are all available. For each band there are TO (time-operated) and CO (carrier-operated) scan stop modes.

Visual scan with pause



Visual scan display

By automatically checking above and below the frequency currently in use, and graphing the results on the LCD (147 channels max.), this new feature is

convenient for searching out open channels.

DTSS selective calling with page function

Built-in DTSS (Dual-Tone Squelch System) allows DTMF access: the squelch is opened only when a specific 3-digit code has been received. The page function alerts you to incoming calls and opens the squelch if the receiver has been programmed to accept a DTMF tone group. And even during normal reception (squelch open), the TM-V7E can be on the alert for a pre-determined code.

Built-in CTCSS encoder/decoder

The CTCSS (Continuous Tone Coded Squelch System) encoder/decoder enables operation of the 38 EIA-standard CTCSS subtone frequencies.

Auto simplex checker

ASC will automatically check whether it is possible to switch from a repeater to simplex communications.

Advanced Intercept Point

You can choose either high sensitivity for simplex/weak-signal work, or a high intercept point – using Kenwood's own AIP circuitry – to minimize intermod or adjacent channel interference.

Communications Anytime, Anywhere

Kenwood's TM-V7E(BL) FM dual-band (144MHz/430MHz) transceiver is packed with powerful on-board features that give it the edge in today's mobile communications. Take, for instance, the "five-in-one" programmable memory, DTSS and pager functions, 280 memory channels, and the ability to receive two frequencies on the same band. Yet at the same time it offers superb ease of operation, with its user-friendly controls, large LCD and guide function. Outside and in, the TM-V7E(BL) exemplifies the designed-in quality and attention to detail for which Kenwood is famous.



TM-V7E(BL)

6-pin mini DIN connector for 1200/9600bps packet

The front panel features a connector for hooking up to a TNC, enabling either standard 1200bps or 9600bps high-speed packet communications. And for extra convenience, the TM-V7E(BL) lets you set up separate bands for voice and data.

Quick-release detachable front panel kit (option)

To enhance security, simply remove the compact front panel whenever the car is left unattended. If the optional quick-release kit is used, the panel can be mounted virtually anywhere since the microphone cable connects directly to the main unit.



Guide function

There's no need to carry the manual with you – the friendly guide function displays operating instructions at the touch of a button.

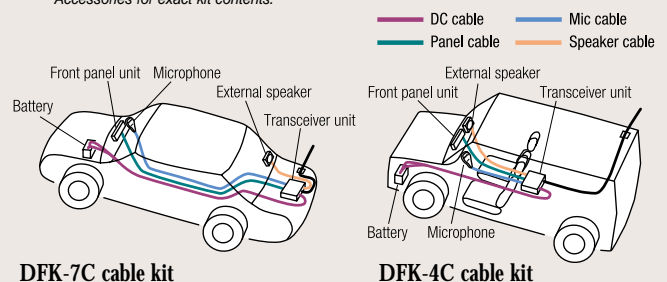
```
UFO Scan: [UFO] (1s)
MHz Scan: [UFO] (1s) → [MHz]
Memory Scan: [MR] (1s)
Call Scan: [CALL] (1s)
```

- Automatic band change
- Selectable frequency step (5, 6.25, 10, 12.5, 15, 20, 25 or 50kHz)
- Transceiver control function
- Voice synthesizer (requires VS-3 option)
- Incremental MHz key ■ S-meter squelch
- Time-out timer ■ Audible frequency identification
- Auto repeater offset (144MHz) ■ Separate speaker terminals for each band (switchable)
- Power-on message ■ Contrast adjustment
- Dimmer control ■ Auto power-off circuit
- Heavy-duty construction ■ Optional MC-53DM multi-function backlit mic with DTMF

Quick-release front panel installations

The typical installations illustrated here demonstrate just two of the many ways in which detachable front panel kits may be used with the TM-V7A(BL). For a minivan, the main unit can be installed out of the way under a front seat. In the case of a passenger car, it can be installed in the trunk. The choice of cable lengths ensures full versatility to suit a wide variety of vehicles.

Note: Not all kits are sold as shown; see Optional Accessories for exact kit contents.



Optional Accessories

MC-80
Stand Microphone
(requires MJ-88)



RC-V7
Control Panel



MC-60A
Deluxe Desktop
Microphone
(requires MJ-88)



PG-5A
Data Cable



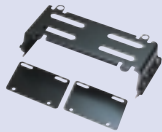
MC-53DM
Multi-function
Backlit Microphone
with DTMF



PS-33
Power Supply



MB-201*
Mobile Mount
*There are certain
restrictions
on installation.



MC-58DM
Hand Microphone
with DTMF



MJ-88
Microphone
Plug Adapter
(modular to 8-pin)



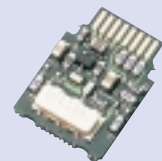
SP-50B
Mobile Speaker



DFK-7C
Quick-Release Detachable Front Panel Kit
(includes quick-release panel, panel
mount & cushion, 23.0ft/7m panel cable,
23.0ft/7m microphone cable, 16.4ft/5m
speaker cable, 19.7ft/6m power cable)



VS-3
Voice Synthesizer



DFK-4C
Quick-Release Detachable Front Panel
Kit (includes quick-release panel, panel
mount & cushion, 13.1ft/4m panel
cable, 13.1ft/4m
microphone cable)



PG-3B
DC Line Noise
Filter



DFK-3C
Quick-Release Detachable Front
Panel Kit (includes quick-release
panel, panel mount
& cushion,
9.9ft/3m panel
cable)



PG-2N
Power Cable



Not all products are available in all markets.

Specifications

TM-V7E(BL)	
GENERAL	
Frequency Range	144 MHz: TX/RX: 144 ~ 146 MHz RX: 430 ~ 440 MHz 430 MHz: TX/RX: 430 ~ 440 MHz RX: 144 ~ 146 MHz
Mode	F3E (FM)
Power Requirement	13.8 V DC \pm 15% , negative ground
Current Drain (High power)	
Transmit	144 MHz: Less than 11 A 430 MHz: Less than 10 A
Receive	144 / 430 MHz: Less than 1 A
Operating Temperature Range	-20 °C ~ + 60 °C
Antenna Impedance	50 Ω
Microphone Impedance	600 Ω
Frequency Tolerance	\pm 3 ppm (14°F ~ 122°F)
Dimensions (W x H x D) [projections not included]	140 x 40 x 189 mm
Weight	1.2 kg
TRANSMITTER	
RF Output Power	
HI	144 MHz: 50 W 430 MHz: 35 W
MID (approx.)	10 W
LO (approx.)	5 W
Modulation	Reactance modulation
Maximum Frequency Deviation	Less than \pm 5 kHz
Spurious Radiation	Less than -60 dB
Modulation Distortion	Less than 3% (300 Hz ~ 3 kHz)
RECEIVER	
Circuitry	Double conversion superheterodyne
Intermediate Frequency	
1st IF	144 MHz: 38.85 MHz 430 MHz: 45.05 MHz
2nd IF	144 MHz: 450 kHz 430 MHz: 455 kHz
Sensitivity (12 dB SINAD)	144 MHz: Less than 0.16 μ V 430 MHz: Less than 0.16 μ V
Selectivity	
-6 dB	More than 12 kHz
-60 dB	Less than 28 kHz
Squelch Sensitivity	144 MHz: Less than 0.1 μ V 430 MHz: Less than 0.1 μ V
Audio Output Power	More than 2 W (8 Ω , 5% distortion)

Kenwood follows a policy of continuous advancement in development. For this reason specifications may be changed without notice.

These specifications are guaranteed for Amateur Bands only.



CE 0682

JQA-1205 ISO 9001
Communications Equipment Division
Kenwood Corporation
ISO9001 certification

KENWOOD CORPORATION

14-6, 1-chome, Dogenzaka, Shibuya-ku, Tokyo 150-8501, Japan

KENWOOD ELECTRONICS UK LIMITED

Kenwood House, Dwight Road, Watford, Herts, WD1 8EB, United Kingdom

KENWOOD ELECTRONICS DEUTSCHLAND GMBH

Rembrücker Str. 15, 63150 Heusenstamm, Germany

KENWOOD ELECTRONICS BELGIUM N.V.

Leuvensesteenweg 248 J, 1800 Vilvoorde Belgium

KENWOOD ELECTRONICS FRANCE S.A.

13 Boulevard Ney, 75018 Paris, France

KENWOOD ELECTRONICS ITALIA S.p.A.

Via G. Sirtori 7/9, 20129 Milano, Italy

KENWOOD IBÉRICA, S.A.

Bolivia, 239-08020 Barcelona, Spain

Free Manuals Download Website

<http://myh66.com>

<http://usermanuals.us>

<http://www.somanuals.com>

<http://www.4manuals.cc>

<http://www.manual-lib.com>

<http://www.404manual.com>

<http://www.luxmanual.com>

<http://aubethermostatmanual.com>

Golf course search by state

<http://golfingnear.com>

Email search by domain

<http://emailbydomain.com>

Auto manuals search

<http://auto.somanuals.com>

TV manuals search

<http://tv.somanuals.com>