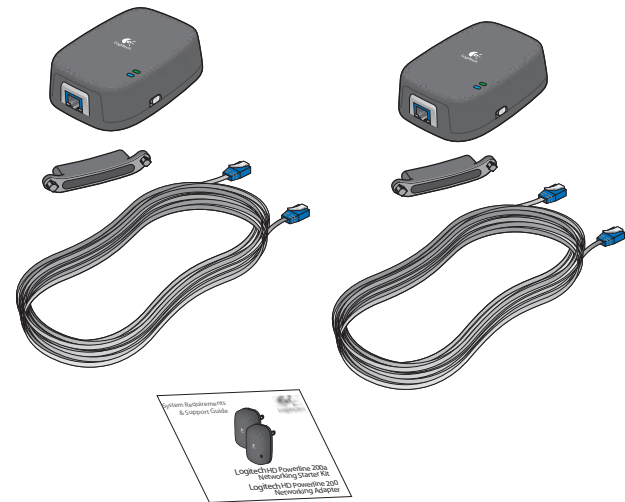




Logitech HD 200a Powerline Starter Kit



Logitech HD 200a Powerline Starter Kit



2 Network adapters
2 Ethernet cables

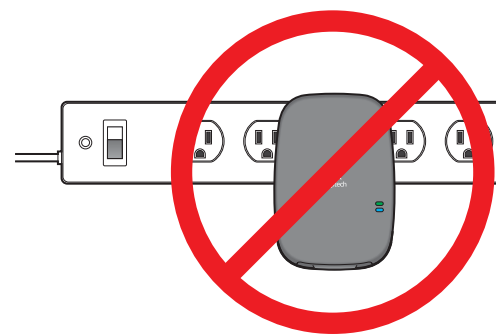
2 wall spacers
Documentation

Welcome.

Thank you for purchasing Logitech HD Powerline products. With Logitech powerline home products you can easily network devices in your home using your home's existing electrical wiring. No new wires to run, no networking hassles.

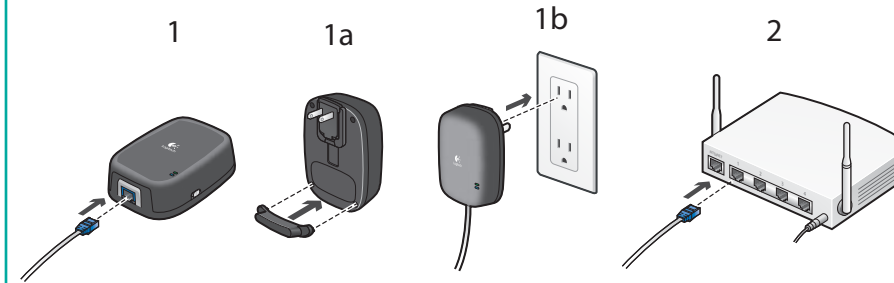
Power-strip Warning!

Do NOT plug the network adapter into a surge protector or power strip as they interfere with network communication. The network adapter(s) must be plugged directly into your wall outlet. Surge protectors are built-in to the network adapter and protect your devices.

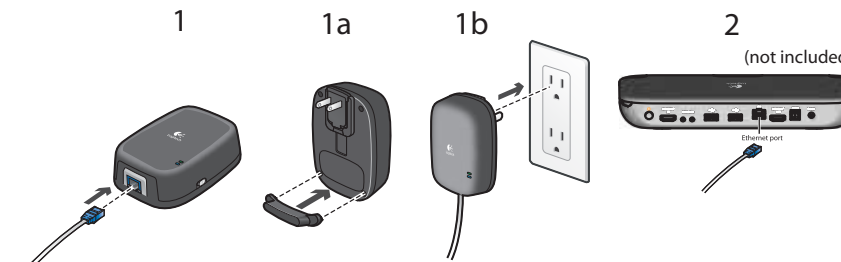


1 Logitech HD 200a Powerline Starter Kit

- 1) Plug one end of the Ethernet cable connector into the network adapter.
 - 1a) Add the optional wall spacer.
 - 1b) Plug the network adapter into the power outlet.
- 2) Connect the other end of the Ethernet cable connector into an open port on your router.



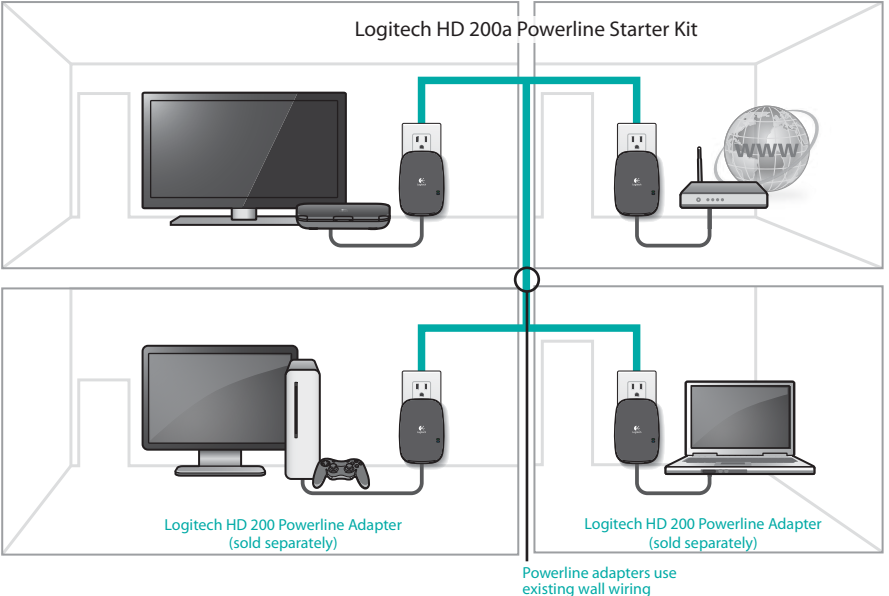
- 2) 1) Take the second network adapter and plug one end of the Ethernet cable connector into the network adapter.
 - 1a) Add the optional wall spacer.
 - 1b) Plug the second network adapter into the power outlet by the device you will be connecting to.
- 2) Connect the other end of the Ethernet cable connector into the ethernet port of your device (i.e. gaming console, laptop, etc.).



- 3) Turn the device on and test.



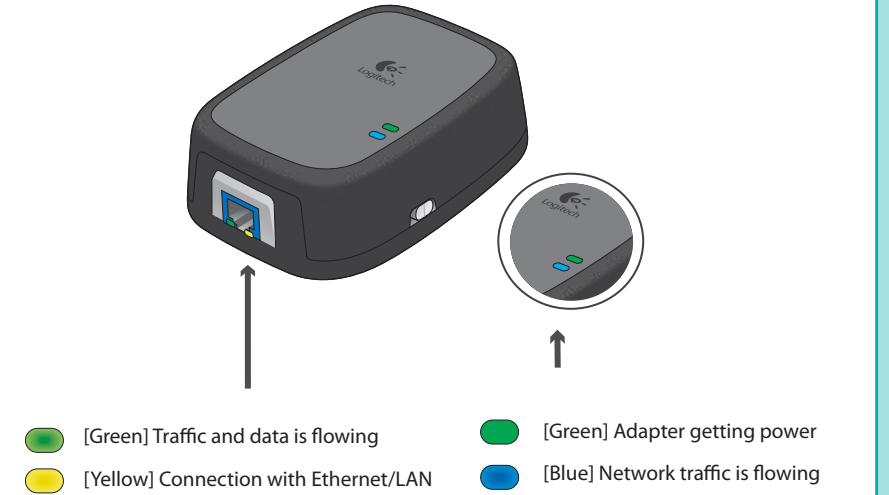
Network Floor Plan



LED Status Section

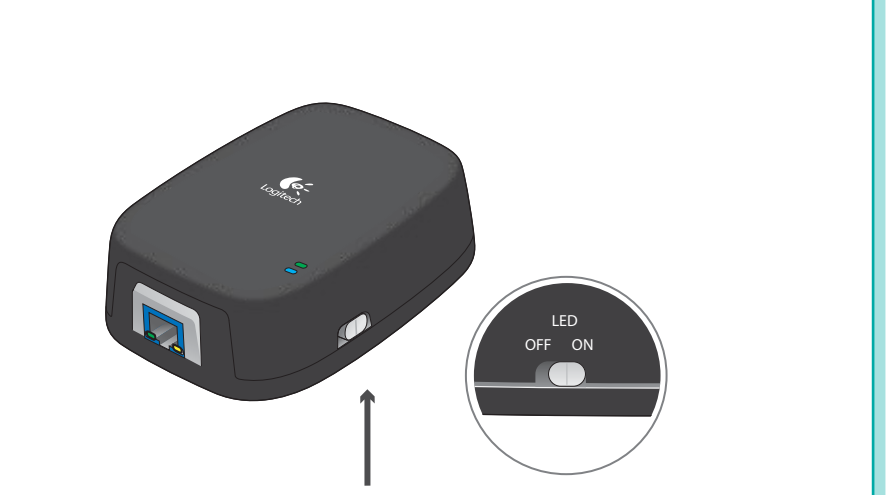
Network Adapter Diagnostic LEDs
What do these LEDs tell me?

Network Status LEDs
What do these LEDs tell me?



LED On/Off Toggle Switch

How do I turn the LEDs off?



Use the switch on the side of the network adapter to disable the diagnostic and status LEDs.

Software and advanced configuration

Logitech HD Powerline products come with 128 bit encryption to secure the powerline network. To configure your network with advanced network security, please download the Logitech Powerline Utility software at www.Logitech.com > Support > Downloads.

Customer Support

1.888.469.4543 [U.S.]

www.logitech.com

© 2010 Logitech. All rights reserved. Logitech, the Logitech logo, and other Logitech marks are owned by Logitech and may be registered. All other trademarks are the property of their respective owners. Logitech® assumes no responsibility for any errors that may appear in this manual. Information contained herein is subject to change without notice.

620-003174.003

Free Manuals Download Website

<http://myh66.com>

<http://usermanuals.us>

<http://www.somanuals.com>

<http://www.4manuals.cc>

<http://www.manual-lib.com>

<http://www.404manual.com>

<http://www.luxmanual.com>

<http://aubethermostatmanual.com>

Golf course search by state

<http://golfingnear.com>

Email search by domain

<http://emailbydomain.com>

Auto manuals search

<http://auto.somanuals.com>

TV manuals search

<http://tv.somanuals.com>