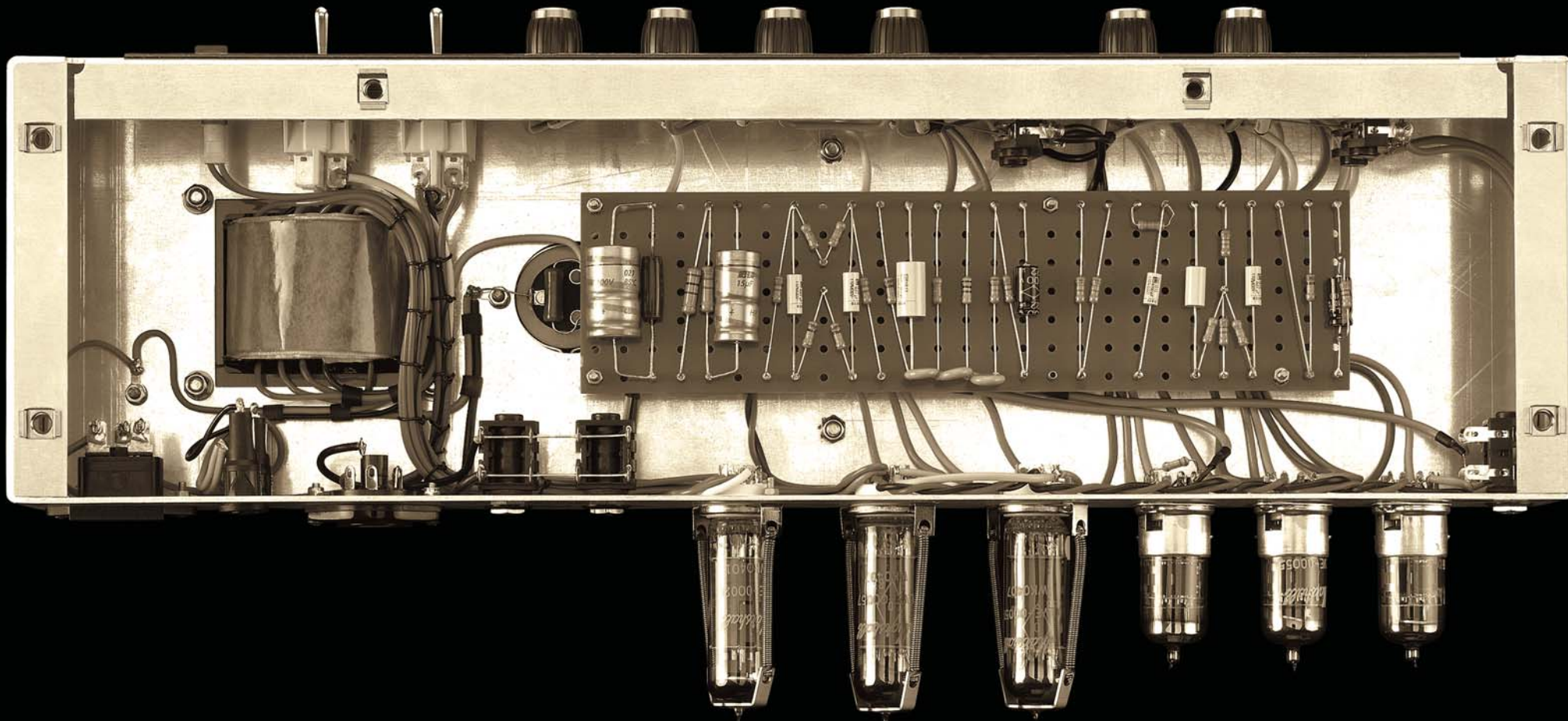


HANDWIRED

POINT-TO-POINT PERFECTION



Marshall

1974X 18 Watt Combo • 2061X 20 Watt Head • 1959HW 100 Watt Head



1959HW 100 Watt head
1960AHW/BHW 120 Watt cabinets

“When it comes to producing handwired amps with extraordinary tone, Marshall hasn’t forgotten how to do it . . .”

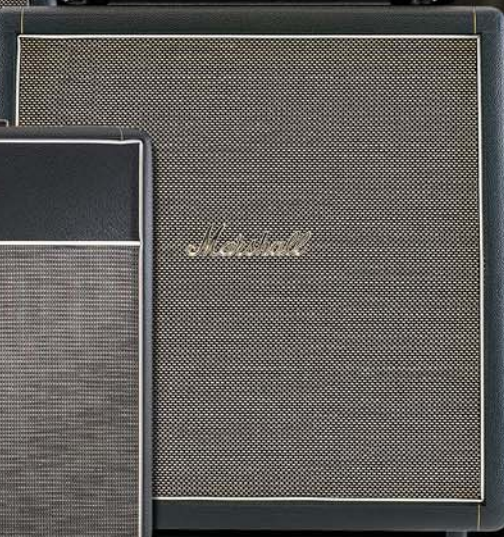
Guitarist magazine, July 2004



2061X 20 Watt head
2061CX 60 Watt cabinet



1974X 18 Watt combo



The 2061X's point-to-point handwired circuit board.

THE TIMELESS TONE of vintage handwired, all-valve Marshall amplifiers, such as the 18 Watt model 1974X 1x12" combo (1966-1968), the 20 Watt model 2061X head (1968-1973) and, of course, the legendary 'Plexi-era' (late 1965-July 1969) model 1959HW 100 Watt head, have made them highly desirable to collectors and sonic connoisseurs alike. Due to overwhelming public demand, we are proud to introduce authentic, handwired re-issues of this trio of coveted amplifiers as the first products in our Handwired Series – a series that celebrates the company's rich tonal heritage and revisits the handcrafted traditions and skills that first launched the Marshall legend.

The first seven products (two heads, one combo and four cabinets) in the Handwired Series thus far are:

1974X: Handwired re-issue of the model 1974X 18 Watt, 1x12" all-valve combo.

1974CX: Hand-soldered, 20 Watt, 1x12", extension cabinet to compliment the 1974X.

2061X: Handwired re-issue of the model 2061X 20 Watt, all-valve head.

2061CX: Hand-soldered, compact, 60 Watt, 2x12" angled cabinet that compliments the 2061X. Loaded with Celestion's critically-acclaimed G12H30 (75Hz resonance) re-issue speakers.

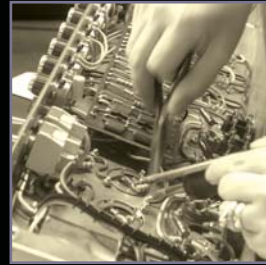
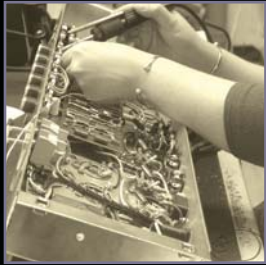
1959HW: Handwired re-issue of the 100 Watt, all-valve Super Lead 'Plexi' (a nickname derived from its Plexiglas front panel) head originally made in (pre-July) 1969.

1960AHW: Hand-soldered, 120 Watt, 16 ohm, mono 4x12" angled cabinet boasting metal handles, '100' logo, salt 'n' pepper grille cloth and loaded with aged re-issues of the lower resonance (55Hz as opposed to 75Hz) 30 Watt, Celestion G12H, complete with the original Thames Ditton label.

1960BHW: Hand-soldered, straight-fronted partner to the 1960AHW cab.

All amps boast meticulous point-to-point, handwired circuits and, in order to make these re-issues as accurate as possible, we went to incredible lengths to achieve maximum authenticity in terms of components, circuitry, constructional methods, materials, specifications, aesthetics, signal path, performance, tonal characteristics and feel. We are delighted to report that our suppliers were equally as exacting in their tasks, none more so than Dagnall Transformers and Celestion Speakers.





The output and mains transformers are vital components in an amplifier as they influence performance, sound and feel. Consequently, we worked extremely closely with Dagnall in order to duplicate the originals in all areas. To do this we painstakingly studied and analysed the constructional methods and materials used in the original devices so we could match everything as closely as possible and also ensure that the all-important electrical characteristics and performance were identical. With Dagnall's expertise and dedication, we've done exactly that.

*"In these very simple, almost organic designs, it's the valves and transformers which count and both amps are superb in this respect. Even at full tilt every detail of the guitar's character can be heard with stunning clarity."**

Each and every valve used is subjected to rigorous grading/testing procedures, and all other components are sourced from European and American manufacturers.

1974X 18Watt Combo

This eye-catching, two-channel, 18Watt, 1x12" combo houses 3 x ECC83 (aka 12AX7) valves in its preamp, an EZ81 rectifier valve and a pair of cathode-biased EL84s in its power section. One of the ECC83 trio drives the second channel's footswitchable Tremolo circuit. The 1974X's chassis is made from aluminium and its front panel is Plexiglas, exactly like the original.

A contributing factor to the coveted sound of the vintage 1974 is the way the original 20Watt, Celestion Greenback loudspeaker's tone softens with age. To recreate the gorgeously smooth sounds of a 35-year-old Greenback Celestion did two things at our request. Firstly, they revisited the 1967 recipe for the original T1221 speaker and meticulously duplicated every critical parameter. Secondly, they came up with a proprietary way of "aging" the speakers by matching the magnetic flux to that of our vintage references and specially manufacturing the cone material to be more 'pulpy', recreating the ageing effect.



*"...we were blown away by the rich depth and biting attack that exploded from the specially-aged Celestion Greenback loudspeakers of the 1974X and 1974CX extension cab."**

2061X 20Watt 'Lead & Bass 20' Head

This twin-channel, all-valve beauty houses 2 x ECC83 valves in its preamp and a pair of cathode-biased EL84s in its power stage. The 2061X is an aggressive and surprisingly modern sounding amplifier, while still possessing that unmistakable and highly desirable, vintage all-valve tone. Its gold, brushed anodized aluminium front panel and box-section, 16-gauge mild steel chassis are exactly as our original reference units. The 2x12" 2061CX cabinet compliments the 2061X head perfectly, both sonically and visually.

1959HW 100Watt 'Plexi' Head

The 1959HW is a handwired re-issue of an amazing sounding original all-valve (3 x ECC83s, 4 x EL34s), 100Watt, two-channel Super Lead 'Plexi'

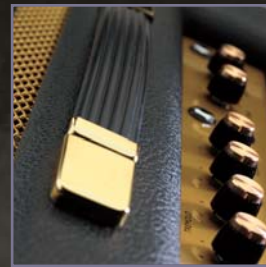
head made in 1969 (pre July). To many players and pundits, the 100 Watt 'Plexi' is the amp that defines "the sound of rock" and, to this day, is still the standard by which all others are judged. Consequently, 1959s from the so-called 'Plexi-era' are considered the Holy Grail of tone by a veritable army of voracious vintage collectors and guitar aficionados. The glorious sounds and all-important feel of the 1959HW instantly explains what all the fuss is about and is already a 'must-have' item for those obsessed with the quest for the perfect tone – especially when paired up with the 1960AHW and 1960BHW cabinets as the resulting partnership truly is a marriage made in tonal heaven!

Words are one thing but the only true way to appreciate these handsome, hand-crafted amplifiers is to see them in the flesh and, better still, experience their sonic majesty by actually playing one. Visit your Marshall dealer today and discover the joys of plugging into point-to-point perfection.

*"... it's literally plug in and turn up for some of the best vintage rock and blues sounds you'll ever hear. It's real classic Marshall stuff, with all the warmth that vintage amp lovers crave."**

*NOTE: All quotes from a 1974X/2061X review in *Guitarist* magazine, July 2004.





Amplifiers

Features	1974X	2061X	1959HW
Head	No	Yes	Yes
Combo	Yes	No	No
Output (RMS)	18 Watt	20 Watt	100 Watt
Tremelo	Yes	No	No
Speakers	G12M-20 Special	No	No
Pre-amp Valves	3 x ECC83	2 x ECC83	3 x ECC83
Power Amp Valves	2 x EL84	2 x EL84	4 x EL34
Valve Rectifier	1 x EZ81	No	No
Footswitch (supplied)	PEDL-10034	No	No
Dimensions (mm)	610 x 508 x 226	510 x 208 x 206	740 x 275 x 210
Weight (Kg)	19	10	22

Extension Cabinets

Features	1974CX	2061CX	1960AHW/BHW
Angled	No	Yes	Yes
Base	Yes	No	Yes
Speaker Type	G12M-20 Special	G12H-30 Special	G12H-30 Special
Speaker Configuration	1 x 12"	2 x 12"	4 x 12"
Power (RMS)	20 Watt	60 Watt	120 Watt
Impedance	16 Ohm	8 Ohm	16 Ohm
Dimensions (mm)	610 x 508 x 226	643 x 643 x 300	760 x 830 x 360
Weight (Kg)	14	24	36.4

To find out more about the Handwired range and other Marshall products contact:

Marshall Amplification plc Denbigh Road, Bletchley, Milton Keynes, MK1 1DQ or visit the official Marshall website: www.marshallamps.com

Whilst the information contained herein is correct at the time of publication, due to our policy of constant improvement and development, Marshall Amplification plc reserve the right to alter specifications without prior notice.

CATS-00086



Free Manuals Download Website

<http://myh66.com>

<http://usermanuals.us>

<http://www.somanuals.com>

<http://www.4manuals.cc>

<http://www.manual-lib.com>

<http://www.404manual.com>

<http://www.luxmanual.com>

<http://aubethermostatmanual.com>

Golf course search by state

<http://golfingnear.com>

Email search by domain

<http://emailbydomain.com>

Auto manuals search

<http://auto.somanuals.com>

TV manuals search

<http://tv.somanuals.com>