

REPAIR PARTS MANUAL
MODEL NO. EDITION 1
MFG. ID. NO. 96141014500
Rotary Lawn Mower



www.mcculloch.biz



532 40 96-68 12.28.06 BY

Download from Www.Somanuals.com. All Manuals Search And Download.

Printed in U.S.A.

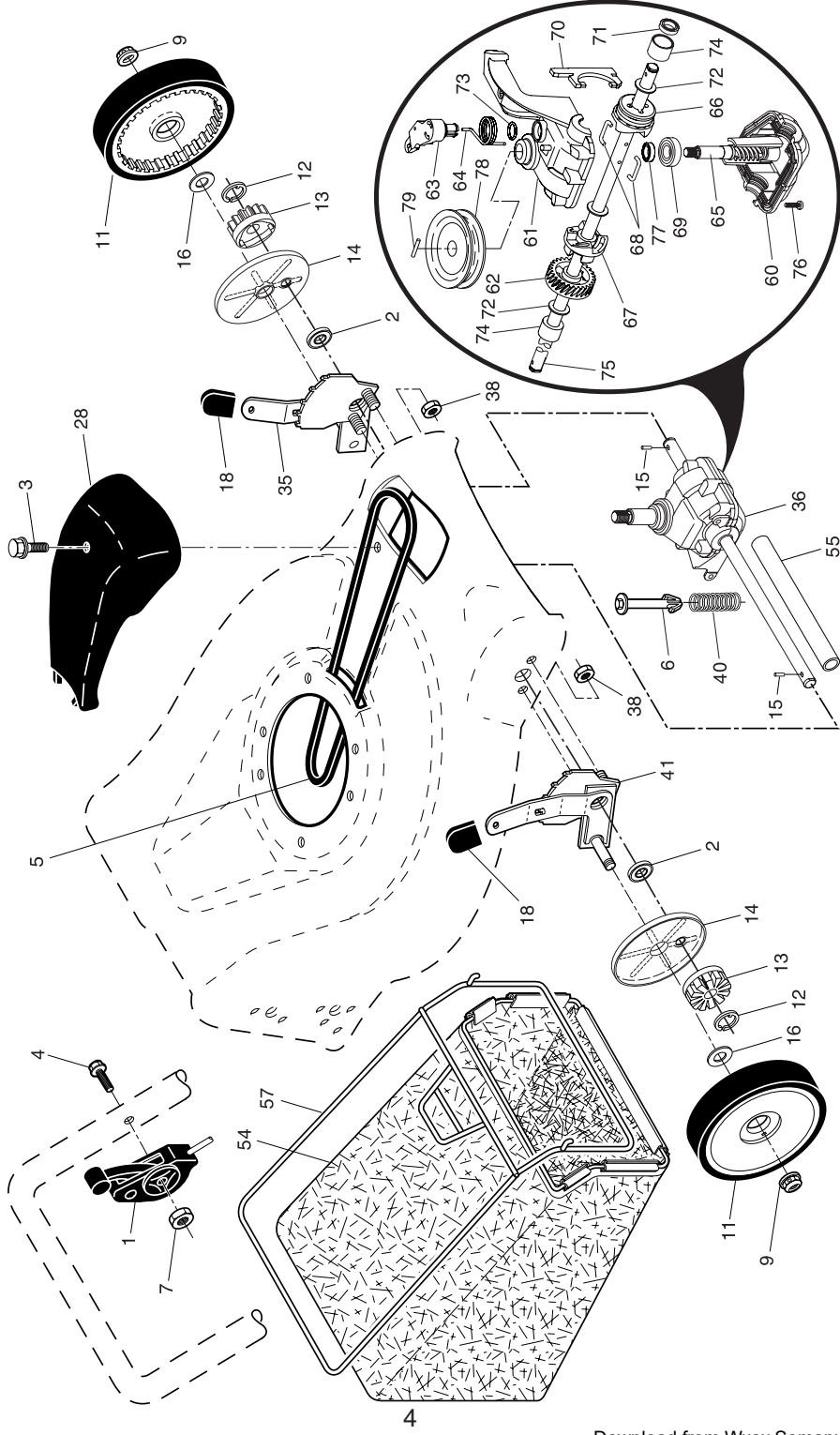
SERVICE NOTES

ROTARY LAWN MOWER -- MODEL NO. EDITION 1 (96141014500) - PRODUCT NO. 961 41 01-45

KEY NO.	PART NO.	DESCRIPTION	KEY NO.	PART NO.	DESCRIPTION
1	532 40 12-50	Upper Handle (Includes Foam Grip)	35	532 19 18-53	Hubcap
2	532 15 36-05	Lower Handle	36	532 18 41-93	Bolt
3	532 18 99-03	Control Bar	37	874 78 05-12	Thread Cutting Screw w/Sems 5/16-18 x 3/4
4	532 18 35-67	Cable, Engine Zone Control	38	819 11 22-06	Washer, Flat
5	532 19 15-74	Handle Bolt	39	873 80 05-00	Nut, Hex, Nylock 5/16-18
6	532 19 19-38	Handle Knob	40	532 19 09-39	Mounting Bracket, Debris Shield
7	532 05 17-93	Hairpin Cotter	41	532 19 23-25	Screw, Hex Washer Head
8	532 06 64-26	Wire Tie	43	532 40 58-45	Debris Shield
9	532 40 69-85	Rear Door Assembly	44	532 40 92-65	Kit, Lawn Mower Housing (Includes Key Numbers 10, 11, 12 and 45)
10	532 12 84-15	Pop Rivet	45	532 18 21-66	Danger Decal
11	532 41 05-40	Support Bracket, LH	46	532 18 46-33	Blade Adapter / Pulley
12	532 41 05-42	Support Bracket, RH	47	532 19 93-77	Blade, 21"
13	817 06 04-10	Screw 1/4-20 x 5/8	48	532 85 10-74	Hardened Washer
14	532 18 25-43	Handle Bracket Assembly, LH	49	532 85 02-63	Helical Washer 3/8-24 x 1-3/8 Grade 8
15	532 18 25-45	Handle Bracket Assembly, RH	50	532 85 10-84	Machine Screw, Hex 3/8-24 x 1-3/8 Grade 8
16	532 40 54-17	Spring, Rear Door, LH	59	532 17 50-71	Discharge Deflector
17	532 40 54-18	Spring, Rear Door, RH	60	532 17 57-35	Hinge Bracket
18	532 13 20-04	Locknut, Hex, Keys 1/4-20	61	532 19 30-00	Spring, Hinge
19	532 19 47-88	Rope Guide	62	532 17 56-50	Rod, Hinge
20	532 17 92-05	Foot Guard, C.E.	63	873 80 04-00	Nut, Hex
21	532 05 45-83	Screw, Tapping 1/4-20 x 1/2	64	532 17 50-66	Mulcher Door
24	- - -	Engine, Honda, Model Number GCV160 (Order parts from engine manufacturer)	65	532 19 74-80	O-Ring
25	532 15 04-06	Screw, Hex Head, Rolled 3/8-16 x 1-1/8	66	532 08 83-48	Washer, Flat 3/8
26	532 14 52-12	Nut, Hex, Flangelock	69	532 16 42-65	Grip, Foam
27	532 18 05-52	Wheel & Tire Assembly, Rear 14"	96	532 19 79-91	Clip, Cable
28	532 16 08-28	Shoulder Bolt 5/16-18 x .33	- -	532 18 21-34	Decal, Self-Propelled, Internal (not shown)
30	532 18 57-07	Axle Arm Assembly, Rear, RH	- -	532 40 96-72	Operator's Manual, European
31	532 19 00-69	Selector Knob	- -	532 40 96-69	Operator's Manual, Scandinavian
32	532 18 25-37	Selector Spring	- -	532 40 96-70	Operator's Manual, East Bloc
33	873 19 85-41	Locknut, Hex 1/4-20	- -	532 40 96-75	Operator's Manual, Baltic
34	532 18 57-08	Axle Arm Assembly, Rear, LH	- -	532 40 96-68	Repair Parts Manual, English

NOTE: All component dimensions given in U.S. inches. 1 inch = 25.4 mm.

IMPORTANT: Use only Original Equipment Manufacturer (O.E.M.) replacement parts. Failure to do so could be hazardous, damage your lawn mower and void your warranty.



KEY NO.	PART NO.	DESCRIPTION	KEY NO.	PART NO.	DESCRIPTION
1	532 18 45-88	Cable Assembly, Drive Control	55	532 17 57-39	Driveshaft Cover
2	532 19 10-39	Bearing, Wheel Adjuster	57	532 40 18-02	Frame, Grassbag
3	532 17 52-62	Pan Head Tapping Screw #10-24 x 2-3/4	60	532 18 34-97	Case, Lower
4	532 15 87-55	Hex Washer Head Screw 1/4-20 x 2.12	61	532 18 34-98	Case, Upper
5	532 17 54-36	V-Belt	62	532 18 34-99	Gear, 27 Teeth
6	532 15 04-95	Spring Retainer	63	532 18 35-00	Lever, Clutch
7	532 19 17-30	Nut, Hex, Flanged 1/4-20	64	532 18 35-01	Spring, Return
9	532 08 39-23	Locknut, Hex	65	532 18 35-02	Shaft, Input
11	532 18 07-75	Wheel & Tire Assembly, Front 8"	66	532 18 35-03	Dog, Movable
12	812 00 00-58	E-Ring	67	532 18 35-04	Dog, Fixed
13	532 40 38-49	Pinion	68	532 18 35-05	Wire, Formed
14	532 18 94-03	Dust Cover	69	532 18 35-06	Bearing, Ball
15	532 19 10-17	Pawl, Drive	70	532 18 35-07	Fork, Shift
16	532 06 77-25	Washer 1/2 x 1-1/2 x .134	71	532 18 35-08	Seal, Output Shaft
18	532 70 10-37	Selector Knob	72	532 18 35-09	Washer
28	532 18 14-67	Drive Cover	73	532 18 35-10	Seal, Case
35	532 40 90-97	Kit, Wheel Adjuster, LH (Includes Knob and Bearing)	74	532 18 35-11	Bushing
36	532 19 92-05	Gear Case Assembly (See Breakdown)	75	532 19 66-13	Shaft, Output
38	873 80 04-00	Locknut, Hex 1/4-20	76	532 18 35-13	Screw
40	532 13 70-90	Spring	77	532 18 35-14	Seal, Input Shaft
41	532 40 90-98	Kit, Wheel Adjuster, RH (Includes Knob and Bearing)	78	532 19 98-52	Drive Pulley
54	532 19 48-53	Grassbag Assembly	79	532 19 94-19	Pin, Retaining

NOTE: Use Dow Corning #709 to reseal Gear Case Halves.

IMPORTANT: Use only Original Equipment Manufacturer (O.E.M.) replacement parts. Failure to do so could be hazardous, damage your lawn mower and void your warranty.

NOTE: All component dimensions given in U.S. inches. 1 inch = 25.4 mm.

Free Manuals Download Website

<http://myh66.com>

<http://usermanuals.us>

<http://www.somanuals.com>

<http://www.4manuals.cc>

<http://www.manual-lib.com>

<http://www.404manual.com>

<http://www.luxmanual.com>

<http://aubethermostatmanual.com>

Golf course search by state

<http://golfingnear.com>

Email search by domain

<http://emailbydomain.com>

Auto manuals search

<http://auto.somanuals.com>

TV manuals search

<http://tv.somanuals.com>