

Operating/Service Instructions

EDGER

MODEL NO.
243-540

IMPORTANT

SAFE OPERATION PRACTICES – WALK BEHIND EDGER

TRAINING

1. Read the Operating and Service Instruction Manual carefully. Be thoroughly familiar with the controls and proper use of the equipment.
2. Never allow children to operate a power edger.
3. Keep the area of operation clear of all persons, particularly small children, and pets.

PREPARATION

1. Thoroughly inspect the area where the equipment is to be used and remove all stones, sticks, wire, bones and other foreign objects.
2. Do not operate equipment when barefoot or wearing open sandals. Always wear substantial footwear.
3. Check fuel before starting engine. Do not fill gasoline tank indoors, when engine is running, or while engine is still hot. Wipe off any spilled gasoline before starting engine.
4. Never attempt to make a wheel height adjustment while engine (motor) is running.
5. Edge only in daylight or in good artificial light.
6. Never operate equipment in wet grass. Always be sure of your footing; keep a firm hold on the handle and walk, never run.

OPERATION

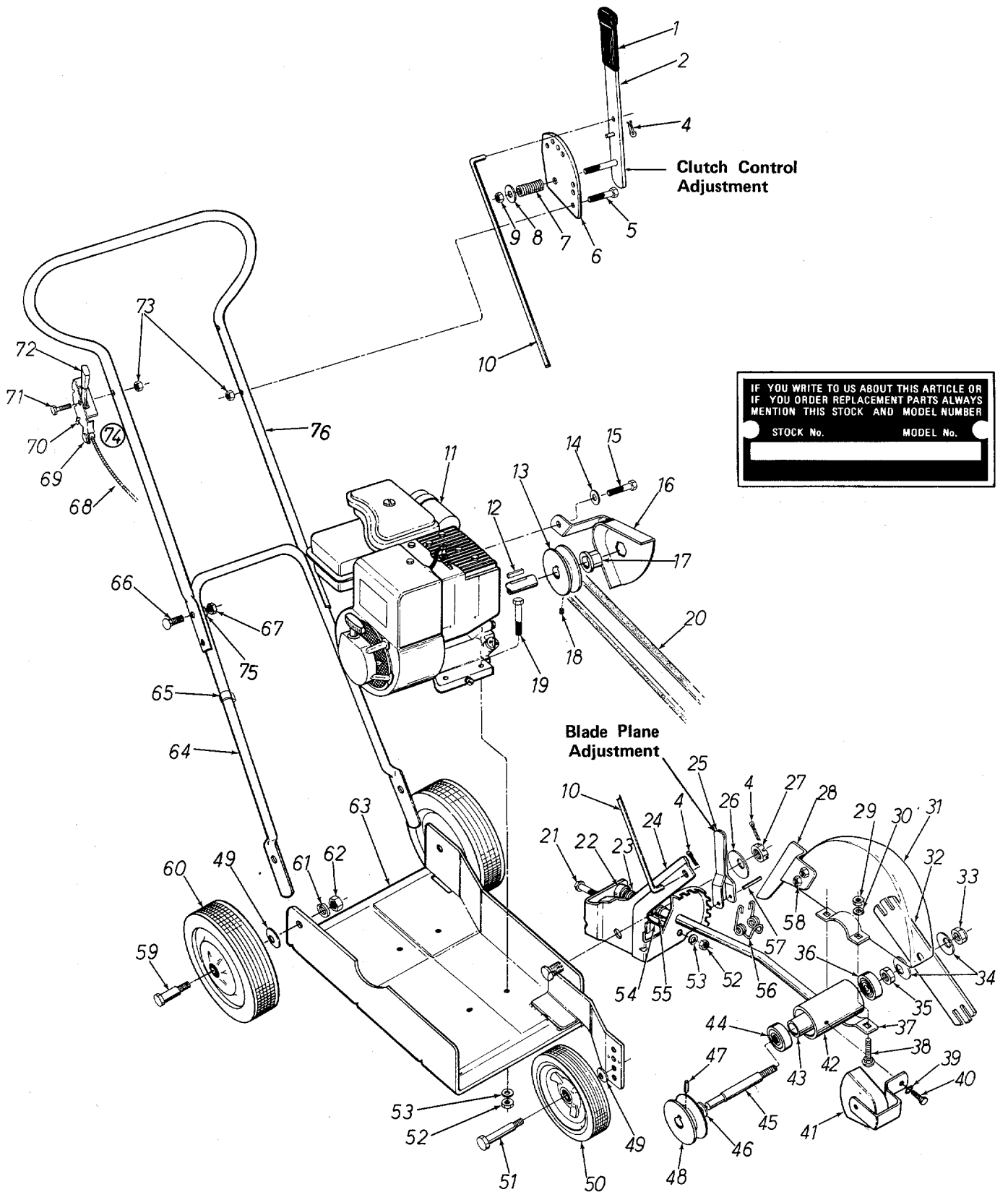
1. Do not change engine governor settings or overspeed engine.
2. Do not put hands or feet near or under rotating parts. Keep clear of discharge opening at all times.
3. Stop blade when crossing gravel drive, walks or roads.
4. After striking a foreign object, stop the engine (motor), remove wire from spark plug, thoroughly inspect the edger for any damage, and repair the damage before restarting and operating the edger.

5. If the equipment should start to vibrate abnormally, stop the engine (motor) and check immediately for the cause. Vibration is generally a warning of trouble.
6. Stop engine (motor) whenever you leave the equipment, before cleaning housing, and when making any repairs or inspections.
7. When cleaning, repairing or inspecting, make certain blade and all moving parts have stopped. Disconnect spark plug wire and keep wire away from plug to prevent accidental starting.
8. Do not run engine (motor) indoors.
9. Never operate edger without proper guards, plates or other safety protective devices in place.

MAINTENANCE AND STORAGE

1. Check blade and engine mounting bolts at frequent intervals for proper tightness.
2. Keep all nuts, bolts, and screws tight to be sure equipment is in safe working condition.
3. Never store equipment with gasoline in the tank inside of a building where fumes may reach an open flame or spark. Allow engine to cool before storing in any enclosure.
4. To reduce fire hazard keep engine free of grass, leaves or excessive grease.

243-540



IF YOU WRITE TO US ABOUT THIS ARTICLE OR
IF YOU ORDER REPLACEMENT PARTS ALWAYS
MENTION THIS STOCK AND MODEL NUMBER

STOCK No.	MODEL No.

PARTS LIST FOR 243-540 EDGER

Ref. No.	Part No.	Color Code	Description	New Part	Ref. No.	Part No.	Color Code	Description	New Part
1	720-142		Flat Bar End Grip		39	736-329		Spring Lockwasher 1/4" Scr. *	
2	9948		Clutch Handle Assembly		40	710-179		Hex F-Tapp. Scr. 1/4-20 x .50 " lg.	
3	10229		Spindle Housing Ass'y. Comp. (Incl. Ref. Nos. 36, 42, 43, 44, 45)		41	9944-463		Belt Guard Assembly	
4	714-115		Cotter Pin 1/8" Dia. x 1.00" lg. *		42	9934		Spindle Housing Ass'y.	
5	710-106		Hex Hd. Cap Scr. 1/4-20 x 1.25" lg. *		43	711-385		Spacer .690 I.D. x .810 O.D. x 2.060 lg.	
6	9950		Clutch Plate		44	741-124		Ball Bearing	
7	732-171		Compression Spring .50 O.D. x 1.40" lg.		45	711-384		Spindle	
8	736-264		Flat Washer .344" I.D. x .62" O.D.		46	736-116		Flat Washer .635 I.D. x .93 O.D.	
9	712-158		Hex Center Locknut 5/16-18 Thd.		47	715-246		Spring Pin Spirol	
10	9951		Clutch Rod					3/16" Dia. x 1.25" lg.	
11	-----		Engine		48	711-420		Sheave	
12	714-105		Sq. Key 3/16 x 1.00" lg.		49	736-105		Belleville Washer .400 I.D. x .88 O.D.	
13	711-421		Sheave		50	734-481		6 inch Wheel Assembly - front	N
14	736-114		Internal Lockwasher 1/2" Scr. *		51	738-213		Shoulder Screw .498" Dia. x 1.450	
15	710-121		Hex Hd. Cap Scr. 1/2-20 x .75" lg. Special		52	712-267		Hex Nut 5/16-18 Thd. *	
16	9941-463		Belt Guard Ass'y.		53	736-119		Spring Lockwasher 5/16" Scr. *	
17	748-227		Hex Flange Bearing .630 I.D. Bronze		54	711-386		Spacer .386 I.D. x .510 O.D. x 3.765	
18	710-137		Set Scr. 5/16-24 x .32 Cone		55	715-247		Spring Pin Spirol 3/16" Dia. x 1.00" lg.	
19	710-442		Hex Hd. Cap Scr. 5/16-18 x 1.50" lg. *		56	732-188		Torsion Spring	
20	754-142		3V Belt 31.2" lg.		57	715-101		Spring Pin Spirol 1/4" Dia. x 1.50" lg.	
21	710-402		Hex Hd. Cap Scr. 5/16-18 x 4.50" lg. *		58	712-107		Hex Center Locknut 1/4-20 Thd.	
22	711-379		Bushing		59	738-108		Shoulder Screw .498" Dia. x 1.450	
23	732-187		Compression Spring		60	734-480		7 inch Wheel Assembly - Rear	N
24	9932		Pivot Bracket Ass'y.		61	736-169		Spring Lock Washer 3/8" Scr. *	
25	9946		Lever Assembly		62	712-798		Hex Nut 3/8-16 Thd. *	
26	736-112		Belleville Washer .535 I.D. x 1.50 O.D.		63	12264-463		Base Assembly - complete	N
27	712-114		Finished Slotted Hex Nut 1/2-20 Thd.		64	749-126		Lower Handle	N
28	9952		Guide		65	746-145		Cable Clip	
29	712-267		Hex Nut 5/16-18 Thd. *		66	710-111		Carriage Bolt 1/4-20 x 1.25" lg. *	
30	736-119		Spring Lockwasher 5/16" Scr. *		67	712-287		Hex Nut 1/4-20 Thd. *	
31	9938-463		Guard Assembly		68	732-200		Conduit and Wire - Throttle Control	
32	9954		Blade		69	711-178		Pivot Bushing - Throttle Control	
33	712-200		Hex Inserted Lock Nut 1/2-20 Thd.		70	10006		Bracket Ass'y. - Throttle Control	
34	736-112		Belleville Washer .535" I.D. x 1.50" O.D.		71	710-606		Hex Hd. Cap Scr. 1/4-20 x 1.50" lg. *	
35	712-922		Hex Jam Nut 1/2-20 Thd.		72	7470		Knob - Throttle Control	
36	741-124		Ball Bearing		73	712-107		Hex Center Lock Nut 1/4-20 Thd.	
37	10244		Clamp Bracket		74	10449		Throttle Control Assembly - complete	
38	710-276		Carriage Bolt 5/16-18 x 1.00" lg. *		75	736-329		Spring Lock Washer 1/4" Scr. *	
					76	749-127		Upper Handle	N

*For faster service order standard nuts, bolts, and washers locally. If these items cannot be obtained locally, order by part number and size as shown on parts list.

(463 - Top Flite Red) - When ordering parts, if color or finish is important, use the appropriate color code shown at left. (e.g. Top Flite Red 9938 (463)).

The engine is not under warranty by the edger manufacturer. If repairs or service is needed on the engine, please contact your nearest authorized engine service outlet. Check the "Yellow Pages" of your telephone book under "Engines - Gasoline."

Find us fast in the



ASSEMBLY

Your new edger is shipped preassembled with the exception of the handle, rear, wheels, and throttle control.

1. Remove the edger and all parts from the carton. Make certain that all loose parts and literature are removed from carton before carton is discarded.
2. Assemble the lower handle into the slots in the rear of the frame. Line up the holes in the handle with the holes in the frame and insert the axle bolt through the wheel, Belleville washer, frame, handle, lockwasher and secure with hex nut as shown on the parts drawing;
3. Assemble the upper handle assembly to the lower handle with four carriage bolts, lockwashers and nuts.
4. Assemble the clutch rod to the clutch handle and pivot bracket assembly and secure with cotter pins.
5. Check the lubrication section of this manual for proper engine lubrication care.

CONTROLS

ENGINE — One lever operates the choke, regulates the engine speed and stops the engine. Ref. No. 74.

CLUTCH CONTROL ADJUSTMENT — The clutching and declutching of the belt is accompanied by moving the clutch handle. To declutch pull the handle towards you as you operate the edger. When you push the handle forward, the blade engages. To operate the clutch handle, move it to the left so the pin clears the clutch plate. Ref. No. 6.

BLADE PLANE ADJUSTMENT — The cutting blade can be adjusted from vertical to horizontal position by releasing the lever on the pivot bracket assembly and rotating the spindle housing. The notches will hold it in any position. Ref. No. 25.

WHEEL ADJUSTMENT — You can raise and lower the front wheel of your edger by unscrewing the axle bolt and using the different holes in the end of the wheel bracket on base assembly. Ref. No. 63.

By becoming familiar with all the controls and adjustments before you operate your edger, you will be able to easily adjust your edger to a variety of cutting and trimming conditions. While the engine is running, **DO NOT ATTEMPT TO MAKE ANY ADJUSTMENTS.**

STARTING INSTRUCTIONS

1. Fill the crankcase with oil. See Lubrication section of this manual.
2. Fill the gasoline tank with "regular" gasoline.
3. Move the clutch control adjustment lever back as far as it will travel and engage the pin in the clutch plate (ref. no. 6) (See photo below).
4. Set the engine control in the "start" position.
5. Grasp the starter handle and pull out the cord rapidly. Return it slowly to the engine. If the engine does not start after two pulls, move the engine control to the "fast" position.



DECLUTCH BLADE BEFORE STARTING.

LUBRICATION

ENGINE — Fill sump with oil. Use a high quality detergent oil classified "For Service MS". Nothing should be added to the recommended oil. **SUMMER**—Use SAE 30. **WINTER**—(Below 40° F.) Use SAE 5W-20 or SAE 10W.

Directions: Place the engine level. Remove filler plug. **FILL THE OIL SUMP TO POINT OF OVERFLOW.**
Pour slowly.

WHEELS — The wheels have no bearings and require no lubrication.

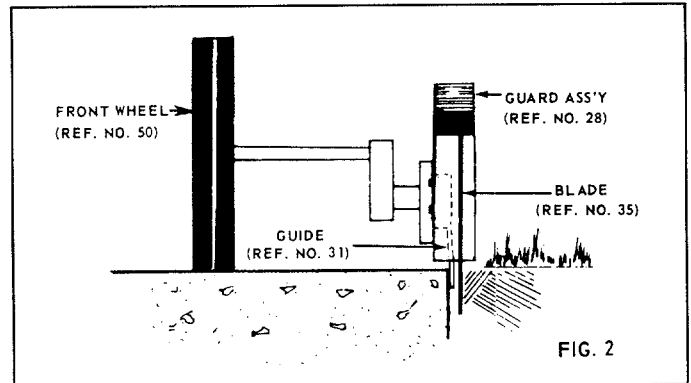
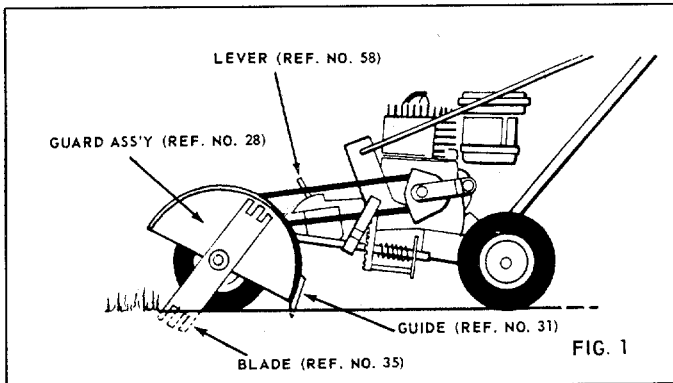
CUTTER HEAD BEARINGS — The two ball bearings in the cutter head are lubricated and sealed at the factory and require no lubrication. Lubricate all other moving parts with engine oil.

MAINTENANCE

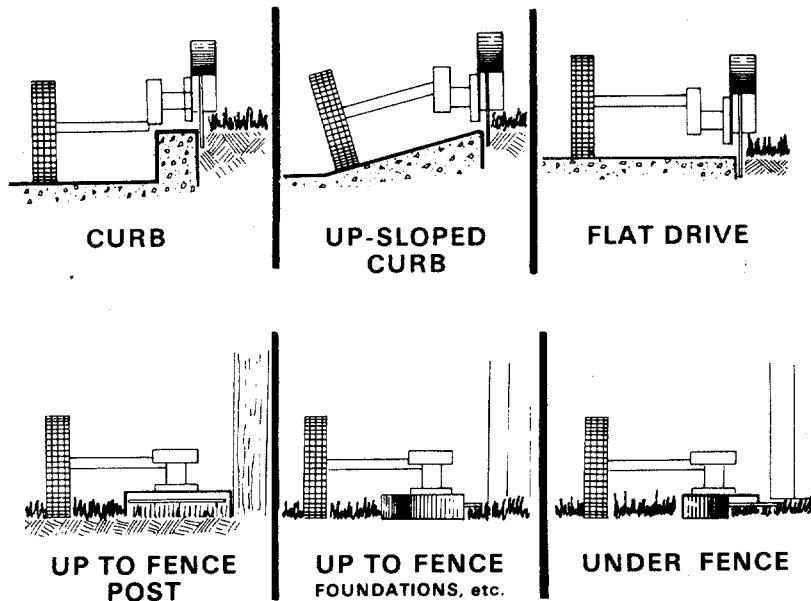
BLADE REMOVAL — Use a wrench on both sides of the blade when removing it for replacement.

BELT REMOVAL — To remove the V-Belt, remove the belt guard on the engine pulley and the belt guard on the spindle housing. Replace with a 3/8 x 31.2" V-Belt. (Part Number 754-142.)

OPERATING INSTRUCTIONS



1. Move the depth control adjustment lever down until the blade engages in the ground.
2. Be sure the guide (ref. no. 28) which is mounted on the guard ass'y. (ref. no. 31) follows in the fresh cut of the blade. (See position of guard, fig. 1).
3. Be sure guide (ref. no. 28) rides against the walk (see fig. 2) above.
4. Guard ass'y. (ref. No. 31) is adjustable horizontally. If operator is on walk as in fig. 2, pull guard ass'y. (ref. no. 31) to the right so that the inside of guide (ref. no. 28) is to the walk. If operator is on lawn, pull the guard ass'y. (ref. no. 31) to the left. This allows the outside of guide (ref. no. 28) to be towards the walk. This will protect your blade from wear and damage.
5. To operate the edger as a trimmer, rotate the cutter head 90° by adjusting the blade plane adjuster.



CAUTION

Do not adjust the blade guard with the engine running.

PARTS INFORMATION

DEFECTIVE OR MISSING PARTS must be reported to the factory immediately. Such claims must include your model number and date of purchase.

MOWER, TILLER, SNOW THROWER, TRACTOR, TRAIL BIKE, MUD BUG AND EDGER PARTS

Mower, tiller, snow thrower, tractor, trail bike, mud bug and edger parts are available through the authorized service firms listed below. All orders should specify the model number of your unit, parts numbers, description of parts and the quantity of each part required.

A 1 Engine & Mower Co.

327 East 9th Street
Salt Lake City, Utah 84102

American Electric Ignition Co.

124 N. W. 8th Street
Oklahoma City, Oklahoma 73102

Auto Electric & Carburetor Co.

2625 4th Avenue, S.
P. O. Box 1948
Birmingham, Alabama 35233

Automotive Equipment Service Co.

3117 Holmes Street
Kansas City, Missouri 64109

Bailey's Rebuild Inc.

1325 E. Madison Street
Seattle, Washington 98102

Brown Equipment Distributor Inc.

110 Beech Street
Corydon, Indiana 47112

Bullard Supply

2409 Commerce Street
Houston, Texas 77003

Catto & Putty, Inc.

P. O. Box 2408
510 Soledad Street
San Antonio, Texas 78205

Center Supply Company

6867 New Hampshire Avenue
Takoma Park, Maryland 20012

Charles B. Wright Co.

309 4th Avenue, South
Nashville, Tennessee 37201

R. T. Clapp Co.

2016 Magnolia Ave., N. E.
Knoxville Tennessee 37917

W. B. Clements

400 Salem Avenue
Roanoke, Virginia 24016

Morton B. Collins Co.

300 Birnie Avenue
Springfield, Massachusetts 01107

Dixie Sales Company

P. O. Box 1408
327 Battleground Avenue
Greensboro, North Carolina 27402

East Point Cycle & Key Shop

1617 Whiteway
East Point, Georgia 30044

Gamble Distributors

West End Avenue
Carthage, New York 13619

Garden Equipment Co., Inc.

6600 Cherry Avenue
Long Beach, California 90805

Henzler, Inc.

2015 Lemay Ferry Road
St. Louis, Missouri 63125

Frank E. Ives & Son

1101 Lincoln Avenue
Prospect Park, Pennsylvania 19076

J. W. Jewett Co.

981 Folsom Street
San Francisco, California 94107

Kenton Supply

8216 North Denver Avenue
Portland, Oregon 97217

Kimber's Inc.

115 W. Geddes St.
Syracuse, New York 13204

The Lawnmower Shop

1340 El Camino Real
San Carlos, California 94070

Marr Brothers

423 E. Jefferson
Dallas, Texas 75203

Mathews Auto Electric Co.

420 East 2nd Street
Tulsa Oklahoma 74120

McClure Lawn & Garden Supply

1114 Lexington Avenue
Mansfield, Ohio 44907

Memphis Cycle & Supply Co.

421 Monroe Avenue
Memphis Tennessee 38103

scription of parts and the quantity of each part required.

BRIGGS & STRATTON, TECUMSEH AND PEERLESS PARTS AND SERVICE

Briggs & Stratton, Tecumseh and Peerless parts and service should be handled by your nearest authorized engine service firm. Check the yellow pages of your telephone directory under the listing *Engines - Gasoline*, Briggs & Stratton or Tecumseh Lauson - Power Products.

Moz-All of Florida, Inc.

365 Greco Avenue
Coral Gables, Florida 33146

National Central, Div. of

Joe Sterling, Inc.
Drawer "D" 687 Seville Rd.
Wadsworth, Ohio 44281

Power Equipment Distributor

36463 So. Gratiot Avenue
Mt. Clemons, Michigan 48043

Parts & Sales Inc.

2101 Industrial Pkwy.
Elkhart, Indiana 46514

Parts & Sales Inc.

335 West St. Charles Road
Villa Park, Illinois 60181

Power Lawn & Garden Equip. Co.

2551-2571 J. F. Kennedy Road
Dubuque, Iowa 52001

Raub Supply Company

James & Mulberry Sts.
Lancaster, Pennsylvania 17604

Radco Distributors

2403 Market Street
P. O. Box 3216
Jacksonville, Florida 32206

Richmond Battery & Ignition

P. O. Box 25369 - 957 Myers St.
Richmond, Virginia 23260

Smith Hardware Company

515 N. George Street
Goldsboro, North Carolina 27530

South Denver Lawn Equip. Co.

527 West Evans
Denver, Colorado 80223

Suhren Engine

8330 Earhart Blvd.
New Orleans, Louisiana 70118

Sutton's Lawn Mower Shop

Route 4, Box 343
North Little Rock, Arkansas 72117

Warner Equipment

7520 Lyndale Avenue, So.
Minneapolis, Minnesota 55423

WARRANTY

For one year from date of purchase, MTD Products Inc will replace for the original purchaser, free of charge, F. O. B. factory or authorized service firm, any part or parts found to be defective in material or workmanship. All transportation charges on parts submitted for replacement under this warranty must be paid by the purchaser. This warranty does not include replacement of parts which become inoperative through misuse, excessive use, accident, neglect, improper maintenance or alterations by unauthorized persons. This warranty does not include the engine, motor, battery, battery charger or any component parts thereof. For service on these units, refer to the applicable manufacturer's warranty.

The above warranty will apply only to the original owner and will be effective only if the warranty card has been properly processed. It will not apply where the unit has been used commercially.

Warranty service is available through your local authorized service dealer or distributor. **UNDER NO CIRCUMSTANCES WILL THE RETURN OF A COMPLETE UNIT BE ACCEPTED BY THE FACTORY UNLESS PRIOR WRITTEN PERMISSION HAS BEEN EXTENDED.**

Free Manuals Download Website

<http://myh66.com>

<http://usermanuals.us>

<http://www.somanuals.com>

<http://www.4manuals.cc>

<http://www.manual-lib.com>

<http://www.404manual.com>

<http://www.luxmanual.com>

<http://aubethermostatmanual.com>

Golf course search by state

<http://golfingnear.com>

Email search by domain

<http://emailbydomain.com>

Auto manuals search

<http://auto.somanuals.com>

TV manuals search

<http://tv.somanuals.com>