



by **Schneider** Electric

OPERATION/CONFIGURATION

Endura® Camera Sabotage Behavior



C3605M-A (5/09)

Contents

Overview	4
Getting Started	4
Description	4
Camera Installation	4
Scene Selection	4
Configuration	5
Profiles	5
Uses and Benefits	5
Example of a Profile	5
Add a Profile	6
Global Settings	8
Reset Alarm, Background, and Default Settings	8
Rename a Profile	8
Save a Copy of a Profile	9
Delete a Profile	9
Operation	10
Run a Profile	10
Show or Hide Analytics	10
Stop Analytics	10
Reset Alarm	10

List of Illustrations

1	Selecting a Camera to Modify	6
2	Video Analytics Tab	6
3	Adding a Profile	6
4	Selecting a Behavior	7
5	Camera Sabotage Settings	7
6	Renaming a Profile	8
7	Renaming a Profile	9
8	Analytics Menu	10

Overview

GETTING STARTED

The Camera Sabotage behavior must be installed on the NET5301T-I intelligent video encoder before the behavior can be configured. Camera Sabotage is a standard feature of all Pelco extended platform (EP) cameras with Sarix™ technology. Refer to the product documentation for model numbers and descriptions.

NET5301T-I intelligent video encoder: Behaviors installed on the NET5301T-I are configured using the WS5000 software, version 1.5 or later. Refer to the Endura® License Manager manual for instructions on installing and managing the behaviors.

Pelco IP extended platform (EP) cameras with Sarix technology: Behaviors installed on EP cameras are configured using the WS5000 software version 2.0 or later. Depending on the model, these cameras are preloaded with one of the following Pelco analytics suites:

- **Motion Suite:** Adaptive Motion and Directional Motion behaviors
- **Object Suite:** Abandoned Object, Objecting Counting, and Object Removal behavior

NOTES:

- Pelco recommends that you set Focus to Manual when using analytics on EP cameras. If Focus is set to Auto, significant background changes will occur when the camera automatically adjusts to different points within a scene, resulting in a frequently changing image sharpness. This may cause problems with scene recognition, which will suspend the analytics operation or cause false alarms.
- The Scene Analyzer behavior installed on EP cameras is intended for future use only.

When working with profiles, refer to the following sections:

- *Add a Profile* on page 6
- *Rename a Profile* on page 8
- *Save a Copy of a Profile* on page 9
- *Delete a Profile* on page 9
- *Run a Profile* on page 10

DESCRIPTION

The Camera Sabotage behavior detects contrast changes in the field of view. An alarm is triggered if spray paint, a cloth, or a lens cap covers the lens. Any unauthorized repositioning of the camera also triggers an alarm.

CAMERA INSTALLATION

Install the camera in a high position, looking down on the scene. The field of view should be as large as possible. A small field of view could result in the view being blocked by an adjacent object.

SCENE SELECTION

Avoid scenes with a dark, uniform background; low lighting; and large moving objects.

Configuration

The Camera Sabotage behavior is configured using the WS5000 software. The behavior must be installed on the encoder before it can be configured.

PROFILES

For each behavior, you can create several custom profiles that contain different settings. Each profile can contain settings that make use of different camera settings. With these profiles, you can set up different scenarios for the behavior. Depending on the behavior, each profile might focus on a different zone, have different sensitivities, detect different object sizes, or trigger an alarm based on different types of motion. For cameras that are PTZ-enabled and are capable of storing preset positions, profiles can include different preset positions in their settings. Profiles can also be created for use with fixed cameras that do not have programmable preset positions. For these profiles, the camera position will always be the same, but the behavior settings can differ for each profile. Refer to *Global Settings* on page 8 for detailed information.

Both the encoder and the EP camera can store up to 25 profiles. Each profile, or scenario, can be started or stopped at any time.

USES AND BENEFITS

Profiles extend the flexibility and power of the behaviors. By creating more than one profile for each behavior, a behavior can be called upon to perform different analytical functions at any time. Assigning descriptive names to the profiles also enhances the usability of behaviors because they are easier to recognize and select from the shortcut menu.

EXAMPLE OF A PROFILE

A security department purchases the Camera Sabotage behavior for use on a fixed camera in a remote office location that employs a security staff during regular business hours only. The behavior is used primarily to monitor a parking lot at the remote office building during hours when the local security staff is off duty.

In this scenario, the behavior should be configured to detect when a camera is repositioned or the lens is covered with a cloth or spray paint during nonbusiness hours. The alarm should be configured to sound within a few seconds of any interference, and the alarm severity should be set to Major or Critical.

The security department creates a profile named *Remote Parking Lot Camera Interference* and configures the following settings:

Sensitivity: Since the camera monitors the parking lot of a remote office building, the alarm sensitivity is set to 7. The remote office receives only infrequent visitors after hours; therefore, the chance for false alarms is minimal given that excessive movement is unlikely.

Delay before alarm: Since the camera monitors during hours when the security department is off duty, the delay between the violation and the alarm trigger is set to 3 seconds.

Alarm severity: To ensure that alarms are not overlooked, the security department selects the "Enable alarm" check box, and then sets the alarm severity to Major. The security policy at this site requires that higher level alarms are acknowledged by security supervisors thereby minimizing the likelihood that alarms are overlooked.

Refer to *Global Settings* on page 8 for a detailed explanation of these settings. Profiles can be activated manually at the end of regular business hours.

ADD A PROFILE

Once the behavior is installed on the encoder, complete the following steps:

1. Log on to the WS5000 workstation.
2. In the Camera navigation pane, right-click a camera connected to an NET5301T-I intelligent encoder, and then select Modify Settings from the shortcut menu (refer to Figure 1). The Device setup screen appears. If necessary, click the Video Analytics tab (refer to Figure 2).

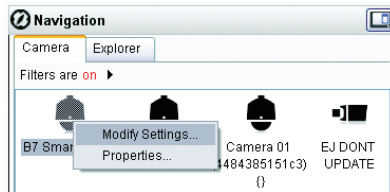


Figure 1. Selecting a Camera to Modify

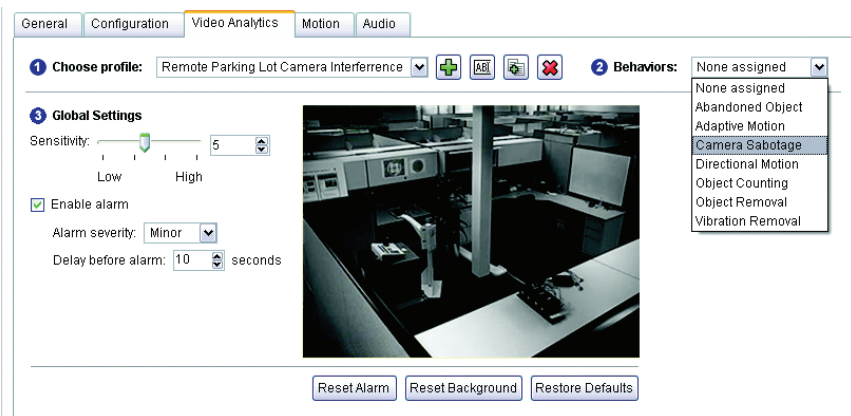


Figure 2. Video Analytics Tab


3. Click the Add Profile button  to open the Add Profile dialog box. A message appears: "This action will deactivate the current profile. Do you wish to continue?" Click Yes to continue.
NOTE: You must deactivate the currently running profile before you can set up a new profile. Profiles are configured one at a time.
4. Enter a descriptive name for the profile. Consider naming profiles based on their function. A more descriptive name makes them easier to locate when you need to run a specific profile.



Figure 3. Adding a Profile

- Click OK. The new profile name appears in the "Choose profile" list.

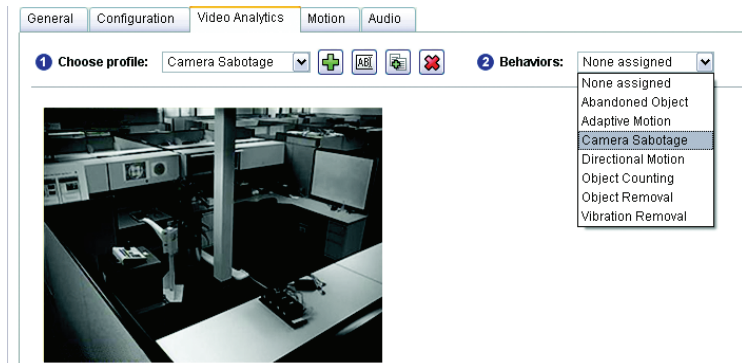


Figure 4. Selecting a Behavior

- Select Camera Sabotage from the Behaviors list (refer to Figure 4). The Global Settings area of the screen displays the required settings for this behavior.

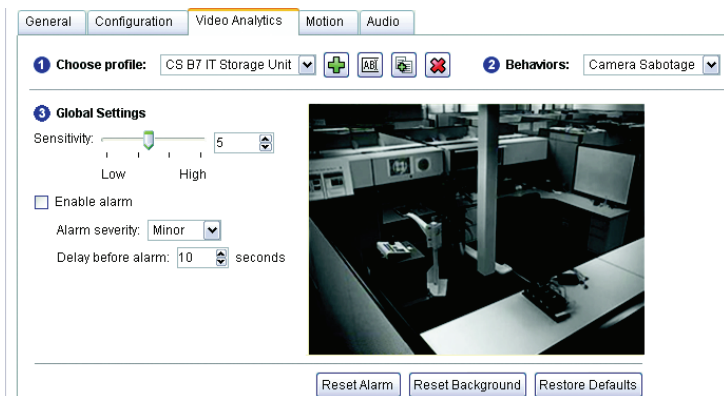


Figure 5. Camera Sabotage Settings

- Refer to *Global Settings* on page 8 to complete the setup for the new profile, and then click Apply to save the settings.
- Click OK to close the Setup screen.
- If necessary, restart any profile that was running before you set up this new profile.

GLOBAL SETTINGS

The Camera Sabotage behavior uses the following global settings:

Sensitivity: Defines the minimum motion or change in the scene that triggers an alarm. The default setting is 5; settings range from 1 (low) to 10 (high). Any movement with a value that is lower than the selected setting is regarded as noise. The higher the setting, the greater the chance for a false alarm. While a lower setting reduces the chance for a false alarm, it might also result in missed alarms.

Enable alarm: Turns on the alarm. If an alarm is enabled, alarm warnings are triggered and displayed in the Alarm Manager workspace. These events are listed in the system log.

Alarm severity: Defines the severity of an alarm. Available settings include Minor, Normal, Major and Critical. The default setting is Minor.


Delay before alarm: Defines the delay between the time a violation is detected and the actual trigger of an alarm. If the violation does not continue past the delay period, an alarm does not trigger. If the violation lasts longer than the delay period, an alarm is triggered. The default setting is 3 seconds.

RESET ALARM, BACKGROUND, AND DEFAULT SETTINGS

Profiles based on the Camera Sabotage behavior use the following additional commands:

- **Reset Alarm:** Resets an active alarm. If you reset an alarm manually while an object is still in the zone, a new alarm is triggered.
- **Reset Background:** Refreshes the background scene for the camera. Click this command any time the background scene is changed after the profile has been configured.
- **Restore Defaults:** Restores the default settings for the behavior in the profile.

RENAME A PROFILE

1. From the Device setup screen in the WS5000, display the Video Analytics tab for a camera.
2. Select a profile from the list, and then click the "Rename profile" button . The Rename Profile dialog box appears.

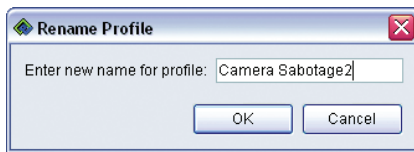



Figure 6. Renaming a Profile

3. Enter a new name for the profile, and then click OK. The new name appears in the profile list.
4. Click Apply to save your changes.
5. If necessary, restart any profile that was running before you renamed the currently selected profile.

SAVE A COPY OF A PROFILE

You can copy an existing profile to create a new profile. By copying an existing profile and modifying a few settings, you can save setup time.

1. From the Device setup screen in the WS5000, display the Video Analytics tab for a camera.
2. Select a profile from the list, and then click the “Save copy of profile” button . The “Save Copy” of Profile dialog box appears.

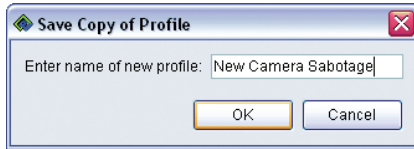



Figure 7. Renaming a Profile

3. Enter a new name for the profile, and then click OK.
4. Modify any settings for the new profile, and then click OK or Apply. Refer to *Global Settings* on page 8 for detailed descriptions of settings for this profile.
5. If necessary, restart any profile that was running before you copied this profile.

DELETE A PROFILE



Warning: Deleting a profile means that it is no longer available. Before you delete a profile, verify that it is no longer needed.

1. From the Device setup screen in the WS5000, display the Video Analytics tab for a camera.
2. Select a profile from the list, and then click the “Delete profile” button . A message appears verifying that you want to delete the profile.
3. Click Yes. The profile is deleted permanently from the system.
4. If necessary, restart any profile that was running before you deleted this profile.

Operation

RUN A PROFILE

To run the Camera Sabotage profile:

1. While viewing video on the WS5000, right-click the video pane, and then select Analytics from the shortcut menu.
2. On the Analytics submenu, locate and select the profile that you created for the Camera Sabotage behavior. A green check mark indicates that a profile is running. Starting a profile deactivates any other profile that is running; only one profile can run at a time.

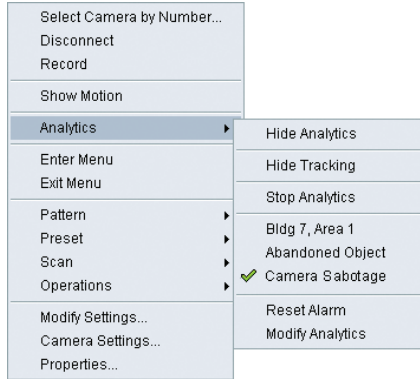


Figure 8. Analytics Menu

SHOW OR HIDE ANALYTICS

The Camera Sabotage behavior tracks and displays results in the WS5000 video pane. For example, a red box appears in the video pane each time an alarm is triggered. To show or hide the results for the behavior:

1. Right-click the video pane to display the shortcut menu.
2. Select Analytics, and then select Hide Analytics from the submenu. The results are removed from the video pane. To show these results, select Show Analytics from the submenu.

STOP ANALYTICS

To stop the currently running profile:

1. Right-click the video pane to display the shortcut menu.
2. Select Analytics, and then select Stop Analytics from the submenu. Selecting a different profile will stop the currently selected profile.

RESET ALARM

To reset an alarm manually:

1. Right-click the video pane to display the shortcut menu.
2. Select Analytics, and then select Reset Alarm from the submenu.

PRODUCT WARRANTY AND RETURN INFORMATION

WARRANTY

Pelco will repair or replace, without charge, any merchandise proved defective in material or workmanship **for a period of one year** after the date of shipment.

Exceptions to this warranty are as noted below:

- Five years:
 - Fiber optic products
 - TW3000 Series unshielded twisted pair (UTP) transmission products
 - CC3701H-Z, CC3701H-2X, CC3751H-2, CC3651H-2X, MC3651H-Z, and MC3651H-2X camera models
- Three years:
 - Pelco-branded fixed camera models (CCC1390H Series, C10DN Series, C10CH Series, IP3701H Series, and IX Series)
 - EH1500 Series enclosures
 - Spectra[®] IV products (including Spectra IV IP)
 - Camclosure[®] Series (IS, ICS, IP) integrated camera systems
 - DX Series digital video recorders, DVR5100 Series digital video recorders, Digital Sentry[®] Series hardware products, DVX Series digital video recorders, and NVR300 Series network video recorders
 - Endura[®] Series distributed network-based video products
 - Genex[®] Series products (multiplexers, server, and keyboard)
 - PMCL200/300/400 Series LCD monitors
- Two years:
 - Standard varifocal, fixed focal, and motorized zoom lenses.
 - DF5/DF8 Series fixed dome products
 - Legacy[®] Series integrated positioning systems
 - Spectra III[™], Spectra Mini, Spectra Mini IP, Esprit[®], ExSite[®], and PS20 scanners, including when used in continuous motion applications.
 - Esprit Ti and TI2500 Series thermal imaging products
 - Esprit and VVV5700 Series window wiper (excluding wiper blades).
 - CM6700/CM6800/CM9700 Series matrix
 - Digital Light Processing (DLP[®]) displays (except lamp and color wheel). The lamp and color wheel will be covered for a period of 90 days. The air filter is not covered under warranty.
 - Intelli-M[®] eIDC controllers
- One year:
 - Video cassette recorders (VCRs), except video heads. Video heads will be covered for a period of six months.
- Six months:
 - All pan and tilts, scanners, or preset lenses used in continuous motion applications (preset scan, tour, and auto scan modes).

Pelco will warrant all replacement parts and repairs for 90 days from the date of Pelco shipment. All goods requiring warranty repair shall be sent freight prepaid to a Pelco designated location. Repairs made necessary by reason of misuse, alteration, normal wear, or accident are not covered under this warranty.

Pelco assumes no risk and shall be subject to no liability for damages or loss resulting from the specific use or application made of the Products. Pelco's liability for any claim, whether based on breach of contract, negligence, infringement of any rights of any party or product liability, relating to the Products shall not exceed the price paid by the Dealer to Pelco for such Products. In no event will Pelco be liable for any special, incidental, or consequential damages (including loss of use, loss of profit, and claims of third parties) however caused, whether by the negligence of Pelco or otherwise.

The above warranty provides the Dealer with specific legal rights. The Dealer may also have additional rights, which are subject to variation from state to state.

If a warranty repair is required, the Dealer must contact Pelco at (800) 289-9100 or (559) 292-1981 to obtain a Repair Authorization number (RA), and provide the following information:

1. Model and serial number
2. Date of shipment, P.O. number, sales order number, or Pelco invoice number
3. Details of the defect or problem

If there is a dispute regarding the warranty of a product that does not fall under the warranty conditions stated above, please include a written explanation with the product when returned.

Method of return shipment shall be the same or equal to the method by which the item was received by Pelco.

RETURNS

To expedite parts returned for repair or credit, please call Pelco at (800) 289-9100 or (559) 292-1981 to obtain an authorization number (CA number if returned for credit, and RA number if returned for repair) and designated return location.

All merchandise returned for credit may be subject to a 20 percent restocking and refurbishing charge.

Goods returned for repair or credit should be clearly identified with the assigned CA or RA number and freight should be prepaid

12-23-08

REVISION HISTORY

Manual #	Date	Comments
C3605M	11/07	Original version.
C3605M-A	5/09	Added configuration information on EP cameras with Sarix technology. Also added information about focus, scene analyzer, and aspect ratio.

Pelco, the Pelco logo, Camclosure, Digital Sentry, Endura, Esprit, ExSite, Genex, Intelli-M, Legacy, and Spectra are registered trademarks of Pelco, Inc. Sarix and Spectra III are trademarks of Pelco, Inc.

DLP is a registered trademark of Texas Instruments Incorporated.

All product names and services identified throughout this document are trademarks or registered trademarks of their respective companies.

The absence of a trademark or registered trademark from this document does not constitute a waiver of intellectual property rights.

© Copyright 2009, Pelco, Inc. All rights reserved.

PELCO

by **Schneider** Electric

www.pelco.com

Pelco, Inc. Worldwide Headquarters 3500 Pelco Way Clovis, California 93612 USA
USA & Canada Tel (800) 289-9100 Fax (800) 289-9150
International Tel +1 (559) 292-1981 Fax +1 (559) 348-1120

Free Manuals Download Website

<http://myh66.com>

<http://usermanuals.us>

<http://www.somanuals.com>

<http://www.4manuals.cc>

<http://www.manual-lib.com>

<http://www.404manual.com>

<http://www.luxmanual.com>

<http://aubethermostatmanual.com>

Golf course search by state

<http://golfingnear.com>

Email search by domain

<http://emailbydomain.com>

Auto manuals search

<http://auto.somanuals.com>

TV manuals search

<http://tv.somanuals.com>