

**PMC901-X
9-Inch Color
Video Monitor**

**Installation/
Operation Manual**

C1911M (4/98)

Pelco • 3500 Pelco Way • Clovis, CA 93612-5699 USA • www.pelco.com
In North America and Canada: Tel (800) 289-9100 or FAX (800) 289-9150
International Customers: Tel (1-559) 292-1981 or FAX (1-559) 348-1120

CONTENTS

<u>Section</u>	<u>Page</u>
1.0 GENERAL	3
1.1 IMPORTANT SAFEGUARDS AND WARNINGS	3
1.2 REGULATORY NOTICES	5
1.3 UNPACKING INSTRUCTIONS	5
2.0 DESCRIPTION	6
2.1 MODEL	6
2.2 CERTIFICATIONS	6
3.0 INSTALLATION	7
3.1 MOUNTING	7
3.2 CONNECTIONS	7
4.0 OPERATION	9
5.0 MAINTENANCE	10
6.0 SPECIFICATIONS	11
7.0 WARRANTY AND RETURN INFORMATION	12

LIST OF ILLUSTRATIONS

<u>Figure</u>	<u>Page</u>
1 Monitor Connections	8
2 Front Panel Controls	9

LIST OF TABLES

<u>Table</u>	<u>Page</u>
A Video Coaxial Cable Wiring Distances	7

REVISION HISTORY

<u>Manual #</u>	<u>Date</u>	<u>Comments</u>
C1911M	4/98	Original version

1.1 IMPORTANT SAFEGUARDS AND WARNINGS

Please thoroughly familiarize yourself with the information in this manual prior to installation and operation.

Read Instructions

Safety and operating instructions should be read before the monitor is operated.

Retain Instructions

Safety and operating instructions should be retained for future reference.

Heed Warnings

All warnings on the monitor and in the operating instructions should be followed.

Follow Instructions

All operating and use instructions should be followed.

Cleaning

Do not use liquid cleaners or aerosol cleaners. Use a damp cloth for cleaning.

Attachments

Use only attachments recommended by Pelco.

Water and Moisture

Do not use this monitor near water - for example, near a kitchen sink, in a wet basement or near a swimming pool - unless the monitor is specifically marked "For Use in Wet Locations."

Accessories

Do not place this monitor on an unstable cart, stand, table, or mount. The monitor may fall, causing serious injury to a child or adult and serious damage to the monitor. Use only with a mount recommended by Pelco. When mounting the monitor, follow Pelco's installation instructions, and use only mounting accessories recommended by Pelco.

Cart & Stand

A monitor and cart combination should be moved with care. Quick stops, excessive force, and uneven surfaces may cause the monitor and cart combination to overturn.

Ventilation

Slots and openings in the cabinet are provided for ventilation to ensure reliable operation of the monitor and to protect it from overheating. These openings must not be blocked or covered. The openings should never be blocked by placing the monitor on furniture, carpet, or similar surfaces. The monitor should never be placed near or over radiators or heat registers. This monitor should not be placed in a built-in installation, such as a bookcase or rack, unless proper ventilation is provided.

Power Sources

This monitor should only be operated from the type of power source indicated on the back panel label. If you are not sure of the type of power to your installation location, consult your local electrical building official or power company.

Grounding

This monitor is equipped with a grounding plug. This plug will only fit into a grounding outlet. This is a safety feature. If you are unable to insert the plug into the outlet, contact your electrician to replace your obsolete outlet. Do not defeat the grounding plug since it is provided to ensure your safety.



WARNING: *This product has been evaluated for INDOOR USE ONLY unless it bears the marking "For Use in Wet Locations."*



WARNING: *To reduce the risk of electric shock hazard, do not remove the monitor cover. This monitor cannot be serviced by the user and must be sent to a qualified service person for repair.*

Power-Cord Protection

Power cords should be routed so that they are not likely to be walked on or pinched by items placed upon or against them. When routing power cords, pay attention to cords at plugs, convenience receptacles, and the point where they exit from the monitor.

Overloading

Do not connect more power plugs to one outlet than it can safely handle. This may overload wall outlets and extension cords and can result in a risk of fire or electric shock.

Object and Liquid Entry

Never push objects of any kind through openings in this monitor as they may touch dangerous voltage points or "short-out" electrical parts and could result in a fire or electric shock. Never spill liquid of any kind on the monitor.

Servicing

Do not attempt to service this monitor yourself. Opening or removing covers may expose you to dangerous voltages or other hazards. Refer all servicing to qualified service personnel.

Damage Requiring Servicing

Unplug this monitor from the wall outlet and refer servicing to qualified service personnel under the following conditions:

- a. When the power cord or plug is damaged.
- b. If liquid has been spilled or objects have fallen into the monitor.
- c. If the monitor is not marked "Suitable for Wet Locations" and it has been exposed to rain or water.
- d. If the monitor does not operate normally by following the operating instructions, adjust only those controls that are covered by the operating instructions. Improper adjustment of other controls may result in damage and may require extensive work by a qualified technician to restore the monitor to its normal operation.
- e. If the monitor has been dropped or the cabinet has been damaged.
- f. When the monitor exhibits a distinct change in performance - this indicates a need for service.

Replacement Parts

When replacement parts are required, be sure the service technician has used replacement parts specified by Pelco or have the same characteristics as the original part. Improper substitutions may result in fire, electric shock, or other hazards.

Safety Checks

Upon completion of any service or repairs to this monitor, ask your service technician to perform safety checks to determine that the monitor is in proper operating condition.

The product and/or manual may bear the following marks:

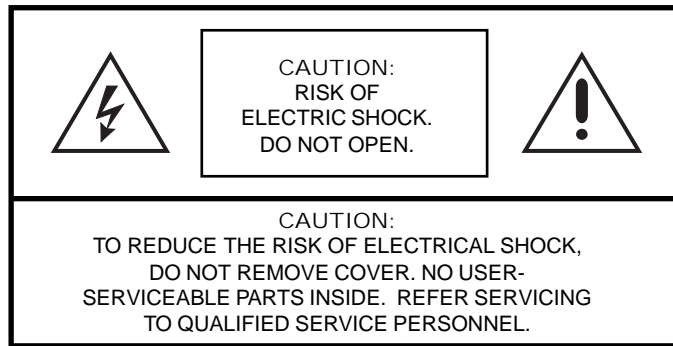


This symbol indicates that dangerous voltage constituting a risk of electric shock is present within this unit.



This symbol indicates that there are important operating and maintenance instructions in the literature accompanying this unit.

Please thoroughly familiarize yourself with the information in this manual prior to installation and operation.



1.2 REGULATORY NOTICES

NOTE: This equipment has been tested and found to comply with the limits of a Class B digital device, pursuant to part 15 of the FCC rules. These limits are designed to provide reasonable protection against harmful interference in a residential installation. This equipment generates, uses, and can radiate radio frequency energy and, if not installed and used in accordance with the instructions, may cause harmful interference to radio communications. However there is no guarantee that the interference will not occur in a particular installation. If this equipment does cause harmful interference to radio or television reception, which can be determined by turning the equipment off and on, the user is encouraged to try and correct the interference by one or more of the following measures:

- Reorient or relocate the receiving antenna.
- Increase the separation between the equipment and the receiver.
- Connect the equipment into an outlet on a circuit different from that to which the receiver is connected.
- Consult the dealer or an experienced radio/TV technician for help.

1.3 UNPACKING INSTRUCTIONS

Unpack and inspect all parts carefully.

The following items are supplied:

- 1 Monitor
- 1 Installation/Operation Manual (C1911M)

Be sure to save the shipping carton, boxes and inserts. They are the safest materials in which to make future shipments.

If an item appears to have been damaged in shipment, replace it properly in its box and contact the factory at 1-800-289-9100 or 1-559-292-1981 for a replacement. (International customers fax 1-559-348-1120 for authorization and instructions.)

If an item needs to be returned to the factory for repair, consult the **WARRANTY AND RETURN** section of this manual for instructions.

2.0 DESCRIPTION

The PMC901-X is a 9-inch (23 cm) color video monitor for specialized surveillance and industrial CCTV applications. The color monitor provides excellent picture quality and convenient control of functions. It is ideal for time-lapse and event-alarm VCR systems or color video multiplexers.

2.1 MODEL

PMC901-X Color video monitor, 9-inch (23 cm) picture display, PAL, 230 VAC.

2.2 CERTIFICATIONS

The products identified below have been tested and certified for agency compliance as noted below.

Model	Agency Compliance Certification			
	CE	FCC	UL	CSA/cUL
PMC901-X	X	X	X	X

Applicable CE, FCC, UL, and CSA/cUL directives/standards:

- 93/68/EEC—CE Mark Directive
 - 89/336/EEC, 92/31/EEC—Electromagnetic Compatibility (EMC) Directives
 - EN 55022: 1984 Class B—Radio-frequency emissions limits
 - EN 50082-1: 1992—Immunity standard
 - IEC 801-2: 1984—ESD immunity
 - IEC 801-3: 1984—Radiated field immunity
 - IEC 801-4: 1988—Electrical transients
 - 72/23/EEC—Low Voltage Directive (EMC)
 - EN 60950—Safety of ITE equipment
- FCC—47 CFR Part 15, Subpart B, Class B
- UL Listed
- CSA Class 2226 02—Audio and Video Equipment (LR 701756)—CAN/CSA-C22.2 No. 1
- CSA Class 3862 07—Information Technology Equipment (LR 101187)—CSA Std C22.2 No. 950

3.0 INSTALLATION

3.1 MOUNTING

The monitor has rubber feet and may be placed on any horizontal surface, such as a desk or table.

The monitor also may be installed in a 19-inch (48.26 cm) rack or on a wall, ceiling, or pedestal mount. Follow the instructions that accompany the rack kit or mount.

3.2 CONNECTIONS

1. Connect a video cable from the video source to the BNC connector labeled VIDEO IN on the rear panel of the monitor (refer to Figure 1). Refer to Table A for the type of video coaxial cable to use.
2. When the video signal is looped through the monitor, connect a video cable from the BNC connector labeled VIDEO OUT to the equipment which requires a video signal input (refer to Figure 1).
3. Set the termination switch on the monitor to the 75-ohm or OPEN position (refer to Figure 1).
4. Plug in the power cord.

Table A. Video Coaxial Cable Wiring Distances

Cable Type*	Maximum Distance
RG59/U	750 ft (229 m)
RG6/U	1,000 ft (305 m)
RG11/U	1,500 ft (457 m)

*Minimum cable requirements:

75 ohms

All-copper center conductor

All-copper braided shield with 95-percent braid coverage

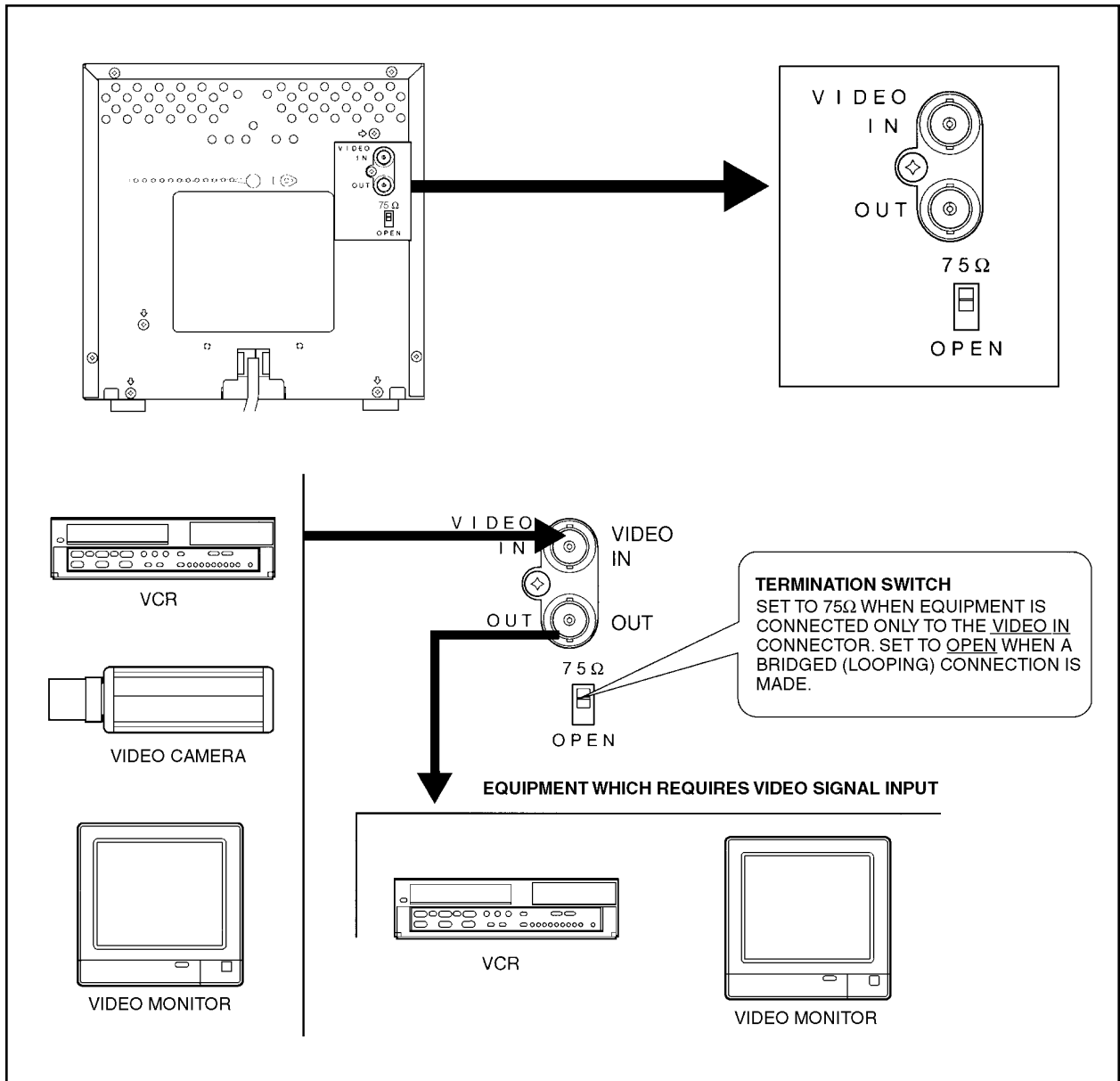


Figure 1. Monitor Connections

4.0 OPERATION

The center detent position on all front panel controls is the normal setting; a subcontrol is provided for presetting each control. The subcontrol adjustments should be adjusted by a qualified service technician only.

There are no external vertical or horizontal hold controls. The monitor contains circuitry to lock the synchronization internally.

To operate the monitor:

Refer to Figure 2 for the location of the front panel controls.

1. Turn on the POWER switch; LED indicator will light. Allow the monitor to warm up for about 30 seconds.
2. Adjust the color control to the center detent position. The monitor screen should provide a color image. If the image requires more color saturation, rotate the control clockwise. If colors appear too saturated, adjust the control counterclockwise.
3. Adjust the brightness and contrast controls to the center detent position. If dark scene areas require enhancement, the brightness control can be rotated clockwise. If the "black level," which determines the darkest portion of the picture, appears too light, rotate the brightness control counterclockwise.

NOTE: Overdrive of the white portions of the video, sufficient to cause blooming, can significantly shorten the service life of the CRT. Always adjust the brightness and contrast controls to the center detent position or towards a minimum setting to enhance monitor life expectancy.

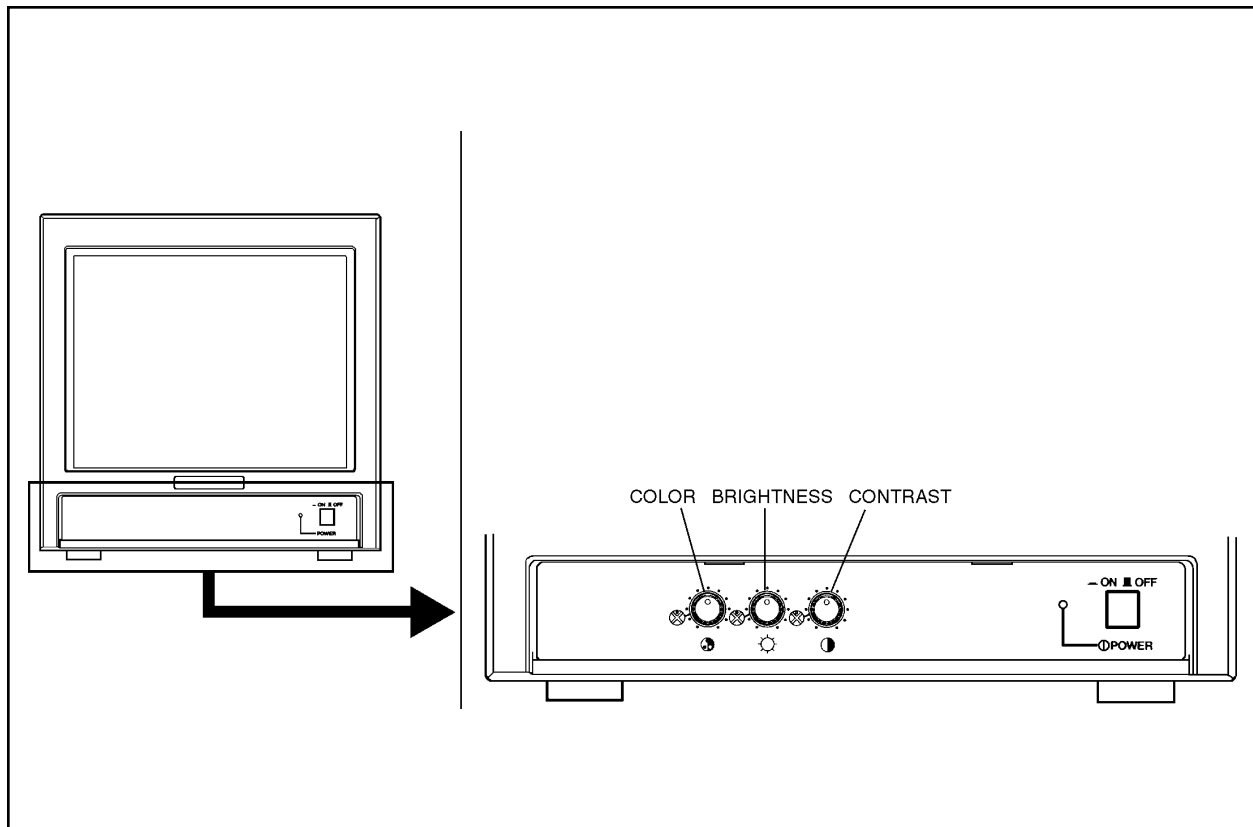


Figure 2. Front Panel Controls

5.0 MAINTENANCE

The PMC901 monitor is engineered to provide years of reliable service. Regularly scheduled maintenance is not required. Clean the outer surface of the PMC901 with a damp non-abrasive cleaning cloth. Be sure not to get any cleaner inside the PMC901 case.

This monitor contains no user-serviceable components. Maintenance, beyond the adjustments described in Section 4.0, OPERATION, should be attempted only by trained technical personnel.

6.0 SPECIFICATIONS

ELECTRICAL

Input Voltage:	230 VAC, 50 Hz
Power Consumption:	75.6 W
Color System:	PAL
General:	Automatic degaussing; fast warm-up time
Display Tube:	High resolution, 9-inch (23 cm) diagonal, 90° deflection, integral implosion protection
Viewing Diagonal:	8.9 inches (22.5 cm)
Resolution:	280 TV lines minimum, 300 TV lines typical
Linearity	
Horizontal:	Within 10%
Vertical:	Within 10%
Video Input:	1.0 Vp-p composite video, sync negative
Synchronization:	Internally derived
Controls	
Front Panel:	Brightness - rotary knob Contrast - rotary knob Color - rotary knob Power - On/off push-button switch and LED)
Service:	(Recessed, adjustable range) Subcolor Sub-brightness Subcontrast
Rear Panel:	75 ohms or OPEN (high impedance), switchable
Connectors:	Two BNC connectors (VIDEO IN and OUT)
AC Power Cord:	3-wire power cord with grounded plug; 7.4-foot (2.3 m) length

GENERAL

Construction:	Steel cabinet with plastic front				
Finish:	Black matte finish				
Temperature:	32° to 104°F (0° to 40°C)				
Humidity:	10% to 80% relative, non-condensing				
Dimensions:	8.9" H x 8.7" W x 12.5" D (22.6 cm x 22.0 cm x 31.7 cm)				
Weight:	<table><tr><td><u>Unit</u></td><td><u>Shipping</u></td></tr><tr><td>15.2 lb (6.90 kg)</td><td>17.0 lb (7.71 kg)</td></tr></table>	<u>Unit</u>	<u>Shipping</u>	15.2 lb (6.90 kg)	17.0 lb (7.71 kg)
<u>Unit</u>	<u>Shipping</u>				
15.2 lb (6.90 kg)	17.0 lb (7.71 kg)				

(Design and product specifications subject to change without notice.)

7.0 WARRANTY AND RETURN INFORMATION

WARRANTY

Pelco will repair or replace, without charge, any merchandise proved defective in material or workmanship for a period of one year after the date of shipment.

Exceptions to this warranty are as noted below:

- Five years on FT/FR8000 Series fiber optic products.
- Three years on Genex® Series products (multiplexers, server, and keyboard).
- Three years on Camclosure® and fixed camera models, except the CC3701H-2, CC3701H-2X, CC3751H-2, CC3651H-2X, MC3651H-2, and MC3651H-2X camera models, which have a five-year warranty.
- Two years on standard motorized or fixed focal length lenses.
- Two years on Legacy®, CM6700/CM6800/CM9700 Series matrix, and DF5/DF8 Series fixed dome products.
- Two years on Spectra®, Esprit®, ExSite™, and PS20 scanners, including when used in continuous motion applications.
- Two years on Esprit® and WW5700 Series window wiper (excluding wiper blades).
- Eighteen months on DX Series digital video recorders, NVR300 Series network video recorders, and Endura™ Series distributed network-based video products.
- One year (except video heads) on video cassette recorders (VCRs). Video heads will be covered for a period of six months.
- Six months on all pan and tilts, scanners or preset lenses used in continuous motion applications (that is, preset scan, tour and auto scan modes).

Pelco will warrant all replacement parts and repairs for 90 days from the date of Pelco shipment. All goods requiring warranty repair shall be sent freight prepaid to Pelco, Clovis, California. Repairs made necessary by reason of misuse, alteration, normal wear, or accident are not covered under this warranty.

Pelco assumes no risk and shall be subject to no liability for damages or loss resulting from the specific use or application made of the Products. Pelco's liability for any claim, whether based on breach of contract, negligence, infringement of any rights of any party or product liability, relating to the Products shall not exceed the price paid by the Dealer to Pelco for such Products. In no event will Pelco be liable for any special, incidental or consequential damages (including loss of use, loss of profit and claims of third parties) however caused, whether by the negligence of Pelco or otherwise.

The above warranty provides the Dealer with specific legal rights. The Dealer may also have additional rights, which are subject to variation from state to state.

If a warranty repair is required, the Dealer must contact Pelco at (800) 289-9100 or (559) 292-1981 to obtain a Repair Authorization number (RA), and provide the following information:

1. Model and serial number
2. Date of shipment, P.O. number, Sales Order number, or Pelco invoice number
3. Details of the defect or problem

If there is a dispute regarding the warranty of a product which does not fall under the warranty conditions stated above, please include a written explanation with the product when returned. Method of return shipment shall be the same or equal to the method by which the item was received by Pelco.

RETURNS

In order to expedite parts returned to the factory for repair or credit, please call the factory at (800) 289-9100 or (559) 292-1981 to obtain an authorization number (CA number if returned for credit, and RA number if returned for repair).

All merchandise returned for credit may be subject to a 20% restocking and refurbishing charge. Goods returned for repair or credit should be clearly identified with the assigned CA or RA number and freight should be prepaid. Ship to the appropriate address below.

If you are located within the continental U.S., Alaska, Hawaii or Puerto Rico, send goods to:

Service Department
Pelco
3500 Pelco Way
Clovis, CA 93612-5699

If you are located outside the continental U.S., Alaska, Hawaii or Puerto Rico and are instructed to return goods to the USA, you may do one of the following:

If the goods are to be sent by a COURIER SERVICE, send the goods to:

Pelco
3500 Pelco Way
Clovis, CA 93612-5699 USA

If the goods are to be sent by a FREIGHT FORWARDER, send the goods to:

Pelco c/o Expeditors
473 Eccles Avenue
South San Francisco, CA 94080 USA
Phone: 650-737-1700
Fax: 650-737-0933

Pelco, the Pelco logo, Camclosure, Esprit, Genex, Legacy, and Spectra are registered trademarks of Pelco.
Endura and ExSite are trademarks of Pelco.

© Copyright 1998, Pelco. All rights reserved.

Free Manuals Download Website

<http://myh66.com>

<http://usermanuals.us>

<http://www.somanuals.com>

<http://www.4manuals.cc>

<http://www.manual-lib.com>

<http://www.404manual.com>

<http://www.luxmanual.com>

<http://aubethermostatmanual.com>

Golf course search by state

<http://golfingnear.com>

Email search by domain

<http://emailbydomain.com>

Auto manuals search

<http://auto.somanuals.com>

TV manuals search

<http://tv.somanuals.com>