



# Software Guide: Basic Configuration and Operation

**C1561M-A (4/05)**

# How to Use This Software Guide

This software guide provides a step-by-step guide to configuring the VMX300(-E) server and operating the VMX300 (-E) client. Follow the steps in the table to configure the server and operate the client.

Refer to the VMX300(-E) Server Configuration Manual for complete information about configuring the server.

Refer to the VMX300(-E) Client Operation Manual for complete information about using the client software.


Note that you must install the VMX300(-E) workstation and then connect it to your system network before you can begin these configuration steps. Refer to the VMX300 Installation manual for instructions.

** IMPORTANT NOTE. PLEASE READ.**

The network implementation in step 10 of this document is shown as a general representation only and is not intended to show a detailed topology. Your actual network will differ, requiring changes or perhaps additional network equipment to accommodate the systems as illustrated. Please contact your local Pelco Representative to discuss your specific requirements.

**Table A. VMX300(-E) Configuration and Operation Steps**

Server Configuration	Step 1	Log on and configure operating system settings.
	Step 2	Start the server and register the software.
	Step 3	Launch the server's configuration mode.
	Step 4	Start VMX300(-E) device drivers.
	Step 5	Add clients to the server.
	Step 6	Configure custom windows.
	Step 7	Define a canvas for each window.
	Step 8	Add device drivers to the server configuration.
	Step 9	Add devices.
	Step 10	Define analog connections between devices.
	Step 11	Add user groups.
	Step 12	Add users.
	Step 13	Add maps.
	Step 14	Customize and automate your system.
	Step 15	Backup the server database to external media.
	Step 16	Exit configuration mode and launch server in run mode.
	Step 17	Test the configuration and evaluate the CPU workload.
Client Operation	Step 18*	Specify which servers are available to the client.
	Step 19*	Configure a workspace.
	Step 20	Start the client.
	Step 21	Work with maps.
	Step 22	Work with devices.
	Step 23	Use custom windows.
	Step 24	Use the Event Picker.
Shutdown	Step 25	Shut down the VMX300(-E) software.

** \*NOTE:** Steps 18 and 19 are completed with the VMX300(-E) client application and can be completed by an operator, but the system administrator may want to complete these steps ahead of time as part of the server configuration.

# Log On and Configure Operating System Settings

**CAUTION:** Contact your network administrator to assist you in configuring the network features of the VMX300(-E) workstation.

1. Connect the VMX300(-E) workstation power cord to the workstation power input and then to an uninterruptible power supply (UPS).
2. On the front panel of the workstation, press the power button to power on the unit.
3. The VMX300(-E) boots, and then the Microsoft® Windows® log on dialog box appears.
4. Log on to the Windows desktop with the following user name and password:

User Name: AvUser

Password: 1234

5. Click OK. The Windows XP desktop appears.
6. Configure the operating system settings, as described in the following sections.
7. Repeat steps 1-6 for each VMX300(-E) workstation in your system.

## CONFIGURE OPERATING SYSTEM SETTINGS

Before starting the VMX300(-E), you must configure the following operating system settings; instructions for the first three tasks are provided in the subsequent sections. If you are using a DX8000 Series DVR, refer to the DX8000 Installation manual for instructions on disabling the IPSec security services.

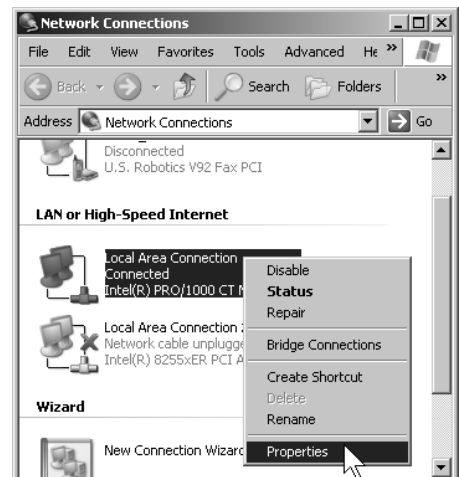
- Assign the VMX300(-E) IP address to the workstation.
- Identify the VMX300(-E) workstation on the network.
- If you are not using a DX9000 Series DVR, disable the NetBIOS service in the Windows operating system.
- If you are using a DX8000 Series DVR, disable the IPSec security services in all DX8000 Series DVR units (including any remote DX8000 Client units).

**A NOTE ON WINDOWS XPSP2 SETTINGS:** The VMX300(-E) workstation is configured with Windows XP and the XP Service Pack 2 (XPSP2). Note, however, that the XPSP2 firewall protection and automatic update features are turned off by default in the VMX300(-E) workstation. To enable these features for your VMX300(-E) system refer to the Windows XP Service Pack 2 instructions available on the Microsoft website ([www.microsoft.com](http://www.microsoft.com)).

## ASSIGN AN IP ADDRESS TO THE VMX300(-E) WORKSTATION

**CAUTION:** Each device driver and device added to the VMX300(-E) system is identified with the VMX300(-E) server IP address. Therefore, it is essential to assign the VMX300(-E) IP address before continuing with the VMX300(-E) configuration.

1. Click Start > Settings > Network Connections. The Network Connections window appears.
2. Right-click Local Area Connection, and then select Properties from the pop-up menu.
3. In the Local Area Connection Properties dialog box, double-click the Internet Protocol (TCP/IP) listing. The Internet Protocol (TCP/IP) Properties dialog box appears.



**Figure 1.** Opening the Local Area Connection Properties Dialog Box

By default, the properties are set to "Obtain an IP address automatically" and "Obtain DNS server address automatically."

4. Click "Use the following IP address," and then complete the following steps:
  - a. Enter the IP address of the VMX300(-E) workstation.
  - b. Enter the subnet mask address.
  - c. If applicable, enter the default gateway address, and the preferred and alternate DNS server addresses; otherwise, skip this step and proceed to step 5.

**NOTE:** You must assign a unique IP address to each VMX300(-E) workstation in your system.

5. Click OK to close the Internet Protocol (TCP/IP) Properties dialog box, and then click OK to close the Local Area Connection Properties dialog box.
6. Close the Network Connections window by clicking the X in the upper right-hand corner of the window.

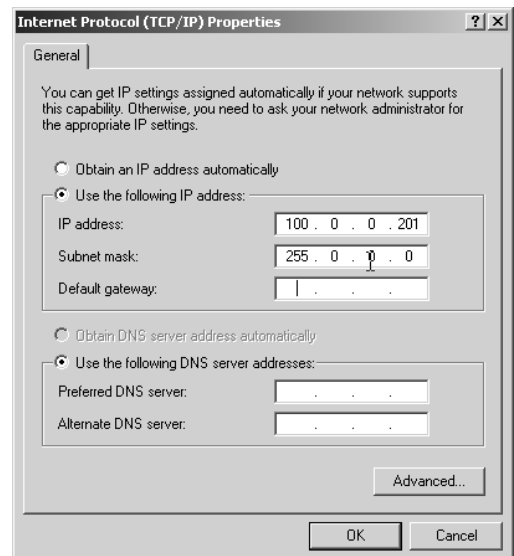


Figure 2. Internet Protocol (TCP/IP) Properties Dialog Box

## IDENTIFY THE VMX300(-E) WORKSTATION ON THE NETWORK

This procedure includes assigning a unique computer name to the VMX300(-E) workstation and then assigning the VMX300(-E) workstation to a workgroup or a domain. If these steps are not applicable in your system, skip this procedure. Note that if you are using a DX9000 Series DVR in your system, you must assign the VMX300(-E) to the appropriate DX9000 workgroup.

To identify the VMX300(-E) on the network, complete the following steps:

1. On the Windows XP desktop, right-click the My Computer icon, and then click Properties. The System Properties dialog box appears.
2. Click the Computer Name tab, and then click Change. The Computer Name Changes dialog box appears.

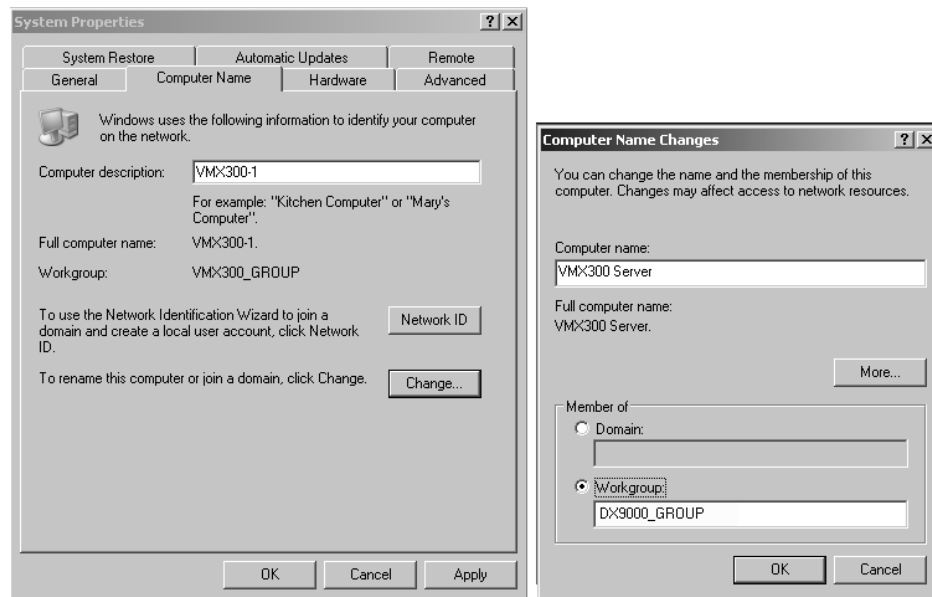


Figure 3. Identify the VMX300(-E) Workstation on the Network

3. In the "Computer name" field type the new name.

- (Optional) Assign the VMX300(-E) to be a member of a workgroup or a domain:

To assign the VMX300(-E) to a workgroup enter the workgroup name in the Workgroup field.

To assign the VMX300(-E) to a domain click Domain, and then enter the domain name. Click OK, and then enter the user name and password in the Domain Username and Password dialog box.

- Click OK. The Computer Name Changes message appears indicating that the VMX300(-E) has been assigned to the specified workgroup or domain.
- Click OK. The restart message appears.
- Click OK, close all windows, and then restart the VMX300(-E) workstation.

## DISABLE NETBIOS

A workstation running the NetBIOS service on a network can be vulnerable to attack from outside sources. If you are not using a DX9000 Series DVR, you should complete the following steps to disable the NetBIOS service in the Windows operating system. Note, however, that you should contact your network administrator before changing any NetBIOS settings.

**CAUTION:** The NetBIOS service is required for the DX9000. Do not complete this procedure if you are using a DX9000 Series DVR or if any other applications in your system require the NetBIOS service. You should follow proper security measures to limit the network's exposure to potential threats when the NetBIOS service is enabled.

To disable NetBIOS, complete the following tasks; instructions are provided in the following sections:

- Disable the NetBIOS setting in the Advanced TCP/IP Settings dialog box.
- Disable the NetBIOS Helper in the Services window.

After completing these tasks, restart the workstation.

### Disable NetBIOS in the Advanced TCP/IP Settings Dialog Box

- Click Start > Settings > Network Connections. The Network Connections window appears.
- Right-click Local Area Connection, and then select Properties from the pop-up menu.
- In the Local Area Connection Properties dialog box, double-click the Internet Protocol (TCP/IP) listing. The Internet Protocol (TCP/IP) Properties dialog box appears (refer to Figure 2).
- Click Advanced. The Advanced TCP/IP Settings dialog box appears.

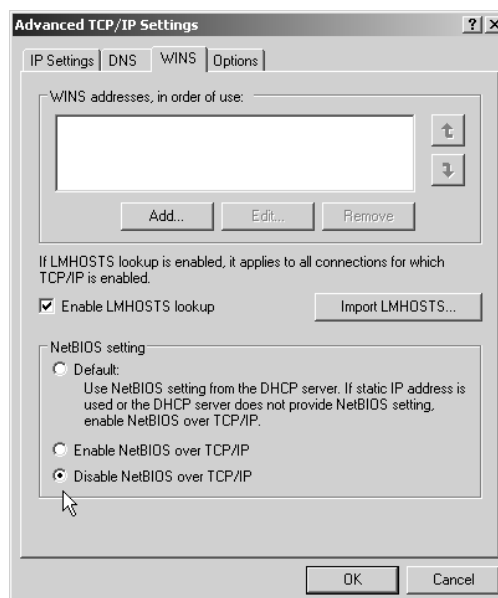
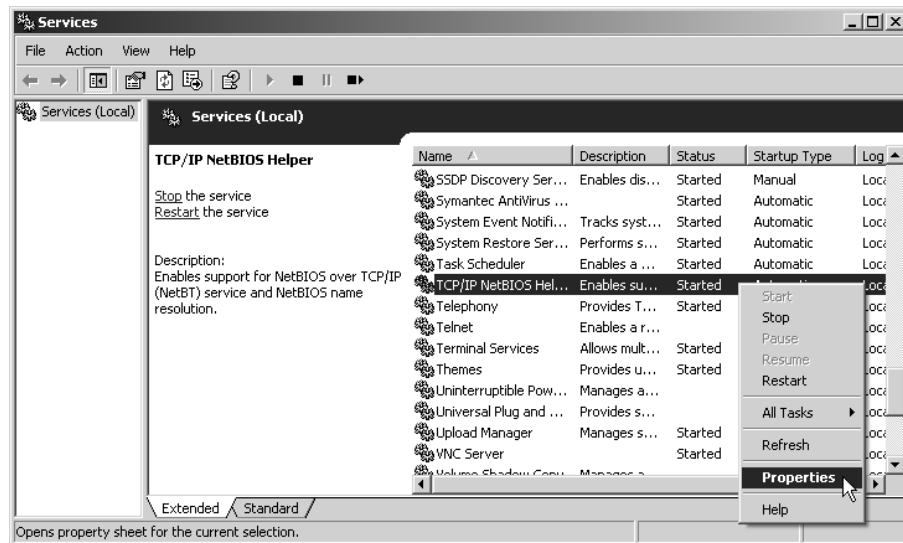


Figure 4. Advanced TCP/IP Settings Dialog Box–WINS Page

5. Click the WINS tab, and then click "Disable NetBIOS over TCP/IP."
6. Click OK.
7. Click No in any messages regarding bindings (you do not need any bindings).
8. Click Yes in any additional messages that appear, and then click OK to close the remaining open dialog boxes.
9. Continue with the steps described in the next section to disable the NetBIOS Helper service.

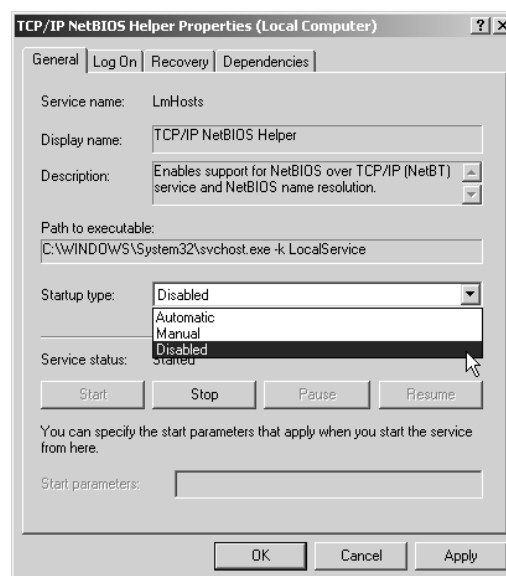
## Disable the NetBIOS Helper Service

1. Click the Windows Start button, and then select Settings > Control Panel > Administrative Tools > Services. The Services window appears.



**Figure 5.** Windows Operating System Services Window

2. Right-click the service named TCP/IP NetBIOS Helper, and then click Properties. The TCP/IP NetBIOS Helper Properties dialog box appears.



**Figure 6.** TCP/IP NetBIOS Helper Properties Dialog Box

3. Click the down arrow in the "Startup type" drop-down box, and then click Disabled.
4. Click OK, close all windows, and then restart the VMX300(-E) workstation.

step

## 2 Start VMX300(-E) Server and Register the Software

1. Click the Windows® Start button, and then choose Programs > VMX300 > VMX300 Server.
2. The Base License message prompts you to type a base license. Click Yes to open the Add License dialog box.
3. Enter your license ID in the Add License dialog box. The base license ID and any additional license IDs (each ID is a four-part number) are provided on the VMX300(-E) Licenses sheet. The hardware ID is entered by Pelco at the factory.

**i IMPORTANT:** Once you have entered your License ID, you must obtain your activation code (step 4) and then enter it (step 5) within 45 days.

4. Obtain your activation code.
  - a. Open your Internet browser and go to the VMX Series Activation page at Pelco.com. <http://www.pelco.com/vmxactivation>.
  - b. Enter your hardware ID and license ID, and then complete the remaining fields.
  - c. Click Activate. A confirmation screen appears, containing your activation code.

**OR**

Call Pelco Technical Support:  
1-800-289-9100 or  
1-559-292-1981

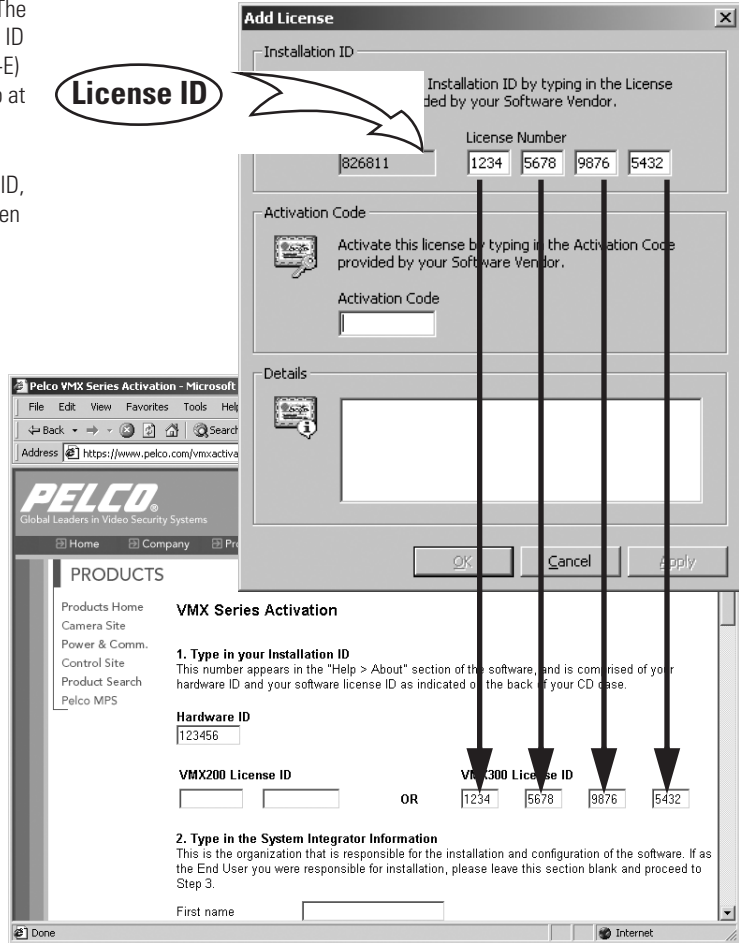


Figure 7. Adding License ID

5. Enter your activation code in the Add License dialog box.

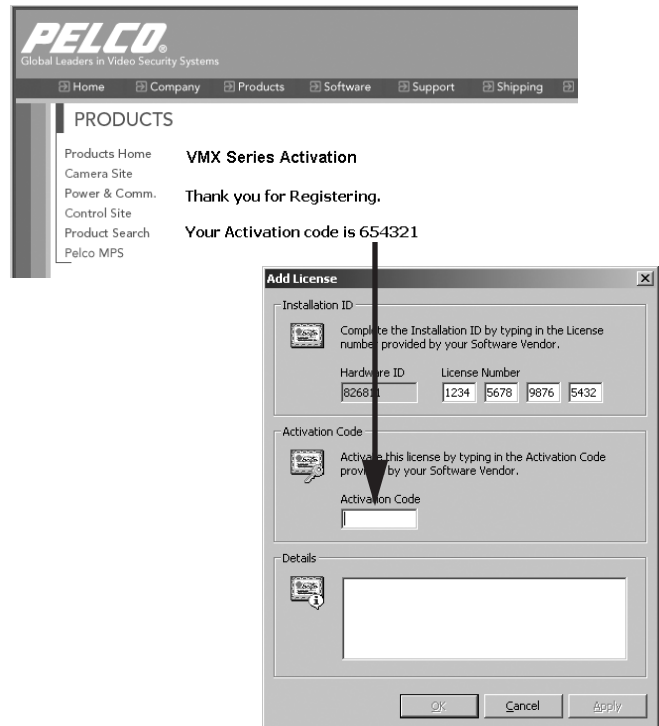


Figure 8. Adding Activation Code

6. Click Apply.

If you purchased additional license IDs, repeat steps 1-4 for each license ID.

Note that licenses are applied as follows:

VMX300 Client Application	Five licenses for each additional client (licenses for the first client application are covered by the base license)
VMX300-E Client Application	Ten licenses for each additional client (licenses for the first client application are covered by the base license)
Cameras	One license for each camera

7. Click Close.

**NOTE:** To refer to the installation ID or activation code at a later time, complete the following steps:

- Select Tools > License Manager from the menu bar. The License Manager dialog box appears.
- Click your license, and then click Properties. The License Properties dialog box appears.

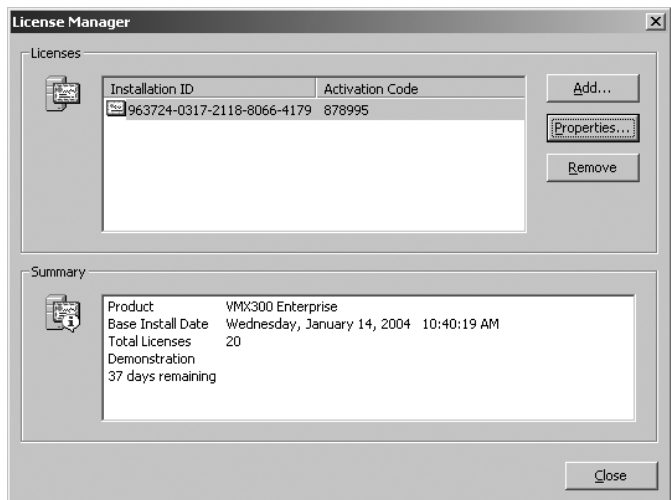


Figure 9. License Manager Dialog Box



step

# 3 Launch the Server's Configuration Mode

1. The Corrupt or Missing Database message appears because VMX300(-E) must create a new database the first time you use it. Click Create.

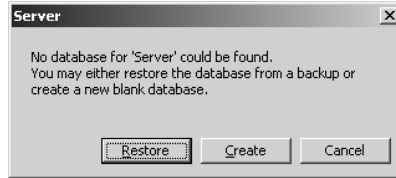


Figure 10. Corrupt or Missing Database Message

2. The VMX300(-E) start-up screen appears. Click Configure.
3. The VMX300(-E) Server Login dialog box appears. Enter the administrator user name and password:

User Name: administrator  
Password: 2899100

4. Click OK. The VMX300(-E) Configuration window appears.

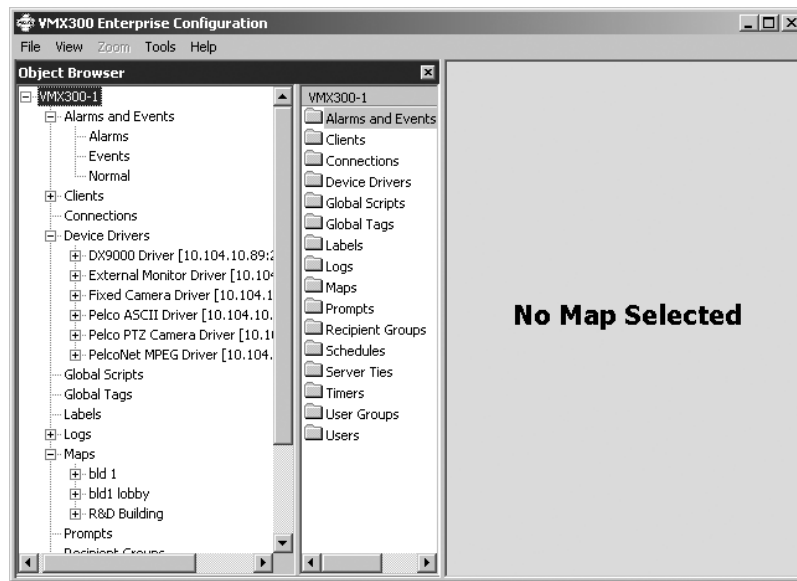
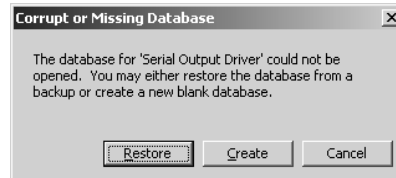


Figure 11. VMX300(-E) Configuration Window

## 4 Start VMX300(-E) Device Drivers

1. Click the Windows Start button, and then select Programs > VMX300. Select the appropriate device driver from the list of VMX300(-E) components.

The Corrupt or Missing Database message appears because VMX300(-E) must create a new driver database the first time you use the driver.



**Figure 12.** Corrupt or Missing Database Message

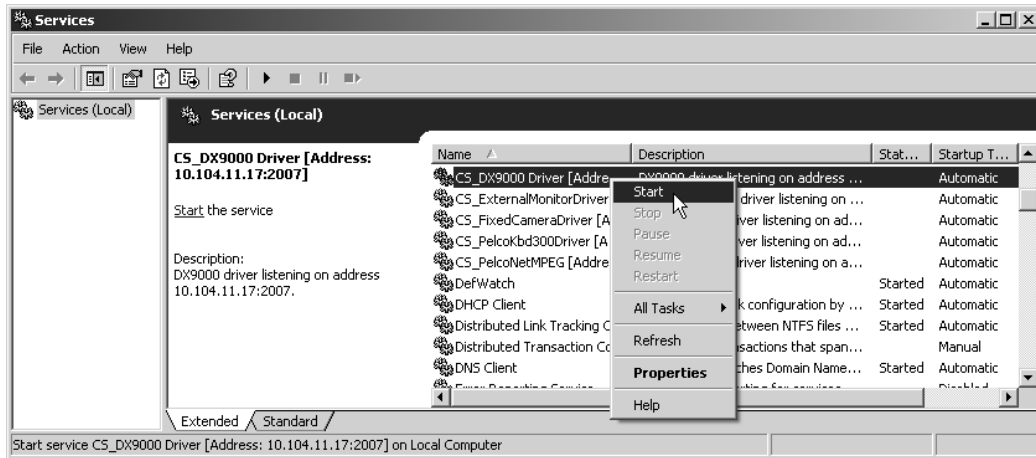
2. Click Create. The Configure Driver dialog box appears.



**Figure 13.** Sample Configure Driver Dialog Box

3. Enter a listening port number between 2,000 and 10,000, and use this port number when you add the driver to the server configuration. To run more than one driver or multiple instances of the same driver, select a different port for each instance.
4. Select the appropriate mode from the following options:
  - Start the driver as an executable:  
If the server is shut down, each driver running as an executable must be manually started when the server is launched again.
  - Install the driver as a service:  
If the server is shut down, each driver running as a service is restarted when the server is launched again.

5. Click OK. If you selected "Install the driver as a service," you must start the driver manually using either of the following methods:
  - Click the Windows Start button, and then select > Settings > Control Panel > Administrative Tools > Services. Right-click the driver, and then select Start from the pop-up menu.



**Figure 14.** The Windows Operating System Services Window

- Restart the workstation the driver is installed on.

The device driver is active when the driver icon appears in the Windows system tray.

6. Repeat steps 1-5 for each device driver necessary to control all the devices in your system.

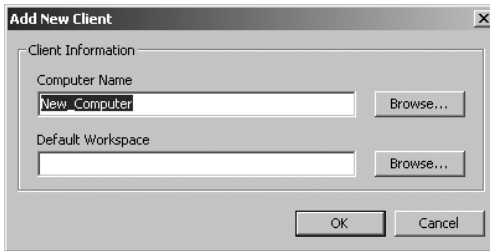
**NOTE:** Each instance of the Pelco ASCII device driver can support a single switcher and multiple cameras. If you have more than one switcher to configure, add the device driver to the server configuration once for each switcher.

## Add VMX300(-E) Clients to the Server

---

Before an operator can use the VMX300(-E) client software to view video or monitor the system, each workstation that will log in to the server must be added as a VMX300(-E) client in the server configuration. Then you must configure custom windows and canvases for each client.

1. Navigate the Object Browser tree to [project name] > Clients.
2. Double-click <Add New Client>. The Add New Client dialog box appears.



**Figure 15.** Add New Client Dialog Box

3. Type the name of the client workstation, or click Browse to select from a list of all clients visible on the network. The computer name must match the computer name listed in Start > Settings > Control Panel > System on the client workstation.
4. Optional: Once you have defined one or more workspaces in the VMX300(-E) client application, you can assign a default workspace. Refer to *Step 19, Configure a Workspace*.
5. Click OK.

# 6 Configure Custom Windows for the VMX300(-E) Clients

---

The number of custom windows that you need to configure will vary based on your specific system parameters. In general, configure as many custom windows as you want the operator using this client to view at any one time.

For example, a total of nine custom windows are required for an operator to view the following types of content at one time:

- A map (operators can view maps in custom windows as well as in the viewport)
- A web page
- Three analog video streams
- Four digital video streams

Note, however, that your specific system parameters will limit the number of digital video streams that an operator can view at any one time. Refer to Table B in *Step 7, Define a Canvas for Each VMX300(-E) Client Window* for an overview of the maximum number of streams recommended for specific digital settings.

1. Navigate the Object Browser tree to [project name] > Clients > [client name] > Windows.
2. Double-click <Add New Window>. The Add New Window dialog box appears.
3. Type a window name that is unique within the client configuration.
4. Click OK.
5. Repeat steps 1-4 to add additional windows. (Note that you can use the Copy and Paste functions to create multiple windows with the same properties; refer to the appendix of the VMX300(-E) Server Configuration Manual for instructions.)



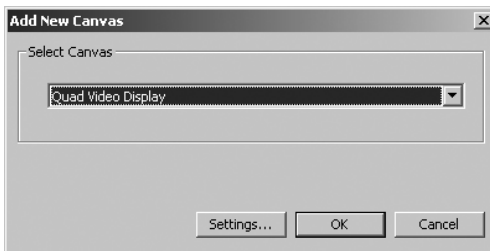
**Figure 16.** Add New Window Dialog Box

step  
**7**

## Define a Canvas for Each VMX300(-E) Client Window

Canvases are required if the window will be used to view video. Canvases define the video display technology available to that client, and they can include both analog and digital (IP-based) technologies.

1. Navigate the Object Browser tree to [project name] > Clients > [client name] > Windows > [window name] > Canvases for the window you just added.
2. Double-click <Add New Canvas>. The Add New Canvas dialog box appears.



**Figure 17.** Add New Canvas Dialog Box

3. Select the appropriate canvas from the drop-down box.
4. Click Settings to configure settings specific to the selected canvas (not available for all canvas types).

For example, if you select Quad Video Display, click Settings, and then click the input connector (differentiated by color) used by the device for which this canvas is used to view video. If you select MPEG click Settings to sort or edit the list of video signal types.

**NOTE:** The type of video signal that you select for an MPEG device's canvas will affect the total number of digital video streams that an operator can view at any one time. Refer to Table B for an overview of the maximum number of streams recommended for specific digital settings.

5. Click OK.
6. If the operator needs to view more than one type of video in this specific window, repeat these steps to add a canvas for each type of video. (Note that the system chooses which canvas to use based on the order the canvases are listed in the Object Browser.)

# HOW TO CHOOSE THE VIDEO STREAM SETTINGS FOR YOUR CONFIGURATION

VMX300(-E) can combine analog and digital video streams for viewing on the VMX300(-E) client. The total number of digital streams that can be displayed is limited by the size and type of images selected for viewing. Table B identifies the CPU workload and bandwidth amounts used for each type of video stream.

Table B includes the recommended PelcoNet™ setting, identified by the gray row. Your selections may vary, depending on system bandwidth limitations or other restrictions.

**CAUTION:** System performance will be compromised if the number of video streams is exceeded or if the PelcoNet settings exceed the recommendations provided in Table B.

Also note that CPU workload could vary, depending on additional system activity that may be occurring at the same time. For example, using scripts, viewing analog video, or using hyperlinks to change map displays could all affect the CPU workload. It is recommended that you monitor the CPU workload level under a variety of system conditions while testing your system configuration to identify the optimal number of digital video windows allowed for your configuration.

Note that if the VMX300(-E) client is operated from a separate workstation (instead of the same workstation running the VMX300(-E) server), then you may be able to display more digital windows, since the VMX300(-E) client would not be using the VMX300(-E) server's CPU.

**A NOTE ABOUT MULTIPLE CLIENTS:** If your system requires only one client, the client and server applications can both run on the same workstation. To optimize system performance in a multiple-client system, each client application should run from a dedicated client workstation. Additional servers in the same system (VMX300-E only) should be run from dedicated server workstations as well.

**Table B. Digital Video Stream Settings**

Settings	Maximum Number of Streams
<b>PelcoNet NET300 Series and NET350 Series Transmission Systems</b>	
VMX High Quality (Stream 1) ["Optimize" setting]	16
VMX Standard (Stream 2) ["Optimize" setting]	16
High Quality (CIF) [Factory default setting]	4
<b>DX9000 Series Digital Video Recorders</b>	
<b>Half Frame Rate</b>	
Live Video	16
Archived Video	16
<b>Full Frame Rate</b>	
Live Video	16
Archived Video	16
<b>PelcoNet NET4001A Transmission System</b>	
<b>MPEG4</b>	
High Quality (CIF) [Factory default setting]	12
VMX Standard ["Optimize" setting]	16
<b>MPEG2</b>	
5 MBps High Quality [Factory default setting]	5
2 MBps Low Delay ["Optimize" setting]	5
<b>DX8000 Series Digital Video Recorders</b>	
320x240 5 IPS ["Normal" image quality setting]	16
740x480 30 IPS ["Normal" image quality setting]	3 (or 6, if using two DX8000 units)
640x480 10 IPS ["Normal" image quality setting]	16

## Add Device Drivers to the Server Configuration

**NOTE:** To add a device driver to the server configuration, the driver must be running—either on the server workstation or on the network. Refer to *Step 4, Start VMX300(-E) Device Drivers*.

1. Navigate the Object Browser tree to [project name] > Device Drivers.
2. Two functions are provided for adding devices—Add New Driver or Autodiscover All Drivers. Use either option.

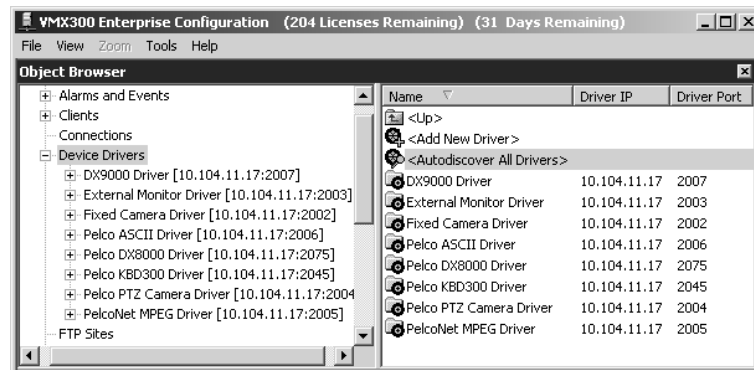


Figure 18. Device Drivers

### ADD NEW DRIVER

If you know a driver's IP address and port number, you can enter it manually by completing the following steps:

1. Double-click <Add New Driver> in the right pane of the Object Browser. The Add New Driver dialog box appears.
2. By default, the server's IP address appears in the Driver IP Address box. If the device driver is not installed on the server, type the IP address of the workstation the driver is installed on.

OR

Click Browse to browse the network for drivers that are currently running. The Browse Drivers dialog box lists all device drivers that are running at a network location visible to the server you are configuring, except drivers that are already configured on the server. Select the driver you want to add, and then click OK.

3. Type the listening port for the device driver you want to add. This is the port that was entered in the Configure Driver window when the device driver was launched. Refer to *Step 4: Start VMX300(-E) Device Drivers* for more information.
4. Optional: To verify that a device driver is running at the specified IP address and port number, click Check Now.
5. Click Add.
6. Repeat these steps for each device driver that you launched in *Step 4, Start VMX300(-E) Device Drivers*.

### AUTODISCOVER ALL DRIVERS

The Autodiscover All Drivers function locates all drivers running on the local area network (LAN) that are visible to the VMX300(-E) server. To add a driver that is running on a wide area network (WAN), use the Add New Driver option, described above.

1. Double-click <Autodiscover All Drivers> in the right pane of the Object Browser. A caution message appears.
2. Click Yes. The process may take several seconds; when it is complete, the new driver names appear in the Object Browser.
3. If the autodiscover function did not find every driver that you wanted to add, use the Add New Driver option to add the remaining drivers. In order for the VMX300(-E) system to locate a device driver automatically, the driver must be running at a network location that is visible to the VMX300(-E) server.



# 9 Add Devices

1. Navigate the Object Browser tree to [project name] > Device Drivers > [device driver name] > Devices.

Some device drivers, such as the PelcoNet MPEG driver or the ASCII driver, do not list the generic “Devices” label under the driver name. These drivers list either a specific type of device, such as “Switchers” or “Cameras,” or they list the device model, such as “PelcoNet 3xx Encoders.” To navigate to a specific device, click the label listed under the driver name, such as the PelcoNet model, as shown below.

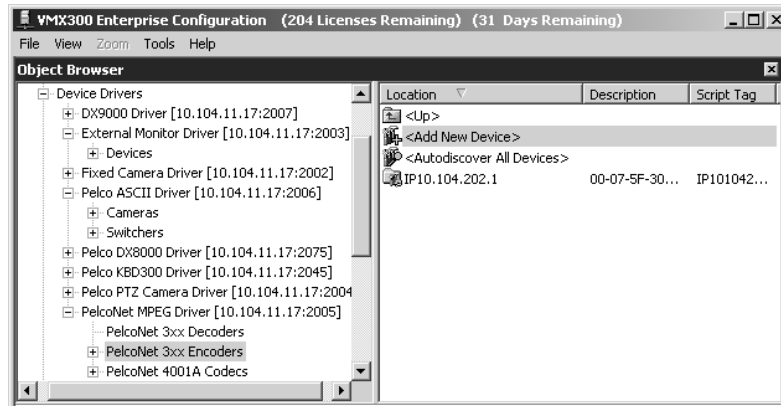


Figure 19. Sample Add Device Navigation

2. Two functions are provided for adding devices—Add New Device and Autodiscover All Devices. Use either option.

## ADD NEW DEVICE

You can enter a device manually by completing the following steps:

1. Double-click <Add New Device> in the right pane of the Object Browser. The Add New Device dialog box appears.
2. Enter a location name and an optional description on the General tab.
3. Configure the settings on any additional Add New Device dialog box tabs. The specific settings contained on these tabs vary, depending on the features supported by the device. Sample tabs include the following:

**Properties** Use this tab to specify display settings, such as a device icon’s color when it is in a normal state versus an alarm state.

**Communications** Use this tab to specify how the driver communicates with the device (serial or IP).

For information on device configuration settings, refer to the *Devices* section in the VMX300(-E) Server Configuration Manual.

4. Click OK.

## AUTODISCOVER ALL DEVICES

The Autodiscover All Devices function locates all IP devices of the selected type that are running on the local area network (LAN). To add a device that is running on a wide area network (WAN), use the Add New Device option, described above.

### NOTES:

- You can only locate IP devices automatically. You cannot automatically locate devices that are connected serially.
- In order for the VMX300(-E) server to locate a device automatically, the device driver must be running on the network and configured on the VMX300(-E) server. In addition, the device must be installed at a network location that is visible to the server.

1. Double-click < Autodiscover All Devices > in the right pane of the Object Browser.
2. Wait several seconds. When the process is complete, the new devices appear in the Object Browser.
3. To change any specific device settings, right-click the device, and then select Edit from the pop-up menu.

# 10 Define Analog Connections Between Devices

To view analog video from a VMX300(-E) workstation, you must identify the switch path of each analog connection in the VMX300(-E) system. This includes video sources connected directly to a VMX300(-E) workstation, or video input or output devices (such as a camera or monitor) connected by coaxial cable to a switching device (such as a switcher or a PelcoNet MPEG Series transmission system); the connection between the switching device and the VMX300(-E) workstation can be either a direct connection or over the network.

1. Navigate the Object Browser tree to [project name] > Connections.
2. In the right pane, double-click Analog Video Connections. The Analog Video Connections dialog box appears.
3. Click the appropriate Source Device in the left pane, and then double-click the Destination Device in the right pane that you want to connect the Source Device to. The Destination Device moves to the left pane and is displayed as part of the analog video connection. Repeat steps until all connections have been set.
4. Click File > Close to close the Analog Video Connections dialog box.

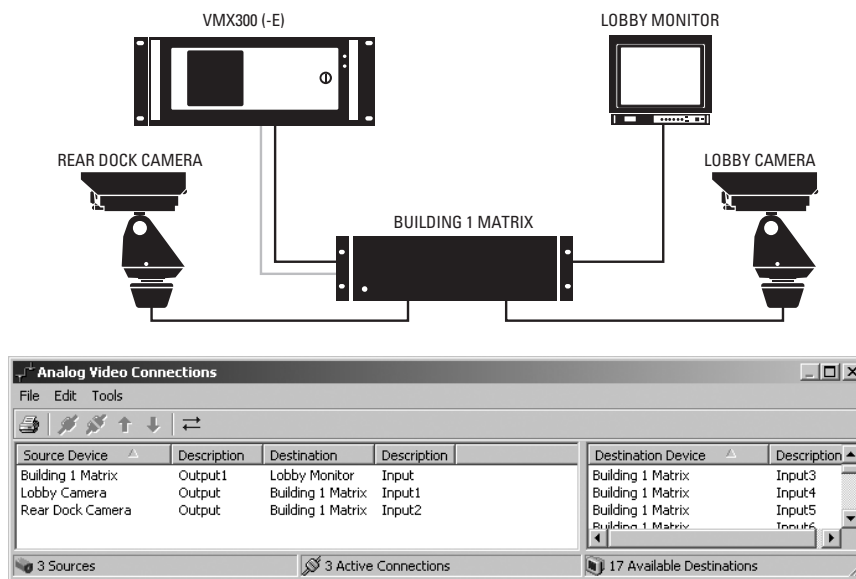


Figure 20. Sample Connections for a System Using a Matrix

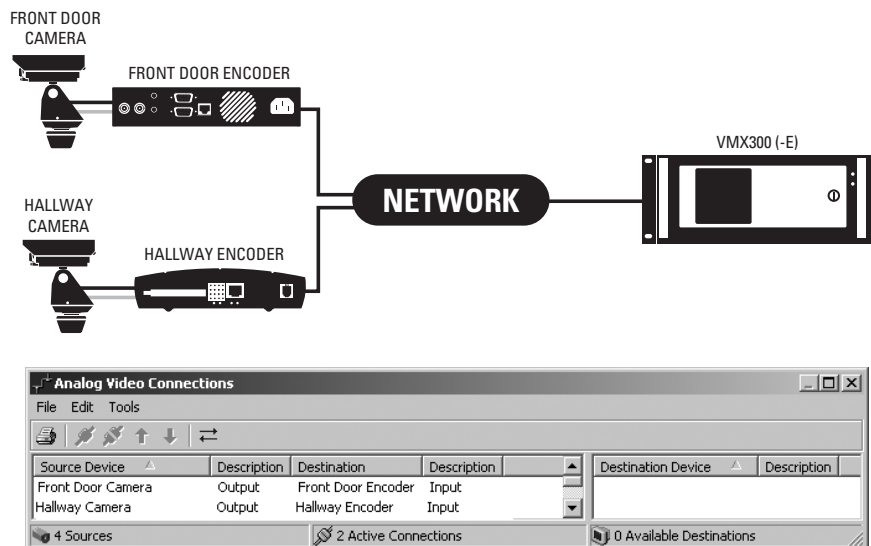


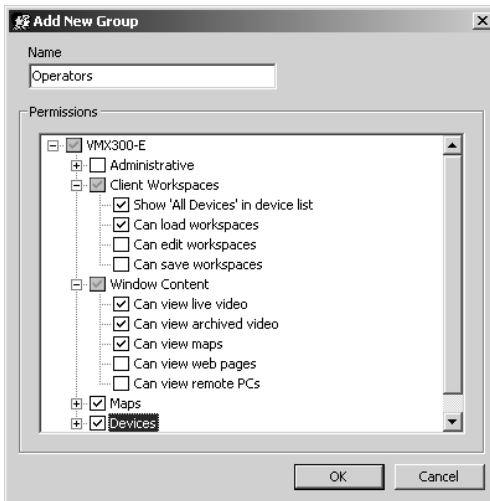
Figure 21. Sample Connections for a System Using PelcoNet Transmission Systems

# step 11 Add User Groups

This procedure is optional.

**NOTE:** The VMX300(-E) system is configured at the factory with a predefined user group, named Users, which has all permissions except the administrative permission.

1. Navigate the Object Browser tree to [project name] > User Groups.
2. Double-click <Add New User Group> in the right pane. The Add New Group dialog box appears.



**Figure 22.** Add New Group Dialog Box

3. Assign a group name, and then select the permissions you want members of the new group to have by checking the desired permissions in the Group Permissions tree.

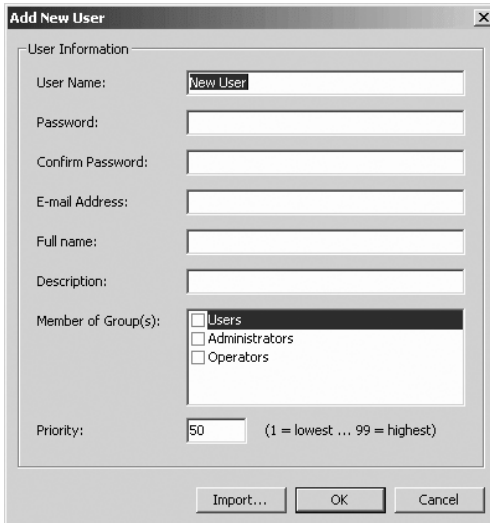
If necessary, click any check boxes that have a plus sign in them to expand the list.

# step 12 Add Users

This procedure is optional.

**NOTE:** The VMX300(-E) system is configured at the factory with a predefined user account that allows you to log in to the client without having to add a new user. The predefined user name is "user" and the account does not require a password.

1. Navigate the Object Browser tree to [project name] > Users.
2. Double-click <Add New User> in the right pane. The Add New User dialog box appears.



**Figure 23.** Add New User Dialog Box

3. Assign a user name and password, and then provide a full name and description, if desired. Note that the password is case sensitive, but the user name is not.
4. In the Member of Group(s) section, click the check box to select each user group you want the user to belong to.
5. Click OK.

# 13 Add Maps to the Server Configuration

This procedure is optional.

1. Navigate the Object Browser tree to [project name] > Maps.
2. Double-click <Add New Map>. The Add New Map dialog box appears.
3. Click Browse to locate the map file. VMX300(-E) accepts .jpg, .bmp, .wmf, and .emf file formats.



**NOTE:** To reduce the CPU workload, map files should be as small as possible. Avoid using files with a file size over 1 MB.

4. Select the desired file, and then click Open.
5. Click OK.
6. Optional: You may want to add some device icons to system maps so that they will be useful for system operators. To do so, complete the following steps:
  - a. Click the map name in the Object Browser tree, and then drag the map to the map viewport.
  - b. Release the mouse. The map appears in the viewport.

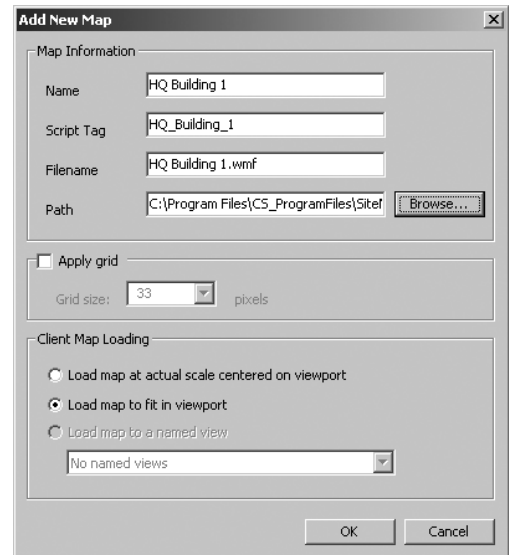


Figure 24. Add New Map Dialog Box

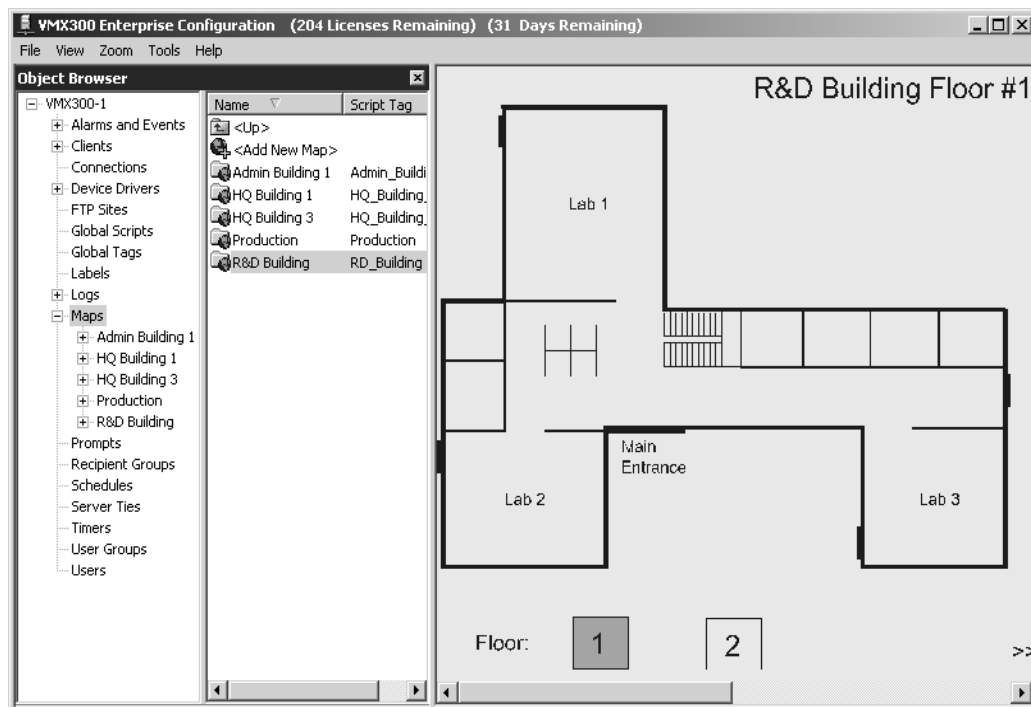


Figure 25. Viewing a Map in the Map Viewport

- c. Click the device name in the Object Browser tree and drag the device to the map.
  - d. Click the mouse again to release the device.
  - e. Repeat steps c and d for additional devices.
7. Repeat steps 2-6 for additional maps.

step

# 14 Customize and Automate Your System

---

The following procedures are optional.

## CUSTOMIZATION

VMX300(-E) provides numerous ways to customize your system. The following features are described in detail in the VMX300(-E) Server Configuration Manual:

- Configure device settings (configure device properties, local settings, and interlocks; view read properties; and assign write properties)
- Customize maps with device icons, named views, hotlinks, and labels
- Configure server ties if you have more than one server and wish to share video between servers

## AUTOMATION

VMX300(-E) provides powerful automation tools to manage your security system. The following automation features are described in detail in the VMX300(-E) Server Configuration Manual:

- Scripts—custom programs used to automate common tasks; includes global scripts and global tags
- Prompts—custom dialog boxes, such as error messages
- Timers and Schedules—features that allow you to execute system actions and scripts at a specific time
- Alarms and Events—configure alarm and event actions that are executed when specific conditions occur within the system
- Icons—add alarm and event icons to maps
- Recipient Groups—operators who are notified of scheduled actions and alarms and events

# step 15 Backup a Database

Use the Backup utility to create a backup of the server database and to save backup databases to alternative media (such as a CD).

**NOTE:** The Backup utility backs up the server database only. The Backup utility does not back up maps, workspace files, driver databases, archive server databases, or the client database.

1. Click File > Save to save the server configuration.
2. Click Tools > Database Utilities > Backup. The Backup Database dialog box opens.



**Figure 26.** Backup Database Dialog Box

3. Type an appropriate filename, and then navigate to a new folder location. Name the file with a recognizable filename, and save the file in a unique folder location that is separate from the backup files that are automatically generated by VMX300(-E). If you have to restore a database it will be very important to select the correct backup file.

Refer to the VMX300(-E) Server Configuration Manual for instructions on restoring a database.

4. Click Save.

# 16 Exit Server Configuration and Launch the Server in Run Mode

---

1. Click File > Exit and Run.
2. The save changes prompt appears. Click Yes to save changes.
3. When the verification procedure is complete, the server enters Run mode. The VMX300(-E) icon appears in the Windows system tray when the server is in Run mode.

## How to Return to the Server Configuration

To return to server configuration mode while the VMX300(-E) server is running, complete the following steps:

1. Double-click the VMX300 icon in the Windows system tray, and then select Configure from the pop-up menu (you can also access the pop-up menu by right-clicking the icon). The VMX300 Server Login dialog box appears.
2. Type your user name and password, and then click OK. After several seconds, the VMX300(-E) Configuration window appears.
3. After making changes to the server configuration, click File > Close or click the Close button at the right of the configuration window title bar. The confirmation dialog box prompts you to save your changes.
4. Click Yes. After the system verifies the configuration changes the VMX300(-E) Configuration window closes, momentarily interrupting operators logged in to the client. The server then resumes operation.



# step 17

## Test the Configuration and Evaluate the CPU Workload

Testing the configuration ensures that system devices are connected and configured correctly, and that custom windows are configured correctly.

1. Start the VMX300(-E) client: Start the client on any workstation that you added as a client. Select the VMX300(-E) client from the Windows Start menu, or double-click the VMX300(-E) client icon on the desktop.

**i IMPORTANT:** If the client is on a workstation separate from the server, you may need to log on to the Windows desktop (user name: AvUser; password: 1234).

2. Specify which servers are available to the client: Click the Servers button at the bottom of the Client Login dialog box. Click Discover All to autodiscover servers. Select the server and then click Set as Home Server. Refer to *Step 18, Specify Which Servers Are Available to the Client* for more information.
3. Log in: Use the predefined user account (user name: user; no password) to log in to the client.
4. Build workspace: When asked whether you want the system to build a workspace for you, click Yes.
5. Test devices: Drag a PTZ camera from the Device List to a custom window with the appropriate type of canvas to make sure you can view video from the camera. Right-click the camera in the Device List, and then select Show Control Dialog to open the camera's Device Control. Test controlling the camera. Repeat this for all cameras that are configured.

Test the other devices in the Device List. Refer to *Step 22, Work with Devices* for more information.

6. Evaluate the CPU workload: It is recommended that you monitor the CPU workload under a variety of system conditions while testing your system configuration. If your system frequently exceeds 85% CPU usage, you may experience system performance problems. The following factors can contribute to a high CPU workload:

- The number of custom windows that an operator is using at one time to view digital video streams
- The quality, bit rate, and type of digital video streams
- The file size of a map that an operator is viewing
- The size of device icons and alarm/event icons on maps
- The size and function of hotlinks on maps
- Whether a device icon or alarm/event icon is flashing to indicate an alarm state

To monitor the CPU workload, you can use either the VMX300(-E) Session Manager (in the client application) or the Windows Task Manager.

### Using the Windows Task Manager to Evaluate CPU Workload

Open the Windows Task Manager, and then click the Performance tab. The CPU Usage portion of the window displays the current workload level. You can also click on the Processes tab to see which programs are using which percentage of the CPU.

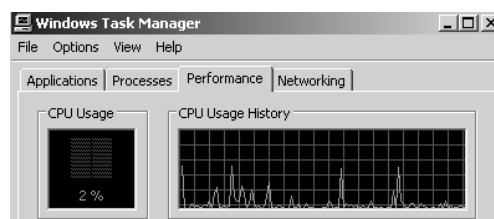


Figure 27. Windows Task Manager

### Using the Session Manager to Evaluate CPU Workload

The rectangle at the right end of the Session Manager tool bar represents the CPU usage of the workstation you are logged in to. As usage increases, the rectangle fills with color. Position the pointer over the rectangle to see a dynamic numeric readout of the CPU usage percentage.



Figure 28. Session Manager Tool Bar

# 18 Specify Which Servers are Available to the Client

This procedure is optional for the system administrator. If the system administrator does not specify the servers, the operator can complete this step the first time he uses the VMX300(-E) client.

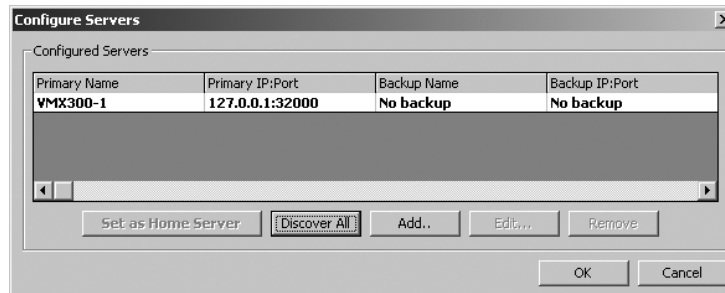
The first time the VMX300(-E) client is run on a workstation, you must specify which VMX300(-E) server(s) to connect to the client. Once specified, a client will connect to the configured servers by default. A user with appropriate permission can select different servers when logging on to the client. Server selection is client-specific. The same list of servers applies for every user who logs in from that client, unless the user changes the server list.

1. Click the Windows Start button, and then choose Programs > VMX300 > VMX300 Client.
2. The Corrupt or Missing Database message appears because VMX300(-E) must create a new database the first time you use it. Click Create.
3. The VMX300(-E) Client Login dialog box appears.



**Figure 29.** Client Login Dialog Box

4. Type the user name and password. Note that the password is case sensitive, but the user name is not.
5. Click Servers. The Configure Servers dialog box appears.



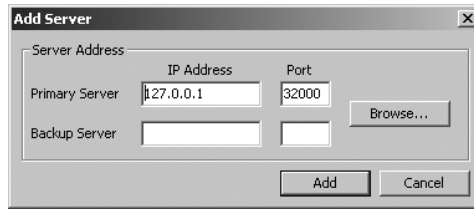
**Figure 30.** Configure Servers Dialog Box

6. Click either Discover All or Add to specify which server or servers the client will connect to.

The Add function adds servers to the Configured Servers list without clearing the existing list. The Discover All function clears any servers that are currently configured, and then adds each server that is running on the local network (LAN). To specify a server that is running on a wide area network (WAN), use the Add option.

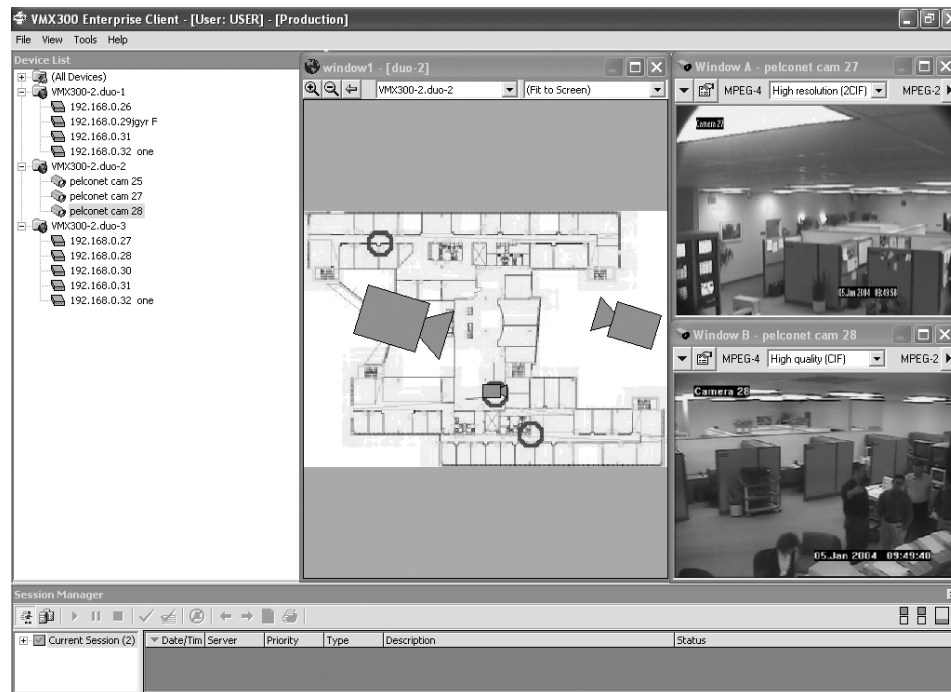
To use the Add function, complete the following additional steps:

- a. Click Add. The Add Server dialog box appears.



**Figure 31. Add Server Dialog Box**

- b. Type the IP address and port number of the server in the Primary Server fields.
  - OR
  - Click Browse to browse the network for a list of servers. The Browse Servers dialog box lists the servers that are running at a network location available to the client. Select the server, and then click OK.
  - c. Optional (VMX300-E only): To designate a backup server, type the IP address and port number of the backup server.
  - d. Click Add.
  - e. Optional: Repeat these steps to add another server to the Configured Servers list. Each time a user logs in to this VMX300(-E) client, he will be logged into every server in this list.
7. Click the server designated as a home server for the user, and then click Set as Home Server. The selected server is highlighted in bold in the server list.
  8. Optional: If there are any servers in the server list that the user should not be logged in to, click the server, and then click Remove.
  9. Click OK to close the Configured Servers dialog box.
  10. Click OK to log in. If the user is a member of more than one user group, the Select User Group dialog box appears. Select the desired user group from the drop-down box, and then click OK.
  11. The Workspace Not Found dialog box appears. Click Yes to have the system create a default workspace. The VMX300(-E) main user interface appears, displaying the default workspace configured by the system.



**Figure 32. Main User Interface**

# 19 Configure a Workspace

This procedure is optional for the system administrator. If the system administrator does not configure a workspace, VMX300(-E) provides several workspace configuration options, as described below.

A workspace controls which windows are displayed in the VMX300(-E) client and their size, position, and content. The system administrator may want to log into the client in order to configure a default workspace for users. VMX300( E) provides the following workspace options:

- The system administrator can specify a default workspace in the client configuration to load when a user logs in.
- VMX300(-E) can create a default workspace for each user upon login.
- A user with Client Workspace permissions can open a workspace once he is logged in.

## DEFAULT WORKSPACE:

To configure a workspace, a user must belong to a user group with Client Workspace permissions. To provide a default workspace for any users that are restricted from Client Workspace permissions, the system administrator should perform the following procedures:

- Log in to the client application with a user name that has full Client Workspace permissions.
- Create and save a workspace; instructions are provided below.
- Log in to the Server and specify the default workspace in the Edit Client Properties dialog box (right-click the client computer name, and then select Edit from the pop-up menu).

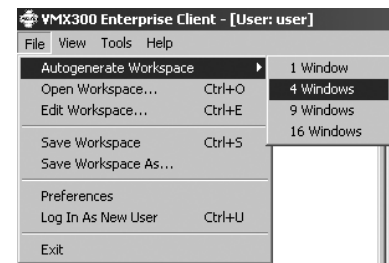
1. Use the mouse to resize and reposition the windows as desired.
2. Click File > Save Workspace. The Save Workspace dialog box appears.
3. Type a workspace name, and then click OK. The workspace name appears in the main window title bar.

## ALTERNATE OPTION 1

Click File > Autogenerate Workspace, and then select the number of windows you want to appear in the workspace.

The VMX300(-E) generates a workspace with the specified number of windows.

**NOTE:** The number of windows that the operator can use for viewing video is limited to the number of windows configured with a canvas. Refer to *Step 7, Define a Canvas for Each VMX300(-E) Client Window*. Also note that your specific system parameters will limit the number of digital video streams that an operator can view at any one time. Refer to Table B in *Step 7, Define a Canvas for Each VMX300(-E) Client Window* for an overview of the maximum number of streams recommended for specific digital settings.



**Figure 33.** Creating Workspaces with the Autogenerate Feature

## ALTERNATE OPTION 2

1. Click File > Edit Workspace. The Edit Workspace dialog box appears.

The Appearance, Size, and Position tabs control the appearance of each window. The Content tab controls window content. The Details tab provides troubleshooting information.

2. Click the name of the window you want to change, and then click the desired settings on the Edit Workspace dialog box tabs. To assign the same setting(s) to more than one window at a time, use the Shift or Ctrl key with the mouse to select more than one window, and then click the desired settings.

Refer to the VMX300(-E) Client Operation Manual for information on the setting options available in the Edit Workspace dialog box.

3. Click Close to close the Edit Workspace dialog box.
4. Click File > Save Workspace to save the changes.

# step 20 Start the Client

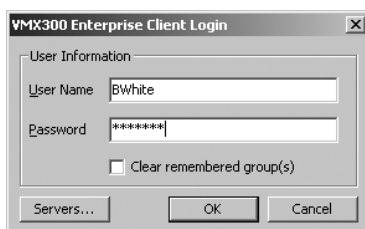
VMX300 provides the following ways to log in to the VMX300(-E) client:

- Launch the client and log in.
- Log in as a new user when the client is already running.

Instructions for each log-in method are provided in the following sections.

## LAUNCH THE CLIENT AND LOG IN

1. Click the Windows Start button, and then choose Programs > VMX300 > VMX300 Client.
2. If this is the first time the VMX300(-E) client has been launched on this workstation, the Corrupt or Missing Database message appears because VMX300(-E) must create a new database the first time you use it. Click Create.
3. The VMX300(-E) Client Login dialog box appears.

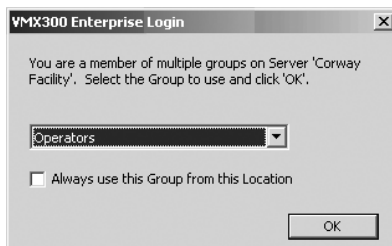


**Figure 34.** Client Login Dialog Box

4. Type your user name and password. Note that the password is case sensitive, but the user name is not.
5. (Optional) If this is the first time you have logged in, or if you want to log in to a server other than your usual server, click Servers. For more information on selecting a server, refer to *Step 18, Specify Which Servers are Available to the Client*.
6. Click OK to log in. The VMX300(-E) main user interface appears (refer to Figure 37 for a sample view of the interface).

### LOG-IN NOTES:

- If you are a member of more than one user group, the Select User Group dialog box appears, as illustrated in Figure 35. Select the desired user group from the drop-down box, and then click OK. If you belong to more than one user group, you should know what privileges each group has been granted. For more information, refer to the User Groups section in the VMX300(-E) Client Operation manual.



**Figure 35.** Select Group Dialog Box

- If the Workspace Not Found dialog box appears (as illustrated in Figure 36), click Yes to have the system create a default workspace.

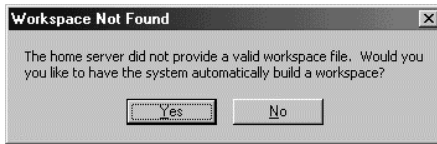


Figure 36. Workspace Not Found Dialog Box

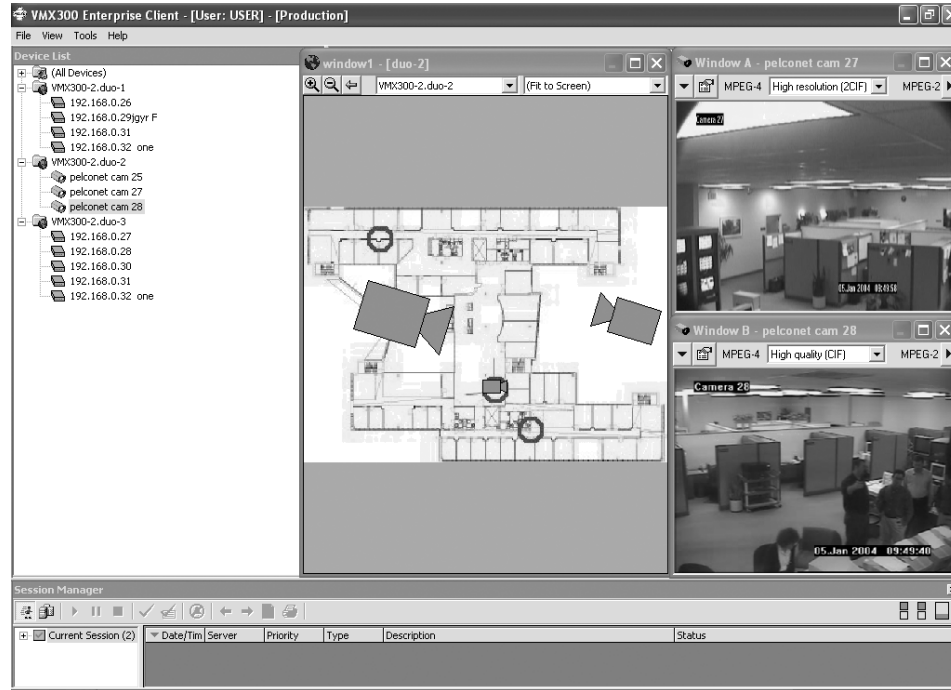


Figure 37. Main User Interface

## LOG IN WHEN THE CLIENT IS RUNNING

If the client is already running on the workstation you want to log in from, you can use the Log In As New User function to log in to the same server(s) as the previous user. The previous user is logged out when you log in.

**TIP:** If you belong to more than one user group and you want to work under a different user group, use the Log In As New User option to log out of the one group and into the other.

Note that the Log In As New User function logs you in to the same server(s) as the previous user. To log in to server(s) that are not currently configured for that client, you must shut down the client, then start it as described in the previous section, *Launch the Client and Log In*.

1. Select File > Log In As New User. The Client Login dialog box appears.



Figure 38. Client Login Dialog Box

2. Type your user name and password, and then click OK to log in. The VMX300(-E) main user interface appears (refer to Figure 37 for a sample view of the interface).

The previous user is logged out and you are logged in to all the configured servers that are available.

### LOG-IN NOTES:

- If you are a member of more than one user group, the Select User Group dialog box appears, as illustrated in Figure 35. Select the desired user group from the drop-down box, and then click OK. If you belong to more than one user group, you should know what privileges each group has been granted. For more information, refer to the User Groups section in the VMX300(-E) Client Operation manual.
- If the Workspace Not Found dialog box appears (as illustrated in Figure 36), click Yes to have the system create a default workspace.
- The previous user is not logged out until you have completed logging in. If you cancel out of the login procedure, the previous user remains logged in.

## USER GROUPS

When the system administrator sets up a user account for you, you are assigned to one or more user groups. Each user group provides a set of privileges to the members of the group. These privileges control which parts of the VMX300(-E) system you have access to and what events you are notified of. Your system administrator will tell you which user groups you belong to and what privileges you have.

When you log in, if you belong to more than one group, you must select one of the groups you belong to. For the duration of that session, your privileges are limited to those allowed by the group you selected when you logged in. To exercise the privileges of a different user group, you must log out and log in again, this time specifying the other user group.

### SETTING A DEFAULT USER GROUP

To save yourself the trouble of selecting a user group every time you log in, you can set a user group to log in to by default. Thereafter, the client will log you in automatically under the default group, providing you are connecting to the same server from the same client as when you set the default. You can later override the default (refer to the VMX300(-E) Client Operation manual for instructions).

1. In the Select Group Dialog Box select the desired user group from the drop-down box.



**Figure 39.** Setting a Default User Group

2. Click the “Always log in to this server as this group from this location” check box.
3. Click OK.

# step 21 Work with Maps

Maps can provide VMX300 operators with a representation of the site, complete with the devices and alarms installed. The map display is an active display, showing the current status of devices and alarms.

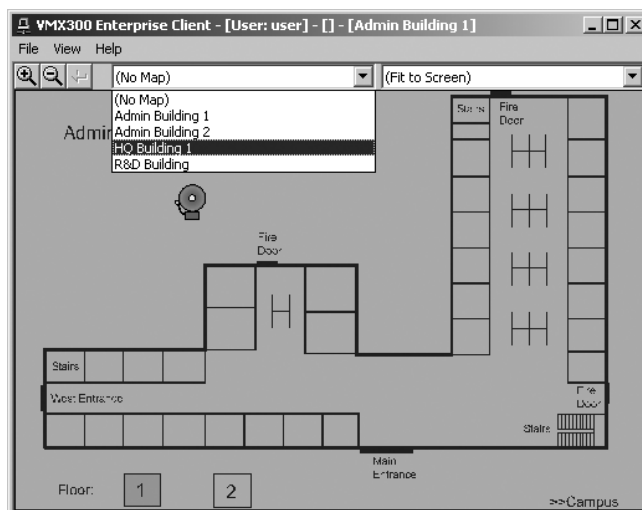
## HOW TO LOAD A MAP

You can load a map into the map viewport, which is part of the main window, or into a custom window. Note that the map viewport always remains on the bottom level of the VMX300(-E) main window. When you open custom windows, they appear over the map viewport, and multiple windows can cover the map viewport completely. If this is the case, you may want to view a map in a custom window. Refer to *Viewing Maps in a Custom Window* in *Step 23, Use Custom Windows*.

To load a map into the map viewport from the maps drop-down list, complete the following steps:

1. Click the down arrow in the Maps drop-down box. A list appears of all the maps configured on the servers you are connected to.

**NOTE:** To see the top portion of the map viewport, you may need to move or minimize any custom windows that may be covering the top of the map viewport, which contains the Maps drop-down box.



**Figure 40.** Loading a Map into the Map Viewport

2. Click the map you want to load in the viewport. The selected map appears in the viewport.

Note that you can also drag a map from the Device List to the map viewport or to a custom window. Refer to *Load a Map from the Device List* in *Step 22, Work with Devices*.

Additional information about map tools, including predefined views, hotlinks, and labels, is provided in the VMX300(-E) Client Operation Manual.



# HOW TO ADJUST THE MAP DISPLAY

## ZOOM IN

Use the Zoom-in tool in either of the ways described below:

### ZOOM IN INCREMENTALLY:

1. Click the Zoom-in tool and position the pointer over the map. The pointer displays as a magnifying glass with a plus sign in it.
2. Click anywhere on the map. The map displays at about 110% of its previous scale.
3. Repeat steps 1 and 2 to continue zooming in.

### ZOOM IN ON A SELECTED AREA:

1. Click the Zoom-in tool and position the pointer over the map. The pointer displays as a magnifying glass with a plus sign in it.
2. Position the pointer at one corner of the area you want to magnify, and then click and hold the left mouse button.
3. Drag the pointer to the opposite corner of the area you want to magnify, and then Release the mouse button.

The selected area is displayed as large as possible to fit within the current size of the display area.

## ZOOM OUT

Each time the Zoom-out tool is clicked, it decreases the size of the displayed map by about 10%.

## PREVIOUS VIEW TOOL

The Previous View tool retrieves whatever was last displayed in the map viewport, allowing you to step back through the history of the viewport. Every time the display in the viewport changes, either because you have loaded a different map or predefined view, or because you have adjusted the display by zooming or scrolling, VMX300(-E) records the view.

To display the previous view, click the Previous View tool.

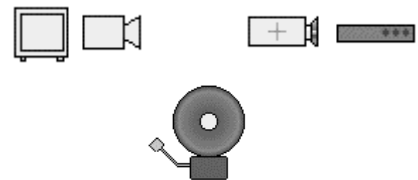
# ICONS

Your system administrator can customize maps by placing icons on them that represent alarms, events, and devices installed in the field.

Device icons provide tools that allow you to monitor your system's equipment.

Alarm icons can

- indicate when an alarm has been triggered,
- indicate when an alarm has been handled by an operator,
- indicate whether the condition that triggers the alarm is true or false,
- allow an operator to acknowledge an alarm.



For instructions on using device icons refer to *Step 22, Work with Devices*. For more information on working with alarms, refer to the VMX300(-E) Client Operation Manual.

# 22 Work with Devices

System devices are represented in VMX300(-E) through device icons placed on maps and the Device List. The Device List and device icons enable you to

- switch devices,
- access device controls,
- view device gadgets,
- run scripts and stop scripts.

## DEVICE ICONS

Device icons represent the equipment installed at your site. You can position the cursor over a device icon to display information on the device and its driver, including the device name, and the IP address and port of the workstation the device driver is running on.

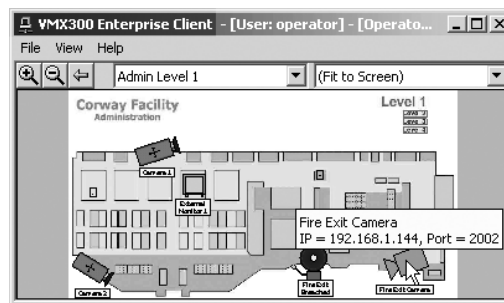


Figure 41. Device Icons

A device icon that appears as a hollow outline indicates that the device driver for that device is not running. Notify your system administrator if you see a hollow device icon, as shown in the following graphic.

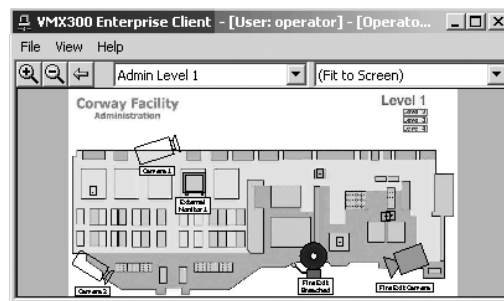


Figure 42. Device Driver Not Running

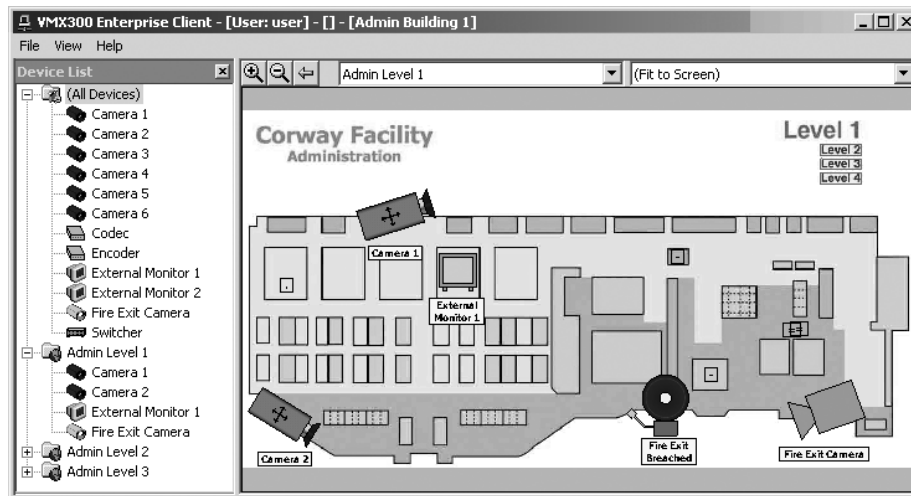
## DEVICE LIST

The Device List provides a list of devices configured on the servers the client is connected to (as long as you have access privileges for the devices). The Device List allows you to switch and control devices without using a map.

**NOTE:** To view the Device List, you must belong to, and log in under, a user group that allows you to edit workspaces. If the Device List does not appear in the list of items on the View menu, then you have no control over its display.

To open the Device List window, click the View menu, and then click Device List. The Device List window appears and a check mark appears next to Device List on the View menu. To close the Device List window, click the Close button in the right corner of the window's title bar, or uncheck Device List in the View menu.

If you have permission to edit workspaces, you can open and close the Device List window using the Edit Workspace option of the File menu.



**Figure 43. Device List**

The Device List is organized into sublists. The sublist named All Devices lists all devices configured on connected servers in alphabetical order. To view the devices in the All Devices sublist, expand the list by clicking the plus sign. Note that the All Devices sublist is not visible if you do not have access privileges for All Devices.

Below the All Devices sublist is a sublist for each map you have access to. Expand the sublist for a map to view the devices on the map. A map only appears in the Device List if it has at least one device icon on it. A device can appear in the Device List more than once. If the device has an icon on more than one map, the device is listed under each map's sublist, as well as under the All Devices sublist.

## LOAD A MAP FROM THE DEVICE LIST

You can load a map that is listed in the Device List by dragging the map from the Device List to the map viewport or to a custom window.

## SWITCHING A DEVICE

Switching refers to sending the source device's signal to a destination. Cameras are source devices. Custom windows, external monitors, and recording devices are destinations. To switch a particular analog device to a particular destination, your system administrator must configure the server to allow it. The system administrator should tell you which devices can be switched to which destinations.

To switch a device in VMX300(-E) drag the source device to the destination. You can drag either device icons placed on maps or devices listed in the Device List. Table C lists the methods of switching devices.

**Table C. How to Switch Devices from VMX300(-E)**

Drag Source	To Destination
Device listed in Device List	Device listed in Device List
Device listed in Device List	Device icon placed on map
Device listed in Device List	Custom window
Device icon placed on map	Device listed in Device List
Device icon placed on map	Device icon placed on map
Device icon placed on map	Custom window

## VIEWING A DEVICE'S GADGET

A gadget is a tool bar that provides tools for controlling a particular type of device. For example, the gadget for a particular model of camera might have tools to move the camera to a preset, make the camera run a pattern, and lock the camera. Refer to the *Devices* section in the VMX300(-E) Client Operation Manual for information on the tools available in a device's gadget.

**NOTE:** Only devices that are controllable have a gadget. Devices that cannot be controlled, such as fixed cameras and external monitors, do not have a gadget. To view a device's gadget you must belong to, and log in under, a user group that allows you to access the device.

### VIEW A DEVICE'S GADGET IN A CUSTOM WINDOW

Switch the device to a custom window. The gadget appears at the top of the custom window.



Figure 44. Viewing a Gadget in a Custom Window

### VIEW A DEVICE'S GADGET FROM A DESTINATION DEVICE

1. Switch the device to a destination device, such as an external monitor.



Figure 45. Viewing Gadget from Destination Device

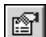
2. Right-click the destination device in the Device List, or right-click its icon on a map. A pop-up menu opens.
3. Click Show Gadgets, and then select the gadget from the submenu.

The gadget appears in its own window with a title bar that identifies the destination device. Click the X in the upper right corner of the gadget window to close it.

## ACCESSING A DEVICE'S CONTROLS

To access the Device Control dialog box for a particular device, you must belong to, and log in under, a user group that allows you to access the dialog box. Note that not all devices have controls. Devices that cannot be controlled such as fixed cameras and external monitors, do not have a Device Control dialog box.

To open the Device Control dialog box use one of the following methods:

- Double-click the device icon on a map.
- Double-click the device in the Device List.
- Right-click the device in the Device List, and then select Show Device Control from the pop-up menu.
- Click the Device Control button in the device's gadget. 

**NOTE:** If a device's driver is not running when you double-click the device, you will get a connection error. Notify your system administrator.

# step 23 Use Custom Windows

Custom windows are windows defined by your system administrator. They can be used to

- view live and archived video,
- display an Internet browser,
- connect to a remote computer,
- display maps.

Custom windows that are used for viewing video are defined by the system administrator to display specific types of analog or digital video. Depending on your system's specific settings, you may be able to display more than one digital video window at a time. The number of digital video windows that can be displayed at one time is limited by the size and type of images selected for viewing. Table B in *Step 7, Define a Canvas for Each VMX300(-E) Client Window* provides an overview of the CPU workload and bandwidth amounts used for each type of video stream (the video in a custom window).

To open a custom window, click View > Windows > [custom window name]. To close a custom window, click the X in the upper right corner, or click the window, press Alt+Space Bar, and select Close from the pop-up menu.

**NOTE:** If you have permission to edit workspaces, you can open and close a custom window using the Edit Workspace option of the File menu.

To load a particular type of content into a custom window (such as live video, archived video, or maps), the following conditions must be met:

- You must be logged in under a user group that permits you to access that type of content. Refer to *Step 11, Add User Groups* for more information.
- The workspace must permit that type of content. If you have permission to work with workspaces, you can edit the workspace and set the types of permitted content.
- To view live or archived video, the window must be configured for video on the server (by the system administrator).

## VIEWING LIVE VIDEO

1. Click the desired window, and then press Alt+Space Bar. The Custom Window pop-up menu appears.
2. Select Live Video. The Live Video control bar appears above the display area.

If a device is switched to the window, a gadget will display in the window's control bar. If no device is switched to the window, "<< no controls available >>" appears in the control bar.

3. Switch the source of the video (generally a camera) into the custom window. The video appears in the display area and the source device's gadget displays in the window's control bar.

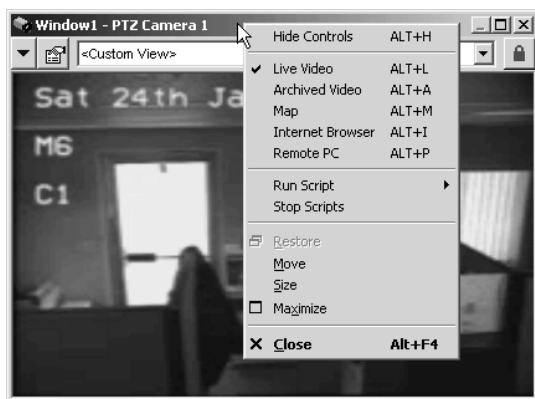


Figure 46. Custom Window Menu





Figure 47. Live Video with Gadget

## CAPTURING LIVE VIDEO

Some canvas gadgets have a Capture and Save Image button that allows you to capture an image of the video displayed in the window. Images are saved in JPEG file format.

To capture a live video image complete the following steps:

1. Click the Gadgets button , and then select the canvas gadget from the drop-down list. The canvas gadget displays in the window's control bar.
2. Click the Capture and Save Image button . The Save JPEG As dialog box opens.
3. Browse to the desired folder and type in a file name.
4. Click Save. The image file is saved and the Save JPEG As dialog box closes.

## VIEWING ARCHIVED VIDEO

Note that you can view video from a server other than your home server only if your system administrator has configured the servers to allow it.






1. Click the desired window, and then press Alt+Space Bar. The Custom Window pop-up menu appears.
2. Select Archived Video. The Event Picker appears below the window's display area. If a device is switched to the window, a gadget appears in the window's control bar. If no device is switched to the window, "<< no controls available >>" appears in the control bar.
3. Switch the source device (generally a camera) to the window. Note that the source device is the device the video originated from, not the device that recorded the video.
4. Select and load the archived video using the date/time selector. Refer to the *Event Picker* section for instructions. The archived video appears in the display area.



Figure 48. Sample Archived Video Display

## CONTROLLING AN ARCHIVE DEVICE

The particular tools available for controlling an archive device depend on the model of archive device. Typically, there are these tools:

-  • **Play:** Play the video.
-  • **Pause:** Pause playing video. Click the Pause button again to resume playing.
-  • **Stop:** Stop playing video and unload it from the custom window.
-  • **Rewind:** Rewind the video.
-  • **Fast forward:** Advance the video.
- **Date and time:** Indicates the playback date and time of the currently playing video.

For information on the tools available for a particular model of archive device, refer to the Devices section.

Archived video automatically starts playing when it is loaded into a custom window. If a date/time is selected in the Event Picker, the video will be cued to that date/time. If no date/time is selected, the video will be cued at or near the current date/time. While archived video is playing, the green arrow in the Event Picker advances across the Event row. Refer to *Event Picker* for instructions on locating, selecting and loading archived video.

If you have stopped or paused the video, you can resume it by clicking the Play button.

## VIEWING MAPS IN A CUSTOM WINDOW

1. Click the desired window, and then press Alt+Space Bar. The Custom Window pop-up menu appears.
2. Select Map. The Map control bar appears above the display area.

The Map control bar has the same tools as the main window's Map Viewport tool bar. The tools work the same way, except they act on the map in the custom window rather than the map in the Main window's map viewport. For information on using the zoom tools, the Previous View tool, and the predefined views drop-down list, refer to *Step 21, Work with Maps*.

3. Click the arrow in the map name field, and then select a map from the drop-down list.

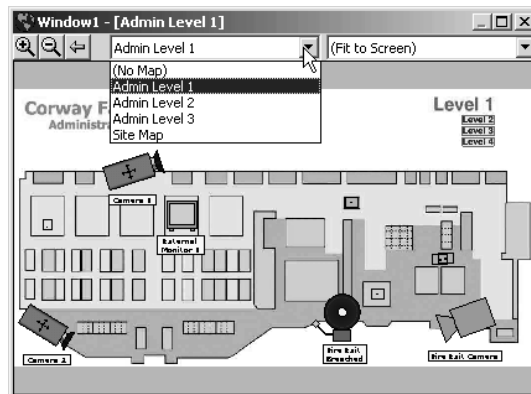


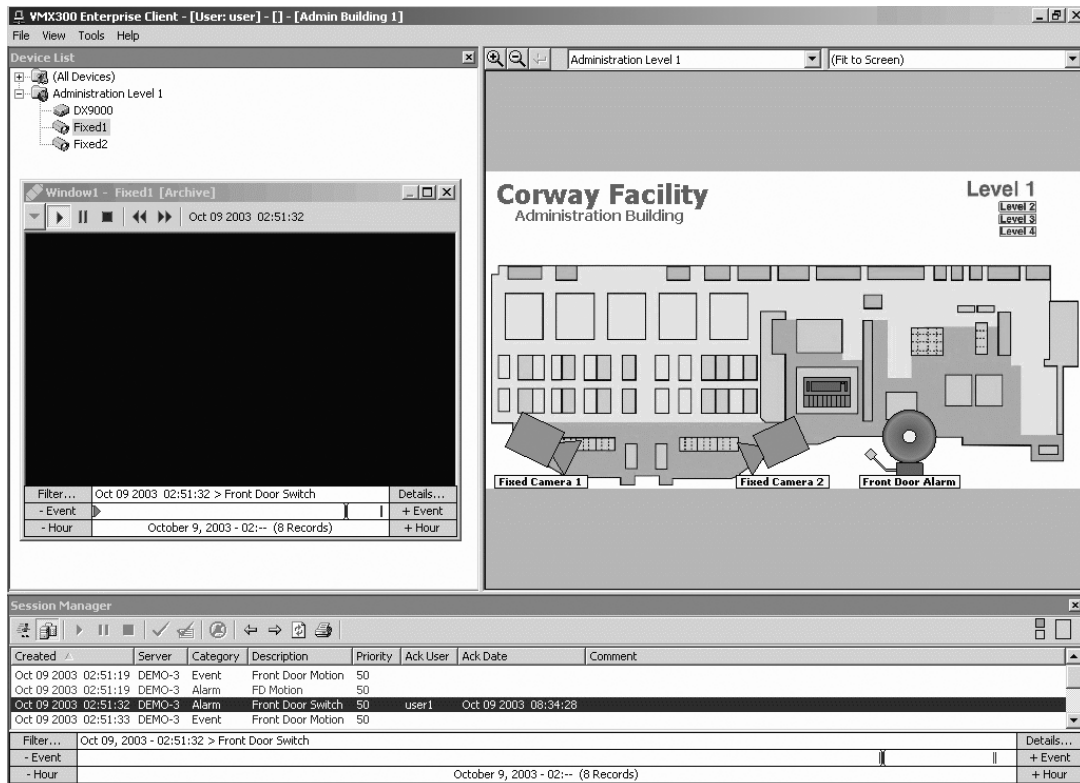
Figure 49. Selecting a Map

# 24 Use the Event Picker

Use the Event Picker to retrieve archived video and archived alarms and events. You can access the Event Picker through either

- a custom window that has archived video selected for it, or
- through the Session Manager Archive View (refer to the VMX300(-E) Client Operation manual for more information about the Session Manager).

You can have more than one Event Picker open at a time: one in the Session Manager, and one in each custom window in Archived Video mode.



**Figure 50.** Event Picker in Session Manager

The easiest way to locate an archive is to zero in on the date/time of the archive as closely as you can, and then browse or filter the retrieved archives:

1. Select a date/time as close to the date/time of the archive as possible, either by building a date/time from the year down or by zooming to a time unit. Refer to the following sections on *Building a Date/Time* and *Zooming to a Time Unit* for instructions.

The selected date/time appears in the bottom row of the Event Picker.

Minute	Click to select a Minute		Clear
Hour	08		Clear
Day		Wed 28	Clear
Month	January		Clear
Year		2004	Clear
- Hour	January 28, 2004 - 08:--		+ Hour

**Figure 51.** Selecting Date/Time



2. Click the date/time in the bottom row of the Event Picker.

The Event Picker retrieves all the archives for the time period selected. For example, if you specified a date/time down to the hour, all archives for that hour appear. Each archived alarm or event is represented in the Event Picker as a small vertical bar in the Event row. The number of retrieved events is given in the bottom row between parentheses.

Filter...	Jan 28 2004 08:38:23 > Camera Comm Loss	Details...
- Event		+ Event
- Hour	January 28, 2004 - 08:-- (7 Records)	+ Hour

**Figure 52. Retrieved Events**

The double vertical bar in the Event row is the Picker, which indicates the selected event. The date, time, and description of the selected event appear in the top row of the Event Picker. Drag the Picker to the left or right to change the Event Picker date/time and to select a different event. Or, click -Event or +Event to jump the Picker to the previous event or next event.

**NOTE:** If you are using the Event Picker in a custom window and a camera is switched to the window, VMX300(-E) will automatically load and play the archived video for that camera, cued to the date/time selected in the Event Picker. Rewind or advance the video using the tools in the gadget to locate the video you want.

3. You can browse the archives to locate the ones you want. Refer to the *Browsing Archives* section in the following pages for instructions.

You can filter the archives by specifying event criteria. Refer to the *Filtering Archived Alarms and Events* section in the VMX300(-E) Client Operation Manual. You can also view the details of an archived event. Refer to the *Archive View—Details* section in the VMX300(-E) Client Operation Manual for instructions.

## BUILDING A DATE/TIME

The Event Picker's date/time selector allows you to build a date/time starting with the year, then the month, day, hour, and then down to the minute. Narrow it down as much as you can, and then retrieve the archives and browse or filter to locate the desired events. The date/time appears in the bottom row of the date/time selector as you build it.

**NOTE:** You cannot select a date/time in the future.

1. If "Click to select a Date/Time" does not appear in the bottom row of the Event Picker, right-click the Event Picker, and then select Clear from the pop-up menu. "Click to select a Date/Time" will appear in the bottom row of the Event Picker.

Hour	Click to select a Hour	Clear
Day	Sat 05	Clear
Month	April	Clear
Year		2003
- Day	April 5, 2003	+ Day

Cursor Mode ▾  
 Zoom to Minutes  
 Zoom to Hours  
 Zoom to Days  
 Zoom to Months  
 Zoom to Years  
**Clear**  
 Refresh

**Figure 53. Clearing the Event Picker**

2. Click anywhere on the bottom row of the Event Picker. The Year row appears above the bottom row.

Year	Click to select a Year	Clear
----	Click to select a Date/Time	----

**Figure 54. Selecting Year**

3. Click anywhere on the Year row. A year appears in the Year row, as well as in the bottom row. The bottom row displays "-Year" at the left end and "+Year" at the right end. The Month row appears above the Year row.

Month	Click to select a Month	Clear
Year	2003	Clear
- Year	2003	+ Year

**Figure 55. Selecting Month**

- Continue clicking across the Year row until you locate the year you want. Years are distributed across the row, with the current year at the far right. Or, you can click -Year and +Year to change the year. The selected year appears in the Year row and the bottom row.
- If you know what month of archive you want to view, click on the Month row. Otherwise, go to step 8.

The selected month appears in the Month row, as well as in the date you are building in the bottom row. The bottom row displays -Month at the left end and +Month at the right end. The Day row appears above the Month row.

- Continue clicking across the Month row until you locate the month you want. Months are distributed across the row, with the current month at the far right. Or, you can click -Month and +Month to change the month.

The selected month appears in the Month row and the bottom row.

- Continue building the date until you have narrowed it down as much as you can. Select the day, if you know the day, and the hour, if you know the hour, and the minute, if you know the minute. The date/time you have built appear in the bottom row.

- Click the date/time in the bottom row of the date/time selector.

The archive server retrieves all the archives for the time period selected. For example, if you specified a date/time down to the hour, all archives for that hour appear. Each archived event is represented in the Event Picker as a small vertical bar in the Event row.

Filter...	Jan 28 2004 08:38:23 > Camera Comm Loss	Details...
- Event		+ Event
- Hour	January 28, 2004 - 08:-- (7 Records)	+ Hour

**Figure 56.** Retrieved Events

You can back out of a date you are building by clicking Clear at the right end of any row in the Event Picker. For example, if you have narrowed down a date to the minute, clicking Clear at the end of the Day row clears the minute, hour, and day, leaving just the month and year.

**NOTE:** If you are using the Event Picker in a custom window and a camera is switched to the window, VMX300(-E) will automatically load and play the archived video for that camera, cued to the date/time selected in the Event Picker. Rewind or advance the video using the tools in the gadget to locate the video you want.

## ZOOMING TO A TIME UNIT

The Event Picker provides a pop-up menu that allows you to zoom to a time unit. Right-click the Event Picker's bottom row to open the pop-up menu. Table D describes the options provided on the pop-up menu.

The options have a different effect depending on whether an event is already selected or not. If no event is currently selected, the zoom options zoom to the current date/time. If an event is currently selected, the zoom options zoom to the time unit of the selected event.



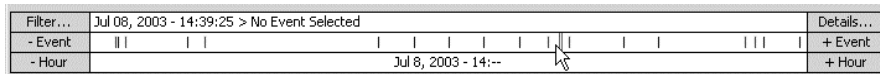
**Figure 57.** Event Picker Pop-up Menu

**Table D. Event Picker Pop-up Menu Options**

Menu Option	Function
Cursor Mode	Determines what date/time is displayed in the top row of the Event Picker. The Cursor Mode option is only available when you are using the Event Picker in a custom window. Refer to the <i>Viewing Archived Video—Cursor Mode</i> section in the VMX300(-E) Client Operation manual for more information.
Zoom to Minutes	If no event is selected, displays the current date/time down to the minute in the bottom row of the date/time selector. If an event is selected, lists all the events archived in the same minute as the selected event.
Zoom to Hours	If no event is selected, displays the current date/time down to the hour in the bottom row of the date/time selector. If an event is selected, lists all the events archived in the same hour as the selected event.
Zoom to Days	If no event is selected, displays the current date/time down to the day in the bottom row of the date/ time selector. If an event is selected, lists all the events archived in the same day as the selected event.
Zoom to Months	If no event is selected, displays the current month and year in the bottom row of the date/time selector. If an event is selected, lists all the events archived in the same month as the selected event.
Zoom to Years	If no event is selected, displays the current year in the bottom row of the date/time selector. If an event is selected, lists all the events archived in the same year as the selected event.
Clear	Deselects the currently selected event, if there is one.
Refresh	Updates the list of events. Useful for viewing newly archived events.

## BROWSING ARCHIVES


1. Select an event by clicking its bar in the Event row of the Event Picker. Your selection is highlighted in the Event Picker. The date/time the event was archived and its description appear in the top row of the Event Picker.
2. Move to another event by clicking the Event row or by dragging the slider bar in the Event row.



**Figure 58. Browsing Archived Events**

Go to the next event by clicking +Event at the right of the Event row. Or, go to the previous event by clicking -Event at the left of the Event row.

3. To reduce the number of events displayed, zoom to a smaller time unit. To increase the number of events displayed, zoom to a larger time unit. Refer to the Zooming to a Time Unit section for instructions.

 **NOTE:** You cannot step to an event outside the selected time range.

# 25 How to Shut Down the VMX300(-E) Software

## HOW TO SHUT DOWN THE CLIENT

Select File > Exit. The VMX300(-E) client logs you out and shuts down. Note that the monitor screen may appear black for about five seconds, and then the Windows desktop appears. This is part of the normal shutting down process.

### SHUTTING DOWN WHILE IN RUN MODE

1. Right-click the VMX300 icon in the Windows system tray, and then select Exit from the pop-up menu.
2. The shutdown prompt appears.
3. Click Yes. The server shuts down.

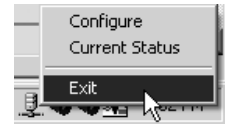


Figure 59. Run Mode Pop-upMenu

### SHUTTING DOWN WHILE IN CONFIGURATION MODE ONLY

**NOTE:** If the server is in both Run mode and Configuration mode, you must shut it down through Run mode. You cannot shut down the server from Configuration mode when the server is running. Closing the configuration when the server is in Run mode leaves the server running.

1. If the server is in Configuration mode only, click File > Exit.

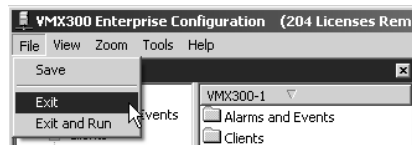


Figure 60. File Menu

2. If the server configuration has not changed, the server shuts down immediately.

If you made any changes to the configuration, the Save Changes prompt appears. Click Yes to save changes.

If any scripts or expressions contain errors, the Script and Expression Verification window appears. Use this window to correct the errors (refer to Syntax Error Checking in the Scripts section of the VMX300(-E) Server Configuration Manual for instructions), and then click OK. The Script and Expression Verification window closes and the server shuts down.

## HOW TO SHUT DOWN A DEVICE DRIVER

1. Right-click the appropriate device driver icon in the Windows system tray, and then select Exit from the pop-up menu. A confirmation dialog box appears.
2. Click Yes. The driver shuts down.

**NOTE:** If the device driver is running as a service, you can shut it down manually by selecting Start > Settings > Control Panel Administrative Tools > Services. Right-click the driver, and then click Stop.

## PRODUCT WARRANTY AND RETURN INFORMATION

### WARRANTY

Pelco will repair or replace, without charge, any merchandise proved defective in material or workmanship **for a period of one year** after the date of shipment.

Exceptions to this warranty are as noted below:

- Five years on FT/FR8000 Series fiber optic products.
- Three years on Genex® Series products (multiplexers, server, and keyboard).
- Three years on Camclosure® and fixed camera models, except the CC3701H-2, CC3701H-2X, CC3751H-2, CC3651H-2X, MC3651H-2, and MC3651H-2X camera models, which have a five-year warranty.
- Two years on standard motorized or fixed focal length lenses.
- Two years on Legacy®, CM6700/CM6800/CM9700 Series matrix, and DF5/DF8 Series fixed dome products.
- Two years on Spectra®, Esprit®, ExSite™, and PS20 scanners, including when used in continuous motion applications.
- Two years on Esprit® and WW5700 Series window wiper (excluding wiper blades).
- Eighteen months on DX Series digital video recorders, NVR300 Series network video recorders, and Endura™ Series distributed network-based video products.
- One year (except video heads) on video cassette recorders (VCRs). Video heads will be covered for a period of six months.
- Six months on all pan and tilts, scanners or preset lenses used in continuous motion applications (that is, preset scan, tour and auto scan modes).

Pelco will warrant all replacement parts and repairs for 90 days from the date of Pelco shipment. All goods requiring warranty repair shall be sent freight prepaid to Pelco, Clovis, California. Repairs made necessary by reason of misuse, alteration, normal wear, or accident are not covered under this warranty.

Pelco assumes no risk and shall be subject to no liability for damages or loss resulting from the specific use or application made of the Products. Pelco's liability for any claim, whether based on breach of contract, negligence, infringement of any rights of any party or product liability, relating to the Products shall not exceed the price paid by the Dealer to Pelco for such Products. In no event will Pelco be liable for any special, incidental or consequential damages (including loss of use, loss of profit and claims of third parties) however caused, whether by the negligence of Pelco or otherwise.

The above warranty provides the Dealer with specific legal rights. The Dealer may also have additional rights, which are subject to variation from state to state.

If a warranty repair is required, the Dealer must contact Pelco at (800) 289-9100 or (559) 292-1981 to obtain a Repair Authorization number (RA), and provide the following information:

1. Model and serial number
2. Date of shipment, P.O. number, Sales Order number, or Pelco invoice number
3. Details of the defect or problem

If there is a dispute regarding the warranty of a product which does not fall under the warranty conditions stated above, please include a written explanation with the product when returned.

Method of return shipment shall be the same or equal to the method by which the item was received by Pelco.

### RETURNS

In order to expedite parts returned to the factory for repair or credit, please call the factory at (800) 289-9100 or (559) 292-1981 to obtain an authorization number (CA number if returned for credit, and RA number if returned for repair).

All merchandise returned for credit may be subject to a 20% restocking and refurbishing charge.

Goods returned for repair or credit should be clearly identified with the assigned CA or RA number and freight should be prepaid. Ship to the appropriate address below.

*If you are located within the continental U.S., Alaska, Hawaii or Puerto Rico, send goods to:*

Service Department  
Pelco  
3500 Pelco Way  
Clovis, CA 93612-5699

*If you are located outside the continental U.S., Alaska, Hawaii or Puerto Rico and are instructed to return goods to the USA, you may do one of the following:*

If the goods are to be sent by a COURIER SERVICE, send the goods to:

Pelco  
3500 Pelco Way  
Clovis, CA 93612-5699 USA

If the goods are to be sent by a FREIGHT FORWARDER, send the goods to:

Pelco c/o Expeditors  
473 Eccles Avenue  
South San Francisco, CA 94080 USA  
Phone: 650-737-1700  
Fax: 650-737-0933

### REVISION HISTORY

Manual #	Date	Comments
C1561M	8/04	Original version.
C1561M-A	4/05	Revised to reflect software changes (as a result of ECO 04-10212).

Pelco and the Pelco logo are registered trademarks of Pelco.  
PelcoNet, Endura, and ExSite are trademarks of Pelco.  
Microsoft and Windows are registered trademarks of the Microsoft Corporation.

©Copyright 2005, Pelco. All rights reserved.



Worldwide Headquarters  
3500 Pelco Way  
Clovis, California 93612 USA

USA & Canada  
Tel: 800/289-9100  
Fax: 800/289-9150

International  
Tel: 1-559/292-1981  
Fax: 1-559/348-1120

**[www.pelco.com](http://www.pelco.com)**

**ISO9001**

United States | Canada | United Kingdom | The Netherlands | Singapore | Spain | Scandinavia | France | Middle East

## Free Manuals Download Website

<http://myh66.com>

<http://usermanuals.us>

<http://www.somanuals.com>

<http://www.4manuals.cc>

<http://www.manual-lib.com>

<http://www.404manual.com>

<http://www.luxmanual.com>

<http://aubethermostatmanual.com>

Golf course search by state

<http://golfingnear.com>

Email search by domain

<http://emailbydomain.com>

Auto manuals search

<http://auto.somanuals.com>

TV manuals search

<http://tv.somanuals.com>