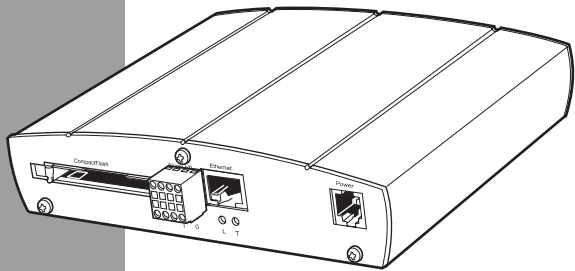
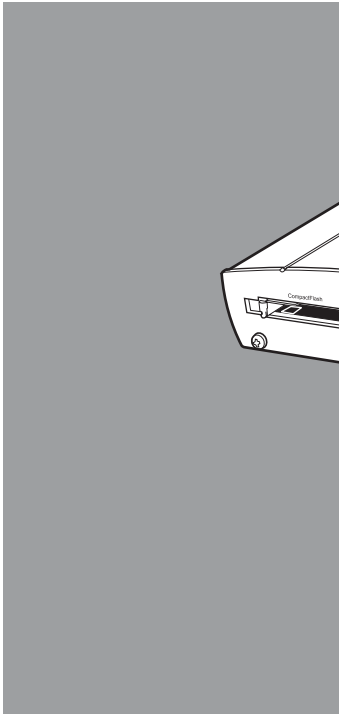




PelcoNet™ NET350
MULTIMEDIA TRANSMISSION VIA NETWORK

QUICK START GUIDE

C2907M-QS (09/03)



BEFORE YOU BEGIN

Installation of PelcoNet NET350 requires support from your network administrator. Contact your administrator to assist with STEP 2A – Configuring PelcoNet Using HyperTerminal. Write down the following information from your network administrator:

1. A unique IP address for each NET350 unit

____.____.____.____. ____.____.____.____.

2. The subnet mask for each IP address

____.____.____.____. ____.____.____.____.

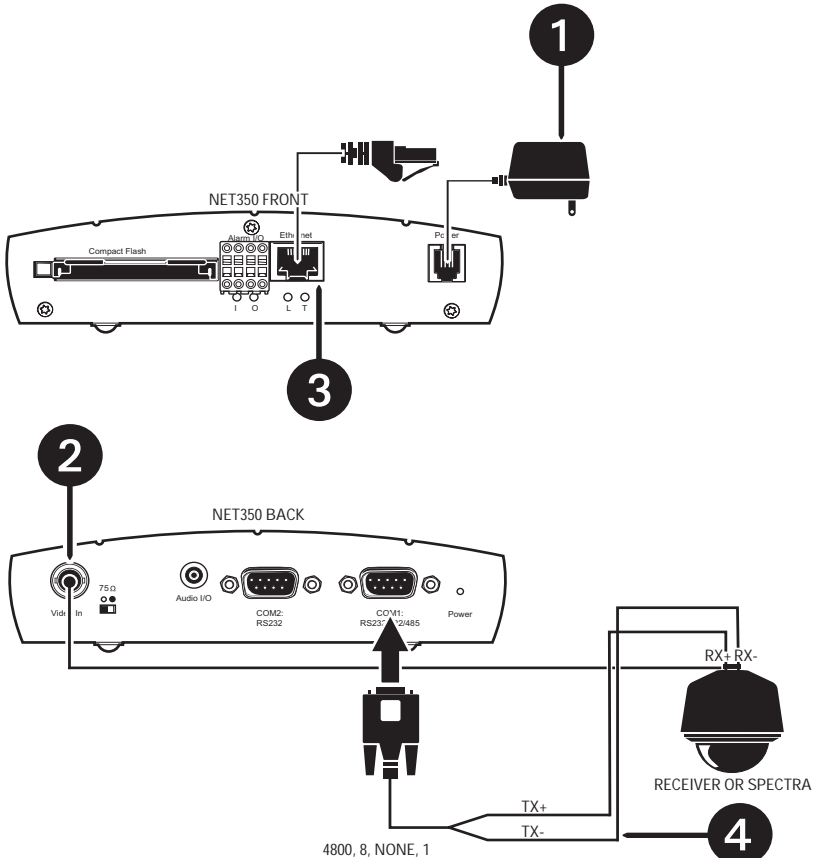
3. The default gateway for each address

____.____.____.____. ____.____.____.____.

STEP 1A

CONNECTING THE TRANSMITTER — NET350T

1. Plug in the supplied power adapter to power-up the PelcoNet. Be sure to use the correct power supply adapter (configure if needed).
2. Attach a camera to the Video In connector.
3. Connect a network cable to the Ethernet port.
4. (Optional) Connect the COM1: RS232/422/485 port with a serial cable to any controllable devices (for example, Genex® multiplexer, System 9760®, Spectra® dome).

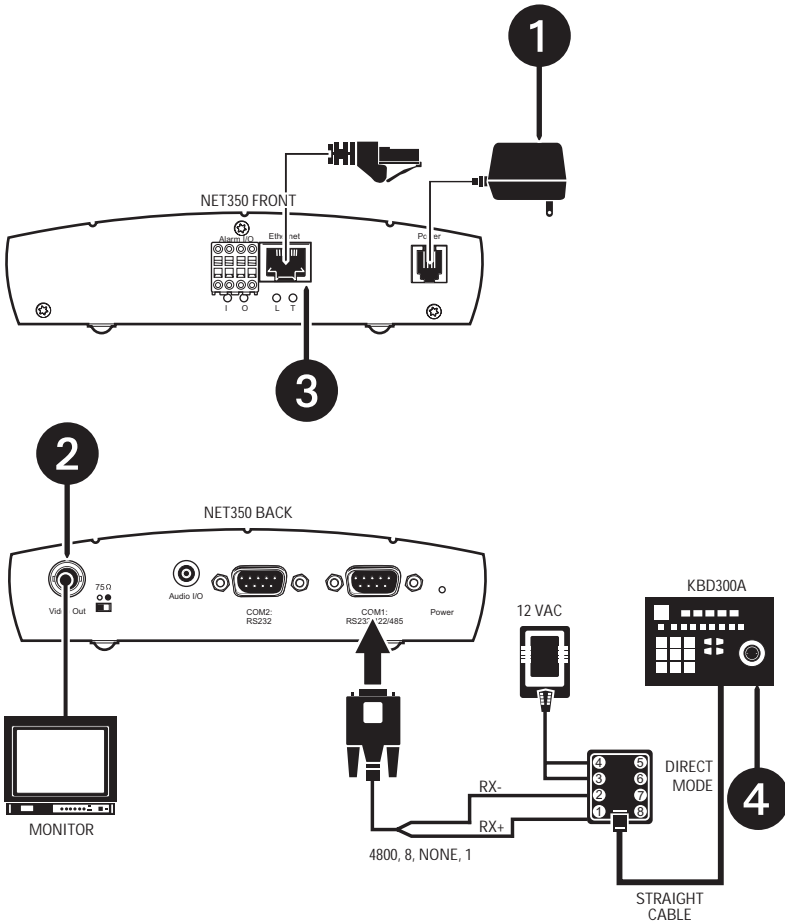


STEP 1B

CONNECTING THE RECEIVER — NET350R

NOTE: Skip this step if a receiver will not be used.

1. Plug in the supplied power adapter to power-up the PelcoNet. Be sure to use the correct power supply adapter (configure if needed).
2. Attach a monitor to the Video Out connector.
3. Connect a network cable to the Ethernet port.
4. (Optional) Connect the COM1: RS232/422/485 port with a serial cable to a keyboard (for example, KBD4000, CM9760-KBD, KBD300A).

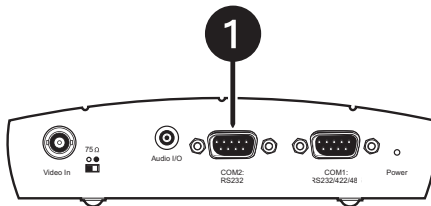


STEP 2A

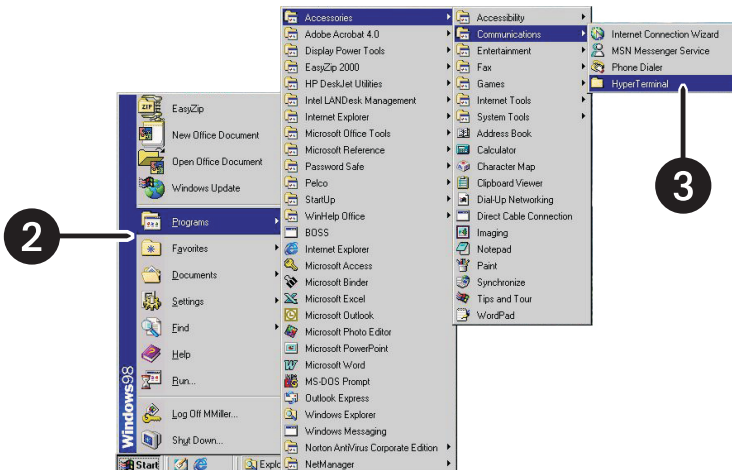
CONFIGURING THE NET350 USING HYPERTERMINAL

NOTE: If you do not want to configure PelcoNet using HyperTerminal or NET-Manager, refer to the PelcoNet NET350 manual for instructions on configuring PelcoNet using a web browser.

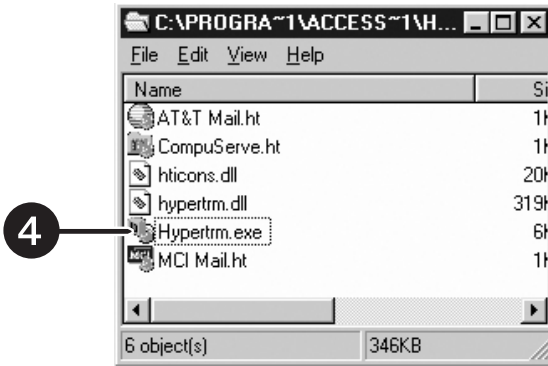
1. Connect a null modem RS232 serial cable from your computer's COM port to the COM2: RS232 port on the NET350's back panel.



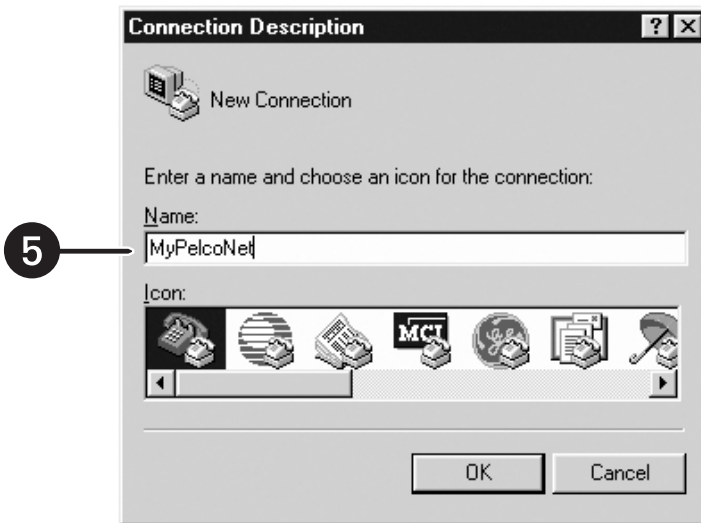
2. Click the **Start** button on the desktop, and then select **Programs** from the Start menu.
3. Highlight **Accessories**. Highlight **Communications**. Click **HyperTerminal**.



4. If using Windows® 2000, NT, or XP, skip to Step 5. Otherwise, double-click **Hypertrm.exe**. This opens the HyperTerminal application.



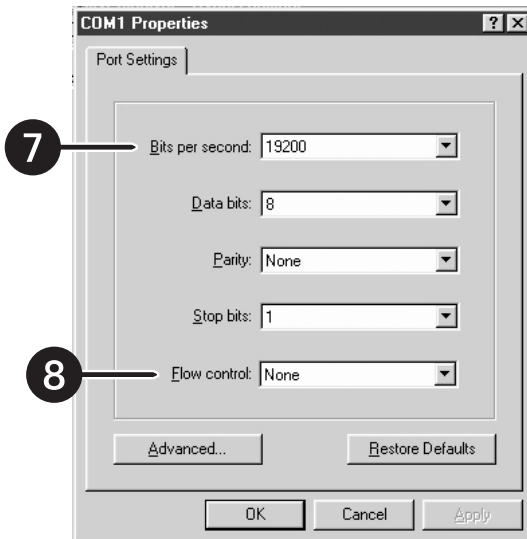
5. Type the name for the new connection in the **Name** field. Click **OK**.



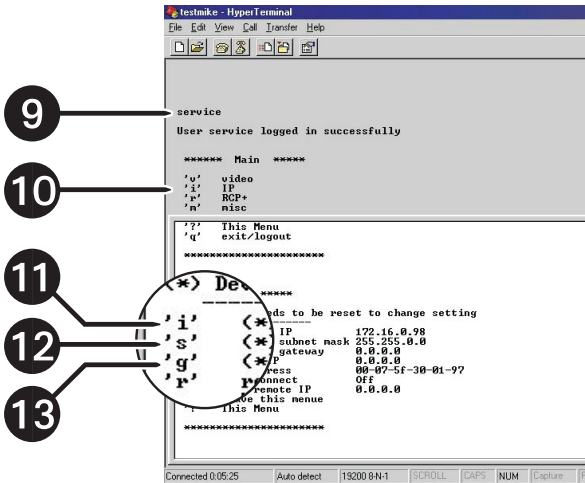
6. Change the **Connect using** field to the COM port of the computer to which you have connected the serial cable. Click **OK**.



7. Change the **Bits per second** field to **19200**.
8. Change the **Flow control** field to **None**. Click **OK**.



9. You are now ready to configure PelcoNet. Type **service** (lowercase). Press **Enter**. This brings up the menu.
10. Press the **i** key to access the IP menu.
11. Press the **i** key again to set the IP address. Type the new IP address PelcoNet will be using on the network. Press **Enter**.
12. Press the **s** key to set the subnet mask. Type the new subnet mask. Press **Enter**.
13. Press the **g** key to set the gateway IP address. Type the new gateway IP address. Press **Enter**.



14. Close HyperTerminal. If prompted to save the settings, click **OK**.

STEP 2B

CONFIGURING THE NET350 USING NET-MANAGER

NOTE: If you do not want to configure PelcoNet using HyperTerminal or NET-Manager, refer to the PelcoNet NET350 manual (C2907M) for instructions on configuring PelcoNet using a web browser.

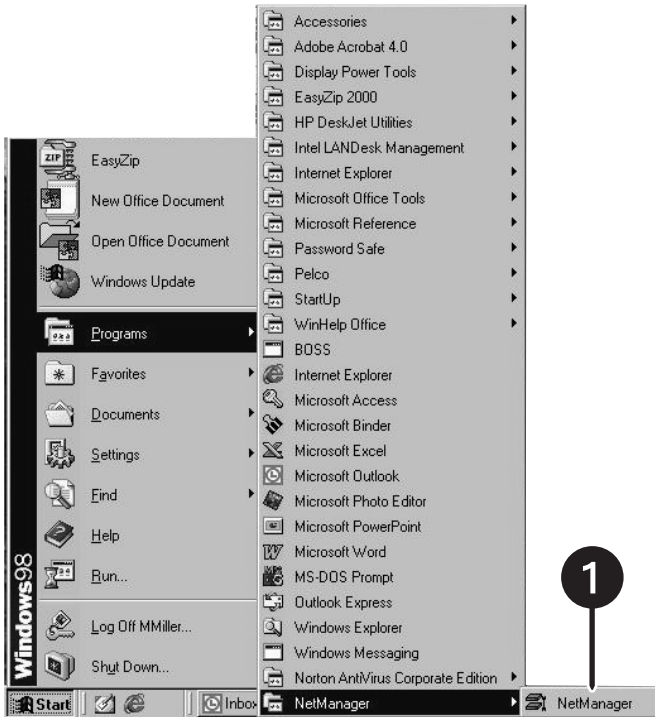
INSTALLING NET-MANAGER

1. Insert the PelcoNet Resource CD in your PC's CD drive. The PelcoNet Installation and User Guide appears after a short interval.
2. Click **NET350**. A list of programs you can install is displayed.
3. Click **Install Net-Manager**. The NET-Manager Setup Welcome screen appears.
4. Follow the on-screen installation instructions.
5. Click **Finish** when you are prompted to complete the installation. NET-Manager is now installed.
6. Click **Back** and then click **Exit** to leave the installation program. Remove the CD.

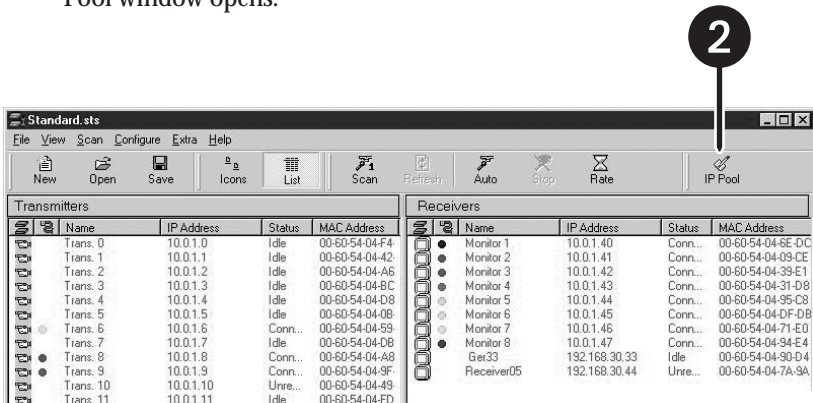
CREATING THE IP POOL

To change existing IP addresses, you first must create a pool of IP addresses.
To do so:

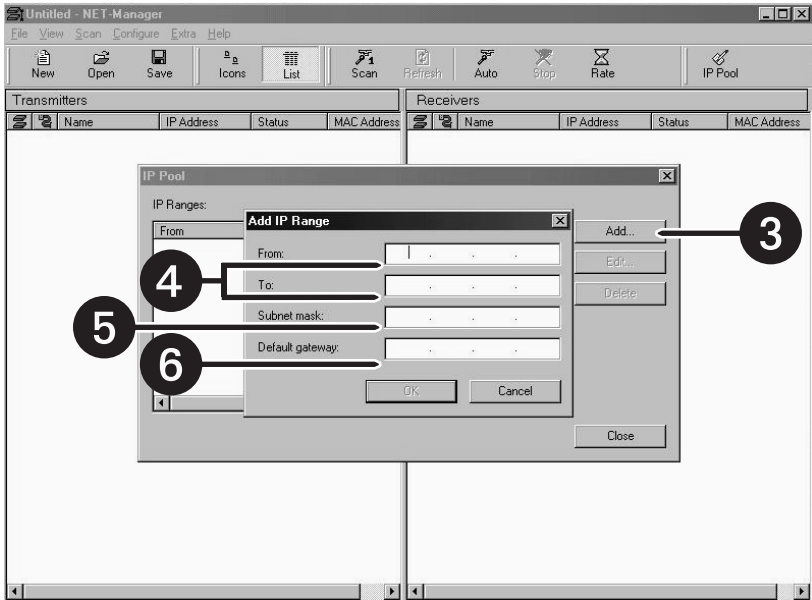
1. Click NetManager in the Windows Start menu to start the program.



2. Click the **IP Pool** button in the NET-Manager view window. The IP Pool window opens.

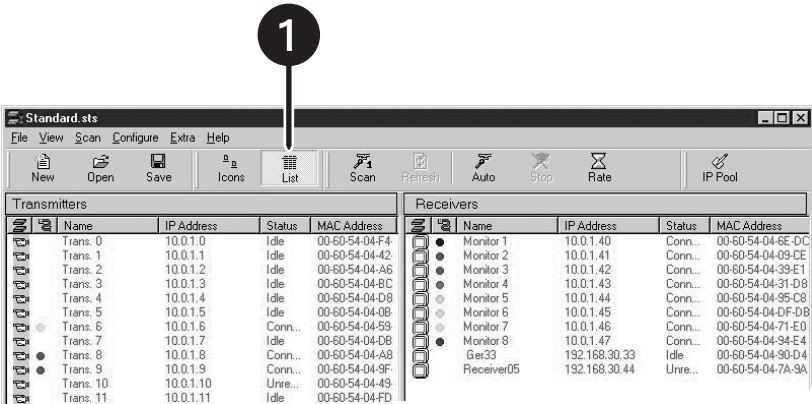


3. Click the **Add...** button to open the Add IP Range box.
4. Enter the start and end addresses of the range.
5. Enter the subset address into the subnet input mask.
6. Enter the gateway address for a gateway (if required), and then click **OK**.

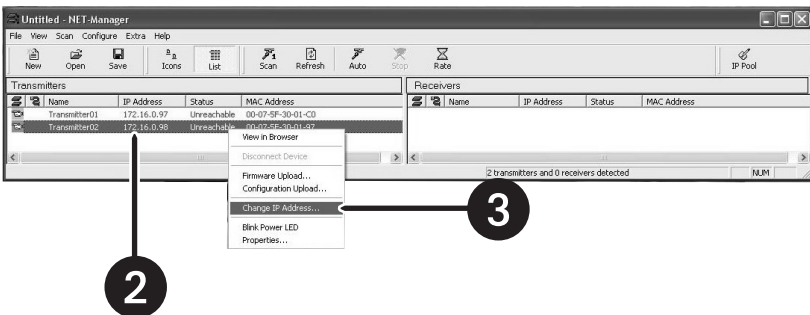


CHANGING THE IP ADDRESS

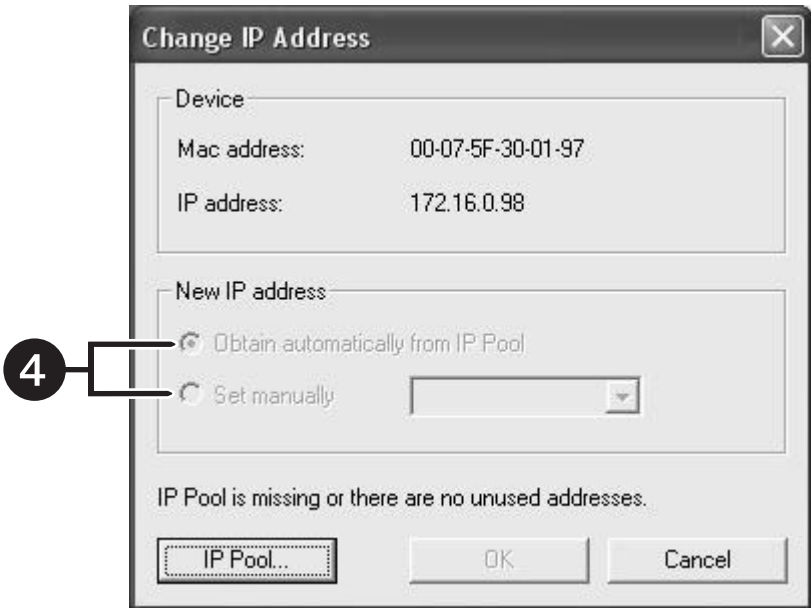
1. Click the **List** button. A list of found PelcoNet units will be displayed in the NET-Manager view window. (If NET-Manager is not already started, click **NetManager** in the Windows Start menu and then click the **Start scanning...** button in the dialog box to search the network.)



2. Move the mouse pointer onto the desired server, and then click the right mouse button. You are now ready to configure PelcoNet. (Note: an IP address must have been defined in an IP pool before it can be changed.)
3. Select **Change IP address...** in the context menu. The Change IP Address window opens.



4. Do one of the following:
 - a. Click the **Obtain automatically from IP Pool** option if you want NET-Manager to assign the new IP address. The NET350 will receive the first free address from the IP pool (lowest sequence of numbers).
 - b. Click the **Set manually** option if you want to select an IP address yourself, and then pick the address from the list.



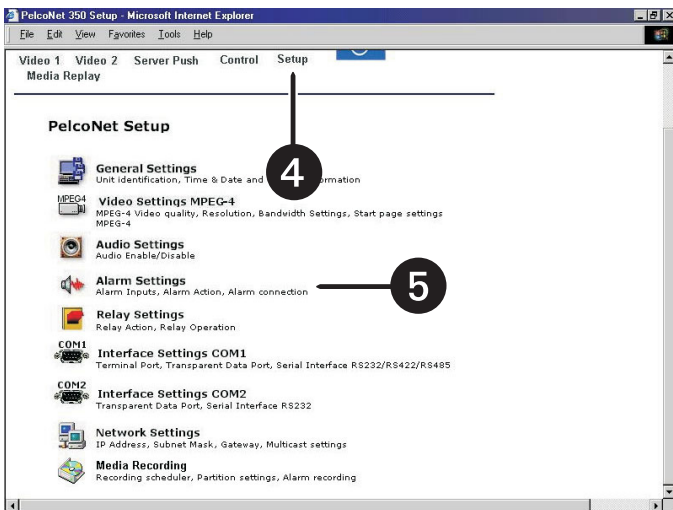
5. Click the **IP Pool...** button if you want to edit the IP pool.
6. Click **OK** to implement the change of IP address. The window closes and the new IP address appears in the view window.

STEP 3

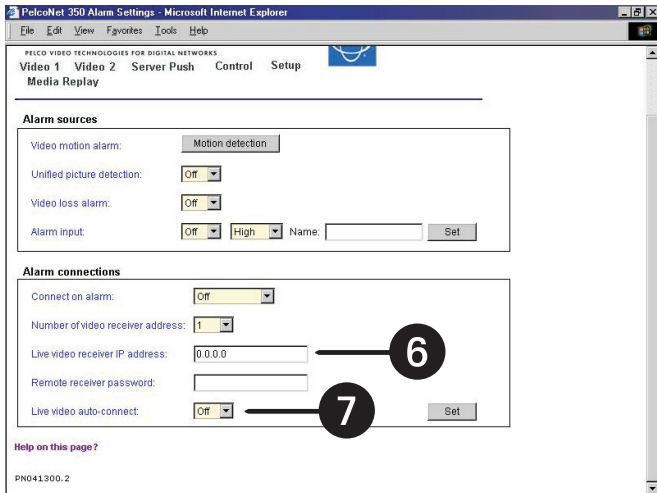
FINAL CONNECTION SETTINGS

If you changed the transmitter and receiver IP addresses in STEP 2, then use the new addresses to connect to the units. Also use the new addresses to make changes to any settings. If no changes were made to the IP addresses in STEP 2, use the default address for the transmitter (10.0.0.1) and the default address for the receiver (10.0.0.2).

1. Install Internet Explorer 6.0 (if you have not already done so) from the CD supplied with PelcoNet NET350 on to a computer connected to the network.
2. Open Internet Explorer 6.0.
3. Type the *receiver's* IP address in the address field, and then press **Enter** to connect to the receiver.
4. Click the **Setup** icon.
5. Click **Alarm Settings** to bring up the Alarm Settings page.



6. Type the *transmitter's* IP address in the **Live video receiver IP address** box. Click **Set**.
7. Set **Live video auto-connect** to On. Click **Set**.



8. Installation is now complete. (Note, however, that you must install the ActiveX® platform in order to view live video on the browser. Refer to the NET350 manual for instructions.)



3500 Pelco Way • Clovis, CA 93612-5699 USA

North America and Canada

Tel (800) 289-9100 • FAX (800) 289-9150

International

Tel +1(559) 292-1981 • FAX +1(559) 348-1120

www.pelco.com

© Pelco, the Pelco logo, Spectra, Genex and System 9760 are registered trademarks of Pelco.

© Windows and ActiveX are registered trademarks of Microsoft Corporation.

™PelcoNet is a trademark of Pelco.

© Copyright 2003, Pelco. All rights reserved.

Free Manuals Download Website

<http://myh66.com>

<http://usermanuals.us>

<http://www.somanuals.com>

<http://www.4manuals.cc>

<http://www.manual-lib.com>

<http://www.404manual.com>

<http://www.luxmanual.com>

<http://aubethermostatmanual.com>

Golf course search by state

<http://golfingnear.com>

Email search by domain

<http://emailbydomain.com>

Auto manuals search

<http://auto.somanuals.com>

TV manuals search

<http://tv.somanuals.com>