

# ADDENDUM

**Addendum No.:** C1577M-A

**Date:** August 4, 2004

**Manuals Affected:** CM9760 Series Manuals – **C538M, C539M-A, C540M-B, C541M-C, C542M-B, C543M-A, C544M, C549M-A, C572M, C573M-D, C578M, C579M, C1501M, C1503M, C1510M-QS, C1510M-A, C1520M-B, C1528M-C, C1940M, C1941M, C1942M, and C1943M**

**Manual Update:** The CM9760-CC1 has been replaced with the CM9700-CC1 and the CM9760-MGR management software has been replaced with the CM9700-MGR management software.

Keep the following in mind when referring to the instructions contained in these manuals:

- The CM9700-CC1 contains the latest CC1 software (version 9.01 or higher), and is programmed with the new CM9700-MGR management software.
- Despite the difference in model numbers, the CM9700-CC1 functions the same as the CM9760-CC1 and most of the information in these manuals applies to version 9.01 (or higher) CPU.
- You can add the CM9700-CC1 to an existing CM9760 system if you upgrade the existing CM9760-CC1 units with the current software (version level 9.01 or higher).

Software version 9.01 requires a minimum of 16 MB of RAM in the CPU. If required, you can upgrade the RAM in older CM9760-CC1 units using the software upgrade kit appropriate for your CPU.

- Do not use the CM9760-MGR instructions contained in these manuals. Refer to the CM9700-MGR Getting Started Software Guide, on-screen help, or Online Help for instructions.

 Green The materials used in the manufacture of this document and its components are compliant to the requirements of Directive 2002/95/EC.



**Pelco World Headquarters** • 3500 Pelco Way, Clovis, California 93612-5699 USA • [www.pelco.com](http://www.pelco.com)  
**USA & Canada:** Tel: 800/289-9100 • Fax: 800/289-9150  
**International:** Tel: 1-559/292-1981 • Fax: 1-559/348-1120



# CM9760-SAT QUICK START REFERENCE GUIDE FOR:

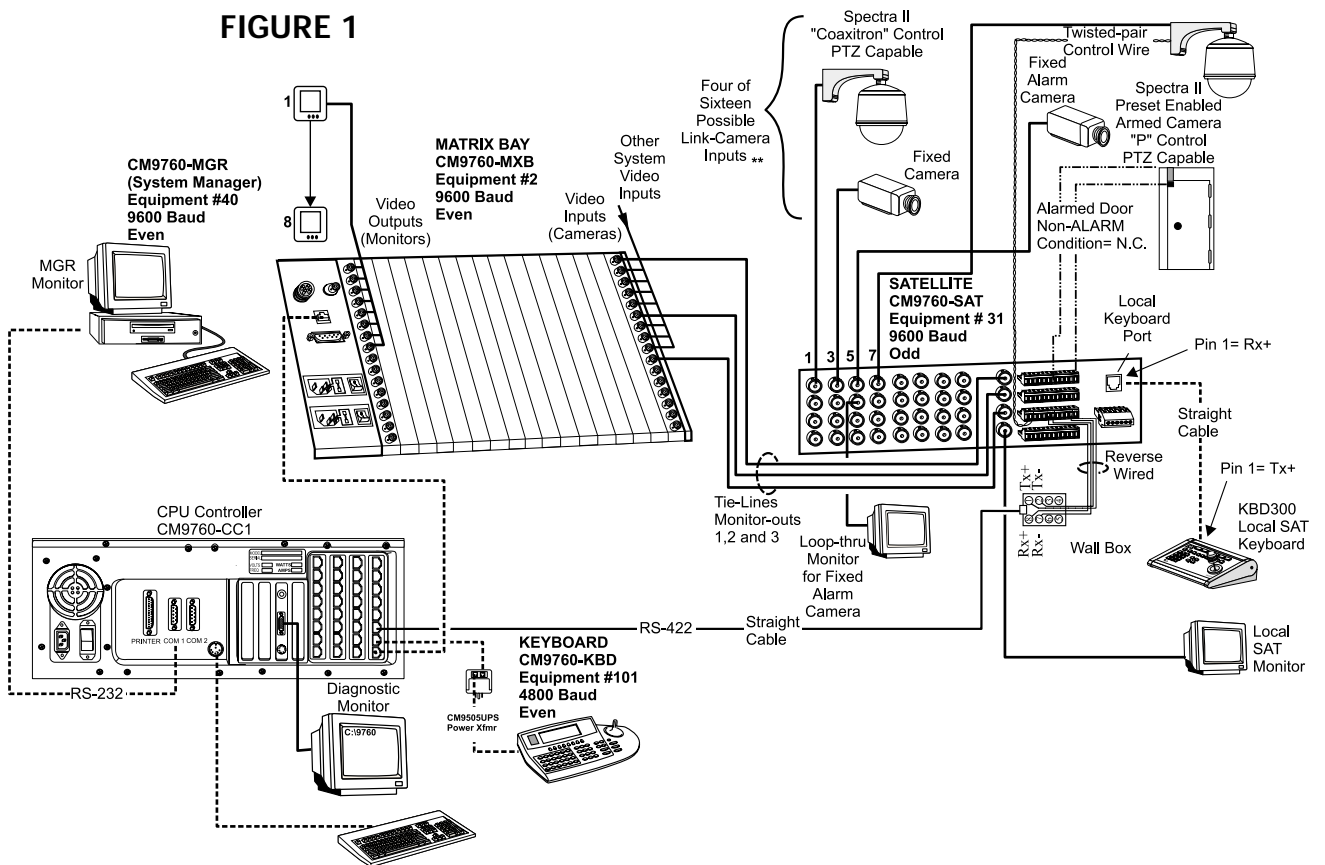
- the 9760-SAT physical interface
- setup parameters for SAT programming from the 9760-KBD
- alarm implementation issues

## CONNECT

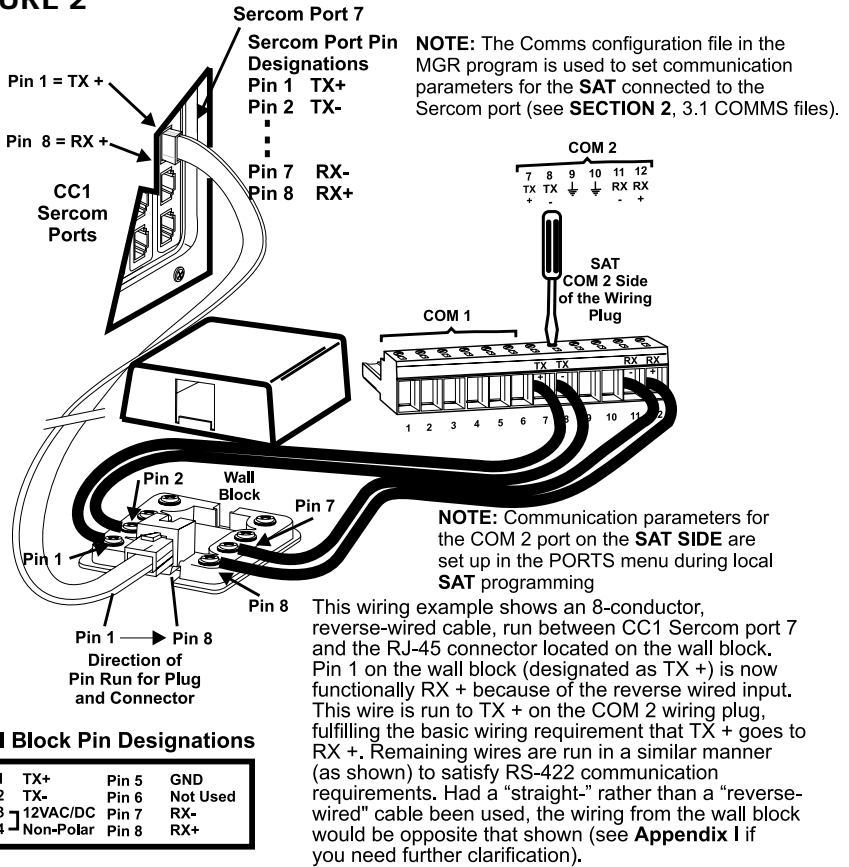
### THE CC1 TO THE SAT (RS-422)

Figure 1 shows a CM9760-SAT connected to a 9760 system. Of particular interest are the COMM and tie line connections. The COMM connection shown in Figure 1 is the line between port 7 on the CC1 and the COM 2 connection on the SAT. This is detailed in Figure 2.

FIGURE 1



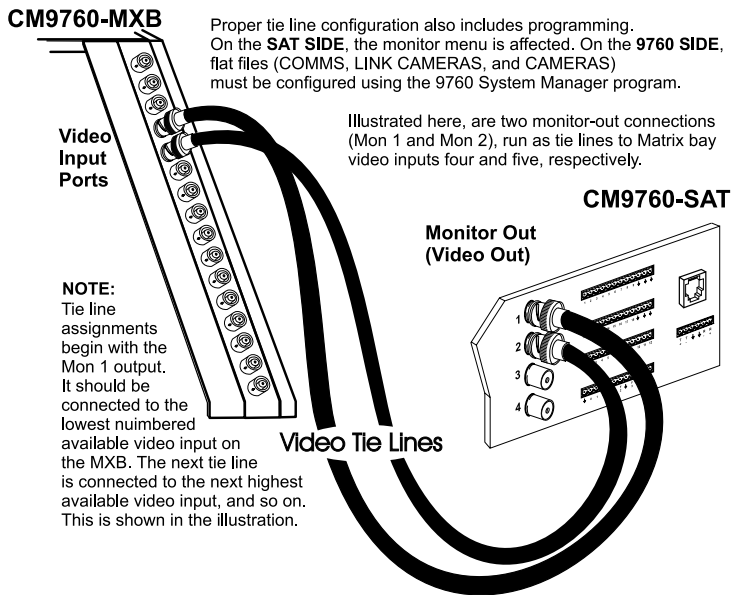
**FIGURE 2**



**THE CC1 TO THE SAT (TIE LINES)**

Tie lines (a minimum of one, a maximum of four) are connected in sequential, ascending order to monitor-outs on the SAT. Don't skip around. Use Figure 3 as a guide.

**FIGURE 3**



# SETUP

## PARAMETERS FOR SAT PROGRAMMING

In order to program and operate the SAT from the 9760-KBD, some preparatory groundwork must be laid by programming the following 9760 configuration files: the Comms, Camera and Link Camera files. Use Figures 4, 5 and 6, respectively, as guides. These are essentially the only files that need to be programmed on the 9760 SIDE for basic SAT operation.

FIGURE 5

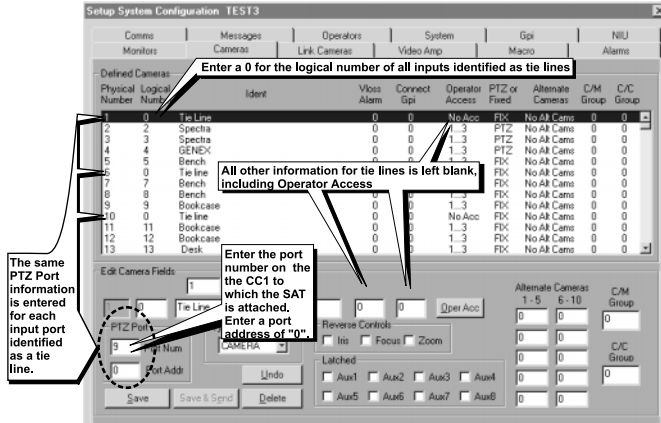


FIGURE 4

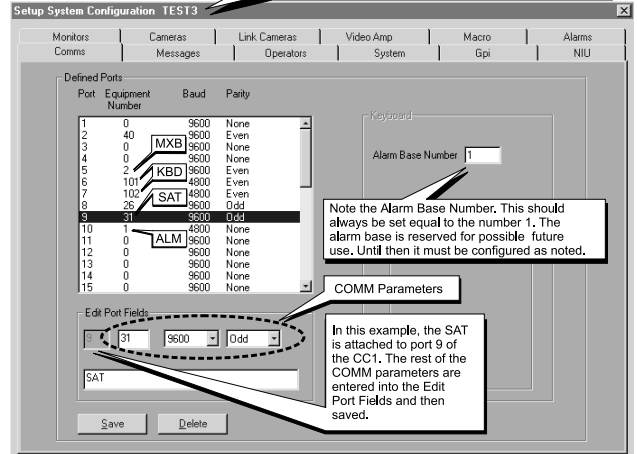
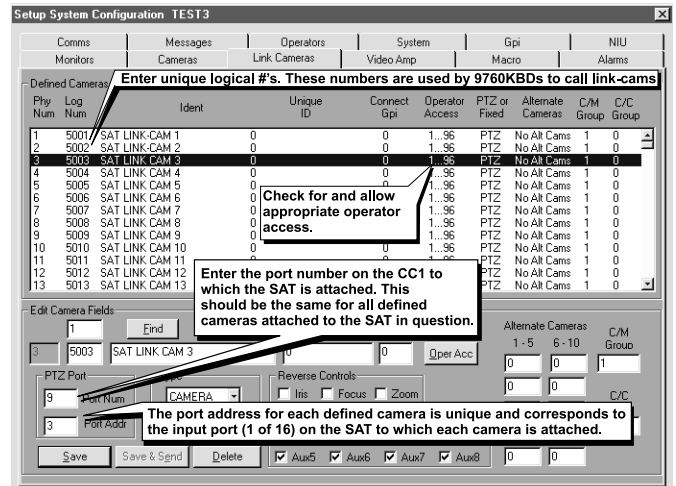


FIGURE 6



## SAT MENU ACCESS FROM THE 9760-KBD

Programming SAT menus using a KBD200, 300 or 300V is the preferred method (it's easier and faster); otherwise, the 9760-KBD can be used. To access the SAT Main menu screen from the 9760-KBD requires that:

- the programming files listed in SETUP be configured and loaded
- the CC1 is initialized and the COMM link between the CC1 and SAT is active
- at least one tie line is physically connected between the SAT and CC1

Next, ensure no one else (9760 SIDE) is using an SAT tie line.

Then:

1. Call up any link camera programmed in the Link Camera file of the MGR (see Figure 6). Use the associated logical number for the camera.

NOTE: It is not necessary for the Link camera called to actually be connected to the SAT at this time. All that is happening here is that you, as the operator, are "isolating" a video tie line for the display transfer of the SAT menu to a 9760 monitor.

2. Press the or the key, then press the DEF key. If this is the first time accessing that menu, enter the default PIN (1234).
3. Enter 89 in the keypad and press the PRST key (while still in the DEF menu). The main SAT programming menu will appear on the monitor in front of you. You may now proceed to program the SAT.

# ALARM IMPLEMENTATION ISSUES








(if needed, reference the attached Default SAT Menu Settings Sheet)

Alarm programming involves configuring SAT Monitor and Alarm menus and, possibly, some 9760 System configuration files. If you program alarm functions without regard to the status of the monitor-out lines on the SAT, you are going to get into trouble. There is only one source of alarms on the SAT: the physical actuation of a relay input, going from its non-alarm to its alarm state. On the other hand, there are three alarm-reporting destinations possible and each destination is dependent on associated programming configurations. In one, the alarm is seen and acted upon by the LOCAL SAT only. In another, the alarm is seen and acted upon by the 9760 System only. Finally, the alarm can be seen and acted upon by both the LOCAL SAT and the 9760 System at the same time.

## LOCAL ONLY

For LOCAL SAT alarm viewing and reporting, at least one monitor-out line on the SAT must be configured as LOCAL and, connected to it, there should be a physical monitor for viewing purposes.

For the monitor connected to the monitor-out line just referenced, do the following:








In the SAT menus listed below	Do the following
<b>MONITOR MENU</b>  Set ALM TYPE to AUTO or MAN  Set VIEW to LOCAL  In the ALARM ENABLE sub-menu: <i>enable</i> alarms to be viewed	
<b>ALARM MENU</b>  For the alarm inputs desired, choose an activation TYPE ( N.O. or N.C.)  ARM the alarm in the LOCAL column*  Assign a preset # (PRE) if the alarm camera is preset capable and you want a preset called  Make sure the System Alarm columns are zeroed-out.	
	<i>* Remember, ALM 1 calls SAT camera 1, ALM 2 calls SAT camera 2, and so on.</i>

For each destination to be programmed, Pelco recommends that you not stray outside the guidelines outlined below for programming the various menus until you are quite familiar with the ramifications of doing so. Improper programming can lead to unexpected (but not uncorrectable) results that might lead you to believe that your equipment isn't operating properly. This built-in alarm reporting flexibility allows for a more versatile, dynamic, alarm environment. The trade-off is that you must be observant when configuring the menus.

## SYSTEM ONLY

For 9760 SIDE alarm viewing and reporting, at least one monitor-out line on the SAT must be configured as a TIE LINE and it should be connected to a video input line on the CM9760-MXB for viewing purposes.

For the monitor-out line just referenced as a tie line, do the following:

In the SAT menus listed below	Do the following
<b>MONITOR MENU</b>  Set ALM TYPE to OFF  Set VIEW to TIE LINE  In the ALARM ENABLE sub-menu, disable all alarms	
<b>ALARM MENU</b>  For the alarm inputs desired, choose an activation TYPE (N.O. or N.C.)  DIS-ARM (- -) all alarms in the LOCAL ARM column  Zero-out all presets  Enter a physical alarm # (as configured in the 9760-CC1) in the SYSTEM ALARMS column. *	
	<i>* This is the alarm that will be triggered on the CM9760-CC1.</i>

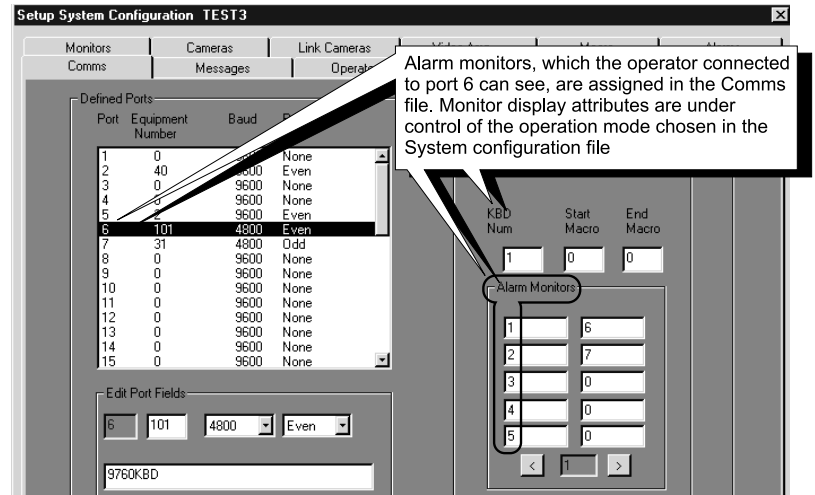
➡ **SYSTEM ONLY** (Continued)

System-only implementation of alarms also requires that configuration files be programmed on the 9760 SIDE of the configuration. In the Systems Configuration file, specify an Alarm Control Mode of operation.

More importantly, in the Comms Configuration file:

➡ Assign alarm monitors for the 9760 operator to view alarms on.

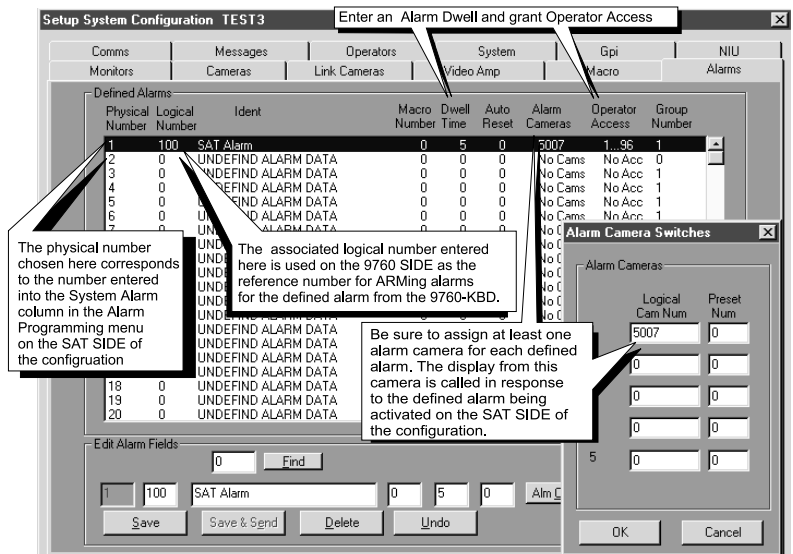
**FIGURE 7**



**FIGURE 8**

Of equal importance is the CC1 Alarms file:

➡ Fill in the alarm information fields opposite the physical alarm # that matches the System Alarm # entered in the contact menu of the SAT Alarms file (see the SYSTEM ALARMS column reference under SYSTEM ONLY in the SAT Alarm Menu).

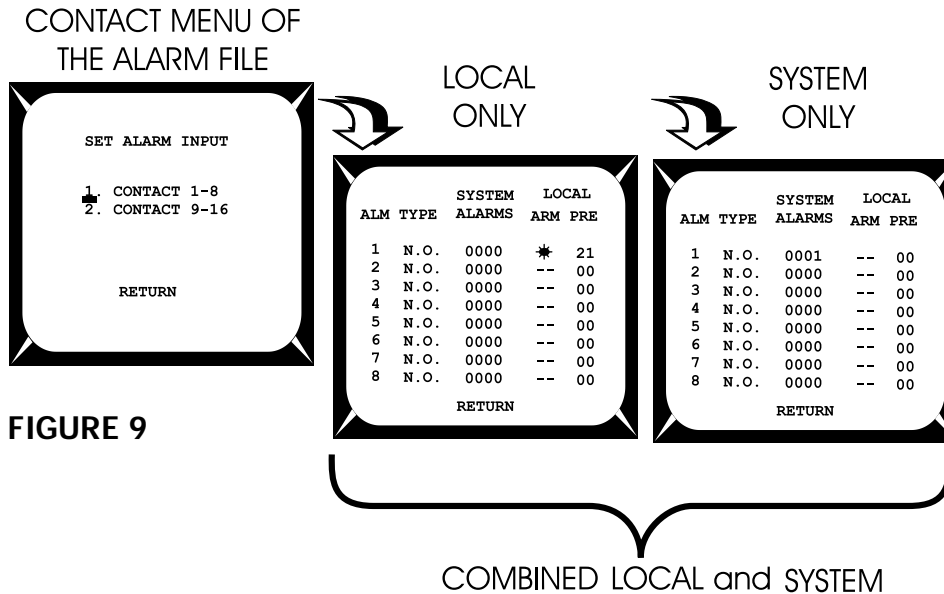


## COMBINED LOCAL AND SYSTEM

Here, you need to pay close attention to the specific monitor-out line you are setting menu attributes for. For all monitor-outs connected to a *LOCAL* monitor, assign *Monitor menu attributes* just as they were listed and discussed under LOCAL ONLY.

For all monitor-outs configured as a *TIE LINE*, assign *Monitor menu attributes* just as they were listed and discussed under SYSTEM ONLY.

The difference between LOCAL ONLY and SYSTEM ONLY as opposed to COMBINED or shared alarm implementation appears when the menu attributes in the Contact menu of the SAT ALARM file are assigned. It is here that we accommodate both LOCAL and SYSTEM alarm activation at the same time. This can best be seen in a side-by-side comparison of the menus for the three states of alarm activation.



**FIGURE 9**

To complete alarm implementation for the combined example, you must carry through the System Alarm portion of the menu settings in the same manner that was done for System Alarm Only. That is, configure the 9760 CC1 configuration menus (System, Comms, and Alarm files), just as they were listed and discussed under SYSTEM ONLY.

ALM	TYPE	SYSTEM ALARMS	LOCAL ARM PRE
1	N.O.	0001	* 21
2	N.O.	0000	-- 00
3	N.O.	0000	-- 00
4	N.O.	0000	-- 00
5	N.O.	0000	-- 00
6	N.O.	0000	-- 00
7	N.O.	0000	-- 00
8	N.O.	0000	-- 00
RETURN			

# SAT DEFAULT MENU SETTINGS

```

PELCO VIDEO SWITCHER
MODEL CM9760-SAT V1.03
SELECT:
1. CAMERAS
2. MONITORS
3. TIME/DATE
4. ALARMS
5. PORTS
6. AUXILIARIES
7. PASSWORD
8. ACCESS
9. EXIT
    
```

```

CAMERA 01

CAMERA TITLE
CAM1

RX TYPE: EXT COAXITRON

RETURN
    
```

Same settings for each of the sixteen cameras

```

MONITOR 01

ALARM TYPE: OFF
ALARM DWELL: 02
DISPLAY: ★
T/D DISPLAY: --
VIEW: TIE LINE

1. CAMERA SEQUENCE
2. ALARM ENABLE
3. POSITION DISPLAY

RETURN
    
```

Same settings for each main monitor screen (1-4)

```

MONITOR 01 SEQUENCE MENU
ENTRY 1-8      ENTRY 9-16
CAM DWL PRE   CAM DWL PRE
01 02 00     09 02 00
02 02 00     10 02 00
03 02 00     11 02 00
04 02 00     12 02 00
05 02 00     13 02 00
06 02 00     14 02 00
07 02 00     15 02 00
08 02 00     16 02 00

RETURN
    
```

Sequence screen the same for each of the four monitors

```

ACCESS

1. KEYBOARD TO MONITOR
2. MON TO CAMERA 1-10
3. MON TO CAMERA 11-16
   OVERRIDE: LOCAL

RETURN
    
```

```

SET TIME / DATE

DATE: JAN-01-00
TIME: 12:00:00 AM
STYLE: MMM-DD-YY
TYPE: 12 HOUR

SET CLOCK
    
```

Alarm enable screen the same for each of the four monitors

```

MONITOR 01 ALARM ENABLE

ALM SET ALM  SET ALM SET
1  -- 7  -- 13  --
2  -- 8  -- 14  --
3  -- 9  -- 15  --
4  -- 10 -- 16  --
5  -- 11 --
6  -- 12 --

RETURN
    
```

```

KBD TO MONITOR ACCESS

KBD MONITOR  PRESET
   1 2 3 4  ENABLE
1  Y Y Y Y  Y
2  Y Y Y Y  Y
4  Y Y Y Y  Y
5  Y Y Y Y  Y
6  Y Y Y Y  Y
7  Y Y Y Y  Y
8  Y Y Y Y  Y

RETURN
    
```

```

SET ALARM INPUT

1. CONTACT 1-8
2. CONTACT 9-16

RETURN
    
```

```

SYSTEM LOCAL
ALM TYPE ALARMS ARM PRE
1 N.O. 0000 -- 00
2 N.O. 0000 -- 00
3 N.O. 0000 -- 00
4 N.O. 0000 -- 00
5 N.O. 0000 -- 00
6 N.O. 0000 -- 00
7 N.O. 0000 -- 00
8 N.O. 0000 -- 00

RETURN
    
```

Contact settings for 1-8. Settings for 9-16 are the same

```

MONITOR TO CAMERA ACCESS

MON CAMERA
  1 2 3 4 5 6 7 8 9 10
1  Y Y Y Y Y Y Y Y
2  Y Y Y Y Y Y Y Y
3  Y Y Y Y Y Y Y Y
4  Y Y Y Y Y Y Y Y

RETURN
    
```

```

PORTS

1. COM1 PORT
2. COM2 PORT

RETURN
    
```

```

COM 1
SET PORT

PROTOCOL 422P
BAUD RATE 2400

RETURN
    
```

These are the port settings for the connection to the CM9760-CC1

```

MONITOR TO CAMERA ACCESS

MON CAMERA
 11 12 13 14 15 16
1  Y Y Y Y Y Y
2  Y Y Y Y Y Y
3  Y Y Y Y Y Y
4  Y Y Y Y Y Y

RETURN
    
```

```

SET AUXILIARY MENU

AUX SOURCE MODE
F1 ALM ---
F2 KBD KEY
F3 KBD LAT

RETURN
    
```

```

COM 2
SET PORT

BAUD RATE 9600
PARITY ODD
STOP BITS 1

RETURN
    
```





Pelco

3500 Pelco Way

Clovis, CA 93612-5699 USA

In North America and Canada

Tel (800) 289-9100 • FAX (800) 289-9150

International Customers

Tel +1(559) 292-1981 • FAX +1(559) 348-1120

[www.pelco.com](http://www.pelco.com)

## Free Manuals Download Website

<http://myh66.com>

<http://usermanuals.us>

<http://www.somanuals.com>

<http://www.4manuals.cc>

<http://www.manual-lib.com>

<http://www.404manual.com>

<http://www.luxmanual.com>

<http://aubethermostatmanual.com>

Golf course search by state

<http://golfingnear.com>

Email search by domain

<http://emailbydomain.com>

Auto manuals search

<http://auto.somanuals.com>

TV manuals search

<http://tv.somanuals.com>