

ULTRA FOCUS 6000

polkaudio®

ACTIVE NOISE CANCELING HEADPHONES

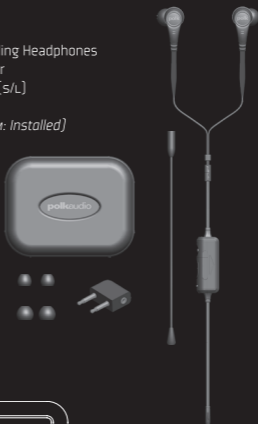
ULTRAFOCUS 6000 QUICK FIT GUIDE

WHAT'S IN THE BOX

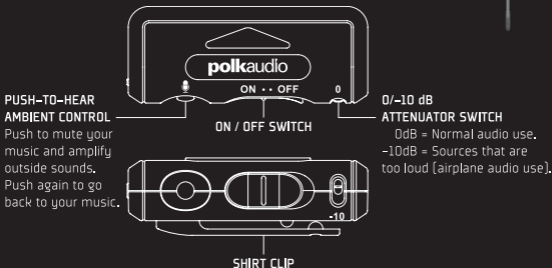
- One Pair UltraFocus 6000 Active Noise Canceling Headphones with 56" Cable (142.2cm) & In-Line Controller
- Two Pairs StayFit™ 3-Flange Silicone Eartips (S/L)
- Two Pairs Memory Foam Eartips (S/L)
- Three Pairs StayFit Silicone Eartips (S/M/L) (M: Installed)
- Nokia® Connection Adaptor
- Airline Adaptor
- Protective Case

Not pictured:

- Shirt Clip
- AAA Battery (1)
- Quick Fit Guide
- Owner's Manual
- Online Registration



USING THE IN-LINE CONTROLLER



**ACTIVE NOISE
CANCELING
HEADPHONES****ULTRAFOCUS 6000 QUICK FIT GUIDE**

IMPORTANT: When you are using UltraFocus headphones, Active Noise Canceling is on at all times and cannot be turned off. Batteries must be installed for the headphones to deliver sound.

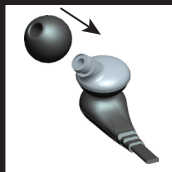
REPLACING THE BATTERY**LOW BATTERY INDICATOR**

The battery indicator will shine blue when the battery is fully charged. When the battery needs to be replaced, the indicator will change color, alternating from blue to red.

IMPORTANT: UltraFocus 6000 headphones have a left and right orientation. They use the letters "L" and "R" to indicate which earpiece goes in which ear.

INSTALLING THE EARTIPS

Find the eartip that best fits your ear size.



Free Manuals Download Website

<http://myh66.com>

<http://usermanuals.us>

<http://www.somanuals.com>

<http://www.4manuals.cc>

<http://www.manual-lib.com>

<http://www.404manual.com>

<http://www.luxmanual.com>

<http://aubethermostatmanual.com>

Golf course search by state

<http://golfingnear.com>

Email search by domain

<http://emailbydomain.com>

Auto manuals search

<http://auto.somanuals.com>

TV manuals search

<http://tv.somanuals.com>