

**CSi25**  
Center Channel Loudspeaker

**Owner's  
Manual**

**polkaudio®**

## POLK AUDIO HISTORY—A PASSION FOR SOUND

Polk Audio was founded in Baltimore in 1972 by Johns Hopkins University graduates Matthew Polk and George Klopfer. Today, Polk Audio is a leading international manufacturer of high quality home, car and multimedia loudspeakers. Polk products emphasize superior sound and build quality, and feature many patented and award-winning innovations. Polk Audio has built a reputation as “The Speaker Specialists.” Polk products are sold throughout the USA, Canada and in over 50 countries around the world. Polk Audio’s mission has always been to build high quality, great sounding speakers at affordable prices. For the people of Polk Audio, building speakers is not just a job; it’s a *passion*.

### PLACEMENT RECOMMENDATIONS FOR THE CSi SERIES CENTER CHANNEL LOUDSPEAKER

The CSi Series Center Channel Loudspeaker incorporates the most effective magnetic shielding available so it can be placed safely on or near your TV or video monitor. If you notice video distortion or discoloration, immediately move the speaker away from the TV and call Polk Audio Customer Service 800-377-7655 (9AM to 6PM EST, US or Canada) or polkcs@polkaudio.com. The most popular placement for a center channel speaker is on top of your TV, anchoring the dialogue and effects to the screen [figure 1]. An alternate placement is on a shelf below your TV [figure 1]. If you are using a front projection TV system, place the center channel speaker on a small stand or table immediately below the bottom of the projection screen, or at ear level behind the screen if your screen is acoustically transparent. Consult the owner’s manual for your screen. Adhesive rubber feet are included with your CSi Center Channel Loudspeaker and may be attached to the bottom of the speaker to protect your furniture and keep the speaker in place.

### SAFE LIMITS OF OPERATION

Your Polk loudspeakers are made with the highest quality materials for years of trouble-free performance. However, damage to loudspeakers can occur when an amplifier, regardless of its wattage, is made to play at higher listening levels than its power can clearly produce (usually beyond the “1 to 2 o’clock” position on the volume control). This results in very high levels of audible distortion, originating in the amplifier, that can add a harsh, gritty sound to music. Contrary to popular belief, a speaker is more likely to be damaged by trying to get too much volume from a low-powered amp or receiver than from a high powered one.

### PROCESSOR MODE CONFIGURATION FOR THE CSi SERIES CENTER CHANNEL LOUDSPEAKER

The “bass management” or “speaker configuration” menus of most surround receivers offer the choice of “normal” or “wide” modes for center channel operation. In discrete channel digital processors these modes are referred to as “small” and “large.” Normal (small) mode filters bass frequencies from the center channel speaker and sends them instead to the front left & right main speakers or to the subwoofer output (LFE) jack. Wide (large) mode sends an unfiltered, full range signal to the center channel speaker. Use the Small (normal) mode for optimum center (and surround) channel performance and reliability.

### CONNECTING YOUR CSi SERIES LOUDSPEAKER [FIGURE 2]

We recommend 16-gauge or larger speaker wire. Follow the hookup directions included with your receiver. Strip 1/2 inch (12.7mm) of insulation from each of the two conductors of the wire to expose the bare metal and twist each of the individual conductors into single unfrayed strands. Note that one of the terminals on the rear of each speaker is red (+) and the other is black (-). Make certain that you connect the wire from the red (+) terminal of your amplifier or receiver to the red (+) terminal on your speaker and the wire from the black (-) terminal of your amplifier or receiver to the black (-) terminal on your speaker. Most wire has some indicator (such as color-coding, ribbing or writing) on one of the two conductors to help you maintain consistency.

To connect wire to the binding post [figure 3], unscrew the hex nut and insert the bare wire into the hole near the base of the binding post. Do not insert the insulated part of the wire into the hole as this will not give you a good connection. Twist the hex nut back down the binding post until it firmly meets the wire. Do not over tighten.

**To use Banana Plugs (US only):** Unscrew the binding post lug nuts completely to expose the binding post plugs (plastic plugs inserted into the binding posts). Carefully pry out the binding post plugs to expose banana plug holes. Screw the lug nuts back on the binding posts and insert banana plugs. (This is for US owners only.)

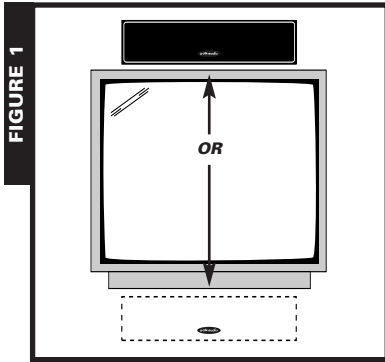


FIGURE 1

**FIGURE 1**

*Most popular placement, above the TV screen. CSI Series Center Speakers are magnetically shielded for safe placement near TV or video monitors. If you notice video distortion or discoloration, immediately move the speakers away from the video source and call Polk Audio Customer Service 800.377.7655 (US and Canada) or polkcs@polkaudio.com.*

*La ubicación más común es encima de la pantalla del televisor. Los altavoces centrales de la serie CSI tienen blindaje magnético para poder ubicarlos con seguridad cerca de monitores de televisión o de video. Si nota que hay distorsión o decoloración de la imagen, aleje inmediatamente los altavoces de la fuente de video y comuníquese con el servicio al cliente de Polk Audio.*

*Disposition la plus courante, au-dessus de l'écran. Les enceintes de la série CSI sont blindées magnétiquement et peuvent être disposées à proximité d'une télé ou d'un moniteur vidéo. Si vous percevez de la distorsion ou de la décoloration vidéo, éloignez immédiatement les enceintes de l'écran et communiquez avec le service à la clientèle de Polk.*

*Häufigste Platzierung – über dem Fernsehbildschirm. CSI-Mittellautsprecher sind für eine Platzierung in der Nähe von Fernsehgeräten oder Videomonitoren magnetisch abgeschirmt. Wenn Sie eine Verzerrung oder Verfärbung des Videobildes bemerken, sind die Lautsprecher umgehend von der Videoquelle zu entfernen. Setzen Sie sich in diesem Fall mit dem Kundendienst von Polk Audio in Verbindung.*

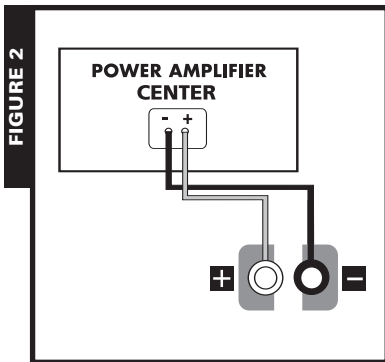


FIGURE 2

**FIGURE 2**

*Basic Center Channel Speaker hookup diagram. Set Center Channel to "small" in your receiver's Bass Management settings.*

*Diagrama básico de conexión.*

*Diagramme de branchement rudimentaire.*

*Grundlegendes Anschlussdiagramm.*

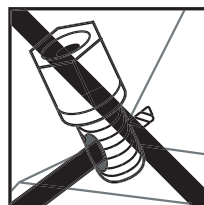
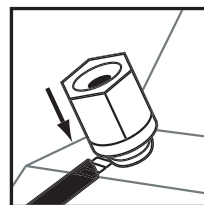
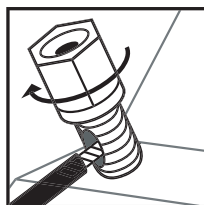
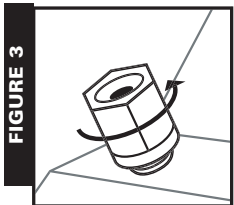


FIGURE 3

**FIGURE 3**

*Using binding post connections.*

*Uso de conexiones con tornillos de presión.*

*Utilisation des bornes de branchement.*

*Verwendung von Anschlussklemmen.*

*Loosen hex nut  
Desenrosque parcialmente la tuerca hexagonal  
Desserrer l'écrou  
Sechskantmutter lösen*

*Insert speaker wire through hole  
Inserte el alambre para la bocina en el orificio  
Insérer le fil du haut-parleur dans le trou  
Lautsprecher-Draht durch das Loch schieben*

*Tighten hex nut  
Enrosque la tuerca de nuevo  
Serrer l'écrou  
Sechskantmutter festschrauben*

*Do not insert insulated section of speaker wire  
No inserte alambre con material aislante  
Ne pas insérer la partie isolée du fil du haut-parleur  
Isolation des Lautsprecher-Drahtes nicht in das Loch schieben*

*To use Banana Plugs (US only):  
Unscrew the binding post lug nuts completely to expose the binding post plugs (plastic plugs inserted into the binding posts). Carefully pry out the binding post plugs to expose banana plug holes. Screw the lug nuts back on the binding posts and insert banana plugs.  
(This is for US owners only.)*

FOR MANUAL UPDATES, VISIT

<http://www.polkaudio.com/home/products/center/csi>

FOR MORE DETAILED HOOK UP AND PLACEMENT INFORMATION, VISIT

<http://www.polkaudio.com/home/faqad/>

FOR RECOMMENDED ACCESSORIES (INCLUDING SPEAKER STANDS, BRACKETS AND EXCLUSIVE POLK AUDIO LOGOWEAR), VISIT OUR WEBSTORE:

<http://shop.polkaudio.com/>

# polkaudio®

5601 METRO DRIVE  
BALTIMORE, MARYLAND 21215  
800-377-7655 (US & CAN, OUTSIDE US 410-358-3600)  
WWW.POLKAUDIO.COM

**"Polk Audio," "The Speaker Specialists," "Dynamic Balance" and "Acoustic Resonance Control" are registered trademarks of Polk Investment Corporation used under license by Polk Audio Incorporated.  
"Polk Audio," "The Speaker Specialists," "Dynamic Balance" et "Acoustic Resonance Control" sont des marques de commerce enregistrées de la Britannia Investment Corporation utilisées sous licence par Polk Audio Inc.**



## Free Manuals Download Website

<http://myh66.com>

<http://usermanuals.us>

<http://www.somanuals.com>

<http://www.4manuals.cc>

<http://www.manual-lib.com>

<http://www.404manual.com>

<http://www.luxmanual.com>

<http://aubethermostatmanual.com>

Golf course search by state

<http://golfingnear.com>

Email search by domain

<http://emailbydomain.com>

Auto manuals search

<http://auto.somanuals.com>

TV manuals search

<http://tv.somanuals.com>