

Quatech Model SS-BLT-400

Bluetooth to RS-232/422/485
Isolated Converter

Operation Manual



First Edition, Jun 2008

Table of Contents

1. Introduction	2
2. Package checklist	3
3. Product Specification	4
4. Product Panel Views Description	6
Product Views	6
DC-In Power Outlet	6
Antenna Connector	7
Serial I/O Port of RS-232&RS-422/485	7
Terminator	8
Set Button	8
LED Indicators	9
5. Hardware Installation	10
6. BT RS232 Config Tool Installation & Setup	11
Tool Installation	11
Configuration Tool Parameters Configuration	12
Apply “Connect”	14
Apply “Write”	15
Apply “Read”	15
Appendix A - Pin Outs and Cable Wiring	16
DC Power Outlet	16
RS-232 Pin Assignment	16
RS-232 Wiring Diagram	16
RS-422/485 Pin Assignment	17
RS-422 Wiring Diagram	17
RS-485 Wiring Diagram	17

1

Introduction

Thank you for your purchase of the Bluetooth To Serial Adapter. Featuring Bluetooth wireless technology, it is for replacement of standard RS232 or industrial RS422/485 cable perfectly, with standard RS232 and industrial RS422/485 interfaces, so can be easily adopted for industrial machines with RS232 or RS422/485 interfaces. The Bluetooth To Serial Converter is compatible with all Bluetooth V.2.0-certified and is backward compatible with v1.1/1.2 devices. You can connect between your computers (Master) and RS232/422/485 devices (Slave) 100 meters away without cables in your working environments.

Security of Bluetooth wireless communication is very strong because it uses the frequency hopping and 128bit encryption in 2.4GHz frequency range. Hardware setting is very easy and simple. The maintenance is very convenience too. One pair of The Bluetooth To Serial Converter will try to connect automatically whenever powered up after finishing the device's parameters configured. It does not require extra software for operation. No installation of driver and application software.

This Bluetooth To Serial Converter meets the industrial level as provide 3000 VDC of isolation to protect the host computer or other connected equipments from ground loops and destructive voltage spikes on the RS-232/RS-422 and RS-485 data lines. It also offers internal surge-protection on data lines. Internal high-speed transient suppressors on each data line protect US-101-I from dangerous voltages levels or spikes. System OS requirements as Win 98 / Me / 2000 / XP / XP x64 / VISTA.

2

Package checklist

This Bluetooth To Serial Converter is shipped with the following items:

- 1 unit of Bluetooth To Serial Converter
- 1 unit of Power Adaptor (9V DC, 200mA)
- User Operation Manual
- Software CD

NOTE: Notify your sales representative if any of the above items is missing or damaged

3

Product Specification

- Serial Port

No. of Ports : RS-232 / 422 / 485 * 1 Port

- Port Type : DB9 Female
- Built-in RS-422/RS-485 Terminal Resister (Surge Protection)
- Speed : 1200 bps ~ 115.2 K bps
- Parity : None , Odd , Even
- Data Bit : 8
- Stop Bit : 1 , 2
- Flow Control : DTR / DSR
- RS-232 Signals : Rx , Tx , GND , RTS , CTS , DTR , DSR , DCD
- RS-422 Signals : Rx+ , Rx- , Tx+ , Tx- (Full-duplex)
- RS-485 Signals : Data+ , Data- (Half-duplex)
- Connected Serial port type identification : Auto-Detection
- Optical isolation protection : 3000V DC
- 15KV ESD for all signal

- Bluetooth I/O Port

No. of Ports : Bluetooth * 1 Port

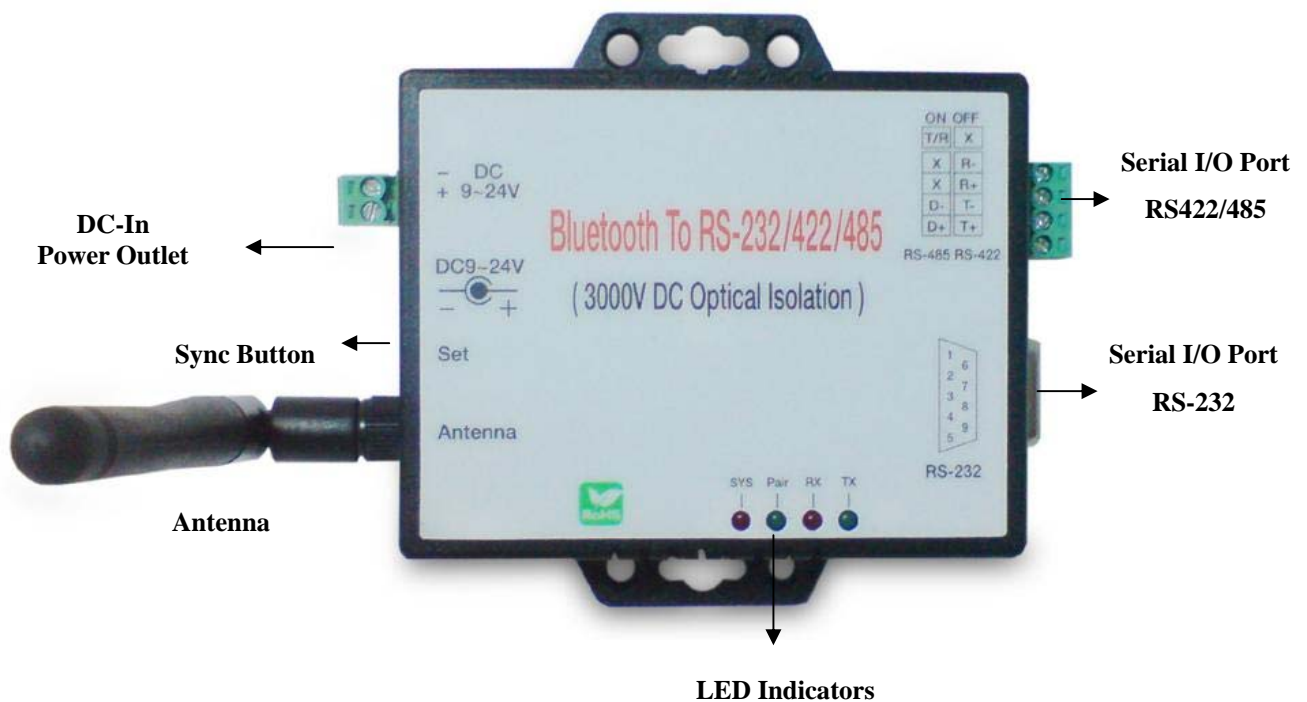
- Compliant with Bluetooth v2.0+EDR
- Support Bluetooth Serial port profile(SPP)
- Operate in 2.4GHz – 2.483GHz ISM Band
- Support Bluetooth Radio with Class 1 & 2 RF
- Operating Distance up to 100 Meters
- Power : 9V DC / 200mA, Consumption 150mA
- Led Lamp :
SYS (red), Pair (green), Rx (red), Tx (green)

- Environment : Operating Temperature: 0°C ~60°C
Storage Temperature : -25°C ~70°C
- Dimensions : 90 * 65 * 27 mm (W * D * H)
- WEIGHT : 200 gm
- Regulatory Approvals :
 - EMC : FCC Class A, CE Class A
 - WARRANTY : 1 year
 - RoHS

4

Product Panel Views Description

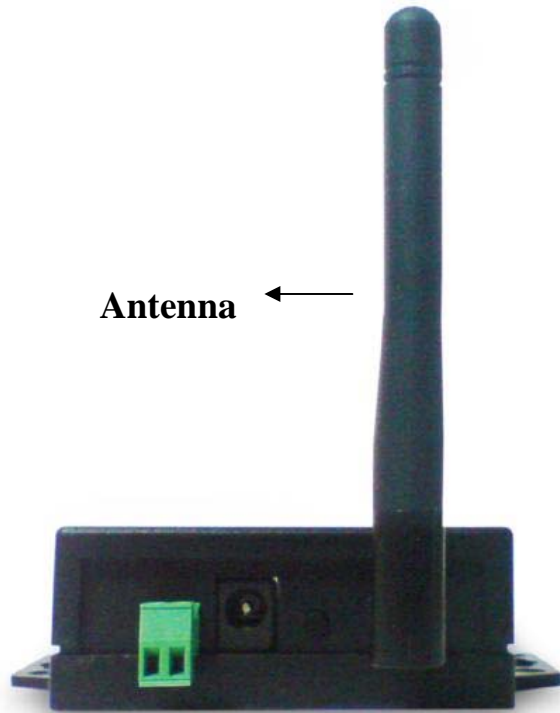
Product Views



DC-In Power Outlet

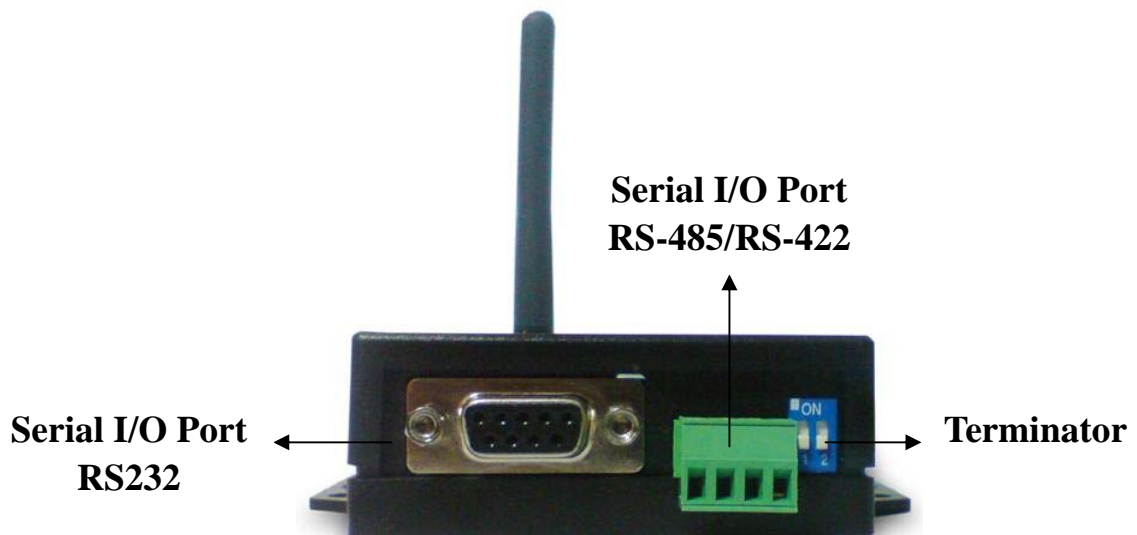
This Bluetooth To Serial Converter is powered by a single 9V DC (Inner positive/outer negative) power supply and 200mA of current. A suitable power supply adapter is part of the package. Connect the power line to the power outlet beside of antenna connector and put the adapter into the socket. If the power is properly supplied, the red color LED (SYS) will be on.

Antenna Connector



The antenna is a standard SMA jack. Simply connect it to a 2.0dBi dipole antenna (Standard Rubber Duck) and it is 50 Ohms impedance and can support 2.4GHz frequency.

Serial I/O Port



Serial I/O Port of RS232&RS422/485

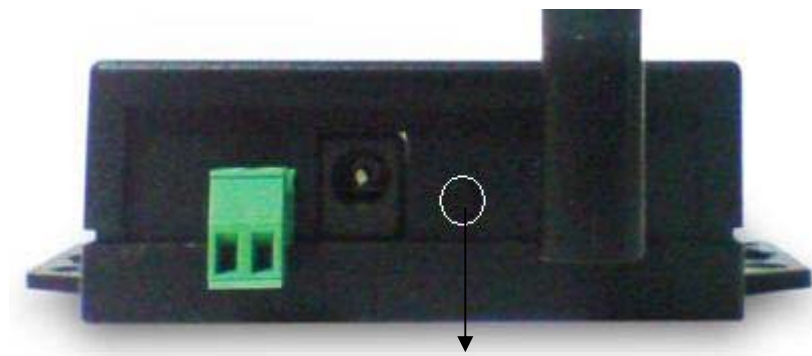
Connect the serial data cable between the converter and the serial device.

Follow the parameter setup procedures to configure the converter (see the following chapters).

Terminator

The purpose is for compensating signal attenuation in long distance connection at RS-485/RS-422 I/O. If the switch 1 & 2 are set in “ON” position, the signal compensation will be activated. To disable the function, just to push switch 1 & 2 to opposite position.

Set Button



Set Button

The purpose is for synchronizing between this Bluetooth To Serial Converter and “BT RS232 Config Tool” software. After finishing the parameter setup of “BT RS232 Config Tool” software, when you click the icon of “Connect” in “BT RS232 Config Tool” software and then use any point tip to push this button immediately on the left side of the device. You will see the icon of “Connect” turn into “Disconnect” and the meaning is successful to active the device.

LED Indicators



SYS (Red) :

It is the power indicator, when the power is on then the LED will blink once per second.

Pair (Green) :

Before connecting to synchronize between the device and the “BT RS232 Config Tool” software, the green LED will be blinking

After connecting to synchronize between the device and the “BT RS232 Config Tool” software, the green LED (Pair) will be on

RX (Red) :

Data received indicator (When data are received from the network, the LED will be on.)

TX (Green) :

Data sent indicator (When data are sent out to the network, the LED will be on.)

5

Hardware Installation

1. Connect this Bluetooth To Serial Converter to COM Port of PC and then to connect DC power adapter and jack into power outlet and DC-in outlet. You will see the red LED is going to be on and the green LCD will be blink.
2. After running the BT RS232 Config Tool and finish configuration. Click the icon of “Connect” in tool software and press the set button of this Bluetooth To Serial Converter immediately.
3. The green LED will be turn into on. The Bluetooth To Serial Converter is active.

There are two types of RS232 devices in field. One is DTE - Data Terminal Equipment (such as a PC) and the other one is DCE - Data Communication Equipment (such as a Modem). You can setup The Bluetooth To Serial Converter as what type of the RS232 device you are going to connect in DTE or DCE mode to work with it.

At DCE device side means to connect a DTE of The Bluetooth to Serial Converter to the remote DCE RS232 device (such as a Modem). On the contrary, DTE device side to connect a DCE of the Bluetooth to Serial Converter to any DTE device, such as a computer device. For example, you can connect a remote modem with a DTE of the Bluetooth to Serial Converter and meanwhile at PC side, you can either connect a DCE of the Bluetooth to Serial Converter to it.

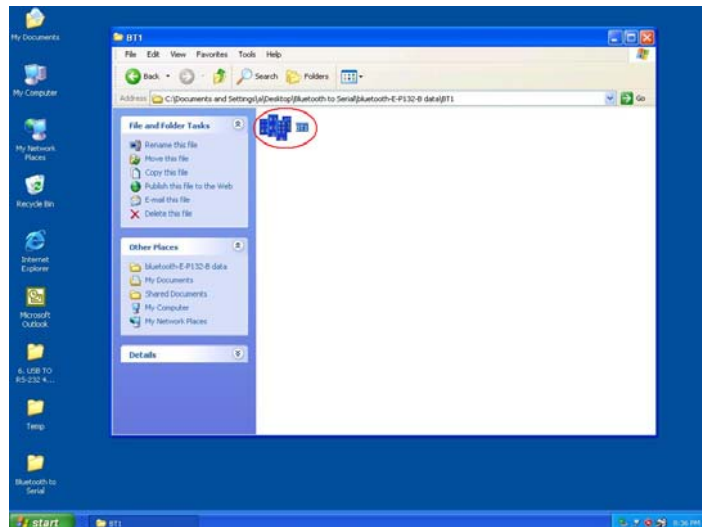
6

BT RS232 Config Tool Installation & Setup

When setting up this Bluetooth to Serial Converter for the first time, you have to install and run “BT1.exe” as “BT RS232 config tool” first in your computer device. The utility CD is enclosed in the device box. Before you use this Bluetooth to Serial Converter, you have to pair it with another Bluetooth to Serial Converter.

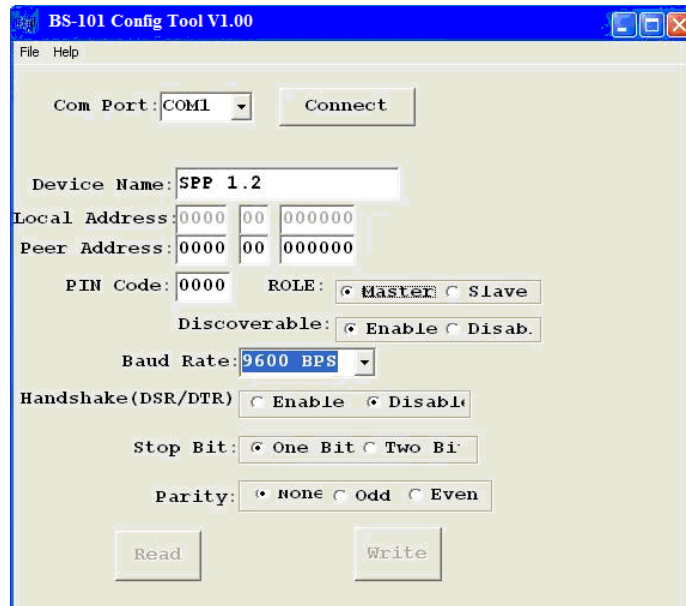
All the Bluetooth to Serial converters must be configured first before you use it. The purpose of configuration is to pair two of this Bluetooth to Serial Converter for an exclusive connection between them, and pairing is done by utilizing Bluetooth address and PIN code

● Tool Installation



When setting up this Bluetooth to Serial Converter for the first time, you have to install the utility software of “BT RS232 config tool” in your computer first which is an executable program in Windows 32 bit environments. BT RS232 config tool is used to detect and setup the installed.

- **BT RS232 Config Tool Parameters Configuration**



After double click the icon of BT1 as “BT RS232 Config Tool”, the configuration screen will be pop-up as the above picture.

A. COM Port

Select COM port number, you have to avoid the port conflict with other device in computer and use available port number

B. Device Name

Select device name is for identify each one device and you can follow the name by tool access or retying the new name by yourself.

C. Local Address

Local address will be automatically changed after finishing the parameter configuration to apply.

D. Peer Address

Peer address is for pairing device to communicate in a same network address.

E. PIN Code

PIN code is for the purpose of security consideration during as like a pass key. Device uses this “PIN Code” to identify during connecting and communication.

F. Role

Role is for identifying a role of the device as a master or slave. The item of “Role” is chose “**Master**”. The device will be play like a DTE mode - Data Terminal Equipment (such as a PC). If the item of “Role” is chose “**Slave**” and the device will be play like a DCE - Data Communication Equipment (such as a Modem). You can setup this Bluetooth to Serial Converter as what type of the RS232 device you are going to connect in DTE or DCE mode to work with it.

G. Discoverable

The item of discoverable is for allowing (or not) the device is detected by other Bluetooth devices.

H. Baud Rate

The item of baud rate is for the pack transmission speed. The baud rate range is from 120 bps~115.2K bps and depend on transmission distance and environments. Normally, the parameter of baud rate is sat around 9600 bps.

I. Handshake(DSR/DTR)

The item of handshake is set at the “Disable” item.

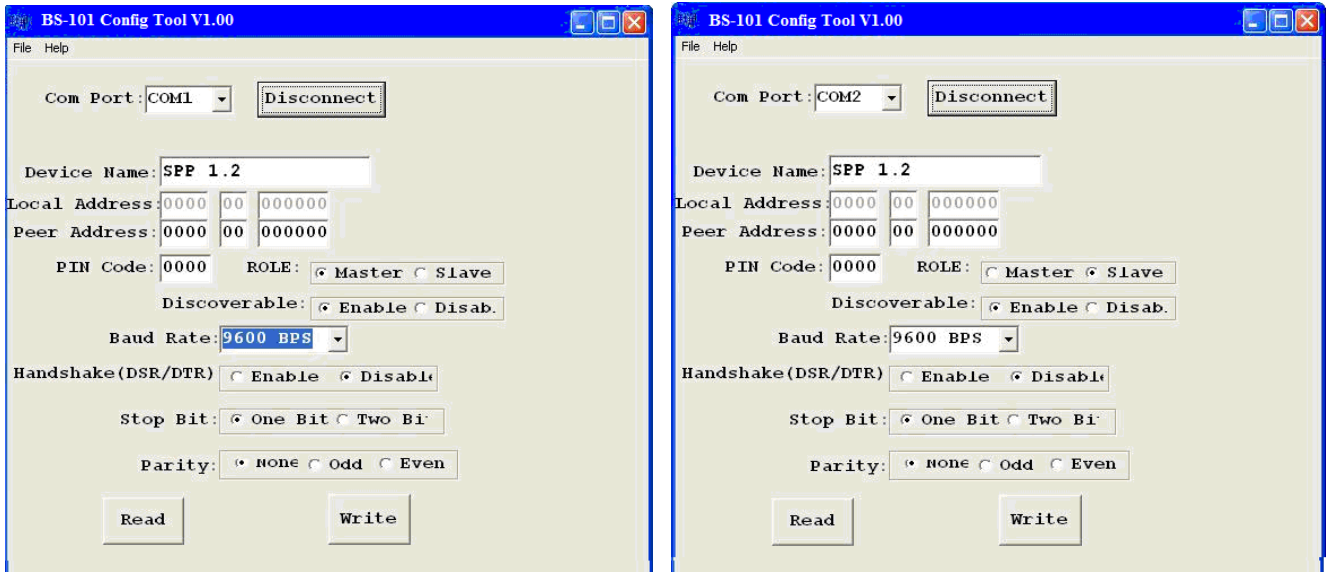
J. Stop Bit

The item of stop bit is set at the “One Bit” item.

K. Parity

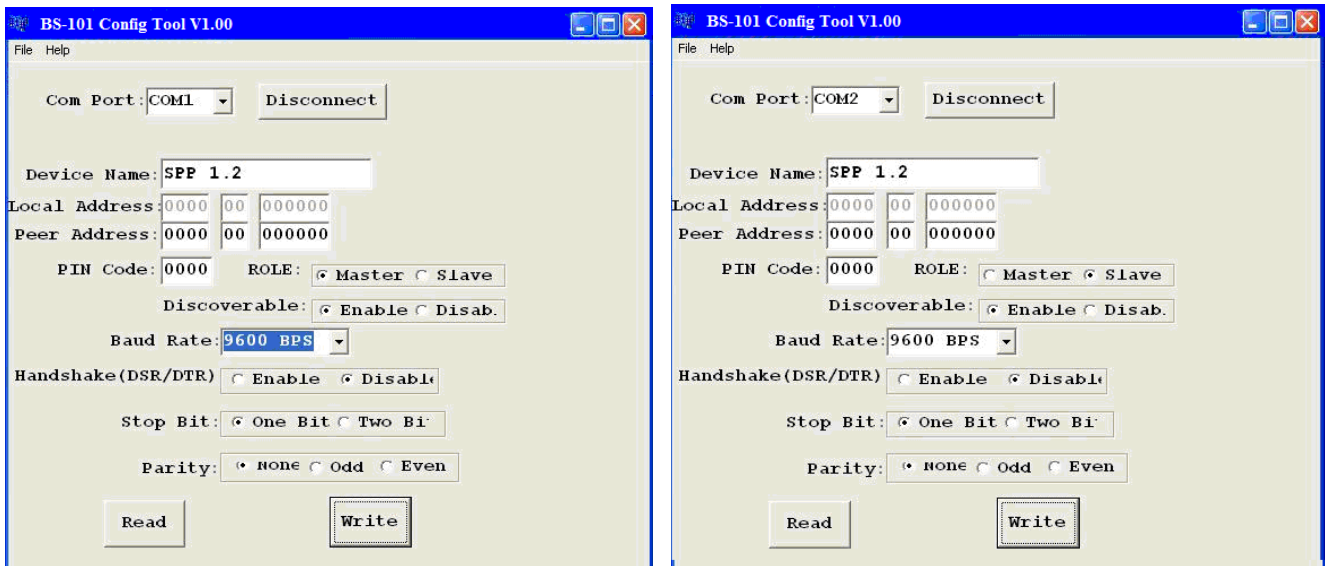
The item of parity is set at the “None” item.

Apply “Connect”



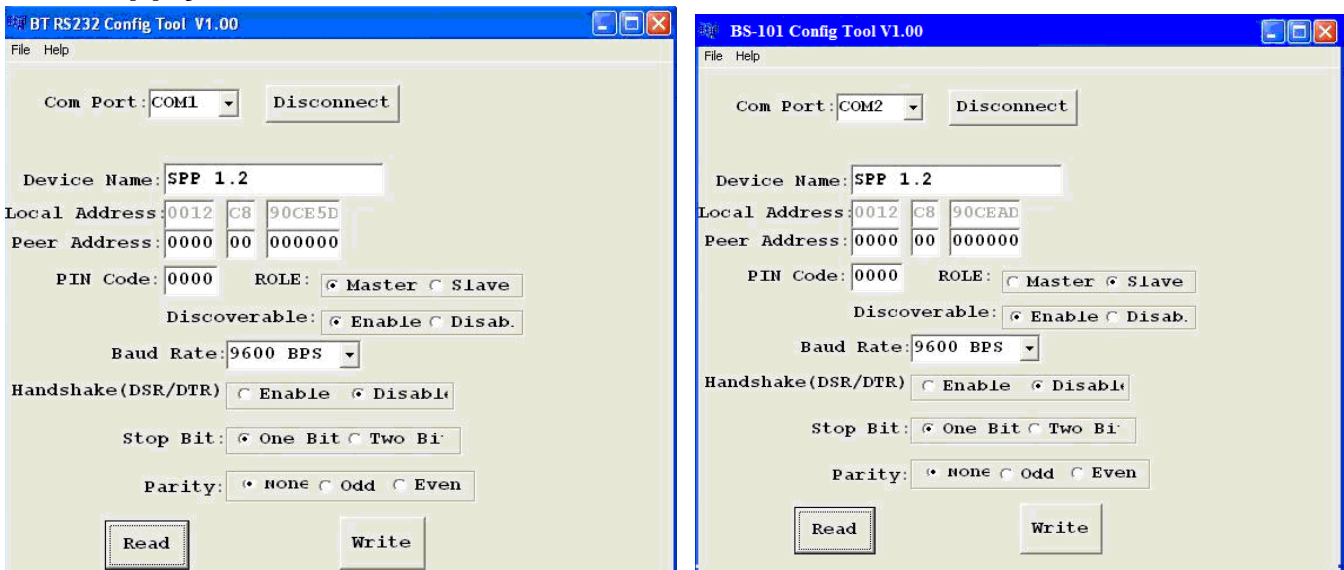
After finish the parameters configuration, click the icon of “Connect” in BT RS232 Config Tool screen and meanwhile press the Synchronous button immediately on the left side of the device. And then the next screen of parameters configuration is pop-up. The icon of “Connect” is changed to “Disconnect” and two icons will be turned into active mode on the bottom of the BT RS232 Config Tool screen.

Apply "Write"



To click the item of "Write", the meaning is to save all parameters after configuring into the "BT RS232 Config Tool".

Apply "Read"

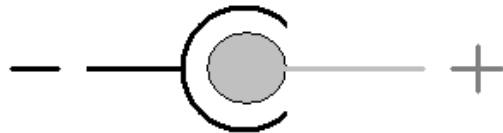
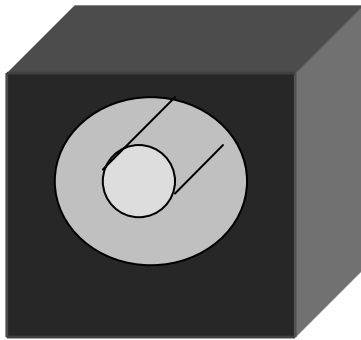


To click the item of "Read", the meaning is to load all parameters as last time saving from the "BT RS232 Config Tool". The local address will be updated the real device address at first time.

Appendix A

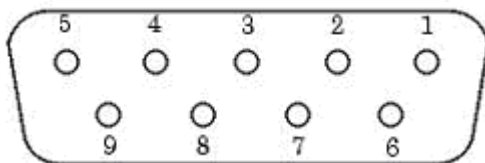
Pin outs and Connector

□ **DC Power outlet**



□ **RS-232 Pin Assignment**

The pin assignment scheme for a 9-pin male connector on a DTE is given below.



PIN 1 : NC	PIN 2 : TXD	PIN 3 : RXD	PIN 4 : DSR
PIN 5 : GND	PIN 6 : DTR	PIN 7 : CTS	PIN 8 : RTS
PIN 9 : Power (optional)			

□ **RS-232 Wiring Diagram**

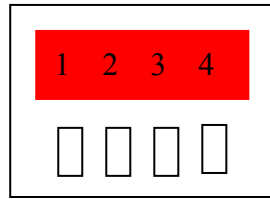
Serial Device

Bluetooth To Serial Converter

2 RX	3 TX	
3 TX	2 RX	
5 GND	5 GND	
4 DTR	6 DSR	(Flow Control)
6 DSR	4 DTR	(Flow Control)

□ **RS-422/485 Pin Assignment**

The pin assignment scheme for a 4-pin RS-422 is given below.



RS-422 : PIN 1 : T+ PIN 2 : T- PIN 3 : R+ PIN 4 : R-
RS-485 : PIN 1 : D+ **PIN2 : D-**

□ **RS-422 Wiring Diagram**

Serial Device	Bluetooth To Serial Converter
T+ _____	3 R+
T- _____	4 R-
R+ _____	1 T+
R- _____	2 T-

□ **RS-485 Wiring Diagram**

Serial Device	Bluetooth To Serial Converter
D+ _____	1 D+
D- _____	2 D-

Free Manuals Download Website

<http://myh66.com>

<http://usermanuals.us>

<http://www.somanuals.com>

<http://www.4manuals.cc>

<http://www.manual-lib.com>

<http://www.404manual.com>

<http://www.luxmanual.com>

<http://aubethermostatmanual.com>

Golf course search by state

<http://golfingnear.com>

Email search by domain

<http://emailbydomain.com>

Auto manuals search

<http://auto.somanuals.com>

TV manuals search

<http://tv.somanuals.com>