

RCA QuickStartGuide

English **small wonder**

EZ3000 Series RCA Small Wonder Camcorder
www.mysmallwonder.com

Congratulations on purchasing your new RCA High Definition Small Wonder Camcorder.

Please read these instructions for quick tips on using the product.

The User Manual PDF file can also be found in the camcorder memory under the User Manuals folder.

1. Content of the box

- Small Wonder Camcorder
- AC/DC adapter
- USB cable
- AV cable
- Tripod mount
- Carrying case
- Wrist strap
- Quick Start Guide
- Owner Registration card
- Warranty leaflet

2. Charging your camcorder

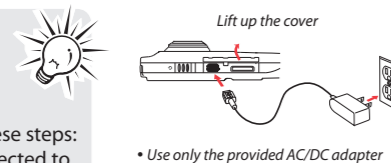
Please charge the battery for at least three hours before first use.

NOTE:

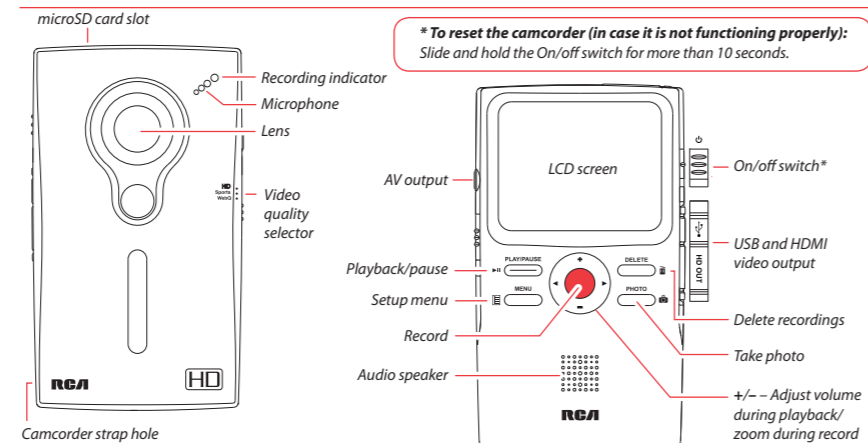
The unit is properly charging when you see the animated charging symbol on the Camcorder display.

If you do not see this charging symbol, follow these steps:

1. Make sure that you have the camcorder connected to the AC/DC power adapter.
2. Momentarily slide and hold the Camcorder power switch to the ON position to initiate charging.



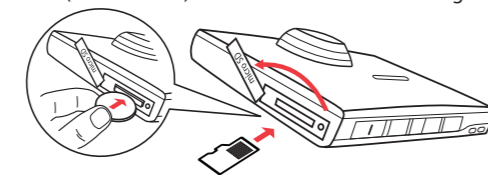
3. General controls



*** To reset the camcorder (in case it is not functioning properly):**
Slide and hold the On/off switch for more than 10 seconds.

4. Inserting (or removing) memory card

The camcorder internal memory will only permit minutes of recording time. A microSD memory card (not included) is recommended for recording.

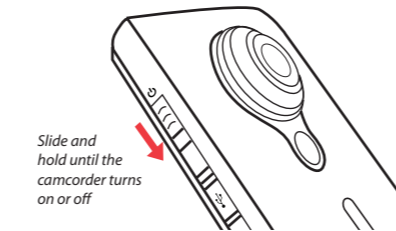


As the memory card is small in size, it is recommended to use **a small coin** to help insert or remove it.

To insert card: Push the card in until a click is heard

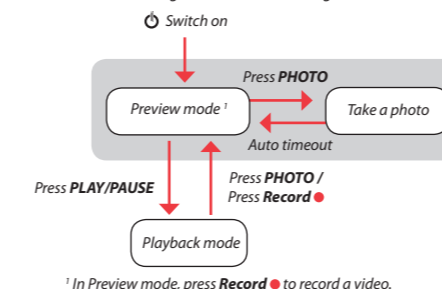
To remove card: Push card in until a click is heard, then slowly release the card. As card is under minimal tension when locked in memory slot, please use care when removing.

5. Turning on the camcorder



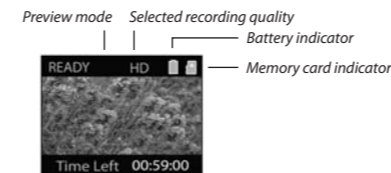
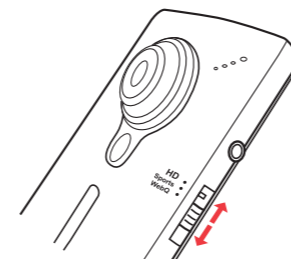
Slide and hold until the camcorder turns on or off

The camcorder has two operation modes (Preview and Playback). It is always in Preview mode after switched on. Refer to the diagram below for switching between modes.



¹ In Preview mode, press **Record** to record a video.

6. Selecting recording quality

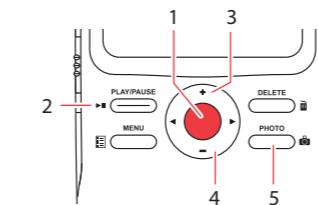


Settings	Resolutions (pixel) & Frame Rates (FPS)	Approx. recording durations on a 16 GB memory card ²
HD	1440 x 1080 @ 30fps	5 hours
Sports	848 x 480 @ 60fps	8 hours
WebQ	320 x 240 @ 30fps	40 hours

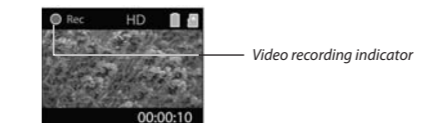
² Actual recording time and capacity will vary depending on type of video content being recorded, system requirements, and other factors.

Download from www.Somanuals.com. All Manuals Search And Download.

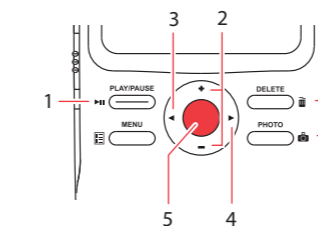
7. Video recording and photo taking



- 1 Start, stop, resume recording in Preview mode; enter Preview mode from other modes
- 2 Pause recording
- 3 Zoom in during recording
- 4 Zoom out during recording
- 5 Take photos



8. Playing back or deleting recordings



- 1 Enter Playback mode to play the most recent recording; start or pause playback
- 2 Adjust volume during playback
- 3 Cue to previous recording
- 4 Cue to next recording
- 5 Enter Preview mode from Playback mode
- 6 Press to select delete one or all recordings.
- 7 Enter Preview mode from playback mode; take photos



QuickTime and the QuickTime logo are trademarks or registered trademarks of Apple Computer, Inc., used under license therefrom.

9. Installing RCA Memory Manager application

Connect the camcorder to your PC with the provided USB cable.

To install Memory Manager 3

Windows: Open **My Computer** and double-click the drive labeled SMALLWONDER. Double-click **MemoryMgr3_Windows_Installer.exe** to start the installation.

Mac: Open the mounted volume labeled **SMALLWONDER** on the desktop. Double-click the **RCAMacInstallers.dmg** disk image in the SMALLWONDER volume. Locate the **RCAMacInstallers** volume on the desktop and Double-click on it. Double-click the **MemoryMgr3 Mac Installer** file in the RCAMacInstallers volume to start the installation. After the Memory Manager 3 installation has completed, double-click the **RCA Detective Installer** file in the **RCAMacInstallers** volume to install the RCA Detective application.

To ensure that videos can be managed and played on your PC:

- Make sure to install the included Memory Manager application.

10. Learning more about the camcorder

Read the user manual for more information on the followings:

- Using the **MENU** button to setup the camcorder (including date and time)
- Viewing videos on TV
- Recording videos to VHS tape or DVD
- Connecting the camcorder to your PC
- Tips and troubleshooting
- Safety and warranty information

Visit <http://store.audiovox.com> to find the best accessories for your products.



For Customer Service
Visit Our Website At
www.mysmallwonder.com
Product Information, Photos,
FAQ's, User Manual

© 2010 Audiovox Accessories Corporation
111 Congressional Blvd., Suite 350
Carmel, IN 46032
Trademark Registered
Printed in China

Free Manuals Download Website

<http://myh66.com>

<http://usermanuals.us>

<http://www.somanuals.com>

<http://www.4manuals.cc>

<http://www.manual-lib.com>

<http://www.404manual.com>

<http://www.luxmanual.com>

<http://aubethermostatmanual.com>

Golf course search by state

<http://golfingnear.com>

Email search by domain

<http://emailbydomain.com>

Auto manuals search

<http://auto.somanuals.com>

TV manuals search

<http://tv.somanuals.com>