

CLX-6220FX/6250FX Features



Samsung CLX-6220FX and 6250FX Color Laser Multifunction Printers

Professional performance, multifunction flexibility.

Samsung's focus on high-tech design and quality color printing has yielded yet another impressive multifunction printer series: The Samsung CLX-6220FX and CLX-6250FX. They offer consistently outstanding color printing, copying, scanning and faxing, all while minimizing operational costs.

When your business demands high-performance printing, scanning, copying and faxing, the Samsung CLX-6220FX and CLX-6250FX deliver.

Specifications

Specifications	CLX-6220FX	CLX-6250FX
Print		
Speed Black/Color	Up to 21 ppm in Letter	Up to 25 ppm in Letter
First Print Out Time (Black/Color)	Less than 24 seconds	Less than 17 seconds
Resolution	Up to 9,600 x 600 dpi effective output	Up to 9,600 x 600 dpi effective output
Emulation	PostScript3, PCL5c, PCL6, SPL-C (Samsung Printer Language Color)	PostScript3, PCL5c, PCL6
Duplex	Built-in	Built-in
Copy		
Speed Black/Color	Up to 21 cpm in Letter	Up to 25 cpm in Letter
Resolution	Up to 1200 x 1200 dpi	Up to 1200 x 1200 dpi
First Copy Out Time (Black/Color)	Less than 28 seconds	Less than 24 seconds
Zoom Rate	25-400% (Platen), 25-100% (ADF)	25-400% (Platen), 25-100% (ADF)
Multi-Copy	1 - 99	1 - 99
Duplex Copy	Built-in	Built-in
Copy Features	ID, Clone, N-up, Poster, Watermark, Book, Collation and Margin Shift	ID, Clone, N-up, Poster, Watermark, Book, Collation and Margin Shift
Scan		
Compatibility	TWAIN Standard, WIA Standard (Windows XP only)	TWAIN Standard, WIA Standard (Windows XP only)
Method	Color Flatbed Scanner or DADF	Color Flatbed Scanner or DADF
Resolution (Optical)	Up to 600 x 600 dpi	Up to 600 x 600 dpi
Resolution (Enhanced)	Up to 4,800 x 4,800 dpi	Up to 4,800 x 4,800 dpi
Scan to	USB, SMB, FTP, Network, Email	USB, SMB, FTP, Network, Email
Fax		
Compatibility	ITU-T G3	ITU-T G3
Modem Speed	33.6 Kbps	33.6 Kbps
Resolution	Up to 300 x 300 dpi (Black), 200 x 200 dpi (Color)	Up to 300 x 300 dpi (Black), 200 x 200 dpi (Color)
Memory	Approx. 4MB	Approx. 4MB
Auto Redial	Yes	Yes
Fax Feature	3 Second/Page Fax Speed, Color Fax, Fax Forward to Fax/Email and security receive	3 Second/Page Fax Speed, Color Fax, Fax Forward to Fax/Email and security receive
Paper Handling		
Input Capacity	250-sheet Cassette, 100-sheet Multi-Purpose Tray	250-sheet Cassette, 100-sheet Multi-Purpose Tray
Output Capacity	170 sheets (Face-down)	170 sheets (Face-down)
Media Size	3.86" x 5.83" to 8.5" x 14"	3.86" x 5.83" to 8.5" x 14"
Media Type	Envelopes, Labels, Card Stock, Bond, Archive, Recycled, Transparencies	Envelopes, Labels, Card Stock, Bond, Archive, Recycled, Transparencies
ADF Capacity	50 sheets	50 sheets
ADF Document Size	Width: 5.6" to 8.5", Length: 5.8" to 14"	Width: 5.6" to 8.5", Length: 5.8" to 14"
General		
LCD	16 x 4 line LCD (White Backlight)	16 x 4 line LCD (White Backlight)
Memory / Storage	256MB (Max. 512MB)	256MB (Max. 768MB)
OS Compatibility	Windows 7, 2000, XP, 2003, Vista (including 64-bit), Various Linux OS, Mac OS X 10.3-10.5	Windows 7, 2000, XP, 2003, Vista (including 64-bit), Various Linux OS, Mac OS X 10.3-10.5
Interface	Hi-Speed USB 2.0, Ethernet 10/100 Base-TX, USB host 2.0 (Scan to USB, USB print)	Hi-Speed USB 2.0, Ethernet 10/100 Base-TX, USB host 2.0 (Scan to USB, USB print)
Noise Level	Less than 53 dBA (Printing) / Less than 54 dBA (Copying) / Less than 35 dBA (Standby)	Less than 54 dBA (Printing) / Less than 55 dBA (Copying) / Less than 35 dBA (Standby)
Duty Cycle, Monthly	Up to 65,000 pages	Up to 80,000 pages
Dimensions (W x D x H)	18.4" x 19.6" x 25.6"	18.4" x 19.6" x 25.6"
Weight	79.4 lbs.	82.5 lbs.
Consumables		
Black Toner Cartridge	Average Continuous Black Cartridge Yield <ul style="list-style-type: none"> • CLT-K508L: 5,000 standard pages • CLT-K508S: 2,500 standard pages (ships with 2,500-page standard toner cartridge) Declared yield value in accordance with ISO/IEC 19798	Average Continuous Black Cartridge Yield <ul style="list-style-type: none"> • CLT-K508L: 5,000 standard pages • CLT-K508S: 2,500 standard pages (ships with 2,500-page standard toner cartridge) Declared yield value in accordance with ISO/IEC 19798
Yellow/Magenta/Cyan Toner Cartridge	Average Continuous Yellow/Magenta/Cyan Cartridge Yield <ul style="list-style-type: none"> • CLT-C508L/CLT-M508L/CLT-Y508L: 4,000 standard pages • CLT-C508S/CLT-M508S/CLT-Y508S: 2,000 standard pages (ships with 2,000-page standard toner cartridge) Declared yield value in accordance with ISO/IEC 19798	Average Continuous Yellow/Magenta/Cyan Cartridge Yield <ul style="list-style-type: none"> • CLT-C508L/CLT-M508L/CLT-Y508L: 4,000 standard pages • CLT-C508S/CLT-M508S/CLT-Y508S: 2,000 standard pages (ships with 2,000-page standard toner cartridge) Declared yield value in accordance with ISO/IEC 19798
Transfer Belt	CLT-T508 (50,000 Page Yield)	CLT-T508 (50,000 Page Yield)
Options		
Options	128MB Memory: CLP-MEM201 256MB Memory: CLP-MEM202 Second Cassette Tray: CLX-S6250A	128MB Memory: ML-MEM150 256MB Memory: ML-MEM160 512MB Memory: ML-MEM170 Second Cassette Tray: CLX-S6250A Wireless Network Card (802.11 b/g): ML-NWA40L 160 GB Hard Drive ML-HDK300
Green Management		
Energy Star Compliant	■	■

Product Information: 1-866-542-7214
 Product Support: 1-866-SAM-4BIZ
samsung.com/printer

 **STAR** program
 SAMSUNG Toner Recycling Program
samsung.com/starus



©2010 Samsung Electronics America, Inc. Samsung is a registered mark of Samsung Electronics Corp., Ltd. Specifications and designs are subject to change without notice. Non-metric weights and measurements are approximate. All brand, product, service names and logos are trademarks and/or registered trademarks of their respective manufacturers and companies. Simulated screen images. Printed in USA on 50% recycled (25% post-consumer waste) paper using soy inks. PNT-CLX6220FX6250FXBRO-Mar10T





SAMSUNG

Color Print, Copy, Scan, Fax

Professional color for increased productivity.



Samsung Color Laser Multifunction Printers
CLX-6220FX and CLX-6250FX



Efficient functionality for maximum productivity.

With Samsung's CLX-6220FX and CLX-6250FX color laser multifunction printers, you get the benefit of high quality color printing, scanning, copying and faxing, for a productive and efficient office environment.

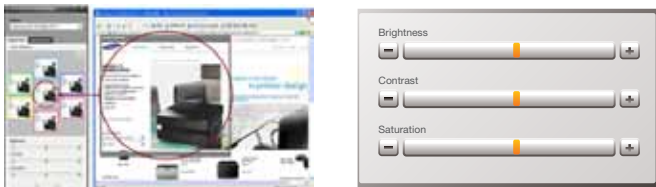
Low maintenance, high speed and user-friendly features combines with enhanced color quality and superior design specifications to make the Samsung CLX-6220FX and CLX-6250FX an effective printing solution for your business.



Color technology suitable for a demanding office environment.

Improved color technology delivers color adjustments and uniformity for versatile and high quality document output.

Samsung Easy Color Manager Easy Color Manager allows you to easily adjust the color balance, brightness, contrast, and saturation of any image that you view on your monitor. This is especially useful when you have specific color preferences, or when your company has branding color requirements.



With Easy Color Manager, you can:

- Select an image from anywhere on your screen.
- Expand or reduce the preview window.
- Adjust the image's color tone.
- Save toner and paper by only selecting the area you want to print.

High Resolution Communication is key in any business. And if you communicate with superior print quality, your company can stand out. The Samsung CLX-6220FX and CLX-6250FX excel by offering 9600 x 600 dpi that combines with a high-gloss feature to create outstanding high-resolution color documents.



Outstanding performance.

The Samsung CLX-6220FX and CLX-6250FX printers deliver improved functionality to ensure versatile and high-quality document output, whether you're printing, copying or faxing. Smaller businesses and workgroups can now benefit from having fast multifunction features without compromising on quality.

High Speed Users benefit from a high-speed printer, copier and scanner that offers high resolution document printing. With up to 700 MHz CPU (CLX-6250FX) and a generous 256 MB RAM, the Samsung CLX-6220FX and CLX-6250FX offer fast 21-25 ppm print speeds respectively, and a fast First Page Out Time of less than 17 seconds (CLX-6250FX only).



Smooth Network Integration The built-in Ethernet interface allows you to connect everyone in your office to one network and keep everything running smoothly. They'll share a common printer and you'll save the time needed to service multiple machines.



Samsung Fine Edge Technology With Samsung Fine Edge technology, the edges of fonts appear crisper and clearer, producing a more visually appealing document. You'll have precise and focused documents that give you ultimate readability.



93 PCL Fonts The Printer Command Language, with 93 sets of fonts, allows you to be more creative with your documents. With a wider variety of fonts, you can create more versatile and more imaginative documents.

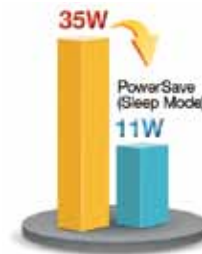
For an office environment that wants economical and efficient quality.

Consolidation of your office equipment can dramatically reduce overhead across your print, scan, copy and fax environments. You'll only need consumables for one machine and you'll reduce the amount of electricity you use. If you're looking for a machine that's both easy to use and easy on your budget, choose the CLX-6220FX or CLX-6250FX.

Economical for your business environment.



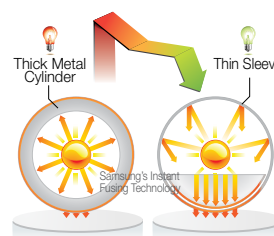
Toner Management With the TonerSave™ feature, you can monitor and effectively limit your toner usage for a cost-effective business solution. Using less toner on each page can also extend your cartridge life, significantly reduce your cost per page, and help you to meet stricter environmental standards.



PowerSave™ Mode This feature reduces the cost of printing and lowers the temperature of the machine, creating a more durable environment for printer components. And less wear and tear means extended quality and fewer maintenance parts required.



Duplex Printing With the Samsung CLX-6220FX and CLX-6250FX, duplex printing has been made easier and more convenient by eliminating the need for manual paper reinsertion. The duplex automatic document feeder saves time and money by automatically loading and flipping the paper for easy double-sided document printing, including faxes.



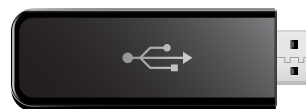
Energy-Efficient Samsung's Instant Fusing technology utilizes low energy lamps for heating the internal print roller, rather than using the traditional high-energy heating elements, for a super-efficient and accelerated printing process.

User-friendly, multifunction printers.

Blue Compass Navigation Samsung's unique Blue Compass navigation with 4-Line LCD screen is easy to learn and even easier to use, so you can be more productive sooner. The navigation layout gives you instant access to print functions and controls. Simple, intuitive menus and buttons add to the savings in training and troubleshooting time. The 4-Line LCD makes operations quick and easy, and the control panel has everything covered, including job status, toner level, paper jam, paper empty and cover open alerts.



Direct USB Interface The Samsung CLX-6220FX and CLX-6250FX utilize the latest technology to ensure total convenience. The USB port located on the front of the printer allows you to easily access and print files stored on your USB drive. With a wide range of files supported from PDF, BMP, TIFF and JPEG, you can save time by printing straight from your USB drive.



USB Direct Printing

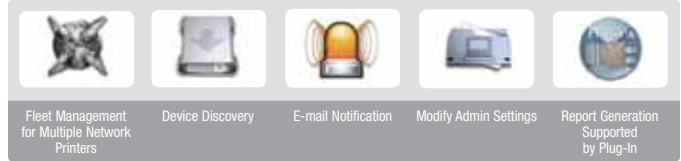
The professional solution center.

Professional printing, copying, scanning and faxing gives businesses an effective winning edge. Samsung's CLX-6220FX and CLX-6250FX printers provide professional documents, increase productivity and reduce operational costs. And those are things every business needs.



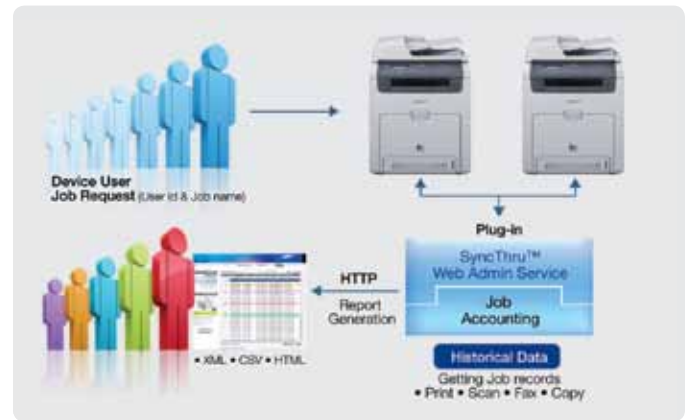
SyncThru™ Admin 5.

The SyncThru™ Admin 5 device management solution allows IT managers to easily manage and monitor all the printer and MFP devices on their network. SyncThru™ Admin 5 enhances productivity by using efficient and time-saving device management tools such as Remote Settings Modification and Driver Distribution. You can also add Job Accounting, Usage Monitoring, Authentication and Storage Management Plug-In to this solution.



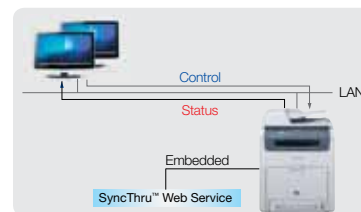
Job Accounting Plug-in for SyncThru™ Admin 5.

The Job Accounting Plug-in for SyncThru™ Admin 5 is a usage monitoring and tracking solution for printers and MFPs. The system manages devices and user accounts, allowing you to view job accounting information and statistics. This system provides a cost effective and efficient solution. Authorized users can completely manage data and control access with ease.



SyncThru™ Web Service.

SyncThru™ Web Service is easily and remotely accessible through a web browser, and provides administrators with the ability to change network and individual printer settings, upgrade firmware and view network printer status.



How SyncThru™ Web Service Operates



Screenshot of Web Browser

Secure printing without a hard drive.



With the addition of optional memory (increasing the standard memory from 256MB up to 768MB) the CLX-6250FX is able to securely store files directly, offering less chance of failure and ensuring faster, more secure printing.

Free Manuals Download Website

<http://myh66.com>

<http://usermanuals.us>

<http://www.somanuals.com>

<http://www.4manuals.cc>

<http://www.manual-lib.com>

<http://www.404manual.com>

<http://www.luxmanual.com>

<http://aubethermostatmanual.com>

Golf course search by state

<http://golfingnear.com>

Email search by domain

<http://emailbydomain.com>

Auto manuals search

<http://auto.somanuals.com>

TV manuals search

<http://tv.somanuals.com>