

Quick Start Guide for iOS Setup

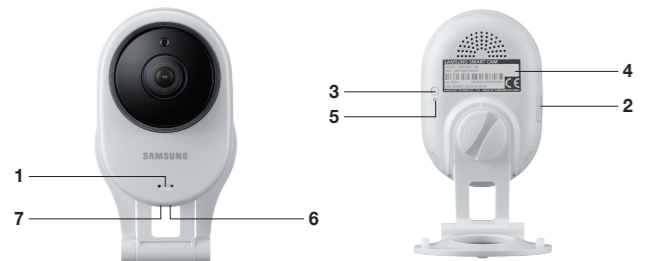
Before you begin your SmartCam Setup, please:

- ✓ Have your SmartCam and power adapter ready.
- ✓ Have your iOS device available to download the SmartCam app.
- ✓ Make sure you are within range of the same Wi-Fi network you'll use for your camera.
- ✓ Have your Wi-Fi network password handy.

If you have questions or need help installing your SmartCam, please contact our free technical support.
 1-877-349-3149 (9am – 9pm EST, Mon – Sun)
 Please visit samsungsmartcam.com for full user manual, mobile app manual and FAQs.

Product Views For Setup

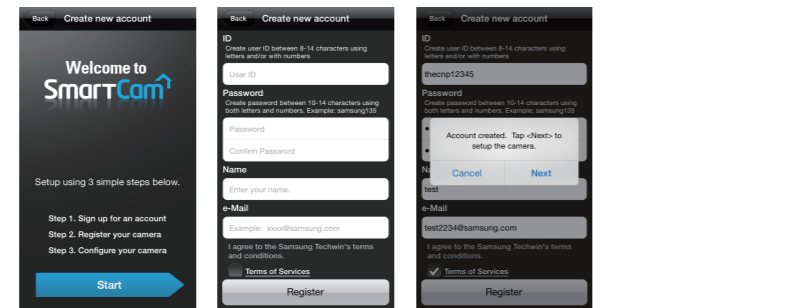
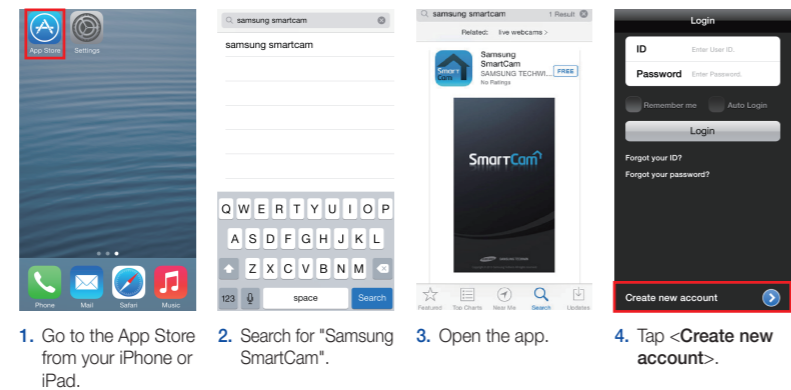
Use the following illustrations to familiarize yourself with the camera setup parts. For a more detailed diagram, please see User's Manual.



- | | |
|-----------------------------------|--|
| 1) Power/Wi-Fi Status LED | 5) Reset Button |
| 2) MicroSD Card Slot (up to 32GB) | 6) Network Port (Used for wired connections) |
| 3) Wi-Fi Direct Button | 7) Power Input |
| 4) Serial Number (S/N:) | |

User Account Setup

Before you begin setting up the camera, you must create an user account. Follow these easy steps to register your account.



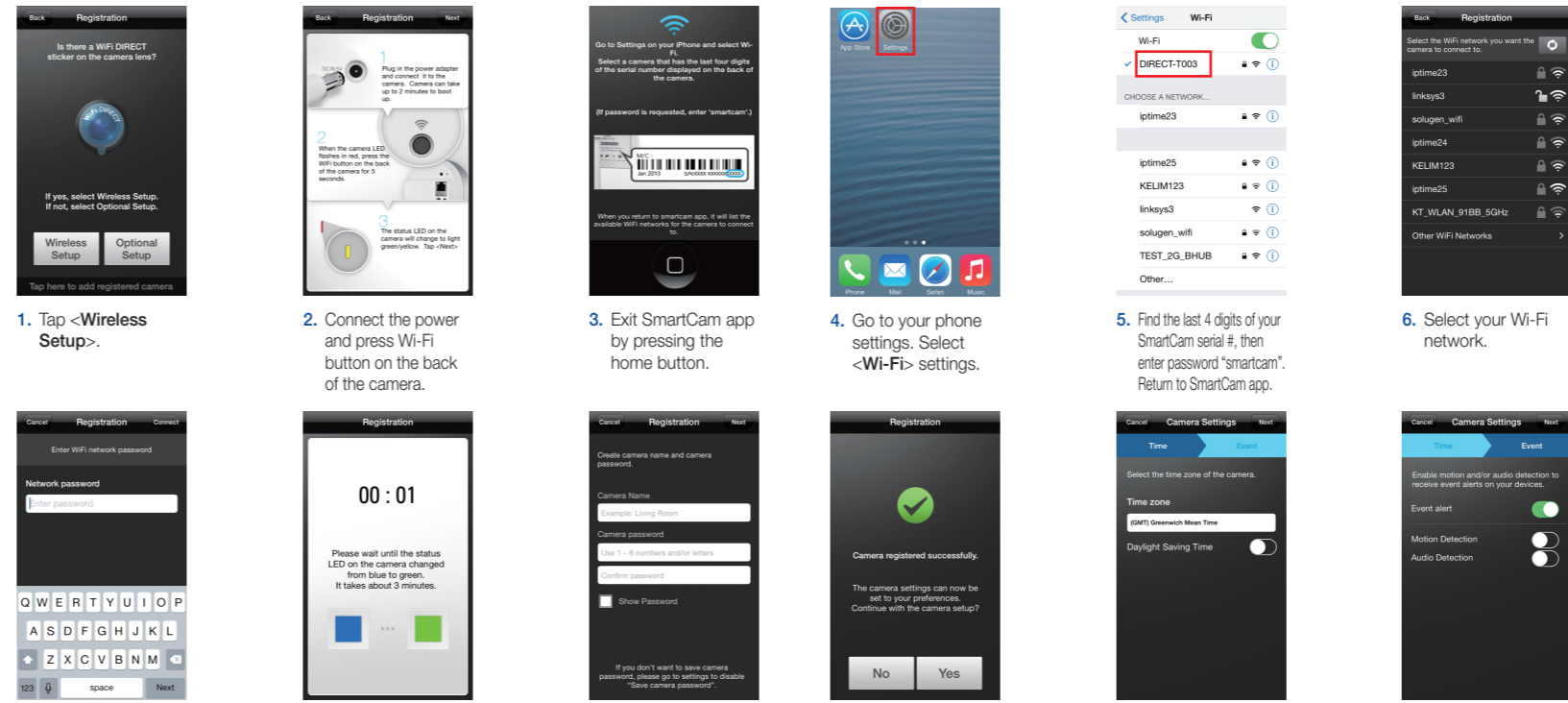
5. Tap <Start>.
6. Enter User ID, Password, valid Name and e-mail address. Tap <Register>.
7. Tap <Next> to register your camera.

Record your SmartCam information here:

Account Registration	Camera Registration
USER ID: _____ 8-14 letters or letters with numbers Example: johnsmith	CAMERA NAME: _____ 1-20 letters and/or numbers Example: LivingRoom
USER PASSWORD: _____ 10-14 letters and numbers combination Example: smartcam123	CAMERA PASSWORD: _____ 1-8 letters and/or numbers Example: 1234

iOS Wireless Camera Setup

Continue with camera setup by following the app wizard instructions.

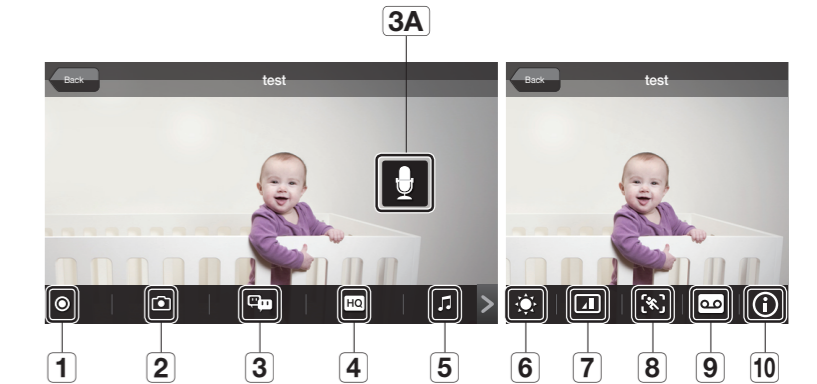


1. Tap <Wireless Setup>.
2. Connect the power and press Wi-Fi button on the back of the camera.
3. Exit SmartCam app by pressing the home button.
4. Go to your phone settings. Select <Wi-Fi> settings.
5. Find the last 4 digits of your SmartCam serial #, then enter password "smartcam". Return to SmartCam app.
6. Select your Wi-Fi network.
7. Enter your Wi-Fi network password and tap <Next>.
8. When the LED light turns green, you will automatically be directed to Step 9.
9. Create Camera Name & Password. 1-20 letters and/or numbers. Password: 1-8 letters and/or numbers.
10. If you want to begin viewing live video, select <No>. If you want to continue selecting setting preferences, select <Yes>.
11. Select your Time Zone and then tap <Next>.
12. Enable motion and/or audio detection to receive event alerts on your devices.

You have now successfully completed the SmartCam setup.

SmartCam Control Guide

Once setup is complete and live video appears on your iOS device, tap the screen to display the SmartCam tool bar. This chart serves as a reference to navigate onscreen controls and customize your SmartCam experience.



Number	Icon	Description
1		1. Manual Recording Tap to save streaming video onto the SD card
2		2. Capture Tap to capture and save a still image during monitoring
3		3. Two-Way Talk Tap to begin and end Two-Way Talk between mobile device and camera
3A		3A. Microphone Button During Two-Way Talk, press Mic Button on screen to talk, release to listen
4		4. HQ Tap to view the highest video quality available
5		5. Melody Tap to view and choose melody selection to play through camera
6		6. Brightness Control Tap to adjust screen image brightness
7		7. Flip Control Tap to flip screen image vertically or horizontally
8		8. Motion Zone Select Tap to enable Motion Zone Select by drawing up to three boxed areas on your screen for motion alerts in only those specific areas
9		9. Audio Message Recorder Tap to record up to 10 messages to be played through the camera speakers
10		10. Information Tap to display current audio and video information

Quick Start Guide for Android Setup

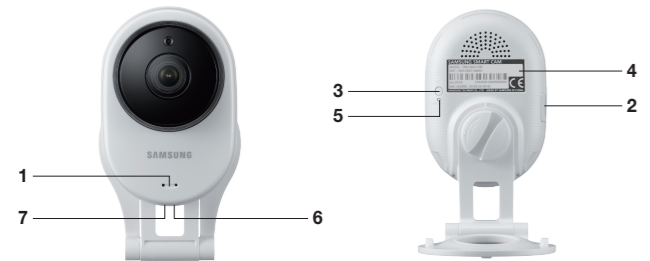
Before you begin your SmartCam Setup, please:

- ✓ Have your SmartCam and power adapter ready.
- ✓ Have your Android device available to download the SmartCam app.
- ✓ Make sure you are within range of the same Wi-Fi network you'll use for your camera.
- ✓ Have your Wi-Fi network password handy.
- ✓ Be prepared to register with a valid name and e-mail address.

If you have questions or need help installing your SmartCam, please contact our free technical support.
 1-877-349-3149 (9am – 9pm EST, Mon – Sun)
 Please visit samsungsmartcam.com for full user manual, mobile app manual and FAQs.

Product Views For Setup

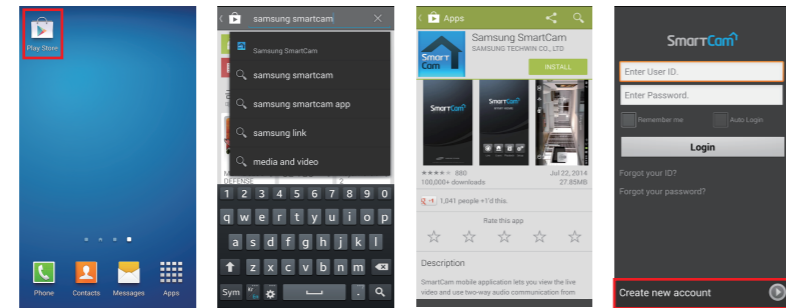
Use the following illustrations to familiarize yourself with the camera setup parts. For a more detailed diagram, please see User's Manual.



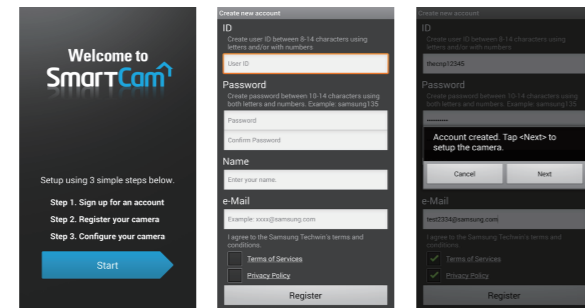
- | | |
|-----------------------------------|--|
| 1) Power/Wi-Fi Status LED | 5) Reset Button |
| 2) MicroSD Card Slot (up to 32GB) | 6) Network Port (Used for wired connections) |
| 3) Wi-Fi Direct Button | 7) Power Input |
| 4) Serial Number (S/N:) | |

User Account Setup

Before you begin setting up the camera, you must create an user account. Follow these easy steps to register your account.



1. Go to the Play Store from your Android device.
2. Search for "Samsung SmartCam".
3. Open the app.
4. Tap <Create new account>.



5. Tap <Start>.
6. Enter User ID, Password, valid Name and e-mail address. Tap <Register>.
7. Tap <Next> to register your camera.

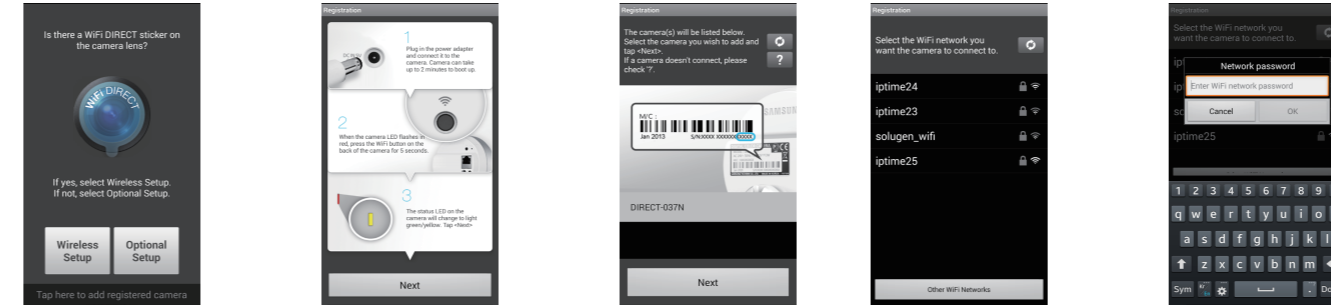
Record your SmartCam information here:

Account Registration

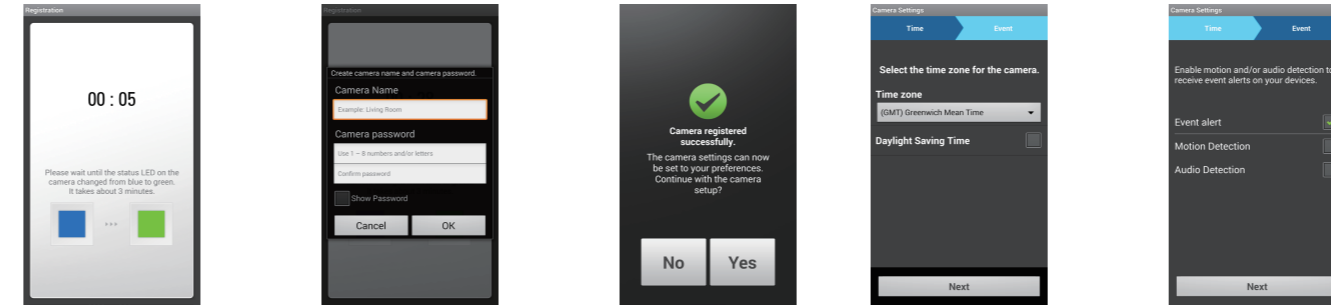
USER ID: _____ **USER PASSWORD:** _____
 8-14 letters or letters with numbers 10-14 letters and numbers combination
 Example: johnsmith Example: smartcam123

Android Wireless Camera Setup

Continue with camera setup by following the app wizard instructions.



1. Tap <Wireless Setup>.
2. Connect the power and press Wi-Fi button on the back of the camera.
3. Select your camera's serial number and tap <Next>.
4. Select the Wi-Fi connection you use for your SmartCam Camera.
5. Enter your Wi-Fi network password.



6. When the LED light turns green, you will automatically be directed to Step 7.
7. Create Camera Name & Password. Name: 1-20 letters and/or numbers. Password: 1-8 letters and/or numbers.
8. If you want to begin viewing live video, select <No>. If you want to continue with selecting camera preferences, select <Yes>.
9. Select your Time Zone and then tap <Next>.
10. Enable motion and/or audio detection to receive event alerts on your devices.

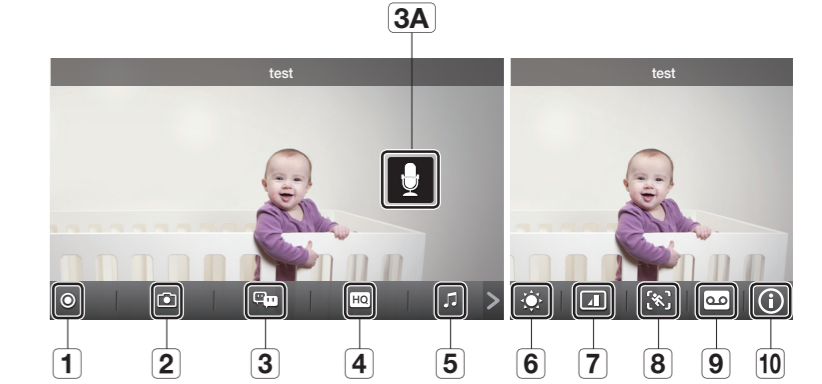
Camera Registration

CAMERA NAME: _____ **CAMERA PASSWORD:** _____
 1-20 letters and/or numbers 1-8 letters and/or numbers
 Example: LivingRoom Example: 1234

You have now successfully completed the SmartCam setup.

SmartCam Control Guide

Once setup is complete and live video appears on your Android device, tap the screen to display the SmartCam tool bar. This chart serves as a reference to navigate onscreen controls and customize your SmartCam experience.



Number	Description
1. Manual Recording	Tap to save streaming video onto the SD card
2. Capture	Tap to capture and save a still image during monitoring
3. Two-Way Talk	Tap to begin and end Two-Way Talk between mobile device and camera
3A. Microphone Button	During Two-Way Talk, press Mic Button on screen to talk, release to listen
4. HQ	Tap to view the highest video quality available
5. Melody	Tap to view and choose melody selection to play through camera
6. Brightness Control	Tap to adjust screen image brightness
7. Flip Control	Tap to flip screen image vertically or horizontally
8. Motion Zone Select	Tap to enable Motion Zone Select by drawing up to three boxed areas on your screen for motion alerts in only those specific areas
9. Audio Message Recorder	Tap to record up to 10 messages to be played through the camera speakers
10. Information	Tap to display current audio and video information

Free Manuals Download Website

<http://myh66.com>

<http://usermanuals.us>

<http://www.somanuals.com>

<http://www.4manuals.cc>

<http://www.manual-lib.com>

<http://www.404manual.com>

<http://www.luxmanual.com>

<http://aubethermostatmanual.com>

Golf course search by state

<http://golfingnear.com>

Email search by domain

<http://emailbydomain.com>

Auto manuals search

<http://auto.somanuals.com>

TV manuals search

<http://tv.somanuals.com>