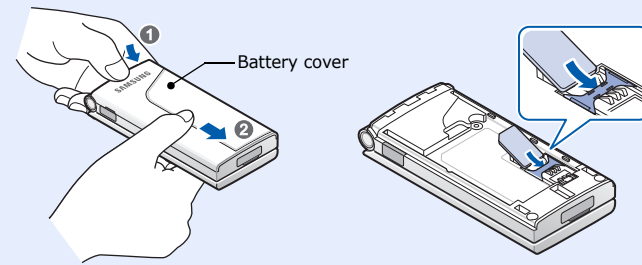


• Depending on the software installed or your service provider or country, some of the descriptions in this guide may not match your phone exactly.  
• Depending on your country, your phone and accessories may appear different from the illustrations in this guide.

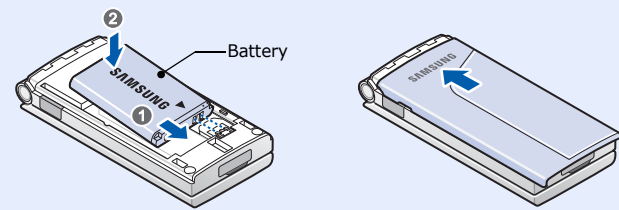
Printed in Korea  
Code No.: GH68-12365A  
English (SEA). 11/2006. Rev.1.0  
World Wide Web  
http://www.samsungmobile.com

## Installing the SIM card and battery

1. Remove the battery cover and insert the SIM card.

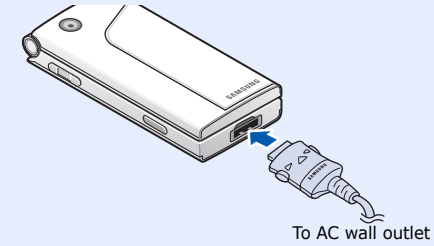


2. Install the battery and reattach the cover.

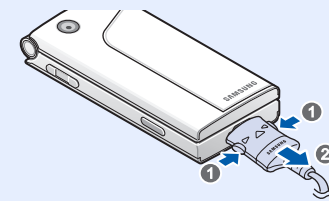


## Charging the battery

1. Plug the supplied travel adapter.

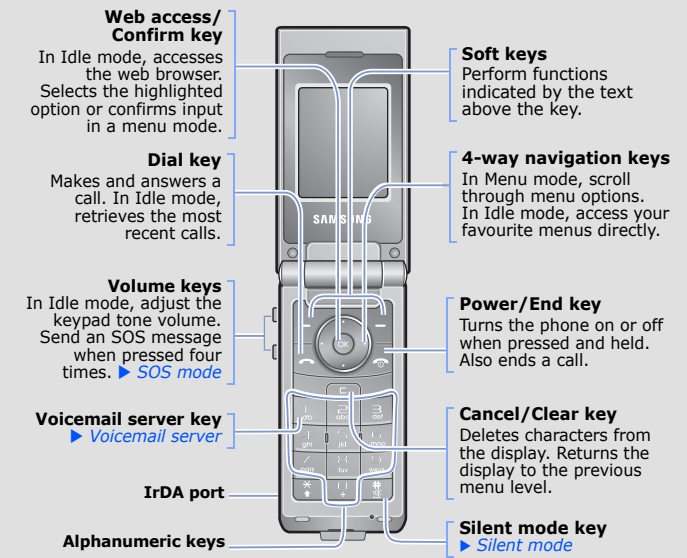


2. When charging is finished, unplug the adapter.



**Note:** Do not remove the battery from the phone without unplugging the adapter first. Otherwise, the phone may be damaged.

## Phone layout and key functions



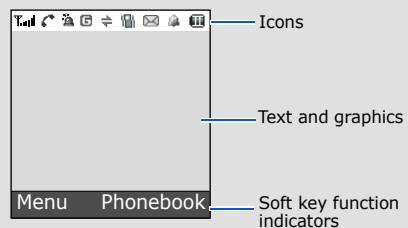
**Silent mode** Press and hold **#** in Idle mode to disable all sounds on the phone. To exit, press and hold this key again.

**Voicemail server** Press and hold **1** in Idle mode to access your voicemail server.

**SOS mode** With the phone closed, press the Volume keys four times in Idle mode to send an SOS message to preset phone numbers. Once the SOS message is sent, the phone will change to SOS mode and will receive calls only from the SOS message recipients until the SOS mode is cancelled. Upon receiving a call from the SOS message recipients, the phone will automatically answer the call, after one vibration, relaying the emergency situation to the caller.

## Display

Your phone is in Idle mode when you are not on a call or using a menu. You must be in Idle mode to dial a phone number.



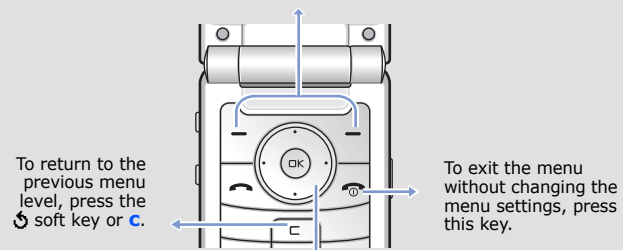
Your phone displays the following status indicators on the top of the screen:

Icon	Description
	Received signal strength
	Call in progress
	Out of your service area; you cannot make or receive calls except for emergency calls
	GPRS network
	Roaming network
	Call ringer set to vibrate
	Silent mode
	Mute mode
	Call diverting feature active
	IrDA feature active
	SOS message feature active
	New text message
	New multimedia message
	New voicemail message
	Alarm set
	Battery power level

## Using the menus

In Idle mode, press the **Menu** soft key to enter the main menu.

Labels at the bottom corners of the display show the current soft key functions. Press the left soft key (L) or right soft key (R) to perform the function indicated.



Use the 4-way navigation keys (↑, ↓, ←, →) as shortcuts to access your favourite menus.

1. In Idle mode, press the **Menu** soft key.
2. Select **Phone settings** → **Shortcuts**.
3. Select a key.
4. Select a menu to be assigned to the key.

To select or modify a menu or feature:

1. In Idle mode, press the **Menu** soft key.
2. Press the Navigation keys to reach a desired menu and then press the **Select** soft key or (OK).
3. If the menu contains any submenus, locate the one you want by pressing the Navigation keys. Press the **Select** soft key or (OK) to enter the submenu.  
If the selected menu contains additional submenus, repeat this step.
4. Press the Navigation keys to find the setting of your choice.
5. Press the **Select** soft key or (OK) to confirm your chosen setting.

### Shortcut numbers

You can quickly access the menu you want by using shortcut numbers. The shortcut number displays in front of the menu name in Menu mode.

## Switching on or off the phone

1. Press and hold for more than one second to switch on the phone.
2. To switch off the phone, press and hold for more than two seconds.

## Changing the display language

1. In Idle mode, press the **Menu** soft key.
2. Select **Phone settings** → **Language**.
3. Select a language.

## Making a call

1. In Idle mode, enter an area code and phone number, and press .
2. When you want to end the call, press .

## Answering a call

1. When the phone rings, press the **Accept** soft key or to answer a call.  
To reject the call, press the **Reject** soft key or .
2. To end the call, press .

## Menu map

<b>1. SIM AT*</b>	<b>5. Messages</b>	<b>9. Phone settings</b>
<b>2. Call records</b>	5.1 Text messages	9.1 Infrared activate
2.1 Missed calls	5.2 Multimedia messages	9.2 Display settings
2.2 Received calls	5.3 Push messages	9.3 Greeting message
2.3 Dialed calls	5.4 SOS messages	9.4 Own number
2.4 Delete all	<b>6. Funbox</b>	9.5 Language
2.5 Call time	6.1 WAP browser	9.6 Security
2.6 Call cost*	6.2 FM radio	9.7 Extra settings
<b>3. Network services</b>	6.3 Games	9.8 Shortcuts
3.1 Call diverting	6.4 Sounds	9.9 Volume key
3.2 Call barring	6.5 Images	9.0 Reset settings
3.3 Call waiting	6.6 Delete all	
3.4 Network selection	6.7 Memory status	
3.5 Caller ID	<b>7. Organiser</b>	
3.6 Closed user group	7.1 Alarm	
3.7 Band selection	7.2 Calendar	
<b>4. Sound settings</b>	7.3 Time & Date	
4.1 Ring tone	7.4 Calculator	
4.2 Ring volume	7.5 To do list	
4.3 Alert type	7.6 Voice memo	
4.4 Keypad tone	7.7 Currency exchange	
4.5 Message tone	<b>8. Camera</b>	
4.6 Alert on call	8.1 Take photos	
4.7 Folder tone	8.2 My photos	
4.8 Power on/off	8.3 Memory status	
4.9 Extra tones		

\* Shows only if supported by your SIM card.

## Adjusting the volume

1. In Idle mode, press the **Menu** soft key.
2. Select **Sound settings** → **Ring volume**.
3. Press **Up** or **Down** to adjust the volume level.
4. Press the **OK** soft key.

While a call is in progress, press the Volume keys to adjust the earpiece volume.

## Changing a ringtone for calls

1. In Idle mode, press the **Menu** soft key.
2. Select **Sound settings** → **Ring tone**.
3. Select a ringtone.

## Redialling recent numbers

1. In Idle mode, press .
2. Press **Up** or **Down** to scroll to the number you want.
3. Press to dial the number.

## Entering text

### Changing the text input mode

In a text input field, press the right soft key and select the language mode you want.

- **T9** : T9 mode
- **A** : ABC mode
- **1** : Number mode
- **None** : Symbol mode

### T9 mode

1. Press **2** to **9** to start entering a word. Press each key once for one letter.  
Example: To enter "Hello" in T9 mode, press **4**, **3**, **5**, **5**, and **6**.  
T9 predicts the word that you are typing, and it may change with each key that you press.
2. Enter the whole word before editing or deleting characters.



## Free Manuals Download Website

<http://myh66.com>

<http://usermanuals.us>

<http://www.somanuals.com>

<http://www.4manuals.cc>

<http://www.manual-lib.com>

<http://www.404manual.com>

<http://www.luxmanual.com>

<http://aubethermostatmanual.com>

Golf course search by state

<http://golfingnear.com>

Email search by domain

<http://emailbydomain.com>

Auto manuals search

<http://auto.somanuals.com>

TV manuals search

<http://tv.somanuals.com>