



- [Safety Instructions](#)
- [Overview](#)
- [Connecting](#)
- [Using](#)
- [Applications](#)
- [Specifications](#)
- [Troubleshooting](#)



Digital Photo Frame SPF-85V SPF-86V



Acrobat
Reader



Frame
Manager
XP



Frame
Manager
Vista



Regulatory



PDF
manual



Frame
Manager
PDF
Manual



Digital Photo Frame ○○○○○○○○○○ SPF-85V SPF-86V

[Safety Instructions](#) | [Overview](#) | [Connecting](#) | [Using](#) | [Applications](#) | [Specifications](#) | [Troubleshooting](#)

☰ Safety Instructions

| [Safety Symbols](#) | [Power](#) | [Installation](#) | [Using and Cleaning](#) |

▣ Safety Symbols

✘ Make sure to follow the directions below to prevent accidents and damage to the product.



Warning

Failure to follow the accompanying directions may lead to serious injury or death.



Attention

Failure to follow the accompanying directions may lead to minor personal injury or property damage.

| [Safety Symbols](#) | [Power](#) | [Installation](#) | [Using and Cleaning](#) |

▣ Power

✘ The images here are for reference only, and are not applicable in all cases (or countries).

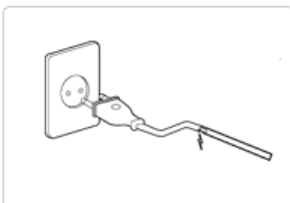


Warning



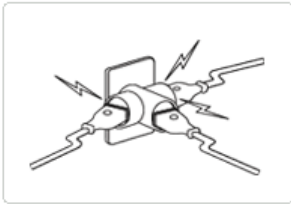
▶ Insert the power plug correctly until it is firmly in place.

- Failing to do so, may cause fire.



▶ Do not use a damaged power plug, cord or outlet, as this may cause electric shock or fire.

▶ Do not touch the power plug with wet hands, as this may cause electric shock.



- ▶ Do not connect more than one appliance to a single outlet, as an overheated outlet may cause fire.



- ▶ Do not use force to pull the power cord. Don't place anything heavy on the power cord, as this may cause electric shock or fire.



- ▶ Make sure to turn the power off and disconnect the power plug from the outlet before moving the product. Make sure to disconnect the connection cables from other devices as well.
 - Moving the product without disconnecting the power cord may damage it while moving, and may cause electric shock or fire.

 **Attention**



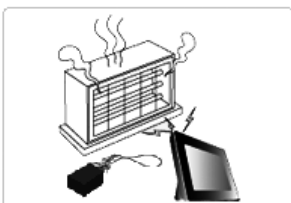
- ▶ Hold and pull out the plug by its body when disconnecting it from the outlet, as pulling the plug out by the cord may cause it to be damaged.
 - Failing to do so, may cause fire, or the product may not turn on normally.



- ▶ Ensure that the power plug is disconnected before cleaning the product.
 - Failing to do so, may cause electric shock or fire.



- ▶ Keep the product away from places exposed to oil, smoke or moisture; do not install inside a vehicle.
 - This may cause a malfunction, electric shock or fire.
 - In particular, avoid operating the monitor near water or outdoors where it could be exposed to snow or rain.



- ▶ Do not install the product near any heating appliance.
 - There is a risk of fire.

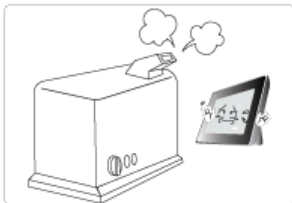
Installation**Warning**

▶ When installing the product on a cabinet or shelf, do not let the front end of the product project beyond its front edge.

- Failing to do so, may cause the product to fall, resulting in a product malfunction or personal injury.



▶ Do not place the power cord near a heater, as the power cord may melt, causing electric shock or fire.



▶ Do not install the product in a car or a location exposed to oil, smoke, moisture, water, or rainwater.

- Any contact of these materials with the product may cause electric shock or fire.



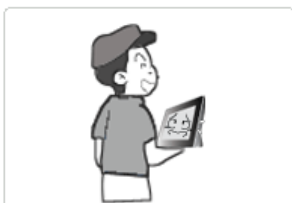
▶ Disconnect the power plug when there is thunder or lightning.

- Failing to do so, may cause electric shock or fire.

Attention

▶ Place the product down gently when installing it.

- Failing to do so may cause product damage or personal injury.



▶ Avoid dropping the product when moving, as this may cause product damage or personal injury.



▶ Do not install the product in a location easily reached by children.

- As the product may fall and cause personal injury.

Using and Cleaning

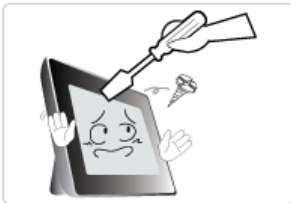


Warning



- ▶ Do not insert any metal objects such as forks, wire, or gimlets, or flammable items such as paper or matches into the ports at the back of the product, as this may cause electric shock or fire.

- If water or any foreign substance enters the product, make sure to turn the product off and disconnect the power plug from the outlet, and contact a [service center](#).



- ▶ Never disassemble, repair, or modify the product yourself.

- If you need to repair your product, contact a [service center](#). An attempt at repairing this product may cause electric shock or fire.

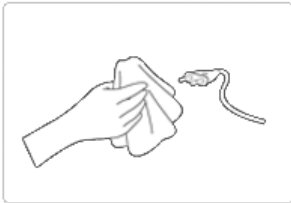


Attention



- ▶ If you hear a strange sound, smell anything burning, or see smoke, disconnect the power plug immediately and contact a [service center](#).

- Failing to disconnect the power plug may cause electric shock or fire.



- ▶ Always remove dust and water from the pins and connections of the power plug.

- Failing to do so may cause electric shock or fire.



- ▶ When cleaning the product, first disconnect the power plug and clean it with a soft, dry cloth.

- Do not use any chemicals such as benzene, alcohol, thinners, mosquito repellent, aromatic, lubricant, detergent or wax.



- ▶ When not using the product for a long time, make sure to disconnect the power plug.

- Heavy accumulated dust may cause electric shock or fire.



- ▶ If the product needs to be installed in a location that doesn't satisfy general conditions, make sure to contact one of our service engineers about the installation as the product may encounter serious quality problems due to its environment.

- This refers to locations exposed to conditions such as heavy fine dust, chemicals, high or low temperature, moisture, or when the product needs to be used continually without a break over a long time.

- ▶ If the product has been dropped or the product casing is damaged, turn it off and



disconnect the power plug.

- Using the product without verifying that it has not been damaged may cause electric shock or fire. Please contact a [service center](#).

**Correct Disposal of This Product
(Waste Electrical & Electronic Equipment) - Europe only**



(Applicable in the European Union and other European countries with separate collection systems)

This marking shown on the product or its literature, indicates that it should not be disposed with other household waste at the end of its working life. To prevent possible harm to the environment or damage to health from uncontrolled waste disposal, please separate this from other types of waste and recycle it responsibly to promote the sustainable reuse of material resources.

Household users should contact either the retailer where they purchased this product, or their local government office, for details of where and how they can take this item for environmentally safe recycling.

Business users should contact their supplier and check the terms and conditions of the purchase contract. This product should not be mixed with other commercial wastes for disposal.

Correct disposal of batteries in this product- Europe only



(Applicable in the European Union and other European countries with separate battery return systems.)

This marking on the battery, manual or packaging indicates that the batteries in this product should not be disposed of with other household waste at the end of their working life. Where marked, the chemical symbols Hg, Cd or Pb indicate that the battery contains mercury, cadmium or lead above the reference levels in EC Directive 2006/66. If batteries are not properly disposed of, these substances can cause harm to human health or the environment.

To protect natural resources and to promote material reuse, please separate batteries from other types of waste and recycle them through your local, free battery return system.

Using, copying or reproducing the whole or part of this manual without written permission from Samsung Electronics is prohibited. The content of this manual is subject to change without prior notice. ©2008 All rights reserved. Samsung Electronics.

Digital Photo Frame



Digital Photo Frame ○○○○○○○○○○ SPF-85V SPF-86V

- Safety Instructions
- Overview
- Connecting
- Using
- Applications
- Specifications
- Troubleshooting

Overview

- Features
- Components
- Front
- Back
- Side

Features

- 01 Expansion of built-in memory using memory cards. Instant view of stored images.
- 02 Background music function.
- 03 Can be used with the battery for a specific period of time without being connected to a power outlet.
- 04 Provides a Mini-Monitor function.
- 05 Stylish Design
 - ♦ A premium, stylish design that can be used as a decoration on a desk or table.
 - ♦ A rotating stand that allows vertical/horizontal placement.

- Features
- Components
- Front
- Back
- Side

Please check that all components are contained in the delivered package.
 If anything is omitted, contact the local distributor where the product was purchased. For optional items, contact a [service center](#).
 Never use a power adapter other than the adapter provided with the product.

Components



Digital Photo Frame
 (The product color and shape may vary depending on the model.)

Manual



Quick Start



Warranty
(Not available in all locations)



User Manual

Cables



Power cord



USB cable
(A-mini B type)



Power Adapter

| [Features](#)

| [Components](#)

| [Front](#)

| [Back](#)

| [Side](#)

Front

※ The product color and shape may vary depending on the model.



※ This product is a touch type product. If you lightly touch the button on the right of the product, the button light is turned on. When the button light is turned on, you can then operate each button's menu.

- | | |
|-------------------------------|--|
| 1 [MENU] Menu Button | Displays the menu window at the bottom left corner of the screen. |
| 2 [▲] Up Button | Adjusts the sound volume when playing music files or movies. |
| 3 [◀] Left Button | Used for moving left. |
| 4 [▶] Right Button | Used for moving right. |
| 5 [▼] Down Button | Used for moving down. |
| 6 [G] Enter Button | Used for selection. |
| 7 [↶] Back Button | Return to the previous menu. |
| 8 [⏮] Slideshow Button | Play or pause a Slideshow.
※ When playing a slideshow by pressing the [⏮] button, the photos in the folder of the last played photo are played. If the photos in the folder of the last played photo have been removed, they are automatically searched for and then played in a slideshow. |

| [Features](#)

| [Components](#)

| [Front](#)


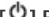

| [Back](#)

| [Side](#)

Back

※ The product color and shape may vary depending on the model.





- 1**  **DC -In Jack** Connect the power adapter to this jack.
Connect the power cord to the power terminal of the power adapter.
- 2**  **Power Button** Turns the product on or off.
Hold down the power button at the right of the product for about 2 seconds.
- 3** **Stand** You can use the product in a vertical or horizontal direction by using the rotating stand.
- 4** **Sliding Prevention Holder** Supports the product so that it stays firmly in place on slippery surfaces.
- 5** **Service terminal** This is a terminal for servicing the product only. Do not operate it arbitrarily.
- 6**  **Kensington lock** The Kensington lock is a device used to physically secure the system when using it in a public place.
(The locking device has to be purchased separately.)

| [Features](#) | [Components](#) | [Front](#) | [Back](#) | [Side](#) |

Side

✗ The product color and shape may vary depending on the model.



- 1** **Speaker** You can listen to sound without connecting an additional speaker.
- 2**  **Headphone connection jack** You can listen to sound by connecting headphones or earphones to the product.
- 3** **MEMORY CARD** Allows you to insert an optional memory card. (Only applicable for SD/MS card)
- 4**  Connect a PC or an external device using a USB cable.
A **Up stream terminal** Connect your Digital Photo Frame to a PC's USB terminal

with a USB cable.

✘ Make sure to use the USB cable (A-mini B type) provided with the product when connecting your digital photo frame to a PC through the up stream terminal.

B Down stream terminal Connect your Digital Photo Frame to a USB-supported storage device.

Using, copying or reproducing the whole or part of this manual without written permission from Samsung Electronics is prohibited. The content of this manual is subject to change without prior notice. ©2008 All rights reserved. Samsung Electronics.

Digital Photo Frame



Digital Photo Frame ○○○○○○○○○○ SPF-85V SPF-86V

[Safety Instructions](#) | [Overview](#) | [Connecting](#) | [Using](#) | [Applications](#) | [Specifications](#) | [Troubleshooting](#)

Connecting

| [Power](#) | [USB](#) | [Memory Card](#) |

▶ Connecting the Power



- 1 Connect the adapter cable to the power terminal on the back of the product.
- 2 Connect the power cord to the power adapter.
- 3 Plug the power cord for the product into a nearby outlet.
- 4 Press the [⏻] button to turn on the power.

| [Power](#) | [USB](#) | [Memory Card](#) |

▶ Connecting via USB



1 Up Stream Terminal

Used to connect your digital photo frame to a PC.

- ✘ When connecting your digital photo frame to a PC through the up stream terminal, make sure to use the USB cable provided with the product.

2 Down Stream Terminal

Used to connect an external USB-supporting device to your digital photo frame.

- ✘ Some USB devices may not support Digital Photo Frame.
- ✘ This product does not support USB card readers. Only USB storage is supported.
- ✘ The external devices connected to your Digital Photo Frame are not recognized by your PC.
- ✘ When connecting an external device to the down stream terminal, use the USB cable provided with the external device. (For more information on external devices and their cables, contact a relevant service center.)
- ✘ Samsung carries no liability for external device malfunctions caused by using any cable except the standard cables specified for each device.
- ✘ Some external products provide a cable that does not meet USB standards. Hence, they may cause a malfunction.
- ✘ If an external storage device does not work normally when connected to your digital photo frame, try to connect it to your PC. If it still does not work normally when connected to your PC, contact a service center for that external device or your PC.



A Connect to the upstream jack of your digital photo frame.

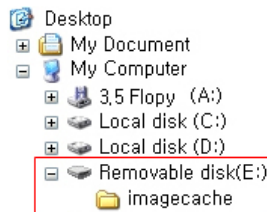
B Connect the USB terminal of your PC.

+ Folder Structure

When connecting this product to your PC, it is displayed as a removable disk (E:), as shown in the figure below.

You can save and play all music and movie files in the following folders.

You can also add and delete folders as required. (However, if you delete the following default folders, they are automatically created when your product is turned on again.)



imagecache

Web Photos (photos from Windows Live Space or RSS) are saved according to the remaining size of the Frame Memory. If you copy photos from a PC to the imagecache folder arbitrarily, they will not be displayed on the digital photo frame.

- ✘ The capacity of this product is 64 MB.
If the capacity is exceeded, no further files can be stored.
- ✘ Do not turn off the product while saving, playing, or deleting a file.
- ✘ The volume name of the removable disk (for example, E:, F:, G:) may differ depending on your computer environment.

| [Power](#) | [USB](#) | [Memory Card](#) |

Connecting a Memory Card



1 MEMORY CARD

Slide the card in the direction marked on the top of the card.

✘ Removing the memory card while playing MP3s, movies, or photos, may cause the product to operate abnormally. In this case, turn the product off and on.

Using, copying or reproducing the whole or part of this manual without written permission from Samsung Electronics is prohibited. The content of this manual is subject to change without prior notice. ©2008 All rights reserved. Samsung Electronics.

Digital Photo Frame



Digital Photo Frame ○○○○○○○○○○ SPF-85V SPF-86V

[Safety Instructions](#) | [Overview](#) | [Connecting](#) | [Using](#) | [Applications](#) | [Specifications](#) | [Troubleshooting](#)

- [↑ TOP](#)
- [↶ MAIN](#)
- [↶ ↷](#)

Using

✘ If no button is pressed for ten (10) minutes, Slideshow or Clock mode is activated. However, if a music file is being played, Clock mode is activated and the filename of that music file is displayed. You can switch to Clock mode even when the movie is paused. In some cases, you can switch to the Movie List screen.

✘ This product is a touch type product. If you lightly touch the button on the right of the product, the button light is turned on. When the button light is turned on, you can then operate each button's menu.

[| User Guide](#) | [Photo](#) | [Music](#) | [Movie](#) | [Clock & Alarm](#) | [InfoLink](#) | [Settings](#) |

User Guide

Buttons

Menu	Description
MENU	Enters or exits a menu. Hold the MENU button down for more than five (5) seconds. All the lights of the buttons will blink twice and the button lock function will be activated. To clear the button lock function, hold the MENU button down again for more than five (5) seconds.
▲, ▼, ◀, ▶	Moves around the items and adjusts the value.
	Selects a function.
	Returns to the previous screen. ✘ Hold down this button for two (2) seconds to return to the Main screen.
	Play or pause a Slideshow. When playing a slideshow by pressing the button, the photos in the location of the last played photo are played. If the photos in the location of the last played photo have been removed, they are automatically searched for and then played in a slideshow.

Screen Status Indications

Display	Description
	This is displayed differently according to the signal strength when connected to a network. If not connected to a network, is displayed.
	Displayed when a PC is connected or there is a PC which can be connected to.
	Displayed only when a network is connected and Internet access is available. You can only view RSS or Live Space photos if this icon is displayed.
	Displayed when a USB device is connected.
	Displayed when an SD/MS memory card is connected.

Battery Indicators

Display	Description
	Displayed when the battery is being used with the power cable connected and the battery is being charged.
	Displayed when the battery is fully charged and the power cable is connected.



Displayed when the battery is fully charged.



Displayed when about 25% of the battery is consumed.



Displayed when about 50% of the battery is consumed.



Displayed when about 75% of the battery is consumed.



Displayed when about 95% of the battery is consumed. When this occurs, the screen switches to the main screen immediately and the discharged battery icon blinks at the center of the screen and the power is turned off. While the discharged battery icon is blinking, you cannot enter a sub-menu.

- ✘ It takes about two (2) hours to charge the battery fully when it is completely discharged.
- ✘ Playing a movie can continue for about thirty (30) minutes and a slideshow for about forty (40) minutes in the default state (volume 70, brightness 70) when the battery is fully charged.
- ✘ The battery usage time may differ according to the settings (Brightness, Volume etc.).
- ✘ When the internal battery is fully charged and the power adapter is disconnected for more than 3 days, the internal battery will be discharged. If the internal battery is fully discharged, please connect the power adapter for recharge and set the time again.
- ✘ The battery lifetime decreases as the product usage time increases.
- ✘ The rechargeable battery incorporated in this product is not user replaceable. For information on its replacement, please contact your service provider.

Photos

➤ When selecting a folder



- ✘ If you press the Menu button, the menu of the selected item is displayed on the screen.

Menu	Description
Open	Opens the selected folder.
Copy	Copies the selected folder.
Delete	Deletes the selected folder.

➤ The menu displayed when selecting a thumbnail.



✘ If you press the Menu button, the menu of the selected item is displayed on the screen.

Menu	Sub-Menu Description
Start Slideshow	Play or pause a Slideshow.
Copy	Copies the selected file to a different storage device. (Activated when a storage device is connected.)
Copy All Files	Copies all files to a different storage device. (Activated when a storage device is connected.)
Delete	Deletes the selected file.
Delete All Files	Deletes all files.
Set as Background	Sets the selected image as the background of the main screen. At this time the mode for the background is automatically changed to Custom mode.

✘ When copying a photo from an external memory storage device (SD/MS, USB memory) to the Frame Memory, if [Settings]-[Options]-[Frame Memory Copy] is set to [Resized], the size (screen quality) of the photo is automatically reduced before saving it, to fit it to the screen of your digital photo frame, and the EXIF (camera related information) saved in the photo is removed. Therefore, make sure to only use the photos saved on the Frame Memory with the digital photo frame.

✘ It may take a long time if a lot of files are copied at the same time.

➤ The menu displayed when selecting a thumbnail (PC, Live Space, RSS).



✘ If you press the Menu button, the menu of the selected item is displayed on the screen.

Menu	Sub-Menu Description
Start Slideshow	Play or pause a Slideshow.
Copy	Copies the selected file to a different storage device. (Activated when a storage device is connected.)
Copy All Files	Copies all files to a different storage device. (Activated when a storage device is connected.)
Set as Background	Sets the selected image as the background of the main screen. At this time the mode for the background is automatically changed to Custom mode. ♦ All Photos, Folder, Playlist, Tags, Date, Rating
Browsing Mode	Selects the category to arrange the photos by. ✘ [Browsing Mode] is only displayed on a PC. The sub-menus of a mode are subjected to each mode.

➤ Slideshow Menu



✘ This product can only support up to 4,000 pictures. If there are more than 4,000 pictures, slideshow will not be played for the remaining pictures.

Menu	Sub-Menu	Detailed Menu Description
Stop Slideshow		Pauses or resumes the slideshow.
	Transition	<ul style="list-style-type: none"> ◆ No Effect, Fade, Blind, Cross Comb, Checker, Slide, Wipe, Silk, Wheel, Circle, Box In/Out, Diamond, Plus, UnCover, Push, Stairs, Random
		Selects a play effect.
	Speed	<ul style="list-style-type: none"> ◆ Fast, Normal, Slow
		Selects a play speed.
Slideshow Settings	Mode	<ul style="list-style-type: none"> ◆ All photos, Photos in Folder, Shuffle all photos, Shuffle photos in Folder, Repeat one photo
		Selects the play mode.
		✘ This cannot be used during a PC, Live Space, or RSS photo slideshow.
	Display Clock	<ul style="list-style-type: none"> ◆ Off, On
		Selects whether to play a slideshow and show the current time at the same time.
	InfoLink	<ul style="list-style-type: none"> ◆ Off, On
		You can set the widget to appear in the slideshow screen.
Brightness		<ul style="list-style-type: none"> ◆ 0~100
		You can adjust the brightness.
Rotation		You can rotate the monitor screen to 90°, 180° and 270°.
		<ul style="list-style-type: none"> ◆ Original Fit, Auto Fit, Fit to Width, Fit to Screen
		You can select how to adjust the size of the photos when displaying them on the screen.
Screen ratio		Original Fit - When the photo size is larger than the screen size, it is displayed to fit the screen size.
		Auto Fit - Photos are fit to the screen size. A horizontal or vertical part of a photo may be cut but there is no distortion.
		Fit to Width - Photos are fit to the screen width. A horizontal or vertical part of a photo may be cut but there is no distortion.
		Fit to Screen - Photos are fit to a resolution of 800*600. (The photo image may be distorted)
Delete		Deletes a photo being displayed in the slideshow.
		✘ This will not function during a PC, Live Space, or RSS photo slideshow.
Set as Background		Sets the currently selected image as the background of the main screen.
		<ul style="list-style-type: none"> ◆ On, Off, Music Settings
Background Music		Select [On] of [Background Music].
		Then select [Music Settings] of [Background Music] by pressing the MENU button and select a music file stored on the Frame Memory or a connected external memory device.
		When the product is used for the first time, the built-in music files are used as the background music.
		When the next slideshow is performed using the [Slideshow] button, the last played background music file is played as the background music.
		(The location priority of the music files to be played for the background music is: "Location of the last played background music file → [Frame Memory] → [USB] → [SD/MS]" .

Direct Functions

Menu

Description

Download from www.Somanuals.com. All Manuals Search And Download.

- MENU Opens the on-screen menu and exits from the menu.
- ▶ Plays the next file.
- ◀ Plays the previous.
- ▲ ▼ Adjusts the volume.
- 🖼️ 🖼️ Play or pause a Slideshow.

📁 Music

➤ The menu displayed when selecting a list.



✗ If you press the Menu button, the menu of the selected item is displayed on the screen.

Menu	Sub-Menu Description
Play Music	Plays a file. <ul style="list-style-type: none"> ♦ All Music Files, Music Files in Folder, Shuffle all Music Files, Shuffle Music Files in Folder, Repeat One Music
Play Mode	Selects the play mode.
Copy	Copies the selected file to a different storage device.
Copy All Files	Copies all files to a different storage device.
Delete	Deletes the selected file.
Delete All Files	Deletes all files.

➤ The menu displayed while playing music.



✗ If you press the Menu button, the menu of the selected item is displayed on the screen.

Menu	Sub-Menu Description
	<ul style="list-style-type: none"> ♦ All Music Files, Music Files in Folder, Shuffle all Music Files, Shuffle Music Files in Folder, Repeat One

Play Mode Music
 Selects the play mode.

Direct Functions

Menu	Description
MENU	Opens the on-screen menu and exits from the menu.
▶	Plays the next file. If you hold down the button for a long time, the Fast Forward function operates.
◀	Plays the previous. If you hold down the button for a long time, the Rewind function operates.
▲ ▼	Adjusts the volume.
⏮	Plays or Pauses a file.
⏭	Start Slideshow.

| [User Guide](#) | [Photo](#) | [Music](#) | [Movie](#) | [Clock & Alarm](#) | [InfoLink](#) | [Settings](#) |

Movies

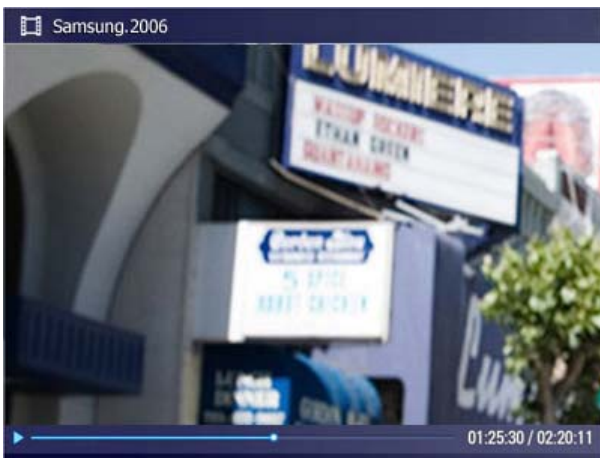
The menu displayed when selecting a list.



✘ If you press the Menu button, the menu of the selected item is displayed on the screen.

Menu	Sub-Menu Description
Play Mode	♦ All Movies, Movies in Folder, Shuffle all Movies, Shuffle Movies in Folder, Repeat One Movie Selects the play mode.
Copy	Copies the selected file to a different storage device.
Copy All Files	Copies all files to a different storage device.
Delete	Deletes the selected file.
Delete All Files	Deletes all files.

The menu displayed while playing a movie.



✘ If you press the Menu button, the menu of the selected item is displayed on the screen.

Menu	Sub-Menu	Description
Play Mode	<ul style="list-style-type: none"> All Movies, Movies in Folder, Shuffle all Movies, Shuffle Movies in Folder, Repeat One Movie 	Selects the play mode.
Brightness	<ul style="list-style-type: none"> 0~100 	You can adjust the brightness.

Direct Function

Menu	Description
MENU	Opens the on-screen menu and exits from the menu.
▶	Plays the next file. If you hold down the button for a long time, the Fast Forward function operates.
◀	Plays the previous. If you hold down the button for a long time, the Rewind function operates.
▲ ▼	Adjusts the volume.
⏮	Plays or Pauses a file.
⏭	Start Slideshow.

[User Guide](#) | [Photo](#) | [Music](#) | [Movie](#) | [Clock & Alarm](#) | [InfoLink](#) | [Settings](#) |

Clock & Alarm



✘ If you press the Menu button, the menu of the selected item is displayed on the screen.

Menu	Sub-Menu	Detailed Menu	Description
Date and Time	<ul style="list-style-type: none"> Month, Day, Year, Hours, Minutes, am/pm (when the Time Format is set to 12 Hours). Month, Day, Year, Hours, Minutes (when the Time Format is set to 24 Hours). 		Sets the date and time.
Time Zone		<ul style="list-style-type: none"> Off, On 	You can select a time zone.

Daylight Saving Time You can enable or disable the daylight saving time.

- ◆ [Auto, Manual, Update Time Now](#)

Internet Time Update Select whether to update the system time of your Digital Photo Frame with the time information received through the Internet.

- ◆ [12 Hours, 24 Hours](#)

Time Format For the Time Format, you can select 12 Hours or 24 Hours. If you select 24 Hours, am/pm is not displayed.

- ◆ [YYYY/MM/DD, MM/DD/YYYY, DD/MM/YYYY](#)

Date Format You can select the format in which the date is displayed.

- ◆ [Analog, Digital, Clock & Calendar, Clock & InfoLink](#)

Clock Type You can select the clock type.

- Activation ◆ [Yes, No](#)
- Set time ◆ [Manual, After 10min, After 20min, After 30min.](#)
- Hours ◆ [1~12](#)
- Minutes ◆ [00~59](#)
- Alarm
 - am/pm ◆ [am, pm](#)
 - Repeat ◆ [Once, Sat ~Sun, Mon~ Sat, Mon~ Fri, Everyday](#)
 - Sound ◆ [Sound 1, Sound 2, Sound 3](#)
 - Volume ◆ [0~100](#)

You can set an alarm.

[| User Guide](#) | [| Photo](#) | [| Music](#) | [| Movie](#) | [| Clock & Alarm](#) | [| InfoLink](#) | [| Settings](#) |

▶ InfoLink






▶ Setting (Widget On/Off)

✕ If you press the Menu button, the menu of the selected item is displayed on the screen.

Menu	Sub-Menu	Detailed Menu
		Description
Widget Auto Display	Home	◆ Off, On You can set the widget to appear in the first screen.
	SlideShow	◆ Off, On You can set the widget to appear in the slideshow screen.
	Clock	◆ Off, On You can set the widget to appear in the clock screen.

▶ Direct Functions

Menu Description





-  Selects a function.
-  Moves around the items.
-  Returns to the Main screen.

News



Menu	Sub-Menu	Description
News	<ul style="list-style-type: none"> ◆ Top News, Politics, Money, World, Life, Sports 	You can select the type of news topic to view.

Direct Functions

Menu	Description
	Moves up/down.
	Moves right/left.
	Moves the focus to the news list of the selected topic.
	Returns to the upper menu screen.

Stocks

Displays the stock information for the Favorite Stock Items, NYSE, and Nasdaq.

✘ You can register up to 20 stock symbols in the [Favorite Stocks] list. If you try to register more than 20 stock symbols, the message [You've exceeded the maximum of 20 stock symbols] is displayed.



Menu	Sub-Menu	Detailed Menu	Description
Favorite Stocks			Displays the stock information for the stock symbols registered as your favorite stock symbols. If there are no stock symbols registered, the Add/Del Favorite menu screen is displayed.
	NYSE		Displays the NYSE stock information.
	NASDAQ		Displays the NASDAQ stock information.

Stocks Add/Del Favorite



- ◀, ▶ Moves to the stock information you want to view (NYSE/Nasdaq/Favorites).
- ▲, ▼ Moves up/down.
- ☑ Adds or deletes the selected stock symbol.
- ↻ Returns to the upper menu screen.

Direct Functions

Menu	Description
Return to List	Returns to the list.
Add to Favorite Stocks	Adds the selected stock symbol to the Favorite Stocks.
Delete from Favorite Stocks	Deletes the selected stock symbol from the Favorite Stocks.
▲, ▼	Moves up/down.
◀, ▶	Moves right/left.
☑	Moves right / Selects an item.
↻	Returns to the upper menu screen.

Weather



Menu	Sub-Menu	Detailed Menu	Description
	My Weather	Today, Tomorrow, Recent Location	Today, Tomorrow : Displays the weather forecast for today and tomorrow. When selected, you can view the six (6)-day weather information for the default location. Recent Location : Displays a list of locations for which you have recently viewed weather information. If you selected a location from the list, you can view the six (6)-day weather information for it.
Weather	Top 100 Cities		Displays a list of 100 cities. You can select a city and view the six (6)-day weather information for it.
	Change Location		Select a location manually by entering the zip code. You can register the selected location to My Weather.

Direct Functions

Menu	Description
Return to my Weather	Returns to the My Weather screen.
Make this My Weather	Registers the selected item to My Weather. It becomes the default weather information to be provided and you are moved to the My Weather screen.
MENU	Sets Celsius/Fahrenheit.

- ▲, ▼ Moves up/down.
- ◀ Moves left or returns to the previous screen.
- ▶ Selects the item. Moves right.
- Ⓜ Selects the item.
- ↶ Returns to the previous screen.

➤ FrameChannel

- ✘ If you do not have a FrameChannel account, create your account on the FrameChannel website (<http://samsung.framechannel.com>).
- For information on how to configure the FrameChannel, refer to Applications > Setting up the FrameChannel.



Direct Functions

Menu	Description
▶, Ⓜ	Enters FrameChannel.
▲, ▼	Moves up/down.
◀, ↶	Returns to the previous (Main) screen.

- ✘ INFOLINK IS PROVIDED THROUGH AGREEMENT BETWEEN SAMSUNG AND THE CONTENT OWNER. INFOLINK MAY BE TERMINATED OR INTERRUPTED AT ANY TIME BY EITHER SAMSUNG OR THE CONTENT PROVIDER OR THROUGH TERMINATION OF THE AGREEMENT BETWEEN THEM.

| [User Guide](#) | [Photo](#) | [Music](#) | [Movie](#) | [Clock & Alarm](#) | [InfoLink](#) | [Settings](#) |

▣ Settings

➤ Settings



Menu	Sub-Menu	Detailed Menu	Description
	Network Settings		Sets the network. The network information you set is displayed at the bottom.
Network	Proxy Required	◆ Yes, No	You can set whether to use a proxy server.
	Language	◆ English, Deutsch, Español, Français, Italiano, Nederlands, Polski, Русский, Português, Svenska, Türkçe, 한국어	

You can select the language for the product.

Brightness ♦ 0~100

Adjusts the brightness of the screen.

Auto Rotation ♦ Off, On

Off : If you set the frame on its edge during a SlideShow, even if the sensor detects the change, the picture does not rotate accordingly.

On : If you set the frame on its edge, the sensor detects the change and rotates the picture automatically.

Button Sound ♦ Off, Low, Medium, High

Options

You can turn the button operating sound heard when operating the product on or off.

Volume ♦ 0~100

Adjusts the volume.

Frame Memory Copy ♦ Original Size, Resized

When copying a photo from an external memory storage device (SD/MS, USB memory) to the Frame Memory, if [Settings]-[Options]-[Frame Memory Copy] is set to [Resized], the size (screen quality) of the photo is automatically reduced before saving it, so that it can be fit to the screen of your digital photo frame, and the EXIF (camera related information) saved in the photo is removed.

Therefore, make sure to only use the photos saved on the Frame Memory with the digital photo frame.

Starting Mode ♦ Home, Last Mode, Slideshow

You can select the first screen to be displayed when the power is turned on.

Screen Saver ♦ Slideshow, Clock

You can select the screensaver type.

If no button is pressed for ten (10) minutes, the screensaver is activated.

OSD Color Theme ♦ Violet Style, Blue Style, Green Style, Orange Style

You can select a color theme for the menu background screen.

The default color theme is Blue Style.

Preferences

Home Background ♦ Default, Custom

You can set the background of the main menu screen.

Auto Picture On/Off ♦ Activation, Hours, Minutes, am/pm, Repeat

When the [Off Time] is reached, other operations are stopped and the screen is turned off. When the [On Time] is reached, the screen is turned on and the previous operating status persists.

If the screen is turned off as the time has reached the [Off Time], press any button except the Power button to display the screen again.

✘ If the product is being used as a Mini-Monitor or a Mass Storage device connected to your PC via a USB cable, the screen will not be turned off even if the Off Time is reached.

Firmware Update You can update the product by using a USB memory stick or memory card (SD/MS).
For the latest firmware file, visit www.samsung.com.

Reset Settings ♦ Yes, No

Update/Reset

Initializes the settings except for the time and the network settings.

Product Information ♦ Model, Firmware Version, Copyright

You can check the product information.

Web Configuration

01 Connect to the address (URL) in the [Web Configuration Address] item on the [Settings]-[Network] page of the Digital Photo Frame using Internet Explorer.

02 If connected, the Welcome page is displayed.
Enter the password in the [Web Configuration Password] item of the [Settings]-[Network] page of the Digital Photo Frame in the [Password] item on the Welcome page. Then click the [sign in] button.

Upper Menu	Sub Menu	Description
	♦ Password	
Welcome		Enter the password displayed in Management Password. Enables case-sensitive mode.
	♦ Now Playing	
Photo Frame		You can monitor the photos which are being displayed in the slide show at the same time.

Web Photos	<ul style="list-style-type: none">♦ Photo Feeds, Photos Windows Live Spaces <p>You can add or remove a website address from which you can receive photos.</p>
Storage	<ul style="list-style-type: none">♦ Photo Feeds, Photos Windows Live Spaces <p>You can check the size of the photos in the addresses listed in Web Photos.</p>
Settings	<ul style="list-style-type: none">♦ Basic, Administrator Password, Date and Time, Network Settings <p>You can enter and change the product name, administrator password, time, and network proxy server, etc.</p>
Help	<p>Displays the help section for using Samsung Photo Frame Web Configuration.</p>

Using, copying or reproducing the whole or part of this manual without written permission from Samsung Electronics is prohibited. The content of this manual is subject to change without prior notice. ©2008 All rights reserved. Samsung Electronics.

Digital Photo Frame



Applications

Initial Settings

- Settings for Sharing Photos on your PC - Configuring Your Windows
- Settings for Sharing Photos on your PC - Configuring Your Photo Frame
- Viewing the Photos from Windows Live Space
- Viewing the Photos via RSS
- Setting up Rating and Tags (VISTA:Tags, XP:Labels) on a PC
- Setting up the FrameChannel
- I want to update firmware.
- I want to connect to a monitor by using Mini-Monitor program.

Initial Settings

✘ To use the wireless sharing function provided with this product, Windows Vista must be running on your computer and a wireless LAN access point (AP) must be in your vicinity.

Windows XP

- 01 **Windows Media Player 11** or later must be installed.
- 02 **Digital Image Library Starter Edition (DISE)**
: This program allows you to change the ratings for the photos on your Digital Photo Frame via your PC.
- 03 Recommendations when using the Digital Photo Frame: Internet Explorer 7.0 or higher

1. Choose Your Language



Turn on your Digital Photo Frame and select a language. You can change the language via Settings -> Language.

2. Use Wi-Fi network?



Select whether to use a network.

3. Choose your Access Point



The AP list is displayed.
 Select the SSID you want to connect to in the [Choose your Access Point] screen. If the SSID you want to connect to is not displayed, refresh the SSID list by pressing [Refresh] and then select the SSID.

4. Choose Computer



The PC list is displayed. If the PC you want to connect to is not in the list, refresh the PC list by pressing [Refresh] and then select the PC.

5. Finish



The selected network and PC are displayed.
 You can select a menu after completing the operation.

✗ Ensure that the Settings are configured as shown below.

Otherwise, your PC may not be displayed in the list or you may not be able to connect to it.

- In Vista, select Control Panel > Network and Sharing Center > Customize. Check whether the Location type is set to Private.
- Select Digital Photo Frame from the Windows Media Player > Library > Media Sharing list. Check whether it is set to Allow.

▣ Settings for Sharing the Photos on your PC - Configuring Your Windows Vista

01 Adding Photos to the Library



01 Run Windows Media Player.

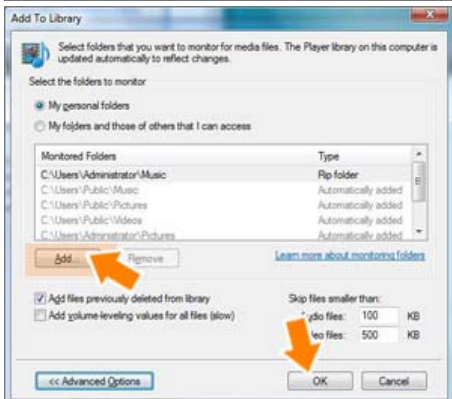


02 Click the [Library] tab at the top.

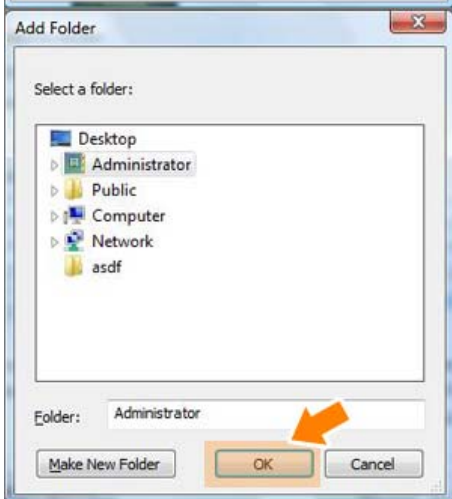
03 Click [Add To Library] in the [Library] tab.



04 In the [Add To Library] window, select [My personal folders] under the [Select the folders to monitor] section and select the folder containing photos and click [Add].



Select the folder to share and click [OK] to add it.



05 When you click [OK], the [Add To Library] window is closed and the [Add to Library by Searching Computer] is displayed. Wait until it finishes the operation and click [Close] when it is completed.



02 Checking Shared Photos

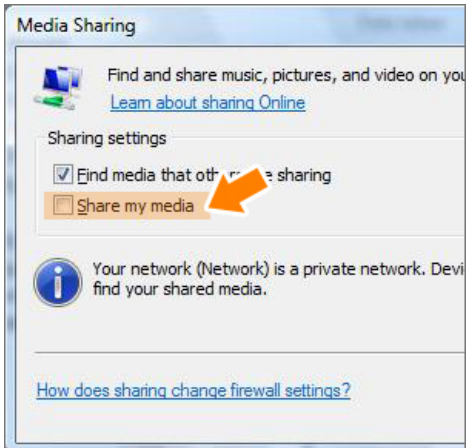
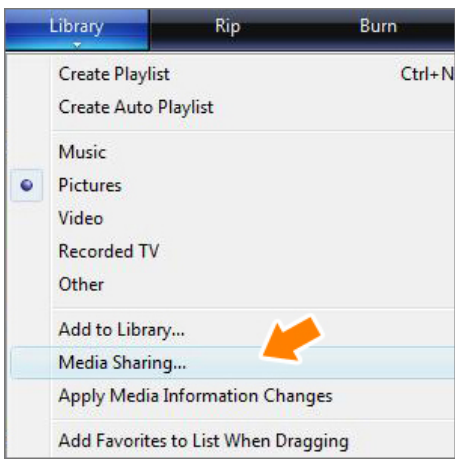


01 In the Windows Media Player, set the Category, which is under the [🔍] symbol at the top left, to [Picture].

02 In the [Library], select Recently added, All Pictures, Keywords, Date Taken, Rating, or Folder Settings and check whether the added photos exist in the library.

03 Sharing Settings for Accepting Connections from Your Photo Frame

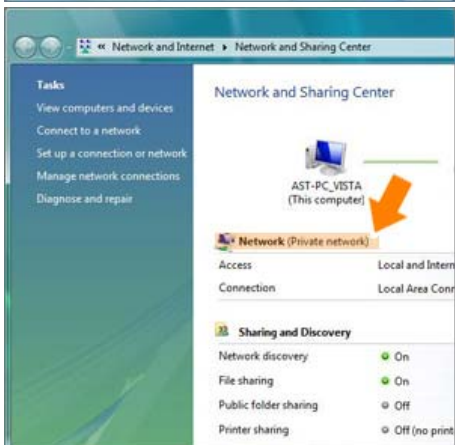
01 In the [Library] tab, click on [Media Sharing].



02 In the [Media Sharing] window, check the [Share my media] checkbox under [Sharing Settings].



03 If no [Available device] is displayed in the [Media Sharing] window, proceed to steps 4. If displayed, proceed to step 5.

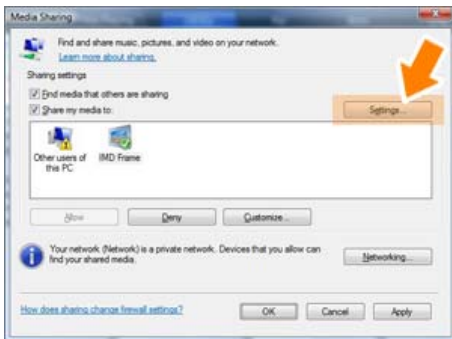


04 In the [Media Sharing] window, click [Networking] and check whether the current network is set to [Private network]. If not, set it to [Private Network].



05 If your network is a Private network, the [Available Device] list and the [Settings] button are displayed in the [Media Sharing] window.

06 In the [Media Sharing] window, click [Settings]. The [Media Sharing-Default Settings] window is displayed.



07 In the [Media Sharing-Default Settings] window, set the [Media Type] to [Picture], both [Star ratings] and [Parental ratings] to [All ratings] or a required rating under the [Default Settings] section. If you want to add a device or computer which tries to connect to the library to the list automatically, check the [Add new devices and computers automatically (not recommended)] checkbox.

✘ Only photos can be transmitted via PC sharing.

Settings for Sharing the Photos on Your PC - Configuring Your Photo Frame

01 Checking Network Connections



01 Check whether the Network icon is displayed at the left top of the Main screen.



02 If the Network icon is displayed, proceed to the **Checking Computer Connections** section described below. If it is not displayed, move to [Settings]-[Network]-[Network Settings].

✘ SSID : Service Set Identifier



03 Select the SSID you want to connect to in the [Choose your Access Point] screen. If the SSID you want to connect to is not displayed, refresh the SSID list by pressing [Refresh] and then select the SSID.

If you select this when the SSID is encrypted, a password input window is displayed. You can only be connected to the network if you enter the correct password.

02 Checking Computer Connections

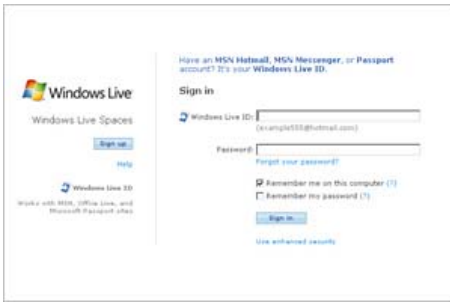
01 The PC list is displayed.
If the PC you want to connect to is not in the list, refresh the PC list by pressing [Refresh] and then select the PC.



02 The configured network and computer are displayed. You can select a menu once the completion window is displayed.

Viewing the Photos from Windows Live Space

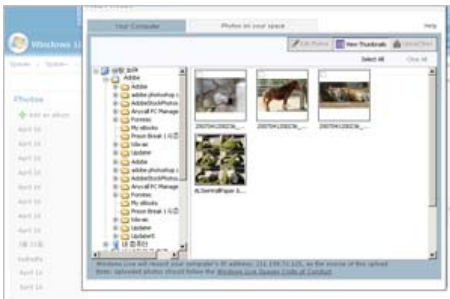
01 Checking Windows Live Space and Uploading Photos



01 If you have no MSN account (MSN Hotmail, MSN Messenger, Passport account), please create one. Go to and login to Windows Live Space (<http://spaces.live.com/>) with your MSN account.



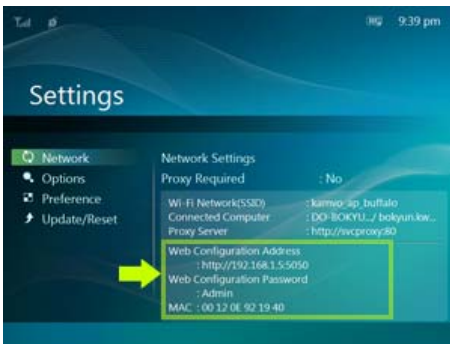
02 If you do not have a space, create a space and enter it.



03 In your space, change to edit mode. Add albums and photos by clicking on Add under the Photos category.

02 Setting up the Web Configuration

01 Connect to the address (URL) in the [Web Configuration Address] item on the [Settings]-[Network] page of the Digital Photo Frame using Internet Explorer.



02 If connected, the welcome page is displayed. Enter the password in the [Remote Configuration Password] item of the [Settings]-[Network] page of the Digital Photo Frame in the [Password] item on the Welcome! page. Then click the [sign in] button.

✘ You can change the password (default: Admin) in the Settings of the Samsung Photo Frame Web Configuration.



03 On the Samsung Photo Frame Web Configuration page, click the [Web Photos] tab and add the space address (for example, if it is 'http://test.space.live.com', you have only to type 'test:') to the URL input box for the Photos From Windows Live Spaces list and click [Add].



03 Checking your Space Photos on your Digital Photo Frame



01 First check the network connections. (Refer to Viewing the Photos Shared from Vista Windows on your Digital Photo Frame - What You Should Do on Your Digital Photo Frame - Checking Network Connections.)



02 In the Main screen of your Digital Photo Frame, go to [Photo]-[Windows Live Space]. A list of the spaces you have added to the Web Configuration will be displayed.

03 Select a space. A list of albums in the selected space will be displayed. Select an album, and thumbnails for the photos in the selected album will be displayed on the right.



▶ Viewing the Photos via RSS

01 Web Configuration



- 01 Go to the Web Photos page by following the description in the Settings Web Configuration section for Windows Live Space. Click [Web Photo]-[Photo Feeds] for the RSS Input window. In the RSS Input window, enter the RSS address and click [Add].

What is an RSS Address?

It is the address that appears in the address box of the web page (XML) displayed when clicking the FEED icon on a RSS service site where photos are uploaded.

02 Checking the Photos from RSS on Your Digital Photo Frame



- 01 In the Main screen of your Digital Photo Frame, go to [Photo]-[RSS and Web Feeds]. A list of feeds you have added to the Web Configuration will be displayed.
- 02 Select a feed from the list. Thumbnails for the photos in the selected feed will be displayed to the right.

▶ Setting up Rating and Tags (VISTA:Tags, XP:Labels) on a PC

01 Windows VISTA

- 01 Click Start - All Programs - Windows Photo Gallery to launch the Windows Photo Gallery.
- 02 If you select Info at the top of the Windows Photo Gallery screen, the photo information pane appears on the right.
- 03 Select a photo and change the **Rating** or **Tags** in the right information pane.



02 Windows XP



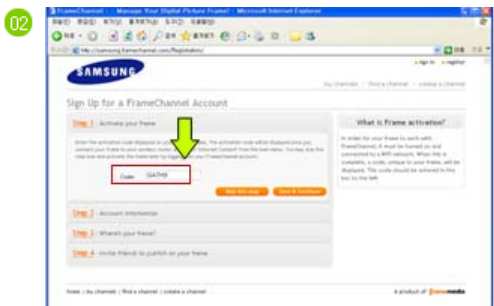
- 01 Click **Start - All Programs - Microsoft Digital Image Starter Edition 2006 - Microsoft Digital Image Starter Edition 2006 Library**.
- 02 The **Microsoft Digital Image Starter Edition 2006 Library** window appears.
- 03 Select a photo and configure the **Rating** and **Labels** for the selected photo at the bottom of the screen.

▶ Setting up the FrameChannel

✗ You must have a FrameChannel account to use the FrameChannel functions.

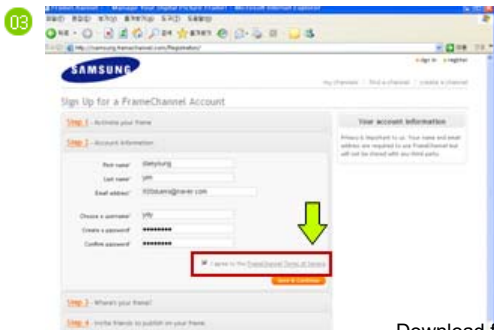


- 01 Visit the FrameChannel website (<http://samsung.framechannel.com>) and create your account by clicking the **Create an Account** button.



- 01 In the **Code** input box in the **Activate your Frame** page, enter the code in the [InfoLink] - [FrameChannel] Preview screen.
- 02 Click **Save & Continue** to move to the next step.

✗ If you enter a wrong code, your Digital Photo Frame cannot be connected to the FrameChannel. Each product has a different code. Make sure to check it and register it correctly.



- 01 **Account information:** Enter the required information. Then select the **I agree to the FrameChannel Terms of Service** checkbox and click **Save & Continue**.
- 02 **Step 3, Step 4 !!** Enter and save the required information.
- 03 Register channels using the **Find a Channel** and **Create a Channel** buttons.

I want to update firmware.

01 Preparations

- 01 Digital Photo Frame
 - 02 Firmware update file.
 - 03 USB memory card or external memory devices(SD/MS)
- ✘ Please visit www.samsung.com for the latest firmware update.

02 Connect USB memory card to PC

- 01 If you are ready, connect the USB memory card to your PC.
 - 02 Copy the firmware update file you downloaded to the USB memory card.
- ✘ (Make sure to copy the firmware update file to the root directory.)

03 Connect USB Memory Card to Digital Photo Frame

- 01 Remove the USB memory card from your PC, and connect it to your Digital Photo Frame.
- ✘ If your Digital Photo Frame is off, turn it on.

04 Updating

- 01 Select [Firmware Update] on the [Settings]-[Update/Reset] page.



- 02 After boot-up, turn your Digital Photo Frame off, remove the USB memory card, and turn your Digital Photo Frame on again, for maximum safety.
- ✘ Do not remove the USB, memory card during the update operation.
Do not press any key during the update operation.
Do not insert any other card during the update operation.
Do not turn your Digital Photo Frame off during the update operation.
You can identify whether the update operation has finished successfully or not by checking the firmware version of your Digital Photo Frame is changed to the version of the firmware update.

I want to connect to a monitor by using Mini-Monitor program.

The Digital Photo Frame not only allows you to appreciate photos but also provides an additional Mini-Monitor function. The Mini-Monitor is a function for using the Digital Photo Frame as an auxiliary monitor. Its usage is simple as the Digital Photo Frame connects to your PC via a USB cable. This function allows you to work more efficiently at your PC by using an additional monitor. To use your digital photo frame as a Mini-Monitor, first install the Frame Manager program. (However, please note that you can use only one digital photo frame as a Mini-Monitor.)

Installing Frame Manager

Frame Manager User's Manual

Using your digital photo frame as a Mini-Monitor.
Using your digital photo frame as Mass Storage.
Changing the current mode to another mode
Adjusting the brightness
Updating the firmware

✘ System Requirements

- OS : Windows XP SP2, Vista (32bit)
- System Processor Speed : 1.5 GHz
- USB : USB 2.0 Host Controller
- RAM : 256 MB or above

✘ Caution

1. When using Windows XP, Service Pack 2 must be installed.
It might not operate with any operating systems other than Windows XP SP2. We are not liable for problems that may occur when installing it on an operating system other than Windows XP SP2.
2. We recommend a CPU speed of 2.4 GHz or higher.
Your digital photo frame might not operate normally if the performance specifications of your PC are lower than the

recommendations.

3. Make sure to install it correctly as directed in the Installation Guide.
4. Do not use your Mini-Monitor as a primary monitor.

We are not liable for any problems that may occur if you do not follow the directions. If it is used as a primary monitor, the screen may be blank.

5. Make sure to use the provided USB cable.
6. When using your digital photo frame as a Mini-Monitor, all buttons except for the Power button will not operate.
7. Move the programs displayed and used on the Mini-Monitor to the primary monitor after you have finished using it.
8. For some video cards, the Mini-Monitor may not operate normally. In this case, set Hardware acceleration to None.
 - ✘ **To set Hardware acceleration to None:** Right-click on the Windows Desktop and select Properties from the displayed menu. The Display Properties window appears. Click Settings > Advanced > Troubleshoot tab. Move the Hardware acceleration slide to None.
9. You cannot use the Aero effect of Windows Vista while using the Mini-Monitor.
10. When using Windows Vista, some movies cannot be played using the Mini-Monitor.
11. If the video card's driver is updated while Frame Manager is installed, the Mini-Monitor function may not operate properly. In this case, remove Frame Manager and install it again.
12. If the rotation function of Frame Manager is used, the current location setting of Mini-Monitor may be changed. Even if the rotation function is used, the screen will not be shown to be rotating in the [Display Properties] window.

✘ Limitation and Recommendation

- **Limitation :** Hardware graphics acceleration such as DirectX or OpenGL is not supported on the Mini-MonitorDisplay as it would require the emulation of a graphics processor by your standard CPU which would not be favourable. Media players which are using DirectX will not work properly on Mini-Monitor Display.
 - > Example: GOM player, VLC Player
- **Recommendation :** Do not use/run DirectX or OpenGL application on Mini-Monitor display.

Using, copying or reproducing the whole or part of this manual without written permission from Samsung Electronics is prohibited. The content of this manual is subject to change without prior notice. ©2008 All rights reserved. Samsung Electronics.

Digital Photo Frame



Digital Photo Frame ○○○○○○○○○○ SPF-85V SPF-86V

- [Safety Instructions](#)
- [Overview](#)
- [Connecting](#)
- [Using](#)
- [Applications](#)
- [Specifications](#)
- [Troubleshooting](#)

Specifications

- [Specifications](#)
- [Supported Files](#)

Specifications

Items	Specifications	
Model Name	SPF-85V, SPF-86V	
Panel	Type	8 "(20 cm)TFT
	Resolution	800 x 600
	Contrast Ratio	400 : 1
	Interface	Digital 6 bit
Supported Formats	Photo	JPEG Max Image Resolution 3200x2400(8Mb) (Progressive,CMYK JPEG is not supported.)
	Movie	MPEG4 : Advanced Simple Profile(ASP), Audio(MP3), 4Mbps WMV : 720x480, Audio(WMA), 2.5Mbps
	Music	MP3 : 8~48KHz, 8~320Kbps WMA : 8~48KHz, 8~320Kbps
Built-in Memory	64 MB	
Network	Wi-Fi 802.11b/g 2.4GHz 54Mbps WEP : Open (64bit, 128bit) WPA-PSK : TKIP, AES WPA2-PSK : TKIP, AES	
USB	USB 2.0 (Upstream (host) x 1, downstream (slave) x 1)	
Media (Memory Card)	2 in 1(SD≤4GB / MS≤4GB) ✗ SDHC (High-Capacity) cards are not supported.	
Power	Rating	External Power Adapter (12 V, 2 A, 24 W)
	Battery	7.4V 770mAH
	Consumption	Normal 10W (But, 12 W for battery charging) Off mode(Power Switch Off) under 1W (Even if the power is turned off, up to 10W may be consumed while the battery is being charged.)
Sound	1W + 1W(Stereo), headphone	

Dimensions (WxHxD)	228 x 187.5 x 46 mm
--------------------	---------------------

Weight	785 g
--------	-------

✘ **The product design may differ according to the model, and specifications are subject to change without prior notice for product performance enhancement.**



Class B Equipment (Information Communication equipment for residential use)

This product complies with the Electromagnetic Compatibility Directives for residential Use and can be used in all areas including common residential areas. (Class B equipment radiates less electromagnetic influences than class A equipment.)

| [Specifications](#) | [Supported Files](#) |

Supported Files

- ♦ The Digital Photo Frame uses these modules:
WinCE 5.0
For more information, visit the following web sites:
RMI Alchemy Developer Support Site(<http://209.254.132.52/RMI/EmbeddedDeveloper.nsf>)

Using, copying or reproducing the whole or part of this manual without written permission from Samsung Electronics is prohibited. The content of this manual is subject to change without prior notice. ©2008 All rights reserved. Samsung Electronics.

Digital Photo Frame



Digital Photo Frame ○○○○○○○○○○ SPF-85V SPF-86V

- [Safety Instructions](#)
- [Overview](#)
- [Connecting](#)
- [Using](#)
- [Applications](#)
- [Specifications](#)
- [Troubleshooting](#)

- [↑ TOP](#)
- [↑ MAIN](#)
- [↶](#)

Troubleshooting

- [Troubleshooting](#)
- [Terminology](#)
- [Service Centers](#)
- [Declaration of Conformity](#)

Troubleshooting

This section lists various problems and solutions encountered by users while using the digital photo frame. When encountering a problem, first check the list below and follow the suggested action if one matches your problem. If the problem still persists, contact or visit the nearest [service center](#).

Symptoms	Causes and Actions
The power does not turn on.	<ul style="list-style-type: none"> Check the connections for the adapter cable and the power terminal of the product.
It takes time until an image is displayed after the power is turned on. It takes time to move to the next photo.	<ul style="list-style-type: none"> If the resolution is high or the file size is large, the photo may be displayed slowly on the screen.
I connected an external device but it is not operating.	<ul style="list-style-type: none"> Check the cable connections connecting the product and the external device. The USB device must support Windows CE 5.0. Check whether your USB device supports Windows CE 5.0.
There is still space on the Frame Memory but I cannot copy any more photos.	<ul style="list-style-type: none"> Create a folder in the Frame Memory and copy your photos into the folder.
The screen color is too dim or dark.	<ul style="list-style-type: none"> Adjust the brightness in the Settings.
No slideshow is played automatically.	<ul style="list-style-type: none"> Set [Starting Mode] of [Settings-Preference] to [Slideshow].
When playing a movie, the screen is displayed but there is no sound.	<ul style="list-style-type: none"> The screen is not displayed because the video codec of the file is not supported. Supported codecs are MPEG4 and WMV9.
The movie is played with the sound only. A blank screen is displayed.	<ul style="list-style-type: none"> Change the volume. Check whether the file contains sound information.
Auto On and Auto Off do not operate.	<ul style="list-style-type: none"> If Auto On and Auto Off are set to the same time, they will not operate. Check the time settings.
The [Button Sound] is set to On but there is no button operating sound.	<ul style="list-style-type: none"> The button operating sound will not be heard while a [Background Music, Music, or Movie file] is playing.
My digital photo frame is not accepting a photo from the Internet.	<ul style="list-style-type: none"> Check whether the AP connected to your digital photo frame can connect to the Internet. The maximum permitted file size of a web photo is 4.2 Mb. (The maximum permitted file size is 8.5 Mb.) Only JPEG files are available on the web or Feed (higher than 400X240 pixels).
I've tried to change an image rating in Windows Media Player but it does not	<ul style="list-style-type: none"> After changing the rating, turn Windows Media Player off and on.

change.

I've tried to change the name of my digital photo frame but it will not change.

- ◆ Remove the product from Windows Media Player (Library/Media Sharing) and reboot your digital photo frame and computer.

I cannot connect my digital photo frame to Windows Media Player of my PC.

- ◆ Check whether your PC and digital photo frame are connected to the same Access Point (AP).
- ◆ Vista: Check whether [Control Panel/Network and Sharing Center/Customize/Location Type/Personal] is selected.
- ◆ Vista/XP: Select the digital photo frame in the [Library/Media Sharing] of [Windows Media Player] and check whether it is set to [Allow].

The FrameManager icon is not displayed.

- ◆ Check whether the FrameManager program is installed.
- ◆ Select Start- Programs - Samsung - FrameManager to restart FrameManager.
- ◆ Reboot your computer.

I pressed a button, but it does not operate.

- ◆ Check whether the button lock function is activated.
- ◆ If you hold down the MENU button for more than five (5) seconds, the button lock function is activated. If you press a button it will not operate.
- ◆ To clear the button lock function, hold down MENU button for more than five (5) seconds again.

[| Troubleshooting](#) | [Terminology](#) | [Service Centers](#) | [Declaration of Conformity](#) |

▣ Terminology

Terms	Description
MPEG4 (Motion Picture Expert Group4)	<ul style="list-style-type: none">◆ MPEG4 is a movie compression technology for video communications which enables implementing bi-directional multimedia. It was developed to make it possible to transmit movies over low speed lines on the Internet or for mobile communications. It is used widely on PCs, TVs and cell phones. A movie file formatted in the MPEG4 format is called an MPG or MPEG file.
WMV9 (Window Media Video9)	<ul style="list-style-type: none">◆ A video codec in the MPEG4 format developed by Microsoft
MP3 (MPEG Audio Layer-3)	<ul style="list-style-type: none">◆ MP3 is a high quality audio compression technology. It provides a 50 times higher compression than CD. Because it provides high quality and a low size for its compression ratio, it is commonly used on the Internet and for FM radio transmissions, etc. An audio file formatted in the MP3 format is called an MP3 file.
JPEG (Joint Photographic Coding Expert Group)	<ul style="list-style-type: none">◆ JPEG is an image compression technology. It provides the smallest loss of all image compression technologies. It is used widely to transmit multimedia files on the Internet and for other uses. An image file formatted in the JPEG format is called a JPEG or JPG file. Usually, a JPEG file is created by taking a picture with a digital camera, by drawing on a computer, or by a graphic package and then by compressing the graphics image into the JPEG format.
SD Card (Secure Digital Card)	<ul style="list-style-type: none">◆ An SD card is a Flash memory card the size of a postage stamp. It provides high stability and high capacity. It is widely used in various digital products such as PDAs, digital cameras, MP3 players, cell phones, and notebook PCs. Its appearance is similar to that of MMC, but the number of pins and their thickness is different. It also has a password setting function for data security.
USB Cable 1) A-mini B type	<ul style="list-style-type: none">◆ Use the up stream terminal when connecting to a PC. This product supports USB 2.0. An A-mini B type cable which is used to connect your digital photo frame to a PC is provided with the product. The A type is the USB connector used to connect to a PC. The B type is the USB connector used to connect to an external device. You can connect your digital photo frame to a PC using an A-mini B type USB cable.
USB Cable 2) Cable for Connecting Other Devices	<ul style="list-style-type: none">◆ Use this type of cable when using the down stream terminal. This product supports USB 2.0. When connecting an external device to the down stream terminal, use the USB cable provided with the external device.

<p>AP (Access Point)</p>	<ul style="list-style-type: none"> When using a cell phone, you will hear frequently about a "repeater." In a wireless LAN, AP plays the same role as a repeater. That is, it is an intermediate equipment through which wireless LAN cards receive signals. As a cell phone makes a call through a repeater, a wireless LAN card sends and receives data through an AP.
<p>SSID (Service Set Identifier)</p>	<ul style="list-style-type: none"> SSID is a 32-bit unique identifier which is attached to each header of every packet being transmitted on a wireless LAN. It is used as a password when a wireless device connects to a Basic Service Set (BBS). Because SSID allows differentiating a wireless LAN from other wireless LANs, all APs and wireless devices that want to access to a wireless LAN must use the same SSID. If a device does not know the unique SSID of a certain BBS, it cannot connect to that BBS.

▣ Service Centers

If you need a product service, contact or visit a Samsung [service center](#).
 For services for network connection and the Server.

Services	Contacts
Samsung Electronics web site	http://www.samsung.com



If you have any questions or comments relating to Samsung products, please contact the SAMSUNG customer care center.

North America		
U.S.A	1-800-SAMSUNG (7267864)	http://www.samsung.com/us
CANADA	1-800-SAMSUNG (7267864)	http://www.samsung.com/ca
MEXICO	01-800-SAMSUNG (7267864)	http://www.samsung.com/mx

Latin America		
ARGENTINE	0800-333-3733	http://www.samsung.com/ar
BRAZIL	0800-124-421 4004-0000	http://www.samsung.com
CHILE	800-SAMSUNG(726-7864)	http://www.samsung.com/cl
COLOMBIA	01-8000112112	http://www.samsung.com/co
COSTA RICA	0-800-507-7267	http://www.samsung.com/latin
ECUADOR	1-800-10-7267	http://www.samsung.com/latin
EL SALVADOR	800-6225	http://www.samsung.com/latin
GUATEMALA	1-800-299-0013	http://www.samsung.com/latin
HONDURAS	800-7919267	http://www.samsung.com/latin
JAMAICA	1-800-234-7267	http://www.samsung.com/latin
NICARAGUA	00-1800-5077267	http://www.samsung.com/latin

PANAMA	800-7267	http://www.samsung.com/latin
PUERTO RICO	1-800-682-3180	http://www.samsung.com/latin
REP. DOMINICA	1-800-751-2676	http://www.samsung.com/latin
TRINIDAD & TOBAGO	1-800-SAMSUNG(726-7864)	http://www.samsung.com/latin
VENEZUELA	0-800-100-5303	http://www.samsung.com/latin

Europe		
AUSTRIA	0810 - SAMSUNG (7267864, € 0.07/min)	http://www.samsung.com/at
BELGIUM	02 201 2418	http://www.samsung.com/be (Dutch) http://www.samsung.com/be_fr (French)
CZECH REPUBLIC	800 - SAMSUNG (800-726786) Distributor pro Českou republiku: Samsung Zrt., česká organizační složka, Oasis Florenc, Sokolovská394/17, 180 00, Praha 8	http://www.samsung.com/cz
DENMARK	8 - SAMSUNG (7267864)	http://www.samsung.com/dk
EIRE	0818 717 100	http://www.samsung.com/ie
FINLAND	30 - 6227 515	http://www.samsung.com/fi
FRANCE	01 4863 0000	http://www.samsung.com/fr
GERMANY	01805 - SAMSUNG (7267864, € 0.14/Min)	http://www.samsung.de
HUNGARY	06-80-SAMSUNG(726-7864)	http://www.samsung.com/hu
ITALIA	800-SAMSUNG(726-7864)	http://www.samsung.com/it
LUXEMBURG	02 261 03 710	http://www.samsung.com/lu
NETHERLANDS	0900-SAMSUNG (0900-7267864) (€ 0,10/Min)	http://www.samsung.com/nl
NORWAY	3 - SAMSUNG (7267864)	http://www.samsung.com/no
POLAND	0 801 1SAMSUNG(172678) 022 - 607 - 93 - 33	http://www.samsung.com/pl
PORTUGAL	808 20 - SAMSUNG (7267864)	http://www.samsung.com/pt
SLOVAKIA	0800-SAMSUNG (7267864)	http://www.samsung.com/sk
SPAIN	902 - 1 - SAMSUNG (902 172 678)	http://www.samsung.com/es
SWEDEN	075 - SAMSUNG (726 78 64)	http://www.samsung.com/se
SWITZERLAND	0848 - SAMSUNG(7267864, CHF 0.08/min)	http://www.samsung.com/ch
U.K	0845 SAMSUNG (7267864)	http://www.samsung.com/uk

CIS		
ESTONIA	800-7267	http://www.samsung.com/ee
LATVIA	8000-7267	http://www.samsung.com/lv
LITHUANIA	8-800-77777	http://www.samsung.com/lt
KAZAKHSTAN	8-10-800-500-55-500	http://www.samsung.com/kz_ru
KYRGYZSTAN	00-800-500-55-500	
RUSSIA	8-800-555-55-55	http://www.samsung.ru
TADJIKISTAN	8-10-800-500-55-500	

UKRAINE	8-800-502-0000	http://www.samsung.ua
UZBEKISTAN	8-10-800-500-55-500	http://www.samsung.com/kz_ru

Asia Pacific

AUSTRALIA	1300 362 603	http://www.samsung.com/au
CHINA	800-810-5858	http://www.samsung.com/cn
	400-810-5858	
	010-6475 1880	
	HONG KONG : 3698-4698	http://www.samsung.com/hk
INDIA	3030 8282	http://www.samsung.com/in
	1800 110011	
	1-800-3000-8282	
INDONESIA	0800-112-8888	http://www.samsung.com/id
JAPAN	0120-327-527	http://www.samsung.com/jp
MALAYSIA	1800-88-9999	http://www.samsung.com/my
NEW ZEALAND	0800 SAMSUNG (0800 726 786)	http://www.samsung.com/nz
PHILIPPINES	1-800-10-SAMSUNG(726-7864)	http://www.samsung.com/ph
	1-800-3-SAMSUNG(726-7864)	
	02-5805777	
SINGAPORE	1800-SAMSUNG(726-7864)	http://www.samsung.com/sg
THAILAND	1800-29-3232	http://www.samsung.com/th
	02-689-3232	
TAIWAN	0800-329-999	http://www.samsung.com/tw
VIETNAM	1 800 588 889	http://www.samsung.com/vn

Middle East & Africa

SOUTH AFRICA	0860-SAMSUNG(726-7864)	http://www.samsung.com/za
TURKEY	444 77 11	http://www.samsung.com/tr
U.A.E	800-SAMSUNG (726-7864) 8000-4726	http://www.samsung.com/ae

Using, copying or reproducing the whole or part of this manual without written permission from Samsung Electronics is prohibited. The content of this manual is subject to change without prior notice. ©2008 All rights reserved. Samsung Electronics.

Digital Photo Frame

Free Manuals Download Website

<http://myh66.com>

<http://usermanuals.us>

<http://www.somanuals.com>

<http://www.4manuals.cc>

<http://www.manual-lib.com>

<http://www.404manual.com>

<http://www.luxmanual.com>

<http://aubethermostatmanual.com>

Golf course search by state

<http://golfingnear.com>

Email search by domain

<http://emailbydomain.com>

Auto manuals search

<http://auto.somanuals.com>

TV manuals search

<http://tv.somanuals.com>