

SAMSUNG SGH-T301G User's Guide



- Depending on the software installed or your service provider or country, some of the descriptions in this guide may not match your phone exactly.
- Depending on your country, your phone and accessories may appear different from the illustrations in this guide.

Installing the SIM card and battery

SIM Card Information

When you subscribe to network services, you receive a plug-in SIM (Subscriber Identity Module) card loaded with your subscription details, such as your PIN and available optional services.

Activating your Phone

To activate your new phone, power-off the phone, if necessary. Press and hold the **SEND** key until the power-off image displays.

Before turning your phone on, be sure the SIM card is installed and the battery is charged.

Removing the Battery

1. With your phone turned off, press in on the battery cover release (1) on the back of your phone, slide the battery cover up and lift off (2).
2. Lift the battery up (1) and away (2) from the phone, as shown.

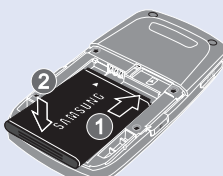
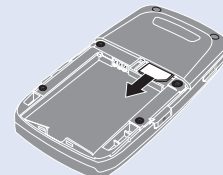
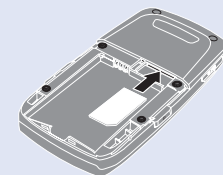
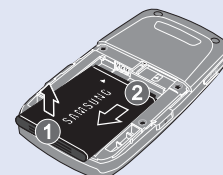
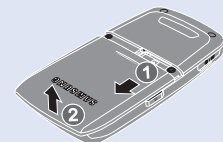
Installing and Removing the SIM Card

Important: The plug-in SIM card and its contacts can be easily damaged by scratches or bending. Use caution when inserting or removing the card, and keep all SIM cards out of reach of children.

1. With your phone turned off, remove the back cover and battery.
2. Make sure the gold contacts of the SIM card are face down, then slide the SIM card completely into the socket, with the corner notch oriented as shown.
3. To remove the SIM, slide it gently out of the socket.

Replacing the Battery

1. To reinstall the battery, align the battery contacts (1) with those in the battery compartment. Press the battery down until it clicks into place (2). Make sure that the battery is properly installed and not obstructing the SIM card before replacing the cover.
2. With the battery in position in the phone, replace the battery cover on the back of your phone so that it fits



flush against your phone and use a gentle thumb pressure to slide the cover up until it clicks into place.

Note: The battery must be properly installed before charging the battery or switching on the phone.



Charging the battery

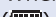
Your phone is powered by a rechargeable Li-ion battery. Use the wall charger to charge the battery, and use only Samsung approved batteries and chargers.

Note: You must fully charge the battery before using your phone for the first time. A fully discharged battery requires up to 4 hours of charge time..

Note: For connection to an electrical supply not located in the U.S., you must use an adaptor of the proper configuration for the power outlet. Using the wrong adaptor can damage your phone and void your warranty..

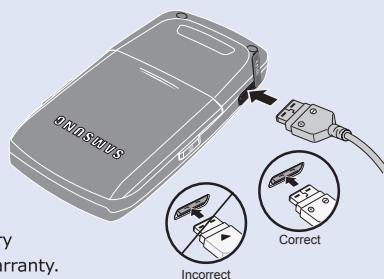
1. Open the cover on the accessory port on the left side of the phone and plug the wall charger connector into the jack.

Note: The illustration shows both the correct method and the incorrect method for connecting the charger. If the incorrect method is attempted, damage to the accessory port can occur voiding the phone's warranty.

2. Plug the charger into a standard AC wall outlet.
3. When the phone is completely charged (), unplug the charger from the wall outlet.

4. Remove the charger from the phone by gently pulling out the connector. Replace the plastic cover over the open jack.

Important: The battery charging function may stop when you are on a call. To avoid damage to the battery, do not remove the battery from the phone while charging. Make sure the wall charger is disconnected from the phone before removing the battery.



Phone layout and key functions

Earpiece/Speaker
Used to listen to audio and music from your phone.

Volume key
Used to adjust the volume up and down. Press one of these keys to end an audible alarm.

Left soft key
Performs the function indicated by the screen text at the bottom of the display.

Send key
Sends and answers a call. In Idle mode, retrieves the most recent calls.

Cancel/clear key
Deletes characters from the display. Returns the display to the previous menu level. In Idle mode, access your Calendar with the C key.

Voice Mail key
In Idle mode, hold down to access your voicemail server.

Alphanumeric keys
Use these keys to enter alpha characters, numbers and symbols.

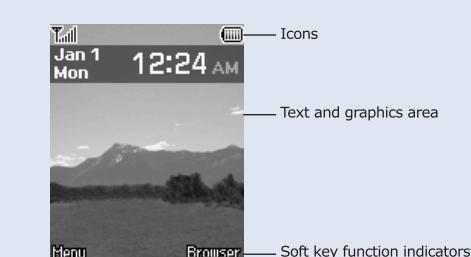
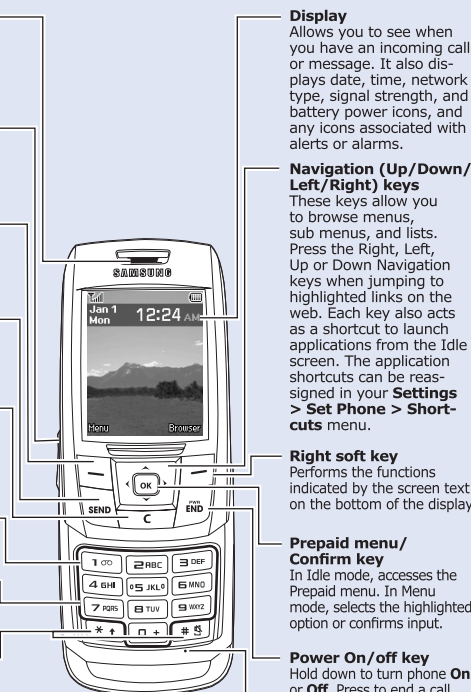
Special function keys

Asterisk/Shift key
Enters the [*] character for calling features. In text mode, press to change the character input type. Press and hold to enter a **Pause** when necessary for dialing phone numbers for automated systems.




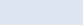



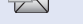
Pound/Space key
Enters the pound [#] character for calling features. In text entry mode, press to enter a space between characters. In Idle mode, press and hold to turn On or Off your Silent profile.

Display

The display has 3 areas:



Your phone displays the following status indicators on the top of the screen:

Icon	Description
	Signal strength
	Call in progress
	Out of your service area; you cannot make or receive calls except for emergency calls
	Alarm set
	Silent mode
	New text message
	New voicemail message
	Battery power level

Switching on or off the phone

1. Press and hold **SEND** for more than one second to switch on the phone.
2. To switch off the phone, press and hold **SEND** for more than two seconds.

Changing the display language

Note: The display language is preset to Automatic at the factory. To change the language, use the Language menu.

1. In Idle mode, press the Menu key.
2. Select **Settings** → **Set Phone** → **Language**.
3. Select a language and save your setting.

Making a call

1. In Idle mode, enter an area code and phone number, and press **SEND**.
2. When you want to end the call, press and hold **SEND**.

Answering a call

1. When the phone rings, press the **Accept** soft key or **SEND** to answer a call.
– or –
Press **SEND** to reject the call.
2. Press **SEND** to end the call.

Switching from Normal Mode to Silent Mode

1. Press and hold **SEND** in Idle mode to switch to Silent mode and disable all sounds on the phone.
2. To switch back to Normal mode, press and hold **SEND** again.

Adjusting the volume

1. In Idle mode, press the **Menu** key.
2. Select **Settings** → **Sound Profiles**.
3. Highlight the **Normal** option and press the **Edit** soft key.
4. Press **Right** or **Left** navigation keys to select the **Phone** tab.
5. Press **Up** or **Down** to select the **Volume** options.
6. Press the **Change** soft key.
7. Adjust the Volume up or down using the **Right** or **Left** navigation keys.
8. Press the **OK** soft key, and then press the **Save** soft key.

Changing a ringtone for calls

1. In Idle mode, press the **Menu** key.
2. Select **Settings** → **Sound Profiles**.
3. Highlight the **Normal** option and press the **Edit** soft key.
4. Press **Right** or **Left** navigation keys to select the **Call** tab.
5. Press **Up** or **Down** to select the **Voice Call Ringtone** options.
6. Press the **Change** soft key.
7. Navigate to highlight your ringtone using the **Up** or **Down** navigation keys. Press the **Select** soft key, and then press the **Save** soft key.

Redialing recent numbers

1. In Idle mode, press **SEND**.
2. Press **Up** or **Down** to scroll to the number you wish to call.
3. Press **SEND** to dial the number.

Using the menus

Selecting or Modifying a Menu or Feature

1. In Idle mode, press the **Menu** key.
2. Press the Navigation keys to reach a desired menu and then press the **Select** soft key or **OK**.
3. If the menu contains any submenus, locate the one you want by pressing the Navigation keys. Press the **Select** soft key or **OK** to enter the submenu.
If the selected menu contains additional submenus, repeat this step.
4. Press the Navigation keys to find the setting of your choice.
5. Press the **Select** soft key or **OK** to confirm your chosen setting.

Using Shortcuts

You can quickly access the menu you want by using shortcut numbers. The shortcut number displays in front of the menu name in Menu mode.

Menu map

1. Prepaid	3.8 Call Costs (SIM dependent)	7. My Folder
1.1 Add Airtime		7.1 Audio
1.2 Buy Airtime		7.2 Graphics
1.3 My Phone Number		7.3 Used Space
1.4 Airtime Info	4. Messages	
1.5 Airtime Display	4.1 Create New Message	8. Tools
1.6 Serial Number	4.2 Inbox	8.1 Alarms
1.7 SIM Number	4.3 Sent	8.2 Calendar
1.8 Code Entry Mode	4.4 Outbox	8.3 Notes
	4.5 Drafts	8.4 Calculator
	4.6 My Folder	8.5 Tip Calculator
2. Contacts	4.7 Templates	8.6 Converter
2.1 Contact List	4.8 Delete All	8.7 Timer
2.2 Add New Contact	4.9 Messaging Settings	8.8 Stopwatch
2.3 Group	4.10 Used Space	8.9 World Time
2.4 Speed Dial List	5. Browser	
2.5 Reject List	5.1 Home	9. Settings
2.6 Contacts Settings	5.2 Favorites	9.1 Sound Profiles
	5.3 Enter URL	9.2 Set Display
3. Recent Calls	5.4 Clear Cache	9.3 Set Time & Date
3.1 All Calls	6. Games & Apps	9.4 Set Phone
3.2 Missed Calls	6.1 Games	9.5 Set Calls
3.3 Calls Made	6.2 Camera	9.6 Bluetooth
3.4 Calls Received		9.7 Set Applications
3.5 Delete All		9.8 Reset Settings
3.6 Call Time		9.9 Used Space
3.7 Data Volume		

Entering text

Changing the text input mode

In a text input field, press **[*#]** to change the input mode. To switch between T9 mode and ABC mode, press and hold **[*#]**. To access Symbols, press and hold **[*#]**. To return to T9 and ABC modes, press and hold **[*#]** again.

T9 mode

- Press 2 to 9 to start entering a word. Press each key once for one letter.

The word you are entering appears on the display. It may change with each keypress. Finish entering the word before editing or deleting any keystrokes. Example: To enter "Hello" in T9 mode, press 4, 3, 5, 5, and 6.

- Press **[*#]** key to insert a space and enter the next word.

ABC mode

- Press the keys labeled with the letter you want once for the first letter, twice for the second letter, and so on. For example, press 2 three times to enter "C" and 5 two times to enter "K".

Number mode

Press the keys corresponding to the digits you want.

Symbol mode

Press the keys corresponding to the symbol you want and press the **OK** soft key. You can press Up or Down to display more symbols.

Tips for entering text

- To move the cursor, press the Navigation keys.
- To delete characters one by one, press **C**. To delete all of the characters, press and hold **C**.
- To insert a space between characters, press **[*#]**.
- To change case in T9 mode or ABC mode, press **[*#]**.
- To enter punctuation marks in T9 mode or ABC mode, press **1** or **0**.

Sending an SMS message

- In Idle mode, press the **Menu** key.
- Select **Messages** → **Create New Message** → **Text Message/Multimedia Message**.
- Enter the message text.
- Press the **Options** soft key to insert text templates, addresses from your address book or URLs from your list of favorites.
- Press the **Send To** soft key.
- Select an empty location. Enter a destination.
- Press the **Send** soft key to send the message.

Quick feature reference

This section provides brief explanations of features on your phone.

Menu	Description
<i>Menu > Recent Calls > All Calls, Missed calls, Calls Made, Calls Received</i>	View the most recent calls you have dialed, received, or missed.
<i>Menu > Recent Calls > Delete all</i>	Delete the call logs in each call type, or all logs at once.
<i>Menu > Recent Calls > Call time</i>	View the duration of recent calls you have dialed and received. Also reset the time counter.
<i>Menu > Recent Calls > Data Volume</i>	View your Recent Volume and Total Volume for Sent, Received and Total usage.
<i>Menu > Tools > Alarms</i>	Set an alarm to sound at a specific time.
<i>Menu > Tools > Calendar</i>	Displays the Calendar on your phone. Lets you set appointments and view events.
<i>Menu > Tools > Calculator</i>	Perform basic arithmetic functions.
<i>Menu > Tools > Tip Calculator</i>	Calculate a tip using different percentages.
<i>Menu > Tools > Converter</i>	Do conversions such as length and temperature.
<i>Menu > Tools > Timer</i>	Start a timer.
<i>Menu > Tools > Stopwatch</i>	You can use this feature to measure intervals of time for 4 separate times.
<i>Menu > Tools > World Time</i>	World Time allows you to view the time of day or night in another parts of the world. World displays time in the 2 different time zones around the world.
<i>Menu > Games & Apps > Games</i>	Access your games.

Menu	Description
<i>Menu > Games & Apps > Camera</i>	Use your camera to take pictures to store and send with your messages.
<i>Menu > Contacts > Contact List</i>	Search for contacts in Phonebook.
<i>Menu > Contacts > Add New Contact</i>	Add a new contact to Phonebook.
<i>Menu > Contacts > Speed Dial List</i>	Assign speed dial numbers (2 to 9) for eight of your most frequently dialed numbers.
<i>Menu > Contacts > Contacts Settings > Copy All to</i>	Copy all contacts from your phone to your SIM or from your SIM to your phone.
<i>Menu > Messages > Create New Message</i>	Create and send messages to other mobile phones.
<i>Menu > Messages > Inbox or Sent or Outbox</i>	Read received messages, sent messages or resend failed messages.
<i>Menu > Messages > Templates</i>	Preset templates of frequently used messages.
<i>Menu > Messages > Delete all</i>	Delete messages in each message folder, or all messages at once.
<i>Menu > Messages > Messaging Settings</i>	Set options for using messaging services.
<i>Menu > Settings > Sound Profiles > Normal > Call</i>	Select a ringtone for incoming calls, a volume level, or an alert type.
<i>Menu > Settings > Sound Profiles > Normal > Message</i>	Select the alert ringtone and alert type for incoming messages or set how often you are informed of a new message.
<i>Menu > Settings > Sound Profiles > Normal > Phone > Power on/off Tone</i>	Set the phone to sound when it is switched on or off.

Menu	Description
<i>Menu > Settings > Sound Profiles > Normal > Phone > Keypad Tone</i>	Set the phone to beep when you press a key.
<i>Menu > Settings > Sound Profiles > Silent</i>	Set how the phone acts to alert you to a specific event while in Silent mode.
<i>Menu > Settings > Set Display</i>	Change settings for the display and backlight.
<i>Menu > Settings > Set Display > Main Display</i>	Change your Wallpaper, Theme, Menu Style, Idle Screen Display and Dialing Display.
<i>Menu > Settings > Set Time and Date</i>	Change the Time format and the Date format.
<i>Menu > Settings > Set Phone > Language</i>	Select a language to be used for the display text.
<i>Menu > Settings > Set Phone > Security</i>	Protect the phone against unauthorized use.
<i>Menu > Settings > Set Calls > General > Call Status Tones > Call Connect Tone</i>	Set the phone to beep when a call is connected to the system.
<i>Menu > Settings > Set Calls > General > Call Status Tones > Minute Minder</i>	Set the phone to beep every minute during a call to keep you informed of the length of your call.
<i>Menu > Settings > Set Calls > General > Alerts on Call</i>	Set the phone to alert you when you receive a new message or when the time for an alarm comes during a call.
<i>Menu > Settings > Set Calls > Voice Call > Auto redial</i>	Set the phone to make up to ten attempts to redial a phone number after an unsuccessful call.
<i>Menu > Settings > Set Calls > General > Call Answer</i>	Set the phone to answer a call when the slider opens or when any key is pressed, except the End key.
<i>Menu > Settings > Reset Settings</i>	Reset the phone to the factory default settings.

Important safety precautions

Read these guidelines before using your wireless phone. Failure to comply with them may be dangerous or illegal.

Drive safely at all times

Do not use a hand-held phone while driving; park the vehicle first.

Switching off when refueling

Do not use the phone at a refueling point (service station) or near fuels or chemicals.

Switching off in an aircraft

Wireless phones can cause interference. Using them in an aircraft is both illegal and dangerous.

Switching off near all medical equipment

Hospitals and health care facilities may be using equipment that could be sensitive to external RF energy. Follow any regulations or rules in force.

Interference

All wireless phones may be subject to interference, which could affect their performance.

Special regulations

Follow any special regulations in force in any area and always switch off your phone whenever it is forbidden to use it.

Water resistance

Your phone is not water-resistant. Keep it dry.

Sensible use

Use only in the normal position (held to the ear). Avoid unnecessary contact with the antenna when the phone is switched on.

Emergency calls


Key in the emergency number for your present location, then press **[*#]**. Do not end the call until given permission to do so.

Small children and your phone

Keep the phone and all its parts including accessories out of reach of small children.

Accessories and batteries

Use only Samsung-approved batteries and accessories, such as headsets. Use of any unauthorized accessories could damage your phone and may be dangerous.

CAUTION	Risk of explosion if a battery is replaced by an incorrect type. Dispose of used batteries according to the instructions.
	At very high volume, prolonged listening to a headset can damage your hearing.

Qualified service

Only qualified service personnel may repair your phone.

SAR information

Your wireless phone is a radio transmitter and receiver. It is designed and manufactured not to exceed the emission limits for exposure to radio frequency (RF) energy set by the Federal Communications Commission (FCC) of the U.S. Government. These limits are part of comprehensive guidelines and establish permitted levels of RF energy for the general population. The guidelines are based on the safety standards that were developed by independent scientific organizations through periodic evaluation of scientific studies.

The standards include a substantial safety margin designed to assure the safety of all persons, regardless of age and health.

The exposure standard for wireless phones employs a unit of measurement known as Specific Absorption Rate (SAR). The SAR limit set by the FCC is 1.6 W/kg¹. The highest SAR values for this model phone were Head: 0.994 W/kg, Body-worn: 0.897 W/kg.

¹ In the U.S. and Canada, the SAR limit for mobile phones used by the public is 1.6 watts/kg (W/kg) averaged over one gram of tissue. The standard incorporates a substantial margin of safety to give additional protection for the public and to account for any variations in measurements.

SGH-T301G

SAMSUNG

*Many of the features and services described are network dependent and may require additional subscription and/or usage charges. Not all features are available for purchase or use in all areas. Other conditions and restrictions may apply. See carrier for more information.

© 2009 Samsung Telecommunications America, LLC. Samsung is a registered trademark of Samsung Electronics America.

Free Manuals Download Website

<http://myh66.com>

<http://usermanuals.us>

<http://www.somanuals.com>

<http://www.4manuals.cc>

<http://www.manual-lib.com>

<http://www.404manual.com>

<http://www.luxmanual.com>

<http://aubethermostatmanual.com>

Golf course search by state

<http://golfingnear.com>

Email search by domain

<http://emailbydomain.com>

Auto manuals search

<http://auto.somanuals.com>

TV manuals search

<http://tv.somanuals.com>