



#### Install drivers

- ▶▶ Windows Me
- ▶▶ Windows 98
- ▶▶ Natural Color
- ▶▶ Windows 2000
- ▶▶ Windows XP
- ▶▶ MagicTune™

#### Install programs



● Notational

Please read the following safety instructions as they are designed to prevent damage to property and harm to the user.

**Warning / Caution**



Failure to follow directions noted by this symbol could result in bodily harm or damage to equipment.

**Notational Conventions**



Prohibited



Important to read and understand at all times



Do not disassemble



Disconnect the plug from the outlet



Do not touch



Grounding to prevent an electric shock

● Power



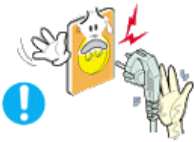
When not used for extended periods of time, set your computer to a screen saver.

- If the same image is present for long periods of time, Phosphor Burnt can be

occured, or the screen may be blurred.



- **Do not use a damaged or loose plug.**
  - This may cause an electric shock or fire.



- **Do not pull the plug out by the wire nor touch the plug with wet hands.**
  - This may cause an electric shock or fire.



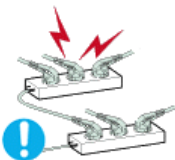
- **Use only a properly grounded plug and receptacle.**
  - An improper ground may cause electric shock or equipment damage.



- **Insert the power plug firmly so that it does not come loose.**
  - A bad connection may cause fire.



- **Do not excessively bend the plug and wire nor place heavy objects upon them, which could cause damage.**
  - This may cause an electric shock or fire.



- **Do not connect too many extension cords or plugs to an outlet.**
  - This may cause fire.

Notational

Power

**Installation**

Clean

Others

## Installation



Be sure to contact an authorized [Service Center](#) when installing your set in a location with heavy dust, high or low temperatures, high humidity, and chemical substances, or where it will be operated for 24 hours continuously such as an airport, train station or etc.

Failure to do so may cause serious damage to your set.



- **Put your monitor in a location with low humidity and a minimum of dust.**
  - Failure to do so may cause an electric shock or fire inside the monitor.



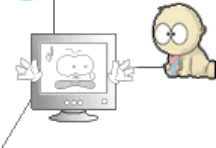
- **Do not drop the monitor when moving it.**
  - This may cause damage to the product or human body.



- **Install the monitor base in a showcase or shelf so that the end of the base does not protrude from the showcase or shelf.**
  - Dropping the product may cause damage to the product or personal injury.



- **Do not place the product on an unstable or small surface area.**
  - Place the product on an even, stable surface, as the product may fall and cause harm to someone walking by, specifically children.



- **Do not place the product on the floor.**
  - Someone, specifically children could trip over it.



- **Keep any flammable objects such as candles, insecticides or cigarettes away from the product.**
  - Otherwise, this may cause a fire.



- **Keep any heating devices away from the power cable.**
  - A melted coating may lead to electric shock or fire.



- **Do not install the product in places with poor ventilation, for instance, a bookshelf, closet, etc.**
  - Any increase in internal temperature may cause fire.



- **Set down the monitor carefully.**
  - The monitor could be damaged or broken.

● **Do not place the monitor face down.**



- The CDT surface may be damaged.

● **Do not use the monitor without the monitor stand.**



- It could break down or cause fire due to bad ventilation.
- If the monitor must be used without the supplied stand, take steps to insure proper ventilation.

● **When installing the product, make sure to keep it away from the wall (more than 10cm/4inch) for ventilation purposes.**



- Poor ventilation may cause an increase in the internal temperature of the product, resulting in a shortened component life and degraded performance.

Notational

Power

Installation

Clean

Others

● **Clean**

When cleaning the monitor case or the surface of the CDT, wipe with a slightly moistened, soft fabric.

**Do not clean Flat monitor with water. Use a water-diluted mild detergent.**



(Some detergents contain significant amounts of alcohol-based solvents, which can damage (color change) or crack the monitor case. The antiglare/anti-static surface coating on the CDT may also be affected.)

Dilute the detergent (1:10 ratio) with water before using.

● **Do not spray water or detergent directly on the monitor.**



● **Use the recommended detergent with a smooth cloth.**



- You may prevent the coated CDT from being damaged or the monitor cabinet from being dissolved, cracked or discolored.
- You may buy a recommended detergent at any Service Center.



**Caution:** Use a recommended detergent only, as other surfactants containing large amounts of alcohol, solvent or other strong substances, can discolor or crack the monitor or damage the coated CDT.

● **If the connector between the plug and the pin is dusty or dirty, clean it properly with a dry cloth.**

- A dirty connector may cause an electric shock or fire.



- **Make sure to unplug the power cord before cleaning the product.**



- Otherwise, this may cause electric shock or fire.



- **Unplug the power cord from the power outlet and wipe the product using a soft, dry cloth.**

- Do not use any chemicals such as wax, benzene, alcohol, thinners, insecticide, air freshener, lubricant or detergent.



- **Contact the [Service Center](#) or [Customer Center](#) for interior cleaning once a year.**

- Keep the product's interior clean. Dust which has accumulated in the interior over an extended period of time may cause malfunction or fire.

[Notational](#)

[Power](#)

[Installation](#)

[Clean](#)

[Others](#)

## • Others



- **Do not remove cover(or back).**

- This may cause an electric shock or fire.
- Refer servicing to qualified service personnel.



- **If your monitor does not operate normally - in particular, if there are any unusual sounds or smells coming from it - unplug it immediately and contact an [authorized dealer](#) or [service](#).**

- This may cause an electric shock or fire.



- **Keep the product away from places exposed to oil, smoke or moisture; do not install inside a vehicle.**

- This may cause malfunction, an electric shock or fire.
- Especially avoid operating the monitor near water or outdoors where the monitor could be exposed to snow or rain.

- **If the monitor is dropped or the casing is damaged, turn the monitor off and unplug the power cord. Then contact the [Service Center](#).**

- The monitor may malfunction, causing an electric shock or fire.



- **Disconnect the plug from the outlet during storms or lightening or if it is not used for a long period of time.**



- Failure to do so may cause an electric shock or fire.



- **Do not try to move the monitor by pulling only the wire or the signal cable.**

- This may cause a breakdown, electric shock or fire due to damage to the cable.



- **Do not move the monitor right or left by pulling only the wire or the signal cable.**

- This may cause a breakdown, electric shock or fire due to damage to the cable.



- **Do not cover the vents on the monitor cabinet.**

- Bad ventilation may cause a breakdown or fire.



- **Do not place water containers, chemical products or small metal objects on the monitor.**

- This may cause malfunction, an electric shock or fire.
- If a foreign substance enters the monitor, unplug the power cord and contact the [Service Center](#) .



- **Do not place any heavy objects on the monitor.**

- This may cause an electric shock or fire.



- **Keep the product away from combustible chemical sprays or inflammable substances.**

- This may cause an explosion or fire.



- **Never insert anything metallic into the monitor openings.**

- This may cause an electric shock, fire or injury.



- **Keep the monitor away from any magnetic substances.**
  - This may cause discoloring or distortion of the image.



- **Watching the monitor continuously at a too close angle may result in eyesight damage.**



- **To ease eye strain, take at least a five-minute break after every hour of using the monitor.**



- **Do not install the product on an unstable, uneven surface or a location prone to vibrations.**
  - Dropping the product may cause damage to the product or personal injury. Using the product in a location prone to vibrations may shorten the lifetime of the product or may catch fire.



- **When moving the monitor, turn off and unplug the power cord. Make sure that all cables, including the antenna cable and cables connected to other devices, are disconnected before moving the monitor.**
  - Failure to disconnect a cable may damage it and lead to fire or an electric shock.



- **Place the product out of children's reach, as they could damage it by hanging onto it.**
  - A falling product could cause physical damage even death.



- **When not using the product for an extended time period, keep the product unplugged**
  - Otherwise, this may cause heat emission from the accumulated dirt or degraded insulation, leading to electric shock or fire.



- **Do not place children's favorite objects (or anything else that may be tempting) on the product.**
  - Children may try to climb on the product to retrieve an object. The product could fall, causing physical damage or even death.





[Unpacking](#) | [Front](#) | [Rear](#) | [Bottom](#) |

Please make sure the following items are included with your monitor.  
If any items are missing, [contact your dealer](#).

**Unpacking**

**Monitor and Stand**



(Some models include a stand attached.)

**Manual**



**Warranty Card**

**User's Guide,**

• Cable



Power Cord

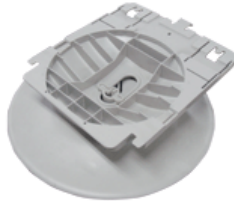


D-sub Cable



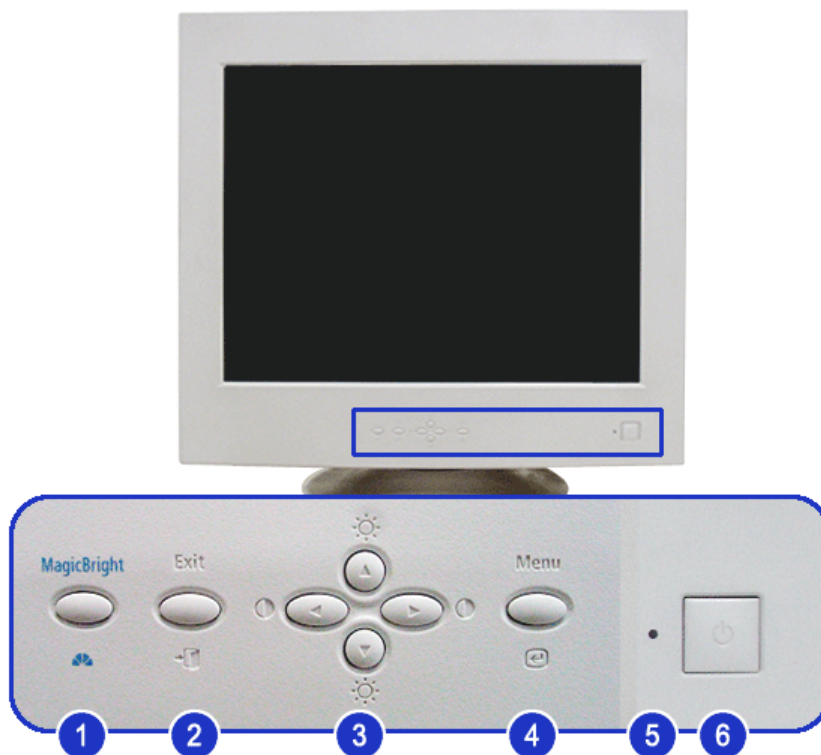
BNC Cable  
(Sold separately)

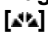
• Stand



Stand

• Front



1. **MagicBright™ button**  MagicBright™ is a new feature providing optimum viewing environment depending on the contents of the image you are watching.

2. **Exit button** [**Esc**] Use this button for Exit the active menu or the OSD.
3. **Adjust buttons** [**▲/▼/◀/▶**] / [**0**] / [**1**] These buttons allow you to highlight and adjust items in the menu. Adjust Brightness and Contrast.
4. **Menu button** [**Ⓜ**] Use this button for open the OSD and activate a highlighted menu item.
5. **Power indicator** This light glows green during normal operation, and blinks green once as the monitor saves your adjustments.
6. **Power button** [**⏻**] Use this button for turn the monitor on and off.



See [PowerSaver](#) described in the manual for further information regarding power saving functions. For energy conservation, turn your monitor OFF when it is not needed, or when leaving it unattended for long periods.

Unpacking

Front

Rear

Bottom

## Rear

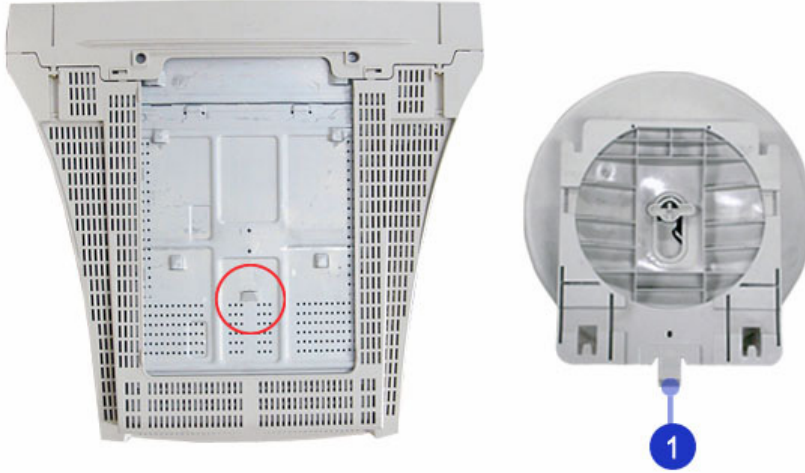


(The configuration at the back of the monitor may vary from product to product.)

1. **Power port** Connect the power cord for your monitor to the power port on the back of the monitor.
2. **Signal port** Connect the signal cable to the 15-pin, D-sub connector on the back of your computer.
3. **BNC Connectors** Connect the signal cable to the BNC signal port on the back of your monitor.



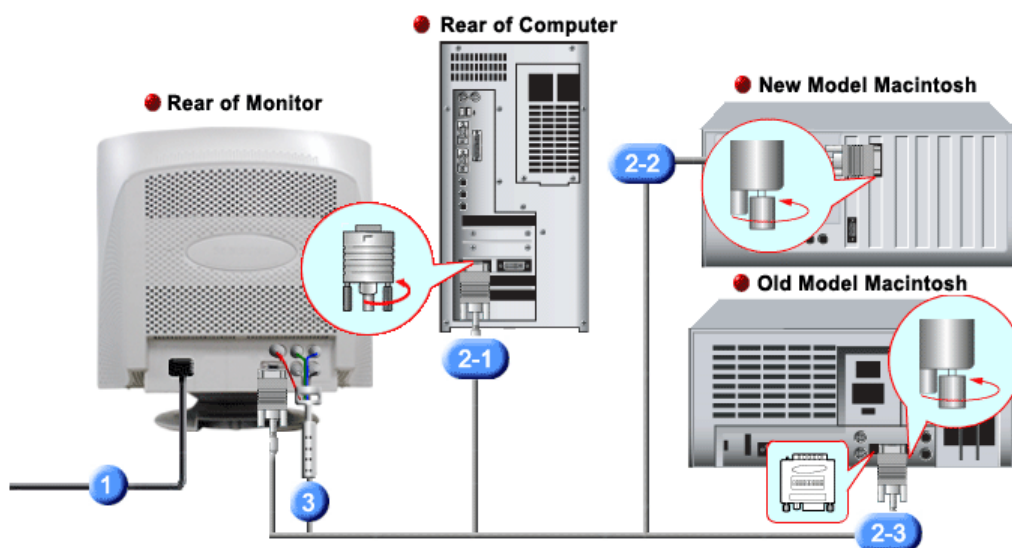
See [Connecting the Monitor](#) for further information regarding cable connections.


**Bottom**

- 1. Tilt/Swivel Base** You can separate the base from the monitor.



● **Connecting the Monitor**



1. Connect the power cord for your monitor to the power port on the back of the monitor. Plug the power cord for the monitor into a nearby outlet.
- 2-1. Connecting to a computer  
Connect the signal cable to the 15-pin, D-sub connector on the back of your computer.  

- 2-2. Connecting to a new Macintosh  
Connect the monitor to the Macintosh computer using the D-SUB connection cable.
- 2-3. Connecting to an old Macintosh  
Connect your monitor to the Macintosh using the adapter for Macintosh (sold separately).
3. When you use a BNC connector.  
Connect the BNC cable(sold separately) to the BNC signal port on the back of your monitor/computer.
4. Turn on your computer and monitor. If your monitor displays an image, installation is complete.

## ● Base Installation

[Tilt/Swivel Base](#) | [Attaching and Removing the Base](#)

### ● Tilt/Swivel Base

With the built-in pedestal, you can tilt and/or swivel the monitor for the most comfortable viewing angle.



### ● Attaching and Removing the Base



#### Attaching the Base

1. Place the monitor upside-down on a flat work surface.
2. Align the tabs on the base with the corresponding slots on the bottom of the monitor.
3. Press the base onto the monitor until the tabs are fully engaged in the slots.
4. Push the base toward the front of the monitor until the release latch clicks into the locked position.  
\* Do not bend the snap.

#### Removing the Base

5. Squeeze and pull up on the release latch on the base.
6. Push the base toward the back of the monitor and lift up to remove the base.



The base will align with the monitor slots in only one position.

---

[Connecting the Monitor](#) | [Base Installation](#) | [Installing the Monitor Driver \(Automatic\)](#) | [Installing the Monitor Driver \(Manual\)](#) | [Natural Color](#)

## ● Installing the Monitor Driver (Automatic)



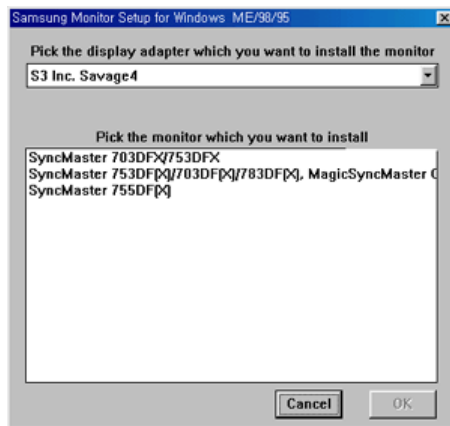
When prompted by the operating system for the monitor driver, insert the CD-ROM included with this monitor. Driver installation is slightly different from one operating system to another. Follow the directions appropriate for the operating system you have.

Prepare a blank disk and download the driver program file at the Internet web site shown here.

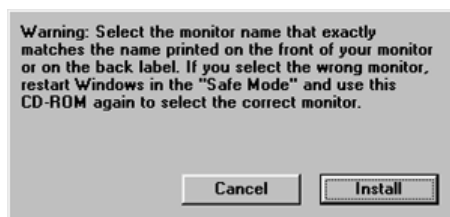
- Internet web site : <http://www.samsung.com/> (Worldwide)  
<http://www.samsung.com/monitor> (U.S.A)  
<http://www.sec.co.kr/monitor> (Korea)  
<http://www.samsungmonitor.com.cn/> (China)

## ● Windows ME

1. Insert CD into the CD-ROM drive.
2. Click "**Windows ME Driver**".
3. Choose your monitor model in the model list, then click the "**OK**" button.



4. Click the "**Install**" button in the "**Warning**" window.



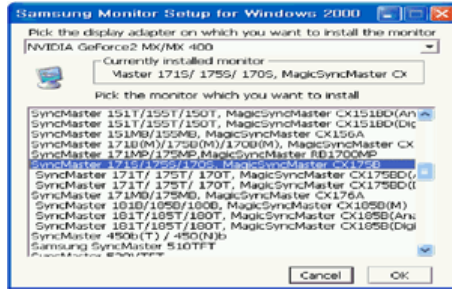
5. Monitor driver installation is completed.

## ● Windows XP/2000

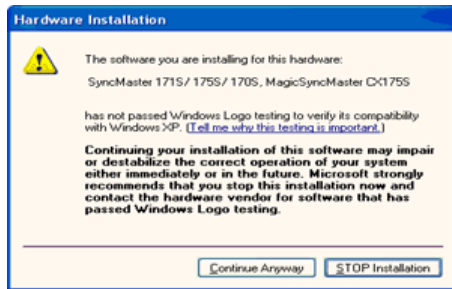
1. Insert CD into the CD-ROM drive.



2. Click **"Windows XP/2000 Driver"**
3. Choose your monitor model in the model list, then click the **"OK"** button.



4. If you can see following message window, then click the **"Continue Anyway"** button. Then click **"OK"** button.



This monitor driver is under certified MS logo and this installation doesn't damage your system. The certified driver will be posted on Samsung Monitor homepage.  
<http://www.samsung.com/>.

5. Monitor driver installation is completed.

## Installing the Monitor Driver (Manual)

[Windows XP](#) | [Windows 2000](#) | [Windows Me](#) | [Windows NT](#) | [Linux](#)



**When prompted by the operating system for the monitor driver, insert the CD-ROM included with this monitor. Driver installation is slightly different from one operating system to another. Follow the directions appropriate for the operating system you have.**

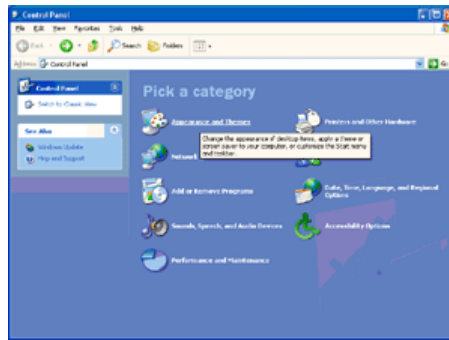
Prepare a blank disk and download the driver program file at the Internet web site shown here.

- Internet web site : <http://www.samsung.com/> (Worldwide)  
<http://www.samsung.com/monitor> (U.S.A)  
<http://www.sec.co.kr/monitor> (Korea)  
<http://www.samsungmonitor.com.cn/> (China)

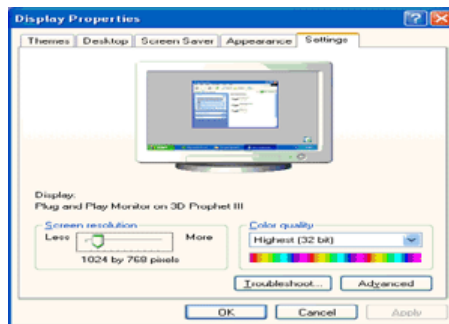
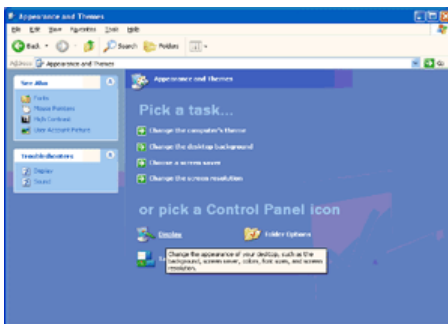
## Microsoft® Windows® XP Operating System

1. Insert CD into the CD-ROM driver.
2. Click **"Start"** → **"Control Panel"** then click the **"Appearance and Themes"** icon.

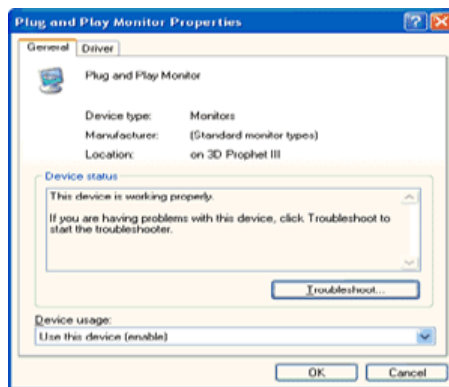
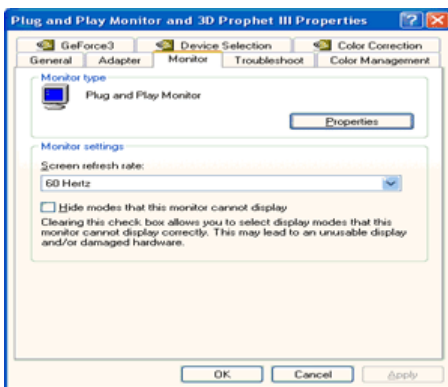




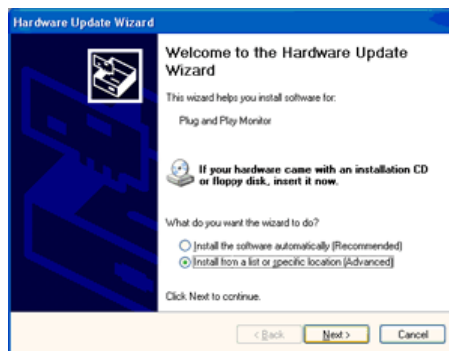
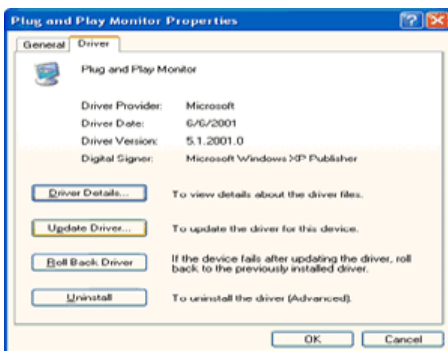
3. Click "**Display**" icon and choose the "**Settings**" tab then click "**Advanced..**".



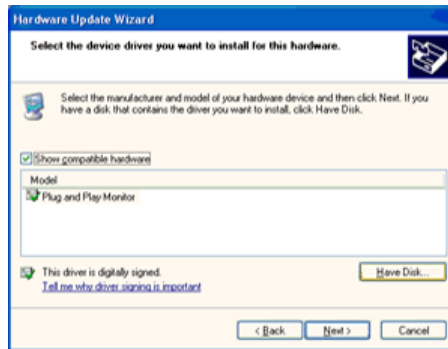
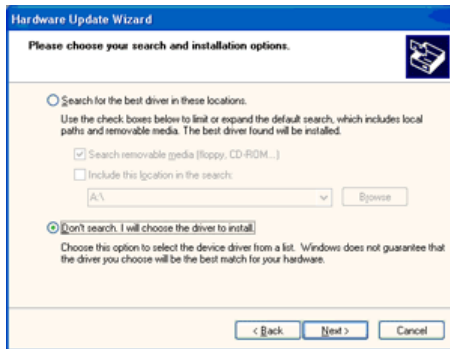
4. Click the "**Properties**" button on the "**Monitor**" tab and select "**Driver**" tab.



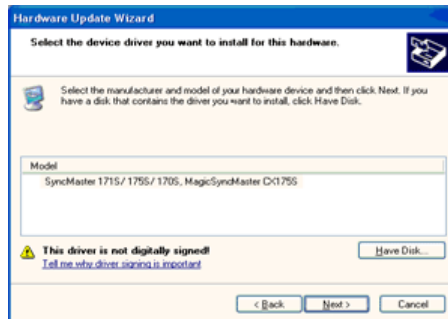
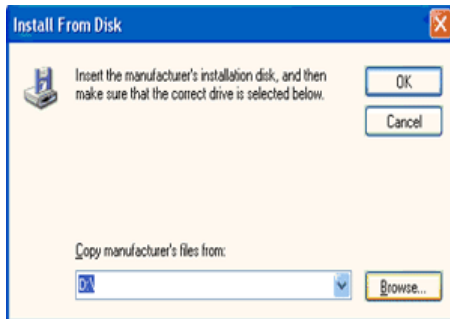
5. Click "**Update Driver..**" and select "**Install from a list or..**" then click "**Next**" button.



6. Select "**Don't search ,I will..**" then click "**Next**" and then click "**Have disk**".



7. Click the **"Browse"** button then choose A:(D:Driver) and choose your monitor model in the model list and click the **"Next"** button.

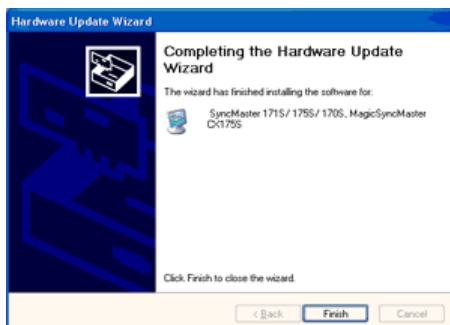


8. If you can see following message window, then click the **"Continue Anyway"** button. Then click **"OK"** button.



This monitor driver is under certified MS logo and this installation doesn't damage your system. The certified driver will be posted on Samsung Monitor homepage.  
<http://www.samsung.com/>.

9. Click the **"Close"** button, then click **"OK"** button continually.





10. Monitor driver installation is completed.

## Microsoft® Windows® 2000 Operating System

When you can see "Digital Signature Not Found" on your monitor, follow these steps.

1. Choose "OK" button on the "Insert disk" window.
2. Click the "Browse" button on the "File Needed" window.
3. Choose A:(D:\Driver) then click the "Open" button and then click "OK" button.

How to install

1. Click "Start", "Setting", "Control Panel".
2. Double click the "Display" Icon.
3. Choose the "Settings" tab and then click "Advanced..".
4. Choose "Monitor".
  - Case1: If the "Properties" button is inactive, it means your monitor is properly configured. Please stop installation
  - Case2: If the "Properties" button is active, click the "Properties" button then follow next steps continually.
5. Click "Driver" and then click on "Update Driver.." then click on the "Next" button.
6. Choose "Display a list of the known drivers for this device so that I can choose a specific driver" then click "Next" and then click "Have disk".
7. Click the "Browse" button then choose A:(D:\Driver).
8. Click the "Open" button, then click "OK" button.
9. Choose your monitor model and click the "Next" button then click "Next" button.
10. Click the "Finish" button then the "Close" button.

If you can see the "Digital Signature Not Found" window then click the "Yes" button. And click the "Finish" button then the "Close" button.

## Microsoft® Windows® Millennium Operating System

1. Click "Start", "Setting", "Control Panel".
2. Double click "Display" icon.
3. Select the "Settings" tab and click "Advanced Properties" button.
4. Select the "Monitor" tab.
5. Click the "Change" button in the "Monitor Type" area.
6. Choose "Specify the location of the driver".
7. Choose "Display a list of all the driver in a specific location.." then click "Next" button.
8. Click the "Have Disk" button
9. Specify A:(D:\driver) then click "OK" button.
10. Select "Show all devices" and choose the monitor that corresponds to the one you connected to your computer and click "OK".
11. Continue choosing "Close" button and "OK" button until you close the Display Properties dialogue box.

## Microsoft® Windows® NT Operating System

1. Click **Start, Settings, Control Panel**, and then double-click **Display** icon.
2. In Display Registration Information window, click Settings Tab and then click **All Display Modes**.
3. Select a mode that you wish to use (Resolution, Number of colors and Vertical frequency) and then click **OK**.
4. Click **Apply** button if you see the screen working normally after clicking **Test**. If the screen is not normal, change to a different mode (lower mode of resolution, colors or frequency).

If there is no Mode at **All Display Modes**, select the level of resolution and vertical



frequency by referring to the [preset Timing Modes](#) in the user guide.

## Linux Operating System

To execute X-Window, you need to make the X86Config file, which is a type of system setting file.

1. Press Enter at the first and the second screen after executing the X86Config file.
2. The third screen is for **setting your mouse**.
3. Set a mouse for your computer.
4. The next screen is for **selecting a keyboard**.
5. Set a Keyboard for your computer.
6. The next screen is for **setting your monitor**.
7. First of all, set a **horizontal frequency** for your monitor. (You can enter the frequency directly.)
8. Set a **vertical frequency** for your monitor. (You can enter the frequency directly.)
9. Enter the **model name of your monitor**. This information will not affect the actual execution of X-Window.
10. You have **finished** setting up your monitor.  
**Execute X-Window** after setting other requested hardware.

[Connecting the Monitor](#) | [Base Installation](#) | [Installing the Monitor Driver \(Automatic\)](#) | [Installing the Monitor Driver \(Manual\)](#) | **Natural Color**

## Natural Color

### Natural Color Software Program



One of the recent problems in using a computer is that the color of the images printed out by a printer or other images scanned by a scanner or a digital camera are not the same as those shown on the monitor.

The Natural Color S/W is the very solution for this problem. It is a color administration system developed by Samsung Electronics in association with Korea Electronics & Telecommunications Research Institute (ETRI).

This system is available only for Samsung monitors and makes the color of the images on the monitor the same as the printed or scanned images.

For more information, refer to Help (F1) in the software program.

#### How to install the Natural Color software

Insert the CD included with the Samsung monitor into the CD-ROM Drive. Then, the initial screen of the program Natural Color will be executed. Click Natural Color on the initial screen to install the Natural Color software.

To install the program manually, insert the CD included with the Samsung monitor into the CD-ROM Drive, click the **[Start]** button of Windows and then select **[Execute]**.





Enter `D:\color\eng\setup.exe` and then press the **<Enter>** key.

(If the drive where the CD is inserted is not D:\, enter the applicable drive.)

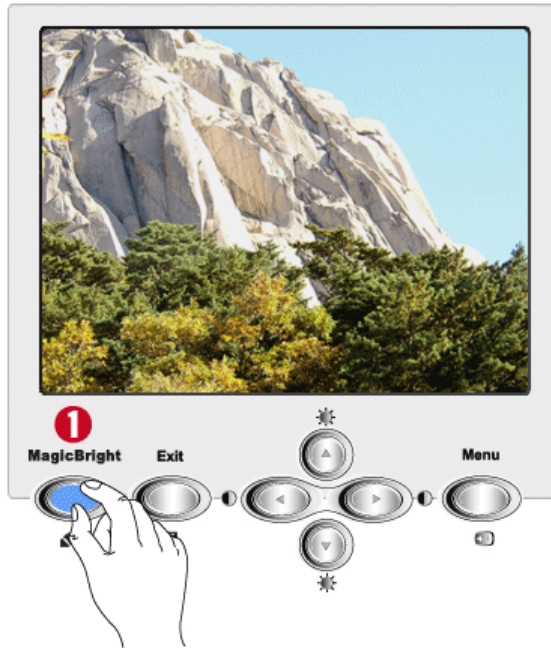
#### How to delete the Natural Color software program





Select **[Setting]/[Control Panel]** on the **[Start]** menu and then double-click **[Add/Delete a program]**.  
Select Natural Color from the list and then click the **[Add/Delete]** button.



1. **[MagicBright **] MagicBright™ is a new feature providing optimum viewing environment depending on the contents of the image you are watching.
2. **[Exit **] Use this button to Exit the active menu or the OSD.
3. **[]** These buttons allow you to highlight and adjust items in the menu. Adjust Brightness and Contrast.
4. **[Menu **] Use this button to open the OSD and activate a highlighted menu item.

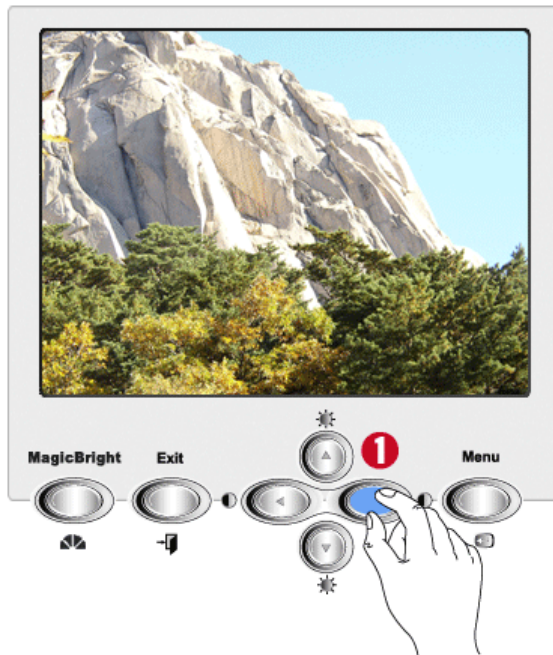
## ➔ MagicBright™

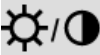


Menu	Description
 <b>MagicBright™</b>	<p>MagicBright™ is a new feature providing the optimum viewing environment depending on the contents of the image you are watching. Currently four different modes are available: Text, Internet, Entertain and Custom. Each mode has its own pre-configured brightness value. You can easily select one of four settings by simply pressing the MagicBright™ control button.</p> <p> : Normal Brightness For documentations or works involving heavy text.</p> <p> : Medium Brightness For working with a mixture of images such as text and graphics.</p> <p> : High Brightness For watching motion pictures such as a DVD or VCD.</p>

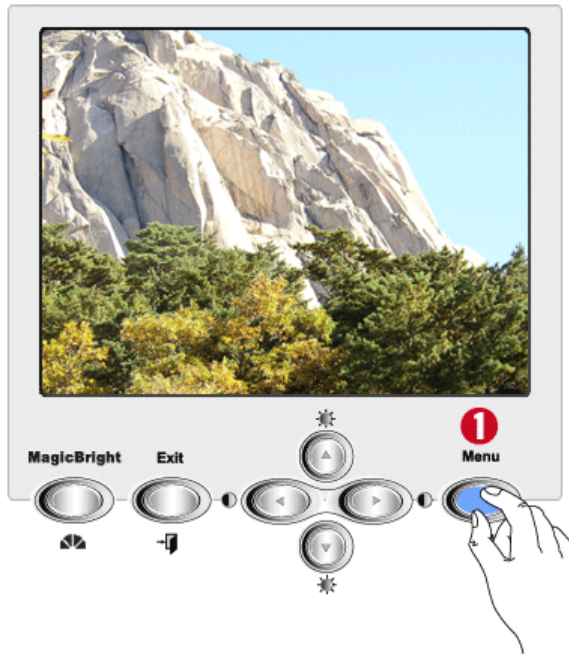
## ➔ Brightness/Contrast





Menu	Description
	Adjust Brightness and Contrast.

➤ OSD Lock/Unlock



Menu	Description
<b>OSD Lock/Unlock</b>	After pushing the "MENU" button more than 10 seconds, OSD function is locked (unlocked).



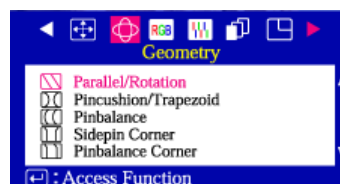












Select an icon that you want to know from the OSD menu to display a text or animation explanation of that icon.

RGB					









Menu	Description	Play/Stop
 <b>Position</b>	Follow these instructions to change the position of the monitor's entire display.	
 <b>Size</b>	Follow these instructions to change the size of the monitor's entire display.	
 <b>Zoom</b>	Follow these instructions to get a close-up or a longshot view of the monitor's viewing area.	

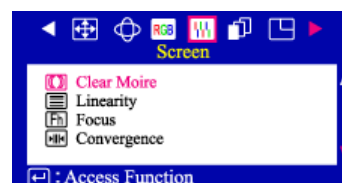


Menu	Description	Play/Stop
 <b>Parallel/Rotation</b>	Adjust the parallelogram setting when the display is leaning left or right; adjust the rotation setting when the entire display is tilted left or right.	
 <b>Pincushion/ Trapezoid</b>	Adjust the pincushion setting when the sides of the display are bowed in or bowed out; adjust the trapezoid setting when the top or bottom of the display is too large or small.	
 <b>Pinbalance</b>	Adjust the pinbalance setting when the sides of the display are bowed towards the left or right.	
 <b>Sidepin Corner</b>	Adjust the sidepin corner correction when the sides of the display are bowed in or bowed out; adjust the side pin corner correction when the top or bottom of the display is too large or small.	
 <b>Pinbalance Corner</b>	Adjust the Pinbalance Corner correction when the sides of the display are bowed in or bowed out; adjust the side pinbalance corner correction when the top or bottom of the display is too large or small.	











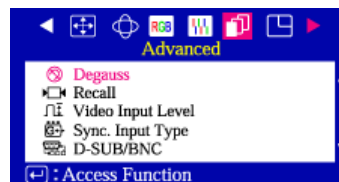


Menu	Description	Play/Stop
	Select this mode when you want to adjust the image according to your preferences. The original setting for the color temperature is 9300K. Follow these steps to change the color temperature and adjust individual R,G,B color balance.	
	Select this mode when you want to adjust the image according to your preferences. The original setting for the color temperature is 5000K. Follow these steps to change the color temperature and adjust individual R,G,B color balance.	
	Standard Red Green Blue (sRGB) is a defined default color space. If a monitor, printer and scanner are all calibrated to the sRGB color characteristics, then you can find color matching from each peripheral. When the monitor is in the sRGB mode, Brightness / Contrast / MagicBright2™ adjustment is not available.	





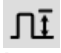









Menu	Description	Play/Stop
 <b>Clear Moire</b>	A 'moiré' pattern can appear on your screen, looking like a series of concentric circles or arcs. To eliminate this pattern, use the clear moiré adjustments.	
 <b>Linearity</b>	Adjust the linearity setting when the display image is compressed at the top or bottom.	
 <b>Focus</b>	Use the focus control when the image displayed on the screen is not sharp in all areas.	
 <b>Convergence</b>	Convergence affects picture clarity. Adjust the horizontal or vertical convergence to properly align the color dots that make up the image.	













Menu	Description	Play/Stop
 <b>Degauss</b>	<p>The Degauss feature will remove color impurities caused by magnetic fields. Do not use the Degauss feature more than once within a 30-minute period. Note: The monitor may buzz momentarily, the image colors may change and the image will jiggle for a few seconds. These effects are normal.</p>	
 <b>Recall</b>	<p>Use the recall feature to reset these monitor settings to their original levels: Position, Size, Parallelogram, Rotation, Pincushion, Trapezoid, Pinbalance, Clear Moire. <b>Note: If you have selected "Yes", all settings listed above will be reset. All other settings will remain the same.</b></p>	
 <b>Video Input Level</b>	<p>Some video cards use video signals higher than 1.0V which causes the display to be very bright. For those video cards, use this feature to select the 1.0 V Level.</p>	
 <b>Sync. Input Type</b>	<p>Use this menu to set your monitor to the correct type of synchronization. Select 'Separate' if the computer is sending a separate synchronization signal. Select 'Sync. on Green' if the computer expects the monitor to synchronize with the green signal it sends. Refer to your computer or video card user's manual to determine the correct setting.</p>	
 <b>D-SUB/BNC</b>	<p>Use this menu to choose between the signal source connected to the BNC connector input and the signal source connected to the D-SUB connector input. Note: When you are finished, wait for a few seconds and the screen will blank then display the image from the new signal source (other computer). A cable must be connected to both inputs to use this function.</p>	





Menu	Description	Play/Stop
 <b>Display timing</b>	<p>You can see the frequency (user control mode) used by the user, the polarity of the operational signals, the default frequency (default mode) set when you buy the monitor and the resolution level.</p> <p>Note: These screens do not allow any changes to the settings, they are for information only.</p>	
 <b>Menu Position</b>	<p>You can change the position where the OSD menu appears on your monitor.</p>	
 <b>Menu Duration</b>	<p>The menu will automatically turn off if no adjustments are made for a certain time period.</p> <p>You can set the amount of time the menu will wait before it turns off.</p>	
 <b>Language</b>	<p>Follow these steps to change the language used in the menu. You can choose one of ten language. English, German, French, Italian, Portuguese, Spanish, Swedish, Russian, Polish, or Magyar. (Some OSD language may not appear in some areas.)</p> <p>The language chosen affects only the language of the OSD. It has no effect on any software running on the computer.</p>	





# MagicTune™ HELP

[Overview](#) | [Installation](#) | [OSD Mode](#) | [Uninstall](#) | [Troubleshooting](#)

## Overview

### What is MagicTune™?

Monitor performance can vary due to the graphics card, host computer lighting conditions and other environmental factors. In order to get the best image on a monitor requires you to adjust it for your unique setting. Unfortunately, the manual controls available to tune the image often prove to be challenging. Proper adjustment (tuning) requires an easy to use program that goes through a step-by-step process to obtain the best overall picture quality.

In most cases even simple adjustments to Brightness, or Contrast require navigation of the multi-level, on-screen display (OSD) menus that are not easy to understand. Furthermore, there is no feedback to assist in correctly setting the controls of the monitor. MagicTune is a software utility that guides you through the tuning process with easy to understand instructions and back ground patterns designed for each monitor control. The display settings for each user can be saved, providing an easy way to select display characteristics in a multi-user environme or having a single user have multiple defined presets based on content and ambient lighting.



### Basic Functionality

MagicTune is a software utility that allows monitor adjustment and color tuning using the [Display Data Channel Command Interface \(DDC/CI\)](#) protocol. All adjustments to the display are controlled via software to eliminate the need to use the monitor on-screen display (OSD).

MagicTune supports Windows™ 98 SE, Me, 2000, XP Home, and XP Professional.

**It is recommended using MagicTune in Windows™ 2000 or later.**

MagicTune allows for quick accurate tuning of the display with the ability to easily save and use monitor configurations that are best suited for you.

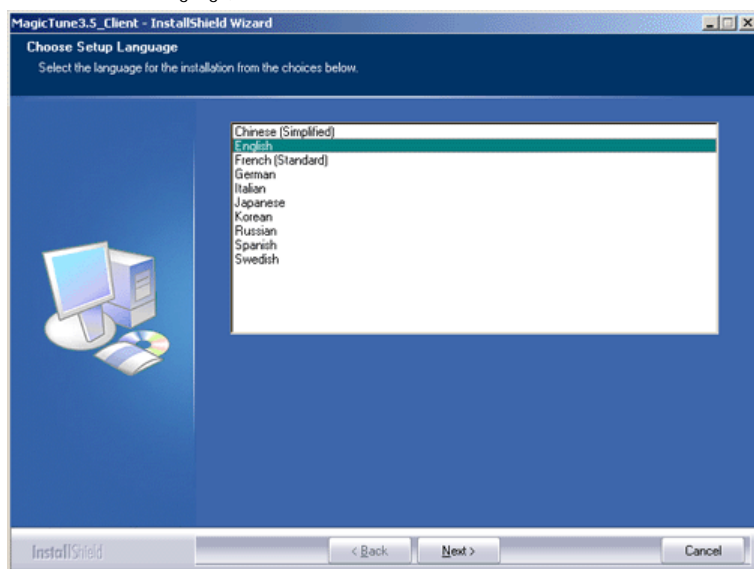


### OSD Mode

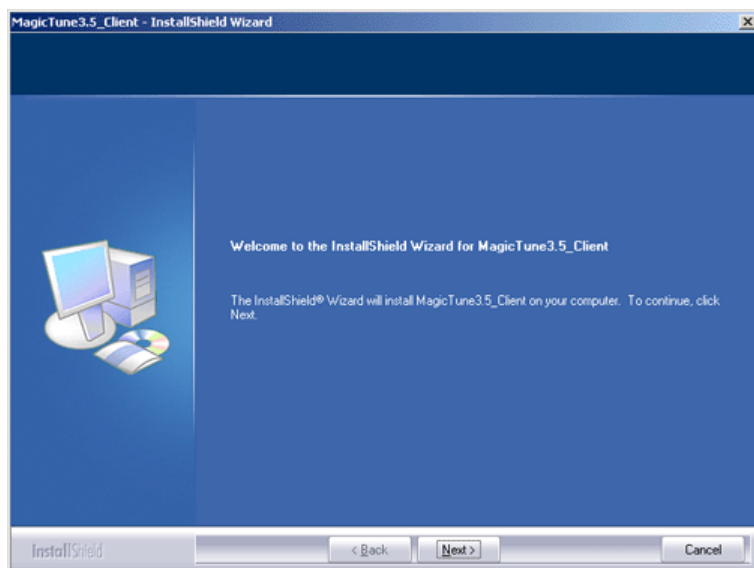
The OSD mode allows easy adjustment of monitor settings without taking pre-defined steps. You can access the desired menu item to set with ease.

## Installation

1. Insert the installation CD into the CD-ROM drive.
2. Click the MagicTune™ installation file.
3. Select installation Language, Click "Next".

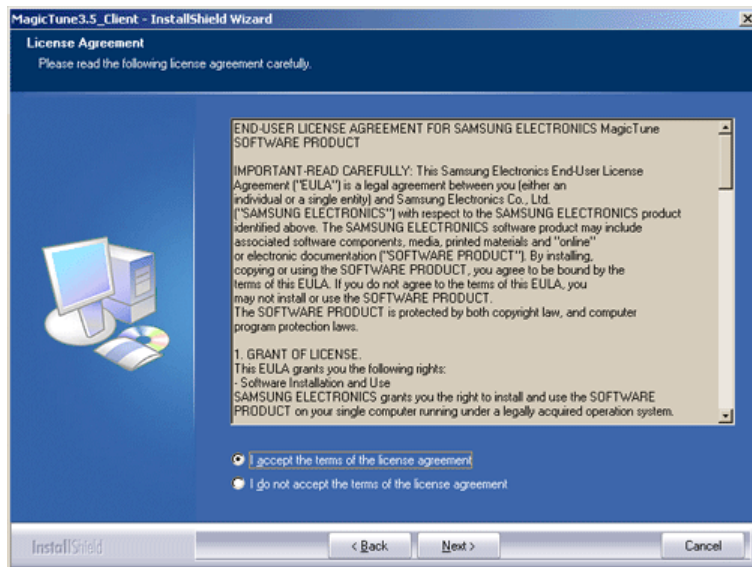


4. When the InstallationShield Wizard window appears, click "Next."

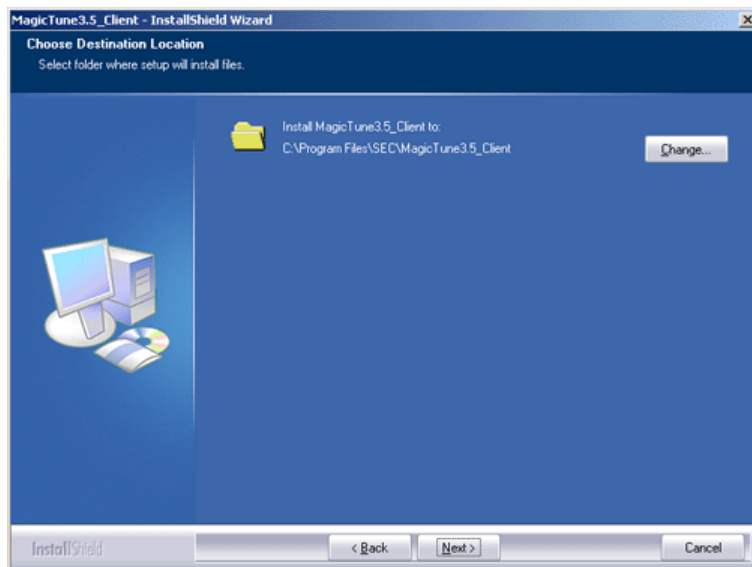


5. Select "I agree to the terms of the license agreement" to accept the terms of use.

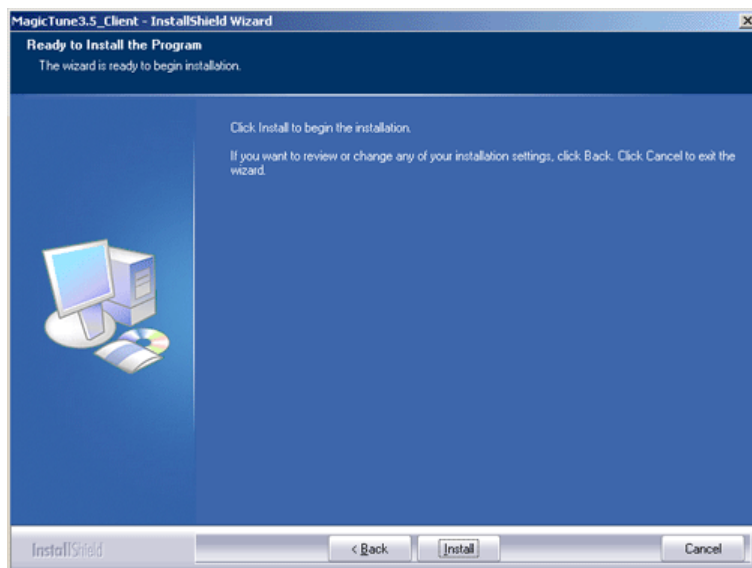




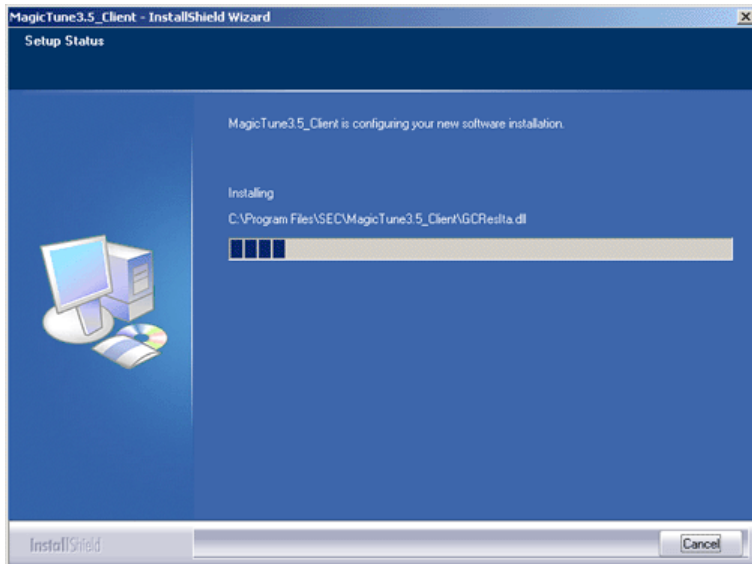
6. Choose a folder to install the MagicTune program.



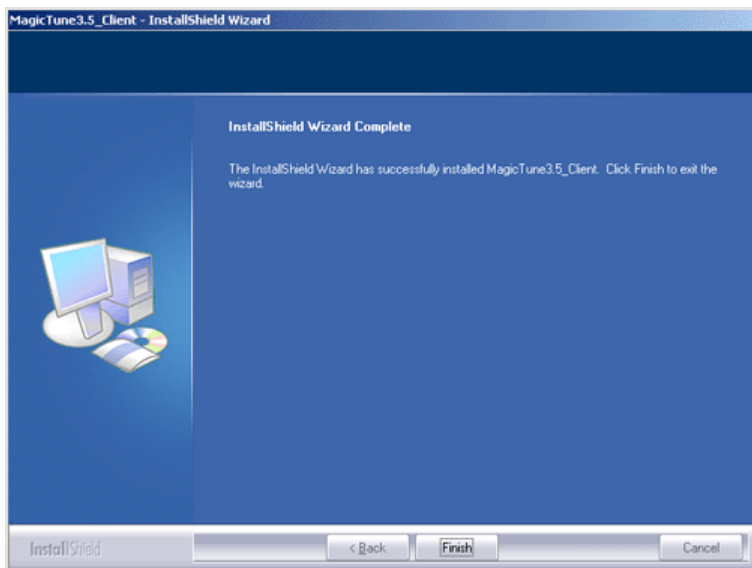
7. Click "Install."



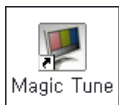
8. The "Installation Status" window appears.



9. Click "Finish."



10. When the installation is complete, the MagicTune executable icon appears on your desktop.



Double-click the icon to start the program.



Magictune execution icon may not appear depending on specification of computer system or monitor. If that happens, press F5 Key.



## ? Installation Problems

The installation of MagicTune™ can be affected by such factors as the video card, motherboard and the network environment.

See "[Troubleshooting](#)" if you have trouble during installation.

## i System Requirements

## OS

- Windows™ 98 SE
- Windows™ Me
- Windows™ 2000
- Windows™ XP Home Edition
- Windows™ XP Professional



**It is recommended using MagicTune in Windows™ 2000 or later.**

## Hardware

- 32MB Memory above
- 25MB Hard disk space above

\* For more information, visit the MagicTune [website](#).

# MagicTune™ HELP

Overview | Installation | **OSD Mode** | Uninstall | Troubleshooting



MagicTune allows for quick accurate tuning of the display with the ability to easily save and use monitor configurations that are best suited for you.

- OSD mode may appear inconsistent with the explanation in guidance book depending on specification of each monitor.
- MagicTune control mode will be different according to monitor models.

## OSD Mode



The OSD mode makes the adjustment of settings on all monitors easy. When selected, each tab on top of the control window displays the general descriptions of the sub-menu items for adjustment. When selected, each tab displays a list of menus. For quick adjustment of the monitor settings, the OSD mode allows easy and convenient access to all tabs and sub-menu items.

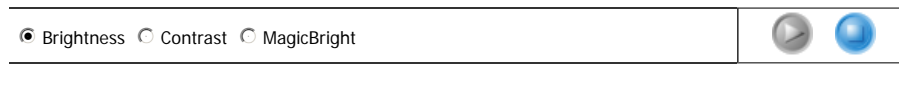
### Button Tab Definition

<b>OK</b>	Applies any changes made and exits MagicTune.
<b>Reset</b>	Restores the display settings to the factory settings.
<b>Cancel</b>	Exits MagicTune without applying the changes made. If you have not made any changes in the control window, clicking "Cancel" does not cause any actions.



### Picture Tab Definition

Allows the user to adjust the screen settings to the desired values.



---

#### Brightness

Makes the entire screen brighter or darker. The detailed data of the images in the dark areas can be lost if the brightness is not adjusted to the proper level. Adjust the brightness for best viewing conditions.

---

#### Contrast

Adjusts the difference in brightness between the bright and dark areas on screen. Determines the crispness of the images.

---

#### MagicBright™

MagicBright™ is a new feature providing the optimum viewing environment depending on the contents of the image you are watching. Currently four different modes are available: Text, Internet, Game, Sport, Movie and Custom. Each mode has its own pre-configured brightness value. You can easily select one of six settings by simply pressing MagicBright control buttons.

- **19" or above**

1. Text: For documentations or works involving heavy text.
2. Internet: For working with a mixture of images such as text and graphics.
3. Game: For watching motion pictures such as a Game.
4. Entertain: For watching motion pictures such as a DVD or VCD.

- **Less than 19"**

1. Text: For documentations or works involving heavy text.
  2. Internet: For working with a mixture of images such as text and graphics.
  3. Entertain: For watching motion pictures such as a DVD or VCD.
- 



#### Color Tab Definition

Adjusts the "warmth" of the monitor background or image color.



Color Tone  Color Control



The tone of the color can be changed.

- Color Tone**
- 5000K - 6500K - 9300K
  - Reset

Adjusts of the monitor image color.

**Color Control** You can change the monitor color to your desired color.

- R - G - B
- sRGB



## Image Tab Definition

Adjusts the Position, Size and Rotation values.



**Geometry 1**

- Rotation
- Size
- Position

**Geometry 2**

- Pincushion
- Pinbalance
- Trapezoid
- Parallelogram

**Other**

- Moire
- Degauss
- Sidepin Corner Top
- Sidepin Corner Bottom
- Pinbalance Corner Top
- Pinbalance Corner Bottom



Adjusts the Position, Size and Rotation values.

**Geometry 1**

- Position
- Size
- Rotation

Adjusts the Pincushion, Pinbalance, Trapezoid and Parallelogram values.

**Geometry 2**

- Pincushion
- Pinbalance
- Trapezoid
- Parallelogram

Adjusts the Moire, Degauss, Sidepin Corner, and Pinbalance Corner values.

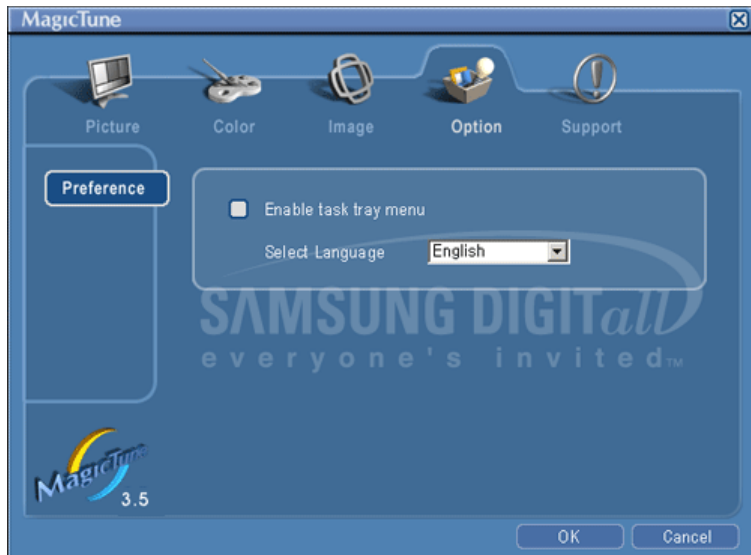
**Other**

- Moire
- Degauss
- Sidepin Corner Top
- Sidepin Corner Bottom
- Pinbalance Corner Top
- Pinbalance Corner Bottom



**Option Tab Definition**

You can configure MagicTune using the following options.



Loads the Preferences Dialog Box. Preferences in use will have an "V" in the check box. To turn on or off any Preference, position the cursor over the box and click.

#### Preferences

- Enable task tray menu .  
- To access the MagicTune menus, click the icon on the [task tray menu].  
The menus are not displayed if the [Enable System Tray] is deselected in [Options] \* [Basic Settings].
- Select Language - The language chosen affects only the language of the OSD.



#### Support Tab Definition

Shows the Asset ID and the version number of the program, and allows you to use the Help feature.



#### Help

Visit the MagicTune website or click to open the Help files (User Manual) if you need any help installing or running MagicTune. The User Manual opens within a basic browser window.

#### Asset ID

you can use the server to control the Client monitor.  
(Server program should be installed to use this program as Client)

#### User Name

Shows the user name that is registered in PC.



**User ID** Shows the user ID that is register in PC.

---

**Server IP** Write down the server IP .

---

**Department** Write down the department.

---

**Location** Write down the location.

---

**Version** Displays the version of MagicTune.

---

# MagicTune™ HELP

Overview | Installation | OSD Mode | **Uninstall** | Troubleshooting

## Uninstall

The MagicTune program can be removed only by using the "Add or Remove Programs" option of the Windows™ Control Panel.

Perform the following steps remove MagicTune.


1. Go to [Task Tray] ' [Start] ' [Settings] and select [Control Panel] in the menu. If the program runs on Windows™ XP, go to [Control Panel] in the [Start] menu.
2. Click the "Add or Remove Programs" icon in Control Panel.
3. In the "Add or Remove Programs" screen, scroll down to find "MagicTune." Click on it to highlight it.
4. Click the "Change/Remove" button to remove the program.
5. Click "Yes" to begin the uninstall process.
6. Wait until the "Uninstall Complete" dialog box appears.


Visit the MagicTune [website](#) for technical support for MagicTune, FAQs (questions and answers) and software upgrades.


## ☐☐☐☐ Troubleshooting


The current computing system is not compatible with MagicTune.


**?** Please press OK and click on the "Shortcut to the MagicTune site" to view our home page for further reference.


 An error may occur when your video/graphic card is not in the 'Available' list.  
(The latest or oldest video cards may not be compatible.)


 Please visit our homepage to see the Troubleshooting section.


 An error may occur if the card maker has modified the video card driver or the graphics chip even when the video card is in the list.


 Please visit our homepage to see the Troubleshooting section.


 Check if your monitor is manufactured by Samsung.  
Products from other manufacturers may cause errors.


 Only Samsung products are able to support this feature.


 An error may occur even when your monitor is manufactured by Samsung but is out of date.  
Check if your monitor is able to support MagicTune.


 This feature is only supported by those monitors that are registered on our homepage.  
Check for the monitor before purchasing it as out-of-date models are not supported.

 An error occurs when no information on EDID (Extended Display Identification Data) exists for the current monitor.  
This happens when from your desktop, Start > Setup > Control Panel > System > Hardware > Device Manager > Monitor is selected, the current "Plug-and-play monitor" is removed and new hardware is searched for but the system couldn't find any "Plug-and-play monitor".

 Please visit our homepage to see the Troubleshooting section.

 An error occurs when replacing the monitor with a new one when the system power is off but the system has not been restarted.

 Please restart the system each time the monitor is replaced before using MagicTune.

 An error occurs when the video card driver is not installed properly.  
This happens when the current video card list is not displayed normally. You can check this via Start > Setup > System > Hardware > Device Manager > Display Adapter.



Visit the video card maker's homepage and download and install the latest driver.  
For more information about the video card, contact the card manufacturer.

**? To ensure normal operation, please restart your system.**



An error occurs when the system is not restarted after installing MagicTune.  
(This is for Win98SE and WinMe only.)



Restart the system before use.

**? For the best performance of MagicTune, adjust to the optimal resolution. Refer to the User Guide for the optimal resolution.**



If you do not adjust to the optimal resolution and perform Color Calibration, the monitor cannot be adjusted to the optimal condition.



Refer to the manual for the optimal resolution.

**? This video card does not support MagicTune. Please install a new video card driver.**



An error occurs when the video card driver is not installed properly.  
This happens when the current video card list is not displayed normally. You can check this from Start > Setup > System > Hardware > Device Manager > Display Adapter.



Visit the video card manufacturer's homepage and download and install the latest driver.  
For more information about the video card, contact the card manufacturer.

**? As the Highlight program uses the communication lines, please exit the Highlight program before you can access MagicTune.**



Some of Samsung CDT monitors support the Highlight feature.  
When using both the Highlight feature and MagicTune simultaneously, conflicts occur, which cause errors.



Make sure to turn OFF Highlight before using MagicTune.



## Troubleshooting

- MagicTune may not work in case monitor is replaced or driver of graphic card is updated while MagicTune is operating. If so, please restart the system.

Symptom	Check List	Solutions
Check when MagicTune does not function properly.	MagicTune feature is found only on PC (VGA) with Window OS that supports Plug and Play.	<p>* To check whether your PC is available for MagicTune feature, follow the steps below (When Windows™ is XP);</p> <p>Control Panel -&gt; Performance and Maintenance -&gt; System -&gt; Hardware -&gt; Device Manager -&gt; Monitors -&gt; After deleting Plug and Play monitor, find 'Plug and Play monitor' by searching new Hardware.</p> <p>MagicTune is an additional software for the monitor. Some graphic cards may not support your monitor. When you have a problem with</p>

the graphic card, visit our website to check the compatible graphic card list provided.  
<http://www.samsung.com/monitor/magictune>

MagicTune™ doesn't work properly.      Have you changed your PC or video graphic card?      Download the latest program. The program can be downloaded  
<http://www.samsung.com/monitor/magictune>.

- Visit the MagicTune [website](#) for technical support for MagicTune, FAQs (questions and answers) and software upgrades.
- Visit the MagicTune [website](#) and download the installation software for MagicTune MAC.

---

The MagicTune™ program is an additional program for monitor products. Some computing systems that install either an older or the latest video driver are not compatible with MagicTune™. Please visit the MagicTune™ Website for technical support for MagicTune™.

Specifications subject to change without notice.  
MagicTune™ is a trademark of SAMSUNG ELECTRONICS CO., Inc.  
Windows™ is a registered trademark of Microsoft Corp.  
Other trademarks are property of their respective holders.



● Check List



Before calling for service, check the information in this section to see if you can remedy any problems yourself. If you do need assistance, please call [the phone number on the Information section](#) or [contact your dealer](#).

Symptom	Check List	Solutions
No images on the screen. I cannot turn on the monitor.	Is the power cord connected properly?	Check the power cord connection and supply.
	Can you see " <b>No Connection, Check Signal Cable</b> " on the screen?	Check the signal cable connection.
	If the power is on, reboot the computer to see the initial screen (the login screen), which can be seen.	If the initial screen (the login screen) appears, boot the computer in the applicable mode (the safe mode for Windows ME/XP/2000) and then change the frequency of the video card. (Refer to the <a href="#">Preset Timing Modes</a> )  Note: If the initial screen (the login screen) does not appear, <a href="#">contact a service center or your dealer</a> .
	Can you see " <b>Sync. Out of Range, 68.7kHz 168Hz PP</b> " on the screen?	You can see this message when the signal from the video card exceeds the maximum resolution and frequency that the monitor can properly handle.  Adjust the maximum resolution and frequency that the monitor can handle properly.
I cannot see the On Screen Display.	There is no image on the screen. Is the power indicator on the monitor blinking at 1 second intervals?	The monitor is in PowerSaver mode.  Press any key on the keyboard to activate the monitor and restore the image on the screen.
	Have you locked the <b>On Screen Display (OSD)</b> Menu to prevent	Unlock the OSD by pressing the Menu button for at least 10 seconds.

	changes?	
The image on the screen is shaking.	Check the monitor configuration to see if it is in Interlace Mode. (Interlace Mode: Vertical frequency 43Hz, 87Hz(i), etc)	The signal from the video card exceeds the maximum resolution and frequency of the monitor.
	Are there any magnetic products such as a power adapter, speaker or a high voltage wire near by?	Move the monitor away from anything that can create a strong magnetic field.
	Is the voltage stable?	The screen image can appear to shake or vibrate at a particular time of day due to low supply voltage.
	The screen image can also appear to shake or vibrate if there is a problem with the video card or the computer's main board.	
The screen shows strange colors or just black and white.	Is the screen displaying only one color as if looking at the screen through a cellophane paper?	Check the signal cable connection. Make sure the video card is fully inserted in its slot.
	Have the screen colors become strange after running a program or due to a crash between applications?	Reboot the computer.
	Has the video card been set properly?	Set the video card by referring to the video card manual.
The screen suddenly has become unbalanced.	Have you changed the video card or the driver?	Adjust screen image position and size using the OSD.
	Have you adjusted the resolution or frequency on the monitor?	Adjust the resolution and frequency of the video card. (Refer to the <a href="#">Preset Timing Modes</a> ).
	The screen can be unbalanced due to the cycle of the video card signals. Readjust Position by referring to the OSD.	
The screen is out of focus or OSD cannot be adjusted.	Have you adjusted the resolution or frequency on the monitor?	Adjust the resolution and frequency of the video card. (Refer to the <a href="#">Preset Timing Modes</a> ).
The screen is partially distorted.	Are there any magnetic products such as an adapter, speaker or a high voltage wire near the monitor?	Enter the OSD and perform a "Degauss". Keep the monitor away from any magnetic products.
LED is blinking but no images on the screen.	Is the frequency properly adjusted when checking the Display Timing on the menu?	Adjust the frequency properly by referring to the video card manual and the <a href="#">Preset Timing Modes</a> .  (The maximum frequency per resolution may differ from product to product.)
There are only 16 colors shown on the screen.	Have the Windows colors been set properly?	Windows ME/2000/XP: Set the colors properly at the <b>Control Panel</b> →



The screen colors have changed after changing the video card.	Has the video card been set properly?	<b>Display → Settings.</b> Set the video card by referring to the video card manual.
There is a message that reads "Unrecognized monitor, Plug & Play (VESA DDC) monitor found".	Have you installed the monitor driver?  See the video card manual to see if the Plug & Play (VESA DDC) function can be supported.	Install the monitor driver according to the <a href="#">Driver Installation Instructions</a> .  Install the monitor driver according to the <a href="#">Driver Installation Instructions</a> .
Check when MagicTune does not function properly.	MagicTune feature is found only on PC (VGA) with Window OS that supports Plug and Play.	* To check whether your PC is available for MagicTune feature, follow the steps below (When Windows is XP);  Control Panel -> Performance and Maintenance -> System -> Hardware -> Device Manager -> Monitors -> After deleting Plug and Play monitor, find 'Plug and Play monitor' by searching new Hardware.  MagicTune is an additional software for the monitor. Some graphic cards may not support your monitor. When you have a problem with the graphic card, visit our website to check the compatible graphic card list provided. <a href="http://www.samsung.com/monitor/magictune">http://www.samsung.com/monitor/magictune</a>
MagicTune™ doesn't work properly.	Have you changed your PC or video graphic card?	Download the latest program. The program can be downloaded <a href="http://www.samsung.com/monitor/magictune">http://www.samsung.com/monitor/magictune</a> .



Visit the MagicTune™ website and download the installation software for MagicTune™ MAC.

● **Check the following items if there is trouble with the monitor.**

1. Check if the power cord and the video cables are properly connected to the computer.
2. Check if the computer beeps more than 3 times when booting.  
(If it does, request an after-service for the main board of the computer.)
3. If you installed a new video card or if you assembled the PC, check if the installed adapter (video) driver and the monitor driver.
4. Check if the scanning ratio of the video screen is set at 50Hz or 160 Hz .  
(Do not exceed 60Hz when using the maximum resolution.)
5. If you have problems in installing the adapter (video) driver, boot the computer in Safe Mode, remove the Display Adapter at the "**Control Panel→System→Device Administrator**" and then reboot the computer to reinstall the adapter (video) driver.



If problems repeatedly occur, [contact an authorized service center](#).

[Check List](#)

[Q & A](#)

[Self-Test Feature Check](#)

● **Q & A**

Question	Answer
How can I change the frequency?	Frequency can be changed by reconfiguring the video card.  Note that video card support can vary, depending on the version of the driver used. (Refer to the computer or the video card manual for details.)
How can I adjust the resolution?	Windows ME/XP/2000 : Set the resolution at the <b>Control Panel→Display→Settings</b> .  * Contact the video card manufacturer for details.

How can I set the Power Saving function?

Windows ME/XP/2000 : Set the function at BIOS-SETUP of the computer or the screen saver. (Refer to Windows/Computer Manual).

The monitor makes a sound when it is turned on.

This is normal as some sound may be generated when the metal case and the electromagnet, which are installed to block any electromagnetic waves, interact with each other.

How can I clean the outer case/Picture tube?

Disconnect the power cord and then clean the monitor with a soft cloth, using either a cleaning solution or plain water.

Do not leave any remains of the detergent nor scratch the case. Do not allow any water to go inside the monitor.

[Check List](#)

[Q & A](#)

[Self-Test Feature Check](#)

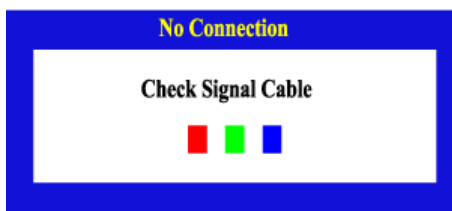
### Self-Test Feature Check

[Self-Test Feature Check](#) | [Warning Messages](#) | [Environment](#) | [Useful Tips](#)

**Your monitor provides a self test feature that allows you to check whether your monitor is functioning properly.**

### Self-Test Feature Check

1. Turn off both your computer and the monitor.
2. Unplug the video cable from the back of the computer.
3. Turn on the monitor.  
If the monitor is functioning properly, you will see a box in the illustration below.

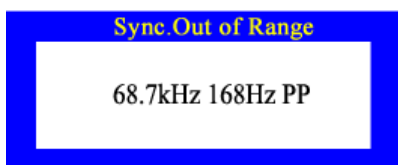


This box appears during normal operation if the video cable becomes disconnected or damaged.

4. Turn off your monitor and reconnect the video cable; then turn on both your computer and the monitor.  
If your monitor screen remains blank after using the previous procedure, check your video controller and computer system; your monitor is functioning properly.

### Warning Messages

If there is something wrong with the input signal, the message below appears on the screen or the screen goes blank although the power indicator LED is still on. The message may indicate that the monitor is out of scan range or that you need to check the signal cable.



### Environment

**The location and the position of the monitor may influence the quality and other features of the monitor.**

1. If there are any sub woofer speakers near the monitor, unplug and relocate the woofer to another room.
  2. Remove all electronic devices such as radios, fans, clocks and telephones that are within 3 feet (one meter) of the monitor.
  3. Degauss the monitor if any devices were removed from the area.
- 

#### **Useful Tips**

- A monitor recreates visual signals received from the computer. Therefore, if there is trouble with the computer or the video card, this can cause the monitor to become blank, have poor coloring, noise, Sync. Out of Range, 68.7kHz 168Hz PP, etc. In this case, first check the source of the problem, and then contact a service center or your dealer.

- **Judging the monitor's working condition**

If there is no image on the screen or a "Sync. Out of Range, 68.7kHz 168Hz PP" message comes up, disconnect the cable from the computer while the monitor is still powered on.

- If there is a message coming up on the screen or if the screen goes white, this means the monitor is in working condition.
- In this case, check the computer for trouble.



● General

General	
Model Name	SyncMaster 1100MB
Picture Tube	
Type	21" DynaFlat (20" viewable)
Deflection angle	90 °
Dot Pitch	0.20 mm (Horizontal)
Screen type	Aluminized tri-color phosphor dot trio with black matrix. Anti-doming invar shadow mask. Multi-layer coated with anti-static.
Resolution	
Optimum resolution	1280 x 1024 @ 85 Hz
Maximum resolution	2048 x 1536 @ 80 Hz
Active Display	
Horizontal	393 ± 3 mm
Vertical	295 ± 3 mm
Synchronization	
Horizontal	30 ~ 130 kHz
Vertical	50 ~ 160 Hz
Input Signal, Terminated	
RGB Analog 0.7Vp-p ± 5%, Positive bright, 75 Ω ± 5%(terminated), Separate H/V sync, Composite, SOG, TTL level, positive or negative.	
Input Signal Definition	
Signal connectors	15-pin 3-row mini D-sub connector, BNC
Signal cable	15pin-to-15pin D-sub cable
Display Color	
Unlimited	

<b>Maximum Pixel Clock</b>	
360 MHz	
<b>Power Supply</b>	
90 ~ 264VAC rms, 60/50 Hz ± 3 Hz	
<b>Power Consumption</b>	
130 W (nominal)	
<b>Dimensions (WxDxH)</b>	
504 x 500 x 508 mm / 19.8 x 19.7 x 20 inch (After installation of Stand)	
<b>Weight</b>	
28.0 kg	
<b>Environmental considerations</b>	
Operating	Temperature 32°F ~ 104°F(0°C ~ 40°C) Humidity 10% ~ 80%, non-condensing
Storage	Temperature -4°F ~ 113°F (-20°C ~ 45°C) Humidity 5% ~ 95%, non-condensing
<b>Plug and Play Capability</b>	
This monitor can be installed on any Plug & Play compatible system. Interaction of the monitor and computer systems will provide the best operating conditions and monitor settings. In most cases, monitor installation will proceed automatically, unless the user wishes to select alternate settings.	
<b>Note : Design and specifications are subject to change without prior notice.</b>	

[General](#) | [PowerSaver](#) | [Preset Timing Modes](#)

### ● PowerSaver

This monitor has a built-in power management system called PowerSaver. This system saves energy by switching your monitor into a low-power mode when it has not been used for a certain amount of time. The monitor automatically returns to normal operation when you press a key on the keyboard. For energy conservation, turn your monitor OFF when it is not needed, or when leaving it unattended for long periods. The PowerSaver system operates with a VESA DPMS compliant video card installed in your computer. Use a software utility installed on your computer to set up this feature.

State	Normal Operation	Power-off mode EPA/ENERGY 2000
Power Indicator	Green	Green, Blinking
Power Consumption	130 W (nominal)	Less than 2 W

[General](#) | [PowerSaver](#) | [Preset Timing Modes](#)

### ● Preset Timing Modes

If the signal transferred from the computer is the same as the following Preset Timing Modes, the screen will be adjusted automatically. However, if the signal differs, the screen may go blank while the power LED is on. Refer to the video card manual and adjust the screen as follows.

--	--	--	--

Display Mode	Horizontal Frequency (kHz)	Vertical Frequency (Hz)	Pixel Clock (MHz)	Sync Polarity (H/V)
IBM, 720 x 400	31.469	70.087	28.322	-/+
VESA, 640 x 480	43.269	85.008	36.000	-/-
VESA, 800 x 600	53.674	85.061	56.250	+/+
VESA, 1024 x 768	68.677	84.997	94.500	+/+
VESA, 1280 x 1024	91.146	85.024	157.50	+/+
VESA, 1600 x 1200	106.250	85.000	229.50	+/+
VESA, 1920 x 1440	112.500	75.000	297.00	-/+
VESA(CVT), 2048 x 1536	120.384	75.000	340.50	-/+



#### Horizontal Frequency

The time to scan one line connecting the right edge to the left edge of the screen horizontally is called Horizontal Cycle and the inverse number of the Horizontal Cycle is called Horizontal Frequency. Unit: kHz

#### Vertical Frequency

Like a fluorescent lamp, the screen has to repeat the same image many times per second to display an image to the user. The frequency of this repetition is called Vertical Frequency or Refresh Rate. Unit: Hz



## ● Service

---

The address and phone number of the company can be changed without previous notice.

---

- **CANADA :**  
Samsung Electronics Canada Inc., Customer Service  
55 Standish Court Mississauga, Ontario L5R 4B2  
Canada

Samsung Electronique Canada Inc., Service à la Clientèle  
55 Standish Court  
Mississauga, Ontario L5R 4B2  
Canada

Tel. 1-800-SAMSUNG (7267864)  
Fax. (905) 542-1199  
<http://www.samsung.ca>

- **MAXICO :**  
Samsung Electronics Mexico, S.A. de C.V.  
Via Lopez Portillo No. 8,  
Col. San Francisco Chilpan,  
Tultitlán, Estado de México,  
C.P. 54940

Tel. 01-800-SAMSUNG (7267864)  
Fax. 01.800.849.1743  
<http://www.samsung.com/mx>

- **U.S.A :**  
Samsung Electronics America, Inc.  
105 Challenger Road  
Ridgefield Park, NJ 07660-0511

Tel. 1-800-SAMSUNG (7267864)  
<http://www.samsung.com>

- **ARGENTINE :**  
Tel. 0800-333-3733  
<http://www.samsung.com/ar>

- **BOLIVIA :**  
Fax. 56-2-485-8502  
<http://www.samsung.com/cl>



- **BRAZIL :**  
Samsung Electronica da Amazonia Ltda  
Rua Prof. Manoelito de ornellas 303, Terreo B.  
Chacara Sto. Antonio, 04719-040  
Sao Paulo, SP, Brazil

Tel. 0800-124-421  
<http://www.samsung.com/br>

- **CHILE :**  
Samsung Electronics Chile LTDA.  
Avda. Americo Vespucio Sur 100, Oficina 102  
Las Condes, Santiago, Chile

Tel. 800-726-7864(SAMSUNG)  
Fax. 56-2-485-8502  
<http://www.samsung.com/cl>

- **COST RICA :**  
Tel. 0-800-507-7267  
<http://www.samsung.com/latin>

- **ECUADOR :**  
Tel. 1-800-10-7267  
<http://www.samsung.com/latin>

- **EL SALVADOR :**  
Tel. 800-6225  
<http://www.samsung.com/latin>

- **GUATEMALA :**  
Tel. 1-800-299-0013  
<http://www.samsung.com/latin>

- **JAMAICA :**  
Tel. 1-800-234-7267  
<http://www.samsung.com/latin>

- **PANAMA :**  
Tel. 800-7267  
<http://www.samsung.com/latin>

- **PUERTO RICO :**  
Tel. 1-800-682-3180  
<http://www.samsung.com/latin>

- **REP. DOMINICA :**  
Tel. 1-800-751-2676  
<http://www.samsung.com/latin>

- **TRINIDAD & TOBAGO :**  
Tel. 1-800-7267-864  
<http://www.samsung.com/latin>

- **VENEZUELA :**  
Tel. 1-800-100-5303  
<http://www.samsung.com/latin>

- **BELGIUM :**  
Samsung Electronics Benelux BV  
Nijverheidsstraat?8?160?ommelgem,  
Belgium

Tel. 02 201 2418  
<http://www.samsung.be>

- **CZECH REPUBLIC :**  
Tel. 844 000 844
  
- **DENMARK :**  
Samsung Electronics Nordic AB  
194 27, Johanneslundsvägen 2, Upplands Väsby  
  
Tel. 38 322 887  
<http://www.samsung.com/dk>
  
- **FINLAND :**  
Samsung Electronics Nordic AB  
194 27, Johanneslundsvägen 2, Upplands Väsby  
  
Tel. 09 693 79 554  
<http://www.samsung.com/fi>
  
- **FRANCE :**  
Samsung Service Consommateurs  
66 rue des Vanesses  
BP 50116 - Villepinte -95950 ROISSY cedex  
France  
  
Tel. 08 25 08 65 65 (0,15?min)  
Fax. 01 48 63 06 38 (0,15?min)  
<http://www.samsung.fr>
  
- **GERMANY :**  
Samsung Electronics GmbH  
Samsung House  
Am Kronberger Hang 6  
65824 Schwalbach/Ts.  
Deutschland  
  
Tel. 01805 - 121213 (?0,12/Min)  
Fax. 01805 - 121214 (?0,12/Min)  
<http://www.samsung.de>
  
- **HUNGARY :**  
Samsung Electronics Magyar Rt.  
Szépvölgyi Business Park, 1037 Budapest,  
Szépvölgyi út 35-37  
  
Tel. 06 40 985 985  
<http://www.samsung.com/hu>
  
- **ITALIA :**  
Samsung Electronics Italia S.p.A  
Via C. Donat Cattin, 5  
20063, Cernusco Sul Naviglio (MI)  
  
Tel. 199 153 153  
Fax. 02 92141801  
<http://www.samsung.com/it>
  
- **LUXEMBURG :**  
Samsung Electronics Benelux BV  
Nijverheidsstraat 8 1600 Ommelgem,  
Belgium  
  
Tel. 02 261 03 710  
<http://www.samsung.lu>

- **NETHERLANDS :**  
Samsung Electronics Benelux BV  
P.O. Box 681 2600 AR Delft, The Netherlands  
  
Tel. 0900 20 200 88 (?0.10/Min)  
<http://www.samsung.nl>
  
- **NORWAY :**  
Samsung Electronics Nordic AB  
194 27, Johanneslundsvägen 2, Upplands Väsby  
  
Tel. 231 627 22  
<http://www.samsung.com/no>
  
- **POLAND :**  
Samsung Electronics Polska sp. Z o.o.  
Dział Obsługi Klienta  
02-678 Warszawa; ul. Szturmowa 2a  
  
Tel. 0 801 801 881  
Fax. +48-22-607 4448  
<http://www.samsung.com/pl>
  
- **PORTUGAL :**  
SAMSUNG ELECTRONICA PORTUGUESA, S.A  
Rua Cesario Verde, no 5-4, Piso  
2795-753 Queijas-Portugal  
  
Tel. 80 8 200 128  
<http://www.samsung.pt>
  
- **SLOVAKIA :**  
Tel. 0850 123 989
  
- **SPAIN :**  
SAMSUNG ELECTRONICS IBERIA, S.A  
Ciencies, 55-85 (Polígono Pedrosa)  
08908 HOSPITALET DE LLOBREGAT (Barcelona)  
  
Tel. 902 10 11 30  
<http://www.samsung.com/es>
  
- **SWEDEN :**  
Samsung Electronics Nordic AB  
194 27, Johanneslundsvägen 2, Upplands Väsby  
  
Tel. 08 585 367 87  
<http://www.samsung.com/se>
  
- **U.K :**  
Samsung Electronics U.K. Ltd.  
Unit C, Stafford Park 12  
Telford, Shropshire  
TF3 3BJ  
The United Kingdom  
  
Tel. 0870 242 0303  
Fax. 01952 297617  
<http://www.samsung.co.uk>
  
- **RUSSIA :**  
117545 Россия, Москва, ул. Дорожная, д.3, корп. 6  
  
Tel. 8-800-200-0400  
<http://www.samsung.ru>

- **UKRAINE :**  
30A, Spaska St, Floor 3, Kiev 04070, Ukraine  
  
Tel. 8-800-502-0000  
Fax. +380 (44) 537 59 48  
<http://www.samsung.com/ur>
  
- **AUSTRALIA :**  
Samsung Electronics Australia  
7 Parkview Drive, Homebush Bay NSW 2127  
  
Tel. 1300 362 603  
Fax. (612) 9763 5750  
<http://www.samsung.com/au>
  
- **CHINA :**  
北京市朝阳区利泽中二路2号B座二层  
三星电子(北京)技术服务有限公司 邮编: 100102  
  
Tel. 800-810-5858, 010- 6475 1880  
Fax. 01.800.849.1743  
<http://www.samsungservice.com.cn>
  
- **HONG KONG :**  
Customer Service Center  
11/F, Phase 2, MTL warehouse Building, Berth One,  
Kwai Chung, N.T., Hong Kong  
  
Tel. 2862 6001  
Fax. 2862 6971  
<http://www.samsung.com/hk>
  
- **INDIA :**  
2nd fl CC-28 , Nehru Enclave Kalkaji New Delhi India  
110019  
  
Tel. 3030 8282  
1600 1100 11  
<http://www.samsung.com/in>
  
- **INDONESIA :**  
Pusat Pelayanan Purna Jual. PT.SEIN(Samsung Electronics Indonesia)  
Jl. Raya Pasar Minggu No.34, Jakarta Selatan  
  
Tel. 0800-112-8888  
Fax. (021)797-5080  
<http://www.samsung.com/id>
  
- **JAPAN :**  
Tel. 0120-327-527  
Fax. 81-3-3527-5533  
<http://www.samsung.com/jp>
  
- **MALAYSIA :**  
Samsung Malaysia Electronics Sdn. Bhd.  
3B-1-1. Level 1, Block 3B, Plaza Sentral, Jalan Stesen Sentral 5, KL Sentral , 50470, Kuala Lumpur, Malaysia  
  
Tel. 1800-88-9999  
Fax. 03-22636759  
<http://www.samsung.com/my>
  
- **PHILIPPINES :**  
Samsung Electronics Phils. Corp.  
Ground Floor, Bonaventure Plaza, Ortigas Ave. Greenhills, San Juan

Tel. 1800-10-SAMSUNG (7267864)  
<http://www.samsung.com/ph>

● **SINGAPORE :**

Samsung Asia Pte. Ltd.  
20 Toh Guan Road Accord Distri Centre #01-01 Singapore 608839

Tel. 1800-SAMSUNG (7267864)  
Fax. (65) 6565 7513  
<http://www.samsung.com/sg>

● **THAILAND :**

Thai Samsung Electronics Co.,Ltd  
Service Department 1,6 floor Boonmitr Building 138 Silom Rd.,  
Suriyawong Bangrak Bangkok 10500

บริษัท ไทยซัมซุงอิเล็คโทรนิคส์ จำกัด  
เลขที่ 138 อาคารบุญมิตร ชั้น 1,6 ถนนสีลม  
แขวงสุริยวงค์ เขตบางรัก กรุงเทพฯ 10500

Tel. 1800-29-3232  
02-689-3232  
Fax. 02-689-3298  
<http://www.samsung.com/th>

● **TAIWAN :**

北市內湖區提頂大道二段301號2樓  
台灣三星電子股份有限公司

Tel. 0800-329-999  
<http://www.samsung.com/tw>

● **VIETNAM :**

CÔNG TY ĐIỆN TỬ SAMSUNG VINA  
938 QUỐC LỘ 1A , PHƯỜNG LINH TRUNG , QUẬN THỦ ĐỨC , TP.HCM

Tel. 1 800 588 889  
Fax. (084) 08-8965566  
<http://www.samsung.com/vn>

● **SOUTH AFRICA :**

Samsung Electronics South Africa (PTY) LTD  
Unit 5/6, Hi Tech Villiage, Superior Road, Midrand  
South Africa

Tel. 0860 726786 (SAMSUNG)  
Fax. 27-11-545-6112  
<http://www.samsung.com/za>

● **U.A.E :**

Tel. 800SAMSUNG (7267864)  
Fax. 009714 8837714  
<http://www.samsung.com/mea>

---

[Service](#) | [Terms](#) | [Authority](#) | [Correct Disposal](#) |

● **Terms**

● **Dot Pitch**

The image on a monitor is composed of red, green and blue dots. The closer the dots, the higher the resolution. The distance between two dots of the same color is called the 'Dot

Pitch'. Unit: mm

- **Vertical Frequency**

The screen must be redrawn several times per second in order to create and display an image for the user. The frequency of this repetition per second is called Vertical Frequency or Refresh Rate. Unit: Hz

Example: If the same light repeats itself 60 times per second, this is regarded as 60 Hz.

- **Horizontal Frequency**

The time to scan one line connecting the right edge to the left edge of the screen horizontally is called Horizontal Cycle. The inverse number of the Horizontal Cycle is called Horizontal Frequency. Unit: kHz

- **Interlace and Non-Interlace Methods**

Showing the horizontal lines of the screen from the top to the bottom in order is called the Non-Interlace method while showing odd lines and then even lines in turn is called the Interlace method. The Non-Interlace method is used for the majority of monitors to ensure a clear image. The Interlace method is the same as that used in TVs.

- **Plug & Play**

This is a function that provides the best quality screen for the user by allowing the computer and the monitor to exchange information automatically. This monitor follows the international standard VESA DDC for the Plug & Play function.

- **Resolution**

The number of horizontal and vertical dots used to compose the screen image is called 'resolution'. This number shows the accuracy of the display. High resolution is good for performing multiple tasks as more image information can be shown on the screen.

Example: If the resolution is 1024 X 768, this means the screen is composed of 1024 horizontal dots (horizontal resolution) and 768 vertical lines (vertical resolution).

- **MagicBright™**

MagicBright™ is a monitor that provides a picture twice as bright and sharp than existing monitors so as to provide a user environment more suited for documentation and internet surfing. By using the button on the front panel of the monitor, you can easily set one of the 3 brightness and sharpness settings depending on your needs.

---

[Service](#) | [Terms](#) | [Authority](#) | [Correct Disposal](#)

- **Authority**

**Information in this document is subject to change without notice.**

**© 2005 Samsung Electronics Co., Ltd. All rights reserved.**

Reproduction in any manner whatsoever without the written permission of Samsung Electronics Co., Ltd. is strictly forbidden.

Samsung Electronics Co., Ltd. shall not be liable for errors contained herein or for incidental or consequential damages in connection with the furnishing, performance, or use of this material.

*Samsung* is the registered trademark of Samsung Electronics Co., Ltd.; *Microsoft*, *Windows* and *Windows NT* are registered trademarks of Microsoft Corporation; *VESA*, *DPMS* and *DDC* are registered trademarks of Video Electronics Standard Association; the *ENERGY STAR®* name and logo are registered trademarks of the U.S. Environmental Protection Agency (EPA). As an ENERGY STAR® Partner, Samsung Electronics Co., Ltd. has determined that this product meets the ENERGY STAR® guidelines for energy efficiency. All other product names mentioned herein may be the trademarks or registered trademarks of their respective owners.

**Class B**

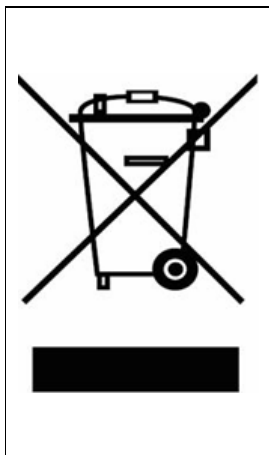
This device is a Class B digital apparatus.

For Safety and EMC compliance guide, you may refer to "Regulatory" Guide.



## Correct Disposal of This Product (Waste Electrical & Electronic Equipment) - Europe only

---



**(Applicable in the European Union and other European countries with separate collection systems)**

This marking shown on the product or its literature, indicates that it should not be disposed with other household wastes at the end of its working life. To prevent possible harm to the environment or human health from uncontrolled waste disposal, please separate this from other types of wastes and recycle it responsibly to promote the sustainable reuse of material resources.

Household users should contact either the retailer where they purchased this product, or their local government office, for details of where and how they can take this item for environmentally safe recycling.

Business users should contact their supplier and check the terms and conditions of the purchase contract. This product should not be mixed with other commercial wastes for disposal.

## Free Manuals Download Website

<http://myh66.com>

<http://usermanuals.us>

<http://www.somanuals.com>

<http://www.4manuals.cc>

<http://www.manual-lib.com>

<http://www.404manual.com>

<http://www.luxmanual.com>

<http://aubethermostatmanual.com>

Golf course search by state

<http://golfingnear.com>

Email search by domain

<http://emailbydomain.com>

Auto manuals search

<http://auto.somanuals.com>

TV manuals search

<http://tv.somanuals.com>