

SRD-470D

4CH, H.264, 120fps @ D1, DVD



Summary

Providing broadest range of features, including the most robust H.264 compression method, up to 2TB of massive storage capacity inside, audio recording, diverse search methods, and DVR-to-Client architecture, Samsung's SRD offers optimum performance for digital video recording solution.

Features

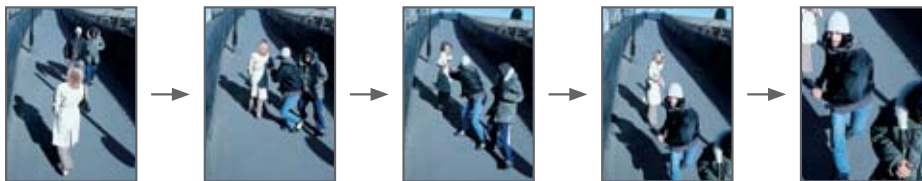
- 4ch CIF real-time DVR
- Video (H.264) / Audio (ADPCM)
- CIF Resolution real-time recording capability (Full 4CIF resolution recording support)
- Up to 4ch audio inputs and 1ch audio output
- Combined BNC and VGA video output for main display (up to 1280 x 1024)
- SRD-470D : SATA I/F HDD support (Internal Max. HDD x 1)
- HDD & DVD SATA interface
- DDNS
- Built-in web viewer
- DVD R/W

H.264

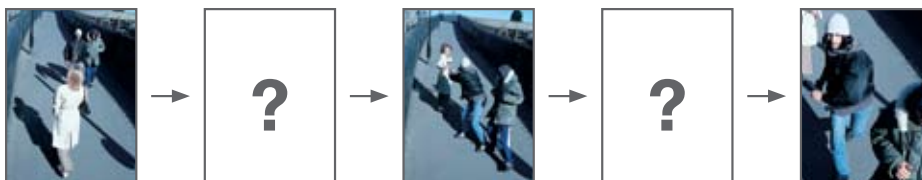
Using the H.264 standard for video compression, SAMSUNG cameras capture exceptionally crisp motion while cutting the file size by up to 50%. This means saving money on storage without sacrificing in video quality.



Full D1 Real-time Frame Rate



120 frame/sec @ D1 Resolution



Competition



SAMSUNG SECURITY | Toll Free: 888-595-2288 | Fax: 972-245-7333
This product specifications and manual are also available in pdf format at www.samsung-security.com
The information is subject to change without notice - v7.13.10

SRD-470D

SRD-470D

4CH, H.264, 120fps @ D1, DVD



Specifications

Video	Inputs	4 composite video 0.5-1 Vpp, 75 ohm automatic termination
	Resolution	704x480 NTSC
Live	Frame rate	120FPS NTSC
	Resolution	704x480 NTSC
	Multi Screen display	1/4/PIP

Performance

Operating System	Embedded	Linux
Recording	Compression	H.264
	Record Rate/NTSC	Up to 120FPS @ 704x480
		Up to 120FPS @ 704x240
		Up to 120FPS @ 352x240
	Mode/NTSC	Manual, Schedule (Continuous/Event), Event(Pre/Post), Time lapse (0.9/1.9/3.8/7.5/15/30 FPS)
	Mode/PAL	Manual, Schedule (Continuous/Event), Event(Pre/Post), Time lapse (0.8/1.6/3.1/6.2/12.5/25 FPS)
Overwrite modes	Continuous	
Pre-alarm	Up to 30 sec. (5,10,20,30 Sec)	
Post-Alarm	Up to 6 hour. (5,10,20,30 sec,1,3,5,10,20 min,1,2,3,4,5,6hour)	
Search & Playback	Search mode	Date/time, Event, Back up, Pos, Motion (*All Search Included Preview Function)
	Playback function	Fast Forward/Backward, Slow Forward/Backward, Step Forward/Backward
Network	Transmission speed	Up to (4Mbps, Unlimited(4M)/21.5/1 Mbps/800/600/500/400 /300/200/100/50 kbps
	Bandwidth control	Automatic
	Multi Stream	H.264(4CIF/CIF)
	Remote users Maximum	Search(3)/Live Unicast(10)/Live Multicast(20)
	Protocol support	TCP/IP, DHCP, PPPoE, SMTP, NTP, HTTP, DDNS, RTP, RTSP
	Monitoring	Net-I Viewer, SVM-S1, Smart viewer, Webviewer
Storage	Internal HDD	Up to 1 SATA HDD
	External HDD	USB HDD
	DVD Writer (Back-up)	YES
	USB (Back-up)	3 USB Ports
	File Format (Back-up)	AVI, MDB(DVR Play back), EXE(include Player)
Security	Password Protection	1Admin, 10 Group, 20 User per 1 Group, User can be assigned authority for function
	Data Authentication	Watermark

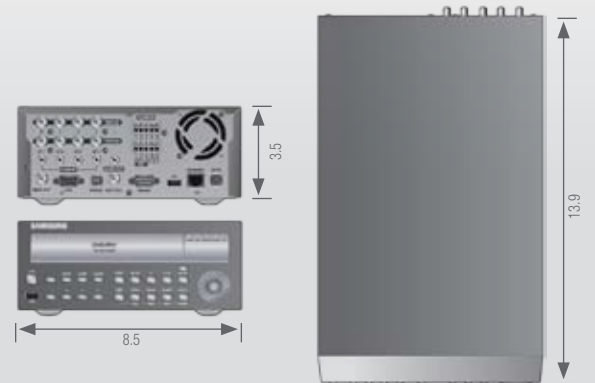
Interface

Monitors	VGA	Analog RGB 800x600, 1024x768, 1280x1024 resolution
	HDMI	N/A
	Main Composite	BNC, 1 Vp-p, 75 ohm
	Spot Composite	1BNC, 1 Vp-p, 75 ohm, support Multi screen and camera title
	Loop Outputs	4
Audio	Inputs	4 line in
	Output	1 line
	Compression	ADPCM
	Sampling rate	16KHz
Alarm	Inputs	Terminal 4 inputs, NO/NC
	Outputs	Terminal 4 relay outputs, NO/NC
	Remote notification	Notification via e-mail
Connections	Ethernet	1 RJ45 10/100/1000 Base-T
	Serial interface	RS-232
	PTZ control interface	RS-485
	PTZ Keyboard	RS-485
	USB	USB 2.0, 2 ports
	e-SATA	N/A
	Application Support	Mouse, Remote Controller
Dome Protocols	Supported PTZ cameras	Samsung-E/ Samsung-T/ Pelco-D/ Pelco-p/Panasonic/ Phillips/ AD/ DIAMOND/ ERNA/ KALATEL/ VCL TP/ICON

General

Electrical	Input Voltage	100 to 240 VAC ±10%; 50/60 Hz, Autoranging
	Power consumption	Max. 35 W (with 1x HDD)
		Max. 45W (with 2x HDD)
Environmental	Operating Temperature	+32°F to +104°F (+0°C to +40°C)
	Humidity	20%RH to 85%RH
Mechanical	Dimensions (W x H x D)	8.46 x 3.46 x 13.86 in (215 x 88 x 352 mm)
	Weight (2x hard disks)	Approx. 8.82 lb (4.0 kg)
	Rack mount kit	2 EA
Language		English, Spanish, French, German, Italian, Polish, Portuguese, Russian, Turkish, Japanese, Czech, Swedish, Danish, Korean, Chinese, Netherlands

Dimensions (unit : in) Front/Rear Panel



Certifications



SRD-470D



SAMSUNG SECURITY | Toll Free: 888-595-2288 | Fax: 972-245-7333

This product specifications and manual are also available in pdf format at www.samsung-security.com
The information is subject to change without notice - v7.13.10

Free Manuals Download Website

<http://myh66.com>

<http://usermanuals.us>

<http://www.somanuals.com>

<http://www.4manuals.cc>

<http://www.manual-lib.com>

<http://www.404manual.com>

<http://www.luxmanual.com>

<http://aubethermostatmanual.com>

Golf course search by state

<http://golfingnear.com>

Email search by domain

<http://emailbydomain.com>

Auto manuals search

<http://auto.somanuals.com>

TV manuals search

<http://tv.somanuals.com>