



DIGITAL HOME THEATER SYSTEM

HT-DB660

SAMSUNG ELECTRONICS AMERICA, INC.

SERVICE DIVISION
400 Valley Road, Suite 201
Mount Arlington, NJ 07856
1-800-SAMSUNG (1-800-726-7864)
www.samsungusa.com



Instruction Manual

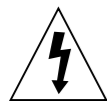


Safety Warnings

CLASS 1 LASER PRODUCT
KLASSE 1 LASER PRODUKT
LUOKAN 1 LASER LAITE
KLASS 1 LASER APPARAT
PRODUCTO LASER CLASE 1



CAUTION:
 TO REDUCE THE RISK OF ELECTRIC SHOCK, DO NOT REMOVE REAR COVER. NO USER SERVICEABLE PARTS INSIDE. REFER SERVICING TO QUALIFIED SERVICE PERSONNEL.



This symbol indicates that dangerous voltage which can cause electric shock is present inside this unit.



This symbol alerts you to important operating and maintenance instructions accompanying the unit.

WARNING: To reduce the risk of fire or electric shock, do not expose this appliance to rain or moisture.

CAUTION: TO PREVENT ELECTRIC SHOCK, MATCH WIDE BLADE OF PLUG TO WIDE SLOT, FULLY INSERT.

Note to CATV system installer :

This reminder is provided to call the CATV system installer's attention to Section 820~40 of the NEC which provides guidelines for proper grounding and, in particular, specifies that the cable ground shall be connected to the grounding system of the building, as close to the point of cable entry as practical

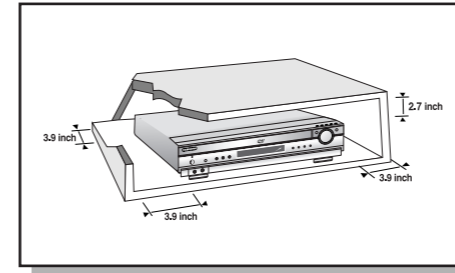
CLASS 1 LASER PRODUCT

This Compact Disc player is classified as a CLASS 1 LASER product.

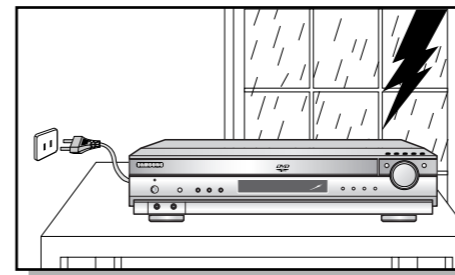
Use of controls, adjustments or performance of procedures other than those specified herein may result in hazardous radiation exposure.

CAUTION-INVISIBLE LASER RADIATION WHEN OPEN AND INTERLOCKS DEFEATED, AVOID EXPOSURE TO BEAM.

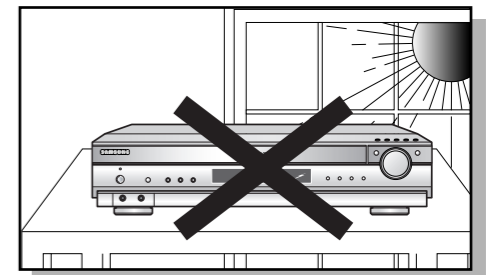
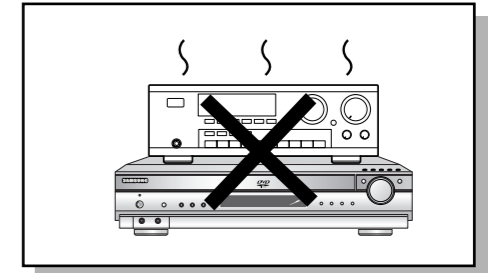
Precautions



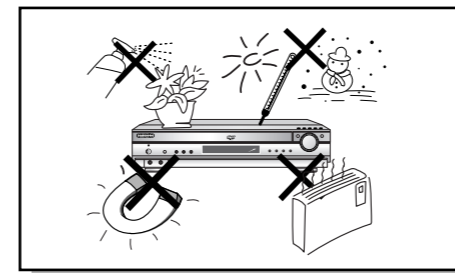
Ensure that the AC power supply in your house complies with the identification sticker located on the back of your player. Install your player horizontally, on a suitable base (furniture), with enough space around it for ventilation (3~4inches). Make sure the ventilation slots are not covered. Do not stack anything on top of the player. Do not place the player on amplifiers or other equipment which may become hot. Before moving the player, ensure the disc tray is empty. This player is designed for continuous use. Switching off the DVD player to the stand-by mode does not disconnect the electrical supply. In order to disconnect the player completely from the power supply, remove the main plug from the wall outlet, especially when left unused for a long period of time.



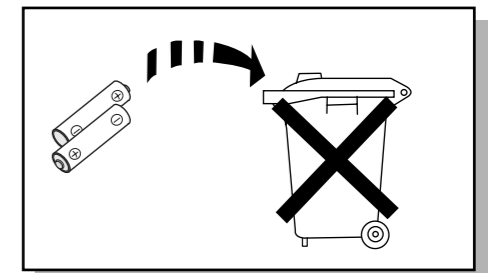
During thunderstorms, disconnect AC main plug from the wall outlet. Voltage peaks due to lightning could damage the unit.



Do not expose the unit to direct sunlight or other heat sources. This could lead to overheating and malfunction of the unit.



Protect the player from moisture(i.e. vases) , and excess heat(e.g.fireplace) or equipment creating strong magnetic or electric fields (i.e.speakers...). Disconnect the power cable from the AC supply if the player malfunctions. Your player is not intended for industrial use. Use of this product is for personal use only. Condensation may occur if your player or disc have been stored in cold temperatures. If transporting the player during the winter, wait approximately 2 hours until the unit has reached room temperature before using.



The battery used with this product contain chemicals that are harmful to the environment. Do not dispose of batteries in the general household trash.

Safety Instructions

READ INSTRUCTIONS

All the safety and operating instructions should be read before the appliance is operated.

RETAIN INSTRUCTIONS

The safety and operating instructions should be retained for future reference.

HEED WARNINGS

All warnings on the appliance and in the operating instructions should be adhered to.

FOLLOW INSTRUCTIONS

All operating and use instructions should be followed.

WATER AND MOISTURE

Do not use this video product near water-forexample, near a bathtub, wash bowl, kitchen sink, or laundry tub, in a wet basement, or near a swimming pool, and the like.

OVERLOADING

Do not overload wall outlets and extension cords as this can result in the risk of fire or electric shock.

VENTILATION

Slots and openings in the cabinet are provided for ventilation and to ensure reliable operation of the video product and to protect it from overheating these openings must not be blocked or covered.

The openings should never be blocked by placing the video product on a bed, sofa, rug, or other similar surface. This video product should never be placed near or over a radiator or heat register.

This video product should not be placed in a built-in installation such as a bookcase or rack unless proper ventilation is provided or the manufacturer's instructions have been followed.

POWER CORD PROTECTION

Power-supply cords should be routed so that they are not likely to be walked on or pinched by items placed upon or against them paying particular attention to cords at plugs, convenience receptacles, and the point where they exit from the appliance.

CLEANING

Unplug this video product from the wall outlet before cleaning. Do not use liquid cleaners or aerosol cleaners. Use a damp cloth for cleaning.

LIGHTNING

For added protection of this video product receiver during a lightning storm, or when it is left unattended and unused for long periods of time, unplug it from the wall outlet and disconnect the antenna or cable system. This will prevent damage to the video product due to lightning and power-line surges.

OBJECT AND LIQUID ENTRY

Never push objects of any kind into this product through openings as they may touch dangerous voltage points or short-out parts that could result in a fire or electric shock. Never spill liquid of any kind on the video product.

ACCESSORIES

Do not place this video product on an unstable cart, stand, tripod, bracket, or table. The video product may fall, causing serious injury to a child or adult, and serious damage to the appliance. Use only with a cart, stand, tripod, bracket, or table recommended by the manufacturer, or sold with the video product. Any mounting of the appliance should follow the manufacturer's instructions and should use a mounting accessory recommended by the manufacturer.

CART

An appliance and cart combination should be moved with care. Quick stops, excessive force, and uneven surfaces may cause the appliance and cart combination to overturn.

POWER SOURCES

This video product should be operated only from the type of power source indicated on the marking label. If you are not sure of the type of supply to your home, consult your appliance dealer or local power company. For video products intended to be operated from battery power, or other sources, refer to the operating instructions.

POWER LINES

An outside antenna system should not be located in the vicinity of overhead power lines or other electric light or power circuits, or where it can fall into such power lines or circuits. When installing an outside antenna system, extreme care should be taken to keep from touching such power lines or circuits as contact with them might be fatal.

POLARIZATION

This video product is equipped with a polarized alternating current line plug (a plug having one blade wider than the other.) This plug will fit into the power outlet only one way.

This is a safety feature. If you are unable to insert the plug fully into the outlet, try reversing the plug. If the plug should still fail to fit, contact your electrician to replace your obsolete outlet. Do not defeat the safety purpose of the polarized plug.

OUTDOOR ANTENNA GROUNDING

- If an outside antenna is connected to the antenna terminal, be sure the antenna system is grounded so as to provide some protection against voltage surges and built-up static charges.
- In the U.S.A section 810 of the National Electrical Code, ANSI/NFPA No. 70-1984, provides information with respect to proper grounding of the mast and supporting structure, grounding of the lead-in wire to an antenna discharge unit, size of grounding conductors location of antenna discharge unit, connection to grounding electrodes, and requirements for the grounding electrode. See the figure below.

ATTACHMENTS

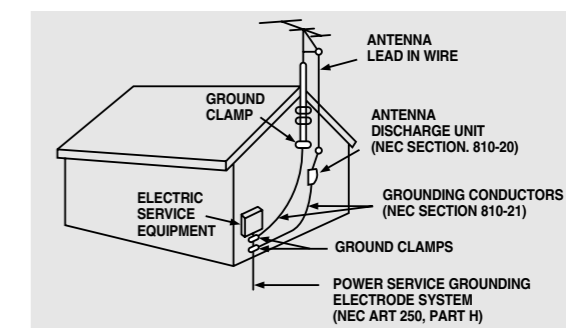
Do not use attachments not recommended by the video product manufacturer as they may cause hazards.

SERVICING

- Do not attempt to service this product yourself as opening or removing covers may expose you to dangerous voltage or other hazards.
- Refer all servicing to qualified service personnel.

REPLACEMENT PARTS

When replacement parts are required, be sure the service technician has used replacement parts specified by the manufacturer or having the same characteristics as the original part. Unauthorized substitutions may result in fire, electric shock or other hazards.



SAFETY CHECK

Upon completion of any service or repairs to this video product, ask the service technician to perform safety checks to determine that the video product is in proper operating condition.

DAMAGE REQUIRING SERVICE

- Unplug this video product from the wall outlet and refer servicing to qualified service personnel under the following conditions.
- When the power-supply cord or plug is damaged.
 - If liquid has been spilled, or objects have fallen into the video product.
 - If the video product has been exposed to rain or water
 - If the video product does not operate normally by following the operating instructions. Adjust only those controls that are covered by the operating instructions as an improper adjustment of other controls may result in damage and will often require extensive work by a qualified technician to restore the video product to its normal operation.
 - If the video product has been dropped or the cabinet has been damaged.
 - When the video product exhibits a distinct change in performance - this indicates a need for service.

HEAT

This video unit should be situated away from heat sources such as radiators, stoves, or other products (including amplifiers) that produce heat.

Features

● Multi-Disc Playback & AM/FM Tuner

The HT-DB660 combines the convenience of multi-disc playback capability, including DVD, VCD, CD, MP3-CD, CD-R, CD-RW, and DVD-RW, with a sophisticated AM/FM tuner, all in a single player.

● Built-in 5.1-Channel Amplifier

The HT-DB660 comes with a built-in 5.1-channel amplifier, allowing you to enjoy dynamic sound.

● Super Digital Sound Master

Equipped with new digital audio technology (auto sound calibration, magic sound field, and magic headphone) developed in cooperation with DiMagic Co., Ltd., you will enjoy a more spacious sound with better control.



● RRSS (Rear Reflecting Surround System)

The sound from the rear speaker is reflected against the side and rear walls before reaching the listener to produce realistic sound as if you have installed an actual 5.1-channel speaker system.

● Sound Logo

When power is turned on, a sound logo is output from speakers to notify the user that the unit is optimized for disc playback.

● TV Screen Saver Function

The HT-DB660 automatically brightens and darkens the brightness of the TV screen after 2 minutes in the stop or pause mode.

● Power Saving Function

The HT-DB660 automatically shuts itself off after 20 minutes in the stop or pause mode.

● Customized TV Screen Display

The HT-DB660 allows you to select your favorite image during JPEG, DVD, or VCD playback and set it as your background wallpaper.

● Auto Sound Calibration

By setting the auto sound calibration function just once when you relocate or install the unit, you can have the unit automatically recognize the distance between speakers, levels between channels, and frequency characteristics to create a 5.1-channel sound field optimized for the listener's environment.

Contents

● PREPARATION

| | |
|--------------------------|---|
| Safety Warnings..... | 1 |
| Precautions..... | 2 |
| Safety Instructions..... | 3 |
| Features..... | 5 |
| Notes on Discs..... | 7 |
| Description..... | 9 |

● CONNECTIONS

| | |
|--|----|
| Connecting the Speakers..... | 13 |
| Mounting the Speakers to a Wall..... | 15 |
| Connecting the Video to TV..... | 16 |
| P.SCAN(Progressive Scan) Function..... | 17 |
| Connecting the Antennas..... | 18 |
| Connecting External Components..... | 19 |
| Before Using Your DVD Player..... | 21 |

● OPERATION

| | |
|---|----|
| Disc Playback..... | 23 |
| Selecting a Disc in the Disc changer..... | 24 |
| Displaying Disc Information..... | 25 |
| Checking the Remaining Time..... | 26 |
| Fast/Slow Playback..... | 27 |
| Skipping Scenes/Songs..... | 28 |
| Repeat Playback..... | 29 |
| A-B Repeat Playback..... | 30 |
| Angle Function..... | 31 |
| Zoom Function..... | 32 |
| Selecting Audio/Subtitle Language..... | 33 |
| Moving Directly to a Scene/Song..... | 34 |
| Using Disc Menu..... | 35 |
| Using the Title Menu..... | 36 |

● SETUP

| | |
|--|----|
| Setting the Language..... | 37 |
| Setting TV Screen type..... | 39 |
| Setting Parental Controls (Rating Level)..... | 41 |
| Setting the Password..... | 43 |
| Setting the Wallpaper..... | 45 |
| Setting the Speaker Mode..... | 47 |
| Setting the Test Tone..... | 48 |
| Setting the Delay Time..... | 49 |
| Setting the Audio Quality..... | 51 |
| Setting the DRC (Dynamic Range Compression)..... | 53 |
| Dolby Pro Logic II Mode..... | 55 |
| Dolby Pro Logic II Effect..... | 56 |
| Setting the RRSS(Rear Reflecting Surround System)..... | 57 |
| Rear Reflecting Surround System..... | 59 |
| Live Surround Mode..... | 60 |
| SURR. PLUS / Virtual Headphone..... | 61 |
| SUPER 5.1..... | 62 |

● RADIO OPERATION

| | |
|--------------------------|----|
| Listening to Radio..... | 63 |
| Presetting Stations..... | 64 |

● MISCELLANEOUS

| | |
|---|----|
| Convenient Functions..... | 65 |
| Operating the TV with the Remote Control..... | 67 |
| Before Calling for Service..... | 69 |
| Cautions on Handling and Storing Discs..... | 71 |
| Specifications..... | 72 |
| Notes on Terminology..... | 73 |
| Warranty..... | 74 |

Notes on Discs



DVD (Digital Versatile Disc) offers fantastic audio and video, thanks to Dolby Digital surround sound and MPEG-2 video compression technology. Now you can enjoy these realistic effects in the home, as if you were in a movie theater or concert hall.



DVD players and the discs are coded by region. These regional codes must match in order for the disc to play. If the codes do not match, the disc will not play.

The Region Number for this player is given on the rear panel of the player. (Your DVD player will only play DVDs that are labeled with identical region codes.)

Playable Discs

| Disc Type | Mark (Logo) | Recorded Signals | Disc Size | Max. Playing Time |
|-----------|-------------|------------------|-----------|--|
| DVD | | Audio + Video | 5" | Approx. 240 min. (single-sided) Approx. 480 min. (double-sided) |
| | | | 3 1/2" | Approx. 80 min. (single-sided) Approx. 160 min. (double-sided) |
| VIDEO-CD | | Audio + Video | 5" | 74 min. |
| | | | 3 1/2" | 20 min. |
| AUDIO-CD | | Audio | 5" | 74 min. |
| | | | 3 1/2" | 20 min. |



Dolby Digital disc



DTS disc



Digital Audio disc



Stereo disc



NTSC video format
NTSC is used in all of North America, the Philippines, South Korea and Japan.



MP3 disc

Do not use the following types of disc!

- LD, CD-G, CD-I, CD-ROM and DVD-ROM cannot be played on this player. If such discs are played, a "WRONG DISC FORMAT" message appears on the TV screen.
- DVD discs purchased abroad may not play on this player. If such discs are played, a "WRONG REGION CODE" message appears on the TV screen.

Copy Protection

- Many DVD discs are encoded with copy protection. Because of this, you should only connect your DVD player directly to your TV, not to a VCR. Connecting to a VCR results in a distorted picture from copy-protected DVD discs.
- This product incorporates copyright protection technology that is protected by methods claims of certain U.S. patents and other intellectual property rights owned by Macrovision Corporation and other rights owners. Use of this copyright protection technology must be authorized by Macrovision Corporation, and is intended for home and other limited viewing uses only unless otherwise authorized by Macrovision Corporation. Reverse engineering or disassembly is prohibited.

Disc Recording Format

CD-R Discs

- Depending on the disc recording device (CD-Recorder or PC) and the condition of the disc, some CD-R discs may not be playable.
- Use a 650MB/74 minute CD-R. Avoid CD-R media, as they may not be playable.
- If possible, do not use CD-RW (Rewritable) media, as they may not be playable.
- Only the CD-Rs that are properly "closed" can be fully played. If the session is closed but the disc is left open, you may not be able to fully play the disc.

CD-R MP3 Discs

- Only CD-R discs with MP3 files in ISO 9660 or Joliet format can be played.
- MP3 file names should be 8 characters or less in length and contain no blank spaces or special characters (. / = +).
- Use discs recorded with a compression/decompression data rate greater than 128Kbps.
- Only files with the ".mp3" and ".MP3" extensions can be played.
- Only a consecutively written Multi session disc can be played. If there is a blank segment in the Multi session disc, the disc can be played only up to the blank segment.
- If the disc is not closed, it will take longer to begin playback and not all of the recorded files may be played.
- For files encoded in Variable Bit Rate (VBR) format, i.e. files encoded in both low bit rate and high bit rate (e.g., 32Kbps ~ 320Kbps), the sound may skip during playback.
- If more than 500 tracks are recorded on a single CD, a maximum of 500 tracks can be played.
- If more than 300 folders are recorded on a single CD, a maximum of 300 folders can be played.

What is MP3?

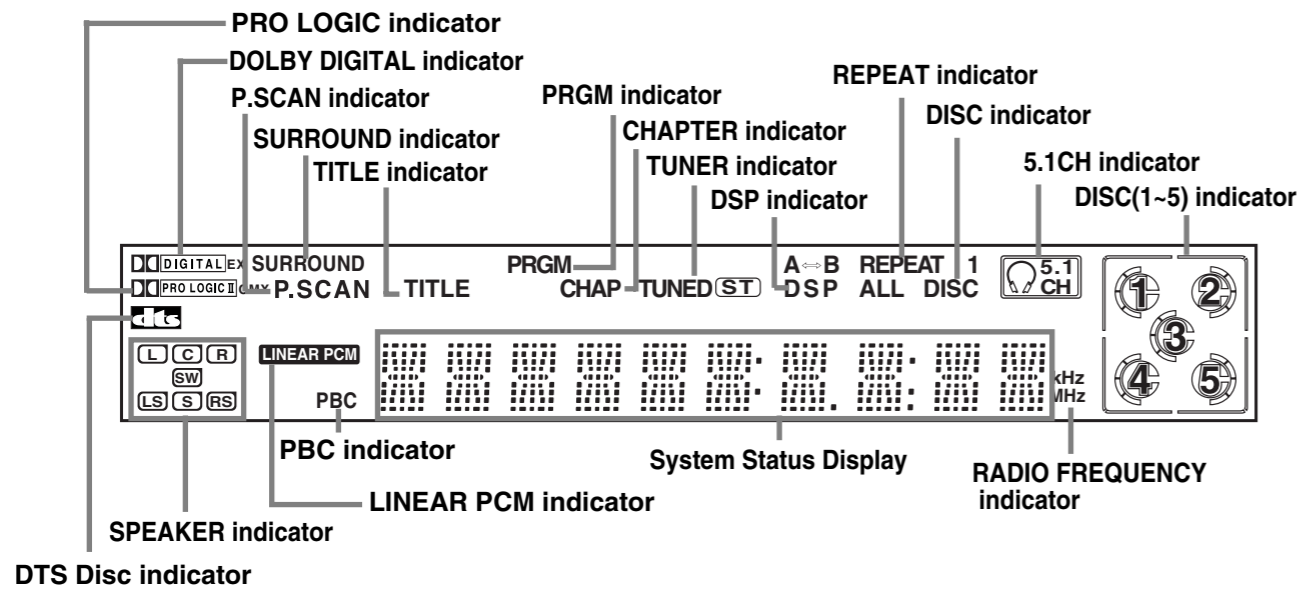
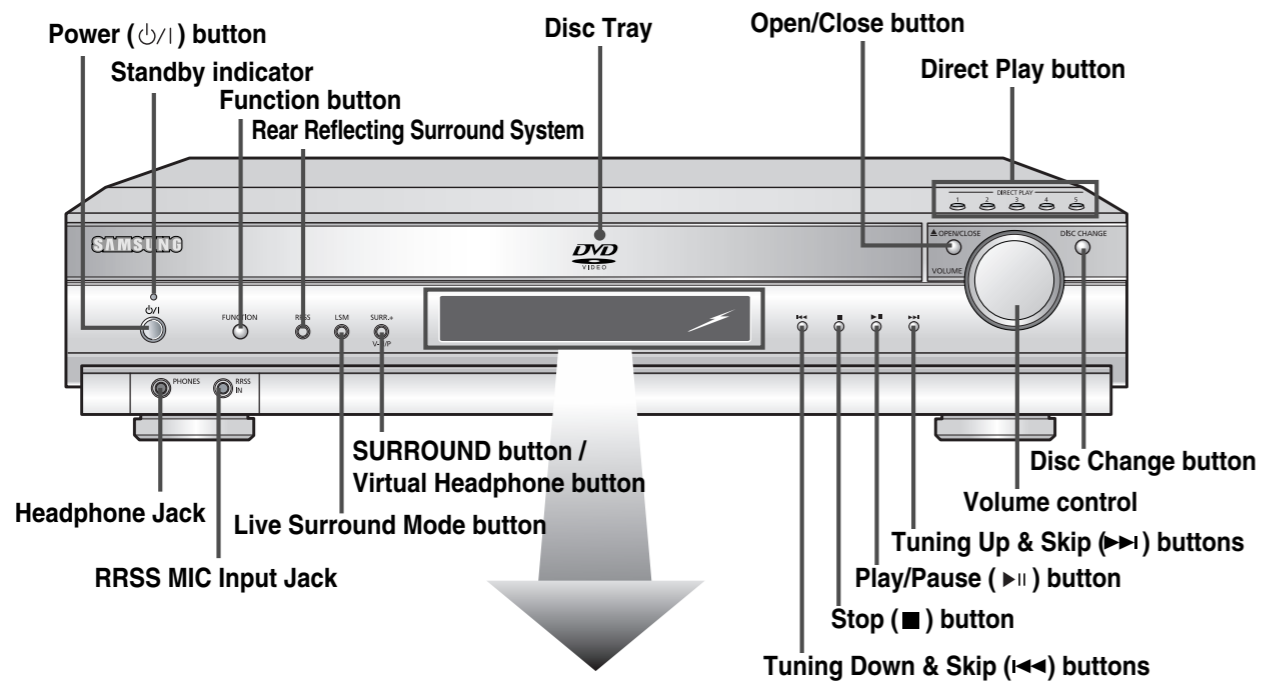
MP3 is short for MPEG-1 Audio Layer 3 and MPEG is an acronym for Moving Pictures Experts Group. MP3 is a file format with compression ratio of 1:12 (128 Kbps*) That is, you can use MP3 format to record about 12 times the usual amount of data on a regular CD.

CD-R JPEG Discs

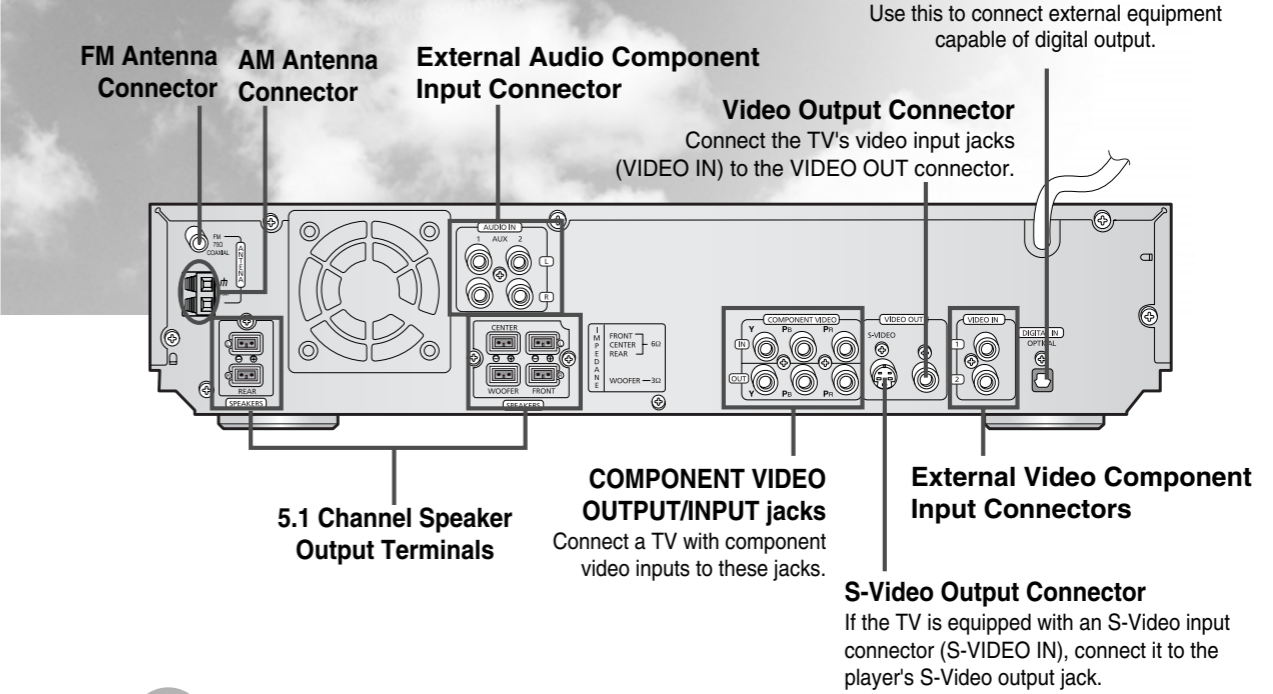
- Only files with the ".jpeg" and ".JPEG" extensions can be played.
- If the disc is not closed, it will take longer to start playing and not all of the recorded files may be played.
- Only CD-R discs with JPEG files in ISO 9660 or Joliet format can be played.
- JPEG file names should be 8 characters or less in length and contain no blank spaces or special characters (. / = +).
- Only a consecutively written multi session disc can be played. If there is a blank segment in the multi session disc, the disc can be played only up to the blank segment.
- A maximum of 9,999 images can be stored on a single CD.
- When playing a Kodak/Fuji Picture CD, only the JPEG files in the picture folder can be played.
- Picture discs other than Kodak/Fuji Picture CDs may take longer to start playing or may not play at all.

Description

—Front Panel—



—Rear Panel—

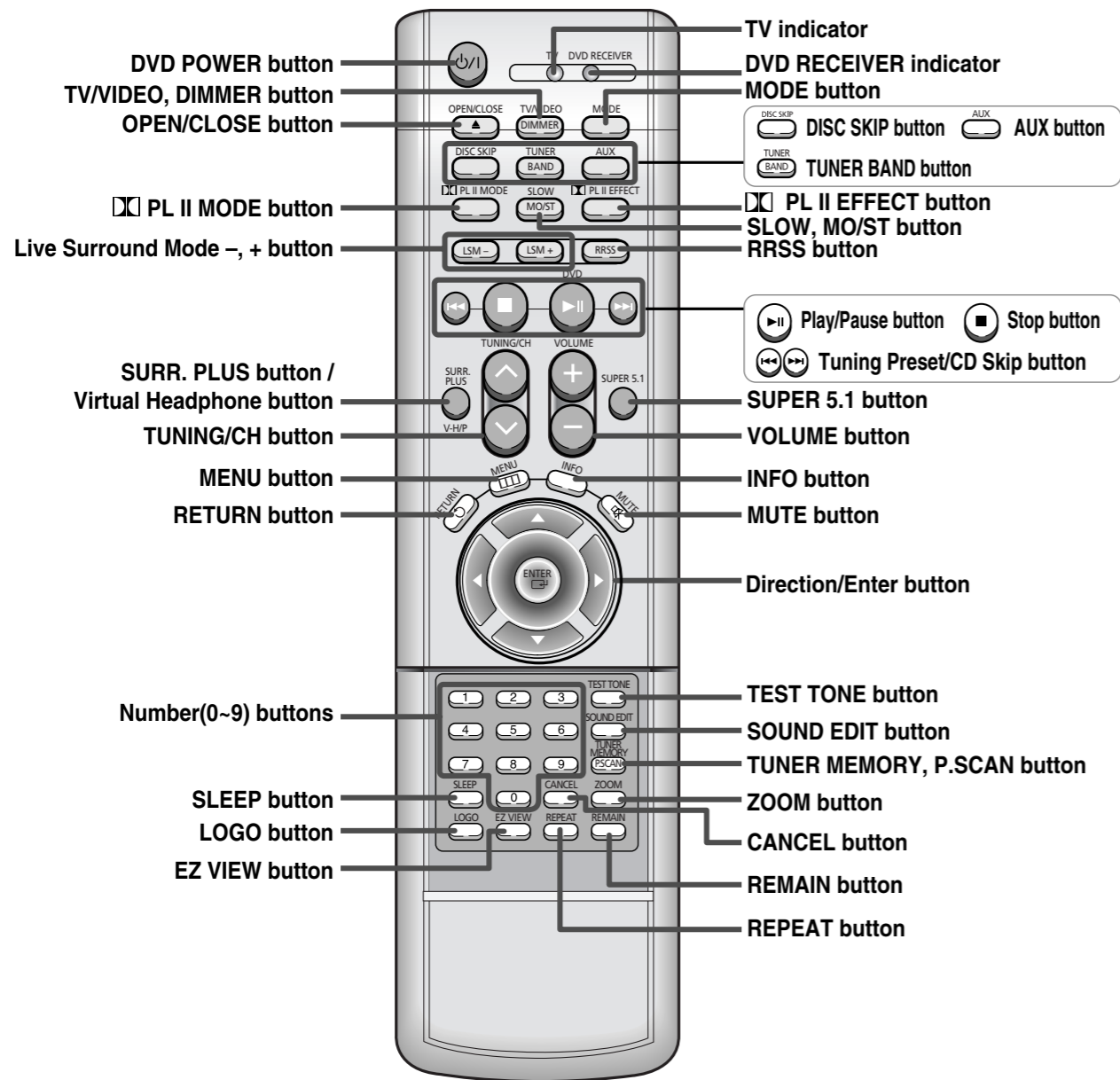


Accessories

| | | |
|-------------------------------------|--|------------------------------------|
| <p>Remote Control (AH59-01225H)</p> | <p>Audio Cable / Video Cable (AH39-40001U) / (AH39-40001V)</p> | <p>FM Antenna (AH42-00004A)</p> |
| <p>AM Antenna (AH42-20001P)</p> | <p>RRSS Microphone (AH59-01183D)</p> | <p>User's Manual (AH68-01328R)</p> |
| <p>Speaker Bracket</p> | | |

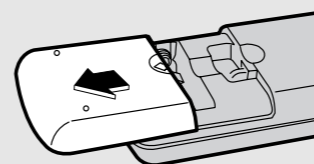
Description

—Remote Control—

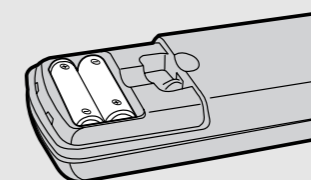


Insert Remote Batteries

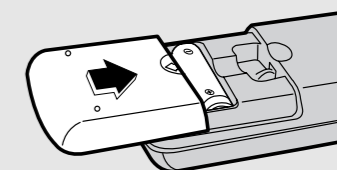
1 Remove the battery cover on the back of the remote by pressing down and sliding the cover in the direction of the arrow.



2 Insert two 1.5V AAA batteries, paying attention to the correct polarities (+ and -).



3 Replace the battery cover.



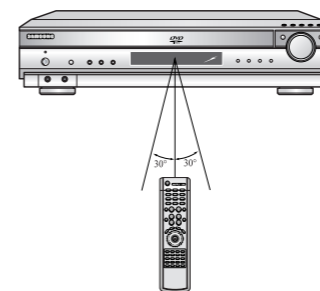
Caution

Follow these precautions to avoid leaking or cracking cells:

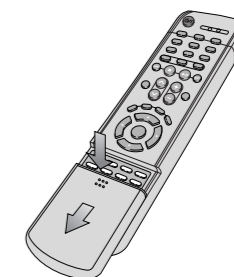
- Place batteries in the remote control so they match the polarity:(+) to (+)and (-)to (-).
- Use the correct type of batteries.Batteries that look similar may differ in voltage.
- Always replace both batteries at the same time.
- Do not expose batteries to heat or flame.

Range of Operation of the Remote Control

The remote control can be used up to approximately 23 feet/7 meters in a straight line. It can also be operated at a horizontal angle of up to 30° from the remote control sensor.

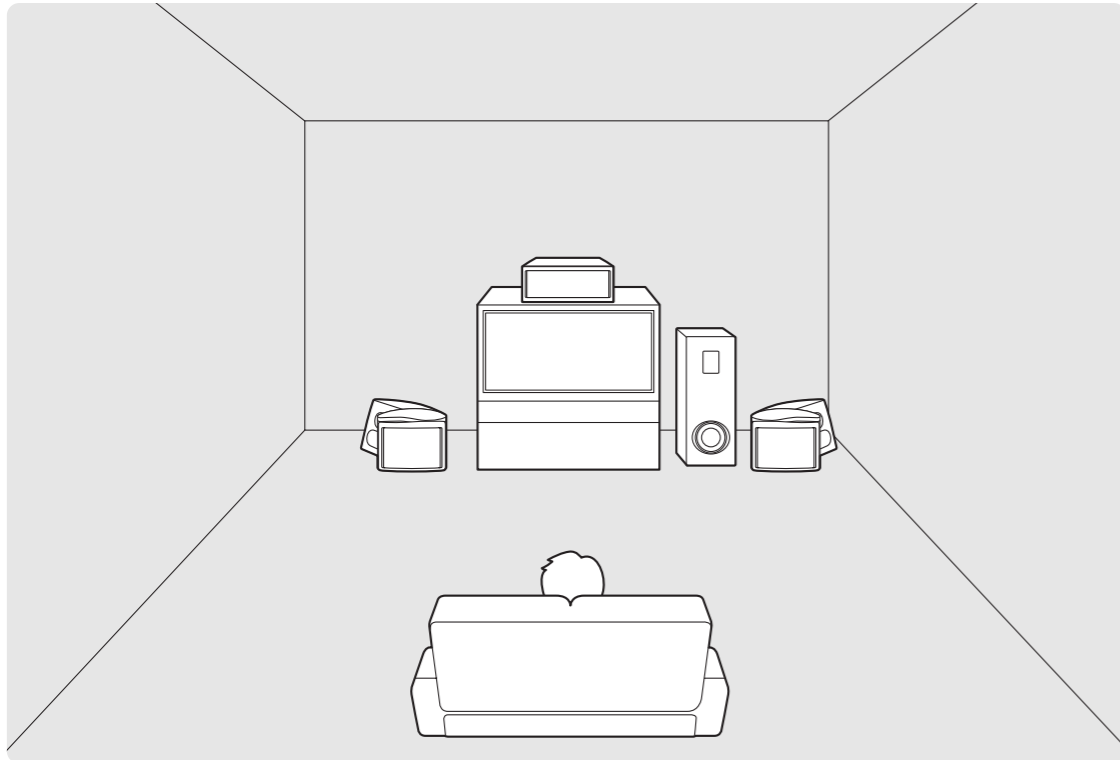


To open the remote control cover, push the top of the cover, then slide downward.



Connecting the Speakers

Before moving or installing the product, be sure to turn off the power and disconnect the power cord.



Position of the DVD Player

- Place it on a stand or cabinet shelf, or under the TV stand.

Front/Rear Speakers L R / LS RS

- Place these speakers in front of your listening position, facing inwards (about 45°) toward you.
- Place the speakers so that their tweeters will be at the same height as your ear.
- Align the front face of the front speakers with the front face of the center speaker or place them slightly in front of the center speakers.

Selecting the Listening Position

The listening position should be located about 2.5 to 3 times the distance of the TV's screen size away from the TV. Example: For 32" TVs 2~2.4m (6~8feet)
For 55" TVs 3.5~4m (11~13feet)

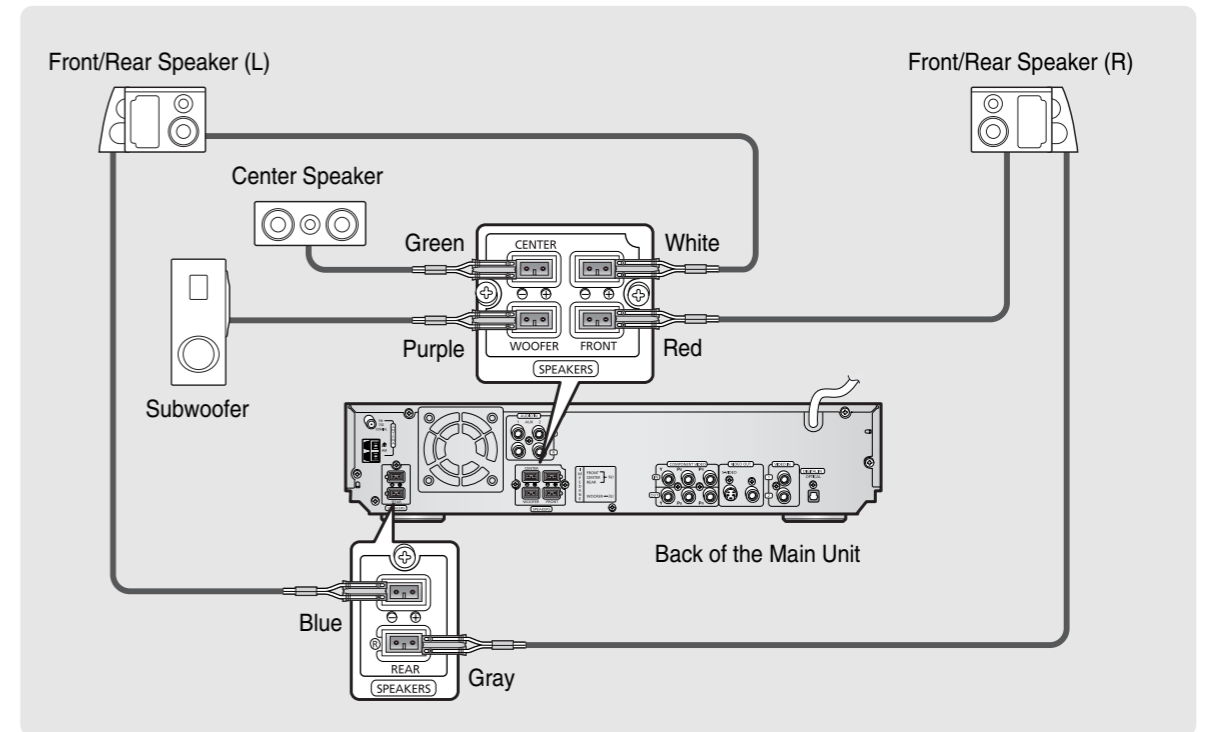
Center Speaker C

- It is best to install it at the same height as the front speakers.
- You can also install it directly over or under the TV.

Subwoofer SW

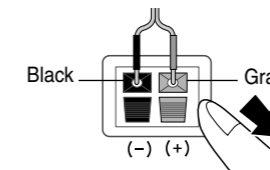
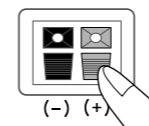
- The position of the subwoofer is not so critical. Place it anywhere you like.
- Usually, it is placed by a corner near the front speakers.

- Connect the front/rear, center, and subwoofer speakers to the speaker terminals on the back of the main unit.



Back of the Speaker

- Press down the terminal tab on the back of the speaker.
- Insert the black wire into the back terminal (-) and the gray wire into the gray (+) terminal, and then release the tab.



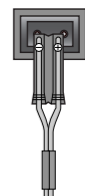
Caution

- Do not let children play with the speakers. They could get hurt if a speaker falls.
- When connecting the speaker wires to the speakers, make sure that the polarity (+/-) is correct.
- Never touch the speaker terminal while the power is on. Doing so may result in a risk of electric shock.

Back of the Main Unit

- Connect the wires to the output jacks of the same color on the back of the main unit, making sure that the polarity (+/-) is correct.

Example: Connect the center speaker's green wire to the center speaker output jack (green) on the back of the main unit.



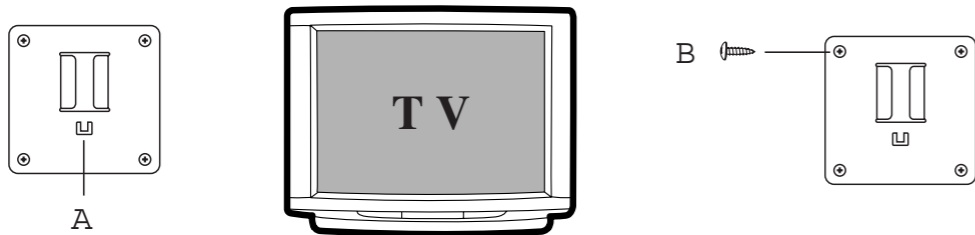
Note

- If you place a speaker near your TV set, screen color may be distorted because of the magnetic field generated by the speaker. In this case, place the speaker away from your TV set.

Mounting the Speakers to a Wall

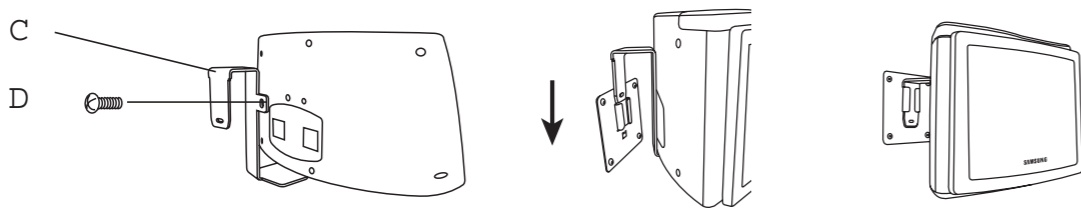
1 Attach the wall bracket holders (A) to the wall and fasten the holder screws (B) as shown in the illustration.

- For an optimal sound field, the distance between the speakers should be 40 inches, and each speaker should be at least 20 inches away from the side wall.

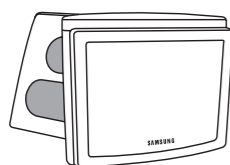


- If the wall is concrete, purchase and use anchor bolts.

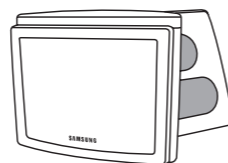
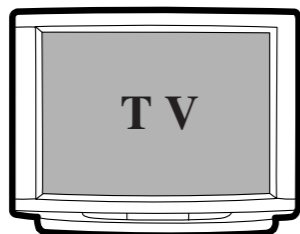
2 Check the left and right speakers, fasten the speaker to the bracket (C) using the fixing screw (D), and then insert the bracket into the holder as shown in the illustration. (Insert the speaker cords before inserting the bracket into the holder.)



3 Complete the speaker setup as shown in the illustration.

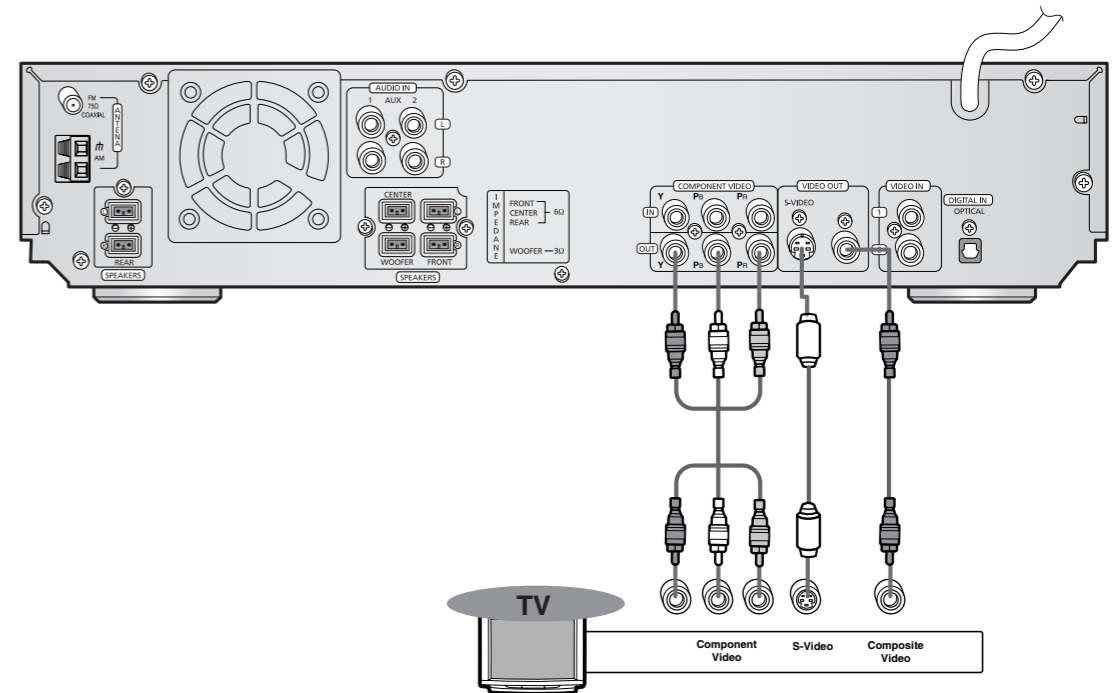


Left Speaker



Right Speaker

Connecting the Video to TV



* Depending on your TV, Component Video input connectors may be marked as DVD Video input connectors.

Composite Video (Good Quality)

Connect the supplied video cable from the VIDEO OUT jack on the back panel of the system to the VIDEO IN jack on your television.

S-Video (Better Quality)

If your television is equipped with an S-Video input, connect an S-Video cable (not supplied) from the S-VIDEO OUT jack on the back panel of the system to the S-VIDEO IN jack on your television.

Component Video (Best Quality)

If your television is equipped with Component Video inputs, connect a component video cable (not supplied) from the Pr, Pb and Y jacks on the back panel of the system to the corresponding jacks on your television.

Note

- When the Progressive scan mode is selected, the VIDEO and S-VIDEO outputs do not feed any signals. See page 17 to select Progressive Scan.

P.SCAN(Progressive Scan) Function

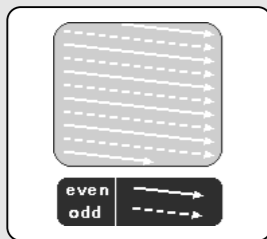
Unlike a regular Interlace Scan in which two fields of picture information are alternated to create the entire picture (odd scan lines, then even scan lines), Progressive Scan uses one field of information (all lines displayed in one pass) to create a clear and detailed picture without visible scan lines.

Hold the P.SCAN button down for longer than 1 second.

- The selection switches back and forth between "P.SCAN" and "I.SCAN" each time the button is held down for a minimum of 1 second.
- The previous mode is indicated in the display first, followed by the selected mode in about a second.

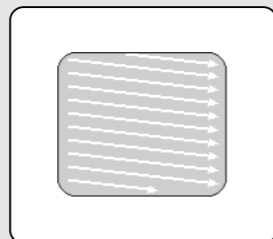
What is Progressive (or Non-Interlaced) Scanning?

Interlaced Scan (1 FRAME = 2 FIELDS)



In interlaced-scan video, a frame consists of two interlaced fields (odd and even), where each field contains every other horizontal line in the frame. The odd field of alternating lines is displayed first, and then the even field is displayed to fill in the alternating gaps left by the odd field to form a single frame. One frame, displayed every 1/30th of a second, contains two interlaced fields, thus a total of 60 fields are displayed every 1/60th of a second each. The interlaced scanning method is intended for capturing a still object.

Progressive Scan (FULL FRAME)

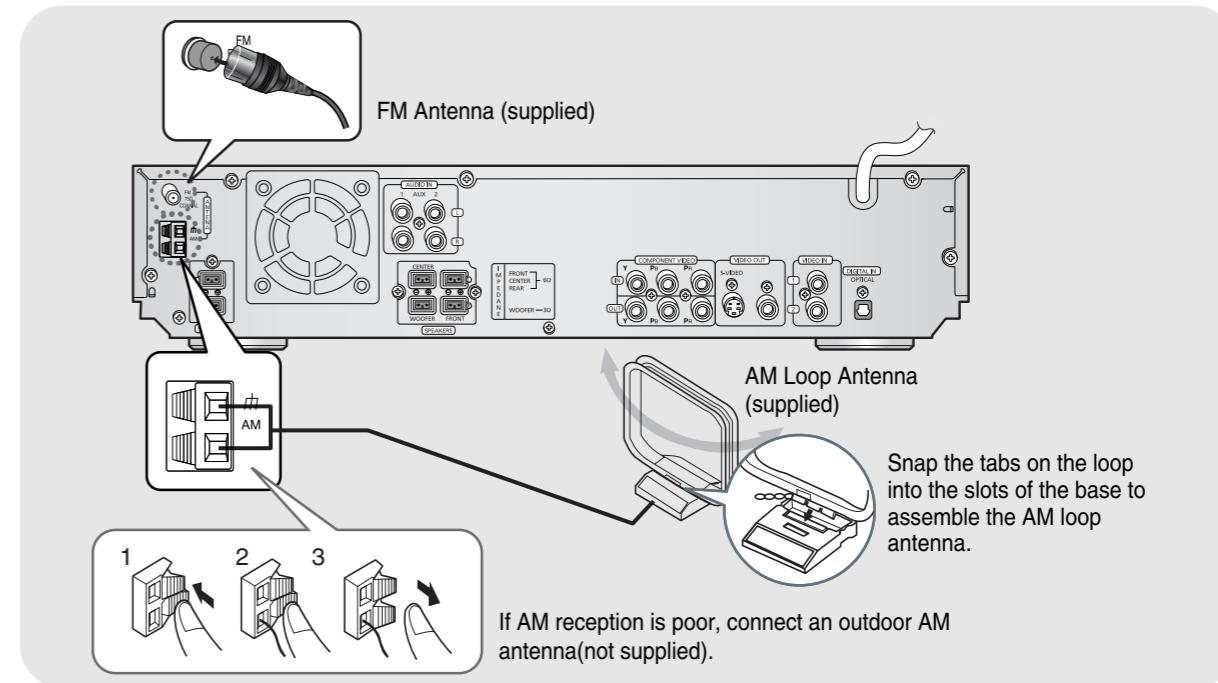


The progressive scanning method scans one full frame of video consecutively down the screen, line by line. As opposed to the interlaced scanning process by which a video image is drawn in a series of passes, you get an entire image drawn at one time. The progressive scanning method is desirable for dealing with moving objects. A camera that has the ability to capture moving objects is called a "full frame shutter camera".

Note

- This function works only on TVs equipped with component video inputs (Y, Pr, Pb) that support Progressive Video. (It does not work on TVs with conventional component inputs, i.e., non-progressive scan TVs.)
- Depending on the brand and model of your TV, this function may not work.
- This unit only outputs 480i and 480p in progressive scan mode.

Connecting the Antennas



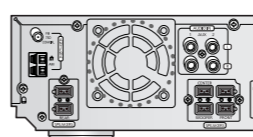
FM antenna connection

- 1 Connect the FM antenna supplied to the FM 75Ω COAXIAL terminal as a temporary measure.
- 2 Slowly move the antenna wire around until you find a location where reception is good, then fasten it to a wall or other rigid surface.

AM(MW) antenna connection

- 1 Connect the AM loop antenna supplied to the AM and # terminals.
- 2 If reception is poor, connect an outdoor single vinyl-covered wire to the AM terminal. (Keep the AM loop antenna connected).

Cooling Fan

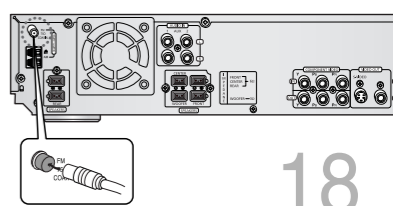


The cooling fan dissipates the heat generated inside the unit so that the unit can be operated normally. The cooling fan is activated automatically to supply cool air to the unit.

Please observe the following cautions for your safety.

- Make sure the unit is well-ventilated. If the unit has poor ventilation, the temperature inside the unit could rise and may damage it.
- Do not obstruct the cooling fan or ventilation holes. (If the cooling fan or ventilation holes are covered with a newspaper or cloth, heat may build up inside the unit and fire may result.)

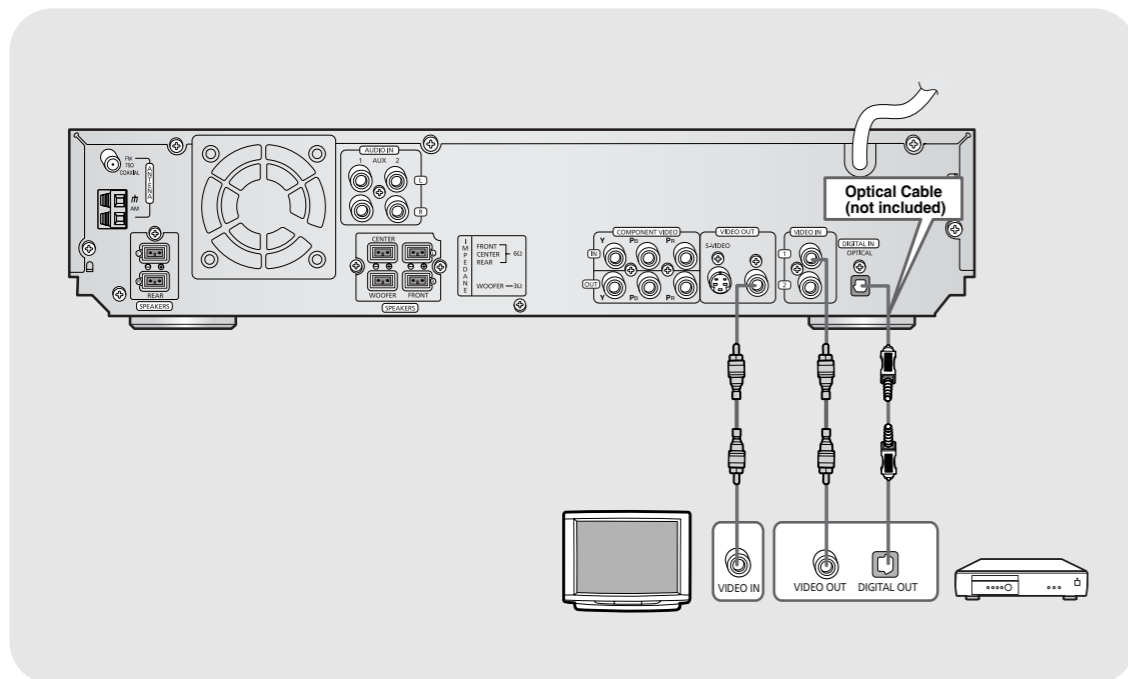
- If reception is poor, connect an outdoor antenna. Before attaching a 75Ω coaxial cable (with a standard type connector), disconnect the supplied FM antenna.



Connecting External Components

Connecting an External Digital Component

Example: Digital signal components such as a DVD or CD Recorder.

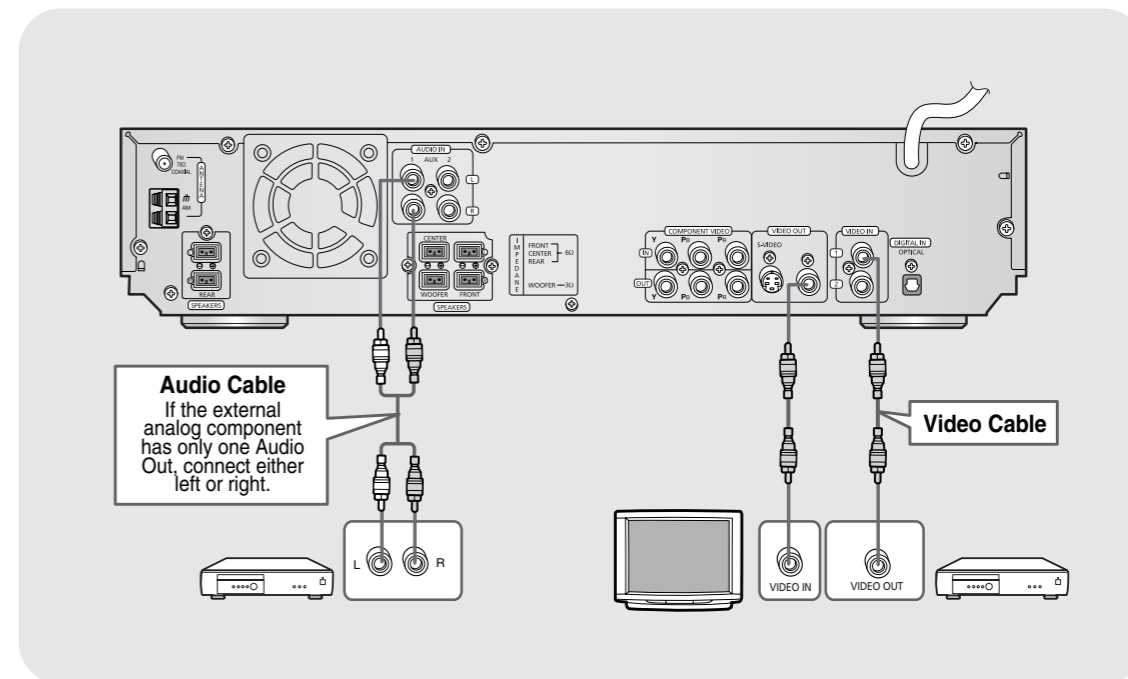


- 1 Connect Video Out on the DVD player to Video In on the TV.
- 2 Connect the Digital Input (OPTICAL) to the Digital Output on the external digital component.
- 3 Press **AUX** on the remote control to select 'DIGITAL IN'.
 - Each time the button is pressed, the selection changes as follows: DIGITAL IN → AUX 1 → AUX 2.
 - You can also use the **FUNCTION** button on the main unit.

The mode switches as follows: DVD/CD → DIGITAL IN → AUX1 → AUX2 → FM → AM.

Connecting an External Analog Component

Example: Analog signal components such as a VCR, Camcorder, and TV.



- 1 Connect Video Out on the DVD player to Video In on the TV.
- 2 Connect Video In on the DVD player to Video Out on the external analog component.
- 3 Connect Audio In on the DVD player to Audio Out on the external analog component.
 - Be sure to match connector colors.
- 4 Press **AUX** on the remote control to select AUX 1 or AUX 2.
 - Each time the button is pressed, the selection changes as follows: DIGITAL IN → AUX 1 → AUX 2.
 - You can also use the **FUNCTION** button on the main unit.

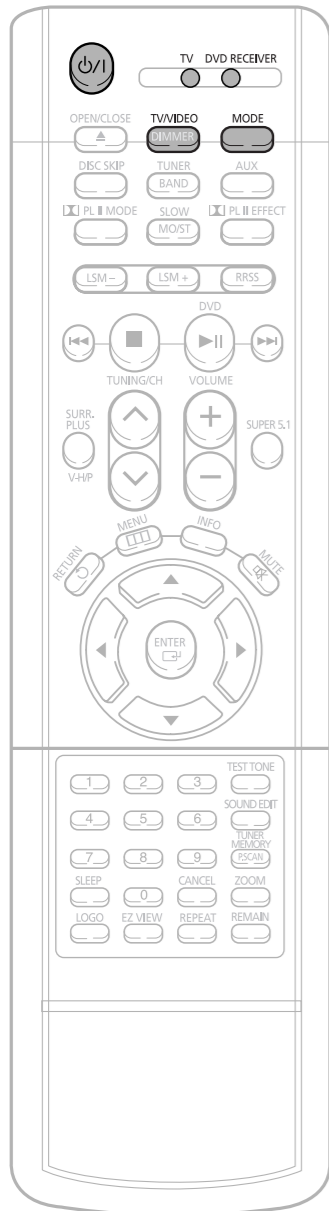
The mode switches as follows: DVD/CD → DIGITAL IN → AUX1 → AUX2 → FM → AM.

Note

- If you have connected an external digital component and Video In (1, 2) at the same time, there will be video from AUX 1 even when you select DIGITAL IN.
- If you have connected Audio In (L, R) to 1, connect Video In to 1 as well, and if you have connected Audio In (L, R) to 2, connect Video In to 2 also.

Before Using Your DVD Player

Your DVD player is capable of playing DVD, VCD, CD, MP3 and JPEG discs. Depending on the disc you are using, these instructions may vary slightly. Read the instructions carefully before using.



1 Plug the power cord into the AC power supply.

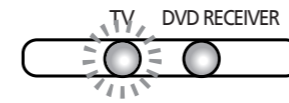
4 Press **TV/VIDEO** button to select VIDEO mode.



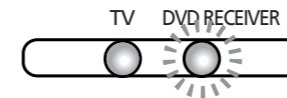
TV Broadcast System

- This device is designed to work with the NTSC video format.
- For normal playback, the video format a DVD disc is recorded in must coincide with your TV's video format.

2 Press the **MODE** button so that the TV indicator on the remote control flashes.



5 Press the **MODE** button so that the DVD RECEIVER indicator on the remote control flashes.



3 Press the **POWER** button to turn on the TV.



6 Press **FUNCTION** button on the main unit to select DVD/CD mode.

To Operate the TV and DVD Player with a Single Remote Control

Press **MODE** button.

- Each time the Mode button is pressed, the TV indicator (red) and the DVD RECEIVER indicator (green) will flash alternately.
- You can operate the TV while the TV indicator is flashing and the DVD player while the DVD indicator is flashing.
- Buttons Enabled for TV Operation: POWER, CHANNEL, VOLUME, TV/VIDEO, and Numeric (0-9) buttons.
- By default, the remote control is set to work with Samsung TVs.
See page 67 for more information on the operation of the remote control.

Disc Playback

1 Press **OPEN/CLOSE** button to open the disc tray.

2 Load one or more discs.
 • Place a disc gently into the tray with the disc's label facing up.

3 Press **DISC SKIP** button.
 • Rotate the carousel tray so you can load the third, fourth, and fifth discs.

4 Close the compartment by pressing the **OPEN/CLOSE** button again.

DVD VCD CD

- Playback starts automatically.

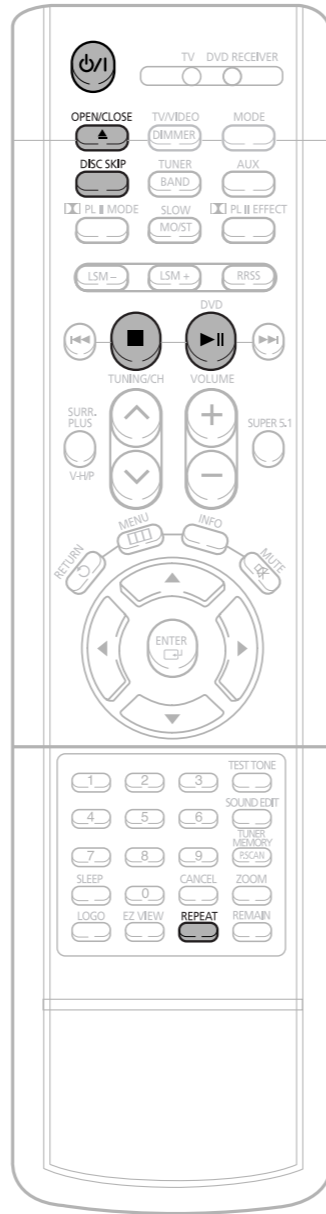
MP3 JPEG

- Playback starts automatically.
- If the TV is on, a list of MP3s on the CD will appear on the TV screen.



Note

- Depending on the content of the disc, the initial screen may appear different.
- Depending on the recording mode, some MP3-CDs cannot be played.
- Table of contents of a MP3-CD varies depending on the MP3 track format recorded on the disc.



Selecting a Disc in the Disc changer

The DVD/CD function is automatically selected when Disc Skip is pushed.

To select a specific disc, press the corresponding **DIRECT PLAY (1, 2, 3, 4, 5)** buttons on the front panel or **DISC SKIP** on the remote control, until the required disc indicator flashes.

- All the discs will be played in turn, starting with the one selected.



If you wish to play the current disc only, press **REPEAT** on the remote control one or more times, until "REPEAT : DISC" is displayed.

If the disc selected is not loaded, the next disc is played automatically.

To stop playback, press **STOP** during playback.

- If pressed once, "PRESS PLAY" is displayed and the stop position will be stored in memory. If **PLAY/PAUSE (▶II)** button or **ENTER** button is pressed, playback resumes from the stop position. (This function works only with DVDs.)
- If pressed twice, "STOP" is displayed, and if **PLAY/PAUSE (▶II)** button is pressed, playback starts from the beginning.

To temporarily pause playback, press **PLAY/PAUSE** during playback.

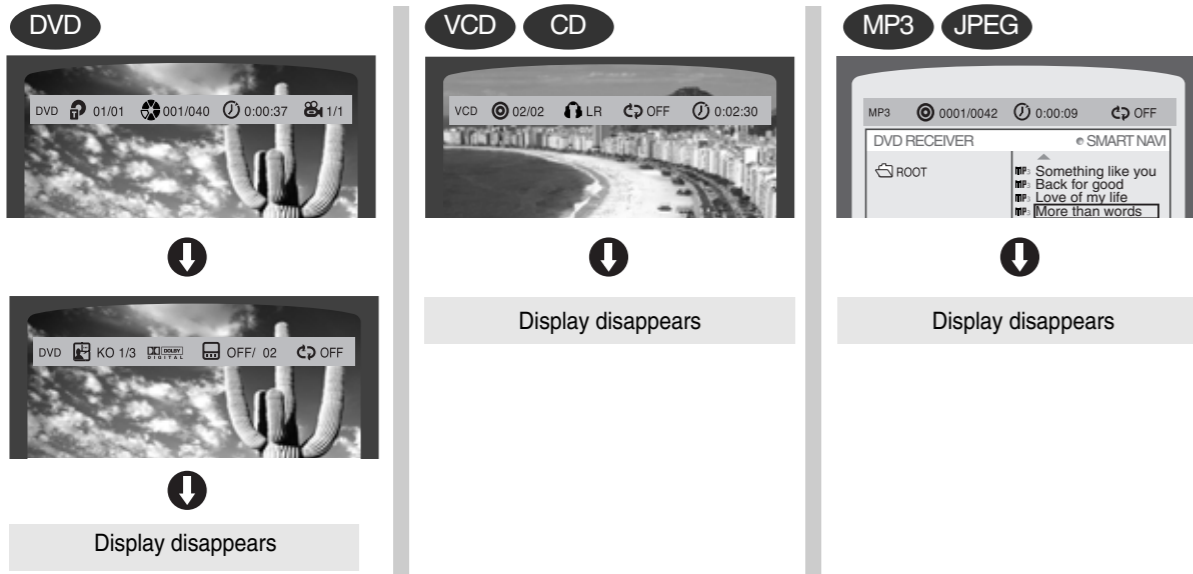
- To resume playback, press **PLAY/PAUSE** button again.

Displaying Disc Information

You can view playback information on the disc on the TV screen.

Press INFO button.

- Each time the button is pressed, the display changes as follows:

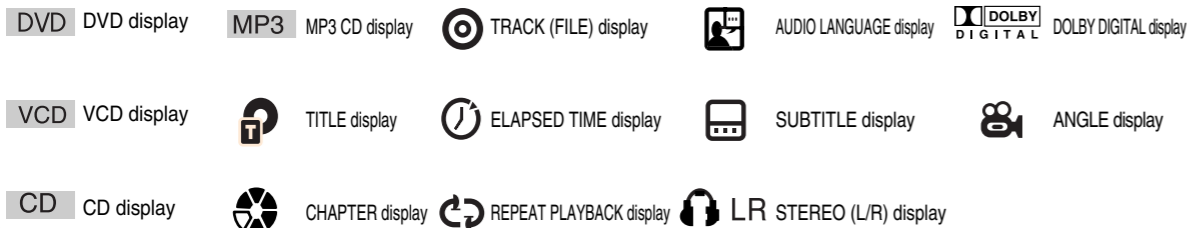


Note

- Depending on the disc, the disc information display may appear different.
- Depending on the disc, you can also select DTS, DOLBY DIGITAL, or PRO LOGIC.

- **What is a Title?**
A movie contained in a DVD disc.
- **What is a Chapter?**
Each title on a DVD disc is divided into several smaller sections called "chapters".
- **Hand icon appears on the TV screen!**
If this symbol appears on the TV screen while buttons are being operated, that operation is not possible with the disc currently being played.
- **What is a Track (File)?**
A section of video or a music file recorded on a VCD, CD, or MP3-CD.

Screen Display

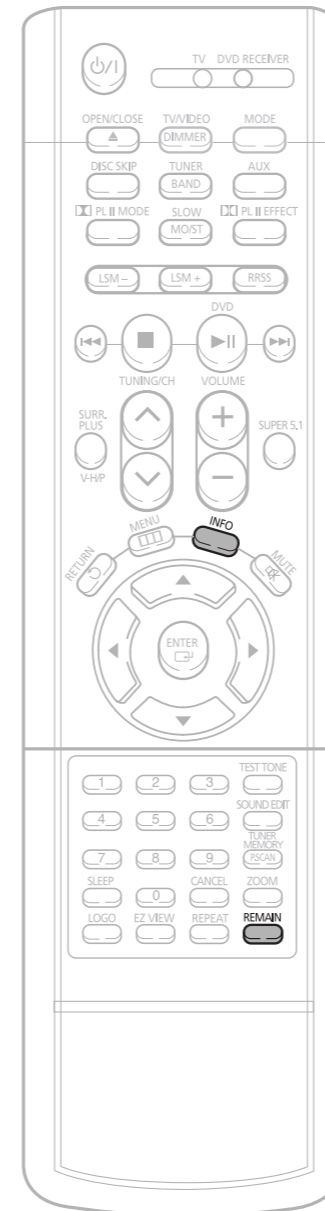
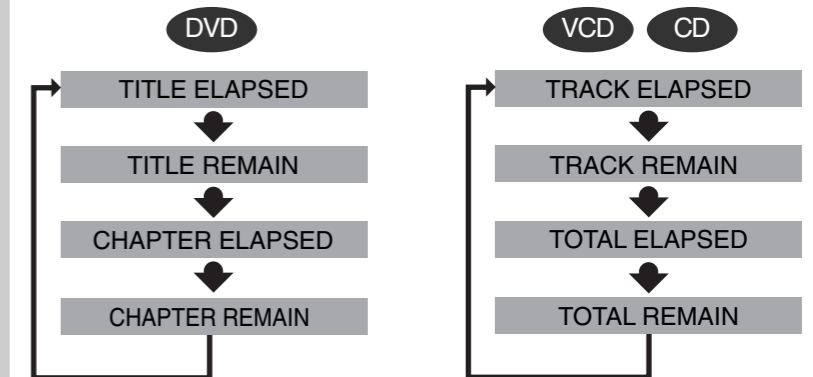


Checking the Remaining Time

Press the Remain button.

- For checking the total and remaining time of a title or chapter being played.

Each time the Remain button is pressed

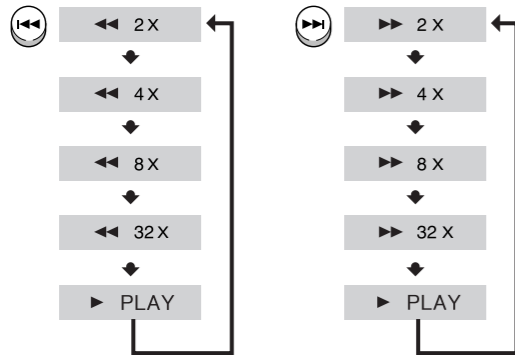


Fast/Slow Playback

Fast Playback DVD VCD CD MP3

Press and hold **I◀◀▶▶I**.

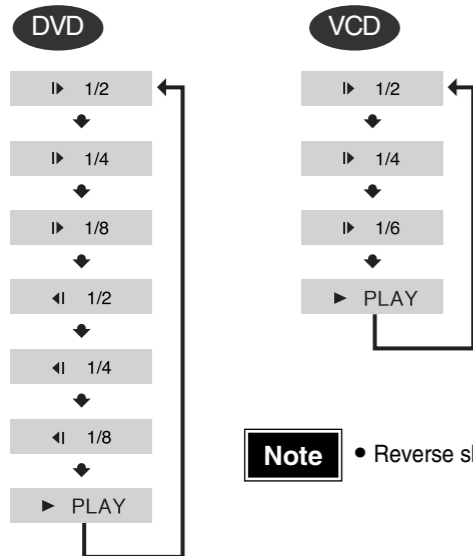
- Each time the button is held down during playback, the playback speed changes as follows:



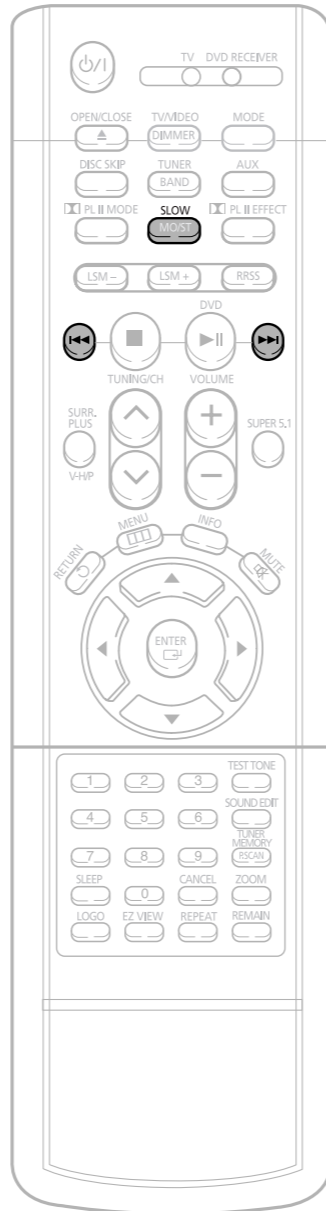
Slow Playback

Press **SLOW** button.

- Each time the button is pressed during playback, the playback speed changes as follows:



Note • Reverse slow playback does not work with VCDs.



Skipping Scenes/Songs

DVD VCD MP3

Briefly press **I◀◀▶▶I**.

- Each time the button is pressed briefly during playback, the previous or next chapter, track, or directory (file) will be played.
- But, you cannot skip chapters consecutively.



- When watching a VCD with a track longer than 15 minutes, each time **I◀◀▶▶I** is pressed, playback will skip back or forward 5 minutes.

Note

- During fast playback of a CD or MP3-CD, sound is heard only at 2x speed, and not at 4x, 8x, and 32x speeds.
- No sound is heard during slow playback and step motion playback.

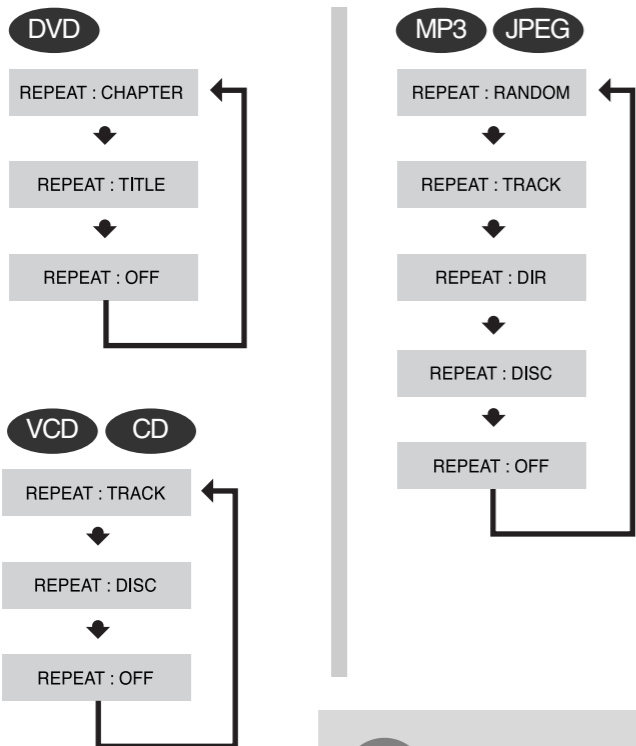
Repeat Playback

Repeat playback allows you to repeatedly play a chapter, title, track (song), or directory (MP3 file).

DVD VCD CD MP3 JPEG

Press **REPEAT** button.

- Each time the button is pressed during playback, the repeat playback mode changes as follows:



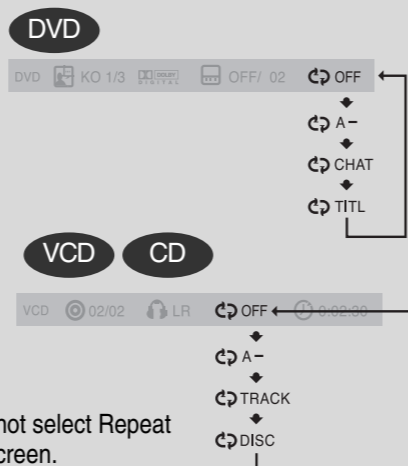
Repeat Playback Options

- CHAPTER**
Repeatedly plays the selected chapter.
- TITLE**
Repeatedly plays the selected title.
- RANDOM**
Plays tracks in random order.
(A track that has already been played may be played again.)
- TRACK**
Repeatedly plays the selected track.
- FOLDER**
Repeatedly plays all tracks in the selected folder.
- DISC**
Repeatedly plays the entire disc.
- OFF**
Cancels Repeat Playback.

To Select a Repeat Playback Mode in the Disc Information Screen

- Press **INFO** button twice.
- Press Cursor **▶** button to move to REPEAT PLAYBACK display.
- Press Cursor **▼** button to select the desired Repeat Playback mode.
- Press **ENTER** button.

* For MP3 and JPEG discs, you cannot select Repeat Play from the information display screen.



Note

- Repeat playback operation is not possible with version 2.0 VCD discs if PBC is turned on. To use Repeat Playback on a VCD with PBC, you should set the PBC to OFF in the disc menu. (See page 35.)

A-B Repeat Playback

DVD VCD CD

- Press **INFO** button twice.

- For a VCD or CD, press **INFO** button once.

DVD KO 1/3 OFF/02 OFF

- Press Cursor **▶** button to move to REPEAT PLAYBACK display.

DVD KO 1/3 OFF/02 OFF

- Press Cursor **▲**, **▼** buttons to select 'A-' and then press **ENTER** button at the beginning of the segment.

- When **ENTER** button is pressed, the selected position will be stored in memory.

DVD KO 1/3 OFF/02 A-
REPEAT: A-

- Press **ENTER** button at the end of the segment.

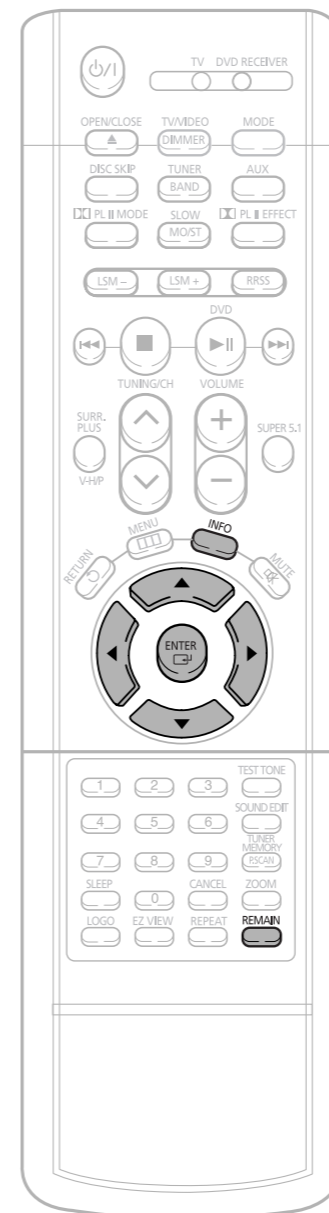
- The specified segment will be played repeatedly.

DVD KO 1/3 OFF/02 A-B
REPEAT: A-B

To return to normal playback, press Cursor **▲**, **▼** buttons to select **OFF**.

Note

- The A-B Repeat function will not work on an MP3 or JPEG disc.



Angle Function

This function allows you to view the same scene in different angles.

Zoom Function

This function allows you to enlarge a particular area of the displayed image.

DVD

1 Press **INFO** button.

2 Press Cursor **▶** button to move to **ANGLE** display.

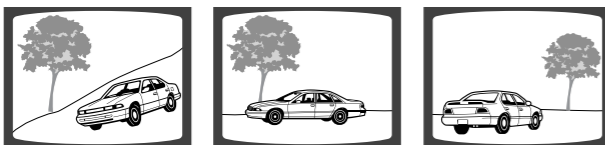
DVD 01/01 001/040 0:00:37 1/3

DVD 01/01 001/040 0:00:37 1/3

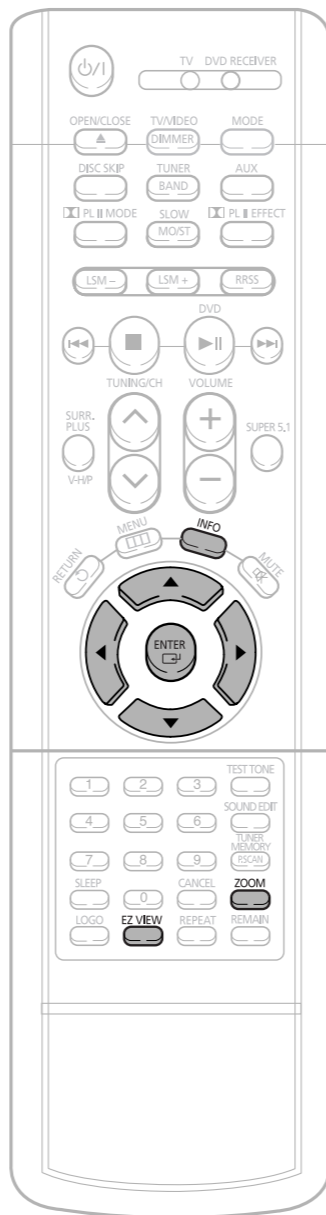
3 Press Cursor **▲, ▼** buttons or numeric buttons to select the desired angle.

• Each time the button is pressed, the angle changes as follows:

DVD 01/01 001/040 0:00:37 1/3
 2/3
 3/3



Note • The Angle function works only with discs on which multiple angles have been recorded.



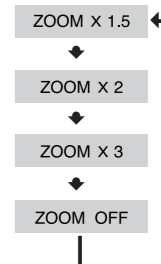
Zoom (Screen Enlarge) Function

1 Press **ZOOM** button.

2 Press Cursor **▲, ▼, ◀, ▶** buttons to move to the area you want to enlarge.

3 Press **ENTER** button.

• Each time the button is pressed, the zoom level changes as follows:

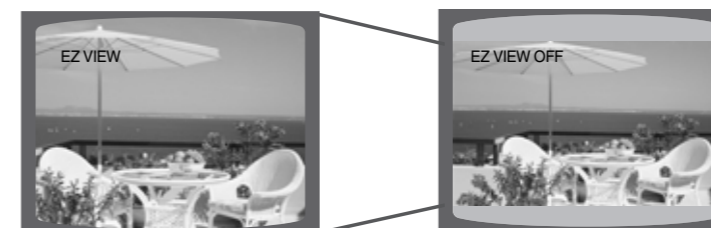


Aspect Ratio

DVD

Press **EZ VIEW** button.

• Each time the button is pressed, the zoom function will switch between On and Off.
 • When a movie is played in Widescreen format, black bars at the top and bottom of the TV screen can be removed by pressing the **EZ VIEW** button.



Note

• This function will not work if the DVD is recorded with multi-camera angle format.
 • Black bars may not disappear because some DVD discs have a built-in horizontal to vertical ratio.

OPERATION

Selecting Audio/Subtitle Language

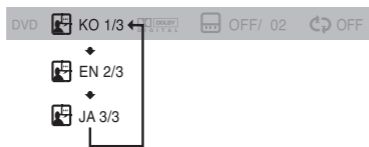
Audio Language Selection Function DVD

1 Press **INFO** button twice.



2 Press Cursor **▲**, **▼** buttons or numeric buttons to select the desired audio language.

- Depending on the number of languages on a DVD disc, a different audio language (KOREAN, ENGLISH, JAPANESE, etc.) is selected each time the button is pressed.

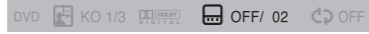


Subtitle Language Selection Function DVD

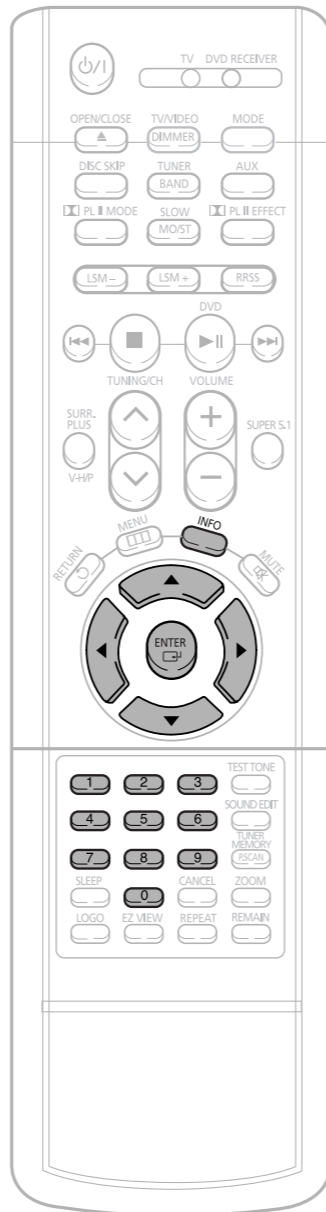
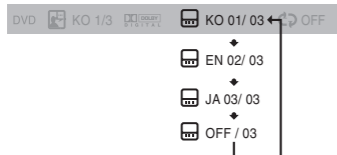
1 Press **INFO** button twice.



2 Press Cursor **▶** button to move to **SUBTITLE** display.



3 Press Cursor **▼** button or numeric buttons to select the desired subtitle.

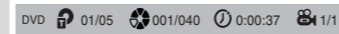


Note • Depending on the disc, the Subtitle and Audio Language functions may not work.

Moving Directly to a Scene/Song

DVD VCD CD

1 Press **INFO** button.



Moving to a Title/Track

2 Press Cursor **▲**, **▼** buttons or numeric buttons to select the desired title/track and then press **ENTER** button.



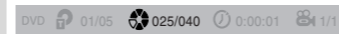
Moving to a Chapter

3 Press Cursor **◀**, **▶** buttons to move to Chapter display.



Moving to a Chapter

4 Press Cursor **▲**, **▼** buttons or numeric buttons to select the desired chapter and then press **ENTER** button.



Moving to a Specific Time

5 Press Cursor **◀**, **▶** buttons to move to time display.



Moving to a Specific Time

6 Press the numeric buttons to select the desired time and then press **ENTER** button.



MP3 JPEG

Press the **numeric** buttons.

- The selected file will be played.
- An MP3 or JPEG disc cannot be moved from the disc information screen.
- When playing an MP3 or JPG disc, you cannot use **▲**, **▼** to move a folder. To move a folder, press **■** (Stop) and then press **▲**, **▼**.



Note

- You can press **◀◀▶▶** on the remote control to move directly to the desired title, chapter, or track.
- Depending on the disc, you may not be able to move to the selected title or time.

Using Disc Menu

You can use the menus for the audio language, subtitle language, profile, etc. DVD menu contents differ from disc to disc.

Using the Title Menu

For DVDs containing multiple titles, you can view the title of each movie. Depending on the disc, this function may either not work at all or may work differently.

DVD

1 Press **MENU** button.

- When playing a VCD (version 2.), this toggles between PBC ON and OFF.



2 Press Cursor **▲, ▼** buttons to move to 'DISC MENU' and then press **ENTER** button.

- When you select the disc menu that is not supported by the disc, the "This menu is not supported" message appears on the screen.



3 Press Cursor **▲, ▼, ◀, ▶** buttons to select the desired item.



4 Press **ENTER** button.



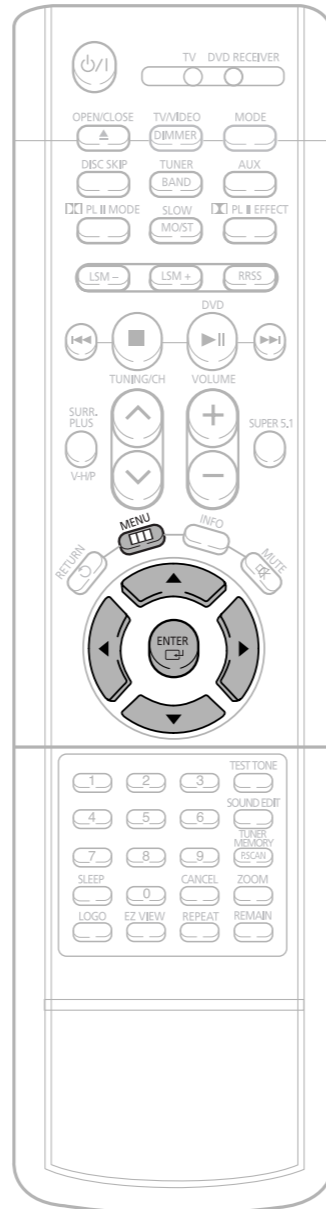
Note

PBC (Playback Control) Function

When playing a VCD (version 2.0), you can select and view various scenes according to the menu screen.

PBC ON: This VCD disc is version 2.0. The disc is played back according to the menu screen. Some functions may be disabled. When some functions are disabled, select "PBC OFF" to enable them.

PBC OFF: This VCD disc is version 1.1. The disc is played back in the same way as with a music CD.



DVD

1 Press **MENU** button.



2 Press Cursor **▲, ▼** button to move to 'Title Menu'.



3 Press **ENTER** button.

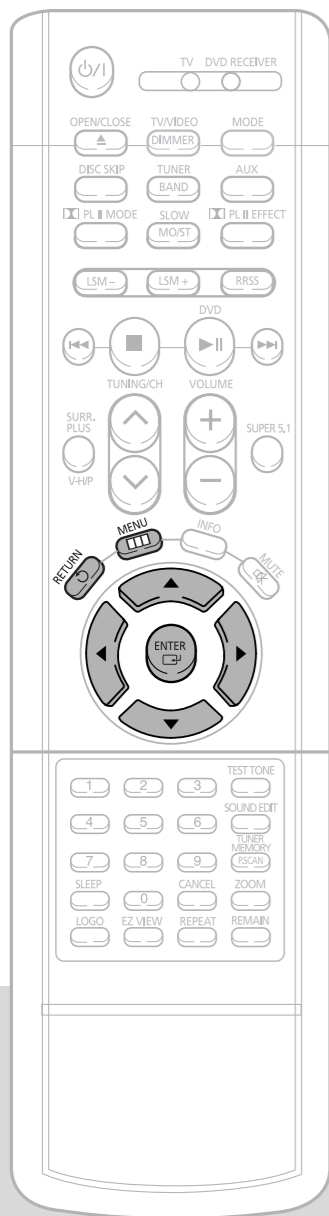
- The title menu appears.



Press **MENU** button to exit the setup screen.

Setting the Language

OSD language is set to English by default.



1 Press **MENU** button.



2 Press Cursor **▼** button to move to 'Setup' and then press **ENTER** button.



3 Press **ENTER** button.



4 Press Cursor **▲, ▼** button to select the desired item and then press **ENTER** button.



5 Press Cursor **▲, ▼** button to select the desired language and then press **ENTER** button.

- Once the setup is complete, if the language was set to English, OSD will be displayed in English.



Press **RETURN** button to return to the previous level.

Press **MENU** button to exit the setup screen.



Selecting the OSD Language



Selecting the Audio Language (recorded on the disc)



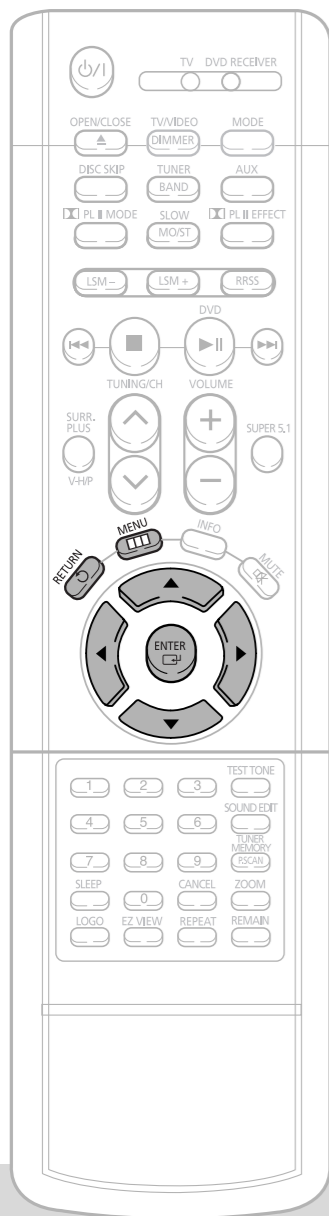
Selecting the Subtitle Language (recorded on the disc)



Selecting the Disc Menu Language (recorded on the disc)

* If the language you selected is not recorded on the disc, menu language will not change even if you set it to your desired language.

Setting TV Screen type



1 Press **MENU** button.



2 Press **Cursor** ▼ button to move to 'Setup' and then press **ENTER** button.



3 Press **Cursor** ▼ button to move to 'TV DISPLAY' and then press **ENTER** button.



4 Press **Cursor** ▲,▼ button to select the desired item and then press **ENTER** button.

- Once the setup is complete, you will be taken to the previous screen.



Adjusting the TV Aspect Ratio (Screen Size)

The horizontal to vertical screen size ratio of conventional TVs is 4:3, while that of wide screen and high definition TVs is 16:9. This ratio is called the aspect ratio. When playing DVDs recorded in different screen sizes, you should adjust the aspect ratio to fit your TV or monitor.

* For a standard TV, select either "4:3LB" or "4:3PS" option according to personal preference. Select "16:9" if you have a widescreen TV.

WIDE

: Select this to view a 16:9 picture in the full-screen mode on your widescreen TV.
•You can enjoy the widescreen aspect.



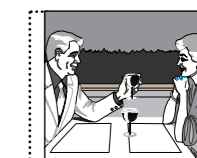
4:3LB (4:3 Letterbox)

: Select this to play a 16:9 picture in the letter box mode on a conventional TV.
•Black bars will appear at the top and bottom of the screen.



4:3PS (4:3 Pan&Scan)

: Select this to play a 16:9 picture in the pan & scan mode on a conventional TV.
•You can see the central portion of the screen only (with the sides of the 16:9 picture cut off).



Note

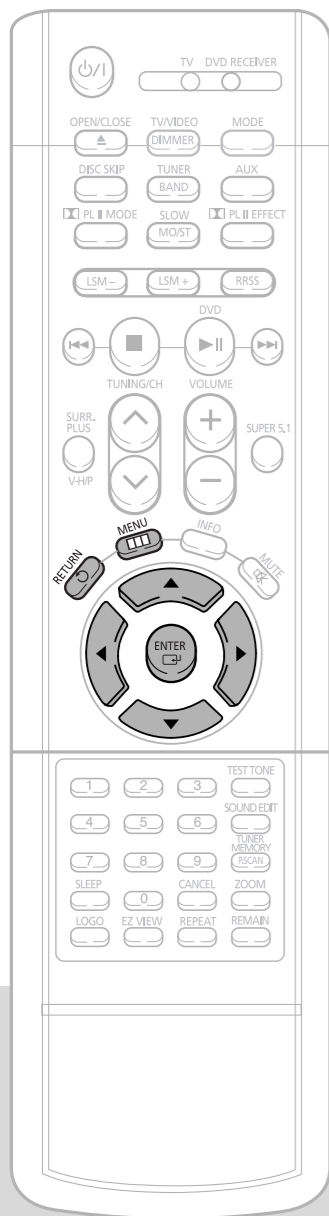
- If a DVD is in the 4:3 ratio, you cannot view it in widescreen.
- Since DVD discs are recorded in various image formats, they will look different depending on the software, the type of TV, and the TV aspect ratio setting.

Press **RETURN** button to return to the previous level.

Press **MENU** button to exit the setup screen.

Setting Parental Controls (Rating Level)

Use this to restrict playback of adult or violent DVDs you do not want children to view.



1 Press **MENU** button.



2 Press Cursor **▼** button to move to 'Setup' and then press **ENTER** button.



3 Press Cursor **▼** button to move to 'PARENTAL' and then press **ENTER** button.



4 Press Cursor **▲, ▼** buttons to select the desired rating level and then press **ENTER** button.



5 Enter the password and then press **ENTER** button.



- If you have selected Level 6, you cannot view DVDs with Level 7 or higher.
- The higher the level, the closer the content is to violent or adult material.
- The password is set to "7890" by default.
- Once the setup is complete, you will be taken to the previous screen.

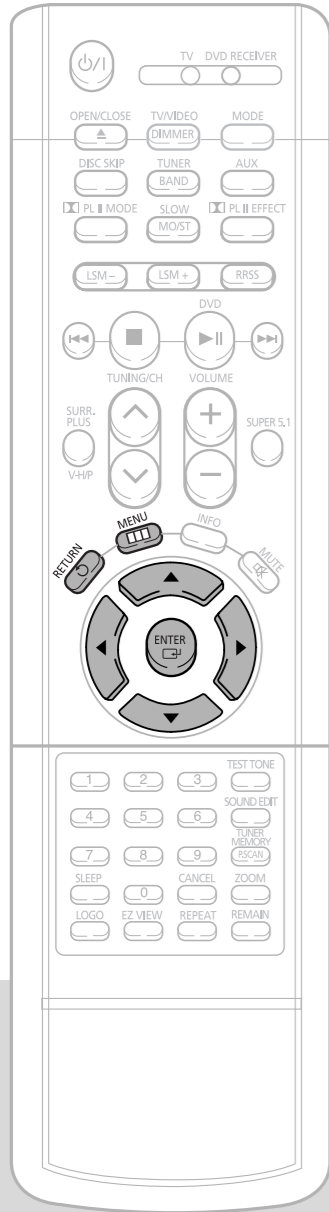
Note • This function works only if a DVD disc contains rating level information.

Press **RETURN** button to return to the previous level.

Press **MENU** button to exit the setup screen.

Setting the Password

You can set the password for the Parental (rating level) setting.



1 Press **MENU** button.



2 Press Cursor **▼** button to move to 'Setup' and then press **ENTER** button.



3 Press Cursor **▼** button to move to 'PASSWORD' and then press **ENTER** button.



4 Press **ENTER** button.



5 Enter the password and then press **ENTER** button.

- Enter the old password, a new password, and confirm new password.
- The setting is complete.



Press **RETURN** button to return to the previous level.

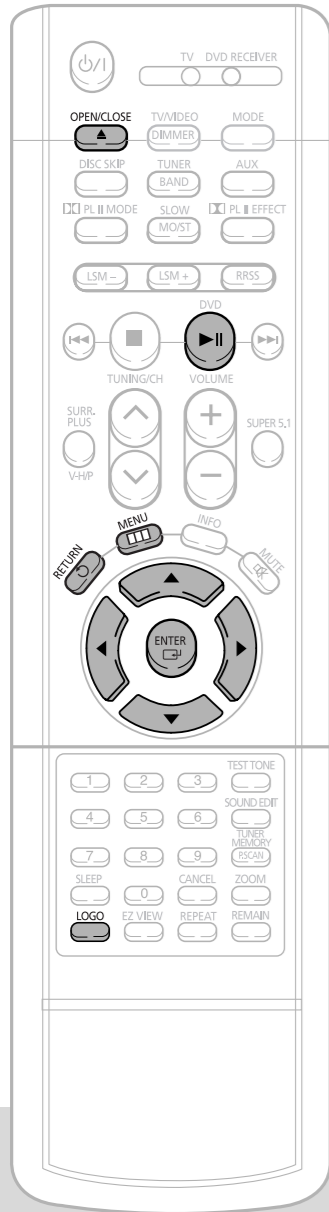
Press **MENU** button to exit the setup screen.

SETUP

Setting the Wallpaper

JPEG DVD VCD

While watching a DVD, VCD, or JPEG CD, you can set an image you like as background wallpaper.



1 During playback, press **PLAY/PAUSE** button when the image you like comes up.



2 Press **LOGO** button.

• "LOGO COPYING" will be displayed on the TV screen followed by "LOGO COPIED".



3 Press **MENU** button.



4 Press **Cursor** ▼ button to move to 'Setup' and then press **ENTER** button.



5 Press **Cursor** ▼ button to move to 'LOGO' and then press **ENTER** button.



6 Press **Cursor** ▼ button to move to 'USER' and then press **ENTER** button.



7 Press **MENU** button to exit the setup screen.

8 Press **OPEN/CLOSE** button to open and then close the disc tray.

Press **RETURN** button to return to the previous level.

Press **MENU** button to exit the setup screen.

SETUP



Select this to set the Samsung Logo image as your wallpaper.

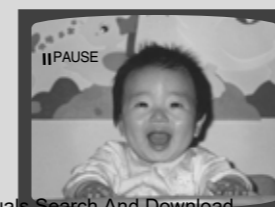


Select this to set the desired image as your wallpaper.

To Change the Wallpaper

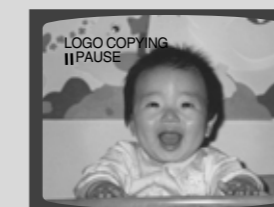
JPEG DVD VCD

1 During playback, press **PLAY/PAUSE** button when you see an image you like.



2 Press **LOGO** button.

• "LOGO COPYING" will be displayed on the TV screen followed by "LOGO COPIED".



3 Press **OPEN/CLOSE** button to open and then close the disc tray.

• The wallpaper is changed.

Setting the Speaker Mode

1 Press **MENU** button.



2 Press **Cursor** ▼ button to move to 'Audio' and then press **ENTER** button.



3 In the Speaker Setup, press the **ENTER** button again.



4 Press **Cursor** ▲, ▼, ◀, ▶ buttons to move to the desired speaker and then press **ENTER** button.

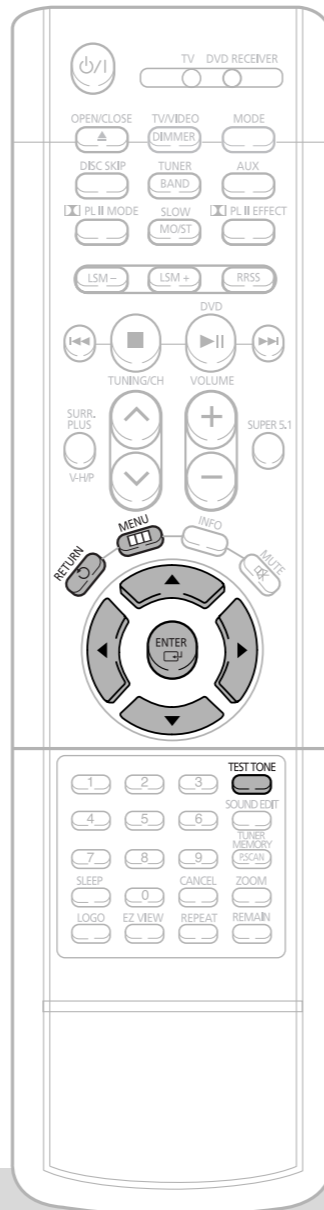


- For C, LS, and RS, each time the button is pressed, the mode switches alternately as follows: SMALL → NONE.
- For L and R, the mode is set to SMALL.

SMALL : Select this when using the speakers.
NONE : Select this when no speakers are installed.

Note

- With **Dolby Pro Logic II**, the delay time may be different for each mode.
- With **AC-3** and **DTS**, the delay time is set between 00 and 15mSEC.
- Depending on **PRO LOGIC** and **STEREO**, the speaker mode may vary.



Setting the Test Tone

1 Press **MENU** button.



2 Press **Cursor** ▼ button to move to 'Audio' and then press **ENTER** button.



3 Press **Cursor** ▼ button to move to 'TEST TONE' and then press **ENTER** button.

- The test tone will be sent to L → C → R → RS → LS → SW in that order. If the button is pressed again at this time, the test tone will stop.



Press **RETURN** button to return to the previous level.

Press **MENU** button to exit the setup screen.

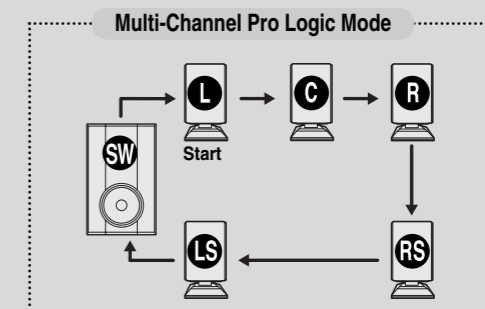
When manually testing using the TEST TONE button

Press **TEST TONE** button.

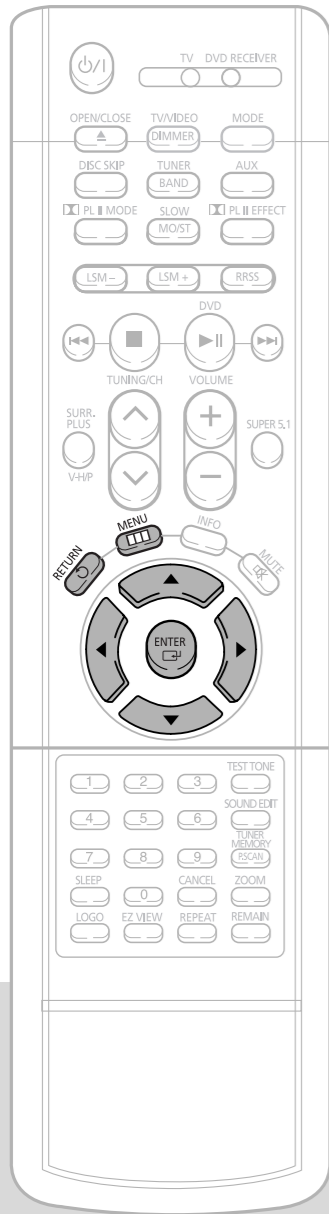
- Test tone will be produced as follows: When playing a DVD or CD, this will work only in Stop mode.
- Use this function to check that each speaker is correctly connected and that there is no problem.

To end the test tone, press **TEST TONE** button.

L: Front Speaker (L) C: Center Speaker SW: Subwoofer
 R: Front Speaker (R) LS: Rear Speaker (L) RS: Rear Speaker (R)



Setting the Delay Time



1 Press **MENU** button.



2 Press Cursor **▼** button to move to 'Audio' and then press **ENTER** button.



3 Press Cursor **▼** button to move to 'DELAY TIME' and then press **ENTER** button.



4 Press Cursor **▲, ▼, ◀, ▶** buttons to move to the desired speaker and then press **ENTER** button.



5 Press Cursor **▲, ▼** to set the Delay time

- You can set the delay time for C between 00 and 05mSEC and for LS and RS between 00 and 15mSEC.



Setting up the Speaker Delay Time

When 5.1CH Surround Sound is played, you can enjoy the best sound if the distance between you and each speaker is the same. Since the sounds arrive at the listening position at different times depending on the placement of speakers, you can adjust this difference by adding a delay effect to the sound of the Center and Surround Speakers.

• Setting CENTER SPEAKER

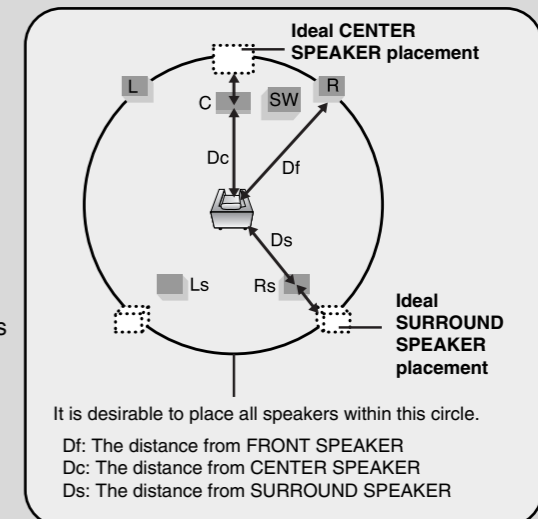
If the distance of Dc is equal to or longer than the distance of Df in the figure, set the mode as 0ms. Otherwise, change the setting according to the table.

| Distance between Df and Dc | Delay Time |
|----------------------------|------------|
| 20 Inches | 1.3 ms |
| 40 Inches | 2.6 ms |
| 5 feet | 3.9 ms |
| 6 feet 6.6 inches | 5.3 ms |

• Setting REAR (SURROUND) SPEAKERS

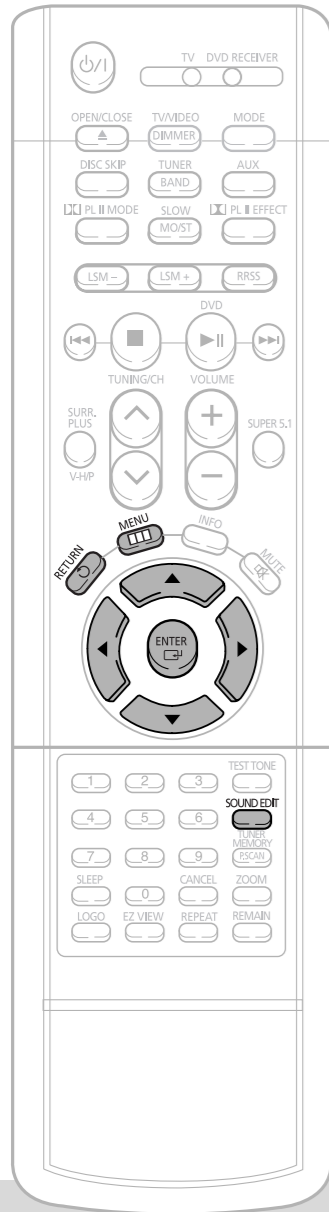
If the distance of Df is equal to the distance of Ds in the figure, set the mode as 0ms. Otherwise, change the setting according to the table.

| Distance between Ds and Dc | Delay Time |
|----------------------------|------------|
| 6 feet 6.6 inches | 5.3 ms |
| 13 feet 3.3 inches | 10.6 ms |
| 20 feet | 15.9 ms |



Setting the Audio Quality

You can adjust the balance and level for each speaker.



Method 1 When adjusting the audio quality using the setup screen

1 Press **MENU** button.



2 Press Cursor **▼** button to move to 'Audio' and then press **ENTER** button.



3 Press Cursor **▼** button to move to 'SOUND EDIT' and then press **ENTER** button.



4 Press Cursor **▲, ▼, ◀, ▶** buttons to select and adjust the desired item and then press **ENTER** button.



Method 2 When manually adjusting with the SOUND EDIT button

Adjusting Front Speaker Balance

1 Press **SOUND EDIT** button and then press Cursor **◀, ▶**.



Adjusting Rear Speaker Balance

2 Press **SOUND EDIT** button and then press Cursor **◀, ▶**.



Adjusting Center Speaker Level

3 Press **SOUND EDIT** button and then press Cursor **◀, ▶**.



Adjusting Rear Speaker Level

4 Press **SOUND EDIT** button and then press Cursor **◀, ▶**.



Adjusting Subwoofer Speaker Level

5 Press **SOUND EDIT** button and then press Cursor **◀, ▶**.



Press **RETURN** button to return to the previous level.

Press **MENU** button to exit the setup screen.

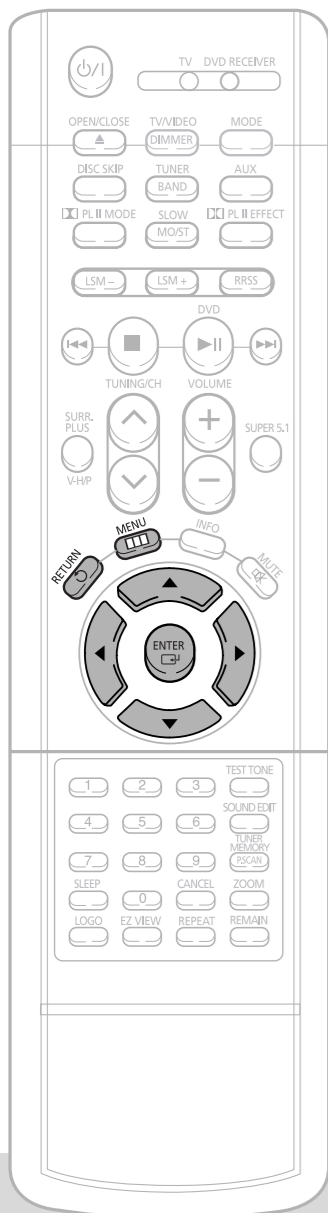
Note

- Adjusting Front/Rear Speaker Balance**
- You can select between 00 and -06 and OFF.
 - The volume decreases as you move closer to -6.

- Adjusting Center/Rear/Subwoofer Speaker Level**
- The volume level can be adjusted in steps from +6dB to -6dB.
 - The sound gets louder as you move closer to +6dB and smaller as you get closer to -6dB.

Setting the DRC (Dynamic Range Compression)

You can use this function to enjoy Dolby Digital sound when watching movies at low volume at night.



1 Press **MENU** button.



2 Press Cursor **▼** button to move to 'Audio' and then press **ENTER** button.



3 Press Cursor **▼** button to move to 'DRC' and then press **ENTER** button.



4 Press Cursor **▲, ▼** to adjust the 'DRC'.

- The longer the Cursor **▲** button is held down, the greater the effect, and the longer Cursor **▼** button is held down, the smaller the effect.



Press **RETURN** button to return to the previous level.

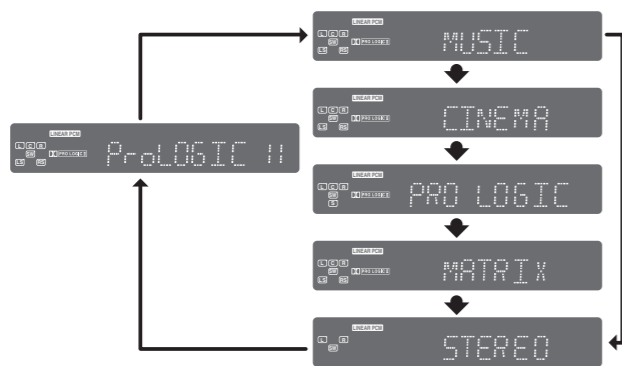
Press **MENU** button to exit the setup screen.

Dolby Pro Logic II Mode

You can select the desired Dolby Pro Logic II audio mode.

Press **PL II MODE** button.

- Each time the button is pressed, the mode changes as follows.



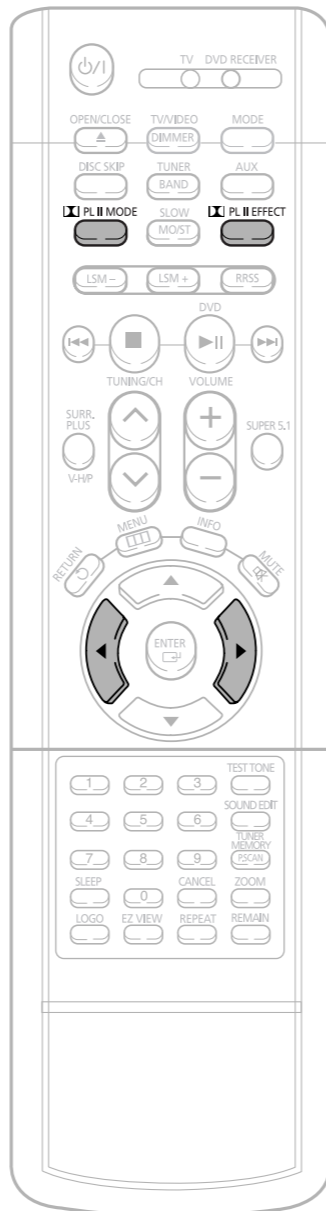
Note

- When selecting Pro Logic II mode, connect your external device to the AUDIO INPUT jacks (L and R) on the player. If you connect to only one of the inputs (L or R), you cannot listen to 5.1 channel surround sound.

PRO LOGIC II

- **MUSIC:** When listening to music, you can experience sound effects as if you are listening to the actual performance.
- **CINEMA:** Adds realism to the movie soundtrack.
- **PRO LOGIC:** You will experience a realistic multi-channel effect, as if using five speakers, while using just the front left and right speakers.
- **MATRIX:** You will hear 5.1 channel surround sound.

STEREO: Select this to listen to sounds from the front left and right speakers and the subwoofer only.



Dolby Pro Logic II Effect

This function works only in Dolby Pro Logic MUSIC mode.

1 Press **PL II MODE** button to select 'MUSIC' mode.



2 Press **PL II EFFECT** button and then press Cursor **◀**, **▶** buttons to select the mode.

- You can select either 0 or 1.



3 Press **PL II EFFECT** button and then press Cursor **◀**, **▶** buttons to select the mode.

- You can select between 0 and 7.



4 Press **PL II EFFECT** button and then press Cursor **◀**, **▶** buttons to select the mode.

- You can select between 0 and 6.



Note

- When playing a DVD disc encoded with two or more channels, multi-channel mode will be selected automatically and **PL II** (Dolby Pro Logic II) button does not work.

- **PANORAMA:** This mode extends the front stereo image to include the surround speakers for an exciting "wraparound" effect with side wall imaging.
- **CENTER WIDTH:** Sound is output to the center speaker only. The front left and right speakers produce phantom sound.
- **DIMENSION:** Incrementally adjusts the sound field (DSP) from the front or rear.

Manufactured under license from Dolby Laboratories. "Dolby," "Pro Logic," and the double-D symbol are trademarks of Dolby Laboratories. Confidential Unpublished Works. ©1992-1997 Dolby Laboratories, Inc. All rights reserved.

Manufactured under license from Digital Theater Systems, Inc. US Pat. No. 5,451,942 and other world-wide patents issued and pending. "DTS" and "DTS Digital Surround" are trademarks of Digital Theater Systems, Inc. ©1996 Digital Theater Systems, Inc. All rights reserved.

Setting the RRSS (Rear Reflecting Surround System)

- By setting up the RRSS function just once, the speaker distance, channel level, and rear sound reflection effect are automatically set and create an optimal listening environment.
- This function works only in DVD/CD mode.

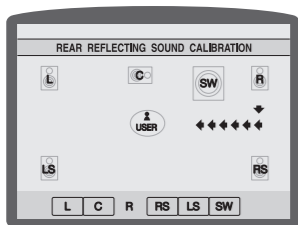
1 Connect the RRSS Microphone to the RRSS input jack.

2 Place the RRSS Microphone at the listening position.

3 Press the **RRSS** button.

4 When "REMOVE MIC" appears on the display, disconnect the RRSS Microphone.

- A speaker tone will be heard once from each speaker in the order of L → C → R → RS → LS → SW, and then the newly set error tone will be heard again from L → R.
- An optimal listening environment will be set up automatically.
- It takes about 3 to 4 minutes to complete the RRSS setup.

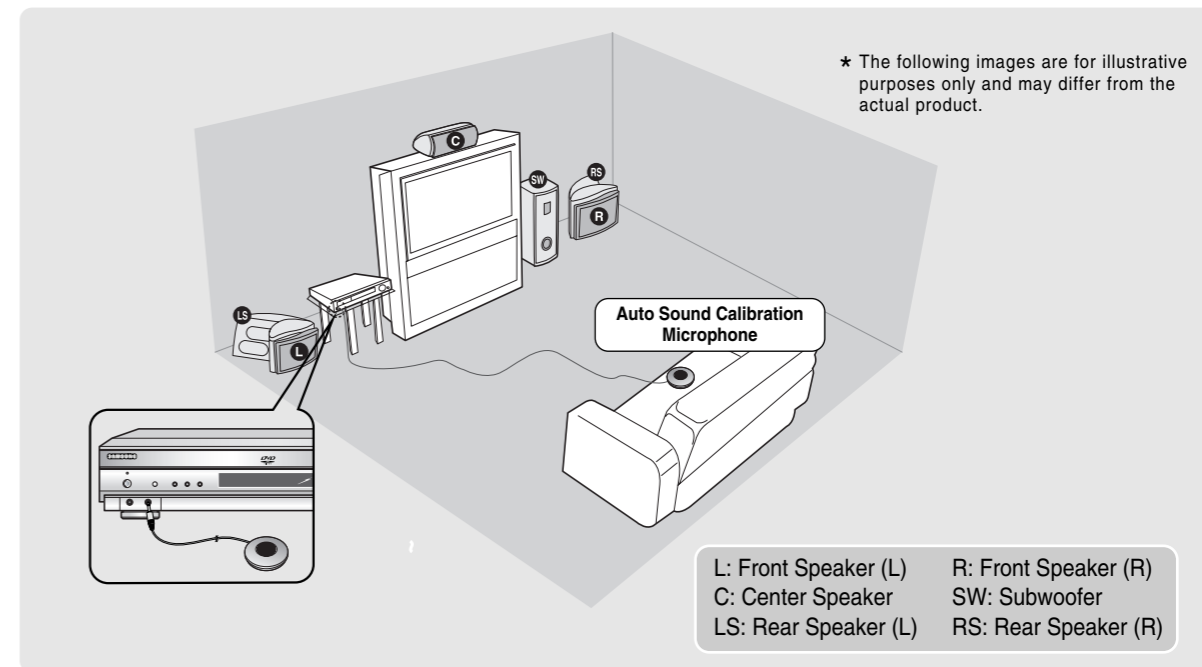
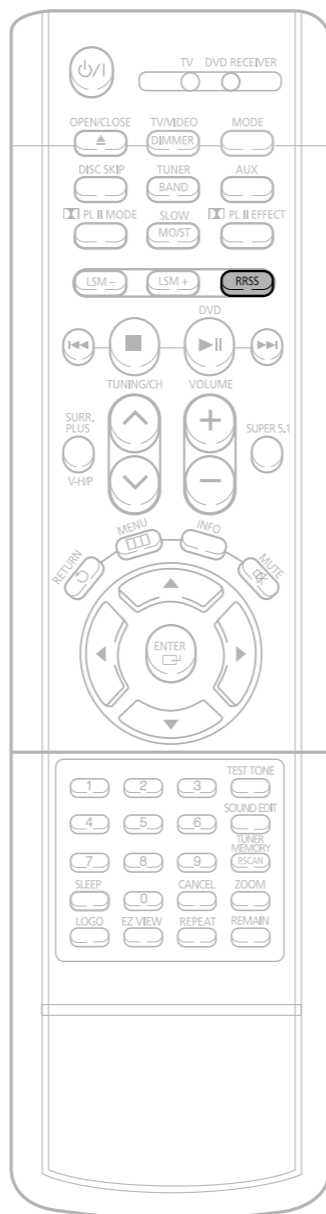


Tone Output
↓

A piano sound will be heard and the setup will be completed.

Note

- The RRSS button works as the RRSS setup function shown above if the RRSS Microphone is connected, and works as the rear sound reflection effect function if the microphone is removed.
- If you are installing the system for the first time or if you have initialized the system, "NO MEASURED DATA" will appear on the display when you press the RRSS button without connecting the RRSS Microphone.
- During the RRSS setup, the output volume of the tone is fixed and you cannot use the volume control buttons to adjust the output level.
- If you remove the RRSS Microphone during the RRSS setup, the setup will be cancelled.
- Place the front and left speakers (L/R) toward the side walls so that the rear speaker sound is reflected against the walls.



To select the RRSS that you have set

Briefly press the **RRSS** button.

(If you have set the RRSS for the first time according to Steps 1 to 3 on the previous page)

- Your selection will toggle between "REAR REFLECTING ON" and "REAR REFLECTING OFF" on the display.
- Select "REAR REFLECTING ON" to listen using the RRSS setting and select "REAR REFLECTING OFF" to listen to the disc currently being played in its original setting.

To check the RRSS that you have set

1. Press and hold the **RRSS** button twice.
 - "CHECK" appears on the display.
2. Next, briefly press the **RRSS** button.
 - The speaker distance and level value for each channel will be displayed.

To cancel the RRSS setup

Press the **RRSS** button.

- The tone output stops, "CANCEL" appears on the display, followed by "REMOVE MIC", and then the setup will be cancelled.

To enable or disable the sound logo

When you turn on the power, a sound logo will be heard, indicating that the disc reading is completed and the player is in its optimal condition to play the disc.

1. Press and hold the RRSS button.

- "S.LOGO ON" or "S.LOGO OFF" appears on the display.

2. Briefly press the RRSS button.

- Each time you press the button, your selection toggles between "S.LOGO ON" and "S.LOGO OFF".
- Select "S.LOGO ON" to enable the sound logo and select "S.LOGO OFF" to disable the sound logo.

Caution

- If the system is installed at a location where sound cannot be reflected (e.g., an open space without walls), the speaker distance, channel level, and rear sound reflection effect may be set incorrectly during the RRSS setup.

Rear Reflecting Surround System

You can enjoy realistic sound reproduction that approximates 5.1-channel surround sound using the front speakers.

1 Press the **RRSS** button to select "REAR REFLECTING ON".

- The rear sound reflection function will be enabled and you can enjoy the 5.1-channel surround sound.

REAR RE...ON

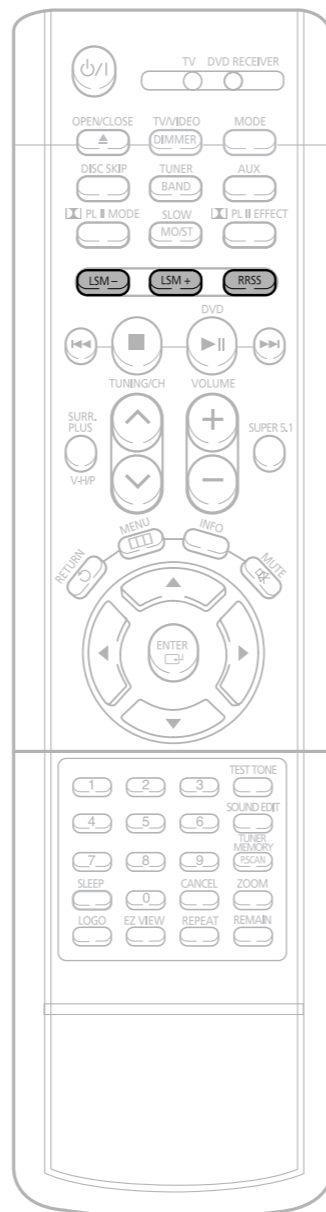
2 To cancel the rear sound reflection function, press the **RRSS** button again to select "REAR REFLECTING OFF".

REAR R...OFF

What is RRSS?

(RRSS: Rear Reflecting Surround System)

- The sound from the front/rear speakers, which are located in the front, is first reflected against the side walls (or the ceiling) and then reflected against the rear wall before reaching the listener. It allows you to enjoy the realistic sound reproduction equal to that of a 5.1-channel speaker system using only 3 speakers.
- It not only increases space efficiency but eliminates the need for speaker cable arrangement because it does not require installation of rear speakers.



Live Surround Mode

You can use the magic sound field to listen to 2-channel stereo sources in realistic 5.1-channel surround sound.

1 Play a Dolby Surround or 2-Channel disc, or listen to the radio.

3 To cancel the magic sound field function, press and hold the **Live Surround Mode** button on the main unit for longer than 1 second.

Note

- Depending on the disc being played, the effect of each sound field may vary.
- You cannot select SUPER 5.1 mode when playing a DVD disc recorded in more than 2 channels.

2 Each time you press the **Live Surround Mode +** button, the mode display changes in the order shown below. Each time you press the **Live Surround Mode -** button, the mode display changes in the reverse order.

- CINEMA** : A powerful sound field effect as in a movie theater.
- STADIUM** : A sound field effect of being at a soccer or baseball game.
- LIVE** : A sound field effect with a spatial feeling as in a live concert hall.
- JAZZ** : Select this when listening to jazz.
- ROCK** : Select this when listening to rock music.
- CLASSIC** : Select this when listening to classical music.
- DISCO** : A sound field with a powerful bass as in a disco club.
- SUPER 5.1** : Select this to listen to a 2 channel source in 5.1 channel.
- LSM OFF** : If you press the Live Surround Mode button on the main unit, the mode display will appear on the display in the same order as pressing the **Live Surround Mode + (LSM)** button on the remote control.



SURR. PLUS / Virtual Headphone

The Surround II function works when the headphone is not connected, and the Magic Headphone function works when the headphone is connected.

SURROUND PLUS

Enable the Surround plus function if you have installed the system at a location where sound cannot be reflected. You can create a virtual rear sound image to enjoy realistic sound reproduction that approximates 5.1-channel surround sound. (When you enable this function, the center speaker does not produce sound and the disc will be reproduced in 4.1-channel.)

1 Press the **SURR. PLUS** button to select the surround plus function.

- A realistic sound very similar to that of a 5.1-channel sound system will be produced.

SURR. PLUS

2 To cancel the surround plus function, press the **SURR. PLUS** button again.

- You can listen in regular stereo.

SURR. OFF

- Note**
- This function works only with DVDs recorded in more than 2 channels.
 - The surround plus function does not work with 2-channel sources such as music CDs or MP3 CDs.

Magic Headphone

You can enjoy a realistic sound very similar to that of a 5.1-channel sound system using regular stereo headphones.

1 Press the **Virtual Headphone** button to select "VIRTUAL ON".

- You can enjoy the feeling of being in the middle of a concert hall using headphones.

VIRTUAL ON

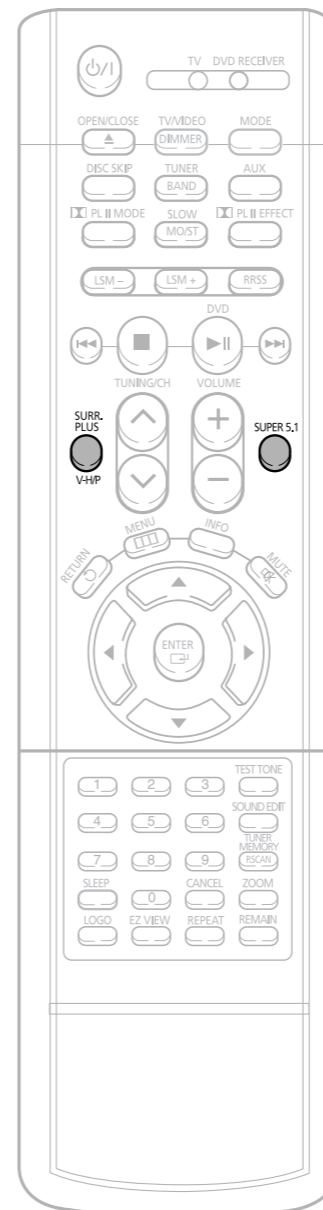
2 To cancel this function, press the **Virtual Headphone** button to select "VIRTUAL OFF".

- You can listen in a regular 2-channel stereo.

VIRTUAL OFF

SUPER 5.1

You can reproduce 2-channel sources, such as VCDs, CDs, and radio broadcasts, in realistic 5.1-channel surround sound.



1 Press the **SUPER 5.1** button to select "SUPER 5.1".

- A 2-channel source will be reproduced in 5.1 channel.

SUPER 5.1

2 To cancel this function, press the **SUPER 5.1** button to select "SUPER OFF".

Note

- If you insert a DVD recorded in more than 2 channels and press the SUPER 5.1 button, "THIS FUNCTION APPLIES ONLY 2CH SOURCE" will appear on the display and the function will not work.

SUPER OFF

Listening to Radio

You can listen to the chosen band (FM, AM broadcast stations) by using either the automatic or manual tuning operation.

Presetting Stations

You can store up to:

- 15 FM stations
- 15 AM stations
- FM Frequency Modulation
- AM(MW) Medium Wave

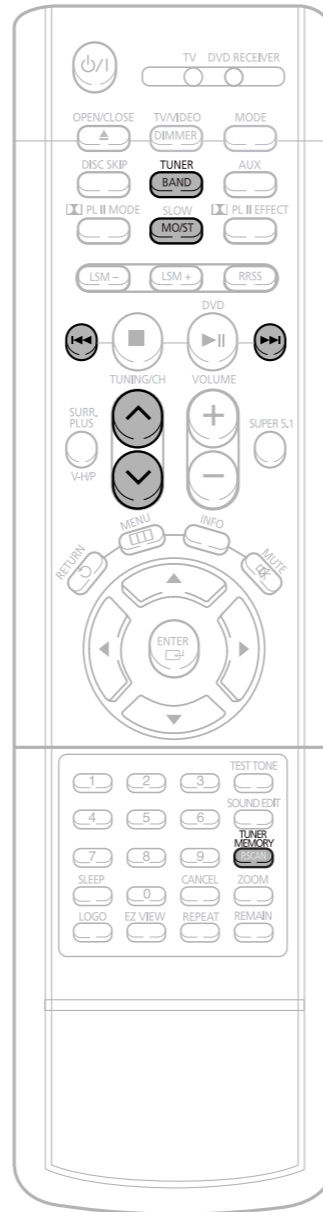
Remote Control Unit

1 Press TUNER/BAND button.

- The selection toggles back and forth between "FM" and "AM" each time the TUNER(BAND) button is pressed.

2 Tune in to the desired station.

- Automatic Tuning 1** When **◀▶▶▶** is pressed, a preset broadcast station is selected.
- Automatic Tuning 2** Press and hold **TUNING/CH** **⬆** **⬇** to automatically search for active broadcasting stations.
- Manual Tuning** Briefly press **TUNING/CH** **⬆** **⬇** to increase or decrease the frequency incrementally.



Main Unit

1 Press the Function button to select the desired band (FM, AM).

2 Select a broadcast station.

- Automatic Tuning 1** Press the **STOP** (■) button to select PRESET and then press **◀▶▶▶** button to select the preset station.
- Automatic Tuning 2** Press the **STOP** (■) button to select "MANUAL" and then press and hold **◀▶▶▶** button to automatically search the band.
- Manual Tuning** Press **STOP** (■) to select MANUAL and then briefly press **◀▶▶▶** to tune in to a lower or higher frequency.

Example: Presetting FM 89.1 in the memory

1 Press the TUNER(BAND) button and select the FM band.

- Each time the button is pressed, the band switches between "FM" and "AM".



2 Press **TUNING/CH** **⬆** **⬇** to select "89.10".

- Refer to Step 2 on page 63 to automatically or manually tune in to a station.



3 Press the TUNER MEMORY button.

- "PRGM" flashes in the display.



4 Press **◀▶▶▶** to select preset number

- You can select between 1 and 15.



5 Press the TUNER MEMORY button.

- Press the TUNER MEMORY button before 'PRGM' disappears from the display.
- 'PRGM' disappears from the display and the station is stored in memory.



6 To preset another station, repeat steps 2 to 5.

Press **MO/ST** button to listen in Mono/Stereo.
(This applies only when listening to an FM station.)

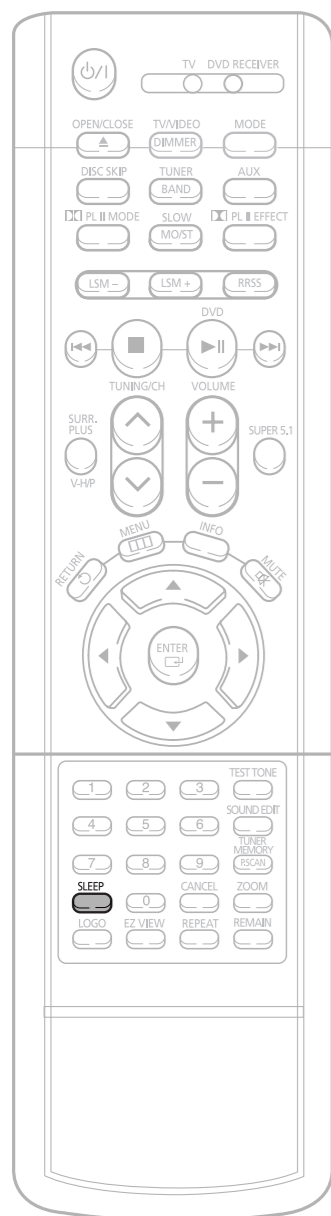
- Each time the button is pressed, the sound switches between "STEREO" and "MONO".
- In a poor reception area, select MONO for a clear, interference-free broadcast.

To tune in to a preset station, press **◀▶▶▶** on the remote control to select a channel.

Convenient Functions

Sleep Timer Function

You can set the time that the DVD player will shut itself off.



Press **SLEEP** button.

- "SLEEP" will be displayed. Each time the button is pressed the preset time changes as follows: 10 → 20 → 30 → 60 → 90 → 120 → 150 → OFF.

SLEEP 10

To confirm the sleep timer setting, press **SLEEP** button.

- The remaining time before the DVD player will shut itself off is displayed.
- Pressing the button again changes the sleep time from what you have set earlier.

To cancel the sleep timer, press **SLEEP** button until OFF appears on the display.

Tray-Lock Function

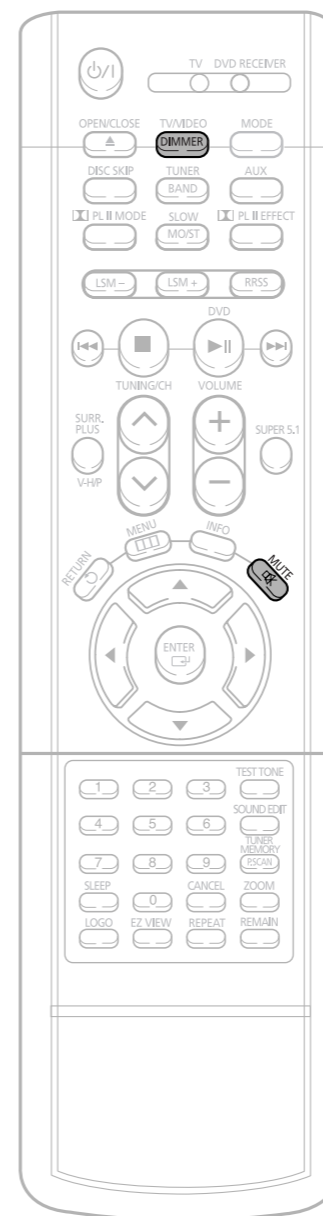
This feature allows you to lock the tray in place so that children cannot pull on it or otherwise damage it.

With the power on, press and hold the **OPEN/CLOSE** button on the main unit for longer than 4 seconds.

- "LOCK" appears on the display and the tray will be locked.
- To disable this function, press and hold the **OPEN/CLOSE** button on the main unit for longer than 4 seconds. "UNLOCK" appears on the display and the Tray-Lock function will be cancelled.

Adjusting Display Brightness

You can adjust the brightness of the display on the main unit so it won't interfere with your movie viewing.



Press **DIMMER** button.

- Each time the button is press, the brightness changes as follows: 'SLIGHTLY DARK → DARK → BRIGHT'.

Mute Function

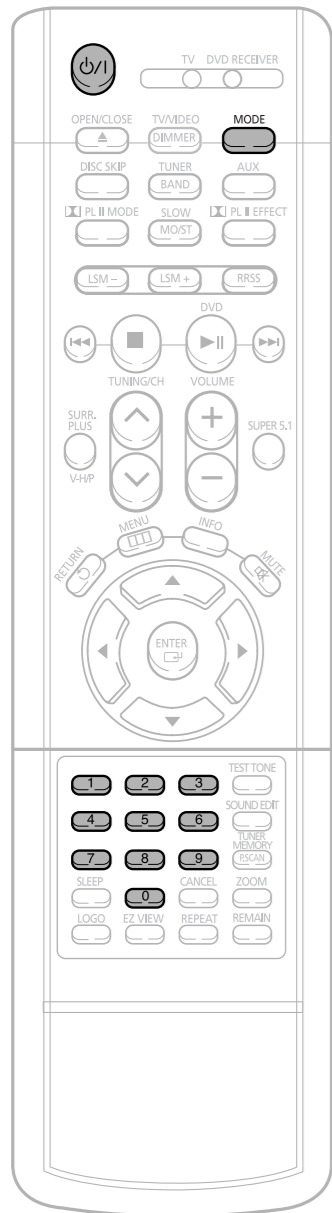
This is useful when answering a doorbell or telephone call.

Press **MUTE** button.

- 'MUTE ON' appears in the display.
- To restore the sound, press the button again to select 'MUTE OFF'.

MUTE ON

Operating the TV with the Remote Control



When operating the TV with the remote control

1 Press the **MODE** button on the remote control to make the TV indicator flash.



2 Press **POWER** button to turn on the TV.

3 Point the remote control toward the TV.

4 While holding down **POWER**, enter the code corresponding to your brand of TV.

- If the code matches the TV's code, the TV will be turned off.
- If there is more than one code listed for your TV in the table, enter one at a time to determine which code works.

Example: For a Samsung TV

While holding down **POWER**, use the number buttons to enter 00, 01, 02, 03, 04, and 05.

5 Point the remote control toward the TV and press **POWER**. If the TV turns off or on, the setting is complete.

- You can use the TV **POWER**, **VOLUME**, **CHANNEL**, and **Numeric** buttons (0-9).

Note

- The remote control may not work on some brands of TVs. Also some operations may not be possible depending on your brand of TV.
- If you do not set the remote control with the code for your brand of TV, the remote control will work on a Samsung TV by default.

TV Brand Code Number



| No. | Brand | Code | No. | Brand | Code |
|-----|------------|---|-----|--------------------|------------|
| 1 | SAMSUNG | 00(Initial Value), 01, 02, 03, 04, 05, 73 | 30 | BRANDT | 41 |
| 2 | ANAM | 06-11, 59 | 31 | FERGUSON | 41 |
| 3 | DAEWOO | 12-18, 20, 21 | 32 | PIONEER | 41, 48, 74 |
| 4 | LG | 05, 20, 21, 22, 53 | 33 | TELEAVA | 41 |
| 5 | HITACHI | 23, 40, 41, 49 | 34 | FINLUX | 05, 42, 47 |
| 6 | JVC | 24, 55 | 35 | FISHER | 31 |
| 7 | SHARP | 27, 33, 34, 35, 54 | 36 | AKAI | 31 |
| 8 | SONY | 27, 36 | 37 | YOKO | 05 |
| 9 | TOSHIBA | 27, 37, 42, 43, 44, 46 | 38 | PHONOLA | 05, 45, 47 |
| 10 | SANYO | 27, 30, 31, 32 | 39 | RADIOLA | 05, 45 |
| 11 | mitsubishi | 05, 27, 28 | 40 | SCHNEIDER | 05 |
| 12 | MATSUSHITA | 09, 26 | 41 | NEWSAN | 58 |
| 13 | TELEFUNKEN | 41, 49, 51, 57 | 42 | CONTINENTAL EDISON | 49 |
| 14 | RCA | 29, 61 | 43 | SALORA | 48 |
| 15 | PANASONIC | 07, 09, 26, 48, 49, 50 | 44 | SELECO | 48 |
| 16 | SABA | 40, 41, 47, 48, 49 | 45 | NOKIA | 48 |
| 17 | PHILIPS | 05, 45, 47, 64, 65, 66, 67, 68, 69 | 46 | REX | 48 |
| 18 | GRUNDIG | 39, 42, 46, 70, 71, 72 | 47 | MIVAR | 46 |
| 19 | ZENITH | 38 | 48 | IMPERIAL | 46 |
| 20 | MIVAL | 52 | 49 | CGE | 46 |
| 21 | NOBLEX | 56 | 50 | BANG & OLUFSEN | 47 |
| 22 | EMERSON | 19 | 51 | BRIONVEGA | 47 |
| 23 | MAGNAVOX | 25 | 52 | FORMENTI | 47 |
| 24 | LOEWE | 05, 60 | 53 | METZ | 47 |
| 25 | THOMSON | 40, 41, 49, 62, 63 | 54 | WEGA | 47 |
| 26 | NORDMENDE | 40, 41, 49 | 55 | RADIOMARELLI | 47 |
| 27 | LOEWE OPTA | 36, 47, 05 | 56 | SINGER | 47 |
| 28 | BLAUPUNKT | 39 | 57 | SINUDYNE | 47 |
| 29 | SIEMENS | 39 | | | |



Before Calling for Service

Refer to the chart below when this unit does not function properly. If the problem you are experiencing is not listed below or if the instruction below does not help, turn off the unit, disconnect the power cord, and contact the nearest authorized dealer or Samsung Electronics Service Center.

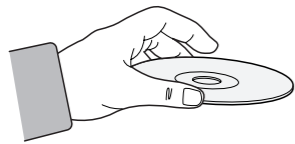
| Symptom | Check/Remedy |
|---|--|
| Disc tray does not open. | <ul style="list-style-type: none"> • Is the power cord plugged securely into the outlet? • Turn off the power and then turn it back on. • Did you enable the Tray-Lock function? To disable this function, press and hold the OPEN/CLOSE button on the main unit for longer than 4 seconds while the power is on. |
| Playback does not start. | <ul style="list-style-type: none"> • Check the region number of the DVD. DVD discs purchased from abroad may not be playable. • CD-ROMs and DVD-ROMs cannot be played on this DVD player. • Make sure that the rating level is correct. |
| Playback does not start immediately when the Play/Pause button is pressed. | <ul style="list-style-type: none"> • Are you using a deformed disc or a disc with scratches on the surface? • Wipe the disc clean. |
| Sound is not produced. | <ul style="list-style-type: none"> • No sound is heard during fast playback, slow playback, and step motion playback. • Are the speakers connected properly? Is the speaker setup correctly customized? • Is the disc severely damaged? |
| Sound can be heard only from a few speakers and not all six. | <ul style="list-style-type: none"> • When listening to a CD or radio, sound is output to the front speakers (L/R) only. Select "PRO LOGIC II" by pressing <input checked="" type="checkbox"/> PL II (Dolby Pro Logic II) on the remote control to use all six speakers. • Make sure that the DVD disc is 5.1-CH compatible. • If you set C, SL, and SR to NONE in the speaker mode in the audio setup of the setup screen, no sound is heard from the center speaker and the front left and right speakers. Set C, SL, and SR to SMALL. |
| Picture does not appear, sound is not produced, or the disc tray opens 2 to 5 seconds later. | <ul style="list-style-type: none"> • Was the DVD player suddenly moved from a cold place to a warm one? When condensation forms inside the player, remove the disc and let the player stand for 1 or 2 hours with the power on. (You can use the player again after condensation disappears.) |
| Dolby Digital 5.1 CH Surround Sound is not produced. | <ul style="list-style-type: none"> • Is there "Dolby Digital 5.1 CH" mark on the disc? Dolby Digital 5.1 CH Surround Sound is produced only if the disc is recorded with 5.1 channel sound. • Is the audio language correctly set to DOLBY DIGITAL 5.1-CH in the information display? |

| Symptom | Check/Remedy |
|---|--|
| <ul style="list-style-type: none"> • Disc is rotating but no picture is produced. • Picture quality is poor and picture is shaking. | <ul style="list-style-type: none"> • Is the TV power on? • Are the video cables connected properly? • Make sure that the disc is not a PAL- disc. • Is the disc dirty or damaged? • A poorly manufactured disc may not be playable. |
| The remote control does not work. | <ul style="list-style-type: none"> • Is the remote control being operated within its operation range of angle and distance? • Are the batteries exhausted? • Have you select the mode(TV/DVD) functions of the remote control (TV or DVD) correctly? |
| Audio language and subtitles do not work. | <ul style="list-style-type: none"> • Audio language and subtitles will not work for DVDs not containing them. And depending on the disc, they may work differently. |
| Menu screen does not appear even when the menu function is selected. | <ul style="list-style-type: none"> • Are you using a disc that does not contain menus? |
| Aspect ratio cannot be changed. | <ul style="list-style-type: none"> • You can play 16:9 DVDs in 16:9 WIDE mode, 4:3 LETTER BOX mode, or 4:3 PAN SCAN mode, but 4:3 DVDs can be seen in 4:3 ratio only. Refer to the DVD disc jacket and then select the appropriate function. |
| Can't receive radio broadcast. | <ul style="list-style-type: none"> • Is the antenna connected properly? • If the antennas input signal is weak, install an external FM antenna in an area with good reception. |
| <ul style="list-style-type: none"> • The main unit is not working. (Example: The power goes out or strange noise is heard.) • The DVD player is not working normally. | <ul style="list-style-type: none"> • Turn off the power and hold the  button on the main unit for longer than 5 seconds. <p>Using the RESET function will erase all stored settings. Do not use this unless necessary.</p> |
| The password for rating level has been forgotten. | <ul style="list-style-type: none"> • While "NO DISC" message appears on the display of main unit, hold the main unit's  button for longer than 5 seconds. "INITIAL" appears on the display and all settings will return to the default values. • Press the POWER button. <p>Using the RESET function will erase all stored settings. Do not use this unless necessary.</p> |

Cautions on Handling and Storing Discs

Small scratches on the disc may reduce sound and picture quality or cause breaks in playback. Be especially careful not to scratch discs when handling them.

● Handling discs



**Do not touch the playback side of the disc. Hold the disc by the edges so that fingerprints will not get on the surface.
Do not stick paper or tape on the disc.**

● Disc Storage

| | | |
|--|--|--|
| <p>Do not keep in direct sunlight</p> | <p>Keep in a cool ventilated area</p> | <p>Keep in a clean Protection jacket. Store vertically.</p> |
|--|--|--|

- Caution**
- Do not allow the discs to become contaminated with dirt.
 - Do not load cracked discs or discs that are scratched.

● Handling and Storing Discs



When you get fingerprints or dirt on the disc, clean it with a mild detergent diluted in water and wipe with a soft cloth.

- When cleaning, wipe gently from the inside to the outside of the disc.

Note






- Condensation may form if warm air comes into contact with cold parts inside the player. When condensation forms inside the player, the player may not operate correctly. If this occurs, remove the disc and let the player stand for 1 or 2 hours with the power on.

Specifications

| | | | | |
|-------------------|-----------------------------|--|-------------------------|--------------------------|
| GENERAL | Power Consumption | 160W | | |
| | Weight | 23 lb | | |
| | Dimensions (W x H x D) | 17 x 3.7 x 16 inches | | |
| | Operating Temperature Range | 41°F ~ 95°F | | |
| | Operating Humidity Range | 10% ~ 75% | | |
| FM TUNER | Usable Sensitivity | 10dB | | |
| | S/N Ratio | 60dB | | |
| | Distortion | 0.5% | | |
| AM TUNER | Usable Sensitivity | 54dB | | |
| | S/N Ratio | 40dB | | |
| | Distortion | 2% | | |
| VIDEO INPUT | Component Video | Y:1.0Vp-p(75Ω load), Pr:0.70Vp-p(75Ω load) Pb:0.70Vp-p(75Ω load) | | |
| | Composite Video | 1.0Vp-p(75Ω load) | | |
| VIDEO OUTPUT | Component Video | Y:1.0Vp-p(75Ω load) Pr:0.70Vp-p(75Ω load) Pb:0.70Vp-p(75Ω load) | | |
| | | Luminance Signal: 1.0Vp-p(75Ω load) Color Signal: 0.286Vp-p(75Ω load) | | |
| | S-VIDEO | Luminance Signal: 1.0Vp-p(75Ω load) Color Signal: 0.286Vp-p(75Ω load) | | |
| | | | | |
| AMPLIFIER | Front speaker output | 80W(6Ω)/CH | | |
| | Center speaker output | 80W(6Ω) | | |
| | Rear speaker output | 80W(6Ω)/CH | | |
| | Subwoofer speaker output | 100W(3Ω) | | |
| | Frequency range | 20Hz~20KHz | | |
| | S/N Ratio | 75dB | | |
| | Channel separation | 50dB | | |
| Input sensitivity | (AUX)500mV | | | |
| SPEAKER | Speaker system | 5.1ch speaker system | | |
| | | Front/Rear/Center speaker | Subwoofer speaker | |
| | Impedance | 6Ω | 3Ω | |
| | Frequency range | 100Hz~20kHz | 40Hz~200Hz | |
| | Output sound pressure level | 88dB/W/M | 86dB/W/M | |
| | Rated input | 80W | 100W | |
| | Maximum input | 160W | 200W | |
| | Dimensions (W x H x D) | Front/Rear | 12.1 x 7.5 x 7.3 inches | 6.3 x 17.1 x 16.0 inches |
| | | Center | 11.8 x 7.5 x 4.6 inches | |
| | Weights | Front/Rear | 3.3 lbs | 18.7 lb |
| Center | | 2.6 lb | | |



Notes on Terminology

| | |
|---|--|
| ANGLE | Recorded onto some DVD discs are scenes which have been simultaneously shot from a number of different angles (the same scene is shot from the front, from the left, from the right, etc.). With such discs, the Angle button can be used to change the angle of view for specific scenes. |
| CHAPTER NUMBER | These numbers are recorded on DVD discs. A Title is subdivided into many sections, each of which is numbered, and specific parts of the video can be searched quickly using these numbers. |
| DVD | A high-density optical disc on which high-quality pictures and sound have been recorded by means of digital signals. Incorporating a new video compression technology (MPEG-2) and high-density recording technology, a DVD disc comprises two 0.6 mm thick discs bonded together. |
| PCM | An acronym for Pulse Code Modulation - another name for digital audio. |
| PBC (PLAYBACK CONTROL) | This is recorded on a video CD (version 2.0). Selected scenes or information can be chosen from the menu displayed on the TV monitor. |
| REGION NUMBER | Both the DVD player and DVD discs are encoded with a region number. If the region number on the DVD disc does not correspond to the region number of the DVD player, the player cannot play the disc. |
| SUBTITLES | Translated appearing at the bottom of the screen. A DVD disc can contain up to 32 subtitle languages. |
| TITLE NUMBER | These numbers are recorded on DVD discs. When a disc contains two or more movies, these movies are numbered as Title 1, Title 2, etc. |
| TRACK NUMBER | These numbers are assigned to the tracks which are recorded on video and audio CDs. They enable specific tracks to be located quickly. |
| VIDEO CD | Contains recordings of pictures and sound whose quality is roughly comparable to that of video tape. This player also supports video CDs with playback control (version 2.0). |
|  | You can enjoy 5.1 (or 6) channels of high fidelity digital sound from various digital input sources such as DVD, CD etc. DTS provides a realistic, clear surround sound that has not previously been available from conventional surround sound. |
|  | 5.1 (or 6) Channel Digital Surround sound reproduced from DVDs and LDs recorded as a digital signals (with  disc marking). With better sound quality, dynamic range, and directionality than traditional Dolby surround technology, you can enjoy dynamic, realistic sound. |
|  | A 4 channel analog sound reproduced from a program source such as a videotape or LD with the  mark. You can enjoy a more realistic, robust sound unavailable from regular stereo sources. |

SAMSUNG DVD PLAYER

LIMITED WARRANTY TO ORIGINAL PURCHASER

This SAMSUNG brand product, as supplied and distributed by Samsung Electronics America, Inc. (SAMSUNG) and delivered new, in the original carton to the original consumer purchaser, is warranted by SAMSUNG against manufacturing defects in materials and workmanship for a limited warranty period of:

One (1) Year Parts and Labor*
(*90 Days Parts and Labor for Commercial Use)

This limited warranty begins on the original date of purchase, and is valid only on products purchased and used in the United States. To receive warranty service, the purchaser must contact SAMSUNG for problem determination and service procedures. Warranty service can only be performed by a SAMSUNG authorized service center. The original dated bill of sale must be presented upon request as proof of purchase to SAMSUNG or SAMSUNG's authorized service center. Transportation of the product to and from the service center is the responsibility of the purchaser.

SAMSUNG will repair or replace this product, at our option and at no charge as stipulated herein, with new or reconditioned parts or products if found to be defective during the limited warranty period specified above. All replaced parts and products become the property of SAMSUNG and must be returned to SAMSUNG. Replacement parts and products assume the remaining original warranty, or ninety (90) days, whichever is longer.

SAMSUNG's obligations with respect to software products distributed by SAMSUNG under the SAMSUNG brand name are set forth in the applicable end user license agreement. Non-SAMSUNG hardware and software products, if provided, are on an "AS IS" basis. Non-SAMSUNG manufacturers, suppliers, publishers, and service providers may provide their own warranties.

This limited warranty covers manufacturing defects in materials and workmanship encountered in normal, and except to the extent otherwise expressly provided for in this statement, noncommercial use of this product, and shall not apply to the following, including, but not limited to: damage which occurs in shipment; delivery and installation; applications and uses for which this product was not intended; altered product or serial numbers; cosmetic damage or exterior finish; accidents, abuse, neglect, fire, water, lightning or other acts of nature; use of products, equipment, systems, utilities, services, parts, supplies, accessories, applications, installations, repairs, external wiring or connectors not supplied and authorized by SAMSUNG, or which damage this product or result in service problems; incorrect electrical line voltage, fluctuations and surges; customer adjustments and failure to follow operating instructions, cleaning, maintenance and environmental instructions that are covered and prescribed in the instruction book; product removal or reinstallation; reception problems and distortion related to noise, echo, interference or other signal transmission and delivery problems. SAMSUNG does not warrant uninterrupted or error-free operation of the product.

THERE ARE NO EXPRESS WARRANTIES OTHER THAN THOSE LISTED AND DESCRIBED ABOVE, AND NO WARRANTIES WHETHER EXPRESS OR IMPLIED, INCLUDING, BUT NOT LIMITED TO, ANY IMPLIED WARRANTIES OF MERCHANTABILITY OR FITNESS FOR A PARTICULAR PURPOSE, SHALL APPLY AFTER THE EXPRESS WARRANTY PERIODS STATED ABOVE, AND NO OTHER EXPRESS WARRANTY OR GUARANTY GIVEN BY ANY PERSON, FIRM OR CORPORATION WITH RESPECT TO THIS PRODUCT SHALL BE BINDING ON SAMSUNG. SAMSUNG SHALL NOT BE LIABLE FOR LOSS OF REVENUE OR PROFITS, FAILURE TO REALIZE SAVINGS OR OTHER BENEFITS, OR ANY OTHER SPECIAL, INCIDENTAL OR CONSEQUENTIAL DAMAGES CAUSED BY THE USE, MISUSE OR INABILITY TO USE THIS PRODUCT, REGARDLESS OF THE LEGAL THEORY ON WHICH THE CLAIM IS BASED, AND EVEN IF SAMSUNG HAS BEEN ADVISED OF THE POSSIBILITY OF SUCH DAMAGES. NOR SHALL RECOVERY OF ANY KIND AGAINST SAMSUNG BE GREATER IN AMOUNT THAN THE PURCHASE PRICE OF THE PRODUCT SOLD BY SAMSUNG AND CAUSING THE ALLEGED DAMAGE. WITHOUT LIMITING THE FOREGOING, PURCHASER ASSUMES ALL RISK AND LIABILITY FOR LOSS, DAMAGE OR INJURY TO PURCHASER AND PURCHASER'S PROPERTY AND TO OTHERS AND THEIR PROPERTY ARISING OUT OF THE USE, MISUSE OR INABILITY TO USE THIS PRODUCT SOLD BY SAMSUNG NOT CAUSED DIRECTLY BY THE NEGLIGENCE OF SAMSUNG. THIS LIMITED WARRANTY SHALL NOT EXTEND TO ANYONE OTHER THAN THE ORIGINAL PURCHASER OF THIS PRODUCT, IS NONTRANSFERABLE AND STATES YOUR EXCLUSIVE REMEDY.

Some states do not allow limitations on how long an implied warranty lasts, or the exclusion or limitation of incidental or consequential damages, so the above limitations or exclusions may not apply to you. This warranty gives you specific legal rights, and you may also have other rights which vary from state to state.

To obtain warranty hardware service, please contact SAMSUNG at:

SAMSUNG CUSTOMER CARE CENTER
400 Valley Road, Suite 201, Mt. Arlington, NJ 07856, Tel: 973-601-6000, Fax: 973-601-6001
1-800-SAMSUNG (1-800-726-7864) and www.SAMSUNGUSA.com

Free Manuals Download Website

<http://myh66.com>

<http://usermanuals.us>

<http://www.somanuals.com>

<http://www.4manuals.cc>

<http://www.manual-lib.com>

<http://www.404manual.com>

<http://www.luxmanual.com>

<http://aubethermostatmanual.com>

Golf course search by state

<http://golfingnear.com>

Email search by domain

<http://emailbydomain.com>

Auto manuals search

<http://auto.somanuals.com>

TV manuals search

<http://tv.somanuals.com>