

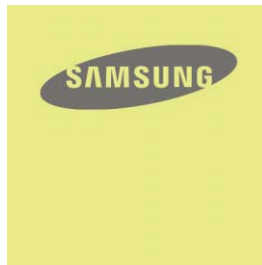


Samsung Electronics America, Inc.  
400 Valley Road, Suite 201 Mount Arlington, NJ 07856  
1-800-SAMSUNG (1-800-726-7864)  
www.samsung.com

AH68-01694L (Rev 0.0)

## YP-C1

Download from [www.Somanuals.com](http://www.Somanuals.com). All Manuals Search And Download.



## Preparations

Safety Instructions .....	4
Features .....	6
Components .....	8
Location of Controls .....	9

## Connection to Computer

Connecting the player to PC .....	11
Manual Installation of USB Driver .....	15
Downloading/Uploading Files .....	18
Disconnecting the USB cable .....	19
Formatting the Player on your PC .....	20
Installing Media Studio .....	21
Using Media Studio .....	23

## Basic Usage

Playing Music and Turning Off the Device .....	30
HOLD Function .....	31
Recording Voice .....	31
Recording MP3s .....	32
Searching for Music/Voice Files .....	34
Setting Bookmark .....	35
Listening to FM Radio .....	36
FM Recording .....	38

## Additional Usage

Loop Repeating .....	38
MENU Options .....	39
Using Navigation .....	40
Setting Playlist .....	43
Setting the Advanced Functions .....	44
Selecting the Playmode .....	45
Setting the EQ mode .....	46
● Preset EQ .....	46
● Bass Booster .....	46
● WOW Set .....	47
● User EQ Set .....	48
Display Settings .....	49
● Scroll / Display Time .....	49
● Backlight .....	50
● Tag / Bitrate .....	51
Language Settings .....	52
Setting the System .....	53
Recording Settings .....	56
Time Settings .....	57
Managing Files .....	58
To Upgrade Firmware .....	59

## Appendix

MENU Table .....	61
------------------	----

## Customer Support

Troubleshooting .....	62
Specifications .....	64
Warranty .....	68

Read and understand all the instructions to avoid injury to yourself and damage to the equipment.

<p>Do not expose to extreme temperatures (above 95°F or below 23°F). Do not expose to moisture.</p> 	<p>Do not subject the unit to severe impact, or place heavy objects on it.</p> 	<p>Do not let any foreign matter spill into the device.</p> 
<p>Be careful not to subject the player to excessive pressure when wearing it round your neck.</p> 	<p>Do not expose to chemicals such as benzene and thinners.</p> 	<p>Remove batteries when the device is left unused for a long period of time.</p> 
<p>Do not expose to direct sunlight or heat sources.</p> 	<p>Do not store in dusty areas.</p> 	<p>Do not try to disassemble and repair the device yourself.</p> 

\* Please be aware that we claim no responsibility for damage from data loss due to breakdown, repair or other causes.

## Earphones

### Follow Traffic Safety Instructions

- Do not use the earphones while driving an automobile or riding a bicycle. It's not only dangerous, but also against the law.
- It may cause an accident if you turn up the volume of the earphones while walking, especially when crossing intersections.

### Protect your ears

- Do not turn up the volume too high. Doctors warn against prolonged exposure to high volume.
- Stop using the device or turn the volume down if you have ringing in your ears.

## Ambient operating conditions

- Ambient temperature : 5°C ~ 35°C (41°F ~ 95°F)
- Humidity : 10 ~ 75%

## Environmental Information

- Follow local guidelines for waste disposal when discarding packages, batteries, and old electronic appliances.
- Your player is packaged with cardboard, polyethylene etc., and does not use any unnecessary materials.

## MP3, WMA , Audio ASF and Ogg Playback

- Your player supports playback of MP3, WMA, Secure WMA, Audio ASF and Ogg.
- \* OGG is a new audio compression format that is free, open and unpatented.  
For more info, see [www.vorbis.com](http://www.vorbis.com)
- \* ASF is a file format used in Windows Media player.  
This player can also play back ASF audio.

## Removable Storage Device

- You can easily copy and paste files to the player using Windows Explorer.

## Direct MP3 Recording

- You can convert music from CDs, cassettes, and radio into MP3 files without a PC.

## FM Reception

- Listening to an FM program is made easy with Auto Search and Frequency Memory functions.

## SRS WOW Surround Sound

- The 3D surround feature adds spaciousness to the sound.

## USB 2.0 Support

- Maximum data speed transfer of 18 Mbps.

## Upgradeable Firmware

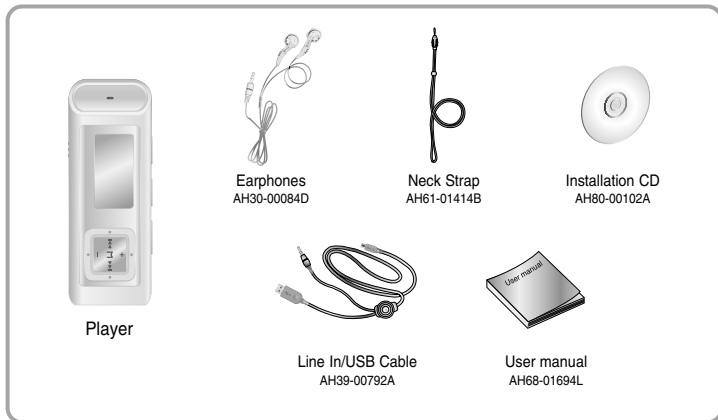
- You can upgrade the player's firmware when available.  
Please check the home page ([www.samsung.com](http://www.samsung.com)) for upgrades.

## 42 Hours of Continuous Play

- This player uses one AA/LR6 alkaline battery. Operation can last up to 42 hours.  
Actual playing time may vary according to the type and capacity of the battery.

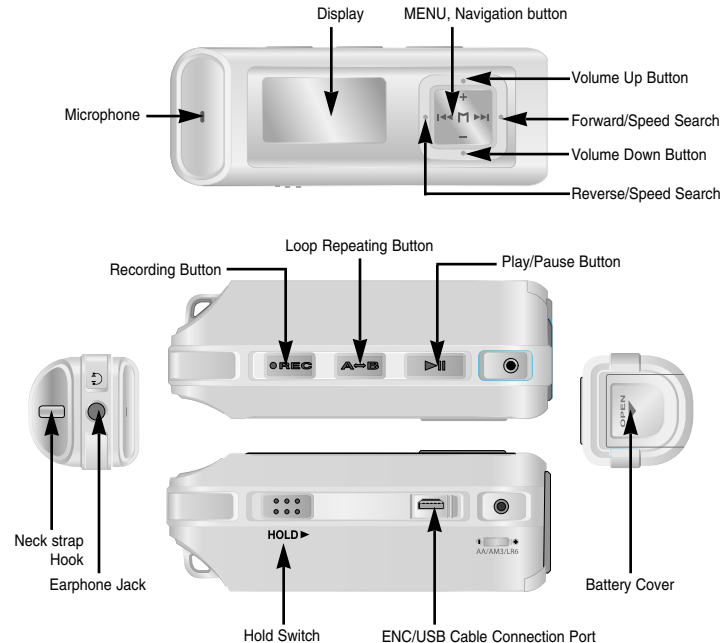
## Voice Recording Function

- You can make high quality voice recordings.

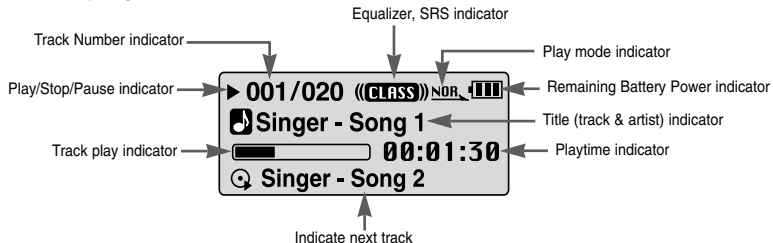


Model	YP-C1 H	YP-C1 V	YP-C1 X	YP-C1 Z
Built-in memory	128MB	256MB	512MB	1GB

- The capacity of the useable built-in memory is less than indicated as the internal firmware uses a part of the memory as well.
- Design of accessories is subject to change for the purposes of improvement, without notice.



## Display



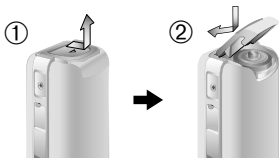
### Note

- The screen pictures are for illustration purposes only. The actual screen may differ.

## Inserting the Battery

The AA battery is not supplied.

- 1 Slide the cover in the direction of the arrow to open.
- 2 Insert the AA battery to the right poles (+, -) and push-close the cover in the direction of the arrow as indicated.



### Note

- Do not place heavy objects on the cover.

## System Requirements.

- The PC system must meet the following minimum specifications:
- Pentium 200MHz or greater
  - Windows 98 SE/ME/2000/XP
  - 40MB of available hard disk space
  - CD-ROM drive (double speed or greater)
  - USB port (2.0) supported
  - VGA graphic

### Note

- Install the operating system in Administrator Account (main user) for Windows 2000 or XP. Otherwise, installation will not be completed.
- Windows ME, 2000 and XP can recognize the driver without installing the provided program. However, you must install the program in order to format the player and upgrade firmware.
- If you are using Windows 98, install the USB driver first before connecting the player to your PC.

Before connecting the player to PC, make sure to install USB driver. If "Add New Hardware Wizard" appears, press the [Cancel] button and install the USB driver.

## Installing software

- 1 Insert the Installation CD into the CD-ROM drive. Select [Install Player USB Driver].



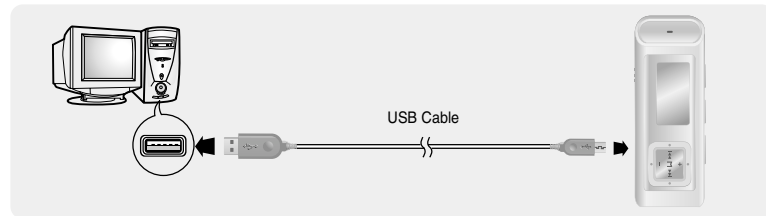
2 Follow the instructions in the window to complete the installation.



● When the software installation is complete, connect the player to the computer and use it as the following pages show.

## Connecting the player to PC with the USB cable

- 1 Connect the USB cable to the USB port on your PC.
- 2 Connect the other end of the USB cable to the USB cable connection port on the bottom of the player.
  - If you disconnect the USB cable from your PC while implementing a command or initializing during USB driver installation, your PC may not function correctly.
- 3 The USB driver is installed with a message saying that it is searching for a new device. You may not see the display screen during installation. Go to the device manager (see next page) to check that installation has been successfully completed.
- 4 Upon installation of the USB driver "Samsung YP-C1 USB Device" will appear in your PC's control panel under **[System Properties] → [Device Manager]**.



## How to check USB driver

Windows 98:

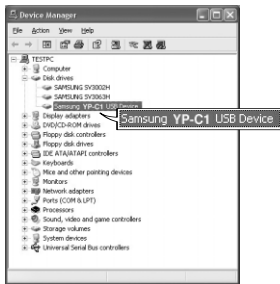
**Control Panel** → **System** → **Device Manager** → **Disk Drives** → **Samsung YP-C1**

Windows 2000:

**Control Panel** → **System** → **Hardware** → **Device Manager** → **Disk Drives** →  
**Samsung YP-C1 USB Device**

Windows XP:

**Control Panel** → **System** → **Hardware** → **Device Manager** → **Universal Serial Bus controllers** →  
**Disk Drives** → **Samsung YP-C1 USB Device**



5 When the USB driver is not installed automatically, refer to the next page.

Go to "Downloading/Uploading files" on page 18 if the USB driver is installed automatically. If an error occurs during installation of the USB driver, you must install the USB driver manually. Follow these steps if the USB driver is not installed:

Be sure the Installation CD is inserted in your PC's CD-Rom drive.

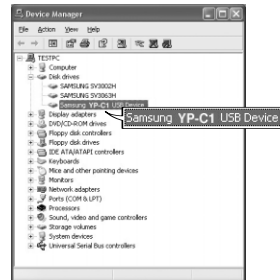
1 Check the device manager.

Windows 98,ME:

**Control Panel** → **System** → **Device Manager**

Windows 2000 / XP:

**Control Panel** → **System** → **Hardware** →  
**Device Manager**



2 Check if there is a device listed with an exclamation point or a question mark (displayed as unknown device or USB device).

3 Double click on the device listed with an exclamation point or a question mark.

### Note

- If you are using Windows 2000 and your version of Windows does not recognize the USB driver, please download and install the latest service pack from [windowsupdate.microsoft.com](http://windowsupdate.microsoft.com)
- The installation method may vary depending on the type of PC or operating system. Contact your PC dealer or service center for installation information.
- If errors occur continuously when you install the USB driver, reconnect the USB cable after rebooting your system.



4 After selecting the driver, click [Update Driver].



6 Select [Search for a suitable driver for my device] and then click [Next].



5 Click [Next].

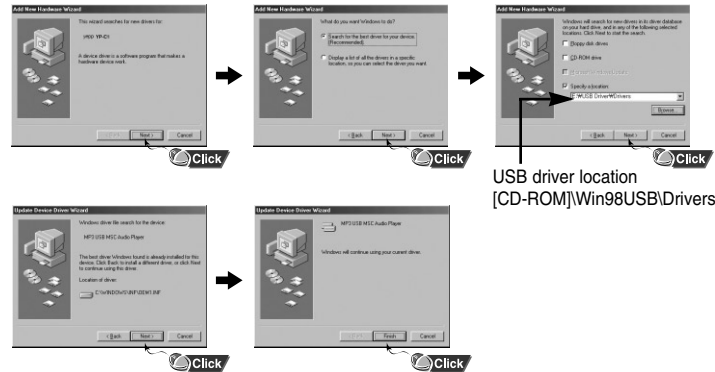


7 Click [Next] to finish.



## In Windows 98

Follow the instructions in the window to complete the installation.



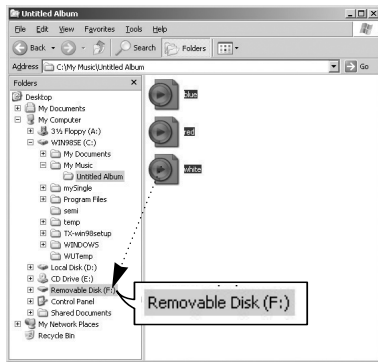
: You must reboot your computer to complete the installation.

## Note

- You cannot use the player as a removable disc in Windows 98SE if the YP-C1 program is not installed. Make sure to install the USB driver file first.

## Downloading/Uploading files

- 1 Connect the player to your PC with the supplied USB cable.
- 2 Open Windows Explorer on PC.
  - Removable Disc is displayed in Windows Explorer.
- 3 Select the file to save and drag-and-drop it into the removable disk icon. (Files appear on the player in numerical, alphabetical order)
  - For example, if you change the name of music files in Windows Explorer to 001\* \*\* , 002\* \*\* ..., the files will be played in the numerical order you set.

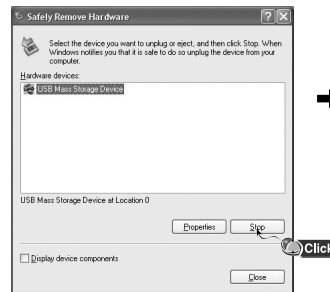


### Notice

- The "WRITING/READING" message will appear on the player's display during file download or upload. Disconnecting the USB cable while "WRITING/READING" is displayed may cause malfunction of the player.
- To use the player as removable (backup) storage for your PC, simply drag and drop files to the Removable Disc icon in Windows Explorer in the same way as saving music files above.

After completing the file transfer, you must disconnect the cable from the player in the following way:

- 1 Double-click on the green arrow in the taskbar on the bottom right of the window. The **Safely Remove Hardware** message appears. Press **Stop**.
- 2 When the **[Stop a Hardware device]** message appears, press the **[OK]** button and disconnect the USB cable from the player.



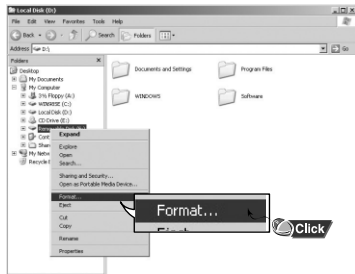
### Note

- If you disconnect the player improperly, the files on the device may be damaged and will not play.

Formatting deletes all files on the MP3 player so maximum memory is available for new file storage.

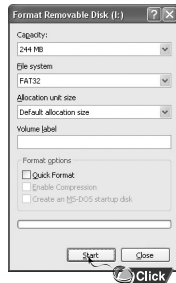
It saves you the trouble of deleting unwanted files one at a time.

**1** Select the removable disc icon in Windows Explorer and click the right mouse button to select **[Format]**.



**2** Press the **[Start]** button.

- All saved files will be deleted.
- You can change the name of removable disc by selecting **[Volume label]**.



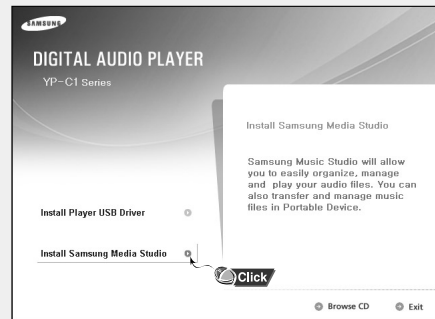
## Note

- By formatting, all previously preset menus will be reset, and any pre-existing song or data files will be erased.
- Care must be taken as formatted files can not be recovered.

Media Studio is the program that enables you to download music files to the player, and play back music files on your PC.

**1** Insert the Installation CD into CD-ROM drive.

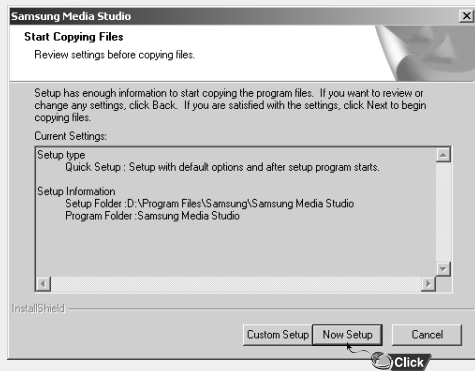
Select **[Install Samsung Media Studio]**.



**2** Select language.



3 Follow the instruction in the window to complete the installation.



● Double-click the Media Studio icon on the Desktop.

## 1 Downloading Music Files


1 Connect the player to PC.

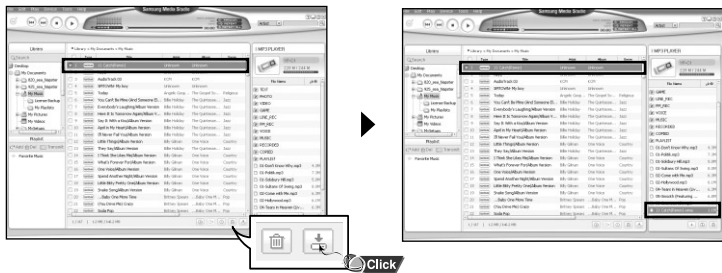
● A device connection window will appear on the right side of the screen. Select [Device] → [Show device Window] at the top of the screen if device connection window does not automatically appear.

2 Select the folder with the file(s) you want to transfer from the [Library] window.

● The music files within the folder appear in the center of the screen.



- 3 When music files appear, select the file(s) you want to transfer, and then press the [Transfer]  button.
- The selected file(s) are transferred to the player.



**Note**  
- Refer to the [Help] section of the software for more detailed information.

Formatting deletes all files on the MP3 player so maximum memory is available for new file storage. It saves you the trouble of deleting unwanted files one at a time.


## Formatting the Player in Media Studio

- 1 Connect the player to PC.
- 2 Press the [Device] → [Format] at the top of the screen.
- 3 Press the [Start] button when the Format screen appears.
- The memory of the player is formatted (erased) and all the saved files will be deleted.




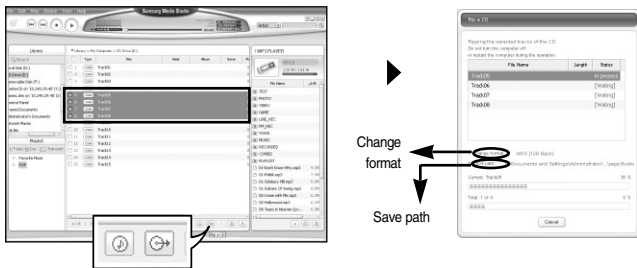
**Note**  
- Refer to the [Help] section of the software for more detailed information.

## Ripping Tracks from an Audio CD

- 1 Insert the Audio CD into the CD-ROM drive of your PC.
- 2 Press the [Search Audio CD]  button on the lower part of the Media Studio software screen.



- 3 Select tracks to be ripped and press the [Rip a CD]  button.
  - The selected file is converted into an MP3 file.
  - Select [Tools]→[Audio Source Format Conversion Settings] on the top of the screen to change rip settings. You can change a file format, bitrate and save path on rip settings.




**Note**

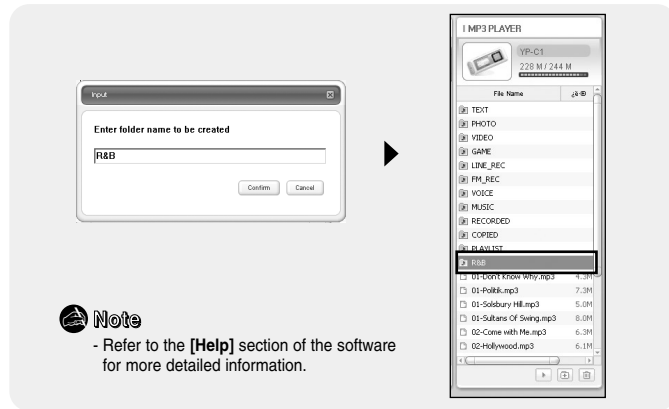
- Refer to the **[Help]** section of the software for more detailed information.

## Creating a Folder on your Player

You can create folders on the player to better organize your music.

- 1 Connect the player to your computer.
- 2 Press the **[Create Folder]**  button at the bottom of device connection window.
- 3 Enter the name of the new folder when an input screen appears.


- A new folder is created on the player.
- If you open a new folder and transfer a file, the file is transferred to the newly created folder on the player.

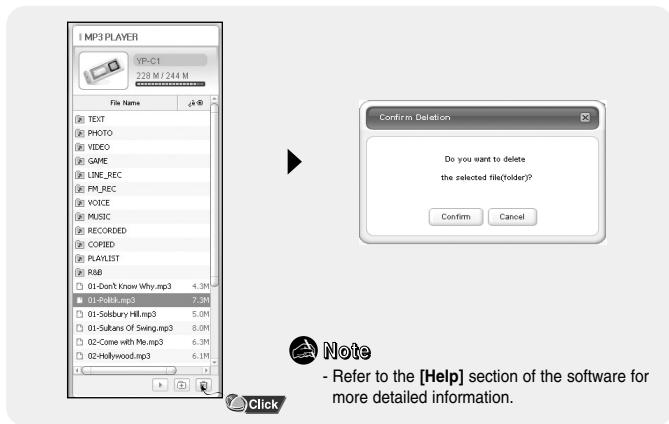


**Note**

- Refer to the **[Help]** section of the software for more detailed information.

## I Deleting Files

- 1 Connect the player to your computer.
- 2 Press the **[Delete]**  button at the bottom of the connection window after selecting files or folders you want to delete.
- 3 Press the **[Confirm]** button when the Confirm Deletion screen appears.
  - The selected folder or file is deleted.



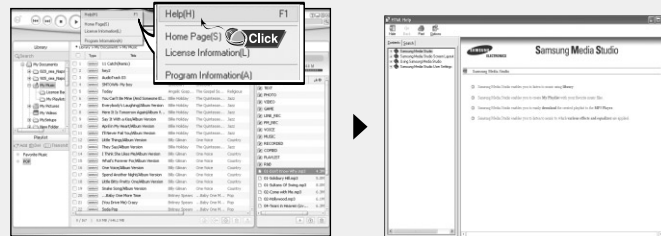
Press F1 on your PC's keyboard after starting Media Studio.

- Help will appear.

or

Click on **[Help]** at the top of Media Studio.

- Help window will appear.



### Note

- Music recognition technology and related data are provided by Gracenote and Gracenote CDDB™ Music Recognition Service<sup>SM</sup>.
- CDDB is a registered trademark of Gracenote. The Gracenote logo and logotype, the Gracenote CDDB logo and logotype, and the "Powered by Gracenote CDDB" logo are trademarks of Gracenote. Music Recognition Service and MRS are service marks of Gracenote.

Make sure the earphones are connected.

## Turning Power On and Off

**Power On :** Press the ►|| button to turn on the power.

**Power Off :** Press and hold the ►|| button to turn off the power.

## Playing Music

Press the ►|| button.

- Playback starts.

## Pausing Music

Press the ►|| button to pause playback.

- If no buttons are pressed within 10 seconds (changes depending on settings shown on page 57), the player automatically powers off.
- While in Pause mode, press the ►|| button again to resume playback.


## Adjusting the Volume

Press **-**, **+** to adjust the volume from 00 to 30.

### Note

- If the file name is not displayed correctly, move to **[Settings] → [Language] → [Menu]** and then change the language setting. When the language setting changes, the language in the menu screen changes accordingly.
- WMA files can only be played as music files with a compression rate of 48Kbps-192Kbps.
- The power off time can be set in the menu. See page 57.

In Hold mode, all buttons are disabled. This function is useful when you are walking or jogging.

Slide the  switch in the direction of the arrow.

- ⊛ When the button is pressed, the "🔒 HOLD!" message will appear on the display.

# Recording Voice

*\* To move to other modes from the Voice mode, refer to page 41 "Changing Modes".*

- 1 Press and hold the **REC** button for two seconds and then release to start voice recording.
- 2 Press the **REC** button again to stop the recording and save the voice file.



### Note

- The files are recorded in the order of V001, V002,....., and saved as WAV files in the VOICE folder after recording (Menu → Navigation → Voice).
- If the Memory is full, Voice Recording is stopped automatically.
- Voice Recording does not work in FM Mode or when the Line In cable is connected.

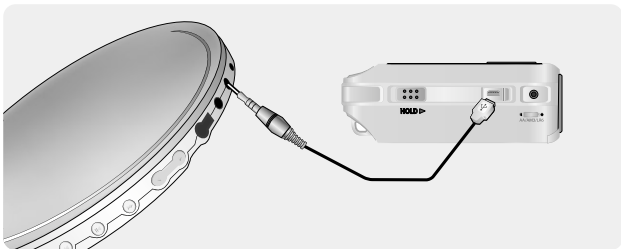


You can record music as MP3s directly from an external audio source without having to use your computer.

**\* To move to other modes from LINE\_ENC mode, refer to page 41 “Changing Modes”.**

**1** Connect the Audio Output port on the external audio source (or the Line Out port) to the ENC port on the device with the Line cable.

- Press the play button on the external device to play the music to record.



**2** Press and hold the REC button to start MP3 recording.

- If the ►|| button is pressed, recording is paused and if the ►|| button is pressed again, the recording resumes.

**3** If the REC button is pressed during recording, the recording stops and an MP3 file is created.

- The files are recorded in the order of L001, L002.... and saved as MP3 files in LINE\_ENC folder after recording.

#### Note

- Bit Rates can be set within the range of 32Kbps~128Kbps.
- Volume can be adjusted while monitoring the recording.

#### Notice

- Do not disconnect the Line cable during recording.
- If the battery is not sufficiently charged, the player will not completely record the file.
- Adjust the volume of the external audio source to a suitable level and record it. If the volume level is too high, the sound quality may be poor.

## ▲ To search for specific parts during play

- Press and hold **⏮, ⏭** during playback to search for the part you want to listen to.
- Release **⏮, ⏭** to resume play normally.

## ▲ To change tracks during play

- Press **⏭** briefly during playback to play the next track.
- Press **⏮** briefly within 5 seconds after playback starts, to move to and play the previous track. Press **⏮** briefly after five seconds to play the current track from the beginning.

## ▲ To change tracks when stopped

- Press **⏮, ⏭** in stop mode to move to the previous/next track.

### Note

- VBR(Variable Bit Rate) file: A file that constantly changes the compression rate according to the type of sounds, such as their pitch, in the file.
- When playing a VBR file, you cannot move to and play the previous track even if you press **⏮** within 5 seconds after playback starts.
- Files that were downloaded in MP2 or MP1 and had their file extension changed to MP3 may not play.

You can bookmark a point in a track to return to later.

## 1 Press the REC button briefly during playback.

- "IB" mark will be displayed and a bookmark is set.
- Press **⏮, ⏭** within the bookmarked file to move to the bookmarked locations.
- A bookmark can only be set in one track at a time, so if the bookmark function is set to on and playback advances to the next track, "B" will be displayed.



## 2 To remove the bookmark, press the REC button once again at the bookmark.

- "IB" mark will disappear.

First, press the "M" button to display the menu screen and select FM Radio.

## Manual Search for a Frequency

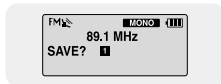
- Press **◀▶** briefly to search manually for the frequency you want.

## Automatic Search for a Frequency

- Press and hold **◀▶** to search for and stop at frequencies with reception.

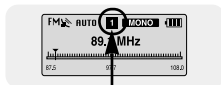
## Manual Storage of a Frequency

- After searching manually for the frequency you want, press the **A↔B** button to display the save screen.
- Press **◀▶** to select the number you want to assign to save the frequency and then press the **A↔B** button.



## Automatic Storage of a Frequency

- Press and hold the **A↔B** button while in FM Mode.
- Frequencies within the range of 87.5MHz to 108.0MHz are automatically selected and stored.
- Frequencies are automatically stored, starting from 1.



Number of channels saved.

### Note

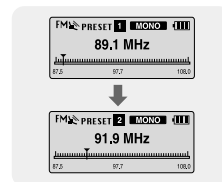
- To exit from FM Mode, press the "M" button.
- Mono (MO) or Stereo (ST) is automatically selected.

## Searching Stored Frequencies

1 Press the "M" button in FM Mode.

- PRESET screen will appear.

2 Use **◀▶** to move to the frequency you want.



## Deleting Stored Frequencies

1 After moving to the PRESET number you want to delete, press the **A↔B** button.

2 After selecting the "Y" (Yes), press the "M" button.

- The saved PRESET number will be deleted.



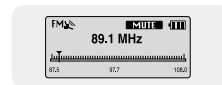
## Mute Function

1 Press the **▶||** button in FM mode.

- "MUTE" is displayed and no sound is heard.

2 Press the **▶||** button again.

- Mute function is released.

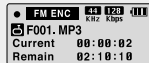


### Note

- You can store up to 20 frequencies.
- Press the "M" button in the PRESET screen to exit the PRESET mode.

1 Press and hold the **REC** button during FM reception.

- Recording of the currently transmitted FM broadcast begins.



2 Press the **REC** button again.

- A file is created and the recording stops.
- Files are recording in the order F001, F002, F003...and saved as MP3 files in FM\_ENC folder.

### Notice

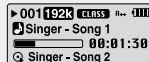
- If the battery is not sufficiently charged, the player will not completely record the file.

## Loop Repeating

### ▲ Starting Point

While playing music files, press the **A↔B** button briefly at the beginning of the loop you want to set.

**A↔** appears in the display.



### ▲ Ending Point

Press the **A↔B** button briefly again to set the end of the loop.

**A↔B** appears in the display.

The loop is played repeatedly.



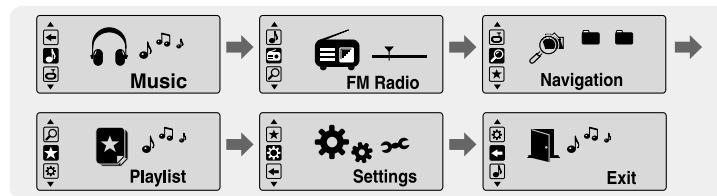
### Note

- Press the A↔B button briefly to cancel the loop.
- Loop Repeat is automatically released if you Speed Search with

Press and hold the "M" button to switch to MENU mode.

Use **-**, **+** to move and press the "M" button briefly to select the menu you want.

Press and hold the "M" button to exit the MENU mode.



- Music : To view the file currently playing.
- FM Radio : To listen to FM radio
- Navigation : To move to Navigation Mode and browse files and folders on the player.
- Playlist : To play back only the files you want
- Settings : To adjust the settings on the player. (refer to page 44)
- Exit : To exit MENU

### Note

- Menu mode will be cancelled if no buttons are pressed within 25 seconds
- Language in the menu screen can be changed in [Settings] → [Language] → [Menu].

You can easily search for files or switch modes using the Navigation function.

1 Press the "M" button to enter Navigation mode, or press and hold the "M" button to move to Menu and then select Navigation in Menu.

2 Select the file or folder that you want to play.

- **⏪**: To exit a folder and go back one level.
- **▶▶**: To view the contents of a folder.
- **←, →**: When moving to a file or folder in the same directory.
- **"M"**: Move to the next folder down. When there is no lower folder, the selected file will be designated as part of the playlist.

3 Press the **▶||** button.

- The selected file will be played.



## Note

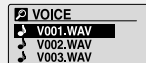
- Press and hold the "M" button in Navigation mode to exit the Navigation mode.

## Changing Modes

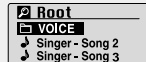
You can change the mode using the following method.

Ex) To change from the Voice mode to the Music mode

1 Press the "M" button in the Voice mode.



2 Use **⏪** to move to the upper folder.



3 Use **←, →** to move to the music file you want and press the **▶||** button.

- The selected file will be played and the mode is automatically changed to Music mode.



## Note


- To change to the FM mode, refer to "Menu Options".

## I Playing/Exiting Folder

### ▲ Playing Folder

1 Press the "M" button to move to the Navigation mode.

2 Use **-**, **+** to move to the folder you want and press the **▶||** button.


- When "  " appears, the files in the selected folder will be played.



### ▲ Exiting Folder Play

1 Press the "M" button during folder playback to move to the Navigation mode.

2 Use **-**, **+** to move to the file you want and press the **▶||** button.

- After folder play is released, "  " mark will appear and the selected file will be played.



## I Setting Playlist

- Select a file while in Navigation mode and press the "M" button.

- The selected file will be marked.
- To remove the file from the playlist, move to the marked file in Navigation mode and press the "M" button again.




## I Playing Playlist

1 Press and hold the A↔B button in music mode or select Playlist in Menu.

- The playlist you set will be displayed.

2 Move to the file you want to play and press the **▶||** button.

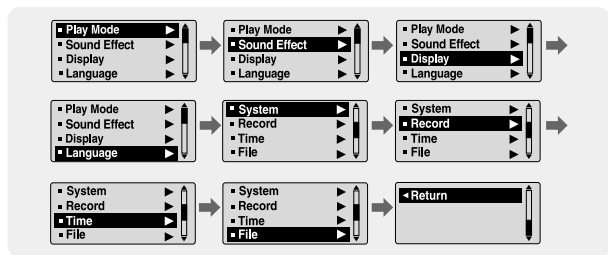
- "  " mark appears and the selected file will be played.



1 Select **Settings** in the MENU. (refer to “MENU Options”)

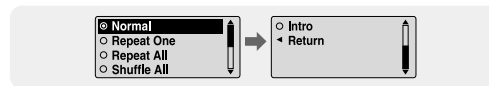
2 In Settings, use **-**, **+** to move to the function you want and press the “M” button to select.

- To move to a previous menu, use **◀◀** or select Return.



1 Press and hold the “M” button.  
Select Settings → Play Mode.

2 In Play mode, use **-**, **+** to move to the mode you want and press the “M” button to select.



- Normal: To play all the files in order one time.
- Repeat One: To repeat one file.
- Repeat All: To repeat all files.
- Shuffle All: To play files at random.
- Intro: To play the first few seconds of a music file. (refer to page 57)
- Return: To move to a previous menu

# Setting the EQ mode

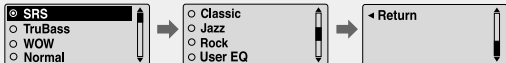
- 1 Press and hold the “M” button.  
Select Settings → Sound Effect.

- 2 In **Sound Effect**, use **←, +** to move to the sound mode you want and press the “M” button.



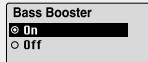
## Preset EQ

- Use **←, +** to move to the sound mode you want and then press the “M” button.
- **SRS** → **TruBass** → **WOW** → **Normal** → **Classic** → **Jazz** → **Rock** → **User EQ**
- Select User EQ Set to set the EQ as desired.



## Bass Booster

- Use **←, +** to select Bass Booster On or Off and then press the “M” button.
- Bass Booster function operates only when you select Normal, Classic, Jazz or Rock in the Preset EQ menu.
- **On**: When the music is played back, the bass is boosted.
- **Off**: Bass boost function is off.



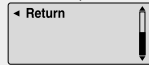
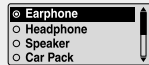
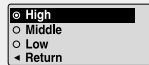
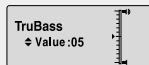
# Setting the EQ mode

## WOW Set

- Use **←, +** to select the SRS function you want and then press the “M” button.
- The SRS function is applied only when you select SRS, TruBass or WOW in the Preset EQ.
- **SRS** : You will hear 3D Stereo sound.  
Use **←, +** to adjust SRS from 0 to 10.
- **TruBass** : This is a bass boost feature that adds fullness to the sound.  
Use **←, +** to adjust TruBass from 0 to 10.
- **Focus** : You can enjoy clearer tone from the High, Middle and Low frequencies during playback.  
Use **←, +** to set Focus and then press the “M” button.
- **Optimum** : Optimize the SRS function according to the device connected to the earphone jack of the player.  
Use **←, +** to move to the connected device and then press the “M” button.

**High** → **Middle** → **Low**

**Earphone** → **Headphone** → **Speaker** → **Car Pack**

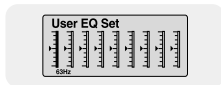




## User EQ Set

- If User EQ is selected, the EQ can be set to your preference.
- Use **◀▶** to move to the right or left to select the desired EQ, and use **-**, **+** to adjust the level.

Press the “M” button after completing the setting.



## Note

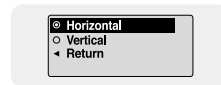
- **SRS WOW MD** is a trademark of SRS Labs, Inc. WOW technology is incorporated under license from SRS labs, Inc..
- Please adjust the volume to a suitable level, as the volume may increase in the SRS setting.
- This unit supports sampling frequencies of 32KHz, 44.1KHz or 48KHz.

Press and hold the “M” button. Select Settings → Display.

## Scroll

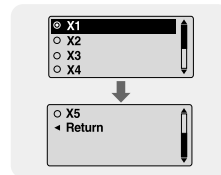
### [ Type ]

- Use **-**, **+** to select one of the scroll types below.
- **Horizontal** : Music title moves horizontally.
- **Vertical** : Music title moves vertically.



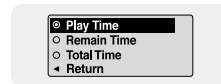
### [ Speed ]

- Use **-**, **+** to set the scroll speed from X1 to X5 to adjust the speed of the track title movement.



## Display Time


- Use **-**, **+** to select the display time.
- **Play Time**: Current playback time is displayed.
- **Remain Time**: Remaining playback time of the current file is displayed.
- **Total Time**: Total playback time is displayed.



Press and hold the “M” button. Select Settings → Display.

## Backlight

### [ Jog ]

- Use **-**, **+** to set the  Light-On time from Off to 60 seconds.
- When set to On, the Light stays on continuously.



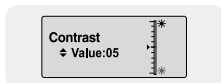
### [ LCD ]

- Use **-**, **+** to set the LCD Light-Off time from Off to 60 seconds
- When set to On, the Light stays on continuously.



## Contrast

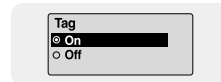
- Use **-**, **+** to set the contrast from 0 to 10 to adjust the brightness of the screen.



Press and hold the “M” button. Select Settings → Display.

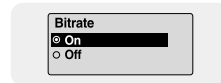
## Tag

- Use **-**, **+** to select Tag On or Off.
- **On**: Displays the Tag information if contained on the music file. Displays the file name if the music file has no Tag information.
- **Off**: Displays the name of the music file.



## Bitrate

- Use **-**, **+** to select Bitrate On or Off.
- When the Bitrate is on, it shows the bitrate of the file currently playing.
- **On**: Bit rate is displayed at the top of the screen.
- **Off**: The total number of tracks is displayed at the top of the screen.



Press and hold the “M” button. Select Settings → Language.

## Menu

- Use **-**, **+** to select the display menu language.
- Chinese(S) → Chinese(T) → Dutch → English → French → German → Hungarian → Italian → Japanese → Korean → Polish → Portuguese → Russian → Spanish → Swedish



## ID3-Tag

- Use **-**, **+** to select the Tag information display language.
- Afrikaans → Basque → Catalan → Chinese(S) → Chinese(T) → Czech → Danish → Dutch → English → Estonian → Finnish → French → German → Greek → Hrvatski → Hungarian → Icelandic → Italian → Japanese → Korean → Norwegian → Polish → Portuguese → Romany → Russian → Slovak → Slovene → Spanish → Swedish → Turkish → Vietnamese → Return



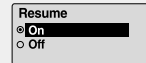
## Note

- What is an ID3 Tag ?  
This is what is attached to an MP3 to carry information relevant to the file, such as the title, artist, album, year, genre and a comment field.
- Supported languages can be changed or added.

Press and hold the “M” button. Select Settings → System.

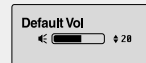
## Resume

- Use **-**, **+** to select Resume On or Off.
- **On**: Playback will resume from the point it was previously stopped.
- **Off**: Playback will resume from the beginning of the file/track that was playing when stopped.



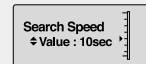
## Default vol

- Use **-**, **+** to set the default volume from 0 to 30(Max).
- If the power is turned on again after having adjusted the volume to a level above the default volume(for example: 20) music is played at the default volume level.
- If the power is turned on again after having adjusted the volume at or below the default volume (for example: 20 or lower), the music is replayed at the previous volume.



## Search Speed

- Use **-**, **+** to set the Search Speed to skip 1 second to 1 minute sections within a song.



## Note

- For a VBR or Ogg file, the search speed may not be uniform.

Press and hold the “M” button. Select Settings → System.

## Skip Interval

- Use **-**, **+** to set the skip interval from 5sec to 10min.
- Skip Interval determines the interval to be skipped when you press the **⏮**, **⏭** button in Music mode.
- If you set the Skip Interval to 1 Track, then press the **⏮**, **⏭** button, the previous or next track will be selected.

### Note

- For a VBR or Ogg file, the skip interval time may not be exact.



Skip Interval  
↕ Value : 10sec

## FM Region

- Use **-**, **+** to select FM Region.
- **Other Country** : Search FM frequencies between 87.5MHz to 108.00MHz in the increase of 50 KHz.
- **Korea/US** : Search FM frequencies between 87.5MHz to 108.0MHz in the increase of 100 KHz.
- **Japan** : Search FM frequencies between 76.0MHz to 108.0MHz in the increase of 100 KHz.



⊙ Other Country  
○ Korea/US  
○ Japan  
◀ Return

## FM Search Level

- Use **-**, **+** to select FM Search Level.
- The higher the FM Tuner Sensitivity, the more frequencies it can receive .
- **High** → **Middle** → **Low**



⊙ High  
○ Middle  
○ Low  
◀ Return

Press and hold the “M” button. Select Settings → System.

## Default Set

- Use **-**, **+** to select Default Set Yes or No.
- **Yes** : All settings selected will be returned to the original factory settings.
- **No** : All settings selected will remain as they are.



Default Set

⊙ Yes  
○ No

## Beep

- Use **-**, **+** to select Beep On or Off.
- **On**: Beep sounds whenever you press the button.
- **Off**: No beep sounds when you press the button.



Beep

⊙ On  
○ Off

## About

- If you select About, you can check the player's software version information, total number of tracks and remaining capacity.



Ver. 1.000  
010 Tracks  
051MB Free

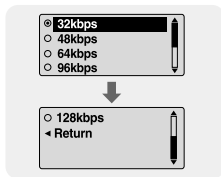
### Note

- Go to [samsung.com](http://samsung.com) for software updates.

Press and hold the “M” button. Select Settings → Record.

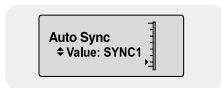
## Bit Rate

- Use **−**, **+** to set the recording bit rate.
- When recording music into an MP3 file, you can select one of the following bit rates: 32Kbps, 48Kbps, 64Kbps, 96Kbps and 128Kbps.



## Auto Sync

- Use **−**, **+** to set the Auto Sync Time from 1 to 5 seconds.
- AutoSync Time is a function for separating and saving MP3 files when there is no sound for a set time during MP3 recording.
- In SYNC 1 setting, recording stops and it moves to Music Mode when there is no sound for over 1 second during recording.
- If AutoSync Time is set to Off, recording keeps going even if there is no sound, and then it is saved as one file.



Press and hold the “M” button. Select Settings → Time.

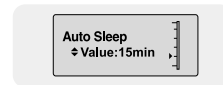
## Auto Off Time

- Use **−**, **+** to set the Power-Off time from 0 to 3 minutes.
- If no button is pressed after play stops, the player will automatically turn off after the time you set.
- When set to Off, the function is disabled.



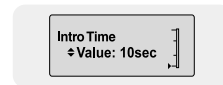
## Auto Sleep

- Use **−**, **+** to set the Sleep time from 10 to 120 minutes.
- The player will automatically turn off after the time you set.
- When set to Off, the function is disabled.



## Intro Time

- Use **−**, **+** to set the Intro time to 10, 20, 30, or 60 seconds.
- When you select the Intro function(Press and hold the “M” button. Select Settings → Play mode → Intro), the beginning of all files will be played back for the seconds you set.



Press and hold the “M” button. Select Settings → File.

## Deleting a File

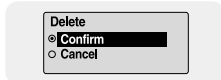
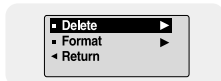
**1** Press and hold the “M” button.

Select Settings → File → Delete.

**2** Use **←, +** to move to the file you want to delete and then press the “M” button.

**3** Use **←, +** to move to Confirm and then press the “M” button.

- The selected file will be deleted.



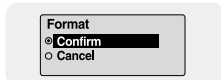
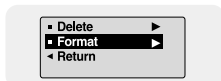
## Formatting the Player

**1** Press and hold the “M” button.

Select Settings → File → Format.

**2** Use **←, +** to move to Confirm and then press the “M” button.

- The player will be formatted and all files will be erased.



### Note

- All files will be deleted when formatting the built-in memory.

In order to upgrade firmware, you must first install the USB driver from the Installation CD if you have not done so already. The firmware upgrade utility is installed automatically with the USB driver.

**1** Connect to <http://www.samsung.com>, select [SUPPORT] → [DOWNLOAD CENTER] and then select your product.

**2** When the product page appears, select [Firmware] below the model name to download the latest firmware.

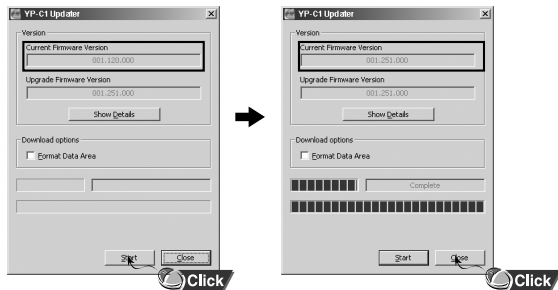
**3** Uncompress the downloaded file in a folder.

**4** Run Setup.exe and follow the instructions on the screen for installation.

- If previous version of firmware updater has been installed on your PC, overwrite the firmware files (bootmanager.sb,resource.bin,StmpSys.sb,UsbMsc.sb) in "C:\Program Files\Samsung\YP-C1" folder.

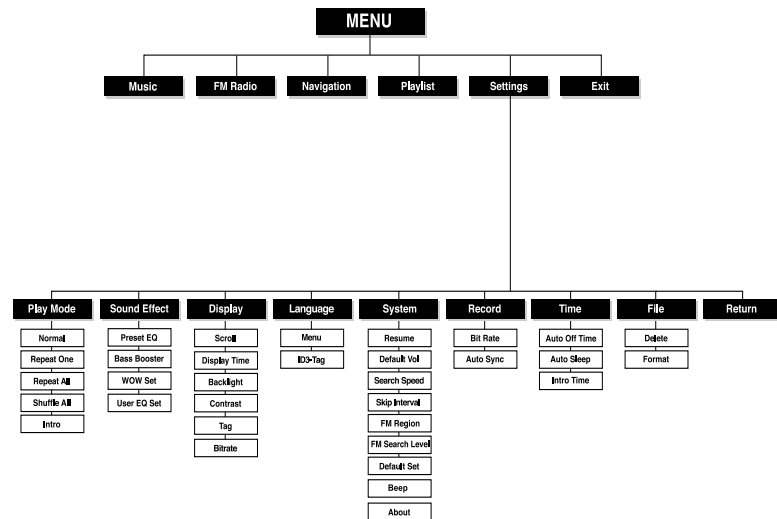
**5** Double-click YP-C1 Updater icon on the Desktop.

- 6 Connect the YP-C1 to your PC.
- 7 Check the current version and click the [Start] button of the Firmware Updater program to upgrade the Firmware.
  - If you select "Format data area" and start the update, all the data saved in YP-C1 will be deleted. Please backup your important data on your PC. If you do not want your data to be deleted, do not select "Format data area".
- 8 Confirm the version of the current firmware.
- 9 Click the [Close] button.



## Note

- If you experience any problems while upgrading firmware, press and hold the Play button while connecting the USB cable to the player and your PC, then repeat steps 5-9.



- Use the "M" button to access the menu.
- Use the **←**, **+**, **⏮**, **⏭** buttons to navigate.

## The software doesn't function properly

- Refer to the System Requirements

---

## The player does not work and the LCD displays nothing.

- Check the battery capacity
- Check to see if the battery is inserted to the right poles ( + , - )
- After connecting it to PC, execute YP-C1 Updater in the desktop to update the product.

---

## In PLAY mode, music is not played after pressing the ►|| button

- Check to see if MP3 or WMA files are saved in the built-in memory.
- Check to see if the HOLD button is locked.

---

## Files cannot be downloaded.

- Check to see if the driver is installed correctly in the computer.
- Check the connection between the player and PC.
- Check and/or replace the battery, turn on the player's power.
- Operating system limits the number of files you can save.  
Please save your music files by creating a subfolder.
- Check if the memory is full.

---

## Backlight does not work.

- Check the backlight setup.
- When the battery power is low, the backlight will go out.

---

## The buttons do not work.

- Check setting of Hold switch.
- Remove the battery once and then insert it again.

## The player keeps being turned off.

- In Stop mode, the power is automatically turned off after ten seconds (changes depending on settings).
- Check to see if there are files saved in it.

---

## Something's wrong with play time displayed during Play mode.

- Check to see if a VBR file is playing.

---

## LCD window is dark

- Check Contrast

---

## The file name is not displayed correctly.

- Move to [Settings] → [Language] → [ID3-Tag] in the Menu and then change the language setting.

---

## There is a file saved in the player, but "No File" appears in the screen.

- After checking whether the folder is played, use the Navigation function to change the folder.
- After connecting it to PC, execute YP-C1 Updater in the desktop to update the product.

---

## I cannot properly connect it to PC.

- Win98 : Try to connect again after installing the driver.
- WinME : Remove the driver program and press the Start in the desktop to execute Windows Update. After selecting important update and service pack, execute update all.
- Win2000/XP : Try to connect it again after rebooting PC.



<b>Model</b>	YP-C1
<b>Built-in Memory capacity</b>	128MB(YP-C1 H), 256MB(YP-C1 V), 512MB(YP-C1 X), 1GB(YP-C1 Z)
<b>Voltage</b>	1.5V X 1 (AA/LR6 size alkaline battery)
<b>Playing time</b>	lasts up to 42hours (Alkaline battery, MP3 128Kbps, Vol level 20)
<b>Dimensions/Weight</b>	1.02" X 2.8" X 1.02" / 1.2 oz (without battery)
<b>Case</b>	Plastic
<b>Noise Ratio</b>	85dB with A FILTER
<b>Earphones Jack Output Power</b>	10mW/CH (16Ω)
<b>Output Frequency Range</b>	20Hz~20KHz
<b>Operating Temperature Range</b>	-5 ~ +35°C(23~95°F)
<b>FM Frequency</b>	87.50 ~ 108.00 MHz
<b>FM Signal to Noise Ratio</b>	60dB
<b>FM T.H.D</b>	1%
<b>FM Useable Sensitivity</b>	10dB
<b>File Support</b>	MPEG1/2/2.5 Layer3(8Kbps ~ 320Kbps, 8KHz ~ 48KHz) WMA, Audio ASF (48Kbps ~ 192Kbps, 8KHz ~ 48KHz), Ogg

The product unit accompanying this user manual is licensed under certain intellectual property rights of certain third parties. In particular, this product is licensed under the following US patents : 5,991,715, 5,740,317, 4,972,484, 5,214,678, 5,323,396, 5,539,829, 5,606,618, 5,530,655, 5,777,992, 6,289,308, 5,610,985, 5,481,643, 5,544,247, 5,960,037, 6,023,490, 5,878,080, and under US Published Patent Application No. 2001-44713-A1.

This license is limited to private non-commercial use by end-user consumers for licensed contents. No rights are granted for commercial use. The license does not cover any product unit other than this product unit and the license does not extend to any unlicensed product unit or process conforming to ISO/IEC 11172-3 or ISO/IEC 13818-3 used or sold in combination with this product unit. The license only covers the use of this product unit to encode and/or decode audio files conforming to the ISO/IEC 11172-3 or ISO/IEC 13818-3. No rights are granted under this license for product features or functions that do not conform to the ISO/IEC 11172-3 or ISO/IEC 13818-3.

## FCC

This device complies with part 15 of the FCC Rules. Operation is subject to the following two conditions:

(1) This device may not cause harmful interference, and (2) this device must accept any interference received, including interference that may cause undesired operation.

**Caution:** Any changes or modifications in construction of this device which are not expressly approved by the party responsible for compliance could void the user's authority to operate the equipment

**Note:** This equipment has been tested and found to comply with the limits for a Class B digital device, pursuant to part 15 of the FCC Rules. These limits are designed to provide reasonable protection against harmful interference in a residential installation. This equipment generates, uses and can radiate radio frequency energy and, if not installed and used in accordance with the instructions, may cause harmful interference to radio communications. However, there is no guarantee that interference will not occur in a particular installation.

If this equipment does cause harmful interference to radio or television reception, which can be determined by turning the equipment off and on, the user is encouraged to try to correct the interference by one or more of the following measures:

- ◆ Reorient or relocate the receiving antenna.
- ◆ Increase the separation between the equipment and receiver.
- ◆ Connect the equipment to an outlet on a circuit different from that to which the receiver is connected.
- ◆ Consult the dealer or an experienced radio/TV technician for help.

## FCC

Any changes or modifications not expressly approved by the grantee of this device could void the user's authority to operate the device.

## Compliance

This product conforms to the following Council Directive:

- ◆ Directive 89/336/EEC, 92/31/EEC(EMC)

## Declaration of Conformity

Name: Samsung Electronics Co., Ltd  
Address: 416, Maetan-3Dong, Paldal-Gu, Suwon City, Kyungki-Do, Korea 442-742  
declares under its sole responsibility that the product  
Trade Name: Samsung Electronics Co., Ltd  
Model Number: YP-C1  
has been tested according to the FCC/CISPR22/95 requirements for Class B devices and found compliant with the following standards

EMI/EMC: AnSI C63.4 1992, FCC Part 15 Subpart B

This device complies with part 15 of the FCC Rules.

Operation is subject to the following two conditions:

- 1.This device may not cause harmful interference, and
- 2.This device must accept any interference received, including interference that may cause undesirable operation.

Party Responsible for Product Compliance

Samsung Electronics America  
QA Lab.  
3351 Michelson Dr. Suite #290  
Irvine, CA92612

**Samsung warrants this product as free of defects in material, design and workmanship for a period of twelve(12) months from the original date of purchase.**

If during the period of warranty this product proves defective under normal use and service, you should return the product to the retailer from whom it was originally purchased. The liability of Samsung and its appointed maintenance company is limited to the cost of repair and/or replacement of the unit under warranty.

Return of the product for defective reasons should be to the original purchaser; however, Samsung Authorized Dealers and Authorized Service Centers will comply with the warranty on the terms issued to purchasers in the country concerned. For further information relating to the Authorized Service Centers contact:  
1-800-SAMSUNG (1-800-726-7864)  
www.samsung.com

## WARRANTY CONDITIONS:

- 1.The warranty is only valid when the warranty card is properly completed, and upon presentation of the proof of purchase consisting of original invoice or sales slip confirmation, indicating the date of purchase, dealer's name, model, serial No. and product number. Samsung reserves the right to refuse warranty service if this information has been removed or changed after the original purchase of the product from the dealer.
- 2.Samsung's obligations are to the repair of the defective part, and at its discretion, replacement of the product (service exchange unit).
- 3.Warranty repairs must be carried out by an Authorized Samsung Dealer/Service Center. No reimbursement will be made for repairs carried out by non Samsung Centers, and warranty coverage will not be valid for any repairs or damage caused by such repairs.
- 4.Repair or replacement under the terms of this warranty does not give right to extension to or a new starting of the period of warranty. Repair or direct replacement under the terms of this warranty may be fulfilled with functionally equivalent service exchange units.

5. The warranty is not applicable in cases other than defects in material, design and workmanship. The warranty does not cover the following:

- ◆ Periodic checks, maintenance, repair and replacement of parts due to normal wear and tear.
- ◆ Abuse or misuse, including but not solely limited to the failure to use this product for its normal purposed or in accordance with Samsung's instructions usage and maintenance.
- ◆ Use of the product in conjunction with accessories not approved by Samsung for use with this product.
- ◆ Failure of the product arising from incorrect installation or use not consistent with technical or safety standards in current force, or failure to comply with product manual instructions.
- ◆ Accidents, Acts of God or any cause beyond the control of Samsung caused by lightning, water, fire, public disturbances and improper ventilation.

◆ Unauthorized modifications carried out for the product to comply with local or national technical standards in countries for which the Samsung product was not originally designed.

◆ Repairs performed by non-authorized service centers such as opening of the product by a non-authorized person.

◆ The model, serial No. and product number on the product has been altered, deleted, removed or made illegible.

6. This warranty does not affect the consumer's statutory rights nor the consumers rights against the dealer from their purchase/sales agreement.

THERE ARE NO EXPRESS WARRANTIES OTHER THAN THOSE LISTED AND DESCRIBED ABOVE, AND NO WARRANTIES WHETHER EXPRESS OR IMPLIED, INCLUDING, BUT NOT LIMITED TO, ANY IMPLIED WARRANTIES OF MERCHANTABILITY OR FITNESS FOR A PARTICULAR PURPOSE, SHALL APPLY AFTER THE EXPRESS WARRANTY PERIODS STATED ABOVE, AND NO OTHER EXPRESS WARRANTY OR GUARANTY GIVEN BY ANY PERSON, FIRM OR CORPORATION WITH RESPECT TO THIS PRODUCT SHALL BE BINDING ON SAMSUNG. SAMSUNG SHALL NOT BE LIABLE FOR LOSS OF REVENUE OR PROFITS, FAILURE TO REALIZE SAVINGS OR OTHER BENEFITS, OR ANY OTHER SPECIAL, INCIDENTAL OR CONSEQUENTIAL DAMAGES CAUSED BY THE USE, MISUSE OR INABILITY TO USE THIS PRODUCT, REGARDLESS OF THE LEGAL THEORY ON WHICH THE CLAIM IS BASED, AND EVEN IF SAMSUNG HAS BEEN ADVISED OF THE POSSIBILITY OF SUCH DAMAGES. NOR SHALL RECOVERY OF ANY KIND AGAINST SAMSUNG BE GREATER IN AMOUNT THAN THE PURCHASE PRICE OF THE PRODUCT SOLD BY SAMSUNG AND CAUSING THE ALLEGED DAMAGE. WITHOUT LIMITING THE FOREGOING, PURCHASER

ASSUMES ALL RISK AND LIABILITY FOR LOSS, DAMAGE OR INJURY TO PURCHASER AND PURCHASER'S PROPERTY AND TO OTHERS AND THEIR PROPERTY ARISING OUT OF THE USE, MISUSE OR INABILITY TO USE THIS PRODUCT SOLD BY SAMSUNG NOT CAUSED DIRECTLY BY THE NEGLIGENCE OF SAMSUNG. THIS LIMITED WARRANTY SHALL NOT EXTEND TO ANYONE OTHER THAN THE ORIGINAL PURCHASER OF THIS PRODUCT, IS NONTRANSFERABLE AND STATES YOUR EXCLUSIVE REMEDY.

Some states do not allow limitations on how long an implied warranty lasts, or the exclusion or limitation of incidental or consequential damages, so the above limitations or exclusions may not apply to you. This warranty gives you specific legal rights, and you may also have other rights which vary from state to state. This product is for personal use only, and is only for use in compliance with the limitations of copyright and other laws.

To obtain warranty service, please contact SAMSUNG at:  
Samsung Electronics America, Inc.  
400 Valley Road, Suite 201 Mount Arlington, NJ 07856  
1-800-SAMSUNG (1-800-726-7864)  
[www.samsung.com](http://www.samsung.com) 081299

## Free Manuals Download Website

<http://myh66.com>

<http://usermanuals.us>

<http://www.somanuals.com>

<http://www.4manuals.cc>

<http://www.manual-lib.com>

<http://www.404manual.com>

<http://www.luxmanual.com>

<http://aubethermostatmanual.com>

Golf course search by state

<http://golfingnear.com>

Email search by domain

<http://emailbydomain.com>

Auto manuals search

<http://auto.somanuals.com>

TV manuals search

<http://tv.somanuals.com>