

YP-R1

# MP3 Player user manual

imagine the possibilities

Thank you for purchasing this Samsung product. To receive more complete service, please register your product at



[www.samsung.com/register](http://www.samsung.com/register)



## Using this manual

- Some of the contents in this manual may differ from your MP3 player depending on the firmware installed. Some of the contents may be changed without prior notice.
- To view the special features of your MP3 player, see "Special features of your MP3 player" on page 4.
- To view troubleshooting, see "Troubleshooting" on page 80.

## Icons used in this manual

Icon	Description
 <b>Note</b>	Notes, usage tips, or additional information
 <b>Caution</b>	Safety warnings and precautions
< >	Menu names or text on the screen ; for example: <Yes>

# Safety information

This manual describes how to properly use your new MP3 player. Read it carefully to avoid damaging the player and injuring yourself. Pay particular attention to the following serious warnings.

## PROTECT YOURSELF



CAUTION

- Do not disassemble, repair, or modify this product on your own.



CAUTION

- Do not get the product wet or drop it in water. If the product gets wet, do not switch it on because you could get an electric shock. Instead, contact a Samsung Customer Service Center at 1-800-SAMSUNG.
- Do not use the product during a thunderstorm, as it may cause malfunction or a risk of electric shock.



CAUTION

- Do not use the earphones while you are driving a bicycle, automobile or motorcycle.  
It can cause a serious accident, and furthermore, is prohibited by law in some areas.  
Using the earphones while walking or jogging on a road, in particular, on a crosswalk can lead to a serious accident.
- For your safety, make sure the earphone cable does not get in the way of your arm or other surrounding objects while you are taking exercise or a walk.



WARNING

- Do not place the product in damp, dusty, or sooty areas because these environments could lead to fire or electric shock.



WARNING

- Do not use the product if the screen is cracked or broken. Broken glass or acrylic could cause injury to your hand or face. Bring the product to a Samsung service center to replace the screen. Damage caused by careless handling will void the warranty.

### PROTECT YOURSELF



WARNING

- Using earphones or headphones for an extended time may cause serious damage to your hearing. If you are exposed to sound louder than 85db for an extended time, you may adversely affect your hearing. The louder the sound is, the more seriously damaged your hearing may be (an ordinary conversation is between 50 to 60 db and road noise is approximately 80 db). You are strongly advised to set the volume level to medium (the medium level is usually less than 2/3 of the maximum).
- If you feel a ringing in the ear(s), lower the volume or stop using the earphones or headphones.



WARNING

- Battery shall not be exposed to excessive heat such as sunshine, fire or the like.

### PROTECT YOUR MP3 PLAYER



WARNING

- Do not leave the player in temperatures above 95° F (35° C), such as a sauna or a parked car.
- Do not cause excessive impact on the player by dropping it.
- Do not place heavy objects on top of the player.
- Prevent any foreign particles or dust from entering into the product.
- Do not place the product near magnetic objects.



CAUTION

- Be sure to backup important data. Samsung is not responsible for data loss.
- Use only accessories provided by or approved by Samsung.



CAUTION

- Do not spray water on the product. Never clean the product with chemical substances such as benzene or thinner, as it may cause fire, electric shock or deteriorate the surface.



- Failure to follow these instructions may lead to physical injuries or damage to the player.



- When printing this user manual, we recommend that you print in color and check "Fit to Page" in the print option for better viewing.

# SAFETY INFORMATION

## FCC

This device complies with part 15 of the FCC Rules.

Operation is subject to the following two conditions:

- (1) This device may not cause harmful interference, and
- (2) This device must accept any interference received, including interference that may cause undesired operation.

**Caution:** Any changes or modifications in construction of this device which are not expressly approved by the party responsible for compliance could void the user's authority to operate the equipment.

**Note:** This equipment has been tested and found to comply with the limits for a Class B digital device, pursuant to part 15 of the FCC Rules. These limits are designed to provide reasonable protection against harmful interference in a residential installation. This equipment generates, uses and can radiate radio frequency energy and, if not installed and used in accordance with the instructions, may cause harmful interference to radio communications. However, there is no guarantee that interference will not occur in a particular installation.

If this equipment does cause harmful interference to radio or television reception, which can be determined by turning the equipment off and on, the user is encouraged to try to correct the interference by one or more of the following measures:

- Reorient or relocate the receiving antenna.
- Increase the separation between the equipment and receiver.
- Connect the equipment to an outlet on a circuit different from that to which the receiver is connected.
- Consult the dealer or an experienced radio/TV technician for help.

## Declaration of Conformity

We, Samsung Electronics Co.,Ltd., declare under our sole responsibility that the product, Trade name Samsung & Model name YP-R1, has been tested according to the part 15 of the FCC Rules.

Party responsible for Product Compliance  
Samsung Electronics America QA Lab.  
18600 Broadwick Street, Rancho Dominguez, CA 90220

# Special features of your MP3 player



Listen to true three-dimensional sound with the Samsung Digital Natural Sound engine (DNSe™)



Be a cool DJ and mix music with your own beats in Beat DJ



Customize your main menu screen



Add your favorite widgets to the main menu screen



No more complicated buttons! Control your player with one simple touch



Listen to music with the mini player while viewing pictures or documents



Easily create Bluetooth connections with a single motion

## YP-R1

# ★ Contents



## 7 Use basic functions

---

- 8 What's included
- 9 Your MP3 player
- 10 Connect to a PC and charge the battery
- 12 Turn your player on and lock the touch screen
- 13 Use the touch screen
- 15 Use the main menu screens
- 16 Change the menu style
- 16 Select a wallpaper
- 17 Organize your favorite menus
- 19 Use widgets
- 19 Add widgets to a main menu screen
- 20 Widget list
- 22 Use the quick tray and menu tray
- 23 Use the mini player
- 24 Enter text
- 24 Enter text using the virtual keyboard
- 25 Enter text with the smart finger feature
- 26 Connect your player to a TV



## 27 Manage media files

---

- 28 Download media files
- 28 Supported file formats and PC requirements
- 29 Download files with EmoDio
- 30 Download files using your player as a removable disk
- 32 Search for files
- 33 Delete files



## 34 Play video and music

---

- 35 Video
- 35 Play video files
- 38 Use the video options
- 39 Music
- 39 Listen to music
- 43 Search for a music file
- 43 Create playlists
- 45 Use the music options
- 46 Beat DJ



## 49 Use additional applications

---

- 50 Pictures
  - 50 View pictures
  - 51 Use the picture menus
- 52 Texts
  - 52 View text files
  - 54 Use the text options
- 55 FM Radio
  - 55 Listen to the FM radio
  - 57 Save radio stations
  - 58 Use the FM radio options
- 59 Flash Player
- 60 Games
- 61 Bluetooth
  - 61 Find and register other Bluetooth-enabled devices
  - 62 Connect Bluetooth-enabled devices
  - 63 Use call functions (hands-free)
  - 65 Transfer files
  - 66 Use the Bluetooth options
  - 66 Information for using Bluetooth
- 68 Datacasts
- 69 Voice REC
- 70 [Download From Wwww.Somanuals.com](http://www.Somanuals.com). All Manuals Search And Download.



## 71 Customize settings

---

- 72 Settings
  - 73 Sound settings
  - 73 Display settings
  - 73 Language settings
  - 74 Time settings
  - 74 System settings



## 77 Appendix

---

- 78 Firmware upgrade
- 79 Maintenance of your player
- 80 Troubleshooting
- 82 Specifications
- 84 Warranty
- 86 License





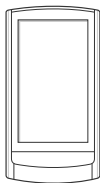
# Use basic functions

Learn to perform basic operations with your player.

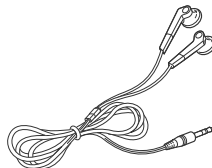
What's included .....	8
Your MP3 player .....	9
Connect to a PC and charge the battery.....	10
Turn your player on and lock the touch screen.....	12
Use the touch screen.....	13
Use the main menu screens .....	15
Use widgets .....	19
Use the quick tray and menu tray .....	22
Use the mini player.....	23
Enter text .....	24
Connect your player to a TV .....	26

# What's included

Check your product box for the following items:

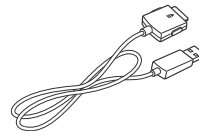


MP3 player



Earphones

GM59-01011A (Black)  
GM59-01011B (White)



USB cable

GM39-01002A



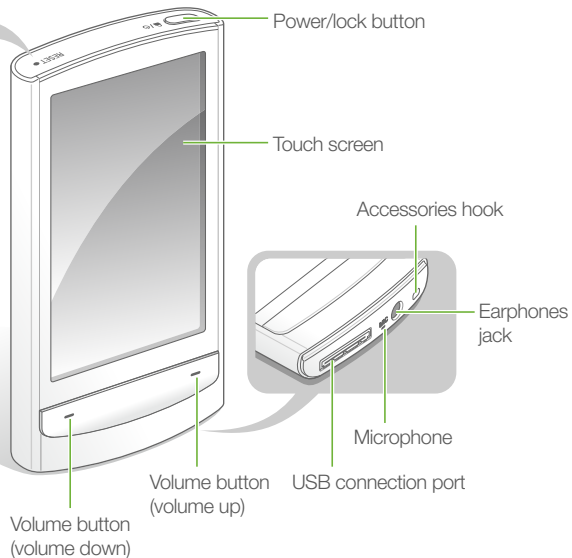
## Note

- The items supplied with your player may appear different from the illustrations in this manual.
- You can obtain additional accessories from your local Samsung dealer.

# Your MP3 player

## Reset hole

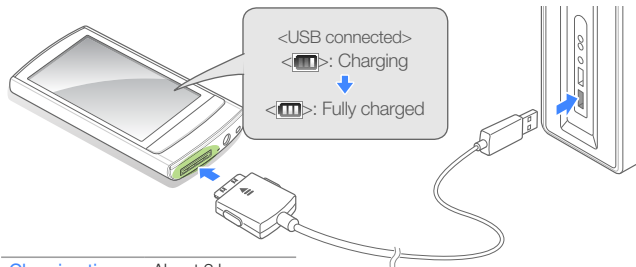
If your player is frozen or unresponsive, insert a pointed object (such as a toothpick or paper clip) into the reset hole. The system will be initialized.



# Connect to a PC and charge the battery

Connect your player to a PC and charge the battery before you use your player for the first time or when you have not used it for a long time.

- 1 Connect the wider end of the USB cable (with the triangle facing up) to the USB connection port at the bottom of your player.
- 2 Connect the thinner end of the USB cable to the USB port of a PC.



Charging time    About 3 hours

- 3 When the battery is fully charged, unplug the USB cable from your player and the PC.

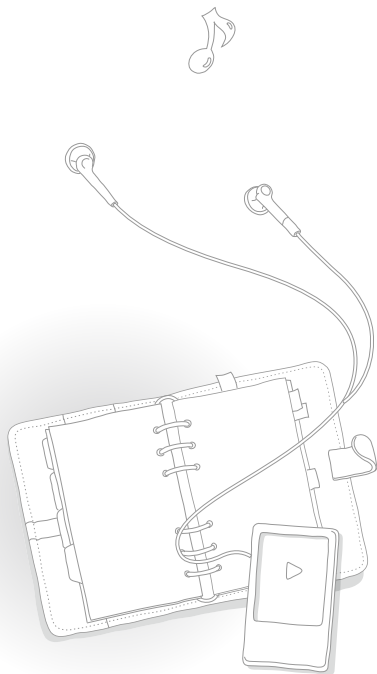
### About batteries

- Charge and store the battery at 41° F ~ 95° F (5° C ~ 35° C).
- Do not charge the battery for more than 12 hours or leave the battery fully discharged for a long time. Doing so may shorten the battery life.
- Depending on how you use your player, actual battery life may vary and may be shorter than specified.



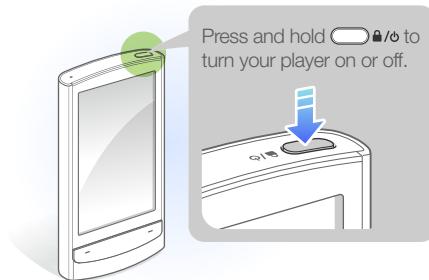
#### Note

- The charging time may differ depending on your PC's capabilities.
- If you want to charge the battery on your laptop, make sure that the laptop's battery is full or the laptop is plugged into a power source.
- The player can only be charged by connecting to your PC with the USB cable. Do not use a separate USB AC Adapter as it may not charge the battery or allow proper operation of the player.



# Turn your player on and lock the touch screen

## Turn your player on or off

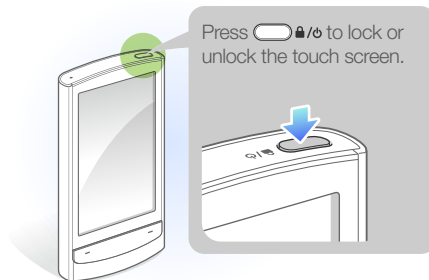


### Note


If you do not use your player for 5 minutes, it will automatically turn off.

## Lock or unlock the touch screen

Lock the touch screen to prevent any unwanted operations while listening to music or playing videos.



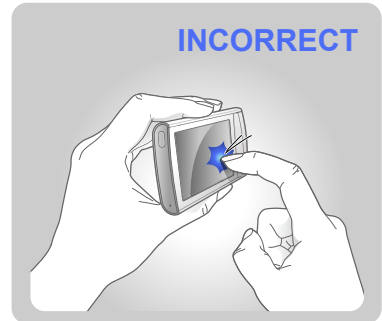
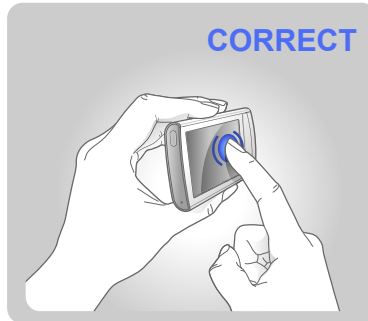
### Note

- When the touch screen is locked,  will appear at the top of the screen.
- You can also set your player to lock the touch screen and buttons. See page 75.

# Use the touch screen

Learn how to use the touch screen and browse or select items.

Your player's touch screen lets you easily select items or perform functions. Tap the touch screen using your fingertip.



## Caution

To avoid damaging the touch screen, do not press too hard with your fingertips or use pointed objects to touch the screen.

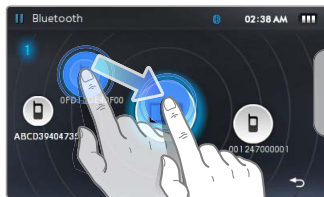
## Note

- Tap only one area of the touch screen at a time. Your player will not recognize your input when you tap two or more areas simultaneously.
- Keep the touch screen dry. Humidity and liquids may lower the recognition of the touch screen.
- For best results, do not use any protective films on the touch screen and do not allow accessories to cover the touch screen.
- The touch screen may not properly recognize inputs when you tap the screen with gloves, dirty fingers, fingernails, or sharp instruments such as ballpoint pens.

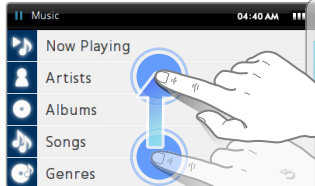
## Dragging

To move an item on the screen or browse items, tap and hold your finger on the screen and drag your finger.

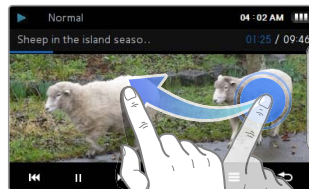
To move to the next screen or flip pages, quickly drag your finger in the desired direction.



Drag an item to a location you want



Drag from the bottom to the top to scroll up on the list



Quickly drag right to left to play the next file during playback

## Tapping

To select a menu or option, tap the screen once with your finger. You can also open the quick tray or menu tray by tapping the screen.

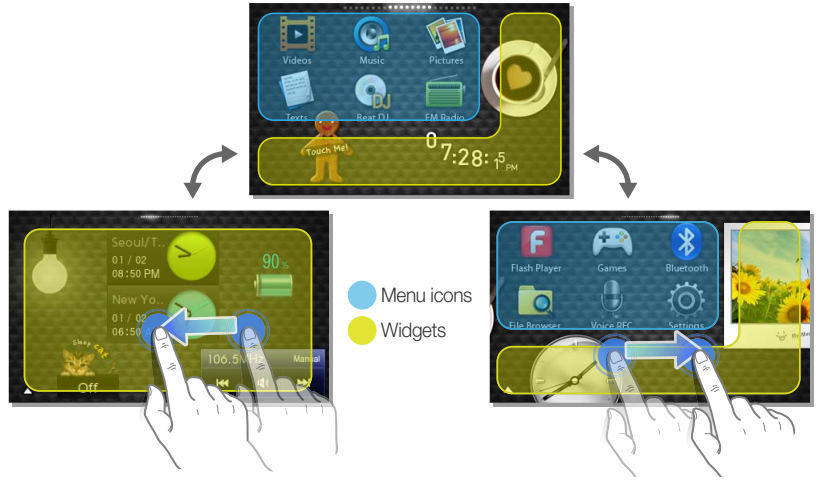





# Use the main menu screens

Learn to move between the main menu screens, change the menu style or wallpaper, and organize your favorite menus.

The main menu screens consist of menu icons and widget icons.



### Note

To return to a main menu screen while using a function, tap and hold  at the bottom of the screen.

## Change the menu style

- 1 In the main menu, tap ▲ at the bottom of the screen.
- 2 Tap <Style> from the menu tray.



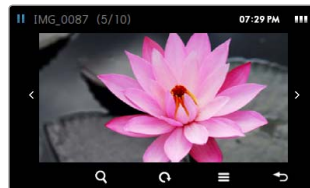
- 3 Tap < or > to select a style you want.



- 4 Tap <OK> to save the style.

## Select a wallpaper

- 1 In the main menu, tap and hold an empty space.
- 2 Tap an image from the file list.
- 3 Tap <OK> to save the wallpaper image.



## Organize your favorite menus

Your player has three main menu screens by default. You can add two more screens, and add menu icons that you frequently use to a menu screen or delete them from the menu screen.

- 1 In the main menu, tap ▲ at the bottom of the screen.
- 2 Tap <Icon> from the menu tray.



- 3 Add or delete menu icons from the menu list.
- 4 When you are finished, tap <OK>.

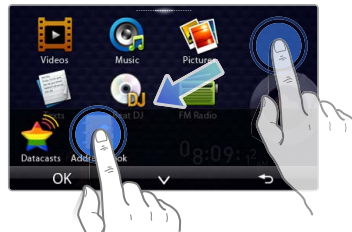
### Add a menu icon

Drag a menu icon from the menu list to a main menu screen.



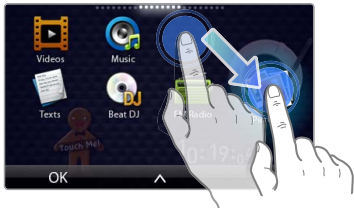
### Delete a menu icon

Drag a menu icon from a main menu screen to the menu list.



**Relocate a menu icon**

Tap <V> to close the menu list and position the menu icon anywhere on the screen.

**Note**

To move a menu icon to a new main menu screen, drag the icon to the edge of the screen.



# Use widgets

You can use functional and decorative widgets. Widgets are user friendly shortcuts to commonly used menus you can add to a main menu screen.


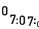

## Add widgets to a main menu screen




- 1 In the main menu, tap ▲ at the bottom of the screen.
- 2 Tap <Widget> from the menu tray.



- 3 Add or delete widgets from the widget list.
  - For adding or deleting widgets, see "Organize your favorite menus" on page 17.
  - For information about your widgets, see "Widget list" on page 20.
- 4 When you are finished, tap <OK>.

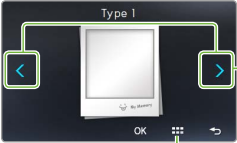

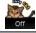



## Widget list

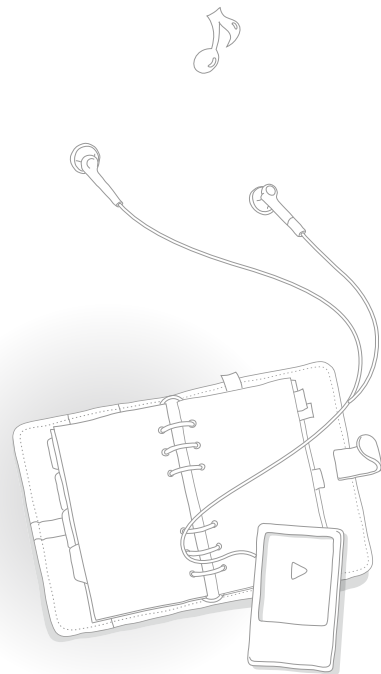
Widget	Function
 Analog clock/  Digital clock	<ul style="list-style-type: none"> <li>View the current time.</li> <li>Tap &gt; to set the current date. Drag up or down on each unit.</li> </ul>  <p>Drag up or down on each unit to set the current time.</p> <p>Tap to change the clock style</p>

Widget	Function
  Calendar	<ul style="list-style-type: none"> <li>View the calendar and scheduled events.</li> <li>Drag up or down to move by month. Drag left or right to move by year.</li> </ul>  <p>Tap to view scheduled events for that day</p> <p>Tap to change the calendar style</p> <p>Tap to delete all scheduled events</p>

### Note

To view scheduled events in the calendar, download Microsoft Outlook event files (.ics) from a PC. Event files must be saved in <File Browser> → <My Pack> → <Calendar>.

Widget	Function
 Picture frame	<p>View your pictures in a frame.</p>  <p>Tap &lt; or &gt; to change the frame style</p> <p>Tap to select a picture to display</p>
 Brightness	Adjust the brightness of the screen. See page 73.
 Sleep time	Set the sleep time. See page 74.
 Dual clock	View the current time in another country or city.
 Battery	Check the remaining battery.
 Mini player	Listen to music with the mini player.
 Decoration item	A cookie gradually crumbles.
 Decoration item	Flower petals flutter.
 Decoration item	A butterfly circles around a flower.
 Decoration item	A cup of coffee steams.

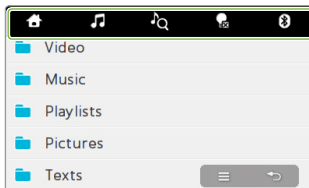


# Use the quick tray and menu tray

Tap the top of the screen to open the quick tray. Tap the empty space of the screen to open the menu tray.

## Quick tray

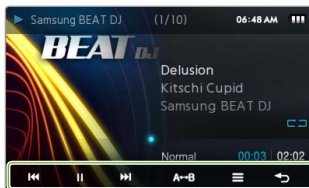
The quick tray provides shortcuts to other functions or allows you to return to a main menu screen.



Icon	Function
	Return to a main menu screen.
	Launch the mini player. See page 23.
	Rotate the screen 90° clockwise (to the right). This icon is available on the music playback screen.
	Search for music files. See page 43.
	Turn off the screen and lock the touch screen. See page 75.
	Connect the Bluetooth stereo headset your player was last connected to. If you connect your player to a Bluetooth-enabled device for the first time, see "Find and register other Bluetooth-enabled devices" on page 61.

## Menu tray


The menu tray displays options available in the current menu.

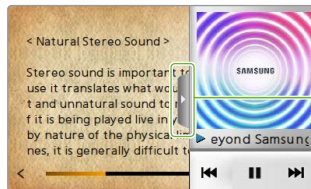










# Use the mini player

You can use the mini player to listen to and easily navigate music files while viewing pictures or text files.

- 1 Open the quick tray and tap .
- 2 Listen to music with the mini player.




Tap to close the player screen

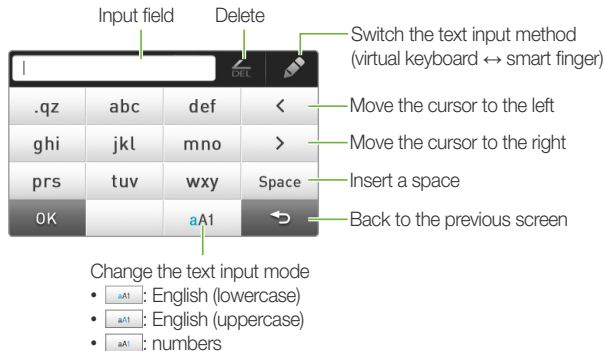
To	Do this
Skip to the previous file or the next file	Tap  or 
Search backward or forward in a file	Tap and hold  or 
Pause or resume playback	Tap  or 

# Enter text

Enter text using the virtual keyboard or with the smart finger feature.

## Enter text using the virtual keyboard

- 1 Tap an appropriate alphanumeric key until the character you want appears on the screen.
  - If the smart finger screen appears, tap  to switch to the virtual keyboard.



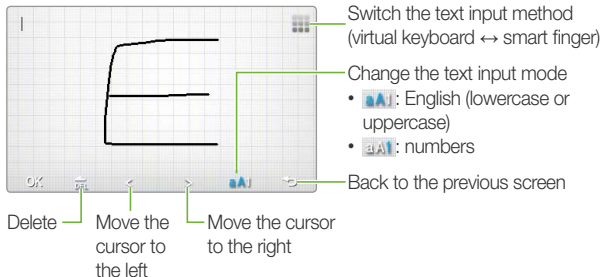
- 2 When you are finished, tap <OK>.

## Enter text with the smart finger feature

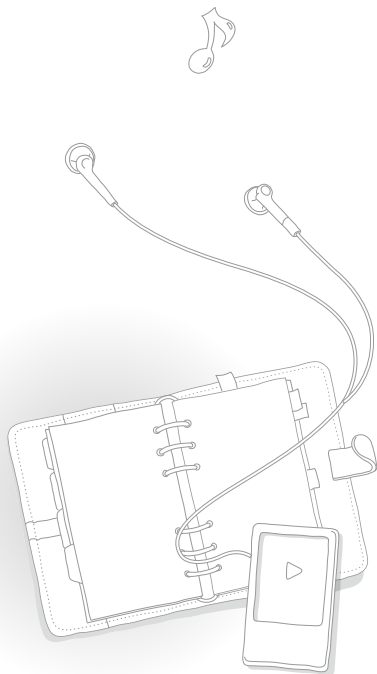
With the smart finger feature, you can write characters anywhere on the screen using your finger.

- 1 On the virtual keyboard, tap  to switch to the smart finger.
- 2 Change the text input mode.
- 3 Write each character anywhere on the screen.
  - Your handwriting is converted to text.

▼ When entering a keyword in the music search screen



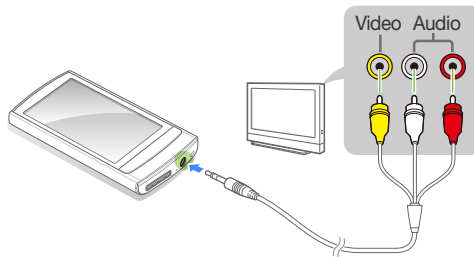
- 4 When you are finished, tap <OK>.





# Connect your player to a TV

You can connect your player to a TV with an optional TV-OUT cable and view multimedia files, such as pictures and videos, on the TV screen.

- 1 Connect your player to a TV using an optional TV-OUT cable.



- 2 Turn on your TV and switch the TV to the appropriate external input mode.
- 3 Turn on your player and view a picture or video.
- 4 Tap  on the playback screen.
- 5 Tap <TV Out> from the option list.
- 6 Tap <Yes> from the pop-up window.
  - The TV screen displays the picture or video you are viewing on your player.
- 7 Control playback using the menu tray of your player.
  - Tap  to end the connection with the TV.

## Note

- Some features of your player may not be available when your player is connected to a TV.
- Some TVs may not be compatible with your player.



# Manage media files

Download media files to your player, and search for or delete files stored in your player.

Download media files.....	28
Search for files.....	32
Delete files .....	33

# Download media files






Download media files from a PC to your player.

## Caution

To avoid damage to your player and corruption of your files, do not disconnect the USB cable while files are being transferred.

## Supported file formats and PC requirements

### Supported file formats

Menu	File formats
 Music	MP3, WMA, Ogg, AAC, FLAC, etc.
 Videos	AVI, WMV, etc.
 Picture	JPG, BMP, etc.
 Texts	TXT
 Flash Player	SWF

### Recommended PC requirements

<b>CPU</b>	Pentium 500 MHz or higher
<b>Operating System</b>	Windows XP Service Pack 2 or higher <ul style="list-style-type: none"> <li>• Windows Media Player 11.0 or higher</li> <li>• Resolution 1024 X 768 or higher</li> <li>• Internet Explorer 6.0 or higher</li> <li>• DirectX 9.0 or higher</li> </ul>
<b>Others</b>	

## Download files with EmoDio

You can easily download various media files with EmoDio.



### Note

- For information about installing EmoDio on a PC, refer to the Quick Start Guide supplied with your player.
- EmoDio will be regularly upgraded for peak performance. Some features of EmoDio may change without prior notice.

### 1 Connect your player to a PC using the USB cable.

- See page 10 to connect the player to your PC.
- When the player is connected to your PC, EmoDio launches automatically on your PC.

### 2 Click <My PC> on the main screen of EmoDio.

### 3 Click <Add Folder> or <Add File> at the bottom of the screen.

### 4 Select a folder or file you want.

- The list of the files stored in your PC appears.

### 5 Select a file you want and click .

- The selected file is copied to your player.




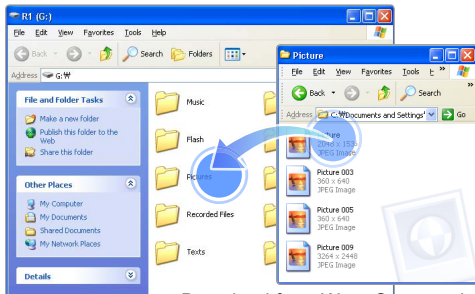
### Note

- You cannot use your player when connected to a PC.
- If you connect your player to a PC when the player's battery is low, the battery will be charged for a few minutes before your player will be connected to the PC.
- If you connect your player to a PC via a USB hub, the PC may not recognize your player. Connect your player directly into the USB port of a PC.
- When you format your player on a PC, use the FAT32 system. In Windows Vista, click <Restore device defaults> and then format your player.
- Music recognition technology and related data are provided by Gracenote® and Gracenote CDDB® Music Recognition Service<sup>SM</sup>.
- CDDB is a registered trademark of Gracenote. The Gracenote logo and logotype, the Gracenote CDDB logo and logotype, and the "Powered by Gracenote CDDB" logo are trademarks of Gracenote. Music Recognition Service and MRS are service marks of Gracenote.

## Download files using your player as a removable disk

If the USB connection is set to <MSC>, a PC will recognize your player as a removable disk when you connect your player to the PC.

- 1 To change the USB connection mode to <MSC>, in the main menu, tap  → <System> → <PC Connection> → <MSC>.
- 2 Connect your player to a PC using the USB cable.
- 3 On your PC, open <My Computer> and then the <R1> folder.
- 4 Select a folder you want.
- 5 Copy files from the PC to your player.



### Note

- The order of files on your PC will differ from the order of files in your player.
- Your player restricts playback of files protected by a DRM (Digital Rights Management) system.


### What is DRM?

Digital Rights Management (DRM) is a technology and service to prevent illegal copies of the digital contents and protect the profit and rights of copyright holders or content producers.



### Disconnect your player from a PC

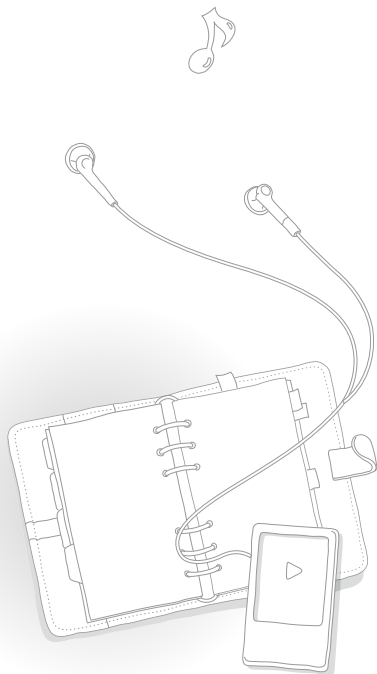
Carefully follow the steps below when disconnecting your player from a PC to avoid data loss or damage to your player.

- 1 Click  on the Windows taskbar.
- 2 Click the pop-up message.
- 3 Click on the window which informs that your player is safely disconnected.
- 4 Unplug the USB cable from your player and the PC.




#### Caution

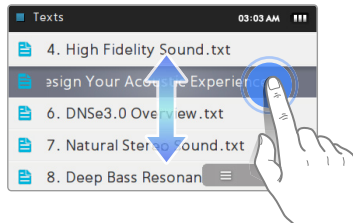
- To avoid damage to your player and corruption of your files, do not disconnect the USB cable while files are being transferred.
- Do not disconnect your player when playing files stored in your player on a PC. Make sure that you stop playback and then disconnect your player from a PC.



# Search for files

Search for files in folders and play them in your player.

- 1 In the main menu, tap .
- 2 Tap a folder from the list.
- 3 Drag up or down to scroll through the file list.
  - If the file name is long, tap and hold the file name area to view the full name.





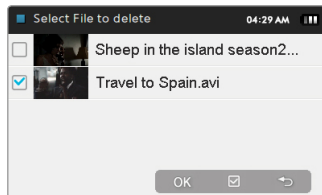
- 4 Tap a file you want.

# Delete files

You can delete unwanted files from your player.

To delete video files, for example:

- 1 In the main menu, tap .
- 2 Tap  at the bottom of the screen.
- 3 Tap <Delete> from the option list.
- 4 Tap files to delete and tap <OK>.
  - appears next to the selected files.
  - Tap  to delete all files.



- 5 Tap <Yes> to confirm.



## Note

You can also tap  and then select files if the trash icon is available.



## Play video and music

Transfer music and video files to your player using the EmoDio program or a removable disk, and then play high-quality video files and listen to music in excellent 3D surround sound. Also, mix music files like a disc jockey using Beat DJ.


Video .....	35
Music.....	39
Beat DJ .....	46

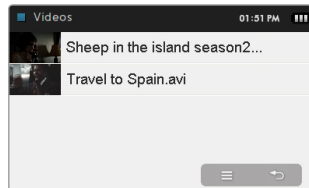
# Video

Play video files in your player.


To download files, see "Download media files."

## Play video files

- 1 In the main menu, tap .
- 2 Select a video file from the list.
  - Drag up or down to scroll through the list and select a file to play.



### Note

To change the view mode to the thumbnail view, tap  and then <Change View Type>.

- 3 Control playback using the following buttons. See "Video playback screen."



Back to the previous menu  
Back to the main menu (tap and hold)



To	Do this
Skip to the previous file or the next file	Tap ⏮ or ⏭
Search backward or forward in a file	Tap and hold ⏮ or ⏭
Pause or resume playback	Tap ⏸ or ▶

 **Note**

- When you download unsupported files to your player with EmoDio, EmoDio will automatically convert the file formats so you can play them in your player.
- You can play subtitle files (.smi) with video files on your player. Subtitle files must be saved with video files to play in the same folder and the file name must be the same as the video file.

Video playback screen



No.	Description
1	Current sound effect
2	Playing status
3	File name
4	Playing progress bar ;  is a bookmark that helps you mark a point within a video
5	Elapsed playing time / Total playing time
6	Menu tray <ul style="list-style-type: none"> <li>- &lt;B.MARK&gt;: Open the bookmark options</li> <li>- : Open the video options</li> </ul>

Play a video from a chapter

Tap and hold the screen during video playback. Your player will split the video file into 15 chapters and capture still images from each clip. When you select one of the still images, the video will begin playback from that point.



Tap to return to the previous screen

**Insert a bookmark**

You can insert a bookmark at the point you want and go to the bookmark to play from that point.

- 1 During video playback, tap the screen at the point you want to bookmark.
- 2 Tap <B.MARK> from the menu tray and tap <Add Bookmark>.
  - A bookmark is inserted to the progress bar.

**Note**

- You can insert one bookmark per video file.
- The point at which you insert a bookmark within a video file may not exactly match the bookmarked point.
- To go to a bookmark, tap <B.MARK> and then <Go to Bookmark>. To delete a bookmark, tap <B.MARK> and then <Delete Bookmark>.

## Use the video options

- 1 Tap the video playback screen.
- 2 Tap from the menu tray.
- 3 Select an option you want.

Option	Description
DNSe	Select appropriate sound effects for videos.
Mosaic Search	Divide a video file into 15 chapters. You can select one of the chapters and start playback from that chapter.
Display	Adjust the frame size and the brightness of the screen. <div style="border: 1px solid gray; padding: 5px; margin-top: 5px;"> <b>Note</b>              You cannot adjust the frame size for some video files.           </div>
TV Out	Set to view videos on your TV. See "Connect your player to a TV" on page 26.
Horizontal Stroke	Set the interval when you drag left or right quickly during video playback. <ul style="list-style-type: none"> <li>– &lt;1 File&gt;: Move between previous and next files.</li> <li>– &lt;Seek&gt;: Change the playback speed.</li> <li>– &lt;30sec Skip&gt;: Skip 30 seconds.</li> <li>– &lt;1min Skip&gt;: Skip 1 minute.</li> </ul>



# Music

Play music files stored in your player.

To download files, see "Download media files."



## Note

If the file library is updated, your player will clear the list of files displayed in <Recently Added> and <Most Played (50)>.

## Listen to music

Music files are categorized in folders by type. You can easily find a music file you want.


Music category	Function
<a href="#">Artists*</a>	Display files by artist.
<a href="#">Albums*</a>	Display files by album.
<a href="#">Songs*</a>	Display files by file name (in the order of special characters, numbers, and alphabets).
<a href="#">Genres*</a>	Display files by genre.
<a href="#">Playlists</a>	Display playlists you created.
<a href="#">Recently Added</a>	Display files you recently downloaded.
<a href="#">Most Played (50)</a>	Display files you play most often (up to 50 files).
<a href="#">Recorded Files</a>	Display files recorded in <FM Radio> or <Voice REC>.
<a href="#">Music Browser</a>	Display all files in the Music folder.
<a href="#">Unknown</a>	Display files that have no track information (ID3 tag).

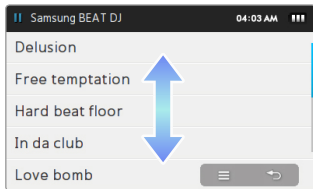
\* In these music categories, files are sorted by track information (ID3 tag). Files that have no track information appear as unknown.

### What is ID3 tag?

ID3 tag is a metadata container attached to MP3 files. It includes information for the music, such as the title, artist, album, or track number, which can be displayed on a music player's screen during playback.







Play music files

- 1 In the main menu, tap .
- 2 Tap a music category.
  - To play the file you last played, tap <Now Playing>.
- 3 Tap an artist, album, genre, or playlist if you selected <Artists>, <Albums>, <Genres>, or <Playlists> in step 2.
- 4 Tap a file to play.
  - Drag up or down to scroll through the list and select a file to play.

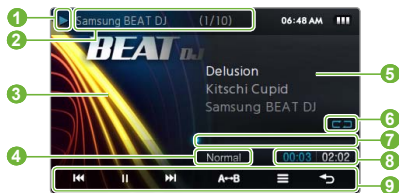


- 5 Control playback by using the buttons. See "Music playback screen."



To	Do this
Skip to the previous or next file	Tap  or 
Search backward or forward	Tap and hold  or 
Pause or resume playback	Tap  or 

## Music playback screen



No.	Description
1	Playing status
2	Track number / Total number of tracks <ul style="list-style-type: none"> <li>• Playback image</li> </ul>
3	If an album image displays, tap and hold it to view the album information
4	Current sound effect
5	Song title, artist, album title
6	Repeat mode
7	Playing progress bar
8	Playing time
	Menu tray
9	<ul style="list-style-type: none"> <li>– &lt;A ↔ B&gt;: Repeat a section of a track</li> <li>– ≡: Opens the music options</li> </ul>

## Repeat a section of a track


You can select a section of a track to repeat.

- 1 Tap <A ↔ B> at the beginning of the section you want to repeat.
  - <A →> displays at the right center of the section.
- 2 Tap <A ↔ B> at the end of the section you want to repeat.
  - <A ↔ B> displays at the right center of the section. Your player repeats the marked section.
- 3 To cancel repeating, tap <A ↔ B> again.

 Note

You cannot repeat a section of a track that is less than 3 seconds long.

## Apply a sound effect (DNSe)

- 1 Tap the music playback screen.
- 2 Tap  from the menu tray.
- 3 Tap <DNSe>.
- 4 Tap a sound effect you want.
  - You can select from <Auto>, <Normal>, <Studio>, <Rock>, <Classic>, <Jazz>, <Ballad>, <Club>, <Dance>, <Café>, <Church>, and <Concert Hall>.
  - If you tap <Auto>, your player will search the track information (ID3 tag) and automatically select an appropriate effect.
  - To select your own equalizer, tap <myDNSe 1> or <myDNSe 2>. See "myDNSe" on page 73.

## What is DNSe?

Digital Natural Sound Engine (DNSe) is a group of sound effects for MP3 players, developed by Samsung. It provides various sound settings to enhance the music you are listening to.

## View album information

If an ID3 tag contains album information, such as a cover image, you can view the album image and tracks included in the album.


- 1 From the music playback screen, tap and hold the screen.
- 2 View the album image and tracks.
  - To view other albums, drag left or right.
  - To play music from the album, tap a music file you want.
  - To browse files, drag up or down.



Indicate the music file now playing

## Search for a music file

You can search for music files by entering keywords.

- 1 Open the quick tray and then tap .
- 2 Tap a search option you want.

Option	Description
Artists	Search by artist name
Albums	Search by album name
Songs	Search by song title

- 3 Enter a keyword on the search field.



- 4 If you selected <Artists> or <Albums>, tap an artist or album name.
- 5 Tap a music file you want from the search list.



### Note

You cannot search for music files with no track information (ID3 tag).

## Create playlists

There is one default playlist and you can create up to 3 playlists.

### Create a playlist


- 1 In the main menu, tap .
- 2 Tap <Playlists>.
- 3 Tap  at the bottom of the screen and tap <Add New Playlist>.
- 4 Enter a name for your new playlist and tap <OK>.

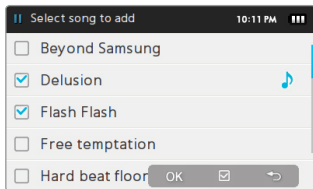


### Note

To rename a playlist, tap <Rename> from the option list.


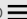
## Add music files to a playlist

- 1 From the file list, tap .
- 2 Tap <Add to Playlist>.
- 3 Tap files you want to add to a playlist.
  - appears next to the selected files.
  - To select all files, tap .




- 4 Tap <OK>.
- 5 Tap a playlist to add the files.
  - To create a new playlist, tap <Add New Playlist>.


 Note


- To add all files of an artist, album, or genre at once, tap  from the list of artists, albums, or genres and then tap <Add to Playlist>.
- To add the currently playing file to a playlist, tap  and then <Add to Playlist>.



## Delete music files from a playlist

- 1 From the file list, tap <Playlists>.
- 2 Tap a playlist that has files you want to delete.
- 3 Tap  at the bottom of the screen and then tap <Delete from Playlist>.
- 4 Tap files you want to delete.
  - appears next to the selected files.
  - To select all files, tap .
- 5 Tap <OK>.
- 5 Tap <Yes> from the pop-up window.

## Use the music options

- 1 Tap the music playback screen.
- 2 Tap  from the menu tray.
- 3 Customize the following options.

Option	Description
<a href="#">DNSe</a>	Select appropriate sound effects for music.
<a href="#">Play Mode</a>	Change the repeat mode.
<a href="#">Music Play Screen</a>	<p>Change the image that displays during music playback.</p> <div data-bbox="305 497 706 621">  <b>Note</b>            Your player supports less than 2 MB of cover images.         </div>
<a href="#">Add to Playlist</a>	Add the currently playing music file to the playlist.

Option	Description
<a href="#">Horizontal Stroke</a>	<p>Set the interval when you drag left or right quickly during music playback.</p> <ul style="list-style-type: none"> <li>– &lt;1 Song&gt;: Move between previous and next files.</li> <li>– &lt;10sec Skip&gt;: Skip 10 seconds.</li> <li>– &lt;30sec Skip&gt;: Skip 30 seconds.</li> <li>– &lt;1min Skip&gt;: Skip 1 minute.</li> </ul> <div data-bbox="990 424 1389 543">  <b>Note</b>            Some files may not skip at the interval you selected.         </div>
<a href="#">Play Speed</a>	Change the playback speed.
 <b>Note</b>	<p>You cannot select a sound effect and change the playback speed if you are playing a music file in Ogg Q10 format.</p>

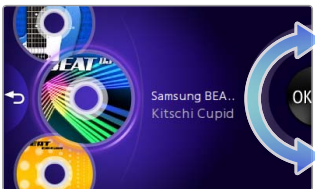
# Beat DJ

Add effects to the music with Beat DJ.

## Note

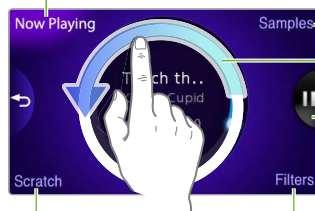
You cannot use Beat DJ when the Bluetooth wireless feature is activated.

- 1 In the main menu, tap .
- 2 Tap an album you want.
  - Rotate the wheel or drag up or down to select an album and tap <OK>.



- 3 Rotate the wheel to select a music file and tap <OK>.
- 4 Apply beat DJ effects to the music file.

Return to the music playback screen



Insert a scratch sound

Insert a filter effect

Insert a sample sound

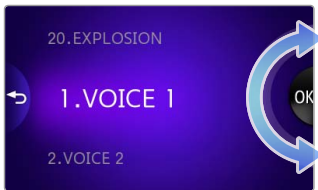
Rotate the wheel clockwise to skip forward or counter-clockwise to skip backward

Pause or resume playback



Insert a sample sound

Rotate the wheel to select a sample sound and then tap <OK>.



Tap ► at the point you want to insert the sample sound.



Insert a scratch sound

Move your finger on the CD image to insert a scratch sound.



**Insert a filter effect**

Rotate the wheel to select a filter effect and then tap <OK>.



Rotate the wheel to adjust the effect level.

**Note**

- You can insert up to 2 filters in a music file.
- If you want to adjust the level for the applied filter effects, return to the music playback screen and tap **Filter** at the center of the screen. Tap the name of the filter you want and then rotate the wheel.



# Use additional applications

Learn how to work with your player's additional applications.

Pictures.....	50
Texts .....	52
FM Radio.....	55
Flash Player .....	59
Games.....	60
Bluetooth.....	61
Datacasts .....	68
Voice REC .....	69
Address Book .....	70


# Pictures



View pictures stored in your player.

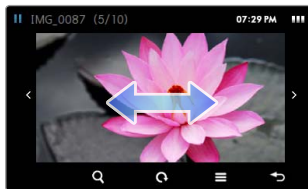
To download files, see "Download media files" on page 28.





## View pictures

- 1 In the main menu, tap .
- 2 Browse pictures.



- 3 Tap a picture you want. The picture displays on the full screen.
- 4 View the picture.
  - Drag left or right to view other pictures.




To	Do this
<a href="#">Zoom in or out</a>	Tap  and then tap  or 
<a href="#">Rotate</a>	Tap 

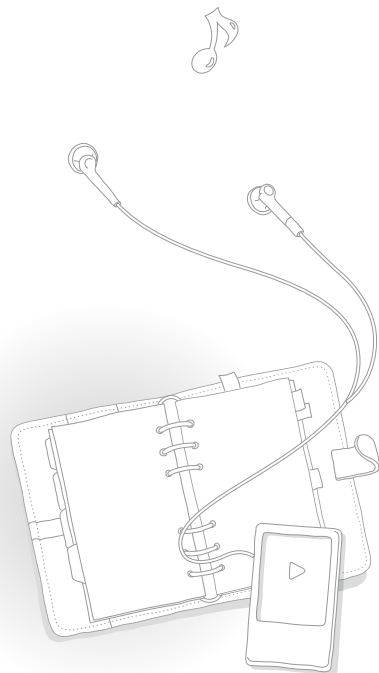
### Note

If the picture size is large, it may take some time to display.

## Use the picture menus

- 1 Tap the picture on the full screen.
- 2 Tap  from the menu tray.
- 3 Customize the following options:

Option	Description
<a href="#">Start Slideshow</a>	View pictures in a slideshow.
<a href="#">Slideshow Effect</a>	Select a transition effect for the slideshow.
<a href="#">Assign</a>	Set a picture as a wallpaper for the main menu screen or as an image displayed when you turn on your player.
<a href="#">TV Out</a>	Set to view pictures on your TV. See "Connect your player to a TV" on page 26.




# Texts



You can use the text viewer to view text files (.txt) stored in your player.

To download files, see "Download media files" on page 28.

## View text files

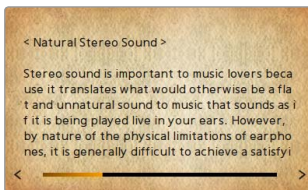
- 1 In the main menu, tap .
- 2 Tap a text file from the list.



### Note

To change the view mode, tap  and then <Change View Type>.

- 3 View the document.
  - Tap the screen to display the text information and menu tray.



To

Move to the previous  
or next page

Do this

- Drag left or right
- Tap < or >

### Insert a bookmark

You can insert a bookmark on the page you want and go to the bookmark to view that page of a document.

- 1 Tap the screen on the page you want to bookmark.
- 2 Tap <B.MARK> from the menu tray and then tap <Add Bookmark>.
  - A bookmark is inserted to the top left of the screen.



#### Note


- You can insert one bookmark per text file.
- To go to a bookmark, tap <B.MARK> and then <Go to Bookmark>. To delete a bookmark, tap <B.MARK> and then <Delete Bookmark>.

### Flip pages automatically

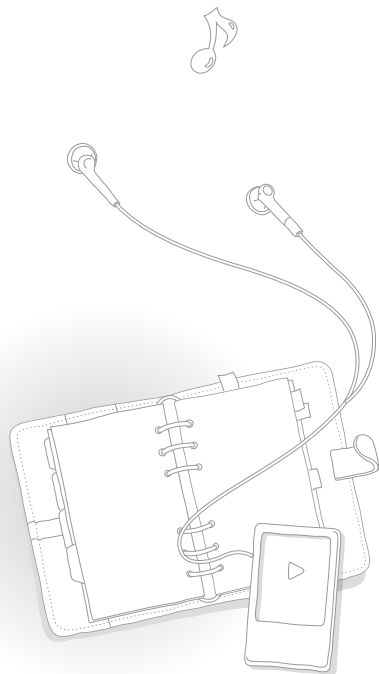
- 1 Tap the screen.
- 2 Tap <AUTO> from the menu tray.
- 3 Tap the automatic flip time (10, 15, 30 seconds or 1 minute).
  - A page automatically flips to the next after the automatic flip time you set.

## Use the text options

You can change settings for viewing documents in the text viewer.

- 1 Tap the screen.
- 2 Tap  from the menu tray.
- 3 Customize the following options:

Option	Description
<a href="#">Text Viewer Type</a>	Change the background style of the text viewer.
<a href="#">Font Size</a>	Change the size of the font displayed in your document.






# FM Radio

You can listen to and record the FM radio, as well as save radio stations.

## Note

You must connect the earphones to your player to listen to the FM radio. The earphones serve as a radio antenna.

## Listen to the FM radio

- 1 In the main menu, tap .
- 2 Tap < or > to scan the radio stations.
  - Tap < or > to scroll through radio frequencies. Tap and hold < or > to scan the available stations automatically.
  - You can also drag the dial to tune stations.



- 3 Listen to the FM radio. See "FM radio screen."

## Note

The FM radio may not tune frequencies for stations correctly depending on the signal status of your current region.

## FM radio screen






No.	Description
1	Frequency scale Frequency for the current station – Tap < or > to scroll through radio frequencies – Tap and hold < or > to tune available radio stations automatically
2	RBDS indicator
3	Tuning dial – Drag the dial to tune stations
4	Radio mode – <Preset>: Preset mode – <Manual>: Manual mode

No.	Description
5	Menu tray – : Mute or unmute audio – : Record the FM radio – : Open the FM radio options

## What is RBDS?

- Radio Broadcast Data System (RBDS) provides program information such as News, Sports or Music, or station information is displayed on the screen.
- If the FM signal strength is weak, the RBDS information may not be displayed.

**Record the FM radio**

- 1 Tap  to record the FM radio.
- 2 Tap <Yes> from the pop-up window.
  - Tap  to pause recording.
  - While recording, the current recording time appears in red and the available remaining recording time is shown to the right.
- 3 Tap  to stop recording.
  - The recorded file is saved automatically.
- 4 Tap <Yes> to play the recorded file.
  - When you are finished playing the recorded file, the screen returns to Recording mode.
  - If you want to return to Recording mode without playing the recorded file, tap <No>.


**Note**

- The maximum recording time for a file is 5 hours.
- The recorded files will be saved in <FM Radio> (in the main menu, tap <File Browser> → <Recorded Files>).

## Save radio stations


You can save your favorite radio stations to easily access them.

**Save the current radio station**

- 1 In Manual mode, tap .
- 2 Tap <Add to Preset>.

**Save radio stations automatically**

You can automatically search for available radio stations and save them as your favorites. You can save up to 30 radio stations.


- 1 In Manual mode, tap .
- 2 Tap <Auto Preset>.
- 3 Tap <Yes> to confirm.
  - Automatic tuning begins. The radio stations located are saved in your favorites.

**Listen to a favorite radio station**

- 1 In Manual mode, tap <Preset> at the bottom of the FM radio screen.
- 2 Tap the radio station you want.

## Use the FM radio options

You can change options for listening to the FM radio.

- 1 From the FM radio screen, tap 
- 2 Customize the following options:

Option	Description
<a href="#">Add to Preset*</a>	Save the current radio station.
<a href="#">Delete from Preset**</a>	Delete a saved radio station.
<a href="#">Auto Preset</a>	Search for and save available radio stations automatically (up to 30). Re-tune frequencies according to your region. See the following frequency ranges by region:
Worldwide	87.50 MHz~108.00 MHz
USA	87.5 MHz~108.0 MHz
Korea	
Japan	76.0 MHz~108.0 MHz

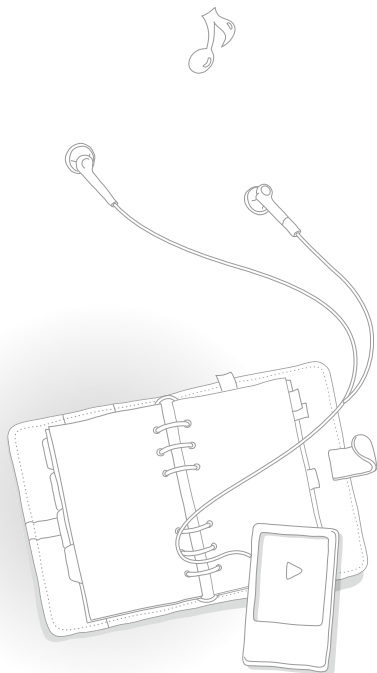
### FM Region

#### Note

- This option may not be available depending on your region.
- If you change the region, the previously saved stations will be deleted.


\* Available only in Manual mode

\*\* Available only in Preset mode



# Flash Player




Use the flash player to view flash files (.swf) stored in your player.  
To download files, see "Download media files" on page 28.

**1** In the main menu, tap .

**2** Tap a file you want.

**3** Play the file.

- Tap  at the bottom of the screen to display the menu tray.


To	Do this
<a href="#">Move on the screen</a>	Tap 
<a href="#">Pause or resume playback</a>	Tap  or 

## Note

- The flash player may not play some flash files (.swf).
- Your player may restart depending on the flash files (.swf) you play.

# Games

Play games stored in your player.

- 1 In the main menu, tap .
- 2 Tap a game you want.

Game	Description
<a href="#">Wise Star</a>	Line up 3 planets of the same kind horizontally or vertically to explode them and gain points.
<a href="#">Sudoku Champ</a>	Enter digits from 1 to 9 into the blank spaces. Every row must contain one of each digit.
<a href="#">Bubble Bang</a>	Burst as many bubbles as possible in a set time.
<a href="#">Astro Ranger</a>	Tap a visual image in time to musical and visual cues to get high scores.

- 3 Play the game.



#### Note

- Games provided may be changed without prior notice.
- For information about playing games, see the Help of each game.

# Bluetooth








Use the Bluetooth wireless feature to connect Bluetooth stereo headsets to listen to music. You can also connect mobile phones or other wireless devices.

## Caution

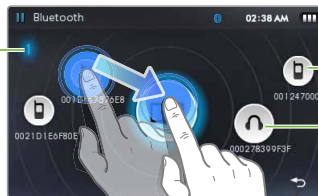
Do not use the Bluetooth wireless features for illegal purposes (pirated copy of files, illegal wireless tapping and communications, etc. for commercial purposes). Samsung is not responsible for any of these illegal uses and the consequent results.

## Find and register other Bluetooth-enabled devices

To use the Bluetooth wireless feature, you need to register your player with other devices.

- 1 Turn on the Bluetooth wireless feature of the other device you want to connect to.
- 2 In the main menu, tap .
- 3 Tap  at the center of the screen, or tap  at the bottom of the screen.
  - Your player starts searching for Bluetooth-enabled devices around your player.
  - To stop searching, tap .
  - If your player has not found the device you want to connect to or if you want to refresh the list of the searched devices, tap  or .
- 4 Tap and drag a device icon onto the .

Indicate the current page number (The number increases as the number of detected devices increases)



Indicate mobile phones


Indicate Bluetooth stereo headsets

## Note

It is recommended to name mobile devices in English to ensure compatibility.




- 5 Enter a Bluetooth password for the device you connect to for the first time.
  - To set a Bluetooth password, see the user manual of the device you are connecting to.
- 6 Tap <Yes> to confirm.
  - When you enter the correct Bluetooth password, registering is complete. Now you can connect your player to the other device.
  - For connecting Bluetooth-enabled devices, see "Connect Bluetooth-enabled devices."

#### Delete registered devices



- 1 From the Bluetooth screen, tap a device you want to delete.
- 2 Tap  at the bottom of the screen.

## Connect Bluetooth-enabled devices

You can use the Bluetooth wireless feature to connect to other devices

- 1 In the main menu, tap .
- 2 Tap and drag a device icon onto the  icon.
  - To search again, tap .
- 3 Tap a service depending on the device you are connecting to.

Option	Description
<a href="#">File Transfer</a>	Select to transfer files to and from the device.


- 4 Use the Bluetooth-enabled device that is connected with your player. See "Use call functions (hands-free)."
  - The Bluetooth icon at the top of the screen will change according to the device type connected.
    - (): Mobile phones, (): Bluetooth stereo headsets
  - If a Bluetooth stereo headset is connected, you can listen to music or hear a voice through the headset.



**Note**

- If you restart your player or the other device connected, the Bluetooth connection will be disconnected. See the steps above to reconnect the devices.
- Some Bluetooth stereo headsets may not be compatible with your player.

**Disconnect the Bluetooth devices**

- 1 From the Bluetooth screen, tap the connected device.
- 2 Tap <Yes> to confirm.
- 3 Tap .

**Note**

When you are not using the Bluetooth features, deactivate the Bluetooth wireless feature to save the battery. Tap  and then tap <Bluetooth :ON>.

**Use call functions (hands-free)**

When your player is connected to your mobile phone with the hands-free service, you can make or receive calls.

**Make voice calls**


- 1 Tap .




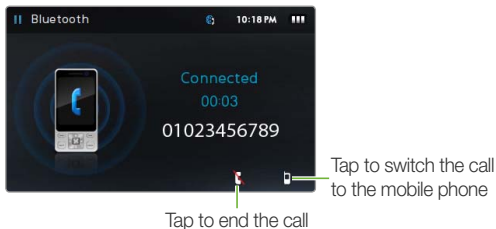
- 2 Make a call using one of the following options:

Option	Description
Call by Number	Enter a phone number you want
Call History	Make a call from the call log
Redial	Call the last dialed number

**Note**

To clear the call log, tap  → <Delete> or <Delete All> → <Yes>.

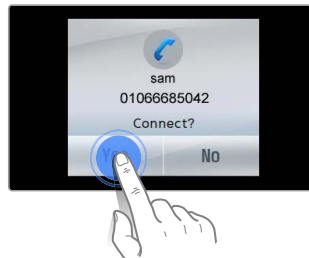
- For <Call by number>, enter a phone number on the dialer screen and then tap .
  - You can make calls with speed dial numbers saved on the connected phone. From the dialer screen, tap and hold a speed dial number.
- When a call is connected, the following screen appears.

**Note**

Your player may emit some noise when you press the buttons of the mobile phone or make or answer a call.

**Answer a call**

If you receive a call from the connected mobile phone while playing music or videos, the playback will stop and a pop-up window will appear. Tap <Yes> to answer the call.

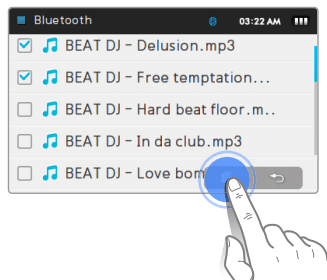


## Transfer files

When your player is connected with mobile phones or other MP3 players with the file transfer service, you can send or receive data, such as music files, pictures, address book entries, etc.

### Send a file

When the file browser launches, tap the files you want to send and then tap .

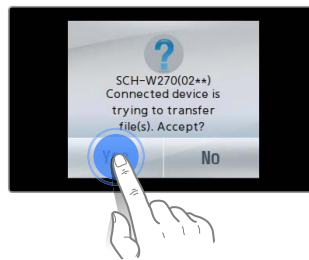


### Note

If you send DRM-protected files to another device, the files will not be available on the destination device.

### Receive a file

When you receive a file, a pop-up window appears to confirm that you are connecting. Tap <Yes> to receive the file.




### Note

- For sending files to your player from the other device, see the user manual of the other device.
- Received files will be saved in <File Browser> → <Shared Data>.
- If there is a file with the same name in the folder, your player will automatically add "(1)" to the name and save the file.

## Use the Bluetooth options

You can set options for the Bluetooth wireless feature.

- 1 Tap  at the bottom of the Bluetooth main screen.
- 2 Customize the following options:

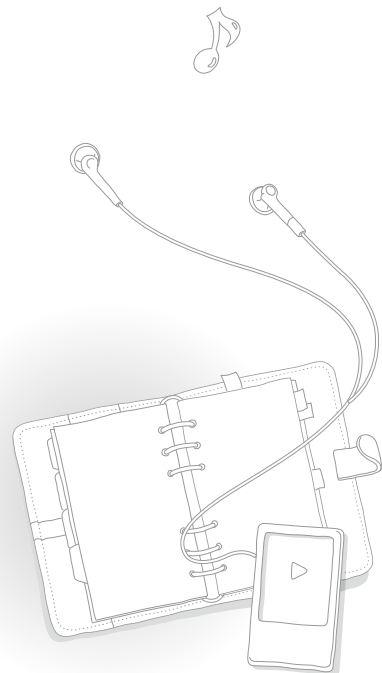
Option	Description
Bluetooth : ON	Turn the Bluetooth wireless feature on or off.
Search Option	Select a type of the Bluetooth service to search.
My Device Info.	Check the device name and address for Bluetooth.

## Information for using Bluetooth

- There may be some noise or malfunction due to the interference of the radio waves from other devices or the user environment.
- Make sure that Bluetooth devices you are trying to connect to the player are nearby. As the distance between the player and the connected device increases, the sound quality will be downgraded.
- The maximum distance for the wireless connection between your player and another Bluetooth-enabled device is 30 feet (10 meters). If the player and the device are more than 30 feet apart, the connection will be terminated automatically. Even when the devices are within the maximum distance, the quality of communications will be downgraded if the devices are separated by obstacles such as walls or doors.
- When you are using Bluetooth stereo headsets, avoid viewing pictures or documents as this may slow down button responses and may decrease the quality of your Bluetooth connection.
- The Bluetooth wireless feature in your player is optimized for Samsung devices and may not be compatible with devices of other manufacturers.
- You cannot use the Bluetooth wireless feature while you are listening to the FM radio, playing games, or using Beat DJ. Your player may not play some music or video files via a Bluetooth stereo headset.
- Use only Bluetooth-certified stereo headsets. Your player does not support mono hands-free headsets.
- Some menus in your player may not be available when the Bluetooth wireless feature is activated.

- Compatible Bluetooth stereo headsets

Manufacturer	Model name
SAMSUNG	SBH500, SBH100
Sony Ericsson	HBH-DS970
Jabra	BT620S
iBluon	BT-HS02-HQ
Plantronics	P590, VOYAGER 855
LUBIX	NC 1



# Datacasts

When you have registered RSS addresses of your favorite news website, UCC, or blogs on EmoDio, you can view various contents in Datacasts.




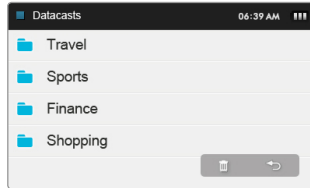
## Note

For more information about Datacasts, see the Help of EmoDio.

### What is RSS?

RSS is a standardized XML file format used to publish and deliver to users or readers frequently-updated works, such as news or blog entries.




- 1 In the main menu, tap .
- 2 Tap a channel folder you want.




- 3 Tap the content you want to view.
- 4 View the content.

# Voice REC

You can record voice memos.

- 1 In the main menu, tap .
- 2 Tap  to start recording.
  - The recording starts.
  - Tap  to pause recording.
  - While recording, the current recording time appears in red and the available remaining recording time is shown to the right.



- 3 Tap  to stop recording.
  - The recorded file is saved automatically.
- 4 Tap <Yes> to play the recorded file.
  - After the recorded file has played, the screen will return to Recording mode.
  - If you want to return to Recording mode without playing back the file, tap <No>.




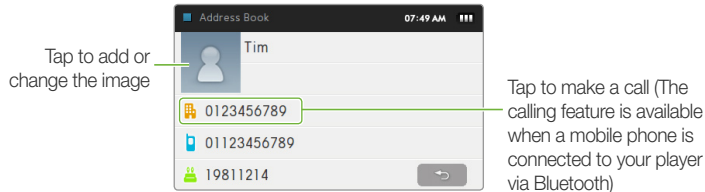
## Note

- The recording may be interrupted when you record too close or too far from the microphone.
- When the battery is low, you cannot record voice memos.
- The maximum recording time for one file is 5 hours.
- The recorded files will be saved in <File Browser> → <Recorded Files> → <Voice>.

# Address Book

View contact information received via Bluetooth. When the mobile phone is connected to your player, you can make a call directly from the address book.

- 1 In the main menu, tap .
- 2 Tap a contact's name you want.
- 3 View the contact information.



## Note

- Address book entries are sorted alphabetically.
- The address book files transferred from other devices will be saved in <File Browser> → <Shared Data>.
- The address book supports only vCard files.






# Customize settings

Change your player's settings to match your preferences.

Settings .....	72
Sound settings .....	73
Display settings .....	73
Language settings.....	73
Time settings.....	74
System settings.....	74

# Settings

Learn to change your player's settings.

- 1 In the main menu, tap .
- 2 Tap a setting menu you want to customize.

Menu	Description
<a href="#">Sound</a>	Set sound settings
<a href="#">Display</a>	Set display settings
<a href="#">Language</a>	Set language settings
<a href="#">Time</a>	Set the current time and date
<a href="#">System</a>	Set system settings

- 3 Tap an option.
- 4 Change the settings.

## Sound settings

Menu	Description
Street Mode	Set to make the music sound clearer by filtering out ambient noise.
Audio Upscaler	Set to upscale low resolution audio files for improved sound quality.
myDNSe	Set up your own equalizer (DNSe) to customize sounds to your preference. Adjust frequencies for each equalizer and tap <OK>.
Beep Sound	Turn the beep sound on or off when you tap the touch screen.
Wise Volume	Set to limit the volume of the earphones to protect your hearing. <ul style="list-style-type: none"> <li>– &lt;Off&gt;: You can adjust the volume as you want. If you increase the volume over level 15 and restart your player, the player will turn on at volume level 15 to protect your hearing.</li> <li>– &lt;On&gt;: Your player displays a warning message when you are exposed to a high level of volume for a long period of time. Your player automatically decreases the volume to a moderate level.</li> </ul>
Master EQ	Optimize the sound settings for your earphones. Adjust frequencies for the equalizer and tap <OK>.

## Display settings

Menu	Description
Font	Select a font type for the display text.
Reset My Skin	Restore the wallpaper image.
Reset Booting Image	Restore the image displayed when your player is turned on.
180° rotate	Change the orientation of the screen.
Display Off & Hold	Set how long the screen stays on when not in use. When the screen turns off, it is automatically locked.
Brightness	Adjust the brightness of the screen.


## Language settings

Menu	Description
Menu	Select a language for the display text.
Contents	Select a language to display the contents stored in your player.



Time settings


Menu	Description
Date&Time	Set the current time and date. See "Analog clock/Digital clock" on page 20.
Date Type	Set the time format.
Time Zone	Select your time zone to view the current time .


System settings

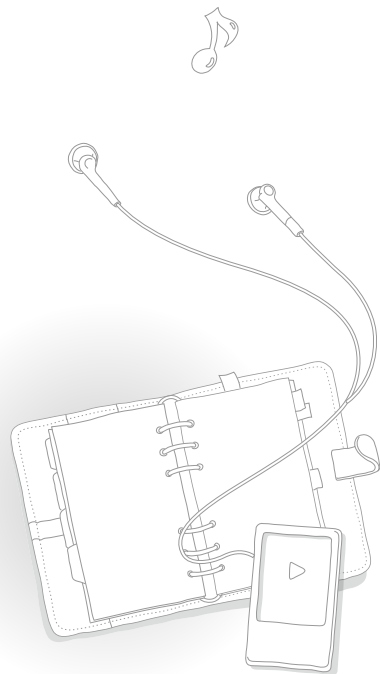
Menu	Description
My Info	<p>Enter user information, such as name and birthday.</p> <div style="border: 1px solid #ccc; padding: 10px; margin: 10px 0;"> <p> <b>Note</b></p> <p>User name you enter will display on the screen when your player is turned on. On your birthday, the message "Happy birthday" will display.</p> </div>
Sleep	Set to automatically turn off your player after a specified period of time.

Menu	Description
PC Connection	<p>Select a USB connection mode to connect your player to a PC.</p> <ul style="list-style-type: none"> <li>– &lt;MSC&gt; : A PC will recognize your player as a removable disk.</li> <li>– &lt;MTP&gt;: A PC will recognize your player as a media device. The USB connection mode is set to &lt;MTP&gt; by default.</li> </ul>
TV out Type	<p>Select a video encoding system for connecting to a TV. If you are not sure which to select, check the documentation that came with your TV.</p> <ul style="list-style-type: none"> <li>– &lt;NTSC&gt;: USA, Canada, Japan, Korea, Taiwan, Mexico, etc.</li> <li>– &lt;PAL&gt; (Supports the BDGHI type only): China, Denmark, Finland, Germany, United Kingdom, Netherlands, Italy, Malaysia, Singapore, Spain, Sweden, Thailand, Norway, etc.</li> </ul>

Menu	Description
Hold Option	<p>Set how your player works when you press .</p> <ul style="list-style-type: none"> <li>- &lt;Touch Screen &amp; Button&gt;: Lock the touch screen and the buttons.</li> <li>- &lt;Touch Screen&gt;: Lock the touch screen only.</li> </ul>
Default Set	<p>Restore all settings to the factory settings.</p> <p>Delete all data and files stored in your player.</p>
Format	<div style="border: 1px solid #ccc; padding: 10px; background-color: #f9f9f9;"> <p> <b>Note</b></p> <p>Remember to make backup copies of all important data stored in your player. The manufacturer's warranty does not cover loss of data that results from user actions.</p> </div>

Menu	Description
DivX registration code	<p>Check the DivX registration code for your player.</p> <div style="border: 1px solid #ccc; padding: 10px; background-color: #f9f9f9;"> <p> <b>Note</b></p> <p><b>ABOUT DIVX VIDEO:</b> DivX® is a digital video format created by DivX, Inc. This is an official DivX Certified device that plays DivX video. Visit <a href="http://www.divx.com">www.divx.com</a> for more information and software tools to convert your files into DivX video.</p> <p><b>ABOUT DIVX VIDEO-ON-DEMAND:</b> This DivX Certified® device must be registered in order to play DivX Video-on-Demand (VOD) content. To generate the registration code, locate the DivX VOD section in the device setup menu. Go to <a href="http://vod.divx.com">vod.divx.com</a> with this code to complete the registration process and learn more about DivX VOD.</p> <p>Devices certified to play DivX video at the Mobile profile:                      "DivX Certified to play DivX® video up to 320x240"</p> </div>

Menu	Description
	<p>Check the system information of your player.</p> <ul style="list-style-type: none"><li>- &lt;Firmware&gt;: View the version of the firmware installed in your player.</li><li>- &lt;Memory&gt;: View the total amount of memory, and the amount of memory being used and remaining.</li></ul>
About	<p> <b>Note</b></p> <p><b>Regarding the Built-In Memory</b> 1 GB = 1,000,000,000 bytes : actual formatted capacity may be less as the internal firmware uses a portion of the memory.</p>








# Appendix

View the maintenance, specifications, and troubleshooting for your player.

Firmware upgrade .....	78
Maintenance of your player .....	79
Troubleshooting .....	80
Specifications .....	82
Warranty .....	84
License .....	86

## Firmware upgrade

Future upgrades may be available for your player to enhance performance and compatibility.

- 1 Connect your player to a PC using the USB cable.
  - 2 Click <MENU> on the top of the EmoDio.
  - 3 Click <Portable Device> → <Update Firmware>.
    - If there is a firmware update available, you can update the firmware.
  - 4 Click <OK>.
    - Updated firmware is transferred to the player.
  - 5 After disconnecting the USB cable, the player will be turned off automatically.
  - 6 Press and hold   / .
- The firmware will be upgraded.



### Note

- Check the battery charge status of your player. If the battery is low, the firmware will not be upgraded.
- You need to have at least 100 MB of free space on your player for the upgrade.



# Maintenance of your player

Carefully read the following to properly clean, store, or dispose of your player.

---



## Cleaning

- When your player is dirty, wipe your player with a soft, clean and dry cloth.
  - Do not apply cleaners to your player's surface. This may cause damage or affect the performance of the player.
  - Do not clean your player with gasoline, benzene, thinner, WD-40, or other chemicals. This may cause damage to your player's surface.
- 



## Storing

Store your player in a well-ventilated area.

---



## Disposing

- Dispose of wrapping materials, batteries, and electronic devices separately.
  - The wrapping materials include paper and two kinds of plastics (PC, PE).
-

## Troubleshooting

If you have a problem with your new MP3 player, check for a solution in this list. If the problem persists, contact Samsung Customer Service at 1-800-SAMSUNG (1-800-726-7864).

Problem	Solution
My player will not turn on.	<ul style="list-style-type: none"> <li>Your player will not turn on if the battery is completely drained. Recharge the battery and turn the player on again.</li> <li>Press the reset button to reset your player.</li> </ul>
The touch screen and buttons do not work.	<ul style="list-style-type: none"> <li>Check if the touch screen and buttons are locked.</li> <li>Check if the buttons or icons correspond to the functions you want to activate.</li> <li>Press the reset button to reset your player.</li> </ul>
The screen does not display anything.	<ul style="list-style-type: none"> <li>Your player turns off when you do not use it for a specific period of time. Turn your player on and try again.</li> <li>The screen may not be visible under the direct rays of the sun.</li> <li>The screen turns off automatically after the period of time you set in &lt;Display Off &amp; Hold&gt; has elapsed.</li> </ul>
My player turns off automatically.	If you do not use your player for 5 minutes after you pause the playback, it will automatically turn off.

Problem	Solution
The battery running time is different from what is written in the user manual.	<ul style="list-style-type: none"> <li>The battery running time may differ depending on the current sound mode or display settings.</li> <li>The battery running time may shorten when your player was left in a high or low temperature.</li> </ul>
EmoDio will not work on a PC.	<p>Check if your PC meets PC requirements. See "Recommended PC requirements."</p> <p>Run Windows Update on the PC. Select key updates and service packs and update all.</p>
My player will not connect to a PC.	<p>When the update is completed, reboot the PC and reconnect.</p> <p>Reformat your player on Windows XP or Vista and try again.</p>
The file transfer is too slow.	<p>End all programs you are not using. Running multiple programs simultaneously can slow down the file transfer rate.</p> <ul style="list-style-type: none"> <li>Check if any playable files are stored in your player.</li> </ul>
My player will not play any files.	<ul style="list-style-type: none"> <li>Check the size of the files to play. Your player will not play more than 2 GB files.</li> <li>Check if the files are damaged.</li> <li>Check the battery remaining.</li> </ul>

Problem	Solution
I cannot download files to my player.	<ul style="list-style-type: none"> <li>• Check if the USB cable is correctly connected. Reconnect it.</li> <li>• Check if you have Windows Media Player 11 or higher installed on your PC. If you are using old versions, download Windows Media Player 11 or higher.</li> <li>• Check if the memory is full.</li> <li>• Press the reset button to reset your player.</li> </ul>
Files or data are missing.	Check if you disconnected the USB cable while transferring files or data. This can cause data loss or fatal errors in your player. Samsung is not responsible for any damages resulting from data loss.
The playing time does not display correctly during playback.	This is normal if the currently playing file is of the VBR (Variable Bit Rate) format.
The file name does not display correctly.	Change the language setting in <Settings> → <Language> → <Contents>.

Problem	Solution
My player is getting hot to the touch.	Charging the battery can heat up your player. It does not affect the player's life or capabilities.
My player does not play a video file but display an error message.	Retransfer the video file with EmoDio.
The Bluetooth wireless connection is not established.	<ul style="list-style-type: none"> <li>• Check if you are connecting to Bluetooth-certified stereo headsets. Your player does not support mono hands-free headsets.</li> <li>• If you restart your player, stereo headset, or mobile phone, the Bluetooth connection may be ended. Reconnect again.</li> <li>• If you are connecting to a mobile phone, the connection with a Bluetooth stereo headset must be ended. Check if a stereo headset is connected with your player.</li> </ul>

# Specifications

<b>Model Name</b>	YP-R1	
<b>Rating</b>	DC 5.0V / 1A	
<b>Audio</b>	<ul style="list-style-type: none"> <li>• MPEG1/2/2.5 Layer 3 (8 kbps ~ 320 kbps, 8 kHz ~ 48 kHz)</li> <li>• WMA (12 kbps ~ 320 kbps, 16 kHz ~ 48 kHz)</li> <li>• Ogg (32 kbps ~ 400 kbps, Q0 ~ Q10, 8 kHz ~ 48 kHz)</li> <li>• AAC-LC (8 kbps ~ 320 kbps, 8 kHz ~ 48 kHz)</li> <li>• AAC+ (8 kbps ~ 320 kbps, 8 kHz ~ 48 kHz)</li> <li>• Enhanced-AAC-Plus (8 kbps ~ 320 kbps, 8 kHz ~ 48 kHz)</li> <li>• FLAC (level 0 ~ 8, 16 kHz ~ 48 kHz)</li> <li>• RA (20 kbps ~ 96 kbps, 8 kHz, 11.025 kHz, 44.1 kHz)</li> <li>• WAV (wav standard, 8 kHz ~ 48 kHz)</li> </ul>	
<b>File</b>	<b>Video</b>	<b>Audio</b>
<b>Video</b>	AVI/SVI <ul style="list-style-type: none"> <li>• MPEG4 (Max.720 X 480) Advanced Simple Profile@Level 5</li> <li>• Divx3/4/5/(Max. 720 X 480)</li> <li>• Xvid (Max. 720 X 480)</li> <li>• H.264/AVC (Max. 720 X 480) High Profile@Level3.0</li> </ul> WMV9 (MAX 720 X 480) Advanced Profile@level1	MP3/AAC/AAC+
	MP4	WMA
	WMV/ASF <ul style="list-style-type: none"> <li>• MPEG4 (Max.720 X 480) Advanced Simple Profile@Level 5</li> <li>• H.264/AVC (Max. 720 X 480) High Profile@Level 3.0</li> </ul> WMV9 (MAX 720 X 480) Advanced Profile@level1(vc1)	MP3/AAC/AAC+
	MOV	WMA
	<ul style="list-style-type: none"> <li>• MPEG4 (Max.720 X 480) Advanced Simple Profile@Level 5</li> <li>• H.264/AVC (Max. 720 X 480) High Profile@Level 3.0</li> </ul>	AAC/AAC+
<b>Image</b>	JPEG (Baseline, Progressive), BMP (MAX32Bit), PNG, Gif (89a/87a)	
<b>Flash</b>	SWF (Flash Player 8.0 or lower, ActionScript2.0 or lower)	

Earphones Output	20 mW/Ch. (based on 16 Ω)	
Output Frequency Range	20 Hz ~ 20 kHz	
Signal to Noise Ratio	90 dB with 20 kHz LPF (based on 1 kHz, 0 dB)	
Supported Number of Files/Folders	File: Max. 5000 Folder: Max. 5000 (including File)	
Playing Time	Music: 25 hours (MP3 128 kbps, Volume level 15, Normal sound mode, LCD off) Video: 5 hours ((Brightness 3, Volume level 15, Normal sound mode, SVI)	
Temperature Range for Operation	23° F ~ 95° F (-5° C ~ 35° C)	
Case	Tempered glass, Plastic, Aluminum	
Weight	1.76 oz	
Dimensions (WxHxD)	1.79" X 3.35" X 0.35"	
FM Radio	FM T.H.D	1 %
	FM Signal to Noise Ratio	55 dB
	FM Useable Sensitivity	30 dBμ

## Wireless System

Bluetooth QD ID	B015440
Emission Type	F1D
RF power	CLASS I
Transmit Frequency	2402 MHz ~ 2480 MHz
Receive Frequency	2402 MHz ~ 2480 MHz
Number of channels	79 channels
Modulation System	GFSK
Communication Mode	Semi-duplex Operation
Humidity	0 ~ 95 %
Specifications Version Supported	2.0 + EDR
Module	BCM2070

\* Some of the contents in this manual are subject to change without prior notice for further improvement.

# Warranty

Samsung warrants this product as free of defects in material, design and workmanship for a period of twelve (12) months from the original date of purchase.

If during the period of warranty this product proves defective under normal use and service, you should return the product to the retailer from whom it was originally purchased.

The liability of Samsung and its appointed maintenance company is limited to the cost of repair and/or replacement of the unit under warranty.

Return of the product for defective reasons should be to the original purchaser; however, Samsung Authorized Dealers and Authorized Service Centers will comply with the warranty on the terms issued to purchasers in the country concerned. For further information relating to the Authorized Service Centers contact; 1-800-SAMSUNG (1-800-726-7864).  
www.samsung.com/us

## WARRANTY CONDITIONS:

1. The warranty is only valid when the warranty card is properly completed, and upon presentation of the proof of purchase consisting of original invoice or sales slip confirmation, indicating the date of purchase, dealer's name, model, serial No. and product number.

Samsung reserves the right to refuse warranty service if this information has been removed or changed after the original purchase of the product from the dealer.

2. Samsung's obligations are to the repair of the defective part, and at its discretion, replacement of the product (service exchange unit).

3. Warranty repairs must be carried out by an Authorized Samsung Dealer/Service Center. No reimbursement will be made for repairs carried out by non Samsung Centers, and warranty coverage will not be valid for any repairs or damage caused by such repairs.
4. Repair or replacement under the terms of this warranty does not give right to extension to or a new starting of the period of warranty. Repair or direct replacement under the terms of this warranty may be fulfilled with functionally equivalent service exchange units.
5. The warranty is not applicable in cases other than defects in material, design and workmanship.
  - The warranty does not cover the following:
    - Periodic checks, maintenance, repair and replacement of parts due to normal wear and tear.
    - Abuse or misuse, including but not solely limited to the failure to use this product for its normal purposed or in accordance with Samsung's instructions usage and maintenance.
    - Use of the product in conjunction with accessories not approved by Samsung for use with this product.
    - Failure of the product arising from incorrect installation or use not consistent with technical or safety standards in current force, or failure to comply with product manual instructions.
    - Accidents, Acts of God or any cause beyond the control of Samsung caused by lightning, water, fire, public disturbances and improper ventilation.
    - Unauthorized modifications carried out for the product to comply with local or national technical standards in countries for which the Samsung product was not originally designed.

- Repairs performed by non-authorized service centers such as opening of the product by a non-authorized person.
  - The model, serial No. and product number on the product has been altered, deleted, removed or made illegible.
6. This warranty does not affect the consumer's statutory rights nor the consumers rights against the dealer from their purchase/sales agreement.

THERE ARE NO EXPRESS WARRANTIES OTHER THAN THOSE LISTED AND DESCRIBED ABOVE, AND NO WARRANTIES WHETHER EXPRESS OR IMPLIED, INCLUDING, BUT NOT LIMITED TO, ANY IMPLIED WARRANTIES OF MERCHANTABILITY OR FITNESS FOR A PARTICULAR PURPOSE, SHALL APPLY AFTER THE EXPRESS WARRANTY PERIODS STATED ABOVE, AND NO OTHER EXPRESS WARRANTY OR GUARANTY GIVEN BY ANY PERSON, FIRM OR CORPORATION WITH RESPECT TO THIS PRODUCT SHALL BE BINDING ON SAMSUNG, SAMSUNG SHALL NOT BE LIABLE FOR LOSS OF REVENUE OR PROFITS, FAILURE TO REALIZE SAVINGS OR OTHER BENEFITS, OR ANY OTHER SPECIAL, INCIDENTAL OR CONSEQUENTIAL DAMAGES CAUSED BY THE USE, MISUSE OR INABILITY TO USE THIS PRODUCT, REGARDLESS OF THE LEGAL THEORY ON WHICH THE CLAIM IS BASED, AND EVEN IF SAMSUNG HAS BEEN ADVISED OF THE POSSIBILITY OF SUCH DAMAGES.

NOR SHALL RECOVERY OF ANY KIND AGAINST SAMSUNG BE GREATER IN AMOUNT THAN THE PURCHASE PRICE OF THE PRODUCT SOLD BY SAMSUNG AND CAUSING THE ALLEGED DAMAGE.

WITHOUT LIMITING THE FOREGOING,

PURCHASER ASSUMES ALL RISK AND LIABILITY FOR LOSS, DAMAGE OR INJURY TO PURCHASER AND PURCHASER'S PROPERTY AND TO OTHERS AND THEIR PROPERTY ARISING OUT OF THE USE, MISUSE OR INABILITY TO USE THIS PRODUCT SOLD BY SAMSUNG NOT CAUSED DIRECTLY BY THE NEGLIGENCE OF SAMSUNG. THIS LIMITED WARRANTY SHALL NOT EXTEND TO ANYONE OTHER THAN THE ORIGINAL PURCHASER OF THIS PRODUCT, IS NONTRANSFERABLE AND STATES YOUR EXCLUSIVE REMEDY.

Some states do not allow limitations on how long an implied warranty lasts, or the exclusion or limitation of incidental or consequential damages, so the above limitations or exclusions may not apply to you.

This warranty gives you specific legal rights, and you may also have other rights which vary from state to state.

This product is for personal use only, and is only for use in compliance with the limitations of copyright and other laws.

To obtain warranty service, please contact SAMSUNG at: Samsung Electronics America, Inc. 400 Valley Road, Suite 201 Mount Arlington, NJ 07856 1-800-SAMSUNG (1-800-726-7864)

[www.samsung.com/us](http://www.samsung.com/us) 081299

## License

The product unit accompanying this user manual is licensed under certain intellectual property rights of certain third parties. In particular, this product is licensed under the following US patents : 5,991,715, 5,740,317, 4,972,484, 5,214,678, 5,323,396, 5,539,829, 5,606,618, 5,530,655, 5,777,992, 6,289,308, 5,610,985, 5,481,643, 5,544,247, 5,960,037, 6,023,490, 5,878,080, and under US Published Patent Application No. 2001-44713-A1.

This license is limited to private non-commercial use by end-user consumers for licensed contents. No rights are granted for commercial use. The license does not cover any product unit other than this product unit and the license does not extend to any unlicensed product unit or process conforming to ISO/IEC 11172-3 or ISO/IEC 13818-3 used or sold in combination with this product unit. The license only covers the use of this product unit to encode and/or decode audio files conforming to the ISO/IEC 11172-3 or ISO/IEC 13818-3. No rights are granted under this license for product features or functions that do not conform to the ISO/IEC 11172-3 or ISO/IEC 13818-3.



# Open Source Announcement

Some software components of this product incorporate source code covered under the GNU General Public License (GPL) and BSD.

To obtain the source code covered under above licenses, please visit <http://opensource.samsungmobile.com/>.

Component	License
<a href="#">Linux Kernel 2.6.24</a>	GPL 2.0
<a href="#">MSC application</a>	GPL 2.0
<a href="#">Video for Linux Two header file</a>	BSD 2.0

Below is the original English text of the GNU GPL and BSD.

## GNU GENERAL PUBLIC LICENSE

Version 2, June 1991

Copyright (C) 1989, 1991 Free Software Foundation, Inc.  
51 Franklin St, Fifth Floor, Boston, MA 02110-1301 USA

Everyone is permitted to copy and distribute verbatim copies of this license document, but changing it is not allowed.

### Preamble

The licenses for most software are designed to take away your freedom to share and change it. By contrast, the GNU General Public License is intended to guarantee your freedom to share and change free software--to make sure the software is free for all its users. This General Public License applies to most of the Free Software Foundation's software and to any other program whose authors commit to using it. (Some other Free Software Foundation software is covered by the GNU Library General Public License instead.) You can apply it to your programs, too.

When we speak of free software, we are referring to freedom, not price. Our General Public Licenses are designed to make sure that you have the freedom to distribute copies of free software (and charge for this service if you wish), that you receive source code or can get it if you want it, that you can change the software or use pieces of it in new free programs; and that you know you can do these things.

To protect your rights, we need to make restrictions that forbid anyone to deny you these rights or to ask you to surrender the rights. These restrictions translate to certain responsibilities for you if you distribute copies of the software, or if you modify it. For example, if you distribute copies of such a program, whether gratis or for a fee, you must give the recipients all the rights that you have. You must make sure that they, too, receive or can get the source code. And you must show them these terms so they know their rights.

We protect your rights with two steps:

(1) copyright the software, and (2) offer you this license which gives you legal permission to copy, distribute and/or modify the software. Also, for each author's protection and ours, we want to make certain that everyone understands that there is no warranty for this free software.

If the software is modified by someone else and passed on, we want its recipients to know that what they have is not the original, so that any problems introduced by others will not reflect on the original authors' reputations.

Finally, any free program is threatened constantly by software patents.

We wish to avoid the danger that redistributors of a free program will individually obtain patent licenses, in effect making the program proprietary. To prevent this, we have made it clear that any patent must be licensed for everyone's free use or not licensed at all.



### TERMS AND CONDITIONS FOR COPYING, DISTRIBUTION AND MODIFICATION

- 0) This License applies to any program or other work which contains a notice placed by the copyright holder saying it may be distributed under the terms of this General Public License. The "Program", below, refers to any such program or work, and a "work based on the Program" means either the Program or any derivative work under copyright law: that is to say, a work containing the Program or a portion of it, either verbatim or with modifications and/or translated into another language. (Hereinafter, translation is included without limitation in the term "modification".) Each licensee is addressed as "you".

Activities other than copying, distribution and modification are not covered by this License; they are outside its scope. The act of running the Program is not restricted, and the output from the Program is covered only if its contents constitute a work based on the Program (independent of having been made by running the Program). Whether that is true depends on what the Program does.

- 1) You may copy and distribute verbatim copies of the Program's source code as you receive it, in any medium, provided that you conspicuously and appropriately publish on each copy an appropriate copyright notice and disclaimer of warranty; keep intact all the notices that refer to this License and to the absence of any warranty; and give any other recipients of the Program a copy of this License along with the Program. You may charge a fee for the physical act of transferring a copy, and you may at your option offer warranty protection in exchange for a fee.
- 2) You may modify your copy or copies of the Program or any portion of it, thus forming a work based on the Program, and copy and distribute such modifications or work under the terms of Section 1 above, provided that you also meet all of these conditions:
  - a) You must cause the modified files to carry prominent notices stating that you changed the files and the date of any change.

- b) You must cause any work that you distribute or publish, that in whole or in part contains or is derived from the Program or any part thereof, to be licensed as a whole at no charge to all third parties under the terms of this License.
- c) If the modified program normally reads commands interactively when run, you must cause it, when started running for such interactive use in the most ordinary way, to print or display an announcement including an appropriate copyright notice and a notice that there is no warranty (or else, saying that you provide a warranty) and that users may redistribute the program under these conditions, and telling the user how to view a copy of this License. (Exception: if the Program itself is interactive but does not normally print such an announcement, your work based on the Program is not required to print an announcement.)

These requirements apply to the modified work as a whole.

If identifiable sections of that work are not derived from the Program, and can be reasonably considered independent and separate works in themselves, then this License, and its terms, do not apply to those sections when you distribute them as separate works. But when you distribute the same sections as part of a whole which is a work based on the Program, the distribution of the whole must be on the terms of this License, whose permissions for other licensees extend to the entire whole, and thus to each and every part regardless of who wrote it.

Thus, it is not the intent of this section to claim rights or contest your rights to work written entirely by you; rather, the intent is to exercise the right to control the distribution of derivative or collective works based on the Program. In addition, mere aggregation of another work not based on the Program with the Program (or with a work based on the Program) on a volume of a storage or distribution medium does not bring the other work under the scope of this License.

- 3) You may copy and distribute the Program (or a work based on it, under Section 2) in object code or executable form under the terms of Sections 1 and 2 above provided that you also do one of the following:
  - a) Accompany it with the complete corresponding machine-readable source code, which must be distributed under the terms of Sections 1 and 2 above on a medium customarily used for software interchange; or,
  - b) Accompany it with a written offer, valid for at least three years, to give any third party, for a charge no more than your cost of physically performing source distribution, a complete machine-readable copy of the corresponding source code, to be distributed under the terms of Sections 1 and 2 above on a medium customarily used for software interchange; or,
  - c) Accompany it with the information you received as to the offer to distribute corresponding source code. (This alternative is allowed only for noncommercial distribution and only if you received the program in object code or executable form with such an offer, in accord with Subsection b above.)

The source code for a work means the preferred form of the work for making modifications to it. For an executable work, complete source code means all the source code for all modules it contains, plus any associated interface definition files, plus the scripts used to control compilation and installation of the executable. However, as a special exception, the source code distributed need not include anything that is normally distributed (in either source or binary form) with the major components (compiler, kernel, and so on) of the operating system on which the executable runs, unless that component itself accompanies the executable.

If distribution of executable or object code is made by offering access to copy from a designated place, then offering equivalent access to copy the source code from the same place counts as distribution of the source code, even though third parties are not compelled to copy the source along with the object code.

- 4) You may not copy, modify, sublicense, or distribute the Program except as expressly provided under this License. Any attempt otherwise to copy, modify, sublicense or distribute the Program is void, and will automatically terminate your rights under this License. However, parties who have received copies, or rights, from you under this License will not have their licenses terminated so long as such parties remain in full compliance.
- 5) You are not required to accept this License, since you have not signed it. However, nothing else grants you permission to modify or distribute the Program or its derivative works. These actions are prohibited by law if you do not accept this License. Therefore, by modifying or distributing the Program (or any work based on the Program), you indicate your acceptance of this License to do so, and all its terms and conditions for copying, distributing or modifying the Program or works based on it.
- 6) Each time you redistribute the Program (or any work based on the Program), the recipient automatically receives a license from the original licensor to copy, distribute or modify the Program subject to these terms and conditions. You may not impose any further restrictions on the recipients' exercise of the rights granted herein. You are not responsible for enforcing compliance by third parties to this License.
- 7) If, as a consequence of a court judgment or allegation of patent infringement or for any other reason (not limited to patent issues), conditions are imposed on you (whether by court order, agreement or otherwise) that contradict the conditions of this License, they do not excuse you from the conditions of this License.

If you cannot distribute so as to satisfy simultaneously your obligations under this License and any other pertinent obligations, then as a consequence you may not distribute the Program at all. For example, if a patent license would not permit royalty-free redistribution of the Program by all those who receive copies directly or indirectly through you, then the only way you could satisfy both it and this License would be to refrain entirely from distribution of the Program.

If any portion of this section is held invalid or unenforceable under any particular circumstance, the balance of the section is intended to apply and the section as a whole is intended to apply in other circumstances.

This section is intended to make thoroughly clear what is believed to be a consequence of the rest of this License.

- 8) If the distribution and/or use of the Program is restricted in certain countries either by patents or by copyrighted interfaces, the original copyright holder who places the Program under this License may add an explicit geographical distribution limitation excluding those countries, so that distribution is permitted only in or among countries not thus excluded. In such case, this License incorporates the limitation as if written in the body of this License.
- 9) The Free Software Foundation may publish revised and/or new versions of the General Public License from time to time. Such new versions will be similar in spirit to the present version, but may differ in detail to address new problems or concerns. Each version is given a distinguishing version number. If the Program specifies a version number of this License which applies to it and "any later version", you have the option of following the terms and conditions either of that version or of any later version published by the Free Software Foundation.  
If the Program does not specify a version number of this License, you may choose any version ever published by the Free Software Foundation.
- 10) If you wish to incorporate parts of the Program into other free programs whose distribution conditions are different, write to the author to ask for permission. For software which is copyrighted by the Free Software Foundation, write to the Free Software Foundation; we sometimes make exceptions for this. Our decision will be guided by the two goals of preserving the free status of all derivatives of our free software and of promoting the sharing and reuse of software generally.

### NO WARRANTY

- 11) BECAUSE THE PROGRAM IS LICENSED FREE OF CHARGE, THERE IS NO WARRANTY FOR THE PROGRAM, TO THE EXTENT PERMITTED BY APPLICABLE LAW. EXCEPT WHEN OTHERWISE STATED IN WRITING THE COPYRIGHT HOLDERS AND/OR OTHER PARTIES PROVIDE THE PROGRAM "AS IS" WITHOUT WARRANTY OF ANY KIND, EITHER EXPRESSED OR IMPLIED, INCLUDING, BUT NOT LIMITED TO, THE IMPLIED WARRANTIES OF MERCHANTABILITY AND FITNESS FOR A PARTICULAR PURPOSE. THE ENTIRE RISK AS TO THE QUALITY AND PERFORMANCE OF THE PROGRAM IS WITH YOU. SHOULD THE PROGRAM PROVE DEFECTIVE, YOU ASSUME THE COST OF ALL NECESSARY SERVICING, REPAIR OR CORRECTION.
- 12) IN NO EVENT UNLESS REQUIRED BY APPLICABLE LAW OR AGREED TO IN WRITING WILL ANY COPYRIGHT HOLDER, OR ANY OTHER PARTY WHO MAY MODIFY AND/OR REDISTRIBUTE THE PROGRAM AS PERMITTED ABOVE, BE LIABLE TO YOU FOR DAMAGES, INCLUDING ANY GENERAL, SPECIAL, INCIDENTAL OR CONSEQUENTIAL DAMAGES ARISING OUT OF THE USE OR INABILITY TO USE THE PROGRAM (INCLUDING BUT NOT LIMITED TO LOSS OF DATA OR DATA BEING RENDERED INACCURATE OR LOSSES SUSTAINED BY YOU OR THIRD PARTIES OR A FAILURE OF THE PROGRAM TO OPERATE WITH ANY OTHER PROGRAMS), EVEN IF SUCH HOLDER OR OTHER PARTY HAS BEEN ADVISED OF THE POSSIBILITY OF SUCH DAMAGES.

## END OF TERMS AND CONDITIONS

## How to Apply These Terms to Your New Programs

If you develop a new program, and you want it to be of the greatest possible use to the public, the best way to achieve this is to make it free software which everyone can redistribute and change under these terms.

To do so, attach the following notices to the program. It is safest to attach them to the start of each source file to most effectively convey the exclusion of warranty; and each file should have at least the "copyright" line and a pointer to where the full notice is found.

```
<one line to give the program's name and a brief idea of what it does.>
Copyright (C) <year> <name of author>
```

This program is free software; you can redistribute it and/or modify it under the terms of the GNU General Public License as published by the Free Software Foundation; either version 2 of the License, or(at your option) any later version.

This program is distributed in the hope that it will be useful, but WITHOUT ANY WARRANTY; without even the implied warranty of MERCHANTABILITY or FITNESS FOR A PARTICULAR PURPOSE.  
See the GNU General Public License for more details.

You should have received a copy of the GNU General Public License along with this program; if not, write to the Free Software Foundation, Inc., 51 Franklin St, Fifth Floor, Boston, MA 02110-1301 USA.

Also add information on how to contact you by electronic and paper mail.

If the program is interactive, make it output a short notice like this when it starts in an interactive mode:

```
Gnomovision version 69, Copyright (C) year name of author Gnomovision
comes with ABSOLUTELY NO WARRANTY; for details type 'show w'.
This is free software, and you are welcome to redistribute it under certain
conditions; type 'show c' for details.
```

The hypothetical commands 'show w' and 'show c' should show the appropriate parts of the General Public License. Of course, the commands you use may be called something other than 'show w' and 'show c'; they could even be mouse-clicks or menu items--whatever suits your program. You should also get your employer (if you work as a programmer) or your school, if any, to sign a "copyright disclaimer" for the program, if necessary. Here is a sample; alter the names:

```
Yoyodyne, Inc., hereby disclaims all copyright interest in the program
'Gnomovision' (which makes passes at compilers) written by James Hacker.
```

```
<signature of Ty Coon>, 1 April 1989
Ty Coon, President of Vice
```

This General Public License does not permit incorporating your program into proprietary programs. If your program is a subroutine library, you may consider it more useful to permit linking proprietary applications with the library. If this is what you want to do, use the GNU Lesser General Public License instead of this License.

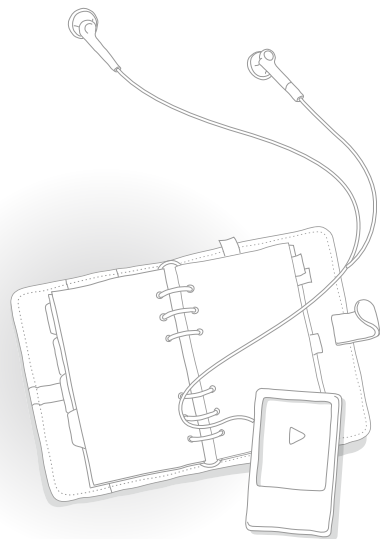
## Video for Linux Two header file

Copyright (C) 1999-2007 the contributors

Redistribution and use in source and binary forms, with or without modification, are permitted provided that the following conditions are met:

1. Redistributions of source code must retain the above copyright notice, this list of conditions and the following disclaimer.
2. Redistributions in binary form must reproduce the above copyright notice, this list of conditions and the following disclaimer in the documentation and/or other materials provided with the distribution.
3. The names of its contributors may not be used to endorse or promote products derived from this software without specific prior written permission.

THIS SOFTWARE IS PROVIDED BY THE NETBSD FOUNDATION, INC. AND CONTRIBUTORS "AS IS" AND ANY EXPRESS OR IMPLIED WARRANTIES, INCLUDING, BUT NOT LIMITED TO, THE IMPLIED WARRANTIES OF MERCHANTABILITY AND FITNESS FOR A PARTICULAR PURPOSE ARE DISCLAIMED. IN NO EVENT SHALL THE FOUNDATION OR CONTRIBUTORS BE LIABLE FOR ANY DIRECT, INDIRECT, INCIDENTAL, SPECIAL, EXEMPLARY, OR CONSEQUENTIAL DAMAGES (INCLUDING, BUT NOT LIMITED TO, PROCUREMENT OF SUBSTITUTE GOODS OR SERVICES; LOSS OF USE, DATA, OR PROFITS; OR BUSINESS INTERRUPTION) HOWEVER CAUSED AND ON ANY THEORY OF LIABILITY, WHETHER IN CONTRACT, STRICT LIABILITY, OR TORT (INCLUDING NEGLIGENCE OR OTHERWISE) ARISING IN ANY WAY OUT OF THE USE OF THIS SOFTWARE, EVEN IF ADVISED OF THE POSSIBILITY OF SUCH DAMAGE.





## Halogen Free Product

Samsung's Halogen Free Product means that an environmental friendly product does not contain Chlorine, Bromine Flame Retardants and PVC (poly vinyl chloride) material based on the IEC 61249-2-21 standard. This product also complies with EU RoHS Directive, which restricts the use of certain Hazardous Substances - Cadmium (Cd), Lead (Pb), Mercury (Hg), Hexavalent Chromium (Cr+6) as well.



## QUESTIONS OR COMMENTS?

COUNTRY	CALL	OR VISIT US ONLINE AT	WRITE
IN THE US	800-SAMSUNG (800-726-7864)	<a href="http://www.samsung.com/us">www.samsung.com/us</a>	Samsung Electronics America, Inc. 105 Challenger Road Ridgefield Park, NJ 07660-0511

## Free Manuals Download Website

<http://myh66.com>

<http://usermanuals.us>

<http://www.somanuals.com>

<http://www.4manuals.cc>

<http://www.manual-lib.com>

<http://www.404manual.com>

<http://www.luxmanual.com>

<http://aubethermostatmanual.com>

Golf course search by state

<http://golfingnear.com>

Email search by domain

<http://emailbydomain.com>

Auto manuals search

<http://auto.somanuals.com>

TV manuals search

<http://tv.somanuals.com>