



AH68-01728B (Rev 0.0)

SAMSUNG

YP-T4

Digital Audio Player
YP-T4

- MP3, WMA and ASF Playback
- Removable Storage Device
- Upgradable
- 15-Hour Continuous Play
- Voice Recording Function

Contents

Preparations

Safety Instructions	4
Features	6
Accessories	7
Location of Controls	8

Connection to Computer

Connecting the player to a PC	10
Manual Installation of the USB Driver	14
Using the removable storage	18
● Downloading/Uploading files	18
● Disconnecting the USB cable	19
● Formatting	20
Installing Music Studio	21
● To View Help on Music Studio	23

Basic Usage

Playing Music and Turning Off the Device	24
Adjusting the Volume/Hold Function	25
Recording Voice	26

Additional Usage

Loop Repeating	27
Using Navigation	28
Setting Playlist	29
Setting up MENU	30
Managing Files	31
● Deleting	31
● Formatting	32
Setting the Advanced Functions	33
Selecting the Playmode	34
Setting the EQ mode	35
Display	36
● Scroll Speed / Time	36
● Backlight	37
● Contrast / Tag / Language	38
Power Off Time	39
● Time / Sleep	39
Default Volume	40

Appendix




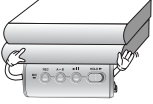

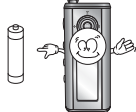
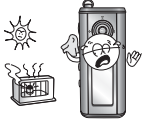


MENU Table	41
------------------	----

Customer Support

Troubleshooting	42
Specifications	44

Safety Instructions

Read and understand all the instructions to avoid injury to yourself and damage to the equipment.

<p>Do not expose to extreme temperatures (above 95°F or below 23°F). Do not expose to moisture.</p> 	<p>Do not apply excessive pressure to the device.</p> 	<p>Do not let any foreign matter spill into the device.</p> 
<p>Do not place heavy objects on top of the device.</p> 	<p>Do not expose to chemicals such as benzene and thinners.</p> 	<p>Remove batteries when the device is left unused for a long period of time.</p> 
<p>Do not expose to direct sunlight or heat sources.</p> 	<p>Do not store in dusty areas.</p> 	<p>Do not try to disassemble and repair the device yourself.</p> 

* Please be aware that we disclaim all responsibility for damages from loss of saved or recorded data due to breakdown, repair or other causes.

Earphones

Follow Traffic Safety Instructions

- Do not use the earphones while driving an automobile or riding a bicycle. It's not only dangerous, but also against the law.
- An accident may result if you turn up the volume of the earphones too high while walking down the street, especially when crossing at intersections.

Protect your ears

- Do not turn the volume up too high. Doctors warn against prolonged exposure to high volumes.
- Stop using the device or turn the volume down if you get ringing in your ears.

Ambient operating conditions

- Ambient temperature : 5°C ~ 35°C (41°F ~ 95°F)
- Humidity : 10% ~ 75%

Environmental Information

- Follow local guidelines for waste disposal when discarding packaging, batteries, and old electronic appliances.
- Your player is packaged with cardboard, polyethylene etc., and does not use any unnecessary materials.

Features

MP3, WMA and ASF Playback

- MP3 is an MPEG1 Layer3 audio format.
- WMA is a Microsoft Windows Media audio format.
- ASF is an advanced streaming file format.

Removable Storage Device

- You can easily copy and paste files to the player using Windows Explorer.

Upgradable

- You can upgrade the built-in programs when available.
Please check the home page (www.samsung.com) for upgrades.

15-Hour Continuous Play

- This unit uses one AAA/LR03 alkaline battery. Operation can last up to 15hours.
Actual playing time may vary according to the type and capacity of the battery.

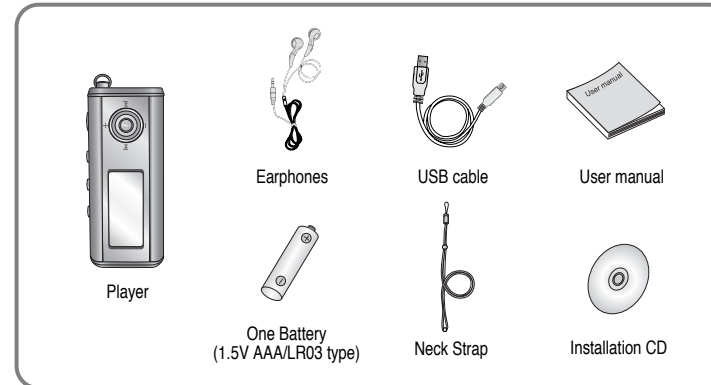
Voice Recording Function

- You can do a Voice Recording with high quality and use it for a conference.

Sound

- You can adjust the equalizer manually.

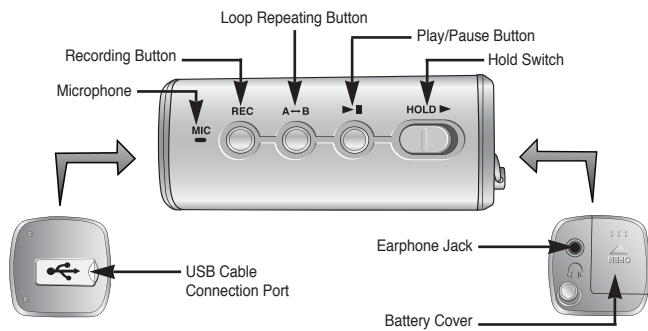
Accessories



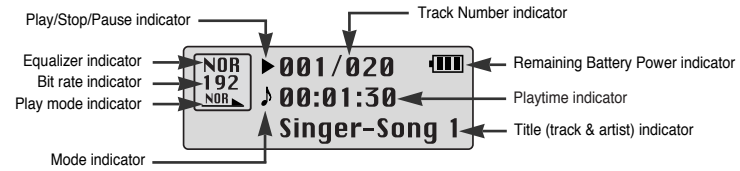
Model	YP-T4 H	YP-T4 V
Built-in memory	128MB	256MB

- The capacity of the useable built-in memory is less than indicated as the internal firmware uses a part of the memory as well.
- Design of accessories is subject to change, for the purposes of improvement, without notice.

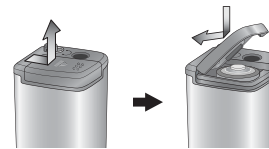
Location of Controls



Display



Inserting a Battery



1 Slide the cover in the direction of the arrow to open.

2 Insert a battery to the right poles +, - and push-close the cover in the direction the arrow as indicated.

Note

- Do not place heavy objects on the cover.

Connecting the player to a PC

System Requirements.

The PC system must meet the following specifications:

- Pentium 133MHz or greater.
- Windows 98SE/ME/2000/XP.
- 40MB of available hard disk space
- CD-ROM drive.
(double speed or greater)
- USB port (1.1) supported.
- DirectX 8.0 or above.

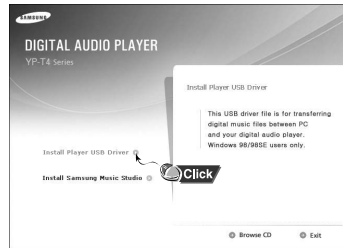
Note

- Install the operating system in Administrator Account mode for Windows 2000 or XP. Otherwise, installation will not be completed.
- Windows ME, 2000 and XP can recognize the driver without installing the provided program. However, you must install the program in order to format the player and upgrade firmware.
- If the YP-T4 program has not been installed in Windows 98, then it will not communicate with your removable disk. You must install the USB driver file first.

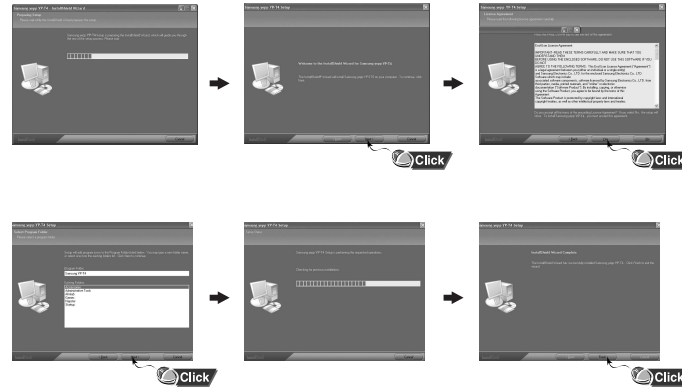
Before connecting the player to PC, make sure to install USB driver. If "Add New Hardware Wizard" appears, press the [Cancel] button and install the USB driver.

Installing software

- 1 Insert the Installation CD into the CD-ROM drive. Select [Install Player USB Driver].



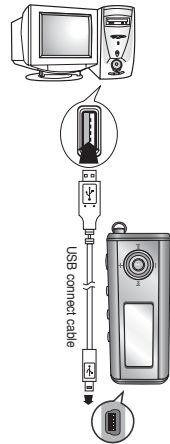
- 2 Follow the instructions in the window to complete the installation.



Connecting the player to a PC

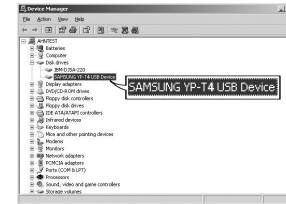
Connecting the player to a PC with a USB cable

- 3 Connect a USB cable to the USB port on the computer.
- 4 Connect the other end of a USB cable to the USB cable connection port on the bottom of the player, and press the ► button on the main unit.
 - If you disconnect the USB cable from your PC while implementing a command or initializing during USB driver installation, your PC may not function correctly.
- 5 The USB driver is installed with a message saying that it is searching for a new device. You may not see the display screen during installation. Go to the device manager to check that installation has been successfully completed.
- 6 Upon installation of the USB driver "Samsung YP-T4 USB Device" will appear in the [System Properties] → [Device Manager].



How to check the USB driver

- Windows 98/ME:
Control Panel → System → Device Manager → Disk Drives → Samsung YP-T4
- Windows 2000:
Control Panel → System → Hardware → Device Manager → Disk Drives → Samsung YP-T4 USB Device
- Windows XP:
Control Panel → System → Hardware → Device Manager → Disk Drives → Samsung YP-T4 USB Device



- 7 When the USB driver is not installed automatically, refer to the next page.

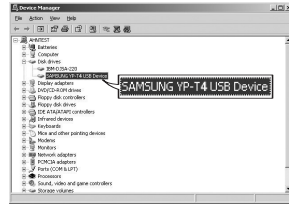
Manual Installation of the USB Driver

Go to "Downloading/Uploading files" on page 18 if the USB driver is in place.
Follow these steps if the USB driver is not in place :

When an error occurs during installation of the USB driver

1 Check the device manager.

- Windows 98/ME:
Control Panel → System → Device Manager
- Windows 2000 (Professional):
Control Panel → System → Hardware → Device Manager
- Windows XP (Professional):
Control Panel → System → Hardware → Device Manager



2 Check if there is a device listed with an exclamation point or a question mark (displayed as unknown device or USB device).

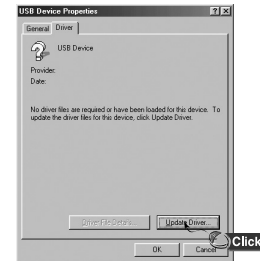
3 Double click on the device listed with an exclamation point or a question mark.

Note

- If you are using Windows 2000 and your version of Windows does not recognize the USB driver please download and install the latest service pack from windowsupdate.microsoft.com
- The installation method may vary depending on the type of PC or operating system. Contact your PC dealer or service center for installation information.
- If errors occur continuously when you install the USB driver, reconnect the USB cable after rebooting your system.

14

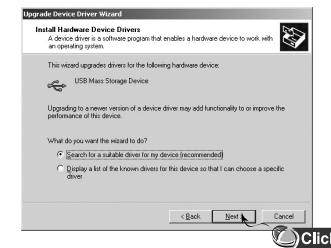
4 After selecting the driver, click [Update Driver].



5 Click [Next].



6 Select [Search for a suitable driver for my device] and then click [Next].



7 Click [Next] to finish.



15

Manual Installation of the USB Driver

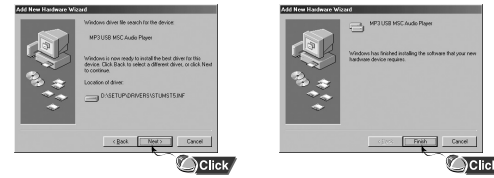
In Windows 98

Follow the instructions in the window to complete the installation.



USB driver location
[CD ROM]setup\Drivers

- You must reboot your computer to complete the installation.



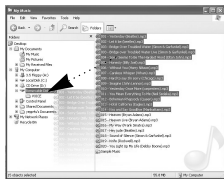
Note

- You cannot use it as a removable disk in Windows 98 if the YP-T4 program is not installed. Make sure to install the USB driver file first.

Using the removable storage

Downloading/Uploading files

- 1 Connect the player to your PC and turn it on.
- 2 Open Windows Explorer on PC.
- 3 Select the file to save and drag-and-drop it into the removable disk icon.
(In numerical, alphabetical order)



Notice

- The "WRITING/READING" message will appear during file download or upload. Disconnecting the USB cable while "WRITING/READING" is displayed may cause malfunction of the unit.
- The order of music files is not relative to the replay order when you select a Removable Disk in Windows Explorer.

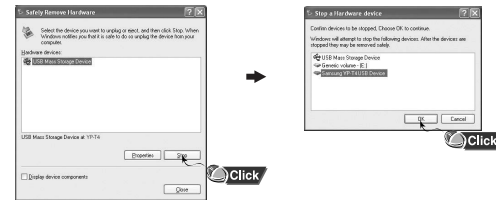
Disconnecting the USB cable

After completing the file transmission, you must disconnect the cable in the following way:

- 1 Double-click on the green arrow in the taskbar on the bottom right of the window.



- 2 When the [Stop a Hardware device] message appears, press the [OK] button and disconnect the USB cable.



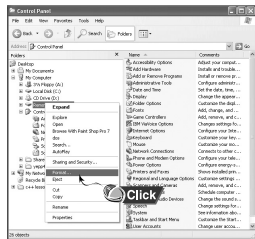
Note

- The green arrow is not displayed on the Task Bar in Windows 98 system.
If "READY" message is shown in Display window, please disconnect the USB cable.

Using the removable storage

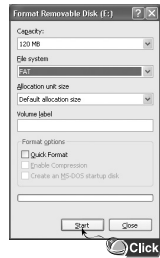
Formatting

1 Select the removable disk icon and click the right mouse button to select [Format].



2 Press the [Start] button.

- All saved files will be formatted.
- You can change the name of removable disk by selecting [Volume label].



Note

- By formatting, all previously preset menus will be initialized.
- Care must be taken as formatted files can not be recovered.

Installing Music Studio

1 Insert the Installation CD into CD-ROM drive. Select [Install Samsung Music Studio].



2 Select language



Continued...

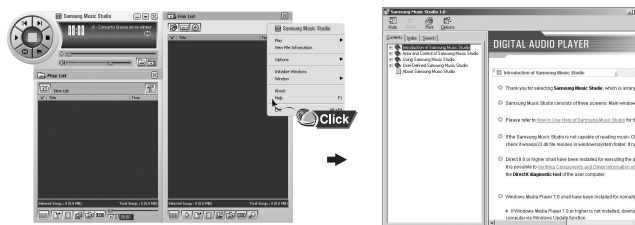
Installing Music Studio

- 3 Follow the instructions in the window to complete the installation.
- Please refer to Help for more information on how to use Music Studio.



To View Help on Music Studio

- Run Music Studio and press F1.
- Help will appear.
- Move the arrow to the top of Music Studio and right click on the mouse.
- The following selection window will appear.
- Click on Help and the Help window will appear.



Note

- Music recognition technology and related data are provided by Gracenote and Gracenote CDDB® Music Recognition ServiceSM.
- CDDB is a registered trademark of Gracenote. The Gracenote logo and logotype, the Gracenote CDDB logo and logotype, and the "Powered by Gracenote CDDB" logo are trademarks of Gracenote. Music Recognition Service and MRS are service marks of Gracenote.

Playing Music and Turning Off the Device

Turning Power On and Off

- Power On : Press the ►|| button to turn on the power.
- Power Off : Press and hold the ►|| button to turn off the power.

Playing Music

Press the ►|| button.

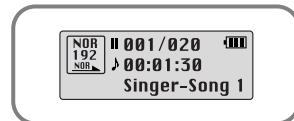
- Playback starts.



Pausing Music

Press the ►|| button to pause playback.

- If no buttons are pressed within 10 seconds (changes depending on settings), the player automatically powers off.
- While in Pause mode, press the ►|| button again to resume playback.



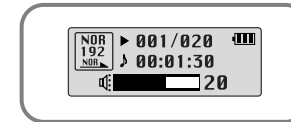
Note

- WMA files can be played only as music files with a compression rate of 48Kbps-192Kbps, that can be created in Windows Media Player (Version 8.0).
- The power off time can be set in the menu.

Adjusting the Volume/Hold Function

Adjusting the Volume

Press the - + key during playback to adjust the volume.




Note

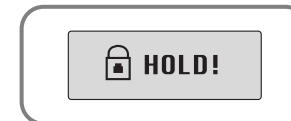
- Volume ranges from 00 to 30.

HOLD Function

In Hold mode, all buttons are disabled.

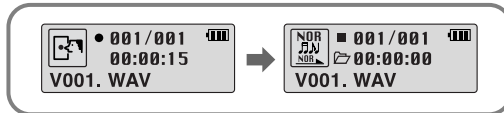
Slide the  switch on the player in the direction of the arrow.

- When the button is pressed, the "  HOLD!" message will appear on the display.



Recording Voice

- 1 Press the REC button to start voice recording.
- 2 If the REC button is pressed again, the recording stops and a voice file is created.



Note

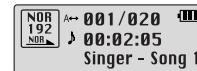
- Recording is performed in order (V001, V002, etc.) and files are saved in the WAV format after recording.
- If the Memory is full, the Voice Recording is stopped automatically.

Loop Repeating

Starting Point

While playing music files, press the A↔B button briefly at the beginning of the loop you want to set.

A↔ appears in the display.



Ending Point

Press the A↔B button briefly again to set the end of the loop.

A↔B appears in the display.
The loop is played repeatedly.



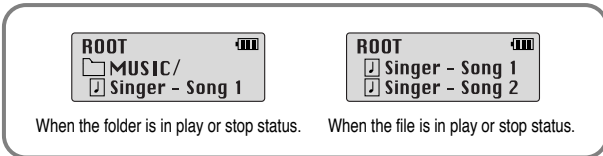
Note





- Press the A↔B button briefly to cancel the loop.
- Loop Repeat is automatically released if you Speed Search with the ⏮, ⏭ buttons.

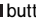
Using Navigation

You can easily search for files or switch modes using the Navigation function.

- 1 Press and hold the  button to move to Navigation mode.



- 2 Select the file or folder that you want to play.
 - : When moving to a higher-level folder.
 - : When moving to a lower-level folder.
 - : When moving to a file or folder in the same directory.
 - : Move to the next folder down. When there is not a lower folder, the selected file will be designated as part of the playlist.



- 3 Press the  button.
 - The selected file will be played.
 - If you select a folder, all the files in the selected folder will be played.

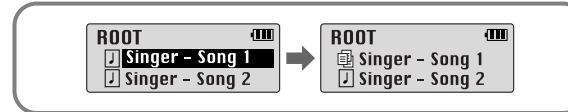
Note

- Press and hold the  key in Navigation mode to exit Navigation mode.


Setting Playlist

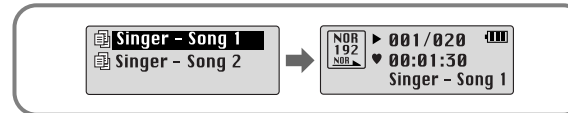
Setting Playlist

- Move to the file you want in Navigation mode and press the  key.
 - The selected file will be marked.
 - To release the playlist setting, move to the marked file in Navigation mode and press the  key again.



Playing Playlist


- 1 Press and hold the A<->B button in Music mode.
 - The Playlist you set will be displayed.
- 2 Move to the file you want to play and press the  button.
 - The selected file will be played.



Note

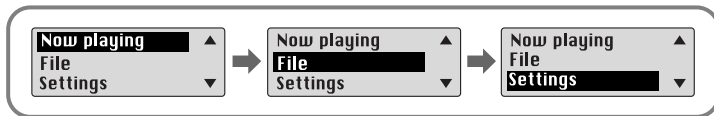
- Select PLAYLIST in File Delete (see "Deleting") to release all the playlists you set.

Setting up MENU

Press the  key to switch to MENU mode.

Use the   key to move and press the  key briefly to select the menu you want.

Press and hold the  key to exit the MENU mode.





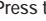
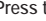
- Now playing : To check the track currently played.
- File : To delete or format files.
- Settings : To set the detailed function of the play.

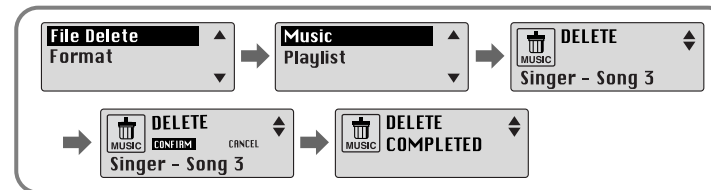
Note

- In MENU mode, no input for 15 seconds will cancel the MENU mode.

Managing Files

Deleting

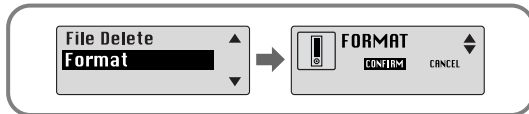
- 1 Select File in the MENU. (refer to "Setting up MENU")
- 2 In File, select File Delete and the mode the target file is in.
- 3 Use the   key to move to the file you want to delete, press the  key and select CONFIRM.
Press the  key briefly to exit the setting.



Managing Files

Formatting

- 1 Select File in the MENU. (refer to "Setting up MENU")
- 2 Select Format in File.
 - Formatting is performed if CONFIRM is selected.




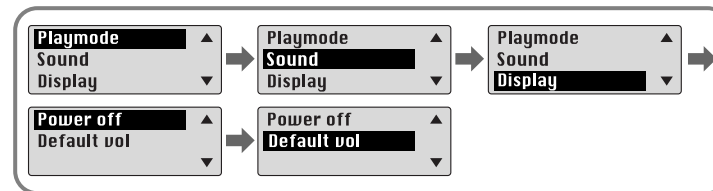
Note

- All files will be deleted when formatting the built-in memory.
- It is recommended that formatting be carried out on a PC that has the provided program installed as formatting in the Menu may take a long time.

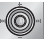
Setting the Advanced Functions

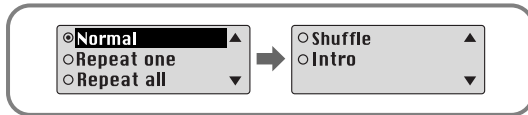
Settings

- 1 Select Settings in the MENU. (refer to "Setting up MENU")
- 2 In Settings, use the **-**, **+** key to move to the function you want and press the  key to select.
 - Use **←** key to move to upper menu.




Selecting the Playmode

- 1 Select Playmode in Settings.
- 2 In Play mode, use the **-**, **+** key to move to the mode you want and press the  key to select.



- Normal: To play all the tracks in order one time.
- Repeat one: To repeat one track.
- Repeat all: To repeat all tracks.
- Shuffle: To play tracks at random.
- Intro: To listen to the first part of all saved tracks for 10 seconds.

Setting the EQ mode

- 1 Select Sound in Settings.
- 2 In Sound, use the **-**, **+** key to move to the sound mode you want and press the  key.
 - If you want bass boost, select DBB.



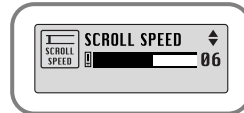
- 3 Select User and set the Bass/Treble if you want to set the tone yourself, apart from the specified tone.
 - Bass/Treble can be adjusted from 0 to 10 with the **-**, **+** key.

Display

Select Display in Settings.

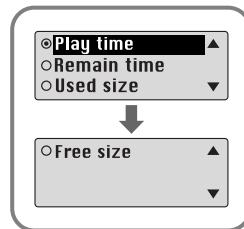
Scroll Speed

- Use the **-**, **+** key to set the scroll speed.
- The setting range for the scroll speed, which adjusts the speed of the track title flow, is 0 to 10.



Time

- Play time: Displays the current play time
- Remain time: Displays the remaining play time
- Used size: Displays the size of memory used.
- Free size: Displays the remaining memory



Backlight

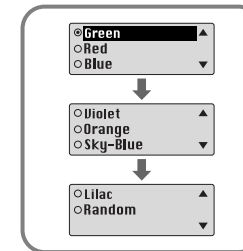
[Light Time - LCD]

- Use the **-**, **+** key to set the LCD Light-Off time.
- The setting range for Light-On Time is 0 to 10 seconds.
- When set to On, the Light stays on continuously.



[LCD color]

- Use the **-**, **+** key to select the LCD color you want, out of 7 colors.



Note

- The light does not illuminate when the residual battery level is insufficient.

Display

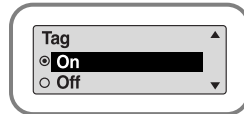
Contrast

- Use the **-**, **+** key to set the contrast.
- The setting range for the contrast, which adjusts the brightness of the screen, is from 0 to 10.



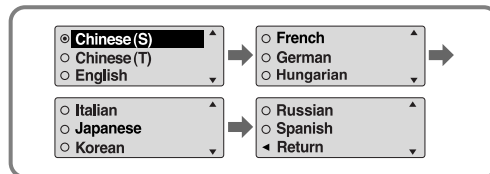
Tag

- Use the **-**, **+** key to select Tag On or Off.
- On: Display the Tag information if the music file has Tag information. Display the file name if the music file has no Tag information.
- Off: Display the name of music file.



Language

- Use the **-**, **+** key to select the language for displaying Tag information.
- **Chinese(S)** → **Chinese(T)** → **English** → **French** → **German** → **Hungarian**
Italian → **Japanese** → **Korean** → **Russian** → **Spanish**



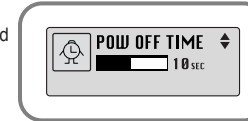
38

Power Off Time

Select Power off in Settings.

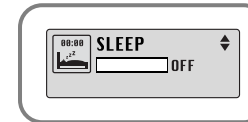
Time

- Use the **-**, **+** key to set the Power-Off time.
- You can set the time from 0 to 1 minute. If no key is pressed after play stops, the unit will automatically turn off after the time you set.
- When set to OFF, the power does not turn off automatically.



Sleep

- Use the **-**, **+** key to set the Sleep time.
- 30, 60, 90 and 120 minutes are available for sleep time, and it will automatically turn off after the time you set.
- When set to OFF, the power does not turn off automatically.



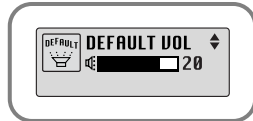
39

Default Volume

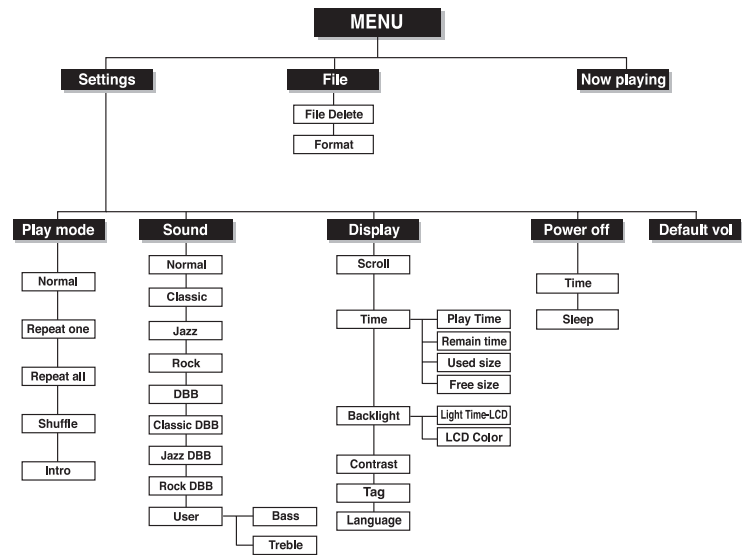
Select Default vol in Settings.


Default vol

- Use the **←**, **→** key to set the default volume value.
- It is possible to set the default volume to a value between 0 and 25(MAX).
If the power is turned on again after having adjusted the volume above the default value, music is played at the default volume.
- If the power is turned on again after the volume was set to within the default value, the music is replayed at the previously played volume.



MENU Table



- Use the  key to move and select.

Troubleshooting

The software doesn't work

- Refer to the recommended PC specifications.

The player does not work and the LCD displays nothing.

- Check the battery capacity
- Check to see if the battery is inserted to the right poles (+ , -)

In PLAY mode, music is not played after pressing the ►|| button

- Check to see if MP3 or WMA files are saved in the built-in memory.
- Check to see if the HOLD button is locked.

Files cannot be downloaded.

- Check to see if the driver is installed correctly in the computer.
- Check the connection between player and computer.
- Check and/or replace the battery, turn on the player's power.
- Operating system limits the number of files you can save.
Please save your music files by creating a subfolder.
- Check if the memory is full.

Backlight does not work.

- Check the backlight setup.
- When the battery power is low, the backlight will go out.

The buttons do not work.

- Check setting of Hold switch.
- Remove the battery once and then insert it again.

The player keeps being turned off.

- In Stop mode, the power is automatically turned off after ten seconds (changes depending on settings).
- Check to see if there are files saved in it.

Something's wrong with play time displayed during Play mode.

- "VBR SONG" message is displayed while VBR (Variable Bit Rate) file is playing.

LCD window is dark

- Check Contrast

Specifications

Model	YP-T4
Built-in Memory capacity	128MB(YP-T4 H), 256MB(YP-T4 V)
Voltage	1.5V X 1 (AAA/LR03 size alkaline battery)
Playing time	lasts up to 15hours (Alkaline battery, MP3 128Kbps, Vol level 20)
Dimensions/Weight	23 X 54 X23 mm / 23 g (without battery)
Case	Plastic/Aluminum
Noise Ratio	80dB with 20KHz LPF
Earphones Jack Output Power	5mW / CH (16Ω)
Output Frequency Range	20Hz~20KHz
Operating Temperature Range	-5 ~ +35°C(23~95°F)
File Support	MPEG1/2/2.5 Layer3(8Kbps ~ 320Kbps, 8KHz ~ 48KHz) WMA, ASF(48Kbps ~ 192Kbps, 8KHz ~ 48KHz)

The product unit accompanying this user manual is licensed under certain intellectual property rights of certain third parties. This license is limited to private non-commercial use by end-user consumers for licensed contents. No rights are granted for commercial use. The license does not cover any product unit other than this product unit and the license does not extend to any unlicensed product unit or process conforming to ISO/IEC 11172-3 or ISO/IEC 13818-3 used or sold in combination with this product unit. The license only covers the use of this product unit to encode and/or decode audio files conforming to the ISO/IEC 11172-3 or ISO/IEC 13818-3. No rights are granted under this license for product features or functions that do not conform to the ISO/IEC 11172-3 or ISO/IEC 13818-3.

MEMO

Free Manuals Download Website

<http://myh66.com>

<http://usermanuals.us>

<http://www.somanuals.com>

<http://www.4manuals.cc>

<http://www.manual-lib.com>

<http://www.404manual.com>

<http://www.luxmanual.com>

<http://aubethermostatmanual.com>

Golf course search by state

<http://golfingnear.com>

Email search by domain

<http://emailbydomain.com>

Auto manuals search

<http://auto.somanuals.com>

TV manuals search

<http://tv.somanuals.com>