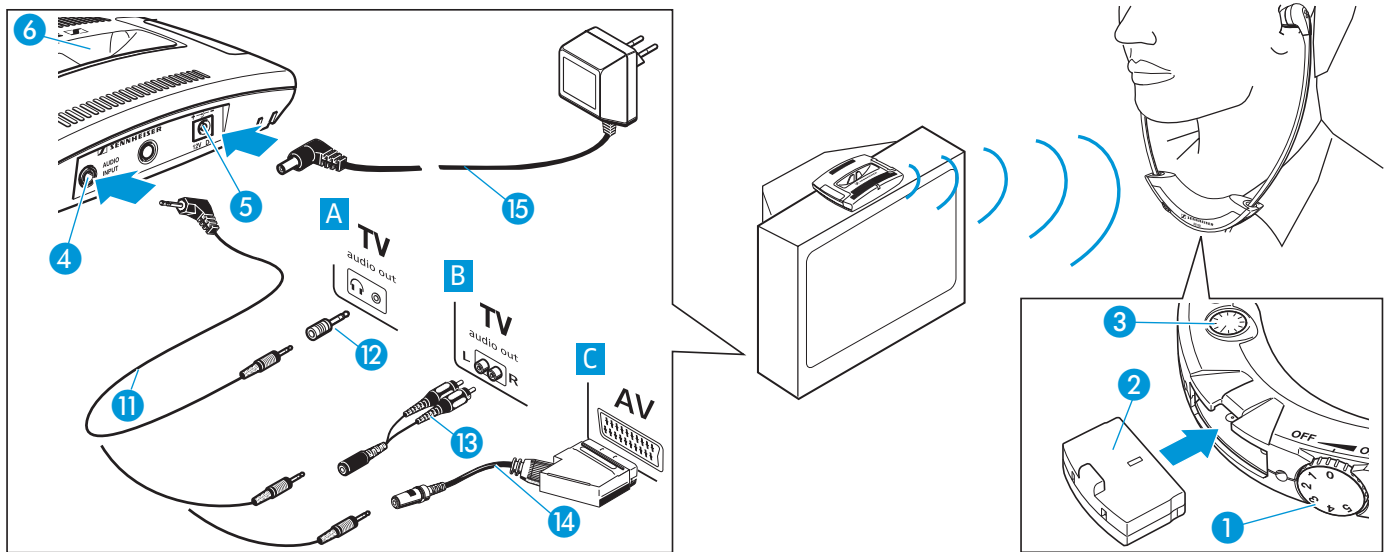


Quick instructions Set 55 TV Set 50 TV



Connecting the system components

- ▶ Plug in one end of the connecting cable **11** to the socket on your sound source (e.g. television). If necessary, use one of the adapters **12**, **13** or **14** (not included). Plug in the other end of the connecting cable **11** to the blue socket **4** on the transmitter.
- ▶ Connect the mains unit **15** to the transmitter **5** and to the mains.
- ▶ Place the receiver into the transmitter's charging compartment **6**.
- ▶ Before you use the rechargeable battery **2** for the first time, charge it for at least 14 hours.
- ▶ Adjust the volume of your sound source to a sufficient (medium) level.

Switching on and using the stethoset receiver

- ▶ Turn the volume control **1** in the direction of "ON" until it clicks.
- ▶ First adjust the volume to a low level. This protects your hearing from damage. Then put the receiver on and adjust the volume to a comfortable level.
- ▶ Use the balance control **3** to adjust the volume between the left and right ear.
- ▶ If you cannot hear anything through the receiver, increase the volume of your sound source.

Switching off the stethoset receiver

- ▶ To switch the receiver off, turn the volume control **1** in the direction of "OFF" until it clicks.

Charging the stethoset receiver

- ▶ Switch the receiver off. Place the receiver into the transmitter's charging compartment **6** without exerting too much pressure. With a fully charged battery, the operating time is approx. 9 hours.

For details on the use of the Set 50 TV/Set 55 TV, please refer to the enclosed operating instructions.

Free Manuals Download Website

<http://myh66.com>

<http://usermanuals.us>

<http://www.somanuals.com>

<http://www.4manuals.cc>

<http://www.manual-lib.com>

<http://www.404manual.com>

<http://www.luxmanual.com>

<http://aubethermostatmanual.com>

Golf course search by state

<http://golfingnear.com>

Email search by domain

<http://emailbydomain.com>

Auto manuals search

<http://auto.somanuals.com>

TV manuals search

<http://tv.somanuals.com>