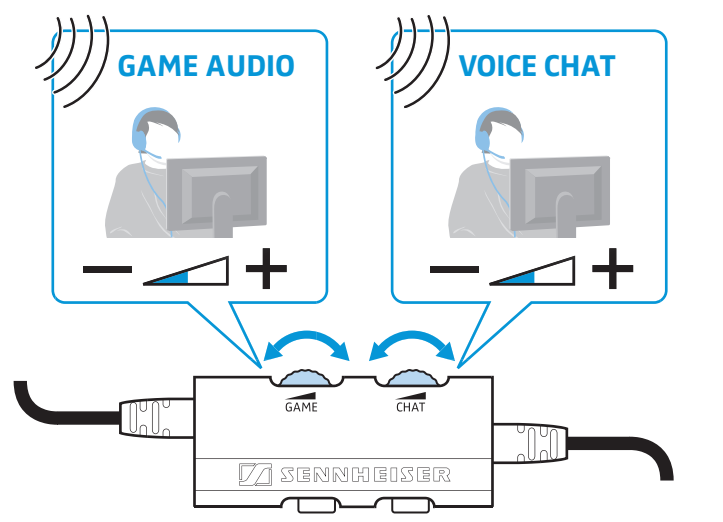
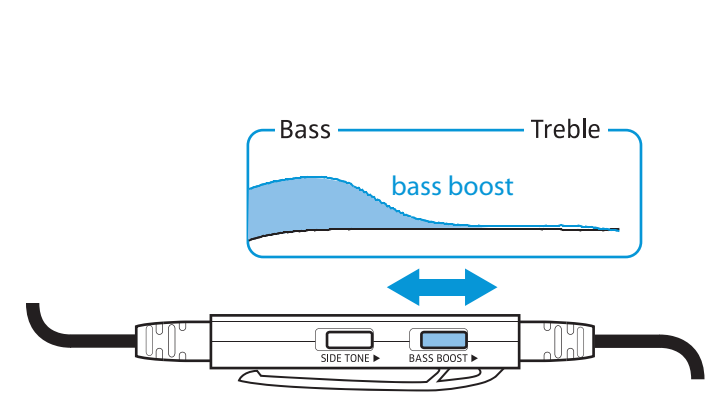


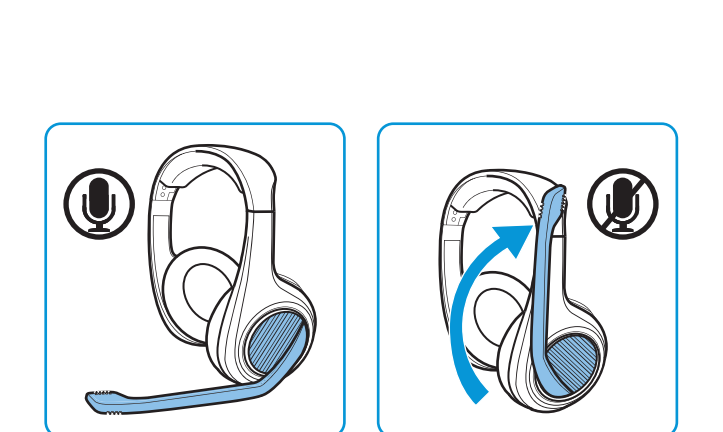
A **Game/Chat audio adjustment** | Spiel-/Chat-Lautstärke anpassen | Régler le volume du jeu/chat | Ajustar el volumen del juego/chat | Adattare il volume giochi/chat | Volume voor spelletjes/chatten aanpassen | Regular o volume para jogos/chat



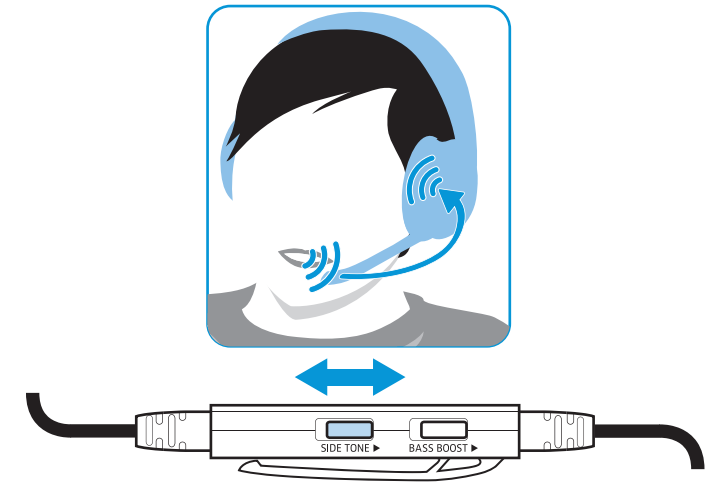
B **Bass boost on/off** | Bassanhebung ein-/ausschalten | Activer/désactiver l'accentuation des graves | Activar/desactivar el realce de graves | Attivazione/disattivazione dell'elevazione dei bassi | Basversterking in-/uitschakelen | Activar/desactivar acentuação de graves



C **Automatic mic mute** | Mikrofon automatisch stummschalten | Muting automatique du microphone | Silenciar el micrófono automáticamente | Silenziare automaticamente il microfono | Microfoon automatisch op mute schakelen | Activar automaticamente o modo de silêncio do microfone

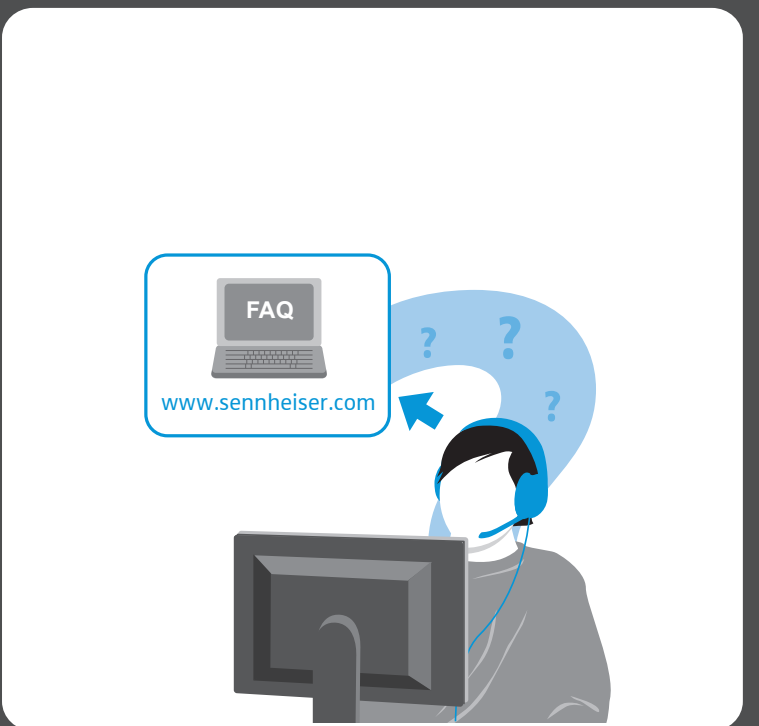


D **Side tone on/off** | Side tone ein-/ausschalten | Activer/désactiver le sidetone | Activar/desactivar el tono lateral | Attivare/disattivare il side-tone | Side tone in-/uitschakelen | Ligar/desligar Side tone



Sennheiser Communications A/S
Langager 6, 2680 Solrød Strand, Denmark

Printed in China
Publ. 06/12
A01

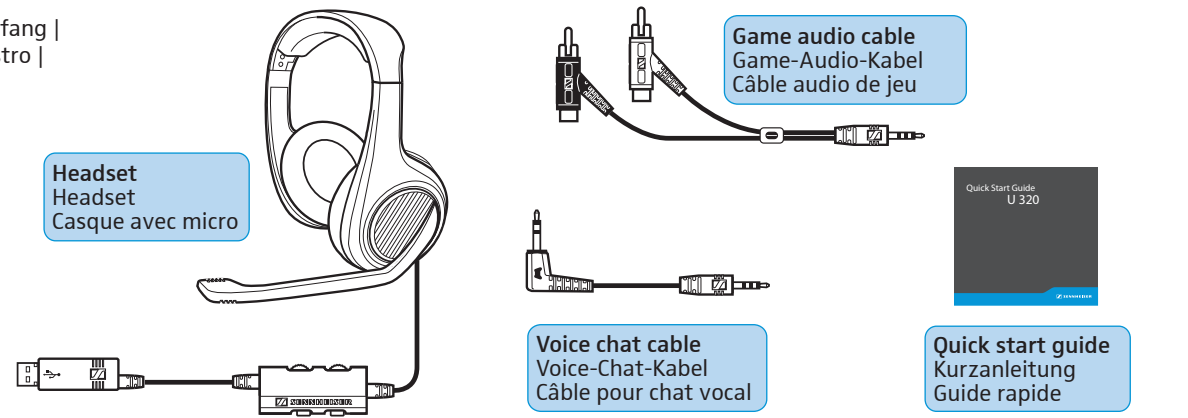


PS3 is a trademark of Sony Computer Entertainment Inc. Microsoft, Xbox, Xbox 360, and Xbox Live are either registered trademarks or trademarks of Microsoft Corporation in the U.S. and/or other countries.

Quick Start Guide U 320

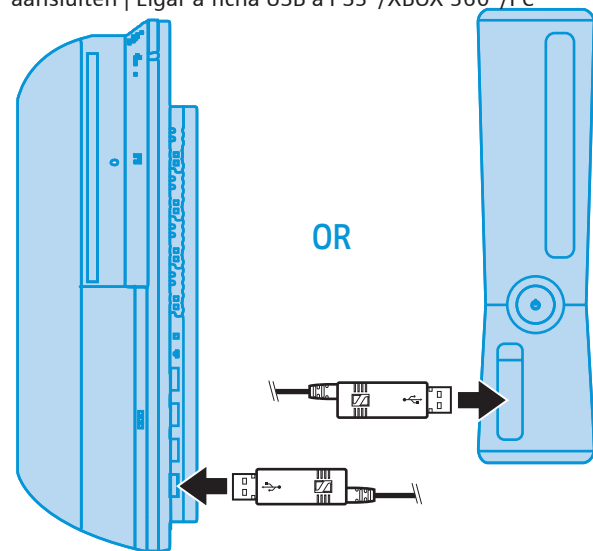


Packaging includes | Lieferumfang | Contenu | Volumen de suministro | Dotazione | Omvang levering | Itens fornecidos

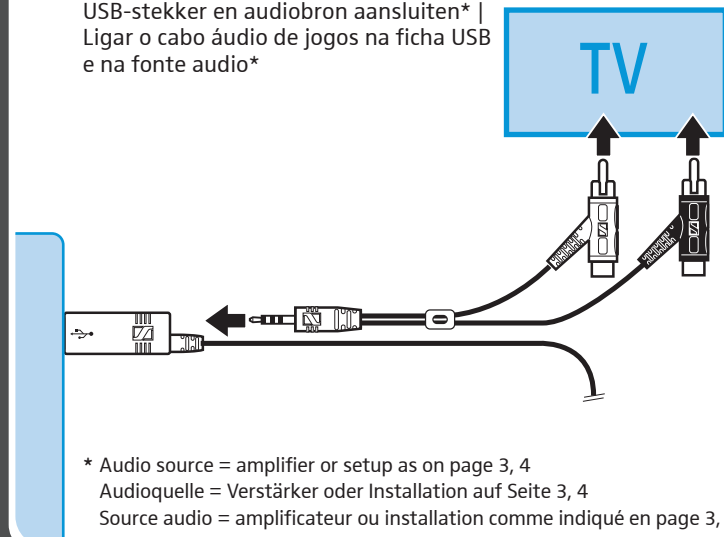


Step by step guide

1 Insert the USB plug into the PS3®/XBOX 360®/PC | USB-Stecker an PS3®/XBOX 360®/PC anschließen | Insérer la fiche USB dans la PS3®/XBOX 360®/le PC | Enchufe el conector USB en la PS3®/XBOX 360®/PC | Collegare il connettore USB su PS3®/XBOX 360®/PC | De USB-stekker op de PS3®/XBOX 360®/PC aansluiten | Ligar a ficha USB a PS3®/XBOX 360®/PC



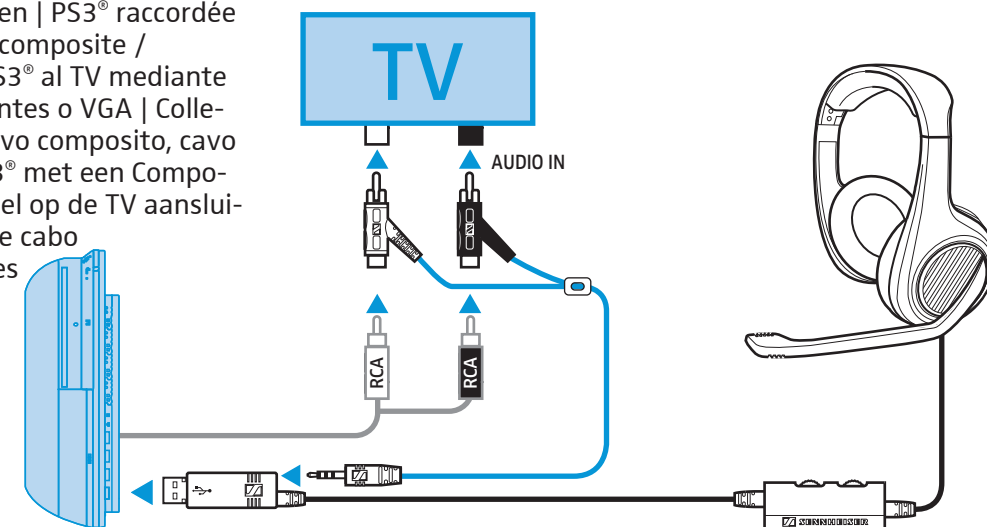
2 Connect the game audio cable to the USB plug & audio source* | Game-Audio-Kabel an USB-Stecker und Audioquelle anschließen* | Connecter le câble audio de jeu à la fiche USB et la source audio* | Conecte el cable Game-Audio al conector USB y a la fuente de audio* | Collegare il cavo giochi/audio al connettore USB e alla sorgente audio* | De Game-audiokabel op de USB-stekker en audiobron aansluiten* | Ligar o cabo áudio de jogos na ficha USB e na fonte áudio*



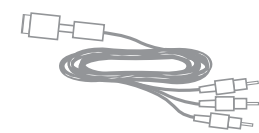
* Audio source = amplifier or setup as on page 3, 4
Audioquelle = Verstärker oder Installation auf Seite 3, 4
Source audio = amplificateur ou installation comme indiqué en page 3, 4

PS3® connection diagram

PS3® connected to TV via Composite / Component / VGA cable | PS3® über Composite-, Komponenten- oder VGA-Kabel an TV anschließen | PS3® raccordée au téléviseur à l'aide d'un câble composite / composant / VGA | Conecte la PS3® al TV mediante el cable Composite, de componentes o VGA | Collegare la PS3® alla TV mediante cavo composito, cavo componenti o cavo VGA | De PS3® met een Composite-, componenten- of VGA-kabel op de TV aansluiten | Ligar a PS3® à TV através de cabo composto, cabo por componentes ou cabo VGA

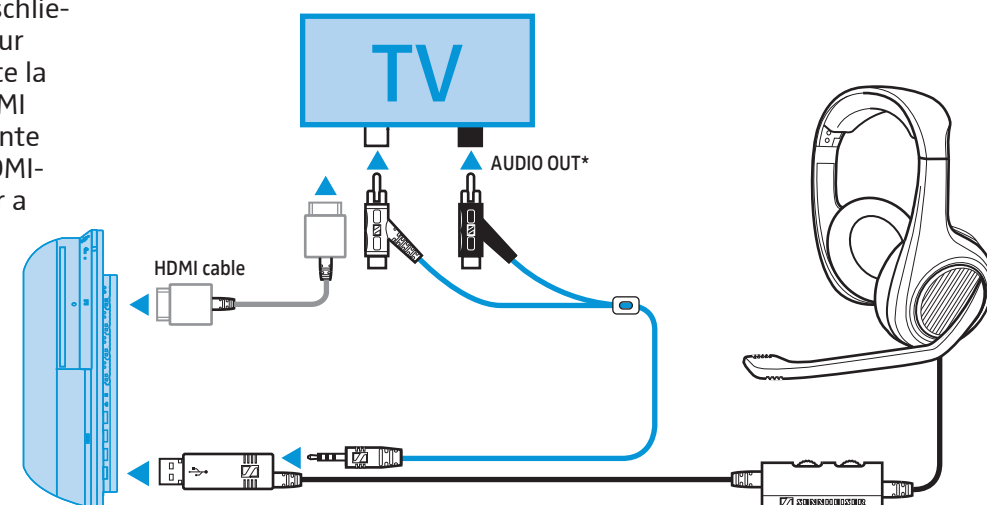


PS3® connected to TV via HDMI cable | PS3® über HDMI-Kabel an TV anschließen | PS3® raccordée au téléviseur à l'aide d'un câble HDMI | Conecte la PS3® al TV mediante el cable HDMI | Collegare la PS3® alla TV mediante cavo HDMI | De PS3® met een HDMI-kabel op de TV aansluiten | Ligar a PS3® à TV através do cabo HDMI



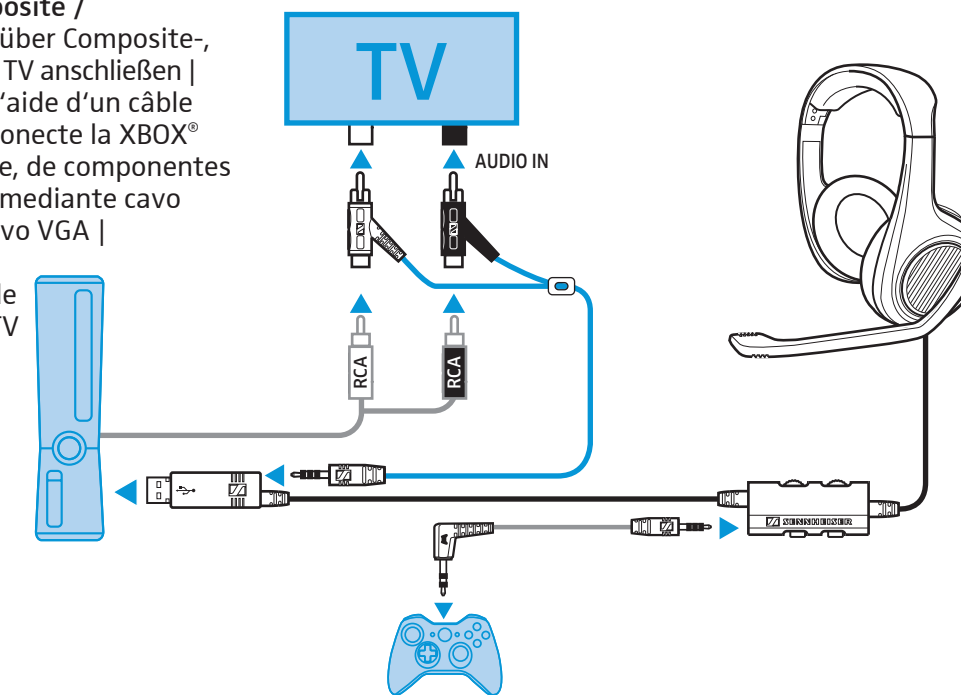
* PS3 AV cable adapter is needed if your TV doesn't provide audio out

* Please go to your TV's menu and enable the audio output function

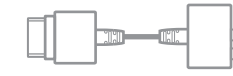


XBOX 360® connection diagram

XBOX® connected to TV via Composite / Component / VGA cable | XBOX® über Composite-, Komponenten- oder VGA-Kabel an TV anschließen | XBOX® raccordée au téléviseur à l'aide d'un câble composite / composant / VGA | Conecte la XBOX® al TV mediante el cable Composite, de componentes o VGA | Collegare l'XBOX® alla TV mediante cavo composito, cavo componenti o cavo VGA | De XBOX® met een Composite-, componenten- of VGA-kabel op de TV aansluiten | Ligar a XBOX® à TV através de cabo composto, cabo por componentes ou cabo VGA

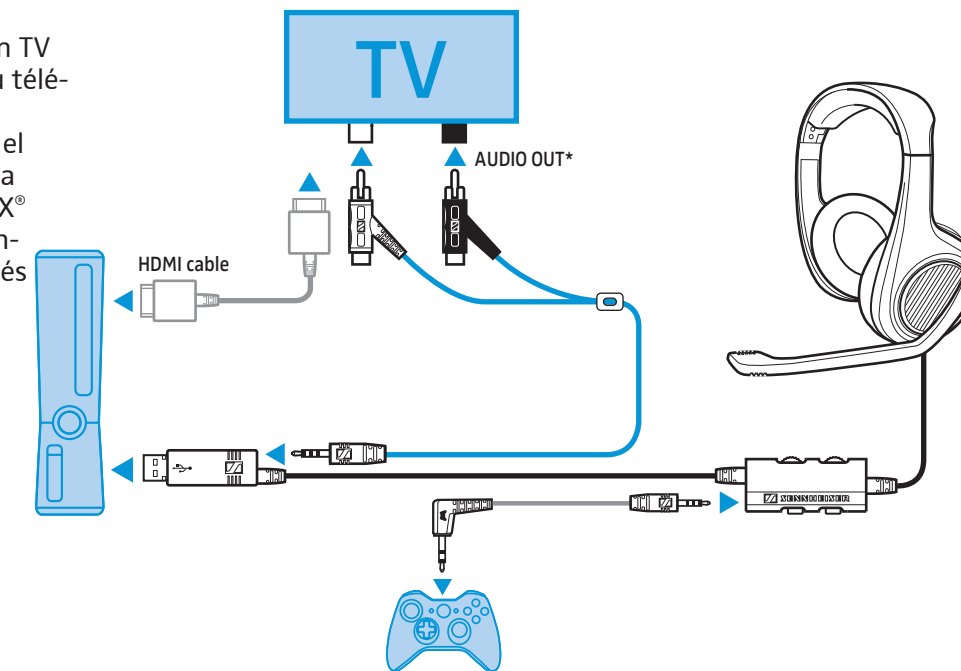


XBOX® connected to TV via HDMI cable | XBOX® über HDMI-Kabel an TV anschließen | XBOX® raccordée au téléviseur à l'aide d'un câble HDMI | Conecte la XBOX® al TV mediante el cable HDMI | Collegare l'XBOX® alla TV mediante cavo HDMI | De XBOX® met een HDMI-kabel op de TV aansluiten | Ligar a XBOX® à TV através do cabo HDMI



* XBOX audio adapter is needed if your TV doesn't provide audio out

* Please go to your TV's menu and enable the audio output function



Free Manuals Download Website

<http://myh66.com>

<http://usermanuals.us>

<http://www.somanuals.com>

<http://www.4manuals.cc>

<http://www.manual-lib.com>

<http://www.404manual.com>

<http://www.luxmanual.com>

<http://aubethermostatmanual.com>

Golf course search by state

<http://golfingnear.com>

Email search by domain

<http://emailbydomain.com>

Auto manuals search

<http://auto.somanuals.com>

TV manuals search

<http://tv.somanuals.com>