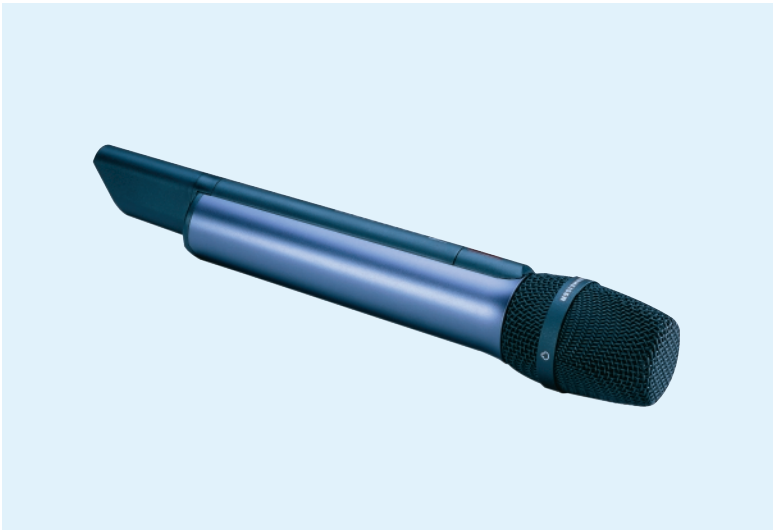


# SKM 5000

## RF Wireless Systems | 5000 Series Hand-Held Transmitters



### Common Features

- Interchangeable microphone heads: 5 condenser capsules and 1 dynamic capsule
- Battery status transmitted to suitable receivers
- Quick change accupack or battery pack
- Sensitivity switchable in 5 steps
- HiDyn *plus*<sup>TM</sup> noise reduction system
- 16 switchable carrier frequencies in a 24 MHz window, PLL-controlled
- MZQ 5000 stand mount included in the delivery

The battery box/accupack and microphone head are not included in the delivery. Please order separately!

### Recommended Accessories

- |   |                 |
|---|-----------------|
| ■ B 5000-1 battery box  | Cat. No. 005273 |
| ■ BA 5000-1 accupack (incl. charging adaptor)                     | Cat. No. 005274 |
| ■ L 50 charger for 2 accupacks                                    | Cat. No. 003554 |
| ■ ME 5005 condenser mic head, super-cardioid                      | Cat. No. 003760 |
| ■ ME 5005 e condenser mic head, super-cardioid                    | Cat. No. 005249 |
| ■ ME 5004 condenser mic head, cardioid                            | Cat. No. 003762 |
| ■ ME 5009 condenser mic head, wide cardioid                       | Cat. No. 003763 |
| ■ ME 5002 condenser mic head, omni                                | Cat. No. 003761 |
| ■ MD 5005 dynamic mic head, super-cardioid                        | Cat. No. 003823 |
| ■ KK 104 S (Neumann) condenser mic head, cardioid                 |                 |
| ■ KK 105 S (Neumann) condenser mic head, super-cardioid           |                 |
| ■ KEN 5000 identification rings, colour-coded (for mic heads)     | Cat. No. 053246 |
| ■ MZQ 5000 stand mount  | Cat. No. 050493 |
| ■ MZW 5000 ant foam windshield, anthracite                        | Cat. No. 003824 |
| ■ MZW 5000 bl foam windshield, blue (with 5 identification rings) | Cat. No. 003825 |
| ■ MZW 5000 ye ditto, yellow                                       | Cat. No. 003826 |
| ■ MZW 5000 gr ditto, green  | Cat. No. 003827 |
| ■ MZW 5000 rd ditto, red  | Cat. No. 003828 |
| ■ MZW 5000 wt ditto, white  | Cat. No. 003829 |

### Technical Data SKM 5000 UHF-a

RF output power .....	50 mW (-3 dB)
Transmission frequencies .....	16
Frequency range .....	450-960 MHz
Switching bandwidth .....	24 MHz
Modulation .....	wideband FM
Nominal/peak deviation .....	± 40 kHz / ± 56 kHz
Noise reduction system .....	HiDyn <i>plus</i> <sup>TM</sup>
AF frequency response .....	70-20,000 Hz
Signal-to-noise ratio .....	>117 dB(A) <sub>rms</sub>
THD (at nominal deviation) .....	< 1 % (typ. 0.3 %)
Sensitivity .....	adjustable in 5 steps of 10 dB
Power supply .....	1. B 5000-1 battery box 2. BA 5000-1 accupack
Operating time .....	1. B 5000-1 > 4.5 hrs 2. BA 5000-1 > 6 hrs
Dimensions .....	length: 257 mm, Ø: 44 mm
Weight incl. power pack .....	approx. 220 g

### Technical Data SKM 5000 VHF-C

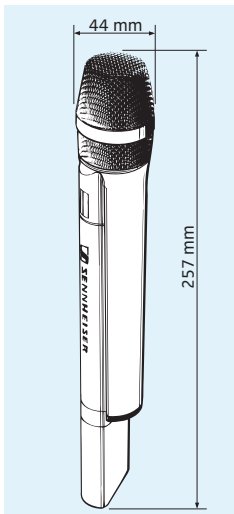
RF output power .....	50 mW (-3 dB)
Transmission frequencies .....	16
Frequency range .....	138-250 MHz
Switching bandwidth .....	7 MHz
Modulation .....	wideband FM
Nominal/peak deviation .....	± 40 kHz / ± 56 kHz
Noise reduction system .....	HiDyn <i>plus</i> <sup>TM</sup>
AF frequency response .....	70-20,000 Hz
Signal-to-noise ratio .....	>117 dB(A) <sub>rms</sub>
THD (at nominal deviation) .....	< 1 % (typ. 0.3 %)
Sensitivity .....	adjustable in 5 steps of 10 dB
Power supply .....	1. B 5000-1 battery box 2. BA 5000-1 accupack
Operating time .....	1. B 5000-1 > 4.5 hrs 2. BA 5000-1 > 6 hrs
Dimensions .....	length: 257 mm, Ø: 44 mm
Weight incl. power pack .....	approx. 220 g

### Product Variants

■ SKM 5000-UHF-A: 450-570 MHz	Cat. No. 005541
■ SKM 5000-UHF-B: 550-690 MHz	Cat. No. 005542
■ SKM 5000-UHF-C: 670-820 MHz	Cat. No. 005543
■ SKM 5000-UHF-D: 800-960 MHz	Cat. No. 005380
■ SKM 5000-UHF-A-A: 450-562 MHz	Cat. No. 005546
■ SKM 5000-UHF-A-B: 538-692 MHz	Cat. No. 005547
■ SKM 5000-UHF-A-C: 668-812 MHz	Cat. No. 005548
■ SKM 5000-UHF-A-D: 788-960 MHz	Cat. No. 005382
■ SKM 5000-UHF-N-A: 450-562 MHz	Cat. No. 009448
■ SKM 5000-UHF-N-B: 538-692 MHz	Cat. No. 009449
■ SKM 5000-UHF-N-C: 668-812 MHz	Cat. No. 009450
■ SKM 5000-UHF-N-D: 788-960 MHz	Cat. No. 009451
■ SKM 5000-UHF-N-BK-A: 450-562 MHz	Cat. No. 009452
■ SKM 5000-UHF-N-BK-B: 538-692 MHz	Cat. No. 009453
■ SKM 5000-UHF-N-BK-C: 668-812 MHz	Cat. No. 009454
■ SKM 5000-UHF-N-BK-D: 788-960 MHz	Cat. No. 009455
■ SKM 5000-UHF-C-A: 450-570 MHz	Cat. No. 005461
■ SKM 5000-UHF-C-B: 550-690 MHz	Cat. No. 005544
■ SKM 5000-UHF-C-C: 670-820 MHz	Cat. No. 005545
■ SKM 5000-UHF-C-D: 800-960 MHz	Cat. No. 005381

# SKM 5000

## RF Wireless Systems | 5000 Series Hand-Held Transmitters



SKM 5000 dimensions

### Technical Data ME 5005e/ME 5005

Transducer principle ..... condenser  
 Pick-up pattern ..... super-cardioid  
 Max. SPL ..... 158 dB / 154 dB

### Technical Data ME 5004

Transducer principle ..... condenser  
 Pick-up pattern ..... cardioid  
 Max. SPL ..... 139 dB

### Technical Data ME 5009

Transducer principle ..... condenser  
 Pick-up pattern ..... wide cardioid  
 Max. SPL ..... 140 dB

### Technical Data ME 5002

Transducer principle ..... condenser  
 Pick-up pattern ..... omni-directional  
 Max. SPL ..... 138 dB

### Technical Data MD 5005

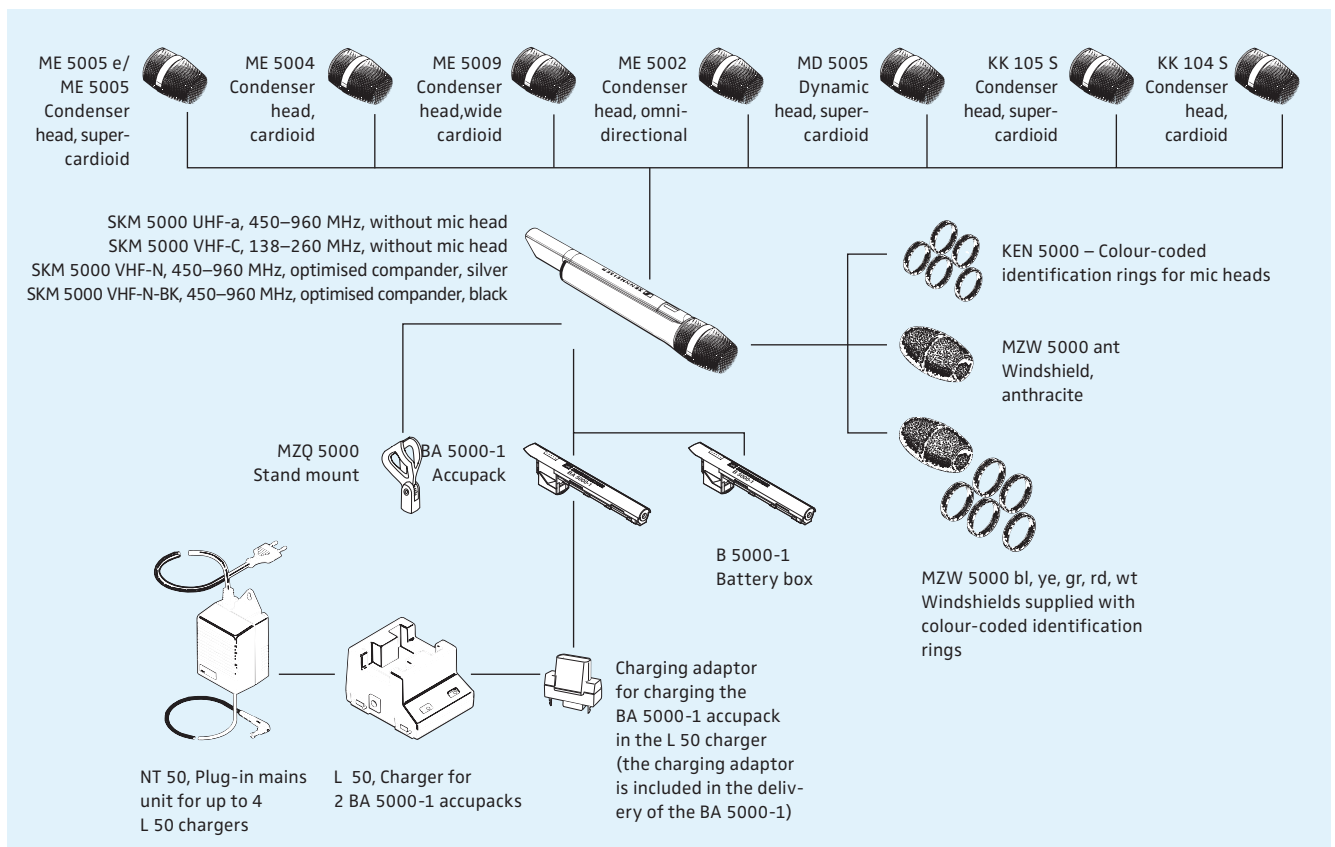
Transducer principle ..... dynamic  
 Pick-up pattern ..... super-cardioid  
 Max. SPL ..... 163 dB

### Technical Data KK 105 S (Neumann)

Transducer principle ..... condenser  
 Pick-up pattern ..... super-cardioid  
 Max. SPL ..... 155 dB

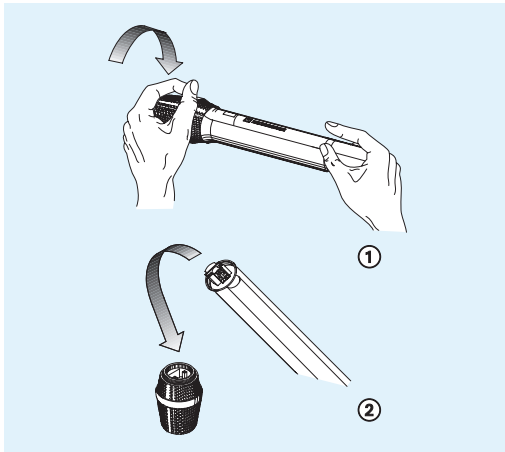
### Technical Data KK 104 S (Neumann)

Transducer principle ..... condenser  
 Pick-up pattern ..... cardioid  
 Max. SPL ..... 153 dB



# SKM 5000

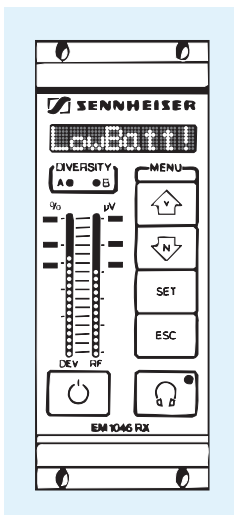
## RF Wireless Systems | 5000 Series Hand-Held Transmitters



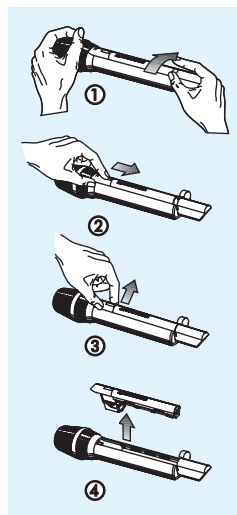
Changing the microphone head

The SKM 5000 versions provide for extremely reliable and flexible use of hand-held Mikroport transmitters. Their interchangeable microphone heads let you choose between five condenser microphone heads with different pick-up patterns and a super-cardioid dynamic head. Together with the EM 1046 receiver system, the SKM 5000 hand-held transmitters can prove their strong points.

Via the Mikroport computer display you can monitor all channels. The radio links are exceptionally reliable and can be used in large multi-channel systems. Since its launch in 1993, the slim hand-held transmitter has been extremely popular with demanding TV productions and shows. For discriminating users worldwide the SKM 5000 is the top choice.



Warning status on the EM 1046



Removing the battery box

### Power supply

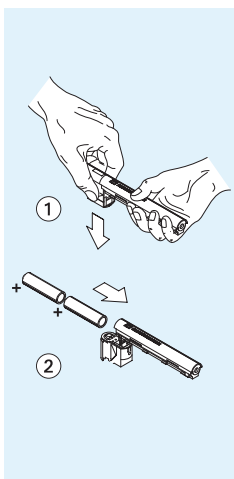
The variants of the SKM 5000 can be optionally powered by a rechargeable accupack or batteries. In a BA 5000-1, two rechargeable NiMH batteries are integrated whilst the B 5000-1 battery box takes two miniature (AA) cells. The B 5000-1 battery box has a 3-step LC display for monitoring the battery status at the transmitter. The BA 5000-1 provides a check of the battery status with a 6-step LCD. If only one LCD segment is showing, it flashes as a warning. The remaining operating time is then 20 minutes maximum.

In addition, the 3000 and 5000 series receivers can be used for remotely checking the battery status. If the display of the receiver indicates "Low Batt", about 20 minutes of operation are left. The accupack is charged from the L 50 automatic charger which is also used for the accupacks of the SK 50 / SK 250 bodypack transmitters. The BA 5000-1 is inserted in the L 50 by means of a charging adaptor supplied with the accupacks.

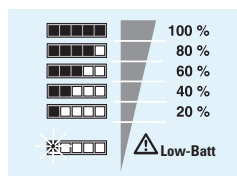
### General information on the use of hand-held transmitters

The specific fields of application for hand-held transmitters are where the bodypack transmitter/clip-on microphone combination is not suitable. If, for example, it is not possible to attach an SK 50 / ME 102 combination because speakers change, the SKM 5000 can be rapidly passed to and fro between presenter and questioner in the audience. However, a hand-held transmitter also provides different acoustic characteristics from a clip-on microphone with bodypack transmitter: it can be moved closer to the mouth as a result of which ambient noise can be better suppressed.

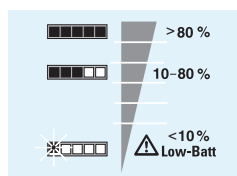
On a musical stage, excellent results are achieved even when a clip-on microphone is used when the voice is trained. On a rock 'n' roll stage, in contrast, the monitor system is so loud that it is not possible to use clip-ons. The situation in chat shows with loud audience noise presents similar problems. It is specifically when the microphone is used not only for programme sound but is also for public address that the sound quality is preserved by using the SKM 5000 hand-held transmitter.



Replacing the B 5000-1 batteries



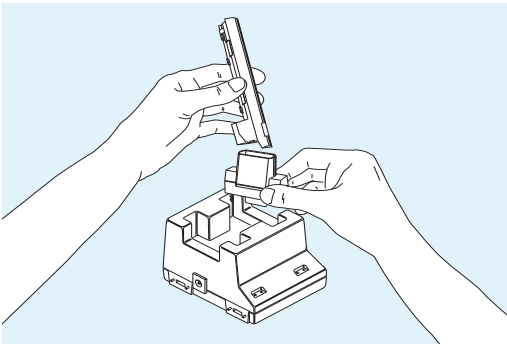
BA 5000-1 status indicator



B 5000-1 status indicator

# SKM 5000

## RF Wireless Systems | 5000 Series Hand-Held Transmitters



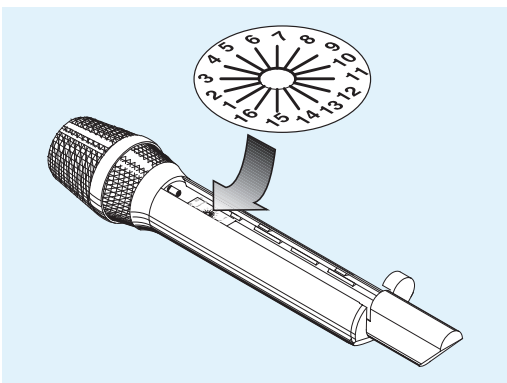
BA 5000-1, charging adaptor, charger (from top to bottom)

### Pick-up patterns/handling

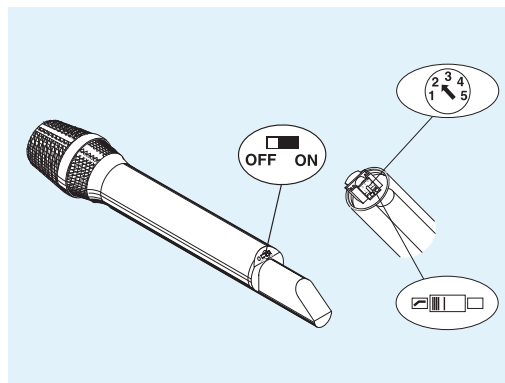
The most frequently used pick-up pattern is the super-cardioid which is particularly sensitive to sound coming from the front. The tip of the microphone should therefore always point towards the mouth. This position optimally suppresses ambient noise. The ME 5002 microphone head with omni-directional pattern picks up sound equally from all directions. With favourable acoustics it can therefore pick up the voices of both interviewer and interviewee.

Besides its directional pattern a super-cardioid microphone exhibits another typical characteristic: the proximity effect. At close talking distances the bass frequencies are enhanced, a singer's voice sounds fuller and warmer. The ME 5005 e microphone head has been optimised for vocal applications. If a neutral sound is required irrespective of the talking distance a microphone head with wide cardioid, cardioid or omni-directional pick-up pattern is the better choice. Radio sound mixers prefer the wide cardioid pattern.

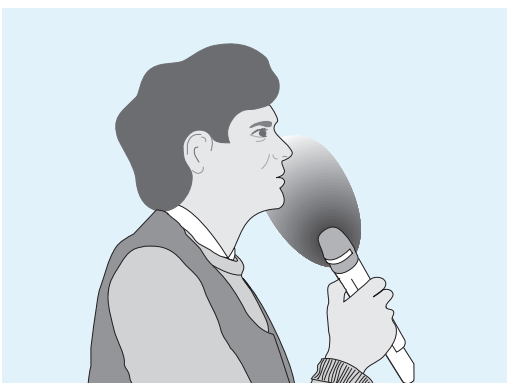
If questions from the audience are to be integrated into a discussion, the SKM 5000 can be used as a wireless boom microphone. Although it is not possible to have the same long operating distances as in the case of a gun microphone, the sound operator can easily control the speaking distance with the SKM 5000 mounted on a short boom. An antenna is integrated into the body of the SKM 5000. Please take care, therefore, that the user does not clamp the hand-held transmitter with both hands or press it against the body. This distinctly reduces the radiated power of the antenna.



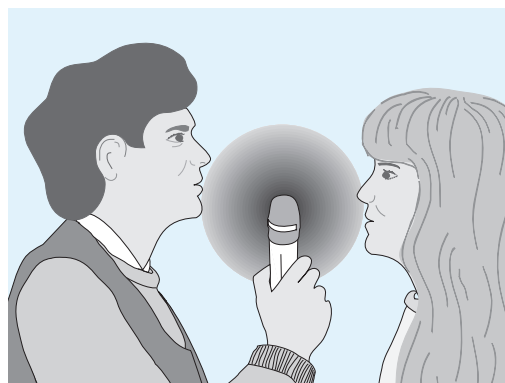
SKM 5000 channel switching



Switches for on/off, sensitivity, bass attenuation



Super-cardioid directivity. For more information on pick-up patterns and pop sounds please refer to the chapter "Planning Theory"



ME 5002 mic head with omni-directional pick-up pattern

## Free Manuals Download Website

<http://myh66.com>

<http://usermanuals.us>

<http://www.somanuals.com>

<http://www.4manuals.cc>

<http://www.manual-lib.com>

<http://www.404manual.com>

<http://www.luxmanual.com>

<http://aubethermostatmanual.com>

Golf course search by state

<http://golfingnear.com>

Email search by domain

<http://emailbydomain.com>

Auto manuals search

<http://auto.somanuals.com>

TV manuals search

<http://tv.somanuals.com>