

RANGE COMPOSITION

N 700: a range of over 100 models for the professional caterer designed to guarantee the highest level of performance, reliability, energy saving, safety standards and ergonomic operation. These concepts are reflected in the total modularity of the range that ensures numerous configurations, either free-standing or bridged. N 700 demonstrates how advanced technology can satisfy the needs of the professional caterer. The models detailed on this sheet are electric boiling tops with 2 or 4 hot plates.



178018

N 700

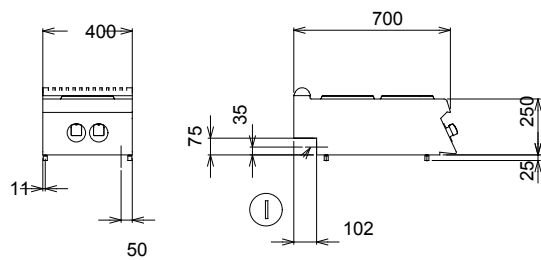
ELECTRIC BOILING TOPS ZANUSSI PROFESSIONAL

FUNCTIONAL AND CONSTRUCTION FEATURES

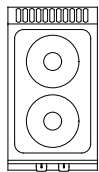
- ◆ Cast-iron hot plates hermetically sealed to the one-piece top, with safety thermostat.
- ◆ Hot plates with a power of 2,6 kW.
- ◆ Worktop in 1,5mm stainless steel. Front panel in stainless steel with Scotch Brite finish.
- ◆ All models have right-angled side edges to allow flush-fitting joins between units, eliminating gaps and possible dirt traps.
- ◆ The special design of the control knob system guarantees against water infiltration.
- ◆ IPX4 water protection.
- ◆ Main connections can be via the rear or the base of the unit.
- ◆ All models can be easily mounted on open base cupboards or bridging supports.
- ◆ All top models provided with service duct to facilitate installation.

TECHNICAL DATA						
CHARACTERISTICS	MODELS					
	KCE400 178013	KCE4002 178035	KCE800 178014	KCE8002 178036	KCEQ800 178018	KCEQ8002 178027
Power supply	Electric	Electric	Electric	Electric	Electric	Electric
External dimensions - mm						
width	400	400	800	800	800	800
depth	700	700	700	700	700	700
height	250	250	250	250	250	250
Back plate dimensions - mm	Ø 230	Ø 230	Ø 230, Ø 230	Ø 230, Ø 230	Ø 230, Ø 230	Ø 230, Ø 230
Back plates power - kW	2.6	2.6	2.6, 2.6	2.6, 2.6	2.6, 2.6	2.6, 2.6
Front plates dimension - mm	Ø 230	Ø 230	Ø 230, Ø 230	Ø 230, Ø 230	Ø 230, Ø 230	Ø 230, Ø 230
Front plates power - kW	2.6	2.6	2.6, 2.6	2.6, 2.6	2.6, 2.6	2.6, 2.6
Power - kW						
installed-electric	5.2	5.2	10.4	10.4	10.4	10.4
Net weight - kg.	20	20	40	40	40	40
Supply voltage	400 V, 3N, 50/60	230 V, 3, 50/60	400 V, 3N, 50/60	230 V, 3, 50/60	400 V, 3N, 50/60	230 V, 3, 50/60
Square plate					●	●

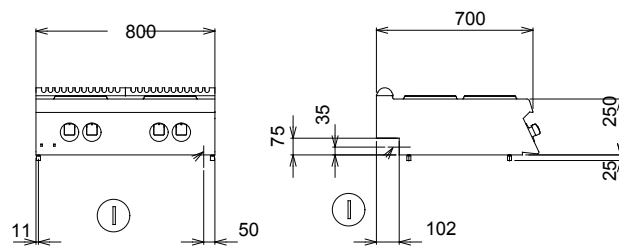
178013, 178035



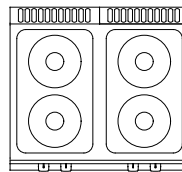
597824400



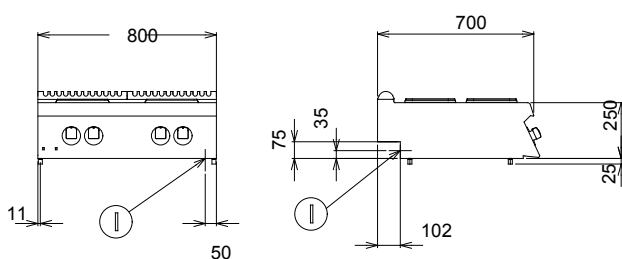
178014, 178036



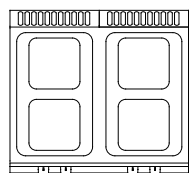
597824500



178018, 178027



597824900



LEGEND

	KCE400 178013	KCE4002 178035	KCE800 178014	KCE8002 178036	KCEQ800 178018	KCEQ8002 178027
I - Electrical connection	400 V, 3N, 50/60	230 V, 3, 50/60	400 V, 3N, 50/60	230 V, 3, 50/60	400 V, 3N, 50/60	230 V, 3, 50/60

OPTIONAL ACCESSORIES

ACCESSORIES	MODELS					
	KCE400 178013	KCE4002 178035	KCE800 178014	KCE8002 178036	KCEQ800 178018	KCEQ8002 178027
2 SIDE COVERING PANELS FOR TOP-D=700MM	206277	206277	206277	206277	206277	206277
CHIMNEY COVER 400MM OPEN	206284	206284				
CHIMNEY COVER 800MM OPEN-SMALL CHIMNEY			206272	206272	206272	206272
CHIMNEY UPSTAND 400MM	206303	206303				
CHIMNEY UPSTAND 800MM			206304	206304	206304	206304
FRONTAL HANDRAIL 1200 MM	206191	206191	206191	206191	206191	206191
FRONTAL HANDRAIL 1600 MM	206192	206192	206192	206192	206192	206192
FRONTAL HANDRAIL 400 MM	206166	206166	206166	206166	206166	206166
FRONTAL HANDRAIL 800 MM	206167	206167	206167	206167	206167	206167
LARGE HANDRAIL(PORTIONING SHELF)400 MM	206185	206185	206185	206185	206185	206185
LARGE HANDRAIL(PORTIONING SHELF)800 MM	206186	206186	206186	206186	206186	206186
RIGHT AND LEFT SIDE HANDRAILS	206240	206240	206240	206240	206240	206240
SUPPORT FOR "BRIDGE" SYSTEM 1000 MM	206138	206138	206138	206138	206138	206138
SUPPORT FOR "BRIDGE" SYSTEM 1200 MM	206139	206139	206139	206139	206139	206139
SUPPORT FOR "BRIDGE" SYSTEM 1400 MM	206140	206140	206140	206140	206140	206140
SUPPORT FOR "BRIDGE" SYSTEM 1600 MM	206141	206141	206141	206141	206141	206141
SUPPORT FOR "BRIDGE" SYSTEM 400 MM	206154	206154	206154	206154	206154	206154
SUPPORT FOR "BRIDGE" SYSTEM 800 MM	206137	206137	206137	206137	206137	206137
WATER COLUMN EXTENSION FOR 700 LINE	206291	206291	206291	206291	206291	206291
WATER COLUMN WITH SWIVEL ARM	206289	206289	206289	206289	206289	206289



www.zanussiprofessional.com

Free Manuals Download Website

<http://myh66.com>

<http://usermanuals.us>

<http://www.somanuals.com>

<http://www.4manuals.cc>

<http://www.manual-lib.com>

<http://www.404manual.com>

<http://www.luxmanual.com>

<http://aubethermostatmanual.com>

Golf course search by state

<http://golfingnear.com>

Email search by domain

<http://emailbydomain.com>

Auto manuals search

<http://auto.somanuals.com>

TV manuals search

<http://tv.somanuals.com>