

## RANGE COMPOSITION

The Zanussi Dishwashing range is produced for customers with the highest conceivable demands for good efficiency, economy and ergonomics for dishwashing operation. The product range comprises glasswashers, undercounter dishwashers, hood type dishwashers, rack type dishwashers and pot and pan washers. The rack type dishwasher range is designed to be easily connected with the equipment included in the Zanussi Handling System range, to create a functional and ergonomic dishwashing area. The rack type dishwasher RTCS90 has a capacity of 90 racks per hour. The range consists of 2 electrically heated models (steam on request).



534314

# COMPACT RTCS 90

## RACK TYPE DISHWASHERS **ZANUSSI** PROFESSIONAL

## FUNCTIONAL AND CONSTRUCTION FEATURES

- ◆ Solid 3mm square stainless steel sub-frame.
- ◆ All rear positioned water tubes in stainless steel.
- ◆ Only one cable for electrical connection.
- ◆ Service from the front and from the side.
- ◆ Pre-arrangements for automatic detergent dispenser, energy management device and HACCP implementation (both basic as well as integrated system).
- ◆ In the wash zone all the soil is removed by the combination of the mechanical washing action by means of a powerful 300 litres / minute self draining wash pump, the thermal action of the heating elements that guarantee a constant water temperature of between 55° and 65°C and appropriate detergents. Wash tank is pressed.
- ◆ Rinse zone: clean water is used to eliminate any trace of detergent from the wash-ware.
- ◆ As optional extra the RTCS90 can be equipped with a drying zone for fast and efficient drying.
- ◆ Tanks are pressed with completely rounded corners and sloping base to facilitate cleaning.
- ◆ Smooth surfaces.

TECHNICAL DATA		
CHARACTERISTICS	MODELS	
	RTCS90ERB 534314	RTCS90ELB 534315
Model	Electronic - B	Electronic - B
Power supply	Electric	Electric
Feeding direction	from RH to LH	from LH to RH
Water supply		
pressure min. , max. - bar	3, 7	3, 7
hot water inlet °C	50	50
Capacity dishes/h 1st/2nd speed	1620	1620
Capacity baskets/h 1st/2nd speed	90	90
Insulation	●	●
External dimensions - mm		
width	1124	1124
depth	884	884
height/with open door	1771, 2119	1771, 2119
1st wash		
temperature - °C	55-65	55-65
tank capacity - lt.	100	100
pump power - kW	1.0	1.0
Rinsing		
temperature - °C	80-90	80-90
boiler capacity - lt.	12	12
boiler power - kW	12	12
water flow - liters/hr	240	240
Total installed power - kW	23.9	23.9
Net weight - kg.	459	459
Supply voltage	400 V, 3N, 50	400 V, 3N, 50

**RACK TYPE DISHWASHERS**

**COMPACT RTCS 90**

- ◆ 304 AISI stainless steel front and side panels, strainers and wash and rinse arms.
- ◆ Wash arms and double tank filter (flat and deep box) easy to remove.
- ◆ Height adjustable stainless steel feet.
- ◆ All models finished in top quality materials with double skinned construction to aid durability and reduce noise.
- ◆ Self-draining wash pumps provide maximum hygiene.

- ◆ Large balanced inspection door for easy access to wash area.
- ◆ Self-cleaning cycle.
- ◆ Automatic start/stop function.
- ◆ Simple electric control panel.
- ◆ Counter balanced door with safety switch and easy to grip handle.

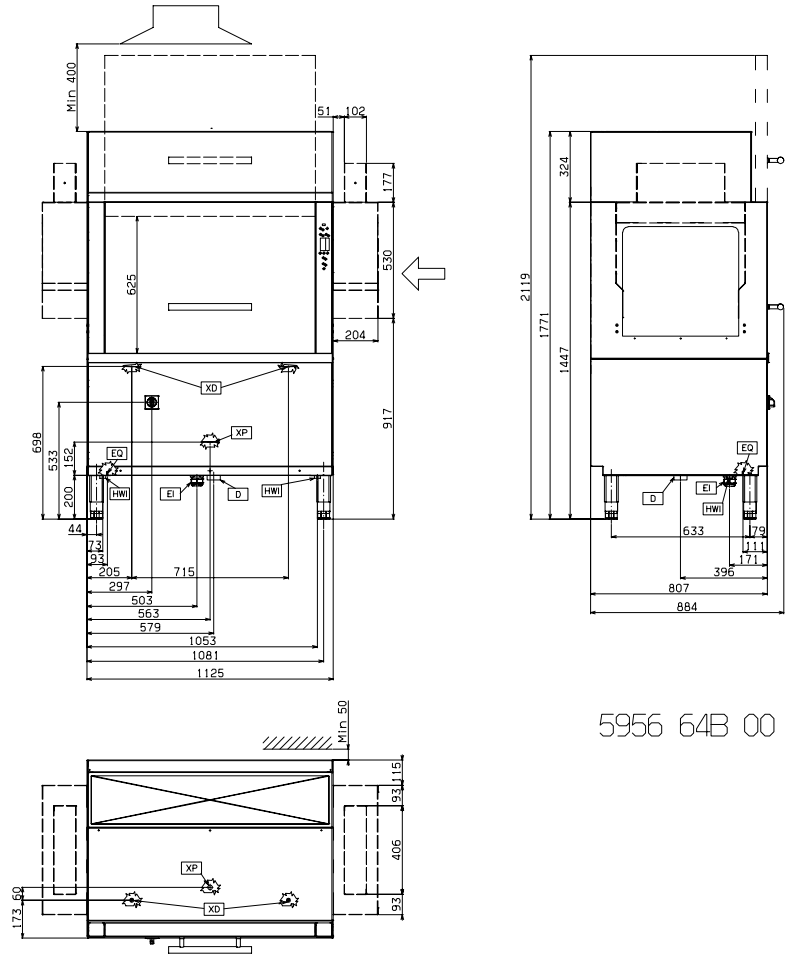
- ◆ Built-in rinse water heater to increase the temperature of the final rinse water.
- ◆ Electronic control panel with autodiagnostic check control.
- ◆ 35mm thickness foam injection insulated doors to reduce noise and reduce heat dispersion.
- ◆ 98% recyclable by weight.
- ◆ CFC free packaging.
- ◆ Low noise level.
- ◆ Developed and produced in ISO 9001 and ISO 14001 certified factory.

\* Installation is recommended below a dishwashing hood to convey steam.

OPTIONAL ACCESSORIES		
ACCESSORIES	MODELS	
	RTCS90ERB 534314	RTCS90ELB 534315
12 S/S PLUGS FOR WASH.ARMS-MODUL/COMP.RT	864239	864239
BASKET FOR 5 HALF INSULATED TRAYS-RED	867005	867005
DRAIN KIT FOR MODULAR+COMPACT RACK TYPE	864150	864150
EL. DRYING TUNNEL-COMPACT RT-L>R-600 MM		864519
EL. DRYING TUNNEL-COMPACT RT-L>R-900 MM		864517
EL. DRYING TUNNEL-COMPACT RT-R>L-600 MM	864518	
EL. DRYING TUNNEL-COMPACT RT-R>L-900 MM	864516	
EL. DRYING TUNNEL-CORNER-L>R-COMPACT RT		864521
EL. DRYING TUNNEL-CORNER-R>L-COMPACT RT	864520	
EL.HOT AIR BLOWER-LEFT-600MM-COMPACT RT		864507
EL.HOT AIR BLOWER-RIGHT-600MM-COMPACT RT	864506	
KIT 6 BASKETS FOR 1-TANK RACK TYPE DW	867050	867050
KIT 9 BASKETS FOR 1-TANK RACK TYPE DW	867051	867051
KIT AIR GAP FOR COMPACT RACK TYPE	864309	864309
KIT SILASTIC CURTAINS FOR RACK TYPE DW	864245	864245
SPLASH HOOD-LEFT SIDE-COMPACT RACK TYPE	864248	864248
SPLASH HOOD-RIGHT SIDE-COMPACT RACK TYPE	864247	864247



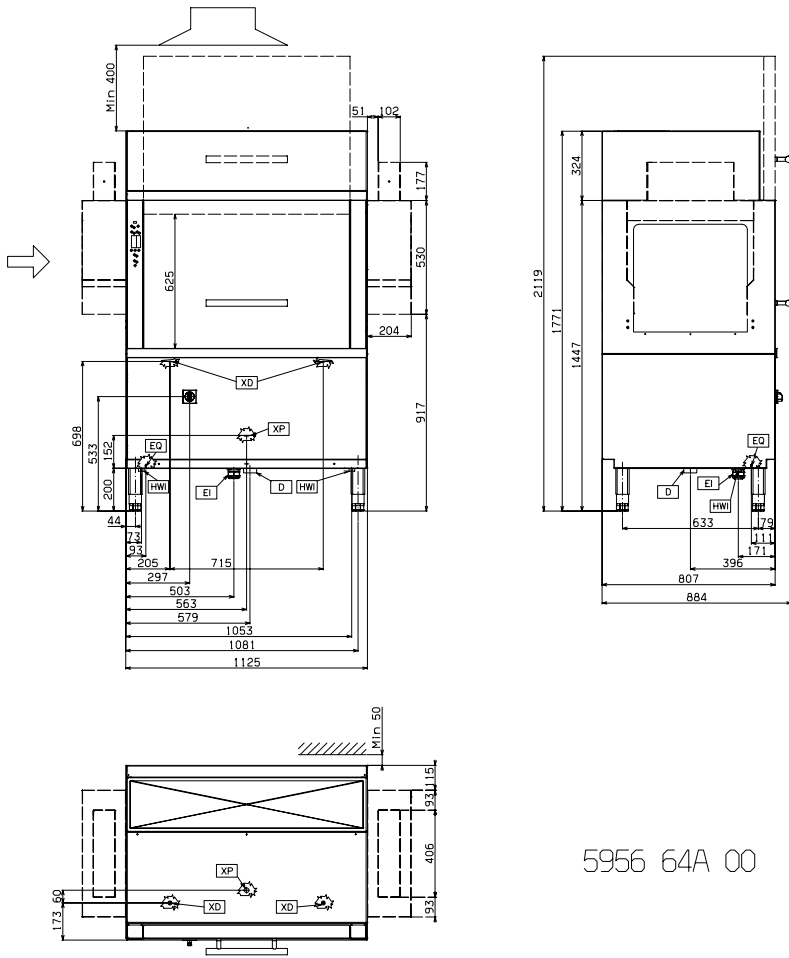
www.zanussiprofessional.com



5956 64B 00

LEGEND	
D - Water drain	RTCS90ERB 534314
EI - Electrical connection	G 1 1/2"
EQ - Equipotential screw	400 V, 3N, 50
HWI - Hot water inlet	●
XP - Connection for detergent dispenser	G 3/4"
XD - Connection for detergent probe	●
	●





5956 64A 00

LEGEND

	RTCS90ELB 534315
D - Water drain	G 1 1/2"
EI - Electrical connection	400 V, 3N, 50
EQ - Equipotential screw	●
HWI - Hot water inlet	G 3/4"
XP - Connection for detergent dispenser	●
XD - Connection for detergent probe	●



www.zanussiprofessional.com

## Free Manuals Download Website

<http://myh66.com>

<http://usermanuals.us>

<http://www.somanuals.com>

<http://www.4manuals.cc>

<http://www.manual-lib.com>

<http://www.404manual.com>

<http://www.luxmanual.com>

<http://aubethermostatmanual.com>

Golf course search by state

<http://golfingnear.com>

Email search by domain

<http://emailbydomain.com>

Auto manuals search

<http://auto.somanuals.com>

TV manuals search

<http://tv.somanuals.com>