

RANGE COMPOSITION

The range consists of 4 sinks, with all-round apron panelling, 1200, 1400, 1800 mm in length, and with a single bowl.



132356 with accessory

1200/1800 mm

DOUBLE BOWL SINKS ON LEGS **ZANUSSI** PROFESSIONAL

FUNCTIONAL AND CONSTRUCTION FEATURES

- ◆ Worktop in 10/10, 304 AISI stainless steel, 40 mm in thickness and with overflow rim along the top.
- ◆ Sink bowl in 304 AISI stainless steel. All bowls are supplied as standard with an overflow pipe and a drain hole.
- ◆ Rear splashback with 8 mm rounded corner, 100 mm in height and 13 mm deep.
- ◆ Square section legs with 1" height-adjustable (40 mm) feet in 304 AISI stainless steel to guarantee perfect alignment with other food preparation units.
- ◆ Quick and easy installation as the sink tops are slotted onto the legs and the taps are easily installed from the rear.

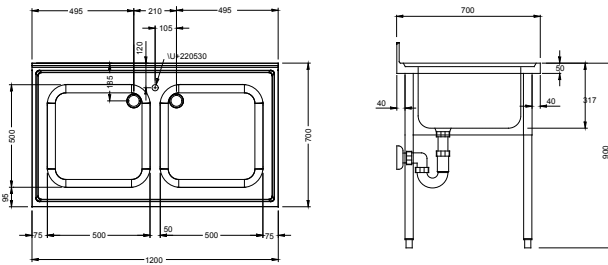
- ◆ Accessories available on request: lower shelf, tap unit, false bowl bottom, overflow filter, single or double syphons.

- ◆ A 40 mm thick lower shelf can be easily slotted into position, 200 mm from the floor, without using tools. The shelves are supplied in solid versions as standard, with perforated shelves supplied on request.

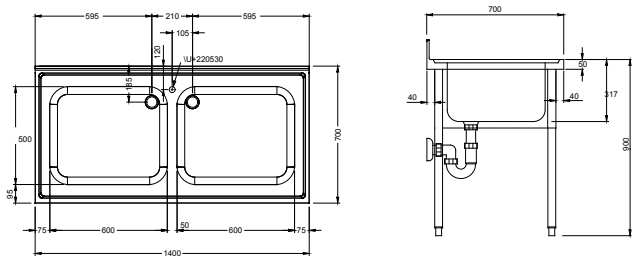
- ◆ All models comply with the more strict international standards as far as hygiene and cleanability are concerned.

TECHNICAL DATA				
CHARACTERISTICS	MODELS			
	LG1225P 132344	LG1426P 132350	LG1826DXP 132356	LG1826SXP 132357
External dimensions - mm				
width	1200	1400	1800	1800
depth	700	700	700	700
height	1000	1000	1000	1000
Worktop thickness - mm	50	50	50	50
Worktop				
radius	90°	90°	90°	90°
top - mm	1	1	1	1
Upstand dimensions - mm				
height	100	100	100	100
depth	13	13	13	13
radius	R=8	R=8	R=8	R=8
Bowls - n.	2	2	2	2
Bowl dimensions (wxdxh) - mm	500x500xH300	600x500xH300	600x500xH300	600x500xH300
Net weight - kg.	42	46	51	51
Right hand drainer			●	
Left hand drainer				●

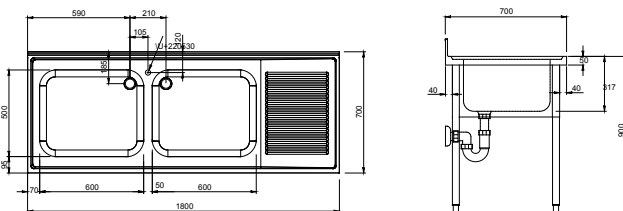
132344



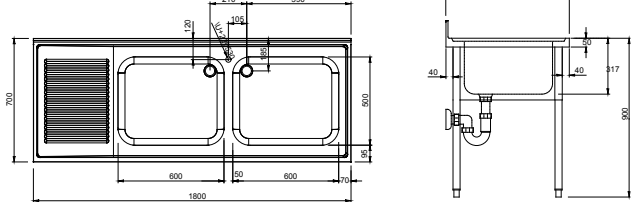
132350



132356



132357



LEGEND

	LG1225P 132344	LG1426P 132350	LG1826DXP 132356	LG1826SXP 132357
A - Hot water inlet	3/4"	3/4"	3/4"	3/4"
B - Cold water inlet	3/4"	3/4"	3/4"	3/4"
C - Water drain	2"	2"	2"	2"

OPTIONAL ACCESSORIES

ACCESSORIES	MODELS			
	LG1225P 132344	LG1426P 132350	LG1826DXP 132356	LG1826SXP 132357
DOUBLE PLASTIC DRAIN SYPHON 2"	850022	850022	850022	850022
ELBOW OP.MIXER TAP+SPOUT-3/4" SINGLE HOLE	855322	855322	855322	855322
ELBOW OP.TAP+SPRAY ARM+SPOUT-3/4" HOLE	855324	855324	855324	855324
FALSE BOTTOM FOR L/H 500X500 MM BOWL	895210			
FALSE BOTTOM FOR L/H 600X500 MM BOWL		895110	895110	895110
FALSE BOTTOM FOR R/H 500X500 MM BOWL	895200			
FALSE BOTTOM FOR R/H 600X500 MM BOWL		895100	895100	895100
FOOT OP.MIXER TAP(HOT+COLD)+SPOUT-3/4"	855328	855328	855328	855328
LOWER SHELF FOR 1200 MM SINK	855342			
LOWER SHELF FOR 1400 MM SINK		855344		
LOWER SHELF FOR 1800 MM SINK			855348	855348
MAXIREEL-RETRACTABLE HOSE SPRAY UNIT 10M	855320	855320	855320	855320
MAXIREEL-RETRACTABLE HOSE SPRAY UNIT 15M	855321	855321	855321	855321
MAXIREEL-RETRACTABLE HOSE SPRAY UNIT 6M	855327	855327	855327	855327
MIXER TAP W/FOOT PEDAL FOR SINKS ON LEGS	855317	855317	855317	855317
MIXER TAP WITH SPOUT 3/4" SINGLE HOLE	855319	855319	855319	855319
MIXER TAP(INFRARED)+SPOUT 3/4" SING.HOLE	855325	855325	855325	855325
MIXER TAP(PREMIUM)+SPRAY ARM-3/4" HOLE	855326	855326	855326	855326
MIXER TAP+SPRAY ARM+SPOUT-3/4" SING.HOLE	855329	855329	855329	855329
OVERFLOW FILTER FOR 500X500 MM BOWL	895136			
OVERFLOW FILTER FOR 600X500 MM BOWL		895135	895135	895135
PRE-WASH SPRAY UNIT,SINGLE HOLE	855315	855315	855315	855315
SINGLE BRASS SYPHON 2"	895314	895314	895314	895314
SINGLE PLASTIC SYPHON 2"	895313	895313	895313	895313
WALL MIX.TAP+SPRAY+SPOUT+SH.LEVER+THERM	855307	855307	855307	855307
WALL MIXER TAP WITH SWIVEL SPOUT 3/4"	855310	855310	855310	855310



www.zanussiprofessional.com

Free Manuals Download Website

<http://myh66.com>

<http://usermanuals.us>

<http://www.somanuals.com>

<http://www.4manuals.cc>

<http://www.manual-lib.com>

<http://www.404manual.com>

<http://www.luxmanual.com>

<http://aubethermostatmanual.com>

Golf course search by state

<http://golfingnear.com>

Email search by domain

<http://emailbydomain.com>

Auto manuals search

<http://auto.somanuals.com>

TV manuals search

<http://tv.somanuals.com>