

## RANGE COMPOSITION

A range of hoods supplementing the 'inductive emission' principle and automatic filter washing. Untreated air is introduced inside to partly compensate for that removed. This results in better drawing of fumes towards the filter surface and reduced air-treatment costs. The inside filters have water sprayer nozzles controlled by the special panel which controls washing functions. The range consists of hoods with 5 different lengths (2400, 2800, 3200, 3600 and 4000 mm) and 2600 mm deep.



640257

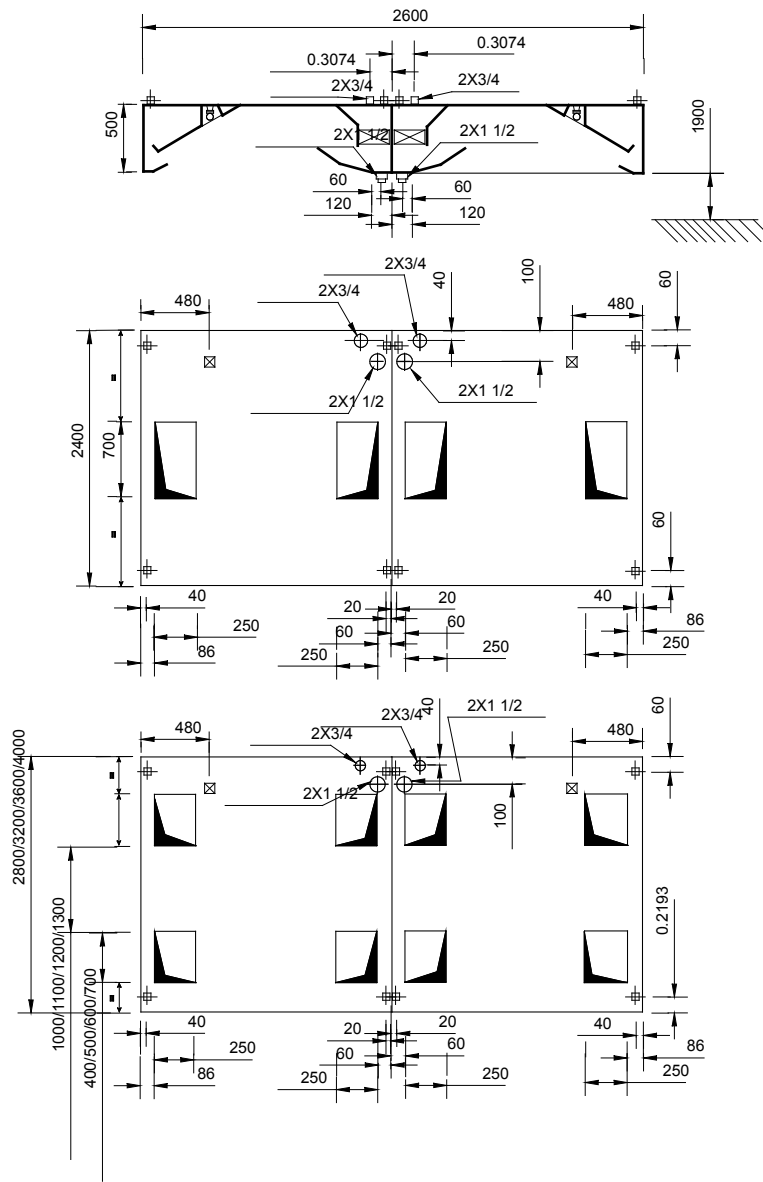
# SUPERTREDILWASH - SW line - 2600mm

## 304 AISI CENTRAL MODULAR HOODS **ZANUSSI** PROFESSIONAL

### FUNCTIONAL AND CONSTRUCTION FEATURES

- ◆ Constructed entirely in 304 AISI stainless steel.
- ◆ Constructed as 2 separate wall units to join on site back to back.
- ◆ Compensated flow exhaust system (air inlet from outdoors).
- ◆ Automatic built-in filter-washing.
- ◆ Supplied with "CHICANE" filter packs in 304 AISI stainless steel with built-in lighting and 2 drain pipes diam.= 1 1/2" in 304 AISI stainless steel.
- ◆ Brass nozzles with full cone-shaped jets and fast joints in stainless steel complete with gasket and nylon connector.
- ◆ Water pipes in 304 AISI stainless steel.
- ◆ All parts in contact with the inlet air flow, at external temperature, are insulated to avoid condensation.
- ◆ Eyebolts and screw anchors for ceiling installation.
- ◆ Heating and air conditioning costs reduced up to 60%.

| TECHNICAL DATA           |                    |                    |                    |                    |                    |
|--------------------------|--------------------|--------------------|--------------------|--------------------|--------------------|
| CHARACTERISTICS          | MODELS             |                    |                    |                    |                    |
|                          | STWC2624<br>640255 | STWC2628<br>640256 | STWC2632<br>640045 | STWC2636<br>640257 | STWC2640<br>640258 |
| External dimensions - mm |                    |                    |                    |                    |                    |
| width                    | 2400               | 2800               | 3200               | 3600               | 4000               |
| depth                    | 2600               | 2600               | 2600               | 2600               | 2600               |
| height                   | 500                | 500                | 500                | 500                | 500                |
| Air Capacity - mc/h      | 7900               | 9200               | 10500              | 11800              | 13200              |
| Power - kW               |                    |                    |                    |                    |                    |
| installed-electric       | 0.32               | 0.48               | 0.48               | 0.64               | 0.64               |
| Net weight - kg.         | 314                | 358                | 400                | 358                | 486                |
| Supply voltage           | 220 V, 1N, 50/60   | 220 V, 1N, 50/60   | 220 V, 1N, 50/60   | 220 V, 1N, 50/60   | 220 V, 1N, 50/60   |



**LEGEND**

|                           | STWC2624<br>640255 | STWC2628<br>640256 | STWC2632<br>640045 | STWC2636<br>640257 | STWC2640<br>640258 |
|---------------------------|--------------------|--------------------|--------------------|--------------------|--------------------|
| C - Water drain           | 1"1/2              | 1"1/2              | 1"1/2              | 1"1/2              | 1"1/2              |
| I - Electrical connection | 220 V, 1N, 50/60   | 220 V, 1N, 50/60   | 220 V, 1N, 50/60   | 220 V, 1N, 50/60   | 220 V, 1N, 50/60   |

**OPTIONAL ACCESSORIES**

| ACCESSORIES                              | MODELS             |                    |                    |                    |                    |
|------------------------------------------|--------------------|--------------------|--------------------|--------------------|--------------------|
|                                          | STWC2624<br>640255 | STWC2628<br>640256 | STWC2632<br>640045 | STWC2636<br>640257 | STWC2640<br>640258 |
| EXTRACTION PLENUM FOR HOOD 2400 MM       | 640138             |                    |                    |                    |                    |
| EXTRACTION PLENUM FOR HOOD 2800 MM       |                    | 640139             |                    |                    |                    |
| EXTRACTION PLENUM FOR HOOD 3200 MM       |                    |                    | 640140             |                    |                    |
| EXTRACTION PLENUM FOR HOOD 3600 MM       |                    |                    |                    | 640141             |                    |
| EXTRACTION PLENUM FOR HOOD 4000 MM       |                    |                    |                    |                    | 640142             |
| EXTRACTION PLENUM FOR MODUL.HOOD 2400 MM | 640143             |                    |                    |                    |                    |
| EXTRACTION PLENUM FOR MODUL.HOOD 2800 MM |                    | 640144             |                    |                    |                    |
| EXTRACTION PLENUM FOR MODUL.HOOD 3200 MM |                    |                    | 640145             |                    |                    |
| EXTRACTION PLENUM FOR MODUL.HOOD 3600 MM |                    |                    |                    | 640259             |                    |
| EXTRACTION PLENUM FOR MODUL.HOOD 4000 MM |                    |                    |                    |                    | 640264             |
| GALVAN. AIR INLET PLENUM FOR HOOD 2400MM | 640374             |                    |                    |                    |                    |
| GALVAN. AIR INLET PLENUM FOR HOOD 2800MM |                    | 640375             |                    |                    |                    |
| GALVAN. AIR INLET PLENUM FOR HOOD 3200MM |                    |                    | 640376             |                    |                    |
| GALVAN. AIR INLET PLENUM FOR HOOD 3600MM |                    |                    |                    | 640377             |                    |
| GALVAN. AIR INLET PLENUM FOR HOOD 4000MM |                    |                    |                    |                    | 640378             |
| WASH-UP CONTROL PANEL-1 ZONE 60X20X40 CM | 641141             | 641141             | 641141             | 641141             | 641141             |
| WASH-UP CONTROL PANEL-2 ZONES 60X20X40CM | 641142             | 641142             | 641142             | 641142             | 641142             |
| WASH-UP CONTROL PANEL-3 ZONES 60X20X40CM | 641143             | 641143             | 641143             | 641143             | 641143             |
| WASH-UP CONTROL PANEL-4 ZONES 60X20X40CM | 641144             | 641144             | 641144             | 641144             | 641144             |



www.zanussiprofessional.com

## Free Manuals Download Website

<http://myh66.com>

<http://usermanuals.us>

<http://www.somanuals.com>

<http://www.4manuals.cc>

<http://www.manual-lib.com>

<http://www.404manual.com>

<http://www.luxmanual.com>

<http://aubethermostatmanual.com>

Golf course search by state

<http://golfingnear.com>

Email search by domain

<http://emailbydomain.com>

Auto manuals search

<http://auto.somanuals.com>

TV manuals search

<http://tv.somanuals.com>