

IMPORTANT!

When setting up Wireless Encryption on your router, please perform the steps outlined in this guide on a PC directly connected to the router - NOT from your wireless PC.

Wireless Encryption Guide

Step 1 Select Router

Your model number is located on the bottom of the router



F5D6231au4



F5D7230au4



F5D7231au4



F6D3230au4



F5D8230au4



F5D7630au4A



F5D7633au4A



F5D9230au4 and F5D9630au4A

Step 2 Select Wireless Card



F5D7000au



F5D7010au



F5D7001au



F5D8010au



F6D3000au



F6D3010au



F5D7050au



F5D9050au



Windows Zero Configuration

IMPORTANT!

When setting up Wireless Encryption on your router, please perform the steps outlined in this guide on a PC directly connected to the router - NOT from your wireless PC.

For the following routers:

F5D6231au4
F5D7230au4
F5D7231au4
F5D9230au4
F5D9630au4A
F6D3230au4

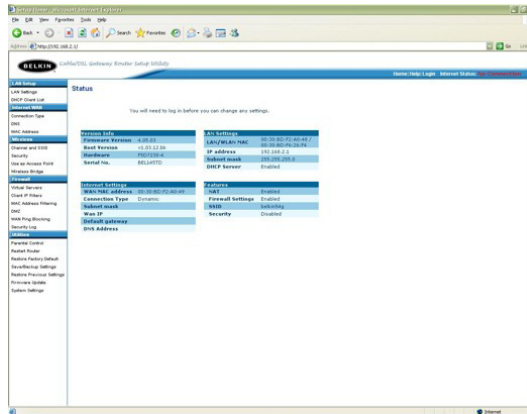
Select Encryption Type:

WEP:
64bit
128bit

WPA

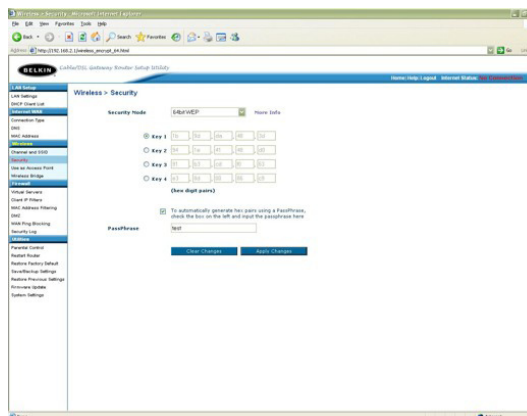
64Bit WEP

- Open Internet Explorer and type in <http://192.168.2.1/> or click the link
- You will be presented with the following screen:



- On the left side of the screen, click on **Security**
- From the drop down box, choose **64 bit WEP**
- Place a tick in "To automatically generate hex pairs using a Pass Phrase..."
- Type in a PassPhrase in the box and click **Apply Changes**.

You will be presented with the screen below, write down on a piece of paper **Key 1** with out any dots or space eg. 1b9dda483d



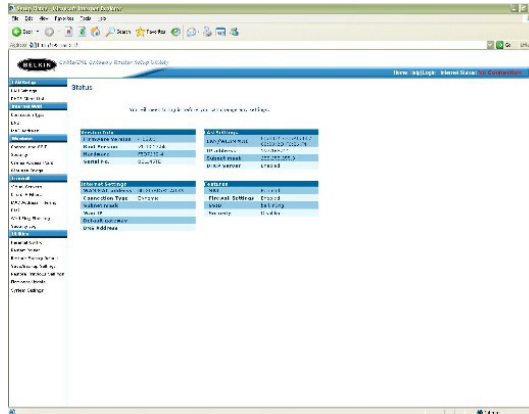
- Close your Internet browser

DONE!

[Click here to configure your wireless card](#)

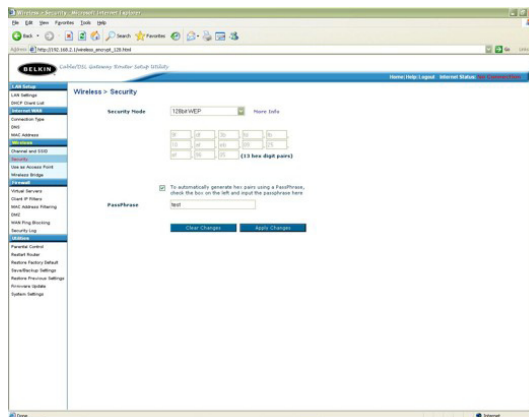
128 Bit WEP

- Open Internet Explorer and type in <http://192.168.2.1> or click the link
- You will be presented with the following screen:



- On the left side of the screen, click on **Security**
- From the drop down box, choose **128 bit WEP**
- Place a tick in "To automatically generate hex pairs using a Pass Phrase..."
- Type in a PassPhrase in the box and click **Apply Changes**.

You will be presented with the screen below, write down on a piece of paper the encryption key with out any dots or space eg. 9fdf3bfdfb10afeb0925ef9605



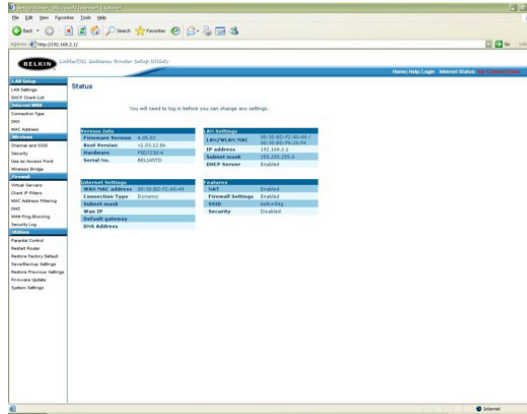
- Close your Internet browser

DONE!

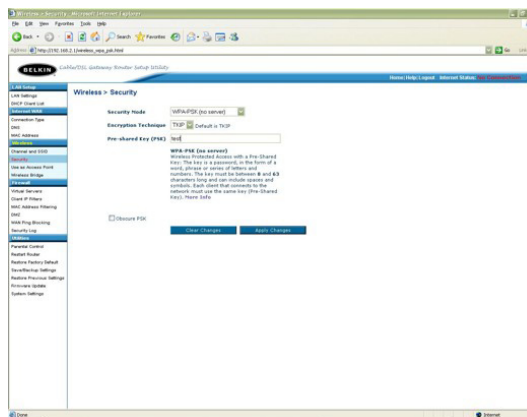
[Click here to configure your wireless card](#)

WPA

- Open Internet Explorer and type in <http://192.168.2.1> or click the link
- You will be presented with the following screen:



- On the left side of the screen, click on **Security**
- From the drop down box, choose **WPA-PSK**



- Close your Internet browser

DONE!

[Click here](#) to configure your wireless card

IMPORTANT!

When setting up Wireless Encryption on your router, please perform the steps outlined in this guide on a PC directly connected to the router - NOT from your wireless PC.

For the following router:

F5D8230au4

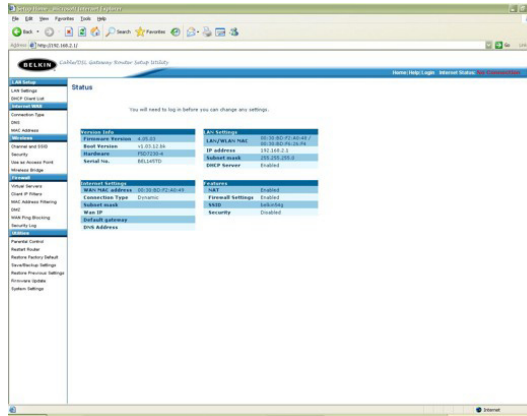
Select Encryption Type:

WEP:
64bit
128bit

WPA

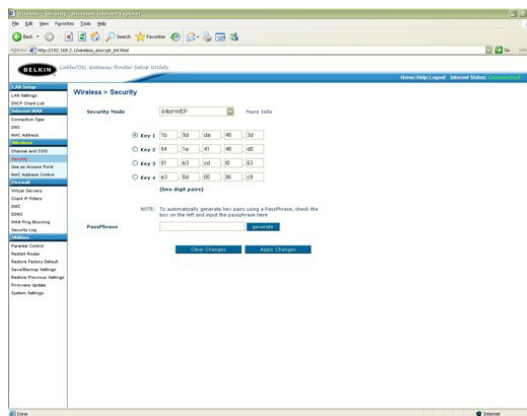
64Bit WEP

- Open Internet Explorer and type in <http://192.168.2.1> or click the link
- You will be presented with the following screen:



- On the left side of the screen, click on **Security**
- From the drop down box, choose **64 bit WEP**
- Type in a PassPhrase in the box and click **generate**.

You will be presented with the screen below, write down on a piece of paper **Key 1** with out any dots or space eg. 1b9dda483d



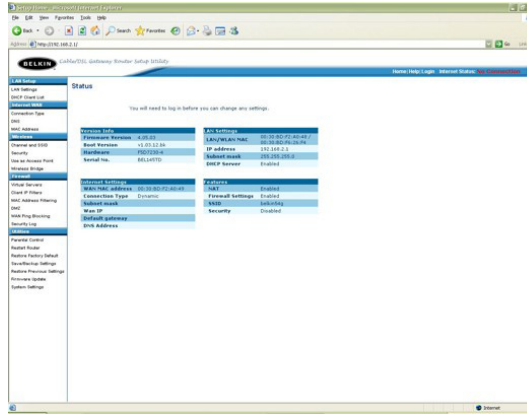
- Click **Apply Changes** to save settings
- Close your Internet browser

DONE!

[Click here](#) to configure your wireless card

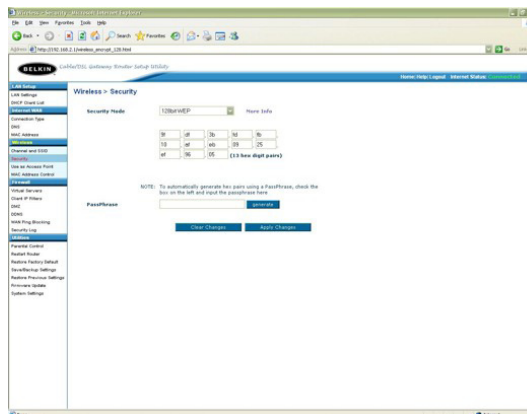
128 Bit WEP

- Open Internet Explorer and type in <http://192.168.2.1> or click the link
- You will be presented with the following screen:



- On the left side of the screen, click on **Security**
- From the drop down box, choose **128 bit WEP**
- Type in a PassPhrase in the box and click **generate**.

You will be presented with the screen below, write down on a piece of paper **Key 1** with out any dots or space eg. 1b9dda483d



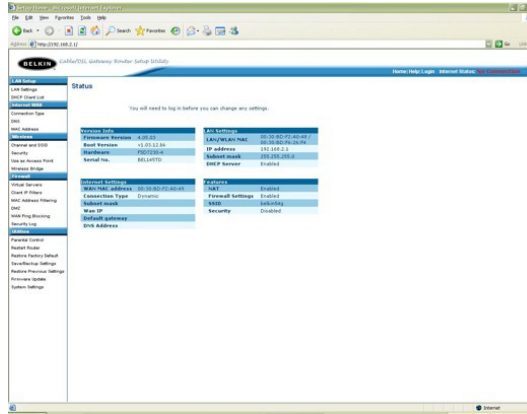
- Click **Apply Changes** to save settings
- Close your Internet browser

DONE!

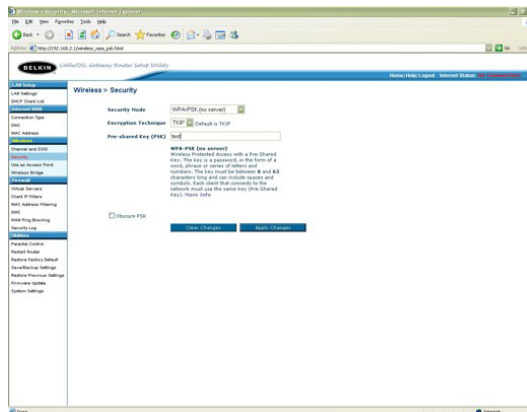
Click [here](#) to configure your wireless card

WPA

- Open Internet Explorer and type in <http://192.168.2.1> or click the link
- You will be presented with the following screen:



- On the left side of the screen, click on Security
- From the drop down box, choose WPA-PSK



- Close your Internet browser

DONE!

[Click here](#) to configure your wireless card

IMPORTANT!

When setting up Wireless Encryption on your router, please perform the steps outlined in this guide on a PC directly connected to the router - NOT from your wireless PC.

For the following routers:

F5D7630au4A
F5D7633au4A

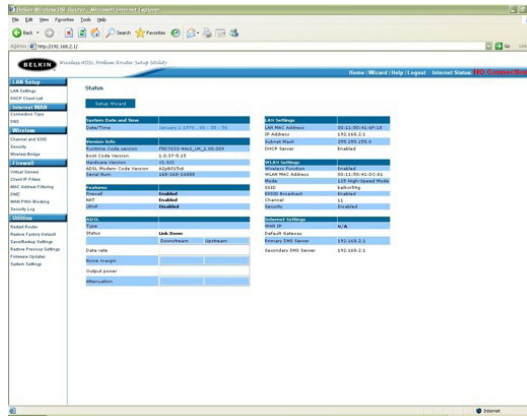
Select Encryption Type:

WEP:
64bit
128bit

WPA

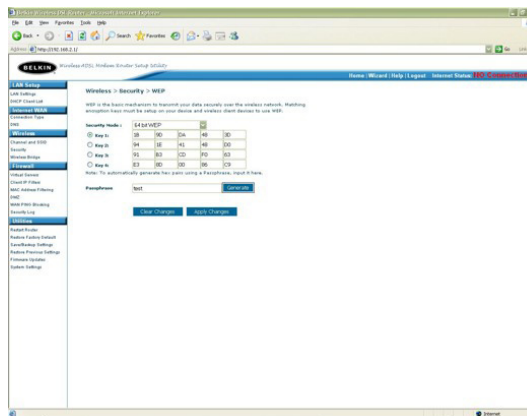
64Bit WEP

- Open Internet Explorer and type in <http://192.168.2.1> or click the link
- You will be presented with the following screen:



- On the left side of the screen, click on **Security**
- From the drop down box, choose **64 bit WEP**
- Type in a PassPhrase in the box and click **generate**.

You will be presented with the screen below, write down on a piece of paper **Key 1** with out any dots or space eg. 1b9dda483d



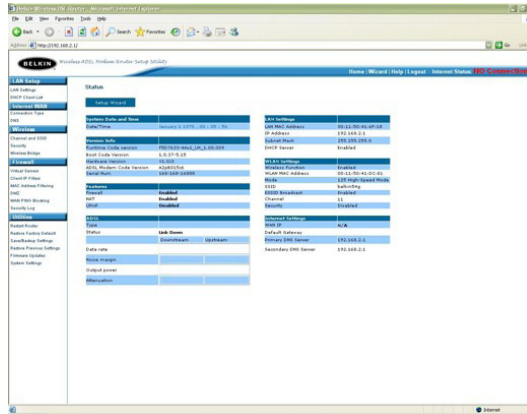
- Click **Apply Changes** to save settings
- Close your Internet browser

DONE!

[Click here](#) to configure your wireless card

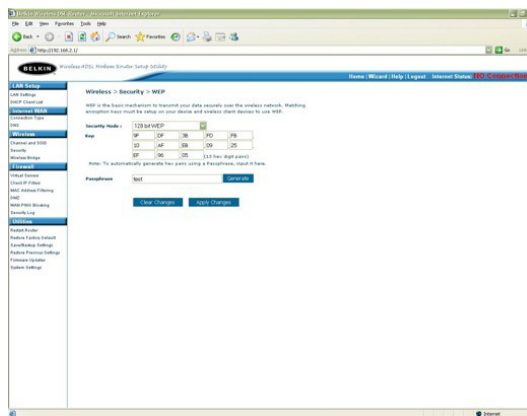
128 Bit WEP

- Open Internet Explorer and type in <http://192.168.2.1> or click the link
- You will be presented with the following screen:



- On the left side of the screen, click on **Security**
- From the drop down box, choose **128 bit WEP**
- Type in a PassPhrase in the box and click **generate**.

You will be presented with the screen below, write down on a piece of paper **Key 1** with out any dots or space eg. 9fdf3bfdfb10afeb0925ef9605



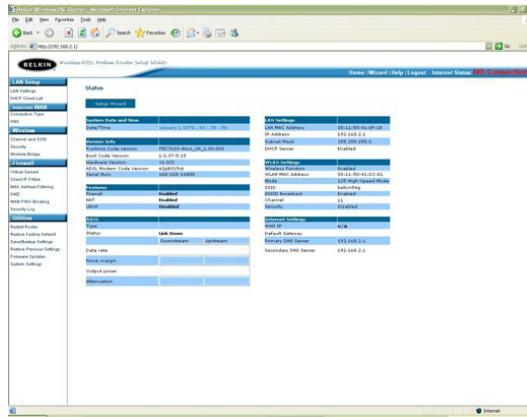
- Click **Apply Changes** to save settings
- Close your Internet browser

DONE!

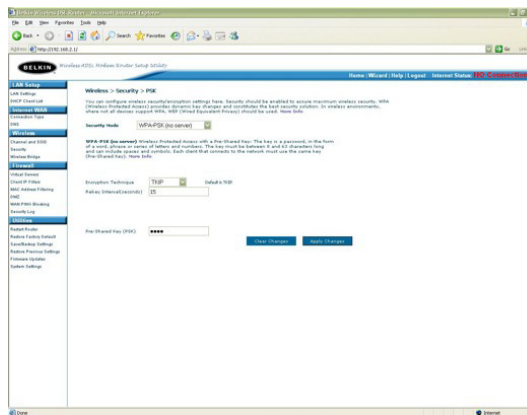
[Click here](#) to configure your wireless card

WPA

- Open Internet Explorer and type in <http://192.168.2.1> or click the link
- You will be presented with the following screen:



- On the left side of the screen, click on Security
- From the drop down box, choose WPA-PSK
- Type in any 8+ character key and click Apply Changes



- Close your Internet browser

DONE!

[Click here](#) to configure your wireless card

Please select model and version:

The version number is printed on a sticker on the card itself and on the box the card came in.

F5D7000au version 1000-2000
F5D7010au version 1000-2000
F5D7000au version 3000
F5D7010au version 3000
F5D7000au version 3000 using the RALINK drivers
F5D7010au version 3000 using the RALINK drivers
F5D7000au version 6000
F5D7010au version 6000
F5D9050au version 1000

For the following Wireless Cards:

F5D7000au version 1000-2000
F5D7010au version 1000-2000

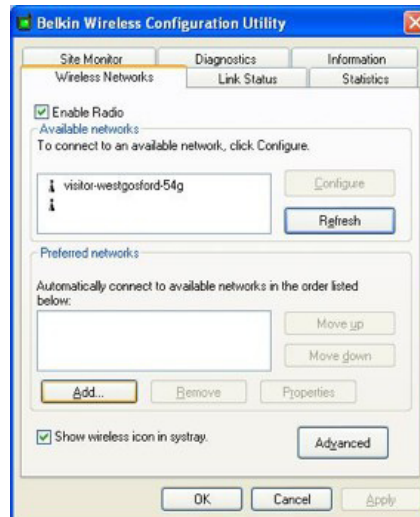
Select Encryption Type:

WEP:
64bit
128bit

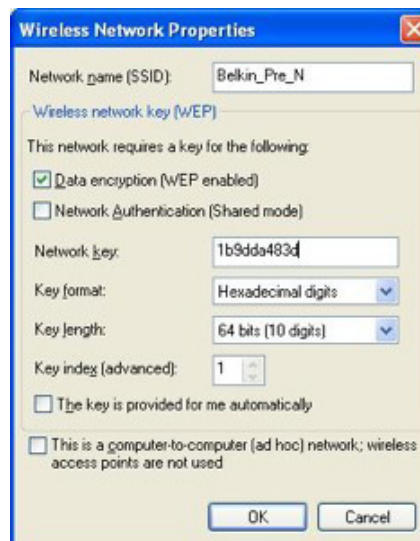
WPA

64 Bit WEP

- Double click on the Belkin Wireless Utility icon
- If you are prompted with a screen labelled **Connect to Wireless Network** click **Advanced**, otherwise continue to next step
- Click the **Wireless Networks** tab
- Remove anything listed in **Preferred networks**
- Click **Refresh** in **Available Networks**



- Highlight your available wireless network and click **Configure**
- Make sure **Data encryption (WEP enabled)** is ticked
- Untick **The key is provided for me automatically**
- Type in the 10 digit 64Bit encryption key the router generated

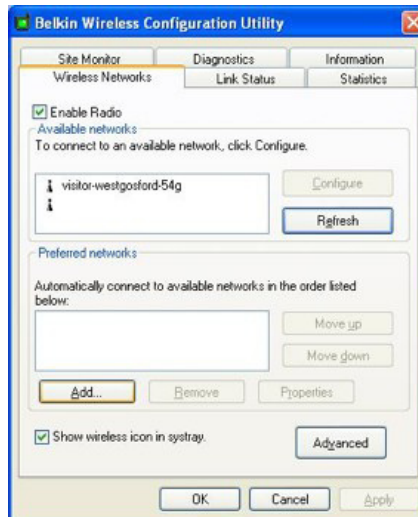


- Click **OK**
- Click **OK** again

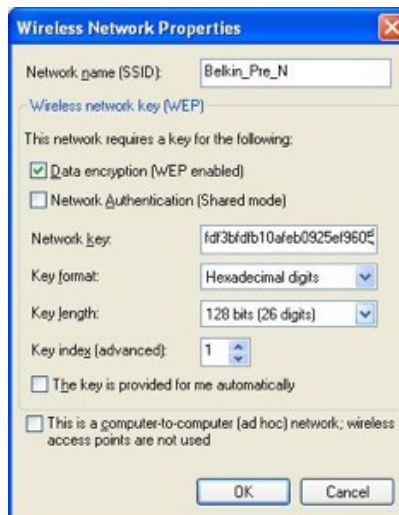
DONE!

128 Bit WEP

- Double click on the Belkin Wireless Utility icon
- If you are prompted with a screen labelled **Connect to Wireless Network** click **Advanced**, otherwise continue to next step
- Click the **Wireless Networks** tab
- Remove anything listed in **Preferred networks**
- Click **Refresh** in **Available Networks**



- Highlight your available wireless network and click **Configure**
- Make sure **Data encryption (WEP enabled)** is ticked
- Untick **The key is provided for me automatically**
- Type in the 10 digit 128Bit encryption key the router generated



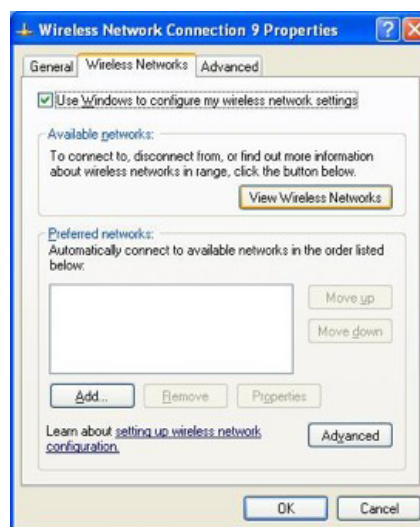
- Click **OK**
- Click **OK** again

DONE!

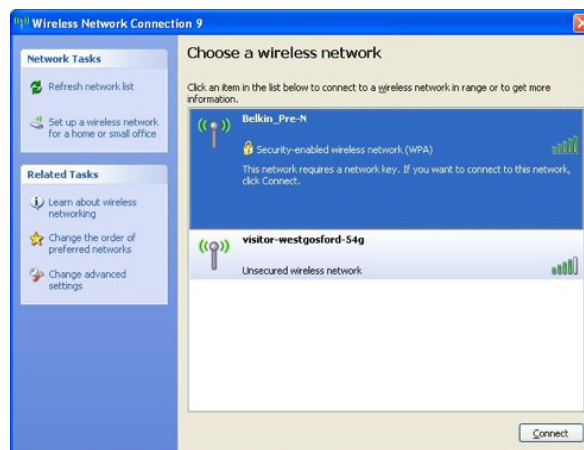
WPA – Windows XP Service Pack 2 only

To download Service Pack 2 for Windows XP, please [Click here](#)

- Open Windows **Control Panel** – In Control Panel, if at the top left of the screen it says Switch to Classic View – please click to switch to Classic View
- Double click on **Network Connections**
- Using your mouse, **right click on the Wireless Network Connection** and choose **properties**
- Click the Wireless Networks tab
- Place a tick in **Use Windows to configure my wireless network settings**



- Click **OK**
- Using your mouse, **right click on the Wireless Network Connection** and choose **properties**
- Click the **Wireless Networks** tab
- Remove anything listed in **Preferred networks**
- Click **View Wireless Networks**



- Highlight your available WPA enabled Wireless network and click **Connect**
- You are now prompted for your WPA network key – type in your key and retype to confirm
- Click **Connect**



DONE!

For the following Wireless Cards

F5D7000au version 3000 using RALINK Driver

F5D7010au version 3000 using RALINK Driver

Select Encryption Type:

WEP:

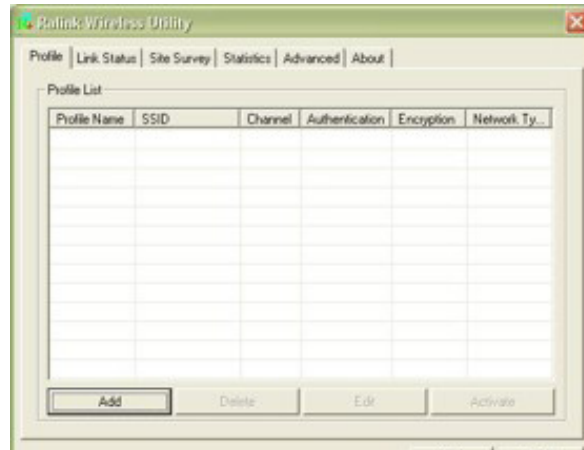
64bit

128bit

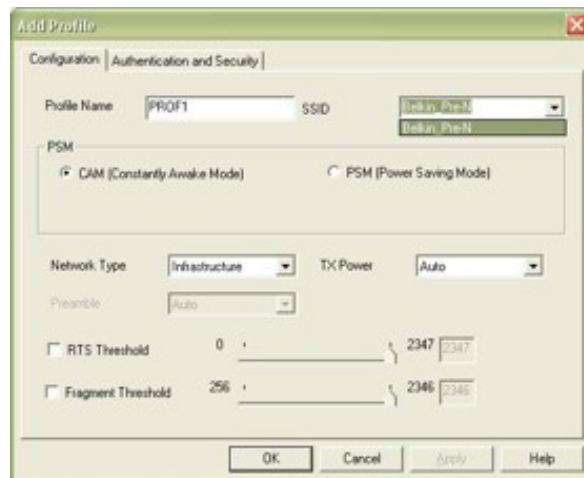
WPA

64 Bit WEP

- Double click on RALINK Wireless LAN Card Utility
- Click the Profile tab
- Click Add



- Select your correct SSID by clicking the down arrow on the drop down menu next to where it says SSID

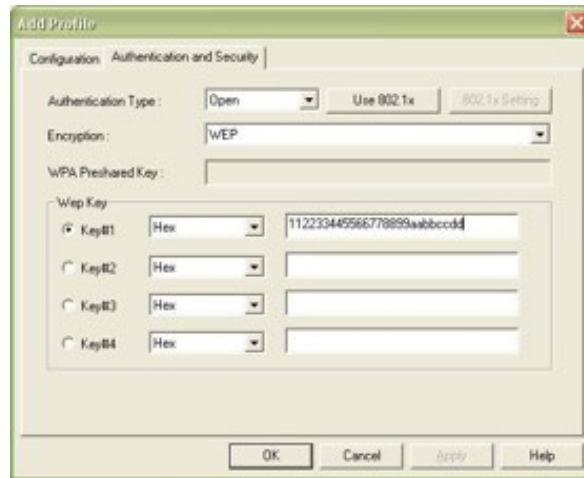


- Click Authentication and Security

For WEP Encryption:

- Set the Authentication Type to Open
- Set the Encryption to WEP

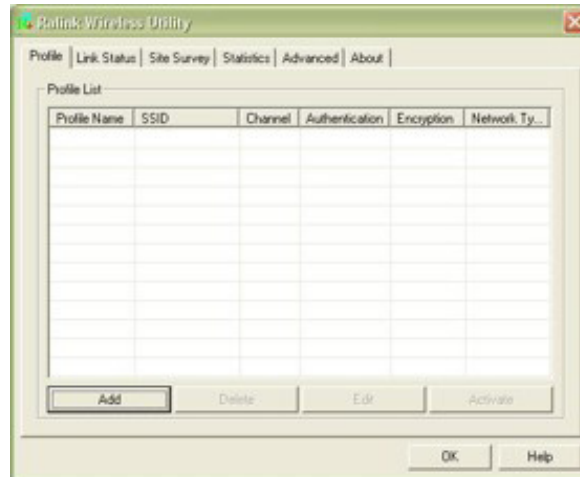
As pictured below (only used as an example, your key will be different)



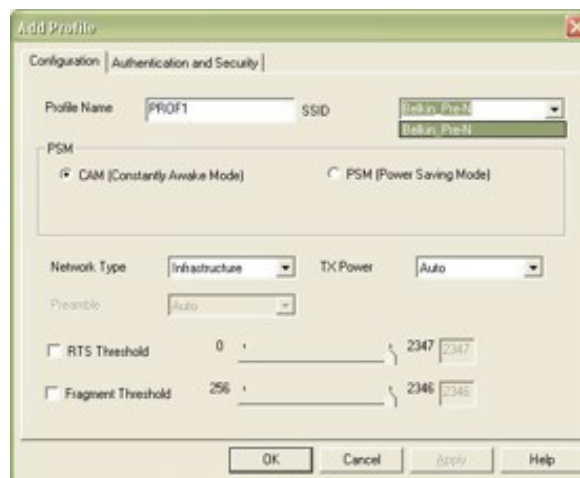
- Type in your 128 bit hexadecimal network key and click **OK**
DONE!

128 Bit WEP

- Double click on the RALINK Wireless LAN Card Utility
- Click the Profile tab
- Click Add



- Select your correct SSID by clicking the down arrow on the drop down menu next to where it says SSID

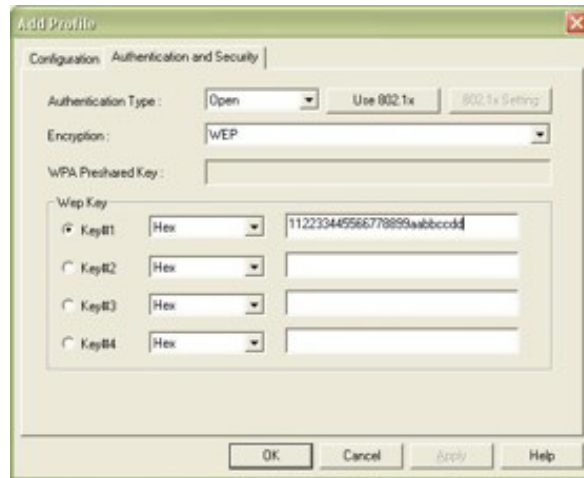


- Click Authentication and Security

For WEP Encryption:

- Set the Authentication Type to Open
- Set the Encryption to WEP

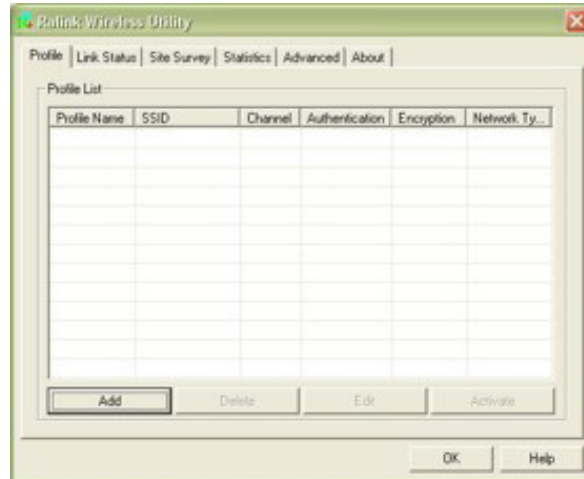
As pictured below (only used as an example, your key will be different)



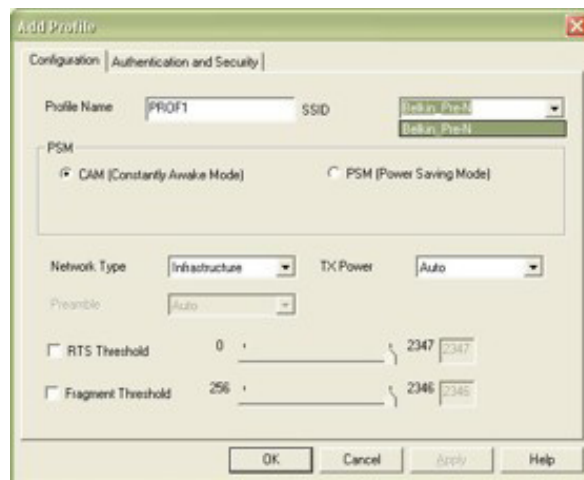
- Type in your 128 bit hexadecimal network key and click **OK**
DONE!

WPA

- Double click on RALINK Wireless LAN Card Utility
- Click the Profile tab
- Click Add

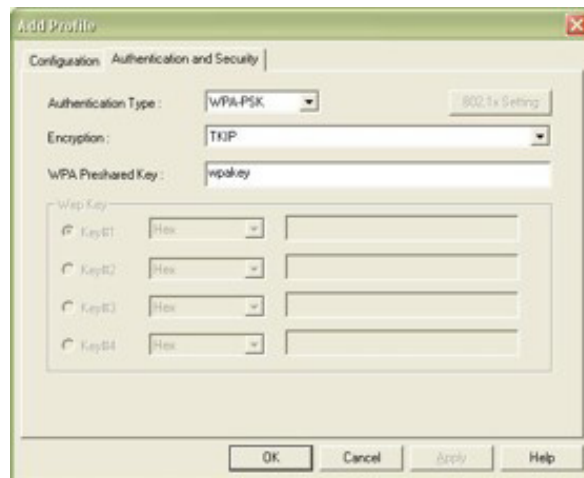


- Select your correct SSID by clicking the down arrow on the drop down menu next to where it says SSID



- Click Authentication and Security
- Change the Authentication Type to WPA-PSK
- Encryption is generally set to TKIP
- Type in your WPA Preshared Key and click OK

As pictured below (only used as an example, your key will be different)



- Type in your WPA network key and click **OK**

DONE!

For the following Wireless Card:

F5D7000au version 3000 using Belkin Driver

F5D7010au version 3000 using Belkin Driver

Select Encryption Type:

WEP:

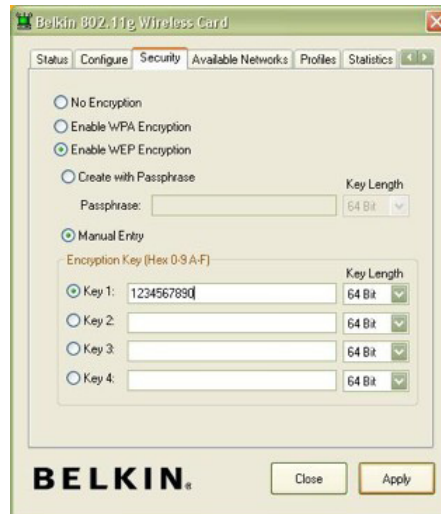
64bit

128bit

WPA

64Bit WEP

- Open the Belkin Wireless Utility
- Click the **Security** tab
- Click on **Enable WEP Encryption**
- Select **Manual Entry**
- Type in your 64 Bit WEP network key and select **Key Length to 64 Bit**

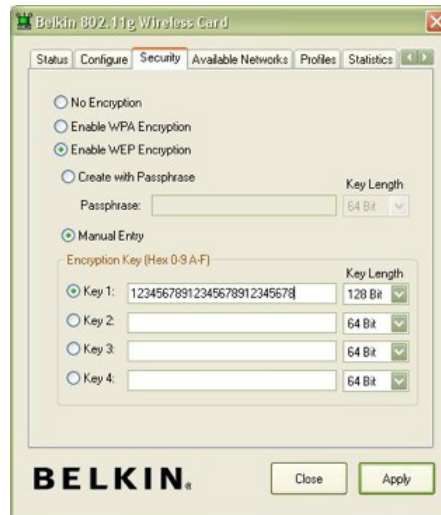


- Click **Apply**

DONE!

128Bit WEP

- Open the Belkin Wireless Utility
- Click the **Security** tab
- Click on **Enable WEP Encryption**
- Select **Manual Entry**
- Type in your 128 Bit WEP network key and select **Key Length to 128 Bit**



- Click **Apply**

DONE!

WPA

- Open the Belkin Wireless Utility
- Click the **Security** tab
- Click on **Enable WPA Encryption**
- A new screen will appear



The screenshot shows the 'Advanced Security' dialog box. At the top, 'Security Type' is set to 'WPA-PSK' and 'Encryption Type' is 'TKIP'. Below this is the 'Pre-Shared Key' section with a text box containing 'testtest' and a note: 'Enter your WPA Passphrase. The minimum length is 8 characters.' The 'EAP Selection' section includes a dropdown for 'EAP' set to 'PEAP', a 'Certificate' dropdown set to 'None', a 'Login Name' text box, an 'Authentication Protocol' dropdown set to 'EAP-MSCHAP v2', a 'User Name' text box, and a 'Password' text box. 'Cancel' and 'OK' buttons are located at the bottom right.

- Type in your WPA Passphrase
- Click **Apply**

DONE!

For the following Wireless Card:

F5D7000au version 6000

F5D7010au version 6000

F5D9050au

Select Encryption Type:

WEP:

64bit

128bit

WPA

64Bit WEP

- Open the Belkin Wireless Utility
- Double click on your available wireless network



- Type in your 64 Bit WEP Network Key

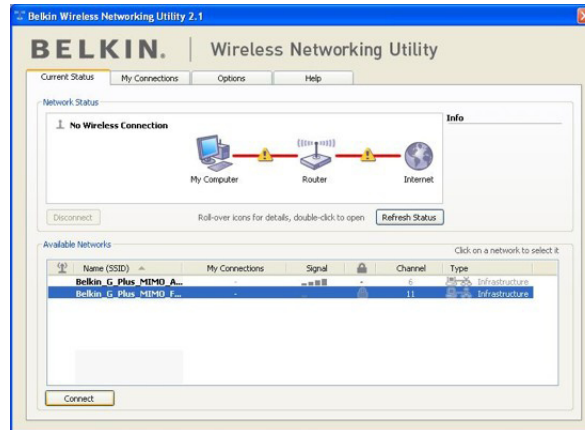


- Click Connect

DONE!

128Bit WEP

- Open the Belkin Wireless Utility
- Double click on your available wireless network



- Type in your 128 Bit WEP Network Key

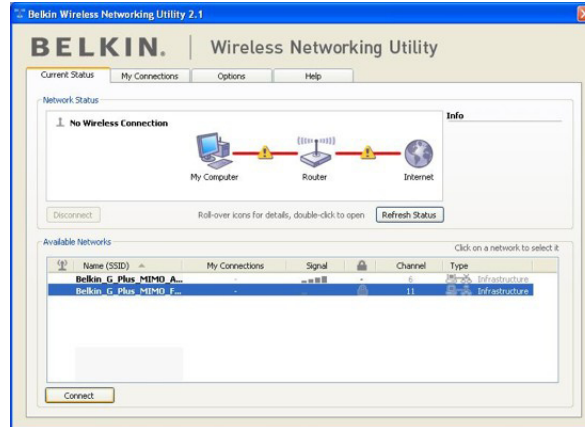


- Click Connect

DONE!

WPA

- Open the Belkin Wireless Utility
- Double click on your available wireless network



- Type in your WPA Pre-Shared Key



- Click Connect

DONE!

For the following Wireless Card:

F5D7050au

Select Encryption Type:

WEP:

64bit

128bit

WPA

64 Bit WEP

- Double click on the Belkin Wireless Monitor icon



- Click **Profiles** or **Profile Settings**
- Remove any Profile listed
- Click **Add**
- Type in a name for your profile eg. Profile1 and click **Next**
- Type in your **Routers SSID**, set **Network Type** to **Access Point** and **Transfer Rate** to **Automatic** and click **Next**
- Set the **Authentication Mode** to **Open System**
- Select **Encryption** to **64 Bits** and click **Next**



- Set **Input Method** to **Hexadecimal**



- Type in the 10 digit 64 Bit network key
- Set Key Index to 1 and click Complete



DONE!

128 Bit WEP

- Double click on the Belkin Wireless Monitor icon



- Click **Profiles** or **Profile Settings**
- Remove any Profile listed
- Click **Add**
- Type in a name for your profile eg. Profile1 and click **Next**
- Type in your **Routers SSID**, set **Network Type** to **Access Point** and **Transfer Rate** to **Automatic** and click **Next**
- Set the **Authentication Mode** to **Open System**
- Select **Encryption** to **128 Bits** and click **Next**



- Set **Input Method** to **Hexadecimal**



- Type in the 26 digit 128 Bit network key
- Set Key Index to 1 and click Complete



DONE!

WPA

- Double click on the Belkin Wireless Monitor icon



- Click Profiles or Profile Settings
- Remove any Profile listed
- Click Add
- Type in a name for your profile eg. Profile1 and click Next
- Type in your Router's SSID, set Network Type to Access Point and Transfer Rate to Automatic and click Next
- Set the Authentication Mode to WPA-PSK
- Select input Method to TKIP and click Next



- Type in the WPA network key



DONE!

For the following Wireless Card:

F5D8010au

Select Encryption Type:

WEP:

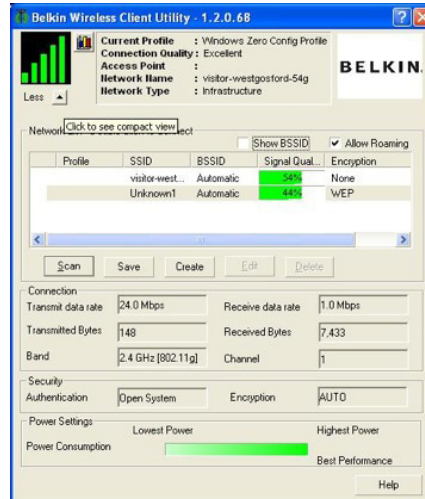
64bit

128bit

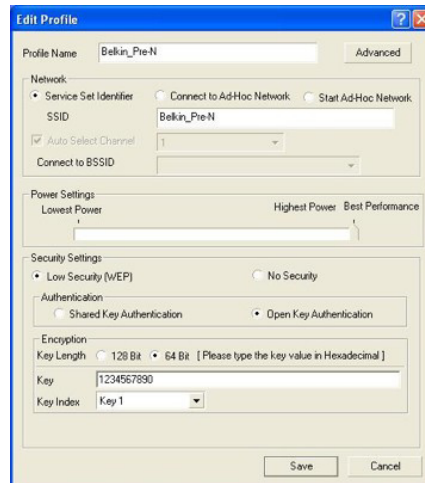
WPA

64 Bit WEP

- Double click on the Belkin Wireless Client Utility
- Click **More** so the utility looks like the image below



- Click **Create**
- Type in a Profile name
- Type in your Router's SSID
- Set Security Settings to **Low Security**
- Set the key length to **64 bits**
- Type in your 10 digit 64 Bit network key

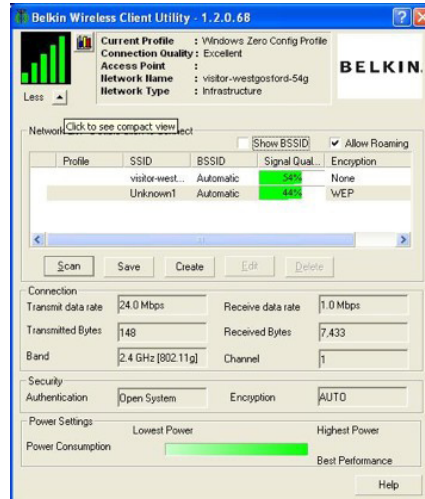


- Click **Save**

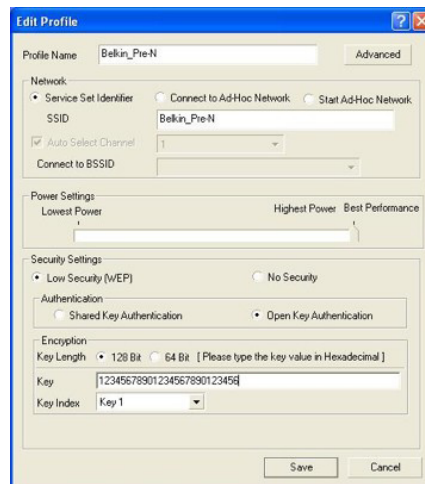
DONE!

128 Bit WEP

- Double click on the Belkin Wireless Client Utility
- Click **More** so the utility looks like the image below



- Click **Create**
- Type in a Profile name
- Type in your Router's SSID
- Set Security Settings to **Low Security**
- Set the key length to **128 bits**
- Type in your 26 digit 128 Bit network key



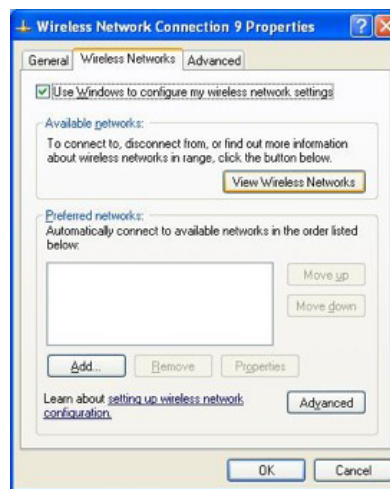
- Click **Save**

DONE!

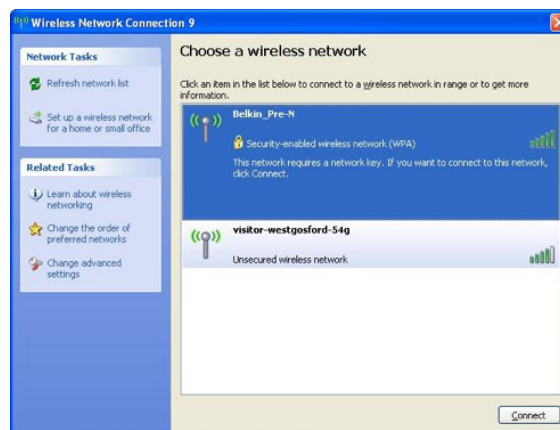
WPA – Windows XP Service Pack 2 only:

To download Service Pack 2 for Windows XP, please [Click here](#)

- Open Windows **Control Panel** – In Control Panel, if at the top left of the screen it says Switch to Classic View – please click to switch to Classic View
- Double click on **Network Connections**
- Using your mouse, right click on the Wireless Network Connection and choose **properties**
- Click the Wireless Networks tab
- Place a tick in **Use Windows to configure my wireless network settings**



- Click **OK**
- Using your mouse, right click on the Wireless Network Connection and choose **properties**
- Click the Wireless Networks tab
- Remove anything listed in Preferred networks
- Click View Wireless Networks



- Highlight your available WPA enabled Wireless network and click **Connect**
- You are now prompted for your WPA network key – type in your key and retype to confirm
- Click **Connect**



DONE!

For the following Wireless Cards:

F6D3000au

F6D3010au

Select Encryption Type:

WEP:

64bit

128bit

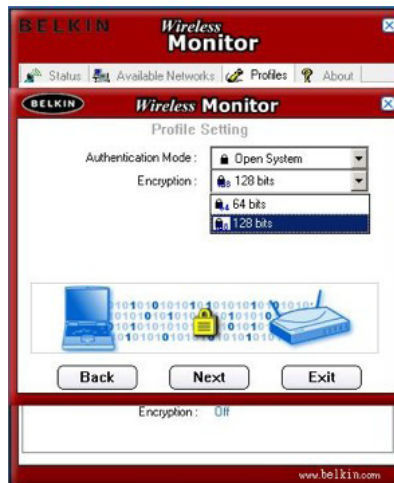
WPA

64 Bit WEP

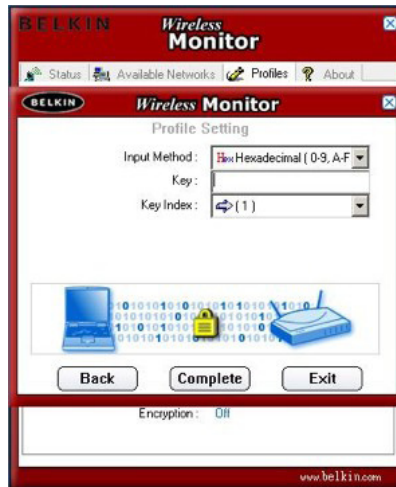
- Double click on the **Wireless Monitor Utility**
- Click the **Available Networks** tab
- Highlight the name your available network and click **Connect**



- Set the **Authentication Mode** to **Open**
- Set the **Encryption** to **64bit** then click **Next**



- Select **Input Method** as **Hexadecimal** and **Type** in your **Encryption Key**

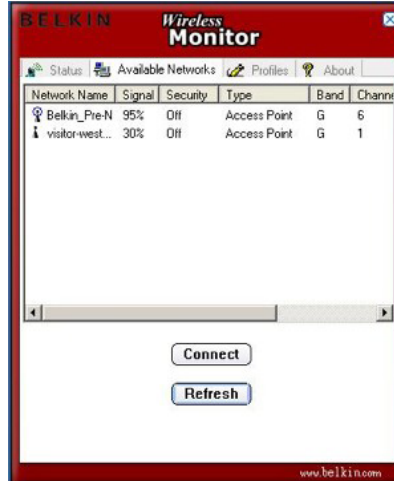


- Click Complete

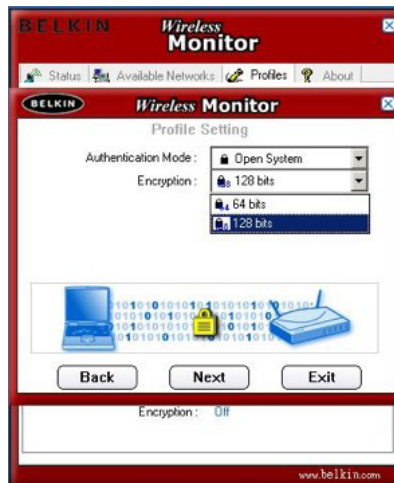
DONE!

128 Bit WEP

- Double click on the **Wireless Monitor Utility**
- Click the **Available Networks** tab
- Highlight the name your available network and click **Connect**



- Set the Authentication Mode to **Open**
- Set the Encryption to **128 Bit** then click **Next**



- Select Input Method as **Hexadecimal** and Type in your Encryption Key

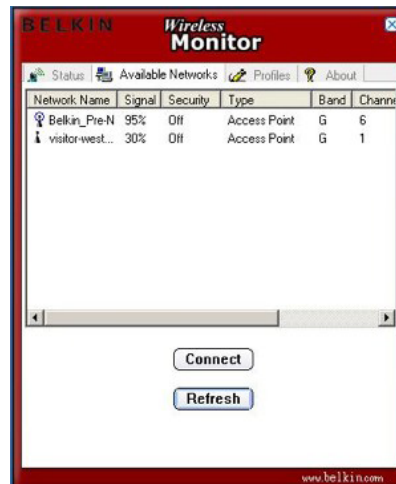


- Click Complete

DONE!

WPA

- Double click on the **Wireless Monitor Utility**
- Click the **Available Networks** tab
- Highlight the name your available network and click **Connect**



- Set the **Authentication Mode** to **Open**
- Set the **Encryption** to **128 Bit** then click **Next**
- Set the **Authentication Mode** to **WPA-PSK** and select the Input Method to **TKIP**, then click **Next**



- Now Enter in your **WPA Key** and Click **Complete**

DONE!



Windows Zero Configuration

This guide applies to any Belkin Wireless Card that is using Windows to manage the Wireless

or

This guide may also apply to some PC's with integrated wireless, such as Centrino Notebooks etc.

For more information on Windows Zero Configuration, please click refer to **Microsoft's knowledge base**.

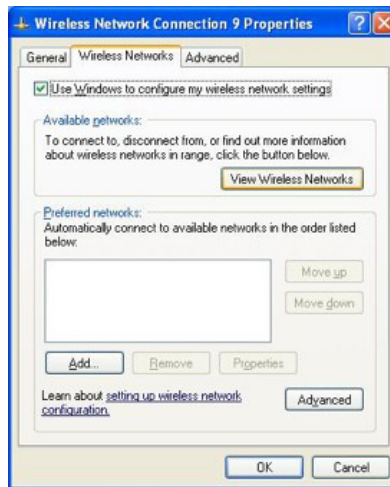
Select Encryption Type:

WEP:
64bit
128bit

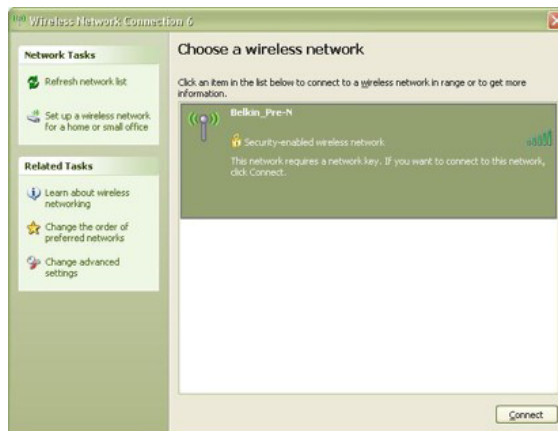
WPA

64 Bit WEP

- Open Windows **Control Panel** – In Control Panel, if at the top left of the screen it says Switch to Classic View – please click to switch to Classic View
- Double click on **Network Connections**
- Using your mouse, right click on the **Wireless Network Connection** and choose **properties**
- Click the **Wireless Networks** tab
- Place a tick in **Use Windows to configure my wireless network settings**



- Click **OK**
- Using your mouse, right click on the **Wireless Network Connection** and choose **properties**
- Click the **Wireless Networks** tab
- Remove anything listed in **Preferred networks**
- Click **View Wireless Networks**



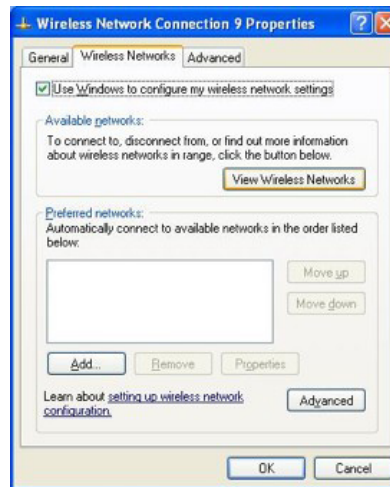
- Highlight your available WEP enabled Wireless network and click **Connect**
- You are now prompted for your WEP network key – type in your key and retype to confirm
- Click **Connect**



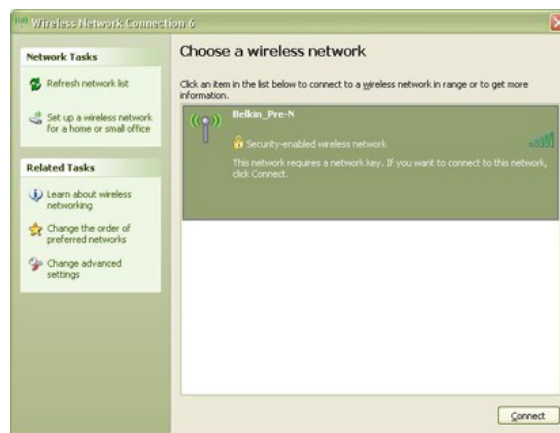
DONE!

128 Bit WEP

- Open Windows **Control Panel** – In Control Panel, if at the top left of the screen it says Switch to Classic View – please click to switch to Classic View
- Double click on **Network Connections**
- Using your mouse, right click on the Wireless Network Connection and choose **properties**
- Click the Wireless Networks tab
- Place a tick in **Use Windows to configure my wireless network settings**



- Click **OK**
- Using your mouse, right click on the **Wireless Network Connection** and choose properties
- Click the Wireless Networks tab
- Remove anything listed in **Preferred networks**
- Click **View Wireless Networks**



- Highlight your available WEP enabled Wireless network and click **Connect**
- You are now prompted for your WEP network key – type in your key and retype to confirm
- Click **Connect**

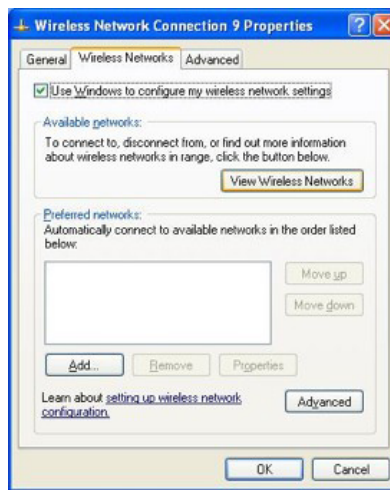


DONE!

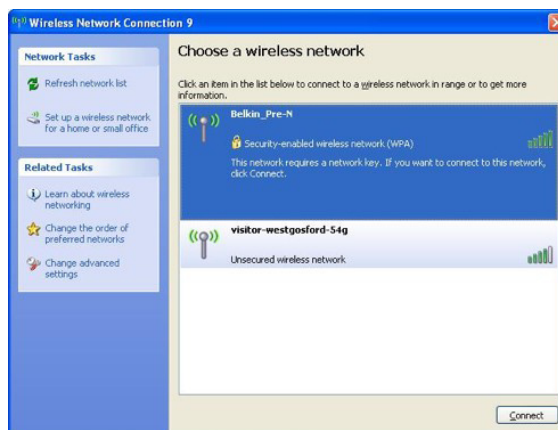
WPA – Windows XP Service Pack 2 only

To download Service Pack 2 for Windows XP, please [Click here](#)

- Open Windows **Control Panel** – In Control Panel, if at the top left of the screen it says Switch to Classic View – please click to switch to Classic View
- Double click on **Network Connections**
- Using your mouse, right click on the Wireless Network Connection and choose **properties**
- Click the Wireless Networks tab
- Place a tick in **Use Windows to configure my wireless network settings**



- Click **OK**
- Using your mouse, right click on the Wireless Network Connection and choose **properties**
- Click the Wireless Networks tab
- Remove anything listed in **Preferred networks**
- Click **View Wireless Networks**



- Highlight your available WPA enabled Wireless network and click **Connect**
- You are now prompted for your WPA network key – type in your key and retype to confirm
- Click **Connect**



DONE!

Free Manuals Download Website

<http://myh66.com>

<http://usermanuals.us>

<http://www.somanuals.com>

<http://www.4manuals.cc>

<http://www.manual-lib.com>

<http://www.404manual.com>

<http://www.luxmanual.com>

<http://aubethermostatmanual.com>

Golf course search by state

<http://golfingnear.com>

Email search by domain

<http://emailbydomain.com>

Auto manuals search

<http://auto.somanuals.com>

TV manuals search

<http://tv.somanuals.com>