

**Agilent E5052BU Option 018
Hard Disk Drive Kit**

User's Guide

First Edition



Manufacturing No. E5052-90202

May 2007

Notices

The information contained in this document is subject to change without notice.

This document contains proprietary information that is protected by copyright. All rights are reserved. No part of this document may be photocopied, reproduced, or translated to another language without the prior written consent of the Agilent Technologies.

© Copyright 2007 Agilent Technologies

Manual Printing History

The manual's printing date and part number indicate its current edition. The printing date changes when a new edition is printed. (Minor corrections and updates that are incorporated at reprint do not cause the date to change.) The manual part number changes when extensive technical changes are incorporated.

May 2007 First Edition

Typeface Conventions

Sample (bold)	Boldface type is used when a term is defined or emphasis.
<i>Sample (Italic)</i>	Italic type is used for emphasis.
Sample key	Indicates a hardkey (key on the front panel or external keyboard) labeled "Sample." "key" may be omitted.
Sample menu/button/box	Indicates a menu/button/box on the screen labeled "Sample" which can be selected/executed by clicking. "menu," "button," or "box" may be omitted.
Sample block/toolbar	Indicates a block (group of hardkeys) or a toolbar (setup toolbar) labeled "Sample."
Sample 1 - Sample 2 - Sample 3	Indicates a sequential operation of Sample 1 , Sample 2 , and Sample 3 (menu, button, or box). "-" may be omitted.

1 **General Information**

This chapter describes the Hard Disk Drive Kit, contents of the kit, and required tools to install the Option 018 into the Agilent E5052B.

Option 018 Hard Disk Drive Kit

The purpose of this kit is to install the option 018 into the Agilent E5052B.

Contents of the Agilent E5052BU Option 018 Hard Disk Drive Kit

The kit includes the parts listed in Table 1-1. If anything is missing, contact the nearest Agilent Technologies office.

Table 1-1

Contents of the Agilent E5052BU Option 018 Hard Disk Drive Kit

Description	Qty.
Upgrade Manual (This manual)	1
HDD Assembly	1

2 **Option Installation**

This chapter describes the procedure to install the option 018 into the Agilent E5052B.

Introduction

This chapter describes the procedure to install Option 018 into the E5052B. The procedure consists of the following items.

- Installation Requirement
 - Saving System calibration Data from Removable Hard Disk to USB Pen Drive
 - Removing Removable Hard Disk
 - Mounting Removable Hard Disk
 - Initial Registration of E5052B
 - Calibration of the Touch Screen
 - Recalling System Calibration Data from USB Pen drive to Removable Hard Disk
-

Procedure

Installation Requirement

- 5188-4426 Key for Hard Disk Carrier
- USB Pen Drive (Over 512MB)

Saving System calibration Data from Removable Hard Disk to USB Pen Drive

The following is a description of the procedures to save the system calibration data stored in the removable hard disk to a USB Pen drive.

- Step 1.** Exit the measurement window.
System > Service Menu > Administrator Menu > Exit E5052B > OK
- Step 2.** Insert a USB Pen drive into the USB port in front panel.
- Step 3.** Open **D:\Recovery** drive.
- Step 4.** Click **.D:\syscal** from the explorer.
- Step 5.** Select **Edit - Copy** from menu bar of the explorer.
- Step 6.** Click the USB Pen drive of the explorer.
- Step 7.** Select **Edit - Paste** from menu bar of the explorer.
- Step 8.** Click **.D:\limit** from the explorer.
- Step 9.** Select **Edit - Copy** from menu bar of the explorer.
- Step 10.** Click the USB Pen drive of the explorer.
- Step 11.** Select **Edit - Paste** from menu bar of the explorer.
- Step 12.** Turn off the E5052B, and then remove the cord from the outlet before removing the Removable Hard Disk.

Removing Removable Hard Disk

Follow the steps below to remove a removable hard disk.

CAUTION

Before removing a hard disk, you *must* turn off the unit's power and then disconnect the power cord from the outlet.

- Step 1.** Turn off the power.
- Step 2.** Insert the key in the lock and turn anti-clockwise.
- Step 3.** Open the screw in clockwise direction.
- Step 4.** Press the button under direction.
- Step 5.** Remove the hard disk.

Mounting Removable Hard Disk

Follow the steps below to mount a removable hard disk.

- Step 1.** Insert the hard disk into the slot.
- Step 2.** Turn the screw in anti-clockwise direction until it is locked.
- Step 3.** Turn the key to the right until it is locked.
- Step 4.** Remove the key.
- Step 5.** Turn on the E5052B.

Initial Registration of E5052B

When you start up the E5052B at the first time, you need to perform the initial registration of the Windows XP operating system of the E5052B.

NOTE You cannot use the front panel keys during the initial registration of the E5052B therefore connect the mouse and the keyboard before turning on the power.

NOTE If you perform the following procedure incorrectly, a message asking you whether to return to the previous registration screen and perform the registration appears. In this case, follow the instruction to return to the previous registration screen.

Step 1. Turns on the E5052B.

Step 2. The Windows XP Professional Setup wizard appears. Click the **Next >** button (Figure 2-1).

Figure 2-1 Windows XP Professional Setup wizard

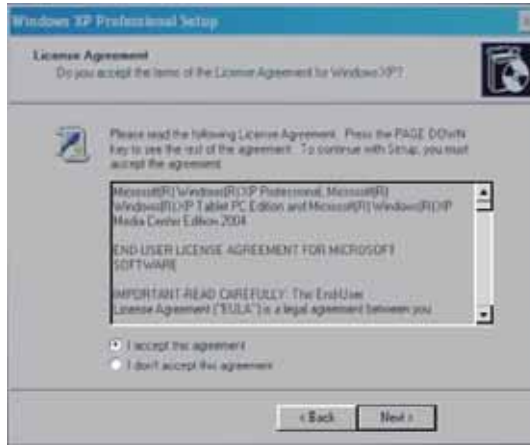


e5071cse1073

Option Installation Procedure

Step 3. In the Windows XP Professional Setup dialog box, select the **I accept this agreement** box and click the **Next >** button (Figure 2-2).

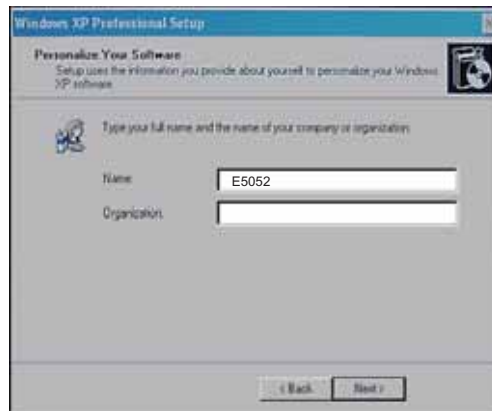
Figure 2-2 Windows XP Professional Setup dialog box (1/2)



e5071cse1074

Step 4. In the next dialog box, input **E5052** in the **Name** box. Then, click the **Next>** button (Figure 2-3).

Figure 2-3 Windows XP Professional Setup dialog box (2/2)



e5052bse1033

Step 5. After a while, the E5052B restart automatically. Then, the measurement display appears.

Calibration of the Touch Screen

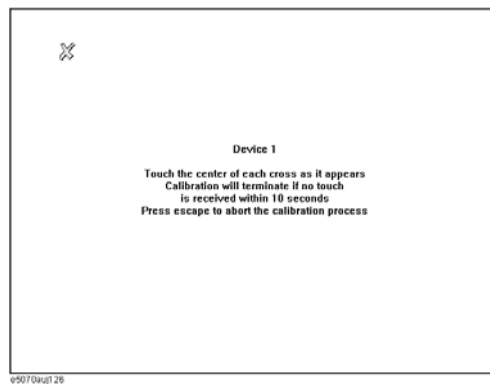
When you have replaced the HDD on an E5052B, you have to calibrate the touch screen. Follow the procedure described below to calibrate the touch screen.

- Step 1.** Press **System**.
- Step 2.** Press **Service Menu**.
- Step 3.** Press **Test Menu**.
- Step 4.** Press **Adjust Touch Screen**.

The touch screen calibration screen (Figure 2-4) appears.

Figure 2-4

Touch Panel Calibration Screen



- Step 5.** Touch the x mark on the upper left with your finger. The mark x appears also on the lower left, upper right, and lower right. Touch the x marks in that order with your finger.

Touching the four locations described above with your finger automatically concludes the touch screen calibration.

NOTE

With no operation on the touch screen calibration screen for a preset time, it automatically closes and the previous measurement screen reappears.

Recalling System Calibration Data from USB Pen drive to Removable Hard Disk

The following is a description of the procedures to copy the system calibration data stored in the USB Pen drive to the removable hard disk.

Step 1. Exit the measurement window.

System > Service Menu > Administrator Menu > Exit E5052B > OK

Step 2. Insert a USB pen drive in to the USB port in front panel.

Step 3. Open **D:\Recovery** drive.

Step 4. Click **syscal** folder in the USB Pen drive from the explorer.

Step 5. Select **Edit - Copy** from menu bar of the explorer.

Step 6. Click the **D:** of the explorer.

Step 7. Select **Edit - Paste** from menu bar of the explorer.

Step 8. Click **limit** folder in the USB Pen drive from the explorer.

Step 9. Select **Edit - Copy** from menu bar of the explorer.

Step 10. Click the **D:** of the explorer.

Step 11. Select **Edit - Paste** from menu bar of the explorer.

Step 12. Restart E5052B

REGIONAL SALES AND SUPPORT OFFICES

For more information about Agilent Technologies test and measurement products, applications, services, and for a current sales office listing, visit our web site: <http://www.agilent.com/find/tmdir>. You can also contact one of the following centers and ask for a test and measurement sales representative. 21/01/2004

United States:

Test and Measurement Call Center
(tel) 1 800 452-4844
(fax) 1 888 900-8921

Australia/New Zealand:

(tel) (61 3) 9210-5555 (Australia)
(fax) (61 3) 9210-5899
(tel) (64 4) 939-0636 (New Zealand)
(fax) (64 4) 972-5364

Canada:

Test and Measurement Call Center
(tel) 1 877 894-4414
(fax) 1 888 900-8921

Asia Pacific:

(tel) (65) 6375-8100
(fax) (65) 6836-0252
Email: tm_asia@agilent.com

China:

(tel) 800 810-0189
(fax) 800 820-2816

Europe:

(tel) (31 20) 547-2323
(fax) (31 20) 547-2390

Japan:

Call Center
(tel) 0120 421-345
(tel) (81) 426 56-7832
(fax) (81) 426 56-7840

Korea:

(tel) (82 2) 2004-5004
(fax) (82 2) 2004-5115

Latin America:

(tel) (305) 269-7500
(fax) (305) 269-7599

Taiwan:

(tel) 0800 047 866
(fax) 0800 286 331

Free Manuals Download Website

<http://myh66.com>

<http://usermanuals.us>

<http://www.somanuals.com>

<http://www.4manuals.cc>

<http://www.manual-lib.com>

<http://www.404manual.com>

<http://www.luxmanual.com>

<http://aubethermostatmanual.com>

Golf course search by state

<http://golfingnear.com>

Email search by domain

<http://emailbydomain.com>

Auto manuals search

<http://auto.somanuals.com>

TV manuals search

<http://tv.somanuals.com>