



Bluetooth® 3.0 Mini Keyboard 2000



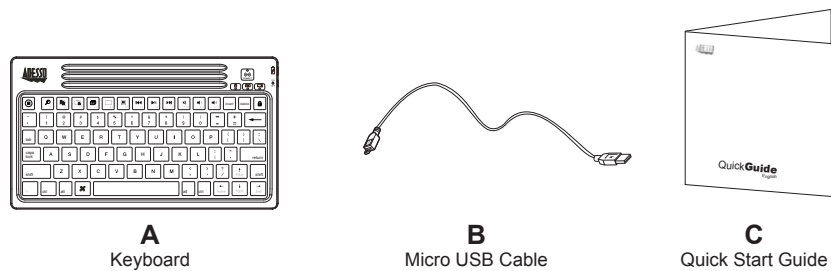
Model: WKB-2000BA

QuickGuide English

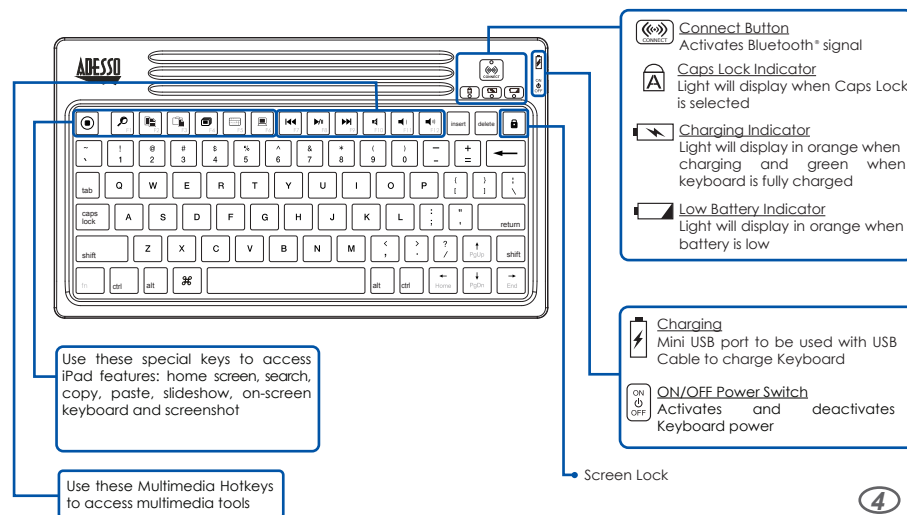
www.adesso.com

①

CONTENTS



DESCRIPTION



④

LIMITED WARRANTY

Adesso provides a one year limited warranty for all of its products against defects in material and workmanship.

During this period, Adesso will repair or replace any product which proves to be defective. However, Adesso will not warranty any product which has been subject to improper freight handling, shipping abuse, neglect, improper installation or unauthorized repair. The warranty will not cover products installed with components not approved by Adesso and products where the sealed assembly trace has been broken.

If you discover a defect, Adesso will, at its option, repair or replace the product at no charge to you provided you return it during the warranty period with freight charges pre-paid to Adesso. Before returning any product, you must obtain a Return Merchandise Authorization number (RMA). This RMA # must be clearly marked on the outside of the package you are returning for warranty service. Be certain to also include your name, shipping address (no PO Boxes), telephone number, and a copy of the invoice showing proof of purchase in the package.

SUPPORT

We have listed most of our FAQ's (Frequently Asked Questions) at: <http://www.adesso.com/faqs.asp>. Please visit our FAQ Service & Support pages before you contact our E-mail or Telephone Support.

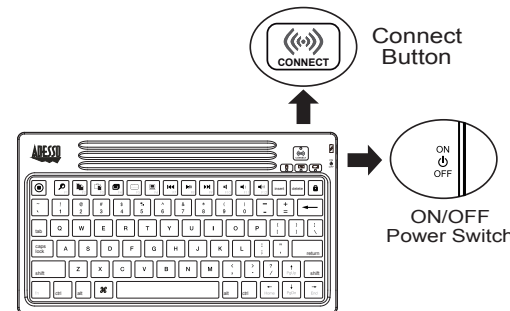
Email Support: If our FAQ's do not help you resolve your issues, please email support@adesso.com

Telephone Support:
Toll Free: (800) 795-6788
9:00AM to 5:00PM PST Monday - Friday

②

Bluetooth CONNECTION SETUP

1. Turn iPad power to **ON**, then place keyboard power switch to **ON**.
2. Press keyboard **CONNECT** button to activate Bluetooth® signal.



3. Select iPad **Settings**, then **General** and **Bluetooth** option, slide the iPad Bluetooth toggle to **ON**. After a few seconds **Adesso Bluetooth Keyboard** will appear in list of Bluetooth devices, select keyboard.



⑤

INTRODUCTION

The Adesso Bluetooth® 3.0 Mini Keyboard 2000 is the perfect companion for your iPad™ and other Bluetooth® enabled devices. This Bluetooth® 3.0 keyboard is designed using the latest wireless technology and a unique silicon material that protects your keyboard from unexpected spills and allows washing to eliminate germs. The silicon material also offers a faster and almost silent tactile response, so you can be productive without the extra noise. The keyboard includes a standard layout with iPad™ and Multimedia Hot Keys to access your iPad's shortcuts with one-touch. Along with all these great features, this keyboard is also compact and portable, so you can take it everywhere.

SPECIFICATIONS

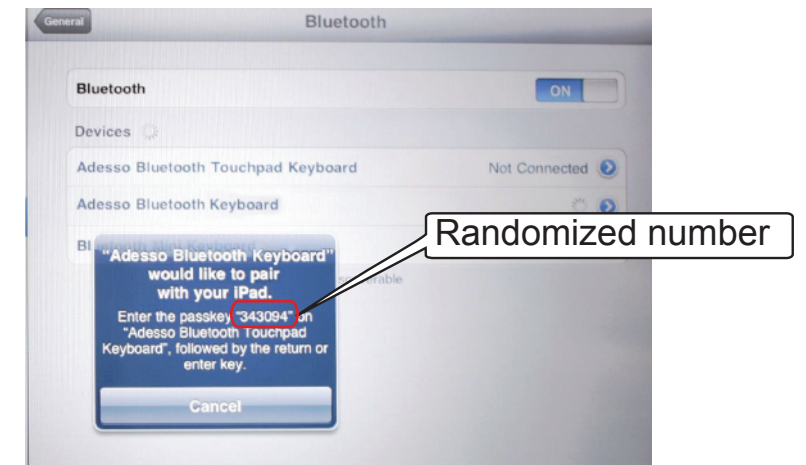
- Keyboard Layout: 76-Key Mini Layout
- Key Type: Silicon
- Wireless Technology: Bluetooth® 3.0 wireless technology with backward compatibility
- Working Range: 30 feet (10m)
- Indicators: Caps Lock, Charging & Low Battery
- iPad Hot Keys: 8
- Multimedia Hot Keys: 6
- Keyboard Dimensions: 9.25 x 5.25 x 0.30" (235 x 133 x 7mm)
- Battery Life: Up to 100 hours (continuous use) / Up to 30 days (standby mode)

REQUIREMENTS

- Bluetooth® 3.0, 2.1, 2.0 & 1.1 wireless technology

③

4. A screen will show asking to pair **Adesso Bluetooth Keyboard**, using Adesso Bluetooth Keyboard enter the **randomized passkey** provided on screen and press return. Upon completion, your iPad screen will show the keyboard connected and will be ready for use.

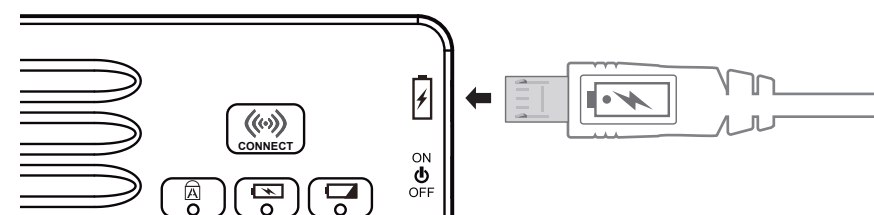


⑥

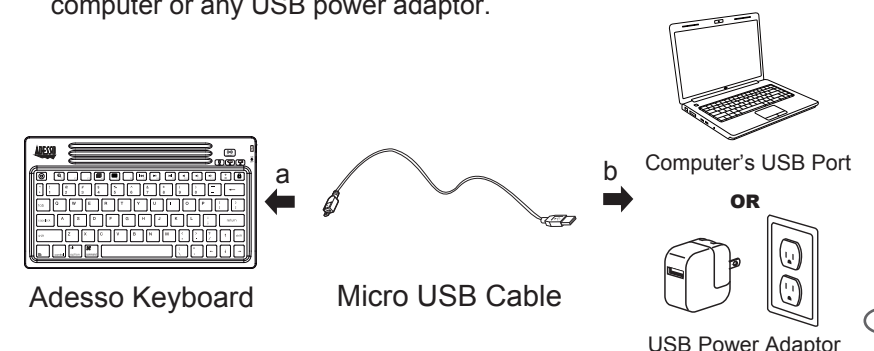
CHARGING BATTERY

Charge keyboard battery using computer USB port or any USB power adaptor (i.e. iPad charger):

- a. Insert the Micro USB Charging Cable Connector into the keyboard micro USB charging port, located on right side of keyboard.
Note: Insert Micro USB Cable with battery charging symbol facing up, as shown below.



- b. Insert the USB end of the Micro USB Cable into the USB port of your computer or any USB power adaptor.



⑦

iPad Hotkeys		
Key	Action	Description
	Home Screen	Returns iPad screen to home screen
	Search	Launches iPad search feature
	Copy	Copy text or image
	Paste	Paste text or image
	Slideshow	Launches iPad slideshow feature
	On-Screen Keyboard	Shows or hides iPad on-screen keyboard
	Screenshot	Takes snapshot of screen
	Screen Lock	Deactivates iPad (standby mode) and locks screen
Multimedia Hotkeys		
Key	Action	Description
	Previous Track	Takes you to previous track in multimedia software
	Play/Pause	Plays or pauses track in multimedia software
	Next Track	Takes you to next track in multimedia software
	Mute	Mutes computer main volume
	Volume Down	Decreases computer main volume
	Volume Up	Increases computer main volume

⑧

NOTE:

- The Bluetooth LED Indicator on the keyboard will flash when the Connect Button is being pressed.
- The keyboard goes to sleep mode after 5 minutes of inactivity, it is suggested to turn the keyboard Power Switch to OFF when leaving your desk for more than an hour to save battery life.

TROUBLESHOOTING

If you cannot get your keyboard to work after installation, please try the following:

1. Make sure the Power Switch at the side of the keyboard is set to ON.
2. Make sure you have setup Bluetooth connection correctly on your iPad, as instructed on Bluetooth Connection Setup (pg. 5,6).
3. Make sure that the keyboard is within range of your iPad. Maximum keyboard Bluetooth range is about 30 feet.
4. Make sure that both your iPad battery and the keyboard battery are fully charged.

⑨

Free Manuals Download Website

<http://myh66.com>

<http://usermanuals.us>

<http://www.somanuals.com>

<http://www.4manuals.cc>

<http://www.manual-lib.com>

<http://www.404manual.com>

<http://www.luxmanual.com>

<http://aubethermostatmanual.com>

Golf course search by state

<http://golfingnear.com>

Email search by domain

<http://emailbydomain.com>

Auto manuals search

<http://auto.somanuals.com>

TV manuals search

<http://tv.somanuals.com>